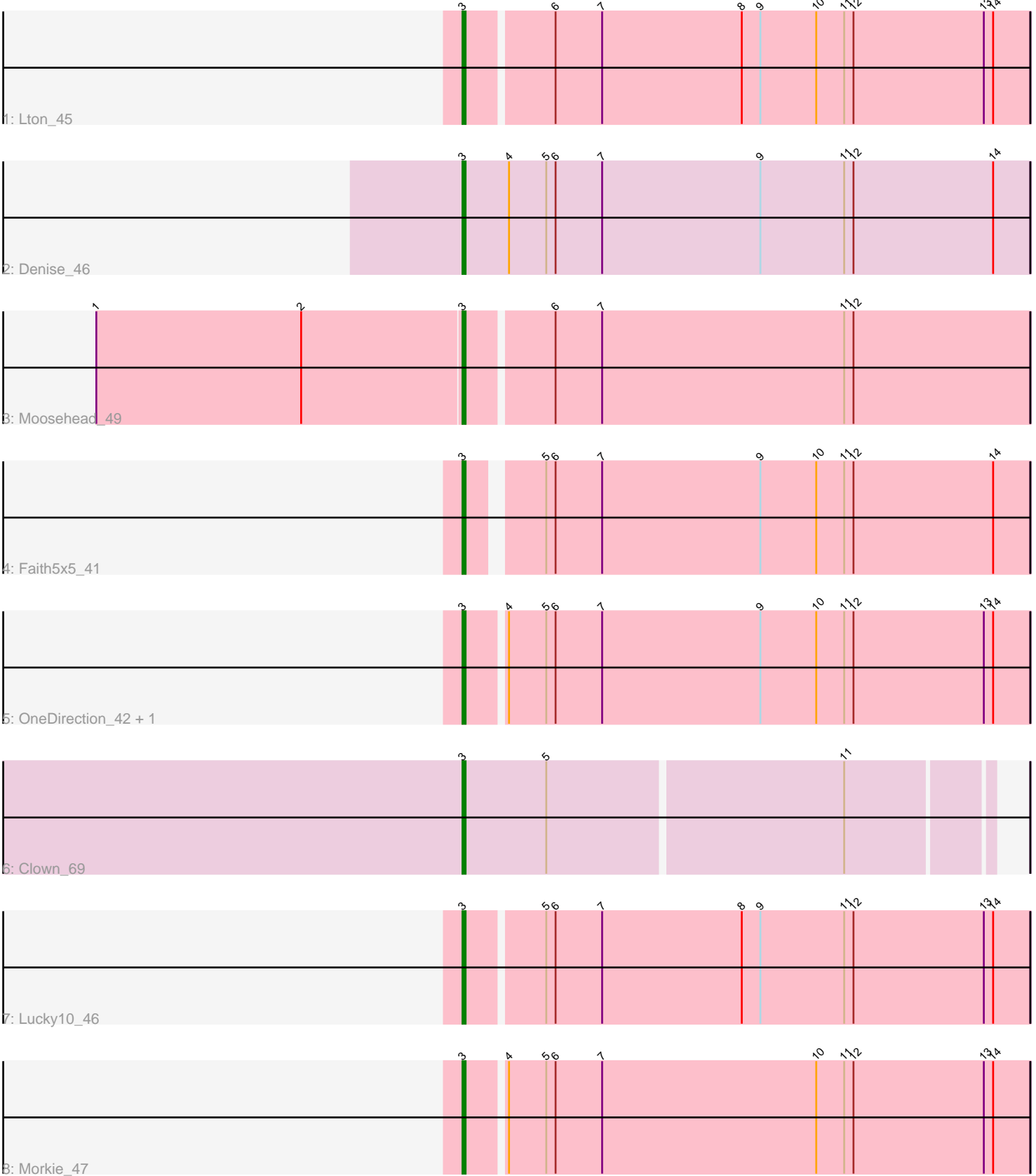


Pham 101629



Note: Tracks are now grouped by subcluster and scaled. Switching in subcluster is indicated by changes in track color. Track scale is now set by default to display the region 30 bp upstream of start 1 to 30 bp downstream of the last possible start. If this default region is judged to be packed too tightly with annotated starts, the track will be further scaled to only show that region of the ORF with annotated starts. This action will be indicated by adding "Zoomed" to the title. For starts, yellow indicates the location of called starts comprised solely of Glimmer/GeneMark auto-annotations, green indicates the location of called starts with at least 1 manual gene annotation.

Pham 101629 Report

This analysis was run 04/28/24 on database version 559.

Pham number 101629 has 9 members, 1 are drafts.

Phages represented in each track:

- Track 1 : Lton_45
- Track 2 : Denise_46
- Track 3 : Moosehead_49
- Track 4 : Faith5x5_41
- Track 5 : OneDirection_42, Pepperoni_42
- Track 6 : Clown_69
- Track 7 : Lucky10_46
- Track 8 : Morkie_47

Summary of Final Annotations (See graph section above for start numbers):

The start number called the most often in the published annotations is 3, it was called in 8 of the 8 non-draft genes in the pham.

Genes that call this "Most Annotated" start:

- Clown_69, Denise_46, Faith5x5_41, Lton_45, Lucky10_46, Moosehead_49, Morkie_47, OneDirection_42, Pepperoni_42,

Genes that have the "Most Annotated" start but do not call it:

-

Genes that do not have the "Most Annotated" start:

-

Summary by start number:

Start 3:

- Found in 9 of 9 (100.0%) of genes in pham
- Manual Annotations of this start: 8 of 8
- Called 100.0% of time when present
- Phage (with cluster) where this start called: Clown_69 (DC2), Denise_46 (CZ5), Faith5x5_41 (CZ6), Lton_45 (CZ), Lucky10_46 (DH), Moosehead_49 (CZ6), Morkie_47 (DH), OneDirection_42 (CZ6), Pepperoni_42 (CZ),

Summary by clusters:

There are 5 clusters represented in this pham: DC2, CZ, CZ6, DH, CZ5,

Info for manual annotations of cluster CZ:

- Start number 3 was manually annotated 1 time for cluster CZ.

Info for manual annotations of cluster CZ5:

- Start number 3 was manually annotated 1 time for cluster CZ5.

Info for manual annotations of cluster CZ6:

- Start number 3 was manually annotated 3 times for cluster CZ6.

Info for manual annotations of cluster DC2:

- Start number 3 was manually annotated 1 time for cluster DC2.

Info for manual annotations of cluster DH:

- Start number 3 was manually annotated 2 times for cluster DH.

Gene Information:

Gene: Clown_69 Start: 48162, Stop: 48326, Start Num: 3

Candidate Starts for Clown_69:

(Start: 3 @48162 has 8 MA's), (5, 48189), (11, 48282),

Gene: Denise_46 Start: 32643, Stop: 32825, Start Num: 3

Candidate Starts for Denise_46:

(Start: 3 @32643 has 8 MA's), (4, 32658), (5, 32670), (6, 32673), (7, 32688), (9, 32739), (11, 32766), (12, 32769), (14, 32814),

Gene: Faith5x5_41 Start: 30105, Stop: 30281, Start Num: 3

Candidate Starts for Faith5x5_41:

(Start: 3 @30105 has 8 MA's), (5, 30126), (6, 30129), (7, 30144), (9, 30195), (10, 30213), (11, 30222), (12, 30225), (14, 30270),

Gene: Lton_45 Start: 30148, Stop: 30327, Start Num: 3

Candidate Starts for Lton_45:

(Start: 3 @30148 has 8 MA's), (6, 30175), (7, 30190), (8, 30235), (9, 30241), (10, 30259), (11, 30268), (12, 30271), (13, 30313), (14, 30316),

Gene: Lucky10_46 Start: 32866, Stop: 33045, Start Num: 3

Candidate Starts for Lucky10_46:

(Start: 3 @32866 has 8 MA's), (5, 32890), (6, 32893), (7, 32908), (8, 32953), (9, 32959), (11, 32986), (12, 32989), (13, 33031), (14, 33034),

Gene: Moosehead_49 Start: 31254, Stop: 31433, Start Num: 3

Candidate Starts for Moosehead_49:

(1, 31137), (2, 31203), (Start: 3 @31254 has 8 MA's), (6, 31281), (7, 31296), (11, 31374), (12, 31377),

Gene: Morkie_47 Start: 31982, Stop: 32161, Start Num: 3

Candidate Starts for Morkie_47:

(Start: 3 @31982 has 8 MA's), (4, 31994), (5, 32006), (6, 32009), (7, 32024), (10, 32093), (11, 32102), (12, 32105), (13, 32147), (14, 32150),

Gene: OneDirection_42 Start: 29596, Stop: 29775, Start Num: 3

Candidate Starts for OneDirection_42:

(Start: 3 @29596 has 8 MA's), (4, 29608), (5, 29620), (6, 29623), (7, 29638), (9, 29689), (10, 29707), (11, 29716), (12, 29719), (13, 29761), (14, 29764),

Gene: Pepperoni_42 Start: 31161, Stop: 31340, Start Num: 3

Candidate Starts for Pepperoni_42:

(Start: 3 @31161 has 8 MA's), (4, 31173), (5, 31185), (6, 31188), (7, 31203), (9, 31254), (10, 31272), (11, 31281), (12, 31284), (13, 31326), (14, 31329),