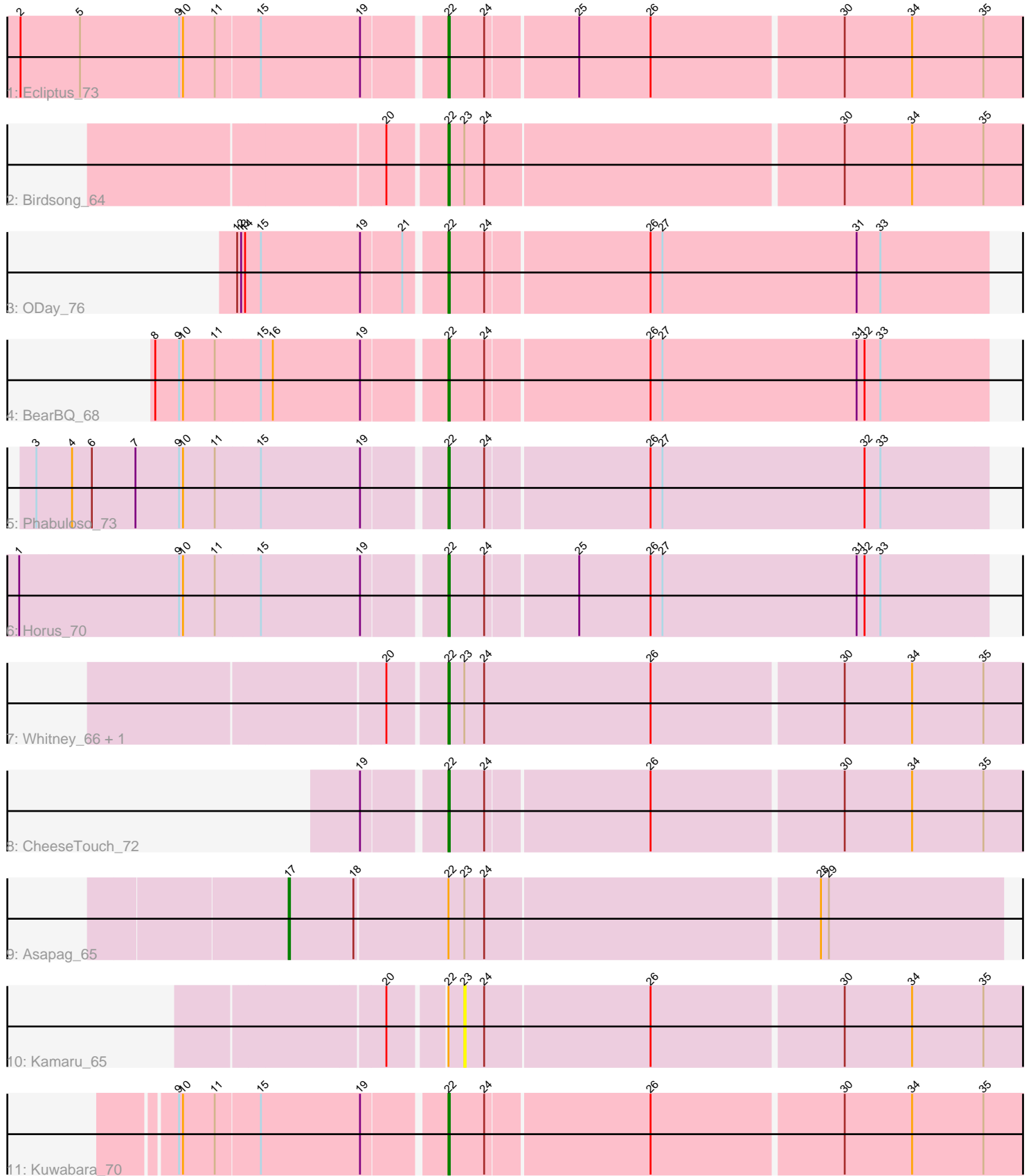


# Pham 103896



Note: Tracks are now grouped by subcluster and scaled. Switching in subcluster is indicated by changes in track color. Track scale is now set by default to display the region 30 bp upstream of start 1 to 30 bp downstream of the last possible start. If this default region is judged to be packed too tightly with annotated starts, the track will be further scaled to only show that region of the ORF with annotated starts. This action will be indicated by adding "Zoomed" to the title. For starts, yellow indicates the location of called starts comprised solely of Glimmer/GeneMark auto-annotations, green indicates the location of called starts with at least 1 manual gene annotation.

## Pham 103896 Report

This analysis was run 04/05/24 on database version 557.

Pham number 103896 has 12 members, 1 are drafts.

Phages represented in each track:

- Track 1 : Ecliptus\_73
- Track 2 : Birdsong\_64
- Track 3 : ODay\_76
- Track 4 : BearBQ\_68
- Track 5 : Phabuloso\_73
- Track 6 : Horus\_70
- Track 7 : Whitney\_66, Budski\_71
- Track 8 : CheeseTouch\_72
- Track 9 : Asapag\_65
- Track 10 : Kamaru\_65
- Track 11 : Kuwabara\_70

### ***Summary of Final Annotations (See graph section above for start numbers):***

The start number called the most often in the published annotations is 22, it was called in 10 of the 11 non-draft genes in the pham.

Genes that call this "Most Annotated" start:

- BearBQ\_68, Birdsong\_64, Budski\_71, CheeseTouch\_72, Ecliptus\_73, Horus\_70, Kuwabara\_70, ODay\_76, Phabuloso\_73, Whitney\_66,

Genes that have the "Most Annotated" start but do not call it:

- Asapag\_65, Kamaru\_65,

Genes that do not have the "Most Annotated" start:

•

### **Summary by start number:**

Start 17:

- Found in 1 of 12 ( 8.3% ) of genes in pham
- Manual Annotations of this start: 1 of 11
- Called 100.0% of time when present
- Phage (with cluster) where this start called: Asapag\_65 (DN1),

Start 22:

- Found in 12 of 12 ( 100.0% ) of genes in pham
- Manual Annotations of this start: 10 of 11
- Called 83.3% of time when present
- Phage (with cluster) where this start called: BearBQ\_68 (DN), Birdsong\_64 (DN), Budski\_71 (DN), CheeseTouch\_72 (DN1), Ecliptus\_73 (DN), Horus\_70 (DN1), Kuwabara\_70 (DN4), ODay\_76 (DN), Phabuloso\_73 (DN1), Whitney\_66 (DN1),

Start 23:

- Found in 5 of 12 ( 41.7% ) of genes in pham
- No Manual Annotations of this start.
- Called 20.0% of time when present
- Phage (with cluster) where this start called: Kamaru\_65 (DN1),

### **Summary by clusters:**

There are 3 clusters represented in this pham: DN, DN4, DN1,

Info for manual annotations of cluster DN:

- Start number 22 was manually annotated 5 times for cluster DN.

Info for manual annotations of cluster DN1:

- Start number 17 was manually annotated 1 time for cluster DN1.
- Start number 22 was manually annotated 4 times for cluster DN1.

Info for manual annotations of cluster DN4:

- Start number 22 was manually annotated 1 time for cluster DN4.

### **Gene Information:**

Gene: Asapag\_65 Start: 39896, Stop: 40423, Start Num: 17

Candidate Starts for Asapag\_65:

(Start: 17 @39896 has 1 MA's), (18, 39944), (Start: 22 @40013 has 10 MA's), (23, 40025), (24, 40040), (28, 40286), (29, 40292),

Gene: BearBQ\_68 Start: 43140, Stop: 43541, Start Num: 22

Candidate Starts for BearBQ\_68:

(8, 42933), (9, 42951), (10, 42954), (11, 42978), (15, 43011), (16, 43020), (19, 43086), (Start: 22 @43140 has 10 MA's), (24, 43167), (26, 43287), (27, 43296), (31, 43443), (32, 43449), (33, 43461),

Gene: Birdsong\_64 Start: 39677, Stop: 40105, Start Num: 22

Candidate Starts for Birdsong\_64:

(20, 39638), (Start: 22 @39677 has 10 MA's), (23, 39689), (24, 39704), (30, 39968), (34, 40019), (35, 40073),

Gene: Budski\_71 Start: 41798, Stop: 42229, Start Num: 22

Candidate Starts for Budski\_71:

(20, 41759), (Start: 22 @41798 has 10 MA's), (23, 41810), (24, 41825), (26, 41951), (30, 42092), (34, 42143), (35, 42197),

Gene: CheeseTouch\_72 Start: 38570, Stop: 38995, Start Num: 22

Candidate Starts for CheeseTouch\_72:

(19, 38516), (Start: 22 @38570 has 10 MA's), (24, 38597), (26, 38717), (30, 38858), (34, 38909), (35, 38963),

Gene: Ecliptus\_73 Start: 43891, Stop: 44316, Start Num: 22

Candidate Starts for Ecliptus\_73:

(2, 43582), (5, 43627), (9, 43702), (10, 43705), (11, 43729), (15, 43762), (19, 43837), (Start: 22 @43891 has 10 MA's), (24, 43918), (25, 43984), (26, 44038), (30, 44179), (34, 44230), (35, 44284),

Gene: Horus\_70 Start: 43096, Stop: 43497, Start Num: 22

Candidate Starts for Horus\_70:

(1, 42787), (9, 42907), (10, 42910), (11, 42934), (15, 42967), (19, 43042), (Start: 22 @43096 has 10 MA's), (24, 43123), (25, 43189), (26, 43243), (27, 43252), (31, 43399), (32, 43405), (33, 43417),

Gene: Kamaru\_65 Start: 39874, Stop: 40290, Start Num: 23

Candidate Starts for Kamaru\_65:

(20, 39823), (Start: 22 @39862 has 10 MA's), (23, 39874), (24, 39889), (26, 40012), (30, 40153), (34, 40204), (35, 40258),

Gene: Kuwabara\_70 Start: 43219, Stop: 43644, Start Num: 22

Candidate Starts for Kuwabara\_70:

(9, 43030), (10, 43033), (11, 43057), (15, 43090), (19, 43165), (Start: 22 @43219 has 10 MA's), (24, 43246), (26, 43366), (30, 43507), (34, 43558), (35, 43612),

Gene: ODay\_76 Start: 44332, Stop: 44733, Start Num: 22

Candidate Starts for ODay\_76:

(12, 44185), (13, 44188), (14, 44191), (15, 44203), (19, 44278), (21, 44308), (Start: 22 @44332 has 10 MA's), (24, 44359), (26, 44479), (27, 44488), (31, 44635), (33, 44653),

Gene: Phabuloso\_73 Start: 42594, Stop: 42995, Start Num: 22

Candidate Starts for Phabuloso\_73:

(3, 42297), (4, 42324), (6, 42339), (7, 42372), (9, 42405), (10, 42408), (11, 42432), (15, 42465), (19, 42540), (Start: 22 @42594 has 10 MA's), (24, 42621), (26, 42741), (27, 42750), (32, 42903), (33, 42915),

Gene: Whitney\_66 Start: 41711, Stop: 42142, Start Num: 22

Candidate Starts for Whitney\_66:

(20, 41672), (Start: 22 @41711 has 10 MA's), (23, 41723), (24, 41738), (26, 41864), (30, 42005), (34, 42056), (35, 42110),