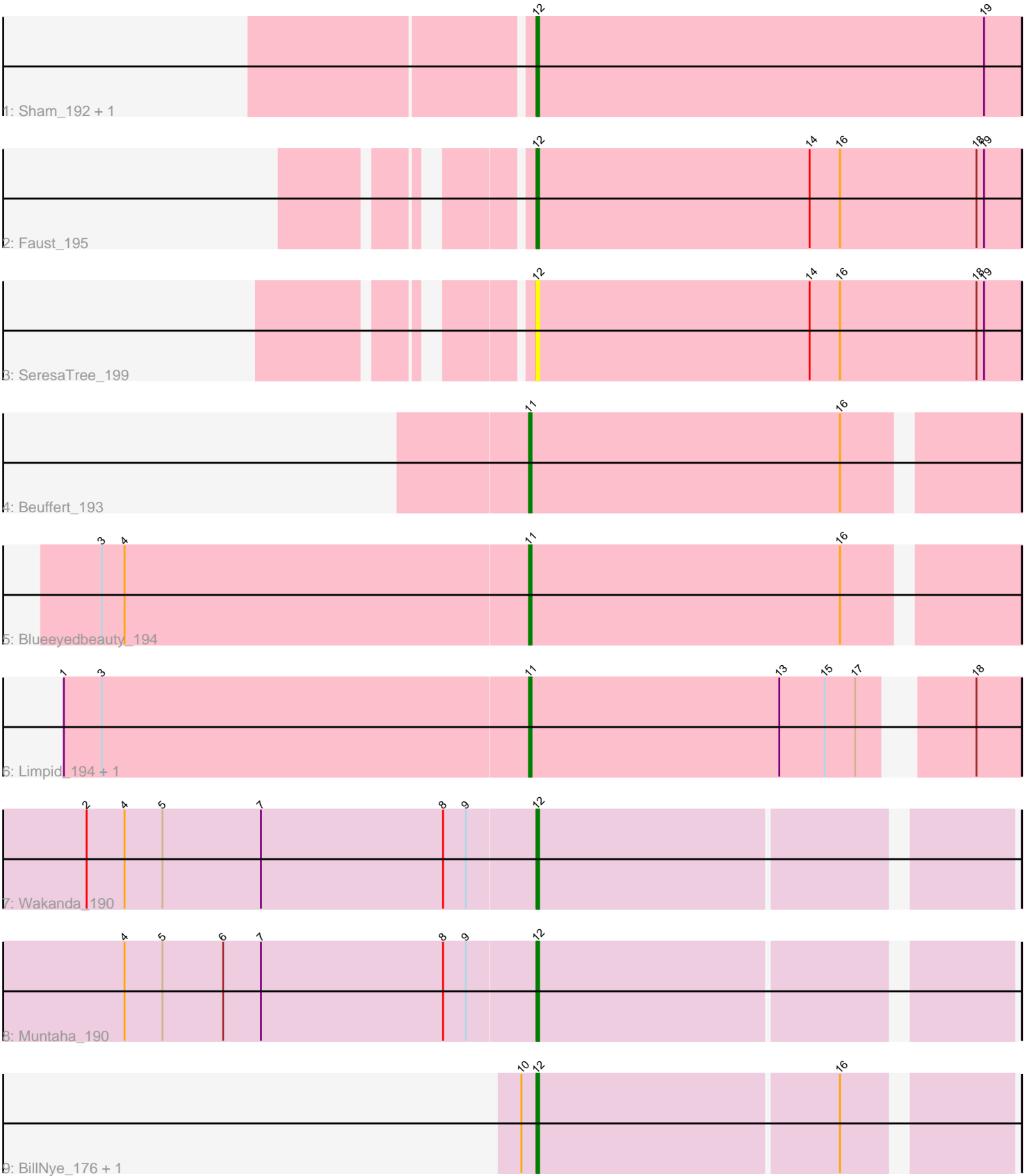


Pham 106769



Note: Tracks are now grouped by subcluster and scaled. Switching in subcluster is indicated by changes in track color. Track scale is now set by default to display the region 30 bp upstream of start 1 to 30 bp downstream of the last possible start. If this default region is judged to be packed too tightly with annotated starts, the track will be further scaled to only show that region of the ORF with annotated starts. This action will be indicated by adding "Zoomed" to the title. For starts, yellow indicates the location of called starts comprised solely of Glimmer/GeneMark auto-annotations, green indicates the location of called starts with at least 1 manual gene annotation.

Pham 106769 Report

This analysis was run 04/28/24 on database version 559.

Pham number 106769 has 12 members, 1 are drafts.

Phages represented in each track:

- Track 1 : Sham_192, TunaTartare_200
- Track 2 : Faust_195
- Track 3 : SeresaTree_199
- Track 4 : Beuffert_193
- Track 5 : Blueeyedbeauty_194
- Track 6 : Limpid_194, Annadreamy_187
- Track 7 : Wakanda_190
- Track 8 : Muntaha_190
- Track 9 : BillNye_176, Circinus_177

Summary of Final Annotations (See graph section above for start numbers):

The start number called the most often in the published annotations is 12, it was called in 7 of the 11 non-draft genes in the pham.

Genes that call this "Most Annotated" start:

- BillNye_176, Circinus_177, Faust_195, Muntaha_190, SeresaTree_199, Sham_192, TunaTartare_200, Wakanda_190,

Genes that have the "Most Annotated" start but do not call it:

-

Genes that do not have the "Most Annotated" start:

- Annadreamy_187, Beuffert_193, Blueeyedbeauty_194, Limpid_194,

Summary by start number:

Start 11:

- Found in 4 of 12 (33.3%) of genes in pham
- Manual Annotations of this start: 4 of 11
- Called 100.0% of time when present
- Phage (with cluster) where this start called: Annadreamy_187 (BK1), Beuffert_193 (BK1), Blueeyedbeauty_194 (BK1), Limpid_194 (BK1),

Start 12:

- Found in 8 of 12 (66.7%) of genes in pham
- Manual Annotations of this start: 7 of 11
- Called 100.0% of time when present
- Phage (with cluster) where this start called: BillNye_176 (BK2), Circinus_177 (BK2), Faust_195 (BK1), Muntaha_190 (BK2), SeresaTree_199 (BK1), Sham_192 (BK1), TunaTartare_200 (BK1), Wakanda_190 (BK2),

Summary by clusters:

There are 2 clusters represented in this pham: BK1, BK2,

Info for manual annotations of cluster BK1:

- Start number 11 was manually annotated 4 times for cluster BK1.
- Start number 12 was manually annotated 3 times for cluster BK1.

Info for manual annotations of cluster BK2:

- Start number 12 was manually annotated 4 times for cluster BK2.

Gene Information:

Gene: Annadreamy_187 Start: 95868, Stop: 96047, Start Num: 11

Candidate Starts for Annadreamy_187:

(1, 95685), (3, 95700), (Start: 11 @95868 has 4 MA's), (13, 95967), (15, 95985), (17, 95997), (18, 96030),

Gene: Beuffert_193 Start: 100337, Stop: 100522, Start Num: 11

Candidate Starts for Beuffert_193:

(Start: 11 @100337 has 4 MA's), (16, 100460),

Gene: BillNye_176 Start: 97567, Stop: 97743, Start Num: 12

Candidate Starts for BillNye_176:

(10, 97561), (Start: 12 @97567 has 7 MA's), (16, 97684),

Gene: Blueeyedbeauty_194 Start: 99314, Stop: 99499, Start Num: 11

Candidate Starts for Blueeyedbeauty_194:

(3, 99146), (4, 99155), (Start: 11 @99314 has 4 MA's), (16, 99437),

Gene: Circinus_177 Start: 97532, Stop: 97708, Start Num: 12

Candidate Starts for Circinus_177:

(10, 97526), (Start: 12 @97532 has 7 MA's), (16, 97649),

Gene: Faust_195 Start: 101525, Stop: 101716, Start Num: 12

Candidate Starts for Faust_195:

(Start: 12 @101525 has 7 MA's), (14, 101633), (16, 101645), (18, 101699), (19, 101702),

Gene: Limpid_194 Start: 101181, Stop: 101360, Start Num: 11

Candidate Starts for Limpid_194:

(1, 100998), (3, 101013), (Start: 11 @101181 has 4 MA's), (13, 101280), (15, 101298), (17, 101310), (18, 101343),

Gene: Muntaha_190 Start: 97289, Stop: 97465, Start Num: 12

Candidate Starts for Muntaha_190:

(4, 97127), (5, 97142), (6, 97166), (7, 97181), (8, 97253), (9, 97262), (Start: 12 @97289 has 7 MA's),

Gene: SeresaTree_199 Start: 101510, Stop: 101701, Start Num: 12

Candidate Starts for SeresaTree_199:

(Start: 12 @101510 has 7 MA's), (14, 101618), (16, 101630), (18, 101684), (19, 101687),

Gene: Sham_192 Start: 102533, Stop: 102724, Start Num: 12

Candidate Starts for Sham_192:

(Start: 12 @102533 has 7 MA's), (19, 102710),

Gene: TunaTartare_200 Start: 104648, Stop: 104839, Start Num: 12

Candidate Starts for TunaTartare_200:

(Start: 12 @104648 has 7 MA's), (19, 104825),

Gene: Wakanda_190 Start: 97570, Stop: 97746, Start Num: 12

Candidate Starts for Wakanda_190:

(2, 97393), (4, 97408), (5, 97423), (7, 97462), (8, 97534), (9, 97543), (Start: 12 @97570 has 7 MA's),