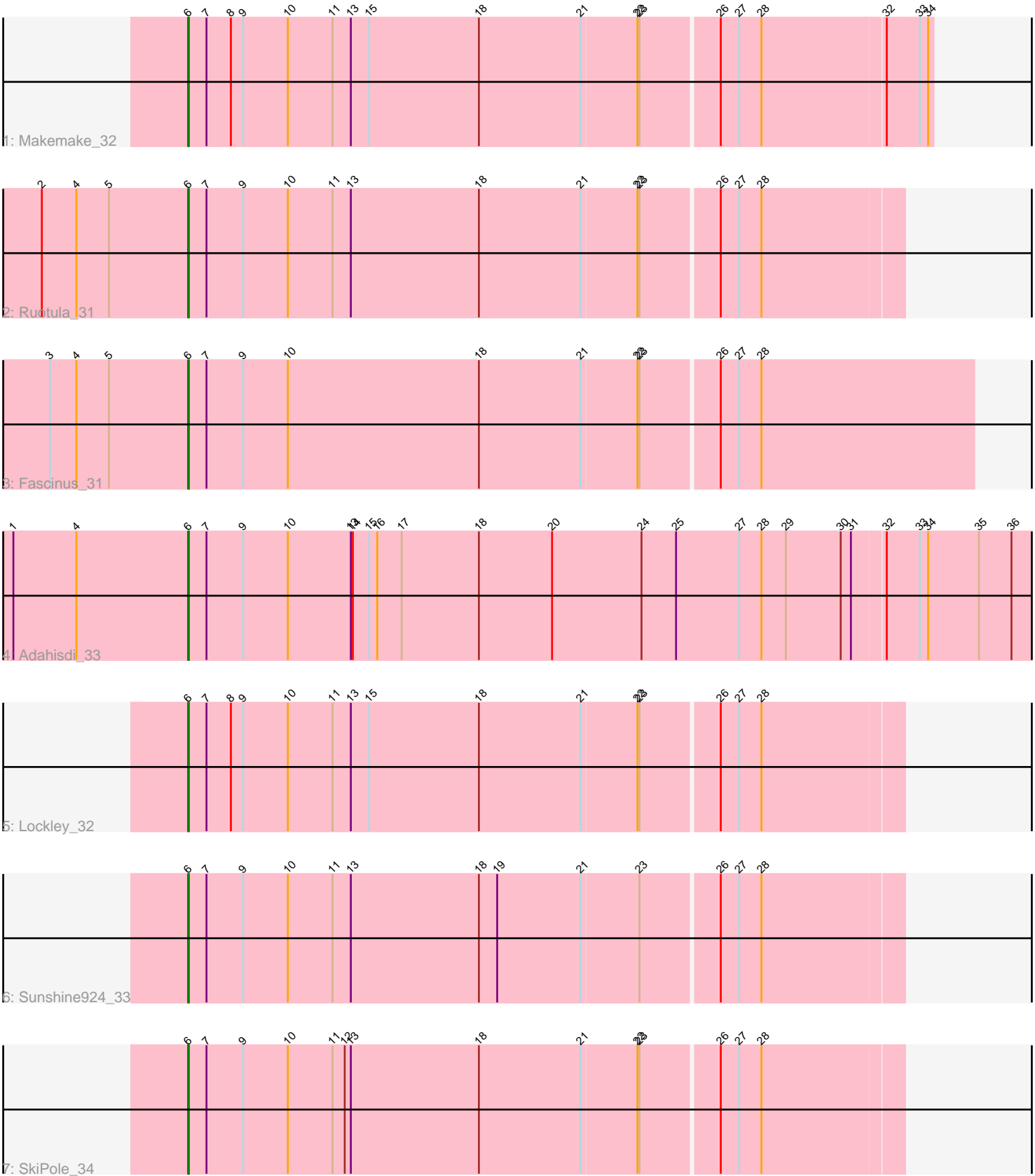


Pham 106994



Note: Tracks are now grouped by subcluster and scaled. Switching in subcluster is indicated by changes in track color. Track scale is now set by default to display the region 30 bp upstream of start 1 to 30 bp downstream of the last possible start. If this default region is judged to be packed too tightly with annotated starts, the track will be further scaled to only show that region of the ORF with annotated starts. This action will be indicated by adding "Zoomed" to the title. For starts, yellow indicates the location of called starts comprised solely of Glimmer/GeneMark auto-annotations, green indicates the location of called starts with at least 1 manual gene annotation.

## Pham 106994 Report

This analysis was run 04/05/24 on database version 557.

Pham number 106994 has 7 members, 0 are drafts.

Phages represented in each track:

- Track 1 : Makemake\_32
- Track 2 : Ruotula\_31
- Track 3 : Fascinus\_31
- Track 4 : Adahisdi\_33
- Track 5 : Lockley\_32
- Track 6 : Sunshine924\_33
- Track 7 : SkiPole\_34

### ***Summary of Final Annotations (See graph section above for start numbers):***

The start number called the most often in the published annotations is 6, it was called in 7 of the 7 non-draft genes in the pham.

Genes that call this "Most Annotated" start:

- Adahisdi\_33, Fascinus\_31, Lockley\_32, Makemake\_32, Ruotula\_31, SkiPole\_34, Sunshine924\_33,

Genes that have the "Most Annotated" start but do not call it:

- 

Genes that do not have the "Most Annotated" start:

- 

### **Summary by start number:**

Start 6:

- Found in 7 of 7 ( 100.0% ) of genes in pham
- Manual Annotations of this start: 7 of 7
- Called 100.0% of time when present
- Phage (with cluster) where this start called: Adahisdi\_33 (A1), Fascinus\_31 (A1), Lockley\_32 (A1), Makemake\_32 (A1), Ruotula\_31 (A1), SkiPole\_34 (A1), Sunshine924\_33 (A1),

### **Summary by clusters:**

There is one cluster represented in this pham: A1

Info for manual annotations of cluster A1:

- Start number 6 was manually annotated 7 times for cluster A1.

### **Gene Information:**

Gene: Adahisdi\_33 Start: 26125, Stop: 27513, Start Num: 6

Candidate Starts for Adahisdi\_33:

(1, 25867), (4, 25960), (Start: 6 @26125 has 7 MA's), (7, 26152), (9, 26206), (10, 26272), (13, 26365), (14, 26368), (15, 26392), (16, 26404), (17, 26440), (18, 26554), (20, 26662), (24, 26794), (25, 26845), (27, 26938), (28, 26971), (29, 27007), (30, 27088), (31, 27103), (32, 27148), (33, 27196), (34, 27208), (35, 27283), (36, 27331),

Gene: Fascinus\_31 Start: 25757, Stop: 26902, Start Num: 6

Candidate Starts for Fascinus\_31:

(3, 25553), (4, 25592), (5, 25640), (Start: 6 @25757 has 7 MA's), (7, 25784), (9, 25838), (10, 25904), (18, 26186), (21, 26336), (22, 26417), (23, 26420), (26, 26531), (27, 26558), (28, 26591),

Gene: Lockley\_32 Start: 25896, Stop: 26933, Start Num: 6

Candidate Starts for Lockley\_32:

(Start: 6 @25896 has 7 MA's), (7, 25923), (8, 25959), (9, 25977), (10, 26043), (11, 26109), (13, 26136), (15, 26163), (18, 26325), (21, 26475), (22, 26556), (23, 26559), (26, 26670), (27, 26697), (28, 26730),

Gene: Makemake\_32 Start: 27150, Stop: 28226, Start Num: 6

Candidate Starts for Makemake\_32:

(Start: 6 @27150 has 7 MA's), (7, 27177), (8, 27213), (9, 27231), (10, 27297), (11, 27363), (13, 27390), (15, 27417), (18, 27579), (21, 27729), (22, 27810), (23, 27813), (26, 27924), (27, 27951), (28, 27984), (32, 28161), (33, 28209), (34, 28221),

Gene: Ruotula\_31 Start: 26555, Stop: 27592, Start Num: 6

Candidate Starts for Ruotula\_31:

(2, 26339), (4, 26390), (5, 26438), (Start: 6 @26555 has 7 MA's), (7, 26582), (9, 26636), (10, 26702), (11, 26768), (13, 26795), (18, 26984), (21, 27134), (22, 27215), (23, 27218), (26, 27329), (27, 27356), (28, 27389),

Gene: SkiPole\_34 Start: 26270, Stop: 27307, Start Num: 6

Candidate Starts for SkiPole\_34:

(Start: 6 @26270 has 7 MA's), (7, 26297), (9, 26351), (10, 26417), (11, 26483), (12, 26501), (13, 26510), (18, 26699), (21, 26849), (22, 26930), (23, 26933), (26, 27044), (27, 27071), (28, 27104),

Gene: Sunshine924\_33 Start: 25776, Stop: 26813, Start Num: 6

Candidate Starts for Sunshine924\_33:

(Start: 6 @25776 has 7 MA's), (7, 25803), (9, 25857), (10, 25923), (11, 25989), (13, 26016), (18, 26205), (19, 26232), (21, 26355), (23, 26439), (26, 26550), (27, 26577), (28, 26610),