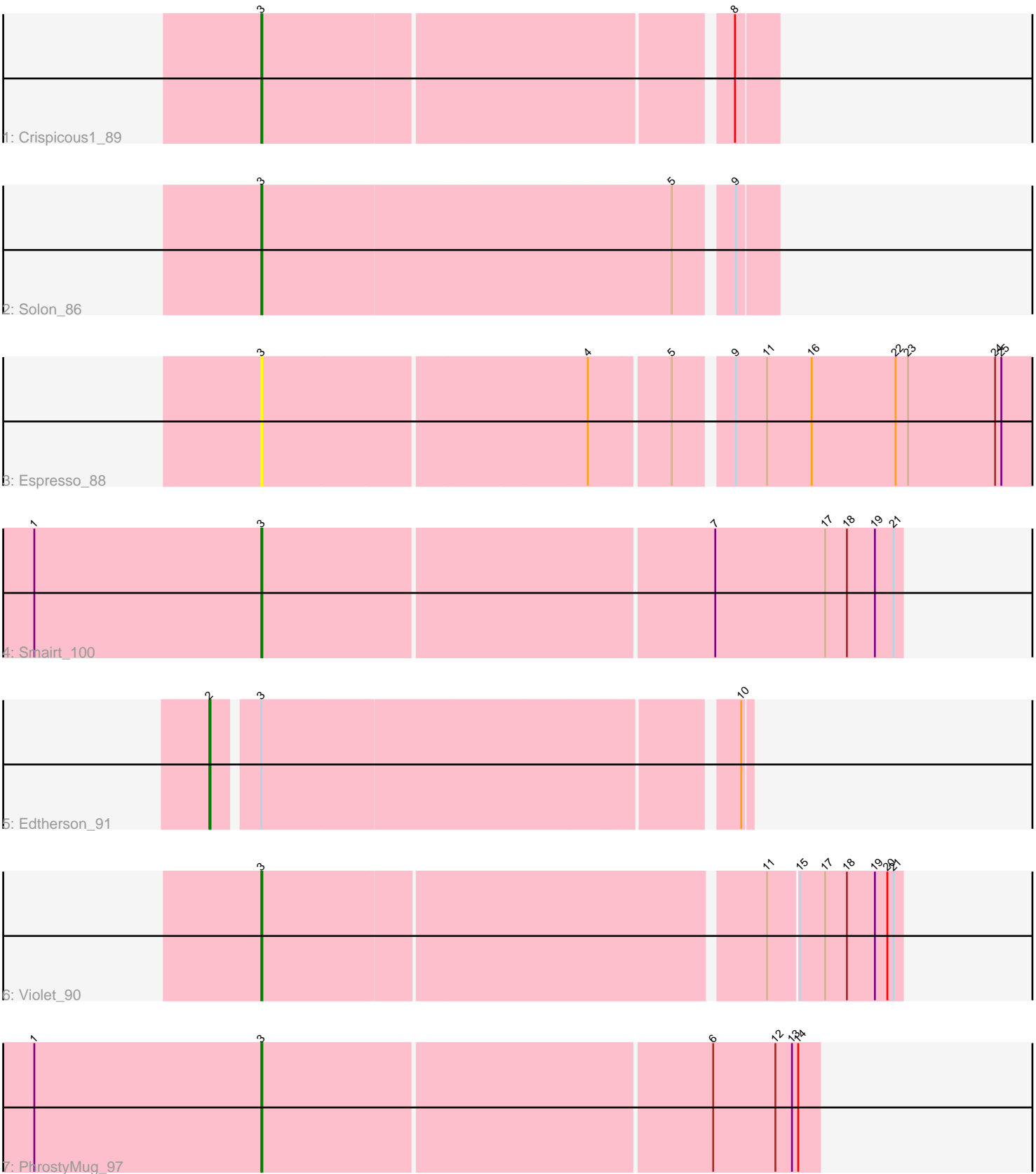


Pham 107183



Note: Tracks are now grouped by subcluster and scaled. Switching in subcluster is indicated by changes in track color. Track scale is now set by default to display the region 30 bp upstream of start 1 to 30 bp downstream of the last possible start. If this default region is judged to be packed too tightly with annotated starts, the track will be further scaled to only show that region of the ORF with annotated starts. This action will be indicated by adding "Zoomed" to the title. For starts, yellow indicates the location of called starts comprised solely of Glimmer/GeneMark auto-annotations, green indicates the location of called starts with at least 1 manual gene annotation.

## Pham 107183 Report

This analysis was run 04/28/24 on database version 559.

Pham number 107183 has 7 members, 1 are drafts.

Phages represented in each track:

- Track 1 : Crispicous1\_89
- Track 2 : Solon\_86
- Track 3 : Espresso\_88
- Track 4 : Smairt\_100
- Track 5 : Edtherson\_91
- Track 6 : Violet\_90
- Track 7 : PhrostyMug\_97

### ***Summary of Final Annotations (See graph section above for start numbers):***

The start number called the most often in the published annotations is 3, it was called in 5 of the 6 non-draft genes in the pham.

Genes that call this "Most Annotated" start:

- Crispicous1\_89, Espresso\_88, PhrostyMug\_97, Smairt\_100, Solon\_86, Violet\_90,

Genes that have the "Most Annotated" start but do not call it:

- Edtherson\_91,

Genes that do not have the "Most Annotated" start:

- 

### **Summary by start number:**

Start 2:

- Found in 1 of 7 ( 14.3% ) of genes in pham
- Manual Annotations of this start: 1 of 6
- Called 100.0% of time when present
- Phage (with cluster) where this start called: Edtherson\_91 (A1),

Start 3:

- Found in 7 of 7 ( 100.0% ) of genes in pham
- Manual Annotations of this start: 5 of 6
- Called 85.7% of time when present

- Phage (with cluster) where this start called: Crispicous1\_89 (A1), Espresso\_88 (A1), PhrostyMug\_97 (A1), Smairt\_100 (A1), Solon\_86 (A1), Violet\_90 (A1),

### **Summary by clusters:**

There is one cluster represented in this pham: A1

Info for manual annotations of cluster A1:

- Start number 2 was manually annotated 1 time for cluster A1.
- Start number 3 was manually annotated 5 times for cluster A1.

### **Gene Information:**

Gene: Crispicous1\_89 Start: 50133, Stop: 50591, Start Num: 3

Candidate Starts for Crispicous1\_89:

(Start: 3 @50133 has 5 MA's), (8, 50553),

Gene: Edtherson\_91 Start: 50755, Stop: 51237, Start Num: 2

Candidate Starts for Edtherson\_91:

(Start: 2 @50755 has 1 MA's), (Start: 3 @50794 has 5 MA's), (10, 51229),

Gene: Espresso\_88 Start: 51154, Stop: 59, Start Num: 3

Candidate Starts for Espresso\_88:

(Start: 3 @51154 has 5 MA's), (4, 51454), (5, 51526), (9, 51574), (11, 51604), (16, 51646), (22, 51727), (23, 51739), (24, 51823), (25, 51829),

Gene: PhrostyMug\_97 Start: 52945, Stop: 53460, Start Num: 3

Candidate Starts for PhrostyMug\_97:

(1, 52726), (Start: 3 @52945 has 5 MA's), (6, 53359), (12, 53419), (13, 53434), (14, 53440),

Gene: Smairt\_100 Start: 53962, Stop: 54558, Start Num: 3

Candidate Starts for Smairt\_100:

(1, 53743), (Start: 3 @53962 has 5 MA's), (7, 54379), (17, 54484), (18, 54505), (19, 54532), (21, 54550),

Gene: Solon\_86 Start: 48781, Stop: 49251, Start Num: 3

Candidate Starts for Solon\_86:

(Start: 3 @48781 has 5 MA's), (5, 49165), (9, 49213),

Gene: Violet\_90 Start: 51803, Stop: 52384, Start Num: 3

Candidate Starts for Violet\_90:

(Start: 3 @51803 has 5 MA's), (11, 52259), (15, 52286), (17, 52310), (18, 52331), (19, 52358), (20, 52370), (21, 52376),