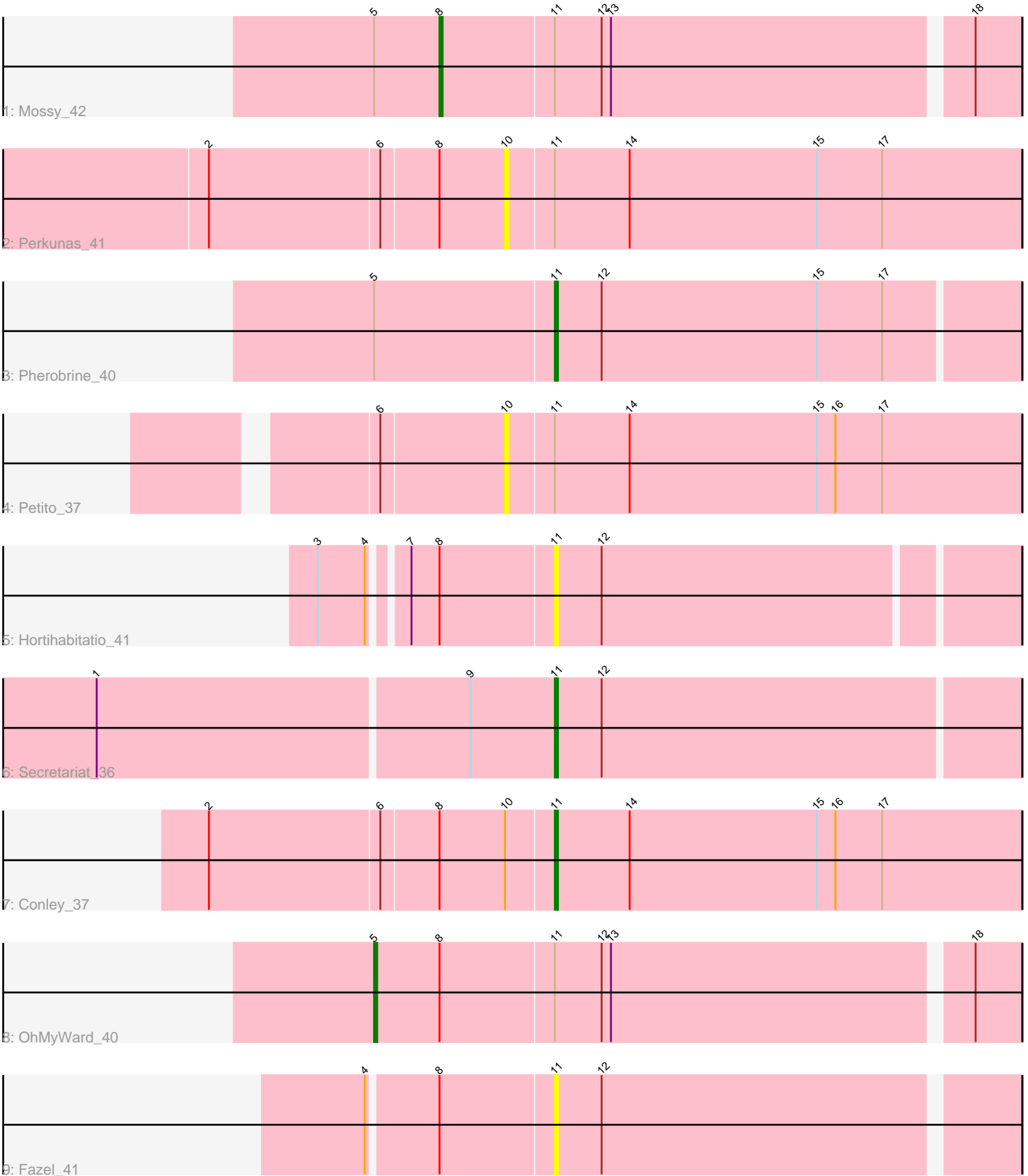


Pham 10969



Note: Tracks are now grouped by subcluster and scaled. Switching in subcluster is indicated by changes in track color. Track scale is now set by default to display the region 30 bp upstream of start 1 to 30 bp downstream of the last possible start. If this default region is judged to be packed too tightly with annotated starts, the track will be further scaled to only show that region of the ORF with annotated starts. This action will be indicated by adding "Zoomed" to the title. For starts, yellow indicates the location of called starts comprised solely of Glimmer/GeneMark auto-annotations, green indicates the location of called starts with at least 1 manual gene annotation.

Pham 10969 Report

This analysis was run 04/28/24 on database version 559.

Pham number 10969 has 9 members, 4 are drafts.

Phages represented in each track:

- Track 1 : Mossy_42
- Track 2 : Perkunas_41
- Track 3 : Pherobrine_40
- Track 4 : Petito_37
- Track 5 : Hortihabitatio_41
- Track 6 : Secretariat_36
- Track 7 : Conley_37
- Track 8 : OhMyWard_40
- Track 9 : Fazel_41

Summary of Final Annotations (See graph section above for start numbers):

The start number called the most often in the published annotations is 11, it was called in 3 of the 5 non-draft genes in the pham.

Genes that call this "Most Annotated" start:

- Conley_37, Fazel_41, Hortihabitatio_41, Pherobrine_40, Secretariat_36,

Genes that have the "Most Annotated" start but do not call it:

- Mossy_42, OhMyWard_40, Perkunas_41, Petito_37,

Genes that do not have the "Most Annotated" start:

-

Summary by start number:

Start 5:

- Found in 3 of 9 (33.3%) of genes in pham
- Manual Annotations of this start: 1 of 5
- Called 33.3% of time when present
- Phage (with cluster) where this start called: OhMyWard_40 (DJ),

Start 8:

- Found in 6 of 9 (66.7%) of genes in pham

- Manual Annotations of this start: 1 of 5
- Called 16.7% of time when present
- Phage (with cluster) where this start called: Mossy_42 (DJ),

Start 10:

- Found in 3 of 9 (33.3%) of genes in pham
- No Manual Annotations of this start.
- Called 66.7% of time when present
- Phage (with cluster) where this start called: Perkunas_41 (DJ), Petito_37 (DJ),

Start 11:

- Found in 9 of 9 (100.0%) of genes in pham
- Manual Annotations of this start: 3 of 5
- Called 55.6% of time when present
- Phage (with cluster) where this start called: Conley_37 (DJ), Fazel_41 (DJ), Hortihabitatio_41 (DJ), Pherobrine_40 (DJ), Secretariat_36 (DJ),

Summary by clusters:

There is one cluster represented in this pham: DJ

Info for manual annotations of cluster DJ:

- Start number 5 was manually annotated 1 time for cluster DJ.
- Start number 8 was manually annotated 1 time for cluster DJ.
- Start number 11 was manually annotated 3 times for cluster DJ.

Gene Information:

Gene: Conley_37 Start: 31099, Stop: 31248, Start Num: 11

Candidate Starts for Conley_37:

(2, 30991), (6, 31045), (Start: 8 @31063 has 1 MA's), (10, 31084), (Start: 11 @31099 has 3 MA's), (14, 31123), (15, 31183), (16, 31189), (17, 31204),

Gene: Fazel_41 Start: 31848, Stop: 31991, Start Num: 11

Candidate Starts for Fazel_41:

(4, 31791), (Start: 8 @31812 has 1 MA's), (Start: 11 @31848 has 3 MA's), (12, 31863),

Gene: Hortihabitatio_41 Start: 32297, Stop: 32440, Start Num: 11

Candidate Starts for Hortihabitatio_41:

(3, 32228), (4, 32243), (7, 32252), (Start: 8 @32261 has 1 MA's), (Start: 11 @32297 has 3 MA's), (12, 32312),

Gene: Mossy_42 Start: 34414, Stop: 34593, Start Num: 8

Candidate Starts for Mossy_42:

(Start: 5 @34393 has 1 MA's), (Start: 8 @34414 has 1 MA's), (Start: 11 @34450 has 3 MA's), (12, 34465), (13, 34468), (18, 34579),

Gene: OhMyWard_40 Start: 33735, Stop: 33935, Start Num: 5

Candidate Starts for OhMyWard_40:

(Start: 5 @33735 has 1 MA's), (Start: 8 @33756 has 1 MA's), (Start: 11 @33792 has 3 MA's), (12, 33807), (13, 33810), (18, 33921),

Gene: Perkunas_41 Start: 30515, Stop: 30679, Start Num: 10

Candidate Starts for Perkunas_41:

(2, 30422), (6, 30476), (Start: 8 @30494 has 1 MA's), (10, 30515), (Start: 11 @30530 has 3 MA's), (14, 30554), (15, 30614), (17, 30635),

Gene: Petito_37 Start: 31618, Stop: 31782, Start Num: 10

Candidate Starts for Petito_37:

(6, 31579), (10, 31618), (Start: 11 @31633 has 3 MA's), (14, 31657), (15, 31717), (16, 31723), (17, 31738),

Gene: Pherobrine_40 Start: 33012, Stop: 33158, Start Num: 11

Candidate Starts for Pherobrine_40:

(Start: 5 @32955 has 1 MA's), (Start: 11 @33012 has 3 MA's), (12, 33027), (15, 33096), (17, 33117),

Gene: Secretariat_36 Start: 31033, Stop: 31179, Start Num: 11

Candidate Starts for Secretariat_36:

(1, 30889), (9, 31006), (Start: 11 @31033 has 3 MA's), (12, 31048),