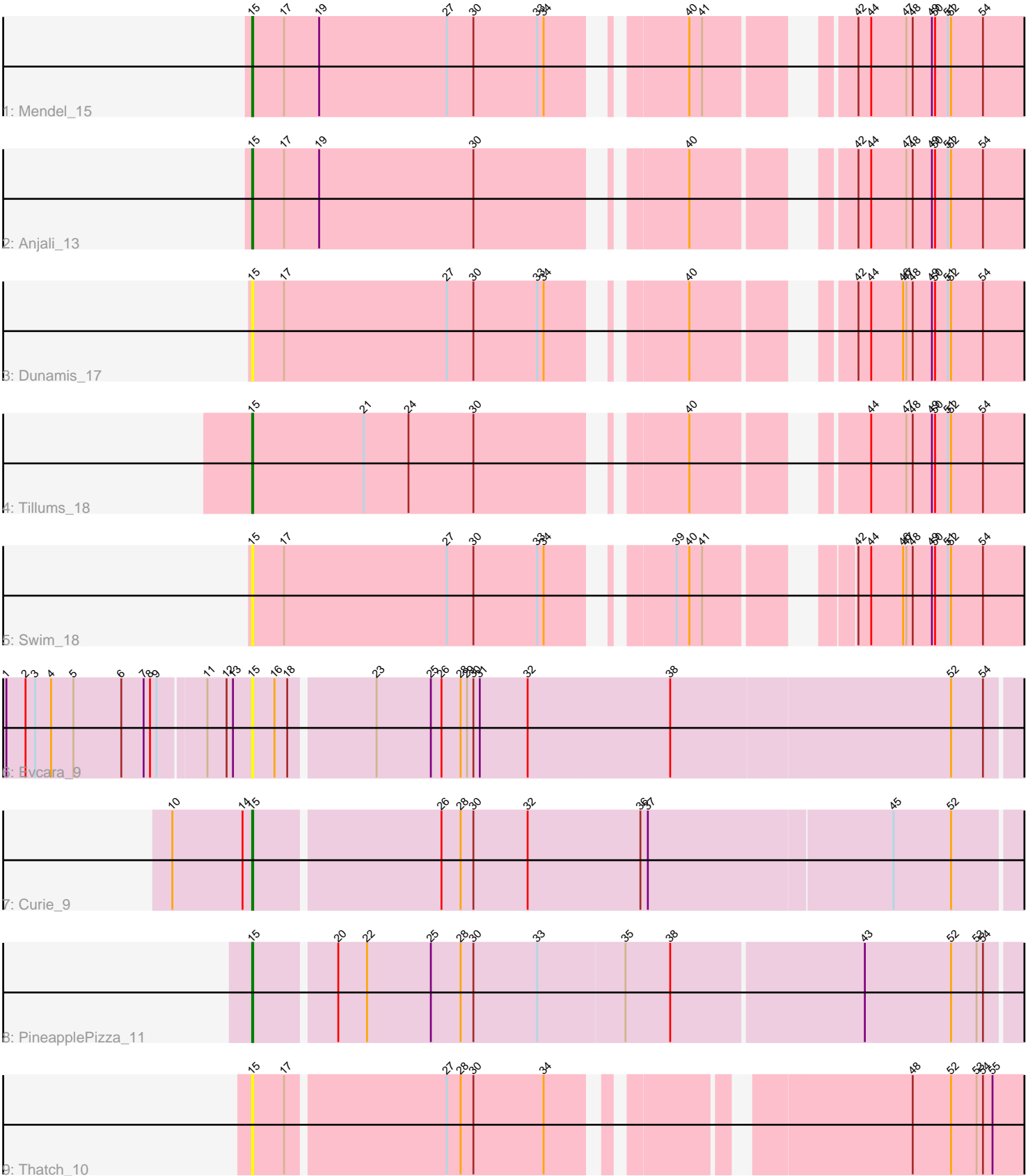


Pham 11016



Note: Tracks are now grouped by subcluster and scaled. Switching in subcluster is indicated by changes in track color. Track scale is now set by default to display the region 30 bp upstream of start 1 to 30 bp downstream of the last possible start. If this default region is judged to be packed too tightly with annotated starts, the track will be further scaled to only show that region of the ORF with annotated starts. This action will be indicated by adding "Zoomed" to the title. For starts, yellow indicates the location of called starts comprised solely of Glimmer/GeneMark auto-annotations, green indicates the location of called starts with at least 1 manual gene annotation.

## Pham 11016 Report

This analysis was run 04/05/24 on database version 557.

Pham number 11016 has 9 members, 4 are drafts.

Phages represented in each track:

- Track 1 : Mendel\_15
- Track 2 : Anjali\_13
- Track 3 : Dunamis\_17
- Track 4 : Tillums\_18
- Track 5 : Swim\_18
- Track 6 : Evcara\_9
- Track 7 : Curie\_9
- Track 8 : PineapplePizza\_11
- Track 9 : Thatch\_10

### ***Summary of Final Annotations (See graph section above for start numbers):***

The start number called the most often in the published annotations is 15, it was called in 5 of the 5 non-draft genes in the pham.

Genes that call this "Most Annotated" start:

- Anjali\_13, Curie\_9, Dunamis\_17, Evcara\_9, Mendel\_15, PineapplePizza\_11, Swim\_18, Thatch\_10, Tillums\_18,

Genes that have the "Most Annotated" start but do not call it:

- 

Genes that do not have the "Most Annotated" start:

- 

### **Summary by start number:**

Start 15:

- Found in 9 of 9 ( 100.0% ) of genes in pham
- Manual Annotations of this start: 5 of 5
- Called 100.0% of time when present
- Phage (with cluster) where this start called: Anjali\_13 (FD), Curie\_9 (GI), Dunamis\_17 (FD), Evcara\_9 (GI), Mendel\_15 (FD), PineapplePizza\_11 (GI), Swim\_18 (FD), Thatch\_10 (UNK), Tillums\_18 (FD),

## Summary by clusters:

There are 3 clusters represented in this pham: UNK, FD, GI,

Info for manual annotations of cluster FD:

- Start number 15 was manually annotated 3 times for cluster FD.

Info for manual annotations of cluster GI:

- Start number 15 was manually annotated 2 times for cluster GI.

## Gene Information:

Gene: Anjali\_13 Start: 10804, Stop: 11493, Start Num: 15

Candidate Starts for Anjali\_13:

(Start: 15 @10804 has 5 MA's), (17, 10834), (19, 10867), (30, 11011), (40, 11176), (42, 11293), (44, 11305), (47, 11338), (48, 11344), (49, 11362), (50, 11365), (51, 11377), (52, 11380), (54, 11410),

Gene: Curie\_9 Start: 8989, Stop: 9708, Start Num: 15

Candidate Starts for Curie\_9:

(10, 8914), (14, 8980), (Start: 15 @8989 has 5 MA's), (26, 9157), (28, 9175), (30, 9187), (32, 9238), (36, 9343), (37, 9349), (45, 9574), (52, 9628),

Gene: Dunamis\_17 Start: 10920, Stop: 11609, Start Num: 15

Candidate Starts for Dunamis\_17:

(Start: 15 @10920 has 5 MA's), (17, 10950), (27, 11103), (30, 11127), (33, 11187), (34, 11193), (40, 11292), (42, 11409), (44, 11421), (46, 11451), (47, 11454), (48, 11460), (49, 11478), (50, 11481), (51, 11493), (52, 11496), (54, 11526),

Gene: Evcara\_9 Start: 8917, Stop: 9630, Start Num: 15

Candidate Starts for Evcara\_9:

(1, 8692), (2, 8710), (3, 8719), (4, 8734), (5, 8755), (6, 8800), (7, 8821), (8, 8827), (9, 8833), (11, 8875), (12, 8893), (13, 8899), (Start: 15 @8917 has 5 MA's), (16, 8938), (18, 8950), (23, 9025), (25, 9076), (26, 9085), (28, 9103), (29, 9109), (30, 9115), (31, 9121), (32, 9166), (38, 9298), (52, 9556), (54, 9586),

Gene: Mendel\_15 Start: 10802, Stop: 11491, Start Num: 15

Candidate Starts for Mendel\_15:

(Start: 15 @10802 has 5 MA's), (17, 10832), (19, 10865), (27, 10985), (30, 11009), (33, 11069), (34, 11075), (40, 11174), (41, 11186), (42, 11291), (44, 11303), (47, 11336), (48, 11342), (49, 11360), (50, 11363), (51, 11375), (52, 11378), (54, 11408),

Gene: PineapplePizza\_11 Start: 9659, Stop: 10372, Start Num: 15

Candidate Starts for PineapplePizza\_11:

(Start: 15 @9659 has 5 MA's), (20, 9731), (22, 9758), (25, 9818), (28, 9845), (30, 9857), (33, 9917), (35, 9998), (38, 10040), (43, 10217), (52, 10298), (53, 10322), (54, 10328),

Gene: Swim\_18 Start: 11206, Stop: 11895, Start Num: 15

Candidate Starts for Swim\_18:

(Start: 15 @11206 has 5 MA's), (17, 11236), (27, 11389), (30, 11413), (33, 11473), (34, 11479), (39, 11566), (40, 11578), (41, 11590), (42, 11695), (44, 11707), (46, 11737), (47, 11740), (48, 11746), (49, 11764), (50, 11767), (51, 11779), (52, 11782), (54, 11812),

Gene: Thatch\_10 Start: 9584, Stop: 10252, Start Num: 15

Candidate Starts for Thatch\_10:

(Start: 15 @9584 has 5 MA's), (17, 9614), (27, 9758), (28, 9770), (30, 9782), (34, 9848), (48, 10133), (52, 10169), (53, 10193), (54, 10199), (55, 10208),

Gene: Tillums\_18 Start: 11349, Stop: 12038, Start Num: 15

Candidate Starts for Tillums\_18:

(Start: 15 @11349 has 5 MA's), (21, 11454), (24, 11496), (30, 11556), (40, 11721), (44, 11850), (47, 11883), (48, 11889), (49, 11907), (50, 11910), (51, 11922), (52, 11925), (54, 11955),