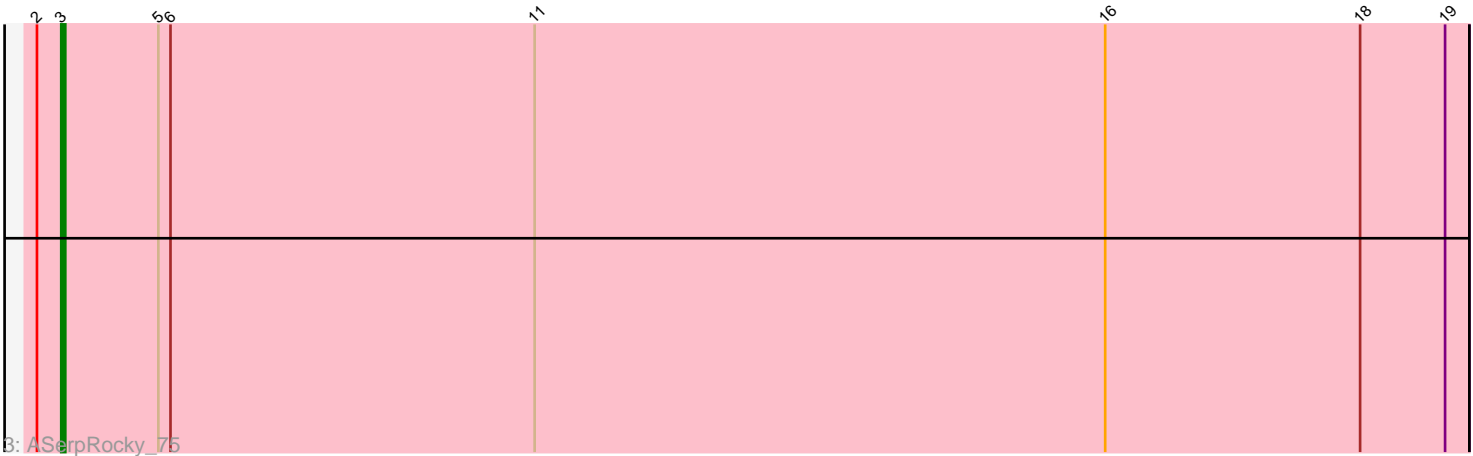
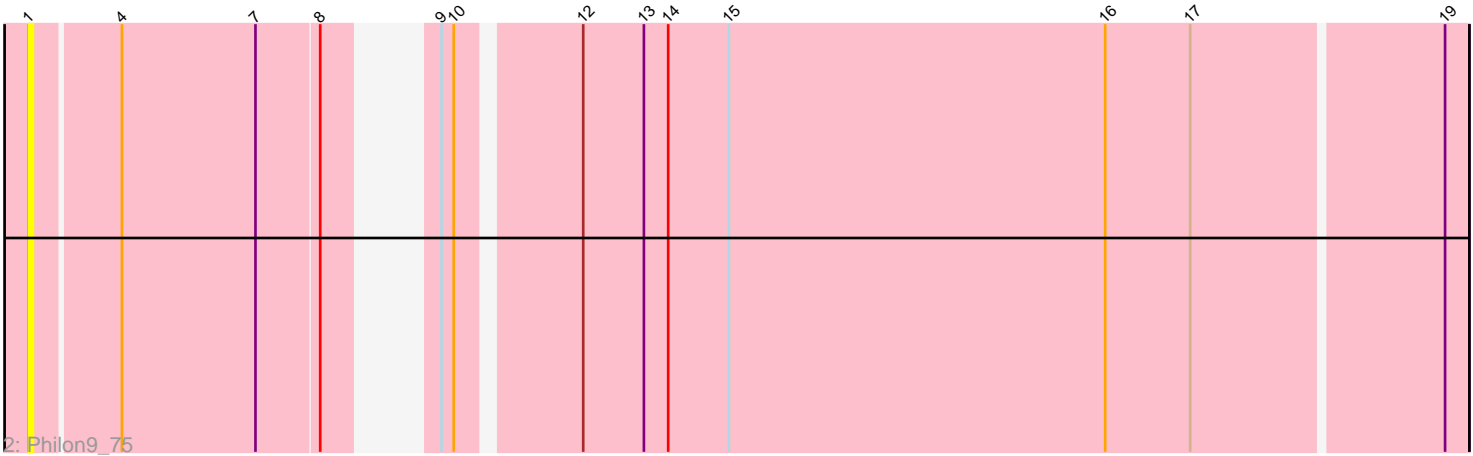
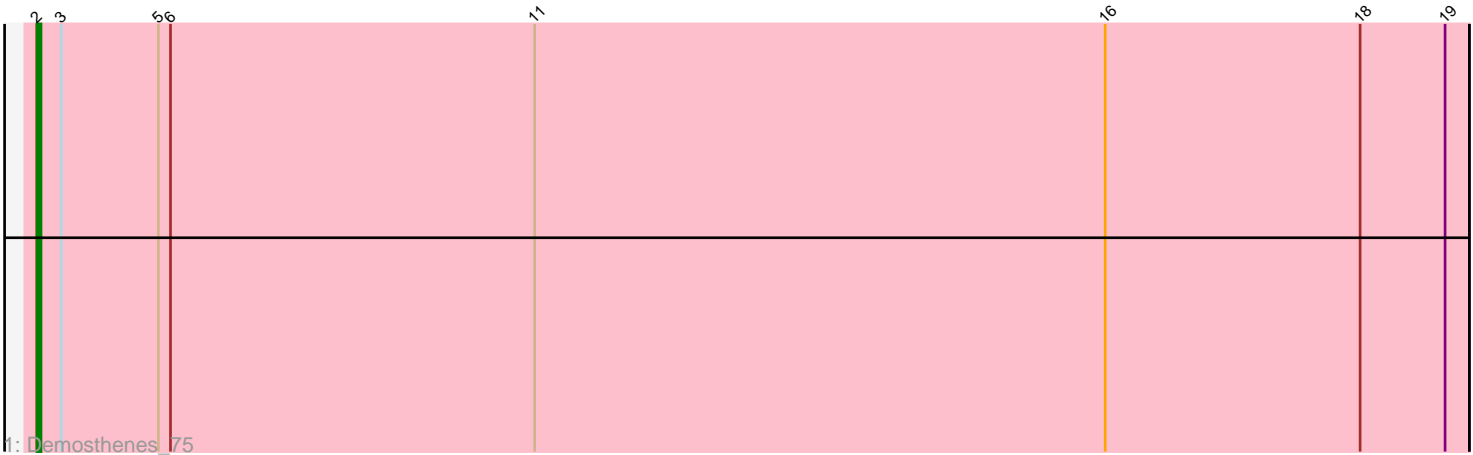


Pham 11282



Note: Tracks are now grouped by subcluster and scaled. Switching in subcluster is indicated by changes in track color. Track scale is now set by default to display the region 30 bp upstream of start 1 to 30 bp downstream of the last possible start. If this default region is judged to be packed too tightly with annotated starts, the track will be further scaled to only show that region of the ORF with annotated starts. This action will be indicated by adding "Zoomed" to the title. For starts, yellow indicates the location of called starts comprised solely of Glimmer/GeneMark auto-annotations, green indicates the location of called starts with at least 1 manual gene annotation.

Pham 11282 Report

This analysis was run 04/28/24 on database version 559.

Pham number 11282 has 3 members, 1 are drafts.

Phages represented in each track:

- Track 1 : Demosthenes_75
- Track 2 : Philon9_75
- Track 3 : ASerpRocky_75

Summary of Final Annotations (See graph section above for start numbers):

The start number called the most often in the published annotations is 2, it was called in 1 of the 2 non-draft genes in the pham.

Genes that call this "Most Annotated" start:

- Demosthenes_75,

Genes that have the "Most Annotated" start but do not call it:

- ASerpRocky_75,

Genes that do not have the "Most Annotated" start:

- Philon9_75,

Summary by start number:

Start 1:

- Found in 1 of 3 (33.3%) of genes in pham
- No Manual Annotations of this start.
- Called 100.0% of time when present
- Phage (with cluster) where this start called: Philon9_75 (CS4),

Start 2:

- Found in 2 of 3 (66.7%) of genes in pham
- Manual Annotations of this start: 1 of 2
- Called 50.0% of time when present
- Phage (with cluster) where this start called: Demosthenes_75 (CS4),

Start 3:

- Found in 2 of 3 (66.7%) of genes in pham

- Manual Annotations of this start: 1 of 2
- Called 50.0% of time when present
- Phage (with cluster) where this start called: ASerpRocky_75 (CS4),

Summary by clusters:

There is one cluster represented in this pham: CS4

Info for manual annotations of cluster CS4:

- Start number 2 was manually annotated 1 time for cluster CS4.
- Start number 3 was manually annotated 1 time for cluster CS4.

Gene Information:

Gene: ASerpRocky_75 Start: 62551, Stop: 62204, Start Num: 3

Candidate Starts for ASerpRocky_75:

(Start: 2 @62557 has 1 MA's), (Start: 3 @62551 has 1 MA's), (5, 62527), (6, 62524), (11, 62434), (16, 62293), (18, 62230), (19, 62209),

Gene: Demosthenes_75 Start: 62579, Stop: 62226, Start Num: 2

Candidate Starts for Demosthenes_75:

(Start: 2 @62579 has 1 MA's), (Start: 3 @62573 has 1 MA's), (5, 62549), (6, 62546), (11, 62456), (16, 62315), (18, 62252), (19, 62231),

Gene: Philon9_75 Start: 63601, Stop: 63275, Start Num: 1

Candidate Starts for Philon9_75:

(1, 63601), (4, 63580), (7, 63547), (8, 63532), (9, 63520), (10, 63517), (12, 63490), (13, 63475), (14, 63469), (15, 63454), (16, 63361), (17, 63340), (19, 63280),