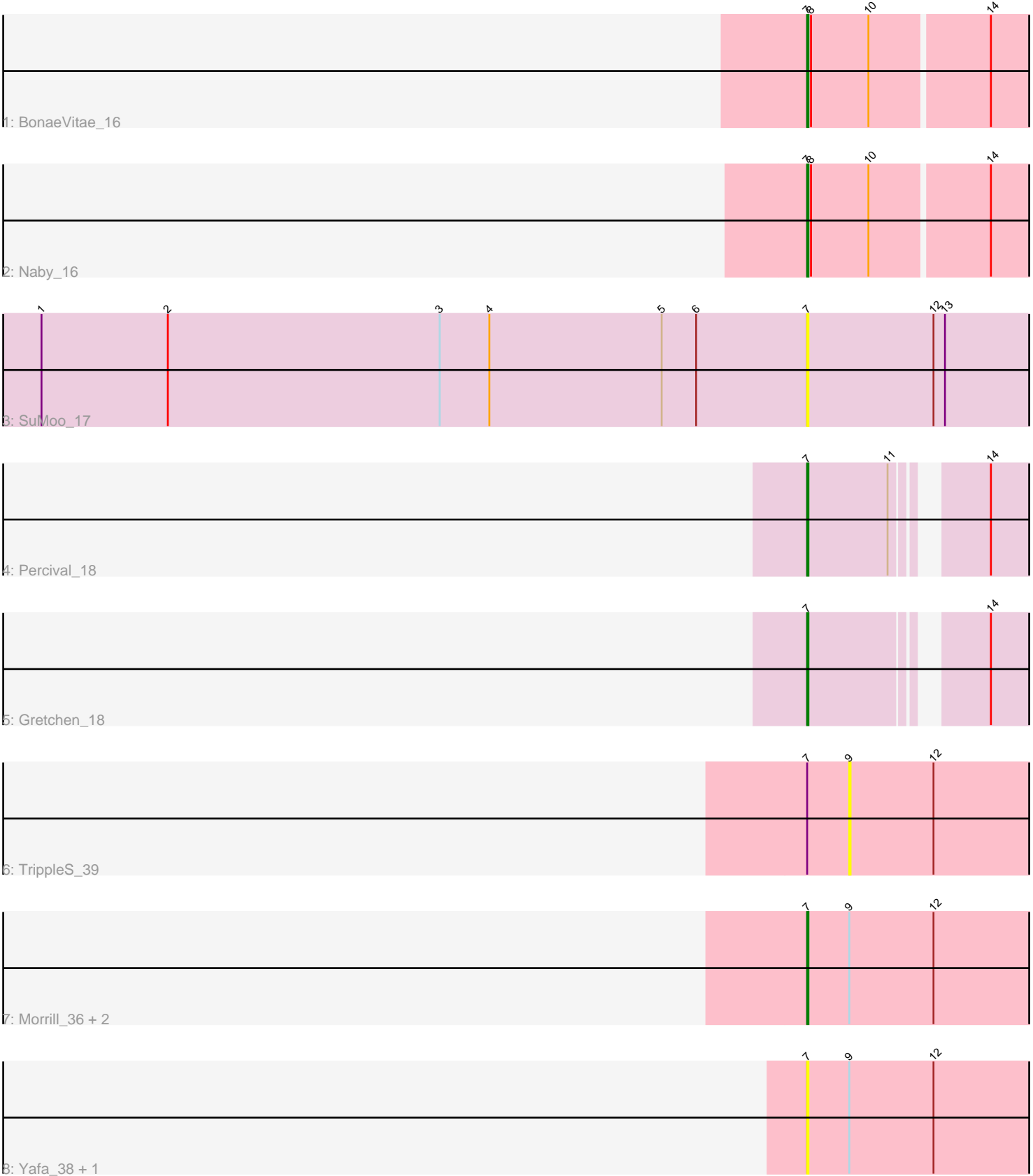


Pham 131167



Note: Tracks are now grouped by subcluster and scaled. Switching in subcluster is indicated by changes in track color. Track scale is now set by default to display the region 30 bp upstream of start 1 to 30 bp downstream of the last possible start. If this default region is judged to be packed too tightly with annotated starts, the track will be further scaled to only show that region of the ORF with annotated starts. This action will be indicated by adding "Zoomed" to the title. For starts, yellow indicates the location of called starts comprised solely of Glimmer/GeneMark auto-annotations, green indicates the location of called starts with at least 1 manual gene annotation.

Pham 131167 Report

This analysis was run 04/28/24 on database version 559.

Pham number 131167 has 11 members, 5 are drafts.

Phages represented in each track:

- Track 1 : BonaeVitae_16
- Track 2 : Naby_16
- Track 3 : SuMoo_17
- Track 4 : Percival_18
- Track 5 : Gretchen_18
- Track 6 : TrippleS_39
- Track 7 : Morrill_36, Astartes_38, Atraxi_36
- Track 8 : Yafa_38, ThirteenKH_37

Summary of Final Annotations (See graph section above for start numbers):

The start number called the most often in the published annotations is 7, it was called in 6 of the 6 non-draft genes in the pham.

Genes that call this "Most Annotated" start:

- Astartes_38, Atraxi_36, BonaeVitae_16, Gretchen_18, Morrill_36, Naby_16, Percival_18, SuMoo_17, ThirteenKH_37, Yafa_38,

Genes that have the "Most Annotated" start but do not call it:

- TrippleS_39,

Genes that do not have the "Most Annotated" start:

-

Summary by start number:

Start 7:

- Found in 11 of 11 (100.0%) of genes in pham
- Manual Annotations of this start: 6 of 6
- Called 90.9% of time when present
- Phage (with cluster) where this start called: Astartes_38 (EK2), Atraxi_36 (EK2), BonaeVitae_16 (EE), Gretchen_18 (EH), Morrill_36 (EK2), Naby_16 (EE), Percival_18 (EH), SuMoo_17 (EH), ThirteenKH_37 (EK2), Yafa_38 (EK2),

Start 9:

- Found in 6 of 11 (54.5%) of genes in pham
- No Manual Annotations of this start.
- Called 16.7% of time when present
- Phage (with cluster) where this start called: TrippleS_39 (EK2),

Summary by clusters:

There are 3 clusters represented in this pham: EE, EK2, EH,

Info for manual annotations of cluster EE:

- Start number 7 was manually annotated 2 times for cluster EE.

Info for manual annotations of cluster EH:

- Start number 7 was manually annotated 2 times for cluster EH.

Info for manual annotations of cluster EK2:

- Start number 7 was manually annotated 2 times for cluster EK2.

Gene Information:

Gene: Astartes_38 Start: 40003, Stop: 40197, Start Num: 7

Candidate Starts for Astartes_38:

(Start: 7 @40003 has 6 MA's), (9, 40036), (12, 40102),

Gene: Atraxi_36 Start: 39795, Stop: 39989, Start Num: 7

Candidate Starts for Atraxi_36:

(Start: 7 @39795 has 6 MA's), (9, 39828), (12, 39894),

Gene: BonaeVitae_16 Start: 12640, Stop: 12816, Start Num: 7

Candidate Starts for BonaeVitae_16:

(Start: 7 @12640 has 6 MA's), (8, 12643), (10, 12688), (14, 12778),

Gene: Gretchen_18 Start: 16935, Stop: 17081, Start Num: 7

Candidate Starts for Gretchen_18:

(Start: 7 @16935 has 6 MA's), (14, 17052),

Gene: Morrill_36 Start: 39776, Stop: 39970, Start Num: 7

Candidate Starts for Morrill_36:

(Start: 7 @39776 has 6 MA's), (9, 39809), (12, 39875),

Gene: Naby_16 Start: 12637, Stop: 12813, Start Num: 7

Candidate Starts for Naby_16:

(Start: 7 @12637 has 6 MA's), (8, 12640), (10, 12685), (14, 12775),

Gene: Percival_18 Start: 16769, Stop: 16915, Start Num: 7

Candidate Starts for Percival_18:

(Start: 7 @16769 has 6 MA's), (11, 16832), (14, 16886),

Gene: SuMoo_17 Start: 15090, Stop: 15272, Start Num: 7

Candidate Starts for SuMoo_17:

(1, 14490), (2, 14589), (3, 14802), (4, 14841), (5, 14976), (6, 15003), (Start: 7 @15090 has 6 MA's),
(12, 15189), (13, 15198),

Gene: ThirteenKH_37 Start: 39786, Stop: 39980, Start Num: 7

Candidate Starts for ThirteenKH_37:

(Start: 7 @39786 has 6 MA's), (9, 39819), (12, 39885),

Gene: TrippleS_39 Start: 39967, Stop: 40128, Start Num: 9

Candidate Starts for TrippleS_39:

(Start: 7 @39934 has 6 MA's), (9, 39967), (12, 40033),

Gene: Yafa_38 Start: 39690, Stop: 39884, Start Num: 7

Candidate Starts for Yafa_38:

(Start: 7 @39690 has 6 MA's), (9, 39723), (12, 39789),