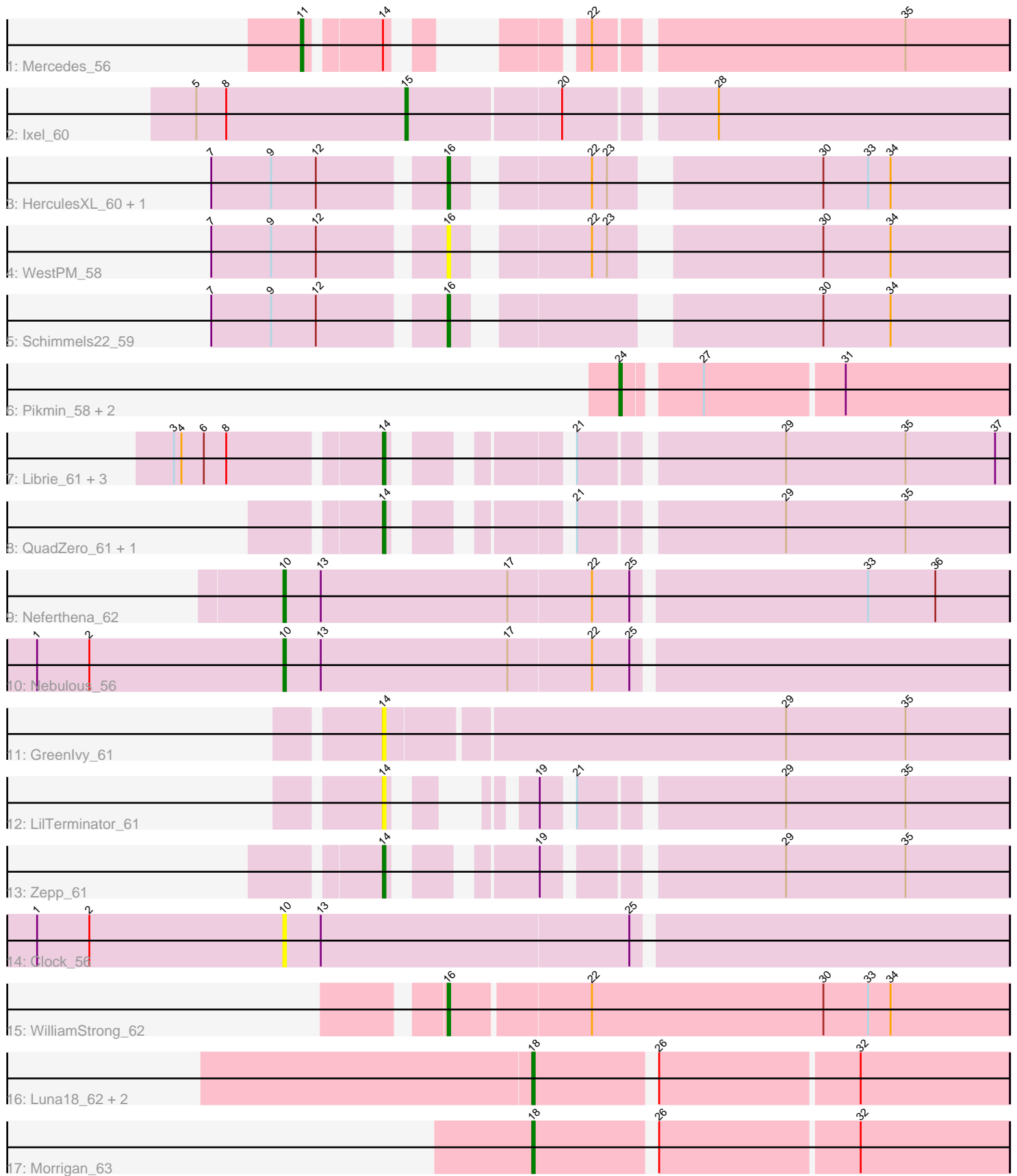


# Pham 134000



Note: Tracks are now grouped by subcluster and scaled. Switching in subcluster is indicated by changes in track color. Track scale is now set by default to display the region 30 bp upstream of start 1 to 30 bp downstream of the last possible start. If this default region is judged to be packed too tightly with annotated starts, the track will be further scaled to only show that region of the ORF with annotated starts. This action will be indicated by adding "Zoomed" to the title. For starts, yellow indicates the location of called starts comprised solely of Glimmer/GeneMark auto-annotations, green indicates the location of called starts with at least 1 manual gene annotation.

## Pham 134000 Report

This analysis was run 04/05/24 on database version 557.

Pham number 134000 has 26 members, 5 are drafts.

Phages represented in each track:

- Track 1 : Mercedes\_56
- Track 2 : Ixel\_60
- Track 3 : HerculesXL\_60, Tinyman4\_58
- Track 4 : WestPM\_58
- Track 5 : Schimmels22\_59
- Track 6 : Pikmin\_58, Casey\_58, Pajaza\_58
- Track 7 : Librie\_61, Hasitha\_61, CaptainRex\_61, Fulton\_61
- Track 8 : QuadZero\_61, Zayuliv\_61
- Track 9 : Neferthena\_62
- Track 10 : Nebulous\_56
- Track 11 : Greenlvy\_61
- Track 12 : LilTerminator\_61
- Track 13 : Zepp\_61
- Track 14 : Clock\_56
- Track 15 : WilliamStrong\_62
- Track 16 : Luna18\_62, KatChan\_61, Chepli\_62
- Track 17 : Morigan\_63

### ***Summary of Final Annotations (See graph section above for start numbers):***

The start number called the most often in the published annotations is 14, it was called in 6 of the 21 non-draft genes in the pham.

Genes that call this "Most Annotated" start:

- CaptainRex\_61, Fulton\_61, Greenlvy\_61, Hasitha\_61, Librie\_61, LilTerminator\_61, QuadZero\_61, Zayuliv\_61, Zepp\_61,

Genes that have the "Most Annotated" start but do not call it:

- Mercedes\_56,

Genes that do not have the "Most Annotated" start:

- Casey\_58, Chepli\_62, Clock\_56, HerculesXL\_60, Ixel\_60, KatChan\_61, Luna18\_62, Morigan\_63, Nebulous\_56, Neferthena\_62, Pajaza\_58, Pikmin\_58, Schimmels22\_59, Tinyman4\_58, WestPM\_58, WilliamStrong\_62,

## Summary by start number:

### Start 10:

- Found in 3 of 26 ( 11.5% ) of genes in pham
- Manual Annotations of this start: 2 of 21
- Called 100.0% of time when present
- Phage (with cluster) where this start called: Clock\_56 (EA5), Nebulous\_56 (EA5), Neferthema\_62 (EA5),

### Start 11:

- Found in 1 of 26 ( 3.8% ) of genes in pham
- Manual Annotations of this start: 1 of 21
- Called 100.0% of time when present
- Phage (with cluster) where this start called: Mercedes\_56 (EA),

### Start 14:

- Found in 10 of 26 ( 38.5% ) of genes in pham
- Manual Annotations of this start: 6 of 21
- Called 90.0% of time when present
- Phage (with cluster) where this start called: CaptainRex\_61 (EA5), Fulton\_61 (EA5), Greenlvy\_61 (EA5), Hasitha\_61 (EA5), Librie\_61 (EA5), LilTerminator\_61 (EA5), QuadZero\_61 (EA5), Zayuliv\_61 (EA5), Zepp\_61 (EA5),

### Start 15:

- Found in 1 of 26 ( 3.8% ) of genes in pham
- Manual Annotations of this start: 1 of 21
- Called 100.0% of time when present
- Phage (with cluster) where this start called: Ixel\_60 (EA11),

### Start 16:

- Found in 5 of 26 ( 19.2% ) of genes in pham
- Manual Annotations of this start: 4 of 21
- Called 100.0% of time when present
- Phage (with cluster) where this start called: HerculesXL\_60 (EA11), Schimmels22\_59 (EA11), Tinyman4\_58 (EA11), WestPM\_58 (EA11), WilliamStrong\_62 (EA6),

### Start 18:

- Found in 4 of 26 ( 15.4% ) of genes in pham
- Manual Annotations of this start: 4 of 21
- Called 100.0% of time when present
- Phage (with cluster) where this start called: Chepli\_62 (EA6), KatChan\_61 (EA6), Luna18\_62 (EA6), Morigan\_63 (EA6),

### Start 24:

- Found in 3 of 26 ( 11.5% ) of genes in pham
- Manual Annotations of this start: 3 of 21
- Called 100.0% of time when present
- Phage (with cluster) where this start called: Casey\_58 (EA3), Pajaza\_58 (EA3), Pikmin\_58 (EA3),

## Summary by clusters:

There are 5 clusters represented in this pham: EA11, EA3, EA5, EA, EA6,

Info for manual annotations of cluster EA:

- Start number 11 was manually annotated 1 time for cluster EA.

Info for manual annotations of cluster EA11:

- Start number 15 was manually annotated 1 time for cluster EA11.
- Start number 16 was manually annotated 3 times for cluster EA11.

Info for manual annotations of cluster EA3:

- Start number 24 was manually annotated 3 times for cluster EA3.

Info for manual annotations of cluster EA5:

- Start number 10 was manually annotated 2 times for cluster EA5.
- Start number 14 was manually annotated 6 times for cluster EA5.

Info for manual annotations of cluster EA6:

- Start number 16 was manually annotated 1 time for cluster EA6.
- Start number 18 was manually annotated 4 times for cluster EA6.

### ***Gene Information:***

Gene: CaptainRex\_61 Start: 39013, Stop: 39228, Start Num: 14

Candidate Starts for CaptainRex\_61:

(3, 38935), (4, 38938), (6, 38947), (8, 38956), (Start: 14 @39013 has 6 MA's), (21, 39064), (29, 39139), (35, 39187), (37, 39223),

Gene: Casey\_58 Start: 38627, Stop: 38773, Start Num: 24

Candidate Starts for Casey\_58:

(Start: 24 @38627 has 3 MA's), (27, 38654), (31, 38708),

Gene: Chepli\_62 Start: 39549, Stop: 39731, Start Num: 18

Candidate Starts for Chepli\_62:

(Start: 18 @39549 has 4 MA's), (26, 39594), (32, 39672),

Gene: Clock\_56 Start: 40673, Stop: 40957, Start Num: 10

Candidate Starts for Clock\_56:

(1, 40574), (2, 40595), (Start: 10 @40673 has 2 MA's), (13, 40688), (25, 40811),

Gene: Fulton\_61 Start: 39014, Stop: 39229, Start Num: 14

Candidate Starts for Fulton\_61:

(3, 38936), (4, 38939), (6, 38948), (8, 38957), (Start: 14 @39014 has 6 MA's), (21, 39065), (29, 39140), (35, 39188), (37, 39224),

Gene: Greenlvy\_61 Start: 39358, Stop: 39603, Start Num: 14

Candidate Starts for Greenlvy\_61:

(Start: 14 @39358 has 6 MA's), (29, 39514), (35, 39562),

Gene: Hasitha\_61 Start: 39024, Stop: 39239, Start Num: 14

Candidate Starts for Hasitha\_61:

(3, 38946), (4, 38949), (6, 38958), (8, 38967), (Start: 14 @39024 has 6 MA's), (21, 39075), (29, 39150), (35, 39198), (37, 39234),

Gene: HerculesXL\_60 Start: 38481, Stop: 38678, Start Num: 16

Candidate Starts for HerculesXL\_60:

(7, 38394), (9, 38418), (12, 38436), (Start: 16 @38481 has 4 MA's), (22, 38526), (23, 38532), (30, 38604), (33, 38622), (34, 38631),

Gene: Ixel\_60 Start: 39807, Stop: 40037, Start Num: 15

Candidate Starts for Ixel\_60:

(5, 39729), (8, 39741), (Start: 15 @39807 has 1 MA's), (20, 39867), (28, 39921),

Gene: KatChan\_61 Start: 39566, Stop: 39748, Start Num: 18

Candidate Starts for KatChan\_61:

(Start: 18 @39566 has 4 MA's), (26, 39611), (32, 39689),

Gene: Librie\_61 Start: 39013, Stop: 39228, Start Num: 14

Candidate Starts for Librie\_61:

(3, 38935), (4, 38938), (6, 38947), (8, 38956), (Start: 14 @39013 has 6 MA's), (21, 39064), (29, 39139), (35, 39187), (37, 39223),

Gene: LilTerminator\_61 Start: 39040, Stop: 39240, Start Num: 14

Candidate Starts for LilTerminator\_61:

(Start: 14 @39040 has 6 MA's), (19, 39067), (21, 39076), (29, 39151), (35, 39199),

Gene: Luna18\_62 Start: 39566, Stop: 39748, Start Num: 18

Candidate Starts for Luna18\_62:

(Start: 18 @39566 has 4 MA's), (26, 39611), (32, 39689),

Gene: Mercedes\_56 Start: 39258, Stop: 39485, Start Num: 11

Candidate Starts for Mercedes\_56:

(Start: 11 @39258 has 1 MA's), (Start: 14 @39285 has 6 MA's), (22, 39327), (35, 39444),

Gene: Morrigan\_63 Start: 39618, Stop: 39800, Start Num: 18

Candidate Starts for Morrigan\_63:

(Start: 18 @39618 has 4 MA's), (26, 39663), (32, 39741),

Gene: Nebulous\_56 Start: 40430, Stop: 40714, Start Num: 10

Candidate Starts for Nebulous\_56:

(1, 40331), (2, 40352), (Start: 10 @40430 has 2 MA's), (13, 40445), (17, 40520), (22, 40553), (25, 40568),

Gene: Neferthema\_62 Start: 40624, Stop: 40908, Start Num: 10

Candidate Starts for Neferthema\_62:

(Start: 10 @40624 has 2 MA's), (13, 40639), (17, 40714), (22, 40747), (25, 40762), (33, 40852), (36, 40879),

Gene: Pajaza\_58 Start: 38627, Stop: 38773, Start Num: 24

Candidate Starts for Pajaza\_58:

(Start: 24 @38627 has 3 MA's), (27, 38654), (31, 38708),

Gene: Pikmin\_58 Start: 38627, Stop: 38773, Start Num: 24

Candidate Starts for Pikmin\_58:

(Start: 24 @38627 has 3 MA's), (27, 38654), (31, 38708),

Gene: QuadZero\_61 Start: 39116, Stop: 39331, Start Num: 14

Candidate Starts for QuadZero\_61:

(Start: 14 @39116 has 6 MA's), (21, 39167), (29, 39242), (35, 39290),

Gene: Schimmels22\_59 Start: 38802, Stop: 38999, Start Num: 16

Candidate Starts for Schimmels22\_59:

(7, 38715), (9, 38739), (12, 38757), (Start: 16 @38802 has 4 MA's), (30, 38925), (34, 38952),

Gene: Tinyman4\_58 Start: 38476, Stop: 38673, Start Num: 16

Candidate Starts for Tinyman4\_58:

(7, 38389), (9, 38413), (12, 38431), (Start: 16 @38476 has 4 MA's), (22, 38521), (23, 38527), (30, 38599), (33, 38617), (34, 38626),

Gene: WestPM\_58 Start: 38661, Stop: 38858, Start Num: 16

Candidate Starts for WestPM\_58:

(7, 38574), (9, 38598), (12, 38616), (Start: 16 @38661 has 4 MA's), (22, 38706), (23, 38712), (30, 38784), (34, 38811),

Gene: WilliamStrong\_62 Start: 39951, Stop: 40172, Start Num: 16

Candidate Starts for WilliamStrong\_62:

(Start: 16 @39951 has 4 MA's), (22, 40005), (30, 40098), (33, 40116), (34, 40125),

Gene: Zayuliv\_61 Start: 39687, Stop: 39902, Start Num: 14

Candidate Starts for Zayuliv\_61:

(Start: 14 @39687 has 6 MA's), (21, 39738), (29, 39813), (35, 39861),

Gene: Zepp\_61 Start: 39245, Stop: 39460, Start Num: 14

Candidate Starts for Zepp\_61:

(Start: 14 @39245 has 6 MA's), (19, 39287), (29, 39371), (35, 39419),