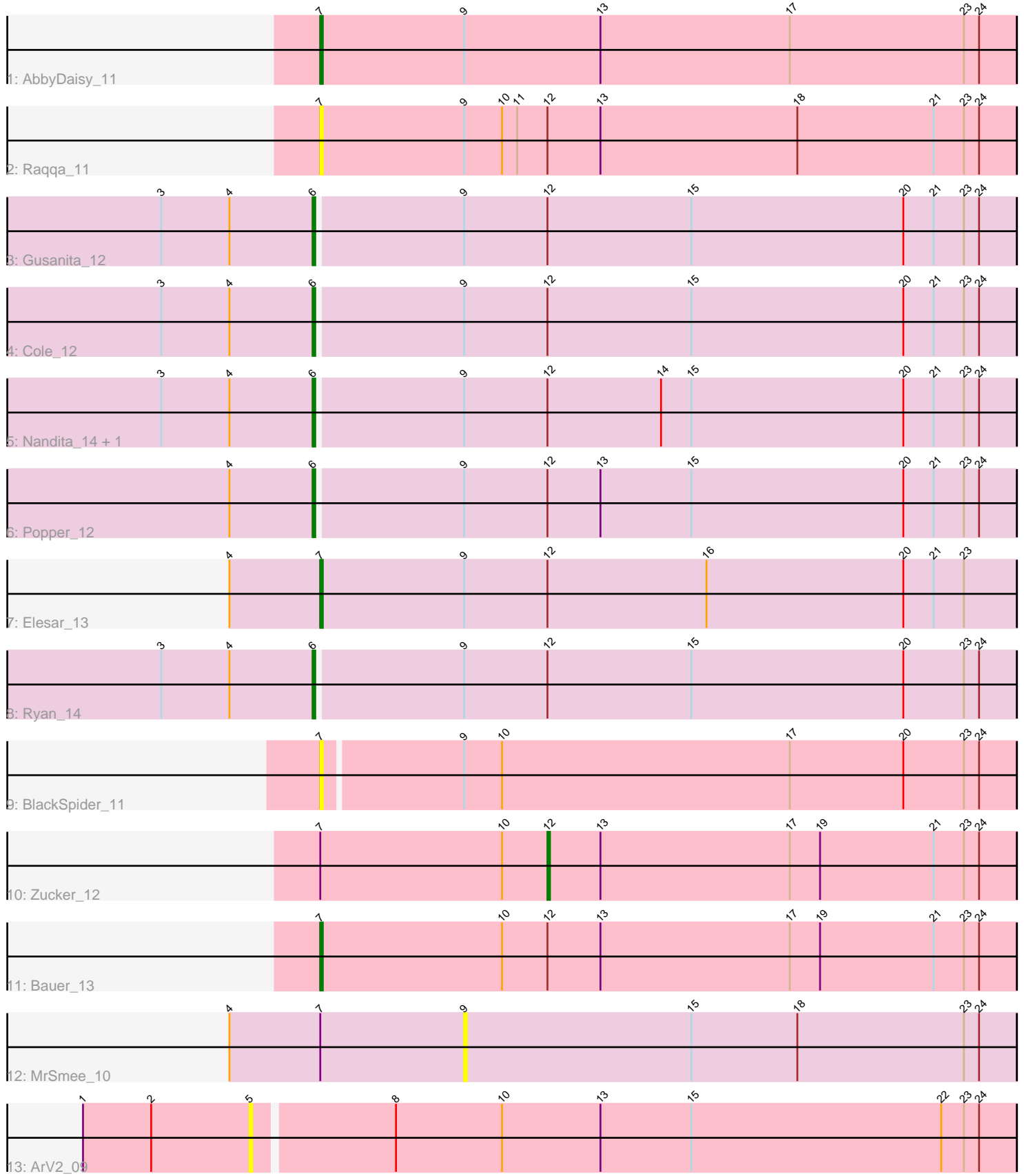


Pham 135954



Note: Tracks are now grouped by subcluster and scaled. Switching in subcluster is indicated by changes in track color. Track scale is now set by default to display the region 30 bp upstream of start 1 to 30 bp downstream of the last possible start. If this default region is judged to be packed too tightly with annotated starts, the track will be further scaled to only show that region of the ORF with annotated starts. This action will be indicated by adding "Zoomed" to the title. For starts, yellow indicates the location of called starts comprised solely of Glimmer/GeneMark auto-annotations, green indicates the location of called starts with at least 1 manual gene annotation.

Pham 135954 Report

This analysis was run 04/28/24 on database version 559.

Pham number 135954 has 14 members, 4 are drafts.

Phages represented in each track:

- Track 1 : AbbyDaisy_11
- Track 2 : Raqqa_11
- Track 3 : Gusanita_12
- Track 4 : Cole_12
- Track 5 : Nandita_14, Zaheer_14
- Track 6 : Popper_12
- Track 7 : Elesar_13
- Track 8 : Ryan_14
- Track 9 : BlackSpider_11
- Track 10 : Zucker_12
- Track 11 : Bauer_13
- Track 12 : MrSmee_10
- Track 13 : ArV2_09

Summary of Final Annotations (See graph section above for start numbers):

The start number called the most often in the published annotations is 6, it was called in 6 of the 10 non-draft genes in the pham.

Genes that call this "Most Annotated" start:

- Cole_12, Gusanita_12, Nandita_14, Popper_12, Ryan_14, Zaheer_14,

Genes that have the "Most Annotated" start but do not call it:

-

Genes that do not have the "Most Annotated" start:

- AbbyDaisy_11, ArV2_09, Bauer_13, BlackSpider_11, Elesar_13, MrSmee_10, Raqqa_11, Zucker_12,

Summary by start number:

Start 5:

- Found in 1 of 14 (7.1%) of genes in pham
- No Manual Annotations of this start.

- Called 100.0% of time when present
- Phage (with cluster) where this start called: ArV2_09 (singleton),

Start 6:

- Found in 6 of 14 (42.9%) of genes in pham
- Manual Annotations of this start: 6 of 10
- Called 100.0% of time when present
- Phage (with cluster) where this start called: Cole_12 (FF), Gusanita_12 (FF), Nandita_14 (FF), Popper_12 (FF), Ryan_14 (FF), Zaheer_14 (FF),

Start 7:

- Found in 7 of 14 (50.0%) of genes in pham
- Manual Annotations of this start: 3 of 10
- Called 71.4% of time when present
- Phage (with cluster) where this start called: AbbyDaisy_11 (AY), Bauer_13 (FN), BlackSpider_11 (FN), Elesar_13 (FF), Raqqa_11 (AY),

Start 9:

- Found in 11 of 14 (78.6%) of genes in pham
- No Manual Annotations of this start.
- Called 9.1% of time when present
- Phage (with cluster) where this start called: MrSmee_10 (UNK),

Start 12:

- Found in 10 of 14 (71.4%) of genes in pham
- Manual Annotations of this start: 1 of 10
- Called 10.0% of time when present
- Phage (with cluster) where this start called: Zucker_12 (FN),

Summary by clusters:

There are 5 clusters represented in this pham: AY, singleton, UNK, FN, FF,

Info for manual annotations of cluster AY:

- Start number 7 was manually annotated 1 time for cluster AY.

Info for manual annotations of cluster FF:

- Start number 6 was manually annotated 6 times for cluster FF.
- Start number 7 was manually annotated 1 time for cluster FF.

Info for manual annotations of cluster FN:

- Start number 7 was manually annotated 1 time for cluster FN.
- Start number 12 was manually annotated 1 time for cluster FN.

Gene Information:

Gene: AbbyDaisy_11 Start: 7126, Stop: 7401, Start Num: 7

Candidate Starts for AbbyDaisy_11:

(Start: 7 @7126 has 3 MA's), (9, 7183), (13, 7237), (17, 7312), (23, 7381), (24, 7387),

Gene: ArV2_09 Start: 6657, Stop: 6956, Start Num: 5

Candidate Starts for ArV2_09:

(1, 6591), (2, 6618), (5, 6657), (8, 6711), (10, 6753), (13, 6792), (15, 6828), (22, 6927), (23, 6936), (24, 6942),

Gene: Bauer_13 Start: 8502, Stop: 8777, Start Num: 7

Candidate Starts for Bauer_13:

(Start: 7 @8502 has 3 MA's), (10, 8574), (Start: 12 @8592 has 1 MA's), (13, 8613), (17, 8688), (19, 8700), (21, 8745), (23, 8757), (24, 8763),

Gene: BlackSpider_11 Start: 7532, Stop: 7804, Start Num: 7

Candidate Starts for BlackSpider_11:

(Start: 7 @7532 has 3 MA's), (9, 7586), (10, 7601), (17, 7715), (20, 7760), (23, 7784), (24, 7790),

Gene: Cole_12 Start: 8169, Stop: 8444, Start Num: 6

Candidate Starts for Cole_12:

(3, 8109), (4, 8136), (Start: 6 @8169 has 6 MA's), (9, 8226), (Start: 12 @8259 has 1 MA's), (15, 8316), (20, 8400), (21, 8412), (23, 8424), (24, 8430),

Gene: Elesar_13 Start: 8565, Stop: 8840, Start Num: 7

Candidate Starts for Elesar_13:

(4, 8529), (Start: 7 @8565 has 3 MA's), (9, 8622), (Start: 12 @8655 has 1 MA's), (16, 8718), (20, 8796), (21, 8808), (23, 8820),

Gene: Gusanita_12 Start: 8386, Stop: 8661, Start Num: 6

Candidate Starts for Gusanita_12:

(3, 8326), (4, 8353), (Start: 6 @8386 has 6 MA's), (9, 8443), (Start: 12 @8476 has 1 MA's), (15, 8533), (20, 8617), (21, 8629), (23, 8641), (24, 8647),

Gene: MrSmee_10 Start: 6345, Stop: 6563, Start Num: 9

Candidate Starts for MrSmee_10:

(4, 6252), (Start: 7 @6288 has 3 MA's), (9, 6345), (15, 6435), (18, 6477), (23, 6543), (24, 6549),

Gene: Nandita_14 Start: 8495, Stop: 8770, Start Num: 6

Candidate Starts for Nandita_14:

(3, 8435), (4, 8462), (Start: 6 @8495 has 6 MA's), (9, 8552), (Start: 12 @8585 has 1 MA's), (14, 8630), (15, 8642), (20, 8726), (21, 8738), (23, 8750), (24, 8756),

Gene: Popper_12 Start: 8026, Stop: 8301, Start Num: 6

Candidate Starts for Popper_12:

(4, 7993), (Start: 6 @8026 has 6 MA's), (9, 8083), (Start: 12 @8116 has 1 MA's), (13, 8137), (15, 8173), (20, 8257), (21, 8269), (23, 8281), (24, 8287),

Gene: Raqqa_11 Start: 7434, Stop: 7709, Start Num: 7

Candidate Starts for Raqqa_11:

(Start: 7 @7434 has 3 MA's), (9, 7491), (10, 7506), (11, 7512), (Start: 12 @7524 has 1 MA's), (13, 7545), (18, 7623), (21, 7677), (23, 7689), (24, 7695),

Gene: Ryan_14 Start: 8641, Stop: 8916, Start Num: 6

Candidate Starts for Ryan_14:

(3, 8581), (4, 8608), (Start: 6 @8641 has 6 MA's), (9, 8698), (Start: 12 @8731 has 1 MA's), (15, 8788), (20, 8872), (23, 8896), (24, 8902),

Gene: Zaheer_14 Start: 8730, Stop: 9005, Start Num: 6

Candidate Starts for Zaheer_14:

(3, 8670), (4, 8697), (Start: 6 @8730 has 6 MA's), (9, 8787), (Start: 12 @8820 has 1 MA's), (14, 8865), (15, 8877), (20, 8961), (21, 8973), (23, 8985), (24, 8991),

Gene: Zucker_12 Start: 7905, Stop: 8090, Start Num: 12

Candidate Starts for Zucker_12:

(Start: 7 @7815 has 3 MA's), (10, 7887), (Start: 12 @7905 has 1 MA's), (13, 7926), (17, 8001), (19, 8013), (21, 8058), (23, 8070), (24, 8076),