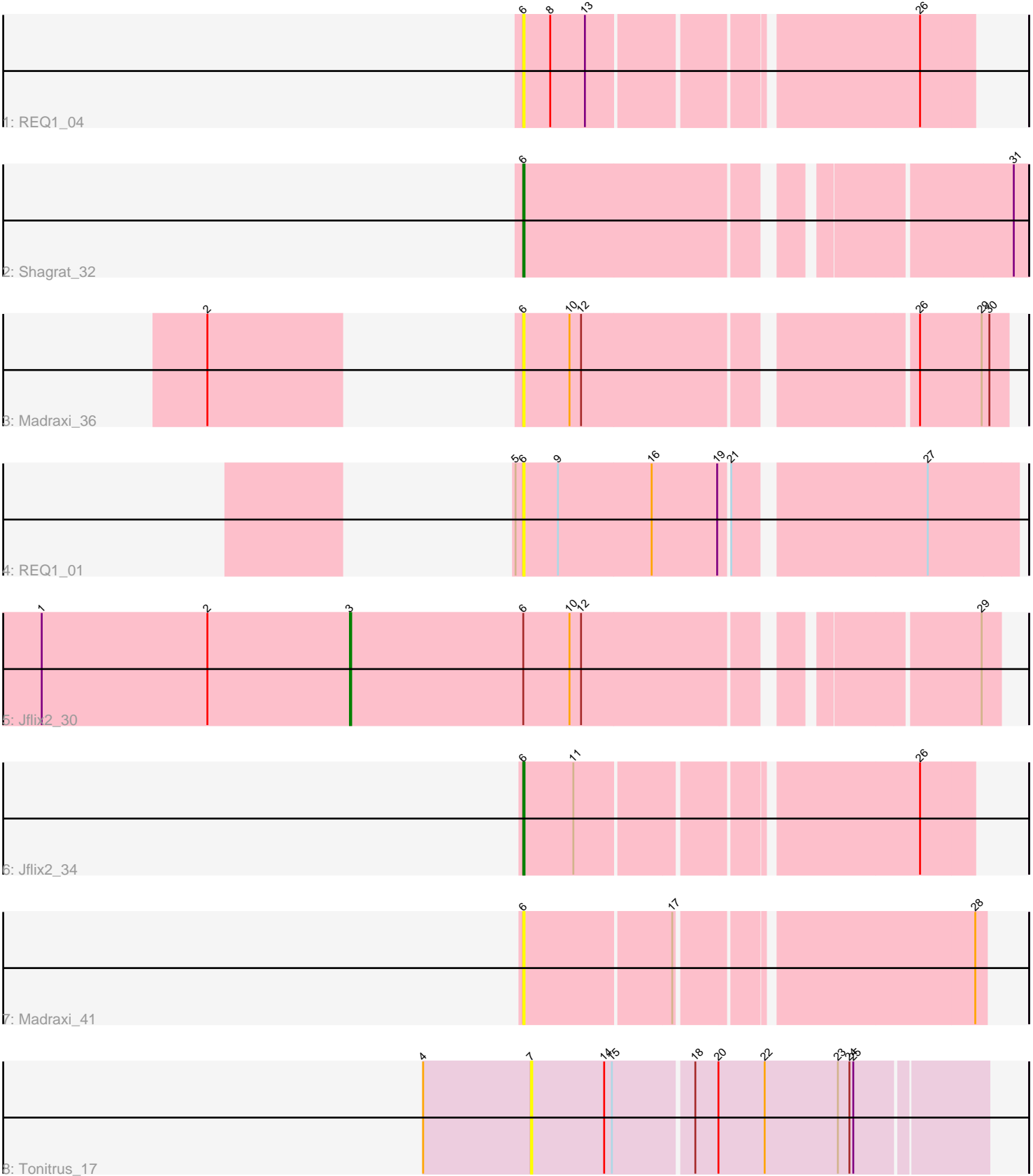


Pham 138466



Note: Tracks are now grouped by subcluster and scaled. Switching in subcluster is indicated by changes in track color. Track scale is now set by default to display the region 30 bp upstream of start 1 to 30 bp downstream of the last possible start. If this default region is judged to be packed too tightly with annotated starts, the track will be further scaled to only show that region of the ORF with annotated starts. This action will be indicated by adding "Zoomed" to the title. For starts, yellow indicates the location of called starts comprised solely of Glimmer/GeneMark auto-annotations, green indicates the location of called starts with at least 1 manual gene annotation.

## Pham 138466 Report

This analysis was run 04/28/24 on database version 559.

Pham number 138466 has 8 members, 5 are drafts.

Phages represented in each track:

- Track 1 : REQ1\_04
- Track 2 : Shagrat\_32
- Track 3 : Madraxi\_36
- Track 4 : REQ1\_01
- Track 5 : Jflix2\_30
- Track 6 : Jflix2\_34
- Track 7 : Madraxi\_41
- Track 8 : Tonitrus\_17

### ***Summary of Final Annotations (See graph section above for start numbers):***

The start number called the most often in the published annotations is 6, it was called in 2 of the 3 non-draft genes in the pham.

Genes that call this "Most Annotated" start:

- Jflix2\_34, Madraxi\_36, Madraxi\_41, REQ1\_01, REQ1\_04, Shagrat\_32,

Genes that have the "Most Annotated" start but do not call it:

- Jflix2\_30,

Genes that do not have the "Most Annotated" start:

- Tonitrus\_17,

### **Summary by start number:**

Start 3:

- Found in 1 of 8 ( 12.5% ) of genes in pham
- Manual Annotations of this start: 1 of 3
- Called 100.0% of time when present
- Phage (with cluster) where this start called: Jflix2\_30 (CF),

Start 6:

- Found in 7 of 8 ( 87.5% ) of genes in pham
- Manual Annotations of this start: 2 of 3

- Called 85.7% of time when present
- Phage (with cluster) where this start called: Jflix2\_34 (CF), Madraxi\_36 (CF), Madraxi\_41 (CF), REQ1\_01 (CF), REQ1\_04 (CF), Shagrat\_32 (CF),

Start 7:

- Found in 1 of 8 ( 12.5% ) of genes in pham
- No Manual Annotations of this start.
- Called 100.0% of time when present
- Phage (with cluster) where this start called: Tonitrus\_17 (singleton),

### **Summary by clusters:**

There are 2 clusters represented in this pham: singleton, CF,

Info for manual annotations of cluster CF:

- Start number 3 was manually annotated 1 time for cluster CF.
- Start number 6 was manually annotated 2 times for cluster CF.

### **Gene Information:**

Gene: Jflix2\_30 Start: 28314, Stop: 27847, Start Num: 3

Candidate Starts for Jflix2\_30:

(1, 28554), (2, 28425), (Start: 3 @28314 has 1 MA's), (Start: 6 @28179 has 2 MA's), (10, 28143), (12, 28134), (29, 27861),

Gene: Jflix2\_34 Start: 29473, Stop: 29150, Start Num: 6

Candidate Starts for Jflix2\_34:

(Start: 6 @29473 has 2 MA's), (11, 29434), (26, 29191),

Gene: Madraxi\_36 Start: 31277, Stop: 30927, Start Num: 6

Candidate Starts for Madraxi\_36:

(2, 31388), (Start: 6 @31277 has 2 MA's), (10, 31241), (12, 31232), (26, 30995), (29, 30947), (30, 30941),

Gene: Madraxi\_41 Start: 32668, Stop: 32336, Start Num: 6

Candidate Starts for Madraxi\_41:

(Start: 6 @32668 has 2 MA's), (17, 32557), (28, 32344),

Gene: REQ1\_04 Start: 1251, Stop: 928, Start Num: 6

Candidate Starts for REQ1\_04:

(Start: 6 @1251 has 2 MA's), (8, 1230), (13, 1203), (26, 969),

Gene: REQ1\_01 Start: 372, Stop: 10, Start Num: 6

Candidate Starts for REQ1\_01:

(5, 378), (Start: 6 @372 has 2 MA's), (9, 345), (16, 273), (19, 222), (21, 216), (27, 78),

Gene: Shagrat\_32 Start: 28577, Stop: 28224, Start Num: 6

Candidate Starts for Shagrat\_32:

(Start: 6 @28577 has 2 MA's), (31, 28235),

Gene: Tonitrus\_17 Start: 10011, Stop: 10355, Start Num: 7

Candidate Starts for Tonitrus\_17:

(4, 9927), (7, 10011), (14, 10068), (15, 10074), (18, 10134), (20, 10152), (22, 10188), (23, 10245), (24, 10254), (25, 10257),