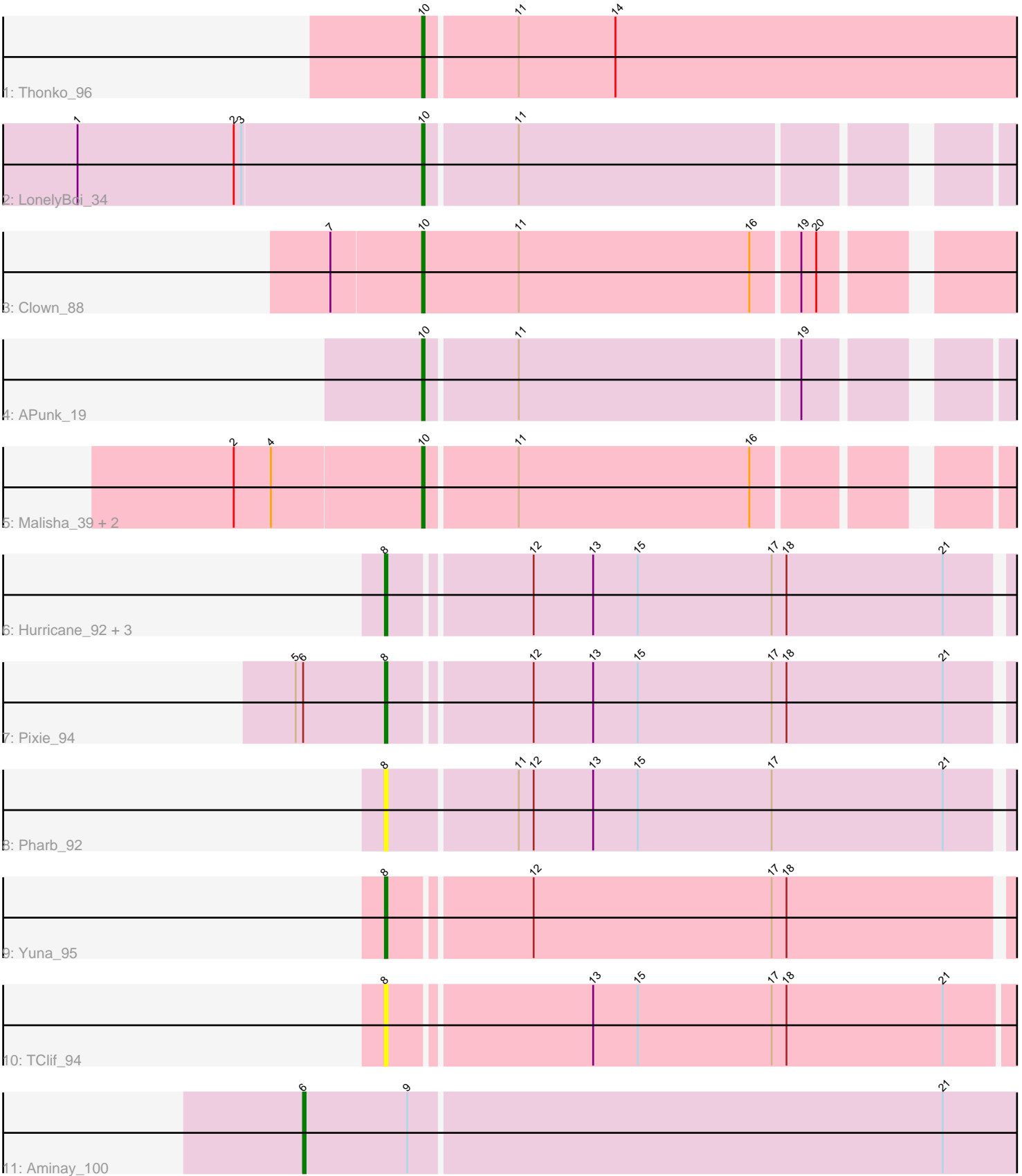


Pham 140126



Note: Tracks are now grouped by subcluster and scaled. Switching in subcluster is indicated by changes in track color. Track scale is now set by default to display the region 30 bp upstream of start 1 to 30 bp downstream of the last possible start. If this default region is judged to be packed too tightly with annotated starts, the track will be further scaled to only show that region of the ORF with annotated starts. This action will be indicated by adding "Zoomed" to the title. For starts, yellow indicates the location of called starts comprised solely of Glimmer/GeneMark auto-annotations, green indicates the location of called starts with at least 1 manual gene annotation.

Pham 140126 Report

This analysis was run 04/05/24 on database version 557.

Pham number 140126 has 16 members, 2 are drafts.

Phages represented in each track:

- Track 1 : Thonko_96
- Track 2 : LonelyBoi_34
- Track 3 : Clown_88
- Track 4 : APunk_19
- Track 5 : Malisha_39, Squiddly_39, Spooky_38
- Track 6 : Hurricane_92, Keshu_96, TBond007_91, ShedlockHolmes_95
- Track 7 : Pixie_94
- Track 8 : Pharb_92
- Track 9 : Yuna_95
- Track 10 : TClif_94
- Track 11 : Aminay_100

Summary of Final Annotations (See graph section above for start numbers):

The start number called the most often in the published annotations is 10, it was called in 7 of the 14 non-draft genes in the pham.

Genes that call this "Most Annotated" start:

- APunk_19, Clown_88, LonelyBoi_34, Malisha_39, Spooky_38, Squiddly_39, Thonko_96,

Genes that have the "Most Annotated" start but do not call it:

-

Genes that do not have the "Most Annotated" start:

- Aminay_100, Hurricane_92, Keshu_96, Pharb_92, Pixie_94, ShedlockHolmes_95, TBond007_91, TClif_94, Yuna_95,

Summary by start number:

Start 6:

- Found in 2 of 16 (12.5%) of genes in pham
- Manual Annotations of this start: 1 of 14
- Called 50.0% of time when present

- Phage (with cluster) where this start called: Aminay_100 (K7),

Start 8:

- Found in 8 of 16 (50.0%) of genes in pham
- Manual Annotations of this start: 6 of 14
- Called 100.0% of time when present
- Phage (with cluster) where this start called: Hurricane_92 (K3), Keshu_96 (K3), Pharb_92 (K3), Pixie_94 (K3), ShedlockHolmes_95 (K3), TBond007_91 (K3), TClif_94 (K6), Yuna_95 (K6),

Start 10:

- Found in 7 of 16 (43.8%) of genes in pham
- Manual Annotations of this start: 7 of 14
- Called 100.0% of time when present
- Phage (with cluster) where this start called: APunk_19 (DE4), Clown_88 (DC2), LonelyBoi_34 (CY), Malisha_39 (DN), Spooky_38 (DN2), Squiddly_39 (DN2), Thonko_96 (B8),

Summary by clusters:

There are 9 clusters represented in this pham: DN, B8, DE4, K3, CY, K7, K6, DN2, DC2,

Info for manual annotations of cluster B8:

- Start number 10 was manually annotated 1 time for cluster B8.

Info for manual annotations of cluster CY:

- Start number 10 was manually annotated 1 time for cluster CY.

Info for manual annotations of cluster DC2:

- Start number 10 was manually annotated 1 time for cluster DC2.

Info for manual annotations of cluster DE4:

- Start number 10 was manually annotated 1 time for cluster DE4.

Info for manual annotations of cluster DN:

- Start number 10 was manually annotated 1 time for cluster DN.

Info for manual annotations of cluster DN2:

- Start number 10 was manually annotated 2 times for cluster DN2.

Info for manual annotations of cluster K3:

- Start number 8 was manually annotated 5 times for cluster K3.

Info for manual annotations of cluster K6:

- Start number 8 was manually annotated 1 time for cluster K6.

Info for manual annotations of cluster K7:

- Start number 6 was manually annotated 1 time for cluster K7.

Gene Information:

Gene: APunk_19 Start: 12842, Stop: 13063, Start Num: 10

Candidate Starts for APunk_19:

(Start: 10 @12842 has 7 MA's), (11, 12878), (19, 12989),

Gene: Aminay_100 Start: 57900, Stop: 58190, Start Num: 6

Candidate Starts for Aminay_100:

(Start: 6 @57900 has 1 MA's), (9, 57942), (21, 58155),

Gene: Clown_88 Start: 55799, Stop: 55572, Start Num: 10

Candidate Starts for Clown_88:

(7, 55835), (Start: 10 @55799 has 7 MA's), (11, 55760), (16, 55667), (19, 55649), (20, 55643),

Gene: Hurricane_92 Start: 57925, Stop: 58173, Start Num: 8

Candidate Starts for Hurricane_92:

(Start: 8 @57925 has 6 MA's), (12, 57979), (13, 58003), (15, 58021), (17, 58075), (18, 58081), (21, 58144),

Gene: Keshu_96 Start: 58326, Stop: 58574, Start Num: 8

Candidate Starts for Keshu_96:

(Start: 8 @58326 has 6 MA's), (12, 58380), (13, 58404), (15, 58422), (17, 58476), (18, 58482), (21, 58545),

Gene: LonelyBoi_34 Start: 30609, Stop: 30388, Start Num: 10

Candidate Starts for LonelyBoi_34:

(1, 30747), (2, 30684), (3, 30681), (Start: 10 @30609 has 7 MA's), (11, 30573),

Gene: Malisha_39 Start: 29772, Stop: 29551, Start Num: 10

Candidate Starts for Malisha_39:

(2, 29847), (4, 29832), (Start: 10 @29772 has 7 MA's), (11, 29736), (16, 29643),

Gene: Pharb_92 Start: 57928, Stop: 58179, Start Num: 8

Candidate Starts for Pharb_92:

(Start: 8 @57928 has 6 MA's), (11, 57979), (12, 57985), (13, 58009), (15, 58027), (17, 58081), (21, 58150),

Gene: Pixie_94 Start: 58224, Stop: 58472, Start Num: 8

Candidate Starts for Pixie_94:

(5, 58188), (Start: 6 @58191 has 1 MA's), (Start: 8 @58224 has 6 MA's), (12, 58278), (13, 58302), (15, 58320), (17, 58374), (18, 58380), (21, 58443),

Gene: ShedlockHolmes_95 Start: 58157, Stop: 58405, Start Num: 8

Candidate Starts for ShedlockHolmes_95:

(Start: 8 @58157 has 6 MA's), (12, 58211), (13, 58235), (15, 58253), (17, 58307), (18, 58313), (21, 58376),

Gene: Spooky_38 Start: 29418, Stop: 29197, Start Num: 10

Candidate Starts for Spooky_38:

(2, 29493), (4, 29478), (Start: 10 @29418 has 7 MA's), (11, 29382), (16, 29289),

Gene: Squiddly_39 Start: 30802, Stop: 30581, Start Num: 10

Candidate Starts for Squiddly_39:

(2, 30877), (4, 30862), (Start: 10 @30802 has 7 MA's), (11, 30766), (16, 30673),

Gene: TBond007_91 Start: 58222, Stop: 58470, Start Num: 8

Candidate Starts for TBond007_91:

(Start: 8 @58222 has 6 MA's), (12, 58276), (13, 58300), (15, 58318), (17, 58372), (18, 58378), (21, 58441),

Gene: TClif_94 Start: 58564, Stop: 58815, Start Num: 8

Candidate Starts for TClif_94:

(Start: 8 @58564 has 6 MA's), (13, 58642), (15, 58660), (17, 58714), (18, 58720), (21, 58783),

Gene: Thonko_96 Start: 65857, Stop: 65615, Start Num: 10

Candidate Starts for Thonko_96:

(Start: 10 @65857 has 7 MA's), (11, 65821), (14, 65782),

Gene: Yuna_95 Start: 59550, Stop: 59798, Start Num: 8

Candidate Starts for Yuna_95:

(Start: 8 @59550 has 6 MA's), (12, 59604), (17, 59700), (18, 59706),