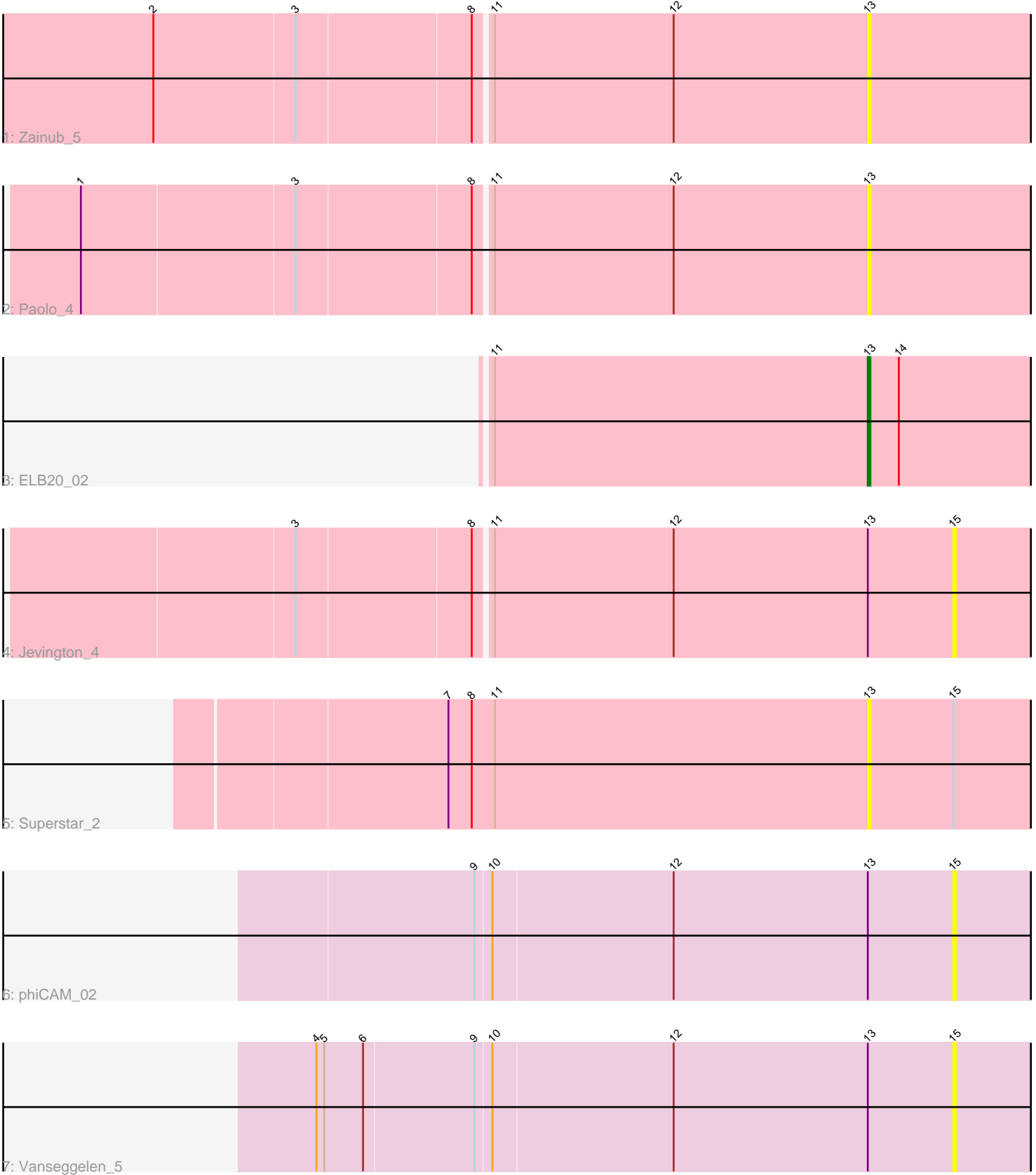


Pham 150976



Note: Tracks are now grouped by subcluster and scaled. Switching in subcluster is indicated by changes in track color. Track scale is now set by default to display the region 30 bp upstream of start 1 to 30 bp downstream of the last possible start. If this default region is judged to be packed too tightly with annotated starts, the track will be further scaled to only show that region of the ORF with annotated starts. This action will be indicated by adding "Zoomed" to the title. For starts, yellow indicates the location of called starts comprised solely of Glimmer/GeneMark auto-annotations, green indicates the location of called starts with at least 1 manual gene annotation.

Pham 150976 Report

This analysis was run 04/05/24 on database version 557.

Pham number 150976 has 7 members, 6 are drafts.

Phages represented in each track:

- Track 1 : Zainub_5
- Track 2 : Paolo_4
- Track 3 : ELB20_02
- Track 4 : Jevington_4
- Track 5 : Superstar_2
- Track 6 : phiCAM_02
- Track 7 : Vanseggelen_5

Summary of Final Annotations (See graph section above for start numbers):

The start number called the most often in the published annotations is 13, it was called in 1 of the 1 non-draft genes in the pham.

Genes that call this "Most Annotated" start:

- ELB20_02, Paolo_4, Superstar_2, Zainub_5,

Genes that have the "Most Annotated" start but do not call it:

- Jevington_4, Vanseggelen_5, phiCAM_02,

Genes that do not have the "Most Annotated" start:

-

Summary by start number:

Start 13:

- Found in 7 of 7 (100.0%) of genes in pham
- Manual Annotations of this start: 1 of 1
- Called 57.1% of time when present
- Phage (with cluster) where this start called: ELB20_02 (BD2), Paolo_4 (BD2), Superstar_2 (BD2), Zainub_5 (BD2),

Start 15:

- Found in 4 of 7 (57.1%) of genes in pham
- No Manual Annotations of this start.

- Called 75.0% of time when present
- Phage (with cluster) where this start called: Jevington_4 (BD2), Vanseggelen_5 (BD3), phiCAM_02 (BD3),

Summary by clusters:

There are 2 clusters represented in this pham: BD3, BD2,

Info for manual annotations of cluster BD2:

- Start number 13 was manually annotated 1 time for cluster BD2.

Gene Information:

Gene: ELB20_02 Start: 804, Stop: 974, Start Num: 13

Candidate Starts for ELB20_02:

(11, 660), (Start: 13 @804 has 1 MA's), (14, 816),

Gene: Jevington_4 Start: 1212, Stop: 1349, Start Num: 15

Candidate Starts for Jevington_4:

(3, 963), (8, 1029), (11, 1035), (12, 1104), (Start: 13 @1179 has 1 MA's), (15, 1212),

Gene: Paolo_4 Start: 1178, Stop: 1348, Start Num: 13

Candidate Starts for Paolo_4:

(1, 881), (3, 962), (8, 1028), (11, 1034), (12, 1103), (Start: 13 @1178 has 1 MA's),

Gene: Superstar_2 Start: 802, Stop: 972, Start Num: 13

Candidate Starts for Superstar_2:

(7, 640), (8, 649), (11, 658), (Start: 13 @802 has 1 MA's), (15, 835),

Gene: Vanseggelen_5 Start: 1149, Stop: 1286, Start Num: 15

Candidate Starts for Vanseggelen_5:

(4, 906), (5, 909), (6, 924), (9, 966), (10, 972), (12, 1041), (Start: 13 @1116 has 1 MA's), (15, 1149),

Gene: Zainub_5 Start: 1181, Stop: 1351, Start Num: 13

Candidate Starts for Zainub_5:

(2, 911), (3, 965), (8, 1031), (11, 1037), (12, 1106), (Start: 13 @1181 has 1 MA's),

Gene: phiCAM_02 Start: 1171, Stop: 1308, Start Num: 15

Candidate Starts for phiCAM_02:

(9, 988), (10, 994), (12, 1063), (Start: 13 @1138 has 1 MA's), (15, 1171),