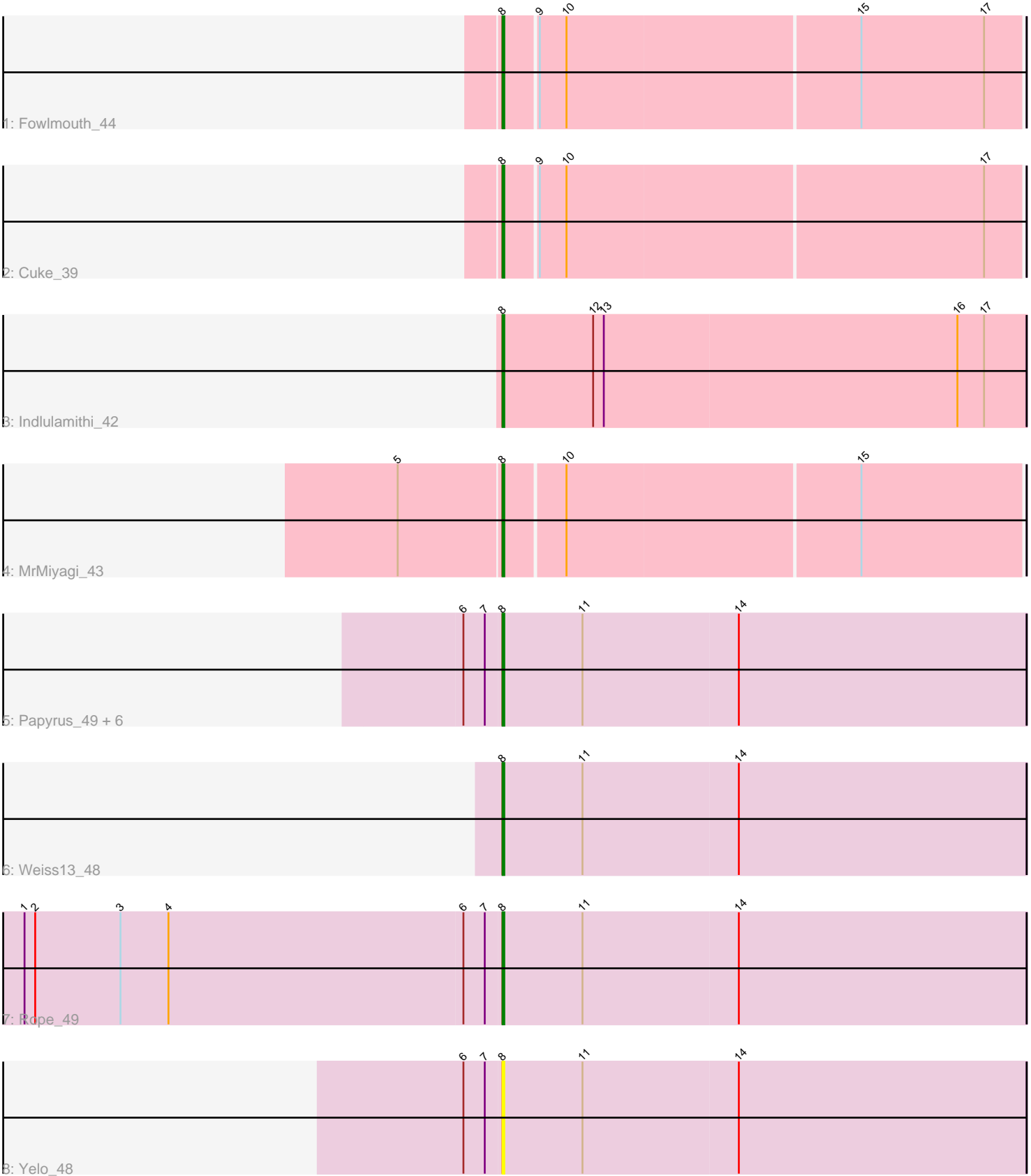


Pham 152299



Note: Tracks are now grouped by subcluster and scaled. Switching in subcluster is indicated by changes in track color. Track scale is now set by default to display the region 30 bp upstream of start 1 to 30 bp downstream of the last possible start. If this default region is judged to be packed too tightly with annotated starts, the track will be further scaled to only show that region of the ORF with annotated starts. This action will be indicated by adding "Zoomed" to the title. For starts, yellow indicates the location of called starts comprised solely of Glimmer/GeneMark auto-annotations, green indicates the location of called starts with at least 1 manual gene annotation.

Pham 152299 Report

This analysis was run 04/28/24 on database version 559.

Pham number 152299 has 14 members, 2 are drafts.

Phages represented in each track:

- Track 1 : Fowlmouth_44
- Track 2 : Cuke_39
- Track 3 : Indlulamithi_42
- Track 4 : MrMiyagi_43
- Track 5 : Papyrus_49, MontyDev_49, Send513_49, Nilo_50, Zenon_49, Candle_48, Riparian_49
- Track 6 : Weiss13_48
- Track 7 : Rope_49
- Track 8 : Yelo_48

Summary of Final Annotations (See graph section above for start numbers):

The start number called the most often in the published annotations is 8, it was called in 12 of the 12 non-draft genes in the pham.

Genes that call this "Most Annotated" start:

- Candle_48, Cuke_39, Fowlmouth_44, Indlulamithi_42, MontyDev_49, MrMiyagi_43, Nilo_50, Papyrus_49, Riparian_49, Rope_49, Send513_49, Weiss13_48, Yelo_48, Zenon_49,

Genes that have the "Most Annotated" start but do not call it:

-

Genes that do not have the "Most Annotated" start:

-

Summary by start number:

Start 8:

- Found in 14 of 14 (100.0%) of genes in pham
- Manual Annotations of this start: 12 of 12
- Called 100.0% of time when present
- Phage (with cluster) where this start called: Candle_48 (R), Cuke_39 (AC), Fowlmouth_44 (AC), Indlulamithi_42 (AC), MontyDev_49 (R), MrMiyagi_43 (AC),

Nilo_50 (R), Papyrus_49 (R), Riparian_49 (R), Rope_49 (R), Send513_49 (R), Weiss13_48 (R), Yelo_48 (R), Zenon_49 (R),

Summary by clusters:

There are 2 clusters represented in this pham: AC, R,

Info for manual annotations of cluster AC:

- Start number 8 was manually annotated 4 times for cluster AC.

Info for manual annotations of cluster R:

- Start number 8 was manually annotated 8 times for cluster R.

Gene Information:

Gene: Candle_48 Start: 39582, Stop: 39875, Start Num: 8

Candidate Starts for Candle_48:

(6, 39561), (7, 39573), (Start: 8 @39582 has 12 MA's), (11, 39627), (14, 39714),

Gene: Cuke_39 Start: 31170, Stop: 31454, Start Num: 8

Candidate Starts for Cuke_39:

(Start: 8 @31170 has 12 MA's), (9, 31188), (10, 31203), (17, 31434),

Gene: Fowlmouth_44 Start: 35072, Stop: 35356, Start Num: 8

Candidate Starts for Fowlmouth_44:

(Start: 8 @35072 has 12 MA's), (9, 35090), (10, 35105), (15, 35267), (17, 35336),

Gene: Indlulamithi_42 Start: 35402, Stop: 35695, Start Num: 8

Candidate Starts for Indlulamithi_42:

(Start: 8 @35402 has 12 MA's), (12, 35453), (13, 35459), (16, 35657), (17, 35672),

Gene: MontyDev_49 Start: 39229, Stop: 39522, Start Num: 8

Candidate Starts for MontyDev_49:

(6, 39208), (7, 39220), (Start: 8 @39229 has 12 MA's), (11, 39274), (14, 39361),

Gene: MrMiyagi_43 Start: 35457, Stop: 35741, Start Num: 8

Candidate Starts for MrMiyagi_43:

(5, 35400), (Start: 8 @35457 has 12 MA's), (10, 35490), (15, 35652),

Gene: Nilo_50 Start: 39606, Stop: 39899, Start Num: 8

Candidate Starts for Nilo_50:

(6, 39585), (7, 39597), (Start: 8 @39606 has 12 MA's), (11, 39651), (14, 39738),

Gene: Papyrus_49 Start: 39438, Stop: 39731, Start Num: 8

Candidate Starts for Papyrus_49:

(6, 39417), (7, 39429), (Start: 8 @39438 has 12 MA's), (11, 39483), (14, 39570),

Gene: Riparian_49 Start: 39028, Stop: 39321, Start Num: 8

Candidate Starts for Riparian_49:

(6, 39007), (7, 39019), (Start: 8 @39028 has 12 MA's), (11, 39073), (14, 39160),

Gene: Rope_49 Start: 39426, Stop: 39719, Start Num: 8

Candidate Starts for Rope_49:

(1, 39159), (2, 39165), (3, 39213), (4, 39240), (6, 39405), (7, 39417), (Start: 8 @39426 has 12 MA's),
(11, 39471), (14, 39558),

Gene: Send513_49 Start: 39565, Stop: 39858, Start Num: 8

Candidate Starts for Send513_49:

(6, 39544), (7, 39556), (Start: 8 @39565 has 12 MA's), (11, 39610), (14, 39697),

Gene: Weiss13_48 Start: 39261, Stop: 39554, Start Num: 8

Candidate Starts for Weiss13_48:

(Start: 8 @39261 has 12 MA's), (11, 39306), (14, 39393),

Gene: Yelo_48 Start: 39642, Stop: 39935, Start Num: 8

Candidate Starts for Yelo_48:

(6, 39621), (7, 39633), (Start: 8 @39642 has 12 MA's), (11, 39687), (14, 39774),

Gene: Zenon_49 Start: 39590, Stop: 39883, Start Num: 8

Candidate Starts for Zenon_49:

(6, 39569), (7, 39581), (Start: 8 @39590 has 12 MA's), (11, 39635), (14, 39722),