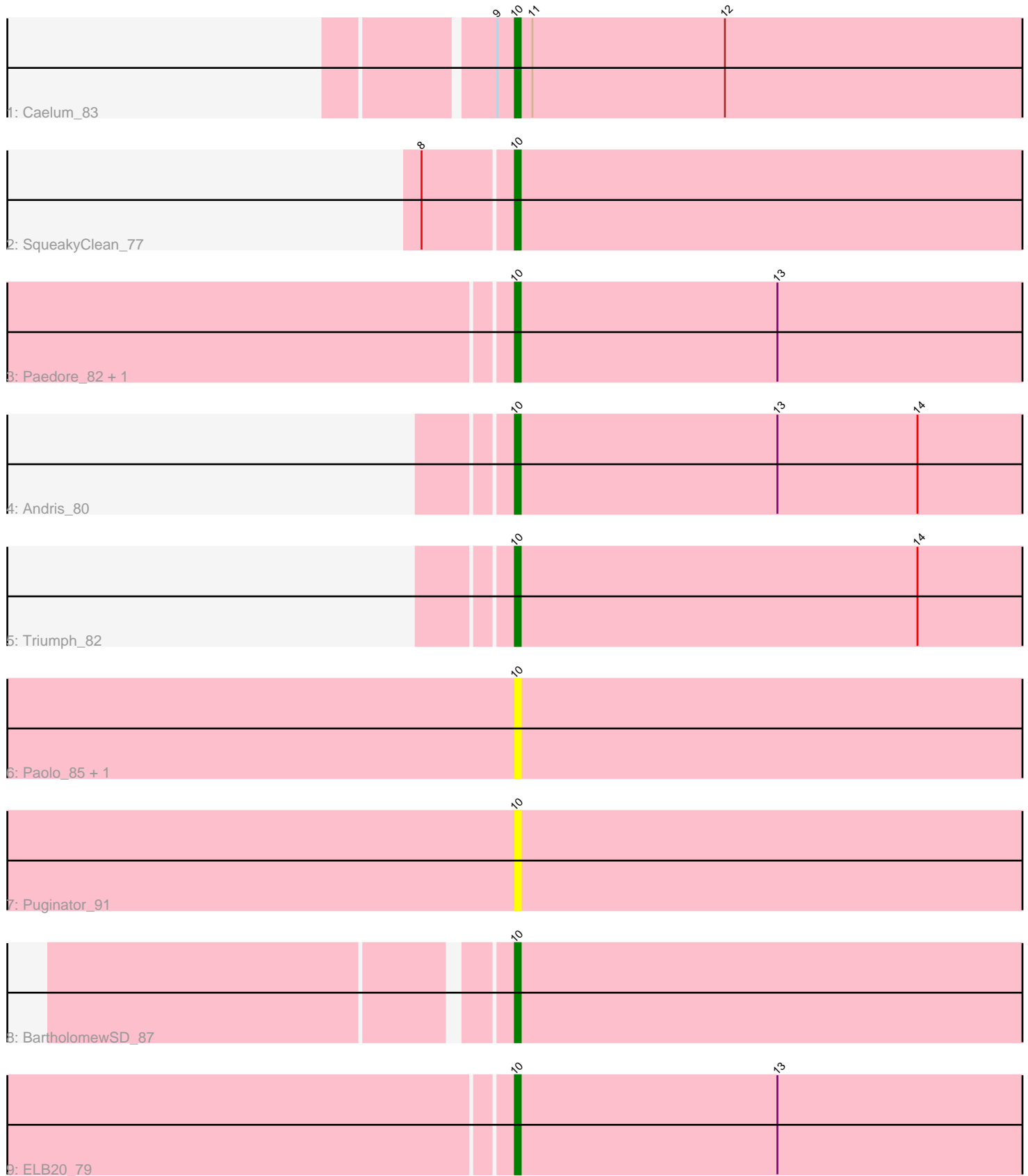


## Zoomed Pham 153713



Note: Tracks are now grouped by subcluster and scaled. Switching in subcluster is indicated by changes in track color. Track scale is now set by default to display the region 30 bp upstream of start 1 to 30 bp downstream of the last possible start. If this default region is judged to be packed too tightly with annotated starts, the track will be further scaled to only show that region of the ORF with annotated starts. This action will be indicated by adding "Zoomed" to the title. For starts, yellow indicates the location of called starts comprised solely of Glimmer/GeneMark auto-annotations, green indicates the location of called starts with at least 1 manual gene annotation.

## Pham 153713 Report

This analysis was run 04/05/24 on database version 557.

Pham number 153713 has 11 members, 4 are drafts.

Phages represented in each track:

- Track 1 : Caelum\_83
- Track 2 : SqueakyClean\_77
- Track 3 : Paedore\_82, Loofah\_85
- Track 4 : Andris\_80
- Track 5 : Triumph\_82
- Track 6 : Paolo\_85, Zainub\_89
- Track 7 : Puginator\_91
- Track 8 : BartholomewSD\_87
- Track 9 : ELB20\_79

### ***Summary of Final Annotations (See graph section above for start numbers):***

The start number called the most often in the published annotations is 10, it was called in 7 of the 7 non-draft genes in the pham.

Genes that call this "Most Annotated" start:

- Andris\_80, BartholomewSD\_87, Caelum\_83, ELB20\_79, Loofah\_85, Paedore\_82, Paolo\_85, Puginator\_91, SqueakyClean\_77, Triumph\_82, Zainub\_89,

Genes that have the "Most Annotated" start but do not call it:

- 

Genes that do not have the "Most Annotated" start:

- 

### **Summary by start number:**

Start 10:

- Found in 11 of 11 ( 100.0% ) of genes in pham
- Manual Annotations of this start: 7 of 7
- Called 100.0% of time when present
- Phage (with cluster) where this start called: Andris\_80 (BD2), BartholomewSD\_87 (BD2), Caelum\_83 (BD2), ELB20\_79 (BD2), Loofah\_85 (BD2), Paedore\_82 (BD2), Paolo\_85 (BD2), Puginator\_91 (BD2), SqueakyClean\_77 (BD2), Triumph\_82 (BD2),

Zainub\_89 (BD2),

### **Summary by clusters:**

There is one cluster represented in this pham: BD2

Info for manual annotations of cluster BD2:

- Start number 10 was manually annotated 7 times for cluster BD2.

### **Gene Information:**

Gene: Andris\_80 Start: 48874, Stop: 48698, Start Num: 10

Candidate Starts for Andris\_80:

(Start: 10 @48874 has 7 MA's), (13, 48829), (14, 48805), (22, 48712),

Gene: BartholomewSD\_87 Start: 50496, Stop: 50320, Start Num: 10

Candidate Starts for BartholomewSD\_87:

(3, 50595), (Start: 10 @50496 has 7 MA's), (17, 50382), (22, 50334),

Gene: Caelum\_83 Start: 48893, Stop: 48711, Start Num: 10

Candidate Starts for Caelum\_83:

(9, 48896), (Start: 10 @48893 has 7 MA's), (11, 48890), (12, 48857), (18, 48776),

Gene: ELB20\_79 Start: 49457, Stop: 49281, Start Num: 10

Candidate Starts for ELB20\_79:

(4, 49571), (7, 49553), (Start: 10 @49457 has 7 MA's), (13, 49412), (22, 49295),

Gene: Loofah\_85 Start: 50694, Stop: 50506, Start Num: 10

Candidate Starts for Loofah\_85:

(Start: 10 @50694 has 7 MA's), (13, 50649), (21, 50541), (23, 50517), (24, 50511),

Gene: Paedore\_82 Start: 50863, Stop: 50675, Start Num: 10

Candidate Starts for Paedore\_82:

(Start: 10 @50863 has 7 MA's), (13, 50818), (21, 50710), (23, 50686), (24, 50680),

Gene: Paolo\_85 Start: 49702, Stop: 49526, Start Num: 10

Candidate Starts for Paolo\_85:

(2, 49858), (5, 49816), (6, 49807), (Start: 10 @49702 has 7 MA's), (16, 49600), (17, 49588), (22, 49540),

Gene: Puginator\_91 Start: 49772, Stop: 49596, Start Num: 10

Candidate Starts for Puginator\_91:

(1, 49937), (2, 49928), (5, 49886), (Start: 10 @49772 has 7 MA's), (17, 49658), (22, 49610),

Gene: SqueakyClean\_77 Start: 49262, Stop: 49101, Start Num: 10

Candidate Starts for SqueakyClean\_77:

(8, 49277), (Start: 10 @49262 has 7 MA's), (15, 49163), (19, 49139),

Gene: Triumph\_82 Start: 49644, Stop: 49468, Start Num: 10

Candidate Starts for Triumph\_82:

(Start: 10 @49644 has 7 MA's), (14, 49575), (20, 49512), (22, 49482),

Gene: Zainub\_89 Start: 49882, Stop: 49706, Start Num: 10

Candidate Starts for Zainub\_89:

(2, 50038), (5, 49996), (6, 49987), (Start: 10 @49882 has 7 MA's), (16, 49780), (17, 49768), (22, 49720),