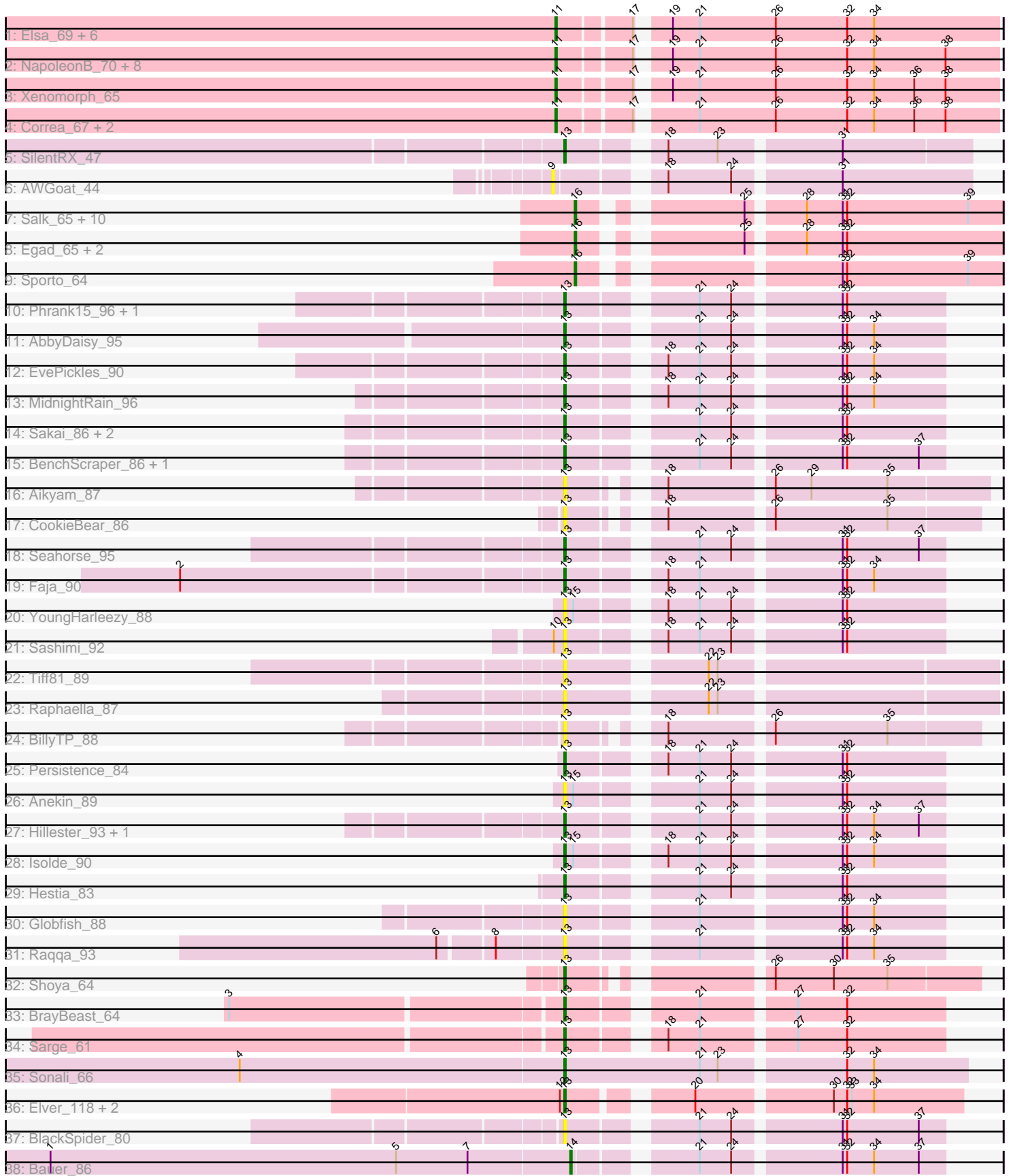


Pham 154606



Note: Tracks are now grouped by subcluster and scaled. Switching in subcluster is indicated by changes in track color. Track scale is now set by default to display the region 30 bp upstream of start 1 to 30 bp downstream of the last possible start. If this default region is judged to be packed too tightly with annotated starts, the track will be further scaled to only show that region of the ORF with annotated starts. This action will be indicated by adding "Zoomed" to the title. For starts, yellow indicates the location of called starts comprised solely of Glimmer/GeneMark auto-annotations, green indicates the location of called starts with at least 1 manual gene annotation.

Pham 154606 Report

This analysis was run 04/12/24 on database version 558.

Pham number 154606 has 73 members, 21 are drafts.

Phages represented in each track:

- Track 1 : Elsa_69, Arcadia_69, GoCrazy_66, Mooshroom_69, Nason_69, KeaneyLin_65, Kardesai_69
- Track 2 : NapoleonB_70, Circum_70, Benllo_69, JEGGS_68, Dynamite_69, Mudcat_65, Hankly_68, BenitoAntonio_67, Heisenberger_68
- Track 3 : Xenomorph_65
- Track 4 : Correa_67, Cheesy_69, Tribby_72
- Track 5 : SilentRX_47
- Track 6 : AWGoat_44
- Track 7 : Salk_65, Sloopyjoe_65, Stayer_65, Linda_65, BronxBay_65, StarLord_65, Michelle_65, Shiba_64, MrAaronian_65, DoctorPepper_65, Djungelskog_64
- Track 8 : Egad_65, Raunak_66, ProfFrink_66
- Track 9 : Sporto_64
- Track 10 : Phrank15_96, Zucker_89
- Track 11 : AbbyDaisy_95
- Track 12 : EvePickles_90
- Track 13 : MidnightRain_96
- Track 14 : Sakai_86, Auxilium_87, Gorpy_87
- Track 15 : BenchScraper_86, Richie_92
- Track 16 : Aikyam_87
- Track 17 : CookieBear_86
- Track 18 : Seahorse_95
- Track 19 : Faja_90
- Track 20 : YoungHarleezy_88
- Track 21 : Sashimi_92
- Track 22 : Tiff81_89
- Track 23 : Raphaella_87
- Track 24 : BillyTP_88
- Track 25 : Persistence_84
- Track 26 : Anekin_89
- Track 27 : Hillester_93, RadFad_94
- Track 28 : Isolde_90
- Track 29 : Hestia_83
- Track 30 : Globfish_88
- Track 31 : Raqqa_93
- Track 32 : Shoya_64
- Track 33 : BrayBeast_64
- Track 34 : Sarge_61

- Track 35 : Sonali_66
- Track 36 : Elver_118, Paella_119, Qui_119
- Track 37 : BlackSpider_80
- Track 38 : Bauer_86

Summary of Final Annotations (See graph section above for start numbers):

The start number called the most often in the published annotations is 13, it was called in 21 of the 52 non-draft genes in the pham.

Genes that call this "Most Annotated" start:

- AbbyDaisy_95, Aikyam_87, Anekin_89, Auxilium_87, BenchScraper_86, BillyTP_88, BlackSpider_80, BrayBeast_64, CookieBear_86, Elver_118, EvePickles_90, Faja_90, Globfish_88, Gorpy_87, Hestia_83, Hillester_93, Isolde_90, MidnightRain_96, Paella_119, Persistence_84, Phrank15_96, Qui_119, RadFad_94, Raphaella_87, Raqqa_93, Richie_92, Sakai_86, Sarge_61, Sashimi_92, Seahorse_95, Shoya_64, SilentRX_47, Sonali_66, Tiff81_89, YoungHarleezy_88, Zucker_89,

Genes that have the "Most Annotated" start but do not call it:

-

Genes that do not have the "Most Annotated" start:

- AWGoat_44, Arcadia_69, Bauer_86, BenitoAntonio_67, Benllo_69, BronxBay_65, Cheesy_69, Circum_70, Correa_67, Djungelskog_64, DoctorPepper_65, Dynamite_69, Egad_65, Elsa_69, GoCrazy_66, Hankly_68, Heisenberger_68, JEGGS_68, Kardesai_69, KeaneyLin_65, Linda_65, Michelle_65, Mooshroom_69, MrAaronian_65, Mudcat_65, NapoleonB_70, Nason_69, ProfFrink_66, Raunak_66, Salk_65, Shiba_64, Sloopyjoe_65, Sporto_64, StarLord_65, Stayer_65, Tribby_72, Xenomorph_65,

Summary by start number:

Start 9:

- Found in 1 of 73 (1.4%) of genes in pham
- No Manual Annotations of this start.
- Called 100.0% of time when present
- Phage (with cluster) where this start called: AWGoat_44 (AP4),

Start 11:

- Found in 20 of 73 (27.4%) of genes in pham
- Manual Annotations of this start: 18 of 52
- Called 100.0% of time when present
- Phage (with cluster) where this start called: Arcadia_69 (AM), BenitoAntonio_67 (AM), Benllo_69 (AM), Cheesy_69 (AM), Circum_70 (AM), Correa_67 (AM), Dynamite_69 (AM), Elsa_69 (AM), GoCrazy_66 (AM), Hankly_68 (AM), Heisenberger_68 (AM), JEGGS_68 (AM), Kardesai_69 (AM), KeaneyLin_65 (AM), Mooshroom_69 (AM), Mudcat_65 (AM), NapoleonB_70 (AM), Nason_69 (AM), Tribby_72 (AM), Xenomorph_65 (AM),

Start 13:

- Found in 36 of 73 (49.3%) of genes in pham
- Manual Annotations of this start: 21 of 52
- Called 100.0% of time when present
- Phage (with cluster) where this start called: AbbyDaisy_95 (AY), Aikyam_87 (AY), Anekin_89 (AY), Auxilium_87 (AY), BenchScraper_86 (AY), BillyTP_88 (AY), BlackSpider_80 (FN), BrayBeast_64 (FB), CookieBear_86 (AY), Elver_118 (FK), EvePickles_90 (AY), Faja_90 (AY), Globfish_88 (AY), Gorpy_87 (AY), Hestia_83 (AY), Hillester_93 (AY), Isolde_90 (AY), MidnightRain_96 (AY), Paella_119 (FK), Persistence_84 (AY), Phrank15_96 (AY), Qui_119 (FK), RadFad_94 (AY), Raphaella_87 (AY), Raqqa_93 (AY), Richie_92 (AY), Sakai_86 (AY), Sarge_61 (FB), Sashimi_92 (AY), Seahorse_95 (AY), Shoya_64 (FB), SilentRX_47 (AP4), Sonali_66 (FG), Tiff81_89 (AY), YoungHarleezy_88 (AY), Zucker_89 (FN),

Start 14:

- Found in 1 of 73 (1.4%) of genes in pham
- Manual Annotations of this start: 1 of 52
- Called 100.0% of time when present
- Phage (with cluster) where this start called: Bauer_86 (FN),

Start 16:

- Found in 15 of 73 (20.5%) of genes in pham
- Manual Annotations of this start: 12 of 52
- Called 100.0% of time when present
- Phage (with cluster) where this start called: BronxBay_65 (AW), Djungelskog_64 (AW), DoctorPepper_65 (AW), Egad_65 (AW), Linda_65 (AW), Michelle_65 (AW), MrAaronian_65 (AW), ProfFrink_66 (AW), Raunak_66 (AW), Salk_65 (AW), Shiba_64 (AW), Sloopyjoe_65 (AW), Sporto_64 (AW), StarLord_65 (AW), Stayer_65 (AW),

Summary by clusters:

There are 8 clusters represented in this pham: AM, AP4, FB, AW, FG, AY, FK, FN,

Info for manual annotations of cluster AM:

- Start number 11 was manually annotated 18 times for cluster AM.

Info for manual annotations of cluster AP4:

- Start number 13 was manually annotated 1 time for cluster AP4.

Info for manual annotations of cluster AW:

- Start number 16 was manually annotated 12 times for cluster AW.

Info for manual annotations of cluster AY:

- Start number 13 was manually annotated 13 times for cluster AY.

Info for manual annotations of cluster FB:

- Start number 13 was manually annotated 3 times for cluster FB.

Info for manual annotations of cluster FG:

- Start number 13 was manually annotated 1 time for cluster FG.

Info for manual annotations of cluster FK:

- Start number 13 was manually annotated 2 times for cluster FK.

Info for manual annotations of cluster FN:

- Start number 13 was manually annotated 1 time for cluster FN.
- Start number 14 was manually annotated 1 time for cluster FN.

Gene Information:

Gene: AWGoat_44 Start: 36435, Stop: 36184, Start Num: 9

Candidate Starts for AWGoat_44:

(9, 36435), (18, 36378), (24, 36336), (31, 36270),

Gene: AbbyDaisy_95 Start: 52716, Stop: 52943, Start Num: 13

Candidate Starts for AbbyDaisy_95:

(Start: 13 @52716 has 21 MA's), (21, 52788), (24, 52809), (31, 52875), (32, 52878), (34, 52896),

Gene: Aikyam_87 Start: 47697, Stop: 47942, Start Num: 13

Candidate Starts for Aikyam_87:

(Start: 13 @47697 has 21 MA's), (18, 47739), (26, 47802), (29, 47826), (35, 47877),

Gene: Anekin_89 Start: 49928, Stop: 50155, Start Num: 13

Candidate Starts for Anekin_89:

(Start: 13 @49928 has 21 MA's), (15, 49934), (21, 50000), (24, 50021), (31, 50087), (32, 50090),

Gene: Arcadia_69 Start: 43472, Stop: 43750, Start Num: 11

Candidate Starts for Arcadia_69:

(Start: 11 @43472 has 18 MA's), (17, 43517), (19, 43532), (21, 43550), (26, 43601), (32, 43649), (34, 43667),

Gene: Auxilium_87 Start: 46996, Stop: 47223, Start Num: 13

Candidate Starts for Auxilium_87:

(Start: 13 @46996 has 21 MA's), (21, 47068), (24, 47089), (31, 47155), (32, 47158),

Gene: Bauer_86 Start: 46271, Stop: 46492, Start Num: 14

Candidate Starts for Bauer_86:

(1, 45926), (5, 46157), (7, 46205), (Start: 14 @46271 has 1 MA's), (21, 46337), (24, 46358), (31, 46424), (32, 46427), (34, 46445), (37, 46475),

Gene: BenchScraper_86 Start: 47947, Stop: 48174, Start Num: 13

Candidate Starts for BenchScraper_86:

(Start: 13 @47947 has 21 MA's), (21, 48019), (24, 48040), (31, 48106), (32, 48109), (37, 48157),

Gene: BenitoAntonio_67 Start: 42507, Stop: 42785, Start Num: 11

Candidate Starts for BenitoAntonio_67:

(Start: 11 @42507 has 18 MA's), (17, 42552), (19, 42567), (21, 42585), (26, 42636), (32, 42684), (34, 42702), (38, 42750),

Gene: Benllo_69 Start: 43185, Stop: 43463, Start Num: 11

Candidate Starts for Benllo_69:

(Start: 11 @43185 has 18 MA's), (17, 43230), (19, 43245), (21, 43263), (26, 43314), (32, 43362), (34, 43380), (38, 43428),

Gene: BillyTP_88 Start: 50050, Stop: 50289, Start Num: 13
Candidate Starts for BillyTP_88:
(Start: 13 @50050 has 21 MA's), (18, 50092), (26, 50155), (35, 50230),

Gene: BlackSpider_80 Start: 47304, Stop: 47531, Start Num: 13
Candidate Starts for BlackSpider_80:
(Start: 13 @47304 has 21 MA's), (21, 47376), (24, 47397), (31, 47463), (32, 47466), (37, 47514),

Gene: BrayBeast_64 Start: 36058, Stop: 36285, Start Num: 13
Candidate Starts for BrayBeast_64:
(3, 35845), (Start: 13 @36058 has 21 MA's), (21, 36130), (27, 36187), (32, 36220),

Gene: BronxBay_65 Start: 42499, Stop: 42750, Start Num: 16
Candidate Starts for BronxBay_65:
(Start: 16 @42499 has 12 MA's), (25, 42586), (28, 42619), (31, 42643), (32, 42646), (39, 42727),

Gene: Cheesy_69 Start: 42699, Stop: 42977, Start Num: 11
Candidate Starts for Cheesy_69:
(Start: 11 @42699 has 18 MA's), (17, 42744), (21, 42777), (26, 42828), (32, 42876), (34, 42894), (36, 42921), (38, 42942),

Gene: Circum_70 Start: 43275, Stop: 43553, Start Num: 11
Candidate Starts for Circum_70:
(Start: 11 @43275 has 18 MA's), (17, 43320), (19, 43335), (21, 43353), (26, 43404), (32, 43452), (34, 43470), (38, 43518),

Gene: CookieBear_86 Start: 49258, Stop: 49497, Start Num: 13
Candidate Starts for CookieBear_86:
(Start: 13 @49258 has 21 MA's), (18, 49300), (26, 49363), (35, 49438),

Gene: Correa_67 Start: 42273, Stop: 42551, Start Num: 11
Candidate Starts for Correa_67:
(Start: 11 @42273 has 18 MA's), (17, 42318), (21, 42351), (26, 42402), (32, 42450), (34, 42468), (36, 42495), (38, 42516),

Gene: Djungelskog_64 Start: 42498, Stop: 42749, Start Num: 16
Candidate Starts for Djungelskog_64:
(Start: 16 @42498 has 12 MA's), (25, 42585), (28, 42618), (31, 42642), (32, 42645), (39, 42726),

Gene: DoctorPepper_65 Start: 42203, Stop: 42454, Start Num: 16
Candidate Starts for DoctorPepper_65:
(Start: 16 @42203 has 12 MA's), (25, 42290), (28, 42323), (31, 42347), (32, 42350), (39, 42431),

Gene: Dynamite_69 Start: 43288, Stop: 43566, Start Num: 11
Candidate Starts for Dynamite_69:
(Start: 11 @43288 has 18 MA's), (17, 43333), (19, 43348), (21, 43366), (26, 43417), (32, 43465), (34, 43483), (38, 43531),

Gene: Egad_65 Start: 42494, Stop: 42745, Start Num: 16
Candidate Starts for Egad_65:
(Start: 16 @42494 has 12 MA's), (25, 42581), (28, 42614), (31, 42638), (32, 42641),

Gene: Elsa_69 Start: 43472, Stop: 43750, Start Num: 11

Candidate Starts for Elsa_69:

(Start: 11 @43472 has 18 MA's), (17, 43517), (19, 43532), (21, 43550), (26, 43601), (32, 43649), (34, 43667),

Gene: Elver_118 Start: 65771, Stop: 66007, Start Num: 13

Candidate Starts for Elver_118:

(12, 65768), (Start: 13 @65771 has 21 MA's), (20, 65837), (30, 65921), (32, 65930), (33, 65933), (34, 65948),

Gene: EvePickles_90 Start: 50663, Stop: 50890, Start Num: 13

Candidate Starts for EvePickles_90:

(Start: 13 @50663 has 21 MA's), (18, 50714), (21, 50735), (24, 50756), (31, 50822), (32, 50825), (34, 50843),

Gene: Faja_90 Start: 49924, Stop: 50151, Start Num: 13

Candidate Starts for Faja_90:

(2, 49681), (Start: 13 @49924 has 21 MA's), (18, 49975), (21, 49996), (31, 50083), (32, 50086), (34, 50104),

Gene: Globfish_88 Start: 48667, Stop: 48894, Start Num: 13

Candidate Starts for Globfish_88:

(Start: 13 @48667 has 21 MA's), (21, 48739), (31, 48826), (32, 48829), (34, 48847),

Gene: GoCrazy_66 Start: 42732, Stop: 43010, Start Num: 11

Candidate Starts for GoCrazy_66:

(Start: 11 @42732 has 18 MA's), (17, 42777), (19, 42792), (21, 42810), (26, 42861), (32, 42909), (34, 42927),

Gene: Gorpy_87 Start: 50675, Stop: 50902, Start Num: 13

Candidate Starts for Gorpy_87:

(Start: 13 @50675 has 21 MA's), (21, 50747), (24, 50768), (31, 50834), (32, 50837),

Gene: Hankly_68 Start: 42356, Stop: 42634, Start Num: 11

Candidate Starts for Hankly_68:

(Start: 11 @42356 has 18 MA's), (17, 42401), (19, 42416), (21, 42434), (26, 42485), (32, 42533), (34, 42551), (38, 42599),

Gene: Heisenberger_68 Start: 42694, Stop: 42972, Start Num: 11

Candidate Starts for Heisenberger_68:

(Start: 11 @42694 has 18 MA's), (17, 42739), (19, 42754), (21, 42772), (26, 42823), (32, 42871), (34, 42889), (38, 42937),

Gene: Hestia_83 Start: 47282, Stop: 47509, Start Num: 13

Candidate Starts for Hestia_83:

(Start: 13 @47282 has 21 MA's), (21, 47354), (24, 47375), (31, 47441), (32, 47444),

Gene: Hillester_93 Start: 49669, Stop: 49896, Start Num: 13

Candidate Starts for Hillester_93:

(Start: 13 @49669 has 21 MA's), (21, 49741), (24, 49762), (31, 49828), (32, 49831), (34, 49849), (37, 49879),

Gene: Isolde_90 Start: 50517, Stop: 50744, Start Num: 13

Candidate Starts for Isolde_90:

(Start: 13 @50517 has 21 MA's), (15, 50523), (18, 50568), (21, 50589), (24, 50610), (31, 50676), (32, 50679), (34, 50697),

Gene: JEGGS_68 Start: 42773, Stop: 43051, Start Num: 11

Candidate Starts for JEGGS_68:

(Start: 11 @42773 has 18 MA's), (17, 42818), (19, 42833), (21, 42851), (26, 42902), (32, 42950), (34, 42968), (38, 43016),

Gene: Kardesai_69 Start: 43082, Stop: 43360, Start Num: 11

Candidate Starts for Kardesai_69:

(Start: 11 @43082 has 18 MA's), (17, 43127), (19, 43142), (21, 43160), (26, 43211), (32, 43259), (34, 43277),

Gene: KeaneyLin_65 Start: 42732, Stop: 43010, Start Num: 11

Candidate Starts for KeaneyLin_65:

(Start: 11 @42732 has 18 MA's), (17, 42777), (19, 42792), (21, 42810), (26, 42861), (32, 42909), (34, 42927),

Gene: Linda_65 Start: 42496, Stop: 42747, Start Num: 16

Candidate Starts for Linda_65:

(Start: 16 @42496 has 12 MA's), (25, 42583), (28, 42616), (31, 42640), (32, 42643), (39, 42724),

Gene: Michelle_65 Start: 42498, Stop: 42749, Start Num: 16

Candidate Starts for Michelle_65:

(Start: 16 @42498 has 12 MA's), (25, 42585), (28, 42618), (31, 42642), (32, 42645), (39, 42726),

Gene: MidnightRain_96 Start: 51168, Stop: 51395, Start Num: 13

Candidate Starts for MidnightRain_96:

(Start: 13 @51168 has 21 MA's), (18, 51219), (21, 51240), (24, 51261), (31, 51327), (32, 51330), (34, 51348),

Gene: Mooshroom_69 Start: 43082, Stop: 43360, Start Num: 11

Candidate Starts for Mooshroom_69:

(Start: 11 @43082 has 18 MA's), (17, 43127), (19, 43142), (21, 43160), (26, 43211), (32, 43259), (34, 43277),

Gene: MrAaronian_65 Start: 42498, Stop: 42749, Start Num: 16

Candidate Starts for MrAaronian_65:

(Start: 16 @42498 has 12 MA's), (25, 42585), (28, 42618), (31, 42642), (32, 42645), (39, 42726),

Gene: Mudcat_65 Start: 44131, Stop: 44409, Start Num: 11

Candidate Starts for Mudcat_65:

(Start: 11 @44131 has 18 MA's), (17, 44176), (19, 44191), (21, 44209), (26, 44260), (32, 44308), (34, 44326), (38, 44374),

Gene: NapoleonB_70 Start: 43288, Stop: 43566, Start Num: 11

Candidate Starts for NapoleonB_70:

(Start: 11 @43288 has 18 MA's), (17, 43333), (19, 43348), (21, 43366), (26, 43417), (32, 43465), (34, 43483), (38, 43531),

Gene: Nason_69 Start: 43472, Stop: 43750, Start Num: 11

Candidate Starts for Nason_69:

(Start: 11 @43472 has 18 MA's), (17, 43517), (19, 43532), (21, 43550), (26, 43601), (32, 43649), (34, 43667),

Gene: Paella_119 Start: 66359, Stop: 66595, Start Num: 13

Candidate Starts for Paella_119:

(12, 66356), (Start: 13 @66359 has 21 MA's), (20, 66425), (30, 66509), (32, 66518), (33, 66521), (34, 66536),

Gene: Persistence_84 Start: 47327, Stop: 47554, Start Num: 13

Candidate Starts for Persistence_84:

(Start: 13 @47327 has 21 MA's), (18, 47378), (21, 47399), (24, 47420), (31, 47486), (32, 47489),

Gene: Phrank15_96 Start: 50347, Stop: 50574, Start Num: 13

Candidate Starts for Phrank15_96:

(Start: 13 @50347 has 21 MA's), (21, 50419), (24, 50440), (31, 50506), (32, 50509),

Gene: ProfFrink_66 Start: 42493, Stop: 42744, Start Num: 16

Candidate Starts for ProfFrink_66:

(Start: 16 @42493 has 12 MA's), (25, 42580), (28, 42613), (31, 42637), (32, 42640),

Gene: Qui_119 Start: 66359, Stop: 66595, Start Num: 13

Candidate Starts for Qui_119:

(12, 66356), (Start: 13 @66359 has 21 MA's), (20, 66425), (30, 66509), (32, 66518), (33, 66521), (34, 66536),

Gene: RadFad_94 Start: 49669, Stop: 49896, Start Num: 13

Candidate Starts for RadFad_94:

(Start: 13 @49669 has 21 MA's), (21, 49741), (24, 49762), (31, 49828), (32, 49831), (34, 49849), (37, 49879),

Gene: Raphaella_87 Start: 48624, Stop: 48887, Start Num: 13

Candidate Starts for Raphaella_87:

(Start: 13 @48624 has 21 MA's), (22, 48705), (23, 48711),

Gene: Raqqa_93 Start: 50720, Stop: 50947, Start Num: 13

Candidate Starts for Raqqa_93:

(6, 50645), (8, 50678), (Start: 13 @50720 has 21 MA's), (21, 50792), (31, 50879), (32, 50882), (34, 50900),

Gene: Raunak_66 Start: 42154, Stop: 42405, Start Num: 16

Candidate Starts for Raunak_66:

(Start: 16 @42154 has 12 MA's), (25, 42241), (28, 42274), (31, 42298), (32, 42301),

Gene: Richie_92 Start: 50519, Stop: 50746, Start Num: 13

Candidate Starts for Richie_92:

(Start: 13 @50519 has 21 MA's), (21, 50591), (24, 50612), (31, 50678), (32, 50681), (37, 50729),

Gene: Sakai_86 Start: 49386, Stop: 49613, Start Num: 13

Candidate Starts for Sakai_86:

(Start: 13 @49386 has 21 MA's), (21, 49458), (24, 49479), (31, 49545), (32, 49548),

Gene: Salk_65 Start: 42496, Stop: 42747, Start Num: 16

Candidate Starts for Salk_65:

(Start: 16 @42496 has 12 MA's), (25, 42583), (28, 42616), (31, 42640), (32, 42643), (39, 42724),

Gene: Sarge_61 Start: 33816, Stop: 34043, Start Num: 13

Candidate Starts for Sarge_61:

(Start: 13 @33816 has 21 MA's), (18, 33867), (21, 33888), (27, 33945), (32, 33978),

Gene: Sashimi_92 Start: 49657, Stop: 49884, Start Num: 13

Candidate Starts for Sashimi_92:

(10, 49651), (Start: 13 @49657 has 21 MA's), (18, 49708), (21, 49729), (24, 49750), (31, 49816), (32, 49819),

Gene: Seahorse_95 Start: 54032, Stop: 54259, Start Num: 13

Candidate Starts for Seahorse_95:

(Start: 13 @54032 has 21 MA's), (21, 54104), (24, 54125), (31, 54191), (32, 54194), (37, 54242),

Gene: Shiba_64 Start: 42154, Stop: 42405, Start Num: 16

Candidate Starts for Shiba_64:

(Start: 16 @42154 has 12 MA's), (25, 42241), (28, 42274), (31, 42298), (32, 42301), (39, 42382),

Gene: Shoya_64 Start: 35887, Stop: 36126, Start Num: 13

Candidate Starts for Shoya_64:

(Start: 13 @35887 has 21 MA's), (26, 35992), (30, 36031), (35, 36067),

Gene: SilentRX_47 Start: 38442, Stop: 38200, Start Num: 13

Candidate Starts for SilentRX_47:

(Start: 13 @38442 has 21 MA's), (18, 38391), (23, 38358), (31, 38283),

Gene: Sloopyjoe_65 Start: 42500, Stop: 42751, Start Num: 16

Candidate Starts for Sloopyjoe_65:

(Start: 16 @42500 has 12 MA's), (25, 42587), (28, 42620), (31, 42644), (32, 42647), (39, 42728),

Gene: Sonali_66 Start: 45518, Stop: 45778, Start Num: 13

Candidate Starts for Sonali_66:

(4, 45302), (Start: 13 @45518 has 21 MA's), (21, 45608), (23, 45620), (32, 45698), (34, 45716),

Gene: Sporto_64 Start: 43615, Stop: 43866, Start Num: 16

Candidate Starts for Sporto_64:

(Start: 16 @43615 has 12 MA's), (31, 43759), (32, 43762), (39, 43843),

Gene: StarLord_65 Start: 42493, Stop: 42744, Start Num: 16

Candidate Starts for StarLord_65:

(Start: 16 @42493 has 12 MA's), (25, 42580), (28, 42613), (31, 42637), (32, 42640), (39, 42721),

Gene: Stayer_65 Start: 42496, Stop: 42747, Start Num: 16

Candidate Starts for Stayer_65:

(Start: 16 @42496 has 12 MA's), (25, 42583), (28, 42616), (31, 42640), (32, 42643), (39, 42724),

Gene: Tiff81_89 Start: 47744, Stop: 48007, Start Num: 13

Candidate Starts for Tiff81_89:

(Start: 13 @47744 has 21 MA's), (22, 47825), (23, 47831),

Gene: Tribby_72 Start: 43659, Stop: 43937, Start Num: 11

Candidate Starts for Tribby_72:

(Start: 11 @43659 has 18 MA's), (17, 43704), (21, 43737), (26, 43788), (32, 43836), (34, 43854), (36, 43881), (38, 43902),

Gene: Xenomorph_65 Start: 43143, Stop: 43421, Start Num: 11

Candidate Starts for Xenomorph_65:

(Start: 11 @43143 has 18 MA's), (17, 43188), (19, 43203), (21, 43221), (26, 43272), (32, 43320), (34, 43338), (36, 43365), (38, 43386),

Gene: YoungHarleezy_88 Start: 50145, Stop: 50372, Start Num: 13

Candidate Starts for YoungHarleezy_88:

(Start: 13 @50145 has 21 MA's), (15, 50151), (18, 50196), (21, 50217), (24, 50238), (31, 50304), (32, 50307),

Gene: Zucker_89 Start: 50629, Stop: 50856, Start Num: 13

Candidate Starts for Zucker_89:

(Start: 13 @50629 has 21 MA's), (21, 50701), (24, 50722), (31, 50788), (32, 50791),