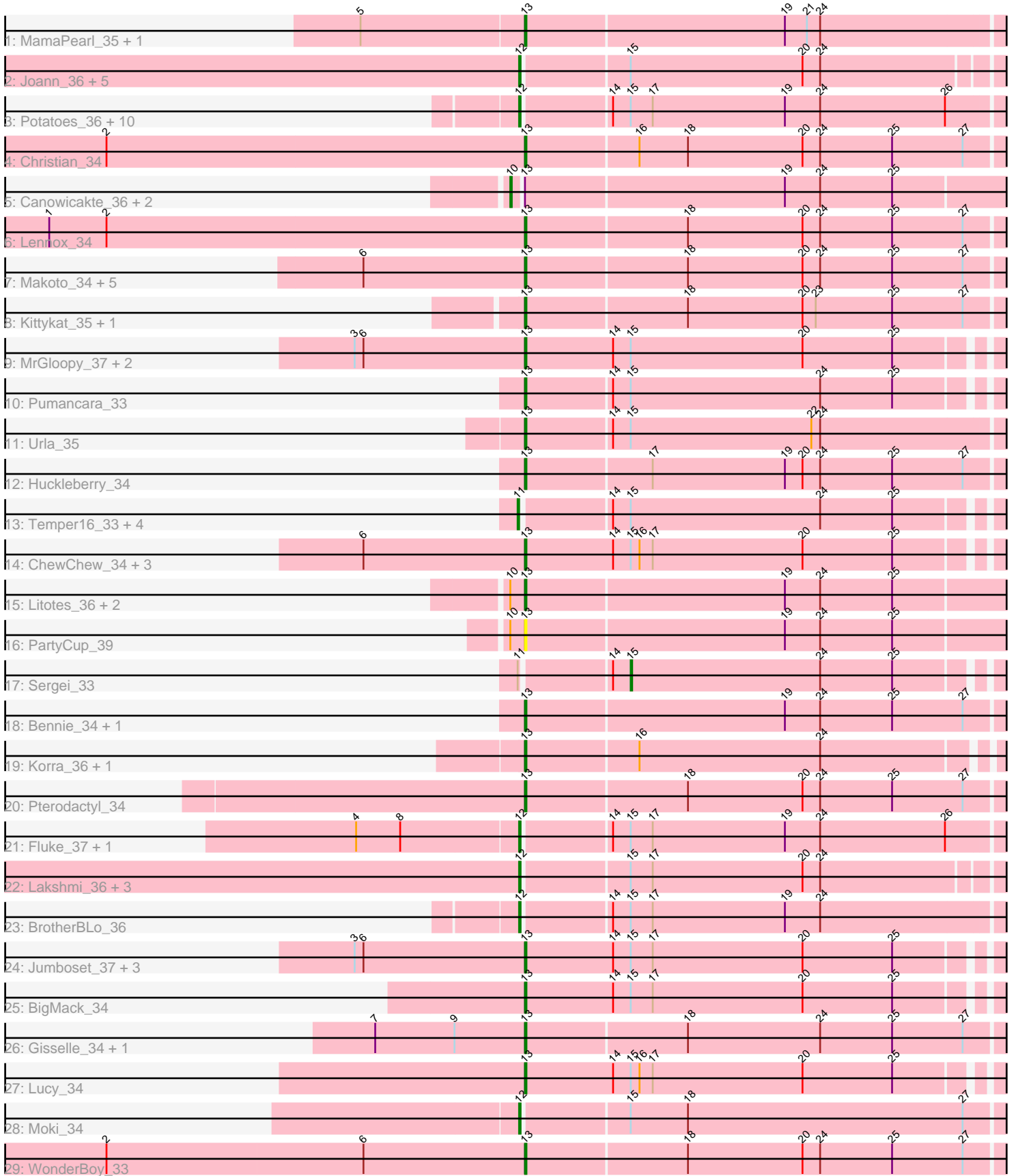


Pham 154655



Note: Tracks are now grouped by subcluster and scaled. Switching in subcluster is indicated by changes in track color. Track scale is now set by default to display the region 30 bp upstream of start 1 to 30 bp downstream of the last possible start. If this default region is judged to be packed too tightly with annotated starts, the track will be further scaled to only show that region of the ORF with annotated starts. This action will be indicated by adding "Zoomed" to the title. For starts, yellow indicates the location of called starts comprised solely of Glimmer/GeneMark auto-annotations, green indicates the location of called starts with at least 1 manual gene annotation.

Pham 154655 Report

This analysis was run 04/12/24 on database version 558.

Pham number 154655 has 74 members, 2 are drafts.

Phages represented in each track:

- Track 1 : MamaPearl_35, EstebanJulior_35
- Track 2 : Joann_36, GreenHearts_36, Albanese_36, Oxyntrius_36, Nubia_36, Greenhouse_37
- Track 3 : Potatoes_36, Rozby_37, Riverdale_37, Beethoven_37, Kalizoi_38, Cholula_36, Glenn_37, Carpal_36, Immaculata_36, Vallejo_37, TattModd_36
- Track 4 : Christian_34
- Track 5 : Canowicakte_36, Suppi_36, Wayne_36
- Track 6 : Lennox_34
- Track 7 : Makoto_34, CristinaYang_34, OurGirlNessie_33, Lasagna_33, DrRobert_33, LilStuart_34
- Track 8 : Kittykat_35, Preamble_34
- Track 9 : MrGloopy_37, Dino_37, Zorro_37
- Track 10 : Pumancara_33
- Track 11 : Urla_35
- Track 12 : Huckleberry_34
- Track 13 : Temper16_33, Daiboju_33, KingBob_33, Herb_33, Maria1952_32
- Track 14 : ChewChew_34, Bodacious_34, PitaDog_34, Nancia_34
- Track 15 : Litotes_36, CallieOMalley_36, AppleCider_36
- Track 16 : PartyCup_39
- Track 17 : Sergei_33
- Track 18 : Bennie_34, HeadNerd_34
- Track 19 : Korra_36, Wawa_36
- Track 20 : Pterodactyl_34
- Track 21 : Fluke_37, Scuttle_36
- Track 22 : Lakshmi_36, RcigaStruga_35, Misaeng_35, Huntingdon_35
- Track 23 : BrotherBLo_36
- Track 24 : Jumboset_37, MeganNoll_36, RAP15_37, Savage2526_37
- Track 25 : BigMack_34
- Track 26 : Gisselle_34, DreamTeam_34
- Track 27 : Lucy_34
- Track 28 : Moki_34
- Track 29 : WonderBoy_33

Summary of Final Annotations (See graph section above for start numbers):

The start number called the most often in the published annotations is 13, it was called in 39 of the 72 non-draft genes in the pham.

Genes that call this "Most Annotated" start:

- AppleCider_36, Bennie_34, BigMack_34, Bodacious_34, CallieOMalley_36, ChewChew_34, Christian_34, CristinaYang_34, Dino_37, DrRobert_33, DreamTeam_34, EstebanJulior_35, Gisselle_34, HeadNerd_34, Huckleberry_34, Jumboset_37, Kittykat_35, Korra_36, Lasagna_33, Lennox_34, LilStuart_34, Litotes_36, Lucy_34, Makoto_34, MamaPearl_35, MeganNoll_36, MrGloopy_37, Nancia_34, OurGirlNessie_33, PartyCup_39, PitaDog_34, Preamble_34, Pterodactyl_34, Pumancara_33, RAP15_37, Savage2526_37, Urla_35, Wawa_36, WonderBoy_33, Zorro_37,

Genes that have the "Most Annotated" start but do not call it:

- Canowicakte_36, Suppi_36, Wayne_36,

Genes that do not have the "Most Annotated" start:

- Albanese_36, Beethoven_37, BrotherBLo_36, Carpal_36, Cholula_36, Daiboju_33, Fluke_37, Glenn_37, GreenHearts_36, Greenhouse_37, Herb_33, Huntingdon_35, Immaculata_36, Joann_36, Kalizoi_38, KingBob_33, Lakshmi_36, Maria1952_32, Misaeng_35, Moki_34, Nubia_36, Oxynfrius_36, Potatoes_36, RcigaStruga_35, Riverdale_37, Rozby_37, Scuttle_36, Sergei_33, TattModd_36, Temper16_33, Vallejo_37,

Summary by start number:

Start 10:

- Found in 7 of 74 (9.5%) of genes in pham
- Manual Annotations of this start: 3 of 72
- Called 42.9% of time when present
- Phage (with cluster) where this start called: Canowicakte_36 (AK), Suppi_36 (AK), Wayne_36 (AK),

Start 11:

- Found in 6 of 74 (8.1%) of genes in pham
- Manual Annotations of this start: 5 of 72
- Called 83.3% of time when present
- Phage (with cluster) where this start called: Daiboju_33 (AK), Herb_33 (AK), KingBob_33 (AK), Maria1952_32 (AK), Temper16_33 (AK),

Start 12:

- Found in 25 of 74 (33.8%) of genes in pham
- Manual Annotations of this start: 24 of 72
- Called 100.0% of time when present
- Phage (with cluster) where this start called: Albanese_36 (AK), Beethoven_37 (AK), BrotherBLo_36 (AK), Carpal_36 (AK), Cholula_36 (AK), Fluke_37 (AK), Glenn_37 (AK), GreenHearts_36 (AK), Greenhouse_37 (AK), Huntingdon_35 (AK), Immaculata_36 (AK), Joann_36 (AK), Kalizoi_38 (AK), Lakshmi_36 (AK), Misaeng_35 (AK), Moki_34 (AK), Nubia_36 (AK), Oxynfrius_36 (AK), Potatoes_36 (AK), RcigaStruga_35 (AK), Riverdale_37 (AK), Rozby_37 (AK), Scuttle_36 (AK), TattModd_36 (AK), Vallejo_37 (AK),

Start 13:

- Found in 43 of 74 (58.1%) of genes in pham
- Manual Annotations of this start: 39 of 72
- Called 93.0% of time when present
- Phage (with cluster) where this start called: AppleCider_36 (AK), Bennie_34 (AK), BigMack_34 (AK), Bodacious_34 (AK), CallieOMalley_36 (AK), ChewChew_34 (AK), Christian_34 (AK), CristinaYang_34 (AK), Dino_37 (AK), DrRobert_33 (AK), DreamTeam_34 (AK), EstebanJulior_35 (AK), Gisselle_34 (AK), HeadNerd_34 (AK), Huckleberry_34 (AK), Jumboset_37 (AK), Kittykat_35 (AK), Korra_36 (AK), Lasagna_33 (AK), Lennox_34 (AK), LilStuart_34 (AK), Litotes_36 (AK), Lucy_34 (AK), Makoto_34 (AK), MamaPearl_35 (AK), MeganNoll_36 (AK), MrGloopy_37 (AK), Nancia_34 (AK), OurGirlNessie_33 (AK), PartyCup_39 (AK), PitaDog_34 (AK), Preamble_34 (AK), Pterodactyl_34 (AK), Pumancara_33 (AK), RAP15_37 (AK), Savage2526_37 (AK), Urla_35 (AK), Wawa_36 (AK), WonderBoy_33 (AK), Zorro_37 (AK),

Start 15:

- Found in 46 of 74 (62.2%) of genes in pham
- Manual Annotations of this start: 1 of 72
- Called 2.2% of time when present
- Phage (with cluster) where this start called: Sergei_33 (AK),

Summary by clusters:

There is one cluster represented in this pham: AK

Info for manual annotations of cluster AK:

- Start number 10 was manually annotated 3 times for cluster AK.
- Start number 11 was manually annotated 5 times for cluster AK.
- Start number 12 was manually annotated 24 times for cluster AK.
- Start number 13 was manually annotated 39 times for cluster AK.
- Start number 15 was manually annotated 1 time for cluster AK.

Gene Information:

Gene: Albanese_36 Start: 26381, Stop: 26731, Start Num: 12

Candidate Starts for Albanese_36:

(Start: 12 @26381 has 24 MA's), (Start: 15 @26450 has 1 MA's), (20, 26567), (24, 26579),

Gene: AppleCider_36 Start: 26075, Stop: 26431, Start Num: 13

Candidate Starts for AppleCider_36:

(Start: 10 @26069 has 3 MA's), (Start: 13 @26075 has 39 MA's), (19, 26249), (24, 26273), (25, 26321),

Gene: Beethoven_37 Start: 26264, Stop: 26617, Start Num: 12

Candidate Starts for Beethoven_37:

(Start: 12 @26264 has 24 MA's), (14, 26321), (Start: 15 @26333 has 1 MA's), (17, 26348), (19, 26438), (24, 26462), (26, 26546),

Gene: Bennie_34 Start: 24869, Stop: 25225, Start Num: 13

Candidate Starts for Bennie_34:

(Start: 13 @24869 has 39 MA's), (19, 25043), (24, 25067), (25, 25115), (27, 25163),

Gene: BigMack_34 Start: 24977, Stop: 25324, Start Num: 13

Candidate Starts for BigMack_34:

(Start: 13 @24977 has 39 MA's), (14, 25037), (Start: 15 @25049 has 1 MA's), (17, 25064), (20, 25166), (25, 25226),

Gene: Bodacious_34 Start: 24906, Stop: 25253, Start Num: 13

Candidate Starts for Bodacious_34:

(6, 24798), (Start: 13 @24906 has 39 MA's), (14, 24966), (Start: 15 @24978 has 1 MA's), (16, 24984), (17, 24993), (20, 25095), (25, 25155),

Gene: BrotherBLo_36 Start: 26087, Stop: 26440, Start Num: 12

Candidate Starts for BrotherBLo_36:

(Start: 12 @26087 has 24 MA's), (14, 26144), (Start: 15 @26156 has 1 MA's), (17, 26171), (19, 26261), (24, 26285),

Gene: CallieOMalley_36 Start: 26075, Stop: 26431, Start Num: 13

Candidate Starts for CallieOMalley_36:

(Start: 10 @26069 has 3 MA's), (Start: 13 @26075 has 39 MA's), (19, 26249), (24, 26273), (25, 26321),

Gene: Canowicakte_36 Start: 26104, Stop: 26466, Start Num: 10

Candidate Starts for Canowicakte_36:

(Start: 10 @26104 has 3 MA's), (Start: 13 @26110 has 39 MA's), (19, 26284), (24, 26308), (25, 26356),

Gene: Carpal_36 Start: 26067, Stop: 26420, Start Num: 12

Candidate Starts for Carpal_36:

(Start: 12 @26067 has 24 MA's), (14, 26124), (Start: 15 @26136 has 1 MA's), (17, 26151), (19, 26241), (24, 26265), (26, 26349),

Gene: ChewChew_34 Start: 24901, Stop: 25248, Start Num: 13

Candidate Starts for ChewChew_34:

(6, 24793), (Start: 13 @24901 has 39 MA's), (14, 24961), (Start: 15 @24973 has 1 MA's), (16, 24979), (17, 24988), (20, 25090), (25, 25150),

Gene: Cholula_36 Start: 26113, Stop: 26466, Start Num: 12

Candidate Starts for Cholula_36:

(Start: 12 @26113 has 24 MA's), (14, 26170), (Start: 15 @26182 has 1 MA's), (17, 26197), (19, 26287), (24, 26311), (26, 26395),

Gene: Christian_34 Start: 24903, Stop: 25259, Start Num: 13

Candidate Starts for Christian_34:

(2, 24621), (Start: 13 @24903 has 39 MA's), (16, 24978), (18, 25011), (20, 25089), (24, 25101), (25, 25149), (27, 25197),

Gene: CristinaYang_34 Start: 24906, Stop: 25262, Start Num: 13

Candidate Starts for CristinaYang_34:

(6, 24798), (Start: 13 @24906 has 39 MA's), (18, 25014), (20, 25092), (24, 25104), (25, 25152), (27, 25200),

Gene: Daiboju_33 Start: 25714, Stop: 26058, Start Num: 11

Candidate Starts for Daiboju_33:

(Start: 11 @25714 has 5 MA's), (14, 25771), (Start: 15 @25783 has 1 MA's), (24, 25912), (25, 25960),

Gene: Dino_37 Start: 26225, Stop: 26572, Start Num: 13

Candidate Starts for Dino_37:

(3, 26111), (6, 26117), (Start: 13 @26225 has 39 MA's), (14, 26285), (Start: 15 @26297 has 1 MA's), (20, 26414), (25, 26474),

Gene: DrRobert_33 Start: 24665, Stop: 25021, Start Num: 13

Candidate Starts for DrRobert_33:

(6, 24557), (Start: 13 @24665 has 39 MA's), (18, 24773), (20, 24851), (24, 24863), (25, 24911), (27, 24959),

Gene: DreamTeam_34 Start: 24997, Stop: 25353, Start Num: 13

Candidate Starts for DreamTeam_34:

(7, 24895), (9, 24949), (Start: 13 @24997 has 39 MA's), (18, 25105), (24, 25195), (25, 25243), (27, 25291),

Gene: EstebanJulior_35 Start: 26057, Stop: 26410, Start Num: 13

Candidate Starts for EstebanJulior_35:

(5, 25949), (Start: 13 @26057 has 39 MA's), (19, 26231), (21, 26246), (24, 26255),

Gene: Fluke_37 Start: 26335, Stop: 26688, Start Num: 12

Candidate Starts for Fluke_37:

(4, 26227), (8, 26257), (Start: 12 @26335 has 24 MA's), (14, 26392), (Start: 15 @26404 has 1 MA's), (17, 26419), (19, 26509), (24, 26533), (26, 26617),

Gene: Gisselle_34 Start: 24997, Stop: 25353, Start Num: 13

Candidate Starts for Gisselle_34:

(7, 24895), (9, 24949), (Start: 13 @24997 has 39 MA's), (18, 25105), (24, 25195), (25, 25243), (27, 25291),

Gene: Glenn_37 Start: 26321, Stop: 26674, Start Num: 12

Candidate Starts for Glenn_37:

(Start: 12 @26321 has 24 MA's), (14, 26378), (Start: 15 @26390 has 1 MA's), (17, 26405), (19, 26495), (24, 26519), (26, 26603),

Gene: GreenHearts_36 Start: 26473, Stop: 26823, Start Num: 12

Candidate Starts for GreenHearts_36:

(Start: 12 @26473 has 24 MA's), (Start: 15 @26542 has 1 MA's), (20, 26659), (24, 26671),

Gene: Greenhouse_37 Start: 26388, Stop: 26738, Start Num: 12

Candidate Starts for Greenhouse_37:

(Start: 12 @26388 has 24 MA's), (Start: 15 @26457 has 1 MA's), (20, 26574), (24, 26586),

Gene: HeadNerd_34 Start: 24869, Stop: 25225, Start Num: 13

Candidate Starts for HeadNerd_34:

(Start: 13 @24869 has 39 MA's), (19, 25043), (24, 25067), (25, 25115), (27, 25163),

Gene: Herb_33 Start: 25713, Stop: 26057, Start Num: 11

Candidate Starts for Herb_33:

(Start: 11 @25713 has 5 MA's), (14, 25770), (Start: 15 @25782 has 1 MA's), (24, 25911), (25, 25959),

Gene: Huckleberry_34 Start: 24852, Stop: 25208, Start Num: 13
Candidate Starts for Huckleberry_34:
(Start: 13 @24852 has 39 MA's), (17, 24936), (19, 25026), (20, 25038), (24, 25050), (25, 25098), (27, 25146),

Gene: Huntingdon_35 Start: 26124, Stop: 26468, Start Num: 12
Candidate Starts for Huntingdon_35:
(Start: 12 @26124 has 24 MA's), (Start: 15 @26193 has 1 MA's), (17, 26208), (20, 26310), (24, 26322),

Gene: Immaculata_36 Start: 26112, Stop: 26465, Start Num: 12
Candidate Starts for Immaculata_36:
(Start: 12 @26112 has 24 MA's), (14, 26169), (Start: 15 @26181 has 1 MA's), (17, 26196), (19, 26286), (24, 26310), (26, 26394),

Gene: Joann_36 Start: 26350, Stop: 26700, Start Num: 12
Candidate Starts for Joann_36:
(Start: 12 @26350 has 24 MA's), (Start: 15 @26419 has 1 MA's), (20, 26536), (24, 26548),

Gene: Jumboset_37 Start: 26207, Stop: 26554, Start Num: 13
Candidate Starts for Jumboset_37:
(3, 26093), (6, 26099), (Start: 13 @26207 has 39 MA's), (14, 26267), (Start: 15 @26279 has 1 MA's), (17, 26294), (20, 26396), (25, 26456),

Gene: Kalizoi_38 Start: 26263, Stop: 26616, Start Num: 12
Candidate Starts for Kalizoi_38:
(Start: 12 @26263 has 24 MA's), (14, 26320), (Start: 15 @26332 has 1 MA's), (17, 26347), (19, 26437), (24, 26461), (26, 26545),

Gene: KingBob_33 Start: 25714, Stop: 26058, Start Num: 11
Candidate Starts for KingBob_33:
(Start: 11 @25714 has 5 MA's), (14, 25771), (Start: 15 @25783 has 1 MA's), (24, 25912), (25, 25960),

Gene: Kittykat_35 Start: 25117, Stop: 25473, Start Num: 13
Candidate Starts for Kittykat_35:
(Start: 13 @25117 has 39 MA's), (18, 25225), (20, 25303), (23, 25312), (25, 25363), (27, 25411),

Gene: Korra_36 Start: 26080, Stop: 26424, Start Num: 13
Candidate Starts for Korra_36:
(Start: 13 @26080 has 39 MA's), (16, 26155), (24, 26278),

Gene: Lakshmi_36 Start: 26357, Stop: 26707, Start Num: 12
Candidate Starts for Lakshmi_36:
(Start: 12 @26357 has 24 MA's), (Start: 15 @26426 has 1 MA's), (17, 26441), (20, 26543), (24, 26555),

Gene: Lasagna_33 Start: 24680, Stop: 25036, Start Num: 13
Candidate Starts for Lasagna_33:
(6, 24572), (Start: 13 @24680 has 39 MA's), (18, 24788), (20, 24866), (24, 24878), (25, 24926), (27, 24974),

Gene: Lennox_34 Start: 24891, Stop: 25247, Start Num: 13
Candidate Starts for Lennox_34:

(1, 24570), (2, 24609), (Start: 13 @24891 has 39 MA's), (18, 24999), (20, 25077), (24, 25089), (25, 25137), (27, 25185),

Gene: LilStuart_34 Start: 24894, Stop: 25250, Start Num: 13

Candidate Starts for LilStuart_34:

(6, 24786), (Start: 13 @24894 has 39 MA's), (18, 25002), (20, 25080), (24, 25092), (25, 25140), (27, 25188),

Gene: Litotes_36 Start: 26060, Stop: 26416, Start Num: 13

Candidate Starts for Litotes_36:

(Start: 10 @26054 has 3 MA's), (Start: 13 @26060 has 39 MA's), (19, 26234), (24, 26258), (25, 26306),

Gene: Lucy_34 Start: 24882, Stop: 25229, Start Num: 13

Candidate Starts for Lucy_34:

(Start: 13 @24882 has 39 MA's), (14, 24942), (Start: 15 @24954 has 1 MA's), (16, 24960), (17, 24969), (20, 25071), (25, 25131),

Gene: Makoto_34 Start: 24902, Stop: 25258, Start Num: 13

Candidate Starts for Makoto_34:

(6, 24794), (Start: 13 @24902 has 39 MA's), (18, 25010), (20, 25088), (24, 25100), (25, 25148), (27, 25196),

Gene: MamaPearl_35 Start: 26057, Stop: 26410, Start Num: 13

Candidate Starts for MamaPearl_35:

(5, 25949), (Start: 13 @26057 has 39 MA's), (19, 26231), (21, 26246), (24, 26255),

Gene: Maria1952_32 Start: 25713, Stop: 26057, Start Num: 11

Candidate Starts for Maria1952_32:

(Start: 11 @25713 has 5 MA's), (14, 25770), (Start: 15 @25782 has 1 MA's), (24, 25911), (25, 25959),

Gene: MeganNoll_36 Start: 26264, Stop: 26611, Start Num: 13

Candidate Starts for MeganNoll_36:

(3, 26150), (6, 26156), (Start: 13 @26264 has 39 MA's), (14, 26324), (Start: 15 @26336 has 1 MA's), (17, 26351), (20, 26453), (25, 26513),

Gene: Misaeng_35 Start: 26357, Stop: 26701, Start Num: 12

Candidate Starts for Misaeng_35:

(Start: 12 @26357 has 24 MA's), (Start: 15 @26426 has 1 MA's), (17, 26441), (20, 26543), (24, 26555),

Gene: Moki_34 Start: 25018, Stop: 25374, Start Num: 12

Candidate Starts for Moki_34:

(Start: 12 @25018 has 24 MA's), (Start: 15 @25087 has 1 MA's), (18, 25126), (27, 25312),

Gene: MrGloopy_37 Start: 26193, Stop: 26540, Start Num: 13

Candidate Starts for MrGloopy_37:

(3, 26079), (6, 26085), (Start: 13 @26193 has 39 MA's), (14, 26253), (Start: 15 @26265 has 1 MA's), (20, 26382), (25, 26442),

Gene: Nancia_34 Start: 24906, Stop: 25253, Start Num: 13

Candidate Starts for Nancia_34:

(6, 24798), (Start: 13 @24906 has 39 MA's), (14, 24966), (Start: 15 @24978 has 1 MA's), (16, 24984), (17, 24993), (20, 25095), (25, 25155),

Gene: Nubia_36 Start: 26306, Stop: 26656, Start Num: 12

Candidate Starts for Nubia_36:

(Start: 12 @26306 has 24 MA's), (Start: 15 @26375 has 1 MA's), (20, 26492), (24, 26504),

Gene: OurGirlNessie_33 Start: 24646, Stop: 25002, Start Num: 13

Candidate Starts for OurGirlNessie_33:

(6, 24538), (Start: 13 @24646 has 39 MA's), (18, 24754), (20, 24832), (24, 24844), (25, 24892), (27, 24940),

Gene: Oxynfrius_36 Start: 26335, Stop: 26685, Start Num: 12

Candidate Starts for Oxynfrius_36:

(Start: 12 @26335 has 24 MA's), (Start: 15 @26404 has 1 MA's), (20, 26521), (24, 26533),

Gene: PartyCup_39 Start: 26305, Stop: 26661, Start Num: 13

Candidate Starts for PartyCup_39:

(Start: 10 @26299 has 3 MA's), (Start: 13 @26305 has 39 MA's), (19, 26479), (24, 26503), (25, 26551),

Gene: PitaDog_34 Start: 24894, Stop: 25241, Start Num: 13

Candidate Starts for PitaDog_34:

(6, 24786), (Start: 13 @24894 has 39 MA's), (14, 24954), (Start: 15 @24966 has 1 MA's), (16, 24972), (17, 24981), (20, 25083), (25, 25143),

Gene: Potatoes_36 Start: 26113, Stop: 26466, Start Num: 12

Candidate Starts for Potatoes_36:

(Start: 12 @26113 has 24 MA's), (14, 26170), (Start: 15 @26182 has 1 MA's), (17, 26197), (19, 26287), (24, 26311), (26, 26395),

Gene: Preamble_34 Start: 24974, Stop: 25330, Start Num: 13

Candidate Starts for Preamble_34:

(Start: 13 @24974 has 39 MA's), (18, 25082), (20, 25160), (23, 25169), (25, 25220), (27, 25268),

Gene: Pterodactyl_34 Start: 24883, Stop: 25239, Start Num: 13

Candidate Starts for Pterodactyl_34:

(Start: 13 @24883 has 39 MA's), (18, 24991), (20, 25069), (24, 25081), (25, 25129), (27, 25177),

Gene: Pumancara_33 Start: 24734, Stop: 25078, Start Num: 13

Candidate Starts for Pumancara_33:

(Start: 13 @24734 has 39 MA's), (14, 24791), (Start: 15 @24803 has 1 MA's), (24, 24932), (25, 24980),

Gene: RAP15_37 Start: 26264, Stop: 26611, Start Num: 13

Candidate Starts for RAP15_37:

(3, 26150), (6, 26156), (Start: 13 @26264 has 39 MA's), (14, 26324), (Start: 15 @26336 has 1 MA's), (17, 26351), (20, 26453), (25, 26513),

Gene: RcigaStruga_35 Start: 26124, Stop: 26468, Start Num: 12

Candidate Starts for RcigaStruga_35:

(Start: 12 @26124 has 24 MA's), (Start: 15 @26193 has 1 MA's), (17, 26208), (20, 26310), (24, 26322),

Gene: Riverdale_37 Start: 26251, Stop: 26604, Start Num: 12

Candidate Starts for Riverdale_37:

(Start: 12 @26251 has 24 MA's), (14, 26308), (Start: 15 @26320 has 1 MA's), (17, 26335), (19, 26425), (24, 26449), (26, 26533),

Gene: Rozby_37 Start: 26252, Stop: 26605, Start Num: 12

Candidate Starts for Rozby_37:

(Start: 12 @26252 has 24 MA's), (14, 26309), (Start: 15 @26321 has 1 MA's), (17, 26336), (19, 26426), (24, 26450), (26, 26534),

Gene: Savage2526_37 Start: 26258, Stop: 26605, Start Num: 13

Candidate Starts for Savage2526_37:

(3, 26144), (6, 26150), (Start: 13 @26258 has 39 MA's), (14, 26318), (Start: 15 @26330 has 1 MA's), (17, 26345), (20, 26447), (25, 26507),

Gene: Scuttle_36 Start: 26245, Stop: 26598, Start Num: 12

Candidate Starts for Scuttle_36:

(4, 26137), (8, 26167), (Start: 12 @26245 has 24 MA's), (14, 26302), (Start: 15 @26314 has 1 MA's), (17, 26329), (19, 26419), (24, 26443), (26, 26527),

Gene: Sergei_33 Start: 25783, Stop: 26058, Start Num: 15

Candidate Starts for Sergei_33:

(Start: 11 @25714 has 5 MA's), (14, 25771), (Start: 15 @25783 has 1 MA's), (24, 25912), (25, 25960),

Gene: Suppi_36 Start: 26104, Stop: 26466, Start Num: 10

Candidate Starts for Suppi_36:

(Start: 10 @26104 has 3 MA's), (Start: 13 @26110 has 39 MA's), (19, 26284), (24, 26308), (25, 26356),

Gene: TattModd_36 Start: 26109, Stop: 26462, Start Num: 12

Candidate Starts for TattModd_36:

(Start: 12 @26109 has 24 MA's), (14, 26166), (Start: 15 @26178 has 1 MA's), (17, 26193), (19, 26283), (24, 26307), (26, 26391),

Gene: Temper16_33 Start: 25714, Stop: 26058, Start Num: 11

Candidate Starts for Temper16_33:

(Start: 11 @25714 has 5 MA's), (14, 25771), (Start: 15 @25783 has 1 MA's), (24, 25912), (25, 25960),

Gene: Urla_35 Start: 26069, Stop: 26437, Start Num: 13

Candidate Starts for Urla_35:

(Start: 13 @26069 has 39 MA's), (14, 26126), (Start: 15 @26138 has 1 MA's), (22, 26261), (24, 26267),

Gene: Vallejo_37 Start: 26254, Stop: 26607, Start Num: 12

Candidate Starts for Vallejo_37:

(Start: 12 @26254 has 24 MA's), (14, 26311), (Start: 15 @26323 has 1 MA's), (17, 26338), (19, 26428), (24, 26452), (26, 26536),

Gene: Wawa_36 Start: 26101, Stop: 26445, Start Num: 13

Candidate Starts for Wawa_36:

(Start: 13 @26101 has 39 MA's), (16, 26176), (24, 26299),

Gene: Wayne_36 Start: 26150, Stop: 26512, Start Num: 10

Candidate Starts for Wayne_36:

(Start: 10 @26150 has 3 MA's), (Start: 13 @26156 has 39 MA's), (19, 26330), (24, 26354), (25, 26402),

Gene: WonderBoy_33 Start: 24875, Stop: 25231, Start Num: 13

Candidate Starts for WonderBoy_33:

(2, 24593), (6, 24767), (Start: 13 @24875 has 39 MA's), (18, 24983), (20, 25061), (24, 25073), (25, 25121), (27, 25169),

Gene: Zorro_37 Start: 26225, Stop: 26572, Start Num: 13

Candidate Starts for Zorro_37:

(3, 26111), (6, 26117), (Start: 13 @26225 has 39 MA's), (14, 26285), (Start: 15 @26297 has 1 MA's), (20, 26414), (25, 26474),