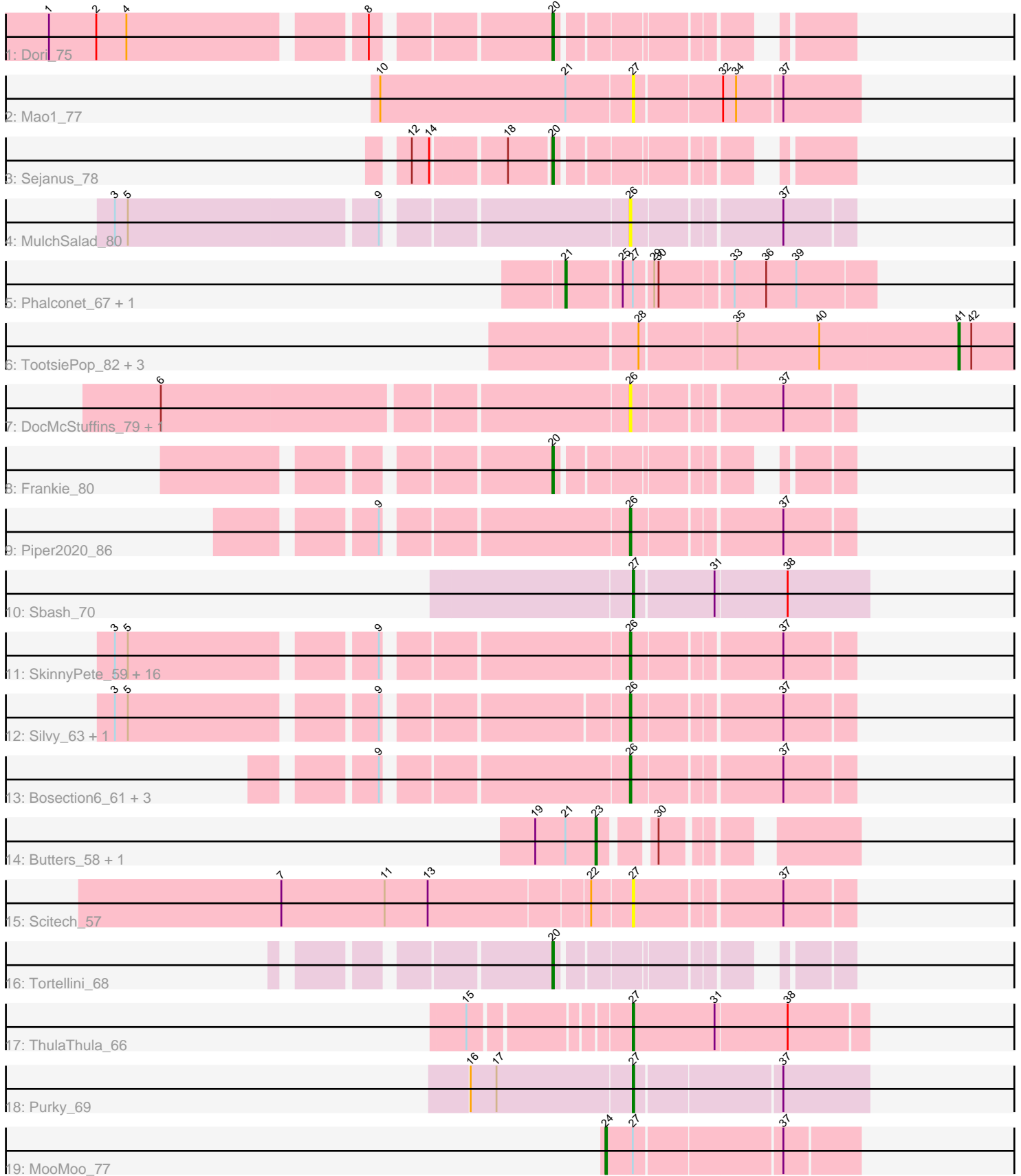


Pham 154801



Note: Tracks are now grouped by subcluster and scaled. Switching in subcluster is indicated by changes in track color. Track scale is now set by default to display the region 30 bp upstream of start 1 to 30 bp downstream of the last possible start. If this default region is judged to be packed too tightly with annotated starts, the track will be further scaled to only show that region of the ORF with annotated starts. This action will be indicated by adding "Zoomed" to the title. For starts, yellow indicates the location of called starts comprised solely of Glimmer/GeneMark auto-annotations, green indicates the location of called starts with at least 1 manual gene annotation.

Pham 154801 Report

This analysis was run 04/12/24 on database version 558.

Pham number 154801 has 45 members, 9 are drafts.

Phages represented in each track:

- Track 1 : Dori_75
- Track 2 : Mao1_77
- Track 3 : Sejanus_78
- Track 4 : MulchSalad_80
- Track 5 : Phalconet_67, PhesterPotato_72
- Track 6 : TootsiePop_82, Misha28_82, Awesomesauce_83, LilSpotty_79
- Track 7 : DocMcStuffins_79, ChickenDinner_86
- Track 8 : Frankie_80
- Track 9 : Piper2020_86
- Track 10 : Sbash_70
- Track 11 : SkinnyPete_59, Xerxes_62, Melville_67, FirstPlacePfu_64, Chewbacca_65, Schnauzer_63, Philonius_62, Smurph_62, Silvafighter_64, Phloss_60, Fulbright_60, Duplicity_60, Pipsqueaks_63, Carcharodon_62, Parmesanjohn_62, Magsby_61, Gex_63
- Track 12 : Silvy_63, Aggie_58
- Track 13 : Bosection6_61, Charlie_59, Tapioca_60, Andies_56
- Track 14 : Butters_58, Rubeelu_58
- Track 15 : Scitech_57
- Track 16 : Tortellini_68
- Track 17 : ThulaThula_66
- Track 18 : Purky_69
- Track 19 : MooMoo_77

Summary of Final Annotations (See graph section above for start numbers):

The start number called the most often in the published annotations is 26, it was called in 21 of the 36 non-draft genes in the pham.

Genes that call this "Most Annotated" start:

- Aggie_58, Andies_56, Bosection6_61, Carcharodon_62, Charlie_59, Chewbacca_65, ChickenDinner_86, DocMcStuffins_79, Duplicity_60, FirstPlacePfu_64, Fulbright_60, Gex_63, Magsby_61, Melville_67, MulchSalad_80, Parmesanjohn_62, Philonius_62, Phloss_60, Piper2020_86, Pipsqueaks_63, Schnauzer_63, Silvafighter_64, Silvy_63, SkinnyPete_59, Smurph_62, Tapioca_60,

Xerxes_62,

Genes that have the "Most Annotated" start but do not call it:

-

Genes that do not have the "Most Annotated" start:

- Awesomesauce_83, Butters_58, Dori_75, Frankie_80, LilSpotty_79, Mao1_77, Misha28_82, MooMoo_77, Phalconet_67, PhesterPhotato_72, Purky_69, Rubeelu_58, Sbash_70, Scitech_57, Sejanus_78, ThulaThula_66, TootsiePop_82, Tortellini_68,

Summary by start number:

Start 20:

- Found in 4 of 45 (8.9%) of genes in pham
- Manual Annotations of this start: 4 of 36
- Called 100.0% of time when present
- Phage (with cluster) where this start called: Dori_75 (AD), Frankie_80 (F1), Sejanus_78 (AD), Tortellini_68 (P2),

Start 21:

- Found in 5 of 45 (11.1%) of genes in pham
- Manual Annotations of this start: 1 of 36
- Called 40.0% of time when present
- Phage (with cluster) where this start called: Phalconet_67 (F1), PhesterPhotato_72 (F1),

Start 23:

- Found in 2 of 45 (4.4%) of genes in pham
- Manual Annotations of this start: 2 of 36
- Called 100.0% of time when present
- Phage (with cluster) where this start called: Butters_58 (N), Rubeelu_58 (N),

Start 24:

- Found in 1 of 45 (2.2%) of genes in pham
- Manual Annotations of this start: 1 of 36
- Called 100.0% of time when present
- Phage (with cluster) where this start called: MooMoo_77 (singleton),

Start 26:

- Found in 27 of 45 (60.0%) of genes in pham
- Manual Annotations of this start: 21 of 36
- Called 100.0% of time when present
- Phage (with cluster) where this start called: Aggie_58 (N), Andies_56 (N), Bosection6_61 (N), Carcharodon_62 (N), Charlie_59 (N), Chewbacca_65 (N), ChickenDinner_86 (F1), DocMcStuffins_79 (F1), Duplicity_60 (N), FirstPlacePfu_64 (P1), Fulbright_60 (N), Gex_63 (N), Magsby_61 (N), Melville_67 (N), MulchSalad_80 (F), Parmesanjohn_62 (N), Philonius_62 (N), Phloss_60 (N), Piper2020_86 (F1), Pipsqueaks_63 (N), Schnauzer_63 (N), Silvafighter_64 (N), Silvy_63 (N), SkinnyPete_59 (N), Smurph_62 (N), Tapioca_60 (N), Xerxes_62 (N),

Start 27:

- Found in 8 of 45 (17.8%) of genes in pham

- Manual Annotations of this start: 3 of 36
- Called 62.5% of time when present
- Phage (with cluster) where this start called: Mao1_77 (AD), Purky_69 (P6), Sbash_70 (I2), Scitech_57 (N), ThulaThula_66 (P5),

Start 41:

- Found in 4 of 45 (8.9%) of genes in pham
- Manual Annotations of this start: 4 of 36
- Called 100.0% of time when present
- Phage (with cluster) where this start called: Awesomesauce_83 (F1), LilSpotty_79 (singleton), Misha28_82 (F1), TootsiePop_82 (F1),

Summary by clusters:

There are 10 clusters represented in this pham: P2, F1, singleton, P1, P6, AD, F, P5, N, I2,

Info for manual annotations of cluster AD:

- Start number 20 was manually annotated 2 times for cluster AD.

Info for manual annotations of cluster F1:

- Start number 20 was manually annotated 1 time for cluster F1.
- Start number 21 was manually annotated 1 time for cluster F1.
- Start number 26 was manually annotated 1 time for cluster F1.
- Start number 41 was manually annotated 3 times for cluster F1.

Info for manual annotations of cluster I2:

- Start number 27 was manually annotated 1 time for cluster I2.

Info for manual annotations of cluster N:

- Start number 23 was manually annotated 2 times for cluster N.
- Start number 26 was manually annotated 19 times for cluster N.

Info for manual annotations of cluster P1:

- Start number 26 was manually annotated 1 time for cluster P1.

Info for manual annotations of cluster P2:

- Start number 20 was manually annotated 1 time for cluster P2.

Info for manual annotations of cluster P5:

- Start number 27 was manually annotated 1 time for cluster P5.

Info for manual annotations of cluster P6:

- Start number 27 was manually annotated 1 time for cluster P6.

Gene Information:

Gene: Aggie_58 Start: 39856, Stop: 39999, Start Num: 26

Candidate Starts for Aggie_58:

(3, 39541), (5, 39550), (9, 39706), (Start: 26 @39856 has 21 MA's), (37, 39952),

Gene: Andies_56 Start: 39301, Stop: 39444, Start Num: 26

Candidate Starts for Andies_56:

(9, 39148), (Start: 26 @39301 has 21 MA's), (37, 39397),

Gene: Awesomesauce_83 Start: 50467, Stop: 50625, Start Num: 41

Candidate Starts for Awesomesauce_83:

(28, 50251), (35, 50314), (40, 50371), (Start: 41 @50467 has 4 MA's), (42, 50476),

Gene: Bosection6_61 Start: 38905, Stop: 39048, Start Num: 26

Candidate Starts for Bosection6_61:

(9, 38752), (Start: 26 @38905 has 21 MA's), (37, 39001),

Gene: Butters_58 Start: 37292, Stop: 37432, Start Num: 23

Candidate Starts for Butters_58:

(19, 37250), (Start: 21 @37271 has 1 MA's), (Start: 23 @37292 has 2 MA's), (30, 37322),

Gene: Carcharodon_62 Start: 39203, Stop: 39346, Start Num: 26

Candidate Starts for Carcharodon_62:

(3, 38885), (5, 38894), (9, 39050), (Start: 26 @39203 has 21 MA's), (37, 39299),

Gene: Charlie_59 Start: 38529, Stop: 38672, Start Num: 26

Candidate Starts for Charlie_59:

(9, 38376), (Start: 26 @38529 has 21 MA's), (37, 38625),

Gene: Chewbacca_65 Start: 39098, Stop: 39241, Start Num: 26

Candidate Starts for Chewbacca_65:

(3, 38780), (5, 38789), (9, 38945), (Start: 26 @39098 has 21 MA's), (37, 39194),

Gene: ChickenDinner_86 Start: 50246, Stop: 50389, Start Num: 26

Candidate Starts for ChickenDinner_86:

(6, 49937), (Start: 26 @50246 has 21 MA's), (37, 50342),

Gene: DocMcStuffins_79 Start: 51876, Stop: 52019, Start Num: 26

Candidate Starts for DocMcStuffins_79:

(6, 51567), (Start: 26 @51876 has 21 MA's), (37, 51972),

Gene: Dori_75 Start: 56198, Stop: 56362, Start Num: 20

Candidate Starts for Dori_75:

(1, 55886), (2, 55919), (4, 55940), (8, 56090), (Start: 20 @56198 has 4 MA's),

Gene: Duplicity_60 Start: 38460, Stop: 38603, Start Num: 26

Candidate Starts for Duplicity_60:

(3, 38142), (5, 38151), (9, 38307), (Start: 26 @38460 has 21 MA's), (37, 38556),

Gene: FirstPlacePfu_64 Start: 39003, Stop: 39146, Start Num: 26

Candidate Starts for FirstPlacePfu_64:

(3, 38685), (5, 38694), (9, 38850), (Start: 26 @39003 has 21 MA's), (37, 39099),

Gene: Frankie_80 Start: 47540, Stop: 47701, Start Num: 20

Candidate Starts for Frankie_80:

(Start: 20 @47540 has 4 MA's),

Gene: Fulbright_60 Start: 37897, Stop: 38040, Start Num: 26
Candidate Starts for Fulbright_60:
(3, 37579), (5, 37588), (9, 37744), (Start: 26 @37897 has 21 MA's), (37, 37993),

Gene: Gex_63 Start: 39219, Stop: 39362, Start Num: 26
Candidate Starts for Gex_63:
(3, 38901), (5, 38910), (9, 39066), (Start: 26 @39219 has 21 MA's), (37, 39315),

Gene: LilSpotty_79 Start: 45907, Stop: 46065, Start Num: 41
Candidate Starts for LilSpotty_79:
(28, 45691), (35, 45754), (40, 45811), (Start: 41 @45907 has 4 MA's), (42, 45916),

Gene: Magsby_61 Start: 39165, Stop: 39308, Start Num: 26
Candidate Starts for Magsby_61:
(3, 38847), (5, 38856), (9, 39012), (Start: 26 @39165 has 21 MA's), (37, 39261),

Gene: Mao1_77 Start: 54531, Stop: 54680, Start Num: 27
Candidate Starts for Mao1_77:
(10, 54357), (Start: 21 @54486 has 1 MA's), (Start: 27 @54531 has 3 MA's), (32, 54588), (34, 54597),
(37, 54627),

Gene: Melville_67 Start: 38774, Stop: 38917, Start Num: 26
Candidate Starts for Melville_67:
(3, 38456), (5, 38465), (9, 38621), (Start: 26 @38774 has 21 MA's), (37, 38870),

Gene: Misha28_82 Start: 51166, Stop: 51324, Start Num: 41
Candidate Starts for Misha28_82:
(28, 50950), (35, 51013), (40, 51070), (Start: 41 @51166 has 4 MA's), (42, 51175),

Gene: MooMoo_77 Start: 47555, Stop: 47719, Start Num: 24
Candidate Starts for MooMoo_77:
(Start: 24 @47555 has 1 MA's), (Start: 27 @47573 has 3 MA's), (37, 47669),

Gene: MulchSalad_80 Start: 48222, Stop: 48365, Start Num: 26
Candidate Starts for MulchSalad_80:
(3, 47892), (5, 47901), (9, 48069), (Start: 26 @48222 has 21 MA's), (37, 48318),

Gene: Parmesanjohn_62 Start: 39223, Stop: 39366, Start Num: 26
Candidate Starts for Parmesanjohn_62:
(3, 38905), (5, 38914), (9, 39070), (Start: 26 @39223 has 21 MA's), (37, 39319),

Gene: Phalconet_67 Start: 43045, Stop: 43245, Start Num: 21
Candidate Starts for Phalconet_67:
(Start: 21 @43045 has 1 MA's), (25, 43081), (Start: 27 @43087 has 3 MA's), (29, 43099), (30, 43102),
(33, 43150), (36, 43171), (39, 43192),

Gene: PhesterPhotato_72 Start: 44766, Stop: 44963, Start Num: 21
Candidate Starts for PhesterPhotato_72:
(Start: 21 @44766 has 1 MA's), (25, 44802), (Start: 27 @44808 has 3 MA's), (29, 44820), (30, 44823),
(33, 44871), (36, 44892), (39, 44913),

Gene: Philonius_62 Start: 39388, Stop: 39531, Start Num: 26
Candidate Starts for Philonius_62:

(3, 39070), (5, 39079), (9, 39235), (Start: 26 @39388 has 21 MA's), (37, 39484),

Gene: Phloss_60 Start: 38630, Stop: 38773, Start Num: 26

Candidate Starts for Phloss_60:

(3, 38312), (5, 38321), (9, 38477), (Start: 26 @38630 has 21 MA's), (37, 38726),

Gene: Piper2020_86 Start: 51987, Stop: 52130, Start Num: 26

Candidate Starts for Piper2020_86:

(9, 51834), (Start: 26 @51987 has 21 MA's), (37, 52083),

Gene: Pipsqueaks_63 Start: 39201, Stop: 39344, Start Num: 26

Candidate Starts for Pipsqueaks_63:

(3, 38883), (5, 38892), (9, 39048), (Start: 26 @39201 has 21 MA's), (37, 39297),

Gene: Purky_69 Start: 44331, Stop: 44486, Start Num: 27

Candidate Starts for Purky_69:

(16, 44220), (17, 44238), (Start: 27 @44331 has 3 MA's), (37, 44427),

Gene: Rubeelu_58 Start: 37292, Stop: 37432, Start Num: 23

Candidate Starts for Rubeelu_58:

(19, 37250), (Start: 21 @37271 has 1 MA's), (Start: 23 @37292 has 2 MA's), (30, 37322),

Gene: Sbash_70 Start: 46782, Stop: 46940, Start Num: 27

Candidate Starts for Sbash_70:

(Start: 27 @46782 has 3 MA's), (31, 46836), (38, 46884),

Gene: Schnauzer_63 Start: 39223, Stop: 39366, Start Num: 26

Candidate Starts for Schnauzer_63:

(3, 38905), (5, 38914), (9, 39070), (Start: 26 @39223 has 21 MA's), (37, 39319),

Gene: Scitech_57 Start: 38626, Stop: 38769, Start Num: 27

Candidate Starts for Scitech_57:

(7, 38389), (11, 38461), (13, 38491), (22, 38599), (Start: 27 @38626 has 3 MA's), (37, 38722),

Gene: Sejanus_78 Start: 56346, Stop: 56510, Start Num: 20

Candidate Starts for Sejanus_78:

(12, 56262), (14, 56274), (18, 56319), (Start: 20 @56346 has 4 MA's),

Gene: Silvafighter_64 Start: 38766, Stop: 38909, Start Num: 26

Candidate Starts for Silvafighter_64:

(3, 38448), (5, 38457), (9, 38613), (Start: 26 @38766 has 21 MA's), (37, 38862),

Gene: Silvy_63 Start: 39856, Stop: 39999, Start Num: 26

Candidate Starts for Silvy_63:

(3, 39541), (5, 39550), (9, 39706), (Start: 26 @39856 has 21 MA's), (37, 39952),

Gene: SkinnyPete_59 Start: 38970, Stop: 39113, Start Num: 26

Candidate Starts for SkinnyPete_59:

(3, 38652), (5, 38661), (9, 38817), (Start: 26 @38970 has 21 MA's), (37, 39066),

Gene: Smurph_62 Start: 39223, Stop: 39366, Start Num: 26

Candidate Starts for Smurph_62:

(3, 38905), (5, 38914), (9, 39070), (Start: 26 @39223 has 21 MA's), (37, 39319),

Gene: Tapioca_60 Start: 39740, Stop: 39883, Start Num: 26

Candidate Starts for Tapioca_60:

(9, 39587), (Start: 26 @39740 has 21 MA's), (37, 39836),

Gene: ThulaThula_66 Start: 44182, Stop: 44340, Start Num: 27

Candidate Starts for ThulaThula_66:

(15, 44086), (Start: 27 @44182 has 3 MA's), (31, 44239), (38, 44287),

Gene: TootsiePop_82 Start: 51166, Stop: 51324, Start Num: 41

Candidate Starts for TootsiePop_82:

(28, 50950), (35, 51013), (40, 51070), (Start: 41 @51166 has 4 MA's), (42, 51175),

Gene: Tortellini_68 Start: 45349, Stop: 45510, Start Num: 20

Candidate Starts for Tortellini_68:

(Start: 20 @45349 has 4 MA's),

Gene: Xerxes_62 Start: 39220, Stop: 39363, Start Num: 26

Candidate Starts for Xerxes_62:

(3, 38902), (5, 38911), (9, 39067), (Start: 26 @39220 has 21 MA's), (37, 39316),