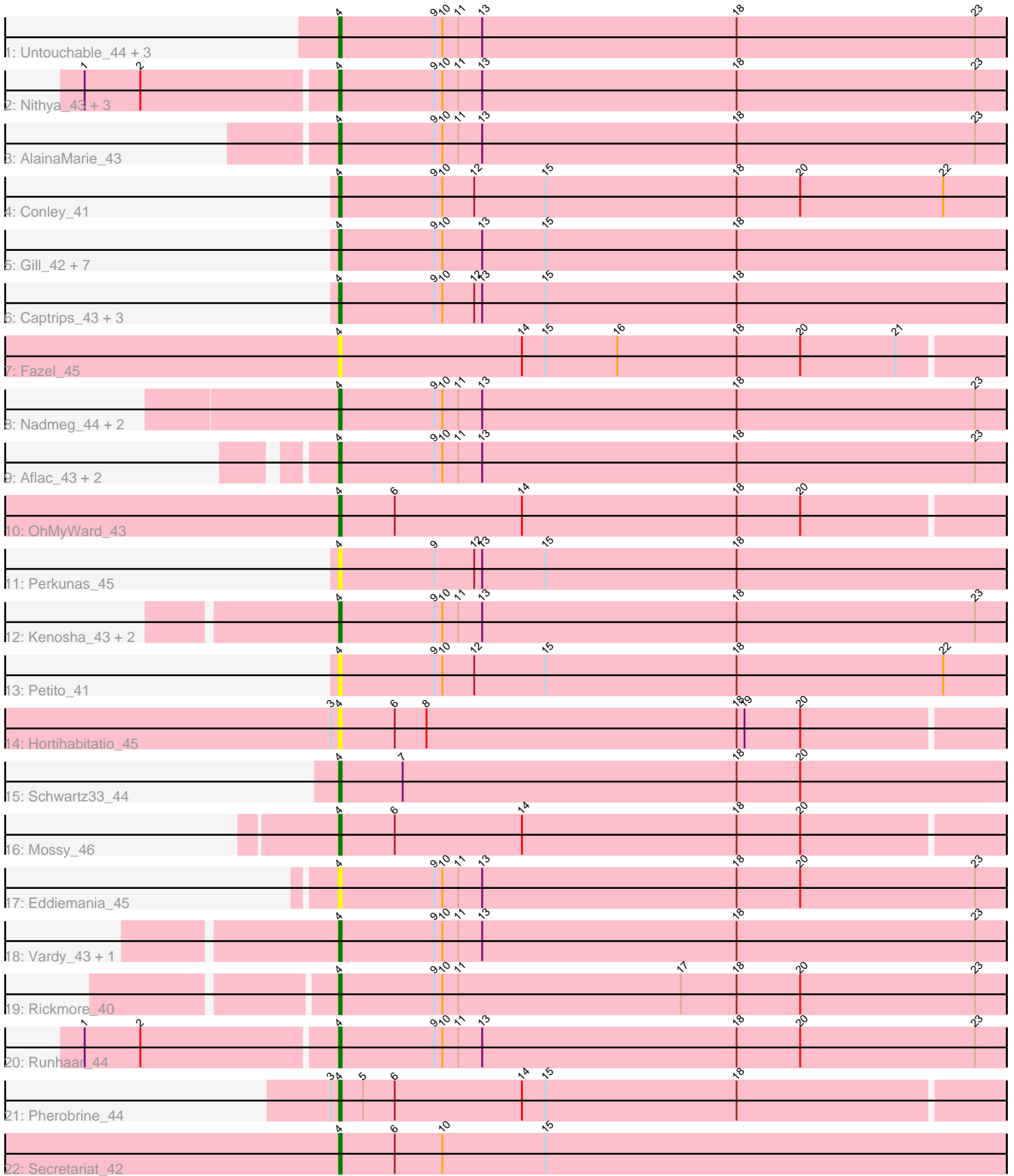


# Pham 154803



Note: Tracks are now grouped by subcluster and scaled. Switching in subcluster is indicated by changes in track color. Track scale is now set by default to display the region 30 bp upstream of start 1 to 30 bp downstream of the last possible start. If this default region is judged to be packed too tightly with annotated starts, the track will be further scaled to only show that region of the ORF with annotated starts. This action will be indicated by adding "Zoomed" to the title. For starts, yellow indicates the location of called starts comprised solely of Glimmer/GeneMark auto-annotations, green indicates the location of called starts with at least 1 manual gene annotation.

## Pham 154803 Report

This analysis was run 04/12/24 on database version 558.

Pham number 154803 has 45 members, 11 are drafts.

Phages represented in each track:

- Track 1 : Untouchable\_44, Phepper\_44, Zeph\_48, Hydrus\_45
- Track 2 : Nithya\_43, Duffington\_42, Chikenjars\_43, EndAve\_44
- Track 3 : AlainaMarie\_43
- Track 4 : Conley\_41
- Track 5 : Gill\_42, Capybara\_42, Gravy\_41, Tanis\_42, Magel\_43, Odesza\_41, Roney\_42, Kerry\_41
- Track 6 : Captrips\_43, Artorias\_41, FortCran\_45, Avazak\_42
- Track 7 : Fazel\_45
- Track 8 : Nadmeg\_44, Madvan\_43, Crocheter\_43
- Track 9 : Aflac\_43, OlgasClover\_44, TenaciousP\_47
- Track 10 : OhMyWard\_43
- Track 11 : Perkunas\_45
- Track 12 : Kenosha\_43, Figliar\_43, Jodelie19\_44
- Track 13 : Petite\_41
- Track 14 : Hortihabitatio\_45
- Track 15 : Schwartz33\_44
- Track 16 : Mossy\_46
- Track 17 : Eddiemania\_45
- Track 18 : Vardy\_43, Burley\_43
- Track 19 : Rickmore\_40
- Track 20 : Runhaar\_44
- Track 21 : Pherobrine\_44
- Track 22 : Secretariat\_42

### ***Summary of Final Annotations (See graph section above for start numbers):***

The start number called the most often in the published annotations is 4, it was called in 34 of the 34 non-draft genes in the pham.

Genes that call this "Most Annotated" start:

- Aflac\_43, AlainaMarie\_43, Artorias\_41, Avazak\_42, Burley\_43, Captrips\_43, Capybara\_42, Chikenjars\_43, Conley\_41, Crocheter\_43, Duffington\_42, Eddiemania\_45, EndAve\_44, Fazel\_45, Figliar\_43, FortCran\_45, Gill\_42, Gravy\_41, Hortihabitatio\_45, Hydrus\_45, Jodelie19\_44, Kenosha\_43, Kerry\_41, Madvan\_43,

Magel\_43, Mossy\_46, Nadmeg\_44, Nithya\_43, Odesza\_41, OhMyWard\_43, OlgasClover\_44, Perkunas\_45, Petito\_41, Phepper\_44, Pherobrine\_44, Rickmore\_40, Roney\_42, Runhaar\_44, Schwartz33\_44, Secretariat\_42, Tanis\_42, TenaciousP\_47, Untouchable\_44, Vardy\_43, Zeph\_48,

Genes that have the "Most Annotated" start but do not call it:

- 

Genes that do not have the "Most Annotated" start:

- 

### Summary by start number:

Start 4:

- Found in 45 of 45 ( 100.0% ) of genes in pham
- Manual Annotations of this start: 34 of 34
- Called 100.0% of time when present
- Phage (with cluster) where this start called: Aflac\_43 (DJ), AlainaMarie\_43 (DJ), Artorias\_41 (DJ), Avazak\_42 (DJ), Burley\_43 (DJ), Captrips\_43 (DJ), Copybara\_42 (DJ), Chikenjars\_43 (DJ), Conley\_41 (DJ), Crocheter\_43 (DJ), Duffington\_42 (DJ), Eddiemania\_45 (DJ), EndAve\_44 (DJ), Fazel\_45 (DJ), Figliar\_43 (DJ), FortCran\_45 (DJ), Gill\_42 (DJ), Gravy\_41 (DJ), Hortihabitatio\_45 (DJ), Hydrus\_45 (DJ), Jodelie19\_44 (DJ), Kenosha\_43 (DJ), Kerry\_41 (DJ), Madvan\_43 (DJ), Magel\_43 (DJ), Mossy\_46 (DJ), Nadmeg\_44 (DJ), Nithya\_43 (DJ), Odesza\_41 (DJ), OhMyWard\_43 (DJ), OlgasClover\_44 (DJ), Perkunas\_45 (DJ), Petito\_41 (DJ), Phepper\_44 (DJ), Pherobrine\_44 (DJ), Rickmore\_40 (DJ), Roney\_42 (DJ), Runhaar\_44 (DJ), Schwartz33\_44 (DJ), Secretariat\_42 (DJ), Tanis\_42 (DJ), TenaciousP\_47 (DJ), Untouchable\_44 (DJ), Vardy\_43 (DJ), Zeph\_48 (DJ),

### Summary by clusters:

There is one cluster represented in this pham: DJ

Info for manual annotations of cluster DJ:

- Start number 4 was manually annotated 34 times for cluster DJ.

### Gene Information:

Gene: Aflac\_43 Start: 33707, Stop: 33958, Start Num: 4

Candidate Starts for Aflac\_43:

(Start: 4 @33707 has 34 MA's), (9, 33743), (10, 33746), (11, 33752), (13, 33761), (18, 33857), (23, 33947),

Gene: AlainaMarie\_43 Start: 33692, Stop: 33943, Start Num: 4

Candidate Starts for AlainaMarie\_43:

(Start: 4 @33692 has 34 MA's), (9, 33728), (10, 33731), (11, 33737), (13, 33746), (18, 33842), (23, 33932),

Gene: Artorias\_41 Start: 31178, Stop: 31429, Start Num: 4

Candidate Starts for Artorias\_41:

(Start: 4 @31178 has 34 MA's), (9, 31214), (10, 31217), (12, 31229), (13, 31232), (15, 31256), (18, 31328),

Gene: Avazak\_42 Start: 31543, Stop: 31794, Start Num: 4

Candidate Starts for Avazak\_42:

(Start: 4 @31543 has 34 MA's), (9, 31579), (10, 31582), (12, 31594), (13, 31597), (15, 31621), (18, 31693),

Gene: Burley\_43 Start: 33465, Stop: 33716, Start Num: 4

Candidate Starts for Burley\_43:

(Start: 4 @33465 has 34 MA's), (9, 33501), (10, 33504), (11, 33510), (13, 33519), (18, 33615), (23, 33705),

Gene: Captrips\_43 Start: 31216, Stop: 31467, Start Num: 4

Candidate Starts for Captrips\_43:

(Start: 4 @31216 has 34 MA's), (9, 31252), (10, 31255), (12, 31267), (13, 31270), (15, 31294), (18, 31366),

Gene: Capybara\_42 Start: 31605, Stop: 31856, Start Num: 4

Candidate Starts for Capybara\_42:

(Start: 4 @31605 has 34 MA's), (9, 31641), (10, 31644), (13, 31659), (15, 31683), (18, 31755),

Gene: Chikenjars\_43 Start: 33703, Stop: 33954, Start Num: 4

Candidate Starts for Chikenjars\_43:

(1, 33610), (2, 33631), (Start: 4 @33703 has 34 MA's), (9, 33739), (10, 33742), (11, 33748), (13, 33757), (18, 33853), (23, 33943),

Gene: Conley\_41 Start: 32155, Stop: 32406, Start Num: 4

Candidate Starts for Conley\_41:

(Start: 4 @32155 has 34 MA's), (9, 32191), (10, 32194), (12, 32206), (15, 32233), (18, 32305), (20, 32329), (22, 32383),

Gene: Crocheter\_43 Start: 33868, Stop: 34119, Start Num: 4

Candidate Starts for Crocheter\_43:

(Start: 4 @33868 has 34 MA's), (9, 33904), (10, 33907), (11, 33913), (13, 33922), (18, 34018), (23, 34108),

Gene: Duffington\_42 Start: 33365, Stop: 33616, Start Num: 4

Candidate Starts for Duffington\_42:

(1, 33272), (2, 33293), (Start: 4 @33365 has 34 MA's), (9, 33401), (10, 33404), (11, 33410), (13, 33419), (18, 33515), (23, 33605),

Gene: Eddiemania\_45 Start: 34627, Stop: 34878, Start Num: 4

Candidate Starts for Eddiemania\_45:

(Start: 4 @34627 has 34 MA's), (9, 34663), (10, 34666), (11, 34672), (13, 34681), (18, 34777), (20, 34801), (23, 34867),

Gene: EndAve\_44 Start: 33872, Stop: 34123, Start Num: 4

Candidate Starts for EndAve\_44:

(1, 33779), (2, 33800), (Start: 4 @33872 has 34 MA's), (9, 33908), (10, 33911), (11, 33917), (13, 33926), (18, 34022), (23, 34112),

Gene: Fazel\_45 Start: 33160, Stop: 33408, Start Num: 4

Candidate Starts for Fazel\_45:

(Start: 4 @33160 has 34 MA's), (14, 33229), (15, 33238), (16, 33265), (18, 33310), (20, 33334), (21, 33370),

Gene: Figliar\_43 Start: 33767, Stop: 34018, Start Num: 4

Candidate Starts for Figliar\_43:

(Start: 4 @33767 has 34 MA's), (9, 33803), (10, 33806), (11, 33812), (13, 33821), (18, 33917), (23, 34007),

Gene: FortCran\_45 Start: 31178, Stop: 31429, Start Num: 4

Candidate Starts for FortCran\_45:

(Start: 4 @31178 has 34 MA's), (9, 31214), (10, 31217), (12, 31229), (13, 31232), (15, 31256), (18, 31328),

Gene: Gill\_42 Start: 31622, Stop: 31873, Start Num: 4

Candidate Starts for Gill\_42:

(Start: 4 @31622 has 34 MA's), (9, 31658), (10, 31661), (13, 31676), (15, 31700), (18, 31772),

Gene: Gravy\_41 Start: 31295, Stop: 31546, Start Num: 4

Candidate Starts for Gravy\_41:

(Start: 4 @31295 has 34 MA's), (9, 31331), (10, 31334), (13, 31349), (15, 31373), (18, 31445),

Gene: Hortihabitatio\_45 Start: 33607, Stop: 33855, Start Num: 4

Candidate Starts for Hortihabitatio\_45:

(3, 33604), (Start: 4 @33607 has 34 MA's), (6, 33628), (8, 33640), (18, 33757), (19, 33760), (20, 33781),

Gene: Hydrus\_45 Start: 34640, Stop: 34891, Start Num: 4

Candidate Starts for Hydrus\_45:

(Start: 4 @34640 has 34 MA's), (9, 34676), (10, 34679), (11, 34685), (13, 34694), (18, 34790), (23, 34880),

Gene: Jodelie19\_44 Start: 35222, Stop: 35473, Start Num: 4

Candidate Starts for Jodelie19\_44:

(Start: 4 @35222 has 34 MA's), (9, 35258), (10, 35261), (11, 35267), (13, 35276), (18, 35372), (23, 35462),

Gene: Kenosha\_43 Start: 34275, Stop: 34526, Start Num: 4

Candidate Starts for Kenosha\_43:

(Start: 4 @34275 has 34 MA's), (9, 34311), (10, 34314), (11, 34320), (13, 34329), (18, 34425), (23, 34515),

Gene: Kerry\_41 Start: 31295, Stop: 31546, Start Num: 4

Candidate Starts for Kerry\_41:

(Start: 4 @31295 has 34 MA's), (9, 31331), (10, 31334), (13, 31349), (15, 31373), (18, 31445),

Gene: Madvan\_43 Start: 33509, Stop: 33760, Start Num: 4

Candidate Starts for Madvan\_43:

(Start: 4 @33509 has 34 MA's), (9, 33545), (10, 33548), (11, 33554), (13, 33563), (18, 33659), (23, 33749),

Gene: Magel\_43 Start: 31526, Stop: 31777, Start Num: 4

Candidate Starts for Magel\_43:

(Start: 4 @31526 has 34 MA's), (9, 31562), (10, 31565), (13, 31580), (15, 31604), (18, 31676),

Gene: Mossy\_46 Start: 35625, Stop: 35873, Start Num: 4

Candidate Starts for Mossy\_46:

(Start: 4 @35625 has 34 MA's), (6, 35646), (14, 35694), (18, 35775), (20, 35799),

Gene: Nadmeg\_44 Start: 34941, Stop: 35192, Start Num: 4

Candidate Starts for Nadmeg\_44:

(Start: 4 @34941 has 34 MA's), (9, 34977), (10, 34980), (11, 34986), (13, 34995), (18, 35091), (23, 35181),

Gene: Nithya\_43 Start: 33693, Stop: 33944, Start Num: 4

Candidate Starts for Nithya\_43:

(1, 33600), (2, 33621), (Start: 4 @33693 has 34 MA's), (9, 33729), (10, 33732), (11, 33738), (13, 33747), (18, 33843), (23, 33933),

Gene: Odesza\_41 Start: 31296, Stop: 31547, Start Num: 4

Candidate Starts for Odesza\_41:

(Start: 4 @31296 has 34 MA's), (9, 31332), (10, 31335), (13, 31350), (15, 31374), (18, 31446),

Gene: OhMyWard\_43 Start: 34719, Stop: 34967, Start Num: 4

Candidate Starts for OhMyWard\_43:

(Start: 4 @34719 has 34 MA's), (6, 34740), (14, 34788), (18, 34869), (20, 34893),

Gene: OlgasClover\_44 Start: 34751, Stop: 35002, Start Num: 4

Candidate Starts for OlgasClover\_44:

(Start: 4 @34751 has 34 MA's), (9, 34787), (10, 34790), (11, 34796), (13, 34805), (18, 34901), (23, 34991),

Gene: Perkunas\_45 Start: 31586, Stop: 31837, Start Num: 4

Candidate Starts for Perkunas\_45:

(Start: 4 @31586 has 34 MA's), (9, 31622), (12, 31637), (13, 31640), (15, 31664), (18, 31736),

Gene: Petite\_41 Start: 32690, Stop: 32941, Start Num: 4

Candidate Starts for Petite\_41:

(Start: 4 @32690 has 34 MA's), (9, 32726), (10, 32729), (12, 32741), (15, 32768), (18, 32840), (22, 32918),

Gene: Phepper\_44 Start: 33762, Stop: 34013, Start Num: 4

Candidate Starts for Phepper\_44:

(Start: 4 @33762 has 34 MA's), (9, 33798), (10, 33801), (11, 33807), (13, 33816), (18, 33912), (23, 34002),

Gene: Pherobrine\_44 Start: 34201, Stop: 34449, Start Num: 4

Candidate Starts for Pherobrine\_44:

(3, 34198), (Start: 4 @34201 has 34 MA's), (5, 34210), (6, 34222), (14, 34270), (15, 34279), (18, 34351),

Gene: Rickmore\_40 Start: 31557, Stop: 31808, Start Num: 4

Candidate Starts for Rickmore\_40:

(Start: 4 @31557 has 34 MA's), (9, 31593), (10, 31596), (11, 31602), (17, 31686), (18, 31707), (20, 31731), (23, 31797),

Gene: Roney\_42 Start: 31617, Stop: 31868, Start Num: 4  
Candidate Starts for Roney\_42:  
(Start: 4 @31617 has 34 MA's), (9, 31653), (10, 31656), (13, 31671), (15, 31695), (18, 31767),

Gene: Runhaar\_44 Start: 33756, Stop: 34007, Start Num: 4  
Candidate Starts for Runhaar\_44:  
(1, 33663), (2, 33684), (Start: 4 @33756 has 34 MA's), (9, 33792), (10, 33795), (11, 33801), (13, 33810), (18, 33906), (20, 33930), (23, 33996),

Gene: Schwartz33\_44 Start: 34023, Stop: 34274, Start Num: 4  
Candidate Starts for Schwartz33\_44:  
(Start: 4 @34023 has 34 MA's), (7, 34047), (18, 34173), (20, 34197),

Gene: Secretariat\_42 Start: 32934, Stop: 33185, Start Num: 4  
Candidate Starts for Secretariat\_42:  
(Start: 4 @32934 has 34 MA's), (6, 32955), (10, 32973), (15, 33012),

Gene: Tanis\_42 Start: 31468, Stop: 31719, Start Num: 4  
Candidate Starts for Tanis\_42:  
(Start: 4 @31468 has 34 MA's), (9, 31504), (10, 31507), (13, 31522), (15, 31546), (18, 31618),

Gene: TenaciousP\_47 Start: 35132, Stop: 35383, Start Num: 4  
Candidate Starts for TenaciousP\_47:  
(Start: 4 @35132 has 34 MA's), (9, 35168), (10, 35171), (11, 35177), (13, 35186), (18, 35282), (23, 35372),

Gene: Untouchable\_44 Start: 34122, Stop: 34373, Start Num: 4  
Candidate Starts for Untouchable\_44:  
(Start: 4 @34122 has 34 MA's), (9, 34158), (10, 34161), (11, 34167), (13, 34176), (18, 34272), (23, 34362),

Gene: Vardy\_43 Start: 33466, Stop: 33717, Start Num: 4  
Candidate Starts for Vardy\_43:  
(Start: 4 @33466 has 34 MA's), (9, 33502), (10, 33505), (11, 33511), (13, 33520), (18, 33616), (23, 33706),

Gene: Zeph\_48 Start: 34620, Stop: 34871, Start Num: 4  
Candidate Starts for Zeph\_48:  
(Start: 4 @34620 has 34 MA's), (9, 34656), (10, 34659), (11, 34665), (13, 34674), (18, 34770), (23, 34860),