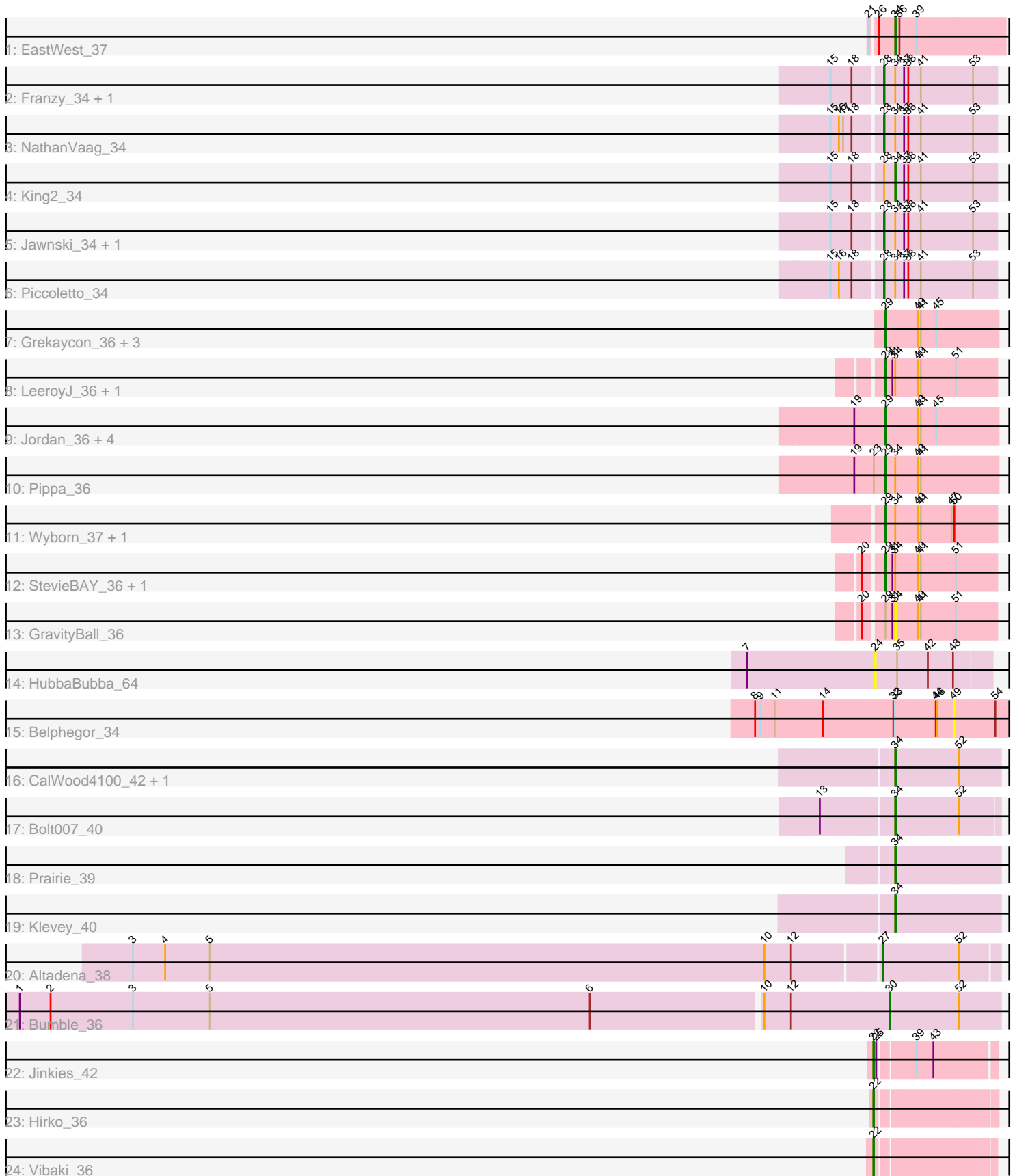


Pham 154857



Note: Tracks are now grouped by subcluster and scaled. Switching in subcluster is indicated by changes in track color. Track scale is now set by default to display the region 30 bp upstream of start 1 to 30 bp downstream of the last possible start. If this default region is judged to be packed too tightly with annotated starts, the track will be further scaled to only show that region of the ORF with annotated starts. This action will be indicated by adding "Zoomed" to the title. For starts, yellow indicates the location of called starts comprised solely of Glimmer/GeneMark auto-annotations, green indicates the location of called starts with at least 1 manual gene annotation.

Pham 154857 Report

This analysis was run 04/12/24 on database version 558.

Pham number 154857 has 37 members, 4 are drafts.

Phages represented in each track:

- Track 1 : EastWest_37
- Track 2 : Franzy_34, Brent_34
- Track 3 : NathanVaag_34
- Track 4 : King2_34
- Track 5 : Jawnski_34, Beans_34
- Track 6 : Piccoletto_34
- Track 7 : Grekaycon_36, BossLady_36, Martha_36, TaeYoung_36
- Track 8 : LeeroyJ_36, Timinator_36
- Track 9 : Jordan_36, Zartrosa_36, Shade_36, Sonny_36, JKerns_36
- Track 10 : Pippa_36
- Track 11 : Wyborn_37, Sicarius2_37
- Track 12 : StevieBAY_36, BarretLemon_36
- Track 13 : GravityBall_36
- Track 14 : HubbaBubba_64
- Track 15 : Belphegor_34
- Track 16 : CalWood4100_42, Lilmac1015_42
- Track 17 : Bolt007_40
- Track 18 : Prairie_39
- Track 19 : Klevey_40
- Track 20 : Altadena_38
- Track 21 : Bumble_36
- Track 22 : Jinkies_42
- Track 23 : Hirko_36
- Track 24 : Vibaki_36

Summary of Final Annotations (See graph section above for start numbers):

The start number called the most often in the published annotations is 29, it was called in 16 of the 33 non-draft genes in the pham.

Genes that call this "Most Annotated" start:

- BarretLemon_36, BossLady_36, Grekaycon_36, JKerns_36, Jordan_36, LeeroyJ_36, Martha_36, Pippa_36, Shade_36, Sicarius2_37, Sonny_36, StevieBAY_36, TaeYoung_36, Timinator_36, Wyborn_37, Zartrosa_36,

Genes that have the "Most Annotated" start but do not call it:

- GravityBall_36,

Genes that do not have the "Most Annotated" start:

- Altadena_38, Beans_34, Belphegor_34, Bolt007_40, Brent_34, Bumble_36, CalWood4100_42, EastWest_37, Franzy_34, Hirko_36, HubbaBubba_64, Jawnski_34, Jinkies_42, King2_34, Klevey_40, Lilmac1015_42, NathanVaag_34, Piccoletto_34, Prairie_39, Vibaki_36,

Summary by start number:

Start 22:

- Found in 3 of 37 (8.1%) of genes in pham
- Manual Annotations of this start: 3 of 33
- Called 100.0% of time when present
- Phage (with cluster) where this start called: Hirko_36 (FL), Jinkies_42 (FL), Vibaki_36 (FL),

Start 24:

- Found in 1 of 37 (2.7%) of genes in pham
- No Manual Annotations of this start.
- Called 100.0% of time when present
- Phage (with cluster) where this start called: HubbaBubba_64 (CR4),

Start 27:

- Found in 1 of 37 (2.7%) of genes in pham
- Manual Annotations of this start: 1 of 33
- Called 100.0% of time when present
- Phage (with cluster) where this start called: Altadena_38 (FH),

Start 28:

- Found in 7 of 37 (18.9%) of genes in pham
- Manual Annotations of this start: 6 of 33
- Called 85.7% of time when present
- Phage (with cluster) where this start called: Beans_34 (AO1), Brent_34 (AO1), Franzy_34 (AO1), Jawnski_34 (AO1), NathanVaag_34 (AO1), Piccoletto_34 (AO1),

Start 29:

- Found in 17 of 37 (45.9%) of genes in pham
- Manual Annotations of this start: 16 of 33
- Called 94.1% of time when present
- Phage (with cluster) where this start called: BarretLemon_36 (AO2), BossLady_36 (AO2), Grekaycon_36 (AO2), JKerns_36 (AO2), Jordan_36 (AO2), LeeroyJ_36 (AO2), Martha_36 (AO2), Pippa_36 (AO2), Shade_36 (AO2), Sicarius2_37 (AO2), Sonny_36 (AO2), StevieBAY_36 (AO2), TaeYoung_36 (AO2), Timinator_36 (AO2), Wyborn_37 (AO2), Zartrosa_36 (AO2),

Start 30:

- Found in 1 of 37 (2.7%) of genes in pham
- Manual Annotations of this start: 1 of 33
- Called 100.0% of time when present
- Phage (with cluster) where this start called: Bumble_36 (FH),

Start 34:

- Found in 21 of 37 (56.8%) of genes in pham
- Manual Annotations of this start: 6 of 33
- Called 38.1% of time when present
- Phage (with cluster) where this start called: Bolt007_40 (FH), CalWood4100_42 (FH), EastWest_37 (AO), GravityBall_36 (AO2), King2_34 (AO1), Klevey_40 (FH), Lilmac1015_42 (FH), Prairie_39 (FH),

Start 49:

- Found in 1 of 37 (2.7%) of genes in pham
- No Manual Annotations of this start.
- Called 100.0% of time when present
- Phage (with cluster) where this start called: Belphegor_34 (DE),

Summary by clusters:

There are 7 clusters represented in this pham: CR4, DE, AO, AO2, AO1, FH, FL,

Info for manual annotations of cluster AO:

- Start number 34 was manually annotated 1 time for cluster AO.

Info for manual annotations of cluster AO1:

- Start number 28 was manually annotated 6 times for cluster AO1.
- Start number 34 was manually annotated 1 time for cluster AO1.

Info for manual annotations of cluster AO2:

- Start number 29 was manually annotated 16 times for cluster AO2.

Info for manual annotations of cluster FH:

- Start number 27 was manually annotated 1 time for cluster FH.
- Start number 30 was manually annotated 1 time for cluster FH.
- Start number 34 was manually annotated 4 times for cluster FH.

Info for manual annotations of cluster FL:

- Start number 22 was manually annotated 3 times for cluster FL.

Gene Information:

Gene: Altadena_38 Start: 28844, Stop: 29077, Start Num: 27

Candidate Starts for Altadena_38:

(3, 27260), (4, 27329), (5, 27425), (10, 28616), (12, 28673), (Start: 27 @28844 has 1 MA's), (52, 29000),

Gene: BarretLemon_36 Start: 30665, Stop: 30898, Start Num: 29

Candidate Starts for BarretLemon_36:

(20, 30626), (Start: 29 @30665 has 16 MA's), (31, 30680), (Start: 34 @30686 has 6 MA's), (40, 30734), (41, 30740), (51, 30815),

Gene: Beans_34 Start: 30361, Stop: 30594, Start Num: 28

Candidate Starts for Beans_34:

(15, 30259), (18, 30304), (Start: 28 @30361 has 6 MA's), (Start: 34 @30385 has 6 MA's), (37, 30403), (38, 30412), (41, 30439), (53, 30547),

Gene: Belphegor_34 Start: 31815, Stop: 31654, Start Num: 49

Candidate Starts for Belphegor_34:

(8, 32232), (9, 32220), (11, 32190), (14, 32088), (32, 31938), (33, 31935), (44, 31851), (46, 31848), (49, 31815), (54, 31728),

Gene: Bolt007_40 Start: 31595, Stop: 31807, Start Num: 34

Candidate Starts for Bolt007_40:

(13, 31445), (Start: 34 @31595 has 6 MA's), (52, 31727),

Gene: BossLady_36 Start: 30637, Stop: 30873, Start Num: 29

Candidate Starts for BossLady_36:

(Start: 29 @30637 has 16 MA's), (40, 30706), (41, 30712), (45, 30745),

Gene: Brent_34 Start: 30324, Stop: 30557, Start Num: 28

Candidate Starts for Brent_34:

(15, 30225), (18, 30270), (Start: 28 @30324 has 6 MA's), (Start: 34 @30348 has 6 MA's), (37, 30366), (38, 30375), (41, 30402), (53, 30510),

Gene: Bumble_36 Start: 28927, Stop: 29160, Start Num: 30

Candidate Starts for Bumble_36:

(1, 27082), (2, 27148), (3, 27325), (5, 27490), (6, 28306), (10, 28663), (12, 28720), (Start: 30 @28927 has 1 MA's), (52, 29071),

Gene: CalWood4100_42 Start: 31080, Stop: 31298, Start Num: 34

Candidate Starts for CalWood4100_42:

(Start: 34 @31080 has 6 MA's), (52, 31212),

Gene: EastWest_37 Start: 29947, Stop: 30174, Start Num: 34

Candidate Starts for EastWest_37:

(21, 29902), (26, 29914), (Start: 34 @29947 has 6 MA's), (36, 29956), (39, 29992),

Gene: Franzy_34 Start: 30323, Stop: 30556, Start Num: 28

Candidate Starts for Franzy_34:

(15, 30224), (18, 30269), (Start: 28 @30323 has 6 MA's), (Start: 34 @30347 has 6 MA's), (37, 30365), (38, 30374), (41, 30401), (53, 30509),

Gene: GravityBall_36 Start: 30686, Stop: 30898, Start Num: 34

Candidate Starts for GravityBall_36:

(20, 30626), (Start: 29 @30665 has 16 MA's), (31, 30680), (Start: 34 @30686 has 6 MA's), (40, 30734), (41, 30740), (51, 30815),

Gene: Grekaycon_36 Start: 30583, Stop: 30819, Start Num: 29

Candidate Starts for Grekaycon_36:

(Start: 29 @30583 has 16 MA's), (40, 30652), (41, 30658), (45, 30691),

Gene: Hirko_36 Start: 32006, Stop: 32242, Start Num: 22

Candidate Starts for Hirko_36:

(Start: 22 @32006 has 3 MA's),

Gene: HubbaBubba_64 Start: 48567, Stop: 48328, Start Num: 24

Candidate Starts for HubbaBubba_64:

(7, 48828), (24, 48567), (35, 48522), (42, 48459), (48, 48405),

Gene: JKerns_36 Start: 30547, Stop: 30783, Start Num: 29

Candidate Starts for JKerns_36:

(19, 30484), (Start: 29 @30547 has 16 MA's), (40, 30616), (41, 30622), (45, 30655),

Gene: Jawnski_34 Start: 30330, Stop: 30563, Start Num: 28

Candidate Starts for Jawnski_34:

(15, 30228), (18, 30273), (Start: 28 @30330 has 6 MA's), (Start: 34 @30354 has 6 MA's), (37, 30372), (38, 30381), (41, 30408), (53, 30516),

Gene: Jinkies_42 Start: 33077, Stop: 33310, Start Num: 22

Candidate Starts for Jinkies_42:

(Start: 22 @33077 has 3 MA's), (25, 33083), (39, 33155), (43, 33188),

Gene: Jordan_36 Start: 30597, Stop: 30833, Start Num: 29

Candidate Starts for Jordan_36:

(19, 30534), (Start: 29 @30597 has 16 MA's), (40, 30666), (41, 30672), (45, 30705),

Gene: King2_34 Start: 30343, Stop: 30552, Start Num: 34

Candidate Starts for King2_34:

(15, 30220), (18, 30265), (Start: 28 @30319 has 6 MA's), (Start: 34 @30343 has 6 MA's), (37, 30361), (38, 30370), (41, 30397), (53, 30505),

Gene: Klevey_40 Start: 30510, Stop: 30725, Start Num: 34

Candidate Starts for Klevey_40:

(Start: 34 @30510 has 6 MA's),

Gene: LeeroyJ_36 Start: 30664, Stop: 30897, Start Num: 29

Candidate Starts for LeeroyJ_36:

(Start: 29 @30664 has 16 MA's), (31, 30679), (Start: 34 @30685 has 6 MA's), (40, 30733), (41, 30739), (51, 30814),

Gene: Lilmac1015_42 Start: 31080, Stop: 31298, Start Num: 34

Candidate Starts for Lilmac1015_42:

(Start: 34 @31080 has 6 MA's), (52, 31212),

Gene: Martha_36 Start: 30584, Stop: 30820, Start Num: 29

Candidate Starts for Martha_36:

(Start: 29 @30584 has 16 MA's), (40, 30653), (41, 30659), (45, 30692),

Gene: NathanVaag_34 Start: 30333, Stop: 30566, Start Num: 28

Candidate Starts for NathanVaag_34:

(15, 30231), (16, 30249), (17, 30258), (18, 30276), (Start: 28 @30333 has 6 MA's), (Start: 34 @30357 has 6 MA's), (37, 30375), (38, 30384), (41, 30411), (53, 30519),

Gene: Piccoletto_34 Start: 30334, Stop: 30567, Start Num: 28

Candidate Starts for Piccoletto_34:

(15, 30232), (16, 30250), (18, 30277), (Start: 28 @30334 has 6 MA's), (Start: 34 @30358 has 6 MA's), (37, 30376), (38, 30385), (41, 30412), (53, 30520),

Gene: Pippa_36 Start: 30726, Stop: 30962, Start Num: 29
Candidate Starts for Pippa_36:
(19, 30663), (23, 30702), (Start: 29 @30726 has 16 MA's), (Start: 34 @30747 has 6 MA's), (40, 30795), (41, 30801),

Gene: Prairie_39 Start: 30423, Stop: 30638, Start Num: 34
Candidate Starts for Prairie_39:
(Start: 34 @30423 has 6 MA's),

Gene: Shade_36 Start: 30571, Stop: 30807, Start Num: 29
Candidate Starts for Shade_36:
(19, 30508), (Start: 29 @30571 has 16 MA's), (40, 30640), (41, 30646), (45, 30679),

Gene: Sicarius2_37 Start: 30191, Stop: 30424, Start Num: 29
Candidate Starts for Sicarius2_37:
(Start: 29 @30191 has 16 MA's), (Start: 34 @30212 has 6 MA's), (40, 30260), (41, 30266), (47, 30332), (50, 30338),

Gene: Sonny_36 Start: 30601, Stop: 30837, Start Num: 29
Candidate Starts for Sonny_36:
(19, 30538), (Start: 29 @30601 has 16 MA's), (40, 30670), (41, 30676), (45, 30709),

Gene: StevieBAY_36 Start: 30665, Stop: 30898, Start Num: 29
Candidate Starts for StevieBAY_36:
(20, 30626), (Start: 29 @30665 has 16 MA's), (31, 30680), (Start: 34 @30686 has 6 MA's), (40, 30734), (41, 30740), (51, 30815),

Gene: TaeYoung_36 Start: 30584, Stop: 30820, Start Num: 29
Candidate Starts for TaeYoung_36:
(Start: 29 @30584 has 16 MA's), (40, 30653), (41, 30659), (45, 30692),

Gene: Timinator_36 Start: 30664, Stop: 30897, Start Num: 29
Candidate Starts for Timinator_36:
(Start: 29 @30664 has 16 MA's), (31, 30679), (Start: 34 @30685 has 6 MA's), (40, 30733), (41, 30739), (51, 30814),

Gene: Vibaki_36 Start: 32149, Stop: 32385, Start Num: 22
Candidate Starts for Vibaki_36:
(Start: 22 @32149 has 3 MA's),

Gene: Wyborn_37 Start: 30829, Stop: 31062, Start Num: 29
Candidate Starts for Wyborn_37:
(Start: 29 @30829 has 16 MA's), (Start: 34 @30850 has 6 MA's), (40, 30898), (41, 30904), (47, 30970), (50, 30976),

Gene: Zartrosa_36 Start: 30510, Stop: 30746, Start Num: 29
Candidate Starts for Zartrosa_36:
(19, 30447), (Start: 29 @30510 has 16 MA's), (40, 30579), (41, 30585), (45, 30618),