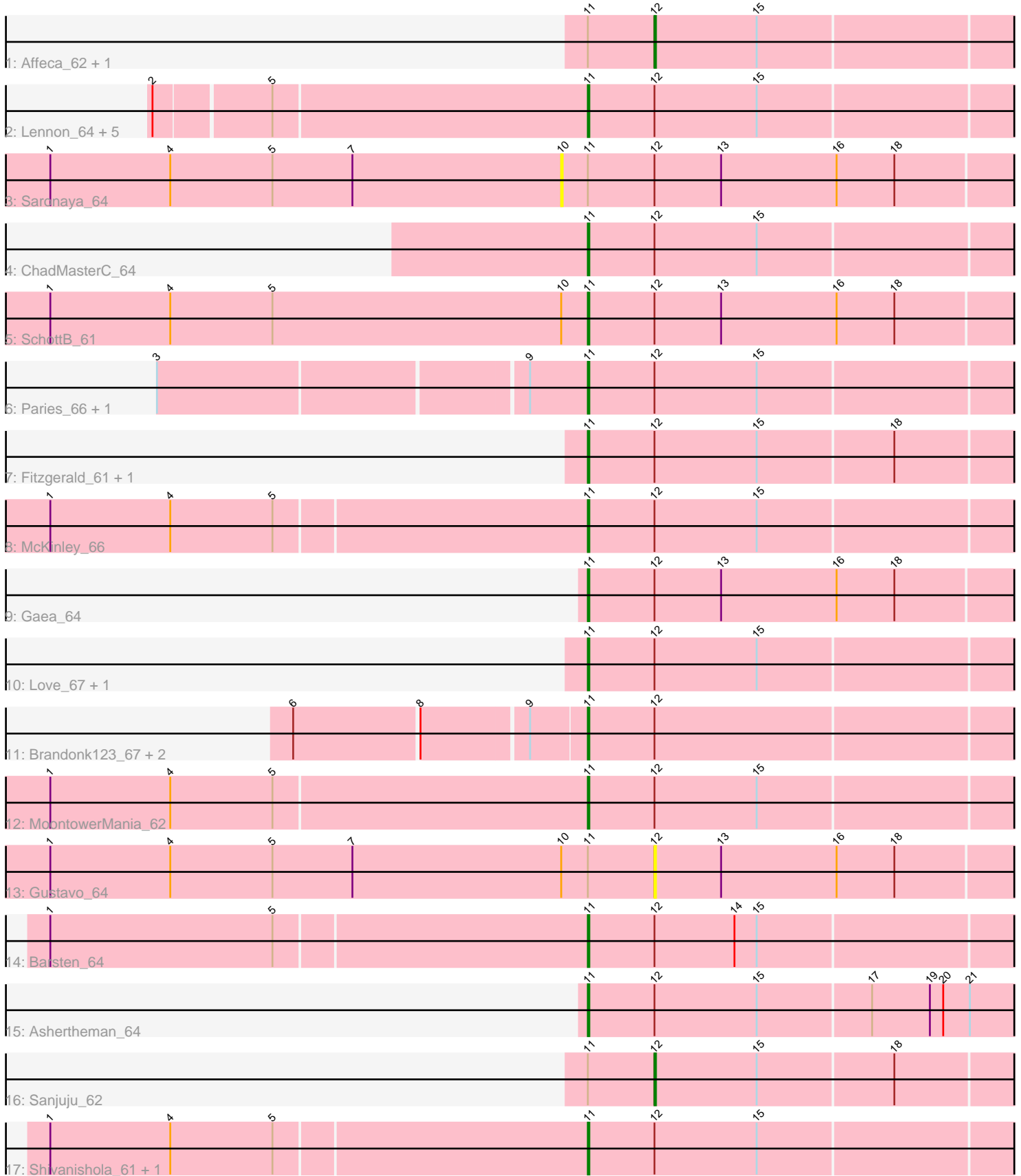


Pham 154925



Note: Tracks are now grouped by subcluster and scaled. Switching in subcluster is indicated by changes in track color. Track scale is now set by default to display the region 30 bp upstream of start 1 to 30 bp downstream of the last possible start. If this default region is judged to be packed too tightly with annotated starts, the track will be further scaled to only show that region of the ORF with annotated starts. This action will be indicated by adding "Zoomed" to the title. For starts, yellow indicates the location of called starts comprised solely of Glimmer/GeneMark auto-annotations, green indicates the location of called starts with at least 1 manual gene annotation.

Pham 154925 Report

This analysis was run 04/12/24 on database version 558.

Pham number 154925 has 29 members, 5 are drafts.

Phages represented in each track:

- Track 1 : Affeca_62, RiverRaider_65
- Track 2 : Lennon_64, Geodirt_63, Sitar_64, Keitabear_63, Stultus_60, Kewpiedoll_63
- Track 3 : Saronaya_64
- Track 4 : ChadMasterC_64
- Track 5 : SchottB_61
- Track 6 : Paries_66, Galadriel_63
- Track 7 : Fitzgerald_61, Jabberwocky_61
- Track 8 : McKinley_66
- Track 9 : Gaea_64
- Track 10 : Love_67, Sedona_63
- Track 11 : Brandonk123_67, Kamashten_62, Thing3_62
- Track 12 : MoontowerMania_62
- Track 13 : Gustavo_64
- Track 14 : Barsten_64
- Track 15 : Ashertheman_64
- Track 16 : Sanjuju_62
- Track 17 : Shivanishola_61, Angelicage_61

Summary of Final Annotations (See graph section above for start numbers):

The start number called the most often in the published annotations is 11, it was called in 22 of the 24 non-draft genes in the pham.

Genes that call this "Most Annotated" start:

- Angelicage_61, Ashertheman_64, Barsten_64, Brandonk123_67, ChadMasterC_64, Fitzgerald_61, Gaea_64, Galadriel_63, Geodirt_63, Jabberwocky_61, Kamashten_62, Keitabear_63, Kewpiedoll_63, Lennon_64, Love_67, McKinley_66, MoontowerMania_62, Paries_66, SchottB_61, Sedona_63, Shivanishola_61, Sitar_64, Stultus_60, Thing3_62,

Genes that have the "Most Annotated" start but do not call it:

- Affeca_62, Gustavo_64, RiverRaider_65, Sanjuju_62, Saronaya_64,

Genes that do not have the "Most Annotated" start:

-

Summary by start number:

Start 10:

- Found in 3 of 29 (10.3%) of genes in pham
- No Manual Annotations of this start.
- Called 33.3% of time when present
- Phage (with cluster) where this start called: Saronaya_64 (DE1),

Start 11:

- Found in 29 of 29 (100.0%) of genes in pham
- Manual Annotations of this start: 22 of 24
- Called 82.8% of time when present
- Phage (with cluster) where this start called: Angelicage_61 (DE1), Ashertheman_64 (DE1), Barsten_64 (DE1), Brandonk123_67 (DE1), ChadMasterC_64 (DE1), Fitzgerald_61 (DE1), Gaea_64 (DE1), Galadriel_63 (DE1), Geodirt_63 (DE1), Jabberwocky_61 (DE1), Kamashten_62 (DE1), Keitabear_63 (DE1), Kewpiedoll_63 (DE1), Lennon_64 (DE1), Love_67 (DE1), McKinley_66 (DE1), MoontowerMania_62 (DE1), Paries_66 (DE1), SchottB_61 (DE1), Sedona_63 (DE1), Shivanishola_61 (DE1), Sitar_64 (DE1), Stultus_60 (DE1), Thing3_62 (DE1),

Start 12:

- Found in 29 of 29 (100.0%) of genes in pham
- Manual Annotations of this start: 2 of 24
- Called 13.8% of time when present
- Phage (with cluster) where this start called: Affeca_62 (DE1), Gustavo_64 (DE1), RiverRaider_65 (DE1), Sanjuju_62 (DE1),

Summary by clusters:

There is one cluster represented in this pham: DE1

Info for manual annotations of cluster DE1:

- Start number 11 was manually annotated 22 times for cluster DE1.
- Start number 12 was manually annotated 2 times for cluster DE1.

Gene Information:

Gene: Affeca_62 Start: 50082, Stop: 50321, Start Num: 12

Candidate Starts for Affeca_62:

(Start: 11 @50037 has 22 MA's), (Start: 12 @50082 has 2 MA's), (15, 50151),

Gene: Angelicage_61 Start: 49989, Stop: 50273, Start Num: 11

Candidate Starts for Angelicage_61:

(1, 49632), (4, 49713), (5, 49779), (Start: 11 @49989 has 22 MA's), (Start: 12 @50034 has 2 MA's), (15, 50103),

Gene: Ashertheman_64 Start: 49167, Stop: 49451, Start Num: 11

Candidate Starts for Ashertheman_64:

(Start: 11 @49167 has 22 MA's), (Start: 12 @49212 has 2 MA's), (15, 49281), (17, 49356), (19, 49395), (20, 49404), (21, 49422),

Gene: Barsten_64 Start: 50125, Stop: 50409, Start Num: 11

Candidate Starts for Barsten_64:

(1, 49768), (5, 49918), (Start: 11 @50125 has 22 MA's), (Start: 12 @50170 has 2 MA's), (14, 50224), (15, 50239),

Gene: Brandonk123_67 Start: 49918, Stop: 50202, Start Num: 11

Candidate Starts for Brandonk123_67:

(6, 49735), (8, 49816), (9, 49885), (Start: 11 @49918 has 22 MA's), (Start: 12 @49963 has 2 MA's),

Gene: ChadMasterC_64 Start: 51638, Stop: 51922, Start Num: 11

Candidate Starts for ChadMasterC_64:

(Start: 11 @51638 has 22 MA's), (Start: 12 @51683 has 2 MA's), (15, 51752),

Gene: Fitzgerald_61 Start: 50359, Stop: 50643, Start Num: 11

Candidate Starts for Fitzgerald_61:

(Start: 11 @50359 has 22 MA's), (Start: 12 @50404 has 2 MA's), (15, 50473), (18, 50563),

Gene: Gaea_64 Start: 48940, Stop: 49224, Start Num: 11

Candidate Starts for Gaea_64:

(Start: 11 @48940 has 22 MA's), (Start: 12 @48985 has 2 MA's), (13, 49030), (16, 49108), (18, 49147),

Gene: Galadriel_63 Start: 50552, Stop: 50836, Start Num: 11

Candidate Starts for Galadriel_63:

(3, 50273), (9, 50513), (Start: 11 @50552 has 22 MA's), (Start: 12 @50597 has 2 MA's), (15, 50666),

Gene: Geodirt_63 Start: 50703, Stop: 50987, Start Num: 11

Candidate Starts for Geodirt_63:

(2, 50418), (5, 50493), (Start: 11 @50703 has 22 MA's), (Start: 12 @50748 has 2 MA's), (15, 50817),

Gene: Gustavo_64 Start: 49658, Stop: 49897, Start Num: 12

Candidate Starts for Gustavo_64:

(1, 49250), (4, 49331), (5, 49400), (7, 49454), (10, 49595), (Start: 11 @49613 has 22 MA's), (Start: 12 @49658 has 2 MA's), (13, 49703), (16, 49781), (18, 49820),

Gene: Jabberwocky_61 Start: 50593, Stop: 50877, Start Num: 11

Candidate Starts for Jabberwocky_61:

(Start: 11 @50593 has 22 MA's), (Start: 12 @50638 has 2 MA's), (15, 50707), (18, 50797),

Gene: Kamashten_62 Start: 49351, Stop: 49635, Start Num: 11

Candidate Starts for Kamashten_62:

(6, 49168), (8, 49249), (9, 49318), (Start: 11 @49351 has 22 MA's), (Start: 12 @49396 has 2 MA's),

Gene: Keitabear_63 Start: 51257, Stop: 51541, Start Num: 11

Candidate Starts for Keitabear_63:

(2, 50972), (5, 51047), (Start: 11 @51257 has 22 MA's), (Start: 12 @51302 has 2 MA's), (15, 51371),

Gene: Kewpiedoll_63 Start: 50615, Stop: 50899, Start Num: 11

Candidate Starts for Kewpiedoll_63:

(2, 50330), (5, 50405), (Start: 11 @50615 has 22 MA's), (Start: 12 @50660 has 2 MA's), (15, 50729),

Gene: Lennon_64 Start: 51406, Stop: 51690, Start Num: 11
Candidate Starts for Lennon_64:
(2, 51121), (5, 51196), (Start: 11 @51406 has 2 MA's), (Start: 12 @51451 has 2 MA's), (15, 51520),

Gene: Love_67 Start: 50477, Stop: 50761, Start Num: 11
Candidate Starts for Love_67:
(Start: 11 @50477 has 2 MA's), (Start: 12 @50522 has 2 MA's), (15, 50591),

Gene: McKinley_66 Start: 50477, Stop: 50761, Start Num: 11
Candidate Starts for McKinley_66:
(1, 50120), (4, 50201), (5, 50270), (Start: 11 @50477 has 2 MA's), (Start: 12 @50522 has 2 MA's),
(15, 50591),

Gene: MoontowerMania_62 Start: 50638, Stop: 50922, Start Num: 11
Candidate Starts for MoontowerMania_62:
(1, 50278), (4, 50359), (5, 50428), (Start: 11 @50638 has 2 MA's), (Start: 12 @50683 has 2 MA's),
(15, 50752),

Gene: Paries_66 Start: 50738, Stop: 51022, Start Num: 11
Candidate Starts for Paries_66:
(3, 50459), (9, 50699), (Start: 11 @50738 has 2 MA's), (Start: 12 @50783 has 2 MA's), (15, 50852),

Gene: RiverRaider_65 Start: 48133, Stop: 48372, Start Num: 12
Candidate Starts for RiverRaider_65:
(Start: 11 @48088 has 2 MA's), (Start: 12 @48133 has 2 MA's), (15, 48202),

Gene: Sanjuju_62 Start: 50536, Stop: 50775, Start Num: 12
Candidate Starts for Sanjuju_62:
(Start: 11 @50491 has 2 MA's), (Start: 12 @50536 has 2 MA's), (15, 50605), (18, 50695),

Gene: Saronaya_64 Start: 49595, Stop: 49897, Start Num: 10
Candidate Starts for Saronaya_64:
(1, 49250), (4, 49331), (5, 49400), (7, 49454), (10, 49595), (Start: 11 @49613 has 2 MA's), (Start: 12
@49658 has 2 MA's), (13, 49703), (16, 49781), (18, 49820),

Gene: SchottB_61 Start: 49523, Stop: 49807, Start Num: 11
Candidate Starts for SchottB_61:
(1, 49160), (4, 49241), (5, 49310), (10, 49505), (Start: 11 @49523 has 2 MA's), (Start: 12 @49568
has 2 MA's), (13, 49613), (16, 49691), (18, 49730),

Gene: Sedona_63 Start: 51205, Stop: 51489, Start Num: 11
Candidate Starts for Sedona_63:
(Start: 11 @51205 has 2 MA's), (Start: 12 @51250 has 2 MA's), (15, 51319),

Gene: Shivanishola_61 Start: 48244, Stop: 48528, Start Num: 11
Candidate Starts for Shivanishola_61:
(1, 47887), (4, 47968), (5, 48037), (Start: 11 @48244 has 2 MA's), (Start: 12 @48289 has 2 MA's),
(15, 48358),

Gene: Sitar_64 Start: 51115, Stop: 51399, Start Num: 11
Candidate Starts for Sitar_64:
(2, 50830), (5, 50905), (Start: 11 @51115 has 2 MA's), (Start: 12 @51160 has 2 MA's), (15, 51229),

Gene: Stultus_60 Start: 49377, Stop: 49661, Start Num: 11

Candidate Starts for Stultus_60:

(2, 49092), (5, 49167), (Start: 11 @49377 has 22 MA's), (Start: 12 @49422 has 2 MA's), (15, 49491),

Gene: Thing3_62 Start: 49351, Stop: 49635, Start Num: 11

Candidate Starts for Thing3_62:

(6, 49168), (8, 49249), (9, 49318), (Start: 11 @49351 has 22 MA's), (Start: 12 @49396 has 2 MA's),