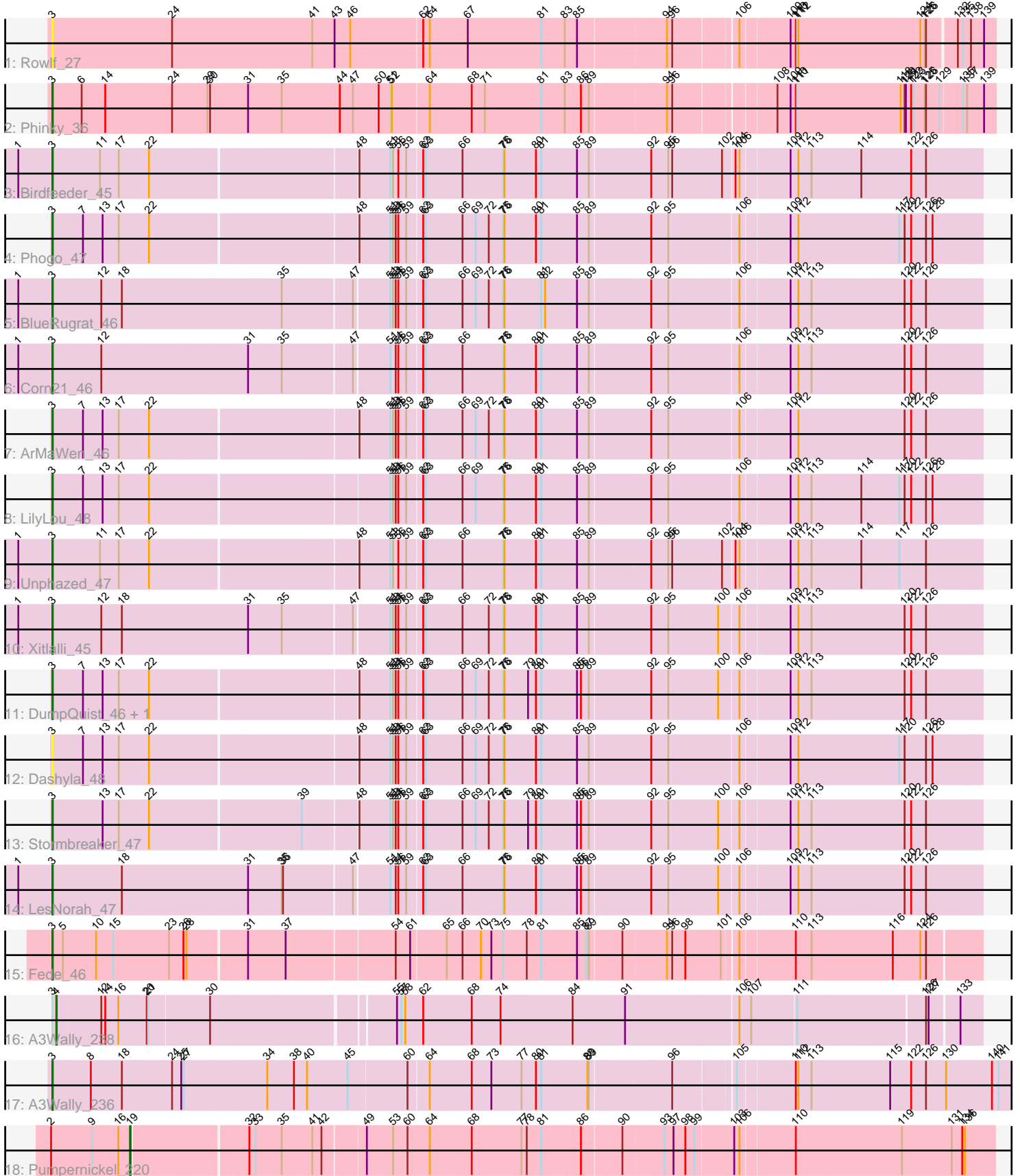


Pham 155044



Note: Tracks are now grouped by subcluster and scaled. Switching in subcluster is indicated by changes in track color. Track scale is now set by default to display the region 30 bp upstream of start 1 to 30 bp downstream of the last possible start. If this default region is judged to be packed too tightly with annotated starts, the track will be further scaled to only show that region of the ORF with annotated starts. This action will be indicated by adding "Zoomed" to the title. For starts, yellow indicates the location of called starts comprised solely of Glimmer/GeneMark auto-annotations, green indicates the location of called starts with at least 1 manual gene annotation.

Pham 155044 Report

This analysis was run 04/12/24 on database version 558.

Pham number 155044 has 19 members, 2 are drafts.

Phages represented in each track:

- Track 1 : Rowlf_27
- Track 2 : Phinky_36
- Track 3 : Birdfeeder_45
- Track 4 : Phogo_47
- Track 5 : BlueRugrat_46
- Track 6 : Corn21_46
- Track 7 : ArMaWen_46
- Track 8 : LilyLou_48
- Track 9 : Unphazed_47
- Track 10 : Xitlalli_45
- Track 11 : DumpQuist_46, Alex44_47
- Track 12 : Dashyla_48
- Track 13 : Stormbreaker_47
- Track 14 : LesNorah_47
- Track 15 : Fede_46
- Track 16 : A3Wally_238
- Track 17 : A3Wally_236
- Track 18 : Pumpernickel_220

Summary of Final Annotations (See graph section above for start numbers):

The start number called the most often in the published annotations is 3, it was called in 15 of the 17 non-draft genes in the pham.

Genes that call this "Most Annotated" start:

- A3Wally_236, Alex44_47, ArMaWen_46, Birdfeeder_45, BlueRugrat_46, Corn21_46, Dashyla_48, DumpQuist_46, Fede_46, LesNorah_47, LilyLou_48, Phinky_36, Phogo_47, Rowlf_27, Stormbreaker_47, Unphazed_47, Xitlalli_45,

Genes that have the "Most Annotated" start but do not call it:

- A3Wally_238,

Genes that do not have the "Most Annotated" start:

- Pumpernickel_220,

Summary by start number:

Start 3:

- Found in 18 of 19 (94.7%) of genes in pham
- Manual Annotations of this start: 15 of 17
- Called 94.4% of time when present
- Phage (with cluster) where this start called: A3Wally_236 (GD1), Alex44_47 (EK1), ArMaWen_46 (EK1), Birdfeeder_45 (EK1), BlueRugrat_46 (EK1), Corn21_46 (EK1), Dashyla_48 (EK1), DumpQuist_46 (EK1), Fede_46 (EK2), LesNorah_47 (EK1), LilyLou_48 (EK1), Phinky_36 (EG), Phogo_47 (EK1), Rowlf_27 (EG), Stormbreaker_47 (EK1), Unphazed_47 (EK1), Xitlalli_45 (EK1),

Start 4:

- Found in 1 of 19 (5.3%) of genes in pham
- Manual Annotations of this start: 1 of 17
- Called 100.0% of time when present
- Phage (with cluster) where this start called: A3Wally_238 (GD1),

Start 19:

- Found in 1 of 19 (5.3%) of genes in pham
- Manual Annotations of this start: 1 of 17
- Called 100.0% of time when present
- Phage (with cluster) where this start called: Pumpernickel_220 (GD4),

Summary by clusters:

There are 5 clusters represented in this pham: GD1, EG, GD4, EK2, EK1,

Info for manual annotations of cluster EG:

- Start number 3 was manually annotated 1 time for cluster EG.

Info for manual annotations of cluster EK1:

- Start number 3 was manually annotated 12 times for cluster EK1.

Info for manual annotations of cluster EK2:

- Start number 3 was manually annotated 1 time for cluster EK2.

Info for manual annotations of cluster GD1:

- Start number 3 was manually annotated 1 time for cluster GD1.
- Start number 4 was manually annotated 1 time for cluster GD1.

Info for manual annotations of cluster GD4:

- Start number 19 was manually annotated 1 time for cluster GD4.

Gene Information:

Gene: A3Wally_238 Start: 128961, Stop: 130955, Start Num: 4

Candidate Starts for A3Wally_238:

(Start: 3 @128952 has 15 MA's), (Start: 4 @128961 has 1 MA's), (12, 129060), (14, 129069), (16, 129099), (20, 129156), (21, 129159), (30, 129291), (55, 129684), (57, 129690), (58, 129699), (62,

129738), (68, 129849), (74, 129912), (84, 130074), (91, 130194), (106, 130446), (107, 130473), (111, 130569), (126, 130842), (127, 130848), (133, 130908),

Gene: A3Wally_236 Start: 126651, Stop: 128846, Start Num: 3

Candidate Starts for A3Wally_236:

(Start: 3 @126651 has 15 MA's), (8, 126735), (18, 126801), (24, 126912), (25, 126933), (27, 126939), (34, 127122), (38, 127179), (40, 127209), (45, 127302), (60, 127434), (64, 127479), (68, 127572), (73, 127614), (77, 127683), (80, 127716), (81, 127728), (88, 127833), (89, 127836), (96, 128010), (105, 128139), (110, 128262), (112, 128268), (113, 128298), (115, 128475), (122, 128523), (126, 128556), (130, 128601), (140, 128700), (141, 128715),

Gene: Alex44_47 Start: 46450, Stop: 48459, Start Num: 3

Candidate Starts for Alex44_47:

(Start: 3 @46450 has 15 MA's), (7, 46519), (13, 46564), (17, 46600), (22, 46669), (48, 47095), (51, 47164), (53, 47170), (54, 47176), (56, 47182), (59, 47200), (62, 47233), (63, 47239), (66, 47320), (69, 47350), (72, 47377), (75, 47410), (76, 47413), (79, 47467), (80, 47485), (81, 47497), (85, 47578), (86, 47587), (89, 47605), (92, 47734), (95, 47770), (100, 47881), (106, 47923), (109, 48028), (112, 48046), (113, 48076), (120, 48286), (122, 48301), (126, 48334),

Gene: ArMaWen_46 Start: 45993, Stop: 48002, Start Num: 3

Candidate Starts for ArMaWen_46:

(Start: 3 @45993 has 15 MA's), (7, 46062), (13, 46107), (17, 46143), (22, 46212), (48, 46638), (51, 46707), (53, 46713), (54, 46719), (56, 46725), (59, 46743), (62, 46776), (63, 46782), (66, 46863), (69, 46893), (72, 46920), (75, 46953), (76, 46956), (80, 47028), (81, 47040), (85, 47121), (89, 47148), (92, 47277), (95, 47313), (106, 47466), (109, 47571), (112, 47589), (120, 47829), (122, 47844), (126, 47877),

Gene: Birdfeeder_45 Start: 46199, Stop: 48208, Start Num: 3

Candidate Starts for Birdfeeder_45:

(1, 46121), (Start: 3 @46199 has 15 MA's), (11, 46307), (17, 46349), (22, 46418), (48, 46844), (51, 46913), (53, 46919), (56, 46931), (59, 46949), (62, 46982), (63, 46988), (66, 47069), (75, 47159), (76, 47162), (80, 47234), (81, 47246), (85, 47327), (89, 47354), (92, 47483), (95, 47519), (96, 47528), (102, 47639), (104, 47663), (106, 47672), (109, 47777), (112, 47795), (113, 47825), (114, 47939), (122, 48050), (126, 48083),

Gene: BlueRugrat_46 Start: 46423, Stop: 48441, Start Num: 3

Candidate Starts for BlueRugrat_46:

(1, 46345), (Start: 3 @46423 has 15 MA's), (12, 46528), (18, 46570), (35, 46924), (47, 47071), (51, 47146), (53, 47152), (54, 47158), (56, 47164), (59, 47182), (62, 47215), (63, 47221), (66, 47302), (69, 47332), (72, 47359), (75, 47392), (76, 47395), (81, 47479), (82, 47488), (85, 47560), (89, 47587), (92, 47716), (95, 47752), (106, 47905), (109, 48010), (112, 48028), (113, 48058), (120, 48268), (122, 48283), (126, 48316),

Gene: Corn21_46 Start: 46501, Stop: 48519, Start Num: 3

Candidate Starts for Corn21_46:

(1, 46423), (Start: 3 @46501 has 15 MA's), (12, 46606), (31, 46927), (35, 47002), (47, 47149), (51, 47224), (54, 47236), (56, 47242), (59, 47260), (62, 47293), (63, 47299), (66, 47380), (75, 47470), (76, 47473), (80, 47545), (81, 47557), (85, 47638), (89, 47665), (92, 47794), (95, 47830), (106, 47983), (109, 48088), (112, 48106), (113, 48136), (120, 48346), (122, 48361), (126, 48394),

Gene: Dashyla_48 Start: 46124, Stop: 48133, Start Num: 3

Candidate Starts for Dashyla_48:

(Start: 3 @46124 has 15 MA's), (7, 46193), (13, 46238), (17, 46274), (22, 46343), (48, 46769), (51, 46838), (53, 46844), (54, 46850), (56, 46856), (59, 46874), (62, 46907), (63, 46913), (66, 46994), (69, 47024), (72, 47051), (75, 47084), (76, 47087), (80, 47159), (81, 47171), (85, 47252), (89, 47279), (92, 47408), (95, 47444), (106, 47597), (109, 47702), (112, 47720), (117, 47948), (120, 47960), (126, 48008), (128, 48023),

Gene: DumpQuist_46 Start: 45978, Stop: 47987, Start Num: 3

Candidate Starts for DumpQuist_46:

(Start: 3 @45978 has 15 MA's), (7, 46047), (13, 46092), (17, 46128), (22, 46197), (48, 46623), (51, 46692), (53, 46698), (54, 46704), (56, 46710), (59, 46728), (62, 46761), (63, 46767), (66, 46848), (69, 46878), (72, 46905), (75, 46938), (76, 46941), (79, 46995), (80, 47013), (81, 47025), (85, 47106), (86, 47115), (89, 47133), (92, 47262), (95, 47298), (100, 47409), (106, 47451), (109, 47556), (112, 47574), (113, 47604), (120, 47814), (122, 47829), (126, 47862),

Gene: Fede_46 Start: 46938, Stop: 48926, Start Num: 3

Candidate Starts for Fede_46:

(Start: 3 @46938 has 15 MA's), (5, 46959), (10, 47034), (15, 47073), (23, 47196), (26, 47229), (28, 47235), (31, 47358), (37, 47439), (54, 47655), (61, 47688), (65, 47763), (66, 47799), (70, 47841), (73, 47862), (75, 47889), (78, 47943), (81, 47976), (85, 48057), (87, 48078), (89, 48084), (90, 48153), (94, 48246), (96, 48258), (98, 48288), (101, 48369), (106, 48399), (110, 48516), (113, 48552), (116, 48735), (124, 48798), (126, 48810),

Gene: LesNorah_47 Start: 46820, Stop: 48838, Start Num: 3

Candidate Starts for LesNorah_47:

(1, 46742), (Start: 3 @46820 has 15 MA's), (18, 46967), (31, 47246), (35, 47321), (36, 47324), (47, 47468), (51, 47543), (54, 47555), (56, 47561), (59, 47579), (62, 47612), (63, 47618), (66, 47699), (75, 47789), (76, 47792), (80, 47864), (81, 47876), (85, 47957), (86, 47966), (89, 47984), (92, 48113), (95, 48149), (100, 48260), (106, 48302), (109, 48407), (112, 48425), (113, 48455), (120, 48665), (122, 48680), (126, 48713),

Gene: LilyLou_48 Start: 46442, Stop: 48451, Start Num: 3

Candidate Starts for LilyLou_48:

(Start: 3 @46442 has 15 MA's), (7, 46511), (13, 46556), (17, 46592), (22, 46661), (51, 47156), (53, 47162), (54, 47168), (56, 47174), (59, 47192), (62, 47225), (63, 47231), (66, 47312), (69, 47342), (75, 47402), (76, 47405), (80, 47477), (81, 47489), (85, 47570), (89, 47597), (92, 47726), (95, 47762), (106, 47915), (109, 48020), (112, 48038), (113, 48068), (114, 48182), (117, 48266), (120, 48278), (122, 48293), (126, 48326), (128, 48341),

Gene: Phinky_36 Start: 19775, Stop: 21835, Start Num: 3

Candidate Starts for Phinky_36:

(Start: 3 @19775 has 15 MA's), (6, 19838), (14, 19889), (24, 20036), (29, 20114), (30, 20120), (31, 20204), (35, 20279), (44, 20408), (47, 20438), (50, 20495), (51, 20522), (52, 20525), (64, 20606), (68, 20699), (71, 20726), (81, 20855), (83, 20909), (86, 20945), (89, 20963), (94, 21125), (96, 21137), (108, 21347), (109, 21377), (110, 21389), (111, 21392), (118, 21626), (120, 21635), (121, 21638), (122, 21650), (123, 21656), (125, 21680), (126, 21683), (129, 21713), (135, 21761), (137, 21770), (139, 21809),

Gene: Phogo_47 Start: 46270, Stop: 48279, Start Num: 3

Candidate Starts for Phogo_47:

(Start: 3 @46270 has 15 MA's), (7, 46339), (13, 46384), (17, 46420), (22, 46489), (48, 46915), (51, 46984), (53, 46990), (54, 46996), (56, 47002), (59, 47020), (62, 47053), (63, 47059), (66, 47140), (69, 47170), (72, 47197), (75, 47230), (76, 47233), (80, 47305), (81, 47317), (85, 47398), (89, 47425), (92, 47554), (95, 47590), (106, 47743), (109, 47848), (112, 47866), (117, 48094), (120, 48106), (122,

48121), (126, 48154), (128, 48169),

Gene: Pumpernickel_220 Start: 126461, Stop: 128344, Start Num: 19

Candidate Starts for Pumpernickel_220:

(2, 126284), (9, 126377), (16, 126437), (Start: 19 @126461 has 1 MA's), (32, 126707), (33, 126719), (35, 126776), (41, 126842), (42, 126860), (49, 126947), (53, 127007), (60, 127040), (64, 127091), (68, 127184), (77, 127298), (78, 127310), (81, 127343), (86, 127433), (90, 127520), (93, 127610), (97, 127631), (98, 127658), (99, 127679), (103, 127763), (106, 127775), (110, 127892), (119, 128132), (131, 128246), (134, 128270), (136, 128276),

Gene: Rowlf_27 Start: 18355, Stop: 20409, Start Num: 3

Candidate Starts for Rowlf_27:

(Start: 3 @18355 has 15 MA's), (24, 18616), (41, 18925), (43, 18976), (46, 19012), (62, 19171), (64, 19186), (67, 19270), (81, 19435), (83, 19489), (85, 19516), (94, 19705), (96, 19717), (106, 19852), (109, 19957), (110, 19969), (111, 19972), (112, 19975), (124, 20251), (125, 20260), (126, 20263), (132, 20323), (135, 20335), (138, 20353), (139, 20383),

Gene: Stormbreaker_47 Start: 46358, Stop: 48367, Start Num: 3

Candidate Starts for Stormbreaker_47:

(Start: 3 @46358 has 15 MA's), (13, 46472), (17, 46508), (22, 46577), (39, 46895), (48, 47003), (51, 47072), (53, 47078), (54, 47084), (56, 47090), (59, 47108), (62, 47141), (63, 47147), (66, 47228), (69, 47258), (72, 47285), (75, 47318), (76, 47321), (79, 47375), (80, 47393), (81, 47405), (85, 47486), (86, 47495), (89, 47513), (92, 47642), (95, 47678), (100, 47789), (106, 47831), (109, 47936), (112, 47954), (113, 47984), (120, 48194), (122, 48209), (126, 48242),

Gene: Unphazed_47 Start: 46227, Stop: 48236, Start Num: 3

Candidate Starts for Unphazed_47:

(1, 46149), (Start: 3 @46227 has 15 MA's), (11, 46335), (17, 46377), (22, 46446), (48, 46872), (51, 46941), (53, 46947), (56, 46959), (59, 46977), (62, 47010), (63, 47016), (66, 47097), (75, 47187), (76, 47190), (80, 47262), (81, 47274), (85, 47355), (89, 47382), (92, 47511), (95, 47547), (96, 47556), (102, 47667), (104, 47691), (106, 47700), (109, 47805), (112, 47823), (113, 47853), (114, 47967), (117, 48051), (126, 48111),

Gene: Xitlalli_45 Start: 46228, Stop: 48246, Start Num: 3

Candidate Starts for Xitlalli_45:

(1, 46150), (Start: 3 @46228 has 15 MA's), (12, 46333), (18, 46375), (31, 46654), (35, 46729), (47, 46876), (51, 46951), (53, 46957), (54, 46963), (56, 46969), (59, 46987), (62, 47020), (63, 47026), (66, 47107), (72, 47164), (75, 47197), (76, 47200), (80, 47272), (81, 47284), (85, 47365), (89, 47392), (92, 47521), (95, 47557), (100, 47668), (106, 47710), (109, 47815), (112, 47833), (113, 47863), (120, 48073), (122, 48088), (126, 48121),