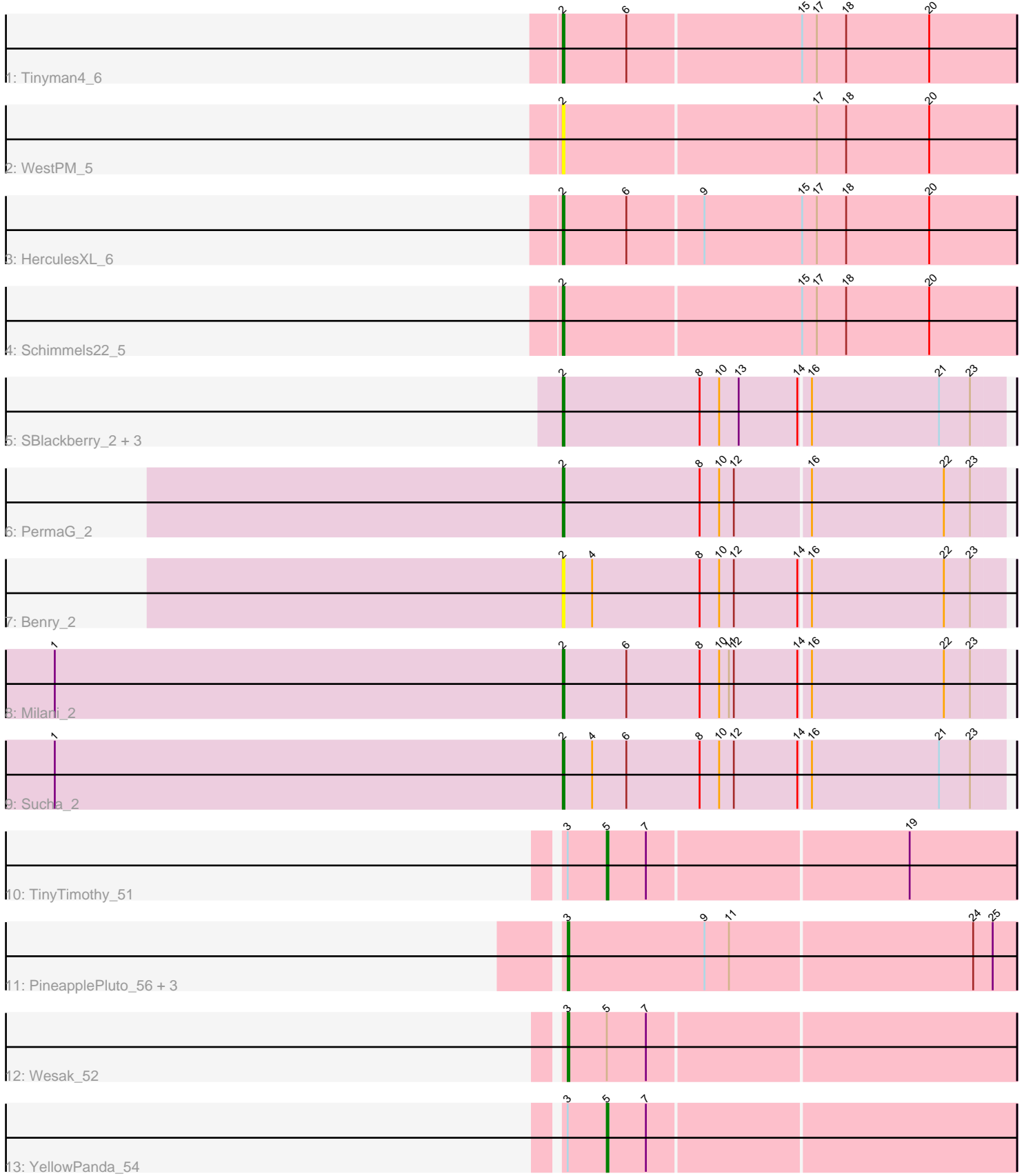


Pham 155054



Note: Tracks are now grouped by subcluster and scaled. Switching in subcluster is indicated by changes in track color. Track scale is now set by default to display the region 30 bp upstream of start 1 to 30 bp downstream of the last possible start. If this default region is judged to be packed too tightly with annotated starts, the track will be further scaled to only show that region of the ORF with annotated starts. This action will be indicated by adding "Zoomed" to the title. For starts, yellow indicates the location of called starts comprised solely of Glimmer/GeneMark auto-annotations, green indicates the location of called starts with at least 1 manual gene annotation.

Pham 155054 Report

This analysis was run 04/12/24 on database version 558.

Pham number 155054 has 19 members, 3 are drafts.

Phages represented in each track:

- Track 1 : Tinyman4_6
- Track 2 : WestPM_5
- Track 3 : HerculesXL_6
- Track 4 : Schimmels22_5
- Track 5 : SBlackberry_2, Jera_2, TurboVicky_2, Zanella_2
- Track 6 : PermaG_2
- Track 7 : Benry_2
- Track 8 : Milani_2
- Track 9 : Sucha_2
- Track 10 : TinyTimothy_51
- Track 11 : PineapplePluto_56, Oatly_55, CrunchyBoi_56, HitchHiker_56
- Track 12 : Wesak_52
- Track 13 : YellowPanda_54

Summary of Final Annotations (See graph section above for start numbers):

The start number called the most often in the published annotations is 2, it was called in 10 of the 16 non-draft genes in the pham.

Genes that call this "Most Annotated" start:

- Benry_2, HerculesXL_6, Jera_2, Milani_2, PermaG_2, SBlackberry_2, Schimmels22_5, Sucha_2, Tinyman4_6, TurboVicky_2, WestPM_5, Zanella_2,

Genes that have the "Most Annotated" start but do not call it:

-

Genes that do not have the "Most Annotated" start:

- CrunchyBoi_56, HitchHiker_56, Oatly_55, PineapplePluto_56, TinyTimothy_51, Wesak_52, YellowPanda_54,

Summary by start number:

Start 2:

- Found in 12 of 19 (63.2%) of genes in pham

- Manual Annotations of this start: 10 of 16
- Called 100.0% of time when present
- Phage (with cluster) where this start called: Benry_2 (EJ), HerculesXL_6 (EA11), Jera_2 (EJ), Milani_2 (EJ), PermaG_2 (EJ), SBlackberry_2 (EJ), Schimmels22_5 (EA11), Sucha_2 (EJ), Tinyman4_6 (EA11), TurboVicky_2 (EJ), WestPM_5 (EA11), Zanella_2 (EJ),

Start 3:

- Found in 7 of 19 (36.8%) of genes in pham
- Manual Annotations of this start: 4 of 16
- Called 71.4% of time when present
- Phage (with cluster) where this start called: CrunchyBoi_56 (EK1), HitchHiker_56 (EK1), Oatly_55 (EK1), PineapplePluto_56 (EK1), Wesak_52 (EK1),

Start 5:

- Found in 3 of 19 (15.8%) of genes in pham
- Manual Annotations of this start: 2 of 16
- Called 66.7% of time when present
- Phage (with cluster) where this start called: TinyTimothy_51 (EK1), YellowPanda_54 (EK1),

Summary by clusters:

There are 3 clusters represented in this pham: EA11, EK1, EJ,

Info for manual annotations of cluster EA11:

- Start number 2 was manually annotated 3 times for cluster EA11.

Info for manual annotations of cluster EJ:

- Start number 2 was manually annotated 7 times for cluster EJ.

Info for manual annotations of cluster EK1:

- Start number 3 was manually annotated 4 times for cluster EK1.
- Start number 5 was manually annotated 2 times for cluster EK1.

Gene Information:

Gene: Benry_2 Start: 594, Stop: 860, Start Num: 2

Candidate Starts for Benry_2:

(Start: 2 @594 has 10 MA's), (4, 612), (8, 678), (10, 690), (12, 699), (14, 738), (16, 744), (22, 825), (23, 840),

Gene: CrunchyBoi_56 Start: 52939, Stop: 53211, Start Num: 3

Candidate Starts for CrunchyBoi_56:

(Start: 3 @52939 has 4 MA's), (9, 53023), (11, 53038), (24, 53185), (25, 53197),

Gene: HerculesXL_6 Start: 3738, Stop: 4013, Start Num: 2

Candidate Starts for HerculesXL_6:

(Start: 2 @3738 has 10 MA's), (6, 3777), (9, 3822), (15, 3882), (17, 3891), (18, 3909), (20, 3960),

Gene: HitchHiker_56 Start: 53084, Stop: 53356, Start Num: 3

Candidate Starts for HitchHiker_56:

(Start: 3 @53084 has 4 MA's), (9, 53168), (11, 53183), (24, 53330), (25, 53342),

Gene: Jera_2 Start: 594, Stop: 860, Start Num: 2

Candidate Starts for Jera_2:

(Start: 2 @594 has 10 MA's), (8, 678), (10, 690), (13, 702), (14, 738), (16, 744), (21, 822), (23, 840),

Gene: Milani_2 Start: 594, Stop: 860, Start Num: 2

Candidate Starts for Milani_2:

(1, 282), (Start: 2 @594 has 10 MA's), (6, 633), (8, 678), (10, 690), (11, 696), (12, 699), (14, 738), (16, 744), (22, 825), (23, 840),

Gene: Oatly_55 Start: 52644, Stop: 52916, Start Num: 3

Candidate Starts for Oatly_55:

(Start: 3 @52644 has 4 MA's), (9, 52728), (11, 52743), (24, 52890), (25, 52902),

Gene: PermaG_2 Start: 600, Stop: 866, Start Num: 2

Candidate Starts for PermaG_2:

(Start: 2 @600 has 10 MA's), (8, 684), (10, 696), (12, 705), (16, 750), (22, 831), (23, 846),

Gene: PineapplePluto_56 Start: 53007, Stop: 53279, Start Num: 3

Candidate Starts for PineapplePluto_56:

(Start: 3 @53007 has 4 MA's), (9, 53091), (11, 53106), (24, 53253), (25, 53265),

Gene: SBlackberry_2 Start: 594, Stop: 860, Start Num: 2

Candidate Starts for SBlackberry_2:

(Start: 2 @594 has 10 MA's), (8, 678), (10, 690), (13, 702), (14, 738), (16, 744), (21, 822), (23, 840),

Gene: Schimmels22_5 Start: 3579, Stop: 3854, Start Num: 2

Candidate Starts for Schimmels22_5:

(Start: 2 @3579 has 10 MA's), (15, 3723), (17, 3732), (18, 3750), (20, 3801),

Gene: Sucha_2 Start: 594, Stop: 860, Start Num: 2

Candidate Starts for Sucha_2:

(1, 282), (Start: 2 @594 has 10 MA's), (4, 612), (6, 633), (8, 678), (10, 690), (12, 699), (14, 738), (16, 744), (21, 822), (23, 840),

Gene: TinyTimothy_51 Start: 53085, Stop: 53330, Start Num: 5

Candidate Starts for TinyTimothy_51:

(Start: 3 @53061 has 4 MA's), (Start: 5 @53085 has 2 MA's), (7, 53109), (19, 53265),

Gene: Tinyman4_6 Start: 3738, Stop: 4013, Start Num: 2

Candidate Starts for Tinyman4_6:

(Start: 2 @3738 has 10 MA's), (6, 3777), (15, 3882), (17, 3891), (18, 3909), (20, 3960),

Gene: TurboVicky_2 Start: 594, Stop: 860, Start Num: 2

Candidate Starts for TurboVicky_2:

(Start: 2 @594 has 10 MA's), (8, 678), (10, 690), (13, 702), (14, 738), (16, 744), (21, 822), (23, 840),

Gene: Wesak_52 Start: 52918, Stop: 53187, Start Num: 3

Candidate Starts for Wesak_52:

(Start: 3 @52918 has 4 MA's), (Start: 5 @52942 has 2 MA's), (7, 52966),

Gene: WestPM_5 Start: 3579, Stop: 3854, Start Num: 2

Candidate Starts for WestPM_5:

(Start: 2 @3579 has 10 MA's), (17, 3732), (18, 3750), (20, 3801),

Gene: YellowPanda_54 Start: 52811, Stop: 53056, Start Num: 5

Candidate Starts for YellowPanda_54:

(Start: 3 @52787 has 4 MA's), (Start: 5 @52811 has 2 MA's), (7, 52835),

Gene: Zanella_2 Start: 594, Stop: 860, Start Num: 2

Candidate Starts for Zanella_2:

(Start: 2 @594 has 10 MA's), (8, 678), (10, 690), (13, 702), (14, 738), (16, 744), (21, 822), (23, 840),