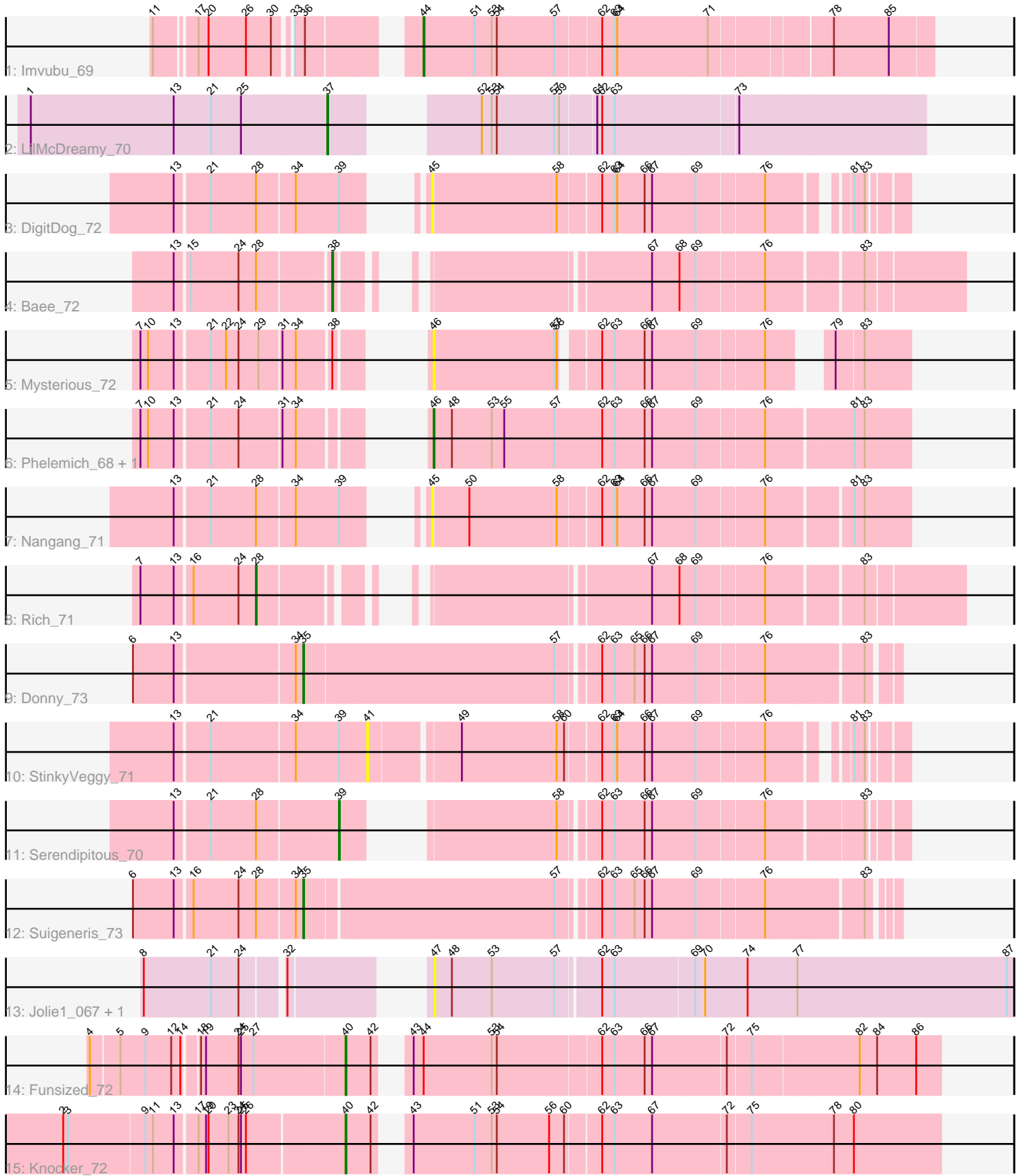


Pham 155075



Note: Tracks are now grouped by subcluster and scaled. Switching in subcluster is indicated by changes in track color. Track scale is now set by default to display the region 30 bp upstream of start 1 to 30 bp downstream of the last possible start. If this default region is judged to be packed too tightly with annotated starts, the track will be further scaled to only show that region of the ORF with annotated starts. This action will be indicated by adding "Zoomed" to the title. For starts, yellow indicates the location of called starts comprised solely of Glimmer/GeneMark auto-annotations, green indicates the location of called starts with at least 1 manual gene annotation.

Pham 155075 Report

This analysis was run 04/12/24 on database version 558.

Pham number 155075 has 17 members, 6 are drafts.

Phages represented in each track:

- Track 1 : Imvubu_69
- Track 2 : LilMcDreamy_70
- Track 3 : DigitDog_72
- Track 4 : Bae_72
- Track 5 : Mysterious_72
- Track 6 : Phelemich_68, Reprobate_70
- Track 7 : Nangang_71
- Track 8 : Rich_71
- Track 9 : Donny_73
- Track 10 : StinkyVeggy_71
- Track 11 : Serendipitous_70
- Track 12 : Suigeneris_73
- Track 13 : Jolie1_067, Hosp_065
- Track 14 : Funsized_72
- Track 15 : Knocker_72

Summary of Final Annotations (See graph section above for start numbers):

The start number called the most often in the published annotations is 40, it was called in 2 of the 11 non-draft genes in the pham.

Genes that call this "Most Annotated" start:

- Funsized_72, Knocker_72,

Genes that have the "Most Annotated" start but do not call it:

-

Genes that do not have the "Most Annotated" start:

- Bae_72, DigitDog_72, Donny_73, Hosp_065, Imvubu_69, Jolie1_067, LilMcDreamy_70, Mysterious_72, Nangang_71, Phelemich_68, Reprobate_70, Rich_71, Serendipitous_70, StinkyVeggy_71, Suigeneris_73,

Summary by start number:

Start 28:

- Found in 6 of 17 (35.3%) of genes in pham
- Manual Annotations of this start: 1 of 11
- Called 16.7% of time when present
- Phage (with cluster) where this start called: Rich_71 (B5),

Start 35:

- Found in 2 of 17 (11.8%) of genes in pham
- Manual Annotations of this start: 2 of 11
- Called 100.0% of time when present
- Phage (with cluster) where this start called: Donny_73 (B5), Suigeneris_73 (B5),

Start 37:

- Found in 1 of 17 (5.9%) of genes in pham
- Manual Annotations of this start: 1 of 11
- Called 100.0% of time when present
- Phage (with cluster) where this start called: LilMcDreamy_70 (B12),

Start 38:

- Found in 2 of 17 (11.8%) of genes in pham
- Manual Annotations of this start: 1 of 11
- Called 50.0% of time when present
- Phage (with cluster) where this start called: Bae_72 (B5),

Start 39:

- Found in 4 of 17 (23.5%) of genes in pham
- Manual Annotations of this start: 1 of 11
- Called 25.0% of time when present
- Phage (with cluster) where this start called: Serendipitous_70 (B5),

Start 40:

- Found in 2 of 17 (11.8%) of genes in pham
- Manual Annotations of this start: 2 of 11
- Called 100.0% of time when present
- Phage (with cluster) where this start called: Funsized_72 (B9), Knocker_72 (B9),

Start 41:

- Found in 1 of 17 (5.9%) of genes in pham
- No Manual Annotations of this start.
- Called 100.0% of time when present
- Phage (with cluster) where this start called: StinkyVeggy_71 (B5),

Start 44:

- Found in 2 of 17 (11.8%) of genes in pham
- Manual Annotations of this start: 1 of 11
- Called 50.0% of time when present
- Phage (with cluster) where this start called: Imvubu_69 (B10),

Start 45:

- Found in 2 of 17 (11.8%) of genes in pham
- No Manual Annotations of this start.
- Called 100.0% of time when present
- Phage (with cluster) where this start called: DigitDog_72 (B5), Nangang_71 (B5),

Start 46:

- Found in 3 of 17 (17.6%) of genes in pham
- Manual Annotations of this start: 2 of 11
- Called 100.0% of time when present
- Phage (with cluster) where this start called: Mysterious_72 (B5), Phelemich_68 (B5), Reprobate_70 (B5),

Start 47:

- Found in 2 of 17 (11.8%) of genes in pham
- No Manual Annotations of this start.
- Called 100.0% of time when present
- Phage (with cluster) where this start called: Hosp_065 (B6), Jolie1_067 (B6),

Summary by clusters:

There are 5 clusters represented in this pham: B5, B6, B12, B9, B10,

Info for manual annotations of cluster B10:

- Start number 44 was manually annotated 1 time for cluster B10.

Info for manual annotations of cluster B12:

- Start number 37 was manually annotated 1 time for cluster B12.

Info for manual annotations of cluster B5:

- Start number 28 was manually annotated 1 time for cluster B5.
- Start number 35 was manually annotated 2 times for cluster B5.
- Start number 38 was manually annotated 1 time for cluster B5.
- Start number 39 was manually annotated 1 time for cluster B5.
- Start number 46 was manually annotated 2 times for cluster B5.

Info for manual annotations of cluster B9:

- Start number 40 was manually annotated 2 times for cluster B9.

Gene Information:

Gene: Bae_72 Start: 60813, Stop: 61436, Start Num: 38

Candidate Starts for Bae_72:

(13, 60642), (15, 60657), (24, 60714), (Start: 28 @60735 has 1 MA's), (Start: 38 @60813 has 1 MA's), (67, 61101), (68, 61134), (69, 61152), (76, 61227), (83, 61326),

Gene: DigitDog_72 Start: 59928, Stop: 60428, Start Num: 45

Candidate Starts for DigitDog_72:

(13, 59703), (21, 59742), (Start: 28 @59796 has 1 MA's), (34, 59838), (Start: 39 @59886 has 1 MA's), (45, 59928), (58, 60075), (62, 60123), (63, 60138), (64, 60141), (66, 60174), (67, 60183), (69, 60234), (76, 60309), (81, 60378), (83, 60390),

Gene: Donny_73 Start: 59741, Stop: 60397, Start Num: 35

Candidate Starts for Donny_73:

(6, 59549), (13, 59597), (34, 59732), (Start: 35 @59741 has 2 MA's), (57, 60035), (62, 60077), (63, 60092), (65, 60116), (66, 60128), (67, 60137), (69, 60188), (76, 60263), (83, 60368),

Gene: Funsized_72 Start: 61973, Stop: 62629, Start Num: 40

Candidate Starts for Funsized_72:

(4, 61688), (5, 61721), (9, 61751), (12, 61781), (14, 61790), (18, 61805), (19, 61811), (24, 61850), (25, 61853), (27, 61868), (Start: 40 @61973 has 2 MA's), (42, 62003), (43, 62021), (Start: 44 @62033 has 1 MA's), (53, 62114), (54, 62120), (62, 62240), (63, 62255), (66, 62291), (67, 62300), (72, 62384), (75, 62411), (82, 62534), (84, 62555), (86, 62600),

Gene: Hosp_065 Start: 56539, Stop: 57216, Start Num: 47

Candidate Starts for Hosp_065:

(8, 56272), (21, 56353), (24, 56386), (32, 56431), (47, 56539), (48, 56560), (53, 56608), (57, 56683), (62, 56731), (63, 56746), (69, 56839), (70, 56851), (74, 56902), (77, 56959), (87, 57208),

Gene: Imvubu_69 Start: 58708, Stop: 59286, Start Num: 44

Candidate Starts for Imvubu_69:

(11, 58453), (17, 58495), (20, 58507), (26, 58552), (30, 58582), (33, 58597), (36, 58609), (Start: 44 @58708 has 1 MA's), (51, 58768), (53, 58789), (54, 58795), (57, 58864), (62, 58915), (63, 58930), (64, 58933), (71, 59041), (78, 59170), (85, 59236),

Gene: Jolie1_067 Start: 58667, Stop: 59344, Start Num: 47

Candidate Starts for Jolie1_067:

(8, 58400), (21, 58481), (24, 58514), (32, 58559), (47, 58667), (48, 58688), (53, 58736), (57, 58811), (62, 58859), (63, 58874), (69, 58967), (70, 58979), (74, 59030), (77, 59087), (87, 59336),

Gene: Knocker_72 Start: 61176, Stop: 61832, Start Num: 40

Candidate Starts for Knocker_72:

(2, 60855), (3, 60861), (9, 60951), (11, 60960), (13, 60984), (17, 61008), (19, 61017), (20, 61020), (23, 61044), (24, 61056), (25, 61059), (26, 61065), (Start: 40 @61176 has 2 MA's), (42, 61206), (43, 61224), (51, 61296), (53, 61317), (54, 61323), (56, 61386), (60, 61404), (62, 61440), (63, 61455), (67, 61500), (72, 61584), (75, 61611), (78, 61707), (80, 61731),

Gene: LilMcDreamy_70 Start: 59640, Stop: 60260, Start Num: 37

Candidate Starts for LilMcDreamy_70:

(1, 59286), (13, 59457), (21, 59502), (25, 59538), (Start: 37 @59640 has 1 MA's), (52, 59748), (53, 59760), (54, 59766), (57, 59835), (59, 59841), (61, 59880), (62, 59886), (63, 59901), (73, 60042),

Gene: Mysterious_72 Start: 59836, Stop: 60333, Start Num: 46

Candidate Starts for Mysterious_72:

(7, 59590), (10, 59599), (13, 59629), (21, 59668), (22, 59686), (24, 59701), (29, 59725), (31, 59749), (34, 59764), (Start: 38 @59800 has 1 MA's), (Start: 46 @59836 has 2 MA's), (57, 59980), (58, 59983), (62, 60019), (63, 60034), (66, 60070), (67, 60079), (69, 60130), (76, 60205), (79, 60250), (83, 60280),

Gene: Nangang_71 Start: 59924, Stop: 60454, Start Num: 45

Candidate Starts for Nangang_71:

(13, 59699), (21, 59738), (Start: 28 @59792 has 1 MA's), (34, 59834), (Start: 39 @59882 has 1 MA's), (45, 59924), (50, 59966), (58, 60071), (62, 60119), (63, 60134), (64, 60137), (66, 60170), (67, 60179), (69, 60230), (76, 60305), (81, 60392), (83, 60404),

Gene: Phelemich_68 Start: 59668, Stop: 60213, Start Num: 46

Candidate Starts for Phelemich_68:

(7, 59422), (10, 59431), (13, 59461), (21, 59500), (24, 59533), (31, 59581), (34, 59596), (Start: 46 @59668 has 2 MA's), (48, 59689), (53, 59737), (55, 59752), (57, 59812), (62, 59869), (63, 59884), (66, 59920), (67, 59929), (69, 59980), (76, 60055), (81, 60148), (83, 60160),

Gene: Reprobate_70 Start: 59673, Stop: 60218, Start Num: 46

Candidate Starts for Reprobate_70:

(7, 59427), (10, 59436), (13, 59466), (21, 59505), (24, 59538), (31, 59586), (34, 59601), (Start: 46 @59673 has 2 MA's), (48, 59694), (53, 59742), (55, 59757), (57, 59817), (62, 59874), (63, 59889), (66, 59925), (67, 59934), (69, 59985), (76, 60060), (81, 60153), (83, 60165),

Gene: Rich_71 Start: 60783, Stop: 61481, Start Num: 28

Candidate Starts for Rich_71:

(7, 60651), (13, 60690), (16, 60708), (24, 60762), (Start: 28 @60783 has 1 MA's), (67, 61146), (68, 61179), (69, 61197), (76, 61272), (83, 61371),

Gene: Serendipitous_70 Start: 59224, Stop: 59772, Start Num: 39

Candidate Starts for Serendipitous_70:

(13, 59041), (21, 59080), (Start: 28 @59134 has 1 MA's), (Start: 39 @59224 has 1 MA's), (58, 59407), (62, 59446), (63, 59461), (66, 59497), (67, 59506), (69, 59557), (76, 59632), (83, 59734),

Gene: StinkyVeggy_71 Start: 59737, Stop: 60303, Start Num: 41

Candidate Starts for StinkyVeggy_71:

(13, 59521), (21, 59560), (34, 59656), (Start: 39 @59704 has 1 MA's), (41, 59737), (49, 59836), (58, 59950), (60, 59959), (62, 59998), (63, 60013), (64, 60016), (66, 60049), (67, 60058), (69, 60109), (76, 60184), (81, 60253), (83, 60265),

Gene: Suigeneris_73 Start: 59932, Stop: 60579, Start Num: 35

Candidate Starts for Suigeneris_73:

(6, 59740), (13, 59788), (16, 59806), (24, 59860), (Start: 28 @59881 has 1 MA's), (34, 59923), (Start: 35 @59932 has 2 MA's), (57, 60220), (62, 60262), (63, 60277), (65, 60301), (66, 60313), (67, 60322), (69, 60373), (76, 60448), (83, 60553),