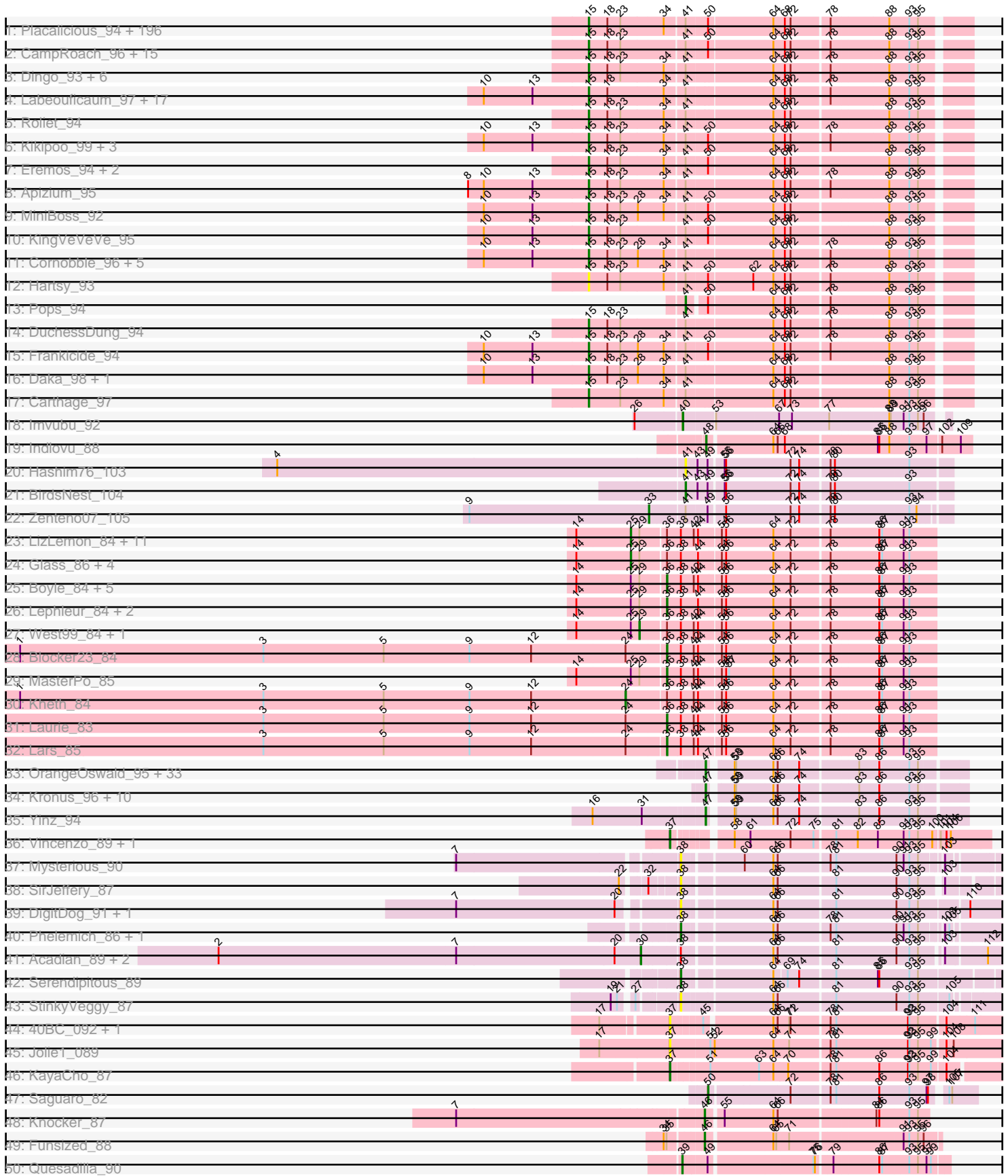


Pham 156019



Note: Tracks are now grouped by subcluster and scaled. Switching in subcluster is indicated by changes in track color. Track scale is now set by default to display the region 30 bp upstream of start 1 to 30 bp downstream of the last possible start. If this default region is judged to be packed too tightly with annotated starts, the track will be further scaled to only show that region of the ORF with annotated starts. This action will be indicated by adding "Zoomed" to the title. For starts, yellow indicates the location of called starts comprised solely of Glimmer/GeneMark auto-annotations, green indicates the location of called starts with at least 1 manual gene annotation.

Pham 156019 Report

This analysis was run 04/12/24 on database version 558.

Pham number 156019 has 369 members, 39 are drafts.

Phages represented in each track:

- Track 1 : Placalicious_94, Lego3393_95, Pherdinand_98, Gareth_97, Oline_96, Anderson_98, Longacauda_97, Chah_99, Daffy_96, Orwigg_99, Nicole21_98, DonSanchon_92, Childish_97, UncleHowie_93, Prickles_97, Matalotodo_97, Legolas_98, Tomlarah_97, Olive_93, LemonSlice_97, Nyala_97, Fringe_101, Jiminy_97, Zelda_97, Banjo_93, Mana_94, Morgushi_94, PhatCats2014_96, Soile_98, LasagnaCat_96, Duggie_97, Skippy_97, DoesntMatter_94, Katniss_99, LeiMonet_99, ShiVal_96, Fang_97, AbsoluteMadLad_95, Craff_98, Simielle_97, Sigman_96, Struggle_97, Riggan_98, Phunky_94, BlackStallion_96, Eugenia_99, Samaymay_97, Mesh1_97, Mecca_97, JacAttac_97, Andre_100, Orfeu_97, TallGrassMM_96, Yoshand_98, Podrick_95, Cannibal_97, Beaglebox_93, Etaye_96, Kwadwo_96, FugateOSU_97, Toni_96, Manad_96, Waterdiva_98, Swiphy_101, Bluephacebaby_96, FriarPreacher_94, JDog_96, Piglet_0096, Squid_96, Morty_97, CamL_97, Scoot17C_97, Plmatters_94, Sheila_91, SassyCat97_95, Hamish_94, Suffolk_92, ProfessorX_94, CheetO_93, JakeO_98, Sophia_95, Vaticameos_94, Iridoclysis_96, Xavier_96, Lulwa_94, PhenghisKhan_97, Emiris_99, Telesworld_95, Mosaic_94, Weher20_94, Vortex_95, PG1_95, PhrankReynolds_95, Mutante_98, Giraffe_98, Kimbrough_98, LeeLot_95, ThreeOh3D2_98, PinheadLarry_96, Vista_96, Murdoc_93, QueenBeane_97, Held_95, Keitherie_100, Selr12_101, Inverness_94, Lumine_98, Oosterbaan_97, Inchworm_98, Badfish_97, Hetaeria_96, Slatt_99, Hertubise_96, GeneCoco_96, Haimas_94, Phareon_94, DirtJuice_98, KlimbOn_96, KLucky39_94, Burr_99, EmpTee_96, Jillium_97, Cher_97, Altwerkus_94, Buckeye_95, MitKao_97, MRabcd_97, Adriana_97, Thora_95, Virapocalypse_98, HighStump_99, Mulan_96, Coletti_99, Kahve_97, Usavi_97, Dice_97, KingTut_87, Trypo_97, Colbert_95, Ricotta_94, Cosmolli16_98, HenryJackson_97, Squiggle_96, Phamished_96, Gophee_96, YouGoGlencoco_97, JangoPhett_95, Mcshane_99, UAch1_97, Puhltonio_92, True_98, Timmi_95, Zaider_98, Olak_99, Phergie_97, Phipps_94, LuckyMarjie_94, Bishoperium_97, Numberten_97, Newman_92, Hocus_96, Quisquiliae_98, Pacifista_100, OliverWalter_96, Doddsville_94, TomBombadil_97, Dione_95, FluffyNinja_98, Charles1_100, Melc17_94, Spartan300_96, Nacho_0099, Freya_93, Haleema_96, Scrick_98, Chute_97, LostAndPhound_96, Potter_91, Grand2040_94, DaddyDaniels_100, DelRivs_96, ABU_95, Orion_95, Lasso_96, Serpentine_0099, Crownjwl_94, Maru_96, Cobra_97, Megatron_98, PhatLouie_99, Brilliant_100, PhrodoBaggins_99, Dati_94, Omniscient_98, Swish_98, Serendipity_96, Solosis_95
- Track 2 : CampRoach_96, Surely_97, Zonia_97, Durga_99, Lulumae_92, Chorkpop_98, Fozzie_93, MrPhizzler_96, Roy17_94, Valjean_95, Megamind20_99, Pinkman_96, Virgeve_95, Wallhey_98, Rimu_100, Kwksand96_98

- Track 3 : Dingo_93, Pipsqueak_94, Basato_95, Soto_93, Harvey_94, Kloppinator_97, Mikota_91
- Track 4 : Labeouficaum_97, Phleuron_94, Derpp_96, Magic8_96, Kailash_95, Schueller_96, TyrionL_97, Ashraf_98, Windsor_96, Maskar_98, CharlieGBrown_95, MichaelPhcott_95, Veritas_96, MelsMeow_95, Mag7_95, Chaelin_97, ImtiyazSitla_98, BatteryCK_95
- Track 5 : Roliet_94
- Track 6 : Kikipoo_99, Gwilliam_97, AltPhacts_94, IsaacEli_99
- Track 7 : Eremos_94, Lopsy_93, Tooj_94
- Track 8 : Apizium_95
- Track 9 : MiniBoss_92
- Track 10 : KingVeVeVe_95
- Track 11 : Cornobble_96, OSmaximus_97, RedMaple_95, Antonia_96, Schadenfreude_97, Aelin_96
- Track 12 : Hartsy_93
- Track 13 : Pops_94
- Track 14 : DuchessDung_94
- Track 15 : Frankicide_94
- Track 16 : Daka_98, SDcharge11_95
- Track 17 : Carthage_97
- Track 18 : Imvubu_92
- Track 19 : Indlovu_88
- Track 20 : Hashim76_103
- Track 21 : BirdsNest_104
- Track 22 : Zenteno07_105
- Track 23 : LizLemon_84, Qyrzula_75, Ares_84, FrenchFry_85, Sabella_84, Bananafish_85, Tinciduntolum_85, Arbiter_81, Brownie5_84, Rhinoforte_84, Opia_85, Hedgerow_84
- Track 24 : Glass_86, ItsyBitsy1_81, Godines_84, Rosebush_82, Holeinone_84
- Track 25 : Boyle_84, Coffee_83, Calamitous_85, Phantasmagoria_83, Allegro_84, Faze9_83
- Track 26 : Lephleur_84, TA17A_85, Kaleb_84
- Track 27 : West99_84, Tres_84
- Track 28 : Blocker23_84
- Track 29 : MasterPo_85
- Track 30 : Kheth_84
- Track 31 : Laurie_83
- Track 32 : Lars_85
- Track 33 : OrangeOswald_95, Akoma_97, Corofin_96, Phlyer_96, Deenasa_97, Nozo_96, Daisy_95, Gervas_97, SynergyX_97, GlenHope_97, Rita1961_97, Pipefish_95, Tydolla_92, Neos5_95, HarveySr_93, SlippinJimmy_99, Heathcliff_96, Baloo_95, Briakila_97, Phayeta_98, Abinghost_96, Obutu_98, MmasiCarm_97, RomaT_96, Phaedrus_91, Halfpint_96, ChaChing_96, Athena_98, Philly_95, RagingRooster_96, Audrey_96, Jackstina_89, Morty007_94, Kamiyu_96
- Track 34 : Kronus_96, LestyG_94, Devonte_94, Bernardo_93, Compostia_95, Ben11_96, Marley1013_94, Chandler_96, Casbah_96, Yahalom_94, Mortcellus_96
- Track 35 : Yinz_94
- Track 36 : Vincenzo_89, AlanGrant_90
- Track 37 : Mysterious_90
- Track 38 : SirJeffery_87
- Track 39 : DigitDog_91, Nangang_90
- Track 40 : Phelemich_86, Reprobate_88
- Track 41 : Acadian_89, Suigeneris_90, Donny_89

- Track 42 : Serendipitous_89
- Track 43 : StinkyVeggy_87
- Track 44 : 40BC_092, 39HC_092
- Track 45 : Jolie1_089
- Track 46 : KayaCho_87
- Track 47 : Saguaro_82
- Track 48 : Knocker_87
- Track 49 : Funsized_88
- Track 50 : Quesadilla_90
- Track 51 : PenguinLover67_87
- Track 52 : CRB2_88

Summary of Final Annotations (See graph section above for start numbers):

The start number called the most often in the published annotations is 15, it was called in 236 of the 330 non-draft genes in the pham.

Genes that call this "Most Annotated" start:

- ABU_95, AbsoluteMadLad_95, Adriana_97, Aelin_96, AltPhacts_94, Altwerkus_94, Anderson_98, Andre_100, Antonia_96, Apizium_95, Ashraf_98, Badfish_97, Banjo_93, Basato_95, BatteryCK_95, Beaglebox_93, Bishoperium_97, BlackStallion_96, Bluephacebaby_96, Brilliant_100, Buckeye_95, Burr_99, CamL_97, CampRoach_96, Cannibal_97, Carthage_97, Chaelin_97, Chah_99, Charles1_100, CharlieGBrown_95, CheetO_93, Cher_97, Childish_97, Chorkpop_98, Chute_97, Cobra_97, Colbert_95, Coletti_99, Cornobble_96, Cosmolli16_98, Craff_98, Crownjwl_94, DaddyDaniels_100, Daffy_96, Daka_98, Dati_94, DelRivs_96, Derpp_96, Dice_97, Dingo_93, Dione_95, DirtJuice_98, Doddsville_94, DoesntMatter_94, DonSanchon_92, DuchessDung_94, Duggie_97, Durga_99, Emiris_99, EmpTee_96, Eremos_94, Etaye_96, Eugenia_99, Fang_97, FluffyNinja_98, Fozzie_93, Frankicide_94, Freya_93, FriarPreacher_94, Fringe_101, FugateOSU_97, Gareth_97, GeneCoco_96, Giraffe_98, Gophee_96, Grand2040_94, Gwilliam_97, Haimas_94, Haleema_96, Hamish_94, Hartsy_93, Harvey_94, Held_95, HenryJackson_97, Hertubise_96, Hetaeria_96, HighStump_99, Hocus_96, ImtiyazSitla_98, Inchworm_98, Inverness_94, Iridoclysis_96, IsaacEli_99, JDog_96, JacAttac_97, JakeO_98, JangoPhett_95, Jillium_97, Jiminy_97, KLucky39_94, Kahve_97, Kailash_95, Katniss_99, Keitherie_100, Kikipoo_99, Kimbrough_98, KingTut_87, KingVeVeVe_95, KlimbOn_96, Kloppinator_97, Kwadwo_96, Kwksand96_98, Labeouficaum_97, LasagnaCat_96, Lasso_96, LeeLot_95, Lego3393_95, Legolas_98, LeiMonet_99, LemonSlice_97, Longacauda_97, Lopsy_93, LostAndPhound_96, LuckyMarjie_94, Lulumae_92, Lulwa_94, Lumine_98, MRabcd_97, Mag7_95, Magic8_96, Mana_94, Manad_96, Maru_96, Maskar_98, Matalotodo_97, Mcshane_99, Mecca_97, Megamind20_99, Megatron_98, Melc17_94, MelsMeow_95, Mesh1_97, MichaelPhcott_95, Mikota_91, MiniBoss_92, MitKao_97, Morgushi_94, Morty_97, Mosaic_94, MrPhizzler_96, Mulan_96, Murdoc_93, Mutante_98, Nacho_0099, Newman_92, Nicole21_98, Numberten_97, Nyala_97, OSmaximus_97, Olak_99, Oline_96, Olive_93, OliverWalter_96, Omniscient_98, Oosterbaan_97, Orfeu_97, Orion_95, Orwigg_99, PG1_95, Pacifista_100, Phamished_96, Phareon_94, PhatCats2014_96, PhatLouie_99, PhenghisKhan_97, Pherdinand_98, Phergie_97, Phipps_94, Phleuron_94, PhrankReynolds_95, PhrodoBaggins_99, Phunky_94, Piglet_0096, PinheadLarry_96,

Pinkman_96, Pipsqueak_94, Placalicious_94, Plmatters_94, Podrick_95, Potter_91, Prickles_97, ProfessorX_94, Puhltonio_92, QueenBeane_97, Quisquillae_98, RedMaple_95, Ricotta_94, Riggan_98, Rimu_100, Roliet_94, Roy17_94, SDcharge11_95, Samaymay_97, SassyCat97_95, Schadenfreude_97, Schueller_96, Scoot17C_97, Scrick_98, Selr12_101, Serendipity_96, Serpentine_0099, Sheila_91, ShiVal_96, Sigman_96, Simielle_97, Skippy_97, Slatt_99, Soile_98, Solosis_95, Sophia_95, Soto_93, Spartan300_96, Squid_96, Squiggle_96, Struggle_97, Suffolk_92, Surely_97, Swiphy_101, Swish_98, TallGrassMM_96, Telesworld_95, Thora_95, ThreeOh3D2_98, Timmi_95, TomBombadil_97, Tomlarah_97, Toni_96, Tooj_94, True_98, Trypo_97, TyrionL_97, UAch1_97, UncleHowie_93, Usavi_97, Valjean_95, Vaticameos_94, Veritas_96, Virapocalypse_98, Virgeve_95, Vista_96, Vortex_95, Wallhey_98, Waterdiva_98, Weher20_94, Windsor_96, Xavier_96, Yoshand_98, YouGoGlencoco_97, Zaider_98, Zelda_97, Zonia_97,

Genes that have the "Most Annotated" start but do not call it:

-

Genes that do not have the "Most Annotated" start:

- 39HC_092, 40BC_092, Abinghost_96, Acadian_89, Akoma_97, AlanGrant_90, Allegro_84, Arbiter_81, Ares_84, Athena_98, Audrey_96, Baloo_95, Bananafish_85, Ben11_96, Bernardo_93, BirdsNest_104, Blocker23_84, Boyle_84, Briakila_97, Brownie5_84, CRB2_88, Calamitous_85, Casbah_96, ChaChing_96, Chandler_96, Coffee_83, Compostia_95, Corofin_96, Daisy_95, Deenasa_97, Devonte_94, DigitDog_91, Donny_89, Faze9_83, FrenchFry_85, Funsized_88, Gervas_97, Glass_86, GlenHope_97, Godines_84, Halfpint_96, HarveySr_93, Hashim76_103, Heathcliff_96, Hedgerow_84, Holeinone_84, Imvubu_92, Indlovu_88, ItsyBitsy1_81, Jackstina_89, Jolie1_089, Kaleb_84, Kamiyu_96, KayaCho_87, Kheth_84, Knocker_87, Kronus_96, Lars_85, Laurie_83, Lephleur_84, LestyG_94, LizLemon_84, Marley1013_94, MasterPo_85, MmasiCarm_97, Mortcellus_96, Morty007_94, Mysterious_90, Nangang_90, Neos5_95, Nozo_96, Obutu_98, Opia_85, OrangeOswald_95, PenguinLover67_87, Phaedrus_91, Phantasmagoria_83, Phayeta_98, Phelemich_86, Philly_95, Phlyer_96, Pipefish_95, Pops_94, Quesadilla_90, Qyrzula_75, RagingRooster_96, Reprobate_88, Rhinoforte_84, Rita1961_97, RomaT_96, Rosebush_82, Sabella_84, Saguaro_82, Serendipitous_89, SirJeffery_87, SlippinJimmy_99, StinkyVeggy_87, Suigeneris_90, SynergyX_97, TA17A_85, Tinciduntolum_85, Tres_84, Tydolla_92, Vincenzo_89, West99_84, Yahalom_94, Yinz_94, Zenteno07_105,

Summary by start number:

Start 15:

- Found in 261 of 369 (70.7%) of genes in pham
- Manual Annotations of this start: 236 of 330
- Called 100.0% of time when present
- Phage (with cluster) where this start called: ABU_95 (B1), AbsoluteMadLad_95 (B1), Adriana_97 (B1), Aelin_96 (B1), AltPhacts_94 (B1), Altwerkus_94 (B1), Anderson_98 (B1), Andre_100 (B1), Antonia_96 (B1), Apizium_95 (B1), Ashraf_98 (B1), Badfish_97 (B1), Banjo_93 (B1), Basato_95 (B1), BatteryCK_95 (B1), Beaglebox_93 (B1), Bishoperium_97 (B1), BlackStallion_96 (B1), Bluephacebaby_96 (B1), Brilliant_100 (B1), Buckeye_95 (B1), Burr_99 (B1), CamL_97 (B1), CampRoach_96 (B1), Cannibal_97 (B1), Carthage_97 (B1), Chaelin_97 (B1), Chah_99 (B1), Charles1_100 (B1), CharlieGBrown_95 (B1), CheetO_93 (B1), Cher_97 (B1), Childish_97 (B1), Chorkpop_98 (B1), Chute_97 (B1), Cobra_97 (B1),

Colbert_95 (B1), Coletti_99 (B1), Cornobble_96 (B1), Cosmolli16_98 (B1), Craff_98 (B1), Crownjwl_94 (B1), DaddyDaniels_100 (B1), Daffy_96 (B1), Daka_98 (B1), Dati_94 (B1), DelRivs_96 (B1), Derpp_96 (B1), Dice_97 (B1), Dingo_93 (B1), Dione_95 (B1), DirtJuice_98 (B1), Doddsville_94 (B1), DoesntMatter_94 (B1), DonSanchon_92 (B1), DuchessDung_94 (B1), Duggie_97 (B1), Durga_99 (B1), Emiris_99 (B1), EmpTee_96 (B1), Eremos_94 (B1), Etaye_96 (B1), Eugenia_99 (B1), Fang_97 (B1), FluffyNinja_98 (B1), Fozzie_93 (B1), Frankicide_94 (B1), Freya_93 (B1), FriarPreacher_94 (B1), Fringe_101 (B1), FugateOSU_97 (B1), Gareth_97 (B1), GeneCoco_96 (B1), Giraffe_98 (B1), Gophee_96 (B1), Grand2040_94 (B1), Gwilliam_97 (B1), Haimas_94 (B1), Haleema_96 (B1), Hamish_94 (B1), Hartsy_93 (B1), Harvey_94 (B1), Held_95 (B1), HenryJackson_97 (B1), Hertubise_96 (B1), Hetaeria_96 (B1), HighStump_99 (B1), Hocus_96 (B1), ImtiyazSitla_98 (B1), Inchworm_98 (B1), Inverness_94 (B1), Iridoclysis_96 (B1), IsaacEli_99 (B1), JDog_96 (B1), JacAttac_97 (B1), JakeO_98 (B1), JangoPhett_95 (B1), Jillium_97 (B1), Jiminy_97 (B1), KLucky39_94 (B1), Kahve_97 (B1), Kailash_95 (B1), Katniss_99 (B1), Keitherie_100 (B1), Kikipoo_99 (B1), Kimbrough_98 (B1), KingTut_87 (B1), KingVeVeVe_95 (B1), KlimbOn_96 (B1), Kloppinator_97 (B1), Kwadwo_96 (B1), Kwksand96_98 (B1), Labeouficaum_97 (B1), LasagnaCat_96 (B1), Lasso_96 (B1), LeeLot_95 (B1), Lego3393_95 (B1), Legolas_98 (B1), LeiMonet_99 (B1), LemonSlice_97 (B1), Longacauda_97 (B1), Lopsy_93 (B1), LostAndPhound_96 (B1), LuckyMarjie_94 (B1), Lulumae_92 (B1), Lulwa_94 (B1), Lumine_98 (B1), MRabcd_97 (B1), Mag7_95 (B1), Magic8_96 (B1), Mana_94 (B1), Manad_96 (B1), Maru_96 (B1), Maskar_98 (B1), Matalotodo_97 (B1), Mcshane_99 (B1), Mecca_97 (B1), Megamind20_99 (B1), Megatron_98 (B1), Melc17_94 (B1), MelsMeow_95 (B1), Mesh1_97 (B1), MichaelPhcott_95 (B1), Mikota_91 (B1), MiniBoss_92 (B1), MitKao_97 (B1), Morgushi_94 (B1), Morty_97 (B1), Mosaic_94 (B1), MrPhizzler_96 (B1), Mulan_96 (B1), Murdoc_93 (B1), Mutante_98 (B1), Nacho_0099 (B1), Newman_92 (B1), Nicole21_98 (B1), Numberten_97 (B1), Nyala_97 (B1), OSmaximus_97 (B1), Olak_99 (B1), Oline_96 (B1), Olive_93 (B1), OliverWalter_96 (B1), Omniscient_98 (B1), Oosterbaan_97 (B1), Orfeu_97 (B1), Orion_95 (B1), Orwigg_99 (B1), PG1_95 (B1), Pacifista_100 (B1), Phamished_96 (B1), Phareon_94 (B1), PhatCats2014_96 (B1), PhatLouie_99 (B1), PhenghisKhan_97 (B1), Pherdinand_98 (B1), Phergie_97 (B1), Phipps_94 (B1), Phleuron_94 (B1), PhrankReynolds_95 (B1), PhrodoBaggins_99 (B1), Phunky_94 (B1), Piglet_0096 (B1), PinheadLarry_96 (B1), Pinkman_96 (B1), Pipsqueak_94 (B1), Placalicious_94 (B1), Plmatters_94 (B1), Podrick_95 (B1), Potter_91 (B1), Prickles_97 (B1), ProfessorX_94 (B1), Puhltonio_92 (B1), QueenBeane_97 (B1), Quisquiliae_98 (B1), RedMaple_95 (B1), Ricotta_94 (B1), Riggan_98 (B1), Rimu_100 (B1), Roliet_94 (B1), Roy17_94 (B1), SDcharge11_95 (B1), Samaymay_97 (B1), SassyCat97_95 (B1), Schadenfreude_97 (B1), Schueller_96 (B1), Scoot17C_97 (B1), Scrick_98 (B1), Selr12_101 (B1), Serendipity_96 (B1), Serpentine_0099 (B1), Sheila_91 (B1), ShiVal_96 (B1), Sigman_96 (B1), Simielle_97 (B1), Skippy_97 (B1), Slatt_99 (B1), Soile_98 (B1), Solosis_95 (B1), Sophia_95 (B1), Soto_93 (B1), Spartan300_96 (B1), Squid_96 (B1), Squiggle_96 (B1), Struggle_97 (B1), Suffolk_92 (B1), Surely_97 (B1), Swiphy_101 (B1), Swish_98 (B1), TallGrassMM_96 (B1), Telesworld_95 (B1), Thora_95 (B1), ThreeOh3D2_98 (B1), Timmi_95 (B1), TomBombadil_97 (B1), Tomlarah_97 (B1), Toni_96 (B1), Tooj_94 (B1), True_98 (B1), Trypo_97 (B1), TyrionL_97 (B1), UAch1_97 (B1), UncleHowie_93 (B1), Usavi_97 (B1), Valjean_95 (B1), Vaticameos_94 (B1), Veritas_96 (B1), Virapocalypse_98 (B1), Virgeve_95 (B1), Vista_96 (B1), Vortex_95 (B1), Wallhey_98 (B1), Waterdiva_98 (B1), Weher20_94 (B1), Windsor_96 (B1), Xavier_96 (B1), Yoshand_98 (B1), YouGoGlencoco_97 (B1), Zaider_98 (B1), Zelda_97 (B1), Zonia_97 (B1),

Start 24:

- Found in 4 of 369 (1.1%) of genes in pham
- Manual Annotations of this start: 1 of 330
- Called 25.0% of time when present
- Phage (with cluster) where this start called: Kheth_84 (B2),

Start 25:

- Found in 29 of 369 (7.9%) of genes in pham
- Manual Annotations of this start: 17 of 330
- Called 58.6% of time when present
- Phage (with cluster) where this start called: Arbiter_81 (B2), Ares_84 (B2), Bananafish_85 (B2), Brownie5_84 (B2), FrenchFry_85 (B2), Glass_86 (B2), Godines_84 (B2), Hedgerow_84 (B2), Holeinone_84 (B2), ItsyBitsy1_81 (B2), LizLemon_84 (B2), Opia_85 (B2), Qyrzula_75 (B2), Rhinoforte_84 (B2), Rosebush_82 (B2), Sabella_84 (B2), Tinciduntolum_85 (B2),

Start 29:

- Found in 29 of 369 (7.9%) of genes in pham
- Manual Annotations of this start: 2 of 330
- Called 6.9% of time when present
- Phage (with cluster) where this start called: Tres_84 (B2), West99_84 (B2),

Start 30:

- Found in 3 of 369 (0.8%) of genes in pham
- Manual Annotations of this start: 3 of 330
- Called 100.0% of time when present
- Phage (with cluster) where this start called: Acadian_89 (B5), Donny_89 (B5), Suigeneris_90 (B5),

Start 33:

- Found in 1 of 369 (0.3%) of genes in pham
- Manual Annotations of this start: 1 of 330
- Called 100.0% of time when present
- Phage (with cluster) where this start called: Zenteno07_105 (B13),

Start 36:

- Found in 33 of 369 (8.9%) of genes in pham
- Manual Annotations of this start: 11 of 330
- Called 39.4% of time when present
- Phage (with cluster) where this start called: Allegro_84 (B2), Blocker23_84 (B2), Boyle_84 (B2), Calamitous_85 (B2), Coffee_83 (B2), Faze9_83 (B2), Kaleb_84 (B2), Lars_85 (B2), Laurie_83 (B2), Lephieur_84 (B2), MasterPo_85 (B2), Phantasmagoria_83 (B2), TA17A_85 (B2),

Start 37:

- Found in 6 of 369 (1.6%) of genes in pham
- Manual Annotations of this start: 3 of 330
- Called 100.0% of time when present
- Phage (with cluster) where this start called: 39HC_092 (B6), 40BC_092 (B6), AlanGrant_90 (B4), Jolie1_089 (B6), KayaCho_87 (B6), Vincenzo_89 (B4),

Start 38:

- Found in 44 of 369 (11.9%) of genes in pham

- Manual Annotations of this start: 3 of 330
- Called 18.2% of time when present
- Phage (with cluster) where this start called: DigitDog_91 (B5), Mysterious_90 (B5), Nangang_90 (B5), Phelemich_86 (B5), Reprobate_88 (B5), Serendipitous_89 (B5), SirJeffery_87 (B5), StinkyVeggy_87 (B5),

Start 39:

- Found in 1 of 369 (0.3%) of genes in pham
- Manual Annotations of this start: 1 of 330
- Called 100.0% of time when present
- Phage (with cluster) where this start called: Quesadilla_90 (B9),

Start 40:

- Found in 1 of 369 (0.3%) of genes in pham
- Manual Annotations of this start: 1 of 330
- Called 100.0% of time when present
- Phage (with cluster) where this start called: Imvubu_92 (B10),

Start 41:

- Found in 265 of 369 (71.8%) of genes in pham
- Manual Annotations of this start: 2 of 330
- Called 1.1% of time when present
- Phage (with cluster) where this start called: BirdsNest_104 (B13), Hashim76_103 (B13), Pops_94 (B1),

Start 46:

- Found in 2 of 369 (0.5%) of genes in pham
- Manual Annotations of this start: 2 of 330
- Called 100.0% of time when present
- Phage (with cluster) where this start called: Funsized_88 (B9), Knocker_87 (B9),

Start 47:

- Found in 46 of 369 (12.5%) of genes in pham
- Manual Annotations of this start: 43 of 330
- Called 100.0% of time when present
- Phage (with cluster) where this start called: Abinghost_96 (B3), Akoma_97 (B3), Athena_98 (B3), Audrey_96 (B3), Baloo_95 (B3), Ben11_96 (B3), Bernardo_93 (B3), Briakila_97 (B3), Casbah_96 (B3), ChaChing_96 (B3), Chandler_96 (B3), Compostia_95 (B3), Corofin_96 (B3), Daisy_95 (B3), Deenasa_97 (B3), Devonte_94 (B3), Gervas_97 (B3), GlenHope_97 (B3), Halfpint_96 (B3), HarveySr_93 (B3), Heathcliff_96 (B3), Jackstina_89 (B3), Kamiyu_96 (B3), Kronus_96 (B3), LestyG_94 (B3), Marley1013_94 (B3), MmasiCarm_97 (B3), Mortcellus_96 (B3), Morty007_94 (B3), Neos5_95 (B3), Nozo_96 (B3), Obutu_98 (B3), OrangeOswald_95 (B3), Phaedrus_91 (B3), Phayeta_98 (B3), Philly_95 (B3), Phlyer_96 (B3), Pipefish_95 (B3), RagingRooster_96 (B3), Rita1961_97 (B3), RomaT_96 (B3), SlippinJimmy_99 (B3), SynergyX_97 (B3), Tydolla_92 (B3), Yahalom_94 (B3), Yinz_94 (B3),

Start 48:

- Found in 3 of 369 (0.8%) of genes in pham
- Manual Annotations of this start: 3 of 330
- Called 100.0% of time when present
- Phage (with cluster) where this start called: CRB2_88 (B9), Indlovu_88 (B11), PenguinLover67_87 (B9),

Start 50:

- Found in 226 of 369 (61.2%) of genes in pham
- Manual Annotations of this start: 1 of 330
- Called 0.4% of time when present
- Phage (with cluster) where this start called: Saguaro_82 (B7),

Summary by clusters:

There are 11 clusters represented in this pham: B10, B11, B4, B5, B6, B7, B1, B2, B3, B9, B13,

Info for manual annotations of cluster B1:

- Start number 15 was manually annotated 236 times for cluster B1.
- Start number 41 was manually annotated 1 time for cluster B1.

Info for manual annotations of cluster B10:

- Start number 40 was manually annotated 1 time for cluster B10.

Info for manual annotations of cluster B11:

- Start number 48 was manually annotated 1 time for cluster B11.

Info for manual annotations of cluster B13:

- Start number 33 was manually annotated 1 time for cluster B13.
- Start number 41 was manually annotated 1 time for cluster B13.

Info for manual annotations of cluster B2:

- Start number 24 was manually annotated 1 time for cluster B2.
- Start number 25 was manually annotated 17 times for cluster B2.
- Start number 29 was manually annotated 2 times for cluster B2.
- Start number 36 was manually annotated 11 times for cluster B2.

Info for manual annotations of cluster B3:

- Start number 47 was manually annotated 43 times for cluster B3.

Info for manual annotations of cluster B4:

- Start number 37 was manually annotated 2 times for cluster B4.

Info for manual annotations of cluster B5:

- Start number 30 was manually annotated 3 times for cluster B5.
- Start number 38 was manually annotated 3 times for cluster B5.

Info for manual annotations of cluster B6:

- Start number 37 was manually annotated 1 time for cluster B6.

Info for manual annotations of cluster B7:

- Start number 50 was manually annotated 1 time for cluster B7.

Info for manual annotations of cluster B9:

- Start number 39 was manually annotated 1 time for cluster B9.
- Start number 46 was manually annotated 2 times for cluster B9.
- Start number 48 was manually annotated 2 times for cluster B9.

Gene Information:

Gene: 39HC_092 Start: 66926, Stop: 66300, Start Num: 37

Candidate Starts for 39HC_092:

(17, 67055), (Start: 37 @66926 has 3 MA's), (45, 66869), (64, 66740), (66, 66731), (71, 66710), (72, 66707), (78, 66638), (81, 66626), (92, 66485), (93, 66482), (95, 66464), (104, 66413), (111, 66356),

Gene: 40BC_092 Start: 66926, Stop: 66300, Start Num: 37

Candidate Starts for 40BC_092:

(17, 67055), (Start: 37 @66926 has 3 MA's), (45, 66869), (64, 66740), (66, 66731), (71, 66710), (72, 66707), (78, 66638), (81, 66626), (92, 66485), (93, 66482), (95, 66464), (104, 66413), (111, 66356),

Gene: ABU_95 Start: 67275, Stop: 66544, Start Num: 15

Candidate Starts for ABU_95:

(Start: 15 @67275 has 236 MA's), (18, 67236), (23, 67209), (34, 67122), (Start: 41 @67083 has 2 MA's), (Start: 50 @67041 has 1 MA's), (64, 66915), (68, 66894), (72, 66882), (78, 66810), (88, 66696), (93, 66657), (95, 66639),

Gene: Abinghost_96 Start: 65736, Stop: 65248, Start Num: 47

Candidate Starts for Abinghost_96:

(Start: 47 @65736 has 43 MA's), (58, 65697), (59, 65694), (64, 65619), (66, 65610), (74, 65568), (83, 65460), (86, 65418), (93, 65355), (95, 65337),

Gene: AbsoluteMadLad_95 Start: 67228, Stop: 66497, Start Num: 15

Candidate Starts for AbsoluteMadLad_95:

(Start: 15 @67228 has 236 MA's), (18, 67189), (23, 67162), (34, 67075), (Start: 41 @67036 has 2 MA's), (Start: 50 @66994 has 1 MA's), (64, 66868), (68, 66847), (72, 66835), (78, 66763), (88, 66649), (93, 66610), (95, 66592),

Gene: Acadian_89 Start: 66018, Stop: 65326, Start Num: 30

Candidate Starts for Acadian_89:

(2, 66897), (7, 66402), (20, 66072), (Start: 30 @66018 has 3 MA's), (Start: 38 @65943 has 3 MA's), (64, 65772), (66, 65763), (81, 65655), (90, 65538), (93, 65514), (95, 65496), (103, 65460), (112, 65379),

Gene: Adriana_97 Start: 67547, Stop: 66816, Start Num: 15

Candidate Starts for Adriana_97:

(Start: 15 @67547 has 236 MA's), (18, 67508), (23, 67481), (34, 67394), (Start: 41 @67355 has 2 MA's), (Start: 50 @67313 has 1 MA's), (64, 67187), (68, 67166), (72, 67154), (78, 67082), (88, 66968), (93, 66929), (95, 66911),

Gene: Aelin_96 Start: 66908, Stop: 66177, Start Num: 15

Candidate Starts for Aelin_96:

(10, 67127), (13, 67025), (Start: 15 @66908 has 236 MA's), (18, 66869), (23, 66842), (28, 66806), (34, 66755), (Start: 41 @66716 has 2 MA's), (64, 66548), (68, 66527), (72, 66515), (78, 66443), (88, 66329), (93, 66290), (95, 66272),

Gene: Akoma_97 Start: 65813, Stop: 65325, Start Num: 47

Candidate Starts for Akoma_97:

(Start: 47 @65813 has 43 MA's), (58, 65774), (59, 65771), (64, 65696), (66, 65687), (74, 65645), (83, 65537), (86, 65495), (93, 65432), (95, 65414),

Gene: AlanGrant_90 Start: 68004, Stop: 67411, Start Num: 37

Candidate Starts for AlanGrant_90:

(Start: 37 @68004 has 3 MA's), (58, 67911), (61, 67878), (72, 67800), (75, 67752), (81, 67716), (82, 67677), (85, 67635), (91, 67584), (93, 67572), (95, 67554), (100, 67524), (101, 67512), (104, 67500), (106, 67491),

Gene: Allegro_84 Start: 63711, Stop: 63181, Start Num: 36

Candidate Starts for Allegro_84:

(14, 63888), (Start: 25 @63777 has 17 MA's), (Start: 29 @63759 has 2 MA's), (Start: 36 @63711 has 11 MA's), (Start: 38 @63684 has 3 MA's), (42, 63657), (44, 63648), (54, 63606), (56, 63597), (64, 63501), (72, 63465), (78, 63393), (86, 63297), (87, 63291), (91, 63249), (93, 63237),

Gene: AltPhacts_94 Start: 66481, Stop: 65750, Start Num: 15

Candidate Starts for AltPhacts_94:

(10, 66700), (13, 66598), (Start: 15 @66481 has 236 MA's), (18, 66442), (23, 66415), (34, 66328), (Start: 41 @66289 has 2 MA's), (Start: 50 @66247 has 1 MA's), (64, 66121), (68, 66100), (72, 66088), (78, 66016), (88, 65902), (93, 65863), (95, 65845),

Gene: Altwerkus_94 Start: 66604, Stop: 65873, Start Num: 15

Candidate Starts for Altwerkus_94:

(Start: 15 @66604 has 236 MA's), (18, 66565), (23, 66538), (34, 66451), (Start: 41 @66412 has 2 MA's), (Start: 50 @66370 has 1 MA's), (64, 66244), (68, 66223), (72, 66211), (78, 66139), (88, 66025), (93, 65986), (95, 65968),

Gene: Anderson_98 Start: 67151, Stop: 66420, Start Num: 15

Candidate Starts for Anderson_98:

(Start: 15 @67151 has 236 MA's), (18, 67112), (23, 67085), (34, 66998), (Start: 41 @66959 has 2 MA's), (Start: 50 @66917 has 1 MA's), (64, 66791), (68, 66770), (72, 66758), (78, 66686), (88, 66572), (93, 66533), (95, 66515),

Gene: Andre_100 Start: 67542, Stop: 66811, Start Num: 15

Candidate Starts for Andre_100:

(Start: 15 @67542 has 236 MA's), (18, 67503), (23, 67476), (34, 67389), (Start: 41 @67350 has 2 MA's), (Start: 50 @67308 has 1 MA's), (64, 67182), (68, 67161), (72, 67149), (78, 67077), (88, 66963), (93, 66924), (95, 66906),

Gene: Antonia_96 Start: 66776, Stop: 66045, Start Num: 15

Candidate Starts for Antonia_96:

(10, 66995), (13, 66893), (Start: 15 @66776 has 236 MA's), (18, 66737), (23, 66710), (28, 66674), (34, 66623), (Start: 41 @66584 has 2 MA's), (64, 66416), (68, 66395), (72, 66383), (78, 66311), (88, 66197), (93, 66158), (95, 66140),

Gene: Apizium_95 Start: 66429, Stop: 65698, Start Num: 15

Candidate Starts for Apizium_95:

(8, 66681), (10, 66648), (13, 66546), (Start: 15 @66429 has 236 MA's), (18, 66390), (23, 66363), (34, 66276), (Start: 41 @66237 has 2 MA's), (64, 66069), (68, 66048), (72, 66036), (78, 65964), (88, 65850), (93, 65811), (95, 65793),

Gene: Arbiter_81 Start: 63817, Stop: 63221, Start Num: 25

Candidate Starts for Arbiter_81:

(14, 63928), (Start: 25 @63817 has 17 MA's), (Start: 29 @63799 has 2 MA's), (Start: 36 @63751 has 11 MA's), (Start: 38 @63724 has 3 MA's), (42, 63697), (44, 63688), (54, 63646), (56, 63637), (64,

63541), (72, 63505), (78, 63433), (86, 63337), (87, 63331), (91, 63289), (93, 63277),

Gene: Ares_84 Start: 63776, Stop: 63180, Start Num: 25

Candidate Starts for Ares_84:

(14, 63887), (Start: 25 @63776 has 17 MA's), (Start: 29 @63758 has 2 MA's), (Start: 36 @63710 has 11 MA's), (Start: 38 @63683 has 3 MA's), (42, 63656), (44, 63647), (54, 63605), (56, 63596), (64, 63500), (72, 63464), (78, 63392), (86, 63296), (87, 63290), (91, 63248), (93, 63236),

Gene: Ashraf_98 Start: 67284, Stop: 66532, Start Num: 15

Candidate Starts for Ashraf_98:

(10, 67503), (13, 67401), (Start: 15 @67284 has 236 MA's), (18, 67245), (34, 67131), (Start: 41 @67092 has 2 MA's), (64, 66924), (68, 66903), (72, 66891), (78, 66819), (88, 66705), (93, 66666), (95, 66648),

Gene: Athena_98 Start: 66509, Stop: 66021, Start Num: 47

Candidate Starts for Athena_98:

(Start: 47 @66509 has 43 MA's), (58, 66470), (59, 66467), (64, 66392), (66, 66383), (74, 66341), (83, 66233), (86, 66191), (93, 66128), (95, 66110),

Gene: Audrey_96 Start: 65763, Stop: 65275, Start Num: 47

Candidate Starts for Audrey_96:

(Start: 47 @65763 has 43 MA's), (58, 65724), (59, 65721), (64, 65646), (66, 65637), (74, 65595), (83, 65487), (86, 65445), (93, 65382), (95, 65364),

Gene: Badfish_97 Start: 67455, Stop: 66724, Start Num: 15

Candidate Starts for Badfish_97:

(Start: 15 @67455 has 236 MA's), (18, 67416), (23, 67389), (34, 67302), (Start: 41 @67263 has 2 MA's), (Start: 50 @67221 has 1 MA's), (64, 67095), (68, 67074), (72, 67062), (78, 66990), (88, 66876), (93, 66837), (95, 66819),

Gene: Baloo_95 Start: 65616, Stop: 65128, Start Num: 47

Candidate Starts for Baloo_95:

(Start: 47 @65616 has 43 MA's), (58, 65577), (59, 65574), (64, 65499), (66, 65490), (74, 65448), (83, 65340), (86, 65298), (93, 65235), (95, 65217),

Gene: Bananafish_85 Start: 63713, Stop: 63117, Start Num: 25

Candidate Starts for Bananafish_85:

(14, 63824), (Start: 25 @63713 has 17 MA's), (Start: 29 @63695 has 2 MA's), (Start: 36 @63647 has 11 MA's), (Start: 38 @63620 has 3 MA's), (42, 63593), (44, 63584), (54, 63542), (56, 63533), (64, 63437), (72, 63401), (78, 63329), (86, 63233), (87, 63227), (91, 63185), (93, 63173),

Gene: Banjo_93 Start: 66721, Stop: 65990, Start Num: 15

Candidate Starts for Banjo_93:

(Start: 15 @66721 has 236 MA's), (18, 66682), (23, 66655), (34, 66568), (Start: 41 @66529 has 2 MA's), (Start: 50 @66487 has 1 MA's), (64, 66361), (68, 66340), (72, 66328), (78, 66256), (88, 66142), (93, 66103), (95, 66085),

Gene: Basato_95 Start: 66941, Stop: 66210, Start Num: 15

Candidate Starts for Basato_95:

(Start: 15 @66941 has 236 MA's), (18, 66902), (23, 66875), (34, 66788), (Start: 41 @66749 has 2 MA's), (64, 66581), (68, 66560), (72, 66548), (78, 66476), (88, 66362), (93, 66323), (95, 66305),

Gene: BatteryCK_95 Start: 66711, Stop: 65980, Start Num: 15

Candidate Starts for BatteryCK_95:

(10, 66930), (13, 66828), (Start: 15 @66711 has 236 MA's), (18, 66672), (34, 66558), (Start: 41 @66519 has 2 MA's), (64, 66351), (68, 66330), (72, 66318), (78, 66246), (88, 66132), (93, 66093), (95, 66075),

Gene: Beaglebox_93 Start: 66843, Stop: 66112, Start Num: 15

Candidate Starts for Beaglebox_93:

(Start: 15 @66843 has 236 MA's), (18, 66804), (23, 66777), (34, 66690), (Start: 41 @66651 has 2 MA's), (Start: 50 @66609 has 1 MA's), (64, 66483), (68, 66462), (72, 66450), (78, 66378), (88, 66264), (93, 66225), (95, 66207),

Gene: Ben11_96 Start: 65993, Stop: 65505, Start Num: 47

Candidate Starts for Ben11_96:

(Start: 47 @65993 has 43 MA's), (58, 65954), (59, 65951), (64, 65876), (66, 65867), (74, 65825), (83, 65717), (86, 65675), (93, 65612), (95, 65594),

Gene: Bernardo_93 Start: 65287, Stop: 64799, Start Num: 47

Candidate Starts for Bernardo_93:

(Start: 47 @65287 has 43 MA's), (58, 65248), (59, 65245), (64, 65170), (66, 65161), (74, 65119), (83, 65011), (86, 64969), (93, 64906), (95, 64888),

Gene: BirdsNest_104 Start: 70091, Stop: 69573, Start Num: 41

Candidate Starts for BirdsNest_104:

(Start: 41 @70091 has 2 MA's), (43, 70070), (49, 70049), (55, 70022), (56, 70019), (72, 69890), (74, 69872), (78, 69815), (80, 69806), (93, 69656),

Gene: Bishoperium_97 Start: 67290, Stop: 66559, Start Num: 15

Candidate Starts for Bishoperium_97:

(Start: 15 @67290 has 236 MA's), (18, 67251), (23, 67224), (34, 67137), (Start: 41 @67098 has 2 MA's), (Start: 50 @67056 has 1 MA's), (64, 66930), (68, 66909), (72, 66897), (78, 66825), (88, 66711), (93, 66672), (95, 66654),

Gene: BlackStallion_96 Start: 67139, Stop: 66408, Start Num: 15

Candidate Starts for BlackStallion_96:

(Start: 15 @67139 has 236 MA's), (18, 67100), (23, 67073), (34, 66986), (Start: 41 @66947 has 2 MA's), (Start: 50 @66905 has 1 MA's), (64, 66779), (68, 66758), (72, 66746), (78, 66674), (88, 66560), (93, 66521), (95, 66503),

Gene: Blocker23_84 Start: 63711, Stop: 63181, Start Num: 36

Candidate Starts for Blocker23_84:

(1, 65055), (3, 64545), (5, 64293), (9, 64113), (12, 63984), (Start: 24 @63789 has 1 MA's), (Start: 36 @63711 has 11 MA's), (Start: 38 @63684 has 3 MA's), (42, 63657), (44, 63648), (54, 63606), (56, 63597), (64, 63501), (72, 63465), (78, 63393), (86, 63297), (87, 63291), (91, 63249), (93, 63237),

Gene: Bluephacebaby_96 Start: 67324, Stop: 66593, Start Num: 15

Candidate Starts for Bluephacebaby_96:

(Start: 15 @67324 has 236 MA's), (18, 67285), (23, 67258), (34, 67171), (Start: 41 @67132 has 2 MA's), (Start: 50 @67090 has 1 MA's), (64, 66964), (68, 66943), (72, 66931), (78, 66859), (88, 66745), (93, 66706), (95, 66688),

Gene: Boyle_84 Start: 63759, Stop: 63229, Start Num: 36

Candidate Starts for Boyle_84:

(14, 63936), (Start: 25 @63825 has 17 MA's), (Start: 29 @63807 has 2 MA's), (Start: 36 @63759 has 11 MA's), (Start: 38 @63732 has 3 MA's), (42, 63705), (44, 63696), (54, 63654), (56, 63645), (64, 63549), (72, 63513), (78, 63441), (86, 63345), (87, 63339), (91, 63297), (93, 63285),

Gene: Briakila_97 Start: 66267, Stop: 65779, Start Num: 47

Candidate Starts for Briakila_97:

(Start: 47 @66267 has 43 MA's), (58, 66228), (59, 66225), (64, 66150), (66, 66141), (74, 66099), (83, 65991), (86, 65949), (93, 65886), (95, 65868),

Gene: Brilliant_100 Start: 67303, Stop: 66572, Start Num: 15

Candidate Starts for Brilliant_100:

(Start: 15 @67303 has 236 MA's), (18, 67264), (23, 67237), (34, 67150), (Start: 41 @67111 has 2 MA's), (Start: 50 @67069 has 1 MA's), (64, 66943), (68, 66922), (72, 66910), (78, 66838), (88, 66724), (93, 66685), (95, 66667),

Gene: Brownie5_84 Start: 63825, Stop: 63229, Start Num: 25

Candidate Starts for Brownie5_84:

(14, 63936), (Start: 25 @63825 has 17 MA's), (Start: 29 @63807 has 2 MA's), (Start: 36 @63759 has 11 MA's), (Start: 38 @63732 has 3 MA's), (42, 63705), (44, 63696), (54, 63654), (56, 63645), (64, 63549), (72, 63513), (78, 63441), (86, 63345), (87, 63339), (91, 63297), (93, 63285),

Gene: Buckeye_95 Start: 67599, Stop: 66868, Start Num: 15

Candidate Starts for Buckeye_95:

(Start: 15 @67599 has 236 MA's), (18, 67560), (23, 67533), (34, 67446), (Start: 41 @67407 has 2 MA's), (Start: 50 @67365 has 1 MA's), (64, 67239), (68, 67218), (72, 67206), (78, 67134), (88, 67020), (93, 66981), (95, 66963),

Gene: Burr_99 Start: 67145, Stop: 66414, Start Num: 15

Candidate Starts for Burr_99:

(Start: 15 @67145 has 236 MA's), (18, 67106), (23, 67079), (34, 66992), (Start: 41 @66953 has 2 MA's), (Start: 50 @66911 has 1 MA's), (64, 66785), (68, 66764), (72, 66752), (78, 66680), (88, 66566), (93, 66527), (95, 66509),

Gene: CRB2_88 Start: 67867, Stop: 67412, Start Num: 48

Candidate Starts for CRB2_88:

(6, 68446), (11, 68266), (Start: 48 @67867 has 3 MA's), (51, 67858), (55, 67840), (65, 67735), (71, 67708), (78, 67633), (80, 67624), (81, 67621), (91, 67492), (93, 67480), (95, 67462),

Gene: Calamitous_85 Start: 63642, Stop: 63112, Start Num: 36

Candidate Starts for Calamitous_85:

(14, 63819), (Start: 25 @63708 has 17 MA's), (Start: 29 @63690 has 2 MA's), (Start: 36 @63642 has 11 MA's), (Start: 38 @63615 has 3 MA's), (42, 63588), (44, 63579), (54, 63537), (56, 63528), (64, 63432), (72, 63396), (78, 63324), (86, 63228), (87, 63222), (91, 63180), (93, 63168),

Gene: CamL_97 Start: 67075, Stop: 66344, Start Num: 15

Candidate Starts for CamL_97:

(Start: 15 @67075 has 236 MA's), (18, 67036), (23, 67009), (34, 66922), (Start: 41 @66883 has 2 MA's), (Start: 50 @66841 has 1 MA's), (64, 66715), (68, 66694), (72, 66682), (78, 66610), (88, 66496), (93, 66457), (95, 66439),

Gene: CampRoach_96 Start: 67171, Stop: 66440, Start Num: 15

Candidate Starts for CampRoach_96:

(Start: 15 @67171 has 236 MA's), (18, 67132), (23, 67105), (Start: 41 @66979 has 2 MA's), (Start: 50 @66937 has 1 MA's), (64, 66811), (68, 66790), (72, 66778), (78, 66706), (88, 66592), (93, 66553), (95, 66535),

Gene: Cannibal_97 Start: 67178, Stop: 66447, Start Num: 15

Candidate Starts for Cannibal_97:

(Start: 15 @67178 has 236 MA's), (18, 67139), (23, 67112), (34, 67025), (Start: 41 @66986 has 2 MA's), (Start: 50 @66944 has 1 MA's), (64, 66818), (68, 66797), (72, 66785), (78, 66713), (88, 66599), (93, 66560), (95, 66542),

Gene: Carthage_97 Start: 66633, Stop: 65902, Start Num: 15

Candidate Starts for Carthage_97:

(Start: 15 @66633 has 236 MA's), (23, 66567), (34, 66480), (Start: 41 @66441 has 2 MA's), (64, 66273), (68, 66252), (72, 66240), (88, 66054), (93, 66015), (95, 65997),

Gene: Casbah_96 Start: 66078, Stop: 65590, Start Num: 47

Candidate Starts for Casbah_96:

(Start: 47 @66078 has 43 MA's), (58, 66039), (59, 66036), (64, 65961), (66, 65952), (74, 65910), (83, 65802), (86, 65760), (93, 65697), (95, 65679),

Gene: ChaChing_96 Start: 65776, Stop: 65288, Start Num: 47

Candidate Starts for ChaChing_96:

(Start: 47 @65776 has 43 MA's), (58, 65737), (59, 65734), (64, 65659), (66, 65650), (74, 65608), (83, 65500), (86, 65458), (93, 65395), (95, 65377),

Gene: Chaelin_97 Start: 67047, Stop: 66295, Start Num: 15

Candidate Starts for Chaelin_97:

(10, 67266), (13, 67164), (Start: 15 @67047 has 236 MA's), (18, 67008), (34, 66894), (Start: 41 @66855 has 2 MA's), (64, 66687), (68, 66666), (72, 66654), (78, 66582), (88, 66468), (93, 66429), (95, 66411),

Gene: Chah_99 Start: 66875, Stop: 66144, Start Num: 15

Candidate Starts for Chah_99:

(Start: 15 @66875 has 236 MA's), (18, 66836), (23, 66809), (34, 66722), (Start: 41 @66683 has 2 MA's), (Start: 50 @66641 has 1 MA's), (64, 66515), (68, 66494), (72, 66482), (78, 66410), (88, 66296), (93, 66257), (95, 66239),

Gene: Chandler_96 Start: 66552, Stop: 66064, Start Num: 47

Candidate Starts for Chandler_96:

(Start: 47 @66552 has 43 MA's), (58, 66513), (59, 66510), (64, 66435), (66, 66426), (74, 66384), (83, 66276), (86, 66234), (93, 66171), (95, 66153),

Gene: Charles1_100 Start: 67453, Stop: 66722, Start Num: 15

Candidate Starts for Charles1_100:

(Start: 15 @67453 has 236 MA's), (18, 67414), (23, 67387), (34, 67300), (Start: 41 @67261 has 2 MA's), (Start: 50 @67219 has 1 MA's), (64, 67093), (68, 67072), (72, 67060), (78, 66988), (88, 66874), (93, 66835), (95, 66817),

Gene: CharlieGBrown_95 Start: 66806, Stop: 66075, Start Num: 15

Candidate Starts for CharlieGBrown_95:

(10, 67025), (13, 66923), (Start: 15 @66806 has 236 MA's), (18, 66767), (34, 66653), (Start: 41 @66614 has 2 MA's), (64, 66446), (68, 66425), (72, 66413), (78, 66341), (88, 66227), (93, 66188), (95, 66170),

Gene: CheetO_93 Start: 66925, Stop: 66194, Start Num: 15

Candidate Starts for CheetO_93:

(Start: 15 @66925 has 236 MA's), (18, 66886), (23, 66859), (34, 66772), (Start: 41 @66733 has 2 MA's), (Start: 50 @66691 has 1 MA's), (64, 66565), (68, 66544), (72, 66532), (78, 66460), (88, 66346), (93, 66307), (95, 66289),

Gene: Cher_97 Start: 67279, Stop: 66548, Start Num: 15

Candidate Starts for Cher_97:

(Start: 15 @67279 has 236 MA's), (18, 67240), (23, 67213), (34, 67126), (Start: 41 @67087 has 2 MA's), (Start: 50 @67045 has 1 MA's), (64, 66919), (68, 66898), (72, 66886), (78, 66814), (88, 66700), (93, 66661), (95, 66643),

Gene: Childish_97 Start: 67469, Stop: 66738, Start Num: 15

Candidate Starts for Childish_97:

(Start: 15 @67469 has 236 MA's), (18, 67430), (23, 67403), (34, 67316), (Start: 41 @67277 has 2 MA's), (Start: 50 @67235 has 1 MA's), (64, 67109), (68, 67088), (72, 67076), (78, 67004), (88, 66890), (93, 66851), (95, 66833),

Gene: Chorkpop_98 Start: 66931, Stop: 66200, Start Num: 15

Candidate Starts for Chorkpop_98:

(Start: 15 @66931 has 236 MA's), (18, 66892), (23, 66865), (Start: 41 @66739 has 2 MA's), (Start: 50 @66697 has 1 MA's), (64, 66571), (68, 66550), (72, 66538), (78, 66466), (88, 66352), (93, 66313), (95, 66295),

Gene: Chute_97 Start: 67470, Stop: 66739, Start Num: 15

Candidate Starts for Chute_97:

(Start: 15 @67470 has 236 MA's), (18, 67431), (23, 67404), (34, 67317), (Start: 41 @67278 has 2 MA's), (Start: 50 @67236 has 1 MA's), (64, 67110), (68, 67089), (72, 67077), (78, 67005), (88, 66891), (93, 66852), (95, 66834),

Gene: Cobra_97 Start: 67300, Stop: 66569, Start Num: 15

Candidate Starts for Cobra_97:

(Start: 15 @67300 has 236 MA's), (18, 67261), (23, 67234), (34, 67147), (Start: 41 @67108 has 2 MA's), (Start: 50 @67066 has 1 MA's), (64, 66940), (68, 66919), (72, 66907), (78, 66835), (88, 66721), (93, 66682), (95, 66664),

Gene: Coffee_83 Start: 63752, Stop: 63222, Start Num: 36

Candidate Starts for Coffee_83:

(14, 63929), (Start: 25 @63818 has 17 MA's), (Start: 29 @63800 has 2 MA's), (Start: 36 @63752 has 11 MA's), (Start: 38 @63725 has 3 MA's), (42, 63698), (44, 63689), (54, 63647), (56, 63638), (64, 63542), (72, 63506), (78, 63434), (86, 63338), (87, 63332), (91, 63290), (93, 63278),

Gene: Colbert_95 Start: 66199, Stop: 65468, Start Num: 15

Candidate Starts for Colbert_95:

(Start: 15 @66199 has 236 MA's), (18, 66160), (23, 66133), (34, 66046), (Start: 41 @66007 has 2 MA's), (Start: 50 @65965 has 1 MA's), (64, 65839), (68, 65818), (72, 65806), (78, 65734), (88, 65620), (93, 65581), (95, 65563),

Gene: Coletti_99 Start: 67826, Stop: 67095, Start Num: 15

Candidate Starts for Coletti_99:

(Start: 15 @67826 has 236 MA's), (18, 67787), (23, 67760), (34, 67673), (Start: 41 @67634 has 2 MA's), (Start: 50 @67592 has 1 MA's), (64, 67466), (68, 67445), (72, 67433), (78, 67361), (88, 67247),

(93, 67208), (95, 67190),

Gene: Compostia_95 Start: 66230, Stop: 65742, Start Num: 47

Candidate Starts for Compostia_95:

(Start: 47 @66230 has 43 MA's), (58, 66191), (59, 66188), (64, 66113), (66, 66104), (74, 66062), (83, 65954), (86, 65912), (93, 65849), (95, 65831),

Gene: Cornobble_96 Start: 66927, Stop: 66196, Start Num: 15

Candidate Starts for Cornobble_96:

(10, 67146), (13, 67044), (Start: 15 @66927 has 236 MA's), (18, 66888), (23, 66861), (28, 66825), (34, 66774), (Start: 41 @66735 has 2 MA's), (64, 66567), (68, 66546), (72, 66534), (78, 66462), (88, 66348), (93, 66309), (95, 66291),

Gene: Corofin_96 Start: 65787, Stop: 65299, Start Num: 47

Candidate Starts for Corofin_96:

(Start: 47 @65787 has 43 MA's), (58, 65748), (59, 65745), (64, 65670), (66, 65661), (74, 65619), (83, 65511), (86, 65469), (93, 65406), (95, 65388),

Gene: Cosmolli16_98 Start: 67403, Stop: 66672, Start Num: 15

Candidate Starts for Cosmolli16_98:

(Start: 15 @67403 has 236 MA's), (18, 67364), (23, 67337), (34, 67250), (Start: 41 @67211 has 2 MA's), (Start: 50 @67169 has 1 MA's), (64, 67043), (68, 67022), (72, 67010), (78, 66938), (88, 66824), (93, 66785), (95, 66767),

Gene: Craff_98 Start: 67688, Stop: 66957, Start Num: 15

Candidate Starts for Craff_98:

(Start: 15 @67688 has 236 MA's), (18, 67649), (23, 67622), (34, 67535), (Start: 41 @67496 has 2 MA's), (Start: 50 @67454 has 1 MA's), (64, 67328), (68, 67307), (72, 67295), (78, 67223), (88, 67109), (93, 67070), (95, 67052),

Gene: Crownjwl_94 Start: 66943, Stop: 66212, Start Num: 15

Candidate Starts for Crownjwl_94:

(Start: 15 @66943 has 236 MA's), (18, 66904), (23, 66877), (34, 66790), (Start: 41 @66751 has 2 MA's), (Start: 50 @66709 has 1 MA's), (64, 66583), (68, 66562), (72, 66550), (78, 66478), (88, 66364), (93, 66325), (95, 66307),

Gene: DaddyDaniels_100 Start: 67422, Stop: 66691, Start Num: 15

Candidate Starts for DaddyDaniels_100:

(Start: 15 @67422 has 236 MA's), (18, 67383), (23, 67356), (34, 67269), (Start: 41 @67230 has 2 MA's), (Start: 50 @67188 has 1 MA's), (64, 67062), (68, 67041), (72, 67029), (78, 66957), (88, 66843), (93, 66804), (95, 66786),

Gene: Daffy_96 Start: 66916, Stop: 66185, Start Num: 15

Candidate Starts for Daffy_96:

(Start: 15 @66916 has 236 MA's), (18, 66877), (23, 66850), (34, 66763), (Start: 41 @66724 has 2 MA's), (Start: 50 @66682 has 1 MA's), (64, 66556), (68, 66535), (72, 66523), (78, 66451), (88, 66337), (93, 66298), (95, 66280),

Gene: Daisy_95 Start: 65336, Stop: 64848, Start Num: 47

Candidate Starts for Daisy_95:

(Start: 47 @65336 has 43 MA's), (58, 65297), (59, 65294), (64, 65219), (66, 65210), (74, 65168), (83, 65060), (86, 65018), (93, 64955), (95, 64937),

Gene: Daka_98 Start: 66879, Stop: 66148, Start Num: 15

Candidate Starts for Daka_98:

(10, 67098), (13, 66996), (Start: 15 @66879 has 236 MA's), (18, 66840), (23, 66813), (28, 66777), (34, 66726), (Start: 41 @66687 has 2 MA's), (64, 66519), (68, 66498), (72, 66486), (88, 66300), (93, 66261), (95, 66243),

Gene: Dati_94 Start: 67101, Stop: 66370, Start Num: 15

Candidate Starts for Dati_94:

(Start: 15 @67101 has 236 MA's), (18, 67062), (23, 67035), (34, 66948), (Start: 41 @66909 has 2 MA's), (Start: 50 @66867 has 1 MA's), (64, 66741), (68, 66720), (72, 66708), (78, 66636), (88, 66522), (93, 66483), (95, 66465),

Gene: Deenasa_97 Start: 66990, Stop: 66502, Start Num: 47

Candidate Starts for Deenasa_97:

(Start: 47 @66990 has 43 MA's), (58, 66951), (59, 66948), (64, 66873), (66, 66864), (74, 66822), (83, 66714), (86, 66672), (93, 66609), (95, 66591),

Gene: DelRivs_96 Start: 66730, Stop: 65999, Start Num: 15

Candidate Starts for DelRivs_96:

(Start: 15 @66730 has 236 MA's), (18, 66691), (23, 66664), (34, 66577), (Start: 41 @66538 has 2 MA's), (Start: 50 @66496 has 1 MA's), (64, 66370), (68, 66349), (72, 66337), (78, 66265), (88, 66151), (93, 66112), (95, 66094),

Gene: Derpp_96 Start: 66839, Stop: 66108, Start Num: 15

Candidate Starts for Derpp_96:

(10, 67058), (13, 66956), (Start: 15 @66839 has 236 MA's), (18, 66800), (34, 66686), (Start: 41 @66647 has 2 MA's), (64, 66479), (68, 66458), (72, 66446), (78, 66374), (88, 66260), (93, 66221), (95, 66203),

Gene: Devonte_94 Start: 65402, Stop: 64914, Start Num: 47

Candidate Starts for Devonte_94:

(Start: 47 @65402 has 43 MA's), (58, 65363), (59, 65360), (64, 65285), (66, 65276), (74, 65234), (83, 65126), (86, 65084), (93, 65021), (95, 65003),

Gene: Dice_97 Start: 66762, Stop: 66031, Start Num: 15

Candidate Starts for Dice_97:

(Start: 15 @66762 has 236 MA's), (18, 66723), (23, 66696), (34, 66609), (Start: 41 @66570 has 2 MA's), (Start: 50 @66528 has 1 MA's), (64, 66402), (68, 66381), (72, 66369), (78, 66297), (88, 66183), (93, 66144), (95, 66126),

Gene: DigitDog_91 Start: 66458, Stop: 65841, Start Num: 38

Candidate Starts for DigitDog_91:

(7, 66893), (20, 66563), (Start: 38 @66458 has 3 MA's), (64, 66290), (66, 66281), (81, 66173), (90, 66056), (93, 66032), (95, 66014), (110, 65921),

Gene: Dingo_93 Start: 66204, Stop: 65473, Start Num: 15

Candidate Starts for Dingo_93:

(Start: 15 @66204 has 236 MA's), (18, 66165), (23, 66138), (34, 66051), (Start: 41 @66012 has 2 MA's), (64, 65844), (68, 65823), (72, 65811), (78, 65739), (88, 65625), (93, 65586), (95, 65568),

Gene: Dione_95 Start: 66482, Stop: 65751, Start Num: 15

Candidate Starts for Dione_95:

(Start: 15 @66482 has 236 MA's), (18, 66443), (23, 66416), (34, 66329), (Start: 41 @66290 has 2 MA's), (Start: 50 @66248 has 1 MA's), (64, 66122), (68, 66101), (72, 66089), (78, 66017), (88, 65903), (93, 65864), (95, 65846),

Gene: DirtJuice_98 Start: 67591, Stop: 66860, Start Num: 15

Candidate Starts for DirtJuice_98:

(Start: 15 @67591 has 236 MA's), (18, 67552), (23, 67525), (34, 67438), (Start: 41 @67399 has 2 MA's), (Start: 50 @67357 has 1 MA's), (64, 67231), (68, 67210), (72, 67198), (78, 67126), (88, 67012), (93, 66973), (95, 66955),

Gene: Doddsville_94 Start: 66922, Stop: 66191, Start Num: 15

Candidate Starts for Doddsville_94:

(Start: 15 @66922 has 236 MA's), (18, 66883), (23, 66856), (34, 66769), (Start: 41 @66730 has 2 MA's), (Start: 50 @66688 has 1 MA's), (64, 66562), (68, 66541), (72, 66529), (78, 66457), (88, 66343), (93, 66304), (95, 66286),

Gene: DoesntMatter_94 Start: 66756, Stop: 66025, Start Num: 15

Candidate Starts for DoesntMatter_94:

(Start: 15 @66756 has 236 MA's), (18, 66717), (23, 66690), (34, 66603), (Start: 41 @66564 has 2 MA's), (Start: 50 @66522 has 1 MA's), (64, 66396), (68, 66375), (72, 66363), (78, 66291), (88, 66177), (93, 66138), (95, 66120),

Gene: DonSanchon_92 Start: 66440, Stop: 65709, Start Num: 15

Candidate Starts for DonSanchon_92:

(Start: 15 @66440 has 236 MA's), (18, 66401), (23, 66374), (34, 66287), (Start: 41 @66248 has 2 MA's), (Start: 50 @66206 has 1 MA's), (64, 66080), (68, 66059), (72, 66047), (78, 65975), (88, 65861), (93, 65822), (95, 65804),

Gene: Donny_89 Start: 65845, Stop: 65159, Start Num: 30

Candidate Starts for Donny_89:

(2, 66724), (7, 66229), (20, 65899), (Start: 30 @65845 has 3 MA's), (Start: 38 @65770 has 3 MA's), (64, 65605), (66, 65596), (81, 65488), (90, 65371), (93, 65347), (95, 65329), (103, 65293), (112, 65212),

Gene: DuchessDung_94 Start: 66437, Stop: 65706, Start Num: 15

Candidate Starts for DuchessDung_94:

(Start: 15 @66437 has 236 MA's), (18, 66398), (23, 66371), (Start: 41 @66245 has 2 MA's), (64, 66077), (68, 66056), (72, 66044), (78, 65972), (88, 65858), (93, 65819), (95, 65801),

Gene: Duggie_97 Start: 67064, Stop: 66333, Start Num: 15

Candidate Starts for Duggie_97:

(Start: 15 @67064 has 236 MA's), (18, 67025), (23, 66998), (34, 66911), (Start: 41 @66872 has 2 MA's), (Start: 50 @66830 has 1 MA's), (64, 66704), (68, 66683), (72, 66671), (78, 66599), (88, 66485), (93, 66446), (95, 66428),

Gene: Durga_99 Start: 67545, Stop: 66814, Start Num: 15

Candidate Starts for Durga_99:

(Start: 15 @67545 has 236 MA's), (18, 67506), (23, 67479), (Start: 41 @67353 has 2 MA's), (Start: 50 @67311 has 1 MA's), (64, 67185), (68, 67164), (72, 67152), (78, 67080), (88, 66966), (93, 66927), (95, 66909),

Gene: Emiris_99 Start: 67452, Stop: 66721, Start Num: 15

Candidate Starts for Emiris_99:

(Start: 15 @67452 has 236 MA's), (18, 67413), (23, 67386), (34, 67299), (Start: 41 @67260 has 2 MA's), (Start: 50 @67218 has 1 MA's), (64, 67092), (68, 67071), (72, 67059), (78, 66987), (88, 66873), (93, 66834), (95, 66816),

Gene: EmpTee_96 Start: 66853, Stop: 66122, Start Num: 15

Candidate Starts for EmpTee_96:

(Start: 15 @66853 has 236 MA's), (18, 66814), (23, 66787), (34, 66700), (Start: 41 @66661 has 2 MA's), (Start: 50 @66619 has 1 MA's), (64, 66493), (68, 66472), (72, 66460), (78, 66388), (88, 66274), (93, 66235), (95, 66217),

Gene: Eremos_94 Start: 66900, Stop: 66169, Start Num: 15

Candidate Starts for Eremos_94:

(Start: 15 @66900 has 236 MA's), (18, 66861), (23, 66834), (34, 66747), (Start: 41 @66708 has 2 MA's), (Start: 50 @66666 has 1 MA's), (64, 66540), (68, 66519), (72, 66507), (88, 66321), (93, 66282), (95, 66264),

Gene: Etaye_96 Start: 67629, Stop: 66898, Start Num: 15

Candidate Starts for Etaye_96:

(Start: 15 @67629 has 236 MA's), (18, 67590), (23, 67563), (34, 67476), (Start: 41 @67437 has 2 MA's), (Start: 50 @67395 has 1 MA's), (64, 67269), (68, 67248), (72, 67236), (78, 67164), (88, 67050), (93, 67011), (95, 66993),

Gene: Eugenia_99 Start: 67564, Stop: 66833, Start Num: 15

Candidate Starts for Eugenia_99:

(Start: 15 @67564 has 236 MA's), (18, 67525), (23, 67498), (34, 67411), (Start: 41 @67372 has 2 MA's), (Start: 50 @67330 has 1 MA's), (64, 67204), (68, 67183), (72, 67171), (78, 67099), (88, 66985), (93, 66946), (95, 66928),

Gene: Fang_97 Start: 66994, Stop: 66263, Start Num: 15

Candidate Starts for Fang_97:

(Start: 15 @66994 has 236 MA's), (18, 66955), (23, 66928), (34, 66841), (Start: 41 @66802 has 2 MA's), (Start: 50 @66760 has 1 MA's), (64, 66634), (68, 66613), (72, 66601), (78, 66529), (88, 66415), (93, 66376), (95, 66358),

Gene: Faze9_83 Start: 63774, Stop: 63244, Start Num: 36

Candidate Starts for Faze9_83:

(14, 63951), (Start: 25 @63840 has 17 MA's), (Start: 29 @63822 has 2 MA's), (Start: 36 @63774 has 11 MA's), (Start: 38 @63747 has 3 MA's), (42, 63720), (44, 63711), (54, 63669), (56, 63660), (64, 63564), (72, 63528), (78, 63456), (86, 63360), (87, 63354), (91, 63312), (93, 63300),

Gene: FluffyNinja_98 Start: 67141, Stop: 66410, Start Num: 15

Candidate Starts for FluffyNinja_98:

(Start: 15 @67141 has 236 MA's), (18, 67102), (23, 67075), (34, 66988), (Start: 41 @66949 has 2 MA's), (Start: 50 @66907 has 1 MA's), (64, 66781), (68, 66760), (72, 66748), (78, 66676), (88, 66562), (93, 66523), (95, 66505),

Gene: Fozzie_93 Start: 67190, Stop: 66459, Start Num: 15

Candidate Starts for Fozzie_93:

(Start: 15 @67190 has 236 MA's), (18, 67151), (23, 67124), (Start: 41 @66998 has 2 MA's), (Start: 50 @66956 has 1 MA's), (64, 66830), (68, 66809), (72, 66797), (78, 66725), (88, 66611), (93, 66572), (95, 66554),

Gene: Frankicide_94 Start: 66690, Stop: 65959, Start Num: 15

Candidate Starts for Frankicide_94:

(10, 66909), (13, 66807), (Start: 15 @66690 has 236 MA's), (18, 66651), (23, 66624), (28, 66588), (34, 66537), (Start: 41 @66498 has 2 MA's), (Start: 50 @66456 has 1 MA's), (64, 66330), (68, 66309), (72, 66297), (78, 66225), (88, 66111), (93, 66072), (95, 66054),

Gene: FrenchFry_85 Start: 63827, Stop: 63231, Start Num: 25

Candidate Starts for FrenchFry_85:

(14, 63938), (Start: 25 @63827 has 17 MA's), (Start: 29 @63809 has 2 MA's), (Start: 36 @63761 has 11 MA's), (Start: 38 @63734 has 3 MA's), (42, 63707), (44, 63698), (54, 63656), (56, 63647), (64, 63551), (72, 63515), (78, 63443), (86, 63347), (87, 63341), (91, 63299), (93, 63287),

Gene: Freya_93 Start: 66460, Stop: 65729, Start Num: 15

Candidate Starts for Freya_93:

(Start: 15 @66460 has 236 MA's), (18, 66421), (23, 66394), (34, 66307), (Start: 41 @66268 has 2 MA's), (Start: 50 @66226 has 1 MA's), (64, 66100), (68, 66079), (72, 66067), (78, 65995), (88, 65881), (93, 65842), (95, 65824),

Gene: FriarPreacher_94 Start: 66839, Stop: 66108, Start Num: 15

Candidate Starts for FriarPreacher_94:

(Start: 15 @66839 has 236 MA's), (18, 66800), (23, 66773), (34, 66686), (Start: 41 @66647 has 2 MA's), (Start: 50 @66605 has 1 MA's), (64, 66479), (68, 66458), (72, 66446), (78, 66374), (88, 66260), (93, 66221), (95, 66203),

Gene: Fringe_101 Start: 67616, Stop: 66885, Start Num: 15

Candidate Starts for Fringe_101:

(Start: 15 @67616 has 236 MA's), (18, 67577), (23, 67550), (34, 67463), (Start: 41 @67424 has 2 MA's), (Start: 50 @67382 has 1 MA's), (64, 67256), (68, 67235), (72, 67223), (78, 67151), (88, 67037), (93, 66998), (95, 66980),

Gene: FugateOSU_97 Start: 67901, Stop: 67170, Start Num: 15

Candidate Starts for FugateOSU_97:

(Start: 15 @67901 has 236 MA's), (18, 67862), (23, 67835), (34, 67748), (Start: 41 @67709 has 2 MA's), (Start: 50 @67667 has 1 MA's), (64, 67541), (68, 67520), (72, 67508), (78, 67436), (88, 67322), (93, 67283), (95, 67265),

Gene: Funsized_88 Start: 68273, Stop: 67824, Start Num: 46

Candidate Starts for Funsized_88:

(34, 68339), (35, 68333), (Start: 46 @68273 has 2 MA's), (64, 68144), (65, 68138), (71, 68114), (91, 67898), (93, 67886), (95, 67868), (96, 67856),

Gene: Gareth_97 Start: 67290, Stop: 66559, Start Num: 15

Candidate Starts for Gareth_97:

(Start: 15 @67290 has 236 MA's), (18, 67251), (23, 67224), (34, 67137), (Start: 41 @67098 has 2 MA's), (Start: 50 @67056 has 1 MA's), (64, 66930), (68, 66909), (72, 66897), (78, 66825), (88, 66711), (93, 66672), (95, 66654),

Gene: GeneCoco_96 Start: 67226, Stop: 66495, Start Num: 15

Candidate Starts for GeneCoco_96:

(Start: 15 @67226 has 236 MA's), (18, 67187), (23, 67160), (34, 67073), (Start: 41 @67034 has 2 MA's), (Start: 50 @66992 has 1 MA's), (64, 66866), (68, 66845), (72, 66833), (78, 66761), (88, 66647), (93, 66608), (95, 66590),

Gene: Gervas_97 Start: 66231, Stop: 65743, Start Num: 47

Candidate Starts for Gervas_97:

(Start: 47 @66231 has 43 MA's), (58, 66192), (59, 66189), (64, 66114), (66, 66105), (74, 66063), (83, 65955), (86, 65913), (93, 65850), (95, 65832),

Gene: Giraffe_98 Start: 67294, Stop: 66563, Start Num: 15

Candidate Starts for Giraffe_98:

(Start: 15 @67294 has 236 MA's), (18, 67255), (23, 67228), (34, 67141), (Start: 41 @67102 has 2 MA's), (Start: 50 @67060 has 1 MA's), (64, 66934), (68, 66913), (72, 66901), (78, 66829), (88, 66715), (93, 66676), (95, 66658),

Gene: Glass_86 Start: 63834, Stop: 63238, Start Num: 25

Candidate Starts for Glass_86:

(14, 63945), (Start: 25 @63834 has 17 MA's), (Start: 29 @63816 has 2 MA's), (Start: 36 @63768 has 11 MA's), (Start: 38 @63741 has 3 MA's), (44, 63705), (54, 63663), (56, 63654), (64, 63558), (72, 63522), (78, 63450), (86, 63354), (87, 63348), (91, 63306), (93, 63294),

Gene: GlenHope_97 Start: 65806, Stop: 65318, Start Num: 47

Candidate Starts for GlenHope_97:

(Start: 47 @65806 has 43 MA's), (58, 65767), (59, 65764), (64, 65689), (66, 65680), (74, 65638), (83, 65530), (86, 65488), (93, 65425), (95, 65407),

Gene: Godines_84 Start: 63740, Stop: 63144, Start Num: 25

Candidate Starts for Godines_84:

(14, 63851), (Start: 25 @63740 has 17 MA's), (Start: 29 @63722 has 2 MA's), (Start: 36 @63674 has 11 MA's), (Start: 38 @63647 has 3 MA's), (44, 63611), (54, 63569), (56, 63560), (64, 63464), (72, 63428), (78, 63356), (86, 63260), (87, 63254), (91, 63212), (93, 63200),

Gene: Gophee_96 Start: 67281, Stop: 66550, Start Num: 15

Candidate Starts for Gophee_96:

(Start: 15 @67281 has 236 MA's), (18, 67242), (23, 67215), (34, 67128), (Start: 41 @67089 has 2 MA's), (Start: 50 @67047 has 1 MA's), (64, 66921), (68, 66900), (72, 66888), (78, 66816), (88, 66702), (93, 66663), (95, 66645),

Gene: Grand2040_94 Start: 67016, Stop: 66285, Start Num: 15

Candidate Starts for Grand2040_94:

(Start: 15 @67016 has 236 MA's), (18, 66977), (23, 66950), (34, 66863), (Start: 41 @66824 has 2 MA's), (Start: 50 @66782 has 1 MA's), (64, 66656), (68, 66635), (72, 66623), (78, 66551), (88, 66437), (93, 66398), (95, 66380),

Gene: Gwilliam_97 Start: 67824, Stop: 67093, Start Num: 15

Candidate Starts for Gwilliam_97:

(10, 68043), (13, 67941), (Start: 15 @67824 has 236 MA's), (18, 67785), (23, 67758), (34, 67671), (Start: 41 @67632 has 2 MA's), (Start: 50 @67590 has 1 MA's), (64, 67464), (68, 67443), (72, 67431), (78, 67359), (88, 67245), (93, 67206), (95, 67188),

Gene: Haimas_94 Start: 66721, Stop: 65990, Start Num: 15

Candidate Starts for Haimas_94:

(Start: 15 @66721 has 236 MA's), (18, 66682), (23, 66655), (34, 66568), (Start: 41 @66529 has 2 MA's), (Start: 50 @66487 has 1 MA's), (64, 66361), (68, 66340), (72, 66328), (78, 66256), (88, 66142), (93, 66103), (95, 66085),

Gene: Haleema_96 Start: 66840, Stop: 66109, Start Num: 15

Candidate Starts for Haleema_96:

(Start: 15 @66840 has 236 MA's), (18, 66801), (23, 66774), (34, 66687), (Start: 41 @66648 has 2 MA's), (Start: 50 @66606 has 1 MA's), (64, 66480), (68, 66459), (72, 66447), (78, 66375), (88, 66261), (93, 66222), (95, 66204),

Gene: Halfpint_96 Start: 65551, Stop: 65063, Start Num: 47

Candidate Starts for Halfpint_96:

(Start: 47 @65551 has 43 MA's), (58, 65512), (59, 65509), (64, 65434), (66, 65425), (74, 65383), (83, 65275), (86, 65233), (93, 65170), (95, 65152),

Gene: Hamish_94 Start: 67009, Stop: 66278, Start Num: 15

Candidate Starts for Hamish_94:

(Start: 15 @67009 has 236 MA's), (18, 66970), (23, 66943), (34, 66856), (Start: 41 @66817 has 2 MA's), (Start: 50 @66775 has 1 MA's), (64, 66649), (68, 66628), (72, 66616), (78, 66544), (88, 66430), (93, 66391), (95, 66373),

Gene: Hartsy_93 Start: 66958, Stop: 66227, Start Num: 15

Candidate Starts for Hartsy_93:

(Start: 15 @66958 has 236 MA's), (18, 66919), (23, 66892), (34, 66805), (Start: 41 @66766 has 2 MA's), (Start: 50 @66724 has 1 MA's), (62, 66637), (64, 66598), (68, 66577), (72, 66565), (78, 66493), (88, 66379), (93, 66340), (95, 66322),

Gene: Harvey_94 Start: 66617, Stop: 65886, Start Num: 15

Candidate Starts for Harvey_94:

(Start: 15 @66617 has 236 MA's), (18, 66578), (23, 66551), (34, 66464), (Start: 41 @66425 has 2 MA's), (64, 66257), (68, 66236), (72, 66224), (78, 66152), (88, 66038), (93, 65999), (95, 65981),

Gene: HarveySr_93 Start: 64875, Stop: 64387, Start Num: 47

Candidate Starts for HarveySr_93:

(Start: 47 @64875 has 43 MA's), (58, 64836), (59, 64833), (64, 64758), (66, 64749), (74, 64707), (83, 64599), (86, 64557), (93, 64494), (95, 64476),

Gene: Hashim76_103 Start: 69243, Stop: 68725, Start Num: 41

Candidate Starts for Hashim76_103:

(4, 70089), (Start: 41 @69243 has 2 MA's), (43, 69222), (49, 69201), (55, 69174), (56, 69171), (72, 69042), (74, 69024), (78, 68967), (80, 68958), (93, 68808),

Gene: Heathcliff_96 Start: 65730, Stop: 65242, Start Num: 47

Candidate Starts for Heathcliff_96:

(Start: 47 @65730 has 43 MA's), (58, 65691), (59, 65688), (64, 65613), (66, 65604), (74, 65562), (83, 65454), (86, 65412), (93, 65349), (95, 65331),

Gene: Hedgerow_84 Start: 63791, Stop: 63195, Start Num: 25

Candidate Starts for Hedgerow_84:

(14, 63902), (Start: 25 @63791 has 17 MA's), (Start: 29 @63773 has 2 MA's), (Start: 36 @63725 has 11 MA's), (Start: 38 @63698 has 3 MA's), (42, 63671), (44, 63662), (54, 63620), (56, 63611), (64, 63515), (72, 63479), (78, 63407), (86, 63311), (87, 63305), (91, 63263), (93, 63251),

Gene: Held_95 Start: 66738, Stop: 66007, Start Num: 15

Candidate Starts for Held_95:

(Start: 15 @66738 has 236 MA's), (18, 66699), (23, 66672), (34, 66585), (Start: 41 @66546 has 2 MA's), (Start: 50 @66504 has 1 MA's), (64, 66378), (68, 66357), (72, 66345), (78, 66273), (88, 66159), (93, 66120), (95, 66102),

Gene: HenryJackson_97 Start: 67458, Stop: 66727, Start Num: 15

Candidate Starts for HenryJackson_97:

(Start: 15 @67458 has 236 MA's), (18, 67419), (23, 67392), (34, 67305), (Start: 41 @67266 has 2 MA's), (Start: 50 @67224 has 1 MA's), (64, 67098), (68, 67077), (72, 67065), (78, 66993), (88, 66879), (93, 66840), (95, 66822),

Gene: Hertubise_96 Start: 67100, Stop: 66369, Start Num: 15

Candidate Starts for Hertubise_96:

(Start: 15 @67100 has 236 MA's), (18, 67061), (23, 67034), (34, 66947), (Start: 41 @66908 has 2 MA's), (Start: 50 @66866 has 1 MA's), (64, 66740), (68, 66719), (72, 66707), (78, 66635), (88, 66521), (93, 66482), (95, 66464),

Gene: Hetaeria_96 Start: 66830, Stop: 66099, Start Num: 15

Candidate Starts for Hetaeria_96:

(Start: 15 @66830 has 236 MA's), (18, 66791), (23, 66764), (34, 66677), (Start: 41 @66638 has 2 MA's), (Start: 50 @66596 has 1 MA's), (64, 66470), (68, 66449), (72, 66437), (78, 66365), (88, 66251), (93, 66212), (95, 66194),

Gene: HighStump_99 Start: 67245, Stop: 66514, Start Num: 15

Candidate Starts for HighStump_99:

(Start: 15 @67245 has 236 MA's), (18, 67206), (23, 67179), (34, 67092), (Start: 41 @67053 has 2 MA's), (Start: 50 @67011 has 1 MA's), (64, 66885), (68, 66864), (72, 66852), (78, 66780), (88, 66666), (93, 66627), (95, 66609),

Gene: Hocus_96 Start: 66759, Stop: 66028, Start Num: 15

Candidate Starts for Hocus_96:

(Start: 15 @66759 has 236 MA's), (18, 66720), (23, 66693), (34, 66606), (Start: 41 @66567 has 2 MA's), (Start: 50 @66525 has 1 MA's), (64, 66399), (68, 66378), (72, 66366), (78, 66294), (88, 66180), (93, 66141), (95, 66123),

Gene: Holeinone_84 Start: 63681, Stop: 63085, Start Num: 25

Candidate Starts for Holeinone_84:

(14, 63792), (Start: 25 @63681 has 17 MA's), (Start: 29 @63663 has 2 MA's), (Start: 36 @63615 has 11 MA's), (Start: 38 @63588 has 3 MA's), (44, 63552), (54, 63510), (56, 63501), (64, 63405), (72, 63369), (78, 63297), (86, 63201), (87, 63195), (91, 63153), (93, 63141),

Gene: ImtiyazSitla_98 Start: 67284, Stop: 66532, Start Num: 15

Candidate Starts for ImtiyazSitla_98:

(10, 67503), (13, 67401), (Start: 15 @67284 has 236 MA's), (18, 67245), (34, 67131), (Start: 41 @67092 has 2 MA's), (64, 66924), (68, 66903), (72, 66891), (78, 66819), (88, 66705), (93, 66666), (95, 66648),

Gene: Imvubu_92 Start: 66340, Stop: 65831, Start Num: 40

Candidate Starts for Imvubu_92:

(26, 66430), (Start: 40 @66340 has 1 MA's), (53, 66280), (67, 66154), (73, 66127), (77, 66049), (88, 65932), (89, 65929), (91, 65905), (93, 65893), (95, 65875), (96, 65863),

Gene: Inchworm_98 Start: 67132, Stop: 66401, Start Num: 15

Candidate Starts for Inchworm_98:

(Start: 15 @67132 has 236 MA's), (18, 67093), (23, 67066), (34, 66979), (Start: 41 @66940 has 2 MA's), (Start: 50 @66898 has 1 MA's), (64, 66772), (68, 66751), (72, 66739), (78, 66667), (88, 66553), (93, 66514), (95, 66496),

Gene: Indlovu_88 Start: 67222, Stop: 66713, Start Num: 48

Candidate Starts for Indlovu_88:

(Start: 48 @67222 has 3 MA's), (64, 67096), (66, 67087), (68, 67075), (85, 66898), (86, 66895), (88, 66874), (93, 66838), (97, 66802), (102, 66775), (109, 66736),

Gene: Inverness_94 Start: 66689, Stop: 65958, Start Num: 15

Candidate Starts for Inverness_94:

(Start: 15 @66689 has 236 MA's), (18, 66650), (23, 66623), (34, 66536), (Start: 41 @66497 has 2 MA's), (Start: 50 @66455 has 1 MA's), (64, 66329), (68, 66308), (72, 66296), (78, 66224), (88, 66110), (93, 66071), (95, 66053),

Gene: Iridoclysis_96 Start: 67022, Stop: 66291, Start Num: 15

Candidate Starts for Iridoclysis_96:

(Start: 15 @67022 has 236 MA's), (18, 66983), (23, 66956), (34, 66869), (Start: 41 @66830 has 2 MA's), (Start: 50 @66788 has 1 MA's), (64, 66662), (68, 66641), (72, 66629), (78, 66557), (88, 66443), (93, 66404), (95, 66386),

Gene: IsaacEli_99 Start: 67263, Stop: 66532, Start Num: 15

Candidate Starts for IsaacEli_99:

(10, 67482), (13, 67380), (Start: 15 @67263 has 236 MA's), (18, 67224), (23, 67197), (34, 67110), (Start: 41 @67071 has 2 MA's), (Start: 50 @67029 has 1 MA's), (64, 66903), (68, 66882), (72, 66870), (78, 66798), (88, 66684), (93, 66645), (95, 66627),

Gene: ItsyBitsy1_81 Start: 63908, Stop: 63312, Start Num: 25

Candidate Starts for ItsyBitsy1_81:

(14, 64019), (Start: 25 @63908 has 17 MA's), (Start: 29 @63890 has 2 MA's), (Start: 36 @63842 has 11 MA's), (Start: 38 @63815 has 3 MA's), (44, 63779), (54, 63737), (56, 63728), (64, 63632), (72, 63596), (78, 63524), (86, 63428), (87, 63422), (91, 63380), (93, 63368),

Gene: JDog_96 Start: 67292, Stop: 66561, Start Num: 15

Candidate Starts for JDog_96:

(Start: 15 @67292 has 236 MA's), (18, 67253), (23, 67226), (34, 67139), (Start: 41 @67100 has 2 MA's), (Start: 50 @67058 has 1 MA's), (64, 66932), (68, 66911), (72, 66899), (78, 66827), (88, 66713), (93, 66674), (95, 66656),

Gene: JacAttac_97 Start: 66736, Stop: 66005, Start Num: 15

Candidate Starts for JacAttac_97:

(Start: 15 @66736 has 236 MA's), (18, 66697), (23, 66670), (34, 66583), (Start: 41 @66544 has 2 MA's), (Start: 50 @66502 has 1 MA's), (64, 66376), (68, 66355), (72, 66343), (78, 66271), (88, 66157), (93, 66118), (95, 66100),

Gene: Jackstina_89 Start: 65647, Stop: 65159, Start Num: 47

Candidate Starts for Jackstina_89:

(Start: 47 @65647 has 43 MA's), (58, 65608), (59, 65605), (64, 65530), (66, 65521), (74, 65479), (83, 65371), (86, 65329), (93, 65266), (95, 65248),

Gene: JakeO_98 Start: 67020, Stop: 66289, Start Num: 15

Candidate Starts for JakeO_98:

(Start: 15 @67020 has 236 MA's), (18, 66981), (23, 66954), (34, 66867), (Start: 41 @66828 has 2 MA's), (Start: 50 @66786 has 1 MA's), (64, 66660), (68, 66639), (72, 66627), (78, 66555), (88, 66441), (93, 66402), (95, 66384),

Gene: JangoPhett_95 Start: 67098, Stop: 66367, Start Num: 15

Candidate Starts for JangoPhett_95:

(Start: 15 @67098 has 236 MA's), (18, 67059), (23, 67032), (34, 66945), (Start: 41 @66906 has 2 MA's), (Start: 50 @66864 has 1 MA's), (64, 66738), (68, 66717), (72, 66705), (78, 66633), (88, 66519), (93, 66480), (95, 66462),

Gene: Jillium_97 Start: 67175, Stop: 66444, Start Num: 15

Candidate Starts for Jillium_97:

(Start: 15 @67175 has 236 MA's), (18, 67136), (23, 67109), (34, 67022), (Start: 41 @66983 has 2 MA's), (Start: 50 @66941 has 1 MA's), (64, 66815), (68, 66794), (72, 66782), (78, 66710), (88, 66596), (93, 66557), (95, 66539),

Gene: Jiminy_97 Start: 66956, Stop: 66225, Start Num: 15

Candidate Starts for Jiminy_97:

(Start: 15 @66956 has 236 MA's), (18, 66917), (23, 66890), (34, 66803), (Start: 41 @66764 has 2 MA's), (Start: 50 @66722 has 1 MA's), (64, 66596), (68, 66575), (72, 66563), (78, 66491), (88, 66377), (93, 66338), (95, 66320),

Gene: Jolie1_089 Start: 66284, Stop: 65610, Start Num: 37

Candidate Starts for Jolie1_089:

(17, 66428), (Start: 37 @66284 has 3 MA's), (51, 66203), (52, 66194), (64, 66074), (71, 66044), (78, 65972), (81, 65960), (92, 65819), (93, 65816), (95, 65798), (99, 65771), (104, 65747), (108, 65732),

Gene: KLucky39_94 Start: 66560, Stop: 65829, Start Num: 15

Candidate Starts for KLucky39_94:

(Start: 15 @66560 has 236 MA's), (18, 66521), (23, 66494), (34, 66407), (Start: 41 @66368 has 2 MA's), (Start: 50 @66326 has 1 MA's), (64, 66200), (68, 66179), (72, 66167), (78, 66095), (88, 65981), (93, 65942), (95, 65924),

Gene: Kahve_97 Start: 67456, Stop: 66725, Start Num: 15

Candidate Starts for Kahve_97:

(Start: 15 @67456 has 236 MA's), (18, 67417), (23, 67390), (34, 67303), (Start: 41 @67264 has 2 MA's), (Start: 50 @67222 has 1 MA's), (64, 67096), (68, 67075), (72, 67063), (78, 66991), (88, 66877), (93, 66838), (95, 66820),

Gene: Kailash_95 Start: 67155, Stop: 66424, Start Num: 15

Candidate Starts for Kailash_95:

(10, 67374), (13, 67272), (Start: 15 @67155 has 236 MA's), (18, 67116), (34, 67002), (Start: 41 @66963 has 2 MA's), (64, 66795), (68, 66774), (72, 66762), (78, 66690), (88, 66576), (93, 66537), (95, 66519),

Gene: Kaleb_84 Start: 63771, Stop: 63241, Start Num: 36

Candidate Starts for Kaleb_84:

(14, 63948), (Start: 25 @63837 has 17 MA's), (Start: 29 @63819 has 2 MA's), (Start: 36 @63771 has 11 MA's), (Start: 38 @63744 has 3 MA's), (44, 63708), (54, 63666), (56, 63657), (64, 63561), (72, 63525), (78, 63453), (86, 63357), (87, 63351), (91, 63309), (93, 63297),

Gene: Kamiyu_96 Start: 65734, Stop: 65246, Start Num: 47

Candidate Starts for Kamiyu_96:

(Start: 47 @65734 has 43 MA's), (58, 65695), (59, 65692), (64, 65617), (66, 65608), (74, 65566), (83, 65458), (86, 65416), (93, 65353), (95, 65335),

Gene: Katniss_99 Start: 66872, Stop: 66141, Start Num: 15

Candidate Starts for Katniss_99:

(Start: 15 @66872 has 236 MA's), (18, 66833), (23, 66806), (34, 66719), (Start: 41 @66680 has 2 MA's), (Start: 50 @66638 has 1 MA's), (64, 66512), (68, 66491), (72, 66479), (78, 66407), (88, 66293), (93, 66254), (95, 66236),

Gene: KayaCho_87 Start: 66154, Stop: 65498, Start Num: 37

Candidate Starts for KayaCho_87:

(Start: 37 @66154 has 3 MA's), (51, 66085), (63, 65983), (64, 65956), (70, 65926), (78, 65851), (81, 65839), (86, 65755), (92, 65698), (93, 65695), (95, 65677), (99, 65650), (104, 65623),

Gene: Keitherie_100 Start: 67514, Stop: 66783, Start Num: 15

Candidate Starts for Keitherie_100:

(Start: 15 @67514 has 236 MA's), (18, 67475), (23, 67448), (34, 67361), (Start: 41 @67322 has 2 MA's), (Start: 50 @67280 has 1 MA's), (64, 67154), (68, 67133), (72, 67121), (78, 67049), (88, 66935), (93, 66896), (95, 66878),

Gene: Kheth_84 Start: 63754, Stop: 63146, Start Num: 24

Candidate Starts for Kheth_84:

(1, 65020), (3, 64510), (5, 64258), (9, 64078), (12, 63949), (Start: 24 @63754 has 1 MA's), (Start: 36 @63676 has 11 MA's), (Start: 38 @63649 has 3 MA's), (42, 63622), (44, 63613), (54, 63571), (56, 63562), (64, 63466), (72, 63430), (78, 63358), (86, 63262), (87, 63256), (91, 63214), (93, 63202),

Gene: Kikipoo_99 Start: 67263, Stop: 66532, Start Num: 15

Candidate Starts for Kikipoo_99:

(10, 67482), (13, 67380), (Start: 15 @67263 has 236 MA's), (18, 67224), (23, 67197), (34, 67110), (Start: 41 @67071 has 2 MA's), (Start: 50 @67029 has 1 MA's), (64, 66903), (68, 66882), (72, 66870), (78, 66798), (88, 66684), (93, 66645), (95, 66627),

Gene: Kimbrough_98 Start: 67335, Stop: 66604, Start Num: 15

Candidate Starts for Kimbrough_98:

(Start: 15 @67335 has 236 MA's), (18, 67296), (23, 67269), (34, 67182), (Start: 41 @67143 has 2 MA's), (Start: 50 @67101 has 1 MA's), (64, 66975), (68, 66954), (72, 66942), (78, 66870), (88, 66756), (93, 66717), (95, 66699),

Gene: KingTut_87 Start: 63252, Stop: 62521, Start Num: 15

Candidate Starts for KingTut_87:

(Start: 15 @63252 has 236 MA's), (18, 63213), (23, 63186), (34, 63099), (Start: 41 @63060 has 2 MA's), (Start: 50 @63018 has 1 MA's), (64, 62892), (68, 62871), (72, 62859), (78, 62787), (88, 62673), (93, 62634), (95, 62616),

Gene: KingVeVeVe_95 Start: 66468, Stop: 65737, Start Num: 15

Candidate Starts for KingVeVeVe_95:

(10, 66687), (13, 66585), (Start: 15 @66468 has 236 MA's), (18, 66429), (23, 66402), (Start: 41 @66276 has 2 MA's), (Start: 50 @66234 has 1 MA's), (64, 66108), (68, 66087), (72, 66075), (88, 65889), (93, 65850), (95, 65832),

Gene: KlimbOn_96 Start: 66775, Stop: 66044, Start Num: 15

Candidate Starts for KlimbOn_96:

(Start: 15 @66775 has 236 MA's), (18, 66736), (23, 66709), (34, 66622), (Start: 41 @66583 has 2 MA's), (Start: 50 @66541 has 1 MA's), (64, 66415), (68, 66394), (72, 66382), (78, 66310), (88, 66196), (93, 66157), (95, 66139),

Gene: Kloppinator_97 Start: 66905, Stop: 66174, Start Num: 15

Candidate Starts for Kloppinator_97:

(Start: 15 @66905 has 236 MA's), (18, 66866), (23, 66839), (34, 66752), (Start: 41 @66713 has 2 MA's), (64, 66545), (68, 66524), (72, 66512), (78, 66440), (88, 66326), (93, 66287), (95, 66269),

Gene: Knocker_87 Start: 67165, Stop: 66737, Start Num: 46

Candidate Starts for Knocker_87:

(7, 67660), (Start: 46 @67165 has 2 MA's), (55, 67135), (64, 67036), (66, 67027), (84, 66841), (86, 66835), (93, 66778), (95, 66760),

Gene: Kronus_96 Start: 66819, Stop: 66331, Start Num: 47

Candidate Starts for Kronus_96:

(Start: 47 @66819 has 43 MA's), (58, 66780), (59, 66777), (64, 66702), (66, 66693), (74, 66651), (83, 66543), (86, 66501), (93, 66438), (95, 66420),

Gene: Kwadwo_96 Start: 66759, Stop: 66028, Start Num: 15

Candidate Starts for Kwadwo_96:

(Start: 15 @66759 has 236 MA's), (18, 66720), (23, 66693), (34, 66606), (Start: 41 @66567 has 2 MA's), (Start: 50 @66525 has 1 MA's), (64, 66399), (68, 66378), (72, 66366), (78, 66294), (88, 66180), (93, 66141), (95, 66123),

Gene: Kwksand96_98 Start: 67025, Stop: 66294, Start Num: 15

Candidate Starts for Kwksand96_98:

(Start: 15 @67025 has 236 MA's), (18, 66986), (23, 66959), (Start: 41 @66833 has 2 MA's), (Start: 50 @66791 has 1 MA's), (64, 66665), (68, 66644), (72, 66632), (78, 66560), (88, 66446), (93, 66407), (95, 66389),

Gene: Labeouficaum_97 Start: 66839, Stop: 66108, Start Num: 15

Candidate Starts for Labeouficaum_97:

(10, 67058), (13, 66956), (Start: 15 @66839 has 236 MA's), (18, 66800), (34, 66686), (Start: 41 @66647 has 2 MA's), (64, 66479), (68, 66458), (72, 66446), (78, 66374), (88, 66260), (93, 66221), (95, 66203),

Gene: Lars_85 Start: 63740, Stop: 63210, Start Num: 36

Candidate Starts for Lars_85:

(3, 64574), (5, 64322), (9, 64142), (12, 64013), (Start: 24 @63818 has 1 MA's), (Start: 36 @63740 has 11 MA's), (Start: 38 @63713 has 3 MA's), (42, 63686), (44, 63677), (54, 63635), (56, 63626), (64, 63530), (72, 63494), (78, 63422), (86, 63326), (87, 63320), (91, 63278), (93, 63266),

Gene: LasagnaCat_96 Start: 67141, Stop: 66410, Start Num: 15

Candidate Starts for LasagnaCat_96:

(Start: 15 @67141 has 236 MA's), (18, 67102), (23, 67075), (34, 66988), (Start: 41 @66949 has 2 MA's), (Start: 50 @66907 has 1 MA's), (64, 66781), (68, 66760), (72, 66748), (78, 66676), (88, 66562), (93, 66523), (95, 66505),

Gene: Lasso_96 Start: 67001, Stop: 66270, Start Num: 15

Candidate Starts for Lasso_96:

(Start: 15 @67001 has 236 MA's), (18, 66962), (23, 66935), (34, 66848), (Start: 41 @66809 has 2 MA's), (Start: 50 @66767 has 1 MA's), (64, 66641), (68, 66620), (72, 66608), (78, 66536), (88, 66422), (93, 66383), (95, 66365),

Gene: Laurie_83 Start: 63078, Stop: 62548, Start Num: 36

Candidate Starts for Laurie_83:

(3, 63918), (5, 63666), (9, 63486), (12, 63357), (Start: 24 @63162 has 1 MA's), (Start: 36 @63078 has 11 MA's), (Start: 38 @63051 has 3 MA's), (42, 63024), (44, 63015), (54, 62973), (56, 62964), (64,

62868), (72, 62832), (78, 62760), (86, 62664), (87, 62658), (91, 62616), (93, 62604),

Gene: LeeLot_95 Start: 67346, Stop: 66615, Start Num: 15

Candidate Starts for LeeLot_95:

(Start: 15 @67346 has 236 MA's), (18, 67307), (23, 67280), (34, 67193), (Start: 41 @67154 has 2 MA's), (Start: 50 @67112 has 1 MA's), (64, 66986), (68, 66965), (72, 66953), (78, 66881), (88, 66767), (93, 66728), (95, 66710),

Gene: Lego3393_95 Start: 67462, Stop: 66731, Start Num: 15

Candidate Starts for Lego3393_95:

(Start: 15 @67462 has 236 MA's), (18, 67423), (23, 67396), (34, 67309), (Start: 41 @67270 has 2 MA's), (Start: 50 @67228 has 1 MA's), (64, 67102), (68, 67081), (72, 67069), (78, 66997), (88, 66883), (93, 66844), (95, 66826),

Gene: Legolas_98 Start: 67089, Stop: 66358, Start Num: 15

Candidate Starts for Legolas_98:

(Start: 15 @67089 has 236 MA's), (18, 67050), (23, 67023), (34, 66936), (Start: 41 @66897 has 2 MA's), (Start: 50 @66855 has 1 MA's), (64, 66729), (68, 66708), (72, 66696), (78, 66624), (88, 66510), (93, 66471), (95, 66453),

Gene: LeiMonet_99 Start: 67222, Stop: 66491, Start Num: 15

Candidate Starts for LeiMonet_99:

(Start: 15 @67222 has 236 MA's), (18, 67183), (23, 67156), (34, 67069), (Start: 41 @67030 has 2 MA's), (Start: 50 @66988 has 1 MA's), (64, 66862), (68, 66841), (72, 66829), (78, 66757), (88, 66643), (93, 66604), (95, 66586),

Gene: LemonSlice_97 Start: 66748, Stop: 66017, Start Num: 15

Candidate Starts for LemonSlice_97:

(Start: 15 @66748 has 236 MA's), (18, 66709), (23, 66682), (34, 66595), (Start: 41 @66556 has 2 MA's), (Start: 50 @66514 has 1 MA's), (64, 66388), (68, 66367), (72, 66355), (78, 66283), (88, 66169), (93, 66130), (95, 66112),

Gene: Lephleur_84 Start: 63596, Stop: 63066, Start Num: 36

Candidate Starts for Lephleur_84:

(14, 63773), (Start: 25 @63662 has 17 MA's), (Start: 29 @63644 has 2 MA's), (Start: 36 @63596 has 11 MA's), (Start: 38 @63569 has 3 MA's), (44, 63533), (54, 63491), (56, 63482), (64, 63386), (72, 63350), (78, 63278), (86, 63182), (87, 63176), (91, 63134), (93, 63122),

Gene: LestyG_94 Start: 65305, Stop: 64817, Start Num: 47

Candidate Starts for LestyG_94:

(Start: 47 @65305 has 43 MA's), (58, 65266), (59, 65263), (64, 65188), (66, 65179), (74, 65137), (83, 65029), (86, 64987), (93, 64924), (95, 64906),

Gene: LizLemon_84 Start: 63833, Stop: 63237, Start Num: 25

Candidate Starts for LizLemon_84:

(14, 63944), (Start: 25 @63833 has 17 MA's), (Start: 29 @63815 has 2 MA's), (Start: 36 @63767 has 11 MA's), (Start: 38 @63740 has 3 MA's), (42, 63713), (44, 63704), (54, 63662), (56, 63653), (64, 63557), (72, 63521), (78, 63449), (86, 63353), (87, 63347), (91, 63305), (93, 63293),

Gene: Longacauda_97 Start: 66983, Stop: 66231, Start Num: 15

Candidate Starts for Longacauda_97:

(Start: 15 @66983 has 236 MA's), (18, 66944), (23, 66917), (34, 66830), (Start: 41 @66791 has 2 MA's), (Start: 50 @66749 has 1 MA's), (64, 66623), (68, 66602), (72, 66590), (78, 66518), (88, 66404),

(93, 66365), (95, 66347),

Gene: Lopsy_93 Start: 66654, Stop: 65923, Start Num: 15

Candidate Starts for Lopsy_93:

(Start: 15 @66654 has 236 MA's), (18, 66615), (23, 66588), (34, 66501), (Start: 41 @66462 has 2 MA's), (Start: 50 @66420 has 1 MA's), (64, 66294), (68, 66273), (72, 66261), (88, 66075), (93, 66036), (95, 66018),

Gene: LostAndPhound_96 Start: 67290, Stop: 66559, Start Num: 15

Candidate Starts for LostAndPhound_96:

(Start: 15 @67290 has 236 MA's), (18, 67251), (23, 67224), (34, 67137), (Start: 41 @67098 has 2 MA's), (Start: 50 @67056 has 1 MA's), (64, 66930), (68, 66909), (72, 66897), (78, 66825), (88, 66711), (93, 66672), (95, 66654),

Gene: LuckyMarjie_94 Start: 66500, Stop: 65769, Start Num: 15

Candidate Starts for LuckyMarjie_94:

(Start: 15 @66500 has 236 MA's), (18, 66461), (23, 66434), (34, 66347), (Start: 41 @66308 has 2 MA's), (Start: 50 @66266 has 1 MA's), (64, 66140), (68, 66119), (72, 66107), (78, 66035), (88, 65921), (93, 65882), (95, 65864),

Gene: Lulumae_92 Start: 66481, Stop: 65750, Start Num: 15

Candidate Starts for Lulumae_92:

(Start: 15 @66481 has 236 MA's), (18, 66442), (23, 66415), (Start: 41 @66289 has 2 MA's), (Start: 50 @66247 has 1 MA's), (64, 66121), (68, 66100), (72, 66088), (78, 66016), (88, 65902), (93, 65863), (95, 65845),

Gene: Lulwa_94 Start: 66114, Stop: 65383, Start Num: 15

Candidate Starts for Lulwa_94:

(Start: 15 @66114 has 236 MA's), (18, 66075), (23, 66048), (34, 65961), (Start: 41 @65922 has 2 MA's), (Start: 50 @65880 has 1 MA's), (64, 65754), (68, 65733), (72, 65721), (78, 65649), (88, 65535), (93, 65496), (95, 65478),

Gene: Lumine_98 Start: 66938, Stop: 66207, Start Num: 15

Candidate Starts for Lumine_98:

(Start: 15 @66938 has 236 MA's), (18, 66899), (23, 66872), (34, 66785), (Start: 41 @66746 has 2 MA's), (Start: 50 @66704 has 1 MA's), (64, 66578), (68, 66557), (72, 66545), (78, 66473), (88, 66359), (93, 66320), (95, 66302),

Gene: MRabcd_97 Start: 67216, Stop: 66485, Start Num: 15

Candidate Starts for MRabcd_97:

(Start: 15 @67216 has 236 MA's), (18, 67177), (23, 67150), (34, 67063), (Start: 41 @67024 has 2 MA's), (Start: 50 @66982 has 1 MA's), (64, 66856), (68, 66835), (72, 66823), (78, 66751), (88, 66637), (93, 66598), (95, 66580),

Gene: Mag7_95 Start: 66699, Stop: 65968, Start Num: 15

Candidate Starts for Mag7_95:

(10, 66918), (13, 66816), (Start: 15 @66699 has 236 MA's), (18, 66660), (34, 66546), (Start: 41 @66507 has 2 MA's), (64, 66339), (68, 66318), (72, 66306), (78, 66234), (88, 66120), (93, 66081), (95, 66063),

Gene: Magic8_96 Start: 67067, Stop: 66336, Start Num: 15

Candidate Starts for Magic8_96:

(10, 67286), (13, 67184), (Start: 15 @67067 has 236 MA's), (18, 67028), (34, 66914), (Start: 41 @66875 has 2 MA's), (64, 66707), (68, 66686), (72, 66674), (78, 66602), (88, 66488), (93, 66449), (95, 66431),

Gene: Mana_94 Start: 66904, Stop: 66173, Start Num: 15

Candidate Starts for Mana_94:

(Start: 15 @66904 has 236 MA's), (18, 66865), (23, 66838), (34, 66751), (Start: 41 @66712 has 2 MA's), (Start: 50 @66670 has 1 MA's), (64, 66544), (68, 66523), (72, 66511), (78, 66439), (88, 66325), (93, 66286), (95, 66268),

Gene: Manad_96 Start: 67013, Stop: 66282, Start Num: 15

Candidate Starts for Manad_96:

(Start: 15 @67013 has 236 MA's), (18, 66974), (23, 66947), (34, 66860), (Start: 41 @66821 has 2 MA's), (Start: 50 @66779 has 1 MA's), (64, 66653), (68, 66632), (72, 66620), (78, 66548), (88, 66434), (93, 66395), (95, 66377),

Gene: Marley1013_94 Start: 66265, Stop: 65777, Start Num: 47

Candidate Starts for Marley1013_94:

(Start: 47 @66265 has 43 MA's), (58, 66226), (59, 66223), (64, 66148), (66, 66139), (74, 66097), (83, 65989), (86, 65947), (93, 65884), (95, 65866),

Gene: Maru_96 Start: 67109, Stop: 66378, Start Num: 15

Candidate Starts for Maru_96:

(Start: 15 @67109 has 236 MA's), (18, 67070), (23, 67043), (34, 66956), (Start: 41 @66917 has 2 MA's), (Start: 50 @66875 has 1 MA's), (64, 66749), (68, 66728), (72, 66716), (78, 66644), (88, 66530), (93, 66491), (95, 66473),

Gene: Maskar_98 Start: 67284, Stop: 66532, Start Num: 15

Candidate Starts for Maskar_98:

(10, 67503), (13, 67401), (Start: 15 @67284 has 236 MA's), (18, 67245), (34, 67131), (Start: 41 @67092 has 2 MA's), (64, 66924), (68, 66903), (72, 66891), (78, 66819), (88, 66705), (93, 66666), (95, 66648),

Gene: MasterPo_85 Start: 63636, Stop: 63106, Start Num: 36

Candidate Starts for MasterPo_85:

(14, 63813), (Start: 25 @63702 has 17 MA's), (Start: 29 @63684 has 2 MA's), (Start: 36 @63636 has 11 MA's), (Start: 38 @63609 has 3 MA's), (42, 63582), (44, 63573), (54, 63531), (56, 63522), (57, 63516), (64, 63426), (72, 63390), (78, 63318), (86, 63222), (87, 63216), (91, 63174), (93, 63162),

Gene: Matalotodo_97 Start: 67748, Stop: 67017, Start Num: 15

Candidate Starts for Matalotodo_97:

(Start: 15 @67748 has 236 MA's), (18, 67709), (23, 67682), (34, 67595), (Start: 41 @67556 has 2 MA's), (Start: 50 @67514 has 1 MA's), (64, 67388), (68, 67367), (72, 67355), (78, 67283), (88, 67169), (93, 67130), (95, 67112),

Gene: Mcshane_99 Start: 67131, Stop: 66400, Start Num: 15

Candidate Starts for Mcshane_99:

(Start: 15 @67131 has 236 MA's), (18, 67092), (23, 67065), (34, 66978), (Start: 41 @66939 has 2 MA's), (Start: 50 @66897 has 1 MA's), (64, 66771), (68, 66750), (72, 66738), (78, 66666), (88, 66552), (93, 66513), (95, 66495),

Gene: Mecca_97 Start: 67315, Stop: 66584, Start Num: 15

Candidate Starts for Mecca_97:

(Start: 15 @67315 has 236 MA's), (18, 67276), (23, 67249), (34, 67162), (Start: 41 @67123 has 2 MA's), (Start: 50 @67081 has 1 MA's), (64, 66955), (68, 66934), (72, 66922), (78, 66850), (88, 66736), (93, 66697), (95, 66679),

Gene: Megamind20_99 Start: 67095, Stop: 66364, Start Num: 15

Candidate Starts for Megamind20_99:

(Start: 15 @67095 has 236 MA's), (18, 67056), (23, 67029), (Start: 41 @66903 has 2 MA's), (Start: 50 @66861 has 1 MA's), (64, 66735), (68, 66714), (72, 66702), (78, 66630), (88, 66516), (93, 66477), (95, 66459),

Gene: Megatron_98 Start: 67434, Stop: 66703, Start Num: 15

Candidate Starts for Megatron_98:

(Start: 15 @67434 has 236 MA's), (18, 67395), (23, 67368), (34, 67281), (Start: 41 @67242 has 2 MA's), (Start: 50 @67200 has 1 MA's), (64, 67074), (68, 67053), (72, 67041), (78, 66969), (88, 66855), (93, 66816), (95, 66798),

Gene: Melc17_94 Start: 67384, Stop: 66653, Start Num: 15

Candidate Starts for Melc17_94:

(Start: 15 @67384 has 236 MA's), (18, 67345), (23, 67318), (34, 67231), (Start: 41 @67192 has 2 MA's), (Start: 50 @67150 has 1 MA's), (64, 67024), (68, 67003), (72, 66991), (78, 66919), (88, 66805), (93, 66766), (95, 66748),

Gene: MelsMeow_95 Start: 66765, Stop: 66013, Start Num: 15

Candidate Starts for MelsMeow_95:

(10, 66984), (13, 66882), (Start: 15 @66765 has 236 MA's), (18, 66726), (34, 66612), (Start: 41 @66573 has 2 MA's), (64, 66405), (68, 66384), (72, 66372), (78, 66300), (88, 66186), (93, 66147), (95, 66129),

Gene: Mesh1_97 Start: 67199, Stop: 66468, Start Num: 15

Candidate Starts for Mesh1_97:

(Start: 15 @67199 has 236 MA's), (18, 67160), (23, 67133), (34, 67046), (Start: 41 @67007 has 2 MA's), (Start: 50 @66965 has 1 MA's), (64, 66839), (68, 66818), (72, 66806), (78, 66734), (88, 66620), (93, 66581), (95, 66563),

Gene: MichaelPhcott_95 Start: 66696, Stop: 65965, Start Num: 15

Candidate Starts for MichaelPhcott_95:

(10, 66915), (13, 66813), (Start: 15 @66696 has 236 MA's), (18, 66657), (34, 66543), (Start: 41 @66504 has 2 MA's), (64, 66336), (68, 66315), (72, 66303), (78, 66231), (88, 66117), (93, 66078), (95, 66060),

Gene: Mikota_91 Start: 66191, Stop: 65460, Start Num: 15

Candidate Starts for Mikota_91:

(Start: 15 @66191 has 236 MA's), (18, 66152), (23, 66125), (34, 66038), (Start: 41 @65999 has 2 MA's), (64, 65831), (68, 65810), (72, 65798), (78, 65726), (88, 65612), (93, 65573), (95, 65555),

Gene: MiniBoss_92 Start: 65812, Stop: 65081, Start Num: 15

Candidate Starts for MiniBoss_92:

(10, 66031), (13, 65929), (Start: 15 @65812 has 236 MA's), (18, 65773), (23, 65746), (28, 65710), (34, 65659), (Start: 41 @65620 has 2 MA's), (Start: 50 @65578 has 1 MA's), (64, 65452), (68, 65431), (72, 65419), (88, 65233), (93, 65194), (95, 65176),

Gene: MitKao_97 Start: 66917, Stop: 66186, Start Num: 15

Candidate Starts for MitKao_97:

(Start: 15 @66917 has 236 MA's), (18, 66878), (23, 66851), (34, 66764), (Start: 41 @66725 has 2 MA's), (Start: 50 @66683 has 1 MA's), (64, 66557), (68, 66536), (72, 66524), (78, 66452), (88, 66338), (93, 66299), (95, 66281),

Gene: MmasiCarm_97 Start: 66162, Stop: 65674, Start Num: 47

Candidate Starts for MmasiCarm_97:

(Start: 47 @66162 has 43 MA's), (58, 66123), (59, 66120), (64, 66045), (66, 66036), (74, 65994), (83, 65886), (86, 65844), (93, 65781), (95, 65763),

Gene: Morgushi_94 Start: 66732, Stop: 66001, Start Num: 15

Candidate Starts for Morgushi_94:

(Start: 15 @66732 has 236 MA's), (18, 66693), (23, 66666), (34, 66579), (Start: 41 @66540 has 2 MA's), (Start: 50 @66498 has 1 MA's), (64, 66372), (68, 66351), (72, 66339), (78, 66267), (88, 66153), (93, 66114), (95, 66096),

Gene: Mortcellus_96 Start: 66900, Stop: 66412, Start Num: 47

Candidate Starts for Mortcellus_96:

(Start: 47 @66900 has 43 MA's), (58, 66861), (59, 66858), (64, 66783), (66, 66774), (74, 66732), (83, 66624), (86, 66582), (93, 66519), (95, 66501),

Gene: Morty_97 Start: 67302, Stop: 66571, Start Num: 15

Candidate Starts for Morty_97:

(Start: 15 @67302 has 236 MA's), (18, 67263), (23, 67236), (34, 67149), (Start: 41 @67110 has 2 MA's), (Start: 50 @67068 has 1 MA's), (64, 66942), (68, 66921), (72, 66909), (78, 66837), (88, 66723), (93, 66684), (95, 66666),

Gene: Morty007_94 Start: 66532, Stop: 66044, Start Num: 47

Candidate Starts for Morty007_94:

(Start: 47 @66532 has 43 MA's), (58, 66493), (59, 66490), (64, 66415), (66, 66406), (74, 66364), (83, 66256), (86, 66214), (93, 66151), (95, 66133),

Gene: Mosaic_94 Start: 66913, Stop: 66182, Start Num: 15

Candidate Starts for Mosaic_94:

(Start: 15 @66913 has 236 MA's), (18, 66874), (23, 66847), (34, 66760), (Start: 41 @66721 has 2 MA's), (Start: 50 @66679 has 1 MA's), (64, 66553), (68, 66532), (72, 66520), (78, 66448), (88, 66334), (93, 66295), (95, 66277),

Gene: MrPhizzler_96 Start: 67212, Stop: 66481, Start Num: 15

Candidate Starts for MrPhizzler_96:

(Start: 15 @67212 has 236 MA's), (18, 67173), (23, 67146), (Start: 41 @67020 has 2 MA's), (Start: 50 @66978 has 1 MA's), (64, 66852), (68, 66831), (72, 66819), (78, 66747), (88, 66633), (93, 66594), (95, 66576),

Gene: Mulan_96 Start: 66946, Stop: 66215, Start Num: 15

Candidate Starts for Mulan_96:

(Start: 15 @66946 has 236 MA's), (18, 66907), (23, 66880), (34, 66793), (Start: 41 @66754 has 2 MA's), (Start: 50 @66712 has 1 MA's), (64, 66586), (68, 66565), (72, 66553), (78, 66481), (88, 66367), (93, 66328), (95, 66310),

Gene: Murdoc_93 Start: 67025, Stop: 66294, Start Num: 15

Candidate Starts for Murdoc_93:

(Start: 15 @67025 has 236 MA's), (18, 66986), (23, 66959), (34, 66872), (Start: 41 @66833 has 2 MA's), (Start: 50 @66791 has 1 MA's), (64, 66665), (68, 66644), (72, 66632), (78, 66560), (88, 66446),

(93, 66407), (95, 66389),

Gene: Mutante_98 Start: 66919, Stop: 66188, Start Num: 15

Candidate Starts for Mutante_98:

(Start: 15 @66919 has 236 MA's), (18, 66880), (23, 66853), (34, 66766), (Start: 41 @66727 has 2 MA's), (Start: 50 @66685 has 1 MA's), (64, 66559), (68, 66538), (72, 66526), (78, 66454), (88, 66340), (93, 66301), (95, 66283),

Gene: Mysterious_90 Start: 65876, Stop: 65298, Start Num: 38

Candidate Starts for Mysterious_90:

(7, 66308), (Start: 38 @65876 has 3 MA's), (60, 65771), (64, 65714), (66, 65705), (78, 65609), (81, 65597), (90, 65480), (91, 65468), (93, 65456), (95, 65438), (103, 65399),

Gene: Nacho_0099 Start: 67746, Stop: 67015, Start Num: 15

Candidate Starts for Nacho_0099:

(Start: 15 @67746 has 236 MA's), (18, 67707), (23, 67680), (34, 67593), (Start: 41 @67554 has 2 MA's), (Start: 50 @67512 has 1 MA's), (64, 67386), (68, 67365), (72, 67353), (78, 67281), (88, 67167), (93, 67128), (95, 67110),

Gene: Nangang_90 Start: 66354, Stop: 65737, Start Num: 38

Candidate Starts for Nangang_90:

(7, 66789), (20, 66459), (Start: 38 @66354 has 3 MA's), (64, 66186), (66, 66177), (81, 66069), (90, 65952), (93, 65928), (95, 65910), (110, 65817),

Gene: Neos5_95 Start: 65988, Stop: 65500, Start Num: 47

Candidate Starts for Neos5_95:

(Start: 47 @65988 has 43 MA's), (58, 65949), (59, 65946), (64, 65871), (66, 65862), (74, 65820), (83, 65712), (86, 65670), (93, 65607), (95, 65589),

Gene: Newman_92 Start: 67023, Stop: 66292, Start Num: 15

Candidate Starts for Newman_92:

(Start: 15 @67023 has 236 MA's), (18, 66984), (23, 66957), (34, 66870), (Start: 41 @66831 has 2 MA's), (Start: 50 @66789 has 1 MA's), (64, 66663), (68, 66642), (72, 66630), (78, 66558), (88, 66444), (93, 66405), (95, 66387),

Gene: Nicole21_98 Start: 67053, Stop: 66322, Start Num: 15

Candidate Starts for Nicole21_98:

(Start: 15 @67053 has 236 MA's), (18, 67014), (23, 66987), (34, 66900), (Start: 41 @66861 has 2 MA's), (Start: 50 @66819 has 1 MA's), (64, 66693), (68, 66672), (72, 66660), (78, 66588), (88, 66474), (93, 66435), (95, 66417),

Gene: Nozo_96 Start: 66541, Stop: 66053, Start Num: 47

Candidate Starts for Nozo_96:

(Start: 47 @66541 has 43 MA's), (58, 66502), (59, 66499), (64, 66424), (66, 66415), (74, 66373), (83, 66265), (86, 66223), (93, 66160), (95, 66142),

Gene: Numberten_97 Start: 67032, Stop: 66301, Start Num: 15

Candidate Starts for Numberten_97:

(Start: 15 @67032 has 236 MA's), (18, 66993), (23, 66966), (34, 66879), (Start: 41 @66840 has 2 MA's), (Start: 50 @66798 has 1 MA's), (64, 66672), (68, 66651), (72, 66639), (78, 66567), (88, 66453), (93, 66414), (95, 66396),

Gene: Nyala_97 Start: 66768, Stop: 66037, Start Num: 15

Candidate Starts for Nyala_97:

(Start: 15 @66768 has 236 MA's), (18, 66729), (23, 66702), (34, 66615), (Start: 41 @66576 has 2 MA's), (Start: 50 @66534 has 1 MA's), (64, 66408), (68, 66387), (72, 66375), (78, 66303), (88, 66189), (93, 66150), (95, 66132),

Gene: OSmaximus_97 Start: 67321, Stop: 66590, Start Num: 15

Candidate Starts for OSmaximus_97:

(10, 67540), (13, 67438), (Start: 15 @67321 has 236 MA's), (18, 67282), (23, 67255), (28, 67219), (34, 67168), (Start: 41 @67129 has 2 MA's), (64, 66961), (68, 66940), (72, 66928), (78, 66856), (88, 66742), (93, 66703), (95, 66685),

Gene: Obutu_98 Start: 66345, Stop: 65857, Start Num: 47

Candidate Starts for Obutu_98:

(Start: 47 @66345 has 43 MA's), (58, 66306), (59, 66303), (64, 66228), (66, 66219), (74, 66177), (83, 66069), (86, 66027), (93, 65964), (95, 65946),

Gene: Olak_99 Start: 67301, Stop: 66570, Start Num: 15

Candidate Starts for Olak_99:

(Start: 15 @67301 has 236 MA's), (18, 67262), (23, 67235), (34, 67148), (Start: 41 @67109 has 2 MA's), (Start: 50 @67067 has 1 MA's), (64, 66941), (68, 66920), (72, 66908), (78, 66836), (88, 66722), (93, 66683), (95, 66665),

Gene: Oline_96 Start: 66923, Stop: 66192, Start Num: 15

Candidate Starts for Oline_96:

(Start: 15 @66923 has 236 MA's), (18, 66884), (23, 66857), (34, 66770), (Start: 41 @66731 has 2 MA's), (Start: 50 @66689 has 1 MA's), (64, 66563), (68, 66542), (72, 66530), (78, 66458), (88, 66344), (93, 66305), (95, 66287),

Gene: Olive_93 Start: 67165, Stop: 66434, Start Num: 15

Candidate Starts for Olive_93:

(Start: 15 @67165 has 236 MA's), (18, 67126), (23, 67099), (34, 67012), (Start: 41 @66973 has 2 MA's), (Start: 50 @66931 has 1 MA's), (64, 66805), (68, 66784), (72, 66772), (78, 66700), (88, 66586), (93, 66547), (95, 66529),

Gene: OliverWalter_96 Start: 67217, Stop: 66486, Start Num: 15

Candidate Starts for OliverWalter_96:

(Start: 15 @67217 has 236 MA's), (18, 67178), (23, 67151), (34, 67064), (Start: 41 @67025 has 2 MA's), (Start: 50 @66983 has 1 MA's), (64, 66857), (68, 66836), (72, 66824), (78, 66752), (88, 66638), (93, 66599), (95, 66581),

Gene: Omniscient_98 Start: 67622, Stop: 66891, Start Num: 15

Candidate Starts for Omniscient_98:

(Start: 15 @67622 has 236 MA's), (18, 67583), (23, 67556), (34, 67469), (Start: 41 @67430 has 2 MA's), (Start: 50 @67388 has 1 MA's), (64, 67262), (68, 67241), (72, 67229), (78, 67157), (88, 67043), (93, 67004), (95, 66986),

Gene: Oosterbaan_97 Start: 67160, Stop: 66429, Start Num: 15

Candidate Starts for Oosterbaan_97:

(Start: 15 @67160 has 236 MA's), (18, 67121), (23, 67094), (34, 67007), (Start: 41 @66968 has 2 MA's), (Start: 50 @66926 has 1 MA's), (64, 66800), (68, 66779), (72, 66767), (78, 66695), (88, 66581), (93, 66542), (95, 66524),

Gene: Opia_85 Start: 63726, Stop: 63130, Start Num: 25

Candidate Starts for Opia_85:

(14, 63837), (Start: 25 @63726 has 17 MA's), (Start: 29 @63708 has 2 MA's), (Start: 36 @63660 has 11 MA's), (Start: 38 @63633 has 3 MA's), (42, 63606), (44, 63597), (54, 63555), (56, 63546), (64, 63450), (72, 63414), (78, 63342), (86, 63246), (87, 63240), (91, 63198), (93, 63186),

Gene: OrangeOswald_95 Start: 65776, Stop: 65288, Start Num: 47

Candidate Starts for OrangeOswald_95:

(Start: 47 @65776 has 43 MA's), (58, 65737), (59, 65734), (64, 65659), (66, 65650), (74, 65608), (83, 65500), (86, 65458), (93, 65395), (95, 65377),

Gene: Orfeu_97 Start: 67281, Stop: 66550, Start Num: 15

Candidate Starts for Orfeu_97:

(Start: 15 @67281 has 236 MA's), (18, 67242), (23, 67215), (34, 67128), (Start: 41 @67089 has 2 MA's), (Start: 50 @67047 has 1 MA's), (64, 66921), (68, 66900), (72, 66888), (78, 66816), (88, 66702), (93, 66663), (95, 66645),

Gene: Orion_95 Start: 66852, Stop: 66121, Start Num: 15

Candidate Starts for Orion_95:

(Start: 15 @66852 has 236 MA's), (18, 66813), (23, 66786), (34, 66699), (Start: 41 @66660 has 2 MA's), (Start: 50 @66618 has 1 MA's), (64, 66492), (68, 66471), (72, 66459), (78, 66387), (88, 66273), (93, 66234), (95, 66216),

Gene: Orwigg_99 Start: 67057, Stop: 66326, Start Num: 15

Candidate Starts for Orwigg_99:

(Start: 15 @67057 has 236 MA's), (18, 67018), (23, 66991), (34, 66904), (Start: 41 @66865 has 2 MA's), (Start: 50 @66823 has 1 MA's), (64, 66697), (68, 66676), (72, 66664), (78, 66592), (88, 66478), (93, 66439), (95, 66421),

Gene: PG1_95 Start: 67424, Stop: 66693, Start Num: 15

Candidate Starts for PG1_95:

(Start: 15 @67424 has 236 MA's), (18, 67385), (23, 67358), (34, 67271), (Start: 41 @67232 has 2 MA's), (Start: 50 @67190 has 1 MA's), (64, 67064), (68, 67043), (72, 67031), (78, 66959), (88, 66845), (93, 66806), (95, 66788),

Gene: Pacifista_100 Start: 67142, Stop: 66411, Start Num: 15

Candidate Starts for Pacifista_100:

(Start: 15 @67142 has 236 MA's), (18, 67103), (23, 67076), (34, 66989), (Start: 41 @66950 has 2 MA's), (Start: 50 @66908 has 1 MA's), (64, 66782), (68, 66761), (72, 66749), (78, 66677), (88, 66563), (93, 66524), (95, 66506),

Gene: PenguinLover67_87 Start: 65234, Stop: 64770, Start Num: 48

Candidate Starts for PenguinLover67_87:

(Start: 48 @65234 has 3 MA's), (51, 65225), (71, 65075), (72, 65072), (75, 65024), (81, 64988), (93, 64847), (95, 64829),

Gene: Phaedrus_91 Start: 65191, Stop: 64703, Start Num: 47

Candidate Starts for Phaedrus_91:

(Start: 47 @65191 has 43 MA's), (58, 65152), (59, 65149), (64, 65074), (66, 65065), (74, 65023), (83, 64915), (86, 64873), (93, 64810), (95, 64792),

Gene: Phamished_96 Start: 66940, Stop: 66209, Start Num: 15

Candidate Starts for Phamished_96:

(Start: 15 @66940 has 236 MA's), (18, 66901), (23, 66874), (34, 66787), (Start: 41 @66748 has 2 MA's), (Start: 50 @66706 has 1 MA's), (64, 66580), (68, 66559), (72, 66547), (78, 66475), (88, 66361), (93, 66322), (95, 66304),

Gene: Phantasmagoria_83 Start: 63643, Stop: 63113, Start Num: 36

Candidate Starts for Phantasmagoria_83:

(14, 63820), (Start: 25 @63709 has 17 MA's), (Start: 29 @63691 has 2 MA's), (Start: 36 @63643 has 11 MA's), (Start: 38 @63616 has 3 MA's), (42, 63589), (44, 63580), (54, 63538), (56, 63529), (64, 63433), (72, 63397), (78, 63325), (86, 63229), (87, 63223), (91, 63181), (93, 63169),

Gene: Phareon_94 Start: 66465, Stop: 65734, Start Num: 15

Candidate Starts for Phareon_94:

(Start: 15 @66465 has 236 MA's), (18, 66426), (23, 66399), (34, 66312), (Start: 41 @66273 has 2 MA's), (Start: 50 @66231 has 1 MA's), (64, 66105), (68, 66084), (72, 66072), (78, 66000), (88, 65886), (93, 65847), (95, 65829),

Gene: PhatCats2014_96 Start: 67425, Stop: 66694, Start Num: 15

Candidate Starts for PhatCats2014_96:

(Start: 15 @67425 has 236 MA's), (18, 67386), (23, 67359), (34, 67272), (Start: 41 @67233 has 2 MA's), (Start: 50 @67191 has 1 MA's), (64, 67065), (68, 67044), (72, 67032), (78, 66960), (88, 66846), (93, 66807), (95, 66789),

Gene: PhatLouie_99 Start: 67298, Stop: 66567, Start Num: 15

Candidate Starts for PhatLouie_99:

(Start: 15 @67298 has 236 MA's), (18, 67259), (23, 67232), (34, 67145), (Start: 41 @67106 has 2 MA's), (Start: 50 @67064 has 1 MA's), (64, 66938), (68, 66917), (72, 66905), (78, 66833), (88, 66719), (93, 66680), (95, 66662),

Gene: Phayeta_98 Start: 66026, Stop: 65538, Start Num: 47

Candidate Starts for Phayeta_98:

(Start: 47 @66026 has 43 MA's), (58, 65987), (59, 65984), (64, 65909), (66, 65900), (74, 65858), (83, 65750), (86, 65708), (93, 65645), (95, 65627),

Gene: Phelemich_86 Start: 65786, Stop: 65199, Start Num: 38

Candidate Starts for Phelemich_86:

(Start: 38 @65786 has 3 MA's), (64, 65621), (66, 65612), (78, 65516), (81, 65504), (90, 65387), (91, 65375), (93, 65363), (95, 65345), (103, 65306), (105, 65297),

Gene: PhenghisKhan_97 Start: 66929, Stop: 66198, Start Num: 15

Candidate Starts for PhenghisKhan_97:

(Start: 15 @66929 has 236 MA's), (18, 66890), (23, 66863), (34, 66776), (Start: 41 @66737 has 2 MA's), (Start: 50 @66695 has 1 MA's), (64, 66569), (68, 66548), (72, 66536), (78, 66464), (88, 66350), (93, 66311), (95, 66293),

Gene: Pherdinand_98 Start: 67144, Stop: 66413, Start Num: 15

Candidate Starts for Pherdinand_98:

(Start: 15 @67144 has 236 MA's), (18, 67105), (23, 67078), (34, 66991), (Start: 41 @66952 has 2 MA's), (Start: 50 @66910 has 1 MA's), (64, 66784), (68, 66763), (72, 66751), (78, 66679), (88, 66565), (93, 66526), (95, 66508),

Gene: Phergie_97 Start: 66918, Stop: 66187, Start Num: 15

Candidate Starts for Phergie_97:

(Start: 15 @66918 has 236 MA's), (18, 66879), (23, 66852), (34, 66765), (Start: 41 @66726 has 2 MA's), (Start: 50 @66684 has 1 MA's), (64, 66558), (68, 66537), (72, 66525), (78, 66453), (88, 66339), (93, 66300), (95, 66282),

Gene: Philly_95 Start: 65624, Stop: 65136, Start Num: 47

Candidate Starts for Philly_95:

(Start: 47 @65624 has 43 MA's), (58, 65585), (59, 65582), (64, 65507), (66, 65498), (74, 65456), (83, 65348), (86, 65306), (93, 65243), (95, 65225),

Gene: Phipps_94 Start: 66718, Stop: 65987, Start Num: 15

Candidate Starts for Phipps_94:

(Start: 15 @66718 has 236 MA's), (18, 66679), (23, 66652), (34, 66565), (Start: 41 @66526 has 2 MA's), (Start: 50 @66484 has 1 MA's), (64, 66358), (68, 66337), (72, 66325), (78, 66253), (88, 66139), (93, 66100), (95, 66082),

Gene: Phleuron_94 Start: 66729, Stop: 65998, Start Num: 15

Candidate Starts for Phleuron_94:

(10, 66948), (13, 66846), (Start: 15 @66729 has 236 MA's), (18, 66690), (34, 66576), (Start: 41 @66537 has 2 MA's), (64, 66369), (68, 66348), (72, 66336), (78, 66264), (88, 66150), (93, 66111), (95, 66093),

Gene: Phlyer_96 Start: 66486, Stop: 65998, Start Num: 47

Candidate Starts for Phlyer_96:

(Start: 47 @66486 has 43 MA's), (58, 66447), (59, 66444), (64, 66369), (66, 66360), (74, 66318), (83, 66210), (86, 66168), (93, 66105), (95, 66087),

Gene: PhrankReynolds_95 Start: 66923, Stop: 66192, Start Num: 15

Candidate Starts for PhrankReynolds_95:

(Start: 15 @66923 has 236 MA's), (18, 66884), (23, 66857), (34, 66770), (Start: 41 @66731 has 2 MA's), (Start: 50 @66689 has 1 MA's), (64, 66563), (68, 66542), (72, 66530), (78, 66458), (88, 66344), (93, 66305), (95, 66287),

Gene: PhrodoBaggins_99 Start: 67298, Stop: 66567, Start Num: 15

Candidate Starts for PhrodoBaggins_99:

(Start: 15 @67298 has 236 MA's), (18, 67259), (23, 67232), (34, 67145), (Start: 41 @67106 has 2 MA's), (Start: 50 @67064 has 1 MA's), (64, 66938), (68, 66917), (72, 66905), (78, 66833), (88, 66719), (93, 66680), (95, 66662),

Gene: Phunky_94 Start: 66800, Stop: 66069, Start Num: 15

Candidate Starts for Phunky_94:

(Start: 15 @66800 has 236 MA's), (18, 66761), (23, 66734), (34, 66647), (Start: 41 @66608 has 2 MA's), (Start: 50 @66566 has 1 MA's), (64, 66440), (68, 66419), (72, 66407), (78, 66335), (88, 66221), (93, 66182), (95, 66164),

Gene: Piglet_0096 Start: 67417, Stop: 66686, Start Num: 15

Candidate Starts for Piglet_0096:

(Start: 15 @67417 has 236 MA's), (18, 67378), (23, 67351), (34, 67264), (Start: 41 @67225 has 2 MA's), (Start: 50 @67183 has 1 MA's), (64, 67057), (68, 67036), (72, 67024), (78, 66952), (88, 66838), (93, 66799), (95, 66781),

Gene: PinheadLarry_96 Start: 67069, Stop: 66338, Start Num: 15

Candidate Starts for PinheadLarry_96:

(Start: 15 @67069 has 236 MA's), (18, 67030), (23, 67003), (34, 66916), (Start: 41 @66877 has 2 MA's), (Start: 50 @66835 has 1 MA's), (64, 66709), (68, 66688), (72, 66676), (78, 66604), (88, 66490), (93, 66451), (95, 66433),

Gene: Pinkman_96 Start: 67141, Stop: 66410, Start Num: 15

Candidate Starts for Pinkman_96:

(Start: 15 @67141 has 236 MA's), (18, 67102), (23, 67075), (Start: 41 @66949 has 2 MA's), (Start: 50 @66907 has 1 MA's), (64, 66781), (68, 66760), (72, 66748), (78, 66676), (88, 66562), (93, 66523), (95, 66505),

Gene: Pipefish_95 Start: 66160, Stop: 65672, Start Num: 47

Candidate Starts for Pipefish_95:

(Start: 47 @66160 has 43 MA's), (58, 66121), (59, 66118), (64, 66043), (66, 66034), (74, 65992), (83, 65884), (86, 65842), (93, 65779), (95, 65761),

Gene: Pipsqueak_94 Start: 66752, Stop: 66021, Start Num: 15

Candidate Starts for Pipsqueak_94:

(Start: 15 @66752 has 236 MA's), (18, 66713), (23, 66686), (34, 66599), (Start: 41 @66560 has 2 MA's), (64, 66392), (68, 66371), (72, 66359), (78, 66287), (88, 66173), (93, 66134), (95, 66116),

Gene: Placalicious_94 Start: 67510, Stop: 66779, Start Num: 15

Candidate Starts for Placalicious_94:

(Start: 15 @67510 has 236 MA's), (18, 67471), (23, 67444), (34, 67357), (Start: 41 @67318 has 2 MA's), (Start: 50 @67276 has 1 MA's), (64, 67150), (68, 67129), (72, 67117), (78, 67045), (88, 66931), (93, 66892), (95, 66874),

Gene: Plmatters_94 Start: 66743, Stop: 66012, Start Num: 15

Candidate Starts for Plmatters_94:

(Start: 15 @66743 has 236 MA's), (18, 66704), (23, 66677), (34, 66590), (Start: 41 @66551 has 2 MA's), (Start: 50 @66509 has 1 MA's), (64, 66383), (68, 66362), (72, 66350), (78, 66278), (88, 66164), (93, 66125), (95, 66107),

Gene: Podrick_95 Start: 66831, Stop: 66100, Start Num: 15

Candidate Starts for Podrick_95:

(Start: 15 @66831 has 236 MA's), (18, 66792), (23, 66765), (34, 66678), (Start: 41 @66639 has 2 MA's), (Start: 50 @66597 has 1 MA's), (64, 66471), (68, 66450), (72, 66438), (78, 66366), (88, 66252), (93, 66213), (95, 66195),

Gene: Pops_94 Start: 66731, Stop: 66201, Start Num: 41

Candidate Starts for Pops_94:

(Start: 41 @66731 has 2 MA's), (Start: 50 @66698 has 1 MA's), (64, 66572), (68, 66551), (72, 66539), (78, 66467), (88, 66353), (93, 66314), (95, 66296),

Gene: Potter_91 Start: 66752, Stop: 66021, Start Num: 15

Candidate Starts for Potter_91:

(Start: 15 @66752 has 236 MA's), (18, 66713), (23, 66686), (34, 66599), (Start: 41 @66560 has 2 MA's), (Start: 50 @66518 has 1 MA's), (64, 66392), (68, 66371), (72, 66359), (78, 66287), (88, 66173), (93, 66134), (95, 66116),

Gene: Prickles_97 Start: 66878, Stop: 66147, Start Num: 15

Candidate Starts for Prickles_97:

(Start: 15 @66878 has 236 MA's), (18, 66839), (23, 66812), (34, 66725), (Start: 41 @66686 has 2 MA's), (Start: 50 @66644 has 1 MA's), (64, 66518), (68, 66497), (72, 66485), (78, 66413), (88, 66299),

(93, 66260), (95, 66242),

Gene: ProfessorX_94 Start: 66511, Stop: 65780, Start Num: 15

Candidate Starts for ProfessorX_94:

(Start: 15 @66511 has 236 MA's), (18, 66472), (23, 66445), (34, 66358), (Start: 41 @66319 has 2 MA's), (Start: 50 @66277 has 1 MA's), (64, 66151), (68, 66130), (72, 66118), (78, 66046), (88, 65932), (93, 65893), (95, 65875),

Gene: Puhltonio_92 Start: 66748, Stop: 66017, Start Num: 15

Candidate Starts for Puhltonio_92:

(Start: 15 @66748 has 236 MA's), (18, 66709), (23, 66682), (34, 66595), (Start: 41 @66556 has 2 MA's), (Start: 50 @66514 has 1 MA's), (64, 66388), (68, 66367), (72, 66355), (78, 66283), (88, 66169), (93, 66130), (95, 66112),

Gene: QueenBeane_97 Start: 67075, Stop: 66344, Start Num: 15

Candidate Starts for QueenBeane_97:

(Start: 15 @67075 has 236 MA's), (18, 67036), (23, 67009), (34, 66922), (Start: 41 @66883 has 2 MA's), (Start: 50 @66841 has 1 MA's), (64, 66715), (68, 66694), (72, 66682), (78, 66610), (88, 66496), (93, 66457), (95, 66439),

Gene: Quesadilla_90 Start: 66835, Stop: 66329, Start Num: 39

Candidate Starts for Quesadilla_90:

(Start: 39 @66835 has 1 MA's), (49, 66787), (75, 66583), (76, 66580), (79, 66553), (86, 66463), (87, 66457), (93, 66406), (95, 66388), (97, 66370), (99, 66361),

Gene: Quisquilliae_98 Start: 67086, Stop: 66355, Start Num: 15

Candidate Starts for Quisquilliae_98:

(Start: 15 @67086 has 236 MA's), (18, 67047), (23, 67020), (34, 66933), (Start: 41 @66894 has 2 MA's), (Start: 50 @66852 has 1 MA's), (64, 66726), (68, 66705), (72, 66693), (78, 66621), (88, 66507), (93, 66468), (95, 66450),

Gene: Qyrzula_75 Start: 63848, Stop: 63252, Start Num: 25

Candidate Starts for Qyrzula_75:

(14, 63959), (Start: 25 @63848 has 17 MA's), (Start: 29 @63830 has 2 MA's), (Start: 36 @63782 has 11 MA's), (Start: 38 @63755 has 3 MA's), (42, 63728), (44, 63719), (54, 63677), (56, 63668), (64, 63572), (72, 63536), (78, 63464), (86, 63368), (87, 63362), (91, 63320), (93, 63308),

Gene: RagingRooster_96 Start: 65772, Stop: 65284, Start Num: 47

Candidate Starts for RagingRooster_96:

(Start: 47 @65772 has 43 MA's), (58, 65733), (59, 65730), (64, 65655), (66, 65646), (74, 65604), (83, 65496), (86, 65454), (93, 65391), (95, 65373),

Gene: RedMaple_95 Start: 67409, Stop: 66678, Start Num: 15

Candidate Starts for RedMaple_95:

(10, 67628), (13, 67526), (Start: 15 @67409 has 236 MA's), (18, 67370), (23, 67343), (28, 67307), (34, 67256), (Start: 41 @67217 has 2 MA's), (64, 67049), (68, 67028), (72, 67016), (78, 66944), (88, 66830), (93, 66791), (95, 66773),

Gene: Reprobate_88 Start: 65791, Stop: 65204, Start Num: 38

Candidate Starts for Reprobate_88:

(Start: 38 @65791 has 3 MA's), (64, 65626), (66, 65617), (78, 65521), (81, 65509), (90, 65392), (91, 65380), (93, 65368), (95, 65350), (103, 65311), (105, 65302),

Gene: Rhinoforte_84 Start: 63745, Stop: 63149, Start Num: 25

Candidate Starts for Rhinoforte_84:

(14, 63856), (Start: 25 @63745 has 17 MA's), (Start: 29 @63727 has 2 MA's), (Start: 36 @63679 has 11 MA's), (Start: 38 @63652 has 3 MA's), (42, 63625), (44, 63616), (54, 63574), (56, 63565), (64, 63469), (72, 63433), (78, 63361), (86, 63265), (87, 63259), (91, 63217), (93, 63205),

Gene: Ricotta_94 Start: 66771, Stop: 66040, Start Num: 15

Candidate Starts for Ricotta_94:

(Start: 15 @66771 has 236 MA's), (18, 66732), (23, 66705), (34, 66618), (Start: 41 @66579 has 2 MA's), (Start: 50 @66537 has 1 MA's), (64, 66411), (68, 66390), (72, 66378), (78, 66306), (88, 66192), (93, 66153), (95, 66135),

Gene: Riggan_98 Start: 67256, Stop: 66525, Start Num: 15

Candidate Starts for Riggan_98:

(Start: 15 @67256 has 236 MA's), (18, 67217), (23, 67190), (34, 67103), (Start: 41 @67064 has 2 MA's), (Start: 50 @67022 has 1 MA's), (64, 66896), (68, 66875), (72, 66863), (78, 66791), (88, 66677), (93, 66638), (95, 66620),

Gene: Rimu_100 Start: 67235, Stop: 66504, Start Num: 15

Candidate Starts for Rimu_100:

(Start: 15 @67235 has 236 MA's), (18, 67196), (23, 67169), (Start: 41 @67043 has 2 MA's), (Start: 50 @67001 has 1 MA's), (64, 66875), (68, 66854), (72, 66842), (78, 66770), (88, 66656), (93, 66617), (95, 66599),

Gene: Rita1961_97 Start: 66117, Stop: 65629, Start Num: 47

Candidate Starts for Rita1961_97:

(Start: 47 @66117 has 43 MA's), (58, 66078), (59, 66075), (64, 66000), (66, 65991), (74, 65949), (83, 65841), (86, 65799), (93, 65736), (95, 65718),

Gene: Roliet_94 Start: 66115, Stop: 65384, Start Num: 15

Candidate Starts for Roliet_94:

(Start: 15 @66115 has 236 MA's), (18, 66076), (23, 66049), (34, 65962), (Start: 41 @65923 has 2 MA's), (64, 65755), (68, 65734), (72, 65722), (88, 65536), (93, 65497), (95, 65479),

Gene: RomaT_96 Start: 66340, Stop: 65852, Start Num: 47

Candidate Starts for RomaT_96:

(Start: 47 @66340 has 43 MA's), (58, 66301), (59, 66298), (64, 66223), (66, 66214), (74, 66172), (83, 66064), (86, 66022), (93, 65959), (95, 65941),

Gene: Rosebush_82 Start: 63817, Stop: 63221, Start Num: 25

Candidate Starts for Rosebush_82:

(14, 63928), (Start: 25 @63817 has 17 MA's), (Start: 29 @63799 has 2 MA's), (Start: 36 @63751 has 11 MA's), (Start: 38 @63724 has 3 MA's), (44, 63688), (54, 63646), (56, 63637), (64, 63541), (72, 63505), (78, 63433), (86, 63337), (87, 63331), (91, 63289), (93, 63277),

Gene: Roy17_94 Start: 66481, Stop: 65750, Start Num: 15

Candidate Starts for Roy17_94:

(Start: 15 @66481 has 236 MA's), (18, 66442), (23, 66415), (Start: 41 @66289 has 2 MA's), (Start: 50 @66247 has 1 MA's), (64, 66121), (68, 66100), (72, 66088), (78, 66016), (88, 65902), (93, 65863), (95, 65845),

Gene: SDcharge11_95 Start: 66131, Stop: 65400, Start Num: 15

Candidate Starts for SDcharge11_95:

(10, 66350), (13, 66248), (Start: 15 @66131 has 236 MA's), (18, 66092), (23, 66065), (28, 66029), (34, 65978), (Start: 41 @65939 has 2 MA's), (64, 65771), (68, 65750), (72, 65738), (88, 65552), (93, 65513), (95, 65495),

Gene: Sabella_84 Start: 63653, Stop: 63057, Start Num: 25

Candidate Starts for Sabella_84:

(14, 63764), (Start: 25 @63653 has 17 MA's), (Start: 29 @63635 has 2 MA's), (Start: 36 @63587 has 11 MA's), (Start: 38 @63560 has 3 MA's), (42, 63533), (44, 63524), (54, 63482), (56, 63473), (64, 63377), (72, 63341), (78, 63269), (86, 63173), (87, 63167), (91, 63125), (93, 63113),

Gene: Saguaro_82 Start: 64421, Stop: 63921, Start Num: 50

Candidate Starts for Saguaro_82:

(Start: 50 @64421 has 1 MA's), (72, 64265), (78, 64196), (81, 64184), (86, 64103), (93, 64043), (97, 64007), (98, 64004), (105, 63980), (107, 63974),

Gene: Samaymay_97 Start: 67075, Stop: 66344, Start Num: 15

Candidate Starts for Samaymay_97:

(Start: 15 @67075 has 236 MA's), (18, 67036), (23, 67009), (34, 66922), (Start: 41 @66883 has 2 MA's), (Start: 50 @66841 has 1 MA's), (64, 66715), (68, 66694), (72, 66682), (78, 66610), (88, 66496), (93, 66457), (95, 66439),

Gene: SassyCat97_95 Start: 66743, Stop: 66012, Start Num: 15

Candidate Starts for SassyCat97_95:

(Start: 15 @66743 has 236 MA's), (18, 66704), (23, 66677), (34, 66590), (Start: 41 @66551 has 2 MA's), (Start: 50 @66509 has 1 MA's), (64, 66383), (68, 66362), (72, 66350), (78, 66278), (88, 66164), (93, 66125), (95, 66107),

Gene: Schadenfreude_97 Start: 66792, Stop: 66061, Start Num: 15

Candidate Starts for Schadenfreude_97:

(10, 67011), (13, 66909), (Start: 15 @66792 has 236 MA's), (18, 66753), (23, 66726), (28, 66690), (34, 66639), (Start: 41 @66600 has 2 MA's), (64, 66432), (68, 66411), (72, 66399), (78, 66327), (88, 66213), (93, 66174), (95, 66156),

Gene: Schueller_96 Start: 67016, Stop: 66285, Start Num: 15

Candidate Starts for Schueller_96:

(10, 67235), (13, 67133), (Start: 15 @67016 has 236 MA's), (18, 66977), (34, 66863), (Start: 41 @66824 has 2 MA's), (64, 66656), (68, 66635), (72, 66623), (78, 66551), (88, 66437), (93, 66398), (95, 66380),

Gene: Scoot17C_97 Start: 66857, Stop: 66126, Start Num: 15

Candidate Starts for Scoot17C_97:

(Start: 15 @66857 has 236 MA's), (18, 66818), (23, 66791), (34, 66704), (Start: 41 @66665 has 2 MA's), (Start: 50 @66623 has 1 MA's), (64, 66497), (68, 66476), (72, 66464), (78, 66392), (88, 66278), (93, 66239), (95, 66221),

Gene: Scrick_98 Start: 67126, Stop: 66395, Start Num: 15

Candidate Starts for Scrick_98:

(Start: 15 @67126 has 236 MA's), (18, 67087), (23, 67060), (34, 66973), (Start: 41 @66934 has 2 MA's), (Start: 50 @66892 has 1 MA's), (64, 66766), (68, 66745), (72, 66733), (78, 66661), (88, 66547), (93, 66508), (95, 66490),

Gene: Selr12_101 Start: 67167, Stop: 66436, Start Num: 15

Candidate Starts for Selr12_101:

(Start: 15 @67167 has 236 MA's), (18, 67128), (23, 67101), (34, 67014), (Start: 41 @66975 has 2 MA's), (Start: 50 @66933 has 1 MA's), (64, 66807), (68, 66786), (72, 66774), (78, 66702), (88, 66588), (93, 66549), (95, 66531),

Gene: Serendipitous_89 Start: 65633, Stop: 65031, Start Num: 38

Candidate Starts for Serendipitous_89:

(Start: 38 @65633 has 3 MA's), (64, 65468), (69, 65444), (74, 65420), (81, 65354), (85, 65273), (86, 65270), (93, 65213), (95, 65195),

Gene: Serendipity_96 Start: 67229, Stop: 66498, Start Num: 15

Candidate Starts for Serendipity_96:

(Start: 15 @67229 has 236 MA's), (18, 67190), (23, 67163), (34, 67076), (Start: 41 @67037 has 2 MA's), (Start: 50 @66995 has 1 MA's), (64, 66869), (68, 66848), (72, 66836), (78, 66764), (88, 66650), (93, 66611), (95, 66593),

Gene: Serpentine_0099 Start: 67309, Stop: 66578, Start Num: 15

Candidate Starts for Serpentine_0099:

(Start: 15 @67309 has 236 MA's), (18, 67270), (23, 67243), (34, 67156), (Start: 41 @67117 has 2 MA's), (Start: 50 @67075 has 1 MA's), (64, 66949), (68, 66928), (72, 66916), (78, 66844), (88, 66730), (93, 66691), (95, 66673),

Gene: Sheila_91 Start: 66309, Stop: 65578, Start Num: 15

Candidate Starts for Sheila_91:

(Start: 15 @66309 has 236 MA's), (18, 66270), (23, 66243), (34, 66156), (Start: 41 @66117 has 2 MA's), (Start: 50 @66075 has 1 MA's), (64, 65949), (68, 65928), (72, 65916), (78, 65844), (88, 65730), (93, 65691), (95, 65673),

Gene: ShiVal_96 Start: 66780, Stop: 66049, Start Num: 15

Candidate Starts for ShiVal_96:

(Start: 15 @66780 has 236 MA's), (18, 66741), (23, 66714), (34, 66627), (Start: 41 @66588 has 2 MA's), (Start: 50 @66546 has 1 MA's), (64, 66420), (68, 66399), (72, 66387), (78, 66315), (88, 66201), (93, 66162), (95, 66144),

Gene: Sigman_96 Start: 66736, Stop: 66005, Start Num: 15

Candidate Starts for Sigman_96:

(Start: 15 @66736 has 236 MA's), (18, 66697), (23, 66670), (34, 66583), (Start: 41 @66544 has 2 MA's), (Start: 50 @66502 has 1 MA's), (64, 66376), (68, 66355), (72, 66343), (78, 66271), (88, 66157), (93, 66118), (95, 66100),

Gene: Simielle_97 Start: 66722, Stop: 65991, Start Num: 15

Candidate Starts for Simielle_97:

(Start: 15 @66722 has 236 MA's), (18, 66683), (23, 66656), (34, 66569), (Start: 41 @66530 has 2 MA's), (Start: 50 @66488 has 1 MA's), (64, 66362), (68, 66341), (72, 66329), (78, 66257), (88, 66143), (93, 66104), (95, 66086),

Gene: SirJeffery_87 Start: 65697, Stop: 65122, Start Num: 38

Candidate Starts for SirJeffery_87:

(22, 65790), (32, 65748), (Start: 38 @65697 has 3 MA's), (64, 65532), (66, 65523), (81, 65415), (90, 65298), (93, 65274), (95, 65256), (103, 65220),

Gene: Skippy_97 Start: 67151, Stop: 66420, Start Num: 15

Candidate Starts for Skippy_97:

(Start: 15 @67151 has 236 MA's), (18, 67112), (23, 67085), (34, 66998), (Start: 41 @66959 has 2 MA's), (Start: 50 @66917 has 1 MA's), (64, 66791), (68, 66770), (72, 66758), (78, 66686), (88, 66572), (93, 66533), (95, 66515),

Gene: Slatt_99 Start: 67407, Stop: 66676, Start Num: 15

Candidate Starts for Slatt_99:

(Start: 15 @67407 has 236 MA's), (18, 67368), (23, 67341), (34, 67254), (Start: 41 @67215 has 2 MA's), (Start: 50 @67173 has 1 MA's), (64, 67047), (68, 67026), (72, 67014), (78, 66942), (88, 66828), (93, 66789), (95, 66771),

Gene: SlippinJimmy_99 Start: 67140, Stop: 66652, Start Num: 47

Candidate Starts for SlippinJimmy_99:

(Start: 47 @67140 has 43 MA's), (58, 67101), (59, 67098), (64, 67023), (66, 67014), (74, 66972), (83, 66864), (86, 66822), (93, 66759), (95, 66741),

Gene: Soile_98 Start: 67276, Stop: 66545, Start Num: 15

Candidate Starts for Soile_98:

(Start: 15 @67276 has 236 MA's), (18, 67237), (23, 67210), (34, 67123), (Start: 41 @67084 has 2 MA's), (Start: 50 @67042 has 1 MA's), (64, 66916), (68, 66895), (72, 66883), (78, 66811), (88, 66697), (93, 66658), (95, 66640),

Gene: Solosis_95 Start: 66744, Stop: 66013, Start Num: 15

Candidate Starts for Solosis_95:

(Start: 15 @66744 has 236 MA's), (18, 66705), (23, 66678), (34, 66591), (Start: 41 @66552 has 2 MA's), (Start: 50 @66510 has 1 MA's), (64, 66384), (68, 66363), (72, 66351), (78, 66279), (88, 66165), (93, 66126), (95, 66108),

Gene: Sophia_95 Start: 66731, Stop: 66000, Start Num: 15

Candidate Starts for Sophia_95:

(Start: 15 @66731 has 236 MA's), (18, 66692), (23, 66665), (34, 66578), (Start: 41 @66539 has 2 MA's), (Start: 50 @66497 has 1 MA's), (64, 66371), (68, 66350), (72, 66338), (78, 66266), (88, 66152), (93, 66113), (95, 66095),

Gene: Soto_93 Start: 66172, Stop: 65441, Start Num: 15

Candidate Starts for Soto_93:

(Start: 15 @66172 has 236 MA's), (18, 66133), (23, 66106), (34, 66019), (Start: 41 @65980 has 2 MA's), (64, 65812), (68, 65791), (72, 65779), (78, 65707), (88, 65593), (93, 65554), (95, 65536),

Gene: Spartan300_96 Start: 66993, Stop: 66262, Start Num: 15

Candidate Starts for Spartan300_96:

(Start: 15 @66993 has 236 MA's), (18, 66954), (23, 66927), (34, 66840), (Start: 41 @66801 has 2 MA's), (Start: 50 @66759 has 1 MA's), (64, 66633), (68, 66612), (72, 66600), (78, 66528), (88, 66414), (93, 66375), (95, 66357),

Gene: Squid_96 Start: 67021, Stop: 66290, Start Num: 15

Candidate Starts for Squid_96:

(Start: 15 @67021 has 236 MA's), (18, 66982), (23, 66955), (34, 66868), (Start: 41 @66829 has 2 MA's), (Start: 50 @66787 has 1 MA's), (64, 66661), (68, 66640), (72, 66628), (78, 66556), (88, 66442), (93, 66403), (95, 66385),

Gene: Squiggle_96 Start: 66750, Stop: 66019, Start Num: 15

Candidate Starts for Squiggle_96:

(Start: 15 @66750 has 236 MA's), (18, 66711), (23, 66684), (34, 66597), (Start: 41 @66558 has 2 MA's), (Start: 50 @66516 has 1 MA's), (64, 66390), (68, 66369), (72, 66357), (78, 66285), (88, 66171), (93, 66132), (95, 66114),

Gene: StinkyVeggy_87 Start: 65724, Stop: 65134, Start Num: 38

Candidate Starts for StinkyVeggy_87:

(19, 65826), (21, 65814), (27, 65796), (Start: 38 @65724 has 3 MA's), (64, 65550), (66, 65541), (81, 65433), (90, 65316), (93, 65292), (95, 65274), (105, 65217),

Gene: Struggle_97 Start: 66848, Stop: 66117, Start Num: 15

Candidate Starts for Struggle_97:

(Start: 15 @66848 has 236 MA's), (18, 66809), (23, 66782), (34, 66695), (Start: 41 @66656 has 2 MA's), (Start: 50 @66614 has 1 MA's), (64, 66488), (68, 66467), (72, 66455), (78, 66383), (88, 66269), (93, 66230), (95, 66212),

Gene: Suffolk_92 Start: 66677, Stop: 65946, Start Num: 15

Candidate Starts for Suffolk_92:

(Start: 15 @66677 has 236 MA's), (18, 66638), (23, 66611), (34, 66524), (Start: 41 @66485 has 2 MA's), (Start: 50 @66443 has 1 MA's), (64, 66317), (68, 66296), (72, 66284), (78, 66212), (88, 66098), (93, 66059), (95, 66041),

Gene: Suigeneris_90 Start: 66233, Stop: 65547, Start Num: 30

Candidate Starts for Suigeneris_90:

(2, 67112), (7, 66617), (20, 66287), (Start: 30 @66233 has 3 MA's), (Start: 38 @66158 has 3 MA's), (64, 65993), (66, 65984), (81, 65876), (90, 65759), (93, 65735), (95, 65717), (103, 65681), (112, 65600),

Gene: Surely_97 Start: 67313, Stop: 66582, Start Num: 15

Candidate Starts for Surely_97:

(Start: 15 @67313 has 236 MA's), (18, 67274), (23, 67247), (Start: 41 @67121 has 2 MA's), (Start: 50 @67079 has 1 MA's), (64, 66953), (68, 66932), (72, 66920), (78, 66848), (88, 66734), (93, 66695), (95, 66677),

Gene: Swiphy_101 Start: 67298, Stop: 66567, Start Num: 15

Candidate Starts for Swiphy_101:

(Start: 15 @67298 has 236 MA's), (18, 67259), (23, 67232), (34, 67145), (Start: 41 @67106 has 2 MA's), (Start: 50 @67064 has 1 MA's), (64, 66938), (68, 66917), (72, 66905), (78, 66833), (88, 66719), (93, 66680), (95, 66662),

Gene: Swish_98 Start: 67160, Stop: 66429, Start Num: 15

Candidate Starts for Swish_98:

(Start: 15 @67160 has 236 MA's), (18, 67121), (23, 67094), (34, 67007), (Start: 41 @66968 has 2 MA's), (Start: 50 @66926 has 1 MA's), (64, 66800), (68, 66779), (72, 66767), (78, 66695), (88, 66581), (93, 66542), (95, 66524),

Gene: SynergyX_97 Start: 66082, Stop: 65594, Start Num: 47

Candidate Starts for SynergyX_97:

(Start: 47 @66082 has 43 MA's), (58, 66043), (59, 66040), (64, 65965), (66, 65956), (74, 65914), (83, 65806), (86, 65764), (93, 65701), (95, 65683),

Gene: TA17A_85 Start: 63594, Stop: 63064, Start Num: 36

Candidate Starts for TA17A_85:

(14, 63771), (Start: 25 @63660 has 17 MA's), (Start: 29 @63642 has 2 MA's), (Start: 36 @63594 has 11 MA's), (Start: 38 @63567 has 3 MA's), (44, 63531), (54, 63489), (56, 63480), (64, 63384), (72, 63348), (78, 63276), (86, 63180), (87, 63174), (91, 63132), (93, 63120),

Gene: TallGrassMM_96 Start: 66809, Stop: 66078, Start Num: 15

Candidate Starts for TallGrassMM_96:

(Start: 15 @66809 has 236 MA's), (18, 66770), (23, 66743), (34, 66656), (Start: 41 @66617 has 2 MA's), (Start: 50 @66575 has 1 MA's), (64, 66449), (68, 66428), (72, 66416), (78, 66344), (88, 66230), (93, 66191), (95, 66173),

Gene: Telesworld_95 Start: 66883, Stop: 66152, Start Num: 15

Candidate Starts for Telesworld_95:

(Start: 15 @66883 has 236 MA's), (18, 66844), (23, 66817), (34, 66730), (Start: 41 @66691 has 2 MA's), (Start: 50 @66649 has 1 MA's), (64, 66523), (68, 66502), (72, 66490), (78, 66418), (88, 66304), (93, 66265), (95, 66247),

Gene: Thora_95 Start: 67264, Stop: 66533, Start Num: 15

Candidate Starts for Thora_95:

(Start: 15 @67264 has 236 MA's), (18, 67225), (23, 67198), (34, 67111), (Start: 41 @67072 has 2 MA's), (Start: 50 @67030 has 1 MA's), (64, 66904), (68, 66883), (72, 66871), (78, 66799), (88, 66685), (93, 66646), (95, 66628),

Gene: ThreeOh3D2_98 Start: 67417, Stop: 66686, Start Num: 15

Candidate Starts for ThreeOh3D2_98:

(Start: 15 @67417 has 236 MA's), (18, 67378), (23, 67351), (34, 67264), (Start: 41 @67225 has 2 MA's), (Start: 50 @67183 has 1 MA's), (64, 67057), (68, 67036), (72, 67024), (78, 66952), (88, 66838), (93, 66799), (95, 66781),

Gene: Timmi_95 Start: 66780, Stop: 66049, Start Num: 15

Candidate Starts for Timmi_95:

(Start: 15 @66780 has 236 MA's), (18, 66741), (23, 66714), (34, 66627), (Start: 41 @66588 has 2 MA's), (Start: 50 @66546 has 1 MA's), (64, 66420), (68, 66399), (72, 66387), (78, 66315), (88, 66201), (93, 66162), (95, 66144),

Gene: Tinciduntolum_85 Start: 63824, Stop: 63228, Start Num: 25

Candidate Starts for Tinciduntolum_85:

(14, 63935), (Start: 25 @63824 has 17 MA's), (Start: 29 @63806 has 2 MA's), (Start: 36 @63758 has 11 MA's), (Start: 38 @63731 has 3 MA's), (42, 63704), (44, 63695), (54, 63653), (56, 63644), (64, 63548), (72, 63512), (78, 63440), (86, 63344), (87, 63338), (91, 63296), (93, 63284),

Gene: TomBombadil_97 Start: 67305, Stop: 66574, Start Num: 15

Candidate Starts for TomBombadil_97:

(Start: 15 @67305 has 236 MA's), (18, 67266), (23, 67239), (34, 67152), (Start: 41 @67113 has 2 MA's), (Start: 50 @67071 has 1 MA's), (64, 66945), (68, 66924), (72, 66912), (78, 66840), (88, 66726), (93, 66687), (95, 66669),

Gene: Tomlarah_97 Start: 67613, Stop: 66882, Start Num: 15

Candidate Starts for Tomlarah_97:

(Start: 15 @67613 has 236 MA's), (18, 67574), (23, 67547), (34, 67460), (Start: 41 @67421 has 2 MA's), (Start: 50 @67379 has 1 MA's), (64, 67253), (68, 67232), (72, 67220), (78, 67148), (88, 67034), (93, 66995), (95, 66977),

Gene: Toni_96 Start: 67209, Stop: 66478, Start Num: 15

Candidate Starts for Toni_96:

(Start: 15 @67209 has 236 MA's), (18, 67170), (23, 67143), (34, 67056), (Start: 41 @67017 has 2 MA's), (Start: 50 @66975 has 1 MA's), (64, 66849), (68, 66828), (72, 66816), (78, 66744), (88, 66630), (93, 66591), (95, 66573),

Gene: Tooj_94 Start: 66423, Stop: 65692, Start Num: 15

Candidate Starts for Tooj_94:

(Start: 15 @66423 has 236 MA's), (18, 66384), (23, 66357), (34, 66270), (Start: 41 @66231 has 2 MA's), (Start: 50 @66189 has 1 MA's), (64, 66063), (68, 66042), (72, 66030), (88, 65844), (93, 65805), (95, 65787),

Gene: Tres_84 Start: 63660, Stop: 63079, Start Num: 29

Candidate Starts for Tres_84:

(14, 63789), (Start: 25 @63678 has 17 MA's), (Start: 29 @63660 has 2 MA's), (Start: 36 @63609 has 11 MA's), (Start: 38 @63582 has 3 MA's), (42, 63555), (44, 63546), (54, 63504), (56, 63495), (64, 63399), (72, 63363), (78, 63291), (86, 63195), (87, 63189), (91, 63147), (93, 63135),

Gene: True_98 Start: 67125, Stop: 66394, Start Num: 15

Candidate Starts for True_98:

(Start: 15 @67125 has 236 MA's), (18, 67086), (23, 67059), (34, 66972), (Start: 41 @66933 has 2 MA's), (Start: 50 @66891 has 1 MA's), (64, 66765), (68, 66744), (72, 66732), (78, 66660), (88, 66546), (93, 66507), (95, 66489),

Gene: Trypo_97 Start: 67477, Stop: 66746, Start Num: 15

Candidate Starts for Trypo_97:

(Start: 15 @67477 has 236 MA's), (18, 67438), (23, 67411), (34, 67324), (Start: 41 @67285 has 2 MA's), (Start: 50 @67243 has 1 MA's), (64, 67117), (68, 67096), (72, 67084), (78, 67012), (88, 66898), (93, 66859), (95, 66841),

Gene: Tydolla_92 Start: 65758, Stop: 65270, Start Num: 47

Candidate Starts for Tydolla_92:

(Start: 47 @65758 has 43 MA's), (58, 65719), (59, 65716), (64, 65641), (66, 65632), (74, 65590), (83, 65482), (86, 65440), (93, 65377), (95, 65359),

Gene: TyrionL_97 Start: 66839, Stop: 66108, Start Num: 15

Candidate Starts for TyrionL_97:

(10, 67058), (13, 66956), (Start: 15 @66839 has 236 MA's), (18, 66800), (34, 66686), (Start: 41 @66647 has 2 MA's), (64, 66479), (68, 66458), (72, 66446), (78, 66374), (88, 66260), (93, 66221), (95, 66203),

Gene: UAch1_97 Start: 66830, Stop: 66099, Start Num: 15

Candidate Starts for UAch1_97:

(Start: 15 @66830 has 236 MA's), (18, 66791), (23, 66764), (34, 66677), (Start: 41 @66638 has 2 MA's), (Start: 50 @66596 has 1 MA's), (64, 66470), (68, 66449), (72, 66437), (78, 66365), (88, 66251), (93, 66212), (95, 66194),

Gene: UncleHowie_93 Start: 66441, Stop: 65710, Start Num: 15

Candidate Starts for UncleHowie_93:

(Start: 15 @66441 has 236 MA's), (18, 66402), (23, 66375), (34, 66288), (Start: 41 @66249 has 2 MA's), (Start: 50 @66207 has 1 MA's), (64, 66081), (68, 66060), (72, 66048), (78, 65976), (88, 65862), (93, 65823), (95, 65805),

Gene: Usavi_97 Start: 67603, Stop: 66872, Start Num: 15

Candidate Starts for Usavi_97:

(Start: 15 @67603 has 236 MA's), (18, 67564), (23, 67537), (34, 67450), (Start: 41 @67411 has 2 MA's), (Start: 50 @67369 has 1 MA's), (64, 67243), (68, 67222), (72, 67210), (78, 67138), (88, 67024), (93, 66985), (95, 66967),

Gene: Valjean_95 Start: 66985, Stop: 66254, Start Num: 15

Candidate Starts for Valjean_95:

(Start: 15 @66985 has 236 MA's), (18, 66946), (23, 66919), (Start: 41 @66793 has 2 MA's), (Start: 50 @66751 has 1 MA's), (64, 66625), (68, 66604), (72, 66592), (78, 66520), (88, 66406), (93, 66367), (95, 66349),

Gene: Vaticameos_94 Start: 65312, Stop: 64581, Start Num: 15

Candidate Starts for Vaticameos_94:

(Start: 15 @65312 has 236 MA's), (18, 65273), (23, 65246), (34, 65159), (Start: 41 @65120 has 2 MA's), (Start: 50 @65078 has 1 MA's), (64, 64952), (68, 64931), (72, 64919), (78, 64847), (88, 64733), (93, 64694), (95, 64676),

Gene: Veritas_96 Start: 66920, Stop: 66189, Start Num: 15

Candidate Starts for Veritas_96:

(10, 67139), (13, 67037), (Start: 15 @66920 has 236 MA's), (18, 66881), (34, 66767), (Start: 41 @66728 has 2 MA's), (64, 66560), (68, 66539), (72, 66527), (78, 66455), (88, 66341), (93, 66302), (95, 66284),

Gene: Vincenzo_89 Start: 68034, Stop: 67441, Start Num: 37

Candidate Starts for Vincenzo_89:

(Start: 37 @68034 has 3 MA's), (58, 67941), (61, 67908), (72, 67830), (75, 67782), (81, 67746), (82, 67707), (85, 67665), (91, 67614), (93, 67602), (95, 67584), (100, 67554), (101, 67542), (104, 67530), (106, 67521),

Gene: Virapocalypse_98 Start: 67107, Stop: 66376, Start Num: 15

Candidate Starts for Virapocalypse_98:

(Start: 15 @67107 has 236 MA's), (18, 67068), (23, 67041), (34, 66954), (Start: 41 @66915 has 2 MA's), (Start: 50 @66873 has 1 MA's), (64, 66747), (68, 66726), (72, 66714), (78, 66642), (88, 66528), (93, 66489), (95, 66471),

Gene: Virgeve_95 Start: 66725, Stop: 65994, Start Num: 15

Candidate Starts for Virgeve_95:

(Start: 15 @66725 has 236 MA's), (18, 66686), (23, 66659), (Start: 41 @66533 has 2 MA's), (Start: 50 @66491 has 1 MA's), (64, 66365), (68, 66344), (72, 66332), (78, 66260), (88, 66146), (93, 66107), (95, 66089),

Gene: Vista_96 Start: 66919, Stop: 66188, Start Num: 15

Candidate Starts for Vista_96:

(Start: 15 @66919 has 236 MA's), (18, 66880), (23, 66853), (34, 66766), (Start: 41 @66727 has 2 MA's), (Start: 50 @66685 has 1 MA's), (64, 66559), (68, 66538), (72, 66526), (78, 66454), (88, 66340), (93, 66301), (95, 66283),

Gene: Vortex_95 Start: 67025, Stop: 66294, Start Num: 15

Candidate Starts for Vortex_95:

(Start: 15 @67025 has 236 MA's), (18, 66986), (23, 66959), (34, 66872), (Start: 41 @66833 has 2 MA's), (Start: 50 @66791 has 1 MA's), (64, 66665), (68, 66644), (72, 66632), (78, 66560), (88, 66446), (93, 66407), (95, 66389),

Gene: Wallhey_98 Start: 67024, Stop: 66293, Start Num: 15

Candidate Starts for Wallhey_98:

(Start: 15 @67024 has 236 MA's), (18, 66985), (23, 66958), (Start: 41 @66832 has 2 MA's), (Start: 50 @66790 has 1 MA's), (64, 66664), (68, 66643), (72, 66631), (78, 66559), (88, 66445), (93, 66406), (95, 66388),

Gene: Waterdiva_98 Start: 67291, Stop: 66560, Start Num: 15

Candidate Starts for Waterdiva_98:

(Start: 15 @67291 has 236 MA's), (18, 67252), (23, 67225), (34, 67138), (Start: 41 @67099 has 2 MA's), (Start: 50 @67057 has 1 MA's), (64, 66931), (68, 66910), (72, 66898), (78, 66826), (88, 66712), (93, 66673), (95, 66655),

Gene: Weher20_94 Start: 67363, Stop: 66632, Start Num: 15

Candidate Starts for Weher20_94:

(Start: 15 @67363 has 236 MA's), (18, 67324), (23, 67297), (34, 67210), (Start: 41 @67171 has 2 MA's), (Start: 50 @67129 has 1 MA's), (64, 67003), (68, 66982), (72, 66970), (78, 66898), (88, 66784), (93, 66745), (95, 66727),

Gene: West99_84 Start: 63829, Stop: 63251, Start Num: 29

Candidate Starts for West99_84:

(14, 63958), (Start: 25 @63847 has 17 MA's), (Start: 29 @63829 has 2 MA's), (Start: 36 @63781 has 11 MA's), (Start: 38 @63754 has 3 MA's), (42, 63727), (44, 63718), (54, 63676), (56, 63667), (64, 63571), (72, 63535), (78, 63463), (86, 63367), (87, 63361), (91, 63319), (93, 63307),

Gene: Windsor_96 Start: 67050, Stop: 66298, Start Num: 15

Candidate Starts for Windsor_96:

(10, 67269), (13, 67167), (Start: 15 @67050 has 236 MA's), (18, 67011), (34, 66897), (Start: 41 @66858 has 2 MA's), (64, 66690), (68, 66669), (72, 66657), (78, 66585), (88, 66471), (93, 66432), (95, 66414),

Gene: Xavier_96 Start: 66918, Stop: 66187, Start Num: 15

Candidate Starts for Xavier_96:

(Start: 15 @66918 has 236 MA's), (18, 66879), (23, 66852), (34, 66765), (Start: 41 @66726 has 2 MA's), (Start: 50 @66684 has 1 MA's), (64, 66558), (68, 66537), (72, 66525), (78, 66453), (88, 66339), (93, 66300), (95, 66282),

Gene: Yahalom_94 Start: 65583, Stop: 65095, Start Num: 47

Candidate Starts for Yahalom_94:

(Start: 47 @65583 has 43 MA's), (58, 65544), (59, 65541), (64, 65466), (66, 65457), (74, 65415), (83, 65307), (86, 65265), (93, 65202), (95, 65184),

Gene: Yinz_94 Start: 65180, Stop: 64692, Start Num: 47

Candidate Starts for Yinz_94:

(16, 65402), (31, 65300), (Start: 47 @65180 has 43 MA's), (58, 65141), (59, 65138), (64, 65063), (66, 65054), (74, 65012), (83, 64904), (86, 64862), (93, 64799), (95, 64781),

Gene: Yoshand_98 Start: 67143, Stop: 66412, Start Num: 15

Candidate Starts for Yoshand_98:

(Start: 15 @67143 has 236 MA's), (18, 67104), (23, 67077), (34, 66990), (Start: 41 @66951 has 2 MA's), (Start: 50 @66909 has 1 MA's), (64, 66783), (68, 66762), (72, 66750), (78, 66678), (88, 66564), (93, 66525), (95, 66507),

Gene: YouGoGlencoco_97 Start: 67033, Stop: 66302, Start Num: 15

Candidate Starts for YouGoGlencoco_97:

(Start: 15 @67033 has 236 MA's), (18, 66994), (23, 66967), (34, 66880), (Start: 41 @66841 has 2 MA's), (Start: 50 @66799 has 1 MA's), (64, 66673), (68, 66652), (72, 66640), (78, 66568), (88, 66454), (93, 66415), (95, 66397),

Gene: Zaider_98 Start: 67408, Stop: 66677, Start Num: 15

Candidate Starts for Zaider_98:

(Start: 15 @67408 has 236 MA's), (18, 67369), (23, 67342), (34, 67255), (Start: 41 @67216 has 2 MA's), (Start: 50 @67174 has 1 MA's), (64, 67048), (68, 67027), (72, 67015), (78, 66943), (88, 66829), (93, 66790), (95, 66772),

Gene: Zelda_97 Start: 67364, Stop: 66633, Start Num: 15

Candidate Starts for Zelda_97:

(Start: 15 @67364 has 236 MA's), (18, 67325), (23, 67298), (34, 67211), (Start: 41 @67172 has 2 MA's), (Start: 50 @67130 has 1 MA's), (64, 67004), (68, 66983), (72, 66971), (78, 66899), (88, 66785), (93, 66746), (95, 66728),

Gene: Zenteno07_105 Start: 69900, Stop: 69328, Start Num: 33

Candidate Starts for Zenteno07_105:

(9, 70275), (Start: 33 @69900 has 1 MA's), (Start: 41 @69834 has 2 MA's), (49, 69792), (56, 69762), (72, 69633), (74, 69615), (78, 69558), (80, 69549), (93, 69399), (94, 69384),

Gene: Zonia_97 Start: 67474, Stop: 66743, Start Num: 15

Candidate Starts for Zonia_97:

(Start: 15 @67474 has 236 MA's), (18, 67435), (23, 67408), (Start: 41 @67282 has 2 MA's), (Start: 50 @67240 has 1 MA's), (64, 67114), (68, 67093), (72, 67081), (78, 67009), (88, 66895), (93, 66856), (95, 66838),