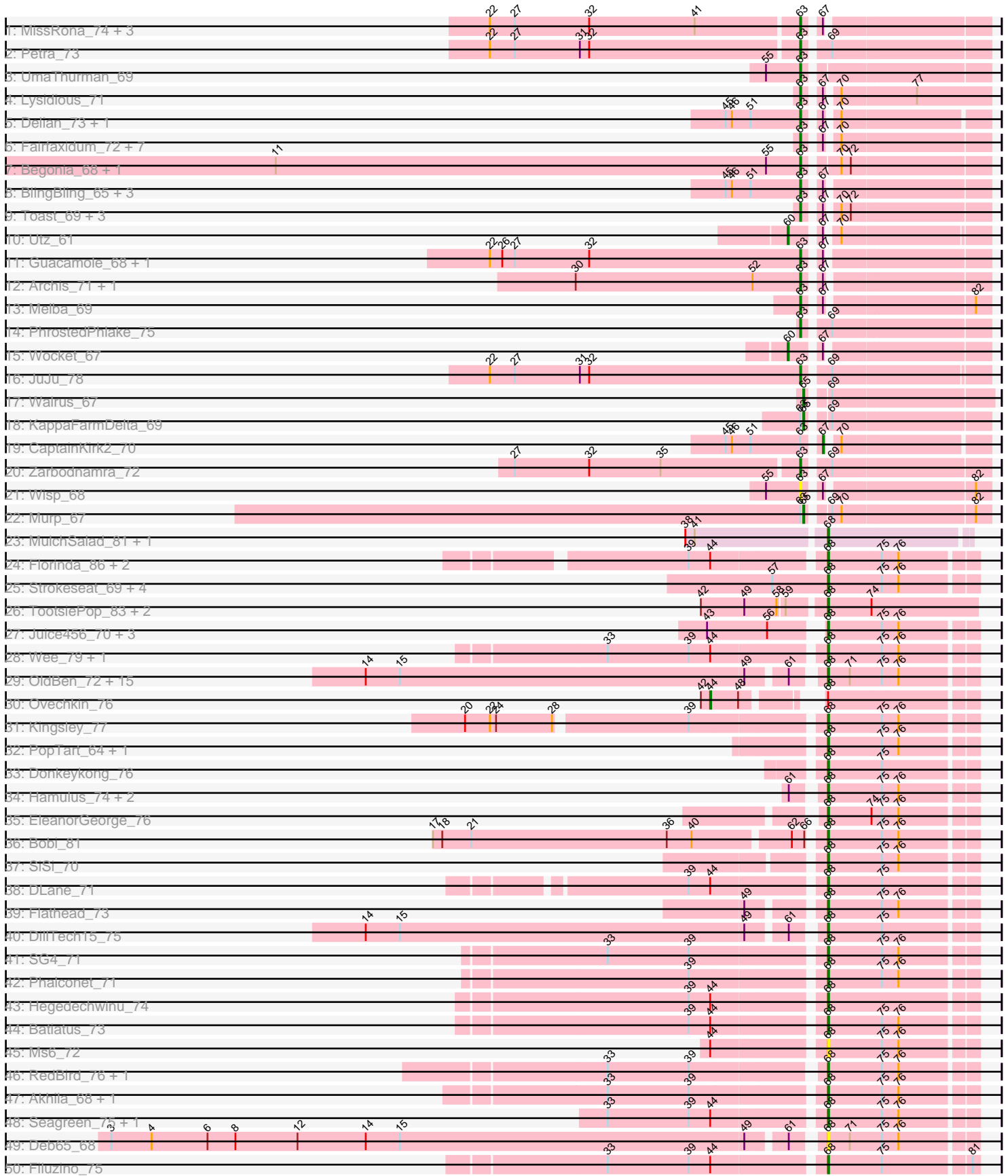
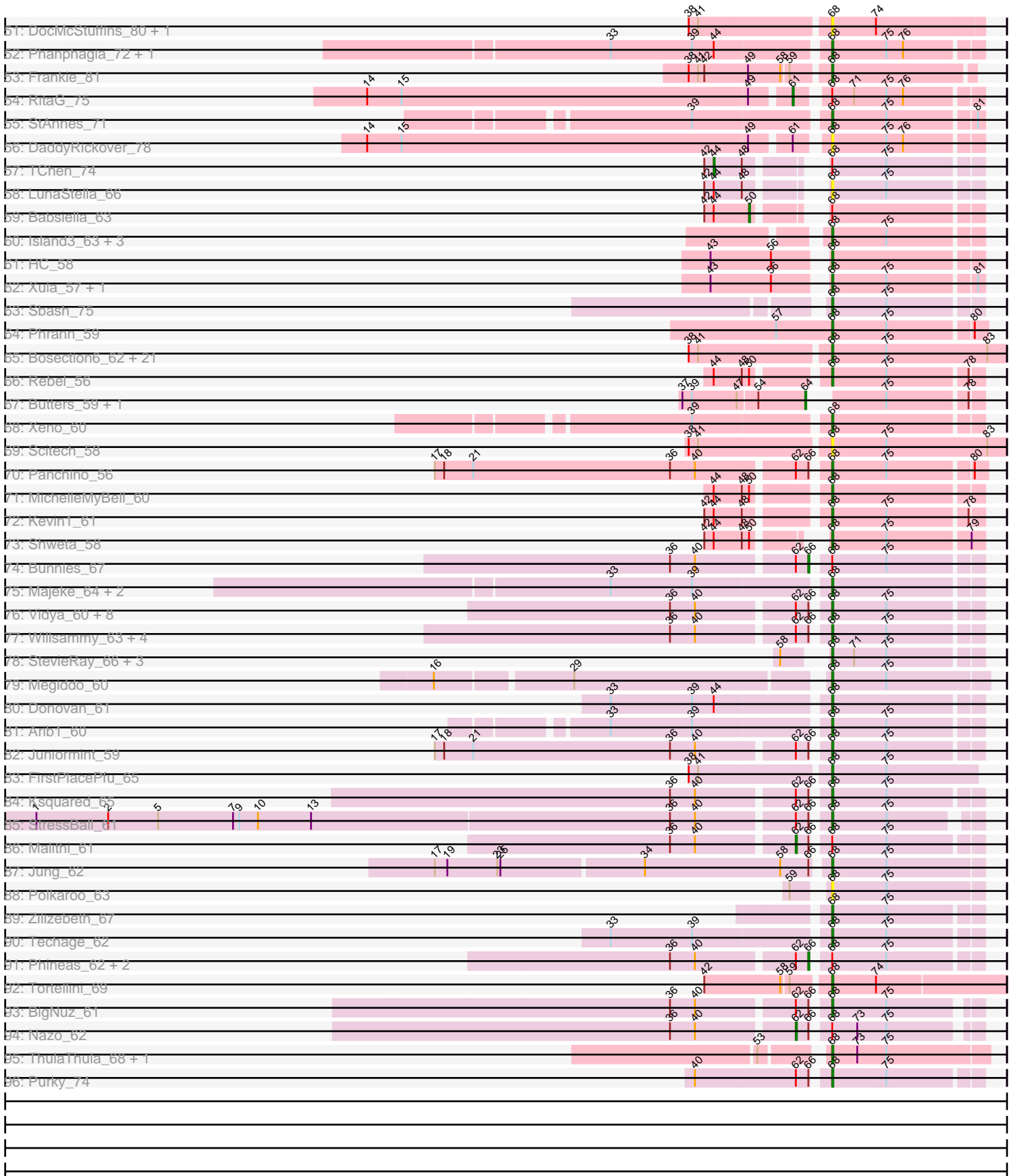


Pham 156121



Pham 156121



Note: Tracks are now grouped by subcluster and scaled. Switching in subcluster is indicated by changes in track color. Track scale is now set by default to display the region 30 bp upstream of start 1 to 30 bp downstream of the last possible start. If this default region is judged to be packed too tightly with annotated starts, the track will be further scaled to only show that region of the ORF with annotated starts. This action will be indicated by adding "Zoomed" to the title. For starts, yellow indicates the location of called starts comprised solely of Glimmer/GeneMark auto-annotations, green indicates the location of called starts with at least 1 manual gene annotation.

## Pham 156121 Report

This analysis was run 04/12/24 on database version 558.

Pham number 156121 has 198 members, 18 are drafts.

Phages represented in each track:

- Track 1 : MissRona\_74, Blueberry\_73, Gambino\_76, Azula\_74
- Track 2 : Petra\_73
- Track 3 : UmaThurman\_69
- Track 4 : Lysidious\_71
- Track 5 : Delian\_73, MintFen\_70
- Track 6 : Fairfaxidum\_72, Hitter\_69, Samba\_69, Blino\_71, Mellie\_66, Jalammah\_72, CarolAnn\_70, Fenry\_68
- Track 7 : Begonia\_68, Malachai\_68
- Track 8 : BlingBling\_65, Obliviate\_68, Barco\_66, Pipp\_73
- Track 9 : Toast\_69, PCoral7\_69, PrincePatrick\_70, William\_72
- Track 10 : Utz\_61
- Track 11 : Guacamole\_68, JasperJr\_68
- Track 12 : Archis\_71, ZiggyZoo\_70
- Track 13 : Melba\_69
- Track 14 : PhrostedPhlake\_75
- Track 15 : Wocket\_67
- Track 16 : JuJu\_78
- Track 17 : Walrus\_67
- Track 18 : KappaFarmDelta\_69
- Track 19 : CaptainKirk2\_70
- Track 20 : Zarbodnamra\_72
- Track 21 : Wisp\_68
- Track 22 : Murp\_67
- Track 23 : MulchSalad\_81, Piper2020\_87
- Track 24 : Florinda\_86, Quico\_83, Girafales\_83
- Track 25 : Strokeseat\_69, Minnie\_71, Sandalphon\_69, Hlubikazi\_69, Mandlovu\_69
- Track 26 : TootsiePop\_83, Misha28\_83, Awesomesauce\_84
- Track 27 : Juice456\_70, JalFarm20\_82, DeadP\_75, KristaRAM\_72
- Track 28 : Wee\_79, Taj\_80
- Track 29 : OldBen\_72, JoeyJr\_75, Ogoopogo\_79, Doomphist\_78, KingMidas\_74, PHappiness\_75, Poenanya\_78, Nimbo\_67, Geralt\_68, Daenerys\_74, Inventum\_73, Polka14\_79, Empress\_73, Leperchaun\_73, Scottish\_73, Sassafras\_76
- Track 30 : Ovechkin\_76
- Track 31 : Kingsley\_77
- Track 32 : PopTart\_64, SassyB\_64
- Track 33 : Donkeykong\_76
- Track 34 : Hamulus\_74, PhesterPhotato\_77, LittleShirley\_74

- Track 35 : EleanorGeorge\_76
- Track 36 : Bobi\_81
- Track 37 : SiSi\_70
- Track 38 : DLane\_71
- Track 39 : Flathead\_73
- Track 40 : DillTech15\_75
- Track 41 : SG4\_71
- Track 42 : Phalconet\_71
- Track 43 : Hegedechwinu\_74
- Track 44 : Batiatus\_73
- Track 45 : Ms6\_72
- Track 46 : RedBird\_76, Dorothy\_76
- Track 47 : Akhila\_68, MilanaBonita\_67
- Track 48 : Seagreen\_75, Bipolar\_77
- Track 49 : Deb65\_68
- Track 50 : Filuzino\_75
- Track 51 : DocMcStuffins\_80, ChickenDinner\_87
- Track 52 : Phanphagia\_72, Shauna1\_73
- Track 53 : Frankie\_81
- Track 54 : RitaG\_75
- Track 55 : StAnnes\_71
- Track 56 : DaddyRickover\_78
- Track 57 : TChen\_74
- Track 58 : LunaStella\_66
- Track 59 : Babsiella\_63
- Track 60 : Island3\_63, Che9c\_71, Brujita\_62, Xavia\_63
- Track 61 : HC\_58
- Track 62 : Xula\_57, QueenHazel\_58
- Track 63 : Sbash\_75
- Track 64 : Phrann\_59
- Track 65 : Bosection6\_62, Pipsqueaks\_64, SkinnyPete\_60, Carcharodon\_63, Magsby\_62, Chewbacca\_66, Schnauzer\_64, Philonius\_63, Fulbright\_61, Silvy\_64, Xerxes\_63, Parmesanjohn\_63, Gex\_64, Smurph\_63, Tapioca\_61, Duplicity\_61, Andies\_57, Charlie\_60, Melville\_68, Phloss\_61, Aggie\_59, Silvafighter\_65
- Track 66 : Rebel\_56
- Track 67 : Butters\_59, Rubeelu\_59
- Track 68 : Xeno\_60
- Track 69 : Scitech\_58
- Track 70 : Panchino\_56
- Track 71 : MichelleMyBell\_60
- Track 72 : Kevin1\_61
- Track 73 : Shweta\_58
- Track 74 : Bunnies\_67
- Track 75 : Majeke\_64, Phegasus\_64, Mangethe\_64
- Track 76 : Vidya\_60, Jebeks\_62, Bogie\_64, HUHilltop\_64, Camster\_62, Sonah\_62, Necropolis\_59, Shipwreck\_64, Dynamo\_61
- Track 77 : Willsammy\_63, CactusJack\_62, Glaske\_61, KilKor\_62, Phalm\_62
- Track 78 : StevieRay\_66, Atcoo\_63, Brusacoram\_63, Thespis\_63
- Track 79 : Megiddo\_60
- Track 80 : Donovan\_61
- Track 81 : Arib1\_60
- Track 82 : Juniormint\_59
- Track 83 : FirstPlacePfu\_65

- Track 84 : Ksquared\_65
- Track 85 : StressBall\_61
- Track 86 : Malithi\_61
- Track 87 : Jung\_62
- Track 88 : Polkaroo\_63
- Track 89 : Zilizebeth\_67
- Track 90 : Techage\_62
- Track 91 : Phineas\_62, GreaseLightnin\_66, Pygmy\_64
- Track 92 : Tortellini\_69
- Track 93 : BigNuz\_61
- Track 94 : Nazo\_62
- Track 95 : ThulaThula\_68, Phayonce\_64
- Track 96 : Purky\_74

***Summary of Final Annotations (See graph section above for start numbers):***

The start number called the most often in the published annotations is 68, it was called in 129 of the 180 non-draft genes in the pham.

Genes that call this "Most Annotated" start:

- Aggie\_59, Akhila\_68, Andies\_57, Arib1\_60, Atcoo\_63, Awesomesauce\_84, Batiatus\_73, BigNuz\_61, Bipolar\_77, Bobi\_81, Bogie\_64, Bosection6\_62, Brujita\_62, Brusacoram\_63, CactusJack\_62, Camster\_62, Carcharodon\_63, Charlie\_60, Che9c\_71, Chewbacca\_66, ChickenDinner\_87, DLane\_71, DaddyRickover\_78, Daenerys\_74, DeadP\_75, Deb65\_68, DillTech15\_75, DocMcStuffins\_80, Donkeykong\_76, Donovan\_61, Doomphist\_78, Dorothy\_76, Duplicity\_61, Dynamo\_61, EleanorGeorge\_76, Empress\_73, Filuzino\_75, FirstPlacePfu\_65, Flathead\_73, Florinda\_86, Frankie\_81, Fulbright\_61, Geralt\_68, Gex\_64, Girafales\_83, Glaske\_61, HC\_58, HUHilltop\_64, Hamulus\_74, Hegedechwinu\_74, Hlubikazi\_69, Inventum\_73, Island3\_63, JalFarm20\_82, Jebeks\_62, JoeyJr\_75, Juice456\_70, Jung\_62, Juniormint\_59, Kevin1\_61, KilKor\_62, KingMidas\_74, Kingsley\_77, KristaRAM\_72, Ksquared\_65, Leperchaun\_73, LittleShirley\_74, LunaStella\_66, Magsby\_62, Majeke\_64, Mandlovu\_69, Mangethe\_64, Megiddo\_60, Melville\_68, MichelleMyBell\_60, MilanaBonita\_67, Minnie\_71, Misha28\_83, Ms6\_72, MulchSalad\_81, Necropolis\_59, Nimbo\_67, Ogopogo\_79, OldBen\_72, PHappiness\_75, Panchino\_56, ParmesanJohn\_63, Phalconet\_71, Phalm\_62, Phanphagia\_72, Phayonce\_64, Phegasus\_64, PhesterPotato\_77, Philonius\_63, Phloss\_61, Phrann\_59, Piper2020\_87, Pipsqueaks\_64, Poenanya\_78, Polka14\_79, Polkaroo\_63, PopTart\_64, Purky\_74, QueenHazel\_58, Quico\_83, Rebel\_56, RedBird\_76, SG4\_71, Sandalphon\_69, Sassafras\_76, SassyB\_64, Sbash\_75, Schnauzer\_64, Scitech\_58, Scottish\_73, Seagreen\_75, Shauna1\_73, Shipwreck\_64, Shweta\_58, SiSi\_70, Silvafighter\_65, Silvy\_64, SkinnyPete\_60, Smurph\_63, Sonah\_62, StAnnes\_71, StevieRay\_66, StressBall\_61, Strokeseat\_69, Taj\_80, Tapioca\_61, Techage\_62, Thespis\_63, ThulaThula\_68, TootsiePop\_83, Tortellini\_69, Vidya\_60, Wee\_79, Willsammy\_63, Xavia\_63, Xeno\_60, Xerxes\_63, Xula\_57, Zilizebeth\_67,

Genes that have the "Most Annotated" start but do not call it:

- Babsiella\_63, Bunnies\_67, GreaseLightnin\_66, Malithi\_61, Nazo\_62, Ovechkin\_76, Phineas\_62, Pygmy\_64, RitaG\_75, TChen\_74,

Genes that do not have the "Most Annotated" start:

- Archis\_71, Azula\_74, Barco\_66, Begonia\_68, BlingBling\_65, Blino\_71, Blueberry\_73, Butters\_59, CaptainKirk2\_70, CarolAnn\_70, Delian\_73, Fairfaxidum\_72, Fenry\_68, Gambino\_76, Guacamole\_68, Hitter\_69, Jalammah\_72, JasperJr\_68, JuJu\_78, KappaFarmDelta\_69, Lysidious\_71, Malachai\_68, Melba\_69, Mellie\_66, MintFen\_70, MissRona\_74, Murp\_67, Obliviate\_68, PCoral7\_69, Petra\_73, PhrostedPhlake\_75, Pipp\_73, PrincePatrick\_70, Rubeelu\_59, Samba\_69, Toast\_69, UmaThurman\_69, Utz\_61, Walrus\_67, William\_72, Wisp\_68, Wocket\_67, Zarbodnamra\_72, ZiggyZoo\_70,

### Summary by start number:

Start 44:

- Found in 23 of 198 ( 11.6% ) of genes in pham
- Manual Annotations of this start: 2 of 180
- Called 8.7% of time when present
- Phage (with cluster) where this start called: Ovechkin\_76 (F1), TChen\_74 (F4),

Start 50:

- Found in 4 of 198 ( 2.0% ) of genes in pham
- Manual Annotations of this start: 1 of 180
- Called 25.0% of time when present
- Phage (with cluster) where this start called: Babsiella\_63 (I1),

Start 60:

- Found in 2 of 198 ( 1.0% ) of genes in pham
- Manual Annotations of this start: 2 of 180
- Called 100.0% of time when present
- Phage (with cluster) where this start called: Utz\_61 (CV), Wocket\_67 (CV),

Start 61:

- Found in 23 of 198 ( 11.6% ) of genes in pham
- Manual Annotations of this start: 1 of 180
- Called 4.3% of time when present
- Phage (with cluster) where this start called: RitaG\_75 (F1),

Start 62:

- Found in 27 of 198 ( 13.6% ) of genes in pham
- Manual Annotations of this start: 2 of 180
- Called 7.4% of time when present
- Phage (with cluster) where this start called: Malithi\_61 (P1), Nazo\_62 (P4),

Start 63:

- Found in 39 of 198 ( 19.7% ) of genes in pham
- Manual Annotations of this start: 34 of 180
- Called 92.3% of time when present
- Phage (with cluster) where this start called: Archis\_71 (CV), Azula\_74 (CV), Barco\_66 (CV), Begonia\_68 (CV), BlingBling\_65 (CV), Blino\_71 (CV), Blueberry\_73 (CV), CarolAnn\_70 (CV), Delian\_73 (CV), Fairfaxidum\_72 (CV), Fenry\_68 (CV), Gambino\_76 (CV), Guacamole\_68 (CV), Hitter\_69 (CV), Jalammah\_72 (CV), JasperJr\_68 (CV), JuJu\_78 (CV), Lysidious\_71 (CV), Malachai\_68 (CV), Melba\_69 (CV), Mellie\_66 (CV), MintFen\_70 (CV), MissRona\_74 (CV), Obliviate\_68 (CV),

PCoral7\_69 (CV), Petra\_73 (CV), PhrostedPhlake\_75 (CV), Pipp\_73 (CV), PrincePatrick\_70 (CV), Samba\_69 (CV), Toast\_69 (CV), UmaThurman\_69 (CV), William\_72 (CV), Wisp\_68 (CV), Zarbodnamra\_72 (CV), ZiggyZoo\_70 (CV),

Start 64:

- Found in 2 of 198 ( 1.0% ) of genes in pham
- Manual Annotations of this start: 2 of 180
- Called 100.0% of time when present
- Phage (with cluster) where this start called: Butters\_59 (N), Rubeelu\_59 (N),

Start 65:

- Found in 3 of 198 ( 1.5% ) of genes in pham
- Manual Annotations of this start: 3 of 180
- Called 100.0% of time when present
- Phage (with cluster) where this start called: KappaFarmDelta\_69 (CV), Murp\_67 (CV), Walrus\_67 (CV),

Start 66:

- Found in 28 of 198 ( 14.1% ) of genes in pham
- Manual Annotations of this start: 3 of 180
- Called 14.3% of time when present
- Phage (with cluster) where this start called: Bunnies\_67 (P1), GreaseLightnin\_66 (P1), Phineas\_62 (P1), Pygmy\_64 (P1),

Start 67:

- Found in 32 of 198 ( 16.2% ) of genes in pham
- Manual Annotations of this start: 1 of 180
- Called 3.1% of time when present
- Phage (with cluster) where this start called: CaptainKirk2\_70 (CV),

Start 68:

- Found in 154 of 198 ( 77.8% ) of genes in pham
- Manual Annotations of this start: 129 of 180
- Called 93.5% of time when present
- Phage (with cluster) where this start called: Aggie\_59 (N), Akhila\_68 (F1), Andies\_57 (N), Arib1\_60 (P1), Atcoo\_63 (P1), Awesomesauce\_84 (F1), Batiatus\_73 (F1), BigNuz\_61 (P4), Bipolar\_77 (F1), Bobi\_81 (F1), Bogie\_64 (P1), Bosection6\_62 (N), Brujita\_62 (I1), Brusacoram\_63 (P1), CactusJack\_62 (P1), Camster\_62 (P1), Carcharodon\_63 (N), Charlie\_60 (N), Che9c\_71 (I2), Chewbacca\_66 (N), ChickenDinner\_87 (F1), DLane\_71 (F1), DaddyRickover\_78 (F1), Daenerys\_74 (F1), DeadP\_75 (F1), Deb65\_68 (F1), DillTech15\_75 (F1), DocMcStuffins\_80 (F1), Donkeykong\_76 (F1), Donovan\_61 (P1), Doomphist\_78 (F1), Dorothy\_76 (F1), Duplicity\_61 (N), Dynamo\_61 (P1), EleanorGeorge\_76 (F1), Empress\_73 (F1), Filuzino\_75 (F1), FirstPlacePfu\_65 (P1), Flathead\_73 (F1), Florinda\_86 (F1), Frankie\_81 (F1), Fulbright\_61 (N), Geralt\_68 (F1), Gex\_64 (N), Girafales\_83 (F1), Glaske\_61 (P1), HC\_58 (I1), HUHilltop\_64 (P1), Hamulus\_74 (F1), Hegedechwinu\_74 (F1), Hlubikazi\_69 (F1), Inventum\_73 (F1), Island3\_63 (I1), JalFarm20\_82 (F1), Jebeks\_62 (P1), JoeyJr\_75 (F1), Juice456\_70 (F1), Jung\_62 (P1), Juniormint\_59 (P1), Kevin1\_61 (N), KilKor\_62 (P1), KingMidas\_74 (F1), Kingsley\_77 (F1), KristaRAM\_72 (F1), Ksquared\_65 (P1), Leperchaun\_73 (F1), LittleShirley\_74 (F1), LunaStella\_66 (F4), Magsby\_62 (N), Majeke\_64 (P1), Mandlovu\_69 (F1), Mangethe\_64 (P1), Megiddo\_60 (P1), Melville\_68 (N), MichelleMyBell\_60 (N), MilanaBonita\_67 (F1), Minnie\_71 (F1), Misha28\_83 (F1),

Ms6\_72 (F1), MulchSalad\_81 (F), Necropolis\_59 (P1), Nimbo\_67 (F1), Ogopogo\_79 (F1), OldBen\_72 (F1), PHappiness\_75 (F1), Panchino\_56 (N), Parmesanjohn\_63 (N), Phalconet\_71 (F1), Phalm\_62 (P1), Phanphagia\_72 (F1), Phayonce\_64 (P5), Phegasus\_64 (P1), PhesterPotato\_77 (F1), Philonius\_63 (N), Phloss\_61 (N), Phrann\_59 (N), Piper2020\_87 (F1), Pipsqueaks\_64 (N), Poenanya\_78 (F1), Polka14\_79 (F1), Polkaroo\_63 (P1), PopTart\_64 (F1), Purky\_74 (P6), QueenHazel\_58 (I1), Quico\_83 (F1), Rebel\_56 (N), RedBird\_76 (F1), SG4\_71 (F1), Sandalphon\_69 (F1), Sassafras\_76 (F1), SassyB\_64 (F1), Sbash\_75 (I2), Schnauzer\_64 (N), Scitech\_58 (N), Scottish\_73 (F1), Seagreen\_75 (F1), Shauna1\_73 (F1), Shipwreck\_64 (P1), Shweta\_58 (N), SiSi\_70 (F1), Silvafighter\_65 (N), Silvy\_64 (N), SkinnyPete\_60 (N), Smurph\_63 (N), Sonah\_62 (P1), StAnnes\_71 (F1), StevieRay\_66 (P1), StressBall\_61 (P1), Strokeseat\_69 (F1), Taj\_80 (F1), Tapioca\_61 (N), Techage\_62 (P1), Thespis\_63 (P1), ThulaThula\_68 (P5), TootsiePop\_83 (F1), Tortellini\_69 (P2), Vidya\_60 (P1), Wee\_79 (F1), Willsammy\_63 (P1), Xavia\_63 (P3), Xeno\_60 (N), Xerxes\_63 (N), Xula\_57 (I1), Zilizebeth\_67 (P1),

### Summary by clusters:

There are 13 clusters represented in this pham: P2, F1, P1, P6, P4, F, I1, P3, I2, N, F4, CV, P5,

Info for manual annotations of cluster CV:

- Start number 60 was manually annotated 2 times for cluster CV.
- Start number 63 was manually annotated 34 times for cluster CV.
- Start number 65 was manually annotated 3 times for cluster CV.
- Start number 67 was manually annotated 1 time for cluster CV.

Info for manual annotations of cluster F1:

- Start number 44 was manually annotated 1 time for cluster F1.
- Start number 61 was manually annotated 1 time for cluster F1.
- Start number 68 was manually annotated 60 times for cluster F1.

Info for manual annotations of cluster F4:

- Start number 44 was manually annotated 1 time for cluster F4.

Info for manual annotations of cluster I1:

- Start number 50 was manually annotated 1 time for cluster I1.
- Start number 68 was manually annotated 5 times for cluster I1.

Info for manual annotations of cluster I2:

- Start number 68 was manually annotated 2 times for cluster I2.

Info for manual annotations of cluster N:

- Start number 64 was manually annotated 2 times for cluster N.
- Start number 68 was manually annotated 26 times for cluster N.

Info for manual annotations of cluster P1:

- Start number 62 was manually annotated 1 time for cluster P1.
- Start number 66 was manually annotated 3 times for cluster P1.
- Start number 68 was manually annotated 30 times for cluster P1.

Info for manual annotations of cluster P2:



- Start number 68 was manually annotated 1 time for cluster P2.

Info for manual annotations of cluster P3:

- Start number 68 was manually annotated 1 time for cluster P3.

Info for manual annotations of cluster P4:

- Start number 62 was manually annotated 1 time for cluster P4.
- Start number 68 was manually annotated 1 time for cluster P4.

Info for manual annotations of cluster P5:

- Start number 68 was manually annotated 2 times for cluster P5.

Info for manual annotations of cluster P6:

- Start number 68 was manually annotated 1 time for cluster P6.

### ***Gene Information:***

Gene: Aggie\_59 Start: 39996, Stop: 40157, Start Num: 68

Candidate Starts for Aggie\_59:

(38, 39867), (41, 39876), (Start: 68 @39996 has 129 MA's), (75, 40047), (83, 40140),

Gene: Akhila\_68 Start: 45011, Stop: 45145, Start Num: 68

Candidate Starts for Akhila\_68:

(33, 44813), (39, 44891), (Start: 68 @45011 has 129 MA's), (75, 45062), (76, 45077),

Gene: Andies\_57 Start: 39441, Stop: 39602, Start Num: 68

Candidate Starts for Andies\_57:

(38, 39312), (41, 39321), (Start: 68 @39441 has 129 MA's), (75, 39492), (83, 39585),

Gene: Archis\_71 Start: 42723, Stop: 42881, Start Num: 63

Candidate Starts for Archis\_71:

(30, 42507), (52, 42678), (Start: 63 @42723 has 34 MA's), (Start: 67 @42735 has 1 MA's),

Gene: Arib1\_60 Start: 39157, Stop: 39291, Start Num: 68

Candidate Starts for Arib1\_60:

(33, 38959), (39, 39037), (Start: 68 @39157 has 129 MA's), (75, 39208),

Gene: Atcoo\_63 Start: 42534, Stop: 42668, Start Num: 68

Candidate Starts for Atcoo\_63:

(58, 42510), (Start: 68 @42534 has 129 MA's), (71, 42555), (75, 42585),

Gene: Awesomesauce\_84 Start: 50622, Stop: 50762, Start Num: 68

Candidate Starts for Awesomesauce\_84:

(42, 50511), (49, 50553), (58, 50583), (59, 50589), (Start: 68 @50622 has 129 MA's), (74, 50664),

Gene: Azula\_74 Start: 46615, Stop: 46773, Start Num: 63

Candidate Starts for Azula\_74:

(22, 46321), (27, 46345), (32, 46417), (41, 46519), (Start: 63 @46615 has 34 MA's), (Start: 67 @46627 has 1 MA's),

Gene: Babsiella\_63 Start: 40488, Stop: 40664, Start Num: 50

Candidate Starts for Babsiella\_63:

(42, 40446), (Start: 44 @40455 has 2 MA's), (Start: 50 @40488 has 1 MA's), (Start: 68 @40530 has 129 MA's),

Gene: Barco\_66 Start: 42553, Stop: 42711, Start Num: 63

Candidate Starts for Barco\_66:

(45, 42481), (46, 42487), (51, 42505), (Start: 63 @42553 has 34 MA's), (Start: 67 @42565 has 1 MA's),

Gene: Batiatus\_73 Start: 46749, Stop: 46883, Start Num: 68

Candidate Starts for Batiatus\_73:

(39, 46629), (Start: 44 @46650 has 2 MA's), (Start: 68 @46749 has 129 MA's), (75, 46800), (76, 46815),

Gene: Begonia\_68 Start: 45480, Stop: 45644, Start Num: 63

Candidate Starts for Begonia\_68:

(11, 44973), (55, 45447), (Start: 63 @45480 has 34 MA's), (70, 45507), (72, 45516),

Gene: BigNuz\_61 Start: 40925, Stop: 41053, Start Num: 68

Candidate Starts for BigNuz\_61:

(36, 40790), (40, 40814), (Start: 62 @40901 has 2 MA's), (Start: 66 @40913 has 3 MA's), (Start: 68 @40925 has 129 MA's), (75, 40976),

Gene: Bipolar\_77 Start: 48393, Stop: 48527, Start Num: 68

Candidate Starts for Bipolar\_77:

(33, 48195), (39, 48273), (Start: 44 @48294 has 2 MA's), (Start: 68 @48393 has 129 MA's), (75, 48444), (76, 48459),

Gene: BlingBling\_65 Start: 43435, Stop: 43593, Start Num: 63

Candidate Starts for BlingBling\_65:

(45, 43363), (46, 43369), (51, 43387), (Start: 63 @43435 has 34 MA's), (Start: 67 @43447 has 1 MA's),

Gene: Blino\_71 Start: 48216, Stop: 48371, Start Num: 63

Candidate Starts for Blino\_71:

(Start: 63 @48216 has 34 MA's), (Start: 67 @48228 has 1 MA's), (70, 48237),

Gene: Blueberry\_73 Start: 46615, Stop: 46773, Start Num: 63

Candidate Starts for Blueberry\_73:

(22, 46321), (27, 46345), (32, 46417), (41, 46519), (Start: 63 @46615 has 34 MA's), (Start: 67 @46627 has 1 MA's),

Gene: Bobi\_81 Start: 49048, Stop: 49182, Start Num: 68

Candidate Starts for Bobi\_81:

(17, 48688), (18, 48697), (21, 48724), (36, 48913), (40, 48937), (Start: 62 @49024 has 2 MA's), (Start: 66 @49036 has 3 MA's), (Start: 68 @49048 has 129 MA's), (75, 49099), (76, 49114),

Gene: Bogie\_64 Start: 41516, Stop: 41650, Start Num: 68

Candidate Starts for Bogie\_64:

(36, 41381), (40, 41405), (Start: 62 @41492 has 2 MA's), (Start: 66 @41504 has 3 MA's), (Start: 68 @41516 has 129 MA's), (75, 41567),

Gene: Bosection6\_62 Start: 39045, Stop: 39206, Start Num: 68

Candidate Starts for Bosection6\_62:  
(38, 38916), (41, 38925), (Start: 68 @39045 has 129 MA's), (75, 39096), (83, 39189),

Gene: Brujita\_62 Start: 40659, Stop: 40793, Start Num: 68  
Candidate Starts for Brujita\_62:  
(Start: 68 @40659 has 129 MA's), (75, 40710),

Gene: Brusacoram\_63 Start: 41077, Stop: 41211, Start Num: 68  
Candidate Starts for Brusacoram\_63:  
(58, 41053), (Start: 68 @41077 has 129 MA's), (71, 41098), (75, 41128),

Gene: Bunnies\_67 Start: 42398, Stop: 42544, Start Num: 66  
Candidate Starts for Bunnies\_67:  
(36, 42275), (40, 42299), (Start: 62 @42386 has 2 MA's), (Start: 66 @42398 has 3 MA's), (Start: 68 @42410 has 129 MA's), (75, 42461),

Gene: Butters\_59 Start: 37429, Stop: 37563, Start Num: 64  
Candidate Starts for Butters\_59:  
(37, 37315), (39, 37324), (47, 37366), (54, 37384), (Start: 64 @37429 has 2 MA's), (75, 37480), (78, 37552),

Gene: CactusJack\_62 Start: 41278, Stop: 41412, Start Num: 68  
Candidate Starts for CactusJack\_62:  
(36, 41143), (40, 41167), (Start: 62 @41254 has 2 MA's), (Start: 66 @41266 has 3 MA's), (Start: 68 @41278 has 129 MA's), (75, 41329),

Gene: Camster\_62 Start: 39977, Stop: 40111, Start Num: 68  
Candidate Starts for Camster\_62:  
(36, 39842), (40, 39866), (Start: 62 @39953 has 2 MA's), (Start: 66 @39965 has 3 MA's), (Start: 68 @39977 has 129 MA's), (75, 40028),

Gene: CaptainKirk2\_70 Start: 42213, Stop: 42356, Start Num: 67  
Candidate Starts for CaptainKirk2\_70:  
(45, 42129), (46, 42135), (51, 42153), (Start: 63 @42201 has 34 MA's), (Start: 67 @42213 has 1 MA's), (70, 42222),

Gene: Carcharodon\_63 Start: 39343, Stop: 39504, Start Num: 68  
Candidate Starts for Carcharodon\_63:  
(38, 39214), (41, 39223), (Start: 68 @39343 has 129 MA's), (75, 39394), (83, 39487),

Gene: CarolAnn\_70 Start: 48215, Stop: 48370, Start Num: 63  
Candidate Starts for CarolAnn\_70:  
(Start: 63 @48215 has 34 MA's), (Start: 67 @48227 has 1 MA's), (70, 48236),

Gene: Charlie\_60 Start: 38669, Stop: 38830, Start Num: 68  
Candidate Starts for Charlie\_60:  
(38, 38540), (41, 38549), (Start: 68 @38669 has 129 MA's), (75, 38720), (83, 38813),

Gene: Che9c\_71 Start: 50371, Stop: 50505, Start Num: 68  
Candidate Starts for Che9c\_71:  
(Start: 68 @50371 has 129 MA's), (75, 50422),

Gene: Chewbacca\_66 Start: 39238, Stop: 39399, Start Num: 68

Candidate Starts for Chewbacca\_66:  
(38, 39109), (41, 39118), (Start: 68 @39238 has 129 MA's), (75, 39289), (83, 39382),

Gene: ChickenDinner\_87 Start: 50386, Stop: 50526, Start Num: 68  
Candidate Starts for ChickenDinner\_87:  
(38, 50257), (41, 50266), (Start: 68 @50386 has 129 MA's), (74, 50428),

Gene: DLane\_71 Start: 46327, Stop: 46461, Start Num: 68  
Candidate Starts for DLane\_71:  
(39, 46207), (Start: 44 @46228 has 2 MA's), (Start: 68 @46327 has 129 MA's), (75, 46378),

Gene: DaddyRickover\_78 Start: 48359, Stop: 48493, Start Num: 68  
Candidate Starts for DaddyRickover\_78:  
(14, 47939), (15, 47972), (49, 48302), (Start: 61 @48335 has 1 MA's), (Start: 68 @48359 has 129 MA's), (75, 48410), (76, 48425),

Gene: Daenerys\_74 Start: 47956, Stop: 48090, Start Num: 68  
Candidate Starts for Daenerys\_74:  
(14, 47536), (15, 47569), (49, 47899), (Start: 61 @47932 has 1 MA's), (Start: 68 @47956 has 129 MA's), (71, 47977), (75, 48007), (76, 48022),

Gene: DeadP\_75 Start: 45575, Stop: 45709, Start Num: 68  
Candidate Starts for DeadP\_75:  
(43, 45479), (56, 45536), (Start: 68 @45575 has 129 MA's), (75, 45626), (76, 45641),

Gene: Deb65\_68 Start: 45678, Stop: 45812, Start Num: 68  
Candidate Starts for Deb65\_68:  
(3, 45012), (4, 45051), (6, 45105), (8, 45132), (12, 45192), (14, 45258), (15, 45291), (49, 45621), (Start: 61 @45654 has 1 MA's), (Start: 68 @45678 has 129 MA's), (71, 45699), (75, 45729), (76, 45744),

Gene: Delian\_73 Start: 42199, Stop: 42354, Start Num: 63  
Candidate Starts for Delian\_73:  
(45, 42127), (46, 42133), (51, 42151), (Start: 63 @42199 has 34 MA's), (Start: 67 @42211 has 1 MA's), (70, 42220),

Gene: DillTech15\_75 Start: 45272, Stop: 45406, Start Num: 68  
Candidate Starts for DillTech15\_75:  
(14, 44852), (15, 44885), (49, 45215), (Start: 61 @45248 has 1 MA's), (Start: 68 @45272 has 129 MA's), (75, 45323),

Gene: DocMcStuffins\_80 Start: 52016, Stop: 52156, Start Num: 68  
Candidate Starts for DocMcStuffins\_80:  
(38, 51887), (41, 51896), (Start: 68 @52016 has 129 MA's), (74, 52058),

Gene: Donkeykong\_76 Start: 47467, Stop: 47601, Start Num: 68  
Candidate Starts for Donkeykong\_76:  
(Start: 68 @47467 has 129 MA's), (75, 47518),

Gene: Donovan\_61 Start: 40222, Stop: 40356, Start Num: 68  
Candidate Starts for Donovan\_61:  
(33, 40024), (39, 40102), (Start: 44 @40123 has 2 MA's), (Start: 68 @40222 has 129 MA's),

Gene: Doomphist\_78 Start: 47769, Stop: 47903, Start Num: 68

Candidate Starts for Doomphist\_78:

(14, 47349), (15, 47382), (49, 47712), (Start: 61 @47745 has 1 MA's), (Start: 68 @47769 has 129 MA's), (71, 47790), (75, 47820), (76, 47835),

Gene: Dorothy\_76 Start: 48407, Stop: 48541, Start Num: 68

Candidate Starts for Dorothy\_76:

(33, 48212), (39, 48290), (Start: 68 @48407 has 129 MA's), (75, 48458), (76, 48473),

Gene: Duplicity\_61 Start: 38600, Stop: 38761, Start Num: 68

Candidate Starts for Duplicity\_61:

(38, 38471), (41, 38480), (Start: 68 @38600 has 129 MA's), (75, 38651), (83, 38744),

Gene: Dynamo\_61 Start: 39550, Stop: 39684, Start Num: 68

Candidate Starts for Dynamo\_61:

(36, 39415), (40, 39439), (Start: 62 @39526 has 2 MA's), (Start: 66 @39538 has 3 MA's), (Start: 68 @39550 has 129 MA's), (75, 39601),

Gene: EleanorGeorge\_76 Start: 47362, Stop: 47496, Start Num: 68

Candidate Starts for EleanorGeorge\_76:

(Start: 68 @47362 has 129 MA's), (74, 47404), (75, 47413), (76, 47428),

Gene: Empress\_73 Start: 46580, Stop: 46714, Start Num: 68

Candidate Starts for Empress\_73:

(14, 46160), (15, 46193), (49, 46523), (Start: 61 @46556 has 1 MA's), (Start: 68 @46580 has 129 MA's), (71, 46601), (75, 46631), (76, 46646),

Gene: Fairfaxidum\_72 Start: 44764, Stop: 44922, Start Num: 63

Candidate Starts for Fairfaxidum\_72:

(Start: 63 @44764 has 34 MA's), (Start: 67 @44776 has 1 MA's), (70, 44785),

Gene: Fenry\_68 Start: 44226, Stop: 44384, Start Num: 63

Candidate Starts for Fenry\_68:

(Start: 63 @44226 has 34 MA's), (Start: 67 @44238 has 1 MA's), (70, 44247),

Gene: Filuzino\_75 Start: 48306, Stop: 48440, Start Num: 68

Candidate Starts for Filuzino\_75:

(33, 48108), (39, 48186), (Start: 44 @48207 has 2 MA's), (Start: 68 @48306 has 129 MA's), (75, 48357), (81, 48435),

Gene: FirstPlacePfu\_65 Start: 39143, Stop: 39277, Start Num: 68

Candidate Starts for FirstPlacePfu\_65:

(38, 39014), (41, 39023), (Start: 68 @39143 has 129 MA's), (75, 39194),

Gene: Flathead\_73 Start: 46020, Stop: 46154, Start Num: 68

Candidate Starts for Flathead\_73:

(49, 45960), (Start: 68 @46020 has 129 MA's), (75, 46071), (76, 46086),

Gene: Florinda\_86 Start: 49222, Stop: 49356, Start Num: 68

Candidate Starts for Florinda\_86:

(39, 49102), (Start: 44 @49123 has 2 MA's), (Start: 68 @49222 has 129 MA's), (75, 49273), (76, 49288),

Gene: Frankie\_81 Start: 47698, Stop: 47826, Start Num: 68  
Candidate Starts for Frankie\_81:  
(38, 47572), (41, 47581), (42, 47587), (49, 47629), (58, 47659), (59, 47665), (Start: 68 @47698 has 129 MA's),

Gene: Fulbright\_61 Start: 38037, Stop: 38198, Start Num: 68  
Candidate Starts for Fulbright\_61:  
(38, 37908), (41, 37917), (Start: 68 @38037 has 129 MA's), (75, 38088), (83, 38181),

Gene: Gambino\_76 Start: 46615, Stop: 46773, Start Num: 63  
Candidate Starts for Gambino\_76:  
(22, 46321), (27, 46345), (32, 46417), (41, 46519), (Start: 63 @46615 has 34 MA's), (Start: 67 @46627 has 1 MA's),

Gene: Geralt\_68 Start: 45676, Stop: 45810, Start Num: 68  
Candidate Starts for Geralt\_68:  
(14, 45256), (15, 45289), (49, 45619), (Start: 61 @45652 has 1 MA's), (Start: 68 @45676 has 129 MA's), (71, 45697), (75, 45727), (76, 45742),

Gene: Gex\_64 Start: 39359, Stop: 39520, Start Num: 68  
Candidate Starts for Gex\_64:  
(38, 39230), (41, 39239), (Start: 68 @39359 has 129 MA's), (75, 39410), (83, 39503),

Gene: Girafales\_83 Start: 48827, Stop: 48961, Start Num: 68  
Candidate Starts for Girafales\_83:  
(39, 48707), (Start: 44 @48728 has 2 MA's), (Start: 68 @48827 has 129 MA's), (75, 48878), (76, 48893),

Gene: Glaske\_61 Start: 41278, Stop: 41412, Start Num: 68  
Candidate Starts for Glaske\_61:  
(36, 41143), (40, 41167), (Start: 62 @41254 has 2 MA's), (Start: 66 @41266 has 3 MA's), (Start: 68 @41278 has 129 MA's), (75, 41329),

Gene: GreaseLightnin\_66 Start: 41919, Stop: 42065, Start Num: 66  
Candidate Starts for GreaseLightnin\_66:  
(36, 41796), (40, 41820), (Start: 62 @41907 has 2 MA's), (Start: 66 @41919 has 3 MA's), (Start: 68 @41931 has 129 MA's), (75, 41982),

Gene: Guacamole\_68 Start: 43616, Stop: 43774, Start Num: 63  
Candidate Starts for Guacamole\_68:  
(22, 43316), (26, 43328), (27, 43340), (32, 43412), (Start: 63 @43616 has 34 MA's), (Start: 67 @43628 has 1 MA's),

Gene: HC\_58 Start: 38076, Stop: 38210, Start Num: 68  
Candidate Starts for HC\_58:  
(43, 37980), (56, 38037), (Start: 68 @38076 has 129 MA's),

Gene: HUHilltop\_64 Start: 39773, Stop: 39907, Start Num: 68  
Candidate Starts for HUHilltop\_64:  
(36, 39638), (40, 39662), (Start: 62 @39749 has 2 MA's), (Start: 66 @39761 has 3 MA's), (Start: 68 @39773 has 129 MA's), (75, 39824),

Gene: Hamulus\_74 Start: 46705, Stop: 46839, Start Num: 68

Candidate Starts for Hamulus\_74:

(Start: 61 @46681 has 1 MA's), (Start: 68 @46705 has 129 MA's), (75, 46756), (76, 46771),

Gene: Hegedechwinu\_74 Start: 44915, Stop: 45049, Start Num: 68

Candidate Starts for Hegedechwinu\_74:

(39, 44795), (Start: 44 @44816 has 2 MA's), (Start: 68 @44915 has 129 MA's),

Gene: Hitter\_69 Start: 42159, Stop: 42317, Start Num: 63

Candidate Starts for Hitter\_69:

(Start: 63 @42159 has 34 MA's), (Start: 67 @42171 has 1 MA's), (70, 42180),

Gene: Hlubikazi\_69 Start: 44290, Stop: 44424, Start Num: 68

Candidate Starts for Hlubikazi\_69:

(57, 44236), (Start: 68 @44290 has 129 MA's), (75, 44341), (76, 44356),

Gene: Inventum\_73 Start: 46592, Stop: 46726, Start Num: 68

Candidate Starts for Inventum\_73:

(14, 46172), (15, 46205), (49, 46535), (Start: 61 @46568 has 1 MA's), (Start: 68 @46592 has 129 MA's), (71, 46613), (75, 46643), (76, 46658),

Gene: Island3\_63 Start: 40659, Stop: 40793, Start Num: 68

Candidate Starts for Island3\_63:

(Start: 68 @40659 has 129 MA's), (75, 40710),

Gene: JalFarm20\_82 Start: 47370, Stop: 47504, Start Num: 68

Candidate Starts for JalFarm20\_82:

(43, 47274), (56, 47331), (Start: 68 @47370 has 129 MA's), (75, 47421), (76, 47436),

Gene: Jalammah\_72 Start: 45129, Stop: 45290, Start Num: 63

Candidate Starts for Jalammah\_72:

(Start: 63 @45129 has 34 MA's), (Start: 67 @45141 has 1 MA's), (70, 45150),

Gene: JasperJr\_68 Start: 43616, Stop: 43774, Start Num: 63

Candidate Starts for JasperJr\_68:

(22, 43316), (26, 43328), (27, 43340), (32, 43412), (Start: 63 @43616 has 34 MA's), (Start: 67 @43628 has 1 MA's),

Gene: Jebeks\_62 Start: 39070, Stop: 39204, Start Num: 68

Candidate Starts for Jebeks\_62:

(36, 38935), (40, 38959), (Start: 62 @39046 has 2 MA's), (Start: 66 @39058 has 3 MA's), (Start: 68 @39070 has 129 MA's), (75, 39121),

Gene: JoeyJr\_75 Start: 47581, Stop: 47715, Start Num: 68

Candidate Starts for JoeyJr\_75:

(14, 47161), (15, 47194), (49, 47524), (Start: 61 @47557 has 1 MA's), (Start: 68 @47581 has 129 MA's), (71, 47602), (75, 47632), (76, 47647),

Gene: JuJu\_78 Start: 48352, Stop: 48516, Start Num: 63

Candidate Starts for JuJu\_78:

(22, 48052), (27, 48076), (31, 48139), (32, 48148), (Start: 63 @48352 has 34 MA's), (69, 48373),

Gene: Juice456\_70 Start: 45326, Stop: 45460, Start Num: 68

Candidate Starts for Juice456\_70:

(43, 45230), (56, 45287), (Start: 68 @45326 has 129 MA's), (75, 45377), (76, 45392),

Gene: Jung\_62 Start: 40067, Stop: 40207, Start Num: 68

Candidate Starts for Jung\_62:

(17, 39704), (19, 39716), (23, 39764), (25, 39767), (34, 39899), (58, 40028), (Start: 66 @40055 has 3 MA's), (Start: 68 @40067 has 129 MA's), (75, 40118),

Gene: Juniormint\_59 Start: 38526, Stop: 38660, Start Num: 68

Candidate Starts for Juniormint\_59:

(17, 38166), (18, 38175), (21, 38202), (36, 38391), (40, 38415), (Start: 62 @38502 has 2 MA's), (Start: 66 @38514 has 3 MA's), (Start: 68 @38526 has 129 MA's), (75, 38577),

Gene: KappaFarmDelta\_69 Start: 43192, Stop: 43353, Start Num: 65

Candidate Starts for KappaFarmDelta\_69:

(Start: 63 @43189 has 34 MA's), (Start: 65 @43192 has 3 MA's), (69, 43207),

Gene: Kevin1\_61 Start: 37537, Stop: 37671, Start Num: 68

Candidate Starts for Kevin1\_61:

(42, 37435), (Start: 44 @37444 has 2 MA's), (48, 37471), (Start: 68 @37537 has 129 MA's), (75, 37588), (78, 37660),

Gene: KilKor\_62 Start: 41971, Stop: 42105, Start Num: 68

Candidate Starts for KilKor\_62:

(36, 41836), (40, 41860), (Start: 62 @41947 has 2 MA's), (Start: 66 @41959 has 3 MA's), (Start: 68 @41971 has 129 MA's), (75, 42022),

Gene: KingMidas\_74 Start: 46995, Stop: 47129, Start Num: 68

Candidate Starts for KingMidas\_74:

(14, 46575), (15, 46608), (49, 46938), (Start: 61 @46971 has 1 MA's), (Start: 68 @46995 has 129 MA's), (71, 47016), (75, 47046), (76, 47061),

Gene: Kingsley\_77 Start: 48832, Stop: 48966, Start Num: 68

Candidate Starts for Kingsley\_77:

(20, 48508), (22, 48532), (24, 48538), (28, 48592), (39, 48712), (Start: 68 @48832 has 129 MA's), (75, 48883), (76, 48898),

Gene: KristaRAM\_72 Start: 45695, Stop: 45829, Start Num: 68

Candidate Starts for KristaRAM\_72:

(43, 45599), (56, 45656), (Start: 68 @45695 has 129 MA's), (75, 45746), (76, 45761),

Gene: Ksquared\_65 Start: 42287, Stop: 42421, Start Num: 68

Candidate Starts for Ksquared\_65:

(36, 42152), (40, 42176), (Start: 62 @42263 has 2 MA's), (Start: 66 @42275 has 3 MA's), (Start: 68 @42287 has 129 MA's), (75, 42338),

Gene: Leperchaun\_73 Start: 46815, Stop: 46949, Start Num: 68

Candidate Starts for Leperchaun\_73:

(14, 46395), (15, 46428), (49, 46758), (Start: 61 @46791 has 1 MA's), (Start: 68 @46815 has 129 MA's), (71, 46836), (75, 46866), (76, 46881),

Gene: LittleShirley\_74 Start: 45751, Stop: 45885, Start Num: 68

Candidate Starts for LittleShirley\_74:

(Start: 61 @45727 has 1 MA's), (Start: 68 @45751 has 129 MA's), (75, 45802), (76, 45817),



Gene: LunaStella\_66 Start: 45879, Stop: 46013, Start Num: 68  
Candidate Starts for LunaStella\_66:  
(42, 45795), (Start: 44 @45804 has 2 MA's), (48, 45831), (Start: 68 @45879 has 129 MA's), (75, 45930),

Gene: Lysidious\_71 Start: 44855, Stop: 45016, Start Num: 63  
Candidate Starts for Lysidious\_71:  
(Start: 63 @44855 has 34 MA's), (Start: 67 @44867 has 1 MA's), (70, 44876), (77, 44945),

Gene: Magsby\_62 Start: 39305, Stop: 39466, Start Num: 68  
Candidate Starts for Magsby\_62:  
(38, 39176), (41, 39185), (Start: 68 @39305 has 129 MA's), (75, 39356), (83, 39449),

Gene: Majeke\_64 Start: 40672, Stop: 40806, Start Num: 68  
Candidate Starts for Majeke\_64:  
(33, 40474), (39, 40552), (Start: 68 @40672 has 129 MA's),

Gene: Malachai\_68 Start: 45480, Stop: 45644, Start Num: 63  
Candidate Starts for Malachai\_68:  
(11, 44973), (55, 45447), (Start: 63 @45480 has 34 MA's), (70, 45507), (72, 45516),

Gene: Malithi\_61 Start: 39664, Stop: 39822, Start Num: 62  
Candidate Starts for Malithi\_61:  
(36, 39553), (40, 39577), (Start: 62 @39664 has 2 MA's), (Start: 66 @39676 has 3 MA's), (Start: 68 @39688 has 129 MA's), (75, 39739),

Gene: Mandlovu\_69 Start: 44232, Stop: 44366, Start Num: 68  
Candidate Starts for Mandlovu\_69:  
(57, 44178), (Start: 68 @44232 has 129 MA's), (75, 44283), (76, 44298),

Gene: Mangethe\_64 Start: 40672, Stop: 40806, Start Num: 68  
Candidate Starts for Mangethe\_64:  
(33, 40474), (39, 40552), (Start: 68 @40672 has 129 MA's),

Gene: Megiddo\_60 Start: 41056, Stop: 41202, Start Num: 68  
Candidate Starts for Megiddo\_60:  
(16, 40711), (29, 40834), (Start: 68 @41056 has 129 MA's), (75, 41107),

Gene: Melba\_69 Start: 42570, Stop: 42728, Start Num: 63  
Candidate Starts for Melba\_69:  
(Start: 63 @42570 has 34 MA's), (Start: 67 @42582 has 1 MA's), (82, 42714),

Gene: Mellie\_66 Start: 42417, Stop: 42575, Start Num: 63  
Candidate Starts for Mellie\_66:  
(Start: 63 @42417 has 34 MA's), (Start: 67 @42429 has 1 MA's), (70, 42438),

Gene: Melville\_68 Start: 38914, Stop: 39075, Start Num: 68  
Candidate Starts for Melville\_68:  
(38, 38785), (41, 38794), (Start: 68 @38914 has 129 MA's), (75, 38965), (83, 39058),

Gene: MichelleMyBell\_60 Start: 37388, Stop: 37522, Start Num: 68  
Candidate Starts for MichelleMyBell\_60:

(Start: 44 @37295 has 2 MA's), (48, 37322), (Start: 50 @37328 has 1 MA's), (Start: 68 @37388 has 129 MA's),

Gene: MilanaBonita\_67 Start: 45011, Stop: 45145, Start Num: 68

Candidate Starts for MilanaBonita\_67:

(33, 44813), (39, 44891), (Start: 68 @45011 has 129 MA's), (75, 45062), (76, 45077),

Gene: Minnie\_71 Start: 48191, Stop: 48325, Start Num: 68

Candidate Starts for Minnie\_71:

(57, 48137), (Start: 68 @48191 has 129 MA's), (75, 48242), (76, 48257),

Gene: MintFen\_70 Start: 42815, Stop: 42970, Start Num: 63

Candidate Starts for MintFen\_70:

(45, 42743), (46, 42749), (51, 42767), (Start: 63 @42815 has 34 MA's), (Start: 67 @42827 has 1 MA's), (70, 42836),

Gene: Misha28\_83 Start: 51321, Stop: 51461, Start Num: 68

Candidate Starts for Misha28\_83:

(42, 51210), (49, 51252), (58, 51282), (59, 51288), (Start: 68 @51321 has 129 MA's), (74, 51363),

Gene: MissRona\_74 Start: 46616, Stop: 46774, Start Num: 63

Candidate Starts for MissRona\_74:

(22, 46322), (27, 46346), (32, 46418), (41, 46520), (Start: 63 @46616 has 34 MA's), (Start: 67 @46628 has 1 MA's),

Gene: Ms6\_72 Start: 42574, Stop: 42708, Start Num: 68

Candidate Starts for Ms6\_72:

(Start: 44 @42475 has 2 MA's), (Start: 68 @42574 has 129 MA's), (75, 42625), (76, 42640),

Gene: MulchSalad\_81 Start: 48362, Stop: 48490, Start Num: 68

Candidate Starts for MulchSalad\_81:

(38, 48233), (41, 48242), (Start: 68 @48362 has 129 MA's),

Gene: Murp\_67 Start: 45821, Stop: 45982, Start Num: 65

Candidate Starts for Murp\_67:

(Start: 63 @45818 has 34 MA's), (Start: 65 @45821 has 3 MA's), (69, 45836), (70, 45845), (82, 45968),

Gene: Nazo\_62 Start: 41086, Stop: 41238, Start Num: 62

Candidate Starts for Nazo\_62:

(36, 40975), (40, 40999), (Start: 62 @41086 has 2 MA's), (Start: 66 @41098 has 3 MA's), (Start: 68 @41110 has 129 MA's), (73, 41134), (75, 41161),

Gene: Necropolis\_59 Start: 39139, Stop: 39273, Start Num: 68

Candidate Starts for Necropolis\_59:

(36, 39004), (40, 39028), (Start: 62 @39115 has 2 MA's), (Start: 66 @39127 has 3 MA's), (Start: 68 @39139 has 129 MA's), (75, 39190),

Gene: Nimbo\_67 Start: 45679, Stop: 45813, Start Num: 68

Candidate Starts for Nimbo\_67:

(14, 45259), (15, 45292), (49, 45622), (Start: 61 @45655 has 1 MA's), (Start: 68 @45679 has 129 MA's), (71, 45700), (75, 45730), (76, 45745),

Gene: Obliviate\_68 Start: 42724, Stop: 42882, Start Num: 63  
Candidate Starts for Obliviate\_68:  
(45, 42652), (46, 42658), (51, 42676), (Start: 63 @42724 has 34 MA's), (Start: 67 @42736 has 1 MA's),

Gene: Ogotogo\_79 Start: 46196, Stop: 46330, Start Num: 68  
Candidate Starts for Ogotogo\_79:  
(14, 45776), (15, 45809), (49, 46139), (Start: 61 @46172 has 1 MA's), (Start: 68 @46196 has 129 MA's), (71, 46217), (75, 46247), (76, 46262),

Gene: OldBen\_72 Start: 47071, Stop: 47205, Start Num: 68  
Candidate Starts for OldBen\_72:  
(14, 46651), (15, 46684), (49, 47014), (Start: 61 @47047 has 1 MA's), (Start: 68 @47071 has 129 MA's), (71, 47092), (75, 47122), (76, 47137),

Gene: Ovechkin\_76 Start: 46664, Stop: 46873, Start Num: 44  
Candidate Starts for Ovechkin\_76:  
(42, 46655), (Start: 44 @46664 has 2 MA's), (48, 46691), (Start: 68 @46739 has 129 MA's),

Gene: PCoral7\_69 Start: 43537, Stop: 43695, Start Num: 63  
Candidate Starts for PCoral7\_69:  
(Start: 63 @43537 has 34 MA's), (Start: 67 @43549 has 1 MA's), (70, 43558), (72, 43567),

Gene: PHappiness\_75 Start: 47900, Stop: 48034, Start Num: 68  
Candidate Starts for PHappiness\_75:  
(14, 47480), (15, 47513), (49, 47843), (Start: 61 @47876 has 1 MA's), (Start: 68 @47900 has 129 MA's), (71, 47921), (75, 47951), (76, 47966),

Gene: Panchino\_56 Start: 38919, Stop: 39056, Start Num: 68  
Candidate Starts for Panchino\_56:  
(17, 38559), (18, 38568), (21, 38595), (36, 38784), (40, 38808), (Start: 62 @38895 has 2 MA's), (Start: 66 @38907 has 3 MA's), (Start: 68 @38919 has 129 MA's), (75, 38970), (80, 39045),

Gene: Parmesanjohn\_63 Start: 39363, Stop: 39524, Start Num: 68  
Candidate Starts for Parmesanjohn\_63:  
(38, 39234), (41, 39243), (Start: 68 @39363 has 129 MA's), (75, 39414), (83, 39507),

Gene: Petra\_73 Start: 44768, Stop: 44935, Start Num: 63  
Candidate Starts for Petra\_73:  
(22, 44474), (27, 44498), (31, 44561), (32, 44570), (Start: 63 @44768 has 34 MA's), (69, 44789),

Gene: Phalconet\_71 Start: 45548, Stop: 45682, Start Num: 68  
Candidate Starts for Phalconet\_71:  
(39, 45428), (Start: 68 @45548 has 129 MA's), (75, 45599), (76, 45614),

Gene: Phalm\_62 Start: 41278, Stop: 41403, Start Num: 68  
Candidate Starts for Phalm\_62:  
(36, 41143), (40, 41167), (Start: 62 @41254 has 2 MA's), (Start: 66 @41266 has 3 MA's), (Start: 68 @41278 has 129 MA's), (75, 41329),

Gene: Phanphagia\_72 Start: 46628, Stop: 46762, Start Num: 68  
Candidate Starts for Phanphagia\_72:

(33, 46430), (39, 46508), (Start: 44 @46529 has 2 MA's), (Start: 68 @46628 has 129 MA's), (75, 46679), (76, 46694),

Gene: Phayonce\_64 Start: 43136, Stop: 43282, Start Num: 68  
Candidate Starts for Phayonce\_64:  
(53, 43085), (Start: 68 @43136 has 129 MA's), (73, 43160), (75, 43187),

Gene: Phegasus\_64 Start: 40639, Stop: 40773, Start Num: 68  
Candidate Starts for Phegasus\_64:  
(33, 40441), (39, 40519), (Start: 68 @40639 has 129 MA's),

Gene: PhesterPhotato\_77 Start: 46716, Stop: 46850, Start Num: 68  
Candidate Starts for PhesterPhotato\_77:  
(Start: 61 @46692 has 1 MA's), (Start: 68 @46716 has 129 MA's), (75, 46767), (76, 46782),

Gene: Philonius\_63 Start: 39528, Stop: 39689, Start Num: 68  
Candidate Starts for Philonius\_63:  
(38, 39399), (41, 39408), (Start: 68 @39528 has 129 MA's), (75, 39579), (83, 39672),

Gene: Phineas\_62 Start: 40096, Stop: 40242, Start Num: 66  
Candidate Starts for Phineas\_62:  
(36, 39973), (40, 39997), (Start: 62 @40084 has 2 MA's), (Start: 66 @40096 has 3 MA's), (Start: 68 @40108 has 129 MA's), (75, 40159),

Gene: Phloss\_61 Start: 38770, Stop: 38931, Start Num: 68  
Candidate Starts for Phloss\_61:  
(38, 38641), (41, 38650), (Start: 68 @38770 has 129 MA's), (75, 38821), (83, 38914),

Gene: Phrann\_59 Start: 40673, Stop: 40810, Start Num: 68  
Candidate Starts for Phrann\_59:  
(57, 40619), (Start: 68 @40673 has 129 MA's), (75, 40724), (80, 40799),

Gene: PhrostedPhlake\_75 Start: 45016, Stop: 45183, Start Num: 63  
Candidate Starts for PhrostedPhlake\_75:  
(Start: 63 @45016 has 34 MA's), (69, 45037),

Gene: Piper2020\_87 Start: 52127, Stop: 52279, Start Num: 68  
Candidate Starts for Piper2020\_87:  
(38, 51998), (41, 52007), (Start: 68 @52127 has 129 MA's),

Gene: Pipp\_73 Start: 44772, Stop: 44930, Start Num: 63  
Candidate Starts for Pipp\_73:  
(45, 44700), (46, 44706), (51, 44724), (Start: 63 @44772 has 34 MA's), (Start: 67 @44784 has 1 MA's),

Gene: Pipsqueaks\_64 Start: 39341, Stop: 39502, Start Num: 68  
Candidate Starts for Pipsqueaks\_64:  
(38, 39212), (41, 39221), (Start: 68 @39341 has 129 MA's), (75, 39392), (83, 39485),

Gene: Poenanya\_78 Start: 47769, Stop: 47903, Start Num: 68  
Candidate Starts for Poenanya\_78:  
(14, 47349), (15, 47382), (49, 47712), (Start: 61 @47745 has 1 MA's), (Start: 68 @47769 has 129 MA's), (71, 47790), (75, 47820), (76, 47835),

Gene: Polka14\_79 Start: 48559, Stop: 48693, Start Num: 68  
Candidate Starts for Polka14\_79:  
(14, 48139), (15, 48172), (49, 48502), (Start: 61 @48535 has 1 MA's), (Start: 68 @48559 has 129 MA's), (71, 48580), (75, 48610), (76, 48625),

Gene: Polkaroo\_63 Start: 41848, Stop: 41988, Start Num: 68  
Candidate Starts for Polkaroo\_63:  
(59, 41824), (Start: 68 @41848 has 129 MA's), (75, 41899),

Gene: PopTart\_64 Start: 43414, Stop: 43548, Start Num: 68  
Candidate Starts for PopTart\_64:  
(Start: 68 @43414 has 129 MA's), (75, 43465), (76, 43480),

Gene: PrincePatrick\_70 Start: 42596, Stop: 42754, Start Num: 63  
Candidate Starts for PrincePatrick\_70:  
(Start: 63 @42596 has 34 MA's), (Start: 67 @42608 has 1 MA's), (70, 42617), (72, 42626),

Gene: Purky\_74 Start: 45740, Stop: 45874, Start Num: 68  
Candidate Starts for Purky\_74:  
(40, 45620), (Start: 62 @45716 has 2 MA's), (Start: 66 @45728 has 3 MA's), (Start: 68 @45740 has 129 MA's), (75, 45791),

Gene: Pygmy\_64 Start: 41560, Stop: 41706, Start Num: 66  
Candidate Starts for Pygmy\_64:  
(36, 41437), (40, 41461), (Start: 62 @41548 has 2 MA's), (Start: 66 @41560 has 3 MA's), (Start: 68 @41572 has 129 MA's), (75, 41623),

Gene: QueenHazel\_58 Start: 39693, Stop: 39827, Start Num: 68  
Candidate Starts for QueenHazel\_58:  
(43, 39597), (56, 39654), (Start: 68 @39693 has 129 MA's), (75, 39744), (81, 39822),

Gene: Quico\_83 Start: 49042, Stop: 49176, Start Num: 68  
Candidate Starts for Quico\_83:  
(39, 48922), (Start: 44 @48943 has 2 MA's), (Start: 68 @49042 has 129 MA's), (75, 49093), (76, 49108),

Gene: Rebel\_56 Start: 35847, Stop: 35981, Start Num: 68  
Candidate Starts for Rebel\_56:  
(Start: 44 @35754 has 2 MA's), (48, 35781), (Start: 50 @35787 has 1 MA's), (Start: 68 @35847 has 129 MA's), (75, 35898), (78, 35970),

Gene: RedBird\_76 Start: 48274, Stop: 48408, Start Num: 68  
Candidate Starts for RedBird\_76:  
(33, 48079), (39, 48157), (Start: 68 @48274 has 129 MA's), (75, 48325), (76, 48340),

Gene: RitaG\_75 Start: 47678, Stop: 47836, Start Num: 61  
Candidate Starts for RitaG\_75:  
(14, 47282), (15, 47315), (49, 47645), (Start: 61 @47678 has 1 MA's), (Start: 68 @47702 has 129 MA's), (71, 47723), (75, 47753), (76, 47768),

Gene: Rubeelu\_59 Start: 37429, Stop: 37563, Start Num: 64  
Candidate Starts for Rubeelu\_59:

(37, 37315), (39, 37324), (47, 37366), (54, 37384), (Start: 64 @37429 has 2 MA's), (75, 37480), (78, 37552),

Gene: SG4\_71 Start: 45477, Stop: 45611, Start Num: 68

Candidate Starts for SG4\_71:

(33, 45279), (39, 45357), (Start: 68 @45477 has 129 MA's), (75, 45528), (76, 45543),

Gene: Samba\_69 Start: 45554, Stop: 45712, Start Num: 63

Candidate Starts for Samba\_69:

(Start: 63 @45554 has 34 MA's), (Start: 67 @45566 has 1 MA's), (70, 45575),

Gene: Sandalphon\_69 Start: 46176, Stop: 46310, Start Num: 68

Candidate Starts for Sandalphon\_69:

(57, 46122), (Start: 68 @46176 has 129 MA's), (75, 46227), (76, 46242),

Gene: Sassafras\_76 Start: 46591, Stop: 46725, Start Num: 68

Candidate Starts for Sassafras\_76:

(14, 46171), (15, 46204), (49, 46534), (Start: 61 @46567 has 1 MA's), (Start: 68 @46591 has 129 MA's), (71, 46612), (75, 46642), (76, 46657),

Gene: SassyB\_64 Start: 43414, Stop: 43548, Start Num: 68

Candidate Starts for SassyB\_64:

(Start: 68 @43414 has 129 MA's), (75, 43465), (76, 43480),

Gene: Sbash\_75 Start: 48069, Stop: 48203, Start Num: 68

Candidate Starts for Sbash\_75:

(Start: 68 @48069 has 129 MA's), (75, 48120),

Gene: Schnauzer\_64 Start: 39363, Stop: 39524, Start Num: 68

Candidate Starts for Schnauzer\_64:

(38, 39234), (41, 39243), (Start: 68 @39363 has 129 MA's), (75, 39414), (83, 39507),

Gene: Scitech\_58 Start: 38766, Stop: 38927, Start Num: 68

Candidate Starts for Scitech\_58:

(38, 38637), (41, 38646), (Start: 68 @38766 has 129 MA's), (75, 38817), (83, 38910),

Gene: Scottish\_73 Start: 46250, Stop: 46384, Start Num: 68

Candidate Starts for Scottish\_73:

(14, 45830), (15, 45863), (49, 46193), (Start: 61 @46226 has 1 MA's), (Start: 68 @46250 has 129 MA's), (71, 46271), (75, 46301), (76, 46316),

Gene: Seagreen\_75 Start: 47524, Stop: 47658, Start Num: 68

Candidate Starts for Seagreen\_75:

(33, 47326), (39, 47404), (Start: 44 @47425 has 2 MA's), (Start: 68 @47524 has 129 MA's), (75, 47575), (76, 47590),

Gene: Shauna1\_73 Start: 46878, Stop: 47012, Start Num: 68

Candidate Starts for Shauna1\_73:

(33, 46680), (39, 46758), (Start: 44 @46779 has 2 MA's), (Start: 68 @46878 has 129 MA's), (75, 46929), (76, 46944),

Gene: Shipwreck\_64 Start: 41547, Stop: 41681, Start Num: 68

Candidate Starts for Shipwreck\_64:

(36, 41412), (40, 41436), (Start: 62 @41523 has 2 MA's), (Start: 66 @41535 has 3 MA's), (Start: 68 @41547 has 129 MA's), (75, 41598),

Gene: Shweta\_58 Start: 38359, Stop: 38496, Start Num: 68

Candidate Starts for Shweta\_58:

(42, 38275), (Start: 44 @38284 has 2 MA's), (48, 38311), (Start: 50 @38317 has 1 MA's), (Start: 68 @38359 has 129 MA's), (75, 38410), (79, 38485),

Gene: SiSi\_70 Start: 45708, Stop: 45842, Start Num: 68

Candidate Starts for SiSi\_70:

(Start: 68 @45708 has 129 MA's), (75, 45759), (76, 45774),

Gene: Silvafighter\_65 Start: 38906, Stop: 39067, Start Num: 68

Candidate Starts for Silvafighter\_65:

(38, 38777), (41, 38786), (Start: 68 @38906 has 129 MA's), (75, 38957), (83, 39050),

Gene: Silvy\_64 Start: 39996, Stop: 40157, Start Num: 68

Candidate Starts for Silvy\_64:

(38, 39867), (41, 39876), (Start: 68 @39996 has 129 MA's), (75, 40047), (83, 40140),

Gene: SkinnyPete\_60 Start: 39110, Stop: 39271, Start Num: 68

Candidate Starts for SkinnyPete\_60:

(38, 38981), (41, 38990), (Start: 68 @39110 has 129 MA's), (75, 39161), (83, 39254),

Gene: Smurph\_63 Start: 39363, Stop: 39524, Start Num: 68

Candidate Starts for Smurph\_63:

(38, 39234), (41, 39243), (Start: 68 @39363 has 129 MA's), (75, 39414), (83, 39507),

Gene: Sonah\_62 Start: 39244, Stop: 39378, Start Num: 68

Candidate Starts for Sonah\_62:

(36, 39109), (40, 39133), (Start: 62 @39220 has 2 MA's), (Start: 66 @39232 has 3 MA's), (Start: 68 @39244 has 129 MA's), (75, 39295),

Gene: StAnnes\_71 Start: 46866, Stop: 47000, Start Num: 68

Candidate Starts for StAnnes\_71:

(39, 46746), (Start: 68 @46866 has 129 MA's), (75, 46917), (81, 46995),

Gene: StevieRay\_66 Start: 42311, Stop: 42445, Start Num: 68

Candidate Starts for StevieRay\_66:

(58, 42287), (Start: 68 @42311 has 129 MA's), (71, 42332), (75, 42362),

Gene: StressBall\_61 Start: 40980, Stop: 41105, Start Num: 68

Candidate Starts for StressBall\_61:

(1, 40242), (2, 40311), (5, 40359), (7, 40431), (9, 40437), (10, 40455), (13, 40506), (36, 40845), (40, 40869), (Start: 62 @40956 has 2 MA's), (Start: 66 @40968 has 3 MA's), (Start: 68 @40980 has 129 MA's), (75, 41031),

Gene: Strokeseat\_69 Start: 44289, Stop: 44423, Start Num: 68

Candidate Starts for Strokeseat\_69:

(57, 44235), (Start: 68 @44289 has 129 MA's), (75, 44340), (76, 44355),

Gene: TChen\_74 Start: 47755, Stop: 47964, Start Num: 44

Candidate Starts for TChen\_74:

(42, 47746), (Start: 44 @47755 has 2 MA's), (48, 47782), (Start: 68 @47830 has 129 MA's), (75, 47881),

Gene: Taj\_80 Start: 48332, Stop: 48466, Start Num: 68

Candidate Starts for Taj\_80:

(33, 48134), (39, 48212), (Start: 44 @48233 has 2 MA's), (Start: 68 @48332 has 129 MA's), (75, 48383), (76, 48398),

Gene: Tapioca\_61 Start: 39880, Stop: 40041, Start Num: 68

Candidate Starts for Tapioca\_61:

(38, 39751), (41, 39760), (Start: 68 @39880 has 129 MA's), (75, 39931), (83, 40024),

Gene: Techage\_62 Start: 40112, Stop: 40246, Start Num: 68

Candidate Starts for Techage\_62:

(33, 39914), (39, 39992), (Start: 68 @40112 has 129 MA's), (75, 40163),

Gene: Thespis\_63 Start: 41077, Stop: 41211, Start Num: 68

Candidate Starts for Thespis\_63:

(58, 41053), (Start: 68 @41077 has 129 MA's), (71, 41098), (75, 41128),

Gene: ThulaThula\_68 Start: 44563, Stop: 44709, Start Num: 68

Candidate Starts for ThulaThula\_68:

(53, 44512), (Start: 68 @44563 has 129 MA's), (73, 44587), (75, 44614),

Gene: Toast\_69 Start: 43537, Stop: 43695, Start Num: 63

Candidate Starts for Toast\_69:

(Start: 63 @43537 has 34 MA's), (Start: 67 @43549 has 1 MA's), (70, 43558), (72, 43567),

Gene: TootsiePop\_83 Start: 51321, Stop: 51461, Start Num: 68

Candidate Starts for TootsiePop\_83:

(42, 51210), (49, 51252), (58, 51282), (59, 51288), (Start: 68 @51321 has 129 MA's), (74, 51363),

Gene: Tortellini\_69 Start: 45507, Stop: 45668, Start Num: 68

Candidate Starts for Tortellini\_69:

(42, 45396), (58, 45468), (59, 45474), (Start: 68 @45507 has 129 MA's), (74, 45549),

Gene: UmaThurman\_69 Start: 43900, Stop: 44064, Start Num: 63

Candidate Starts for UmaThurman\_69:

(55, 43867), (Start: 63 @43900 has 34 MA's),

Gene: Utz\_61 Start: 43181, Stop: 43348, Start Num: 60

Candidate Starts for Utz\_61:

(Start: 60 @43181 has 2 MA's), (Start: 67 @43205 has 1 MA's), (70, 43214),

Gene: Vidya\_60 Start: 39365, Stop: 39499, Start Num: 68

Candidate Starts for Vidya\_60:

(36, 39230), (40, 39254), (Start: 62 @39341 has 2 MA's), (Start: 66 @39353 has 3 MA's), (Start: 68 @39365 has 129 MA's), (75, 39416),

Gene: Walrus\_67 Start: 43261, Stop: 43425, Start Num: 65

Candidate Starts for Walrus\_67:

(Start: 65 @43261 has 3 MA's), (69, 43276),



Gene: Wee\_79 Start: 48408, Stop: 48542, Start Num: 68  
Candidate Starts for Wee\_79:  
(33, 48210), (39, 48288), (Start: 44 @48309 has 2 MA's), (Start: 68 @48408 has 129 MA's), (75, 48459), (76, 48474),

Gene: William\_72 Start: 44944, Stop: 45102, Start Num: 63  
Candidate Starts for William\_72:  
(Start: 63 @44944 has 34 MA's), (Start: 67 @44956 has 1 MA's), (70, 44965), (72, 44974),

Gene: Willsammy\_63 Start: 41455, Stop: 41589, Start Num: 68  
Candidate Starts for Willsammy\_63:  
(36, 41320), (40, 41344), (Start: 62 @41431 has 2 MA's), (Start: 66 @41443 has 3 MA's), (Start: 68 @41455 has 129 MA's), (75, 41506),

Gene: Wisp\_68 Start: 43598, Stop: 43756, Start Num: 63  
Candidate Starts for Wisp\_68:  
(55, 43565), (Start: 63 @43598 has 34 MA's), (Start: 67 @43610 has 1 MA's), (82, 43742),

Gene: Wocket\_67 Start: 43577, Stop: 43747, Start Num: 60  
Candidate Starts for Wocket\_67:  
(Start: 60 @43577 has 2 MA's), (Start: 67 @43601 has 1 MA's),

Gene: Xavia\_63 Start: 45540, Stop: 45674, Start Num: 68  
Candidate Starts for Xavia\_63:  
(Start: 68 @45540 has 129 MA's), (75, 45591),

Gene: Xeno\_60 Start: 38028, Stop: 38162, Start Num: 68  
Candidate Starts for Xeno\_60:  
(39, 37908), (Start: 68 @38028 has 129 MA's),

Gene: Xerxes\_63 Start: 39360, Stop: 39521, Start Num: 68  
Candidate Starts for Xerxes\_63:  
(38, 39231), (41, 39240), (Start: 68 @39360 has 129 MA's), (75, 39411), (83, 39504),

Gene: Xula\_57 Start: 39314, Stop: 39448, Start Num: 68  
Candidate Starts for Xula\_57:  
(43, 39218), (56, 39275), (Start: 68 @39314 has 129 MA's), (75, 39365), (81, 39443),

Gene: Zarbodnamra\_72 Start: 43709, Stop: 43876, Start Num: 63  
Candidate Starts for Zarbodnamra\_72:  
(27, 43439), (32, 43511), (35, 43580), (Start: 63 @43709 has 34 MA's), (69, 43730),

Gene: ZiggyZoo\_70 Start: 45187, Stop: 45345, Start Num: 63  
Candidate Starts for ZiggyZoo\_70:  
(30, 44971), (52, 45142), (Start: 63 @45187 has 34 MA's), (Start: 67 @45199 has 1 MA's),

Gene: Zilizebeth\_67 Start: 40886, Stop: 41020, Start Num: 68  
Candidate Starts for Zilizebeth\_67:  
(Start: 68 @40886 has 129 MA's), (75, 40937),