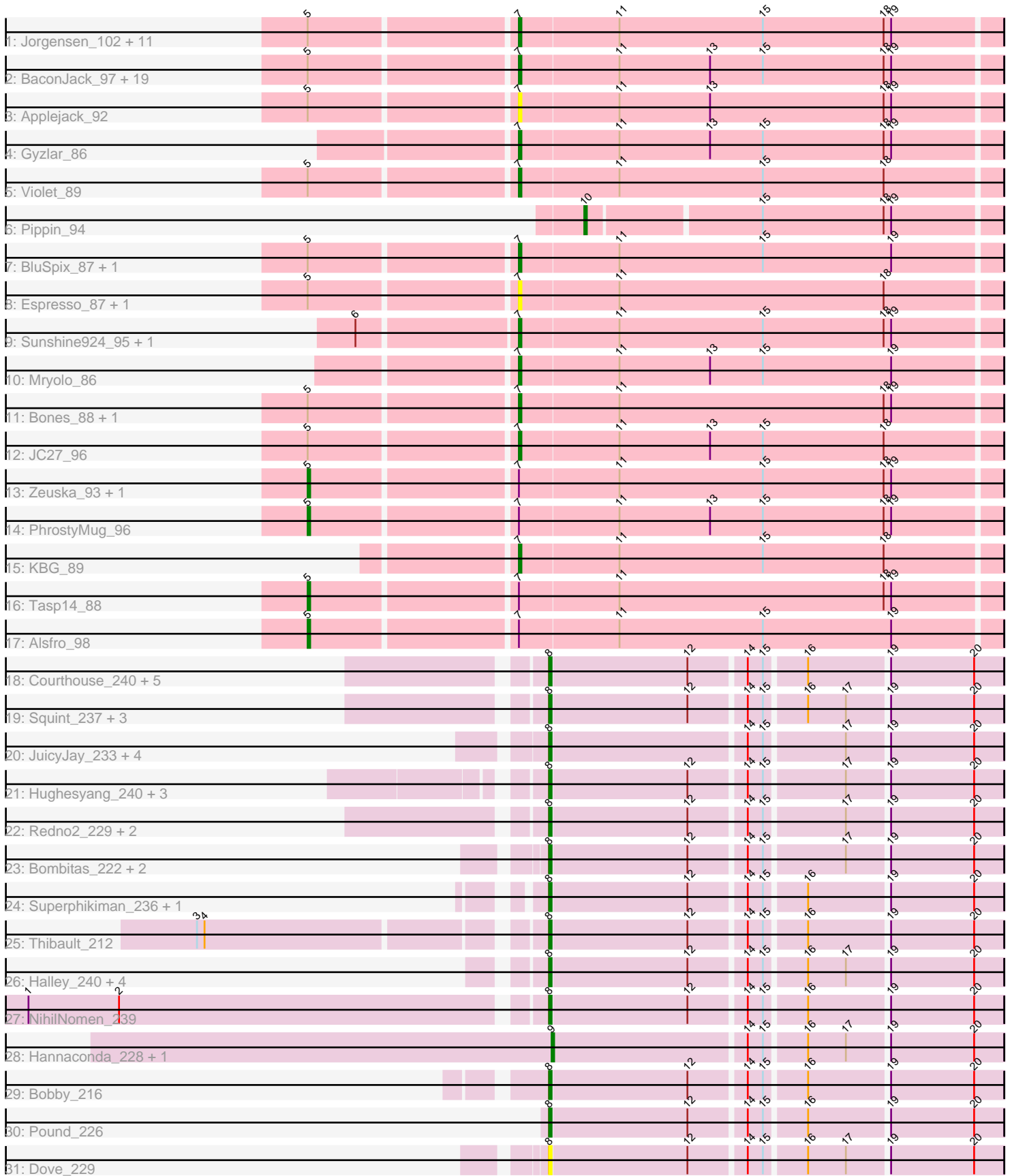


Pham 156294



Note: Tracks are now grouped by subcluster and scaled. Switching in subcluster is indicated by changes in track color. Track scale is now set by default to display the region 30 bp upstream of start 1 to 30 bp downstream of the last possible start. If this default region is judged to be packed too tightly with annotated starts, the track will be further scaled to only show that region of the ORF with annotated starts. This action will be indicated by adding "Zoomed" to the title. For starts, yellow indicates the location of called starts comprised solely of Glimmer/GeneMark auto-annotations, green indicates the location of called starts with at least 1 manual gene annotation.

Pham 156294 Report

This analysis was run 04/12/24 on database version 558.

Pham number 156294 has 91 members, 6 are drafts.

Phages represented in each track:

- Track 1 : Jorgensen_102, Abrogate_900, Sagefire_87, SkiPole_101, Marsha_95, RidgeCB_92, Paraselene_89, Jerm2_91, BigMau_92, Marge_88, PinkPlastic_84, Solon_85
- Track 2 : BaconJack_97, Monet_95, Parliament_92, Bob3_93, Nerujay_95, Mule_94, Edtherson_90, Lamina13_95, Homines_86, Bxb1_86, Smairt_99, Trouble_92, Gandalf20_93, Perseus_92, Fushigi_86, Sumter_89, Aeneas_98, JackSparrow_93, Ashballer_94, Crispicious1_88
- Track 3 : Applejack_92
- Track 4 : Gyzlar_86
- Track 5 : Violet_89
- Track 6 : Pippin_94
- Track 7 : BluSpix_87, IgnatiusPatJac_91
- Track 8 : Espresso_87, StewieG_89
- Track 9 : Sunshine924_95, MPlant7149_91
- Track 10 : Mryolo_86
- Track 11 : Bones_88, HarryOW_93
- Track 12 : JC27_96
- Track 13 : Zeuska_93, HermioneGrange_95
- Track 14 : PhrostyMug_96
- Track 15 : KBG_89
- Track 16 : Tasp14_88
- Track 17 : Alsfro_98
- Track 18 : Courthouse_240, Kalah2_227, Constella_227, LittleE_227, DmpstrDiver_237, Optimus_229
- Track 19 : Squint_237, Minerva_236, Odette_237, Duke13_238
- Track 20 : JuicyJay_233, Klein_246, Wanda_238, Beem_241, Zelink_231
- Track 21 : Hughesyang_240, Schatzie_230, Yeet_232, Phoebus_236
- Track 22 : Redno2_229, ThreeRngTarjay_237, EricMillard_235
- Track 23 : Bombitas_222, Ejimix_229, HokkenD_230
- Track 24 : Superphikiman_236, Ariel_244
- Track 25 : Thibault_212
- Track 26 : Halley_240, Lucky2013_236, Dallas_236, MiaZeal_249, Porcelain_240
- Track 27 : NihilNomen_239
- Track 28 : Hannaconda_228, KashFlow_230
- Track 29 : Bobby_216
- Track 30 : Pound_226
- Track 31 : Dove_229

Summary of Final Annotations (See graph section above for start numbers):

The start number called the most often in the published annotations is 7, it was called in 42 of the 85 non-draft genes in the pham.

Genes that call this "Most Annotated" start:

- Abrogate_900, Aeneas_98, Applejack_92, Ashballer_94, BaconJack_97, BigMau_92, BluSpix_87, Bob3_93, Bones_88, Bxb1_86, Crispicious1_88, Edtherson_90, Espresso_87, Fushigi_86, Gandalf20_93, Gyzlar_86, HarryOW_93, Homines_86, IgnatiusPatJac_91, JC27_96, JackSparrow_93, Jerm2_91, Jorgensen_102, KBG_89, Lamina13_95, MPlant7149_91, Marge_88, Marsha_95, Monet_95, Mryolo_86, Mule_94, Nerujay_95, Paraselene_89, Parliament_92, Perseus_92, PinkPlastic_84, RidgeCB_92, Sagefire_87, SkiPole_101, Smairt_99, Solon_85, StewieG_89, Sumter_89, Sunshine924_95, Trouble_92, Violet_89,

Genes that have the "Most Annotated" start but do not call it:

- Alsfro_98, HermioneGrange_95, PhrostyMug_96, Tasp14_88, Zeuska_93,

Genes that do not have the "Most Annotated" start:

- Ariel_244, Beem_241, Bobby_216, Bombitas_222, Constella_227, Courthouse_240, Dallas_236, DmpstrDiver_237, Dove_229, Duke13_238, Ejimix_229, EricMillard_235, Halley_240, Hannaconda_228, HokkenD_230, Hughesyang_240, JuicyJay_233, Kalah2_227, KashFlow_230, Klein_246, LittleE_227, Lucky2013_236, MiaZeal_249, Minerva_236, NihilNomen_239, Odette_237, Optimus_229, Phoebus_236, Pippin_94, Porcelain_240, Pound_226, Redno2_229, Schatzie_230, Squint_237, Superphikiman_236, Thibault_212, ThreeRngTarjay_237, Wanda_238, Yeet_232, Zelink_231,

Summary by start number:

Start 5:

- Found in 46 of 91 (50.5%) of genes in pham
- Manual Annotations of this start: 5 of 85
- Called 10.9% of time when present
- Phage (with cluster) where this start called: Alsfro_98 (A1), HermioneGrange_95 (A1), PhrostyMug_96 (A1), Tasp14_88 (A1), Zeuska_93 (A1),

Start 7:

- Found in 51 of 91 (56.0%) of genes in pham
- Manual Annotations of this start: 42 of 85
- Called 90.2% of time when present
- Phage (with cluster) where this start called: Abrogate_900 (A1), Aeneas_98 (A1), Applejack_92 (A1), Ashballer_94 (A1), BaconJack_97 (A1), BigMau_92 (A1), BluSpix_87 (A1), Bob3_93 (A1), Bones_88 (A1), Bxb1_86 (A1), Crispicious1_88 (A1), Edtherson_90 (A1), Espresso_87 (A1), Fushigi_86 (A1), Gandalf20_93 (A1), Gyzlar_86 (A1), HarryOW_93 (A1), Homines_86 (A1), IgnatiusPatJac_91 (A1), JC27_96 (A1), JackSparrow_93 (A1), Jerm2_91 (A1), Jorgensen_102 (A1), KBG_89 (A1), Lamina13_95 (A1), MPlant7149_91 (A1), Marge_88 (A1), Marsha_95 (A1), Monet_95 (A1), Mryolo_86 (A1), Mule_94 (A1), Nerujay_95 (A1), Paraselene_89

(A1), Parliament_92 (A1), Perseus_92 (A1), PinkPlastic_84 (A1), RidgeCB_92 (A1), Sagefire_87 (A1), SkiPole_101 (A1), Smairt_99 (A1), Solon_85 (A1), StewieG_89 (A1), Sumter_89 (A1), Sunshine924_95 (A1), Trouble_92 (A1), Violet_89 (A1),

Start 8:

- Found in 37 of 91 (40.7%) of genes in pham
- Manual Annotations of this start: 35 of 85
- Called 100.0% of time when present
- Phage (with cluster) where this start called: Ariel_244 (J), Beem_241 (J), Bobby_216 (J), Bombitas_222 (J), Constella_227 (J), Courthouse_240 (J), Dallas_236 (J), DmpstrDiver_237 (J), Dove_229 (J), Duke13_238 (J), Ejimix_229 (J), EricMillard_235 (J), Halley_240 (J), HokkenD_230 (J), Hughesyang_240 (J), JuicyJay_233 (J), Kalah2_227 (J), Klein_246 (J), LittleE_227 (J), Lucky2013_236 (J), MiaZeal_249 (J), Minerva_236 (J), NihilNomen_239 (J), Odette_237 (J), Optimus_229 (J), Phoebus_236 (J), Porcelain_240 (J), Pound_226 (J), Redno2_229 (J), Schatzie_230 (J), Squint_237 (J), Superphikiman_236 (J), Thibault_212 (J), ThreeRngTarjay_237 (J), Wanda_238 (J), Yeet_232 (J), Zelink_231 (J),

Start 9:

- Found in 2 of 91 (2.2%) of genes in pham
- Manual Annotations of this start: 2 of 85
- Called 100.0% of time when present
- Phage (with cluster) where this start called: Hannaconda_228 (J), KashFlow_230 (J),

Start 10:

- Found in 1 of 91 (1.1%) of genes in pham
- Manual Annotations of this start: 1 of 85
- Called 100.0% of time when present
- Phage (with cluster) where this start called: Pippin_94 (A1),

Summary by clusters:

There are 2 clusters represented in this pham: A1, J,

Info for manual annotations of cluster A1:

- Start number 5 was manually annotated 5 times for cluster A1.
- Start number 7 was manually annotated 42 times for cluster A1.
- Start number 10 was manually annotated 1 time for cluster A1.

Info for manual annotations of cluster J:

- Start number 8 was manually annotated 35 times for cluster J.
- Start number 9 was manually annotated 2 times for cluster J.

Gene Information:

Gene: Abrogate_900 Start: 51556, Stop: 51744, Start Num: 7

Candidate Starts for Abrogate_900:

(Start: 5 @51478 has 5 MA's), (Start: 7 @51556 has 42 MA's), (11, 51595), (15, 51652), (18, 51700), (19, 51703),

Gene: Aeneas_98 Start: 52710, Stop: 52898, Start Num: 7
Candidate Starts for Aeneas_98:
(Start: 5 @52632 has 5 MA's), (Start: 7 @52710 has 42 MA's), (11, 52749), (13, 52785), (15, 52806),
(18, 52854), (19, 52857),

Gene: Alsfro_98 Start: 50848, Stop: 51114, Start Num: 5
Candidate Starts for Alsfro_98:
(Start: 5 @50848 has 5 MA's), (Start: 7 @50926 has 42 MA's), (11, 50965), (15, 51022), (19, 51073),

Gene: Applejack_92 Start: 48809, Stop: 48997, Start Num: 7
Candidate Starts for Applejack_92:
(Start: 5 @48731 has 5 MA's), (Start: 7 @48809 has 42 MA's), (11, 48848), (13, 48884), (18, 48953),
(19, 48956),

Gene: Ariel_244 Start: 108574, Stop: 108404, Start Num: 8
Candidate Starts for Ariel_244:
(Start: 8 @108574 has 35 MA's), (12, 108520), (14, 108499), (15, 108493), (16, 108478), (19,
108448), (20, 108415),

Gene: Ashballer_94 Start: 51247, Stop: 51435, Start Num: 7
Candidate Starts for Ashballer_94:
(Start: 5 @51169 has 5 MA's), (Start: 7 @51247 has 42 MA's), (11, 51286), (13, 51322), (15, 51343),
(18, 51391), (19, 51394),

Gene: BaconJack_97 Start: 52821, Stop: 53009, Start Num: 7
Candidate Starts for BaconJack_97:
(Start: 5 @52743 has 5 MA's), (Start: 7 @52821 has 42 MA's), (11, 52860), (13, 52896), (15, 52917),
(18, 52965), (19, 52968),

Gene: Beem_241 Start: 111780, Stop: 111610, Start Num: 8
Candidate Starts for Beem_241:
(Start: 8 @111780 has 35 MA's), (14, 111705), (15, 111699), (17, 111669), (19, 111654), (20,
111621),

Gene: BigMau_92 Start: 51680, Stop: 51868, Start Num: 7
Candidate Starts for BigMau_92:
(Start: 5 @51602 has 5 MA's), (Start: 7 @51680 has 42 MA's), (11, 51719), (15, 51776), (18, 51824),
(19, 51827),

Gene: BluSpix_87 Start: 46262, Stop: 46450, Start Num: 7
Candidate Starts for BluSpix_87:
(Start: 5 @46184 has 5 MA's), (Start: 7 @46262 has 42 MA's), (11, 46301), (15, 46358), (19, 46409),

Gene: Bob3_93 Start: 51264, Stop: 51452, Start Num: 7
Candidate Starts for Bob3_93:
(Start: 5 @51186 has 5 MA's), (Start: 7 @51264 has 42 MA's), (11, 51303), (13, 51339), (15, 51360),
(18, 51408), (19, 51411),

Gene: Bobby_216 Start: 109229, Stop: 109059, Start Num: 8
Candidate Starts for Bobby_216:
(Start: 8 @109229 has 35 MA's), (12, 109175), (14, 109154), (15, 109148), (16, 109133), (19,
109103), (20, 109070),

Gene: Bombitas_222 Start: 108057, Stop: 107887, Start Num: 8
Candidate Starts for Bombitas_222:
(Start: 8 @108057 has 35 MA's), (12, 108003), (14, 107982), (15, 107976), (17, 107946), (19, 107931), (20, 107898),

Gene: Bones_88 Start: 51556, Stop: 51744, Start Num: 7
Candidate Starts for Bones_88:
(Start: 5 @51478 has 5 MA's), (Start: 7 @51556 has 42 MA's), (11, 51595), (18, 51700), (19, 51703),

Gene: Bxb1_86 Start: 49573, Stop: 49761, Start Num: 7
Candidate Starts for Bxb1_86:
(Start: 5 @49495 has 5 MA's), (Start: 7 @49573 has 42 MA's), (11, 49612), (13, 49648), (15, 49669), (18, 49717), (19, 49720),

Gene: Constella_227 Start: 109142, Stop: 108972, Start Num: 8
Candidate Starts for Constella_227:
(Start: 8 @109142 has 35 MA's), (12, 109088), (14, 109067), (15, 109061), (16, 109046), (19, 109016), (20, 108983),

Gene: Courthouse_240 Start: 109338, Stop: 109168, Start Num: 8
Candidate Starts for Courthouse_240:
(Start: 8 @109338 has 35 MA's), (12, 109284), (14, 109263), (15, 109257), (16, 109242), (19, 109212), (20, 109179),

Gene: Crispicous1_88 Start: 49851, Stop: 50039, Start Num: 7
Candidate Starts for Crispicous1_88:
(Start: 5 @49773 has 5 MA's), (Start: 7 @49851 has 42 MA's), (11, 49890), (13, 49926), (15, 49947), (18, 49995), (19, 49998),

Gene: Dallas_236 Start: 109912, Stop: 109742, Start Num: 8
Candidate Starts for Dallas_236:
(Start: 8 @109912 has 35 MA's), (12, 109858), (14, 109837), (15, 109831), (16, 109816), (17, 109801), (19, 109786), (20, 109753),

Gene: DmpstrDiver_237 Start: 110235, Stop: 110065, Start Num: 8
Candidate Starts for DmpstrDiver_237:
(Start: 8 @110235 has 35 MA's), (12, 110181), (14, 110160), (15, 110154), (16, 110139), (19, 110109), (20, 110076),

Gene: Dove_229 Start: 106531, Stop: 106361, Start Num: 8
Candidate Starts for Dove_229:
(Start: 8 @106531 has 35 MA's), (12, 106477), (14, 106456), (15, 106450), (16, 106435), (17, 106420), (19, 106405), (20, 106372),

Gene: Duke13_238 Start: 110743, Stop: 110573, Start Num: 8
Candidate Starts for Duke13_238:
(Start: 8 @110743 has 35 MA's), (12, 110689), (14, 110668), (15, 110662), (16, 110647), (17, 110632), (19, 110617), (20, 110584),

Gene: Edtherson_90 Start: 50521, Stop: 50709, Start Num: 7
Candidate Starts for Edtherson_90:
(Start: 5 @50443 has 5 MA's), (Start: 7 @50521 has 42 MA's), (11, 50560), (13, 50596), (15, 50617), (18, 50665), (19, 50668),

Gene: Ejimix_229 Start: 110016, Stop: 109846, Start Num: 8
Candidate Starts for Ejimix_229:
(Start: 8 @110016 has 35 MA's), (12, 109962), (14, 109941), (15, 109935), (17, 109905), (19, 109890), (20, 109857),

Gene: EricMillard_235 Start: 111867, Stop: 111697, Start Num: 8
Candidate Starts for EricMillard_235:
(Start: 8 @111867 has 35 MA's), (12, 111813), (14, 111792), (15, 111786), (17, 111756), (19, 111741), (20, 111708),

Gene: Espresso_87 Start: 50872, Stop: 51060, Start Num: 7
Candidate Starts for Espresso_87:
(Start: 5 @50794 has 5 MA's), (Start: 7 @50872 has 42 MA's), (11, 50911), (18, 51016),

Gene: Fushigi_86 Start: 49426, Stop: 49614, Start Num: 7
Candidate Starts for Fushigi_86:
(Start: 5 @49348 has 5 MA's), (Start: 7 @49426 has 42 MA's), (11, 49465), (13, 49501), (15, 49522), (18, 49570), (19, 49573),

Gene: Gandalf20_93 Start: 50762, Stop: 50950, Start Num: 7
Candidate Starts for Gandalf20_93:
(Start: 5 @50684 has 5 MA's), (Start: 7 @50762 has 42 MA's), (11, 50801), (13, 50837), (15, 50858), (18, 50906), (19, 50909),

Gene: Gyzlar_86 Start: 48081, Stop: 48269, Start Num: 7
Candidate Starts for Gyzlar_86:
(Start: 7 @48081 has 42 MA's), (11, 48120), (13, 48156), (15, 48177), (18, 48225), (19, 48228),

Gene: Halley_240 Start: 110399, Stop: 110229, Start Num: 8
Candidate Starts for Halley_240:
(Start: 8 @110399 has 35 MA's), (12, 110345), (14, 110324), (15, 110318), (16, 110303), (17, 110288), (19, 110273), (20, 110240),

Gene: Hannaconda_228 Start: 110059, Stop: 109889, Start Num: 9
Candidate Starts for Hannaconda_228:
(Start: 9 @110059 has 2 MA's), (14, 109984), (15, 109978), (16, 109963), (17, 109948), (19, 109933), (20, 109900),

Gene: HarryOW_93 Start: 51952, Stop: 52140, Start Num: 7
Candidate Starts for HarryOW_93:
(Start: 5 @51874 has 5 MA's), (Start: 7 @51952 has 42 MA's), (11, 51991), (18, 52096), (19, 52099),

Gene: HermioneGrange_95 Start: 52097, Stop: 52363, Start Num: 5
Candidate Starts for HermioneGrange_95:
(Start: 5 @52097 has 5 MA's), (Start: 7 @52175 has 42 MA's), (11, 52214), (15, 52271), (18, 52319), (19, 52322),

Gene: HokkenD_230 Start: 111715, Stop: 111545, Start Num: 8
Candidate Starts for HokkenD_230:
(Start: 8 @111715 has 35 MA's), (12, 111661), (14, 111640), (15, 111634), (17, 111604), (19, 111589), (20, 111556),

Gene: Homines_86 Start: 47514, Stop: 47702, Start Num: 7
Candidate Starts for Homines_86:
(Start: 5 @47436 has 5 MA's), (Start: 7 @47514 has 42 MA's), (11, 47553), (13, 47589), (15, 47610),
(18, 47658), (19, 47661),

Gene: Hughesyang_240 Start: 111748, Stop: 111578, Start Num: 8
Candidate Starts for Hughesyang_240:
(Start: 8 @111748 has 35 MA's), (12, 111694), (14, 111673), (15, 111667), (17, 111637), (19,
111622), (20, 111589),

Gene: IgnatiusPatJac_91 Start: 50207, Stop: 50395, Start Num: 7
Candidate Starts for IgnatiusPatJac_91:
(Start: 5 @50129 has 5 MA's), (Start: 7 @50207 has 42 MA's), (11, 50246), (15, 50303), (19, 50354),

Gene: JC27_96 Start: 51183, Stop: 51371, Start Num: 7
Candidate Starts for JC27_96:
(Start: 5 @51105 has 5 MA's), (Start: 7 @51183 has 42 MA's), (11, 51222), (13, 51258), (15, 51279),
(18, 51327),

Gene: JackSparrow_93 Start: 50623, Stop: 50811, Start Num: 7
Candidate Starts for JackSparrow_93:
(Start: 5 @50545 has 5 MA's), (Start: 7 @50623 has 42 MA's), (11, 50662), (13, 50698), (15, 50719),
(18, 50767), (19, 50770),

Gene: Jerm2_91 Start: 52244, Stop: 52432, Start Num: 7
Candidate Starts for Jerm2_91:
(Start: 5 @52166 has 5 MA's), (Start: 7 @52244 has 42 MA's), (11, 52283), (15, 52340), (18, 52388),
(19, 52391),

Gene: Jorgensen_102 Start: 52791, Stop: 52979, Start Num: 7
Candidate Starts for Jorgensen_102:
(Start: 5 @52713 has 5 MA's), (Start: 7 @52791 has 42 MA's), (11, 52830), (15, 52887), (18, 52935),
(19, 52938),

Gene: JuicyJay_233 Start: 111729, Stop: 111559, Start Num: 8
Candidate Starts for JuicyJay_233:
(Start: 8 @111729 has 35 MA's), (14, 111654), (15, 111648), (17, 111618), (19, 111603), (20,
111570),

Gene: KBG_89 Start: 52596, Stop: 52784, Start Num: 7
Candidate Starts for KBG_89:
(Start: 7 @52596 has 42 MA's), (11, 52635), (15, 52692), (18, 52740),

Gene: Kalah2_227 Start: 109290, Stop: 109120, Start Num: 8
Candidate Starts for Kalah2_227:
(Start: 8 @109290 has 35 MA's), (12, 109236), (14, 109215), (15, 109209), (16, 109194), (19,
109164), (20, 109131),

Gene: KashFlow_230 Start: 109952, Stop: 109782, Start Num: 9
Candidate Starts for KashFlow_230:
(Start: 9 @109952 has 2 MA's), (14, 109877), (15, 109871), (16, 109856), (17, 109841), (19, 109826),
(20, 109793),

Gene: Klein_246 Start: 110960, Stop: 110790, Start Num: 8
Candidate Starts for Klein_246:
(Start: 8 @110960 has 35 MA's), (14, 110885), (15, 110879), (17, 110849), (19, 110834), (20, 110801),

Gene: Lamina13_95 Start: 52275, Stop: 52463, Start Num: 7
Candidate Starts for Lamina13_95:
(Start: 5 @52197 has 5 MA's), (Start: 7 @52275 has 42 MA's), (11, 52314), (13, 52350), (15, 52371), (18, 52419), (19, 52422),

Gene: LittleE_227 Start: 107654, Stop: 107484, Start Num: 8
Candidate Starts for LittleE_227:
(Start: 8 @107654 has 35 MA's), (12, 107600), (14, 107579), (15, 107573), (16, 107558), (19, 107528), (20, 107495),

Gene: Lucky2013_236 Start: 107449, Stop: 107279, Start Num: 8
Candidate Starts for Lucky2013_236:
(Start: 8 @107449 has 35 MA's), (12, 107395), (14, 107374), (15, 107368), (16, 107353), (17, 107338), (19, 107323), (20, 107290),

Gene: MPlant7149_91 Start: 50406, Stop: 50594, Start Num: 7
Candidate Starts for MPlant7149_91:
(6, 50346), (Start: 7 @50406 has 42 MA's), (11, 50445), (15, 50502), (18, 50550), (19, 50553),

Gene: Marge_88 Start: 50288, Stop: 50476, Start Num: 7
Candidate Starts for Marge_88:
(Start: 5 @50210 has 5 MA's), (Start: 7 @50288 has 42 MA's), (11, 50327), (15, 50384), (18, 50432), (19, 50435),

Gene: Marsha_95 Start: 53472, Stop: 53660, Start Num: 7
Candidate Starts for Marsha_95:
(Start: 5 @53394 has 5 MA's), (Start: 7 @53472 has 42 MA's), (11, 53511), (15, 53568), (18, 53616), (19, 53619),

Gene: MiaZeal_249 Start: 109586, Stop: 109416, Start Num: 8
Candidate Starts for MiaZeal_249:
(Start: 8 @109586 has 35 MA's), (12, 109532), (14, 109511), (15, 109505), (16, 109490), (17, 109475), (19, 109460), (20, 109427),

Gene: Minerva_236 Start: 108644, Stop: 108474, Start Num: 8
Candidate Starts for Minerva_236:
(Start: 8 @108644 has 35 MA's), (12, 108590), (14, 108569), (15, 108563), (16, 108548), (17, 108533), (19, 108518), (20, 108485),

Gene: Monet_95 Start: 52421, Stop: 52609, Start Num: 7
Candidate Starts for Monet_95:
(Start: 5 @52343 has 5 MA's), (Start: 7 @52421 has 42 MA's), (11, 52460), (13, 52496), (15, 52517), (18, 52565), (19, 52568),

Gene: Mryolo_86 Start: 49530, Stop: 49718, Start Num: 7
Candidate Starts for Mryolo_86:
(Start: 7 @49530 has 42 MA's), (11, 49569), (13, 49605), (15, 49626), (19, 49677),

Gene: Mule_94 Start: 50492, Stop: 50680, Start Num: 7

Candidate Starts for Mule_94:

(Start: 5 @50414 has 5 MA's), (Start: 7 @50492 has 42 MA's), (11, 50531), (13, 50567), (15, 50588), (18, 50636), (19, 50639),

Gene: Nerujay_95 Start: 52483, Stop: 52671, Start Num: 7

Candidate Starts for Nerujay_95:

(Start: 5 @52405 has 5 MA's), (Start: 7 @52483 has 42 MA's), (11, 52522), (13, 52558), (15, 52579), (18, 52627), (19, 52630),

Gene: NihilNomen_239 Start: 109469, Stop: 109299, Start Num: 8

Candidate Starts for NihilNomen_239:

(1, 109667), (2, 109631), (Start: 8 @109469 has 35 MA's), (12, 109415), (14, 109394), (15, 109388), (16, 109373), (19, 109343), (20, 109310),

Gene: Odette_237 Start: 110839, Stop: 110669, Start Num: 8

Candidate Starts for Odette_237:

(Start: 8 @110839 has 35 MA's), (12, 110785), (14, 110764), (15, 110758), (16, 110743), (17, 110728), (19, 110713), (20, 110680),

Gene: Optimus_229 Start: 108240, Stop: 108070, Start Num: 8

Candidate Starts for Optimus_229:

(Start: 8 @108240 has 35 MA's), (12, 108186), (14, 108165), (15, 108159), (16, 108144), (19, 108114), (20, 108081),

Gene: Paraselene_89 Start: 50197, Stop: 50385, Start Num: 7

Candidate Starts for Paraselene_89:

(Start: 5 @50119 has 5 MA's), (Start: 7 @50197 has 42 MA's), (11, 50236), (15, 50293), (18, 50341), (19, 50344),

Gene: Parliament_92 Start: 52757, Stop: 52945, Start Num: 7

Candidate Starts for Parliament_92:

(Start: 5 @52679 has 5 MA's), (Start: 7 @52757 has 42 MA's), (11, 52796), (13, 52832), (15, 52853), (18, 52901), (19, 52904),

Gene: Perseus_92 Start: 52288, Stop: 52476, Start Num: 7

Candidate Starts for Perseus_92:

(Start: 5 @52210 has 5 MA's), (Start: 7 @52288 has 42 MA's), (11, 52327), (13, 52363), (15, 52384), (18, 52432), (19, 52435),

Gene: Phoebus_236 Start: 112956, Stop: 112786, Start Num: 8

Candidate Starts for Phoebus_236:

(Start: 8 @112956 has 35 MA's), (12, 112902), (14, 112881), (15, 112875), (17, 112845), (19, 112830), (20, 112797),

Gene: PhrostyMug_96 Start: 52584, Stop: 52850, Start Num: 5

Candidate Starts for PhrostyMug_96:

(Start: 5 @52584 has 5 MA's), (Start: 7 @52662 has 42 MA's), (11, 52701), (13, 52737), (15, 52758), (18, 52806), (19, 52809),

Gene: PinkPlastic_84 Start: 48627, Stop: 48815, Start Num: 7

Candidate Starts for PinkPlastic_84:

(Start: 5 @48549 has 5 MA's), (Start: 7 @48627 has 42 MA's), (11, 48666), (15, 48723), (18, 48771), (19, 48774),

Gene: Pippin_94 Start: 51088, Stop: 51246, Start Num: 10

Candidate Starts for Pippin_94:

(Start: 10 @51088 has 1 MA's), (15, 51154), (18, 51202), (19, 51205),

Gene: Porcelain_240 Start: 108396, Stop: 108226, Start Num: 8

Candidate Starts for Porcelain_240:

(Start: 8 @108396 has 35 MA's), (12, 108342), (14, 108321), (15, 108315), (16, 108300), (17, 108285), (19, 108270), (20, 108237),

Gene: Pound_226 Start: 108635, Stop: 108465, Start Num: 8

Candidate Starts for Pound_226:

(Start: 8 @108635 has 35 MA's), (12, 108581), (14, 108560), (15, 108554), (16, 108539), (19, 108509), (20, 108476),

Gene: Redno2_229 Start: 107065, Stop: 106895, Start Num: 8

Candidate Starts for Redno2_229:

(Start: 8 @107065 has 35 MA's), (12, 107011), (14, 106990), (15, 106984), (17, 106954), (19, 106939), (20, 106906),

Gene: RidgeCB_92 Start: 49870, Stop: 50058, Start Num: 7

Candidate Starts for RidgeCB_92:

(Start: 5 @49792 has 5 MA's), (Start: 7 @49870 has 42 MA's), (11, 49909), (15, 49966), (18, 50014), (19, 50017),

Gene: Sagefire_87 Start: 50489, Stop: 50677, Start Num: 7

Candidate Starts for Sagefire_87:

(Start: 5 @50411 has 5 MA's), (Start: 7 @50489 has 42 MA's), (11, 50528), (15, 50585), (18, 50633), (19, 50636),

Gene: Schatzie_230 Start: 109981, Stop: 109811, Start Num: 8

Candidate Starts for Schatzie_230:

(Start: 8 @109981 has 35 MA's), (12, 109927), (14, 109906), (15, 109900), (17, 109870), (19, 109855), (20, 109822),

Gene: SkiPole_101 Start: 52158, Stop: 52346, Start Num: 7

Candidate Starts for SkiPole_101:

(Start: 5 @52080 has 5 MA's), (Start: 7 @52158 has 42 MA's), (11, 52197), (15, 52254), (18, 52302), (19, 52305),

Gene: Smairt_99 Start: 53679, Stop: 53867, Start Num: 7

Candidate Starts for Smairt_99:

(Start: 5 @53601 has 5 MA's), (Start: 7 @53679 has 42 MA's), (11, 53718), (13, 53754), (15, 53775), (18, 53823), (19, 53826),

Gene: Solon_85 Start: 48499, Stop: 48687, Start Num: 7

Candidate Starts for Solon_85:

(Start: 5 @48421 has 5 MA's), (Start: 7 @48499 has 42 MA's), (11, 48538), (15, 48595), (18, 48643), (19, 48646),

Gene: Squint_237 Start: 109202, Stop: 109032, Start Num: 8

Candidate Starts for Squint_237:

(Start: 8 @109202 has 35 MA's), (12, 109148), (14, 109127), (15, 109121), (16, 109106), (17, 109091), (19, 109076), (20, 109043),

Gene: StewieG_89 Start: 48436, Stop: 48624, Start Num: 7

Candidate Starts for StewieG_89:

(Start: 5 @48358 has 5 MA's), (Start: 7 @48436 has 42 MA's), (11, 48475), (18, 48580),

Gene: Sumter_89 Start: 51678, Stop: 51866, Start Num: 7

Candidate Starts for Sumter_89:

(Start: 5 @51600 has 5 MA's), (Start: 7 @51678 has 42 MA's), (11, 51717), (13, 51753), (15, 51774), (18, 51822), (19, 51825),

Gene: Sunshine924_95 Start: 50380, Stop: 50568, Start Num: 7

Candidate Starts for Sunshine924_95:

(6, 50320), (Start: 7 @50380 has 42 MA's), (11, 50419), (15, 50476), (18, 50524), (19, 50527),

Gene: Superphikiman_236 Start: 108134, Stop: 107964, Start Num: 8

Candidate Starts for Superphikiman_236:

(Start: 8 @108134 has 35 MA's), (12, 108080), (14, 108059), (15, 108053), (16, 108038), (19, 108008), (20, 107975),

Gene: Tasp14_88 Start: 50361, Stop: 50627, Start Num: 5

Candidate Starts for Tasp14_88:

(Start: 5 @50361 has 5 MA's), (Start: 7 @50439 has 42 MA's), (11, 50478), (18, 50583), (19, 50586),

Gene: Thibault_212 Start: 104920, Stop: 104750, Start Num: 8

Candidate Starts for Thibault_212:

(3, 105046), (4, 105043), (Start: 8 @104920 has 35 MA's), (12, 104866), (14, 104845), (15, 104839), (16, 104824), (19, 104794), (20, 104761),

Gene: ThreeRngTarjay_237 Start: 112169, Stop: 111999, Start Num: 8

Candidate Starts for ThreeRngTarjay_237:

(Start: 8 @112169 has 35 MA's), (12, 112115), (14, 112094), (15, 112088), (17, 112058), (19, 112043), (20, 112010),

Gene: Trouble_92 Start: 51117, Stop: 51305, Start Num: 7

Candidate Starts for Trouble_92:

(Start: 5 @51039 has 5 MA's), (Start: 7 @51117 has 42 MA's), (11, 51156), (13, 51192), (15, 51213), (18, 51261), (19, 51264),

Gene: Violet_89 Start: 51521, Stop: 51709, Start Num: 7

Candidate Starts for Violet_89:

(Start: 5 @51443 has 5 MA's), (Start: 7 @51521 has 42 MA's), (11, 51560), (15, 51617), (18, 51665),

Gene: Wanda_238 Start: 108590, Stop: 108420, Start Num: 8

Candidate Starts for Wanda_238:

(Start: 8 @108590 has 35 MA's), (14, 108515), (15, 108509), (17, 108479), (19, 108464), (20, 108431),

Gene: Yeet_232 Start: 110085, Stop: 109915, Start Num: 8

Candidate Starts for Yeet_232:

(Start: 8 @110085 has 35 MA's), (12, 110031), (14, 110010), (15, 110004), (17, 109974), (19, 109959), (20, 109926),

Gene: Zelink_231 Start: 109673, Stop: 109503, Start Num: 8

Candidate Starts for Zelink_231:

(Start: 8 @109673 has 35 MA's), (14, 109598), (15, 109592), (17, 109562), (19, 109547), (20, 109514),

Gene: Zeuska_93 Start: 52658, Stop: 52924, Start Num: 5

Candidate Starts for Zeuska_93:

(Start: 5 @52658 has 5 MA's), (Start: 7 @52736 has 42 MA's), (11, 52775), (15, 52832), (18, 52880), (19, 52883),