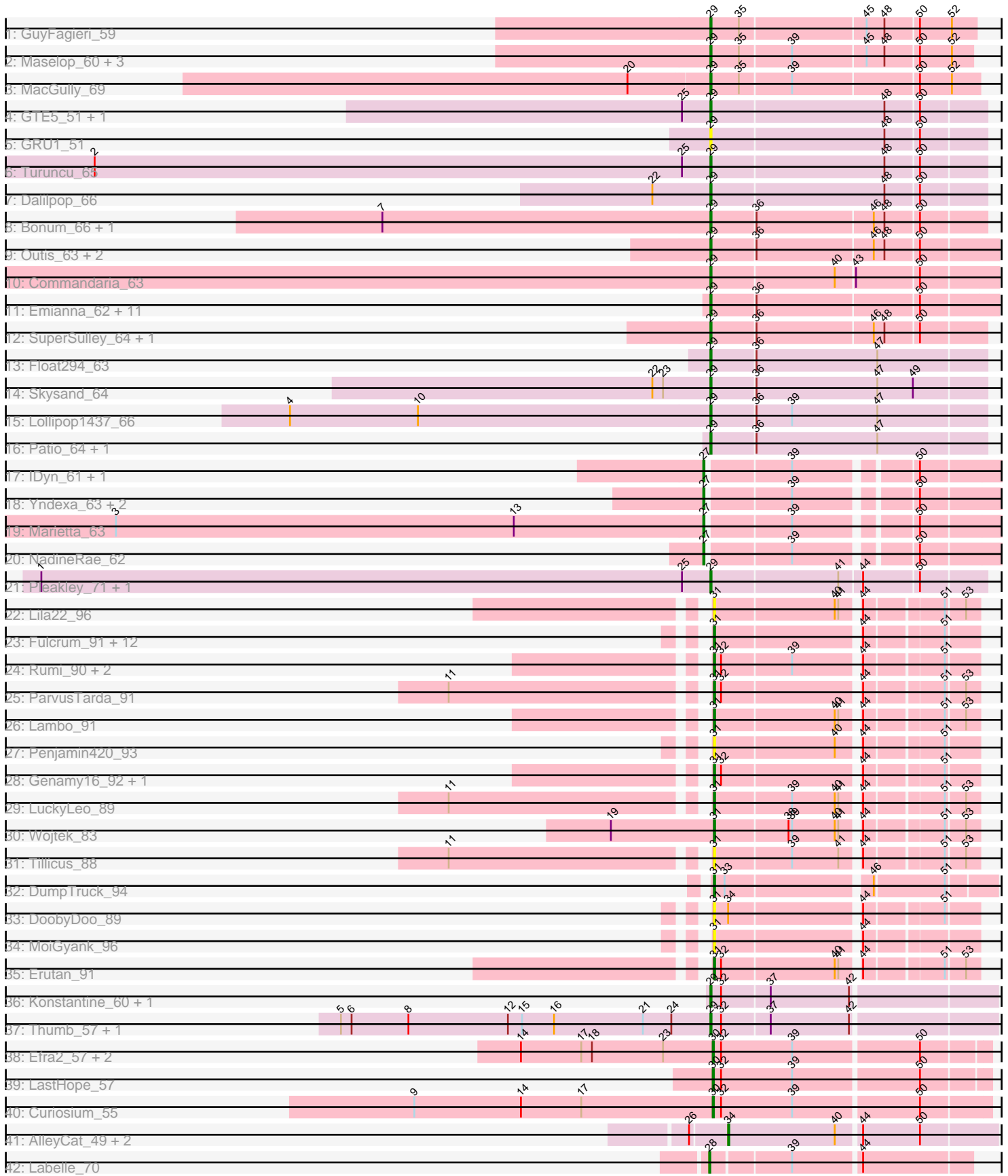


Pham 156303



Note: Tracks are now grouped by subcluster and scaled. Switching in subcluster is indicated by changes in track color. Track scale is now set by default to display the region 30 bp upstream of start 1 to 30 bp downstream of the last possible start. If this default region is judged to be packed too tightly with annotated starts, the track will be further scaled to only show that region of the ORF with annotated starts. This action will be indicated by adding "Zoomed" to the title. For starts, yellow indicates the location of called starts comprised solely of Glimmer/GeneMark auto-annotations, green indicates the location of called starts with at least 1 manual gene annotation.

Pham 156303 Report

This analysis was run 04/12/24 on database version 558.

Pham number 156303 has 87 members, 9 are drafts.

Phages represented in each track:

- Track 1 : GuyFagieri_59
- Track 2 : Maselop_60, Apiary_60, Braxoaddie_60, Polyuyuki_60
- Track 3 : MacGully_69
- Track 4 : GTE5_51, Flapper_65
- Track 5 : GRU1_51
- Track 6 : Turuncu_65
- Track 7 : Dalilpop_66
- Track 8 : Bonum_66, Kabluna_65
- Track 9 : Outis_63, StarStruck_63, MerCougar_64
- Track 10 : Commandaria_63
- Track 11 : Emianna_62, GTE8_51, Wheezy_62, Jifall16_61, Tracker_62, Arti_61, Foxboro_63, NatB6_62, Kurt_62, GrootJr_64, KidneyBean_62, NovumRegina_62
- Track 12 : SuperSulley_64, Buggaboo_64
- Track 13 : Float294_63
- Track 14 : Skysand_64
- Track 15 : Lollipop1437_66
- Track 16 : Patio_64, Ennea_69
- Track 17 : IDyn_61, WhoseManz_62
- Track 18 : Yndexa_63, Sukkupi_63, BiPauneto_65
- Track 19 : Marietta_63
- Track 20 : NadineRae_62
- Track 21 : Pleakley_71, Fury_71
- Track 22 : Lila22_96
- Track 23 : Fulcrum_91, OtterstedtS21_92, Gibbin_93, Patos_96, Jalebi_91, Sampudon_93, Sadboi_91, GretelLyn_91, Zany_90, GOATification_91, Yikes_92, BirthdayBoy_94, NorManre_96
- Track 24 : Rumi_90, Alyssamiracle_92, NovaSharks_91
- Track 25 : ParvusTarda_91
- Track 26 : Lambo_91
- Track 27 : Penjamin420_93
- Track 28 : Genamy16_92, Avian_90
- Track 29 : LuckyLeo_89
- Track 30 : Wojtek_83
- Track 31 : Tillicus_88
- Track 32 : DumpTruck_94
- Track 33 : DoobyDoo_89
- Track 34 : MoiGyank_96

- Track 35 : Erutan_91
- Track 36 : Konstantine_60, Cborch11_58
- Track 37 : Thumb_57, Oaker_56
- Track 38 : Efra2_57, Yunkel11_56, Guanica15_56
- Track 39 : LastHope_57
- Track 40 : Curiosium_55
- Track 41 : AlleyCat_49, Psycho_47, Dadosky_49
- Track 42 : Labelle_70

Summary of Final Annotations (See graph section above for start numbers):

The start number called the most often in the published annotations is 29, it was called in 39 of the 78 non-draft genes in the pham.

Genes that call this "Most Annotated" start:

- Apiary_60, Arti_61, Bonum_66, Braxoaddie_60, Buggaboo_64, Cborch11_58, Commandaria_63, Dalilpop_66, Emianna_62, Ennea_69, Flapper_65, Float294_63, Foxboro_63, Fury_71, GRU1_51, GTE5_51, GTE8_51, GrootJr_64, GuyFagieri_59, Jifall16_61, Kabluna_65, KidneyBean_62, Konstantine_60, Kurt_62, Lollipop1437_66, MacGully_69, Maselop_60, MerCougar_64, NatB6_62, NovumRegina_62, Oaker_56, Outis_63, Patio_64, Pleakley_71, Polyyuki_60, Skysand_64, StarStruck_63, SuperSulley_64, Thumb_57, Tracker_62, Turuncu_65, Wheezy_62,

Genes that have the "Most Annotated" start but do not call it:

-

Genes that do not have the "Most Annotated" start:

- AlleyCat_49, Alyssmiracle_92, Avian_90, BiPauneto_65, BirthdayBoy_94, Curiosium_55, Dadosky_49, DoobyDoo_89, DumpTruck_94, Efra2_57, Erutan_91, Fulcrum_91, GOATification_91, Genamy16_92, Gibbin_93, GretelLyn_91, Guanica15_56, IDyn_61, Jalebi_91, Labelle_70, Lambo_91, LastHope_57, Lila22_96, LuckyLeo_89, Marietta_63, MoiGyank_96, NadineRae_62, NorManre_96, NovaSharks_91, OtterstedtS21_92, ParvusTarda_91, Patos_96, Penjamin420_93, Psycho_47, Rumi_90, Sadboi_91, Sampudon_93, Sukkupi_63, Tillicus_88, WhoseManz_62, Wojtek_83, Yikes_92, Yndexa_63, Yunkel11_56, Zany_90,

Summary by start number:

Start 27:

- Found in 7 of 87 (8.0%) of genes in pham
- Manual Annotations of this start: 7 of 78
- Called 100.0% of time when present
- Phage (with cluster) where this start called: BiPauneto_65 (CR4), IDyn_61 (CR4), Marietta_63 (CR4), NadineRae_62 (CR4), Sukkupi_63 (CR4), WhoseManz_62 (CR4), Yndexa_63 (CR4),

Start 28:

- Found in 1 of 87 (1.1%) of genes in pham
- Manual Annotations of this start: 1 of 78

- Called 100.0% of time when present
- Phage (with cluster) where this start called: Labelle_70 (U),

Start 29:

- Found in 42 of 87 (48.3%) of genes in pham
- Manual Annotations of this start: 39 of 78
- Called 100.0% of time when present
- Phage (with cluster) where this start called: Apiary_60 (CR), Arti_61 (CR2), Bonum_66 (CR2), Braxoaddie_60 (CR), Buggaboo_64 (CR2), Cborch11_58 (H1), Commandaria_63 (CR2), Dalilpop_66 (CR1), Emianna_62 (CR2), Ennea_69 (CR3), Flapper_65 (CR1), Float294_63 (CR3), Foxboro_63 (CR2), Fury_71 (CR5), GRU1_51 (CR1), GTE5_51 (CR1), GTE8_51 (CR2), GrootJr_64 (CR2), GuyFagieri_59 (CR), Jifall16_61 (CR2), Kabluna_65 (CR2), KidneyBean_62 (CR2), Konstantine_60 (H1), Kurt_62 (CR2), Lollipop1437_66 (CR3), MacGully_69 (CR), Maselop_60 (CR), MerCougar_64 (CR2), NatB6_62 (CR2), NovumRegina_62 (CR2), Oaker_56 (H1), Outis_63 (CR2), Patio_64 (CR3), Pleakley_71 (CR5), Polyyuki_60 (CR), Skysand_64 (CR3), StarStruck_63 (CR2), SuperSulley_64 (CR2), Thumb_57 (H1), Tracker_62 (CR2), Turuncu_65 (CR1), Wheezy_62 (CR2),

Start 30:

- Found in 5 of 87 (5.7%) of genes in pham
- Manual Annotations of this start: 5 of 78
- Called 100.0% of time when present
- Phage (with cluster) where this start called: Curiosium_55 (K1), Efra2_57 (K1), Guanica15_56 (K1), LastHope_57 (K1), Yunkel11_56 (K1),

Start 31:

- Found in 29 of 87 (33.3%) of genes in pham
- Manual Annotations of this start: 23 of 78
- Called 100.0% of time when present
- Phage (with cluster) where this start called: Alyssamiracle_92 (DV), Avian_90 (DV), BirthdayBoy_94 (DV), DoobyDoo_89 (DV), DumpTruck_94 (DV), Erutan_91 (DV), Fulcrum_91 (DV), GOATification_91 (DV), Genamy16_92 (DV), Gibbin_93 (DV), GretelLyn_91 (DV), Jalebi_91 (DV), Lambo_91 (DV), Lila22_96 (DV), LuckyLeo_89 (DV), MoiGyank_96 (DV), NorManre_96 (DV), NovaSharks_91 (DV), OtterstedtS21_92 (DV), ParvusTarda_91 (DV), Patos_96 (DV), Penjamin420_93 (DV), Rumi_90 (DV), Sadboi_91 (DV), Sampudon_93 (DV), Tillicus_88 (DV), Wojtek_83 (DV), Yikes_92 (DV), Zany_90 (DV),

Start 34:

- Found in 4 of 87 (4.6%) of genes in pham
- Manual Annotations of this start: 3 of 78
- Called 75.0% of time when present
- Phage (with cluster) where this start called: AlleyCat_49 (K5), Dadosky_49 (K5), Psycho_47 (K5),

Summary by clusters:

There are 11 clusters represented in this pham: CR2, CR3, CR1, CR4, CR5, H1, K1, U, K5, DV, CR,

Info for manual annotations of cluster CR:

- Start number 29 was manually annotated 6 times for cluster CR.

Info for manual annotations of cluster CR1:

- Start number 29 was manually annotated 3 times for cluster CR1.

Info for manual annotations of cluster CR2:

- Start number 29 was manually annotated 19 times for cluster CR2.

Info for manual annotations of cluster CR3:

- Start number 29 was manually annotated 5 times for cluster CR3.

Info for manual annotations of cluster CR4:

- Start number 27 was manually annotated 7 times for cluster CR4.

Info for manual annotations of cluster CR5:

- Start number 29 was manually annotated 2 times for cluster CR5.

Info for manual annotations of cluster DV:

- Start number 31 was manually annotated 23 times for cluster DV.

Info for manual annotations of cluster H1:

- Start number 29 was manually annotated 4 times for cluster H1.

Info for manual annotations of cluster K1:

- Start number 30 was manually annotated 5 times for cluster K1.

Info for manual annotations of cluster K5:

- Start number 34 was manually annotated 3 times for cluster K5.

Info for manual annotations of cluster U:

- Start number 28 was manually annotated 1 time for cluster U.

Gene Information:

Gene: AlleyCat_49 Start: 36887, Stop: 37105, Start Num: 34

Candidate Starts for AlleyCat_49:

(26, 36857), (Start: 34 @36887 has 3 MA's), (40, 36977), (44, 36995), (50, 37043),

Gene: Alyssamiracle_92 Start: 62607, Stop: 62807, Start Num: 31

Candidate Starts for Alyssamiracle_92:

(Start: 31 @62607 has 23 MA's), (32, 62613), (39, 62670), (44, 62721), (51, 62781),

Gene: Apiary_60 Start: 45998, Stop: 45786, Start Num: 29

Candidate Starts for Apiary_60:

(Start: 29 @45998 has 39 MA's), (35, 45974), (39, 45932), (45, 45872), (48, 45857), (50, 45830), (52, 45803),

Gene: Arti_61 Start: 48483, Stop: 48253, Start Num: 29

Candidate Starts for Arti_61:

(Start: 29 @48483 has 39 MA's), (36, 48447), (50, 48315),

Gene: Avian_90 Start: 62369, Stop: 62569, Start Num: 31

Candidate Starts for Avian_90:
(Start: 31 @62369 has 23 MA's), (32, 62375), (44, 62483), (51, 62543),

Gene: BiPauneto_65 Start: 48080, Stop: 47850, Start Num: 27
Candidate Starts for BiPauneto_65:
(Start: 27 @48080 has 7 MA's), (39, 48014), (50, 47924),

Gene: BirthdayBoy_94 Start: 64659, Stop: 64859, Start Num: 31
Candidate Starts for BirthdayBoy_94:
(Start: 31 @64659 has 23 MA's), (44, 64773), (51, 64833),

Gene: Bonum_66 Start: 49270, Stop: 49049, Start Num: 29
Candidate Starts for Bonum_66:
(7, 49546), (Start: 29 @49270 has 39 MA's), (36, 49234), (46, 49138), (48, 49129), (50, 49102),

Gene: Braxoaddie_60 Start: 45987, Stop: 45775, Start Num: 29
Candidate Starts for Braxoaddie_60:
(Start: 29 @45987 has 39 MA's), (35, 45963), (39, 45921), (45, 45861), (48, 45846), (50, 45819), (52, 45792),

Gene: Buggaboo_64 Start: 49827, Stop: 49606, Start Num: 29
Candidate Starts for Buggaboo_64:
(Start: 29 @49827 has 39 MA's), (36, 49791), (46, 49695), (48, 49686), (50, 49659),

Gene: Cborch11_58 Start: 44408, Stop: 44638, Start Num: 29
Candidate Starts for Cborch11_58:
(Start: 29 @44408 has 39 MA's), (32, 44417), (37, 44456), (42, 44522),

Gene: Commandaria_63 Start: 49702, Stop: 49472, Start Num: 29
Candidate Starts for Commandaria_63:
(Start: 29 @49702 has 39 MA's), (40, 49600), (43, 49585), (50, 49534),

Gene: Curiosium_55 Start: 37814, Stop: 38038, Start Num: 30
Candidate Starts for Curiosium_55:
(9, 37562), (14, 37652), (17, 37703), (Start: 30 @37814 has 5 MA's), (32, 37820), (39, 37880), (50, 37982),

Gene: Dadosky_49 Start: 36889, Stop: 37107, Start Num: 34
Candidate Starts for Dadosky_49:
(26, 36859), (Start: 34 @36889 has 3 MA's), (40, 36979), (44, 36997), (50, 37045),

Gene: Dalilpop_66 Start: 50690, Stop: 50466, Start Num: 29
Candidate Starts for Dalilpop_66:
(22, 50738), (Start: 29 @50690 has 39 MA's), (48, 50546), (50, 50519),

Gene: DoobyDoo_89 Start: 62959, Stop: 63159, Start Num: 31
Candidate Starts for DoobyDoo_89:
(Start: 31 @62959 has 23 MA's), (Start: 34 @62971 has 3 MA's), (44, 63073), (51, 63133),

Gene: DumpTruck_94 Start: 64144, Stop: 64362, Start Num: 31
Candidate Starts for DumpTruck_94:
(Start: 31 @64144 has 23 MA's), (33, 64153), (46, 64267), (51, 64324),

Gene: Efra2_57 Start: 38957, Stop: 39178, Start Num: 30
Candidate Starts for Efra2_57:
(14, 38795), (17, 38846), (18, 38855), (23, 38915), (Start: 30 @38957 has 5 MA's), (32, 38963), (39, 39023), (50, 39125),

Gene: Emianna_62 Start: 49726, Stop: 49496, Start Num: 29
Candidate Starts for Emianna_62:
(Start: 29 @49726 has 39 MA's), (36, 49690), (50, 49558),

Gene: Ennea_69 Start: 50721, Stop: 50494, Start Num: 29
Candidate Starts for Ennea_69:
(Start: 29 @50721 has 39 MA's), (36, 50685), (47, 50583),

Gene: Erutan_91 Start: 64022, Stop: 64222, Start Num: 31
Candidate Starts for Erutan_91:
(Start: 31 @64022 has 23 MA's), (32, 64028), (40, 64121), (41, 64124), (44, 64136), (51, 64196), (53, 64211),

Gene: Flapper_65 Start: 49880, Stop: 49656, Start Num: 29
Candidate Starts for Flapper_65:
(25, 49904), (Start: 29 @49880 has 39 MA's), (48, 49736), (50, 49709),

Gene: Float294_63 Start: 50556, Stop: 50329, Start Num: 29
Candidate Starts for Float294_63:
(Start: 29 @50556 has 39 MA's), (36, 50520), (47, 50418),

Gene: Foxboro_63 Start: 50235, Stop: 50005, Start Num: 29
Candidate Starts for Foxboro_63:
(Start: 29 @50235 has 39 MA's), (36, 50199), (50, 50067),

Gene: Fulcrum_91 Start: 64168, Stop: 64368, Start Num: 31
Candidate Starts for Fulcrum_91:
(Start: 31 @64168 has 23 MA's), (44, 64282), (51, 64342),

Gene: Fury_71 Start: 48990, Stop: 48769, Start Num: 29
Candidate Starts for Fury_71:
(1, 49554), (25, 49014), (Start: 29 @48990 has 39 MA's), (41, 48885), (44, 48867), (50, 48822),

Gene: GOATification_91 Start: 64168, Stop: 64368, Start Num: 31
Candidate Starts for GOATification_91:
(Start: 31 @64168 has 23 MA's), (44, 64282), (51, 64342),

Gene: GRU1_51 Start: 41731, Stop: 41507, Start Num: 29
Candidate Starts for GRU1_51:
(Start: 29 @41731 has 39 MA's), (48, 41587), (50, 41560),

Gene: GTE5_51 Start: 42757, Stop: 42533, Start Num: 29
Candidate Starts for GTE5_51:
(25, 42781), (Start: 29 @42757 has 39 MA's), (48, 42613), (50, 42586),

Gene: GTE8_51 Start: 42940, Stop: 42710, Start Num: 29
Candidate Starts for GTE8_51:
(Start: 29 @42940 has 39 MA's), (36, 42904), (50, 42772),

Gene: Genamy16_92 Start: 62656, Stop: 62856, Start Num: 31
Candidate Starts for Genamy16_92:
(Start: 31 @62656 has 23 MA's), (32, 62662), (44, 62770), (51, 62830),

Gene: Gibbin_93 Start: 64345, Stop: 64545, Start Num: 31
Candidate Starts for Gibbin_93:
(Start: 31 @64345 has 23 MA's), (44, 64459), (51, 64519),

Gene: Gretellyn_91 Start: 64171, Stop: 64371, Start Num: 31
Candidate Starts for Gretellyn_91:
(Start: 31 @64171 has 23 MA's), (44, 64285), (51, 64345),

Gene: GrootJr_64 Start: 49108, Stop: 48878, Start Num: 29
Candidate Starts for GrootJr_64:
(Start: 29 @49108 has 39 MA's), (36, 49072), (50, 48940),

Gene: Guanica15_56 Start: 38702, Stop: 38920, Start Num: 30
Candidate Starts for Guanica15_56:
(14, 38540), (17, 38591), (18, 38600), (23, 38660), (Start: 30 @38702 has 5 MA's), (32, 38708), (39, 38768), (50, 38870),

Gene: GuyFagieri_59 Start: 46181, Stop: 45966, Start Num: 29
Candidate Starts for GuyFagieri_59:
(Start: 29 @46181 has 39 MA's), (35, 46157), (45, 46055), (48, 46040), (50, 46013), (52, 45986),

Gene: IDyn_61 Start: 46010, Stop: 45780, Start Num: 27
Candidate Starts for IDyn_61:
(Start: 27 @46010 has 7 MA's), (39, 45944), (50, 45854),

Gene: Jalebi_91 Start: 65112, Stop: 65312, Start Num: 31
Candidate Starts for Jalebi_91:
(Start: 31 @65112 has 23 MA's), (44, 65226), (51, 65286),

Gene: Jifall16_61 Start: 49380, Stop: 49150, Start Num: 29
Candidate Starts for Jifall16_61:
(Start: 29 @49380 has 39 MA's), (36, 49344), (50, 49212),

Gene: Kabluna_65 Start: 48605, Stop: 48384, Start Num: 29
Candidate Starts for Kabluna_65:
(7, 48881), (Start: 29 @48605 has 39 MA's), (36, 48569), (46, 48473), (48, 48464), (50, 48437),

Gene: KidneyBean_62 Start: 49504, Stop: 49274, Start Num: 29
Candidate Starts for KidneyBean_62:
(Start: 29 @49504 has 39 MA's), (36, 49468), (50, 49336),

Gene: Konstantine_60 Start: 45201, Stop: 45431, Start Num: 29
Candidate Starts for Konstantine_60:
(Start: 29 @45201 has 39 MA's), (32, 45210), (37, 45249), (42, 45315),

Gene: Kurt_62 Start: 49741, Stop: 49511, Start Num: 29
Candidate Starts for Kurt_62:
(Start: 29 @49741 has 39 MA's), (36, 49705), (50, 49573),

Gene: Labelle_70 Start: 46820, Stop: 47026, Start Num: 28

Candidate Starts for Labelle_70:

(Start: 28 @46820 has 1 MA's), (39, 46883), (44, 46937),

Gene: Lambo_91 Start: 64248, Stop: 64448, Start Num: 31

Candidate Starts for Lambo_91:

(Start: 31 @64248 has 23 MA's), (40, 64347), (41, 64350), (44, 64362), (51, 64422), (53, 64437),

Gene: LastHope_57 Start: 38346, Stop: 38567, Start Num: 30

Candidate Starts for LastHope_57:

(Start: 30 @38346 has 5 MA's), (32, 38352), (39, 38412), (50, 38514),

Gene: Lila22_96 Start: 64603, Stop: 64803, Start Num: 31

Candidate Starts for Lila22_96:

(Start: 31 @64603 has 23 MA's), (40, 64702), (41, 64705), (44, 64717), (51, 64777), (53, 64792),

Gene: Lollipop1437_66 Start: 50521, Stop: 50294, Start Num: 29

Candidate Starts for Lollipop1437_66:

(4, 50875), (10, 50767), (Start: 29 @50521 has 39 MA's), (36, 50485), (39, 50455), (47, 50383),

Gene: LuckyLeo_89 Start: 63837, Stop: 64037, Start Num: 31

Candidate Starts for LuckyLeo_89:

(11, 63636), (Start: 31 @63837 has 23 MA's), (39, 63900), (40, 63936), (41, 63939), (44, 63951), (51, 64011), (53, 64026),

Gene: MacGully_69 Start: 49142, Stop: 48924, Start Num: 29

Candidate Starts for MacGully_69:

(20, 49208), (Start: 29 @49142 has 39 MA's), (35, 49118), (39, 49076), (50, 48974), (52, 48947),

Gene: Marietta_63 Start: 46140, Stop: 45910, Start Num: 27

Candidate Starts for Marietta_63:

(3, 46635), (13, 46299), (Start: 27 @46140 has 7 MA's), (39, 46074), (50, 45984),

Gene: Maselop_60 Start: 46021, Stop: 45809, Start Num: 29

Candidate Starts for Maselop_60:

(Start: 29 @46021 has 39 MA's), (35, 45997), (39, 45955), (45, 45895), (48, 45880), (50, 45853), (52, 45826),

Gene: MerCougar_64 Start: 50026, Stop: 49796, Start Num: 29

Candidate Starts for MerCougar_64:

(Start: 29 @50026 has 39 MA's), (36, 49990), (46, 49894), (48, 49885), (50, 49858),

Gene: MoiGyank_96 Start: 64426, Stop: 64626, Start Num: 31

Candidate Starts for MoiGyank_96:

(Start: 31 @64426 has 23 MA's), (44, 64540),

Gene: NadineRae_62 Start: 45743, Stop: 45513, Start Num: 27

Candidate Starts for NadineRae_62:

(Start: 27 @45743 has 7 MA's), (39, 45677), (50, 45587),

Gene: NatB6_62 Start: 48798, Stop: 48568, Start Num: 29

Candidate Starts for NatB6_62:

(Start: 29 @48798 has 39 MA's), (36, 48762), (50, 48630),

Gene: NorManre_96 Start: 65444, Stop: 65644, Start Num: 31

Candidate Starts for NorManre_96:

(Start: 31 @65444 has 23 MA's), (44, 65558), (51, 65618),

Gene: NovaSharks_91 Start: 62356, Stop: 62556, Start Num: 31

Candidate Starts for NovaSharks_91:

(Start: 31 @62356 has 23 MA's), (32, 62362), (39, 62419), (44, 62470), (51, 62530),

Gene: NovumRegina_62 Start: 49107, Stop: 48877, Start Num: 29

Candidate Starts for NovumRegina_62:

(Start: 29 @49107 has 39 MA's), (36, 49071), (50, 48939),

Gene: Oaker_56 Start: 44662, Stop: 44892, Start Num: 29

Candidate Starts for Oaker_56:

(5, 44350), (6, 44359), (8, 44407), (12, 44491), (15, 44503), (16, 44530), (21, 44605), (24, 44629),

(Start: 29 @44662 has 39 MA's), (32, 44671), (37, 44710), (42, 44776),

Gene: OtterstedtS21_92 Start: 64255, Stop: 64455, Start Num: 31

Candidate Starts for OtterstedtS21_92:

(Start: 31 @64255 has 23 MA's), (44, 64369), (51, 64429),

Gene: Outis_63 Start: 49539, Stop: 49309, Start Num: 29

Candidate Starts for Outis_63:

(Start: 29 @49539 has 39 MA's), (36, 49503), (46, 49407), (48, 49398), (50, 49371),

Gene: ParvusTarda_91 Start: 63529, Stop: 63729, Start Num: 31

Candidate Starts for ParvusTarda_91:

(11, 63328), (Start: 31 @63529 has 23 MA's), (32, 63535), (44, 63643), (51, 63703), (53, 63718),

Gene: Patio_64 Start: 49476, Stop: 49249, Start Num: 29

Candidate Starts for Patio_64:

(Start: 29 @49476 has 39 MA's), (36, 49440), (47, 49338),

Gene: Patos_96 Start: 65443, Stop: 65643, Start Num: 31

Candidate Starts for Patos_96:

(Start: 31 @65443 has 23 MA's), (44, 65557), (51, 65617),

Gene: Penjamin420_93 Start: 64175, Stop: 64375, Start Num: 31

Candidate Starts for Penjamin420_93:

(Start: 31 @64175 has 23 MA's), (40, 64274), (44, 64289), (51, 64349),

Gene: Pleakley_71 Start: 48991, Stop: 48770, Start Num: 29

Candidate Starts for Pleakley_71:

(1, 49555), (25, 49015), (Start: 29 @48991 has 39 MA's), (41, 48886), (44, 48868), (50, 48823),

Gene: Polyzuki_60 Start: 46010, Stop: 45798, Start Num: 29

Candidate Starts for Polyzuki_60:

(Start: 29 @46010 has 39 MA's), (35, 45986), (39, 45944), (45, 45884), (48, 45869), (50, 45842), (52, 45815),

Gene: Psycho_47 Start: 36886, Stop: 37104, Start Num: 34

Candidate Starts for Psycho_47:

(26, 36856), (Start: 34 @36886 has 3 MA's), (40, 36976), (44, 36994), (50, 37042),

Gene: Rumi_90 Start: 61951, Stop: 62151, Start Num: 31

Candidate Starts for Rumi_90:

(Start: 31 @61951 has 23 MA's), (32, 61957), (39, 62014), (44, 62065), (51, 62125),

Gene: Sadboi_91 Start: 64051, Stop: 64251, Start Num: 31

Candidate Starts for Sadboi_91:

(Start: 31 @64051 has 23 MA's), (44, 64165), (51, 64225),

Gene: Sampudon_93 Start: 65111, Stop: 65311, Start Num: 31

Candidate Starts for Sampudon_93:

(Start: 31 @65111 has 23 MA's), (44, 65225), (51, 65285),

Gene: Skysand_64 Start: 49975, Stop: 49748, Start Num: 29

Candidate Starts for Skysand_64:

(22, 50023), (23, 50014), (Start: 29 @49975 has 39 MA's), (36, 49939), (47, 49837), (49, 49807),

Gene: StarStruck_63 Start: 49539, Stop: 49309, Start Num: 29

Candidate Starts for StarStruck_63:

(Start: 29 @49539 has 39 MA's), (36, 49503), (46, 49407), (48, 49398), (50, 49371),

Gene: Sukkupi_63 Start: 47971, Stop: 47741, Start Num: 27

Candidate Starts for Sukkupi_63:

(Start: 27 @47971 has 7 MA's), (39, 47905), (50, 47815),

Gene: SuperSulley_64 Start: 49827, Stop: 49606, Start Num: 29

Candidate Starts for SuperSulley_64:

(Start: 29 @49827 has 39 MA's), (36, 49791), (46, 49695), (48, 49686), (50, 49659),

Gene: Thumb_57 Start: 44402, Stop: 44632, Start Num: 29

Candidate Starts for Thumb_57:

(5, 44090), (6, 44099), (8, 44147), (12, 44231), (15, 44243), (16, 44270), (21, 44345), (24, 44369),

(Start: 29 @44402 has 39 MA's), (32, 44411), (37, 44450), (42, 44516),

Gene: Tillicus_88 Start: 63638, Stop: 63838, Start Num: 31

Candidate Starts for Tillicus_88:

(11, 63437), (Start: 31 @63638 has 23 MA's), (39, 63701), (41, 63740), (44, 63752), (51, 63812), (53, 63827),

Gene: Tracker_62 Start: 48549, Stop: 48319, Start Num: 29

Candidate Starts for Tracker_62:

(Start: 29 @48549 has 39 MA's), (36, 48513), (50, 48381),

Gene: Turuncu_65 Start: 49569, Stop: 49345, Start Num: 29

Candidate Starts for Turuncu_65:

(2, 50088), (25, 49593), (Start: 29 @49569 has 39 MA's), (48, 49425), (50, 49398),

Gene: Wheezy_62 Start: 48757, Stop: 48527, Start Num: 29

Candidate Starts for Wheezy_62:

(Start: 29 @48757 has 39 MA's), (36, 48721), (50, 48589),

Gene: WhoseManz_62 Start: 45753, Stop: 45523, Start Num: 27
Candidate Starts for WhoseManz_62:
(Start: 27 @45753 has 7 MA's), (39, 45687), (50, 45597),

Gene: Wojtek_83 Start: 64184, Stop: 64384, Start Num: 31
Candidate Starts for Wojtek_83:
(19, 64097), (Start: 31 @64184 has 23 MA's), (38, 64244), (39, 64247), (40, 64283), (41, 64286), (44, 64298), (51, 64358), (53, 64373),

Gene: Yikes_92 Start: 64716, Stop: 64916, Start Num: 31
Candidate Starts for Yikes_92:
(Start: 31 @64716 has 23 MA's), (44, 64830), (51, 64890),

Gene: Yndexa_63 Start: 47971, Stop: 47741, Start Num: 27
Candidate Starts for Yndexa_63:
(Start: 27 @47971 has 7 MA's), (39, 47905), (50, 47815),

Gene: Yunkel11_56 Start: 38701, Stop: 38919, Start Num: 30
Candidate Starts for Yunkel11_56:
(14, 38539), (17, 38590), (18, 38599), (23, 38659), (Start: 30 @38701 has 5 MA's), (32, 38707), (39, 38767), (50, 38869),

Gene: Zany_90 Start: 64855, Stop: 65055, Start Num: 31
Candidate Starts for Zany_90:
(Start: 31 @64855 has 23 MA's), (44, 64969), (51, 65029),