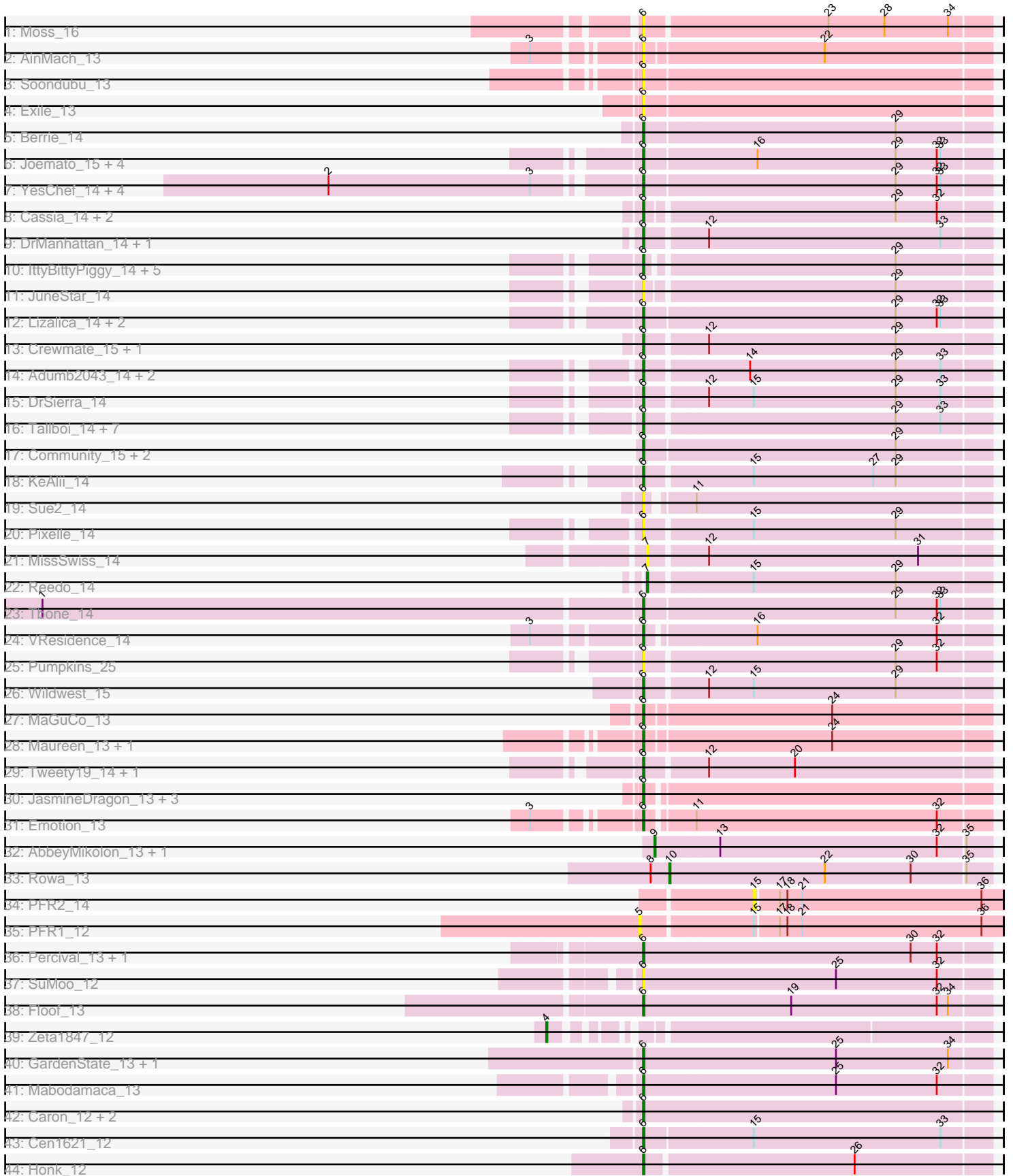


Pham 156308



Note: Tracks are now grouped by subcluster and scaled. Switching in subcluster is indicated by changes in track color. Track scale is now set by default to display the region 30 bp upstream of start 1 to 30 bp downstream of the last possible start. If this default region is judged to be packed too tightly with annotated starts, the track will be further scaled to only show that region of the ORF with annotated starts. This action will be indicated by adding "Zoomed" to the title. For starts, yellow indicates the location of called starts comprised solely of Glimmer/GeneMark auto-annotations, green indicates the location of called starts with at least 1 manual gene annotation.

Pham 156308 Report

This analysis was run 04/12/24 on database version 558.

Pham number 156308 has 84 members, 28 are drafts.

Phages represented in each track:

- Track 1 : Moss_16
- Track 2 : AinMach_13
- Track 3 : Soondubu_13
- Track 4 : Exile_13
- Track 5 : Berrie_14
- Track 6 : Joemato_15, JohnDoe_14, Cyan_14, Simpson_15, Kaylissa_14
- Track 7 : YesChef_14, AGrandiflora_14, Tutumahutu_14, Lego_14, Powerpuff_14
- Track 8 : Cassia_14, Yang_14, TforTroy_14
- Track 9 : DrManhattan_14, Adolin_15
- Track 10 : IttyBittyPiggy_14, Iter_14, Tian_14, Phives_15, Amyev_14, Ascela_14
- Track 11 : JuneStar_14
- Track 12 : Lizalica_14, Mudpuppy_14, Warda_14
- Track 13 : Crewmate_15, ObiToo_14
- Track 14 : Adumb2043_14, Turab_14, AEgle_14
- Track 15 : DrSierra_14
- Track 16 : Tallboi_14, Elezi_14, Nitro_14, Niobe_14, Jstan_14, Eraser_14, Asa16_14, London_14
- Track 17 : Community_15, Janeemi_15, Tuck_15
- Track 18 : KeAlii_14
- Track 19 : Sue2_14
- Track 20 : Pixelle_14
- Track 21 : MissSwiss_14
- Track 22 : Reedo_14
- Track 23 : Tbone_14
- Track 24 : VResidence_14
- Track 25 : Pumpkins_25
- Track 26 : Wildwest_15
- Track 27 : MaGuCo_13
- Track 28 : Maureen_13, Liebe_13
- Track 29 : Tweety19_14, Snek_14
- Track 30 : JasmineDragon_13, VroomVroom_13, MiniMommy_12, ShakeItOph_13
- Track 31 : Emotion_13
- Track 32 : AbbeyMikolon_13, Nesbitt_13
- Track 33 : Rowa_13
- Track 34 : PFR2_14
- Track 35 : PFR1_12
- Track 36 : Percival_13, Gretchen_13

- Track 37 : SuMoo_12
- Track 38 : Floof_13
- Track 39 : Zeta1847_12
- Track 40 : GardenState_13, IAmGroot_13
- Track 41 : Mabodamaca_13
- Track 42 : Caron_12, UtzChips_12, Barnstormer_12
- Track 43 : Cen1621_12
- Track 44 : Honk_12

Summary of Final Annotations (See graph section above for start numbers):

The start number called the most often in the published annotations is 6, it was called in 51 of the 56 non-draft genes in the pham.

Genes that call this "Most Annotated" start:

- AEgle_14, AGrandiflora_14, Adolin_15, Adumb2043_14, AinMach_13, Amyev_14, Asa16_14, Ascela_14, Barnstormer_12, Berrie_14, Caron_12, Cassia_14, Cen1621_12, Community_15, Crewmate_15, Cyan_14, DrManhattan_14, DrSierra_14, Elezi_14, Emotion_13, Eraser_14, Exile_13, Floof_13, GardenState_13, Gretchen_13, Honk_12, IAmGroot_13, Iter_14, IttyBittyPiggy_14, Janeemi_15, JasmineDragon_13, Joemato_15, JohnDoe_14, Jstan_14, JuneStar_14, Kaylissa_14, KeAlii_14, Lego_14, Liebe_13, Lizalica_14, London_14, MaGuCo_13, Mabodamaca_13, Maureen_13, MiniMommy_12, Moss_16, Mudpuppy_14, Niobe_14, Nitro_14, ObiToo_14, Percival_13, Phives_15, Pixelle_14, Powerpuff_14, Pumpkins_25, ShakeltOph_13, Simpson_15, Snek_14, Soondubu_13, SuMoo_12, Sue2_14, Tallboi_14, Tbone_14, TforTroy_14, Tian_14, Tuck_15, Turab_14, Tutumahutu_14, Tweety19_14, UtzChips_12, VResidence_14, VroomVroom_13, Warda_14, Wildwest_15, Yang_14, YesChef_14,

Genes that have the "Most Annotated" start but do not call it:

-

Genes that do not have the "Most Annotated" start:

- AbbeyMikolon_13, MissSwiss_14, Nesbitt_13, PFR1_12, PFR2_14, Reedo_14, Rowa_13, Zeta1847_12,

Summary by start number:

Start 4:

- Found in 1 of 84 (1.2%) of genes in pham
- Manual Annotations of this start: 1 of 56
- Called 100.0% of time when present
- Phage (with cluster) where this start called: Zeta1847_12 (EH),

Start 5:

- Found in 1 of 84 (1.2%) of genes in pham
- No Manual Annotations of this start.
- Called 100.0% of time when present
- Phage (with cluster) where this start called: PFR1_12 (BX),

Start 6:

- Found in 76 of 84 (90.5%) of genes in pham
- Manual Annotations of this start: 51 of 56
- Called 100.0% of time when present
- Phage (with cluster) where this start called: AEgle_14 (AZ1), AGrandiflora_14 (AZ1), Adolin_15 (AZ1), Adumb2043_14 (AZ1), AinMach_13 (AZ), Amyev_14 (AZ1), Asa16_14 (AZ1), Ascela_14 (AZ1), Barnstormer_12 (EH), Berrie_14 (AZ1), Caron_12 (EH), Cassia_14 (AZ1), Cen1621_12 (EH), Community_15 (AZ1), Crewmate_15 (AZ1), Cyan_14 (AZ1), DrManhattan_14 (AZ1), DrSierra_14 (AZ1), Elezi_14 (AZ1), Emotion_13 (AZ4), Eraser_14 (AZ1), Exile_13 (AZ), Floof_13 (EH), GardenState_13 (EH), Gretchen_13 (EH), Honk_12 (EH), IAmGroot_13 (EH), Iter_14 (AZ1), IttyBittyPiggy_14 (AZ1), Janeemi_15 (AZ1), JasmineDragon_13 (AZ4), Joemato_15 (AZ1), JohnDoe_14 (AZ1), Jstan_14 (AZ1), JuneStar_14 (AZ1), Kaylissa_14 (AZ1), KeAii_14 (AZ1), Lego_14 (AZ1), Liebe_13 (AZ2), Lizalica_14 (AZ1), London_14 (AZ1), MaGuCo_13 (AZ2), Mabodamaca_13 (EH), Maureen_13 (AZ2), MiniMommy_12 (AZ4), Moss_16 (AZ), Mudpuppy_14 (AZ1), Niobe_14 (AZ1), Nitro_14 (AZ1), ObiToo_14 (AZ1), Percival_13 (EH), Phives_15 (AZ1), Pixelle_14 (AZ1), Powerpuff_14 (AZ1), Pumpkins_25 (AZ1), ShakeltOph_13 (AZ4), Simpson_15 (AZ1), Snek_14 (AZ3), Soondubu_13 (AZ), SuMoo_12 (EH), Sue2_14 (AZ1), Tallboi_14 (AZ1), Tbone_14 (AZ1), TforTroy_14 (AZ1), Tian_14 (AZ1), Tuck_15 (AZ1), Turab_14 (AZ1), Tutumahutu_14 (AZ1), Tweety19_14 (AZ3), UtzChips_12 (EH), VResidence_14 (AZ1), VroomVroom_13 (AZ4), Warda_14 (AZ1), Wildwest_15 (AZ1), Yang_14 (AZ1), YesChef_14 (AZ1),

Start 7:

- Found in 2 of 84 (2.4%) of genes in pham
- Manual Annotations of this start: 1 of 56
- Called 100.0% of time when present
- Phage (with cluster) where this start called: MissSwiss_14 (AZ1), Reedo_14 (AZ1),

Start 9:

- Found in 2 of 84 (2.4%) of genes in pham
- Manual Annotations of this start: 2 of 56
- Called 100.0% of time when present
- Phage (with cluster) where this start called: AbbeyMikolon_13 (BL), Nesbitt_13 (BL),

Start 10:

- Found in 1 of 84 (1.2%) of genes in pham
- Manual Annotations of this start: 1 of 56
- Called 100.0% of time when present
- Phage (with cluster) where this start called: Rowa_13 (BL),

Start 15:

- Found in 8 of 84 (9.5%) of genes in pham
- No Manual Annotations of this start.
- Called 12.5% of time when present
- Phage (with cluster) where this start called: PFR2_14 (BX),

Summary by clusters:

There are 8 clusters represented in this pham: AZ, EH, BL, BX, AZ1, AZ2, AZ3, AZ4,

Info for manual annotations of cluster AZ1:

- Start number 6 was manually annotated 33 times for cluster AZ1.
- Start number 7 was manually annotated 1 time for cluster AZ1.

Info for manual annotations of cluster AZ2:

- Start number 6 was manually annotated 3 times for cluster AZ2.

Info for manual annotations of cluster AZ3:

- Start number 6 was manually annotated 2 times for cluster AZ3.

Info for manual annotations of cluster AZ4:

- Start number 6 was manually annotated 2 times for cluster AZ4.

Info for manual annotations of cluster BL:

- Start number 9 was manually annotated 2 times for cluster BL.
- Start number 10 was manually annotated 1 time for cluster BL.

Info for manual annotations of cluster EH:

- Start number 4 was manually annotated 1 time for cluster EH.
- Start number 6 was manually annotated 11 times for cluster EH.

Gene Information:

Gene: AEgle_14 Start: 10121, Stop: 10390, Start Num: 6

Candidate Starts for AEgle_14:

(Start: 6 @10121 has 51 MA's), (14, 10199), (29, 10316), (33, 10352),

Gene: AGrandiflora_14 Start: 10110, Stop: 10382, Start Num: 6

Candidate Starts for AGrandiflora_14:

(2, 9879), (3, 10041), (Start: 6 @10110 has 51 MA's), (29, 10308), (32, 10341), (33, 10344),

Gene: AbbeyMikolon_13 Start: 8843, Stop: 9109, Start Num: 9

Candidate Starts for AbbeyMikolon_13:

(Start: 9 @8843 has 2 MA's), (13, 8894), (32, 9068), (35, 9089),

Gene: Adolin_15 Start: 10098, Stop: 10367, Start Num: 6

Candidate Starts for Adolin_15:

(Start: 6 @10098 has 51 MA's), (12, 10143), (33, 10329),

Gene: Adumb2043_14 Start: 10120, Stop: 10389, Start Num: 6

Candidate Starts for Adumb2043_14:

(Start: 6 @10120 has 51 MA's), (14, 10198), (29, 10315), (33, 10351),

Gene: AinMach_13 Start: 9226, Stop: 9495, Start Num: 6

Candidate Starts for AinMach_13:

(3, 9160), (Start: 6 @9226 has 51 MA's), (22, 9364),

Gene: Amyev_14 Start: 10132, Stop: 10401, Start Num: 6

Candidate Starts for Amyev_14:

(Start: 6 @10132 has 51 MA's), (29, 10327),

Gene: Asa16_14 Start: 10090, Stop: 10359, Start Num: 6
Candidate Starts for Asa16_14:
(Start: 6 @10090 has 51 MA's), (29, 10285), (33, 10321),

Gene: Ascela_14 Start: 10125, Stop: 10394, Start Num: 6
Candidate Starts for Ascela_14:
(Start: 6 @10125 has 51 MA's), (29, 10320),

Gene: Barnstormer_12 Start: 9304, Stop: 9579, Start Num: 6
Candidate Starts for Barnstormer_12:
(Start: 6 @9304 has 51 MA's),

Gene: Berrie_14 Start: 10094, Stop: 10366, Start Num: 6
Candidate Starts for Berrie_14:
(Start: 6 @10094 has 51 MA's), (29, 10292),

Gene: Caron_12 Start: 9346, Stop: 9621, Start Num: 6
Candidate Starts for Caron_12:
(Start: 6 @9346 has 51 MA's),

Gene: Cassia_14 Start: 10208, Stop: 10474, Start Num: 6
Candidate Starts for Cassia_14:
(Start: 6 @10208 has 51 MA's), (29, 10400), (32, 10433),

Gene: Cen1621_12 Start: 8442, Stop: 8714, Start Num: 6
Candidate Starts for Cen1621_12:
(Start: 6 @8442 has 51 MA's), (15, 8526), (33, 8676),

Gene: Community_15 Start: 11176, Stop: 11448, Start Num: 6
Candidate Starts for Community_15:
(Start: 6 @11176 has 51 MA's), (29, 11374),

Gene: Crewmate_15 Start: 10566, Stop: 10835, Start Num: 6
Candidate Starts for Crewmate_15:
(Start: 6 @10566 has 51 MA's), (12, 10611), (29, 10761),

Gene: Cyan_14 Start: 10113, Stop: 10385, Start Num: 6
Candidate Starts for Cyan_14:
(Start: 6 @10113 has 51 MA's), (16, 10200), (29, 10311), (32, 10344), (33, 10347),

Gene: DrManhattan_14 Start: 10088, Stop: 10357, Start Num: 6
Candidate Starts for DrManhattan_14:
(Start: 6 @10088 has 51 MA's), (12, 10133), (33, 10319),

Gene: DrSierra_14 Start: 10119, Stop: 10388, Start Num: 6
Candidate Starts for DrSierra_14:
(Start: 6 @10119 has 51 MA's), (12, 10164), (15, 10200), (29, 10314), (33, 10350),

Gene: Elezi_14 Start: 10091, Stop: 10360, Start Num: 6
Candidate Starts for Elezi_14:
(Start: 6 @10091 has 51 MA's), (29, 10286), (33, 10322),

Gene: Emotion_13 Start: 8425, Stop: 8691, Start Num: 6
Candidate Starts for Emotion_13:
(3, 8359), (Start: 6 @8425 has 51 MA's), (11, 8458), (32, 8650),

Gene: Eraser_14 Start: 10091, Stop: 10360, Start Num: 6
Candidate Starts for Eraser_14:
(Start: 6 @10091 has 51 MA's), (29, 10286), (33, 10322),

Gene: Exile_13 Start: 10019, Stop: 10291, Start Num: 6
Candidate Starts for Exile_13:
(Start: 6 @10019 has 51 MA's),

Gene: Floof_13 Start: 8909, Stop: 9184, Start Num: 6
Candidate Starts for Floof_13:
(Start: 6 @8909 has 51 MA's), (19, 9026), (32, 9143), (34, 9152),

Gene: GardenState_13 Start: 9573, Stop: 9848, Start Num: 6
Candidate Starts for GardenState_13:
(Start: 6 @9573 has 51 MA's), (25, 9726), (34, 9816),

Gene: Gretchen_13 Start: 10435, Stop: 10710, Start Num: 6
Candidate Starts for Gretchen_13:
(Start: 6 @10435 has 51 MA's), (30, 10648), (32, 10669),

Gene: Honk_12 Start: 8396, Stop: 8665, Start Num: 6
Candidate Starts for Honk_12:
(Start: 6 @8396 has 51 MA's), (26, 8558),

Gene: IAmGroot_13 Start: 10217, Stop: 10492, Start Num: 6
Candidate Starts for IAmGroot_13:
(Start: 6 @10217 has 51 MA's), (25, 10370), (34, 10460),

Gene: Iter_14 Start: 10125, Stop: 10394, Start Num: 6
Candidate Starts for Iter_14:
(Start: 6 @10125 has 51 MA's), (29, 10320),

Gene: IttyBittyPiggy_14 Start: 10108, Stop: 10371, Start Num: 6
Candidate Starts for IttyBittyPiggy_14:
(Start: 6 @10108 has 51 MA's), (29, 10297),

Gene: Janeemi_15 Start: 11204, Stop: 11476, Start Num: 6
Candidate Starts for Janeemi_15:
(Start: 6 @11204 has 51 MA's), (29, 11402),

Gene: JasmineDragon_13 Start: 8354, Stop: 8620, Start Num: 6
Candidate Starts for JasmineDragon_13:
(Start: 6 @8354 has 51 MA's),

Gene: Joemato_15 Start: 10113, Stop: 10385, Start Num: 6
Candidate Starts for Joemato_15:
(Start: 6 @10113 has 51 MA's), (16, 10200), (29, 10311), (32, 10344), (33, 10347),

Gene: JohnDoe_14 Start: 10108, Stop: 10380, Start Num: 6

Candidate Starts for JohnDoe_14:
(Start: 6 @10108 has 51 MA's), (16, 10195), (29, 10306), (32, 10339), (33, 10342),

Gene: Jstan_14 Start: 10091, Stop: 10360, Start Num: 6
Candidate Starts for Jstan_14:
(Start: 6 @10091 has 51 MA's), (29, 10286), (33, 10322),

Gene: JuneStar_14 Start: 10206, Stop: 10472, Start Num: 6
Candidate Starts for JuneStar_14:
(Start: 6 @10206 has 51 MA's), (29, 10398),

Gene: Kaylissa_14 Start: 10114, Stop: 10386, Start Num: 6
Candidate Starts for Kaylissa_14:
(Start: 6 @10114 has 51 MA's), (16, 10201), (29, 10312), (32, 10345), (33, 10348),

Gene: KeAlii_14 Start: 10157, Stop: 10426, Start Num: 6
Candidate Starts for KeAlii_14:
(Start: 6 @10157 has 51 MA's), (15, 10238), (27, 10334), (29, 10352),

Gene: Lego_14 Start: 10113, Stop: 10385, Start Num: 6
Candidate Starts for Lego_14:
(2, 9882), (3, 10044), (Start: 6 @10113 has 51 MA's), (29, 10311), (32, 10344), (33, 10347),

Gene: Liebe_13 Start: 8595, Stop: 8864, Start Num: 6
Candidate Starts for Liebe_13:
(Start: 6 @8595 has 51 MA's), (24, 8739),

Gene: Lizalica_14 Start: 10098, Stop: 10370, Start Num: 6
Candidate Starts for Lizalica_14:
(Start: 6 @10098 has 51 MA's), (29, 10296), (32, 10329), (33, 10332),

Gene: London_14 Start: 10091, Stop: 10360, Start Num: 6
Candidate Starts for London_14:
(Start: 6 @10091 has 51 MA's), (29, 10286), (33, 10322),

Gene: MaGuCo_13 Start: 8529, Stop: 8798, Start Num: 6
Candidate Starts for MaGuCo_13:
(Start: 6 @8529 has 51 MA's), (24, 8673),

Gene: Mabodamaca_13 Start: 9642, Stop: 9917, Start Num: 6
Candidate Starts for Mabodamaca_13:
(Start: 6 @9642 has 51 MA's), (25, 9795), (32, 9876),

Gene: Maureen_13 Start: 8595, Stop: 8864, Start Num: 6
Candidate Starts for Maureen_13:
(Start: 6 @8595 has 51 MA's), (24, 8739),

Gene: MiniMommy_12 Start: 8355, Stop: 8621, Start Num: 6
Candidate Starts for MiniMommy_12:
(Start: 6 @8355 has 51 MA's),

Gene: MissSwiss_14 Start: 10094, Stop: 10360, Start Num: 7
Candidate Starts for MissSwiss_14:

(Start: 7 @10094 has 1 MA's), (12, 10136), (31, 10304),

Gene: Moss_16 Start: 9665, Stop: 9934, Start Num: 6

Candidate Starts for Moss_16:

(Start: 6 @9665 has 51 MA's), (23, 9806), (28, 9851), (34, 9902),

Gene: Mudpuppy_14 Start: 10112, Stop: 10384, Start Num: 6

Candidate Starts for Mudpuppy_14:

(Start: 6 @10112 has 51 MA's), (29, 10310), (32, 10343), (33, 10346),

Gene: Nesbitt_13 Start: 8915, Stop: 9181, Start Num: 9

Candidate Starts for Nesbitt_13:

(Start: 9 @8915 has 2 MA's), (13, 8966), (32, 9140), (35, 9161),

Gene: Niobe_14 Start: 10091, Stop: 10360, Start Num: 6

Candidate Starts for Niobe_14:

(Start: 6 @10091 has 51 MA's), (29, 10286), (33, 10322),

Gene: Nitro_14 Start: 10114, Stop: 10383, Start Num: 6

Candidate Starts for Nitro_14:

(Start: 6 @10114 has 51 MA's), (29, 10309), (33, 10345),

Gene: ObiToo_14 Start: 10303, Stop: 10572, Start Num: 6

Candidate Starts for ObiToo_14:

(Start: 6 @10303 has 51 MA's), (12, 10348), (29, 10498),

Gene: PFR1_12 Start: 8805, Stop: 9089, Start Num: 5

Candidate Starts for PFR1_12:

(5, 8805), (15, 8892), (17, 8910), (18, 8916), (21, 8928), (36, 9072),

Gene: PFR2_14 Start: 10461, Stop: 10658, Start Num: 15

Candidate Starts for PFR2_14:

(15, 10461), (17, 10479), (18, 10485), (21, 10497), (36, 10641),

Gene: Percival_13 Start: 10269, Stop: 10544, Start Num: 6

Candidate Starts for Percival_13:

(Start: 6 @10269 has 51 MA's), (30, 10482), (32, 10503),

Gene: Phives_15 Start: 11192, Stop: 11461, Start Num: 6

Candidate Starts for Phives_15:

(Start: 6 @11192 has 51 MA's), (29, 11387),

Gene: Pixelle_14 Start: 10135, Stop: 10404, Start Num: 6

Candidate Starts for Pixelle_14:

(Start: 6 @10135 has 51 MA's), (15, 10216), (29, 10330),

Gene: Powerpuff_14 Start: 10164, Stop: 10436, Start Num: 6

Candidate Starts for Powerpuff_14:

(2, 9933), (3, 10095), (Start: 6 @10164 has 51 MA's), (29, 10362), (32, 10395), (33, 10398),

Gene: Pumpkins_25 Start: 10215, Stop: 10484, Start Num: 6

Candidate Starts for Pumpkins_25:

(Start: 6 @10215 has 51 MA's), (29, 10410), (32, 10443),

Gene: Reedo_14 Start: 10171, Stop: 10437, Start Num: 7

Candidate Starts for Reedo_14:

(Start: 7 @10171 has 1 MA's), (15, 10249), (29, 10363),

Gene: Rowa_13 Start: 8677, Stop: 8931, Start Num: 10

Candidate Starts for Rowa_13:

(8, 8662), (Start: 10 @8677 has 1 MA's), (22, 8800), (30, 8869), (35, 8911),

Gene: ShakeltOph_13 Start: 8354, Stop: 8620, Start Num: 6

Candidate Starts for ShakeltOph_13:

(Start: 6 @8354 has 51 MA's),

Gene: Simpson_15 Start: 10113, Stop: 10385, Start Num: 6

Candidate Starts for Simpson_15:

(Start: 6 @10113 has 51 MA's), (16, 10200), (29, 10311), (32, 10344), (33, 10347),

Gene: Snek_14 Start: 9207, Stop: 9476, Start Num: 6

Candidate Starts for Snek_14:

(Start: 6 @9207 has 51 MA's), (12, 9252), (20, 9321),

Gene: Soondubu_13 Start: 10020, Stop: 10292, Start Num: 6

Candidate Starts for Soondubu_13:

(Start: 6 @10020 has 51 MA's),

Gene: SuMoo_12 Start: 8599, Stop: 8874, Start Num: 6

Candidate Starts for SuMoo_12:

(Start: 6 @8599 has 51 MA's), (25, 8752), (32, 8833),

Gene: Sue2_14 Start: 10128, Stop: 10391, Start Num: 6

Candidate Starts for Sue2_14:

(Start: 6 @10128 has 51 MA's), (11, 10158),

Gene: Tallboi_14 Start: 10118, Stop: 10387, Start Num: 6

Candidate Starts for Tallboi_14:

(Start: 6 @10118 has 51 MA's), (29, 10313), (33, 10349),

Gene: Tbone_14 Start: 10117, Stop: 10389, Start Num: 6

Candidate Starts for Tbone_14:

(1, 9646), (Start: 6 @10117 has 51 MA's), (29, 10315), (32, 10348), (33, 10351),

Gene: TforTroy_14 Start: 10233, Stop: 10502, Start Num: 6

Candidate Starts for TforTroy_14:

(Start: 6 @10233 has 51 MA's), (29, 10428), (32, 10461),

Gene: Tian_14 Start: 10132, Stop: 10401, Start Num: 6

Candidate Starts for Tian_14:

(Start: 6 @10132 has 51 MA's), (29, 10327),

Gene: Tuck_15 Start: 11156, Stop: 11428, Start Num: 6

Candidate Starts for Tuck_15:

(Start: 6 @11156 has 51 MA's), (29, 11354),

Gene: Turab_14 Start: 10120, Stop: 10389, Start Num: 6
Candidate Starts for Turab_14:
(Start: 6 @10120 has 51 MA's), (14, 10198), (29, 10315), (33, 10351),

Gene: Tutumahutu_14 Start: 10164, Stop: 10436, Start Num: 6
Candidate Starts for Tutumahutu_14:
(2, 9933), (3, 10095), (Start: 6 @10164 has 51 MA's), (29, 10362), (32, 10395), (33, 10398),

Gene: Tweety19_14 Start: 9206, Stop: 9475, Start Num: 6
Candidate Starts for Tweety19_14:
(Start: 6 @9206 has 51 MA's), (12, 9251), (20, 9320),

Gene: UtzChips_12 Start: 9292, Stop: 9567, Start Num: 6
Candidate Starts for UtzChips_12:
(Start: 6 @9292 has 51 MA's),

Gene: VResidence_14 Start: 10200, Stop: 10466, Start Num: 6
Candidate Starts for VResidence_14:
(3, 10125), (Start: 6 @10200 has 51 MA's), (16, 10281), (32, 10425),

Gene: VroomVroom_13 Start: 8366, Stop: 8632, Start Num: 6
Candidate Starts for VroomVroom_13:
(Start: 6 @8366 has 51 MA's),

Gene: Warda_14 Start: 10109, Stop: 10381, Start Num: 6
Candidate Starts for Warda_14:
(Start: 6 @10109 has 51 MA's), (29, 10307), (32, 10340), (33, 10343),

Gene: Wildwest_15 Start: 11039, Stop: 11308, Start Num: 6
Candidate Starts for Wildwest_15:
(Start: 6 @11039 has 51 MA's), (12, 11084), (15, 11120), (29, 11234),

Gene: Yang_14 Start: 10203, Stop: 10472, Start Num: 6
Candidate Starts for Yang_14:
(Start: 6 @10203 has 51 MA's), (29, 10398), (32, 10431),

Gene: YesChef_14 Start: 10164, Stop: 10436, Start Num: 6
Candidate Starts for YesChef_14:
(2, 9933), (3, 10095), (Start: 6 @10164 has 51 MA's), (29, 10362), (32, 10395), (33, 10398),

Gene: Zeta1847_12 Start: 8400, Stop: 8708, Start Num: 4
Candidate Starts for Zeta1847_12:
(Start: 4 @8400 has 1 MA's),