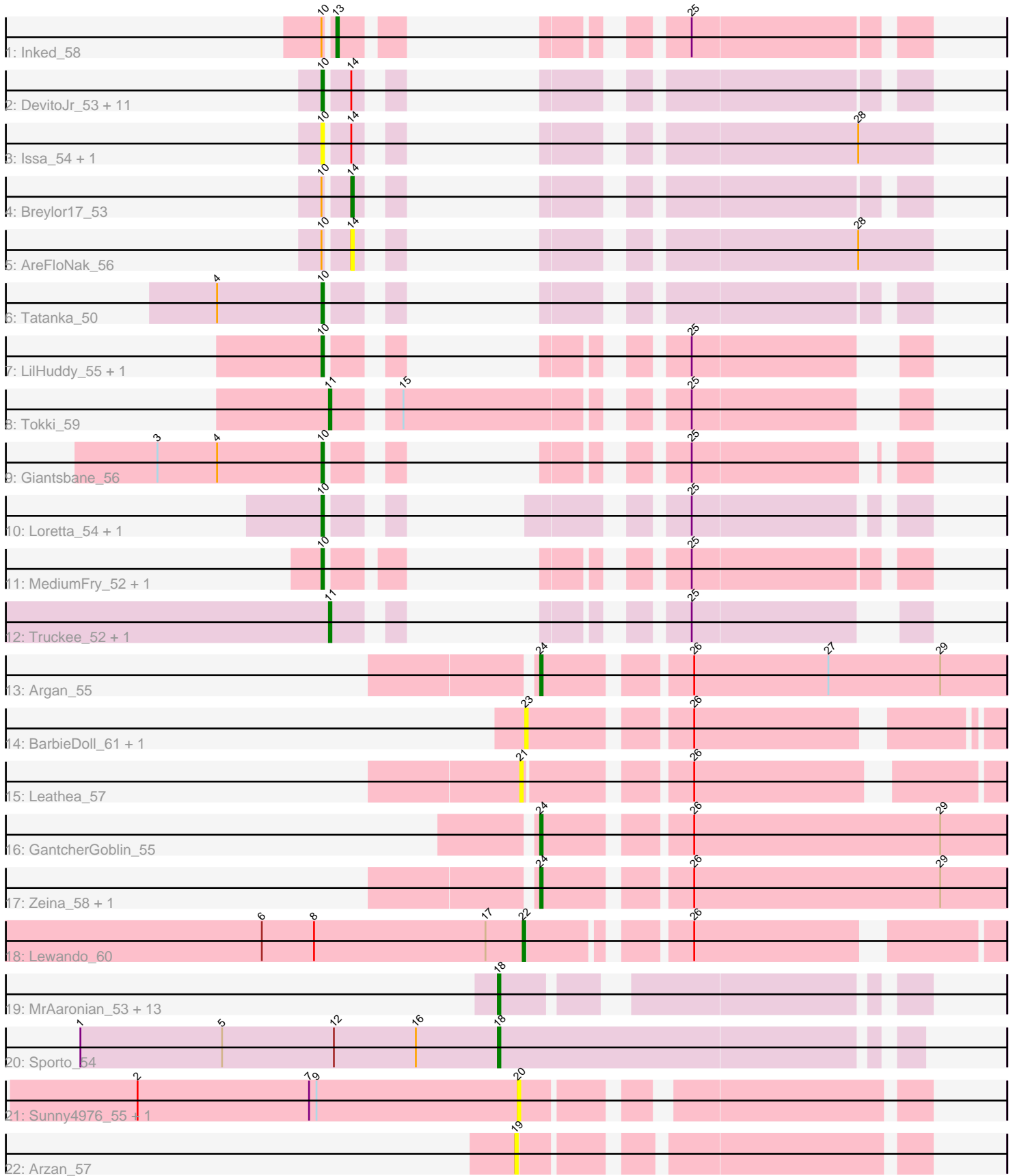


Pham 156417



Note: Tracks are now grouped by subcluster and scaled. Switching in subcluster is indicated by changes in track color. Track scale is now set by default to display the region 30 bp upstream of start 1 to 30 bp downstream of the last possible start. If this default region is judged to be packed too tightly with annotated starts, the track will be further scaled to only show that region of the ORF with annotated starts. This action will be indicated by adding "Zoomed" to the title. For starts, yellow indicates the location of called starts comprised solely of Glimmer/GeneMark auto-annotations, green indicates the location of called starts with at least 1 manual gene annotation.

Pham 156417 Report

This analysis was run 04/12/24 on database version 558.

Pham number 156417 has 54 members, 14 are drafts.

Phages represented in each track:

- Track 1 : Inked_58
- Track 2 : DevitoJr_53, MiniBagel_51, Trustiboi_53, Nightmare_55, Synopsis_52, Niktson_53, ScienceWizSam_54, ElephantMan_53, Brunswick_53, CastorTray_56, Tenno_54, Darby_52
- Track 3 : Issa_54, Nivinsha_55
- Track 4 : Breylor17_53
- Track 5 : AreFloNak_56
- Track 6 : Tatanka_50
- Track 7 : LilHuddy_55, Shepard_56
- Track 8 : Tokki_59
- Track 9 : Giantsbane_56
- Track 10 : Loretta_54, Ingrid_57
- Track 11 : MediumFry_52, Caterpillar_51
- Track 12 : Truckee_52, Makai_54
- Track 13 : Argan_55
- Track 14 : BarbieDoll_61, Renaldo_63
- Track 15 : Leathea_57
- Track 16 : GantcherGoblin_55
- Track 17 : Zeina_58, Uzumaki_54
- Track 18 : Lewando_60
- Track 19 : MrAaronian_53, DoctorPepper_55, Djungelskog_52, Salk_53, Egad_53, Stayer_53, Sloopyjoe_53, Raunak_56, Linda_53, BronxBay_53, StarLord_53, ProfFrink_56, Shiba_52, Michelle_53
- Track 20 : Sporto_54
- Track 21 : Sunny4976_55, Jazzy4900_56
- Track 22 : Arzan_57

Summary of Final Annotations (See graph section above for start numbers):

The start number called the most often in the published annotations is 10, it was called in 18 of the 40 non-draft genes in the pham.

Genes that call this "Most Annotated" start:

- Brunswick_53, CastorTray_56, Caterpillar_51, Darby_52, DevitoJr_53, ElephantMan_53, Giantsbane_56, Ingrid_57, Issa_54, LilHuddy_55, Loretta_54, MediumFry_52, MiniBagel_51, Nightmare_55, Niktson_53, Nivinsha_55, ScienceWizSam_54, Shepard_56, Synepsis_52, Tatanka_50, Tenno_54, Trustiboi_53,

Genes that have the "Most Annotated" start but do not call it:

- AreFloNak_56, Breylor17_53, Inked_58,

Genes that do not have the "Most Annotated" start:

- Argan_55, Arzan_57, BarbieDoll_61, BronxBay_53, Djungelskog_52, DoctorPepper_55, Egad_53, GantcherGoblin_55, Jazzy4900_56, Leathea_57, Lewando_60, Linda_53, Makai_54, Michelle_53, MrAaronian_53, ProfFrink_56, Raunak_56, Renaldo_63, Salk_53, Shiba_52, Sloopyjoe_53, Sporto_54, StarLord_53, Stayer_53, Sunny4976_55, Tokki_59, Truckee_52, Uzumaki_54, Zeina_58,

Summary by start number:

Start 10:

- Found in 25 of 54 (46.3%) of genes in pham
- Manual Annotations of this start: 18 of 40
- Called 88.0% of time when present
- Phage (with cluster) where this start called: Brunswick_53 (AU1), CastorTray_56 (AU1), Caterpillar_51 (AU4), Darby_52 (AU1), DevitoJr_53 (AU1), ElephantMan_53 (AU1), Giantsbane_56 (AU2), Ingrid_57 (AU3), Issa_54 (AU1), LilHuddy_55 (AU2), Loretta_54 (AU3), MediumFry_52 (AU4), MiniBagel_51 (AU1), Nightmare_55 (AU1), Niktson_53 (AU1), Nivinsha_55 (AU1), ScienceWizSam_54 (AU1), Shepard_56 (AU2), Synepsis_52 (AU1), Tatanka_50 (AU1), Tenno_54 (AU1), Trustiboi_53 (AU1),

Start 11:

- Found in 3 of 54 (5.6%) of genes in pham
- Manual Annotations of this start: 3 of 40
- Called 100.0% of time when present
- Phage (with cluster) where this start called: Makai_54 (AU5), Tokki_59 (AU2), Truckee_52 (AU5),

Start 13:

- Found in 1 of 54 (1.9%) of genes in pham
- Manual Annotations of this start: 1 of 40
- Called 100.0% of time when present
- Phage (with cluster) where this start called: Inked_58 (AU),

Start 14:

- Found in 16 of 54 (29.6%) of genes in pham
- Manual Annotations of this start: 1 of 40
- Called 12.5% of time when present
- Phage (with cluster) where this start called: AreFloNak_56 (AU1), Breylor17_53 (AU1),

Start 18:

- Found in 15 of 54 (27.8%) of genes in pham
- Manual Annotations of this start: 12 of 40

- Called 100.0% of time when present
- Phage (with cluster) where this start called: BronxBay_53 (AW), Djungelskog_52 (AW), DoctorPepper_55 (AW), Egad_53 (AW), Linda_53 (AW), Michelle_53 (AW), MrAaronian_53 (AW), ProfFrink_56 (AW), Raunak_56 (AW), Salk_53 (AW), Shiba_52 (AW), Sloopyjoe_53 (AW), Sporto_54 (AW), StarLord_53 (AW), Stayer_53 (AW),

Start 19:

- Found in 1 of 54 (1.9%) of genes in pham
- No Manual Annotations of this start.
- Called 100.0% of time when present
- Phage (with cluster) where this start called: Arzan_57 (FI),

Start 20:

- Found in 2 of 54 (3.7%) of genes in pham
- No Manual Annotations of this start.
- Called 100.0% of time when present
- Phage (with cluster) where this start called: Jazzy4900_56 (FI), Sunny4976_55 (FI),

Start 21:

- Found in 1 of 54 (1.9%) of genes in pham
- No Manual Annotations of this start.
- Called 100.0% of time when present
- Phage (with cluster) where this start called: Leathea_57 (AU6),

Start 22:

- Found in 1 of 54 (1.9%) of genes in pham
- Manual Annotations of this start: 1 of 40
- Called 100.0% of time when present
- Phage (with cluster) where this start called: Lewando_60 (AU6),

Start 23:

- Found in 2 of 54 (3.7%) of genes in pham
- No Manual Annotations of this start.
- Called 100.0% of time when present
- Phage (with cluster) where this start called: BarbieDoll_61 (AU6), Renaldo_63 (AU6),

Start 24:

- Found in 4 of 54 (7.4%) of genes in pham
- Manual Annotations of this start: 4 of 40
- Called 100.0% of time when present
- Phage (with cluster) where this start called: Argan_55 (AU6), GantcherGoblin_55 (AU6), Uzumaki_54 (AU6), Zeina_58 (AU6),

Summary by clusters:

There are 9 clusters represented in this pham: AU1, AU3, AU2, AU5, AU4, AW, AU6, FI, AU,

Info for manual annotations of cluster AU:

- Start number 13 was manually annotated 1 time for cluster AU.

Info for manual annotations of cluster AU1:

- Start number 10 was manually annotated 11 times for cluster AU1.
- Start number 14 was manually annotated 1 time for cluster AU1.

Info for manual annotations of cluster AU2:

- Start number 10 was manually annotated 3 times for cluster AU2.
- Start number 11 was manually annotated 1 time for cluster AU2.

Info for manual annotations of cluster AU3:

- Start number 10 was manually annotated 2 times for cluster AU3.

Info for manual annotations of cluster AU4:

- Start number 10 was manually annotated 2 times for cluster AU4.

Info for manual annotations of cluster AU5:

- Start number 11 was manually annotated 2 times for cluster AU5.

Info for manual annotations of cluster AU6:

- Start number 22 was manually annotated 1 time for cluster AU6.
- Start number 24 was manually annotated 4 times for cluster AU6.

Info for manual annotations of cluster AW:

- Start number 18 was manually annotated 12 times for cluster AW.

Gene Information:

Gene: AreFloNak_56 Start: 37115, Stop: 37267, Start Num: 14

Candidate Starts for AreFloNak_56:

(Start: 10 @37106 has 18 MA's), (Start: 14 @37115 has 1 MA's), (28, 37238),

Gene: Argan_55 Start: 35758, Stop: 35934, Start Num: 24

Candidate Starts for Argan_55:

(Start: 24 @35758 has 4 MA's), (26, 35809), (27, 35863), (29, 35908),

Gene: Arzan_57 Start: 36656, Stop: 36799, Start Num: 19

Candidate Starts for Arzan_57:

(19, 36656),

Gene: BarbieDoll_61 Start: 37477, Stop: 37641, Start Num: 23

Candidate Starts for BarbieDoll_61:

(23, 37477), (26, 37534),

Gene: Breylor17_53 Start: 37706, Stop: 37849, Start Num: 14

Candidate Starts for Breylor17_53:

(Start: 10 @37697 has 18 MA's), (Start: 14 @37706 has 1 MA's),

Gene: BronxBay_53 Start: 34842, Stop: 34985, Start Num: 18

Candidate Starts for BronxBay_53:

(Start: 18 @34842 has 12 MA's),

Gene: Brunswick_53 Start: 36988, Stop: 37140, Start Num: 10

Candidate Starts for Brunswick_53:

(Start: 10 @36988 has 18 MA's), (Start: 14 @36997 has 1 MA's),

Gene: CastorTray_56 Start: 37761, Stop: 37913, Start Num: 10

Candidate Starts for CastorTray_56:

(Start: 10 @37761 has 18 MA's), (Start: 14 @37770 has 1 MA's),

Gene: Caterpillar_51 Start: 36250, Stop: 36402, Start Num: 10

Candidate Starts for Caterpillar_51:

(Start: 10 @36250 has 18 MA's), (25, 36316),

Gene: Darby_52 Start: 36935, Stop: 37087, Start Num: 10

Candidate Starts for Darby_52:

(Start: 10 @36935 has 18 MA's), (Start: 14 @36944 has 1 MA's),

Gene: DevitoJr_53 Start: 37327, Stop: 37479, Start Num: 10

Candidate Starts for DevitoJr_53:

(Start: 10 @37327 has 18 MA's), (Start: 14 @37336 has 1 MA's),

Gene: Djungelskog_52 Start: 34841, Stop: 34984, Start Num: 18

Candidate Starts for Djungelskog_52:

(Start: 18 @34841 has 12 MA's),

Gene: DoctorPepper_55 Start: 34546, Stop: 34689, Start Num: 18

Candidate Starts for DoctorPepper_55:

(Start: 18 @34546 has 12 MA's),

Gene: Egad_53 Start: 34843, Stop: 34986, Start Num: 18

Candidate Starts for Egad_53:

(Start: 18 @34843 has 12 MA's),

Gene: ElephantMan_53 Start: 37611, Stop: 37763, Start Num: 10

Candidate Starts for ElephantMan_53:

(Start: 10 @37611 has 18 MA's), (Start: 14 @37620 has 1 MA's),

Gene: GantcherGoblin_55 Start: 35833, Stop: 36009, Start Num: 24

Candidate Starts for GantcherGoblin_55:

(Start: 24 @35833 has 4 MA's), (26, 35884), (29, 35983),

Gene: Giantsbane_56 Start: 36218, Stop: 36361, Start Num: 10

Candidate Starts for Giantsbane_56:

(3, 36152), (4, 36176), (Start: 10 @36218 has 18 MA's), (25, 36281),

Gene: Ingrid_57 Start: 37031, Stop: 37186, Start Num: 10

Candidate Starts for Ingrid_57:

(Start: 10 @37031 has 18 MA's), (25, 37103),

Gene: Inked_58 Start: 38160, Stop: 38309, Start Num: 13

Candidate Starts for Inked_58:

(Start: 10 @38157 has 18 MA's), (Start: 13 @38160 has 1 MA's), (25, 38223),

Gene: Issa_54 Start: 36978, Stop: 37139, Start Num: 10

Candidate Starts for Issa_54:

(Start: 10 @36978 has 18 MA's), (Start: 14 @36987 has 1 MA's), (28, 37110),

Gene: Jazzy4900_56 Start: 37435, Stop: 37575, Start Num: 20

Candidate Starts for Jazzy4900_56:

(2, 37282), (7, 37351), (9, 37354), (20, 37435),

Gene: Leathea_57 Start: 35593, Stop: 35760, Start Num: 21

Candidate Starts for Leathea_57:

(21, 35593), (26, 35650),

Gene: Lewando_60 Start: 37549, Stop: 37713, Start Num: 22

Candidate Starts for Lewando_60:

(6, 37444), (8, 37465), (17, 37534), (Start: 22 @37549 has 1 MA's), (26, 37603),

Gene: LilHuddy_55 Start: 37156, Stop: 37296, Start Num: 10

Candidate Starts for LilHuddy_55:

(Start: 10 @37156 has 18 MA's), (25, 37219),

Gene: Linda_53 Start: 34839, Stop: 34982, Start Num: 18

Candidate Starts for Linda_53:

(Start: 18 @34839 has 12 MA's),

Gene: Loretta_54 Start: 37031, Stop: 37186, Start Num: 10

Candidate Starts for Loretta_54:

(Start: 10 @37031 has 18 MA's), (25, 37103),

Gene: Makai_54 Start: 37254, Stop: 37394, Start Num: 11

Candidate Starts for Makai_54:

(Start: 11 @37254 has 3 MA's), (25, 37317),

Gene: MediumFry_52 Start: 36539, Stop: 36691, Start Num: 10

Candidate Starts for MediumFry_52:

(Start: 10 @36539 has 18 MA's), (25, 36605),

Gene: Michelle_53 Start: 34841, Stop: 34984, Start Num: 18

Candidate Starts for Michelle_53:

(Start: 18 @34841 has 12 MA's),

Gene: MiniBagel_51 Start: 37872, Stop: 38024, Start Num: 10

Candidate Starts for MiniBagel_51:

(Start: 10 @37872 has 18 MA's), (Start: 14 @37881 has 1 MA's),

Gene: MrAaronian_53 Start: 34841, Stop: 34984, Start Num: 18

Candidate Starts for MrAaronian_53:

(Start: 18 @34841 has 12 MA's),

Gene: Nightmare_55 Start: 38169, Stop: 38321, Start Num: 10

Candidate Starts for Nightmare_55:

(Start: 10 @38169 has 18 MA's), (Start: 14 @38178 has 1 MA's),

Gene: Niktson_53 Start: 37611, Stop: 37763, Start Num: 10

Candidate Starts for Niktson_53:

(Start: 10 @37611 has 18 MA's), (Start: 14 @37620 has 1 MA's),

Gene: Nivinsha_55 Start: 37106, Stop: 37267, Start Num: 10
Candidate Starts for Nivinsha_55:
(Start: 10 @37106 has 18 MA's), (Start: 14 @37115 has 1 MA's), (28, 37238),

Gene: ProfFrink_56 Start: 34842, Stop: 34985, Start Num: 18
Candidate Starts for ProfFrink_56:
(Start: 18 @34842 has 12 MA's),

Gene: Raunak_56 Start: 34539, Stop: 34682, Start Num: 18
Candidate Starts for Raunak_56:
(Start: 18 @34539 has 12 MA's),

Gene: Renaldo_63 Start: 37788, Stop: 37952, Start Num: 23
Candidate Starts for Renaldo_63:
(23, 37788), (26, 37845),

Gene: Salk_53 Start: 34839, Stop: 34982, Start Num: 18
Candidate Starts for Salk_53:
(Start: 18 @34839 has 12 MA's),

Gene: ScienceWizSam_54 Start: 37214, Stop: 37375, Start Num: 10
Candidate Starts for ScienceWizSam_54:
(Start: 10 @37214 has 18 MA's), (Start: 14 @37223 has 1 MA's),

Gene: Shepard_56 Start: 36997, Stop: 37137, Start Num: 10
Candidate Starts for Shepard_56:
(Start: 10 @36997 has 18 MA's), (25, 37060),

Gene: Shiba_52 Start: 34539, Stop: 34682, Start Num: 18
Candidate Starts for Shiba_52:
(Start: 18 @34539 has 12 MA's),

Gene: Sloopyjoe_53 Start: 34843, Stop: 34986, Start Num: 18
Candidate Starts for Sloopyjoe_53:
(Start: 18 @34843 has 12 MA's),

Gene: Sporto_54 Start: 36328, Stop: 36486, Start Num: 18
Candidate Starts for Sporto_54:
(1, 36160), (5, 36217), (12, 36262), (16, 36295), (Start: 18 @36328 has 12 MA's),

Gene: StarLord_53 Start: 34842, Stop: 34985, Start Num: 18
Candidate Starts for StarLord_53:
(Start: 18 @34842 has 12 MA's),

Gene: Stayer_53 Start: 34839, Stop: 34982, Start Num: 18
Candidate Starts for Stayer_53:
(Start: 18 @34839 has 12 MA's),

Gene: Sunny4976_55 Start: 37435, Stop: 37575, Start Num: 20
Candidate Starts for Sunny4976_55:
(2, 37282), (7, 37351), (9, 37354), (20, 37435),

Gene: Synopsis_52 Start: 37282, Stop: 37434, Start Num: 10
Candidate Starts for Synopsis_52:
(Start: 10 @37282 has 18 MA's), (Start: 14 @37291 has 1 MA's),

Gene: Tatanka_50 Start: 37414, Stop: 37566, Start Num: 10
Candidate Starts for Tatanka_50:
(4, 37372), (Start: 10 @37414 has 18 MA's),

Gene: Tenno_54 Start: 37945, Stop: 38097, Start Num: 10
Candidate Starts for Tenno_54:
(Start: 10 @37945 has 18 MA's), (Start: 14 @37954 has 1 MA's),

Gene: Tokki_59 Start: 37333, Stop: 37527, Start Num: 11
Candidate Starts for Tokki_59:
(Start: 11 @37333 has 3 MA's), (15, 37354), (25, 37450),

Gene: Truckee_52 Start: 37044, Stop: 37184, Start Num: 11
Candidate Starts for Truckee_52:
(Start: 11 @37044 has 3 MA's), (25, 37107),

Gene: Trustiboi_53 Start: 37483, Stop: 37635, Start Num: 10
Candidate Starts for Trustiboi_53:
(Start: 10 @37483 has 18 MA's), (Start: 14 @37492 has 1 MA's),

Gene: Uzumaki_54 Start: 35934, Stop: 36110, Start Num: 24
Candidate Starts for Uzumaki_54:
(Start: 24 @35934 has 4 MA's), (26, 35985), (29, 36084),

Gene: Zeina_58 Start: 36501, Stop: 36677, Start Num: 24
Candidate Starts for Zeina_58:
(Start: 24 @36501 has 4 MA's), (26, 36552), (29, 36651),