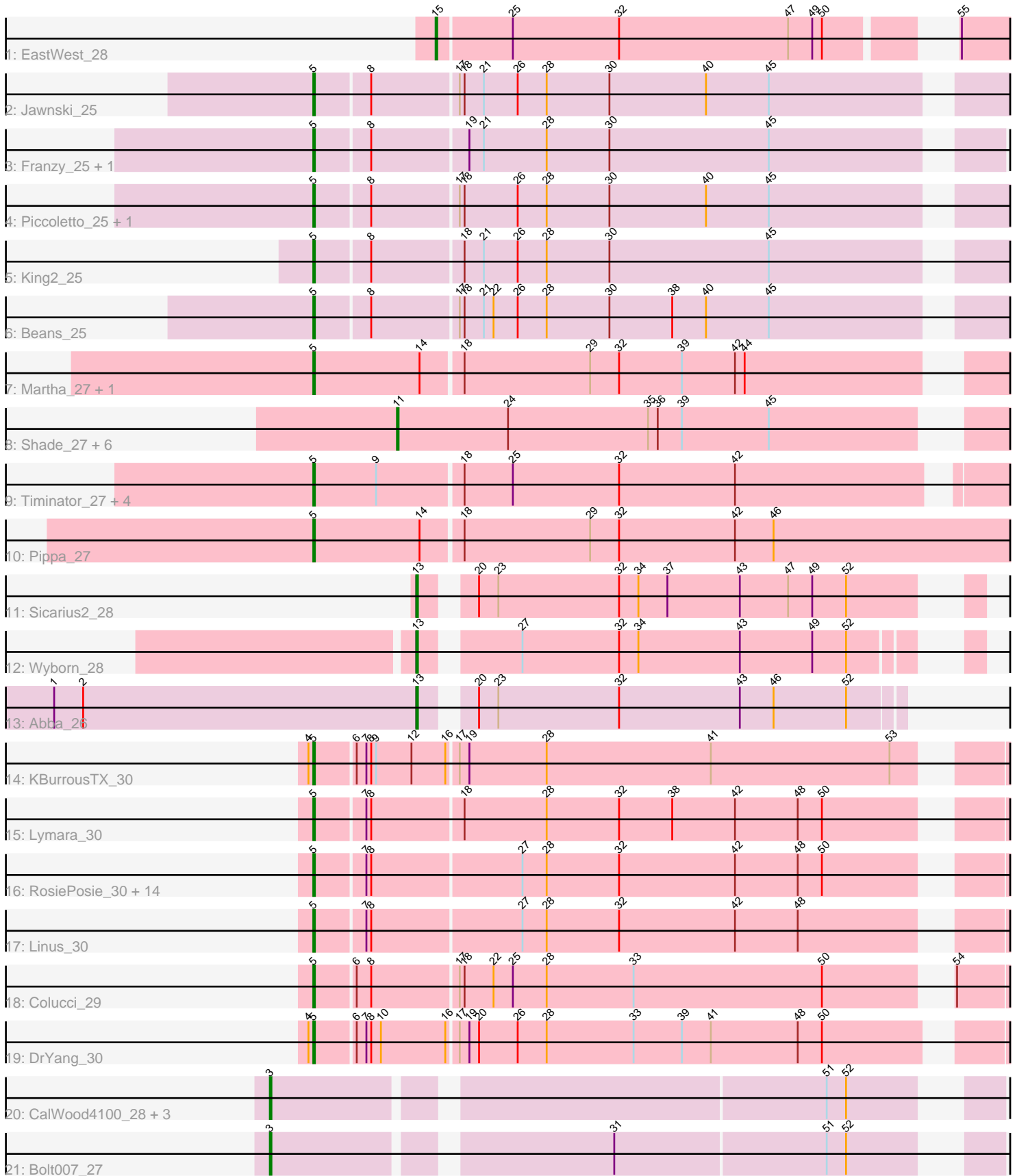


Pham 156428



Note: Tracks are now grouped by subcluster and scaled. Switching in subcluster is indicated by changes in track color. Track scale is now set by default to display the region 30 bp upstream of start 1 to 30 bp downstream of the last possible start. If this default region is judged to be packed too tightly with annotated starts, the track will be further scaled to only show that region of the ORF with annotated starts. This action will be indicated by adding "Zoomed" to the title. For starts, yellow indicates the location of called starts comprised solely of Glimmer/GeneMark auto-annotations, green indicates the location of called starts with at least 1 manual gene annotation.

Pham 156428 Report

This analysis was run 04/12/24 on database version 558.

Pham number 156428 has 51 members, 4 are drafts.

Phages represented in each track:

- Track 1 : EastWest_28
- Track 2 : Jawnski_25
- Track 3 : Franzy_25, Brent_25
- Track 4 : Piccoletto_25, NathanVaag_25
- Track 5 : King2_25
- Track 6 : Beans_25
- Track 7 : Martha_27, BossLady_27
- Track 8 : Shade_27, TaeYoung_27, Grekaycon_27, Sonny_27, JKerns_27, Jordan_27, Zartrosa_27
- Track 9 : Timinator_27, BarretLemon_27, LeeroyJ_27, GravityBall_27, StevieBAY_27
- Track 10 : Pippa_27
- Track 11 : Sicarius2_28
- Track 12 : Wyborn_28
- Track 13 : Abba_26
- Track 14 : KBurrousTX_30
- Track 15 : Lymara_30
- Track 16 : RosiePosie_30, EdgarPoe_30, Mordred_30, JaNo_30, Tophat_30, JayCookie_30, HumptyDumpty_30, Chocolat_30, Scavito_30, MoyaNatalis_30, Conboy_30, PrincessTrina_30, Kabreeze_30, Chipper1996_300, Chubster_30
- Track 17 : Linus_30
- Track 18 : Colucci_29
- Track 19 : DrYang_30
- Track 20 : CalWood4100_28, Lilmac1015_28, Prairie_26, Klevey_27
- Track 21 : Bolt007_27

Summary of Final Annotations (See graph section above for start numbers):

The start number called the most often in the published annotations is 5, it was called in 32 of the 47 non-draft genes in the pham.

Genes that call this "Most Annotated" start:

- BarretLemon_27, Beans_25, BossLady_27, Brent_25, Chipper1996_300, Chocolat_30, Chubster_30, Colucci_29, Conboy_30, DrYang_30, EdgarPoe_30,

Franzy_25, GravityBall_27, HumptyDumpty_30, JaNo_30, Jawnski_25, JayCookie_30, KBurrousTX_30, Kabreeze_30, King2_25, LeeroyJ_27, Linus_30, Lymara_30, Martha_27, Mordred_30, MoyaNatalis_30, NathanVaag_25, Piccoletto_25, Pippa_27, PrincessTrina_30, RosiePosie_30, Scavito_30, StevieBAY_27, Timinator_27, Tophat_30,

Genes that have the "Most Annotated" start but do not call it:

-

Genes that do not have the "Most Annotated" start:

• Abba_26, Bolt007_27, CalWood4100_28, EastWest_28, Grekaycon_27, JKerns_27, Jordan_27, Klevey_27, Lilmac1015_28, Prairie_26, Shade_27, Sicarius2_28, Sonny_27, TaeYoung_27, Wyborn_28, Zartrosa_27,

Summary by start number:

Start 3:

- Found in 5 of 51 (9.8%) of genes in pham
- Manual Annotations of this start: 4 of 47
- Called 100.0% of time when present
- Phage (with cluster) where this start called: Bolt007_27 (FH), CalWood4100_28 (FH), Klevey_27 (FH), Lilmac1015_28 (FH), Prairie_26 (FH),

Start 5:

- Found in 35 of 51 (68.6%) of genes in pham
- Manual Annotations of this start: 32 of 47
- Called 100.0% of time when present
- Phage (with cluster) where this start called: BarretLemon_27 (AO2), Beans_25 (AO1), BossLady_27 (AO2), Brent_25 (AO1), Chipper1996_300 (AR), Chocolat_30 (AR), Chubster_30 (AR), Colucci_29 (AR), Conboy_30 (AR), DrYang_30 (AR), EdgarPoe_30 (AR), Franzy_25 (AO1), GravityBall_27 (AO2), HumptyDumpty_30 (AR), JaNo_30 (AR), Jawnski_25 (AO1), JayCookie_30 (AR), KBurrousTX_30 (AR), Kabreeze_30 (AR), King2_25 (AO1), LeeroyJ_27 (AO2), Linus_30 (AR), Lymara_30 (AR), Martha_27 (AO2), Mordred_30 (AR), MoyaNatalis_30 (AR), NathanVaag_25 (AO1), Piccoletto_25 (AO1), Pippa_27 (AO2), PrincessTrina_30 (AR), RosiePosie_30 (AR), Scavito_30 (AR), StevieBAY_27 (AO2), Timinator_27 (AO2), Tophat_30 (AR),

Start 11:

- Found in 7 of 51 (13.7%) of genes in pham
- Manual Annotations of this start: 7 of 47
- Called 100.0% of time when present
- Phage (with cluster) where this start called: Grekaycon_27 (AO2), JKerns_27 (AO2), Jordan_27 (AO2), Shade_27 (AO2), Sonny_27 (AO2), TaeYoung_27 (AO2), Zartrosa_27 (AO2),

Start 13:

- Found in 3 of 51 (5.9%) of genes in pham
- Manual Annotations of this start: 3 of 47
- Called 100.0% of time when present
- Phage (with cluster) where this start called: Abba_26 (AO3), Sicarius2_28 (AO2), Wyborn_28 (AO2),

Start 15:

- Found in 1 of 51 (2.0%) of genes in pham
- Manual Annotations of this start: 1 of 47
- Called 100.0% of time when present
- Phage (with cluster) where this start called: EastWest_28 (AO),

Summary by clusters:

There are 6 clusters represented in this pham: AO, AR, AO3, AO2, AO1, FH,

Info for manual annotations of cluster AO:

- Start number 15 was manually annotated 1 time for cluster AO.

Info for manual annotations of cluster AO1:

- Start number 5 was manually annotated 7 times for cluster AO1.

Info for manual annotations of cluster AO2:

- Start number 5 was manually annotated 7 times for cluster AO2.
- Start number 11 was manually annotated 7 times for cluster AO2.
- Start number 13 was manually annotated 2 times for cluster AO2.

Info for manual annotations of cluster AO3:

- Start number 13 was manually annotated 1 time for cluster AO3.

Info for manual annotations of cluster AR:

- Start number 5 was manually annotated 18 times for cluster AR.

Info for manual annotations of cluster FH:

- Start number 3 was manually annotated 4 times for cluster FH.

Gene Information:

Gene: Abba_26 Start: 23181, Stop: 23465, Start Num: 13

Candidate Starts for Abba_26:

(1, 22956), (2, 22974), (Start: 13 @23181 has 3 MA's), (20, 23205), (23, 23217), (32, 23292), (43, 23367), (46, 23388), (52, 23433),

Gene: BarretLemon_27 Start: 23327, Stop: 23740, Start Num: 5

Candidate Starts for BarretLemon_27:

(Start: 5 @23327 has 32 MA's), (9, 23366), (18, 23417), (25, 23447), (32, 23513), (42, 23585),

Gene: Beans_25 Start: 22993, Stop: 23403, Start Num: 5

Candidate Starts for Beans_25:

(Start: 5 @22993 has 32 MA's), (8, 23026), (17, 23077), (18, 23080), (21, 23092), (22, 23098), (26, 23113), (28, 23131), (30, 23170), (38, 23209), (40, 23230), (45, 23269),

Gene: Bolt007_27 Start: 21400, Stop: 21801, Start Num: 3

Candidate Starts for Bolt007_27:

(Start: 3 @21400 has 4 MA's), (31, 21592), (51, 21721), (52, 21733),

Gene: BossLady_27 Start: 23304, Stop: 23711, Start Num: 5

Candidate Starts for BossLady_27:

(Start: 5 @23304 has 32 MA's), (14, 23370), (18, 23394), (29, 23472), (32, 23490), (39, 23529), (42, 23562), (44, 23568),

Gene: Brent_25 Start: 22975, Stop: 23376, Start Num: 5

Candidate Starts for Brent_25:

(Start: 5 @22975 has 32 MA's), (8, 23008), (19, 23065), (21, 23074), (28, 23113), (30, 23152), (45, 23251),

Gene: CalWood4100_28 Start: 21390, Stop: 21791, Start Num: 3

Candidate Starts for CalWood4100_28:

(Start: 3 @21390 has 4 MA's), (51, 21711), (52, 21723),

Gene: Chipper1996_300 Start: 26146, Stop: 26550, Start Num: 5

Candidate Starts for Chipper1996_300:

(Start: 5 @26146 has 32 MA's), (7, 26176), (8, 26179), (27, 26269), (28, 26284), (32, 26329), (42, 26401), (48, 26440), (50, 26455),

Gene: Chocolat_30 Start: 26146, Stop: 26550, Start Num: 5

Candidate Starts for Chocolat_30:

(Start: 5 @26146 has 32 MA's), (7, 26176), (8, 26179), (27, 26269), (28, 26284), (32, 26329), (42, 26401), (48, 26440), (50, 26455),

Gene: Chubster_30 Start: 25917, Stop: 26321, Start Num: 5

Candidate Starts for Chubster_30:

(Start: 5 @25917 has 32 MA's), (7, 25947), (8, 25950), (27, 26040), (28, 26055), (32, 26100), (42, 26172), (48, 26211), (50, 26226),

Gene: Colucci_29 Start: 25615, Stop: 26019, Start Num: 5

Candidate Starts for Colucci_29:

(Start: 5 @25615 has 32 MA's), (6, 25639), (8, 25648), (17, 25699), (18, 25702), (22, 25720), (25, 25732), (28, 25753), (33, 25807), (50, 25924), (54, 25984),

Gene: Conboy_30 Start: 26145, Stop: 26549, Start Num: 5

Candidate Starts for Conboy_30:

(Start: 5 @26145 has 32 MA's), (7, 26175), (8, 26178), (27, 26268), (28, 26283), (32, 26328), (42, 26400), (48, 26439), (50, 26454),

Gene: DrYang_30 Start: 27237, Stop: 27644, Start Num: 5

Candidate Starts for DrYang_30:

(4, 27234), (Start: 5 @27237 has 32 MA's), (6, 27261), (7, 27267), (8, 27270), (10, 27276), (16, 27315), (17, 27321), (19, 27327), (20, 27333), (26, 27357), (28, 27375), (33, 27429), (39, 27459), (41, 27477), (48, 27531), (50, 27546),

Gene: EastWest_28 Start: 23262, Stop: 23588, Start Num: 15

Candidate Starts for EastWest_28:

(Start: 15 @23262 has 1 MA's), (25, 23307), (32, 23373), (47, 23478), (49, 23493), (50, 23499), (55, 23553),

Gene: EdgarPoe_30 Start: 26145, Stop: 26549, Start Num: 5

Candidate Starts for EdgarPoe_30:

(Start: 5 @26145 has 32 MA's), (7, 26175), (8, 26178), (27, 26268), (28, 26283), (32, 26328), (42, 26400), (48, 26439), (50, 26454),

Gene: Franzy_25 Start: 22974, Stop: 23375, Start Num: 5
Candidate Starts for Franzy_25:
(Start: 5 @22974 has 32 MA's), (8, 23007), (19, 23064), (21, 23073), (28, 23112), (30, 23151), (45, 23250),

Gene: GravityBall_27 Start: 23326, Stop: 23739, Start Num: 5
Candidate Starts for GravityBall_27:
(Start: 5 @23326 has 32 MA's), (9, 23365), (18, 23416), (25, 23446), (32, 23512), (42, 23584),

Gene: Grekaycon_27 Start: 23301, Stop: 23657, Start Num: 11
Candidate Starts for Grekaycon_27:
(Start: 11 @23301 has 7 MA's), (24, 23370), (35, 23457), (36, 23463), (39, 23478), (45, 23532),

Gene: HumptyDumpty_30 Start: 26144, Stop: 26548, Start Num: 5
Candidate Starts for HumptyDumpty_30:
(Start: 5 @26144 has 32 MA's), (7, 26174), (8, 26177), (27, 26267), (28, 26282), (32, 26327), (42, 26399), (48, 26438), (50, 26453),

Gene: JKerns_27 Start: 23328, Stop: 23684, Start Num: 11
Candidate Starts for JKerns_27:
(Start: 11 @23328 has 7 MA's), (24, 23397), (35, 23484), (36, 23490), (39, 23505), (45, 23559),

Gene: JaNo_30 Start: 26144, Stop: 26548, Start Num: 5
Candidate Starts for JaNo_30:
(Start: 5 @26144 has 32 MA's), (7, 26174), (8, 26177), (27, 26267), (28, 26282), (32, 26327), (42, 26399), (48, 26438), (50, 26453),

Gene: Jawnski_25 Start: 22988, Stop: 23398, Start Num: 5
Candidate Starts for Jawnski_25:
(Start: 5 @22988 has 32 MA's), (8, 23021), (17, 23072), (18, 23075), (21, 23087), (26, 23108), (28, 23126), (30, 23165), (40, 23225), (45, 23264),

Gene: JayCookie_30 Start: 26147, Stop: 26551, Start Num: 5
Candidate Starts for JayCookie_30:
(Start: 5 @26147 has 32 MA's), (7, 26177), (8, 26180), (27, 26270), (28, 26285), (32, 26330), (42, 26402), (48, 26441), (50, 26456),

Gene: Jordan_27 Start: 23298, Stop: 23654, Start Num: 11
Candidate Starts for Jordan_27:
(Start: 11 @23298 has 7 MA's), (24, 23367), (35, 23454), (36, 23460), (39, 23475), (45, 23529),

Gene: KBurrousTX_30 Start: 27067, Stop: 27471, Start Num: 5
Candidate Starts for KBurrousTX_30:
(4, 27064), (Start: 5 @27067 has 32 MA's), (6, 27091), (7, 27097), (8, 27100), (9, 27103), (12, 27124), (16, 27145), (17, 27151), (19, 27157), (28, 27205), (41, 27307), (53, 27418),

Gene: Kabreeze_30 Start: 26144, Stop: 26548, Start Num: 5
Candidate Starts for Kabreeze_30:
(Start: 5 @26144 has 32 MA's), (7, 26174), (8, 26177), (27, 26267), (28, 26282), (32, 26327), (42, 26399), (48, 26438), (50, 26453),

Gene: King2_25 Start: 22993, Stop: 23403, Start Num: 5
Candidate Starts for King2_25:

(Start: 5 @22993 has 32 MA's), (8, 23026), (18, 23080), (21, 23092), (26, 23113), (28, 23131), (30, 23170), (45, 23269),

Gene: Klevey_27 Start: 21400, Stop: 21801, Start Num: 3

Candidate Starts for Klevey_27:

(Start: 3 @21400 has 4 MA's), (51, 21721), (52, 21733),

Gene: LeeroyJ_27 Start: 23326, Stop: 23739, Start Num: 5

Candidate Starts for LeeroyJ_27:

(Start: 5 @23326 has 32 MA's), (9, 23365), (18, 23416), (25, 23446), (32, 23512), (42, 23584),

Gene: Lilmac1015_28 Start: 21390, Stop: 21791, Start Num: 3

Candidate Starts for Lilmac1015_28:

(Start: 3 @21390 has 4 MA's), (51, 21711), (52, 21723),

Gene: Linus_30 Start: 26144, Stop: 26548, Start Num: 5

Candidate Starts for Linus_30:

(Start: 5 @26144 has 32 MA's), (7, 26174), (8, 26177), (27, 26267), (28, 26282), (32, 26327), (42, 26399), (48, 26438),

Gene: Lymara_30 Start: 26142, Stop: 26546, Start Num: 5

Candidate Starts for Lymara_30:

(Start: 5 @26142 has 32 MA's), (7, 26172), (8, 26175), (18, 26229), (28, 26280), (32, 26325), (38, 26358), (42, 26397), (48, 26436), (50, 26451),

Gene: Martha_27 Start: 23251, Stop: 23658, Start Num: 5

Candidate Starts for Martha_27:

(Start: 5 @23251 has 32 MA's), (14, 23317), (18, 23341), (29, 23419), (32, 23437), (39, 23476), (42, 23509), (44, 23515),

Gene: Mordred_30 Start: 26144, Stop: 26548, Start Num: 5

Candidate Starts for Mordred_30:

(Start: 5 @26144 has 32 MA's), (7, 26174), (8, 26177), (27, 26267), (28, 26282), (32, 26327), (42, 26399), (48, 26438), (50, 26453),

Gene: MoyaNatalis_30 Start: 26147, Stop: 26551, Start Num: 5

Candidate Starts for MoyaNatalis_30:

(Start: 5 @26147 has 32 MA's), (7, 26177), (8, 26180), (27, 26270), (28, 26285), (32, 26330), (42, 26402), (48, 26441), (50, 26456),

Gene: NathanVaag_25 Start: 22969, Stop: 23379, Start Num: 5

Candidate Starts for NathanVaag_25:

(Start: 5 @22969 has 32 MA's), (8, 23002), (17, 23053), (18, 23056), (26, 23089), (28, 23107), (30, 23146), (40, 23206), (45, 23245),

Gene: Piccoletto_25 Start: 22968, Stop: 23378, Start Num: 5

Candidate Starts for Piccoletto_25:

(Start: 5 @22968 has 32 MA's), (8, 23001), (17, 23052), (18, 23055), (26, 23088), (28, 23106), (30, 23145), (40, 23205), (45, 23244),

Gene: Pippa_27 Start: 23349, Stop: 23783, Start Num: 5

Candidate Starts for Pippa_27:

(Start: 5 @23349 has 32 MA's), (14, 23415), (18, 23439), (29, 23517), (32, 23535), (42, 23607), (46, 23631),

Gene: Prairie_26 Start: 21418, Stop: 21819, Start Num: 3

Candidate Starts for Prairie_26:

(Start: 3 @21418 has 4 MA's), (51, 21739), (52, 21751),

Gene: PrincessTrina_30 Start: 26147, Stop: 26551, Start Num: 5

Candidate Starts for PrincessTrina_30:

(Start: 5 @26147 has 32 MA's), (7, 26177), (8, 26180), (27, 26270), (28, 26285), (32, 26330), (42, 26402), (48, 26441), (50, 26456),

Gene: RosiePosie_30 Start: 26147, Stop: 26551, Start Num: 5

Candidate Starts for RosiePosie_30:

(Start: 5 @26147 has 32 MA's), (7, 26177), (8, 26180), (27, 26270), (28, 26285), (32, 26330), (42, 26402), (48, 26441), (50, 26456),

Gene: Scavito_30 Start: 26144, Stop: 26548, Start Num: 5

Candidate Starts for Scavito_30:

(Start: 5 @26144 has 32 MA's), (7, 26174), (8, 26177), (27, 26267), (28, 26282), (32, 26327), (42, 26399), (48, 26438), (50, 26453),

Gene: Shade_27 Start: 23277, Stop: 23633, Start Num: 11

Candidate Starts for Shade_27:

(Start: 11 @23277 has 7 MA's), (24, 23346), (35, 23433), (36, 23439), (39, 23454), (45, 23508),

Gene: Sicarius2_28 Start: 23710, Stop: 24018, Start Num: 13

Candidate Starts for Sicarius2_28:

(Start: 13 @23710 has 3 MA's), (20, 23734), (23, 23746), (32, 23821), (34, 23833), (37, 23851), (43, 23896), (47, 23926), (49, 23941), (52, 23962),

Gene: Sonny_27 Start: 23298, Stop: 23654, Start Num: 11

Candidate Starts for Sonny_27:

(Start: 11 @23298 has 7 MA's), (24, 23367), (35, 23454), (36, 23460), (39, 23475), (45, 23529),

Gene: StevieBAY_27 Start: 23326, Stop: 23739, Start Num: 5

Candidate Starts for StevieBAY_27:

(Start: 5 @23326 has 32 MA's), (9, 23365), (18, 23416), (25, 23446), (32, 23512), (42, 23584),

Gene: TaeYoung_27 Start: 23302, Stop: 23658, Start Num: 11

Candidate Starts for TaeYoung_27:

(Start: 11 @23302 has 7 MA's), (24, 23371), (35, 23458), (36, 23464), (39, 23479), (45, 23533),

Gene: Timinator_27 Start: 23326, Stop: 23739, Start Num: 5

Candidate Starts for Timinator_27:

(Start: 5 @23326 has 32 MA's), (9, 23365), (18, 23416), (25, 23446), (32, 23512), (42, 23584),

Gene: Tophat_30 Start: 26146, Stop: 26550, Start Num: 5

Candidate Starts for Tophat_30:

(Start: 5 @26146 has 32 MA's), (7, 26176), (8, 26179), (27, 26269), (28, 26284), (32, 26329), (42, 26401), (48, 26440), (50, 26455),

Gene: Wyborn_28 Start: 23685, Stop: 23987, Start Num: 13

Candidate Starts for Wyborn_28:

(Start: 13 @23685 has 3 MA's), (27, 23736), (32, 23796), (34, 23808), (43, 23871), (49, 23916), (52, 23937),

Gene: Zartrosa_27 Start: 23301, Stop: 23657, Start Num: 11

Candidate Starts for Zartrosa_27:

(Start: 11 @23301 has 7 MA's), (24, 23370), (35, 23457), (36, 23463), (39, 23478), (45, 23532),