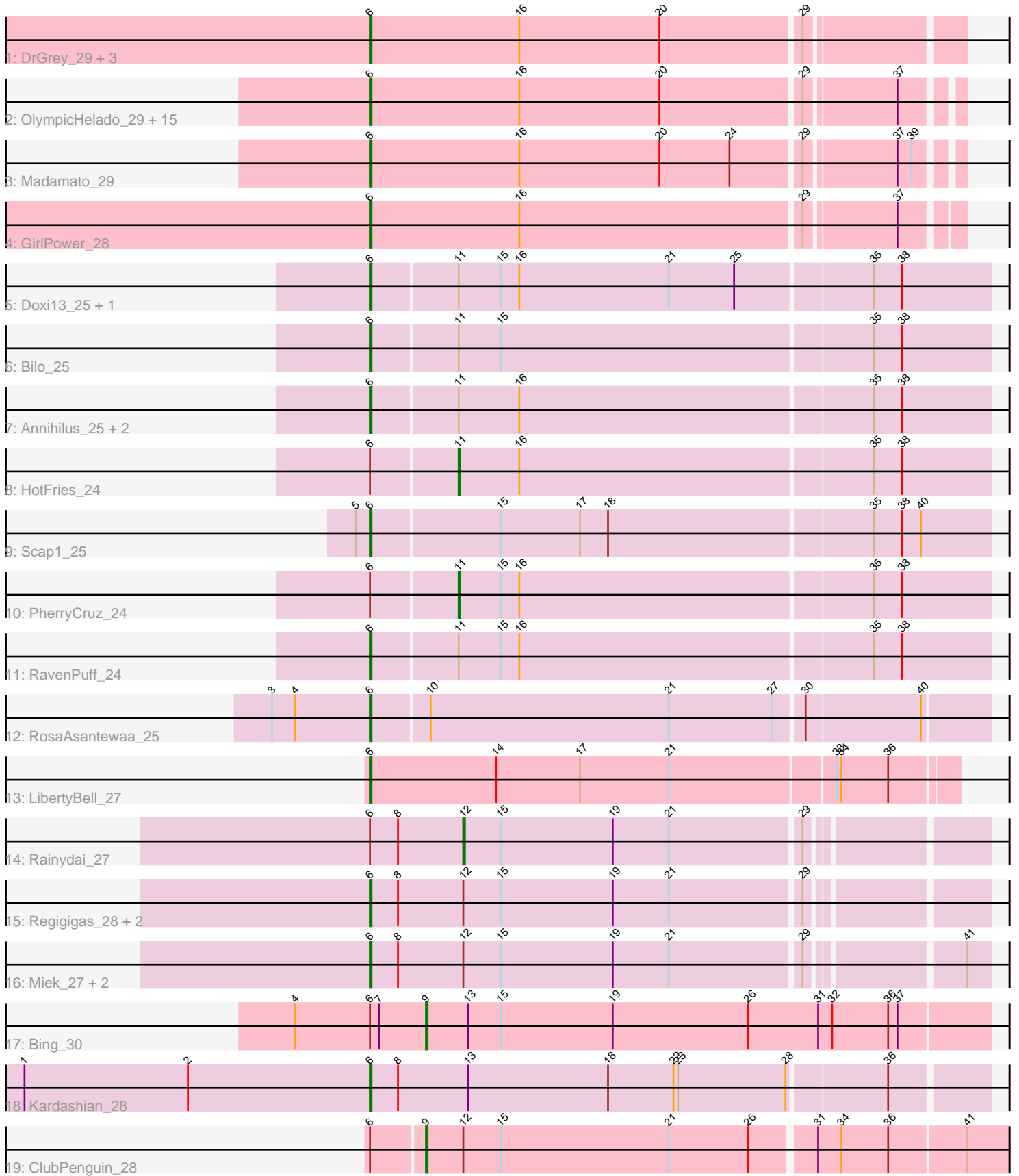


Pham 156477



Note: Tracks are now grouped by subcluster and scaled. Switching in subcluster is indicated by changes in track color. Track scale is now set by default to display the region 30 bp upstream of start 1 to 30 bp downstream of the last possible start. If this default region is judged to be packed too tightly with annotated starts, the track will be further scaled to only show that region of the ORF with annotated starts. This action will be indicated by adding "Zoomed" to the title. For starts, yellow indicates the location of called starts comprised solely of Glimmer/GeneMark auto-annotations, green indicates the location of called starts with at least 1 manual gene annotation.

Pham 156477 Report

This analysis was run 04/12/24 on database version 558.

Pham number 156477 has 44 members, 2 are drafts.

Phages represented in each track:

- Track 1 : DrGrey_29, Popy_29, Soshi_29, FrodoSwaggins_29
- Track 2 : OlympicHelado_29, Jaylociraptor_29, Hoshi_29, IceWarrior_29, Indigenous_29, FidgetOrca_29, CherryBlossom_29, TaidaOne_29, Rima_29, Esketit_29, Namu_29, TonyStarch_29, Spectropatronm_29, Maya_29, Meibysrarus_29, TieDye_28
- Track 3 : Madamato_29
- Track 4 : GirlPower_28
- Track 5 : Doxi13_25, GoblinVoyage_25
- Track 6 : Bilo_25
- Track 7 : Annihilus_25, Moozy_25, SheRa_25
- Track 8 : HotFries_24
- Track 9 : Scap1_25
- Track 10 : PherryCruz_24
- Track 11 : RavenPuff_24
- Track 12 : RosaAsantewaa_25
- Track 13 : LibertyBell_27
- Track 14 : Rainydai_27
- Track 15 : Regigigas_28, CricKo_27, Thiqqums_27
- Track 16 : Miek_27, FromIndy_28, SendItCS_26
- Track 17 : Bing_30
- Track 18 : Kardashian_28
- Track 19 : ClubPenguin_28

Summary of Final Annotations (See graph section above for start numbers):

The start number called the most often in the published annotations is 6, it was called in 37 of the 42 non-draft genes in the pham.

Genes that call this "Most Annotated" start:

- Annihilus_25, Bilo_25, CherryBlossom_29, CricKo_27, Doxi13_25, DrGrey_29, Esketit_29, FidgetOrca_29, FrodoSwaggins_29, FromIndy_28, GirlPower_28, GoblinVoyage_25, Hoshi_29, IceWarrior_29, Indigenous_29, Jaylociraptor_29, Kardashian_28, LibertyBell_27, Madamato_29, Maya_29, Meibysrarus_29, Miek_27, Moozy_25, Namu_29, OlympicHelado_29, Popy_29, RavenPuff_24, Regigigas_28,

Rima_29, RosaAsantewaa_25, Scap1_25, SendItCS_26, SheRa_25, Soshi_29, Spectropatronm_29, TaidaOne_29, Thiqqums_27, TieDye_28, TonyStarch_29,

Genes that have the "Most Annotated" start but do not call it:

- Bing_30, ClubPenguin_28, HotFries_24, PherryCruz_24, Rainydai_27,

Genes that do not have the "Most Annotated" start:

-

Summary by start number:

Start 6:

- Found in 44 of 44 (100.0%) of genes in pham
- Manual Annotations of this start: 37 of 42
- Called 88.6% of time when present
- Phage (with cluster) where this start called: Annihilus_25 (BI2), Bilo_25 (BI2), CherryBlossom_29 (BI1), CricKo_27 (BI4), Doxi13_25 (BI2), DrGrey_29 (BI1), Esketit_29 (BI1), FidgetOrca_29 (BI1), FrodoSwaggins_29 (BI1), FromIndy_28 (BI4), GirlPower_28 (BI1), GoblinVoyage_25 (BI2), Hoshi_29 (BI1), IceWarrior_29 (BI1), Indigenous_29 (BI1), Jaylociraptor_29 (BI1), Kardashian_28 (BI6), LibertyBell_27 (BI3), Madamato_29 (BI1), Maya_29 (BI1), Meibysrarus_29 (BI1), Miek_27 (BI4), Moozy_25 (BI2), Namu_29 (BI1), OlympicHelado_29 (BI1), Popy_29 (BI1), RavenPuff_24 (BI2), Regigigas_28 (BI4), Rima_29 (BI1), RosaAsantewaa_25 (BI2), Scap1_25 (BI2), SendItCS_26 (BI4), SheRa_25 (BI2), Soshi_29 (BI1), Spectropatronm_29 (BI1), TaidaOne_29 (BI1), Thiqqums_27 (BI4), TieDye_28 (BI1), TonyStarch_29 (BI1),

Start 9:

- Found in 2 of 44 (4.5%) of genes in pham
- Manual Annotations of this start: 2 of 42
- Called 100.0% of time when present
- Phage (with cluster) where this start called: Bing_30 (BI5), ClubPenguin_28 (BI7),

Start 11:

- Found in 9 of 44 (20.5%) of genes in pham
- Manual Annotations of this start: 2 of 42
- Called 22.2% of time when present
- Phage (with cluster) where this start called: HotFries_24 (BI2), PherryCruz_24 (BI2),

Start 12:

- Found in 8 of 44 (18.2%) of genes in pham
- Manual Annotations of this start: 1 of 42
- Called 12.5% of time when present
- Phage (with cluster) where this start called: Rainydai_27 (BI4),

Summary by clusters:

There are 7 clusters represented in this pham: BI6, BI7, BI4, BI5, BI2, BI3, BI1,

Info for manual annotations of cluster BI1:

- Start number 6 was manually annotated 22 times for cluster BI1.

Info for manual annotations of cluster BI2:

- Start number 6 was manually annotated 9 times for cluster BI2.
- Start number 11 was manually annotated 2 times for cluster BI2.

Info for manual annotations of cluster BI3:

- Start number 6 was manually annotated 1 time for cluster BI3.

Info for manual annotations of cluster BI4:

- Start number 6 was manually annotated 4 times for cluster BI4.
- Start number 12 was manually annotated 1 time for cluster BI4.

Info for manual annotations of cluster BI5:

- Start number 9 was manually annotated 1 time for cluster BI5.

Info for manual annotations of cluster BI6:

- Start number 6 was manually annotated 1 time for cluster BI6.

Info for manual annotations of cluster BI7:

- Start number 9 was manually annotated 1 time for cluster BI7.

Gene Information:

Gene: Annihilus_25 Start: 22331, Stop: 22720, Start Num: 6

Candidate Starts for Annihilus_25:

(Start: 6 @22331 has 37 MA's), (Start: 11 @22385 has 2 MA's), (16, 22424), (35, 22646), (38, 22664),

Gene: Bilo_25 Start: 22822, Stop: 23211, Start Num: 6

Candidate Starts for Bilo_25:

(Start: 6 @22822 has 37 MA's), (Start: 11 @22876 has 2 MA's), (15, 22903), (35, 23137), (38, 23155),

Gene: Bing_30 Start: 25162, Stop: 25521, Start Num: 9

Candidate Starts for Bing_30:

(4, 25078), (Start: 6 @25126 has 37 MA's), (7, 25132), (Start: 9 @25162 has 2 MA's), (13, 25189), (15, 25210), (19, 25282), (26, 25369), (31, 25414), (32, 25423), (36, 25459), (37, 25465),

Gene: CherryBlossom_29 Start: 25276, Stop: 25635, Start Num: 6

Candidate Starts for CherryBlossom_29:

(Start: 6 @25276 has 37 MA's), (16, 25372), (20, 25462), (29, 25549), (37, 25603),

Gene: ClubPenguin_28 Start: 24936, Stop: 25301, Start Num: 9

Candidate Starts for ClubPenguin_28:

(Start: 6 @24903 has 37 MA's), (Start: 9 @24936 has 2 MA's), (Start: 12 @24960 has 1 MA's), (15, 24984), (21, 25092), (26, 25143), (31, 25182), (34, 25197), (36, 25227), (41, 25275),

Gene: CricKo_27 Start: 24163, Stop: 24540, Start Num: 6

Candidate Starts for CricKo_27:

(Start: 6 @24163 has 37 MA's), (8, 24181), (Start: 12 @24223 has 1 MA's), (15, 24247), (19, 24319), (21, 24355), (29, 24436),

Gene: Doxi13_25 Start: 22302, Stop: 22691, Start Num: 6

Candidate Starts for Doxi13_25:

(Start: 6 @22302 has 37 MA's), (Start: 11 @22356 has 2 MA's), (15, 22383), (16, 22395), (21, 22491), (25, 22533), (35, 22617), (38, 22635),

Gene: DrGrey_29 Start: 25776, Stop: 26141, Start Num: 6

Candidate Starts for DrGrey_29:

(Start: 6 @25776 has 37 MA's), (16, 25872), (20, 25962), (29, 26049),

Gene: Esketit_29 Start: 25259, Stop: 25618, Start Num: 6

Candidate Starts for Esketit_29:

(Start: 6 @25259 has 37 MA's), (16, 25355), (20, 25445), (29, 25532), (37, 25586),

Gene: FidgetOrca_29 Start: 25265, Stop: 25624, Start Num: 6

Candidate Starts for FidgetOrca_29:

(Start: 6 @25265 has 37 MA's), (16, 25361), (20, 25451), (29, 25538), (37, 25592),

Gene: FrodoSwaggins_29 Start: 25776, Stop: 26141, Start Num: 6

Candidate Starts for FrodoSwaggins_29:

(Start: 6 @25776 has 37 MA's), (16, 25872), (20, 25962), (29, 26049),

Gene: FromIndy_28 Start: 24151, Stop: 24528, Start Num: 6

Candidate Starts for FromIndy_28:

(Start: 6 @24151 has 37 MA's), (8, 24169), (Start: 12 @24211 has 1 MA's), (15, 24235), (19, 24307), (21, 24343), (29, 24424), (41, 24514),

Gene: GirlPower_28 Start: 26747, Stop: 27109, Start Num: 6

Candidate Starts for GirlPower_28:

(Start: 6 @26747 has 37 MA's), (16, 26843), (29, 27020), (37, 27074),

Gene: GoblinVoyage_25 Start: 22302, Stop: 22691, Start Num: 6

Candidate Starts for GoblinVoyage_25:

(Start: 6 @22302 has 37 MA's), (Start: 11 @22356 has 2 MA's), (15, 22383), (16, 22395), (21, 22491), (25, 22533), (35, 22617), (38, 22635),

Gene: Hoshi_29 Start: 25259, Stop: 25618, Start Num: 6

Candidate Starts for Hoshi_29:

(Start: 6 @25259 has 37 MA's), (16, 25355), (20, 25445), (29, 25532), (37, 25586),

Gene: HotFries_24 Start: 22355, Stop: 22690, Start Num: 11

Candidate Starts for HotFries_24:

(Start: 6 @22301 has 37 MA's), (Start: 11 @22355 has 2 MA's), (16, 22394), (35, 22616), (38, 22634),

Gene: IceWarrior_29 Start: 25259, Stop: 25618, Start Num: 6

Candidate Starts for IceWarrior_29:

(Start: 6 @25259 has 37 MA's), (16, 25355), (20, 25445), (29, 25532), (37, 25586),

Gene: Indigenous_29 Start: 25259, Stop: 25618, Start Num: 6

Candidate Starts for Indigenous_29:

(Start: 6 @25259 has 37 MA's), (16, 25355), (20, 25445), (29, 25532), (37, 25586),

Gene: Jaylociraptor_29 Start: 25259, Stop: 25618, Start Num: 6

Candidate Starts for Jaylociraptor_29:

(Start: 6 @25259 has 37 MA's), (16, 25355), (20, 25445), (29, 25532), (37, 25586),

Gene: Kardashian_28 Start: 25209, Stop: 25595, Start Num: 6

Candidate Starts for Kardashian_28:

(1, 24987), (2, 25092), (Start: 6 @25209 has 37 MA's), (8, 25227), (13, 25272), (18, 25362), (22, 25404), (23, 25407), (28, 25476), (36, 25536),

Gene: LibertyBell_27 Start: 24107, Stop: 24475, Start Num: 6

Candidate Starts for LibertyBell_27:

(Start: 6 @24107 has 37 MA's), (14, 24188), (17, 24242), (21, 24299), (33, 24401), (34, 24404), (36, 24434),

Gene: Madamoto_29 Start: 25237, Stop: 25596, Start Num: 6

Candidate Starts for Madamoto_29:

(Start: 6 @25237 has 37 MA's), (16, 25333), (20, 25423), (24, 25468), (29, 25510), (37, 25564), (39, 25573),

Gene: Maya_29 Start: 25273, Stop: 25632, Start Num: 6

Candidate Starts for Maya_29:

(Start: 6 @25273 has 37 MA's), (16, 25369), (20, 25459), (29, 25546), (37, 25600),

Gene: Meibysrarus_29 Start: 25259, Stop: 25618, Start Num: 6

Candidate Starts for Meibysrarus_29:

(Start: 6 @25259 has 37 MA's), (16, 25355), (20, 25445), (29, 25532), (37, 25586),

Gene: Miek_27 Start: 24163, Stop: 24540, Start Num: 6

Candidate Starts for Miek_27:

(Start: 6 @24163 has 37 MA's), (8, 24181), (Start: 12 @24223 has 1 MA's), (15, 24247), (19, 24319), (21, 24355), (29, 24436), (41, 24526),

Gene: Moozy_25 Start: 22318, Stop: 22707, Start Num: 6

Candidate Starts for Moozy_25:

(Start: 6 @22318 has 37 MA's), (Start: 11 @22372 has 2 MA's), (16, 22411), (35, 22633), (38, 22651),

Gene: Namo_29 Start: 25265, Stop: 25624, Start Num: 6

Candidate Starts for Namo_29:

(Start: 6 @25265 has 37 MA's), (16, 25361), (20, 25451), (29, 25538), (37, 25592),

Gene: OlympicHelado_29 Start: 25265, Stop: 25624, Start Num: 6

Candidate Starts for OlympicHelado_29:

(Start: 6 @25265 has 37 MA's), (16, 25361), (20, 25451), (29, 25538), (37, 25592),

Gene: PherryCruz_24 Start: 22357, Stop: 22692, Start Num: 11

Candidate Starts for PherryCruz_24:

(Start: 6 @22303 has 37 MA's), (Start: 11 @22357 has 2 MA's), (15, 22384), (16, 22396), (35, 22618), (38, 22636),

Gene: Popy_29 Start: 25776, Stop: 26141, Start Num: 6

Candidate Starts for Popy_29:

(Start: 6 @25776 has 37 MA's), (16, 25872), (20, 25962), (29, 26049),

Gene: Rainydai_27 Start: 24223, Stop: 24540, Start Num: 12

Candidate Starts for Rainydai_27:

(Start: 6 @24163 has 37 MA's), (8, 24181), (Start: 12 @24223 has 1 MA's), (15, 24247), (19, 24319), (21, 24355), (29, 24436),

Gene: RavenPuff_24 Start: 22303, Stop: 22692, Start Num: 6
Candidate Starts for RavenPuff_24:
(Start: 6 @22303 has 37 MA's), (Start: 11 @22357 has 2 MA's), (15, 22384), (16, 22396), (35, 22618),
(38, 22636),

Gene: Regigigas_28 Start: 24163, Stop: 24540, Start Num: 6
Candidate Starts for Regigigas_28:
(Start: 6 @24163 has 37 MA's), (8, 24181), (Start: 12 @24223 has 1 MA's), (15, 24247), (19, 24319),
(21, 24355), (29, 24436),

Gene: Rima_29 Start: 25265, Stop: 25624, Start Num: 6
Candidate Starts for Rima_29:
(Start: 6 @25265 has 37 MA's), (16, 25361), (20, 25451), (29, 25538), (37, 25592),

Gene: RosaAsantewaa_25 Start: 22174, Stop: 22560, Start Num: 6
Candidate Starts for RosaAsantewaa_25:
(3, 22111), (4, 22126), (Start: 6 @22174 has 37 MA's), (10, 22210), (21, 22363), (27, 22429), (30,
22447), (40, 22519),

Gene: Scap1_25 Start: 22251, Stop: 22640, Start Num: 6
Candidate Starts for Scap1_25:
(5, 22242), (Start: 6 @22251 has 37 MA's), (15, 22332), (17, 22383), (18, 22401), (35, 22566), (38,
22584), (40, 22596),

Gene: SendItCS_26 Start: 24163, Stop: 24540, Start Num: 6
Candidate Starts for SendItCS_26:
(Start: 6 @24163 has 37 MA's), (8, 24181), (Start: 12 @24223 has 1 MA's), (15, 24247), (19, 24319),
(21, 24355), (29, 24436), (41, 24526),

Gene: SheRa_25 Start: 22302, Stop: 22691, Start Num: 6
Candidate Starts for SheRa_25:
(Start: 6 @22302 has 37 MA's), (Start: 11 @22356 has 2 MA's), (16, 22395), (35, 22617), (38, 22635),

Gene: Soshi_29 Start: 25782, Stop: 26147, Start Num: 6
Candidate Starts for Soshi_29:
(Start: 6 @25782 has 37 MA's), (16, 25878), (20, 25968), (29, 26055),

Gene: Spectropatronm_29 Start: 25259, Stop: 25618, Start Num: 6
Candidate Starts for Spectropatronm_29:
(Start: 6 @25259 has 37 MA's), (16, 25355), (20, 25445), (29, 25532), (37, 25586),

Gene: TaidaOne_29 Start: 25907, Stop: 26266, Start Num: 6
Candidate Starts for TaidaOne_29:
(Start: 6 @25907 has 37 MA's), (16, 26003), (20, 26093), (29, 26180), (37, 26234),

Gene: Thiqqums_27 Start: 24163, Stop: 24540, Start Num: 6
Candidate Starts for Thiqqums_27:
(Start: 6 @24163 has 37 MA's), (8, 24181), (Start: 12 @24223 has 1 MA's), (15, 24247), (19, 24319),
(21, 24355), (29, 24436),

Gene: TieDye_28 Start: 24951, Stop: 25310, Start Num: 6
Candidate Starts for TieDye_28:

(Start: 6 @24951 has 37 MA's), (16, 25047), (20, 25137), (29, 25224), (37, 25278),

Gene: TonyStarch_29 Start: 25265, Stop: 25624, Start Num: 6

Candidate Starts for TonyStarch_29:

(Start: 6 @25265 has 37 MA's), (16, 25361), (20, 25451), (29, 25538), (37, 25592),