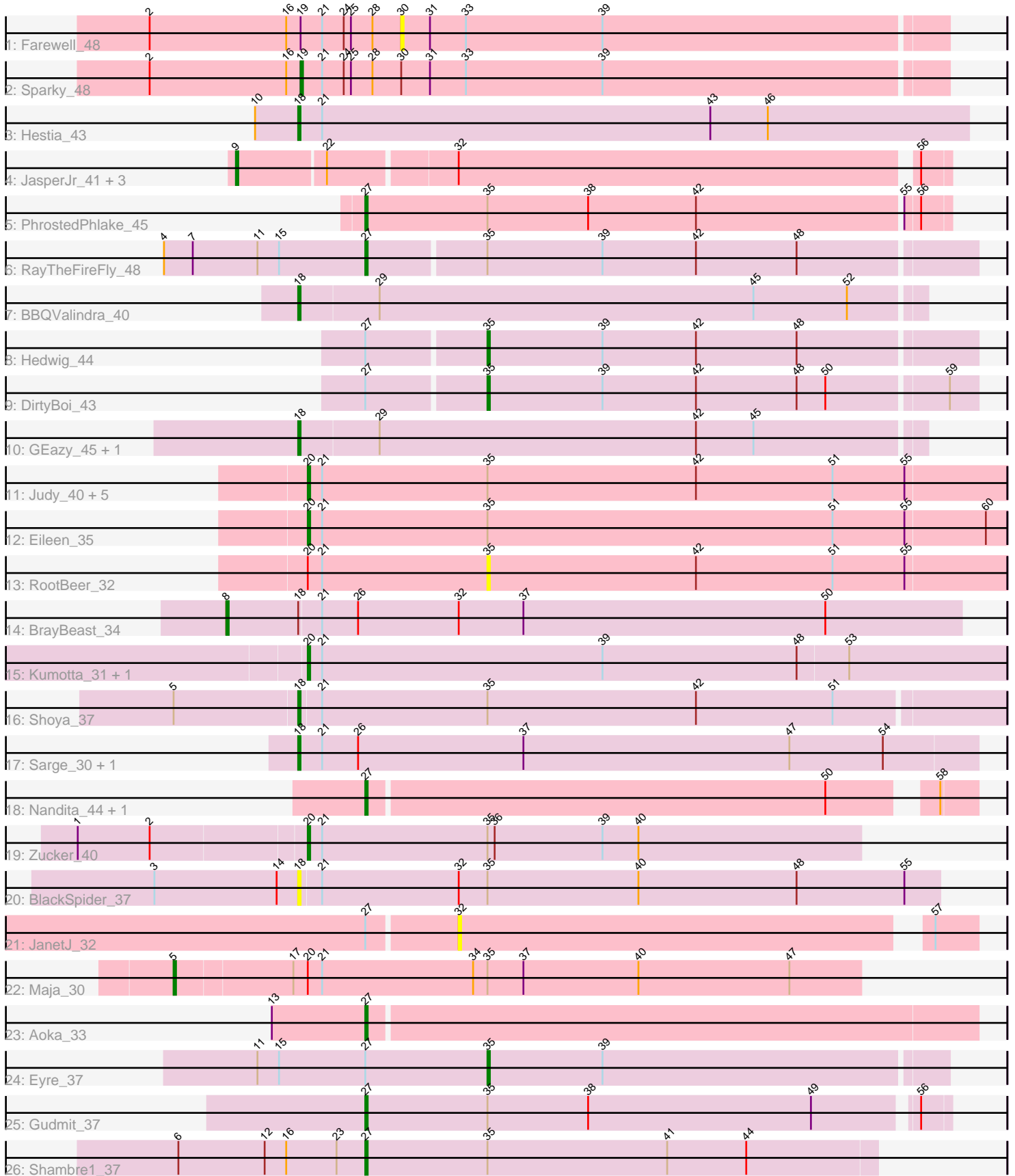


Pham 156510



Note: Tracks are now grouped by subcluster and scaled. Switching in subcluster is indicated by changes in track color. Track scale is now set by default to display the region 30 bp upstream of start 1 to 30 bp downstream of the last possible start. If this default region is judged to be packed too tightly with annotated starts, the track will be further scaled to only show that region of the ORF with annotated starts. This action will be indicated by adding "Zoomed" to the title. For starts, yellow indicates the location of called starts comprised solely of Glimmer/GeneMark auto-annotations, green indicates the location of called starts with at least 1 manual gene annotation.

Pham 156510 Report

This analysis was run 04/12/24 on database version 558.

Pham number 156510 has 38 members, 5 are drafts.

Phages represented in each track:

- Track 1 : Farewell_48
- Track 2 : Sparky_48
- Track 3 : Hestia_43
- Track 4 : JasperJr_41, Hitter_44, Guacamole_41, Walrus_42
- Track 5 : PhrostedPhlake_45
- Track 6 : RayTheFireFly_48
- Track 7 : BBQValindra_40
- Track 8 : Hedwig_44
- Track 9 : DirtyBoi_43
- Track 10 : GEazy_45, HannahD_43
- Track 11 : Judy_40, Constance_39, ChuckDuck_40, GlobiWarming_39, Bridgette_39, Peas_36
- Track 12 : Eileen_35
- Track 13 : RootBeer_32
- Track 14 : BrayBeast_34
- Track 15 : Kumotta_31, MargaretKali_31
- Track 16 : Shoya_37
- Track 17 : Sarge_30, Bauer_41
- Track 18 : Nandita_44, Ryan_44
- Track 19 : Zucker_40
- Track 20 : BlackSpider_37
- Track 21 : JanetJ_32
- Track 22 : Maja_30
- Track 23 : Aoka_33
- Track 24 : Eyre_37
- Track 25 : Gudmit_37
- Track 26 : Shambre1_37

Summary of Final Annotations (See graph section above for start numbers):

The start number called the most often in the published annotations is 20, it was called in 9 of the 33 non-draft genes in the pham.

Genes that call this "Most Annotated" start:

- Bridgette_39, ChuckDuck_40, Constance_39, Eileen_35, GlobiWarming_39, Judy_40, Kumotta_31, MargaretKali_31, Peas_36, Zucker_40,

Genes that have the "Most Annotated" start but do not call it:

- Maja_30, RootBeer_32,

Genes that do not have the "Most Annotated" start:

- Aoka_33, BBQValindra_40, Bauer_41, BlackSpider_37, BrayBeast_34, DirtyBoi_43, Eyre_37, Farewell_48, GEazy_45, Guacamole_41, Gudmit_37, HannahD_43, Hedwig_44, Hestia_43, Hitter_44, JanetJ_32, JasperJr_41, Nandita_44, PhrostedPhlake_45, RayTheFireFly_48, Ryan_44, Sarge_30, Shambre1_37, Shoya_37, Sparky_48, Walrus_42,

Summary by start number:

Start 5:

- Found in 2 of 38 (5.3%) of genes in pham
- Manual Annotations of this start: 1 of 33
- Called 50.0% of time when present
- Phage (with cluster) where this start called: Maja_30 (FO),

Start 8:

- Found in 1 of 38 (2.6%) of genes in pham
- Manual Annotations of this start: 1 of 33
- Called 100.0% of time when present
- Phage (with cluster) where this start called: BrayBeast_34 (FB),

Start 9:

- Found in 4 of 38 (10.5%) of genes in pham
- Manual Annotations of this start: 4 of 33
- Called 100.0% of time when present
- Phage (with cluster) where this start called: Guacamole_41 (CV), Hitter_44 (CV), JasperJr_41 (CV), Walrus_42 (CV),

Start 18:

- Found in 9 of 38 (23.7%) of genes in pham
- Manual Annotations of this start: 7 of 33
- Called 88.9% of time when present
- Phage (with cluster) where this start called: BBQValindra_40 (DB), Bauer_41 (FN), BlackSpider_37 (FN), GEazy_45 (DB), HannahD_43 (DB), Hestia_43 (AY), Sarge_30 (FB), Shoya_37 (FB),

Start 19:

- Found in 2 of 38 (5.3%) of genes in pham
- Manual Annotations of this start: 1 of 33
- Called 50.0% of time when present
- Phage (with cluster) where this start called: Sparky_48 (AF),

Start 20:

- Found in 12 of 38 (31.6%) of genes in pham
- Manual Annotations of this start: 9 of 33
- Called 83.3% of time when present

- Phage (with cluster) where this start called: Bridgette_39 (FA), ChuckDuck_40 (FA), Constance_39 (FA), Eileen_35 (FA), GlobiWarming_39 (FA), Judy_40 (FA), Kumotta_31 (FB), MargaretKali_31 (FB), Peas_36 (FA), Zucker_40 (FN),

Start 27:

- Found in 11 of 38 (28.9%) of genes in pham
- Manual Annotations of this start: 7 of 33
- Called 63.6% of time when present
- Phage (with cluster) where this start called: Aoka_33 (FO), Gudmit_37 (singleton), Nandita_44 (FF), PhrostedPhlake_45 (CV), RayTheFireFly_48 (DB), Ryan_44 (FF), Shambre1_37 (singleton),

Start 30:

- Found in 2 of 38 (5.3%) of genes in pham
- No Manual Annotations of this start.
- Called 50.0% of time when present
- Phage (with cluster) where this start called: Farewell_48 (AF),

Start 32:

- Found in 7 of 38 (18.4%) of genes in pham
- No Manual Annotations of this start.
- Called 14.3% of time when present
- Phage (with cluster) where this start called: JanetJ_32 (FO),

Start 35:

- Found in 19 of 38 (50.0%) of genes in pham
- Manual Annotations of this start: 3 of 33
- Called 21.1% of time when present
- Phage (with cluster) where this start called: DirtyBoi_43 (DB), Eyre_37 (singleton), Hedwig_44 (DB), RootBeer_32 (FA),

Summary by clusters:

There are 10 clusters represented in this pham: singleton, AF, DB, FA, FB, FF, AY, CV, FN, FO,

Info for manual annotations of cluster AF:

- Start number 19 was manually annotated 1 time for cluster AF.

Info for manual annotations of cluster AY:

- Start number 18 was manually annotated 1 time for cluster AY.

Info for manual annotations of cluster CV:

- Start number 9 was manually annotated 4 times for cluster CV.
- Start number 27 was manually annotated 1 time for cluster CV.

Info for manual annotations of cluster DB:

- Start number 18 was manually annotated 3 times for cluster DB.
- Start number 27 was manually annotated 1 time for cluster DB.
- Start number 35 was manually annotated 2 times for cluster DB.

Info for manual annotations of cluster FA:

- Start number 20 was manually annotated 6 times for cluster FA.

Info for manual annotations of cluster FB:

- Start number 8 was manually annotated 1 time for cluster FB.
- Start number 18 was manually annotated 2 times for cluster FB.
- Start number 20 was manually annotated 2 times for cluster FB.

Info for manual annotations of cluster FF:

- Start number 27 was manually annotated 2 times for cluster FF.

Info for manual annotations of cluster FN:

- Start number 18 was manually annotated 1 time for cluster FN.
- Start number 20 was manually annotated 1 time for cluster FN.

Info for manual annotations of cluster FO:

- Start number 5 was manually annotated 1 time for cluster FO.
- Start number 27 was manually annotated 1 time for cluster FO.

Gene Information:

Gene: Aoka_33 Start: 26261, Stop: 26512, Start Num: 27

Candidate Starts for Aoka_33:

(13, 26222), (Start: 27 @26261 has 7 MA's),

Gene: BBQValindra_40 Start: 33028, Stop: 33285, Start Num: 18

Candidate Starts for BBQValindra_40:

(Start: 18 @33028 has 7 MA's), (29, 33061), (45, 33217), (52, 33256),

Gene: Bauer_41 Start: 28925, Stop: 28644, Start Num: 18

Candidate Starts for Bauer_41:

(Start: 18 @28925 has 7 MA's), (21, 28916), (26, 28901), (37, 28832), (47, 28721), (54, 28682),

Gene: BlackSpider_37 Start: 28105, Stop: 27839, Start Num: 18

Candidate Starts for BlackSpider_37:

(3, 28165), (14, 28114), (Start: 18 @28105 has 7 MA's), (21, 28096), (32, 28039), (Start: 35 @28027 has 3 MA's), (40, 27964), (48, 27898), (55, 27853),

Gene: BrayBeast_34 Start: 25453, Stop: 25148, Start Num: 8

Candidate Starts for BrayBeast_34:

(Start: 8 @25453 has 1 MA's), (Start: 18 @25423 has 7 MA's), (21, 25414), (26, 25399), (32, 25357), (37, 25330), (50, 25204),

Gene: Bridgette_39 Start: 28174, Stop: 27884, Start Num: 20

Candidate Starts for Bridgette_39:

(Start: 20 @28174 has 9 MA's), (21, 28168), (Start: 35 @28099 has 3 MA's), (42, 28012), (51, 27955), (55, 27925),

Gene: ChuckDuck_40 Start: 27998, Stop: 27708, Start Num: 20

Candidate Starts for ChuckDuck_40:

(Start: 20 @27998 has 9 MA's), (21, 27992), (Start: 35 @27923 has 3 MA's), (42, 27836), (51, 27779), (55, 27749),

Gene: Constance_39 Start: 28327, Stop: 28037, Start Num: 20

Candidate Starts for Constance_39:

(Start: 20 @28327 has 9 MA's), (21, 28321), (Start: 35 @28252 has 3 MA's), (42, 28165), (51, 28108), (55, 28078),

Gene: DirtyBoi_43 Start: 31965, Stop: 32165, Start Num: 35

Candidate Starts for DirtyBoi_43:

(Start: 27 @31917 has 7 MA's), (Start: 35 @31965 has 3 MA's), (39, 32013), (42, 32052), (48, 32094), (50, 32106), (59, 32154),

Gene: Eileen_35 Start: 26405, Stop: 26115, Start Num: 20

Candidate Starts for Eileen_35:

(Start: 20 @26405 has 9 MA's), (21, 26399), (Start: 35 @26330 has 3 MA's), (51, 26186), (55, 26156), (60, 26123),

Gene: Eyre_37 Start: 28147, Stop: 28335, Start Num: 35

Candidate Starts for Eyre_37:

(11, 28051), (15, 28060), (Start: 27 @28096 has 7 MA's), (Start: 35 @28147 has 3 MA's), (39, 28195),

Gene: Farewell_48 Start: 36125, Stop: 36349, Start Num: 30

Candidate Starts for Farewell_48:

(2, 36020), (16, 36077), (Start: 19 @36083 has 1 MA's), (21, 36092), (24, 36101), (25, 36104), (28, 36113), (30, 36125), (31, 36137), (33, 36152), (39, 36209),

Gene: GEazy_45 Start: 32607, Stop: 32864, Start Num: 18

Candidate Starts for GEazy_45:

(Start: 18 @32607 has 7 MA's), (29, 32640), (42, 32772), (45, 32796),

Gene: GlobiWarming_39 Start: 27581, Stop: 27291, Start Num: 20

Candidate Starts for GlobiWarming_39:

(Start: 20 @27581 has 9 MA's), (21, 27575), (Start: 35 @27506 has 3 MA's), (42, 27419), (51, 27362), (55, 27332),

Gene: Guacamole_41 Start: 33011, Stop: 33295, Start Num: 9

Candidate Starts for Guacamole_41:

(Start: 9 @33011 has 4 MA's), (22, 33047), (32, 33098), (56, 33284),

Gene: Gudmit_37 Start: 27130, Stop: 27366, Start Num: 27

Candidate Starts for Gudmit_37:

(Start: 27 @27130 has 7 MA's), (Start: 35 @27181 has 3 MA's), (38, 27223), (49, 27316), (56, 27355),

Gene: HannahD_43 Start: 31974, Stop: 32231, Start Num: 18

Candidate Starts for HannahD_43:

(Start: 18 @31974 has 7 MA's), (29, 32007), (42, 32139), (45, 32163),

Gene: Hedwig_44 Start: 32388, Stop: 32588, Start Num: 35

Candidate Starts for Hedwig_44:

(Start: 27 @32340 has 7 MA's), (Start: 35 @32388 has 3 MA's), (39, 32436), (42, 32475), (48, 32517),

Gene: Hestia_43 Start: 28715, Stop: 28437, Start Num: 18

Candidate Starts for Hestia_43:

(10, 28733), (Start: 18 @28715 has 7 MA's), (21, 28706), (43, 28544), (46, 28520),

Gene: Hitter_44 Start: 32655, Stop: 32939, Start Num: 9
Candidate Starts for Hitter_44:
(Start: 9 @32655 has 4 MA's), (22, 32691), (32, 32742), (56, 32928),

Gene: JanetJ_32 Start: 26923, Stop: 27126, Start Num: 32
Candidate Starts for JanetJ_32:
(Start: 27 @26887 has 7 MA's), (32, 26923), (57, 27109),

Gene: JasperJr_41 Start: 33011, Stop: 33295, Start Num: 9
Candidate Starts for JasperJr_41:
(Start: 9 @33011 has 4 MA's), (22, 33047), (32, 33098), (56, 33284),

Gene: Judy_40 Start: 28493, Stop: 28203, Start Num: 20
Candidate Starts for Judy_40:
(Start: 20 @28493 has 9 MA's), (21, 28487), (Start: 35 @28418 has 3 MA's), (42, 28331), (51, 28274),
(55, 28244),

Gene: Kumotta_31 Start: 25315, Stop: 25025, Start Num: 20
Candidate Starts for Kumotta_31:
(Start: 20 @25315 has 9 MA's), (21, 25309), (39, 25192), (48, 25111), (53, 25090),

Gene: Maja_30 Start: 25873, Stop: 25589, Start Num: 5
Candidate Starts for Maja_30:
(Start: 5 @25873 has 1 MA's), (17, 25825), (Start: 20 @25819 has 9 MA's), (21, 25813), (34, 25750),
(Start: 35 @25744 has 3 MA's), (37, 25729), (40, 25681), (47, 25618),

Gene: MargaretKali_31 Start: 24950, Stop: 24660, Start Num: 20
Candidate Starts for MargaretKali_31:
(Start: 20 @24950 has 9 MA's), (21, 24944), (39, 24827), (48, 24746), (53, 24725),

Gene: Nandita_44 Start: 30213, Stop: 30452, Start Num: 27
Candidate Starts for Nandita_44:
(Start: 27 @30213 has 7 MA's), (50, 30402), (58, 30438),

Gene: Peas_36 Start: 28552, Stop: 28262, Start Num: 20
Candidate Starts for Peas_36:
(Start: 20 @28552 has 9 MA's), (21, 28546), (Start: 35 @28477 has 3 MA's), (42, 28390), (51, 28333),
(55, 28303),

Gene: PhrostedPhlake_45 Start: 32973, Stop: 33212, Start Num: 27
Candidate Starts for PhrostedPhlake_45:
(Start: 27 @32973 has 7 MA's), (Start: 35 @33024 has 3 MA's), (38, 33066), (42, 33111), (55, 33195),
(56, 33201),

Gene: RayTheFireFly_48 Start: 33514, Stop: 33762, Start Num: 27
Candidate Starts for RayTheFireFly_48:
(4, 33430), (7, 33442), (11, 33469), (15, 33478), (Start: 27 @33514 has 7 MA's), (Start: 35 @33562
has 3 MA's), (39, 33610), (42, 33649), (48, 33691),

Gene: RootBeer_32 Start: 24379, Stop: 24164, Start Num: 35
Candidate Starts for RootBeer_32:
(Start: 20 @24454 has 9 MA's), (21, 24448), (Start: 35 @24379 has 3 MA's), (42, 24292), (51, 24235),
(55, 24205),

Gene: Ryan_44 Start: 30762, Stop: 31001, Start Num: 27

Candidate Starts for Ryan_44:

(Start: 27 @30762 has 7 MA's), (50, 30951), (58, 30987),

Gene: Sarge_30 Start: 23262, Stop: 22981, Start Num: 18

Candidate Starts for Sarge_30:

(Start: 18 @23262 has 7 MA's), (21, 23253), (26, 23238), (37, 23169), (47, 23058), (54, 23019),

Gene: Shambre1_37 Start: 25536, Stop: 25748, Start Num: 27

Candidate Starts for Shambre1_37:

(6, 25458), (12, 25494), (16, 25503), (23, 25524), (Start: 27 @25536 has 7 MA's), (Start: 35 @25587 has 3 MA's), (41, 25662), (44, 25695),

Gene: Shoya_37 Start: 25648, Stop: 25358, Start Num: 18

Candidate Starts for Shoya_37:

(Start: 5 @25699 has 1 MA's), (Start: 18 @25648 has 7 MA's), (21, 25639), (Start: 35 @25570 has 3 MA's), (42, 25483), (51, 25426),

Gene: Sparky_48 Start: 36514, Stop: 36780, Start Num: 19

Candidate Starts for Sparky_48:

(2, 36451), (16, 36508), (Start: 19 @36514 has 1 MA's), (21, 36523), (24, 36532), (25, 36535), (28, 36544), (30, 36556), (31, 36568), (33, 36583), (39, 36640),

Gene: Walrus_42 Start: 32790, Stop: 33074, Start Num: 9

Candidate Starts for Walrus_42:

(Start: 9 @32790 has 4 MA's), (22, 32826), (32, 32877), (56, 33063),

Gene: Zucker_40 Start: 29401, Stop: 29171, Start Num: 20

Candidate Starts for Zucker_40:

(1, 29494), (2, 29464), (Start: 20 @29401 has 9 MA's), (21, 29395), (Start: 35 @29326 has 3 MA's), (36, 29323), (39, 29278), (40, 29263),