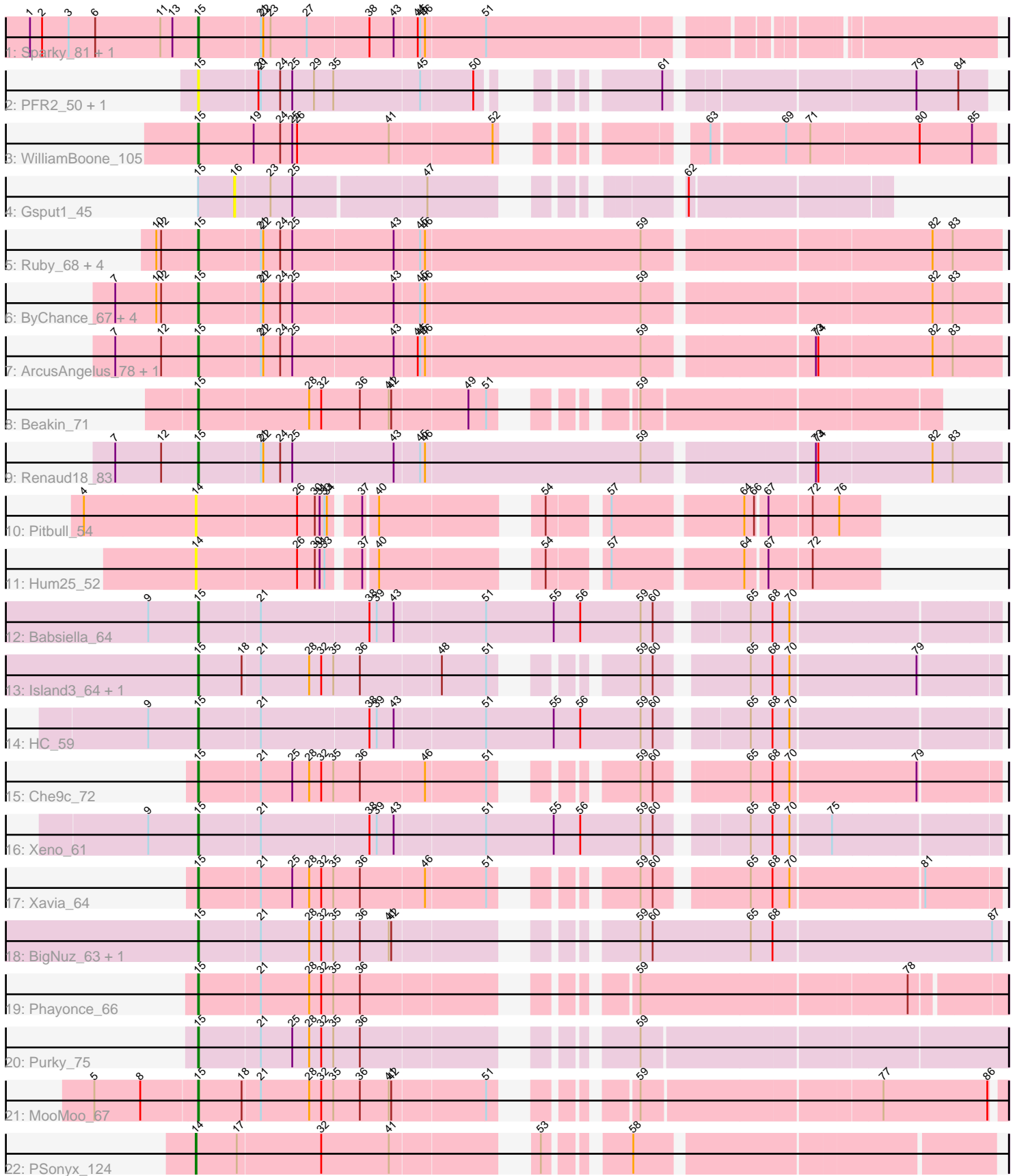


Pham 156536



Note: Tracks are now grouped by subcluster and scaled. Switching in subcluster is indicated by changes in track color. Track scale is now set by default to display the region 30 bp upstream of start 1 to 30 bp downstream of the last possible start. If this default region is judged to be packed too tightly with annotated starts, the track will be further scaled to only show that region of the ORF with annotated starts. This action will be indicated by adding "Zoomed" to the title. For starts, yellow indicates the location of called starts comprised solely of Glimmer/GeneMark auto-annotations, green indicates the location of called starts with at least 1 manual gene annotation.

Pham 156536 Report

This analysis was run 04/12/24 on database version 558.

Pham number 156536 has 35 members, 8 are drafts.

Phages represented in each track:

- Track 1 : Sparky_81, Farewell_83
- Track 2 : PFR2_50, PFR1_48
- Track 3 : WilliamBoone_105
- Track 4 : Gspu1_45
- Track 5 : Ruby_68, MisterCuddles_70, Stap_68, Krakatau_68, Girr_70
- Track 6 : ByChance_67, Mova_73, ShowerHandel_75, Alexphander_75, Madiba_77
- Track 7 : ArcusAngelus_78, Chevrolet_83
- Track 8 : Beakin_71
- Track 9 : Renaud18_83
- Track 10 : Pitbull_54
- Track 11 : Hum25_52
- Track 12 : Babsiella_64
- Track 13 : Island3_64, Brujita_63
- Track 14 : HC_59
- Track 15 : Che9c_72
- Track 16 : Xeno_61
- Track 17 : Xavia_64
- Track 18 : BigNuz_63, Nazo_64
- Track 19 : Phayonce_66
- Track 20 : Purky_75
- Track 21 : MooMoo_67
- Track 22 : PSonyx_124

Summary of Final Annotations (See graph section above for start numbers):

The start number called the most often in the published annotations is 15, it was called in 26 of the 27 non-draft genes in the pham.

Genes that call this "Most Annotated" start:

- Alexphander_75, ArcusAngelus_78, Babsiella_64, Beakin_71, BigNuz_63, Brujita_63, ByChance_67, Che9c_72, Chevrolet_83, Farewell_83, Girr_70, HC_59, Island3_64, Krakatau_68, Madiba_77, MisterCuddles_70, MooMoo_67, Mova_73, Nazo_64, PFR1_48, PFR2_50, Phayonce_66, Purky_75, Renaud18_83, Ruby_68, ShowerHandel_75, Sparky_81, Stap_68, WilliamBoone_105, Xavia_64, Xeno_61,

Genes that have the "Most Annotated" start but do not call it:

- Gspu1_45,

Genes that do not have the "Most Annotated" start:

- Hum25_52, PSonyx_124, Pitbull_54,

Summary by start number:

Start 14:

- Found in 3 of 35 (8.6%) of genes in pham
- Manual Annotations of this start: 1 of 27
- Called 100.0% of time when present
- Phage (with cluster) where this start called: Hum25_52 (FQ), PSonyx_124 (singleton), Pitbull_54 (FQ),

Start 15:

- Found in 32 of 35 (91.4%) of genes in pham
- Manual Annotations of this start: 26 of 27
- Called 96.9% of time when present
- Phage (with cluster) where this start called: Alexphander_75 (F1), ArcusAngelus_78 (F1), Babsiella_64 (I1), Beakin_71 (F1), BigNuz_63 (P4), Brujita_63 (I1), ByChance_67 (F1), Che9c_72 (I2), Chevrolet_83 (F1), Farewell_83 (AF), Girr_70 (F1), HC_59 (I1), Island3_64 (I1), Krakatau_68 (F1), Madiba_77 (F1), MisterCuddles_70 (F1), MooMoo_67 (singleton), Mova_73 (F1), Nazo_64 (P4), PFR1_48 (BX), PFR2_50 (BX), Phayonce_66 (P5), Purky_75 (P6), Renaud18_83 (F4), Ruby_68 (F1), ShowerHandel_75 (F1), Sparky_81 (AF), Stap_68 (F1), WilliamBoone_105 (CQ1), Xavia_64 (P3), Xeno_61 (N),

Start 16:

- Found in 1 of 35 (2.9%) of genes in pham
- No Manual Annotations of this start.
- Called 100.0% of time when present
- Phage (with cluster) where this start called: Gspu1_45 (CU2),

Summary by clusters:

There are 15 clusters represented in this pham: F1, singleton, I2, F4, CU2, P4, P3, I1, AF, FQ, N, P6, CQ1, BX, P5,

Info for manual annotations of cluster AF:

- Start number 15 was manually annotated 1 time for cluster AF.

Info for manual annotations of cluster CQ1:

- Start number 15 was manually annotated 1 time for cluster CQ1.

Info for manual annotations of cluster F1:

- Start number 15 was manually annotated 11 times for cluster F1.

Info for manual annotations of cluster F4:

- Start number 15 was manually annotated 1 time for cluster F4.

Info for manual annotations of cluster I1:

- Start number 15 was manually annotated 4 times for cluster I1.

Info for manual annotations of cluster I2:

- Start number 15 was manually annotated 1 time for cluster I2.

Info for manual annotations of cluster N:

- Start number 15 was manually annotated 1 time for cluster N.

Info for manual annotations of cluster P3:

- Start number 15 was manually annotated 1 time for cluster P3.

Info for manual annotations of cluster P4:

- Start number 15 was manually annotated 2 times for cluster P4.

Info for manual annotations of cluster P5:

- Start number 15 was manually annotated 1 time for cluster P5.

Info for manual annotations of cluster P6:

- Start number 15 was manually annotated 1 time for cluster P6.

Gene Information:

Gene: Alexphander_75 Start: 46658, Stop: 47605, Start Num: 15

Candidate Starts for Alexphander_75:

(7, 46559), (10, 46610), (12, 46616), (Start: 15 @46658 has 26 MA's), (21, 46733), (22, 46736), (24, 46757), (25, 46772), (43, 46895), (45, 46925), (46, 46931), (59, 47195), (82, 47522), (83, 47546),

Gene: ArcusAngelus_78 Start: 47565, Stop: 48512, Start Num: 15

Candidate Starts for ArcusAngelus_78:

(7, 47466), (12, 47523), (Start: 15 @47565 has 26 MA's), (21, 47640), (22, 47643), (24, 47664), (25, 47679), (43, 47802), (44, 47829), (45, 47832), (46, 47838), (59, 48102), (73, 48291), (74, 48294), (82, 48429), (83, 48453),

Gene: Babsiella_64 Start: 40664, Stop: 41602, Start Num: 15

Candidate Starts for Babsiella_64:

(9, 40604), (Start: 15 @40664 has 26 MA's), (21, 40739), (38, 40871), (39, 40880), (43, 40901), (51, 41009), (55, 41093), (56, 41126), (59, 41201), (60, 41216), (65, 41309), (68, 41336), (70, 41357),

Gene: Beakin_71 Start: 42319, Stop: 43122, Start Num: 15

Candidate Starts for Beakin_71:

(Start: 15 @42319 has 26 MA's), (28, 42454), (32, 42469), (36, 42517), (41, 42553), (42, 42556), (49, 42646), (51, 42667), (59, 42772),

Gene: BigNuz_63 Start: 41443, Stop: 42339, Start Num: 15

Candidate Starts for BigNuz_63:

(Start: 15 @41443 has 26 MA's), (21, 41518), (28, 41578), (32, 41593), (35, 41608), (36, 41641), (41, 41677), (42, 41680), (59, 41905), (60, 41920), (65, 42040), (68, 42067), (87, 42328),

Gene: Brujita_63 Start: 40794, Stop: 41660, Start Num: 15

Candidate Starts for Brujita_63:

(Start: 15 @40794 has 26 MA's), (18, 40848), (21, 40869), (28, 40929), (32, 40944), (35, 40959), (36, 40992), (48, 41088), (51, 41142), (59, 41256), (60, 41271), (65, 41367), (68, 41394), (70, 41415), (79, 41565),

Gene: ByChance_67 Start: 42797, Stop: 43744, Start Num: 15

Candidate Starts for ByChance_67:

(7, 42698), (10, 42749), (12, 42755), (Start: 15 @42797 has 26 MA's), (21, 42872), (22, 42875), (24, 42896), (25, 42911), (43, 43034), (45, 43064), (46, 43070), (59, 43334), (82, 43661), (83, 43685),

Gene: Che9c_72 Start: 50505, Stop: 51371, Start Num: 15

Candidate Starts for Che9c_72:

(Start: 15 @50505 has 26 MA's), (21, 50580), (25, 50619), (28, 50640), (32, 50655), (35, 50670), (36, 50703), (46, 50781), (51, 50853), (59, 50967), (60, 50982), (65, 51078), (68, 51105), (70, 51126), (79, 51276),

Gene: Chevrolet_83 Start: 47566, Stop: 48513, Start Num: 15

Candidate Starts for Chevrolet_83:

(7, 47467), (12, 47524), (Start: 15 @47566 has 26 MA's), (21, 47641), (22, 47644), (24, 47665), (25, 47680), (43, 47803), (44, 47830), (45, 47833), (46, 47839), (59, 48103), (73, 48292), (74, 48295), (82, 48430), (83, 48454),

Gene: Farewell_83 Start: 53367, Stop: 54266, Start Num: 15

Candidate Starts for Farewell_83:

(1, 53160), (2, 53175), (3, 53208), (6, 53241), (11, 53322), (13, 53337), (Start: 15 @53367 has 26 MA's), (21, 53442), (22, 53445), (23, 53454), (27, 53499), (38, 53574), (43, 53604), (44, 53631), (45, 53634), (46, 53640), (51, 53712),

Gene: Girr_70 Start: 46136, Stop: 47083, Start Num: 15

Candidate Starts for Girr_70:

(10, 46088), (12, 46094), (Start: 15 @46136 has 26 MA's), (21, 46211), (22, 46214), (24, 46235), (25, 46250), (43, 46373), (45, 46403), (46, 46409), (59, 46673), (82, 47000), (83, 47024),

Gene: Gspu1_45 Start: 32516, Stop: 33187, Start Num: 16

Candidate Starts for Gspu1_45:

(Start: 15 @32471 has 26 MA's), (16, 32516), (23, 32558), (25, 32585), (47, 32741), (62, 32957),

Gene: HC_59 Start: 38210, Stop: 39148, Start Num: 15

Candidate Starts for HC_59:

(9, 38150), (Start: 15 @38210 has 26 MA's), (21, 38285), (38, 38417), (39, 38426), (43, 38447), (51, 38555), (55, 38639), (56, 38672), (59, 38747), (60, 38762), (65, 38855), (68, 38882), (70, 38903),

Gene: Hum25_52 Start: 32602, Stop: 33336, Start Num: 14

Candidate Starts for Hum25_52:

(Start: 14 @32602 has 1 MA's), (26, 32725), (30, 32746), (31, 32752), (33, 32758), (37, 32791), (40, 32806), (54, 32968), (57, 33028), (64, 33178), (67, 33202), (72, 33253),

Gene: Island3_64 Start: 40794, Stop: 41660, Start Num: 15

Candidate Starts for Island3_64:

(Start: 15 @40794 has 26 MA's), (18, 40848), (21, 40869), (28, 40929), (32, 40944), (35, 40959), (36, 40992), (48, 41088), (51, 41142), (59, 41256), (60, 41271), (65, 41367), (68, 41394), (70, 41415), (79, 41565),

Gene: Krakatau_68 Start: 42516, Stop: 43463, Start Num: 15

Candidate Starts for Krakatau_68:

(10, 42468), (12, 42474), (Start: 15 @42516 has 26 MA's), (21, 42591), (22, 42594), (24, 42615), (25, 42630), (43, 42753), (45, 42783), (46, 42789), (59, 43053), (82, 43380), (83, 43404),

Gene: Madiba_77 Start: 47713, Stop: 48660, Start Num: 15

Candidate Starts for Madiba_77:

(7, 47614), (10, 47665), (12, 47671), (Start: 15 @47713 has 26 MA's), (21, 47788), (22, 47791), (24, 47812), (25, 47827), (43, 47950), (45, 47980), (46, 47986), (59, 48250), (82, 48577), (83, 48601),

Gene: MisterCuddles_70 Start: 46136, Stop: 47083, Start Num: 15

Candidate Starts for MisterCuddles_70:

(10, 46088), (12, 46094), (Start: 15 @46136 has 26 MA's), (21, 46211), (22, 46214), (24, 46235), (25, 46250), (43, 46373), (45, 46403), (46, 46409), (59, 46673), (82, 47000), (83, 47024),

Gene: MooMoo_67 Start: 43945, Stop: 44826, Start Num: 15

Candidate Starts for MooMoo_67:

(5, 43822), (8, 43879), (Start: 15 @43945 has 26 MA's), (18, 43999), (21, 44020), (28, 44080), (32, 44095), (35, 44110), (36, 44143), (41, 44179), (42, 44182), (51, 44293), (59, 44401), (77, 44683), (86, 44812),

Gene: Mova_73 Start: 45137, Stop: 46084, Start Num: 15

Candidate Starts for Mova_73:

(7, 45038), (10, 45089), (12, 45095), (Start: 15 @45137 has 26 MA's), (21, 45212), (22, 45215), (24, 45236), (25, 45251), (43, 45374), (45, 45404), (46, 45410), (59, 45674), (82, 46001), (83, 46025),

Gene: Nazo_64 Start: 41628, Stop: 42524, Start Num: 15

Candidate Starts for Nazo_64:

(Start: 15 @41628 has 26 MA's), (21, 41703), (28, 41763), (32, 41778), (35, 41793), (36, 41826), (41, 41862), (42, 41865), (59, 42090), (60, 42105), (65, 42225), (68, 42252), (87, 42513),

Gene: PFR1_48 Start: 33401, Stop: 34246, Start Num: 15

Candidate Starts for PFR1_48:

(Start: 15 @33401 has 26 MA's), (20, 33473), (21, 33476), (24, 33500), (25, 33515), (29, 33542), (35, 33566), (45, 33671), (50, 33734), (61, 33878), (79, 34160), (84, 34211),

Gene: PFR2_50 Start: 34970, Stop: 35815, Start Num: 15

Candidate Starts for PFR2_50:

(Start: 15 @34970 has 26 MA's), (20, 35042), (21, 35045), (24, 35069), (25, 35084), (29, 35111), (35, 35135), (45, 35240), (50, 35303), (61, 35447), (79, 35729), (84, 35780),

Gene: PSonyx_124 Start: 65104, Stop: 65970, Start Num: 14

Candidate Starts for PSonyx_124:

(Start: 14 @65104 has 1 MA's), (17, 65155), (32, 65257), (41, 65341), (53, 65479), (58, 65557),

Gene: Phayonce_66 Start: 43928, Stop: 44809, Start Num: 15

Candidate Starts for Phayonce_66:

(Start: 15 @43928 has 26 MA's), (21, 44003), (28, 44063), (32, 44078), (35, 44093), (36, 44126), (59, 44384), (78, 44702),

Gene: Pitbull_54 Start: 31198, Stop: 31932, Start Num: 14

Candidate Starts for Pitbull_54:

(4, 31060), (Start: 14 @31198 has 1 MA's), (26, 31321), (30, 31342), (31, 31348), (33, 31354), (34, 31357), (37, 31387), (40, 31402), (54, 31564), (57, 31624), (64, 31774), (66, 31786), (67, 31798), (72, 31849), (76, 31882),

Gene: Purky_75 Start: 45874, Stop: 46767, Start Num: 15

Candidate Starts for Purky_75:

(Start: 15 @45874 has 26 MA's), (21, 45949), (25, 45988), (28, 46009), (32, 46024), (35, 46039), (36, 46072), (59, 46336),

Gene: Renaud18_83 Start: 47137, Stop: 48084, Start Num: 15

Candidate Starts for Renaud18_83:

(7, 47038), (12, 47095), (Start: 15 @47137 has 26 MA's), (21, 47212), (22, 47215), (24, 47236), (25, 47251), (43, 47374), (45, 47404), (46, 47410), (59, 47674), (73, 47863), (74, 47866), (82, 48001), (83, 48025),

Gene: Ruby_68 Start: 46137, Stop: 47084, Start Num: 15

Candidate Starts for Ruby_68:

(10, 46089), (12, 46095), (Start: 15 @46137 has 26 MA's), (21, 46212), (22, 46215), (24, 46236), (25, 46251), (43, 46374), (45, 46404), (46, 46410), (59, 46674), (82, 47001), (83, 47025),

Gene: ShowerHandel_75 Start: 46737, Stop: 47684, Start Num: 15

Candidate Starts for ShowerHandel_75:

(7, 46638), (10, 46689), (12, 46695), (Start: 15 @46737 has 26 MA's), (21, 46812), (22, 46815), (24, 46836), (25, 46851), (43, 46974), (45, 47004), (46, 47010), (59, 47274), (82, 47601), (83, 47625),

Gene: Sparky_81 Start: 54961, Stop: 55860, Start Num: 15

Candidate Starts for Sparky_81:

(1, 54754), (2, 54769), (3, 54802), (6, 54835), (11, 54916), (13, 54931), (Start: 15 @54961 has 26 MA's), (21, 55036), (22, 55039), (23, 55048), (27, 55093), (38, 55168), (43, 55198), (44, 55225), (45, 55228), (46, 55234), (51, 55306),

Gene: Stap_68 Start: 43382, Stop: 44329, Start Num: 15

Candidate Starts for Stap_68:

(10, 43334), (12, 43340), (Start: 15 @43382 has 26 MA's), (21, 43457), (22, 43460), (24, 43481), (25, 43496), (43, 43619), (45, 43649), (46, 43655), (59, 43919), (82, 44246), (83, 44270),

Gene: WilliamBoone_105 Start: 60775, Stop: 61641, Start Num: 15

Candidate Starts for WilliamBoone_105:

(Start: 15 @60775 has 26 MA's), (19, 60844), (24, 60877), (25, 60892), (26, 60898), (41, 61012), (52, 61135), (63, 61300), (69, 61387), (71, 61417), (80, 61549), (85, 61612),

Gene: Xavia_64 Start: 45674, Stop: 46540, Start Num: 15

Candidate Starts for Xavia_64:

(Start: 15 @45674 has 26 MA's), (21, 45749), (25, 45788), (28, 45809), (32, 45824), (35, 45839), (36, 45872), (46, 45950), (51, 46022), (59, 46136), (60, 46151), (65, 46247), (68, 46274), (70, 46295), (81, 46451),

Gene: Xeno_61 Start: 38162, Stop: 39100, Start Num: 15

Candidate Starts for Xeno_61:

(9, 38102), (Start: 15 @38162 has 26 MA's), (21, 38237), (38, 38369), (39, 38378), (43, 38399), (51, 38507), (55, 38591), (56, 38624), (59, 38699), (60, 38714), (65, 38807), (68, 38834), (70, 38855), (75, 38903),