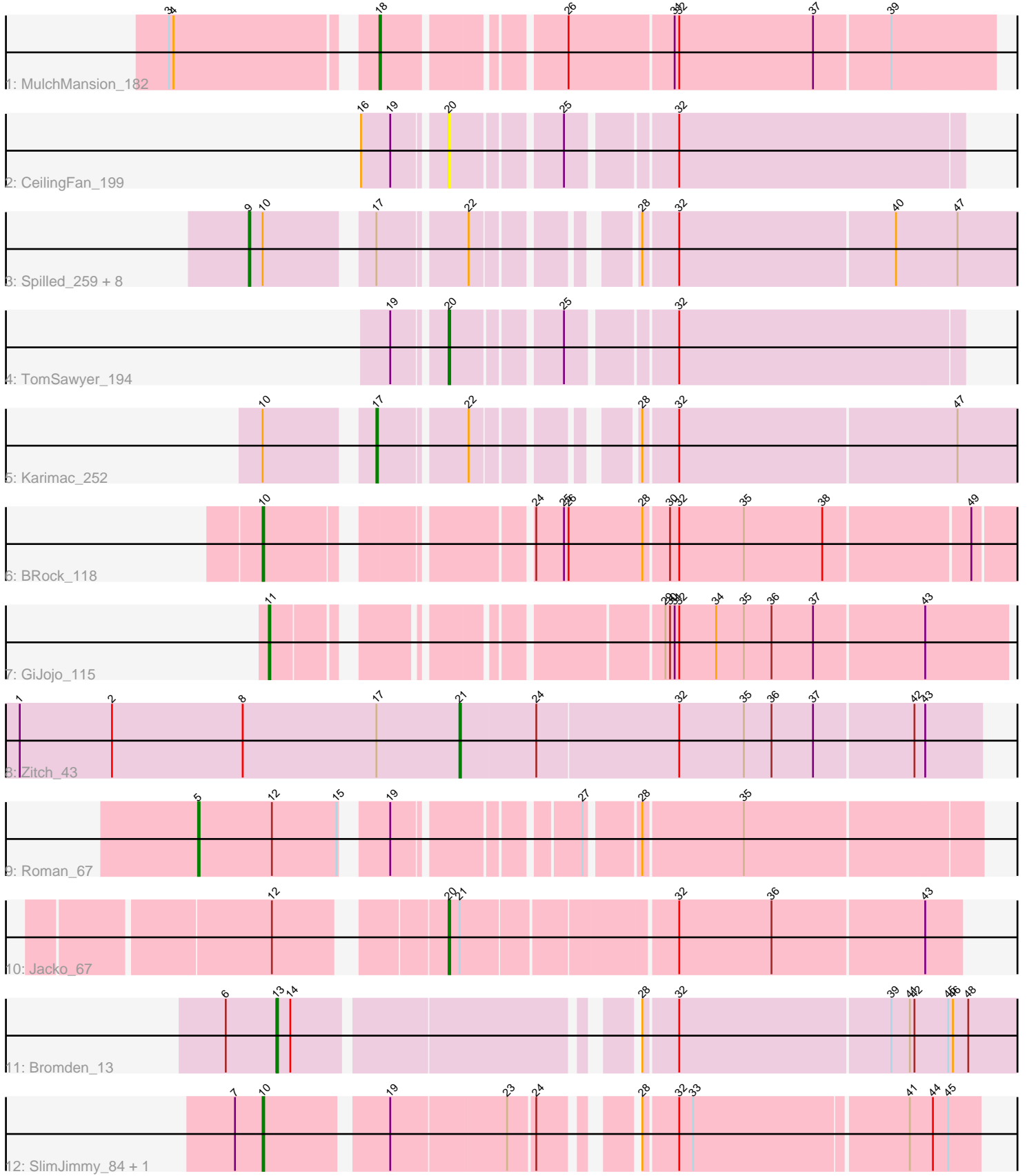


Pham 156660



Note: Tracks are now grouped by subcluster and scaled. Switching in subcluster is indicated by changes in track color. Track scale is now set by default to display the region 30 bp upstream of start 1 to 30 bp downstream of the last possible start. If this default region is judged to be packed too tightly with annotated starts, the track will be further scaled to only show that region of the ORF with annotated starts. This action will be indicated by adding "Zoomed" to the title. For starts, yellow indicates the location of called starts comprised solely of Glimmer/GeneMark auto-annotations, green indicates the location of called starts with at least 1 manual gene annotation.

Pham 156660 Report

This analysis was run 04/12/24 on database version 558.

Pham number 156660 has 21 members, 4 are drafts.

Phages represented in each track:

- Track 1 : MulchMansion_182
- Track 2 : CeilingFan_199
- Track 3 : Spilled_259, KentuckyRacer_263, TomSawyer_256, Quaran19_252, Enygma_258, JimJam_259, CeilingFan_264, Gibbi_260, Wipeout_242
- Track 4 : TomSawyer_194
- Track 5 : Karimac_252
- Track 6 : BRock_118
- Track 7 : GiJojo_115
- Track 8 : Zitch_43
- Track 9 : Roman_67
- Track 10 : Jacko_67
- Track 11 : Bromden_13
- Track 12 : SlimJimmy_84, Glaske16_86

Summary of Final Annotations (See graph section above for start numbers):

The start number called the most often in the published annotations is 9, it was called in 6 of the 17 non-draft genes in the pham.

Genes that call this "Most Annotated" start:

- CeilingFan_264, Enygma_258, Gibbi_260, JimJam_259, KentuckyRacer_263, Quaran19_252, Spilled_259, TomSawyer_256, Wipeout_242,

Genes that have the "Most Annotated" start but do not call it:

-

Genes that do not have the "Most Annotated" start:

- BRock_118, Bromden_13, CeilingFan_199, GiJojo_115, Glaske16_86, Jacko_67, Karimac_252, MulchMansion_182, Roman_67, SlimJimmy_84, TomSawyer_194, Zitch_43,

Summary by start number:

Start 5:

- Found in 1 of 21 (4.8%) of genes in pham
- Manual Annotations of this start: 1 of 17
- Called 100.0% of time when present
- Phage (with cluster) where this start called: Roman_67 (ED1),

Start 9:

- Found in 9 of 21 (42.9%) of genes in pham
- Manual Annotations of this start: 6 of 17
- Called 100.0% of time when present
- Phage (with cluster) where this start called: CeilingFan_264 (BE2), Enygma_258 (BE2), Gibbi_260 (BE2), JimJam_259 (BE2), KentuckyRacer_263 (BE2), Quaran19_252 (BE2), Spilled_259 (BE2), TomSawyer_256 (BE2), Wipeout_242 (BE2),

Start 10:

- Found in 13 of 21 (61.9%) of genes in pham
- Manual Annotations of this start: 3 of 17
- Called 23.1% of time when present
- Phage (with cluster) where this start called: BRock_118 (BS), Glaske16_86 (M1), SlimJimmy_84 (M1),

Start 11:

- Found in 1 of 21 (4.8%) of genes in pham
- Manual Annotations of this start: 1 of 17
- Called 100.0% of time when present
- Phage (with cluster) where this start called: GiJojo_115 (BS),

Start 13:

- Found in 1 of 21 (4.8%) of genes in pham
- Manual Annotations of this start: 1 of 17
- Called 100.0% of time when present
- Phage (with cluster) where this start called: Bromden_13 (L4),

Start 17:

- Found in 11 of 21 (52.4%) of genes in pham
- Manual Annotations of this start: 1 of 17
- Called 9.1% of time when present
- Phage (with cluster) where this start called: Karimac_252 (BE2),

Start 18:

- Found in 1 of 21 (4.8%) of genes in pham
- Manual Annotations of this start: 1 of 17
- Called 100.0% of time when present
- Phage (with cluster) where this start called: MulchMansion_182 (BE1),

Start 20:

- Found in 3 of 21 (14.3%) of genes in pham
- Manual Annotations of this start: 2 of 17
- Called 100.0% of time when present
- Phage (with cluster) where this start called: CeilingFan_199 (BE2), Jacko_67 (ED1), TomSawyer_194 (BE2),

Start 21:

- Found in 2 of 21 (9.5%) of genes in pham
- Manual Annotations of this start: 1 of 17
- Called 50.0% of time when present
- Phage (with cluster) where this start called: Zitch_43 (DE4),

Summary by clusters:

There are 7 clusters represented in this pham: DE4, L4, ED1, M1, BS, BE2, BE1,

Info for manual annotations of cluster BE1:

- Start number 18 was manually annotated 1 time for cluster BE1.

Info for manual annotations of cluster BE2:

- Start number 9 was manually annotated 6 times for cluster BE2.
- Start number 17 was manually annotated 1 time for cluster BE2.
- Start number 20 was manually annotated 1 time for cluster BE2.

Info for manual annotations of cluster BS:

- Start number 10 was manually annotated 1 time for cluster BS.
- Start number 11 was manually annotated 1 time for cluster BS.

Info for manual annotations of cluster DE4:

- Start number 21 was manually annotated 1 time for cluster DE4.

Info for manual annotations of cluster ED1:

- Start number 5 was manually annotated 1 time for cluster ED1.
- Start number 20 was manually annotated 1 time for cluster ED1.

Info for manual annotations of cluster L4:

- Start number 13 was manually annotated 1 time for cluster L4.

Info for manual annotations of cluster M1:

- Start number 10 was manually annotated 2 times for cluster M1.

Gene Information:

Gene: BRock_118 Start: 64876, Stop: 65322, Start Num: 10

Candidate Starts for BRock_118:

(Start: 10 @64876 has 3 MA's), (24, 65020), (25, 65038), (26, 65041), (28, 65089), (30, 65104), (32, 65110), (35, 65152), (38, 65203), (49, 65293),

Gene: Bromden_13 Start: 8696, Stop: 9157, Start Num: 13

Candidate Starts for Bromden_13:

(6, 8663), (Start: 13 @8696 has 1 MA's), (14, 8705), (28, 8900), (32, 8921), (39, 9056), (41, 9068), (42, 9071), (45, 9092), (46, 9095), (48, 9104),

Gene: CeilingFan_199 Start: 96969, Stop: 97277, Start Num: 20

Candidate Starts for CeilingFan_199:

(16, 96921), (19, 96939), (Start: 20 @96969 has 2 MA's), (25, 97032), (32, 97095),

Gene: CeilingFan_264 Start: 116457, Stop: 116897, Start Num: 9

Candidate Starts for CeilingFan_264:

(Start: 9 @116457 has 6 MA's), (Start: 10 @116466 has 3 MA's), (Start: 17 @116526 has 1 MA's), (22, 116577), (28, 116658), (32, 116679), (40, 116817), (47, 116856),

Gene: Enygma_258 Start: 118257, Stop: 118697, Start Num: 9

Candidate Starts for Enygma_258:

(Start: 9 @118257 has 6 MA's), (Start: 10 @118266 has 3 MA's), (Start: 17 @118326 has 1 MA's), (22, 118377), (28, 118458), (32, 118479), (40, 118617), (47, 118656),

Gene: GiJojo_115 Start: 67939, Stop: 68364, Start Num: 11

Candidate Starts for GiJojo_115:

(Start: 11 @67939 has 1 MA's), (29, 68146), (30, 68149), (31, 68152), (32, 68155), (34, 68179), (35, 68197), (36, 68215), (37, 68242), (43, 68311),

Gene: Gibbi_260 Start: 115950, Stop: 116390, Start Num: 9

Candidate Starts for Gibbi_260:

(Start: 9 @115950 has 6 MA's), (Start: 10 @115959 has 3 MA's), (Start: 17 @116019 has 1 MA's), (22, 116070), (28, 116151), (32, 116172), (40, 116310), (47, 116349),

Gene: Glaske16_86 Start: 52934, Stop: 53347, Start Num: 10

Candidate Starts for Glaske16_86:

(7, 52916), (Start: 10 @52934 has 3 MA's), (19, 53006), (23, 53078), (24, 53093), (28, 53138), (32, 53159), (33, 53168), (41, 53303), (44, 53318), (45, 53327),

Gene: Jacko_67 Start: 40024, Stop: 39710, Start Num: 20

Candidate Starts for Jacko_67:

(12, 40117), (Start: 20 @40024 has 2 MA's), (Start: 21 @40018 has 1 MA's), (32, 39889), (36, 39829), (43, 39733),

Gene: JimJam_259 Start: 117386, Stop: 117826, Start Num: 9

Candidate Starts for JimJam_259:

(Start: 9 @117386 has 6 MA's), (Start: 10 @117395 has 3 MA's), (Start: 17 @117455 has 1 MA's), (22, 117506), (28, 117587), (32, 117608), (40, 117746), (47, 117785),

Gene: Karimac_252 Start: 115850, Stop: 116224, Start Num: 17

Candidate Starts for Karimac_252:

(Start: 10 @115790 has 3 MA's), (Start: 17 @115850 has 1 MA's), (22, 115901), (28, 115982), (32, 116003), (47, 116180),

Gene: KentuckyRacer_263 Start: 117301, Stop: 117741, Start Num: 9

Candidate Starts for KentuckyRacer_263:

(Start: 9 @117301 has 6 MA's), (Start: 10 @117310 has 3 MA's), (Start: 17 @117370 has 1 MA's), (22, 117421), (28, 117502), (32, 117523), (40, 117661), (47, 117700),

Gene: MulchMansion_182 Start: 97115, Stop: 96744, Start Num: 18

Candidate Starts for MulchMansion_182:

(3, 97235), (4, 97232), (Start: 18 @97115 has 1 MA's), (26, 97013), (31, 96947), (32, 96944), (37, 96857), (39, 96809),

Gene: Quaran19_252 Start: 115643, Stop: 116083, Start Num: 9

Candidate Starts for Quaran19_252:

(Start: 9 @115643 has 6 MA's), (Start: 10 @115652 has 3 MA's), (Start: 17 @115712 has 1 MA's), (22, 115763), (28, 115844), (32, 115865), (40, 116003), (47, 116042),

Gene: Roman_67 Start: 39014, Stop: 38559, Start Num: 5

Candidate Starts for Roman_67:

(Start: 5 @39014 has 1 MA's), (12, 38966), (15, 38924), (19, 38903), (27, 38801), (28, 38771), (35, 38708),

Gene: SlimJimmy_84 Start: 53211, Stop: 53624, Start Num: 10

Candidate Starts for SlimJimmy_84:

(7, 53193), (Start: 10 @53211 has 3 MA's), (19, 53283), (23, 53355), (24, 53370), (28, 53415), (32, 53436), (33, 53445), (41, 53580), (44, 53595), (45, 53604),

Gene: Spilled_259 Start: 116318, Stop: 116758, Start Num: 9

Candidate Starts for Spilled_259:

(Start: 9 @116318 has 6 MA's), (Start: 10 @116327 has 3 MA's), (Start: 17 @116387 has 1 MA's), (22, 116438), (28, 116519), (32, 116540), (40, 116678), (47, 116717),

Gene: TomSawyer_256 Start: 117629, Stop: 118069, Start Num: 9

Candidate Starts for TomSawyer_256:

(Start: 9 @117629 has 6 MA's), (Start: 10 @117638 has 3 MA's), (Start: 17 @117698 has 1 MA's), (22, 117749), (28, 117830), (32, 117851), (40, 117989), (47, 118028),

Gene: TomSawyer_194 Start: 98310, Stop: 98618, Start Num: 20

Candidate Starts for TomSawyer_194:

(19, 98280), (Start: 20 @98310 has 2 MA's), (25, 98373), (32, 98436),

Gene: Wipeout_242 Start: 116581, Stop: 117021, Start Num: 9

Candidate Starts for Wipeout_242:

(Start: 9 @116581 has 6 MA's), (Start: 10 @116590 has 3 MA's), (Start: 17 @116650 has 1 MA's), (22, 116701), (28, 116782), (32, 116803), (40, 116941), (47, 116980),

Gene: Zitch_43 Start: 35193, Stop: 35522, Start Num: 21

Candidate Starts for Zitch_43:

(1, 34908), (2, 34968), (8, 35052), (Start: 17 @35139 has 1 MA's), (Start: 21 @35193 has 1 MA's), (24, 35241), (32, 35331), (35, 35373), (36, 35391), (37, 35418), (42, 35481), (43, 35487),