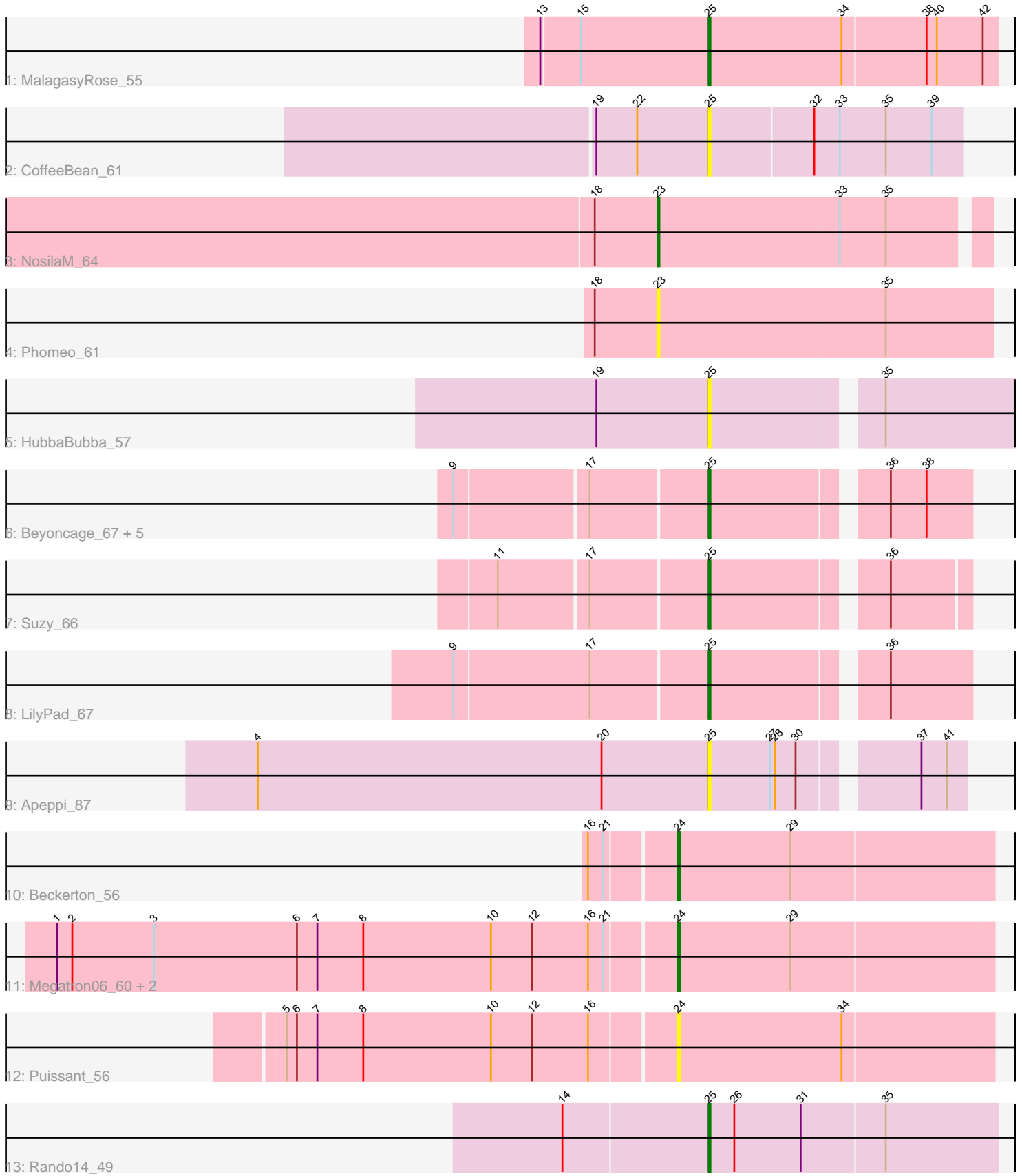


# Pham 156686



Note: Tracks are now grouped by subcluster and scaled. Switching in subcluster is indicated by changes in track color. Track scale is now set by default to display the region 30 bp upstream of start 1 to 30 bp downstream of the last possible start. If this default region is judged to be packed too tightly with annotated starts, the track will be further scaled to only show that region of the ORF with annotated starts. This action will be indicated by adding "Zoomed" to the title. For starts, yellow indicates the location of called starts comprised solely of Glimmer/GeneMark auto-annotations, green indicates the location of called starts with at least 1 manual gene annotation.

## Pham 156686 Report

This analysis was run 04/12/24 on database version 558.

Pham number 156686 has 20 members, 6 are drafts.

Phages represented in each track:

- Track 1 : MalagasyRose\_55
- Track 2 : CoffeeBean\_61
- Track 3 : NosilaM\_64
- Track 4 : Phomeo\_61
- Track 5 : HubbaBubba\_57
- Track 6 : Beyoncage\_67, Terapin\_68, Sienna\_67, Madi\_66, Djokovic\_67, BiteSize\_67
- Track 7 : Suzy\_66
- Track 8 : LilyPad\_67
- Track 9 : Apeppi\_87
- Track 10 : Beckerton\_56
- Track 11 : Megatron06\_60, Phreeze\_55, Damien\_57
- Track 12 : Puissant\_56
- Track 13 : Rando14\_49

### ***Summary of Final Annotations (See graph section above for start numbers):***

The start number called the most often in the published annotations is 25, it was called in 10 of the 14 non-draft genes in the pham.

Genes that call this "Most Annotated" start:

- Apeppi\_87, Beyoncage\_67, BiteSize\_67, CoffeeBean\_61, Djokovic\_67, HubbaBubba\_57, LilyPad\_67, Madi\_66, MalagasyRose\_55, Rando14\_49, Sienna\_67, Suzy\_66, Terapin\_68,

Genes that have the "Most Annotated" start but do not call it:

- 

Genes that do not have the "Most Annotated" start:

- Beckerton\_56, Damien\_57, Megatron06\_60, NosilaM\_64, Phomeo\_61, Phreeze\_55, Puissant\_56,

### **Summary by start number:**

Start 23:

- Found in 2 of 20 ( 10.0% ) of genes in pham
- Manual Annotations of this start: 1 of 14
- Called 100.0% of time when present
- Phage (with cluster) where this start called: NosilaM\_64 (CR2), Phomeo\_61 (CR2),

Start 24:

- Found in 5 of 20 ( 25.0% ) of genes in pham
- Manual Annotations of this start: 3 of 14
- Called 100.0% of time when present
- Phage (with cluster) where this start called: Beckerton\_56 (H1), Damien\_57 (H1), Megatron06\_60 (H1), Phreeze\_55 (H1), Puissant\_56 (H1),

Start 25:

- Found in 13 of 20 ( 65.0% ) of genes in pham
- Manual Annotations of this start: 10 of 14
- Called 100.0% of time when present
- Phage (with cluster) where this start called: Apeppi\_87 (DV), Beyoncage\_67 (DG1), BiteSize\_67 (DG1), CoffeeBean\_61 (CR), Djokovic\_67 (DG1), HubbaBubba\_57 (CR4), LilyPad\_67 (DG1), Madi\_66 (DG1), MalagasyRose\_55 (AG), Rando14\_49 (K5), Sienna\_67 (DG1), Suzy\_66 (DG1), Terapin\_68 (DG1),

**Summary by clusters:**

There are 8 clusters represented in this pham: CR2, CR4, AG, H1, DG1, K5, DV, CR,

Info for manual annotations of cluster AG:

- Start number 25 was manually annotated 1 time for cluster AG.

Info for manual annotations of cluster CR2:

- Start number 23 was manually annotated 1 time for cluster CR2.

Info for manual annotations of cluster DG1:

- Start number 25 was manually annotated 8 times for cluster DG1.

Info for manual annotations of cluster H1:

- Start number 24 was manually annotated 3 times for cluster H1.

Info for manual annotations of cluster K5:

- Start number 25 was manually annotated 1 time for cluster K5.

**Gene Information:**

Gene: Apeppi\_87 Start: 63900, Stop: 64037, Start Num: 25

Candidate Starts for Apeppi\_87:

(4, 63636), (20, 63837), (Start: 25 @63900 has 10 MA's), (27, 63936), (28, 63939), (30, 63951), (37, 64011), (41, 64026),

Gene: Beckerton\_56 Start: 44938, Stop: 45120, Start Num: 24  
Candidate Starts for Beckerton\_56:  
(16, 44890), (21, 44899), (Start: 24 @44938 has 3 MA's), (29, 45004),

Gene: Beyoncage\_67 Start: 50195, Stop: 50335, Start Num: 25  
Candidate Starts for Beyoncage\_67:  
(9, 50054), (17, 50129), (Start: 25 @50195 has 10 MA's), (36, 50288), (38, 50309),

Gene: BiteSize\_67 Start: 50281, Stop: 50421, Start Num: 25  
Candidate Starts for BiteSize\_67:  
(9, 50140), (17, 50215), (Start: 25 @50281 has 10 MA's), (36, 50374), (38, 50395),

Gene: CoffeeBean\_61 Start: 45879, Stop: 45733, Start Num: 25  
Candidate Starts for CoffeeBean\_61:  
(19, 45945), (22, 45921), (Start: 25 @45879 has 10 MA's), (32, 45819), (33, 45804), (35, 45777), (39, 45750),

Gene: Damien\_57 Start: 44418, Stop: 44600, Start Num: 24  
Candidate Starts for Damien\_57:  
(1, 44058), (2, 44067), (3, 44115), (6, 44199), (7, 44211), (8, 44238), (10, 44313), (12, 44337), (16, 44370), (21, 44379), (Start: 24 @44418 has 3 MA's), (29, 44484),

Gene: Djokovic\_67 Start: 50194, Stop: 50334, Start Num: 25  
Candidate Starts for Djokovic\_67:  
(9, 50053), (17, 50128), (Start: 25 @50194 has 10 MA's), (36, 50287), (38, 50308),

Gene: HubbaBubba\_57 Start: 44521, Stop: 44357, Start Num: 25  
Candidate Starts for HubbaBubba\_57:  
(19, 44587), (Start: 25 @44521 has 10 MA's), (35, 44431),

Gene: LilyPad\_67 Start: 50812, Stop: 50952, Start Num: 25  
Candidate Starts for LilyPad\_67:  
(9, 50668), (17, 50746), (Start: 25 @50812 has 10 MA's), (36, 50905),

Gene: Madi\_66 Start: 50031, Stop: 50171, Start Num: 25  
Candidate Starts for Madi\_66:  
(9, 49890), (17, 49965), (Start: 25 @50031 has 10 MA's), (36, 50124), (38, 50145),

Gene: MalagasyRose\_55 Start: 38193, Stop: 38360, Start Num: 25  
Candidate Starts for MalagasyRose\_55:  
(13, 38097), (15, 38118), (Start: 25 @38193 has 10 MA's), (34, 38271), (38, 38319), (40, 38325), (42, 38352),

Gene: Megatron06\_60 Start: 44995, Stop: 45177, Start Num: 24  
Candidate Starts for Megatron06\_60:  
(1, 44635), (2, 44644), (3, 44692), (6, 44776), (7, 44788), (8, 44815), (10, 44890), (12, 44914), (16, 44947), (21, 44956), (Start: 24 @44995 has 3 MA's), (29, 45061),

Gene: NosilaM\_64 Start: 49246, Stop: 49061, Start Num: 23  
Candidate Starts for NosilaM\_64:  
(18, 49282), (Start: 23 @49246 has 1 MA's), (33, 49141), (35, 49114),

Gene: Phomeo\_61 Start: 49340, Stop: 49146, Start Num: 23

Candidate Starts for Phomeo\_61:  
(18, 49376), (Start: 23 @49340 has 1 MA's), (35, 49208),

Gene: Phreeze\_55 Start: 44015, Stop: 44197, Start Num: 24  
Candidate Starts for Phreeze\_55:  
(1, 43655), (2, 43664), (3, 43712), (6, 43796), (7, 43808), (8, 43835), (10, 43910), (12, 43934), (16, 43967), (21, 43976), (Start: 24 @44015 has 3 MA's), (29, 44081),

Gene: Puissant\_56 Start: 44115, Stop: 44297, Start Num: 24  
Candidate Starts for Puissant\_56:  
(5, 43890), (6, 43896), (7, 43908), (8, 43935), (10, 44010), (12, 44034), (16, 44067), (Start: 24 @44115 has 3 MA's), (34, 44211),

Gene: Rando14\_49 Start: 35934, Stop: 36101, Start Num: 25  
Candidate Starts for Rando14\_49:  
(14, 35850), (Start: 25 @35934 has 10 MA's), (26, 35949), (31, 35988), (35, 36036),

Gene: Sienna\_67 Start: 50272, Stop: 50412, Start Num: 25  
Candidate Starts for Sienna\_67:  
(9, 50131), (17, 50206), (Start: 25 @50272 has 10 MA's), (36, 50365), (38, 50386),

Gene: Suzy\_66 Start: 51225, Stop: 51362, Start Num: 25  
Candidate Starts for Suzy\_66:  
(11, 51108), (17, 51159), (Start: 25 @51225 has 10 MA's), (36, 51318),

Gene: Terapin\_68 Start: 50196, Stop: 50336, Start Num: 25  
Candidate Starts for Terapin\_68:  
(9, 50055), (17, 50130), (Start: 25 @50196 has 10 MA's), (36, 50289), (38, 50310),