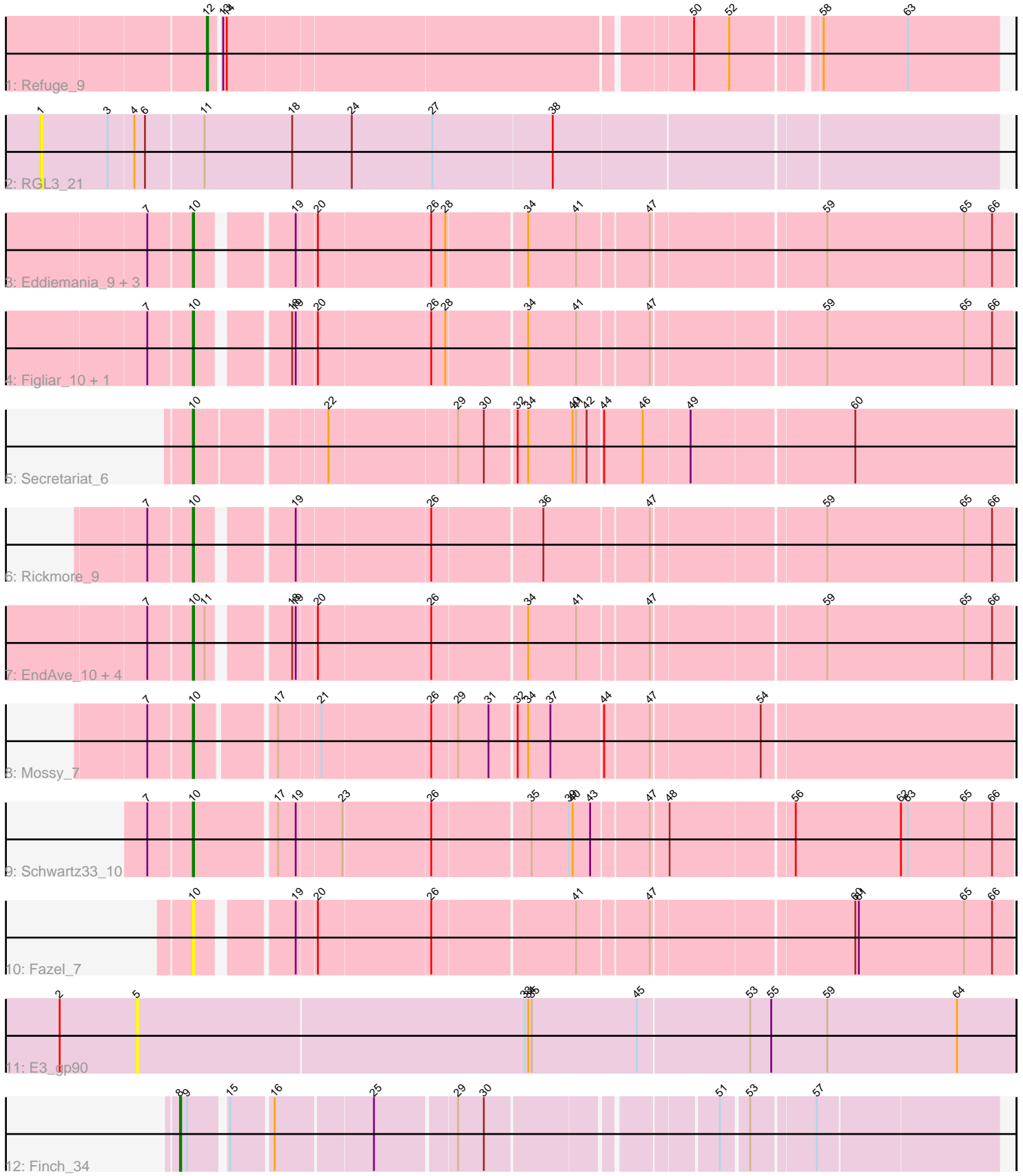


Pham 156688



Note: Tracks are now grouped by subcluster and scaled. Switching in subcluster is indicated by changes in track color. Track scale is now set by default to display the region 30 bp upstream of start 1 to 30 bp downstream of the last possible start. If this default region is judged to be packed too tightly with annotated starts, the track will be further scaled to only show that region of the ORF with annotated starts. This action will be indicated by adding "Zoomed" to the title. For starts, yellow indicates the location of called starts comprised solely of Glimmer/GeneMark auto-annotations, green indicates the location of called starts with at least 1 manual gene annotation.

## Pham 156688 Report

This analysis was run 04/12/24 on database version 558.

Pham number 156688 has 20 members, 5 are drafts.

Phages represented in each track:

- Track 1 : Refuge\_9
- Track 2 : RGL3\_21
- Track 3 : Eddiemania\_9, OlgasClover\_10, Jodelie19\_10, TenaciousP\_11
- Track 4 : Figliar\_10, Aflac\_10
- Track 5 : Secretariat\_6
- Track 6 : Rickmore\_9
- Track 7 : EndAve\_10, Nithya\_10, Chikenjars\_10, Duffington\_10, AlainaMarie\_10
- Track 8 : Mossy\_7
- Track 9 : Schwartz33\_10
- Track 10 : Fazel\_7
- Track 11 : E3\_gp90
- Track 12 : Finch\_34

### ***Summary of Final Annotations (See graph section above for start numbers):***

The start number called the most often in the published annotations is 10, it was called in 13 of the 15 non-draft genes in the pham.

Genes that call this "Most Annotated" start:

- Aflac\_10, AlainaMarie\_10, Chikenjars\_10, Duffington\_10, Eddiemania\_9, EndAve\_10, Fazel\_7, Figliar\_10, Jodelie19\_10, Mossy\_7, Nithya\_10, OlgasClover\_10, Rickmore\_9, Schwartz33\_10, Secretariat\_6, TenaciousP\_11,

Genes that have the "Most Annotated" start but do not call it:

- 

Genes that do not have the "Most Annotated" start:

- E3\_gp90, Finch\_34, RGL3\_21, Refuge\_9,

### **Summary by start number:**

Start 1:

- Found in 1 of 20 ( 5.0% ) of genes in pham
- No Manual Annotations of this start.

- Called 100.0% of time when present
- Phage (with cluster) where this start called: RGL3\_21 (CA),

Start 5:

- Found in 1 of 20 ( 5.0% ) of genes in pham
- No Manual Annotations of this start.
- Called 100.0% of time when present
- Phage (with cluster) where this start called: E3\_gp90 (singleton),

Start 8:

- Found in 1 of 20 ( 5.0% ) of genes in pham
- Manual Annotations of this start: 1 of 15
- Called 100.0% of time when present
- Phage (with cluster) where this start called: Finch\_34 (singleton),

Start 10:

- Found in 16 of 20 ( 80.0% ) of genes in pham
- Manual Annotations of this start: 13 of 15
- Called 100.0% of time when present
- Phage (with cluster) where this start called: Aflac\_10 (DJ), AlainaMarie\_10 (DJ), Chikenjars\_10 (DJ), Duffington\_10 (DJ), Eddiemania\_9 (DJ), EndAve\_10 (DJ), Fazel\_7 (DJ), Figliar\_10 (DJ), Jodelie19\_10 (DJ), Mossy\_7 (DJ), Nithya\_10 (DJ), OlgasClover\_10 (DJ), Rickmore\_9 (DJ), Schwartz33\_10 (DJ), Secretariat\_6 (DJ), TenaciousP\_11 (DJ),

Start 12:

- Found in 1 of 20 ( 5.0% ) of genes in pham
- Manual Annotations of this start: 1 of 15
- Called 100.0% of time when present
- Phage (with cluster) where this start called: Refuge\_9 (A12),

### **Summary by clusters:**

There are 4 clusters represented in this pham: CA, DJ, singleton, A12,

Info for manual annotations of cluster A12:

- Start number 12 was manually annotated 1 time for cluster A12.

Info for manual annotations of cluster DJ:

- Start number 10 was manually annotated 13 times for cluster DJ.

### **Gene Information:**

Gene: Aflac\_10 Start: 5221, Stop: 5865, Start Num: 10

Candidate Starts for Aflac\_10:

(7, 5185), (Start: 10 @5221 has 13 MA's), (18, 5287), (19, 5290), (20, 5305), (26, 5398), (28, 5410), (34, 5473), (41, 5512), (47, 5569), (59, 5707), (65, 5824), (66, 5848),

Gene: AlainaMarie\_10 Start: 5212, Stop: 5856, Start Num: 10

Candidate Starts for AlainaMarie\_10:

(7, 5176), (Start: 10 @5212 has 13 MA's), (11, 5221), (18, 5278), (19, 5281), (20, 5296), (26, 5389), (34, 5464), (41, 5503), (47, 5560), (59, 5698), (65, 5815), (66, 5839),

Gene: Chikenjars\_10 Start: 5212, Stop: 5856, Start Num: 10

Candidate Starts for Chikenjars\_10:

(7, 5176), (Start: 10 @5212 has 13 MA's), (11, 5221), (18, 5278), (19, 5281), (20, 5296), (26, 5389), (34, 5464), (41, 5503), (47, 5560), (59, 5698), (65, 5815), (66, 5839),

Gene: Duffington\_10 Start: 5197, Stop: 5841, Start Num: 10

Candidate Starts for Duffington\_10:

(7, 5161), (Start: 10 @5197 has 13 MA's), (11, 5206), (18, 5263), (19, 5266), (20, 5281), (26, 5374), (34, 5449), (41, 5488), (47, 5545), (59, 5683), (65, 5800), (66, 5824),

Gene: E3\_gp90 Start: 51623, Stop: 52363, Start Num: 5

Candidate Starts for E3\_gp90:

(2, 51557), (5, 51623), (33, 51950), (34, 51953), (35, 51956), (45, 52043), (53, 52136), (55, 52154), (59, 52202), (64, 52313),

Gene: Eddiemania\_9 Start: 4403, Stop: 5047, Start Num: 10

Candidate Starts for Eddiemania\_9:

(7, 4367), (Start: 10 @4403 has 13 MA's), (19, 4472), (20, 4487), (26, 4580), (28, 4592), (34, 4655), (41, 4694), (47, 4751), (59, 4889), (65, 5006), (66, 5030),

Gene: EndAve\_10 Start: 5212, Stop: 5856, Start Num: 10

Candidate Starts for EndAve\_10:

(7, 5176), (Start: 10 @5212 has 13 MA's), (11, 5221), (18, 5278), (19, 5281), (20, 5296), (26, 5389), (34, 5464), (41, 5503), (47, 5560), (59, 5698), (65, 5815), (66, 5839),

Gene: Fazel\_7 Start: 3942, Stop: 4586, Start Num: 10

Candidate Starts for Fazel\_7:

(Start: 10 @3942 has 13 MA's), (19, 4011), (20, 4026), (26, 4119), (41, 4233), (47, 4290), (60, 4452), (61, 4455), (65, 4545), (66, 4569),

Gene: Figliar\_10 Start: 5221, Stop: 5865, Start Num: 10

Candidate Starts for Figliar\_10:

(7, 5185), (Start: 10 @5221 has 13 MA's), (18, 5287), (19, 5290), (20, 5305), (26, 5398), (28, 5410), (34, 5473), (41, 5512), (47, 5569), (59, 5707), (65, 5824), (66, 5848),

Gene: Finch\_34 Start: 28684, Stop: 29307, Start Num: 8

Candidate Starts for Finch\_34:

(Start: 8 @28684 has 1 MA's), (9, 28690), (15, 28717), (16, 28750), (25, 28828), (29, 28891), (30, 28912), (51, 29086), (53, 29107), (57, 29158),

Gene: Jodelie19\_10 Start: 5215, Stop: 5859, Start Num: 10

Candidate Starts for Jodelie19\_10:

(7, 5179), (Start: 10 @5215 has 13 MA's), (19, 5284), (20, 5299), (26, 5392), (28, 5404), (34, 5467), (41, 5506), (47, 5563), (59, 5701), (65, 5818), (66, 5842),

Gene: Mossy\_7 Start: 3064, Stop: 3714, Start Num: 10

Candidate Starts for Mossy\_7:

(7, 3028), (Start: 10 @3064 has 13 MA's), (17, 3124), (21, 3157), (26, 3247), (29, 3268), (31, 3292), (32, 3313), (34, 3322), (37, 3340), (44, 3382), (47, 3418), (54, 3505),

Gene: Nithya\_10 Start: 5212, Stop: 5856, Start Num: 10

Candidate Starts for Nithya\_10:

(7, 5176), (Start: 10 @5212 has 13 MA's), (11, 5221), (18, 5278), (19, 5281), (20, 5296), (26, 5389), (34, 5464), (41, 5503), (47, 5560), (59, 5698), (65, 5815), (66, 5839),

Gene: OlgasClover\_10 Start: 5212, Stop: 5856, Start Num: 10

Candidate Starts for OlgasClover\_10:

(7, 5176), (Start: 10 @5212 has 13 MA's), (19, 5281), (20, 5296), (26, 5389), (28, 5401), (34, 5464), (41, 5503), (47, 5560), (59, 5698), (65, 5815), (66, 5839),

Gene: RGL3\_21 Start: 18648, Stop: 19442, Start Num: 1

Candidate Starts for RGL3\_21:

(1, 18648), (3, 18705), (4, 18726), (6, 18735), (11, 18783), (18, 18858), (24, 18909), (27, 18978), (38, 19077),

Gene: Refuge\_9 Start: 5854, Stop: 6480, Start Num: 12

Candidate Starts for Refuge\_9:

(Start: 12 @5854 has 1 MA's), (13, 5863), (14, 5866), (50, 6235), (52, 6265), (58, 6331), (63, 6403),

Gene: Rickmore\_9 Start: 3777, Stop: 4421, Start Num: 10

Candidate Starts for Rickmore\_9:

(7, 3741), (Start: 10 @3777 has 13 MA's), (19, 3846), (26, 3954), (36, 4041), (47, 4125), (59, 4263), (65, 4380), (66, 4404),

Gene: Schwartz33\_10 Start: 5228, Stop: 5884, Start Num: 10

Candidate Starts for Schwartz33\_10:

(7, 5195), (Start: 10 @5228 has 13 MA's), (17, 5294), (19, 5309), (23, 5345), (26, 5417), (35, 5495), (39, 5525), (40, 5528), (43, 5543), (47, 5588), (48, 5600), (56, 5699), (62, 5789), (63, 5795), (65, 5843), (66, 5867),

Gene: Secretariat\_6 Start: 2831, Stop: 3490, Start Num: 10

Candidate Starts for Secretariat\_6:

(Start: 10 @2831 has 13 MA's), (22, 2933), (29, 3038), (30, 3059), (32, 3083), (34, 3092), (40, 3128), (41, 3131), (42, 3140), (44, 3152), (46, 3185), (49, 3224), (60, 3356),

Gene: TenaciousP\_11 Start: 5215, Stop: 5859, Start Num: 10

Candidate Starts for TenaciousP\_11:

(7, 5179), (Start: 10 @5215 has 13 MA's), (19, 5284), (20, 5299), (26, 5392), (28, 5404), (34, 5467), (41, 5506), (47, 5563), (59, 5701), (65, 5818), (66, 5842),