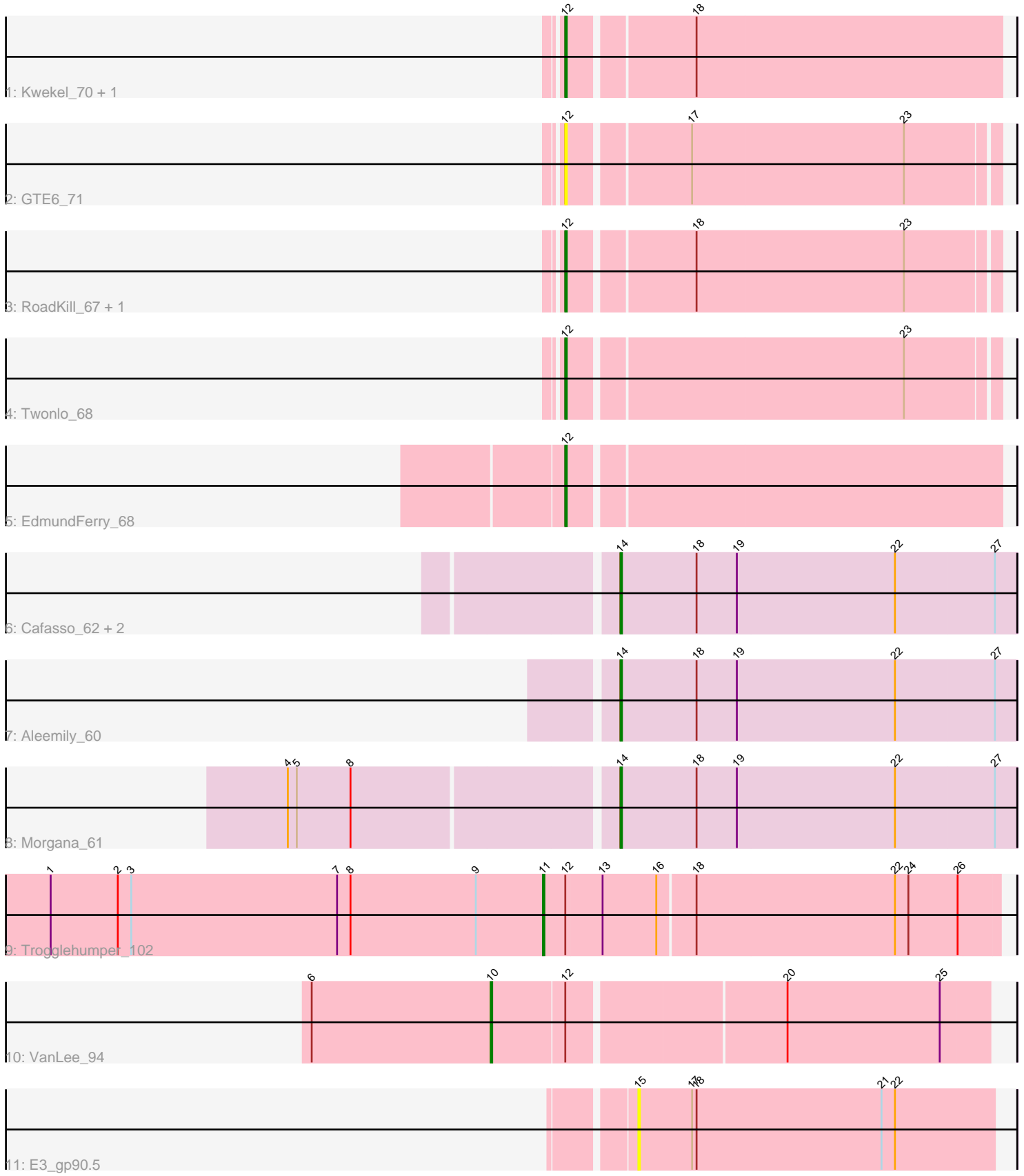


Pham 156759



Note: Tracks are now grouped by subcluster and scaled. Switching in subcluster is indicated by changes in track color. Track scale is now set by default to display the region 30 bp upstream of start 1 to 30 bp downstream of the last possible start. If this default region is judged to be packed too tightly with annotated starts, the track will be further scaled to only show that region of the ORF with annotated starts. This action will be indicated by adding "Zoomed" to the title. For starts, yellow indicates the location of called starts comprised solely of Glimmer/GeneMark auto-annotations, green indicates the location of called starts with at least 1 manual gene annotation.

Pham 156759 Report

This analysis was run 04/12/24 on database version 558.

Pham number 156759 has 15 members, 4 are drafts.

Phages represented in each track:

- Track 1 : Kwekel_70, Chickadee_70
- Track 2 : GTE6_71
- Track 3 : RoadKill_67, Tiamoceli_69
- Track 4 : Twonlo_68
- Track 5 : EdmundFerry_68
- Track 6 : Cafasso_62, ObLaDi_61, ModicumRichard_61
- Track 7 : Aleemily_60
- Track 8 : Morgana_61
- Track 9 : Trogglehumper_102
- Track 10 : VanLee_94
- Track 11 : E3_gp90.5

Summary of Final Annotations (See graph section above for start numbers):

The start number called the most often in the published annotations is 12, it was called in 5 of the 11 non-draft genes in the pham.

Genes that call this "Most Annotated" start:

- Chickadee_70, EdmundFerry_68, GTE6_71, Kwekel_70, RoadKill_67, Tiamoceli_69, Twonlo_68,

Genes that have the "Most Annotated" start but do not call it:

- Trogglehumper_102, VanLee_94,

Genes that do not have the "Most Annotated" start:

- Aleemily_60, Cafasso_62, E3_gp90.5, ModicumRichard_61, Morgana_61, ObLaDi_61,

Summary by start number:

Start 10:

- Found in 1 of 15 (6.7%) of genes in pham
- Manual Annotations of this start: 1 of 11
- Called 100.0% of time when present

- Phage (with cluster) where this start called: VanLee_94 (singleton),

Start 11:

- Found in 1 of 15 (6.7%) of genes in pham
- Manual Annotations of this start: 1 of 11
- Called 100.0% of time when present
- Phage (with cluster) where this start called: Trogglehumper_102 (singleton),

Start 12:

- Found in 9 of 15 (60.0%) of genes in pham
- Manual Annotations of this start: 5 of 11
- Called 77.8% of time when present
- Phage (with cluster) where this start called: Chickadee_70 (DE3), EdmundFerry_68 (DE3), GTE6_71 (DE3), Kwekel_70 (DE3), RoadKill_67 (DE3), Tiamoceli_69 (DE3), Twonlo_68 (DE3),

Start 14:

- Found in 5 of 15 (33.3%) of genes in pham
- Manual Annotations of this start: 4 of 11
- Called 100.0% of time when present
- Phage (with cluster) where this start called: Aleemily_60 (DZ), Cafasso_62 (DZ), ModicumRichard_61 (DZ), Morgana_61 (DZ), ObLaDi_61 (DZ),

Start 15:

- Found in 1 of 15 (6.7%) of genes in pham
- No Manual Annotations of this start.
- Called 100.0% of time when present
- Phage (with cluster) where this start called: E3_gp90.5 (singleton),

Summary by clusters:

There are 3 clusters represented in this pham: singleton, DE3, DZ,

Info for manual annotations of cluster DE3:

- Start number 12 was manually annotated 5 times for cluster DE3.

Info for manual annotations of cluster DZ:

- Start number 14 was manually annotated 4 times for cluster DZ.

Gene Information:

Gene: Aleemily_60 Start: 42108, Stop: 42371, Start Num: 14

Candidate Starts for Aleemily_60:

(Start: 14 @42108 has 4 MA's), (18, 42159), (19, 42186), (22, 42291), (27, 42357),

Gene: Cafasso_62 Start: 42732, Stop: 42995, Start Num: 14

Candidate Starts for Cafasso_62:

(Start: 14 @42732 has 4 MA's), (18, 42783), (19, 42810), (22, 42915), (27, 42981),

Gene: Chickadee_70 Start: 50218, Stop: 50499, Start Num: 12

Candidate Starts for Chickadee_70:

(Start: 12 @50218 has 5 MA's), (18, 50296),

Gene: E3_gp90.5 Start: 52452, Stop: 52688, Start Num: 15

Candidate Starts for E3_gp90.5:

(15, 52452), (17, 52488), (18, 52491), (21, 52614), (22, 52623),

Gene: EdmundFerry_68 Start: 49770, Stop: 50051, Start Num: 12

Candidate Starts for EdmundFerry_68:

(Start: 12 @49770 has 5 MA's),

Gene: GTE6_71 Start: 51011, Stop: 51286, Start Num: 12

Candidate Starts for GTE6_71:

(Start: 12 @51011 has 5 MA's), (17, 51086), (23, 51227),

Gene: Kwekel_70 Start: 50131, Stop: 50412, Start Num: 12

Candidate Starts for Kwekel_70:

(Start: 12 @50131 has 5 MA's), (18, 50209),

Gene: ModicumRichard_61 Start: 42735, Stop: 42998, Start Num: 14

Candidate Starts for ModicumRichard_61:

(Start: 14 @42735 has 4 MA's), (18, 42786), (19, 42813), (22, 42918), (27, 42984),

Gene: Morgana_61 Start: 42693, Stop: 42956, Start Num: 14

Candidate Starts for Morgana_61:

(4, 42483), (5, 42489), (8, 42525), (Start: 14 @42693 has 4 MA's), (18, 42744), (19, 42771), (22, 42876), (27, 42942),

Gene: ObLaDi_61 Start: 42680, Stop: 42943, Start Num: 14

Candidate Starts for ObLaDi_61:

(Start: 14 @42680 has 4 MA's), (18, 42731), (19, 42758), (22, 42863), (27, 42929),

Gene: RoadKill_67 Start: 49636, Stop: 49911, Start Num: 12

Candidate Starts for RoadKill_67:

(Start: 12 @49636 has 5 MA's), (18, 49714), (23, 49852),

Gene: Tiamoceli_69 Start: 51098, Stop: 51373, Start Num: 12

Candidate Starts for Tiamoceli_69:

(Start: 12 @51098 has 5 MA's), (18, 51176), (23, 51314),

Gene: Trogglehumper_102 Start: 71943, Stop: 71644, Start Num: 11

Candidate Starts for Trogglehumper_102:

(1, 72273), (2, 72228), (3, 72219), (7, 72081), (8, 72072), (9, 71988), (Start: 11 @71943 has 1 MA's), (Start: 12 @71928 has 5 MA's), (13, 71904), (16, 71868), (18, 71844), (22, 71712), (24, 71703), (26, 71670),

Gene: Twonlo_68 Start: 50190, Stop: 50465, Start Num: 12

Candidate Starts for Twonlo_68:

(Start: 12 @50190 has 5 MA's), (23, 50406),

Gene: VanLee_94 Start: 51351, Stop: 51671, Start Num: 10

Candidate Starts for VanLee_94:

(6, 51231), (Start: 10 @51351 has 1 MA's), (Start: 12 @51399 has 5 MA's), (20, 51537), (25, 51639),