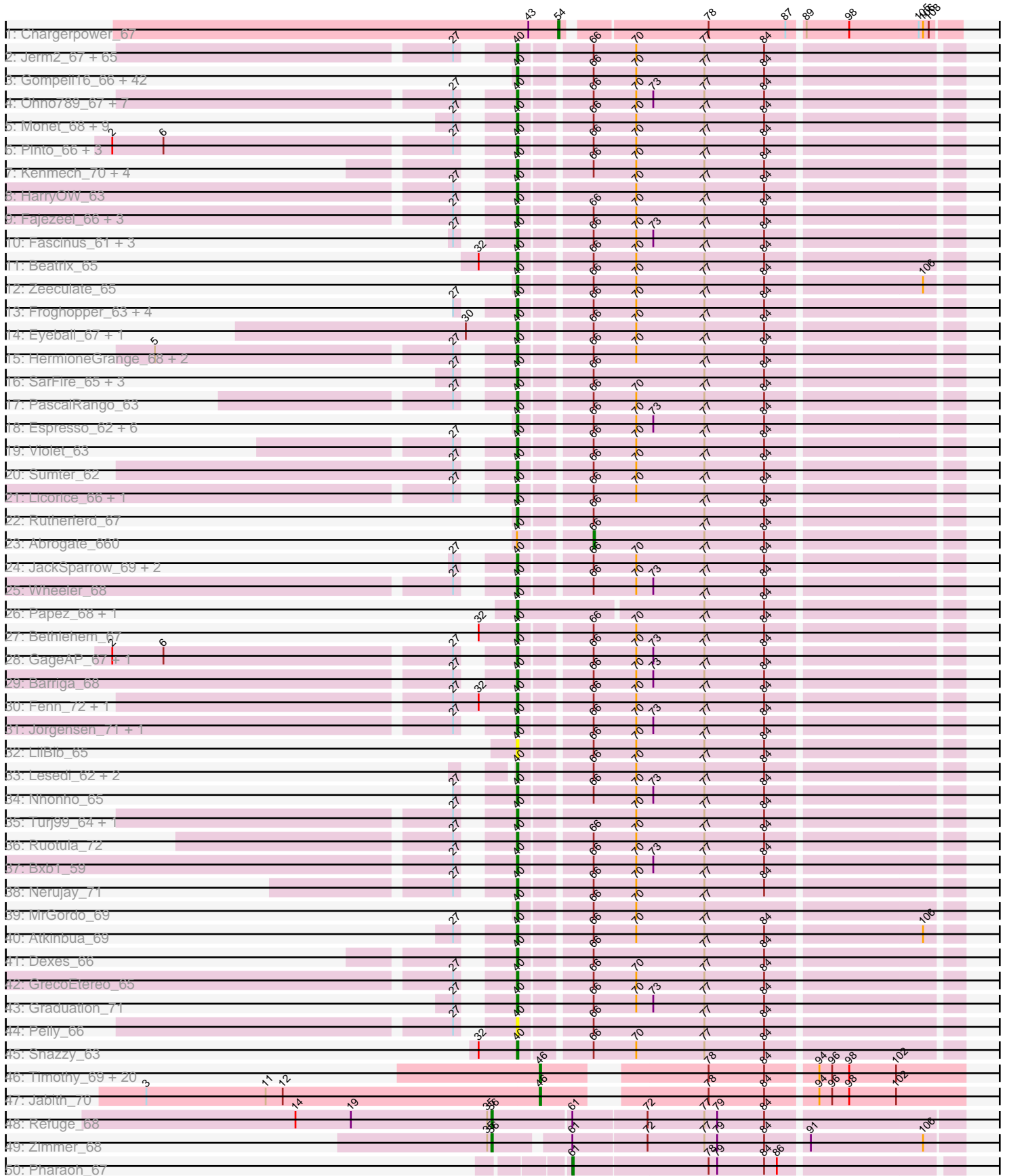
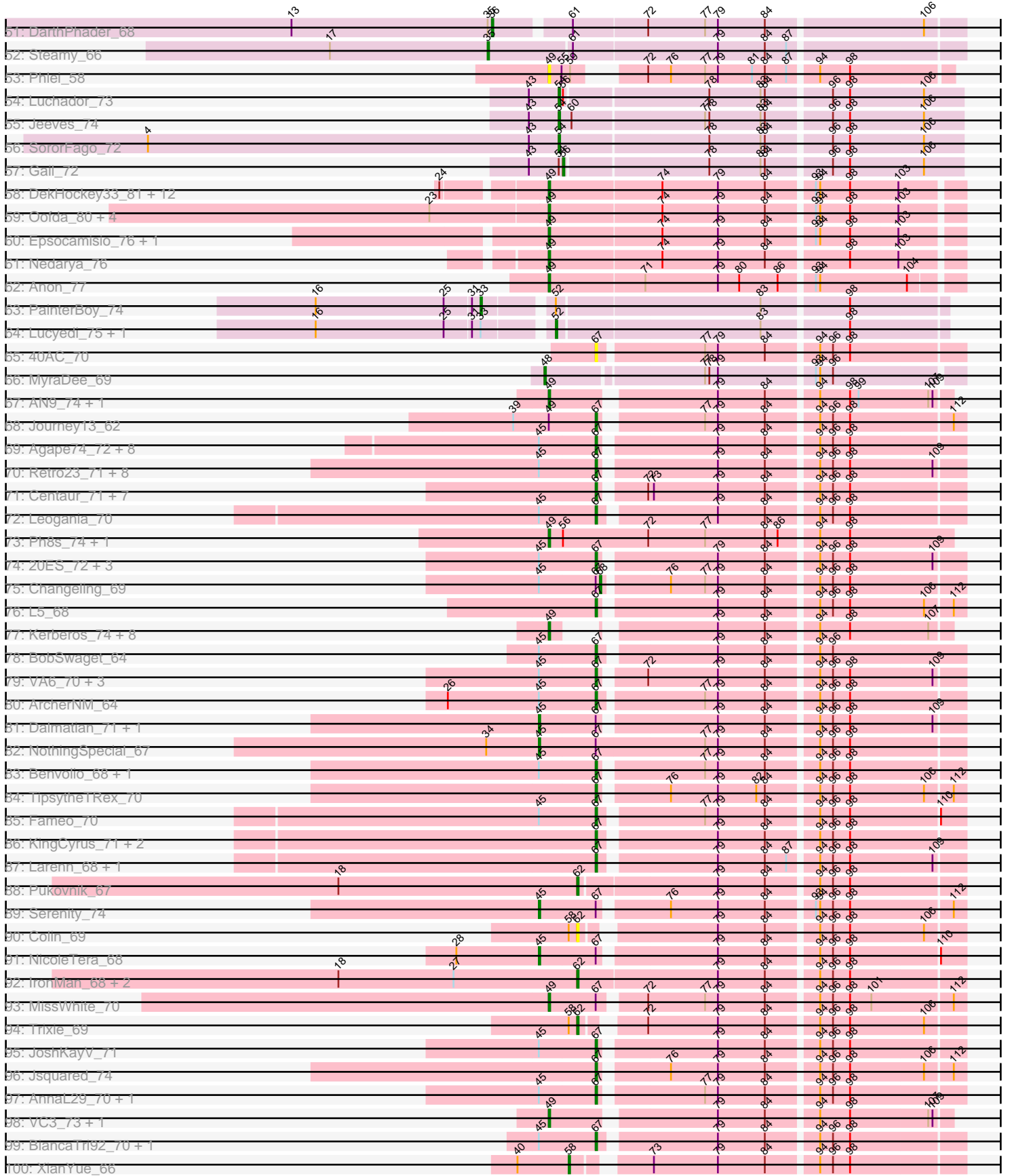


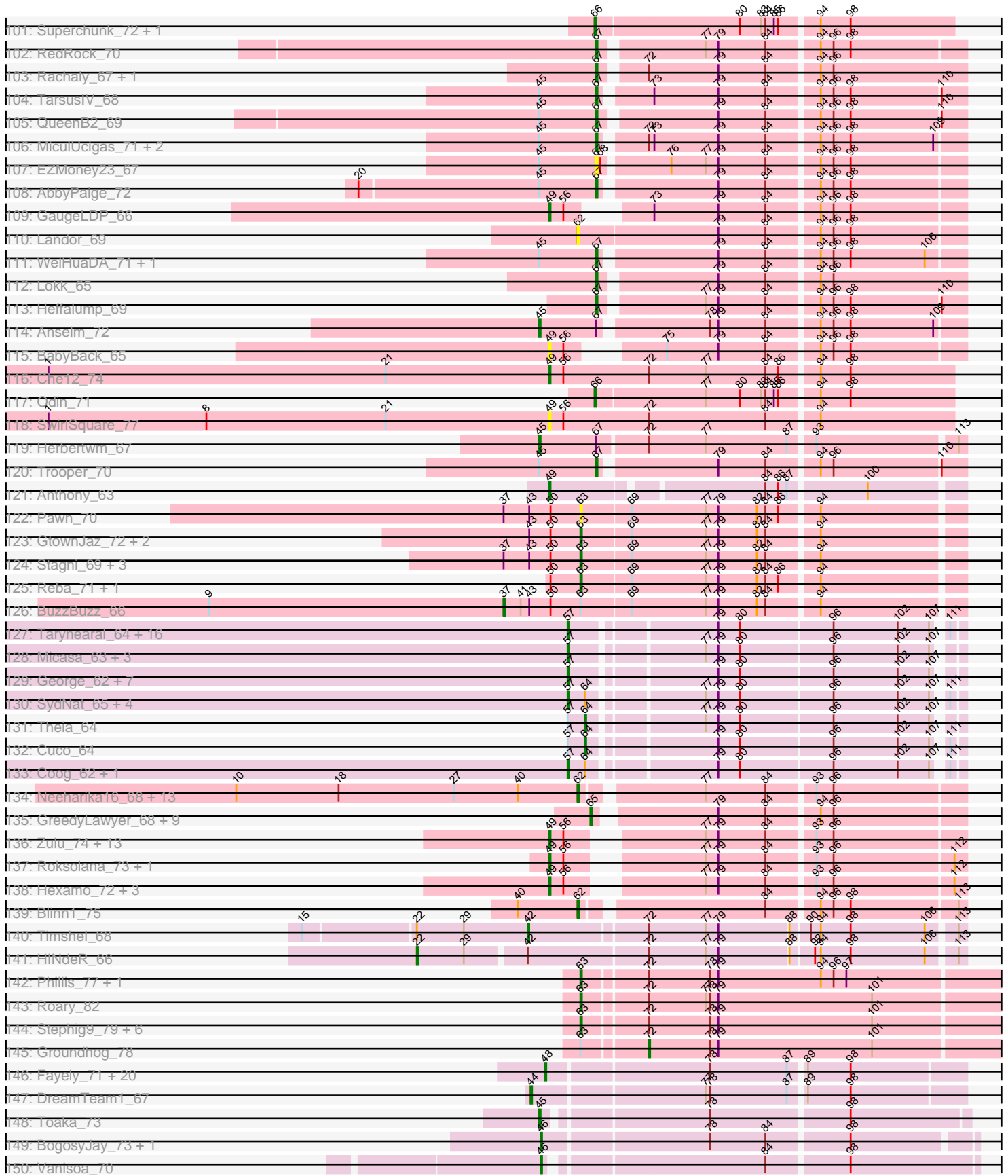
Pham 157472



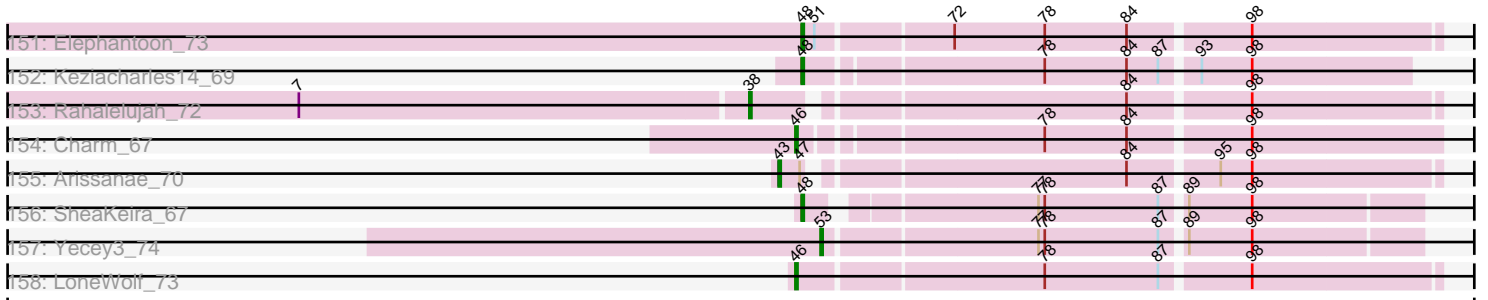
Pham 157472



Pham 157472



Pham 157472



Note: Tracks are now grouped by subcluster and scaled. Switching in subcluster is indicated by changes in track color. Track scale is now set by default to display the region 30 bp upstream of start 1 to 30 bp downstream of the last possible start. If this default region is judged to be packed too tightly with annotated starts, the track will be further scaled to only show that region of the ORF with annotated starts. This action will be indicated by adding "Zoomed" to the title. For starts, yellow indicates the location of called starts comprised solely of Glimmer/GeneMark auto-annotations, green indicates the location of called starts with at least 1 manual gene annotation.

Pham 157472 Report

This analysis was run 04/13/24 on database version 558.

Pham number 157472 has 516 members, 39 are drafts.

Phages represented in each track:

- Track 1 : Chargerpower_67
- Track 2 : Jerm2_67, QTRlifeCrisis_69, Homines_57, Swole_65, Petp2012_69, StrongArm_64, Briton15_70, MaryBeth_63, Lopton_66, SwissCheese_69, Corvo_66, HanShotFirst_67, Arcanine_68, Tote_62, DrFeelGood_64, TwoPeat_65, DreamCatcher_68, Rufus_68, Gwendoluna_70, PSullivan_63, NEHalo_63, Marcell_62, Chanagan_59, PinkPlastic_65, Pita2_67, Moose_67, Mryolo_64, Ringer_69, Kugel_70, MetalQZJ_62, IgnatiusPatJac_66, ConceptII_70, Zephyr_67, DD5_66, JuliaChild_67, Burton_67, Hope4ever_67, Lockley_65, Sibs6_68, Slagathor_68, Blue_66, Anglerfish_66, RidgeCB_66, BluSpix_64, Pippin_65, McGuire_66, BeesKnees_68, Rohr_67, Ichabod_70, Arlo_64, Molly_67, Killigrew_64, Dynamix_67, U2_62, Museum_68, Rajelicia_66, PattyP_68, Bexan_63, Euphoria_65, Bob3_67, TheloniousMonk_70, Ciao_63, Forsytheast_67, Magnito_67, Rubeus_65, BaconJack_71
- Track 3 : Gompeii16_66, Peterson_69, PacerPaul_66, Bircsak_66, Target_69, Sunshine924_71, Mule_63, STLscum_75, A6_58, Alsfro_72, Paraselene_67, Pepe_64, Tasp14_69, Dulcie_66, Rhynn_62, Sagefire_67, Smairt_68, Marsha_66, Agaliana_61, Perseus_64, Aeneas_69, Smeagol_68, Doom_63, Squee_69, BigPaolini_62, BillKnuckles_63, Manatee_66, Scowl_67, Carlyle_67, Makemake_72, Adahisdi_65, Big3_66, ILeeKay_68, SkiPole_74, BK1_58, PhrostyMug_66, Francis47_65, Zeuska_71, Switzer_67, Paphu_65, KBG_67, Traft412_69, Lamina13_69
- Track 4 : Ohno789_67, SpikeBT_64, BPBiabs31_69, Bruns_68, Applejack_66, Ashballer_69, Kanely_67, Altman_68
- Track 5 : Monet_68, Wilkins_64, Topgun_63, JC27_70, Fushigi_61, Oogway_64, Marge_62, Edtherson_64, Magnar_65, Norz_65
- Track 6 : Pinto_66, StewieG_60, Kykar_67, Petruccio_68
- Track 7 : Kenmech_70, Abbyshoes_68, Dussy_67, Teodoridan_65, Ajay_65
- Track 8 : HarryOW_63
- Track 9 : Fajezeel_66, Acme_67, Watermelon_65, Greg_66
- Track 10 : Fascinus_61, Maroc7_65, Solon_64, Bigfoot_59
- Track 11 : Beatrix_65
- Track 12 : Zeeculate_65
- Track 13 : Froghopper_63, Dreamboat_68, PherrisBueller_67, Jasper_67, Pari_70
- Track 14 : Eyeball_67, Bones_64
- Track 15 : HermioneGrange_68, MPlant7149_66, BigMau_68
- Track 16 : SarFire_65, Gyzlar_61, Thor_65, KyMonks1A_70
- Track 17 : PascalRango_63

- Track 18 : Espresso_62, Gandalf20_68, Tripl3t_70, Niza_68, Michley_70, Parliament_67, Cueylyss_65
- Track 19 : Violet_63
- Track 20 : Sumter_62
- Track 21 : Licorice_66, Buttons_62
- Track 22 : Rutherferd_67
- Track 23 : Abrogate_660
- Track 24 : JackSparrow_69, CactusRose_67, Crispicious1_63
- Track 25 : Wheeler_68
- Track 26 : Papez_68, Alvin_65
- Track 27 : Bethlehem_67
- Track 28 : GageAP_67, AFIS_62
- Track 29 : Barriga_68
- Track 30 : Fenn_72, Naira_71
- Track 31 : Jorgensen_71, Treddle_66
- Track 32 : LilBib_65
- Track 33 : Lesedi_62, KSSJEB_65, Trouble_66
- Track 34 : Nhonho_65
- Track 35 : Turj99_64, Hermia_61
- Track 36 : Ruotula_72
- Track 37 : Bxb1_59
- Track 38 : Nerujay_71
- Track 39 : MrGordo_69
- Track 40 : Atkinbua_69
- Track 41 : Dexes_66
- Track 42 : GrecoEtereo_65
- Track 43 : Graduation_71
- Track 44 : Pelly_66
- Track 45 : Snazzy_63
- Track 46 : Timothy_69, Bachome_71, Aneem_70, Ebony_69, Salz_68, Hutc2_68, Flaverint_70, Bowtie_70, Orange_68, Sham4_69, Mabel_69, Lucivia_70, Snape_69, Munch_69, Gilberta_70, Et2Brutus_68, MaCh_69, Fibonacci_69, Bud_68, Mulciber_68, Petersenfast_67
- Track 47 : Jabith_70
- Track 48 : Refuge_68
- Track 49 : Zimmer_68
- Track 50 : Pharaoh_67
- Track 51 : DARTHPhader_68
- Track 52 : Steamy_66
- Track 53 : Phlei_58
- Track 54 : Luchador_73
- Track 55 : Jeeves_74
- Track 56 : SororFago_72
- Track 57 : Gail_72
- Track 58 : DekHockey33_81, Switzerland_79, Anaysia_80, Boohoo_80, LastResort_78, Rosalind_78, Battleship_82, ReMo_78, MinecraftSteve_80, KatherineG_80, Looper_79, Nebulosus_77, ShayRa_80
- Track 59 : Oofda_80, Remus_81, Strosahl_81, Soups_80, Waits_80
- Track 60 : Epsocamisio_76, JSwag_79
- Track 61 : Nedarya_76
- Track 62 : Anon_77
- Track 63 : PainterBoy_74
- Track 64 : Lucyedi_75, EagleEye_76

- Track 65 : 40AC_70
- Track 66 : MyraDee_69
- Track 67 : AN9_74, ANI8_74
- Track 68 : Journey13_62
- Track 69 : Agape74_72, Dignity_72, LilTurb_71, Turbido_71, Buggy_72, Jerm_72, Leviathan_72, Smeagan_73, Whabigail7_71
- Track 70 : Retro23_71, SnapTap_70, Crucio_71, QueenBeesly_71, Georgie2_72, FiringLine_71, Power_70, SemperFi_71, SweetiePie_70
- Track 71 : Centaur_71, WideWale_71, Equemioh13_70, Drake55_72, Baehexic_69, Piro94_70, HarryHoudini_71, Updawg_71
- Track 72 : Leogania_70
- Track 73 : Ph8s_74, Adzzy_74
- Track 74 : 20ES_72, First_0071, LadyBird_74, CRB1_72
- Track 75 : Changeling_69
- Track 76 : L5_68
- Track 77 : Kerberos_74, Tomathan_74, D32_73, StarStuff_74, Duplo_74, DBQu4n_74, D29_68, Pomar16_73, Naji_74
- Track 78 : BobSwaget_64
- Track 79 : VA6_70, AN3_72, Deloris_70, BengiVuitton_70
- Track 80 : ArcherNM_64
- Track 81 : Dalmatian_71, DudeLittle_69
- Track 82 : NothingSpecial_67
- Track 83 : Benvolio_68, Echild_71
- Track 84 : TopsytheTRex_70
- Track 85 : Fameo_70
- Track 86 : KingCyrus_71, ChipMunk_72, EvilGenius_71
- Track 87 : Larenn_68, Malec_69
- Track 88 : Pukovnik_67
- Track 89 : Serenity_74
- Track 90 : Colin_69
- Track 91 : NicoleTera_68
- Track 92 : IronMan_68, Phaded_66, Jaan_69
- Track 93 : MissWhite_70
- Track 94 : Trixie_69
- Track 95 : JoshKayV_71
- Track 96 : Jsquared_74
- Track 97 : AnnaL29_70, Loser_72
- Track 98 : VC3_73, C3_67
- Track 99 : BiancaTri92_70, Acolyte_62
- Track 100 : XianYue_66
- Track 101 : Superchunk_72, Caraxes_73
- Track 102 : RedRock_70
- Track 103 : Rachaly_67, Miko_65
- Track 104 : TarsusIV_68
- Track 105 : QueenB2_69
- Track 106 : MiculUcigas_71, Flare16_71, NaSiaTalie_71
- Track 107 : EZMoney23_67
- Track 108 : AbbyPaige_72
- Track 109 : GaugeLDP_66
- Track 110 : Landor_69
- Track 111 : WeiHuaDA_71, Kalpine_70
- Track 112 : Lokk_65
- Track 113 : Heffalump_69

- Track 114 : Anselm_72
- Track 115 : BabyBack_65
- Track 116 : Che12_74
- Track 117 : Odin_71
- Track 118 : SwirlSquare_77
- Track 119 : Herbertwm_67
- Track 120 : Trooper_70
- Track 121 : Anthony_63
- Track 122 : Pawn_70
- Track 123 : GtownJaz_72, Grif_70, LarryKay_72
- Track 124 : Stagni_69, Bxz2_67, HashRod_73, Phoebe_73
- Track 125 : Reba_71, Phranny_72
- Track 126 : BuzzBuzz_66
- Track 127 : Tarynearal_64, Tiger_65, Benedict_69, AgentM_65, Jabiru_67, Phlorence_64, Jovo_66, PickleBack_66, ElTiger69_71, UnionJack_69, Lev2_66, Aragog_65, ForGetIt_66, Naca_68, Discoknowium_63, Conspiracy_66, Airmid_68
- Track 128 : Micasa_63, Bonamassa_65, Dublin_65, MarysWell_65
- Track 129 : George_62, LittleCherry_64, Swirley_65, Scorpia_69, Chadwick_69, PetterN_73, HuhtaEnerson15_63, Milcery_65
- Track 130 : SydNat_65, Bluefalcon_61, Archetta_63, Ghoulboy_65, Zolita_64
- Track 131 : Theia_64
- Track 132 : Cuco_64
- Track 133 : Coog_62, Midas2_62
- Track 134 : Neeharika16_68, SuperAwesome_71, JewelBug_71, Gladiator_69, Priamo_73, Pmask_70, Isiphiwo_69, BABullseye_64, Newrala_71, Cookiedough_71, Dorothea_68, Jordennis_70, McFly_71, SuperCallie99_68
- Track 135 : GreedyLawyer_68, VohminGhazi_71, Kazan_72, Candra_69, EricB_70, Kipper29_71, Chartreuse_68, DaVinci_69, Hoot_66, SmellyB_71
- Track 136 : Zulu_74, Helmet_74, Indra_76, Garak_74, WunderPhul_73, Zaka_73, Jeffabunny_73, Wiks_72, Hammer_73, Yokurt_72, Blue7_74, Rifter_73, Tucker_73, ToneTone_70
- Track 137 : Roksolana_73, Gruunaga_72
- Track 138 : Hexamo_72, Artemis2UCLA_72, Koko_74, CloudWang3_73
- Track 139 : Blinn1_75
- Track 140 : Timshel_68
- Track 141 : HINdeR_66
- Track 142 : Phillis_77, NearlyHeadless_81
- Track 143 : Roary_82
- Track 144 : Stephig9_79, Dixon_79, Danforth_81, Smeadley_80, Astro_80, Expelliarmus_77, Saintus_76
- Track 145 : Groundhog_78
- Track 146 : Fayely_71, Myxus_73, Priya_71, Catalina_75, EmyBug_67, Aliter_74, Phonnegut_73, Conquerage_71, Alma_71, Spouty_68, HortumSL17_74, PackMan_72, Pioneer_73, Tubs_73, Beemo_73, Qobbit_71, Phaeder_73, ExplosioNervosa_71, Scherzo_72, Ugenie5_68, Eidsmoe_71
- Track 147 : DreamTeam1_67
- Track 148 : Toaka_73
- Track 149 : BogosyJay_73, Maminiaina_73
- Track 150 : Vanisoa_70
- Track 151 : Elephantoon_73
- Track 152 : Keziacharles14_69
- Track 153 : Rahalelujah_72
- Track 154 : Charm_67

- Track 155 : Arissanae_70
- Track 156 : SheaKeira_67
- Track 157 : Yecey3_74
- Track 158 : LoneWolf_73

Summary of Final Annotations (See graph section above for start numbers):

The start number called the most often in the published annotations is 40, it was called in 190 of the 477 non-draft genes in the pham.

Genes that call this "Most Annotated" start:

- A6_58, AFIS_62, Abbyshoes_68, Acme_67, Adahisdi_65, Aeneas_69, Agaliana_61, Ajay_65, Alsfro_72, Altman_68, Alvin_65, Anglerfish_66, Applejack_66, Arcanine_68, Arlo_64, Ashballer_69, Atkinbua_69, BK1_58, BPBiebs31_69, BaconJack_71, Barriga_68, Beatrix_65, BeesKnees_68, Bethlehem_67, Bexan_63, Big3_66, BigMau_68, BigPaolini_62, Bigfoot_59, BillKnuckles_63, Bircsak_66, BluSpix_64, Blue_66, Bob3_67, Bones_64, Briton15_70, Bruns_68, Burton_67, Buttons_62, Bxb1_59, CactusRose_67, Carlyle_67, Chanagan_59, Ciao_63, ConceptII_70, Corvo_66, Crispicous1_63, Cueylyss_65, DD5_66, Dexes_66, Doom_63, DrFeelGood_64, DreamCatcher_68, Dreamboat_68, Dulcie_66, Dussy_67, Dynamix_67, Edtherson_64, Espresso_62, Euphoria_65, Eyeball_67, Fajezeel_66, Fascinus_61, Fenn_72, Forsytheast_67, Francis47_65, Froghopper_63, Fushigi_61, GageAP_67, Gandalf20_68, Gompeii16_66, Graduation_71, GrecoEtereo_65, Greg_66, Gwendoluna_70, Gyzlar_61, HanShotFirst_67, HarryOW_63, Hermia_61, HermioneGrange_68, Homines_57, Hope4ever_67, ILeeKay_68, Ichabod_70, IgnatiusPatJac_66, JC27_70, JackSparrow_69, Jasper_67, Jerm2_67, Jorgensen_71, JuliaChild_67, KBG_67, KSSJEB_65, Kanely_67, Kenmech_70, Killigrew_64, Kugel_70, KyMonks1A_70, Kykar_67, Lamina13_69, Lesedi_62, Licorice_66, LilBib_65, Lockley_65, Lopton_66, MPlant7149_66, Magnar_65, Magnito_67, Makemake_72, Manatee_66, Marcell_62, Marge_62, Maroc7_65, Marsha_66, MaryBeth_63, McGuire_66, MetalQZJ_62, Michley_70, Molly_67, Monet_68, Moose_67, MrGordo_69, Mryolo_64, Mule_63, Museum_68, NEHalo_63, Naira_71, Nerujay_71, Nhonho_65, Niza_68, Norz_65, Ohno789_67, Oogway_64, PSullivan_63, PacerPaul_66, Papez_68, Paphu_65, Paraselene_67, Pari_70, Parliament_67, PascalRango_63, PattyP_68, Pelly_66, Pepe_64, Perseus_64, Peterson_69, Petp2012_69, Petruccio_68, PherrisBueller_67, PhrostyMug_66, PinkPlastic_65, Pinto_66, Pippin_65, Pita2_67, QTRlifeCrisis_69, Rajelicia_66, Rhynn_62, RidgeCB_66, Ringer_69, Rohr_67, Rubeus_65, Rufus_68, Ruotula_72, Rutherferd_67, STLscum_75, Sagefire_67, SarFire_65, Scowl_67, Sibs6_68, SkiPole_74, Slagathor_68, Smairt_68, Smeagol_68, Snazzy_63, Solon_64, SpikeBT_64, Squee_69, StewieG_60, StrongArm_64, Sumter_62, Sunshine924_71, SwissCheese_69, Switzer_67, Swole_65, Target_69, Tasp14_69, Teodoridan_65, TheloniousMonk_70, Thor_65, Topgun_63, Tote_62, Traft412_69, Treddle_66, Tripl3t_70, Trouble_66, Turj99_64, TwoPeat_65, U2_62, Violet_63, Watermelon_65, Wheeler_68, Wilkins_64, Zeeculate_65, Zephyr_67, Zeuska_71,

Genes that have the "Most Annotated" start but do not call it:

- Abrogate_660, BABullseye_64, Blinn1_75, Cookiedough_71, Dorothea_68, Gladiator_69, Isiphiwo_69, JewelBug_71, Jordennis_70, McFly_71, Neeharika16_68, Newrala_71, Pmask_70, Priamo_73, SuperAwesome_71, SuperCallie99_68,

XianYue_66,

Genes that do not have the "Most Annotated" start:

- 20ES_72, 40AC_70, AN3_72, AN9_74, ANI8_74, AbbyPaige_72, Acolyte_62, Adzzy_74, Agape74_72, AgentM_65, Airmid_68, Aliter_74, Alma_71, Anaysia_80, Aneem_70, AnnaL29_70, Anon_77, Anselm_72, Anthony_63, Aragog_65, ArcherNM_64, Archetta_63, Arissanee_70, Artemis2UCLA_72, Astro_80, BabyBack_65, Bachome_71, Baehexic_69, Battleship_82, Beemo_73, Benedict_69, BengiVuitton_70, Benvolio_68, BiancaTri92_70, Blue7_74, Bluefalcon_61, BobSwaget_64, BogosyJay_73, Bonamassa_65, Boohoo_80, Bowtie_70, Bud_68, Buggy_72, BuzzBuzz_66, Bxz2_67, C3_67, CRB1_72, Candra_69, Caraxes_73, Catalina_75, Centaur_71, Chadwick_69, Changeling_69, Chargerpower_67, Charm_67, Chartreuse_68, Che12_74, ChipMunk_72, CloudWang3_73, Colin_69, Conquerage_71, Conspiracy_66, Coog_62, Crucio_71, Cuco_64, D29_68, D32_73, DBQu4n_74, DaVinci_69, Dalmatian_71, Danforth_81, DarthPhader_68, DekHockey33_81, Deloris_70, Dignity_72, Discoknowium_63, Dixon_79, Drake55_72, DreamTeam1_67, Dublin_65, DudeLittle_69, Duplo_74, EZMoney23_67, EagleEye_76, Ebony_69, Echild_71, Eidsmoe_71, ElTiger69_71, Elephantoon_73, EmyBug_67, Epsocamisio_76, Equemioh13_70, EricB_70, Et2Brutus_68, EvilGenius_71, Expelliarmus_77, ExplosioNervosa_71, Fameo_70, Fayely_71, Fibonacci_69, FiringLine_71, First_0071, Flare16_71, Flaverint_70, ForGetIt_66, Gail_72, Garak_74, GaugeLDP_66, George_62, Georgie2_72, Ghoulyboy_65, Gilberta_70, GreedyLawyer_68, Grif_70, Groundhog_78, Gruunaga_72, GtownJaz_72, HINdeR_66, Hammer_73, HarryHoudini_71, HashRod_73, Heffalump_69, Helmet_74, Herbertwm_67, Hexamo_72, Hoot_66, HortumSL17_74, HuhtaEnerson15_63, Hutc2_68, Indra_76, IronMan_68, JSwag_79, Jaan_69, Jabiru_67, Jabith_70, Jeeves_74, Jeffabunny_73, Jerm_72, JoshKayV_71, Journey13_62, Jovo_66, Jsquared_74, Kalpine_70, KatherineG_80, Kazan_72, Kerberos_74, Keziacharles14_69, KingCyrus_71, Kipper29_71, Koko_74, L5_68, LadyBird_74, Landor_69, Larenn_68, LarryKay_72, LastResort_78, Leogania_70, Lev2_66, Leviathan_72, LiITurb_71, LittleCherry_64, Lokk_65, LoneWolf_73, Looper_79, Loser_72, Luchador_73, Lucivia_70, Lucyedi_75, MaCh_69, Mabel_69, Malec_69, Maminiaina_73, MarysWell_65, Micasa_63, MiculUcigas_71, Midas2_62, Miko_65, Milcery_65, MinecraftSteve_80, MissWhite_70, Mulciber_68, Munch_69, MyraDee_69, Myxus_73, NaSiaTalie_71, Naca_68, Naji_74, NearlyHeadless_81, Nebulosus_77, Nedarya_76, NicoleTera_68, NothingSpecial_67, Odin_71, Oofda_80, Orange_68, PackMan_72, PainterBoy_74, Pawn_70, Petersenfast_67, PetterN_73, Ph8s_74, Phaded_66, Phaeder_73, Pharaoh_67, Phillis_77, Phlei_58, Phlorence_64, Phoebe_73, Phonnegut_73, Phranny_72, PickleBack_66, Pioneer_73, Piro94_70, Pomar16_73, Power_70, Priya_71, Pukovnik_67, Qobbit_71, QueenB2_69, QueenBeesly_71, Rachaly_67, Rahalelujah_72, ReMo_78, Reba_71, RedRock_70, Refuge_68, Remus_81, Retro23_71, Rifter_73, Roary_82, Roksolana_73, Rosalind_78, Saintus_76, Salz_68, Scherzo_72, Scorpia_69, SemperFi_71, Serenity_74, Sham4_69, ShayRa_80, SheaKeira_67, Smeadley_80, Smeagan_73, SmellyB_71, SnapTap_70, Snape_69, SororFago_72, Soups_80, Spouty_68, Stagni_69, StarStuff_74, Steamy_66, StepHig9_79, Strosahl_81, Superchunk_72, SweetiePie_70, SwirlSquare_77, Swirley_65, Switzerland_79, SydNat_65, TarsusIV_68, Tarynearal_64, Theia_64, Tiger_65, Timothy_69, Timshel_68, TipsytheTRex_70, Toaka_73, Tomathan_74, ToneTone_70, Trixie_69, Trooper_70, Tubs_73, Tucker_73, Turbido_71, Ugenie5_68, UnionJack_69, Updawg_71, VA6_70, VC3_73, Vanisoa_70, VohminGhazi_71, Waits_80, WeiHuaDA_71, Whabigail7_71, WideWale_71, Wiks_72, WunderPhul_73, Yecey3_74, Yokurt_72, Zaka_73, Zimmer_68, Zolita_64, Zulu_74,

Summary by start number:

Start 22:

- Found in 2 of 516 (0.4%) of genes in pham
- Manual Annotations of this start: 1 of 477
- Called 50.0% of time when present
- Phage (with cluster) where this start called: HINdeR_66 (A7),

Start 33:

- Found in 3 of 516 (0.6%) of genes in pham
- Manual Annotations of this start: 1 of 477
- Called 33.3% of time when present
- Phage (with cluster) where this start called: PainterBoy_74 (A16),

Start 35:

- Found in 4 of 516 (0.8%) of genes in pham
- Manual Annotations of this start: 1 of 477
- Called 25.0% of time when present
- Phage (with cluster) where this start called: Steamy_66 (A12),

Start 36:

- Found in 3 of 516 (0.6%) of genes in pham
- Manual Annotations of this start: 3 of 477
- Called 100.0% of time when present
- Phage (with cluster) where this start called: DARTHPhader_68 (A12), Refuge_68 (A12), Zimmer_68 (A12),

Start 37:

- Found in 6 of 516 (1.2%) of genes in pham
- Manual Annotations of this start: 1 of 477
- Called 16.7% of time when present
- Phage (with cluster) where this start called: BuzzBuzz_66 (A3),

Start 38:

- Found in 1 of 516 (0.2%) of genes in pham
- Manual Annotations of this start: 1 of 477
- Called 100.0% of time when present
- Phage (with cluster) where this start called: Rahalelujah_72 (A9),

Start 40:

- Found in 222 of 516 (43.0%) of genes in pham
- Manual Annotations of this start: 190 of 477
- Called 92.3% of time when present
- Phage (with cluster) where this start called: A6_58 (A1), AFIS_62 (A1), Abbysshoes_68 (A1), Acme_67 (A1), Adahisdi_65 (A1), Aeneas_69 (A1), Agaliana_61 (A1), Ajay_65 (A1), Alsfro_72 (A1), Altman_68 (A1), Alvin_65 (A1), Anglerfish_66 (A1), Applejack_66 (A1), Arcanine_68 (A1), Arlo_64 (A1), Ashballer_69 (A1), Atkinbua_69 (A1), BK1_58 (A1), BPBiebs31_69 (A1), BaconJack_71 (A1), Barriga_68 (A1), Beatrix_65 (A1), BeesKnees_68 (A1), Bethlehem_67 (A1), Bexan_63 (A1), Big3_66 (A1), BigMau_68 (A1), BigPaolini_62 (A1), Bigfoot_59 (A1), BillKnuckles_63 (A1), Bircsak_66 (A1), BluSpix_64 (A1), Blue_66 (A1), Bob3_67 (A1), Bones_64 (A1), Briton15_70 (A1), Bruns_68 (A1), Burton_67 (A1), Buttons_62

(A1), Bxb1_59 (A1), CactusRose_67 (A1), Carlyle_67 (A1), Chanagan_59 (A1), Ciao_63 (A1), ConceptII_70 (A1), Corvo_66 (A1), Crispicous1_63 (A1), Cueyliss_65 (A1), DD5_66 (A1), Dexes_66 (A1), Doom_63 (A1), DrFeelGood_64 (A1), DreamCatcher_68 (A1), Dreamboat_68 (A1), Dulcie_66 (A1), Dussy_67 (A1), Dynamix_67 (A1), Edtherson_64 (A1), Espresso_62 (A1), Euphoria_65 (A1), Eyeball_67 (A1), Fajezeel_66 (A1), Fascinus_61 (A1), Fenn_72 (A1), Forsytheast_67 (A1), Francis47_65 (A1), FrogHopper_63 (A1), Fushigi_61 (A1), GageAP_67 (A1), Gandalf20_68 (A1), Gompeii16_66 (A1), Graduation_71 (A1), GrecoEtereo_65 (A1), Greg_66 (A1), Gwendoluna_70 (A1), Gyzlar_61 (A1), HanShotFirst_67 (A1), HarryOW_63 (A1), Hermia_61 (A1), HermioneGrange_68 (A1), Homines_57 (A1), Hope4ever_67 (A1), ILeeKay_68 (A1), Ichabod_70 (A1), IgnatiusPatJac_66 (A1), JC27_70 (A1), JackSparrow_69 (A1), Jasper_67 (A1), Jerm2_67 (A1), Jorgensen_71 (A1), JuliaChild_67 (A1), KBG_67 (A1), KSSJEB_65 (A1), Kanely_67 (A1), Kenmech_70 (A1), Killigrew_64 (A1), Kugel_70 (A1), KyMonks1A_70 (A1), Kykar_67 (A1), Lamina13_69 (A1), Lesedi_62 (A1), Licorice_66 (A1), LilBib_65 (A1), Lockley_65 (A1), Lopton_66 (A1), MPlant7149_66 (A1), Magnar_65 (A1), Magnito_67 (A1), Makemake_72 (A1), Manatee_66 (A1), Marcell_62 (A1), Marge_62 (A1), Maroc7_65 (A1), Marsha_66 (A1), MaryBeth_63 (A1), McGuire_66 (A1), MetalQZJ_62 (A1), Michley_70 (A1), Molly_67 (A1), Monet_68 (A1), Moose_67 (A1), MrGordo_69 (A1), Mryolo_64 (A1), Mule_63 (A1), Museum_68 (A1), NEHalo_63 (A1), Naira_71 (A1), Nerujay_71 (A1), Nhonho_65 (A1), Niza_68 (A1), Norz_65 (A1), Ohno789_67 (A1), Oogway_64 (A1), PSullivan_63 (A1), PacerPaul_66 (A1), Papez_68 (A1), Paphu_65 (A1), Paraselene_67 (A1), Pari_70 (A1), Parliament_67 (A1), PascalRango_63 (A1), PattyP_68 (A1), Pelly_66 (A1), Pepe_64 (A1), Perseus_64 (A1), Peterson_69 (A1), Petp2012_69 (A1), Petruccio_68 (A1), PherrisBueller_67 (A1), PhrostyMug_66 (A1), PinkPlastic_65 (A1), Pinto_66 (A1), Pippin_65 (A1), Pita2_67 (A1), QTRlifeCrisis_69 (A1), Rajelicia_66 (A1), Rhynn_62 (A1), RidgeCB_66 (A1), Ringer_69 (A1), Rohr_67 (A1), Rubeus_65 (A1), Rufus_68 (A1), Ruotula_72 (A1), Rutherford_67 (A1), STLscum_75 (A1), Sagefire_67 (A1), SarFire_65 (A1), Scowl_67 (A1), Sibs6_68 (A1), SkiPole_74 (A1), Slagathor_68 (A1), Smairt_68 (A1), Smeagol_68 (A1), Snazzy_63 (A1), Solon_64 (A1), SpikeBT_64 (A1), Squee_69 (A1), StewieG_60 (A1), StrongArm_64 (A1), Sumter_62 (A1), Sunshine924_71 (A1), SwissCheese_69 (A1), Switzer_67 (A1), Swole_65 (A1), Target_69 (A1), Tasp14_69 (A1), Teodoridan_65 (A1), TheloniousMonk_70 (A1), Thor_65 (A1), Topgun_63 (A1), Tote_62 (A1), Traft412_69 (A1), Treddle_66 (A1), Tripl3t_70 (A1), Trouble_66 (A1), Turj99_64 (A1), TwoPeat_65 (A1), U2_62 (A1), Violet_63 (A1), Watermelon_65 (A1), Wheeler_68 (A1), Wilkins_64 (A1), Zeeculate_65 (A1), Zephyr_67 (A1), Zeuska_71 (A1),

Start 42:

- Found in 2 of 516 (0.4%) of genes in pham
- Manual Annotations of this start: 1 of 477
- Called 50.0% of time when present
- Phage (with cluster) where this start called: Timshel_68 (A7),

Start 43:

- Found in 15 of 516 (2.9%) of genes in pham
- Manual Annotations of this start: 1 of 477
- Called 6.7% of time when present
- Phage (with cluster) where this start called: Arissanæ_70 (A9),

Start 44:

- Found in 1 of 516 (0.2%) of genes in pham

- Manual Annotations of this start: 1 of 477
- Called 100.0% of time when present
- Phage (with cluster) where this start called: DreamTeam1_67 (A9),

Start 45:

- Found in 56 of 516 (10.9%) of genes in pham
- Manual Annotations of this start: 8 of 477
- Called 14.3% of time when present
- Phage (with cluster) where this start called: Anselm_72 (A2), Dalmatian_71 (A2), DudeLittle_69 (A2), Herbertwm_67 (A2), NicoleTera_68 (A2), NothingSpecial_67 (A2), Serenity_74 (A2), Toaka_73 (A9),

Start 46:

- Found in 27 of 516 (5.2%) of genes in pham
- Manual Annotations of this start: 26 of 477
- Called 100.0% of time when present
- Phage (with cluster) where this start called: Aneem_70 (A11), Bachome_71 (A11), BogosyJay_73 (A9), Bowtie_70 (A11), Bud_68 (A11), Charm_67 (A9), Ebony_69 (A11), Et2Brutus_68 (A11), Fibonacci_69 (A11), Flaverint_70 (A11), Gilberta_70 (A11), Hutc2_68 (A11), Jabith_70 (A11), LoneWolf_73 (A9), Lucivia_70 (A11), MaCh_69 (A11), Mabel_69 (A11), Maminaiaina_73 (A9), Mulciber_68 (A11), Munch_69 (A11), Orange_68 (A11), Petersenfast_67 (A11), Salz_68 (A11), Sham4_69 (A11), Snape_69 (A11), Timothy_69 (A11), Vanisoa_70 (A9),

Start 48:

- Found in 25 of 516 (4.8%) of genes in pham
- Manual Annotations of this start: 23 of 477
- Called 100.0% of time when present
- Phage (with cluster) where this start called: Aliter_74 (A9), Alma_71 (A9), Beemo_73 (A9), Catalina_75 (A9), Conquerage_71 (A9), Eidsmoe_71 (A9), Elephantoon_73 (A9), EmyBug_67 (A9), ExplosioNervosa_71 (A9), Fayely_71 (A9), HortumSL17_74 (A9), Keziacharles14_69 (A9), MyraDee_69 (A18), Myxus_73 (A9), PackMan_72 (A9), Phaeder_73 (A9), Phonnegut_73 (A9), Pioneer_73 (A9), Priya_71 (A9), Qobbit_71 (A9), Scherzo_72 (A9), SheaKeira_67 (A9), Spouty_68 (A9), Tubs_73 (A9), Ugenie5_68 (A9),

Start 49:

- Found in 65 of 516 (12.6%) of genes in pham
- Manual Annotations of this start: 58 of 477
- Called 98.5% of time when present
- Phage (with cluster) where this start called: AN9_74 (A2), ANI8_74 (A2), Adzzy_74 (A2), Anaysia_80 (A15), Anon_77 (A15), Anthony_63 (A20), Artemis2UCLA_72 (A6), BabyBack_65 (A2), Battleship_82 (A15), Blue7_74 (A6), Boohoo_80 (A15), C3_67 (A2), Che12_74 (A2), CloudWang3_73 (A6), D29_68 (A2), D32_73 (A2), DBQu4n_74 (A2), DekHockey33_81 (A15), Duplo_74 (A2), Epsocamisio_76 (A15), Garak_74 (A6), GaugeLDP_66 (A2), Gruunaga_72 (A6), Hammer_73 (A6), Helmet_74 (A6), Hexamo_72 (A6), Indra_76 (A6), JSwag_79 (A15), Jeffabunny_73 (A6), KatherineG_80 (A15), Kerberos_74 (A2), Koko_74 (A6), LastResort_78 (A15), Looper_79 (A15), MinecraftSteve_80 (A15), MissWhite_70 (A2), Naji_74 (A2), Nebulosus_77 (A15), Nedarya_76 (A15), Oofda_80 (A15), Ph8s_74 (A2), Phlei_58 (A13), Pomar16_73 (A2), ReMo_78 (A15), Remus_81 (A15), Rifter_73 (A6), Roksolana_73 (A6), Rosalind_78 (A15), ShayRa_80 (A15), Soups_80 (A15), StarStuff_74 (A2), Strosahl_81 (A15), SwirlSquare_77 (A2), Switzerland_79 (A15),

Tomathan_74 (A2), ToneTone_70 (A6), Tucker_73 (A6), VC3_73 (A2), Waits_80 (A15), Wiks_72 (A6), WunderPhul_73 (A6), Yokurt_72 (A6), Zaka_73 (A6), Zulu_74 (A6),

Start 52:

- Found in 3 of 516 (0.6%) of genes in pham
- Manual Annotations of this start: 2 of 477
- Called 66.7% of time when present
- Phage (with cluster) where this start called: EagleEye_76 (A16), Lucyedi_75 (A16),

Start 53:

- Found in 1 of 516 (0.2%) of genes in pham
- Manual Annotations of this start: 1 of 477
- Called 100.0% of time when present
- Phage (with cluster) where this start called: Yecey3_74 (A9),

Start 54:

- Found in 5 of 516 (1.0%) of genes in pham
- Manual Annotations of this start: 4 of 477
- Called 80.0% of time when present
- Phage (with cluster) where this start called: Chargerpower_67 (A), Jeeves_74 (A14), Luchador_73 (A14), SororFago_72 (A14),

Start 56:

- Found in 28 of 516 (5.4%) of genes in pham
- Manual Annotations of this start: 1 of 477
- Called 3.6% of time when present
- Phage (with cluster) where this start called: Gail_72 (A14),

Start 57:

- Found in 38 of 516 (7.4%) of genes in pham
- Manual Annotations of this start: 35 of 477
- Called 94.7% of time when present
- Phage (with cluster) where this start called: AgentM_65 (A5), Airmid_68 (A5), Aragog_65 (A5), Archetta_63 (A5), Benedict_69 (A5), Bluefalcon_61 (A5), Bonamassa_65 (A5), Chadwick_69 (A5), Conspiracy_66 (A5), Coog_62 (A5), Discoknowium_63 (A5), Dublin_65 (A5), EITiger69_71 (A5), ForGetIt_66 (A5), George_62 (A5), Ghoulboy_65 (A5), HuhtaEnerson15_63 (A5), Jabiru_67 (A5), Jovo_66 (A5), Lev2_66 (A5), LittleCherry_64 (A5), MarysWell_65 (A5), Micasa_63 (A5), Midas2_62 (A5), Milcery_65 (A5), Naca_68 (A5), PetterN_73 (A5), Phlorence_64 (A5), PickleBack_66 (A5), Scorpia_69 (A5), Swirley_65 (A5), SydNat_65 (A5), Tarynearal_64 (A5), Tiger_65 (A5), UnionJack_69 (A5), Zolita_64 (A5),

Start 58:

- Found in 3 of 516 (0.6%) of genes in pham
- Manual Annotations of this start: 1 of 477
- Called 33.3% of time when present
- Phage (with cluster) where this start called: XianYue_66 (A2),

Start 61:

- Found in 5 of 516 (1.0%) of genes in pham
- Manual Annotations of this start: 1 of 477

- Called 20.0% of time when present
- Phage (with cluster) where this start called: Pharaoh_67 (A12),

Start 62:

- Found in 22 of 516 (4.3%) of genes in pham
- Manual Annotations of this start: 18 of 477
- Called 100.0% of time when present
- Phage (with cluster) where this start called: BABullseye_64 (A6), Blinn1_75 (A6), Colin_69 (A2), Cookiedough_71 (A6), Dorothea_68 (A6), Gladiator_69 (A6), IronMan_68 (A2), Isiphiwo_69 (A6), Jaan_69 (A2), JewelBug_71 (A6), Jordennis_70 (A6), Landor_69 (A2), McFly_71 (A6), Neeharika16_68 (A6), Newrala_71 (A6), Phaded_66 (A2), Pmask_70 (A6), Priamo_73 (A6), Pukovnik_67 (A2), SuperAwesome_71 (A6), SuperCallie99_68 (A6), Trixie_69 (A2),

Start 63:

- Found in 22 of 516 (4.3%) of genes in pham
- Manual Annotations of this start: 19 of 477
- Called 90.9% of time when present
- Phage (with cluster) where this start called: Astro_80 (A8), Bxz2_67 (A3), Danforth_81 (A8), Dixon_79 (A8), Expelliarmus_77 (A8), Grif_70 (A3), GtownJaz_72 (A3), HashRod_73 (A3), LarryKay_72 (A3), NearlyHeadless_81 (A8), Pawn_70 (A3), Phillis_77 (A8), Phoebe_73 (A3), Phranny_72 (A3), Reba_71 (A3), Roary_82 (A8), Saintus_76 (A8), Smeadley_80 (A8), Stagni_69 (A3), Stepig9_79 (A8),

Start 64:

- Found in 9 of 516 (1.7%) of genes in pham
- Manual Annotations of this start: 2 of 477
- Called 22.2% of time when present
- Phage (with cluster) where this start called: Cuco_64 (A5), Theia_64 (A5),

Start 65:

- Found in 10 of 516 (1.9%) of genes in pham
- Manual Annotations of this start: 8 of 477
- Called 100.0% of time when present
- Phage (with cluster) where this start called: Candra_69 (A6), Chartreuse_68 (A6), DaVinci_69 (A6), EricB_70 (A6), GreedyLawyer_68 (A6), Hoot_66 (A6), Kazan_72 (A6), Kipper29_71 (A6), SmellyB_71 (A6), VohminGhazi_71 (A6),

Start 66:

- Found in 204 of 516 (39.5%) of genes in pham
- Manual Annotations of this start: 3 of 477
- Called 2.0% of time when present
- Phage (with cluster) where this start called: Abrogate_660 (A1), Caraxes_73 (A2), Odin_71 (A2), Superchunk_72 (A2),

Start 67:

- Found in 79 of 516 (15.3%) of genes in pham
- Manual Annotations of this start: 64 of 477
- Called 88.6% of time when present
- Phage (with cluster) where this start called: 20ES_72 (A2), 40AC_70 (A17), AN3_72 (A2), AbbyPaige_72 (A2), Acolyte_62 (A2), Agape74_72 (A2), AnnaL29_70 (A2), ArcherNM_64 (A2), Baehexic_69 (A2), BengiVuitton_70 (A2), Benvolio_68 (A2), BiancaTri92_70 (A2), BobSwaget_64 (A2), Buggy_72 (A2), CRB1_72 (A2),

Centaur_71 (A2), ChipMunk_72 (A2), Crucio_71 (A2), Deloris_70 (A2), Dignity_72 (A2), Drake55_72 (A2), EZMoney23_67 (A2), Echild_71 (A2), Equemioh13_70 (A2), EvilGenius_71 (A2), Fameo_70 (A2), FiringLine_71 (A2), First_0071 (A2), Flare16_71 (A2), Georgie2_72 (A2), HarryHoudini_71 (A2), Heffalump_69 (A2), Jerm_72 (A2), JoshKayV_71 (A2), Journey13_62 (A2), Jsquared_74 (A2), Kalpine_70 (A2), KingCyrus_71 (A2), L5_68 (A2), LadyBird_74 (A2), Larenn_68 (A2), Leogania_70 (A2), Leviathan_72 (A2), LiITurb_71 (A2), Lokk_65 (A2), Loser_72 (A2), Malec_69 (A2), MiculUcigas_71 (A2), Miko_65 (A2), NaSiaTalie_71 (A2), Piro94_70 (A2), Power_70 (A2), QueenB2_69 (A2), QueenBeesly_71 (A2), Rachaly_67 (A2), RedRock_70 (A2), Retro23_71 (A2), SemperFi_71 (A2), Smeagan_73 (A2), SnapTap_70 (A2), SweetiePie_70 (A2), TarsusIV_68 (A2), TipsytheTRex_70 (A2), Trooper_70 (A2), Turbido_71 (A2), Updawg_71 (A2), VA6_70 (A2), WeiHuaDA_71 (A2), Whabigail7_71 (A2), WideWale_71 (A2),

Start 68:

- Found in 2 of 516 (0.4%) of genes in pham
- Manual Annotations of this start: 1 of 477
- Called 50.0% of time when present
- Phage (with cluster) where this start called: Changeling_69 (A2),

Start 72:

- Found in 42 of 516 (8.1%) of genes in pham
- Manual Annotations of this start: 1 of 477
- Called 2.4% of time when present
- Phage (with cluster) where this start called: Groundhog_78 (A8),

Summary by clusters:

There are 18 clusters represented in this pham: A15, A14, A17, A16, A11, A, A13, A12, A18, A1, A20, A3, A2, A5, A7, A6, A9, A8,

Info for manual annotations of cluster A:

- Start number 54 was manually annotated 1 time for cluster A.

Info for manual annotations of cluster A1:

- Start number 40 was manually annotated 190 times for cluster A1.
- Start number 66 was manually annotated 1 time for cluster A1.

Info for manual annotations of cluster A11:

- Start number 46 was manually annotated 21 times for cluster A11.

Info for manual annotations of cluster A12:

- Start number 35 was manually annotated 1 time for cluster A12.
- Start number 36 was manually annotated 3 times for cluster A12.
- Start number 61 was manually annotated 1 time for cluster A12.

Info for manual annotations of cluster A14:

- Start number 54 was manually annotated 3 times for cluster A14.
- Start number 56 was manually annotated 1 time for cluster A14.

Info for manual annotations of cluster A15:

- Start number 49 was manually annotated 21 times for cluster A15.

Info for manual annotations of cluster A16:

- Start number 33 was manually annotated 1 time for cluster A16.
- Start number 52 was manually annotated 2 times for cluster A16.

Info for manual annotations of cluster A18:

- Start number 48 was manually annotated 1 time for cluster A18.

Info for manual annotations of cluster A2:

- Start number 45 was manually annotated 7 times for cluster A2.
- Start number 49 was manually annotated 18 times for cluster A2.
- Start number 58 was manually annotated 1 time for cluster A2.
- Start number 62 was manually annotated 5 times for cluster A2.
- Start number 66 was manually annotated 2 times for cluster A2.
- Start number 67 was manually annotated 64 times for cluster A2.
- Start number 68 was manually annotated 1 time for cluster A2.

Info for manual annotations of cluster A20:

- Start number 49 was manually annotated 1 time for cluster A20.

Info for manual annotations of cluster A3:

- Start number 37 was manually annotated 1 time for cluster A3.
- Start number 63 was manually annotated 9 times for cluster A3.

Info for manual annotations of cluster A5:

- Start number 57 was manually annotated 35 times for cluster A5.
- Start number 64 was manually annotated 2 times for cluster A5.

Info for manual annotations of cluster A6:

- Start number 49 was manually annotated 18 times for cluster A6.
- Start number 62 was manually annotated 13 times for cluster A6.
- Start number 65 was manually annotated 8 times for cluster A6.

Info for manual annotations of cluster A7:

- Start number 22 was manually annotated 1 time for cluster A7.
- Start number 42 was manually annotated 1 time for cluster A7.

Info for manual annotations of cluster A8:

- Start number 63 was manually annotated 10 times for cluster A8.
- Start number 72 was manually annotated 1 time for cluster A8.

Info for manual annotations of cluster A9:

- Start number 38 was manually annotated 1 time for cluster A9.
- Start number 43 was manually annotated 1 time for cluster A9.
- Start number 44 was manually annotated 1 time for cluster A9.
- Start number 45 was manually annotated 1 time for cluster A9.
- Start number 46 was manually annotated 5 times for cluster A9.
- Start number 48 was manually annotated 22 times for cluster A9.
- Start number 53 was manually annotated 1 time for cluster A9.

Gene Information:

Gene: 20ES_72 Start: 43073, Stop: 42834, Start Num: 67

Candidate Starts for 20ES_72:

(Start: 45 @43112 has 8 MA's), (Start: 67 @43073 has 64 MA's), (79, 42998), (84, 42965), (94, 42932), (96, 42923), (98, 42911), (109, 42854),

Gene: 40AC_70 Start: 43765, Stop: 43523, Start Num: 67

Candidate Starts for 40AC_70:

(Start: 67 @43765 has 64 MA's), (77, 43696), (79, 43687), (84, 43654), (94, 43621), (96, 43612), (98, 43600),

Gene: A6_58 Start: 40313, Stop: 40020, Start Num: 40

Candidate Starts for A6_58:

(Start: 40 @40313 has 190 MA's), (Start: 66 @40268 has 3 MA's), (70, 40238), (77, 40190), (84, 40148),

Gene: AFIS_62 Start: 41768, Stop: 41475, Start Num: 40

Candidate Starts for AFIS_62:

(2, 42026), (6, 41990), (27, 41795), (Start: 40 @41768 has 190 MA's), (Start: 66 @41723 has 3 MA's), (70, 41693), (73, 41681), (77, 41645), (84, 41603),

Gene: AN3_72 Start: 41788, Stop: 41549, Start Num: 67

Candidate Starts for AN3_72:

(Start: 45 @41827 has 8 MA's), (Start: 67 @41788 has 64 MA's), (Start: 72 @41761 has 1 MA's), (79, 41713), (84, 41680), (94, 41647), (96, 41638), (98, 41626), (109, 41569),

Gene: AN9_74 Start: 43176, Stop: 42916, Start Num: 49

Candidate Starts for AN9_74:

(Start: 49 @43176 has 58 MA's), (79, 43071), (84, 43038), (94, 43005), (98, 42984), (99, 42978), (107, 42930), (109, 42927),

Gene: ANI8_74 Start: 43176, Stop: 42916, Start Num: 49

Candidate Starts for ANI8_74:

(Start: 49 @43176 has 58 MA's), (79, 43071), (84, 43038), (94, 43005), (98, 42984), (99, 42978), (107, 42930), (109, 42927),

Gene: AbbyPaige_72 Start: 43323, Stop: 43084, Start Num: 67

Candidate Starts for AbbyPaige_72:

(20, 43485), (Start: 45 @43362 has 8 MA's), (Start: 67 @43323 has 64 MA's), (79, 43248), (84, 43215), (94, 43182), (96, 43173), (98, 43161),

Gene: Abbyshoes_68 Start: 43272, Stop: 42979, Start Num: 40

Candidate Starts for Abbyshoes_68:

(Start: 40 @43272 has 190 MA's), (Start: 66 @43227 has 3 MA's), (70, 43197), (77, 43149), (84, 43107),

Gene: Abrogate_660 Start: 44316, Stop: 44068, Start Num: 66

Candidate Starts for Abrogate_660:

(Start: 40 @44361 has 190 MA's), (Start: 66 @44316 has 3 MA's), (77, 44238), (84, 44196),

Gene: Acme_67 Start: 42824, Stop: 42531, Start Num: 40

Candidate Starts for Acme_67:

(27, 42851), (Start: 40 @42824 has 190 MA's), (Start: 66 @42779 has 3 MA's), (70, 42749), (77, 42701), (84, 42659),

Gene: Acolyte_62 Start: 41272, Stop: 41048, Start Num: 67

Candidate Starts for Acolyte_62:

(Start: 45 @41311 has 8 MA's), (Start: 67 @41272 has 64 MA's), (79, 41200), (84, 41167), (94, 41134), (96, 41125), (98, 41113),

Gene: Adahisdi_65 Start: 43768, Stop: 43475, Start Num: 40

Candidate Starts for Adahisdi_65:

(Start: 40 @43768 has 190 MA's), (Start: 66 @43723 has 3 MA's), (70, 43693), (77, 43645), (84, 43603),

Gene: Adzzy_74 Start: 41977, Stop: 41702, Start Num: 49

Candidate Starts for Adzzy_74:

(Start: 49 @41977 has 58 MA's), (Start: 56 @41968 has 1 MA's), (Start: 72 @41908 has 1 MA's), (77, 41869), (84, 41827), (86, 41818), (94, 41794), (98, 41773),

Gene: Aeneas_69 Start: 44571, Stop: 44278, Start Num: 40

Candidate Starts for Aeneas_69:

(Start: 40 @44571 has 190 MA's), (Start: 66 @44526 has 3 MA's), (70, 44496), (77, 44448), (84, 44406),

Gene: Agaliana_61 Start: 39647, Stop: 39354, Start Num: 40

Candidate Starts for Agaliana_61:

(Start: 40 @39647 has 190 MA's), (Start: 66 @39602 has 3 MA's), (70, 39572), (77, 39524), (84, 39482),

Gene: Agape74_72 Start: 43317, Stop: 43078, Start Num: 67

Candidate Starts for Agape74_72:

(Start: 45 @43356 has 8 MA's), (Start: 67 @43317 has 64 MA's), (79, 43242), (84, 43209), (94, 43176), (96, 43167), (98, 43155),

Gene: AgentM_65 Start: 41621, Stop: 41370, Start Num: 57

Candidate Starts for AgentM_65:

(Start: 57 @41621 has 35 MA's), (79, 41528), (80, 41513), (96, 41450), (102, 41405), (107, 41384), (111, 41378),

Gene: Airmid_68 Start: 42454, Stop: 42200, Start Num: 57

Candidate Starts for Airmid_68:

(Start: 57 @42454 has 35 MA's), (79, 42361), (80, 42346), (96, 42283), (102, 42238), (107, 42217), (111, 42211),

Gene: Ajay_65 Start: 42714, Stop: 42421, Start Num: 40

Candidate Starts for Ajay_65:

(Start: 40 @42714 has 190 MA's), (Start: 66 @42669 has 3 MA's), (70, 42639), (77, 42591), (84, 42549),

Gene: Aliter_74 Start: 42621, Stop: 42343, Start Num: 48

Candidate Starts for Aliter_74:

(Start: 48 @42621 has 23 MA's), (78, 42513), (87, 42459), (89, 42450), (98, 42420),

Gene: Alma_71 Start: 42598, Stop: 42323, Start Num: 48

Candidate Starts for Alma_71:

(Start: 48 @42598 has 23 MA's), (78, 42490), (87, 42436), (89, 42427), (98, 42397),

Gene: Alsfro_72 Start: 43165, Stop: 42872, Start Num: 40

Candidate Starts for Alsfro_72:

(Start: 40 @43165 has 190 MA's), (Start: 66 @43120 has 3 MA's), (70, 43090), (77, 43042), (84, 43000),

Gene: Altman_68 Start: 42803, Stop: 42510, Start Num: 40

Candidate Starts for Altman_68:

(27, 42830), (Start: 40 @42803 has 190 MA's), (Start: 66 @42758 has 3 MA's), (70, 42728), (73, 42716), (77, 42680), (84, 42638),

Gene: Alvin_65 Start: 42599, Stop: 42303, Start Num: 40

Candidate Starts for Alvin_65:

(Start: 40 @42599 has 190 MA's), (77, 42473), (84, 42431),

Gene: Anaysia_80 Start: 43699, Stop: 43421, Start Num: 49

Candidate Starts for Anaysia_80:

(24, 43759), (Start: 49 @43699 has 58 MA's), (74, 43621), (79, 43582), (84, 43549), (93, 43519), (94, 43516), (98, 43495), (103, 43462),

Gene: Aneem_70 Start: 42035, Stop: 41769, Start Num: 46

Candidate Starts for Aneem_70:

(Start: 46 @42035 has 26 MA's), (78, 41942), (84, 41903), (94, 41870), (96, 41861), (98, 41849), (102, 41816),

Gene: Anglerfish_66 Start: 42975, Stop: 42682, Start Num: 40

Candidate Starts for Anglerfish_66:

(27, 43002), (Start: 40 @42975 has 190 MA's), (Start: 66 @42930 has 3 MA's), (70, 42900), (77, 42852), (84, 42810),

Gene: AnnaL29_70 Start: 43273, Stop: 43034, Start Num: 67

Candidate Starts for AnnaL29_70:

(Start: 45 @43312 has 8 MA's), (Start: 67 @43273 has 64 MA's), (77, 43207), (79, 43198), (84, 43165), (94, 43132), (96, 43123), (98, 43111),

Gene: Anon_77 Start: 43390, Stop: 43115, Start Num: 49

Candidate Starts for Anon_77:

(Start: 49 @43390 has 58 MA's), (71, 43324), (79, 43273), (80, 43258), (86, 43231), (93, 43210), (94, 43207), (104, 43147),

Gene: Anselm_72 Start: 43506, Stop: 43228, Start Num: 45

Candidate Starts for Anselm_72:

(Start: 45 @43506 has 8 MA's), (Start: 67 @43467 has 64 MA's), (78, 43398), (79, 43392), (84, 43359), (94, 43326), (96, 43317), (98, 43305), (109, 43248),

Gene: Anthony_63 Start: 40063, Stop: 39797, Start Num: 49

Candidate Starts for Anthony_63:

(Start: 49 @40063 has 58 MA's), (84, 39925), (86, 39916), (87, 39910), (100, 39859),

Gene: Applejack_66 Start: 41373, Stop: 41080, Start Num: 40

Candidate Starts for Applejack_66:

(27, 41400), (Start: 40 @41373 has 190 MA's), (Start: 66 @41328 has 3 MA's), (70, 41298), (73, 41286), (77, 41250), (84, 41208),

Gene: Aragog_65 Start: 41641, Stop: 41390, Start Num: 57

Candidate Starts for Aragog_65:

(Start: 57 @41641 has 35 MA's), (79, 41548), (80, 41533), (96, 41470), (102, 41425), (107, 41404), (111, 41398),

Gene: Arcanine_68 Start: 43699, Stop: 43406, Start Num: 40

Candidate Starts for Arcanine_68:

(27, 43726), (Start: 40 @43699 has 190 MA's), (Start: 66 @43654 has 3 MA's), (70, 43624), (77, 43576), (84, 43534),

Gene: ArcherNM_64 Start: 42544, Stop: 42302, Start Num: 67

Candidate Starts for ArcherNM_64:

(26, 42646), (Start: 45 @42583 has 8 MA's), (Start: 67 @42544 has 64 MA's), (77, 42475), (79, 42466), (84, 42433), (94, 42400), (96, 42391), (98, 42379),

Gene: Archetta_63 Start: 41587, Stop: 41336, Start Num: 57

Candidate Starts for Archetta_63:

(Start: 57 @41587 has 35 MA's), (Start: 64 @41575 has 2 MA's), (77, 41503), (79, 41494), (80, 41479), (96, 41416), (102, 41371), (107, 41350), (111, 41344),

Gene: Arissanae_70 Start: 42870, Stop: 42583, Start Num: 43

Candidate Starts for Arissanae_70:

(Start: 43 @42870 has 1 MA's), (47, 42861), (84, 42723), (95, 42684), (98, 42669),

Gene: Arlo_64 Start: 42290, Stop: 41997, Start Num: 40

Candidate Starts for Arlo_64:

(27, 42317), (Start: 40 @42290 has 190 MA's), (Start: 66 @42245 has 3 MA's), (70, 42215), (77, 42167), (84, 42125),

Gene: Artemis2UCLA_72 Start: 41385, Stop: 41128, Start Num: 49

Candidate Starts for Artemis2UCLA_72:

(Start: 49 @41385 has 58 MA's), (Start: 56 @41376 has 1 MA's), (77, 41301), (79, 41292), (84, 41259), (93, 41229), (96, 41217), (112, 41136),

Gene: Ashballer_69 Start: 43449, Stop: 43156, Start Num: 40

Candidate Starts for Ashballer_69:

(27, 43476), (Start: 40 @43449 has 190 MA's), (Start: 66 @43404 has 3 MA's), (70, 43374), (73, 43362), (77, 43326), (84, 43284),

Gene: Astro_80 Start: 44089, Stop: 43805, Start Num: 63

Candidate Starts for Astro_80:

(Start: 63 @44089 has 19 MA's), (Start: 72 @44047 has 1 MA's), (78, 44005), (79, 43999), (101, 43891),

Gene: Atkinbua_69 Start: 42674, Stop: 42381, Start Num: 40

Candidate Starts for Atkinbua_69:

(27, 42701), (Start: 40 @42674 has 190 MA's), (Start: 66 @42629 has 3 MA's), (70, 42599), (77, 42551), (84, 42509), (106, 42404),

Gene: BABullseye_64 Start: 38991, Stop: 38743, Start Num: 62

Candidate Starts for BABullseye_64:

(10, 39231), (18, 39159), (27, 39078), (Start: 40 @39033 has 190 MA's), (Start: 62 @38991 has 18 MA's), (77, 38916), (84, 38874), (93, 38844), (96, 38832),

Gene: BK1_58 Start: 40313, Stop: 40020, Start Num: 40

Candidate Starts for BK1_58:

(Start: 40 @40313 has 190 MA's), (Start: 66 @40268 has 3 MA's), (70, 40238), (77, 40190), (84, 40148),

Gene: BPBiabs31_69 Start: 43396, Stop: 43103, Start Num: 40

Candidate Starts for BPBiabs31_69:

(27, 43423), (Start: 40 @43396 has 190 MA's), (Start: 66 @43351 has 3 MA's), (70, 43321), (73, 43309), (77, 43273), (84, 43231),

Gene: BabyBack_65 Start: 43084, Stop: 42833, Start Num: 49

Candidate Starts for BabyBack_65:

(Start: 49 @43084 has 58 MA's), (Start: 56 @43075 has 1 MA's), (75, 43033), (79, 42997), (84, 42964), (94, 42931), (96, 42922), (98, 42910),

Gene: Bachome_71 Start: 42031, Stop: 41765, Start Num: 46

Candidate Starts for Bachome_71:

(Start: 46 @42031 has 26 MA's), (78, 41938), (84, 41899), (94, 41866), (96, 41857), (98, 41845), (102, 41812),

Gene: BaconJack_71 Start: 45661, Stop: 45368, Start Num: 40

Candidate Starts for BaconJack_71:

(27, 45688), (Start: 40 @45661 has 190 MA's), (Start: 66 @45616 has 3 MA's), (70, 45586), (77, 45538), (84, 45496),

Gene: Baehexic_69 Start: 42795, Stop: 42556, Start Num: 67

Candidate Starts for Baehexic_69:

(Start: 67 @42795 has 64 MA's), (Start: 72 @42768 has 1 MA's), (73, 42765), (79, 42720), (84, 42687), (94, 42654), (96, 42645), (98, 42633),

Gene: Barriga_68 Start: 41452, Stop: 41159, Start Num: 40

Candidate Starts for Barriga_68:

(27, 41479), (Start: 40 @41452 has 190 MA's), (Start: 66 @41407 has 3 MA's), (70, 41377), (73, 41365), (77, 41329), (84, 41287),

Gene: Battleship_82 Start: 43572, Stop: 43294, Start Num: 49

Candidate Starts for Battleship_82:

(24, 43632), (Start: 49 @43572 has 58 MA's), (74, 43494), (79, 43455), (84, 43422), (93, 43392), (94, 43389), (98, 43368), (103, 43335),

Gene: Beatrix_65 Start: 43536, Stop: 43243, Start Num: 40

Candidate Starts for Beatrix_65:

(32, 43563), (Start: 40 @43536 has 190 MA's), (Start: 66 @43491 has 3 MA's), (70, 43461), (77, 43413), (84, 43371),

Gene: Beemo_73 Start: 42639, Stop: 42361, Start Num: 48

Candidate Starts for Beemo_73:

(Start: 48 @42639 has 23 MA's), (78, 42531), (87, 42477), (89, 42468), (98, 42438),

Gene: BeesKnees_68 Start: 42003, Stop: 41710, Start Num: 40

Candidate Starts for BeesKnees_68:

(27, 42030), (Start: 40 @42003 has 190 MA's), (Start: 66 @41958 has 3 MA's), (70, 41928), (77, 41880), (84, 41838),

Gene: Benedict_69 Start: 42186, Stop: 41932, Start Num: 57

Candidate Starts for Benedict_69:

(Start: 57 @42186 has 35 MA's), (79, 42093), (80, 42078), (96, 42015), (102, 41970), (107, 41949), (111, 41943),

Gene: BengiVuitton_70 Start: 43050, Stop: 42811, Start Num: 67

Candidate Starts for BengiVuitton_70:

(Start: 45 @43089 has 8 MA's), (Start: 67 @43050 has 64 MA's), (Start: 72 @43023 has 1 MA's), (79, 42975), (84, 42942), (94, 42909), (96, 42900), (98, 42888), (109, 42831),

Gene: Benvolio_68 Start: 42707, Stop: 42468, Start Num: 67

Candidate Starts for Benvolio_68:

(Start: 45 @42746 has 8 MA's), (Start: 67 @42707 has 64 MA's), (77, 42641), (79, 42632), (84, 42599), (94, 42566), (96, 42557), (98, 42545),

Gene: Bethlehem_67 Start: 44314, Stop: 44021, Start Num: 40

Candidate Starts for Bethlehem_67:

(32, 44341), (Start: 40 @44314 has 190 MA's), (Start: 66 @44269 has 3 MA's), (70, 44239), (77, 44191), (84, 44149),

Gene: Bexan_63 Start: 43315, Stop: 43022, Start Num: 40

Candidate Starts for Bexan_63:

(27, 43342), (Start: 40 @43315 has 190 MA's), (Start: 66 @43270 has 3 MA's), (70, 43240), (77, 43192), (84, 43150),

Gene: BiancaTri92_70 Start: 43252, Stop: 43013, Start Num: 67

Candidate Starts for BiancaTri92_70:

(Start: 45 @43291 has 8 MA's), (Start: 67 @43252 has 64 MA's), (79, 43177), (84, 43144), (94, 43111), (96, 43102), (98, 43090),

Gene: Big3_66 Start: 43783, Stop: 43490, Start Num: 40

Candidate Starts for Big3_66:

(Start: 40 @43783 has 190 MA's), (Start: 66 @43738 has 3 MA's), (70, 43708), (77, 43660), (84, 43618),

Gene: BigMau_68 Start: 43204, Stop: 42911, Start Num: 40

Candidate Starts for BigMau_68:

(5, 43432), (27, 43231), (Start: 40 @43204 has 190 MA's), (Start: 66 @43159 has 3 MA's), (70, 43129), (77, 43081), (84, 43039),

Gene: BigPaolini_62 Start: 40440, Stop: 40147, Start Num: 40

Candidate Starts for BigPaolini_62:

(Start: 40 @40440 has 190 MA's), (Start: 66 @40395 has 3 MA's), (70, 40365), (77, 40317), (84, 40275),

Gene: Bigfoot_59 Start: 41835, Stop: 41542, Start Num: 40

Candidate Starts for Bigfoot_59:

(27, 41862), (Start: 40 @41835 has 190 MA's), (Start: 66 @41790 has 3 MA's), (70, 41760), (73, 41748), (77, 41712), (84, 41670),

Gene: BillKnuckles_63 Start: 43835, Stop: 43542, Start Num: 40

Candidate Starts for BillKnuckles_63:

(Start: 40 @43835 has 190 MA's), (Start: 66 @43790 has 3 MA's), (70, 43760), (77, 43712), (84, 43670),

Gene: Bircsak_66 Start: 44564, Stop: 44271, Start Num: 40

Candidate Starts for Bircsak_66:

(Start: 40 @44564 has 190 MA's), (Start: 66 @44519 has 3 MA's), (70, 44489), (77, 44441), (84, 44399),

Gene: Blinn1_75 Start: 41595, Stop: 41347, Start Num: 62

Candidate Starts for Blinn1_75:

(Start: 40 @41637 has 190 MA's), (Start: 62 @41595 has 18 MA's), (84, 41478), (94, 41445), (96, 41436), (98, 41424), (113, 41352),

Gene: BluSpix_64 Start: 38419, Stop: 38126, Start Num: 40

Candidate Starts for BluSpix_64:

(27, 38446), (Start: 40 @38419 has 190 MA's), (Start: 66 @38374 has 3 MA's), (70, 38344), (77, 38296), (84, 38254),

Gene: Blue_66 Start: 43535, Stop: 43242, Start Num: 40

Candidate Starts for Blue_66:

(27, 43562), (Start: 40 @43535 has 190 MA's), (Start: 66 @43490 has 3 MA's), (70, 43460), (77, 43412), (84, 43370),

Gene: Blue7_74 Start: 41605, Stop: 41348, Start Num: 49

Candidate Starts for Blue7_74:

(Start: 49 @41605 has 58 MA's), (Start: 56 @41596 has 1 MA's), (77, 41521), (79, 41512), (84, 41479), (93, 41449), (96, 41437),

Gene: Bluefalcon_61 Start: 41607, Stop: 41356, Start Num: 57

Candidate Starts for Bluefalcon_61:

(Start: 57 @41607 has 35 MA's), (Start: 64 @41595 has 2 MA's), (77, 41523), (79, 41514), (80, 41499), (96, 41436), (102, 41391), (107, 41370), (111, 41364),

Gene: Bob3_67 Start: 42474, Stop: 42181, Start Num: 40

Candidate Starts for Bob3_67:

(27, 42501), (Start: 40 @42474 has 190 MA's), (Start: 66 @42429 has 3 MA's), (70, 42399), (77, 42351), (84, 42309),

Gene: BobSwaget_64 Start: 41129, Stop: 40887, Start Num: 67

Candidate Starts for BobSwaget_64:

(Start: 45 @41168 has 8 MA's), (Start: 67 @41129 has 64 MA's), (79, 41054), (84, 41021), (94, 40988), (96, 40979),

Gene: BogosyJay_73 Start: 42852, Stop: 42568, Start Num: 46

Candidate Starts for BogosyJay_73:

(Start: 46 @42852 has 26 MA's), (78, 42741), (84, 42702), (98, 42648),

Gene: Bonamassa_65 Start: 41816, Stop: 41565, Start Num: 57

Candidate Starts for Bonamassa_65:

(Start: 57 @41816 has 35 MA's), (77, 41732), (79, 41723), (80, 41708), (96, 41645), (102, 41600), (107, 41579),

Gene: Bones_64 Start: 43490, Stop: 43197, Start Num: 40

Candidate Starts for Bones_64:

(30, 43526), (Start: 40 @43490 has 190 MA's), (Start: 66 @43445 has 3 MA's), (70, 43415), (77, 43367), (84, 43325),

Gene: Boohoo_80 Start: 43699, Stop: 43421, Start Num: 49

Candidate Starts for Boohoo_80:

(24, 43759), (Start: 49 @43699 has 58 MA's), (74, 43621), (79, 43582), (84, 43549), (93, 43519), (94, 43516), (98, 43495), (103, 43462),

Gene: Bowtie_70 Start: 42042, Stop: 41776, Start Num: 46

Candidate Starts for Bowtie_70:

(Start: 46 @42042 has 26 MA's), (78, 41949), (84, 41910), (94, 41877), (96, 41868), (98, 41856), (102, 41823),

Gene: Briton15_70 Start: 44278, Stop: 43985, Start Num: 40

Candidate Starts for Briton15_70:

(27, 44305), (Start: 40 @44278 has 190 MA's), (Start: 66 @44233 has 3 MA's), (70, 44203), (77, 44155), (84, 44113),

Gene: Bruns_68 Start: 42415, Stop: 42122, Start Num: 40

Candidate Starts for Bruns_68:

(27, 42442), (Start: 40 @42415 has 190 MA's), (Start: 66 @42370 has 3 MA's), (70, 42340), (73, 42328), (77, 42292), (84, 42250),

Gene: Bud_68 Start: 41589, Stop: 41323, Start Num: 46

Candidate Starts for Bud_68:

(Start: 46 @41589 has 26 MA's), (78, 41496), (84, 41457), (94, 41424), (96, 41415), (98, 41403), (102, 41370),

Gene: Buggy_72 Start: 43370, Stop: 43131, Start Num: 67

Candidate Starts for Buggy_72:

(Start: 45 @43409 has 8 MA's), (Start: 67 @43370 has 64 MA's), (79, 43295), (84, 43262), (94, 43229), (96, 43220), (98, 43208),

Gene: Burton_67 Start: 44237, Stop: 43944, Start Num: 40

Candidate Starts for Burton_67:

(27, 44264), (Start: 40 @44237 has 190 MA's), (Start: 66 @44192 has 3 MA's), (70, 44162), (77, 44114), (84, 44072),

Gene: Buttons_62 Start: 39954, Stop: 39661, Start Num: 40

Candidate Starts for Buttons_62:

(27, 39981), (Start: 40 @39954 has 190 MA's), (Start: 66 @39909 has 3 MA's), (70, 39879), (77, 39831), (84, 39789),

Gene: BuzzBuzz_66 Start: 42469, Stop: 42161, Start Num: 37

Candidate Starts for BuzzBuzz_66:

(9, 42676), (Start: 37 @42469 has 1 MA's), (41, 42457), (Start: 43 @42451 has 1 MA's), (50, 42436), (Start: 63 @42415 has 19 MA's), (69, 42382), (77, 42331), (79, 42322), (82, 42295), (84, 42289), (94,

42256),

Gene: Bxb1_59 Start: 41067, Stop: 40774, Start Num: 40

Candidate Starts for Bxb1_59:

(27, 41094), (Start: 40 @41067 has 190 MA's), (Start: 66 @41022 has 3 MA's), (70, 40992), (73, 40980), (77, 40944), (84, 40902),

Gene: Bxz2_67 Start: 42422, Stop: 42168, Start Num: 63

Candidate Starts for Bxz2_67:

(Start: 37 @42476 has 1 MA's), (Start: 43 @42458 has 1 MA's), (50, 42443), (Start: 63 @42422 has 19 MA's), (69, 42389), (77, 42338), (79, 42329), (82, 42302), (84, 42296), (94, 42263),

Gene: C3_67 Start: 43176, Stop: 42916, Start Num: 49

Candidate Starts for C3_67:

(Start: 49 @43176 has 58 MA's), (79, 43071), (84, 43038), (94, 43005), (98, 42984), (107, 42930), (109, 42927),

Gene: CRB1_72 Start: 43596, Stop: 43357, Start Num: 67

Candidate Starts for CRB1_72:

(Start: 45 @43635 has 8 MA's), (Start: 67 @43596 has 64 MA's), (79, 43521), (84, 43488), (94, 43455), (96, 43446), (98, 43434), (109, 43377),

Gene: CactusRose_67 Start: 42855, Stop: 42562, Start Num: 40

Candidate Starts for CactusRose_67:

(27, 42882), (Start: 40 @42855 has 190 MA's), (Start: 66 @42810 has 3 MA's), (70, 42780), (77, 42732), (84, 42690),

Gene: Candra_69 Start: 41351, Stop: 41112, Start Num: 65

Candidate Starts for Candra_69:

(Start: 65 @41351 has 8 MA's), (79, 41276), (84, 41243), (94, 41210), (96, 41201),

Gene: Caraxes_73 Start: 41714, Stop: 41472, Start Num: 66

Candidate Starts for Caraxes_73:

(Start: 66 @41714 has 3 MA's), (80, 41615), (83, 41600), (84, 41597), (85, 41591), (86, 41588), (94, 41564), (98, 41543),

Gene: Carlyle_67 Start: 41641, Stop: 41348, Start Num: 40

Candidate Starts for Carlyle_67:

(Start: 40 @41641 has 190 MA's), (Start: 66 @41596 has 3 MA's), (70, 41566), (77, 41518), (84, 41476),

Gene: Catalina_75 Start: 42695, Stop: 42417, Start Num: 48

Candidate Starts for Catalina_75:

(Start: 48 @42695 has 23 MA's), (78, 42587), (87, 42533), (89, 42524), (98, 42494),

Gene: Centaur_71 Start: 43010, Stop: 42771, Start Num: 67

Candidate Starts for Centaur_71:

(Start: 67 @43010 has 64 MA's), (Start: 72 @42983 has 1 MA's), (73, 42980), (79, 42935), (84, 42902), (94, 42869), (96, 42860), (98, 42848),

Gene: Chadwick_69 Start: 41930, Stop: 41679, Start Num: 57

Candidate Starts for Chadwick_69:

(Start: 57 @41930 has 35 MA's), (79, 41837), (80, 41822), (96, 41759), (102, 41714), (107, 41693),

Gene: Chanagan_59 Start: 40048, Stop: 39755, Start Num: 40

Candidate Starts for Chanagan_59:

(27, 40075), (Start: 40 @40048 has 190 MA's), (Start: 66 @40003 has 3 MA's), (70, 39973), (77, 39925), (84, 39883),

Gene: Changeling_69 Start: 43249, Stop: 43010, Start Num: 68

Candidate Starts for Changeling_69:

(Start: 45 @43291 has 8 MA's), (Start: 67 @43252 has 64 MA's), (Start: 68 @43249 has 1 MA's), (76, 43207), (77, 43183), (79, 43174), (84, 43141), (94, 43108), (96, 43099), (98, 43087),

Gene: Chargerpower_67 Start: 40705, Stop: 40445, Start Num: 54

Candidate Starts for Chargerpower_67:

(Start: 43 @40726 has 1 MA's), (Start: 54 @40705 has 4 MA's), (78, 40612), (87, 40558), (89, 40549), (98, 40519), (105, 40471), (106, 40468), (108, 40465),

Gene: Charm_67 Start: 41703, Stop: 41416, Start Num: 46

Candidate Starts for Charm_67:

(Start: 46 @41703 has 26 MA's), (78, 41598), (84, 41559), (98, 41505),

Gene: Chartreuse_68 Start: 40662, Stop: 40423, Start Num: 65

Candidate Starts for Chartreuse_68:

(Start: 65 @40662 has 8 MA's), (79, 40587), (84, 40554), (94, 40521), (96, 40512),

Gene: Che12_74 Start: 41861, Stop: 41586, Start Num: 49

Candidate Starts for Che12_74:

(1, 42212), (21, 41975), (Start: 49 @41861 has 58 MA's), (Start: 56 @41852 has 1 MA's), (Start: 72 @41792 has 1 MA's), (77, 41753), (84, 41711), (86, 41702), (94, 41678), (98, 41657),

Gene: ChipMunk_72 Start: 44601, Stop: 44362, Start Num: 67

Candidate Starts for ChipMunk_72:

(Start: 67 @44601 has 64 MA's), (79, 44526), (84, 44493), (94, 44460), (96, 44451), (98, 44439),

Gene: Ciao_63 Start: 41412, Stop: 41119, Start Num: 40

Candidate Starts for Ciao_63:

(27, 41439), (Start: 40 @41412 has 190 MA's), (Start: 66 @41367 has 3 MA's), (70, 41337), (77, 41289), (84, 41247),

Gene: CloudWang3_73 Start: 41897, Stop: 41640, Start Num: 49

Candidate Starts for CloudWang3_73:

(Start: 49 @41897 has 58 MA's), (Start: 56 @41888 has 1 MA's), (77, 41813), (79, 41804), (84, 41771), (93, 41741), (96, 41729), (112, 41648),

Gene: Colin_69 Start: 43242, Stop: 42997, Start Num: 62

Candidate Starts for Colin_69:

(Start: 58 @43248 has 1 MA's), (Start: 62 @43242 has 18 MA's), (79, 43161), (84, 43128), (94, 43095), (96, 43086), (98, 43074), (106, 43023),

Gene: ConceptII_70 Start: 44031, Stop: 43738, Start Num: 40

Candidate Starts for ConceptII_70:

(27, 44058), (Start: 40 @44031 has 190 MA's), (Start: 66 @43986 has 3 MA's), (70, 43956), (77, 43908), (84, 43866),

Gene: Conquerage_71 Start: 42370, Stop: 42092, Start Num: 48
Candidate Starts for Conquerage_71:
(Start: 48 @42370 has 23 MA's), (78, 42262), (87, 42208), (89, 42199), (98, 42169),

Gene: Conspiracy_66 Start: 41863, Stop: 41612, Start Num: 57
Candidate Starts for Conspiracy_66:
(Start: 57 @41863 has 35 MA's), (79, 41770), (80, 41755), (96, 41692), (102, 41647), (107, 41626),
(111, 41620),

Gene: Coog_62 Start: 41634, Stop: 41383, Start Num: 57
Candidate Starts for Coog_62:
(Start: 57 @41634 has 35 MA's), (Start: 64 @41622 has 2 MA's), (79, 41541), (80, 41526), (96,
41463), (102, 41418), (107, 41397), (111, 41391),

Gene: Cookiedough_71 Start: 41299, Stop: 41051, Start Num: 62
Candidate Starts for Cookiedough_71:
(10, 41539), (18, 41467), (27, 41386), (Start: 40 @41341 has 190 MA's), (Start: 62 @41299 has 18
MA's), (77, 41224), (84, 41182), (93, 41152), (96, 41140),

Gene: Corvo_66 Start: 43343, Stop: 43050, Start Num: 40
Candidate Starts for Corvo_66:
(27, 43370), (Start: 40 @43343 has 190 MA's), (Start: 66 @43298 has 3 MA's), (70, 43268), (77,
43220), (84, 43178),

Gene: Crispicious1_63 Start: 41754, Stop: 41461, Start Num: 40
Candidate Starts for Crispicious1_63:
(27, 41781), (Start: 40 @41754 has 190 MA's), (Start: 66 @41709 has 3 MA's), (70, 41679), (77,
41631), (84, 41589),

Gene: Crucio_71 Start: 43367, Stop: 43128, Start Num: 67
Candidate Starts for Crucio_71:
(Start: 45 @43406 has 8 MA's), (Start: 67 @43367 has 64 MA's), (79, 43292), (84, 43259), (94,
43226), (96, 43217), (98, 43205), (109, 43148),

Gene: Cuco_64 Start: 41482, Stop: 41243, Start Num: 64
Candidate Starts for Cuco_64:
(Start: 57 @41494 has 35 MA's), (Start: 64 @41482 has 2 MA's), (79, 41401), (80, 41386), (96,
41323), (102, 41278), (107, 41257), (111, 41251),

Gene: Cueyllyss_65 Start: 43690, Stop: 43397, Start Num: 40
Candidate Starts for Cueyllyss_65:
(Start: 40 @43690 has 190 MA's), (Start: 66 @43645 has 3 MA's), (70, 43615), (73, 43603), (77,
43567), (84, 43525),

Gene: D29_68 Start: 43721, Stop: 43488, Start Num: 49
Candidate Starts for D29_68:
(Start: 49 @43721 has 58 MA's), (79, 43643), (84, 43610), (94, 43577), (98, 43556), (107, 43502),

Gene: D32_73 Start: 43721, Stop: 43488, Start Num: 49
Candidate Starts for D32_73:
(Start: 49 @43721 has 58 MA's), (79, 43643), (84, 43610), (94, 43577), (98, 43556), (107, 43502),

Gene: DBQu4n_74 Start: 43701, Stop: 43468, Start Num: 49

Candidate Starts for DBQu4n_74:

(Start: 49 @43701 has 58 MA's), (79, 43623), (84, 43590), (94, 43557), (98, 43536), (107, 43482),

Gene: DD5_66 Start: 43578, Stop: 43285, Start Num: 40

Candidate Starts for DD5_66:

(27, 43605), (Start: 40 @43578 has 190 MA's), (Start: 66 @43533 has 3 MA's), (70, 43503), (77, 43455), (84, 43413),

Gene: DaVinci_69 Start: 40716, Stop: 40477, Start Num: 65

Candidate Starts for DaVinci_69:

(Start: 65 @40716 has 8 MA's), (79, 40641), (84, 40608), (94, 40575), (96, 40566),

Gene: Dalmatian_71 Start: 43225, Stop: 42947, Start Num: 45

Candidate Starts for Dalmatian_71:

(Start: 45 @43225 has 8 MA's), (Start: 67 @43186 has 64 MA's), (79, 43111), (84, 43078), (94, 43045), (96, 43036), (98, 43024), (109, 42967),

Gene: Danforth_81 Start: 44166, Stop: 43882, Start Num: 63

Candidate Starts for Danforth_81:

(Start: 63 @44166 has 19 MA's), (Start: 72 @44124 has 1 MA's), (78, 44082), (79, 44076), (101, 43968),

Gene: DarthPhader_68 Start: 43667, Stop: 43356, Start Num: 36

Candidate Starts for DarthPhader_68:

(13, 43808), (Start: 35 @43670 has 1 MA's), (Start: 36 @43667 has 3 MA's), (Start: 61 @43619 has 1 MA's), (Start: 72 @43568 has 1 MA's), (77, 43529), (79, 43520), (84, 43487), (106, 43382),

Gene: DekHockey33_81 Start: 43657, Stop: 43379, Start Num: 49

Candidate Starts for DekHockey33_81:

(24, 43717), (Start: 49 @43657 has 58 MA's), (74, 43579), (79, 43540), (84, 43507), (93, 43477), (94, 43474), (98, 43453), (103, 43420),

Gene: Deloris_70 Start: 42746, Stop: 42507, Start Num: 67

Candidate Starts for Deloris_70:

(Start: 45 @42785 has 8 MA's), (Start: 67 @42746 has 64 MA's), (Start: 72 @42719 has 1 MA's), (79, 42671), (84, 42638), (94, 42605), (96, 42596), (98, 42584), (109, 42527),

Gene: Dexes_66 Start: 43299, Stop: 43006, Start Num: 40

Candidate Starts for Dexes_66:

(Start: 40 @43299 has 190 MA's), (Start: 66 @43254 has 3 MA's), (77, 43176), (84, 43134),

Gene: Dignity_72 Start: 43408, Stop: 43169, Start Num: 67

Candidate Starts for Dignity_72:

(Start: 45 @43447 has 8 MA's), (Start: 67 @43408 has 64 MA's), (79, 43333), (84, 43300), (94, 43267), (96, 43258), (98, 43246),

Gene: Discoknowium_63 Start: 41380, Stop: 41129, Start Num: 57

Candidate Starts for Discoknowium_63:

(Start: 57 @41380 has 35 MA's), (79, 41287), (80, 41272), (96, 41209), (102, 41164), (107, 41143), (111, 41137),

Gene: Dixon_79 Start: 43648, Stop: 43364, Start Num: 63

Candidate Starts for Dixon_79:

(Start: 63 @43648 has 19 MA's), (Start: 72 @43606 has 1 MA's), (78, 43564), (79, 43558), (101, 43450),

Gene: Doom_63 Start: 42899, Stop: 42606, Start Num: 40

Candidate Starts for Doom_63:

(Start: 40 @42899 has 190 MA's), (Start: 66 @42854 has 3 MA's), (70, 42824), (77, 42776), (84, 42734),

Gene: Dorothea_68 Start: 41297, Stop: 41049, Start Num: 62

Candidate Starts for Dorothea_68:

(10, 41537), (18, 41465), (27, 41384), (Start: 40 @41339 has 190 MA's), (Start: 62 @41297 has 18 MA's), (77, 41222), (84, 41180), (93, 41150), (96, 41138),

Gene: DrFeelGood_64 Start: 41833, Stop: 41540, Start Num: 40

Candidate Starts for DrFeelGood_64:

(27, 41860), (Start: 40 @41833 has 190 MA's), (Start: 66 @41788 has 3 MA's), (70, 41758), (77, 41710), (84, 41668),

Gene: Drake55_72 Start: 43111, Stop: 42872, Start Num: 67

Candidate Starts for Drake55_72:

(Start: 67 @43111 has 64 MA's), (Start: 72 @43084 has 1 MA's), (73, 43081), (79, 43036), (84, 43003), (94, 42970), (96, 42961), (98, 42949),

Gene: DreamCatcher_68 Start: 42983, Stop: 42690, Start Num: 40

Candidate Starts for DreamCatcher_68:

(27, 43010), (Start: 40 @42983 has 190 MA's), (Start: 66 @42938 has 3 MA's), (70, 42908), (77, 42860), (84, 42818),

Gene: DreamTeam1_67 Start: 41535, Stop: 41248, Start Num: 44

Candidate Starts for DreamTeam1_67:

(Start: 44 @41535 has 1 MA's), (77, 41421), (78, 41418), (87, 41364), (89, 41355), (98, 41325),

Gene: Dreamboat_68 Start: 42073, Stop: 41780, Start Num: 40

Candidate Starts for Dreamboat_68:

(27, 42100), (Start: 40 @42073 has 190 MA's), (Start: 66 @42028 has 3 MA's), (70, 41998), (77, 41950), (84, 41908),

Gene: Dublin_65 Start: 41773, Stop: 41522, Start Num: 57

Candidate Starts for Dublin_65:

(Start: 57 @41773 has 35 MA's), (77, 41689), (79, 41680), (80, 41665), (96, 41602), (102, 41557), (107, 41536),

Gene: DudeLittle_69 Start: 42991, Stop: 42713, Start Num: 45

Candidate Starts for DudeLittle_69:

(Start: 45 @42991 has 8 MA's), (Start: 67 @42952 has 64 MA's), (79, 42877), (84, 42844), (94, 42811), (96, 42802), (98, 42790), (109, 42733),

Gene: Dulcie_66 Start: 44308, Stop: 44015, Start Num: 40

Candidate Starts for Dulcie_66:

(Start: 40 @44308 has 190 MA's), (Start: 66 @44263 has 3 MA's), (70, 44233), (77, 44185), (84, 44143),

Gene: Duplo_74 Start: 43758, Stop: 43525, Start Num: 49

Candidate Starts for Duplo_74:

(Start: 49 @43758 has 58 MA's), (79, 43680), (84, 43647), (94, 43614), (98, 43593), (107, 43539),

Gene: Dussy_67 Start: 43292, Stop: 42999, Start Num: 40

Candidate Starts for Dussy_67:

(Start: 40 @43292 has 190 MA's), (Start: 66 @43247 has 3 MA's), (70, 43217), (77, 43169), (84, 43127),

Gene: Dynamix_67 Start: 41907, Stop: 41614, Start Num: 40

Candidate Starts for Dynamix_67:

(27, 41934), (Start: 40 @41907 has 190 MA's), (Start: 66 @41862 has 3 MA's), (70, 41832), (77, 41784), (84, 41742),

Gene: EZMoney23_67 Start: 42794, Stop: 42552, Start Num: 67

Candidate Starts for EZMoney23_67:

(Start: 45 @42833 has 8 MA's), (Start: 67 @42794 has 64 MA's), (Start: 68 @42791 has 1 MA's), (76, 42749), (77, 42725), (79, 42716), (84, 42683), (94, 42650), (96, 42641), (98, 42629),

Gene: EagleEye_76 Start: 43298, Stop: 43038, Start Num: 52

Candidate Starts for EagleEye_76:

(16, 43454), (25, 43364), (31, 43346), (Start: 33 @43340 has 1 MA's), (Start: 52 @43298 has 2 MA's), (83, 43160), (98, 43103),

Gene: Ebony_69 Start: 41606, Stop: 41340, Start Num: 46

Candidate Starts for Ebony_69:

(Start: 46 @41606 has 26 MA's), (78, 41513), (84, 41474), (94, 41441), (96, 41432), (98, 41420), (102, 41387),

Gene: Echild_71 Start: 42731, Stop: 42492, Start Num: 67

Candidate Starts for Echild_71:

(Start: 45 @42770 has 8 MA's), (Start: 67 @42731 has 64 MA's), (77, 42665), (79, 42656), (84, 42623), (94, 42590), (96, 42581), (98, 42569),

Gene: Edtherson_64 Start: 42893, Stop: 42600, Start Num: 40

Candidate Starts for Edtherson_64:

(27, 42920), (Start: 40 @42893 has 190 MA's), (Start: 66 @42848 has 3 MA's), (70, 42818), (77, 42770), (84, 42728),

Gene: Eidsmoe_71 Start: 42362, Stop: 42084, Start Num: 48

Candidate Starts for Eidsmoe_71:

(Start: 48 @42362 has 23 MA's), (78, 42254), (87, 42200), (89, 42191), (98, 42161),

Gene: EITiger69_71 Start: 42857, Stop: 42603, Start Num: 57

Candidate Starts for EITiger69_71:

(Start: 57 @42857 has 35 MA's), (79, 42764), (80, 42749), (96, 42686), (102, 42641), (107, 42620), (111, 42614),

Gene: Elephantoon_73 Start: 42479, Stop: 42192, Start Num: 48

Candidate Starts for Elephantoon_73:

(Start: 48 @42479 has 23 MA's), (51, 42473), (Start: 72 @42413 has 1 MA's), (78, 42371), (84, 42332), (98, 42278),

Gene: EmyBug_67 Start: 42364, Stop: 42086, Start Num: 48

Candidate Starts for EmyBug_67:

(Start: 48 @42364 has 23 MA's), (78, 42256), (87, 42202), (89, 42193), (98, 42163),

Gene: Epsocamisio_76 Start: 42795, Stop: 42517, Start Num: 49

Candidate Starts for Epsocamisio_76:

(Start: 49 @42795 has 58 MA's), (74, 42717), (79, 42678), (84, 42645), (93, 42615), (94, 42612), (98, 42591), (103, 42558),

Gene: Equemioh13_70 Start: 42915, Stop: 42676, Start Num: 67

Candidate Starts for Equemioh13_70:

(Start: 67 @42915 has 64 MA's), (Start: 72 @42888 has 1 MA's), (73, 42885), (79, 42840), (84, 42807), (94, 42774), (96, 42765), (98, 42753),

Gene: EricB_70 Start: 41308, Stop: 41069, Start Num: 65

Candidate Starts for EricB_70:

(Start: 65 @41308 has 8 MA's), (79, 41233), (84, 41200), (94, 41167), (96, 41158),

Gene: Espresso_62 Start: 42517, Stop: 42224, Start Num: 40

Candidate Starts for Espresso_62:

(Start: 40 @42517 has 190 MA's), (Start: 66 @42472 has 3 MA's), (70, 42442), (73, 42430), (77, 42394), (84, 42352),

Gene: Et2Brutus_68 Start: 41569, Stop: 41303, Start Num: 46

Candidate Starts for Et2Brutus_68:

(Start: 46 @41569 has 26 MA's), (78, 41476), (84, 41437), (94, 41404), (96, 41395), (98, 41383), (102, 41350),

Gene: Euphoria_65 Start: 42359, Stop: 42066, Start Num: 40

Candidate Starts for Euphoria_65:

(27, 42386), (Start: 40 @42359 has 190 MA's), (Start: 66 @42314 has 3 MA's), (70, 42284), (77, 42236), (84, 42194),

Gene: EvilGenius_71 Start: 44602, Stop: 44363, Start Num: 67

Candidate Starts for EvilGenius_71:

(Start: 67 @44602 has 64 MA's), (79, 44527), (84, 44494), (94, 44461), (96, 44452), (98, 44440),

Gene: Expelliarmus_77 Start: 43862, Stop: 43578, Start Num: 63

Candidate Starts for Expelliarmus_77:

(Start: 63 @43862 has 19 MA's), (Start: 72 @43820 has 1 MA's), (78, 43778), (79, 43772), (101, 43664),

Gene: ExplosioNervosa_71 Start: 42430, Stop: 42152, Start Num: 48

Candidate Starts for ExplosioNervosa_71:

(Start: 48 @42430 has 23 MA's), (78, 42322), (87, 42268), (89, 42259), (98, 42229),

Gene: Eyeball_67 Start: 43398, Stop: 43105, Start Num: 40

Candidate Starts for Eyeball_67:

(30, 43434), (Start: 40 @43398 has 190 MA's), (Start: 66 @43353 has 3 MA's), (70, 43323), (77, 43275), (84, 43233),

Gene: Fajezeel_66 Start: 42114, Stop: 41821, Start Num: 40

Candidate Starts for Fajezeel_66:

(27, 42141), (Start: 40 @42114 has 190 MA's), (Start: 66 @42069 has 3 MA's), (70, 42039), (77, 41991), (84, 41949),

Gene: Fameo_70 Start: 43185, Stop: 42946, Start Num: 67

Candidate Starts for Fameo_70:

(Start: 45 @43224 has 8 MA's), (Start: 67 @43185 has 64 MA's), (77, 43119), (79, 43110), (84, 43077), (94, 43044), (96, 43035), (98, 43023), (110, 42963),

Gene: Fascinus_61 Start: 42349, Stop: 42056, Start Num: 40

Candidate Starts for Fascinus_61:

(27, 42376), (Start: 40 @42349 has 190 MA's), (Start: 66 @42304 has 3 MA's), (70, 42274), (73, 42262), (77, 42226), (84, 42184),

Gene: Fayely_71 Start: 42331, Stop: 42053, Start Num: 48

Candidate Starts for Fayely_71:

(Start: 48 @42331 has 23 MA's), (78, 42223), (87, 42169), (89, 42160), (98, 42130),

Gene: Fenn_72 Start: 44750, Stop: 44457, Start Num: 40

Candidate Starts for Fenn_72:

(27, 44795), (32, 44777), (Start: 40 @44750 has 190 MA's), (Start: 66 @44705 has 3 MA's), (70, 44675), (77, 44627), (84, 44585),

Gene: Fibonacci_69 Start: 41575, Stop: 41309, Start Num: 46

Candidate Starts for Fibonacci_69:

(Start: 46 @41575 has 26 MA's), (78, 41482), (84, 41443), (94, 41410), (96, 41401), (98, 41389), (102, 41356),

Gene: FiringLine_71 Start: 43349, Stop: 43110, Start Num: 67

Candidate Starts for FiringLine_71:

(Start: 45 @43388 has 8 MA's), (Start: 67 @43349 has 64 MA's), (79, 43274), (84, 43241), (94, 43208), (96, 43199), (98, 43187), (109, 43130),

Gene: First_0071 Start: 42973, Stop: 42734, Start Num: 67

Candidate Starts for First_0071:

(Start: 45 @43012 has 8 MA's), (Start: 67 @42973 has 64 MA's), (79, 42898), (84, 42865), (94, 42832), (96, 42823), (98, 42811), (109, 42754),

Gene: Flare16_71 Start: 43054, Stop: 42815, Start Num: 67

Candidate Starts for Flare16_71:

(Start: 45 @43093 has 8 MA's), (Start: 67 @43054 has 64 MA's), (Start: 72 @43027 has 1 MA's), (73, 43024), (79, 42979), (84, 42946), (94, 42913), (96, 42904), (98, 42892), (109, 42835),

Gene: Flaverint_70 Start: 42033, Stop: 41767, Start Num: 46

Candidate Starts for Flaverint_70:

(Start: 46 @42033 has 26 MA's), (78, 41940), (84, 41901), (94, 41868), (96, 41859), (98, 41847), (102, 41814),

Gene: ForGetIt_66 Start: 41888, Stop: 41637, Start Num: 57

Candidate Starts for ForGetIt_66:

(Start: 57 @41888 has 35 MA's), (79, 41795), (80, 41780), (96, 41717), (102, 41672), (107, 41651), (111, 41645),

Gene: Forsytheast_67 Start: 42412, Stop: 42119, Start Num: 40

Candidate Starts for Forsytheast_67:

(27, 42439), (Start: 40 @42412 has 190 MA's), (Start: 66 @42367 has 3 MA's), (70, 42337), (77, 42289), (84, 42247),

Gene: Francis47_65 Start: 43491, Stop: 43198, Start Num: 40

Candidate Starts for Francis47_65:

(Start: 40 @43491 has 190 MA's), (Start: 66 @43446 has 3 MA's), (70, 43416), (77, 43368), (84, 43326),

Gene: Froghopper_63 Start: 41471, Stop: 41178, Start Num: 40

Candidate Starts for Froghopper_63:

(27, 41498), (Start: 40 @41471 has 190 MA's), (Start: 66 @41426 has 3 MA's), (70, 41396), (77, 41348), (84, 41306),

Gene: Fushigi_61 Start: 40434, Stop: 40141, Start Num: 40

Candidate Starts for Fushigi_61:

(27, 40461), (Start: 40 @40434 has 190 MA's), (Start: 66 @40389 has 3 MA's), (70, 40359), (77, 40311), (84, 40269),

Gene: GageAP_67 Start: 43435, Stop: 43142, Start Num: 40

Candidate Starts for GageAP_67:

(2, 43693), (6, 43657), (27, 43462), (Start: 40 @43435 has 190 MA's), (Start: 66 @43390 has 3 MA's), (70, 43360), (73, 43348), (77, 43312), (84, 43270),

Gene: Gail_72 Start: 43458, Stop: 43192, Start Num: 56

Candidate Starts for Gail_72:

(Start: 43 @43482 has 1 MA's), (Start: 54 @43461 has 4 MA's), (Start: 56 @43458 has 1 MA's), (78, 43362), (83, 43326), (84, 43323), (96, 43281), (98, 43269), (106, 43218),

Gene: Gandalf20_68 Start: 43802, Stop: 43509, Start Num: 40

Candidate Starts for Gandalf20_68:

(Start: 40 @43802 has 190 MA's), (Start: 66 @43757 has 3 MA's), (70, 43727), (73, 43715), (77, 43679), (84, 43637),

Gene: Garak_74 Start: 41848, Stop: 41591, Start Num: 49

Candidate Starts for Garak_74:

(Start: 49 @41848 has 58 MA's), (Start: 56 @41839 has 1 MA's), (77, 41764), (79, 41755), (84, 41722), (93, 41692), (96, 41680),

Gene: GaugeLDP_66 Start: 42652, Stop: 42401, Start Num: 49

Candidate Starts for GaugeLDP_66:

(Start: 49 @42652 has 58 MA's), (Start: 56 @42643 has 1 MA's), (73, 42610), (79, 42565), (84, 42532), (94, 42499), (96, 42490), (98, 42478),

Gene: George_62 Start: 41560, Stop: 41309, Start Num: 57

Candidate Starts for George_62:

(Start: 57 @41560 has 35 MA's), (79, 41467), (80, 41452), (96, 41389), (102, 41344), (107, 41323),

Gene: Georgie2_72 Start: 43394, Stop: 43155, Start Num: 67

Candidate Starts for Georgie2_72:

(Start: 45 @43433 has 8 MA's), (Start: 67 @43394 has 64 MA's), (79, 43319), (84, 43286), (94, 43253), (96, 43244), (98, 43232), (109, 43175),

Gene: Ghoulboy_65 Start: 41861, Stop: 41610, Start Num: 57

Candidate Starts for Ghoulboy_65:

(Start: 57 @41861 has 35 MA's), (Start: 64 @41849 has 2 MA's), (77, 41777), (79, 41768), (80, 41753), (96, 41690), (102, 41645), (107, 41624), (111, 41618),

Gene: Gilberta_70 Start: 42026, Stop: 41760, Start Num: 46

Candidate Starts for Gilberta_70:

(Start: 46 @42026 has 26 MA's), (78, 41933), (84, 41894), (94, 41861), (96, 41852), (98, 41840), (102, 41807),

Gene: Gladiator_69 Start: 40925, Stop: 40677, Start Num: 62

Candidate Starts for Gladiator_69:

(10, 41165), (18, 41093), (27, 41012), (Start: 40 @40967 has 190 MA's), (Start: 62 @40925 has 18 MA's), (77, 40850), (84, 40808), (93, 40778), (96, 40766),

Gene: Gompeii16_66 Start: 44565, Stop: 44272, Start Num: 40

Candidate Starts for Gompeii16_66:

(Start: 40 @44565 has 190 MA's), (Start: 66 @44520 has 3 MA's), (70, 44490), (77, 44442), (84, 44400),

Gene: Graduation_71 Start: 44181, Stop: 43888, Start Num: 40

Candidate Starts for Graduation_71:

(27, 44208), (Start: 40 @44181 has 190 MA's), (Start: 66 @44136 has 3 MA's), (70, 44106), (73, 44094), (77, 44058), (84, 44016),

Gene: GrecoEtereo_65 Start: 41688, Stop: 41395, Start Num: 40

Candidate Starts for GrecoEtereo_65:

(27, 41715), (Start: 40 @41688 has 190 MA's), (Start: 66 @41643 has 3 MA's), (70, 41613), (77, 41565), (84, 41523),

Gene: GreedyLawyer_68 Start: 41281, Stop: 41042, Start Num: 65

Candidate Starts for GreedyLawyer_68:

(Start: 65 @41281 has 8 MA's), (79, 41206), (84, 41173), (94, 41140), (96, 41131),

Gene: Greg_66 Start: 42114, Stop: 41821, Start Num: 40

Candidate Starts for Greg_66:

(27, 42141), (Start: 40 @42114 has 190 MA's), (Start: 66 @42069 has 3 MA's), (70, 42039), (77, 41991), (84, 41949),

Gene: Grif_70 Start: 42462, Stop: 42208, Start Num: 63

Candidate Starts for Grif_70:

(Start: 43 @42498 has 1 MA's), (50, 42483), (Start: 63 @42462 has 19 MA's), (69, 42429), (77, 42378), (79, 42369), (82, 42342), (84, 42336), (94, 42303),

Gene: Groundhog_78 Start: 43876, Stop: 43634, Start Num: 72

Candidate Starts for Groundhog_78:

(Start: 63 @43918 has 19 MA's), (Start: 72 @43876 has 1 MA's), (78, 43834), (79, 43828), (101, 43720),

Gene: Gruunaga_72 Start: 41706, Stop: 41449, Start Num: 49

Candidate Starts for Gruunaga_72:

(Start: 49 @41706 has 58 MA's), (Start: 56 @41697 has 1 MA's), (77, 41622), (79, 41613), (84, 41580), (93, 41550), (96, 41538), (112, 41457),

Gene: GtownJaz_72 Start: 42389, Stop: 42135, Start Num: 63

Candidate Starts for GtownJaz_72:

(Start: 43 @42425 has 1 MA's), (50, 42410), (Start: 63 @42389 has 19 MA's), (69, 42356), (77, 42305), (79, 42296), (82, 42269), (84, 42263), (94, 42230),

Gene: Gwendoluna_70 Start: 44629, Stop: 44336, Start Num: 40

Candidate Starts for Gwendoluna_70:

(27, 44656), (Start: 40 @44629 has 190 MA's), (Start: 66 @44584 has 3 MA's), (70, 44554), (77, 44506), (84, 44464),

Gene: Gyzlar_61 Start: 40384, Stop: 40091, Start Num: 40

Candidate Starts for Gyzlar_61:

(27, 40411), (Start: 40 @40384 has 190 MA's), (Start: 66 @40339 has 3 MA's), (77, 40261), (84, 40219),

Gene: HINdeR_66 Start: 44898, Stop: 44536, Start Num: 22

Candidate Starts for HINdeR_66:

(Start: 22 @44898 has 1 MA's), (29, 44865), (Start: 42 @44826 has 1 MA's), (Start: 72 @44745 has 1 MA's), (77, 44706), (79, 44697), (88, 44649), (92, 44634), (94, 44631), (98, 44610), (106, 44559), (113, 44541),

Gene: Hammer_73 Start: 41413, Stop: 41156, Start Num: 49

Candidate Starts for Hammer_73:

(Start: 49 @41413 has 58 MA's), (Start: 56 @41404 has 1 MA's), (77, 41329), (79, 41320), (84, 41287), (93, 41257), (96, 41245),

Gene: HanShotFirst_67 Start: 44227, Stop: 43934, Start Num: 40

Candidate Starts for HanShotFirst_67:

(27, 44254), (Start: 40 @44227 has 190 MA's), (Start: 66 @44182 has 3 MA's), (70, 44152), (77, 44104), (84, 44062),

Gene: HarryHoudini_71 Start: 43112, Stop: 42873, Start Num: 67

Candidate Starts for HarryHoudini_71:

(Start: 67 @43112 has 64 MA's), (Start: 72 @43085 has 1 MA's), (73, 43082), (79, 43037), (84, 43004), (94, 42971), (96, 42962), (98, 42950),

Gene: HarryOW_63 Start: 42195, Stop: 41902, Start Num: 40

Candidate Starts for HarryOW_63:

(27, 42222), (Start: 40 @42195 has 190 MA's), (70, 42120), (77, 42072), (84, 42030),

Gene: HashRod_73 Start: 42415, Stop: 42161, Start Num: 63

Candidate Starts for HashRod_73:

(Start: 37 @42469 has 1 MA's), (Start: 43 @42451 has 1 MA's), (50, 42436), (Start: 63 @42415 has 19 MA's), (69, 42382), (77, 42331), (79, 42322), (82, 42295), (84, 42289), (94, 42256),

Gene: Heffalump_69 Start: 43653, Stop: 43414, Start Num: 67

Candidate Starts for Heffalump_69:

(Start: 67 @43653 has 64 MA's), (77, 43587), (79, 43578), (84, 43545), (94, 43512), (96, 43503), (98, 43491), (110, 43431),

Gene: Helmet_74 Start: 41848, Stop: 41591, Start Num: 49

Candidate Starts for Helmet_74:

(Start: 49 @41848 has 58 MA's), (Start: 56 @41839 has 1 MA's), (77, 41764), (79, 41755), (84, 41722), (93, 41692), (96, 41680),

Gene: Herbertwm_67 Start: 42568, Stop: 42287, Start Num: 45

Candidate Starts for Herbertwm_67:

(Start: 45 @42568 has 8 MA's), (Start: 67 @42529 has 64 MA's), (Start: 72 @42496 has 1 MA's), (77, 42457), (87, 42400), (93, 42385), (113, 42292),

Gene: Hermia_61 Start: 42193, Stop: 41900, Start Num: 40

Candidate Starts for Hermia_61:

(27, 42220), (Start: 40 @42193 has 190 MA's), (70, 42118), (77, 42070), (84, 42028),

Gene: HermioneGrange_68 Start: 43698, Stop: 43405, Start Num: 40

Candidate Starts for HermioneGrange_68:

(5, 43926), (27, 43725), (Start: 40 @43698 has 190 MA's), (Start: 66 @43653 has 3 MA's), (70, 43623), (77, 43575), (84, 43533),

Gene: Hexamo_72 Start: 41382, Stop: 41125, Start Num: 49

Candidate Starts for Hexamo_72:

(Start: 49 @41382 has 58 MA's), (Start: 56 @41373 has 1 MA's), (77, 41298), (79, 41289), (84, 41256), (93, 41226), (96, 41214), (112, 41133),

Gene: Homines_57 Start: 38523, Stop: 38230, Start Num: 40

Candidate Starts for Homines_57:

(27, 38550), (Start: 40 @38523 has 190 MA's), (Start: 66 @38478 has 3 MA's), (70, 38448), (77, 38400), (84, 38358),

Gene: Hoot_66 Start: 39166, Stop: 38927, Start Num: 65

Candidate Starts for Hoot_66:

(Start: 65 @39166 has 8 MA's), (79, 39091), (84, 39058), (94, 39025), (96, 39016),

Gene: Hope4ever_67 Start: 42682, Stop: 42389, Start Num: 40

Candidate Starts for Hope4ever_67:

(27, 42709), (Start: 40 @42682 has 190 MA's), (Start: 66 @42637 has 3 MA's), (70, 42607), (77, 42559), (84, 42517),

Gene: HortumSL17_74 Start: 42693, Stop: 42415, Start Num: 48

Candidate Starts for HortumSL17_74:

(Start: 48 @42693 has 23 MA's), (78, 42585), (87, 42531), (89, 42522), (98, 42492),

Gene: HuhtaEnerson15_63 Start: 41469, Stop: 41218, Start Num: 57

Candidate Starts for HuhtaEnerson15_63:

(Start: 57 @41469 has 35 MA's), (79, 41376), (80, 41361), (96, 41298), (102, 41253), (107, 41232),

Gene: Hutc2_68 Start: 41575, Stop: 41309, Start Num: 46

Candidate Starts for Hutc2_68:

(Start: 46 @41575 has 26 MA's), (78, 41482), (84, 41443), (94, 41410), (96, 41401), (98, 41389), (102, 41356),

Gene: ILeeKay_68 Start: 42579, Stop: 42286, Start Num: 40

Candidate Starts for ILeeKay_68:

(Start: 40 @42579 has 190 MA's), (Start: 66 @42534 has 3 MA's), (70, 42504), (77, 42456), (84, 42414),

Gene: Ichabod_70 Start: 43792, Stop: 43499, Start Num: 40

Candidate Starts for Ichabod_70:

(27, 43819), (Start: 40 @43792 has 190 MA's), (Start: 66 @43747 has 3 MA's), (70, 43717), (77, 43669), (84, 43627),

Gene: IgnatiusPatJac_66 Start: 42364, Stop: 42071, Start Num: 40

Candidate Starts for IgnatiusPatJac_66:

(27, 42391), (Start: 40 @42364 has 190 MA's), (Start: 66 @42319 has 3 MA's), (70, 42289), (77, 42241), (84, 42199),

Gene: Indra_76 Start: 41849, Stop: 41592, Start Num: 49

Candidate Starts for Indra_76:

(Start: 49 @41849 has 58 MA's), (Start: 56 @41840 has 1 MA's), (77, 41765), (79, 41756), (84, 41723), (93, 41693), (96, 41681),

Gene: IronMan_68 Start: 43620, Stop: 43360, Start Num: 62

Candidate Starts for IronMan_68:

(18, 43788), (27, 43707), (Start: 62 @43620 has 18 MA's), (79, 43524), (84, 43491), (94, 43458), (96, 43449), (98, 43437),

Gene: Isiphiwo_69 Start: 40857, Stop: 40609, Start Num: 62

Candidate Starts for Isiphiwo_69:

(10, 41097), (18, 41025), (27, 40944), (Start: 40 @40899 has 190 MA's), (Start: 62 @40857 has 18 MA's), (77, 40782), (84, 40740), (93, 40710), (96, 40698),

Gene: JC27_70 Start: 43426, Stop: 43133, Start Num: 40

Candidate Starts for JC27_70:

(27, 43453), (Start: 40 @43426 has 190 MA's), (Start: 66 @43381 has 3 MA's), (70, 43351), (77, 43303), (84, 43261),

Gene: JSwag_79 Start: 43080, Stop: 42802, Start Num: 49

Candidate Starts for JSwag_79:

(Start: 49 @43080 has 58 MA's), (74, 43002), (79, 42963), (84, 42930), (93, 42900), (94, 42897), (98, 42876), (103, 42843),

Gene: Jaan_69 Start: 43788, Stop: 43528, Start Num: 62

Candidate Starts for Jaan_69:

(18, 43956), (27, 43875), (Start: 62 @43788 has 18 MA's), (79, 43692), (84, 43659), (94, 43626), (96, 43617), (98, 43605),

Gene: Jabiru_67 Start: 42041, Stop: 41787, Start Num: 57

Candidate Starts for Jabiru_67:

(Start: 57 @42041 has 35 MA's), (79, 41948), (80, 41933), (96, 41870), (102, 41825), (107, 41804), (111, 41798),

Gene: Jabith_70 Start: 42031, Stop: 41765, Start Num: 46

Candidate Starts for Jabith_70:

(3, 42307), (11, 42223), (12, 42211), (Start: 46 @42031 has 26 MA's), (78, 41938), (84, 41899), (94, 41866), (96, 41857), (98, 41845), (102, 41812),

Gene: JackSparrow_69 Start: 42909, Stop: 42616, Start Num: 40

Candidate Starts for JackSparrow_69:

(27, 42936), (Start: 40 @42909 has 190 MA's), (Start: 66 @42864 has 3 MA's), (70, 42834), (77, 42786), (84, 42744),

Gene: Jasper_67 Start: 41959, Stop: 41666, Start Num: 40

Candidate Starts for Jasper_67:

(27, 41986), (Start: 40 @41959 has 190 MA's), (Start: 66 @41914 has 3 MA's), (70, 41884), (77, 41836), (84, 41794),

Gene: Jeeves_74 Start: 42446, Stop: 42174, Start Num: 54

Candidate Starts for Jeeves_74:

(Start: 43 @42467 has 1 MA's), (Start: 54 @42446 has 4 MA's), (60, 42437), (77, 42347), (78, 42344), (83, 42308), (84, 42305), (96, 42263), (98, 42251), (106, 42200),

Gene: Jeffabunny_73 Start: 41475, Stop: 41218, Start Num: 49

Candidate Starts for Jeffabunny_73:

(Start: 49 @41475 has 58 MA's), (Start: 56 @41466 has 1 MA's), (77, 41391), (79, 41382), (84, 41349), (93, 41319), (96, 41307),

Gene: Jerm_72 Start: 43390, Stop: 43151, Start Num: 67

Candidate Starts for Jerm_72:

(Start: 45 @43429 has 8 MA's), (Start: 67 @43390 has 64 MA's), (79, 43315), (84, 43282), (94, 43249), (96, 43240), (98, 43228),

Gene: Jerm2_67 Start: 43768, Stop: 43475, Start Num: 40

Candidate Starts for Jerm2_67:

(27, 43795), (Start: 40 @43768 has 190 MA's), (Start: 66 @43723 has 3 MA's), (70, 43693), (77, 43645), (84, 43603),

Gene: JewelBug_71 Start: 41591, Stop: 41343, Start Num: 62

Candidate Starts for JewelBug_71:

(10, 41831), (18, 41759), (27, 41678), (Start: 40 @41633 has 190 MA's), (Start: 62 @41591 has 18 MA's), (77, 41516), (84, 41474), (93, 41444), (96, 41432),

Gene: Jordennis_70 Start: 41072, Stop: 40824, Start Num: 62

Candidate Starts for Jordennis_70:

(10, 41312), (18, 41240), (27, 41159), (Start: 40 @41114 has 190 MA's), (Start: 62 @41072 has 18 MA's), (77, 40997), (84, 40955), (93, 40925), (96, 40913),

Gene: Jorgensen_71 Start: 43337, Stop: 43044, Start Num: 40

Candidate Starts for Jorgensen_71:

(27, 43364), (Start: 40 @43337 has 190 MA's), (Start: 66 @43292 has 3 MA's), (70, 43262), (73, 43250), (77, 43214), (84, 43172),

Gene: JoshKayV_71 Start: 43441, Stop: 43202, Start Num: 67

Candidate Starts for JoshKayV_71:

(Start: 45 @43480 has 8 MA's), (Start: 67 @43441 has 64 MA's), (79, 43366), (84, 43333), (94, 43300), (96, 43291), (98, 43279),

Gene: Journey13_62 Start: 40039, Stop: 39803, Start Num: 67

Candidate Starts for Journey13_62:

(39, 40096), (Start: 49 @40072 has 58 MA's), (Start: 67 @40039 has 64 MA's), (77, 39976), (79, 39967), (84, 39934), (94, 39901), (96, 39892), (98, 39880), (112, 39811),

Gene: Jovo_66 Start: 42144, Stop: 41893, Start Num: 57
Candidate Starts for Jovo_66:
(Start: 57 @42144 has 35 MA's), (79, 42051), (80, 42036), (96, 41973), (102, 41928), (107, 41907),
(111, 41901),

Gene: Jsquared_74 Start: 42531, Stop: 42292, Start Num: 67
Candidate Starts for Jsquared_74:
(Start: 67 @42531 has 64 MA's), (76, 42489), (79, 42456), (84, 42423), (94, 42390), (96, 42381), (98,
42369), (106, 42318), (112, 42300),

Gene: JuliaChild_67 Start: 43013, Stop: 42720, Start Num: 40
Candidate Starts for JuliaChild_67:
(27, 43040), (Start: 40 @43013 has 190 MA's), (Start: 66 @42968 has 3 MA's), (70, 42938), (77,
42890), (84, 42848),

Gene: KBG_67 Start: 44545, Stop: 44252, Start Num: 40
Candidate Starts for KBG_67:
(Start: 40 @44545 has 190 MA's), (Start: 66 @44500 has 3 MA's), (70, 44470), (77, 44422), (84,
44380),

Gene: KSSJEB_65 Start: 41821, Stop: 41528, Start Num: 40
Candidate Starts for KSSJEB_65:
(Start: 40 @41821 has 190 MA's), (Start: 66 @41776 has 3 MA's), (70, 41746), (77, 41698), (84,
41656),

Gene: Kalpine_70 Start: 43417, Stop: 43178, Start Num: 67
Candidate Starts for Kalpine_70:
(Start: 45 @43456 has 8 MA's), (Start: 67 @43417 has 64 MA's), (79, 43342), (84, 43309), (94,
43276), (96, 43267), (98, 43255), (106, 43204),

Gene: Kanely_67 Start: 42580, Stop: 42287, Start Num: 40
Candidate Starts for Kanely_67:
(27, 42607), (Start: 40 @42580 has 190 MA's), (Start: 66 @42535 has 3 MA's), (70, 42505), (73,
42493), (77, 42457), (84, 42415),

Gene: KatherineG_80 Start: 43544, Stop: 43266, Start Num: 49
Candidate Starts for KatherineG_80:
(24, 43604), (Start: 49 @43544 has 58 MA's), (74, 43466), (79, 43427), (84, 43394), (93, 43364), (94,
43361), (98, 43340), (103, 43307),

Gene: Kazan_72 Start: 41321, Stop: 41082, Start Num: 65
Candidate Starts for Kazan_72:
(Start: 65 @41321 has 8 MA's), (79, 41246), (84, 41213), (94, 41180), (96, 41171),

Gene: Kenmech_70 Start: 44418, Stop: 44125, Start Num: 40
Candidate Starts for Kenmech_70:
(Start: 40 @44418 has 190 MA's), (Start: 66 @44373 has 3 MA's), (70, 44343), (77, 44295), (84,
44253),

Gene: Kerberos_74 Start: 43720, Stop: 43487, Start Num: 49
Candidate Starts for Kerberos_74:
(Start: 49 @43720 has 58 MA's), (79, 43642), (84, 43609), (94, 43576), (98, 43555), (107, 43501),

Gene: Keziacharles14_69 Start: 43094, Stop: 42822, Start Num: 48
Candidate Starts for Keziacharles14_69:
(Start: 48 @43094 has 23 MA's), (78, 42989), (84, 42950), (87, 42935), (93, 42920), (98, 42896),

Gene: Killigrew_64 Start: 42625, Stop: 42332, Start Num: 40
Candidate Starts for Killigrew_64:
(27, 42652), (Start: 40 @42625 has 190 MA's), (Start: 66 @42580 has 3 MA's), (70, 42550), (77, 42502), (84, 42460),

Gene: KingCyrus_71 Start: 44597, Stop: 44358, Start Num: 67
Candidate Starts for KingCyrus_71:
(Start: 67 @44597 has 64 MA's), (79, 44522), (84, 44489), (94, 44456), (96, 44447), (98, 44435),

Gene: Kipper29_71 Start: 41334, Stop: 41095, Start Num: 65
Candidate Starts for Kipper29_71:
(Start: 65 @41334 has 8 MA's), (79, 41259), (84, 41226), (94, 41193), (96, 41184),

Gene: Koko_74 Start: 42237, Stop: 41980, Start Num: 49
Candidate Starts for Koko_74:
(Start: 49 @42237 has 58 MA's), (Start: 56 @42228 has 1 MA's), (77, 42153), (79, 42144), (84, 42111), (93, 42081), (96, 42069), (112, 41988),

Gene: Kugel_70 Start: 44438, Stop: 44145, Start Num: 40
Candidate Starts for Kugel_70:
(27, 44465), (Start: 40 @44438 has 190 MA's), (Start: 66 @44393 has 3 MA's), (70, 44363), (77, 44315), (84, 44273),

Gene: KyMonks1A_70 Start: 42786, Stop: 42493, Start Num: 40
Candidate Starts for KyMonks1A_70:
(27, 42813), (Start: 40 @42786 has 190 MA's), (Start: 66 @42741 has 3 MA's), (77, 42663), (84, 42621),

Gene: Kykar_67 Start: 43161, Stop: 42868, Start Num: 40
Candidate Starts for Kykar_67:
(2, 43419), (6, 43383), (27, 43188), (Start: 40 @43161 has 190 MA's), (Start: 66 @43116 has 3 MA's), (70, 43086), (77, 43038), (84, 42996),

Gene: L5_68 Start: 42580, Stop: 42341, Start Num: 67
Candidate Starts for L5_68:
(Start: 67 @42580 has 64 MA's), (79, 42505), (84, 42472), (94, 42439), (96, 42430), (98, 42418), (106, 42367), (112, 42349),

Gene: LadyBird_74 Start: 43662, Stop: 43423, Start Num: 67
Candidate Starts for LadyBird_74:
(Start: 45 @43701 has 8 MA's), (Start: 67 @43662 has 64 MA's), (79, 43587), (84, 43554), (94, 43521), (96, 43512), (98, 43500), (109, 43443),

Gene: Lamina13_69 Start: 43778, Stop: 43485, Start Num: 40
Candidate Starts for Lamina13_69:
(Start: 40 @43778 has 190 MA's), (Start: 66 @43733 has 3 MA's), (70, 43703), (77, 43655), (84, 43613),

Gene: Landor_69 Start: 43695, Stop: 43435, Start Num: 62

Candidate Starts for Landor_69:

(Start: 62 @43695 has 18 MA's), (79, 43599), (84, 43566), (94, 43533), (96, 43524), (98, 43512),

Gene: Larenn_68 Start: 42943, Stop: 42704, Start Num: 67

Candidate Starts for Larenn_68:

(Start: 67 @42943 has 64 MA's), (79, 42868), (84, 42835), (87, 42820), (94, 42802), (96, 42793), (98, 42781), (109, 42724),

Gene: LarryKay_72 Start: 42417, Stop: 42163, Start Num: 63

Candidate Starts for LarryKay_72:

(Start: 43 @42453 has 1 MA's), (50, 42438), (Start: 63 @42417 has 19 MA's), (69, 42384), (77, 42333), (79, 42324), (82, 42297), (84, 42291), (94, 42258),

Gene: LastResort_78 Start: 43475, Stop: 43197, Start Num: 49

Candidate Starts for LastResort_78:

(24, 43535), (Start: 49 @43475 has 58 MA's), (74, 43397), (79, 43358), (84, 43325), (93, 43295), (94, 43292), (98, 43271), (103, 43238),

Gene: Leogania_70 Start: 43630, Stop: 43391, Start Num: 67

Candidate Starts for Leogania_70:

(Start: 45 @43669 has 8 MA's), (Start: 67 @43630 has 64 MA's), (79, 43555), (84, 43522), (94, 43489), (96, 43480), (98, 43468),

Gene: Lesedi_62 Start: 40853, Stop: 40560, Start Num: 40

Candidate Starts for Lesedi_62:

(Start: 40 @40853 has 190 MA's), (Start: 66 @40808 has 3 MA's), (70, 40778), (77, 40730), (84, 40688),

Gene: Lev2_66 Start: 41776, Stop: 41525, Start Num: 57

Candidate Starts for Lev2_66:

(Start: 57 @41776 has 35 MA's), (79, 41683), (80, 41668), (96, 41605), (102, 41560), (107, 41539), (111, 41533),

Gene: Leviathan_72 Start: 43457, Stop: 43218, Start Num: 67

Candidate Starts for Leviathan_72:

(Start: 45 @43496 has 8 MA's), (Start: 67 @43457 has 64 MA's), (79, 43382), (84, 43349), (94, 43316), (96, 43307), (98, 43295),

Gene: Licorice_66 Start: 43887, Stop: 43594, Start Num: 40

Candidate Starts for Licorice_66:

(27, 43914), (Start: 40 @43887 has 190 MA's), (Start: 66 @43842 has 3 MA's), (70, 43812), (77, 43764), (84, 43722),

Gene: LilBib_65 Start: 43871, Stop: 43578, Start Num: 40

Candidate Starts for LilBib_65:

(Start: 40 @43871 has 190 MA's), (Start: 66 @43826 has 3 MA's), (70, 43796), (77, 43748), (84, 43706),

Gene: LilTurb_71 Start: 43271, Stop: 43032, Start Num: 67

Candidate Starts for LilTurb_71:

(Start: 45 @43310 has 8 MA's), (Start: 67 @43271 has 64 MA's), (79, 43196), (84, 43163), (94, 43130), (96, 43121), (98, 43109),

Gene: LittleCherry_64 Start: 41339, Stop: 41088, Start Num: 57
Candidate Starts for LittleCherry_64:
(Start: 57 @41339 has 35 MA's), (79, 41246), (80, 41231), (96, 41168), (102, 41123), (107, 41102),

Gene: Lockley_65 Start: 42740, Stop: 42447, Start Num: 40
Candidate Starts for Lockley_65:
(27, 42767), (Start: 40 @42740 has 190 MA's), (Start: 66 @42695 has 3 MA's), (70, 42665), (77, 42617), (84, 42575),

Gene: Lokk_65 Start: 41753, Stop: 41511, Start Num: 67
Candidate Starts for Lokk_65:
(Start: 67 @41753 has 64 MA's), (79, 41678), (84, 41645), (94, 41612), (96, 41603),

Gene: LoneWolf_73 Start: 42713, Stop: 42423, Start Num: 46
Candidate Starts for LoneWolf_73:
(Start: 46 @42713 has 26 MA's), (78, 42602), (87, 42548), (98, 42509),

Gene: Looper_79 Start: 43387, Stop: 43109, Start Num: 49
Candidate Starts for Looper_79:
(24, 43447), (Start: 49 @43387 has 58 MA's), (74, 43309), (79, 43270), (84, 43237), (93, 43207), (94, 43204), (98, 43183), (103, 43150),

Gene: Lopton_66 Start: 44440, Stop: 44147, Start Num: 40
Candidate Starts for Lopton_66:
(27, 44467), (Start: 40 @44440 has 190 MA's), (Start: 66 @44395 has 3 MA's), (70, 44365), (77, 44317), (84, 44275),

Gene: Loser_72 Start: 43514, Stop: 43275, Start Num: 67
Candidate Starts for Loser_72:
(Start: 45 @43553 has 8 MA's), (Start: 67 @43514 has 64 MA's), (77, 43448), (79, 43439), (84, 43406), (94, 43373), (96, 43364), (98, 43352),

Gene: Luchador_73 Start: 43928, Stop: 43659, Start Num: 54
Candidate Starts for Luchador_73:
(Start: 43 @43949 has 1 MA's), (Start: 54 @43928 has 4 MA's), (Start: 56 @43925 has 1 MA's), (78, 43829), (83, 43793), (84, 43790), (96, 43748), (98, 43736), (106, 43685),

Gene: Lucivia_70 Start: 42084, Stop: 41818, Start Num: 46
Candidate Starts for Lucivia_70:
(Start: 46 @42084 has 26 MA's), (78, 41991), (84, 41952), (94, 41919), (96, 41910), (98, 41898), (102, 41865),

Gene: Lucyedi_75 Start: 43494, Stop: 43234, Start Num: 52
Candidate Starts for Lucyedi_75:
(16, 43650), (25, 43560), (31, 43542), (Start: 33 @43536 has 1 MA's), (Start: 52 @43494 has 2 MA's), (83, 43356), (98, 43299),

Gene: MPlant7149_66 Start: 41586, Stop: 41293, Start Num: 40
Candidate Starts for MPlant7149_66:
(5, 41814), (27, 41613), (Start: 40 @41586 has 190 MA's), (Start: 66 @41541 has 3 MA's), (70, 41511), (77, 41463), (84, 41421),

Gene: MaCh_69 Start: 42030, Stop: 41764, Start Num: 46

Candidate Starts for MaCh_69:

(Start: 46 @42030 has 26 MA's), (78, 41937), (84, 41898), (94, 41865), (96, 41856), (98, 41844), (102, 41811),

Gene: Mabel_69 Start: 42031, Stop: 41765, Start Num: 46

Candidate Starts for Mabel_69:

(Start: 46 @42031 has 26 MA's), (78, 41938), (84, 41899), (94, 41866), (96, 41857), (98, 41845), (102, 41812),

Gene: Magnar_65 Start: 42659, Stop: 42366, Start Num: 40

Candidate Starts for Magnar_65:

(27, 42686), (Start: 40 @42659 has 190 MA's), (Start: 66 @42614 has 3 MA's), (70, 42584), (77, 42536), (84, 42494),

Gene: Magnito_67 Start: 42855, Stop: 42562, Start Num: 40

Candidate Starts for Magnito_67:

(27, 42882), (Start: 40 @42855 has 190 MA's), (Start: 66 @42810 has 3 MA's), (70, 42780), (77, 42732), (84, 42690),

Gene: Makemake_72 Start: 44876, Stop: 44583, Start Num: 40

Candidate Starts for Makemake_72:

(Start: 40 @44876 has 190 MA's), (Start: 66 @44831 has 3 MA's), (70, 44801), (77, 44753), (84, 44711),

Gene: Malec_69 Start: 43510, Stop: 43271, Start Num: 67

Candidate Starts for Malec_69:

(Start: 67 @43510 has 64 MA's), (79, 43435), (84, 43402), (87, 43387), (94, 43369), (96, 43360), (98, 43348), (109, 43291),

Gene: Maminiaina_73 Start: 42834, Stop: 42550, Start Num: 46

Candidate Starts for Maminiaina_73:

(Start: 46 @42834 has 26 MA's), (78, 42723), (84, 42684), (98, 42630),

Gene: Manatee_66 Start: 42327, Stop: 42034, Start Num: 40

Candidate Starts for Manatee_66:

(Start: 40 @42327 has 190 MA's), (Start: 66 @42282 has 3 MA's), (70, 42252), (77, 42204), (84, 42162),

Gene: Marcell_62 Start: 41366, Stop: 41073, Start Num: 40

Candidate Starts for Marcell_62:

(27, 41393), (Start: 40 @41366 has 190 MA's), (Start: 66 @41321 has 3 MA's), (70, 41291), (77, 41243), (84, 41201),

Gene: Marge_62 Start: 41896, Stop: 41603, Start Num: 40

Candidate Starts for Marge_62:

(27, 41923), (Start: 40 @41896 has 190 MA's), (Start: 66 @41851 has 3 MA's), (70, 41821), (77, 41773), (84, 41731),

Gene: Maroc7_65 Start: 43339, Stop: 43046, Start Num: 40

Candidate Starts for Maroc7_65:

(27, 43366), (Start: 40 @43339 has 190 MA's), (Start: 66 @43294 has 3 MA's), (70, 43264), (73, 43252), (77, 43216), (84, 43174),

Gene: Marsha_66 Start: 43889, Stop: 43596, Start Num: 40

Candidate Starts for Marsha_66:

(Start: 40 @43889 has 190 MA's), (Start: 66 @43844 has 3 MA's), (70, 43814), (77, 43766), (84, 43724),

Gene: MaryBeth_63 Start: 42720, Stop: 42427, Start Num: 40

Candidate Starts for MaryBeth_63:

(27, 42747), (Start: 40 @42720 has 190 MA's), (Start: 66 @42675 has 3 MA's), (70, 42645), (77, 42597), (84, 42555),

Gene: MarysWell_65 Start: 42016, Stop: 41765, Start Num: 57

Candidate Starts for MarysWell_65:

(Start: 57 @42016 has 35 MA's), (77, 41932), (79, 41923), (80, 41908), (96, 41845), (102, 41800), (107, 41779),

Gene: McFly_71 Start: 41284, Stop: 41036, Start Num: 62

Candidate Starts for McFly_71:

(10, 41524), (18, 41452), (27, 41371), (Start: 40 @41326 has 190 MA's), (Start: 62 @41284 has 18 MA's), (77, 41209), (84, 41167), (93, 41137), (96, 41125),

Gene: McGuire_66 Start: 41690, Stop: 41397, Start Num: 40

Candidate Starts for McGuire_66:

(27, 41717), (Start: 40 @41690 has 190 MA's), (Start: 66 @41645 has 3 MA's), (70, 41615), (77, 41567), (84, 41525),

Gene: MetalQZJ_62 Start: 42720, Stop: 42427, Start Num: 40

Candidate Starts for MetalQZJ_62:

(27, 42747), (Start: 40 @42720 has 190 MA's), (Start: 66 @42675 has 3 MA's), (70, 42645), (77, 42597), (84, 42555),

Gene: Micasa_63 Start: 41738, Stop: 41487, Start Num: 57

Candidate Starts for Micasa_63:

(Start: 57 @41738 has 35 MA's), (77, 41654), (79, 41645), (80, 41630), (96, 41567), (102, 41522), (107, 41501),

Gene: Michley_70 Start: 43281, Stop: 42988, Start Num: 40

Candidate Starts for Michley_70:

(Start: 40 @43281 has 190 MA's), (Start: 66 @43236 has 3 MA's), (70, 43206), (73, 43194), (77, 43158), (84, 43116),

Gene: MiculUcigas_71 Start: 42957, Stop: 42718, Start Num: 67

Candidate Starts for MiculUcigas_71:

(Start: 45 @42996 has 8 MA's), (Start: 67 @42957 has 64 MA's), (Start: 72 @42930 has 1 MA's), (73, 42927), (79, 42882), (84, 42849), (94, 42816), (96, 42807), (98, 42795), (109, 42738),

Gene: Midas2_62 Start: 41634, Stop: 41383, Start Num: 57

Candidate Starts for Midas2_62:

(Start: 57 @41634 has 35 MA's), (Start: 64 @41622 has 2 MA's), (79, 41541), (80, 41526), (96, 41463), (102, 41418), (107, 41397), (111, 41391),

Gene: Miko_65 Start: 42531, Stop: 42289, Start Num: 67

Candidate Starts for Miko_65:

(Start: 67 @42531 has 64 MA's), (Start: 72 @42504 has 1 MA's), (79, 42456), (84, 42423), (94, 42390), (96, 42381),

Gene: Milcery_65 Start: 41528, Stop: 41277, Start Num: 57

Candidate Starts for Milcery_65:

(Start: 57 @41528 has 35 MA's), (79, 41435), (80, 41420), (96, 41357), (102, 41312), (107, 41291),

Gene: MinecraftSteve_80 Start: 43368, Stop: 43090, Start Num: 49

Candidate Starts for MinecraftSteve_80:

(24, 43428), (Start: 49 @43368 has 58 MA's), (74, 43290), (79, 43251), (84, 43218), (93, 43188), (94, 43185), (98, 43164), (103, 43131),

Gene: MissWhite_70 Start: 41650, Stop: 41378, Start Num: 49

Candidate Starts for MissWhite_70:

(Start: 49 @41650 has 58 MA's), (Start: 67 @41617 has 64 MA's), (Start: 72 @41590 has 1 MA's), (77, 41551), (79, 41542), (84, 41509), (94, 41476), (96, 41467), (98, 41455), (101, 41440), (112, 41386),

Gene: Molly_67 Start: 42963, Stop: 42670, Start Num: 40

Candidate Starts for Molly_67:

(27, 42990), (Start: 40 @42963 has 190 MA's), (Start: 66 @42918 has 3 MA's), (70, 42888), (77, 42840), (84, 42798),

Gene: Monet_68 Start: 44284, Stop: 43991, Start Num: 40

Candidate Starts for Monet_68:

(27, 44311), (Start: 40 @44284 has 190 MA's), (Start: 66 @44239 has 3 MA's), (70, 44209), (77, 44161), (84, 44119),

Gene: Moose_67 Start: 42412, Stop: 42119, Start Num: 40

Candidate Starts for Moose_67:

(27, 42439), (Start: 40 @42412 has 190 MA's), (Start: 66 @42367 has 3 MA's), (70, 42337), (77, 42289), (84, 42247),

Gene: MrGordo_69 Start: 43202, Stop: 42909, Start Num: 40

Candidate Starts for MrGordo_69:

(Start: 40 @43202 has 190 MA's), (Start: 66 @43157 has 3 MA's), (70, 43127), (77, 43079),

Gene: Mryolo_64 Start: 42236, Stop: 41943, Start Num: 40

Candidate Starts for Mryolo_64:

(27, 42263), (Start: 40 @42236 has 190 MA's), (Start: 66 @42191 has 3 MA's), (70, 42161), (77, 42113), (84, 42071),

Gene: Mulciber_68 Start: 41572, Stop: 41306, Start Num: 46

Candidate Starts for Mulciber_68:

(Start: 46 @41572 has 26 MA's), (78, 41479), (84, 41440), (94, 41407), (96, 41398), (98, 41386), (102, 41353),

Gene: Mule_63 Start: 41944, Stop: 41651, Start Num: 40

Candidate Starts for Mule_63:

(Start: 40 @41944 has 190 MA's), (Start: 66 @41899 has 3 MA's), (70, 41869), (77, 41821), (84, 41779),

Gene: Munch_69 Start: 42035, Stop: 41769, Start Num: 46

Candidate Starts for Munch_69:

(Start: 46 @42035 has 26 MA's), (78, 41942), (84, 41903), (94, 41870), (96, 41861), (98, 41849), (102, 41816),

Gene: Museum_68 Start: 44182, Stop: 43889, Start Num: 40

Candidate Starts for Museum_68:

(27, 44209), (Start: 40 @44182 has 190 MA's), (Start: 66 @44137 has 3 MA's), (70, 44107), (77, 44059), (84, 44017),

Gene: MyraDee_69 Start: 40422, Stop: 40147, Start Num: 48

Candidate Starts for MyraDee_69:

(Start: 48 @40422 has 23 MA's), (77, 40317), (78, 40314), (79, 40308), (93, 40245), (94, 40242), (96, 40233),

Gene: Myxus_73 Start: 42693, Stop: 42415, Start Num: 48

Candidate Starts for Myxus_73:

(Start: 48 @42693 has 23 MA's), (78, 42585), (87, 42531), (89, 42522), (98, 42492),

Gene: NEHalo_63 Start: 42836, Stop: 42543, Start Num: 40

Candidate Starts for NEHalo_63:

(27, 42863), (Start: 40 @42836 has 190 MA's), (Start: 66 @42791 has 3 MA's), (70, 42761), (77, 42713), (84, 42671),

Gene: NaSiaTalie_71 Start: 43051, Stop: 42812, Start Num: 67

Candidate Starts for NaSiaTalie_71:

(Start: 45 @43090 has 8 MA's), (Start: 67 @43051 has 64 MA's), (Start: 72 @43024 has 1 MA's), (73, 43021), (79, 42976), (84, 42943), (94, 42910), (96, 42901), (98, 42889), (109, 42832),

Gene: Naca_68 Start: 42929, Stop: 42675, Start Num: 57

Candidate Starts for Naca_68:

(Start: 57 @42929 has 35 MA's), (79, 42836), (80, 42821), (96, 42758), (102, 42713), (107, 42692), (111, 42686),

Gene: Naira_71 Start: 44806, Stop: 44513, Start Num: 40

Candidate Starts for Naira_71:

(27, 44851), (32, 44833), (Start: 40 @44806 has 190 MA's), (Start: 66 @44761 has 3 MA's), (70, 44731), (77, 44683), (84, 44641),

Gene: Naji_74 Start: 43721, Stop: 43488, Start Num: 49

Candidate Starts for Naji_74:

(Start: 49 @43721 has 58 MA's), (79, 43643), (84, 43610), (94, 43577), (98, 43556), (107, 43502),

Gene: NearlyHeadless_81 Start: 43932, Stop: 43648, Start Num: 63

Candidate Starts for NearlyHeadless_81:

(Start: 63 @43932 has 19 MA's), (Start: 72 @43890 has 1 MA's), (78, 43848), (79, 43842), (94, 43770), (96, 43761), (97, 43752),

Gene: Nebulosus_77 Start: 43032, Stop: 42754, Start Num: 49

Candidate Starts for Nebulosus_77:

(24, 43092), (Start: 49 @43032 has 58 MA's), (74, 42954), (79, 42915), (84, 42882), (93, 42852), (94, 42849), (98, 42828), (103, 42795),

Gene: Nedarya_76 Start: 43628, Stop: 43350, Start Num: 49

Candidate Starts for Nedarya_76:

(Start: 49 @43628 has 58 MA's), (74, 43550), (79, 43511), (84, 43478), (98, 43424), (103, 43391),

Gene: Neeharika16_68 Start: 40751, Stop: 40503, Start Num: 62

Candidate Starts for Neeharika16_68:

(10, 40991), (18, 40919), (27, 40838), (Start: 40 @40793 has 190 MA's), (Start: 62 @40751 has 18 MA's), (77, 40676), (84, 40634), (93, 40604), (96, 40592),

Gene: Nerujay_71 Start: 44385, Stop: 44092, Start Num: 40

Candidate Starts for Nerujay_71:

(27, 44412), (Start: 40 @44385 has 190 MA's), (Start: 66 @44340 has 3 MA's), (70, 44310), (77, 44262), (84, 44220),

Gene: Newrala_71 Start: 41291, Stop: 41043, Start Num: 62

Candidate Starts for Newrala_71:

(10, 41531), (18, 41459), (27, 41378), (Start: 40 @41333 has 190 MA's), (Start: 62 @41291 has 18 MA's), (77, 41216), (84, 41174), (93, 41144), (96, 41132),

Gene: Nhonho_65 Start: 43327, Stop: 43034, Start Num: 40

Candidate Starts for Nhonho_65:

(27, 43354), (Start: 40 @43327 has 190 MA's), (Start: 66 @43282 has 3 MA's), (70, 43252), (73, 43240), (77, 43204), (84, 43162),

Gene: NicoleTera_68 Start: 43116, Stop: 42838, Start Num: 45

Candidate Starts for NicoleTera_68:

(28, 43173), (Start: 45 @43116 has 8 MA's), (Start: 67 @43077 has 64 MA's), (79, 43002), (84, 42969), (94, 42936), (96, 42927), (98, 42915), (110, 42855),

Gene: Niza_68 Start: 44472, Stop: 44179, Start Num: 40

Candidate Starts for Niza_68:

(Start: 40 @44472 has 190 MA's), (Start: 66 @44427 has 3 MA's), (70, 44397), (73, 44385), (77, 44349), (84, 44307),

Gene: Norz_65 Start: 44712, Stop: 44419, Start Num: 40

Candidate Starts for Norz_65:

(27, 44739), (Start: 40 @44712 has 190 MA's), (Start: 66 @44667 has 3 MA's), (70, 44637), (77, 44589), (84, 44547),

Gene: NothingSpecial_67 Start: 43318, Stop: 43031, Start Num: 45

Candidate Starts for NothingSpecial_67:

(34, 43354), (Start: 45 @43318 has 8 MA's), (Start: 67 @43279 has 64 MA's), (77, 43204), (79, 43195), (84, 43162), (94, 43129), (96, 43120), (98, 43108),

Gene: Odin_71 Start: 42102, Stop: 41860, Start Num: 66

Candidate Starts for Odin_71:

(Start: 66 @42102 has 3 MA's), (77, 42027), (80, 42003), (83, 41988), (84, 41985), (85, 41979), (86, 41976), (94, 41952), (98, 41931),

Gene: Ohno789_67 Start: 43300, Stop: 43007, Start Num: 40

Candidate Starts for Ohno789_67:

(27, 43327), (Start: 40 @43300 has 190 MA's), (Start: 66 @43255 has 3 MA's), (70, 43225), (73, 43213), (77, 43177), (84, 43135),

Gene: Oofda_80 Start: 43721, Stop: 43443, Start Num: 49

Candidate Starts for Oofda_80:

(23, 43796), (Start: 49 @43721 has 58 MA's), (74, 43643), (79, 43604), (84, 43571), (93, 43541), (94, 43538), (98, 43517), (103, 43484),

Gene: Oogway_64 Start: 43355, Stop: 43062, Start Num: 40

Candidate Starts for Oogway_64:

(27, 43382), (Start: 40 @43355 has 190 MA's), (Start: 66 @43310 has 3 MA's), (70, 43280), (77, 43232), (84, 43190),

Gene: Orange_68 Start: 41584, Stop: 41318, Start Num: 46

Candidate Starts for Orange_68:

(Start: 46 @41584 has 26 MA's), (78, 41491), (84, 41452), (94, 41419), (96, 41410), (98, 41398), (102, 41365),

Gene: PSullivan_63 Start: 41080, Stop: 40787, Start Num: 40

Candidate Starts for PSullivan_63:

(27, 41107), (Start: 40 @41080 has 190 MA's), (Start: 66 @41035 has 3 MA's), (70, 41005), (77, 40957), (84, 40915),

Gene: PacerPaul_66 Start: 42858, Stop: 42565, Start Num: 40

Candidate Starts for PacerPaul_66:

(Start: 40 @42858 has 190 MA's), (Start: 66 @42813 has 3 MA's), (70, 42783), (77, 42735), (84, 42693),

Gene: PackMan_72 Start: 42568, Stop: 42290, Start Num: 48

Candidate Starts for PackMan_72:

(Start: 48 @42568 has 23 MA's), (78, 42460), (87, 42406), (89, 42397), (98, 42367),

Gene: PainterBoy_74 Start: 43245, Stop: 42943, Start Num: 33

Candidate Starts for PainterBoy_74:

(16, 43359), (25, 43269), (31, 43251), (Start: 33 @43245 has 1 MA's), (Start: 52 @43203 has 2 MA's), (83, 43065), (98, 43008),

Gene: Papez_68 Start: 44027, Stop: 43731, Start Num: 40

Candidate Starts for Papez_68:

(Start: 40 @44027 has 190 MA's), (77, 43901), (84, 43859),

Gene: Paphu_65 Start: 43166, Stop: 42873, Start Num: 40

Candidate Starts for Paphu_65:

(Start: 40 @43166 has 190 MA's), (Start: 66 @43121 has 3 MA's), (70, 43091), (77, 43043), (84, 43001),

Gene: Paraselene_67 Start: 43668, Stop: 43375, Start Num: 40

Candidate Starts for Paraselene_67:

(Start: 40 @43668 has 190 MA's), (Start: 66 @43623 has 3 MA's), (70, 43593), (77, 43545), (84, 43503),

Gene: Pari_70 Start: 42376, Stop: 42083, Start Num: 40

Candidate Starts for Pari_70:

(27, 42403), (Start: 40 @42376 has 190 MA's), (Start: 66 @42331 has 3 MA's), (70, 42301), (77, 42253), (84, 42211),

Gene: Parliament_67 Start: 44958, Stop: 44665, Start Num: 40

Candidate Starts for Parliament_67:

(Start: 40 @44958 has 190 MA's), (Start: 66 @44913 has 3 MA's), (70, 44883), (73, 44871), (77, 44835), (84, 44793),

Gene: PascalRango_63 Start: 42153, Stop: 41860, Start Num: 40

Candidate Starts for PascalRango_63:

(27, 42180), (Start: 40 @42153 has 190 MA's), (Start: 66 @42108 has 3 MA's), (70, 42078), (77, 42030), (84, 41988),

Gene: PattyP_68 Start: 43888, Stop: 43595, Start Num: 40

Candidate Starts for PattyP_68:

(27, 43915), (Start: 40 @43888 has 190 MA's), (Start: 66 @43843 has 3 MA's), (70, 43813), (77, 43765), (84, 43723),

Gene: Pawn_70 Start: 42208, Stop: 41954, Start Num: 63

Candidate Starts for Pawn_70:

(Start: 37 @42262 has 1 MA's), (Start: 43 @42244 has 1 MA's), (50, 42229), (Start: 63 @42208 has 19 MA's), (69, 42175), (77, 42124), (79, 42115), (82, 42088), (84, 42082), (86, 42073), (94, 42049),

Gene: Pelly_66 Start: 44825, Stop: 44532, Start Num: 40

Candidate Starts for Pelly_66:

(27, 44852), (Start: 40 @44825 has 190 MA's), (Start: 66 @44780 has 3 MA's), (77, 44702), (84, 44660),

Gene: Pepe_64 Start: 41654, Stop: 41361, Start Num: 40

Candidate Starts for Pepe_64:

(Start: 40 @41654 has 190 MA's), (Start: 66 @41609 has 3 MA's), (70, 41579), (77, 41531), (84, 41489),

Gene: Perseus_64 Start: 44104, Stop: 43811, Start Num: 40

Candidate Starts for Perseus_64:

(Start: 40 @44104 has 190 MA's), (Start: 66 @44059 has 3 MA's), (70, 44029), (77, 43981), (84, 43939),

Gene: Petersenfast_67 Start: 41583, Stop: 41317, Start Num: 46

Candidate Starts for Petersenfast_67:

(Start: 46 @41583 has 26 MA's), (78, 41490), (84, 41451), (94, 41418), (96, 41409), (98, 41397), (102, 41364),

Gene: Peterson_69 Start: 44970, Stop: 44677, Start Num: 40

Candidate Starts for Peterson_69:

(Start: 40 @44970 has 190 MA's), (Start: 66 @44925 has 3 MA's), (70, 44895), (77, 44847), (84, 44805),

Gene: Petp2012_69 Start: 44669, Stop: 44376, Start Num: 40

Candidate Starts for Petp2012_69:

(27, 44696), (Start: 40 @44669 has 190 MA's), (Start: 66 @44624 has 3 MA's), (70, 44594), (77, 44546), (84, 44504),

Gene: Petruccio_68 Start: 42490, Stop: 42197, Start Num: 40

Candidate Starts for Petruccio_68:

(2, 42748), (6, 42712), (27, 42517), (Start: 40 @42490 has 190 MA's), (Start: 66 @42445 has 3 MA's), (70, 42415), (77, 42367), (84, 42325),

Gene: PetterN_73 Start: 42716, Stop: 42465, Start Num: 57

Candidate Starts for PetterN_73:

(Start: 57 @42716 has 35 MA's), (79, 42623), (80, 42608), (96, 42545), (102, 42500), (107, 42479),

Gene: Ph8s_74 Start: 42194, Stop: 41919, Start Num: 49

Candidate Starts for Ph8s_74:

(Start: 49 @42194 has 58 MA's), (Start: 56 @42185 has 1 MA's), (Start: 72 @42125 has 1 MA's), (77, 42086), (84, 42044), (86, 42035), (94, 42011), (98, 41990),

Gene: Phaded_66 Start: 43672, Stop: 43412, Start Num: 62

Candidate Starts for Phaded_66:

(18, 43840), (27, 43759), (Start: 62 @43672 has 18 MA's), (79, 43576), (84, 43543), (94, 43510), (96, 43501), (98, 43489),

Gene: Phaeder_73 Start: 42568, Stop: 42290, Start Num: 48

Candidate Starts for Phaeder_73:

(Start: 48 @42568 has 23 MA's), (78, 42460), (87, 42406), (89, 42397), (98, 42367),

Gene: Pharaoh_67 Start: 42614, Stop: 42354, Start Num: 61

Candidate Starts for Pharaoh_67:

(Start: 61 @42614 has 1 MA's), (78, 42521), (79, 42515), (84, 42482), (86, 42473),

Gene: PherrisBueller_67 Start: 41610, Stop: 41317, Start Num: 40

Candidate Starts for PherrisBueller_67:

(27, 41637), (Start: 40 @41610 has 190 MA's), (Start: 66 @41565 has 3 MA's), (70, 41535), (77, 41487), (84, 41445),

Gene: Phillis_77 Start: 42884, Stop: 42600, Start Num: 63

Candidate Starts for Phillis_77:

(Start: 63 @42884 has 19 MA's), (Start: 72 @42842 has 1 MA's), (78, 42800), (79, 42794), (94, 42722), (96, 42713), (97, 42704),

Gene: Phlei_58 Start: 41698, Stop: 41450, Start Num: 49

Candidate Starts for Phlei_58:

(Start: 49 @41698 has 58 MA's), (55, 41689), (59, 41683), (Start: 72 @41653 has 1 MA's), (76, 41638), (77, 41614), (79, 41605), (81, 41581), (84, 41572), (87, 41557), (94, 41539), (98, 41518),

Gene: Phlorence_64 Start: 41521, Stop: 41270, Start Num: 57

Candidate Starts for Phlorence_64:

(Start: 57 @41521 has 35 MA's), (79, 41428), (80, 41413), (96, 41350), (102, 41305), (107, 41284), (111, 41278),

Gene: Phoebe_73 Start: 42380, Stop: 42126, Start Num: 63

Candidate Starts for Phoebe_73:

(Start: 37 @42434 has 1 MA's), (Start: 43 @42416 has 1 MA's), (50, 42401), (Start: 63 @42380 has 19 MA's), (69, 42347), (77, 42296), (79, 42287), (82, 42260), (84, 42254), (94, 42221),

Gene: Phonnegut_73 Start: 42638, Stop: 42360, Start Num: 48

Candidate Starts for Phonnegut_73:

(Start: 48 @42638 has 23 MA's), (78, 42530), (87, 42476), (89, 42467), (98, 42437),

Gene: Phranny_72 Start: 42190, Stop: 41936, Start Num: 63

Candidate Starts for Phranny_72:

(50, 42211), (Start: 63 @42190 has 19 MA's), (69, 42157), (77, 42106), (79, 42097), (82, 42070), (84, 42064), (86, 42055), (94, 42031),

Gene: PhrostyMug_66 Start: 44118, Stop: 43825, Start Num: 40

Candidate Starts for PhrostyMug_66:

(Start: 40 @44118 has 190 MA's), (Start: 66 @44073 has 3 MA's), (70, 44043), (77, 43995), (84, 43953),

Gene: PickleBack_66 Start: 41698, Stop: 41447, Start Num: 57

Candidate Starts for PickleBack_66:

(Start: 57 @41698 has 35 MA's), (79, 41605), (80, 41590), (96, 41527), (102, 41482), (107, 41461), (111, 41455),

Gene: PinkPlastic_65 Start: 42426, Stop: 42133, Start Num: 40

Candidate Starts for PinkPlastic_65:

(27, 42453), (Start: 40 @42426 has 190 MA's), (Start: 66 @42381 has 3 MA's), (70, 42351), (77, 42303), (84, 42261),

Gene: Pinto_66 Start: 42379, Stop: 42086, Start Num: 40

Candidate Starts for Pinto_66:

(2, 42637), (6, 42601), (27, 42406), (Start: 40 @42379 has 190 MA's), (Start: 66 @42334 has 3 MA's), (70, 42304), (77, 42256), (84, 42214),

Gene: Pioneer_73 Start: 42638, Stop: 42360, Start Num: 48

Candidate Starts for Pioneer_73:

(Start: 48 @42638 has 23 MA's), (78, 42530), (87, 42476), (89, 42467), (98, 42437),

Gene: Pippin_65 Start: 41805, Stop: 41512, Start Num: 40

Candidate Starts for Pippin_65:

(27, 41832), (Start: 40 @41805 has 190 MA's), (Start: 66 @41760 has 3 MA's), (70, 41730), (77, 41682), (84, 41640),

Gene: Piro94_70 Start: 43019, Stop: 42780, Start Num: 67

Candidate Starts for Piro94_70:

(Start: 67 @43019 has 64 MA's), (Start: 72 @42992 has 1 MA's), (73, 42989), (79, 42944), (84, 42911), (94, 42878), (96, 42869), (98, 42857),

Gene: Pita2_67 Start: 42577, Stop: 42284, Start Num: 40

Candidate Starts for Pita2_67:

(27, 42604), (Start: 40 @42577 has 190 MA's), (Start: 66 @42532 has 3 MA's), (70, 42502), (77, 42454), (84, 42412),

Gene: Pmask_70 Start: 41287, Stop: 41039, Start Num: 62

Candidate Starts for Pmask_70:

(10, 41527), (18, 41455), (27, 41374), (Start: 40 @41329 has 190 MA's), (Start: 62 @41287 has 18 MA's), (77, 41212), (84, 41170), (93, 41140), (96, 41128),

Gene: Pomar16_73 Start: 43761, Stop: 43528, Start Num: 49

Candidate Starts for Pomar16_73:

(Start: 49 @43761 has 58 MA's), (79, 43683), (84, 43650), (94, 43617), (98, 43596), (107, 43542),

Gene: Power_70 Start: 43392, Stop: 43153, Start Num: 67

Candidate Starts for Power_70:

(Start: 45 @43431 has 8 MA's), (Start: 67 @43392 has 64 MA's), (79, 43317), (84, 43284), (94, 43251), (96, 43242), (98, 43230), (109, 43173),

Gene: Priamo_73 Start: 41142, Stop: 40894, Start Num: 62

Candidate Starts for Priamo_73:

(10, 41382), (18, 41310), (27, 41229), (Start: 40 @41184 has 190 MA's), (Start: 62 @41142 has 18 MA's), (77, 41067), (84, 41025), (93, 40995), (96, 40983),

Gene: Priya_71 Start: 42365, Stop: 42087, Start Num: 48

Candidate Starts for Priya_71:

(Start: 48 @42365 has 23 MA's), (78, 42257), (87, 42203), (89, 42194), (98, 42164),

Gene: Pukovnik_67 Start: 43337, Stop: 43080, Start Num: 62

Candidate Starts for Pukovnik_67:

(18, 43505), (Start: 62 @43337 has 18 MA's), (79, 43244), (84, 43211), (94, 43178), (96, 43169), (98, 43157),

Gene: QTRlifeCrisis_69 Start: 43106, Stop: 42813, Start Num: 40

Candidate Starts for QTRlifeCrisis_69:

(27, 43133), (Start: 40 @43106 has 190 MA's), (Start: 66 @43061 has 3 MA's), (70, 43031), (77, 42983), (84, 42941),

Gene: Qobbit_71 Start: 42327, Stop: 42049, Start Num: 48

Candidate Starts for Qobbit_71:

(Start: 48 @42327 has 23 MA's), (78, 42219), (87, 42165), (89, 42156), (98, 42126),

Gene: QueenB2_69 Start: 42866, Stop: 42627, Start Num: 67

Candidate Starts for QueenB2_69:

(Start: 45 @42905 has 8 MA's), (Start: 67 @42866 has 64 MA's), (79, 42791), (84, 42758), (94, 42725), (96, 42716), (98, 42704), (110, 42644),

Gene: QueenBeesly_71 Start: 43349, Stop: 43110, Start Num: 67

Candidate Starts for QueenBeesly_71:

(Start: 45 @43388 has 8 MA's), (Start: 67 @43349 has 64 MA's), (79, 43274), (84, 43241), (94, 43208), (96, 43199), (98, 43187), (109, 43130),

Gene: Rachaly_67 Start: 42676, Stop: 42434, Start Num: 67

Candidate Starts for Rachaly_67:

(Start: 67 @42676 has 64 MA's), (Start: 72 @42649 has 1 MA's), (79, 42601), (84, 42568), (94, 42535), (96, 42526),

Gene: Rahalelujah_72 Start: 42339, Stop: 42037, Start Num: 38

Candidate Starts for Rahalelujah_72:

(7, 42549), (Start: 38 @42339 has 1 MA's), (84, 42177), (98, 42123),

Gene: Rajelicia_66 Start: 44209, Stop: 43916, Start Num: 40

Candidate Starts for Rajelicia_66:

(27, 44236), (Start: 40 @44209 has 190 MA's), (Start: 66 @44164 has 3 MA's), (70, 44134), (77, 44086), (84, 44044),

Gene: ReMo_78 Start: 43472, Stop: 43194, Start Num: 49

Candidate Starts for ReMo_78:

(24, 43532), (Start: 49 @43472 has 58 MA's), (74, 43394), (79, 43355), (84, 43322), (93, 43292), (94, 43289), (98, 43268), (103, 43235),

Gene: Reba_71 Start: 41863, Stop: 41609, Start Num: 63

Candidate Starts for Reba_71:

(50, 41884), (Start: 63 @41863 has 19 MA's), (69, 41830), (77, 41779), (79, 41770), (82, 41743), (84, 41737), (86, 41728), (94, 41704),

Gene: RedRock_70 Start: 43508, Stop: 43269, Start Num: 67

Candidate Starts for RedRock_70:

(Start: 67 @43508 has 64 MA's), (77, 43442), (79, 43433), (84, 43400), (94, 43367), (96, 43358), (98, 43346),

Gene: Refuge_68 Start: 43722, Stop: 43405, Start Num: 36

Candidate Starts for Refuge_68:

(14, 43860), (19, 43821), (Start: 35 @43725 has 1 MA's), (Start: 36 @43722 has 3 MA's), (Start: 61 @43668 has 1 MA's), (Start: 72 @43617 has 1 MA's), (77, 43578), (79, 43569), (84, 43536),

Gene: Remus_81 Start: 43800, Stop: 43522, Start Num: 49

Candidate Starts for Remus_81:

(23, 43875), (Start: 49 @43800 has 58 MA's), (74, 43722), (79, 43683), (84, 43650), (93, 43620), (94, 43617), (98, 43596), (103, 43563),

Gene: Retro23_71 Start: 43080, Stop: 42841, Start Num: 67

Candidate Starts for Retro23_71:

(Start: 45 @43119 has 8 MA's), (Start: 67 @43080 has 64 MA's), (79, 43005), (84, 42972), (94, 42939), (96, 42930), (98, 42918), (109, 42861),

Gene: Rhynn_62 Start: 42109, Stop: 41816, Start Num: 40

Candidate Starts for Rhynn_62:

(Start: 40 @42109 has 190 MA's), (Start: 66 @42064 has 3 MA's), (70, 42034), (77, 41986), (84, 41944),

Gene: RidgeCB_66 Start: 42526, Stop: 42233, Start Num: 40

Candidate Starts for RidgeCB_66:

(27, 42553), (Start: 40 @42526 has 190 MA's), (Start: 66 @42481 has 3 MA's), (70, 42451), (77, 42403), (84, 42361),

Gene: Rifter_73 Start: 41009, Stop: 40752, Start Num: 49

Candidate Starts for Rifter_73:

(Start: 49 @41009 has 58 MA's), (Start: 56 @41000 has 1 MA's), (77, 40925), (79, 40916), (84, 40883), (93, 40853), (96, 40841),

Gene: Ringer_69 Start: 44632, Stop: 44339, Start Num: 40

Candidate Starts for Ringer_69:

(27, 44659), (Start: 40 @44632 has 190 MA's), (Start: 66 @44587 has 3 MA's), (70, 44557), (77, 44509), (84, 44467),

Gene: Roary_82 Start: 44168, Stop: 43884, Start Num: 63

Candidate Starts for Roary_82:

(Start: 63 @44168 has 19 MA's), (Start: 72 @44126 has 1 MA's), (77, 44087), (78, 44084), (79, 44078), (101, 43970),

Gene: Rohr_67 Start: 43844, Stop: 43551, Start Num: 40

Candidate Starts for Rohr_67:

(27, 43871), (Start: 40 @43844 has 190 MA's), (Start: 66 @43799 has 3 MA's), (70, 43769), (77, 43721), (84, 43679),

Gene: Roksolana_73 Start: 41743, Stop: 41486, Start Num: 49

Candidate Starts for Roksolana_73:

(Start: 49 @41743 has 58 MA's), (Start: 56 @41734 has 1 MA's), (77, 41659), (79, 41650), (84, 41617), (93, 41587), (96, 41575), (112, 41494),

Gene: Rosalind_78 Start: 43296, Stop: 43018, Start Num: 49

Candidate Starts for Rosalind_78:

(24, 43356), (Start: 49 @43296 has 58 MA's), (74, 43218), (79, 43179), (84, 43146), (93, 43116), (94, 43113), (98, 43092), (103, 43059),

Gene: Rubeus_65 Start: 40346, Stop: 40053, Start Num: 40

Candidate Starts for Rubeus_65:

(27, 40373), (Start: 40 @40346 has 190 MA's), (Start: 66 @40301 has 3 MA's), (70, 40271), (77, 40223), (84, 40181),

Gene: Rufus_68 Start: 43030, Stop: 42737, Start Num: 40

Candidate Starts for Rufus_68:

(27, 43057), (Start: 40 @43030 has 190 MA's), (Start: 66 @42985 has 3 MA's), (70, 42955), (77, 42907), (84, 42865),

Gene: Ruotula_72 Start: 45133, Stop: 44840, Start Num: 40

Candidate Starts for Ruotula_72:

(27, 45160), (Start: 40 @45133 has 190 MA's), (Start: 66 @45088 has 3 MA's), (70, 45058), (77, 45010), (84, 44968),

Gene: Rutherferd_67 Start: 43925, Stop: 43632, Start Num: 40

Candidate Starts for Rutherferd_67:

(Start: 40 @43925 has 190 MA's), (Start: 66 @43880 has 3 MA's), (77, 43802), (84, 43760),

Gene: STLscum_75 Start: 44847, Stop: 44554, Start Num: 40

Candidate Starts for STLscum_75:

(Start: 40 @44847 has 190 MA's), (Start: 66 @44802 has 3 MA's), (70, 44772), (77, 44724), (84, 44682),

Gene: Sagefire_67 Start: 44059, Stop: 43766, Start Num: 40

Candidate Starts for Sagefire_67:

(Start: 40 @44059 has 190 MA's), (Start: 66 @44014 has 3 MA's), (70, 43984), (77, 43936), (84, 43894),

Gene: Saintus_76 Start: 40816, Stop: 40532, Start Num: 63

Candidate Starts for Saintus_76:

(Start: 63 @40816 has 19 MA's), (Start: 72 @40774 has 1 MA's), (78, 40732), (79, 40726), (101, 40618),

Gene: Salz_68 Start: 41498, Stop: 41232, Start Num: 46

Candidate Starts for Salz_68:

(Start: 46 @41498 has 26 MA's), (78, 41405), (84, 41366), (94, 41333), (96, 41324), (98, 41312), (102, 41279),

Gene: SarFire_65 Start: 42573, Stop: 42280, Start Num: 40

Candidate Starts for SarFire_65:

(27, 42600), (Start: 40 @42573 has 190 MA's), (Start: 66 @42528 has 3 MA's), (77, 42450), (84, 42408),

Gene: Scherzo_72 Start: 42857, Stop: 42579, Start Num: 48

Candidate Starts for Scherzo_72:

(Start: 48 @42857 has 23 MA's), (78, 42749), (87, 42695), (89, 42686), (98, 42656),

Gene: Scorpia_69 Start: 42287, Stop: 42036, Start Num: 57

Candidate Starts for Scorpia_69:

(Start: 57 @42287 has 35 MA's), (79, 42194), (80, 42179), (96, 42116), (102, 42071), (107, 42050),

Gene: Scowl_67 Start: 42499, Stop: 42206, Start Num: 40

Candidate Starts for Scowl_67:

(Start: 40 @42499 has 190 MA's), (Start: 66 @42454 has 3 MA's), (70, 42424), (77, 42376), (84, 42334),

Gene: SemperFi_71 Start: 43237, Stop: 42998, Start Num: 67

Candidate Starts for SemperFi_71:

(Start: 45 @43276 has 8 MA's), (Start: 67 @43237 has 64 MA's), (79, 43162), (84, 43129), (94, 43096), (96, 43087), (98, 43075), (109, 43018),

Gene: Serenity_74 Start: 42637, Stop: 42359, Start Num: 45

Candidate Starts for Serenity_74:

(Start: 45 @42637 has 8 MA's), (Start: 67 @42598 has 64 MA's), (76, 42556), (79, 42523), (84, 42490), (93, 42460), (94, 42457), (96, 42448), (98, 42436), (112, 42367),

Gene: Sham4_69 Start: 41582, Stop: 41316, Start Num: 46

Candidate Starts for Sham4_69:

(Start: 46 @41582 has 26 MA's), (78, 41489), (84, 41450), (94, 41417), (96, 41408), (98, 41396), (102, 41363),

Gene: ShayRa_80 Start: 43325, Stop: 43047, Start Num: 49

Candidate Starts for ShayRa_80:

(24, 43385), (Start: 49 @43325 has 58 MA's), (74, 43247), (79, 43208), (84, 43175), (93, 43145), (94, 43142), (98, 43121), (103, 43088),

Gene: SheaKeira_67 Start: 41628, Stop: 41359, Start Num: 48

Candidate Starts for SheaKeira_67:

(Start: 48 @41628 has 23 MA's), (77, 41532), (78, 41529), (87, 41475), (89, 41466), (98, 41436),

Gene: Sibs6_68 Start: 41229, Stop: 40936, Start Num: 40

Candidate Starts for Sibs6_68:

(27, 41256), (Start: 40 @41229 has 190 MA's), (Start: 66 @41184 has 3 MA's), (70, 41154), (77, 41106), (84, 41064),

Gene: SkiPole_74 Start: 44120, Stop: 43827, Start Num: 40

Candidate Starts for SkiPole_74:

(Start: 40 @44120 has 190 MA's), (Start: 66 @44075 has 3 MA's), (70, 44045), (77, 43997), (84, 43955),

Gene: Slagathor_68 Start: 44595, Stop: 44302, Start Num: 40

Candidate Starts for Slagathor_68:

(27, 44622), (Start: 40 @44595 has 190 MA's), (Start: 66 @44550 has 3 MA's), (70, 44520), (77, 44472), (84, 44430),

Gene: Smairt_68 Start: 45112, Stop: 44819, Start Num: 40

Candidate Starts for Smairt_68:

(Start: 40 @45112 has 190 MA's), (Start: 66 @45067 has 3 MA's), (70, 45037), (77, 44989), (84, 44947),

Gene: Smeadley_80 Start: 43984, Stop: 43700, Start Num: 63

Candidate Starts for Smeadley_80:

(Start: 63 @43984 has 19 MA's), (Start: 72 @43942 has 1 MA's), (78, 43900), (79, 43894), (101, 43786),

Gene: Smeagan_73 Start: 43548, Stop: 43309, Start Num: 67

Candidate Starts for Smeagan_73:

(Start: 45 @43587 has 8 MA's), (Start: 67 @43548 has 64 MA's), (79, 43473), (84, 43440), (94, 43407), (96, 43398), (98, 43386),

Gene: Smeagol_68 Start: 44353, Stop: 44060, Start Num: 40

Candidate Starts for Smeagol_68:

(Start: 40 @44353 has 190 MA's), (Start: 66 @44308 has 3 MA's), (70, 44278), (77, 44230), (84, 44188),

Gene: SmellyB_71 Start: 41315, Stop: 41076, Start Num: 65

Candidate Starts for SmellyB_71:

(Start: 65 @41315 has 8 MA's), (79, 41240), (84, 41207), (94, 41174), (96, 41165),

Gene: SnapTap_70 Start: 43048, Stop: 42809, Start Num: 67

Candidate Starts for SnapTap_70:

(Start: 45 @43087 has 8 MA's), (Start: 67 @43048 has 64 MA's), (79, 42973), (84, 42940), (94, 42907), (96, 42898), (98, 42886), (109, 42829),

Gene: Snape_69 Start: 41574, Stop: 41308, Start Num: 46

Candidate Starts for Snape_69:

(Start: 46 @41574 has 26 MA's), (78, 41481), (84, 41442), (94, 41409), (96, 41400), (98, 41388), (102, 41355),

Gene: Snazzy_63 Start: 41494, Stop: 41201, Start Num: 40

Candidate Starts for Snazzy_63:

(32, 41521), (Start: 40 @41494 has 190 MA's), (Start: 66 @41449 has 3 MA's), (70, 41419), (77, 41371), (84, 41329),

Gene: Solon_64 Start: 42070, Stop: 41777, Start Num: 40

Candidate Starts for Solon_64:

(27, 42097), (Start: 40 @42070 has 190 MA's), (Start: 66 @42025 has 3 MA's), (70, 41995), (73, 41983), (77, 41947), (84, 41905),

Gene: SororFago_72 Start: 43648, Stop: 43376, Start Num: 54

Candidate Starts for SororFago_72:

(4, 43936), (Start: 43 @43669 has 1 MA's), (Start: 54 @43648 has 4 MA's), (78, 43546), (83, 43510), (84, 43507), (96, 43465), (98, 43453), (106, 43402),

Gene: Soups_80 Start: 43589, Stop: 43311, Start Num: 49

Candidate Starts for Soups_80:

(23, 43664), (Start: 49 @43589 has 58 MA's), (74, 43511), (79, 43472), (84, 43439), (93, 43409), (94, 43406), (98, 43385), (103, 43352),

Gene: SpikeBT_64 Start: 42693, Stop: 42400, Start Num: 40

Candidate Starts for SpikeBT_64:

(27, 42720), (Start: 40 @42693 has 190 MA's), (Start: 66 @42648 has 3 MA's), (70, 42618), (73, 42606), (77, 42570), (84, 42528),

Gene: Spouty_68 Start: 42364, Stop: 42086, Start Num: 48

Candidate Starts for Spouty_68:

(Start: 48 @42364 has 23 MA's), (78, 42256), (87, 42202), (89, 42193), (98, 42163),

Gene: Squee_69 Start: 42726, Stop: 42433, Start Num: 40

Candidate Starts for Squee_69:

(Start: 40 @42726 has 190 MA's), (Start: 66 @42681 has 3 MA's), (70, 42651), (77, 42603), (84, 42561),

Gene: Stagni_69 Start: 42390, Stop: 42136, Start Num: 63

Candidate Starts for Stagni_69:

(Start: 37 @42444 has 1 MA's), (Start: 43 @42426 has 1 MA's), (50, 42411), (Start: 63 @42390 has 19 MA's), (69, 42357), (77, 42306), (79, 42297), (82, 42270), (84, 42264), (94, 42231),

Gene: StarStuff_74 Start: 43723, Stop: 43490, Start Num: 49

Candidate Starts for StarStuff_74:

(Start: 49 @43723 has 58 MA's), (79, 43645), (84, 43612), (94, 43579), (98, 43558), (107, 43504),

Gene: Steamy_66 Start: 42070, Stop: 41750, Start Num: 35

Candidate Starts for Steamy_66:

(17, 42181), (Start: 35 @42070 has 1 MA's), (Start: 61 @42013 has 1 MA's), (79, 41914), (84, 41881), (87, 41866),

Gene: Stephig9_79 Start: 43923, Stop: 43639, Start Num: 63

Candidate Starts for Stephig9_79:

(Start: 63 @43923 has 19 MA's), (Start: 72 @43881 has 1 MA's), (78, 43839), (79, 43833), (101, 43725),

Gene: StewieG_60 Start: 38877, Stop: 38584, Start Num: 40

Candidate Starts for StewieG_60:

(2, 39135), (6, 39099), (27, 38904), (Start: 40 @38877 has 190 MA's), (Start: 66 @38832 has 3 MA's), (70, 38802), (77, 38754), (84, 38712),

Gene: StrongArm_64 Start: 43443, Stop: 43150, Start Num: 40

Candidate Starts for StrongArm_64:

(27, 43470), (Start: 40 @43443 has 190 MA's), (Start: 66 @43398 has 3 MA's), (70, 43368), (77, 43320), (84, 43278),

Gene: Strosahl_81 Start: 43800, Stop: 43522, Start Num: 49

Candidate Starts for Strosahl_81:

(23, 43875), (Start: 49 @43800 has 58 MA's), (74, 43722), (79, 43683), (84, 43650), (93, 43620), (94, 43617), (98, 43596), (103, 43563),

Gene: Sumter_62 Start: 42684, Stop: 42391, Start Num: 40

Candidate Starts for Sumter_62:

(27, 42711), (Start: 40 @42684 has 190 MA's), (Start: 66 @42639 has 3 MA's), (70, 42609), (77, 42561), (84, 42519),

Gene: Sunshine924_71 Start: 43388, Stop: 43095, Start Num: 40

Candidate Starts for Sunshine924_71:

(Start: 40 @43388 has 190 MA's), (Start: 66 @43343 has 3 MA's), (70, 43313), (77, 43265), (84, 43223),

Gene: SuperAwesome_71 Start: 41329, Stop: 41081, Start Num: 62

Candidate Starts for SuperAwesome_71:

(10, 41569), (18, 41497), (27, 41416), (Start: 40 @41371 has 190 MA's), (Start: 62 @41329 has 18 MA's), (77, 41254), (84, 41212), (93, 41182), (96, 41170),

Gene: SuperCallie99_68 Start: 41171, Stop: 40923, Start Num: 62

Candidate Starts for SuperCallie99_68:

(10, 41411), (18, 41339), (27, 41258), (Start: 40 @41213 has 190 MA's), (Start: 62 @41171 has 18 MA's), (77, 41096), (84, 41054), (93, 41024), (96, 41012),

Gene: Superchunk_72 Start: 41714, Stop: 41472, Start Num: 66

Candidate Starts for Superchunk_72:

(Start: 66 @41714 has 3 MA's), (80, 41615), (83, 41600), (84, 41597), (85, 41591), (86, 41588), (94, 41564), (98, 41543),

Gene: SweetiePie_70 Start: 43180, Stop: 42941, Start Num: 67

Candidate Starts for SweetiePie_70:

(Start: 45 @43219 has 8 MA's), (Start: 67 @43180 has 64 MA's), (79, 43105), (84, 43072), (94, 43039), (96, 43030), (98, 43018), (109, 42961),

Gene: SwirlSquare_77 Start: 42463, Stop: 42188, Start Num: 49

Candidate Starts for SwirlSquare_77:

(1, 42814), (8, 42703), (21, 42577), (Start: 49 @42463 has 58 MA's), (Start: 56 @42454 has 1 MA's), (Start: 72 @42394 has 1 MA's), (84, 42313), (94, 42280),

Gene: Swirley_65 Start: 41678, Stop: 41427, Start Num: 57

Candidate Starts for Swirley_65:

(Start: 57 @41678 has 35 MA's), (79, 41585), (80, 41570), (96, 41507), (102, 41462), (107, 41441),

Gene: SwissCheese_69 Start: 42912, Stop: 42619, Start Num: 40

Candidate Starts for SwissCheese_69:

(27, 42939), (Start: 40 @42912 has 190 MA's), (Start: 66 @42867 has 3 MA's), (70, 42837), (77, 42789), (84, 42747),

Gene: Switzer_67 Start: 44218, Stop: 43925, Start Num: 40

Candidate Starts for Switzer_67:

(Start: 40 @44218 has 190 MA's), (Start: 66 @44173 has 3 MA's), (70, 44143), (77, 44095), (84, 44053),

Gene: Switzerland_79 Start: 43464, Stop: 43186, Start Num: 49

Candidate Starts for Switzerland_79:

(24, 43524), (Start: 49 @43464 has 58 MA's), (74, 43386), (79, 43347), (84, 43314), (93, 43284), (94, 43281), (98, 43260), (103, 43227),

Gene: Swole_65 Start: 42487, Stop: 42194, Start Num: 40

Candidate Starts for Swole_65:

(27, 42514), (Start: 40 @42487 has 190 MA's), (Start: 66 @42442 has 3 MA's), (70, 42412), (77, 42364), (84, 42322),

Gene: SydNat_65 Start: 41870, Stop: 41619, Start Num: 57

Candidate Starts for SydNat_65:

(Start: 57 @41870 has 35 MA's), (Start: 64 @41858 has 2 MA's), (77, 41786), (79, 41777), (80, 41762), (96, 41699), (102, 41654), (107, 41633), (111, 41627),

Gene: Target_69 Start: 42804, Stop: 42511, Start Num: 40

Candidate Starts for Target_69:

(Start: 40 @42804 has 190 MA's), (Start: 66 @42759 has 3 MA's), (70, 42729), (77, 42681), (84, 42639),

Gene: TarsusIV_68 Start: 43024, Stop: 42785, Start Num: 67

Candidate Starts for TarsusIV_68:

(Start: 45 @43063 has 8 MA's), (Start: 67 @43024 has 64 MA's), (73, 42994), (79, 42949), (84, 42916), (94, 42883), (96, 42874), (98, 42862), (110, 42802),

Gene: Tarynearal_64 Start: 41514, Stop: 41263, Start Num: 57

Candidate Starts for Tarynearal_64:

(Start: 57 @41514 has 35 MA's), (79, 41421), (80, 41406), (96, 41343), (102, 41298), (107, 41277), (111, 41271),

Gene: Tasp14_69 Start: 44447, Stop: 44154, Start Num: 40

Candidate Starts for Tasp14_69:

(Start: 40 @44447 has 190 MA's), (Start: 66 @44402 has 3 MA's), (70, 44372), (77, 44324), (84, 44282),

Gene: Teodoridan_65 Start: 41810, Stop: 41517, Start Num: 40

Candidate Starts for Teodoridan_65:

(Start: 40 @41810 has 190 MA's), (Start: 66 @41765 has 3 MA's), (70, 41735), (77, 41687), (84, 41645),

Gene: Theia_64 Start: 41988, Stop: 41749, Start Num: 64

Candidate Starts for Theia_64:

(Start: 57 @42000 has 35 MA's), (Start: 64 @41988 has 2 MA's), (77, 41916), (79, 41907), (80, 41892), (96, 41829), (102, 41784), (107, 41763),

Gene: TheloniousMonk_70 Start: 45181, Stop: 44888, Start Num: 40

Candidate Starts for TheloniousMonk_70:

(27, 45208), (Start: 40 @45181 has 190 MA's), (Start: 66 @45136 has 3 MA's), (70, 45106), (77, 45058), (84, 45016),

Gene: Thor_65 Start: 41931, Stop: 41638, Start Num: 40

Candidate Starts for Thor_65:

(27, 41958), (Start: 40 @41931 has 190 MA's), (Start: 66 @41886 has 3 MA's), (77, 41808), (84, 41766),

Gene: Tiger_65 Start: 41442, Stop: 41191, Start Num: 57

Candidate Starts for Tiger_65:

(Start: 57 @41442 has 35 MA's), (79, 41349), (80, 41334), (96, 41271), (102, 41226), (107, 41205), (111, 41199),

Gene: Timothy_69 Start: 41551, Stop: 41285, Start Num: 46

Candidate Starts for Timothy_69:

(Start: 46 @41551 has 26 MA's), (78, 41458), (84, 41419), (94, 41386), (96, 41377), (98, 41365), (102, 41332),

Gene: Timshel_68 Start: 45505, Stop: 45218, Start Num: 42

Candidate Starts for Timshel_68:

(15, 45658), (Start: 22 @45583 has 1 MA's), (29, 45550), (Start: 42 @45505 has 1 MA's), (Start: 72 @45427 has 1 MA's), (77, 45388), (79, 45379), (88, 45331), (90, 45319), (94, 45313), (98, 45292), (106, 45241), (113, 45223),

Gene: TipsytheTRex_70 Start: 42600, Stop: 42361, Start Num: 67

Candidate Starts for TipsytheTRex_70:

(Start: 67 @42600 has 64 MA's), (76, 42558), (79, 42525), (82, 42498), (84, 42492), (94, 42459), (96, 42450), (98, 42438), (106, 42387), (112, 42369),

Gene: Toaka_73 Start: 42844, Stop: 42566, Start Num: 45

Candidate Starts for Toaka_73:

(Start: 45 @42844 has 8 MA's), (78, 42739), (98, 42646),

Gene: Tomathan_74 Start: 43834, Stop: 43601, Start Num: 49

Candidate Starts for Tomathan_74:

(Start: 49 @43834 has 58 MA's), (79, 43756), (84, 43723), (94, 43690), (98, 43669), (107, 43615),

Gene: ToneTone_70 Start: 41408, Stop: 41151, Start Num: 49

Candidate Starts for ToneTone_70:

(Start: 49 @41408 has 58 MA's), (Start: 56 @41399 has 1 MA's), (77, 41324), (79, 41315), (84, 41282), (93, 41252), (96, 41240),

Gene: Topgun_63 Start: 41557, Stop: 41264, Start Num: 40

Candidate Starts for Topgun_63:

(27, 41584), (Start: 40 @41557 has 190 MA's), (Start: 66 @41512 has 3 MA's), (70, 41482), (77, 41434), (84, 41392),

Gene: Tote_62 Start: 39754, Stop: 39461, Start Num: 40

Candidate Starts for Tote_62:

(27, 39781), (Start: 40 @39754 has 190 MA's), (Start: 66 @39709 has 3 MA's), (70, 39679), (77, 39631), (84, 39589),

Gene: Traft412_69 Start: 43542, Stop: 43249, Start Num: 40

Candidate Starts for Traft412_69:

(Start: 40 @43542 has 190 MA's), (Start: 66 @43497 has 3 MA's), (70, 43467), (77, 43419), (84, 43377),

Gene: Treddle_66 Start: 43796, Stop: 43503, Start Num: 40

Candidate Starts for Treddle_66:

(27, 43823), (Start: 40 @43796 has 190 MA's), (Start: 66 @43751 has 3 MA's), (70, 43721), (73, 43709), (77, 43673), (84, 43631),

Gene: Tripl3t_70 Start: 45279, Stop: 44986, Start Num: 40

Candidate Starts for Tripl3t_70:

(Start: 40 @45279 has 190 MA's), (Start: 66 @45234 has 3 MA's), (70, 45204), (73, 45192), (77, 45156), (84, 45114),

Gene: Trixie_69 Start: 43058, Stop: 42813, Start Num: 62

Candidate Starts for Trixie_69:

(Start: 58 @43064 has 1 MA's), (Start: 62 @43058 has 18 MA's), (Start: 72 @43025 has 1 MA's), (79, 42977), (84, 42944), (94, 42911), (96, 42902), (98, 42890), (106, 42839),

Gene: Trooper_70 Start: 42983, Stop: 42744, Start Num: 67

Candidate Starts for Trooper_70:

(Start: 45 @43022 has 8 MA's), (Start: 67 @42983 has 64 MA's), (79, 42908), (84, 42875), (94, 42842), (96, 42833), (110, 42761),

Gene: Trouble_66 Start: 42897, Stop: 42604, Start Num: 40

Candidate Starts for Trouble_66:

(Start: 40 @42897 has 190 MA's), (Start: 66 @42852 has 3 MA's), (70, 42822), (77, 42774), (84, 42732),

Gene: Tubs_73 Start: 42568, Stop: 42290, Start Num: 48

Candidate Starts for Tubs_73:

(Start: 48 @42568 has 23 MA's), (78, 42460), (87, 42406), (89, 42397), (98, 42367),

Gene: Tucker_73 Start: 41611, Stop: 41354, Start Num: 49

Candidate Starts for Tucker_73:

(Start: 49 @41611 has 58 MA's), (Start: 56 @41602 has 1 MA's), (77, 41527), (79, 41518), (84, 41485), (93, 41455), (96, 41443),

Gene: Turbido_71 Start: 43267, Stop: 43028, Start Num: 67

Candidate Starts for Turbido_71:

(Start: 45 @43306 has 8 MA's), (Start: 67 @43267 has 64 MA's), (79, 43192), (84, 43159), (94, 43126), (96, 43117), (98, 43105),

Gene: Turj99_64 Start: 43466, Stop: 43173, Start Num: 40

Candidate Starts for Turj99_64:

(27, 43493), (Start: 40 @43466 has 190 MA's), (70, 43391), (77, 43343), (84, 43301),

Gene: TwoPeat_65 Start: 43318, Stop: 43025, Start Num: 40

Candidate Starts for TwoPeat_65:

(27, 43345), (Start: 40 @43318 has 190 MA's), (Start: 66 @43273 has 3 MA's), (70, 43243), (77, 43195), (84, 43153),

Gene: U2_62 Start: 43288, Stop: 42995, Start Num: 40

Candidate Starts for U2_62:

(27, 43315), (Start: 40 @43288 has 190 MA's), (Start: 66 @43243 has 3 MA's), (70, 43213), (77, 43165), (84, 43123),

Gene: Ugenie5_68 Start: 42856, Stop: 42578, Start Num: 48

Candidate Starts for Ugenie5_68:

(Start: 48 @42856 has 23 MA's), (78, 42748), (87, 42694), (89, 42685), (98, 42655),

Gene: UnionJack_69 Start: 41951, Stop: 41700, Start Num: 57

Candidate Starts for UnionJack_69:

(Start: 57 @41951 has 35 MA's), (79, 41858), (80, 41843), (96, 41780), (102, 41735), (107, 41714), (111, 41708),

Gene: Updawg_71 Start: 42915, Stop: 42676, Start Num: 67

Candidate Starts for Updawg_71:

(Start: 67 @42915 has 64 MA's), (Start: 72 @42888 has 1 MA's), (73, 42885), (79, 42840), (84, 42807), (94, 42774), (96, 42765), (98, 42753),

Gene: VA6_70 Start: 42966, Stop: 42727, Start Num: 67

Candidate Starts for VA6_70:

(Start: 45 @43005 has 8 MA's), (Start: 67 @42966 has 64 MA's), (Start: 72 @42939 has 1 MA's), (79, 42891), (84, 42858), (94, 42825), (96, 42816), (98, 42804), (109, 42747),

Gene: VC3_73 Start: 43176, Stop: 42916, Start Num: 49

Candidate Starts for VC3_73:

(Start: 49 @43176 has 58 MA's), (79, 43071), (84, 43038), (94, 43005), (98, 42984), (107, 42930), (109, 42927),

Gene: Vanisoa_70 Start: 43200, Stop: 42919, Start Num: 46

Candidate Starts for Vanisoa_70:

(Start: 46 @43200 has 26 MA's), (84, 43059), (98, 43005),

Gene: Violet_63 Start: 44154, Stop: 43861, Start Num: 40

Candidate Starts for Violet_63:

(27, 44181), (Start: 40 @44154 has 190 MA's), (Start: 66 @44109 has 3 MA's), (70, 44079), (77, 44031), (84, 43989),

Gene: VohminGhazi_71 Start: 41316, Stop: 41077, Start Num: 65

Candidate Starts for VohminGhazi_71:

(Start: 65 @41316 has 8 MA's), (79, 41241), (84, 41208), (94, 41175), (96, 41166),

Gene: Waits_80 Start: 43700, Stop: 43422, Start Num: 49

Candidate Starts for Waits_80:

(23, 43775), (Start: 49 @43700 has 58 MA's), (74, 43622), (79, 43583), (84, 43550), (93, 43520), (94, 43517), (98, 43496), (103, 43463),

Gene: Watermelon_65 Start: 41890, Stop: 41597, Start Num: 40

Candidate Starts for Watermelon_65:

(27, 41917), (Start: 40 @41890 has 190 MA's), (Start: 66 @41845 has 3 MA's), (70, 41815), (77, 41767), (84, 41725),

Gene: WeiHuaDA_71 Start: 43855, Stop: 43616, Start Num: 67

Candidate Starts for WeiHuaDA_71:

(Start: 45 @43894 has 8 MA's), (Start: 67 @43855 has 64 MA's), (79, 43780), (84, 43747), (94, 43714), (96, 43705), (98, 43693), (106, 43642),

Gene: Whabigail7_71 Start: 43267, Stop: 43028, Start Num: 67

Candidate Starts for Whabigail7_71:

(Start: 45 @43306 has 8 MA's), (Start: 67 @43267 has 64 MA's), (79, 43192), (84, 43159), (94, 43126), (96, 43117), (98, 43105),

Gene: Wheeler_68 Start: 43157, Stop: 42864, Start Num: 40

Candidate Starts for Wheeler_68:

(27, 43184), (Start: 40 @43157 has 190 MA's), (Start: 66 @43112 has 3 MA's), (70, 43082), (73, 43070), (77, 43034), (84, 42992),

Gene: WideWale_71 Start: 42915, Stop: 42676, Start Num: 67

Candidate Starts for WideWale_71:

(Start: 67 @42915 has 64 MA's), (Start: 72 @42888 has 1 MA's), (73, 42885), (79, 42840), (84, 42807), (94, 42774), (96, 42765), (98, 42753),

Gene: Wiks_72 Start: 41479, Stop: 41222, Start Num: 49

Candidate Starts for Wiks_72:

(Start: 49 @41479 has 58 MA's), (Start: 56 @41470 has 1 MA's), (77, 41395), (79, 41386), (84, 41353), (93, 41323), (96, 41311),

Gene: Wilkins_64 Start: 41487, Stop: 41194, Start Num: 40

Candidate Starts for Wilkins_64:

(27, 41514), (Start: 40 @41487 has 190 MA's), (Start: 66 @41442 has 3 MA's), (70, 41412), (77, 41364), (84, 41322),

Gene: WunderPhul_73 Start: 41477, Stop: 41220, Start Num: 49

Candidate Starts for WunderPhul_73:

(Start: 49 @41477 has 58 MA's), (Start: 56 @41468 has 1 MA's), (77, 41393), (79, 41384), (84, 41351), (93, 41321), (96, 41309),

Gene: XianYue_66 Start: 42239, Stop: 41988, Start Num: 58

Candidate Starts for XianYue_66:

(Start: 40 @42275 has 190 MA's), (Start: 58 @42239 has 1 MA's), (73, 42197), (79, 42152), (84, 42119), (94, 42086), (96, 42077), (98, 42065),

Gene: Yecey3_74 Start: 42420, Stop: 42151, Start Num: 53

Candidate Starts for Yecey3_74:

(Start: 53 @42420 has 1 MA's), (77, 42324), (78, 42321), (87, 42267), (89, 42258), (98, 42228),

Gene: Yokurt_72 Start: 41479, Stop: 41222, Start Num: 49

Candidate Starts for Yokurt_72:

(Start: 49 @41479 has 58 MA's), (Start: 56 @41470 has 1 MA's), (77, 41395), (79, 41386), (84, 41353), (93, 41323), (96, 41311),

Gene: Zaka_73 Start: 41479, Stop: 41222, Start Num: 49

Candidate Starts for Zaka_73:

(Start: 49 @41479 has 58 MA's), (Start: 56 @41470 has 1 MA's), (77, 41395), (79, 41386), (84, 41353), (93, 41323), (96, 41311),

Gene: Zeeculate_65 Start: 43127, Stop: 42834, Start Num: 40

Candidate Starts for Zeeculate_65:

(Start: 40 @43127 has 190 MA's), (Start: 66 @43082 has 3 MA's), (70, 43052), (77, 43004), (84, 42962), (106, 42857),

Gene: Zephyr_67 Start: 42228, Stop: 41935, Start Num: 40

Candidate Starts for Zephyr_67:

(27, 42255), (Start: 40 @42228 has 190 MA's), (Start: 66 @42183 has 3 MA's), (70, 42153), (77, 42105), (84, 42063),

Gene: Zeuska_71 Start: 45391, Stop: 45098, Start Num: 40

Candidate Starts for Zeuska_71:

(Start: 40 @45391 has 190 MA's), (Start: 66 @45346 has 3 MA's), (70, 45316), (77, 45268), (84, 45226),

Gene: Zimmer_68 Start: 43433, Stop: 43122, Start Num: 36

Candidate Starts for Zimmer_68:

(Start: 35 @43436 has 1 MA's), (Start: 36 @43433 has 3 MA's), (Start: 61 @43385 has 1 MA's), (Start: 72 @43334 has 1 MA's), (77, 43295), (79, 43286), (84, 43253), (91, 43226), (106, 43148),

Gene: Zolita_64 Start: 41874, Stop: 41623, Start Num: 57

Candidate Starts for Zolita_64:

(Start: 57 @41874 has 35 MA's), (Start: 64 @41862 has 2 MA's), (77, 41790), (79, 41781), (80, 41766), (96, 41703), (102, 41658), (107, 41637), (111, 41631),

Gene: Zulu_74 Start: 41857, Stop: 41600, Start Num: 49

Candidate Starts for Zulu_74:

(Start: 49 @41857 has 58 MA's), (Start: 56 @41848 has 1 MA's), (77, 41773), (79, 41764), (84, 41731), (93, 41701), (96, 41689),