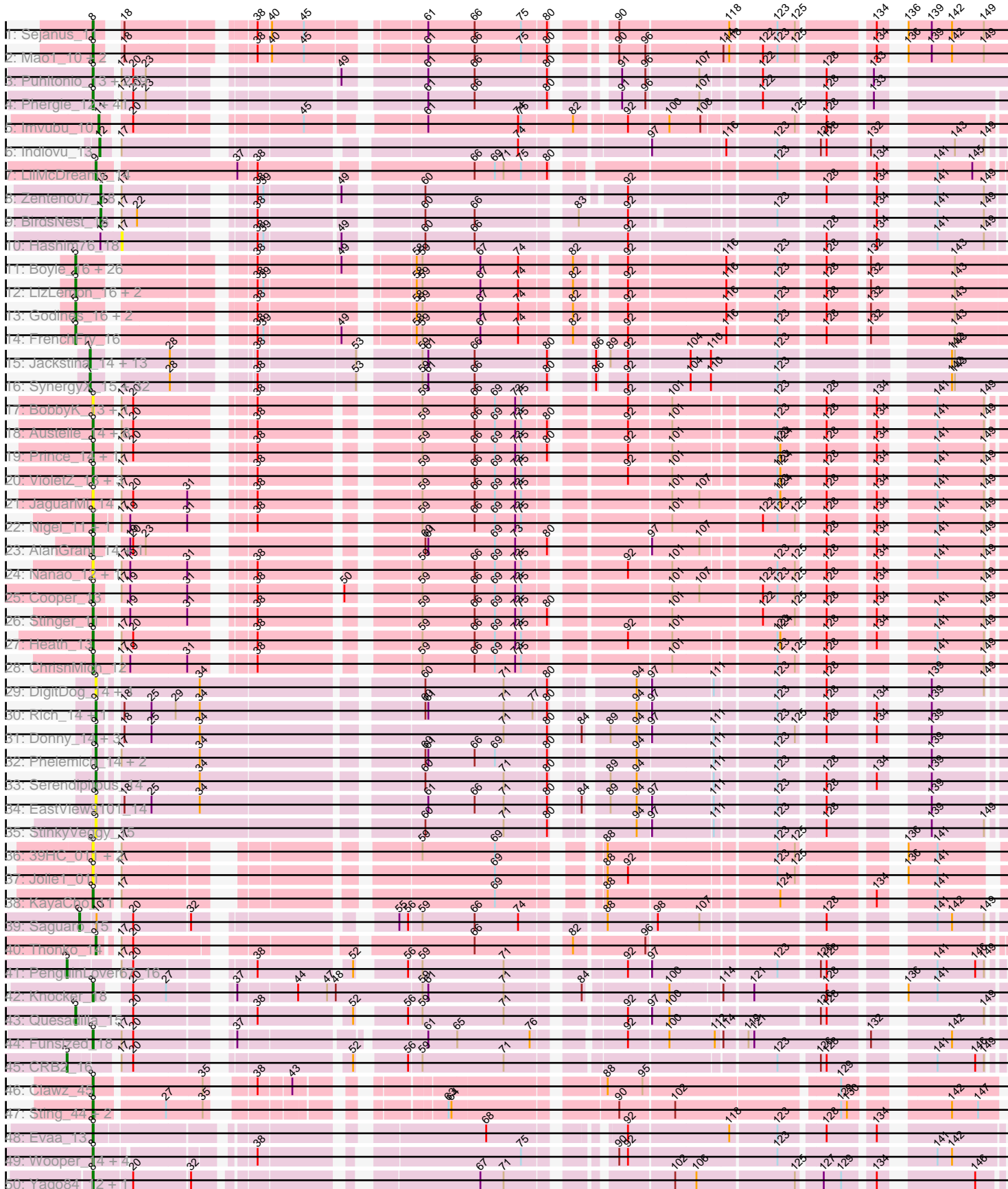
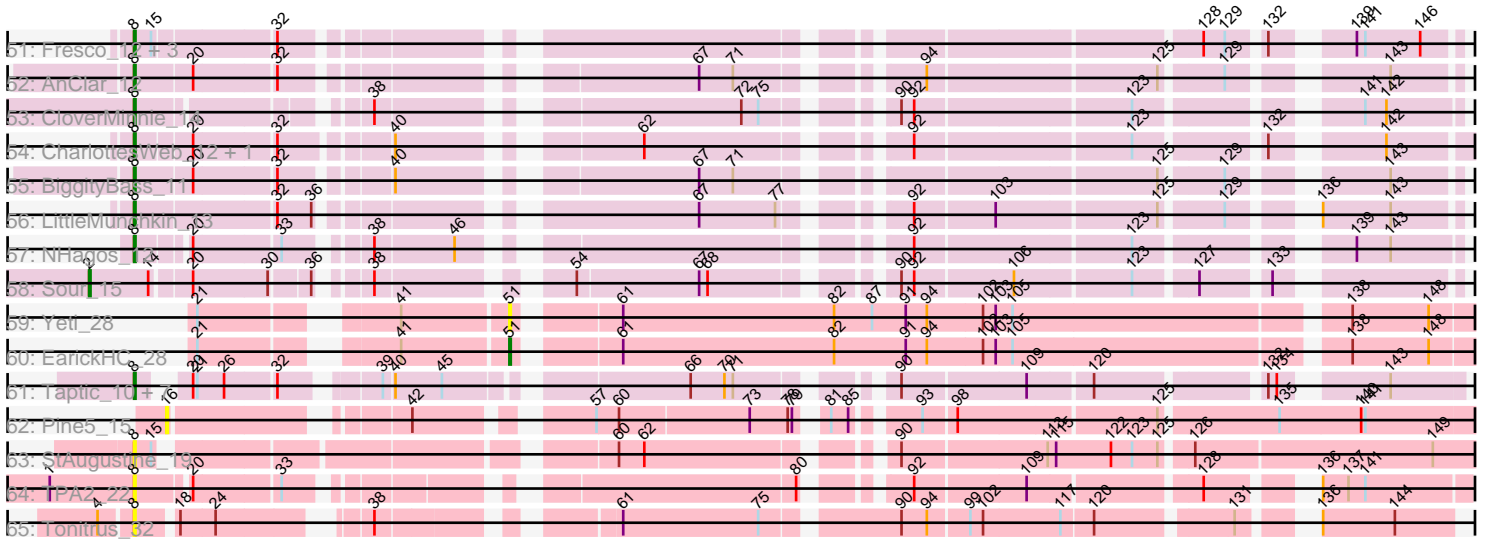


Pham 157479



Pham 157479



Note: Tracks are now grouped by subcluster and scaled. Switching in subcluster is indicated by changes in track color. Track scale is now set by default to display the region 30 bp upstream of start 1 to 30 bp downstream of the last possible start. If this default region is judged to be packed too tightly with annotated starts, the track will be further scaled to only show that region of the ORF with annotated starts. This action will be indicated by adding "Zoomed" to the title. For starts, yellow indicates the location of called starts comprised solely of Glimmer/GeneMark auto-annotations, green indicates the location of called starts with at least 1 manual gene annotation.

Pham 157479 Report

This analysis was run 04/13/24 on database version 558.

Pham number 157479 has 455 members, 59 are drafts.

Phages represented in each track:

- Track 1 : Sejanus_11
- Track 2 : Mao1_10, Dori_11, Mask_11
- Track 3 : Puhltonio_13, Soto_13, HSavage_13, TallGrassMM_13, Zaider_14, Simielle_12, HenryJackson_12, Gyarad_0013, Cornobble_12, Fringe_13, Numberten_13, Vaishali24_12, Carthage_12, Phamished_13, Doddsville_13, OliverWalter_13, Dione_12, OSmaximus_13, Yoshand_13, Etaye_13, Virgeve_12, Toni_12, Mcshane_12, Vivaldi_13, Plmatters_13, Melc17_13, Newman_13, Nacho_0013, JakeO_12, CheetO_13, Spartan300_13, Piglet_0012, Xavier_12, Squid_13, Morty_13, CamL_13, Daffy_13, Roscoe_14, Antonia_12, Mosaic_12, DelRivs_12, Serpentine_0013, Weher20_13, KlimbOn_13, BlueHusk_13, Hamish_13, Suffolk_13, Mikota_13, Rimu_12, Vista_13, ThreeOh3D2_13, Sophia_12, Grand2040_12, PhatLouie_13, Badfish_13, FugateOSU_12, Solosis_12, Mutante_12, Keitherie_13, Crownjwl_13, PG1_13, Aelin_12, Serendipity_13, DaddyDaniels_13, Inchworm_13, Placalicious_12, Dati_13, Haimas_13, DirtJuice_13, Oline_12, Orwigg_13, Jillium_12, Altwerkus_12, Nicole21_13, Surely_13, Chorkpop_13, Hetaeria_13, Slatt_13, Burr_12, KLucky39_13, Selr12_13, MrPhizzler_12, UncleHowie_13, Valjean_13, Virapocalypse_13, Pipsqueak_13, Childish_12, MiniBoss_13, Soile_13, Ricotta_13, Mulan_12, Prickles_13, Duggie_12, Iridoclysis_13, FluffyNinja_13, Schueller_12, Gophee_13, Gwilliam_13, Horchata_13, Maru_12, Mana_12, Magic8_13, Morgushi_13, Timmi_12, MitKao_13, Olak_12, Boehler_13, PinheadLarry_13, JangoPhett_13, SDcharge11_13, BlackStallion_13, Durga_13, Riggan_13, Bishoperium_12, UAch1_13, Mesh1_13, Mecca_12, AbsoluteMadLad_12, Fang_13, TomBombadil_13, Quisquilliae_13, Phipps_13, Craff_13, Kwadwo_12, Manad_12, PhrodoBaggins_12, Gareth_12, Kwksand96_12, JDog_12, Beaglebox_12, Robyn_12, Podrick_13, FriarPreacher_13, Cannibal_13, Bluephacebaby_12, Scoot17C_13, Lasso_13, LostAndPhound_12, Lopsy_12, Schadenfreude_12, Katniss_13, Tooj_13, Haleema_12, Freya_12, ProfessorX_13, Pacifista_14, Chaelin_12, AltPhacts_13, Orion_13, Lulwa_13, SassyCat97_12, Emiris_13, Charles1_13, Vortex_13, Cobra_13, Megatron_13, QueenBeane_13, Telesworld_12, Omniscient_13, LeeLot_13, Giraffe_13, Murdoc_13, KingTut_12, IsaacEli_13, Vaticameos_13, Potter_12, Kikipoo_13, Pops_13, Chunky_13, Held_13, Lego3393_13, Kimbrough_13, CampRoach_12, Dingo_13, Oosterbaan_13, Windsor_12, Roliet_13, Anderson_13, Harvey_13, Legolas_12, Tomlarah_13, Nyala_12, GeneCoco_13, Phareon_13, LemonSlice_13, Chah_13, Inverness_13, Hertubise_13, Sheila_13, Fozzie_12, Pherdinand_13, Jiminy_12, Zelda_13, Banjo_12, EmpTee_13, Samaymay_13, DonSanchon_12, Eugenia_13, Adriana_13, MRabcd_12, Thora_13, HighStump_12, LasagnaCat_13, Frankicide_13, Eremos_13,

Basato_14, Apizium_12, LuckyMarjie_12, Daka_13, Matalotodo_12, Dice_13, Cher_12, Buckeye_13, Trypo_13, Colbert_13, DoesntMatter_13, Brilliant_13, RedMaple_12, Skippy_13, Kahve_12, Usavi_13, Swiphy_13, LeiMonet_13, Squiggle_13, YouGoGlencoco_13, Cosmolli16_12, Megamind20_13, KingVeVeVe_13, Kloppinator_13, PhatCats2014_13

- Track 4 : Phergie_12, Struggle_12, JacAttac_13, Orfeu_12, Andre_13, Hocus_12, ABU_13, PhenghisKhan_12, ImtiyazSitla_12, PhrankReynolds_12, Roy17_13, Maskar_12, Labeouficaum_12, CharlieGBrown_12, BatteryCK_12, Swish_13, DuchessDung_12, Pinkman_12, Phleuron_12, Derpp_12, MichaelPhcott_12, Zonia_13, True_12, Sigman_13, MelsMeow_12, Wallhey_12, Waterdiva_13, Longacauda_12, Chute_12, Ashraf_12, Scrick_12, Lulumae_12, Olive_13, Kailash_13, Mag7_12, Lumine_12, Hartsy_12, TyrionL_12, Veritas_12, Coletti_12, Phunky_13, ShiVal_13
- Track 5 : Imvubu_10
- Track 6 : Indlovu_13
- Track 7 : LilMcDreamy_14
- Track 8 : Zenteno07_18
- Track 9 : BirdsNest_18
- Track 10 : Hashim76_18
- Track 11 : Boyle_16, Arbiter_16, Kheth_16, Ares_16, Eaglehorse_16, ItsyBitsy1_16, Lephleur_16, Calamitous_16, Blocker23_16, Phantasmagoria_16, TA17A_16, Rhinoforte_16, Faze9_16, Tinciduntolum_17, Lars_16, Kaleb_16, Tres_16, Brownie5_16, Rosebush_16, West99_16, Qyrzula_15, Opia_16, Allegro_16, Sabella_16, MasterPo_16, Bananafish_16, Hedgerow_16
- Track 12 : LizLemon_16, Laurie_16, Glass_16
- Track 13 : Godines_16, Holeinone_16, Coffee_16
- Track 14 : FrenchFry_16
- Track 15 : Jackstina_14, Yinz_15, Pipefish_15, Compostia_16, HarveySr_15, Briakila_15, Heathcliff_15, Daisy_15, Corofin_15, RomaT_15, Philly_14, LestyG_15, SlippinJimmy_15, Chandler_15
- Track 16 : SynergyX_15, GlenHope_16, RagingRooster_15, Bernardo_15, Casbah_14, Ben11_14, Neos5_15, Kamiyu_15, Kronus_14, Halfpint_14, Nozo_15, ChaChing_15, Gervas_15, Akoma_15, Yahalom_15, Rita1961_15, Morty007_15, Athena_16, Mortcellus_14, Marley1013_15, Baloo_15, OrangeOswald_15, Audrey_15, Phlyer_15, Tydolla_15, Abinghost_15, Gadget_16, Deenasa_15, Devonte_15, Obutu_15, MmasiCarm_15, Phayeta_15, Phaedrus_14
- Track 17 : BobbyK_13, Frederick_13
- Track 18 : Austelle_14, Zemanar_14, RawrgerThat_13, Hydro_13, Mithril_13, Lolalove_13, Hangman_13, Waleliano_13, BrownCNA_14
- Track 19 : Prince_14, Mudslide_13
- Track 20 : VioletZ_13, Fortunato_13, Apex_13, Magpie_13
- Track 21 : JaguarMi_14
- Track 22 : Nigel_11, JAMaL_13
- Track 23 : AlanGrant_14, Vincenzo_14
- Track 24 : Nanao_12, Poster_12
- Track 25 : Cooper_13
- Track 26 : Stinger_11
- Track 27 : Heath_13
- Track 28 : ChrisnMich_12
- Track 29 : DigitDog_14, Nangang_14
- Track 30 : Rich_14, Bae_14
- Track 31 : Donny_14, Suigeneris_14, SirJeffery_14, Acadian_14
- Track 32 : Phelemich_14, Mysterious_14, Reprobate_14

- Track 33 : Serendipitous_14
- Track 34 : EastView9101_14
- Track 35 : StinkyVeggy_15
- Track 36 : 39HC_011, 40BC_011, Hosp_09
- Track 37 : Jolie1_011
- Track 38 : KayaCho_11
- Track 39 : Saguaro_15
- Track 40 : Thonko_14
- Track 41 : PenguinLover67_16
- Track 42 : Knocker_18
- Track 43 : Quesadilla_15
- Track 44 : Funsized_18
- Track 45 : CRB2_16
- Track 46 : Clawz_45
- Track 47 : Sting_44, DonTron_45, Soos_41
- Track 48 : Evaa_13
- Track 49 : Wooper_14, CaiB_14, MakoManhole_14, MossRose_14, AnarQue_14
- Track 50 : Yago84_12, Sisko_12
- Track 51 : Fresco_12, Axumite_12, Shatter_12, Ligma_12
- Track 52 : AnClar_12
- Track 53 : CloverMinnie_14
- Track 54 : CharlottesWeb_12, Mariokart_12
- Track 55 : BiggityBass_11
- Track 56 : LittleMunchkin_13
- Track 57 : NHagos_12
- Track 58 : Sour_15
- Track 59 : Yeti_28
- Track 60 : EarickHC_28
- Track 61 : Taptic_10, Argie_11, D12_10, PR_10, Megabear_10, GodPhather_11, Jeon_10, Cepens_10
- Track 62 : Pine5_15
- Track 63 : StAugustine_19
- Track 64 : TPA2_22
- Track 65 : Tonitrus_32

Summary of Final Annotations (See graph section above for start numbers):

The start number called the most often in the published annotations is 8, it was called in 300 of the 396 non-draft genes in the pham.

Genes that call this "Most Annotated" start:

- 39HC_011, 40BC_011, ABU_13, AbsoluteMadLad_12, Adriana_13, Aelin_12, AlanGrant_14, AltPhacts_13, Altwerkus_12, AnClar_12, AnarQue_14, Anderson_13, Andre_13, Antonia_12, Apex_13, Apizium_12, Argie_11, Ashraf_12, Austelle_14, Axumite_12, Badfish_13, Banjo_12, Basato_14, BatteryCK_12, Beaglebox_12, BiggityBass_11, Bishoperium_12, BlackStallion_13, BlueHusk_13, Bluephacebaby_12, BobbyK_13, Boehler_13, Brilliant_13, BrownCNA_14, Buckeye_13, Burr_12, CaiB_14, CamL_13, CampRoach_12, Cannibal_13, Carthage_12, Cepens_10, Chaelin_12, Chah_13, Charles1_13, CharlieGBrown_12, CharlottesWeb_12, CheetO_13, Cher_12, Childish_12, Chorkpop_13,

ChrisnMich_12, Chunky_13, Chute_12, Clawz_45, CloverMinnie_14, Cobra_13, Colbert_13, Coletti_12, Cooper_13, Cornobble_12, Cosmolli16_12, Craff_13, Crownjwl_13, D12_10, DaddyDaniels_13, Daffy_13, Daka_13, Dati_13, DelRivs_12, Derpp_12, Dice_13, Dingo_13, Dione_12, DirtJuice_13, Doddsville_13, DoesntMatter_13, DonSanchon_12, DonTron_45, Dori_11, DuchessDung_12, Duggie_12, Durga_13, Emiris_13, EmpTee_13, Eremos_13, Etaye_13, Eugenia_13, Evaa_13, Fang_13, FluffyNinja_13, Fortunato_13, Fozzie_12, Frankicide_13, Frederick_13, Fresco_12, Freya_12, FriarPreacher_13, Fringe_13, FugateOSU_12, Funsized_18, Gareth_12, GeneCoco_13, Giraffe_13, GodPhather_11, Gophee_13, Grand2040_12, Gwilliam_13, Gyarad_0013, HSavage_13, Haimas_13, Haleema_12, Hamish_13, Hangman_13, Hartsy_12, Harvey_13, Heath_13, Held_13, HenryJackson_12, Hertubise_13, Hetaeria_13, HighStump_12, Hocus_12, Horchata_13, Hosp_09, Hydro_13, ImtiyazSitla_12, Inchworm_13, Inverness_13, Iridoclysis_13, IsaacEli_13, JAMaL_13, JDog_12, JacAttac_13, JaguarMi_14, JakeO_12, JangoPhett_13, Jeon_10, Jillium_12, Jiminy_12, Jolie1_011, KLucky39_13, Kahve_12, Kailash_13, Katniss_13, KayaCho_11, Keitherie_13, Kikipoo_13, Kimbrough_13, KingTut_12, KingVeVeVe_13, KlimbOn_13, Kloppinator_13, Knocker_18, Kwadwo_12, Kwksand96_12, Labeouficaum_12, LasagnaCat_13, Lasso_13, LeeLot_13, Lego3393_13, Legolas_12, LeiMonet_13, LemonSlice_13, Ligma_12, LittleMunchkin_13, Lolalove_13, Longacauda_12, Lopsy_12, LostAndPhound_12, LuckyMarjie_12, Lulumae_12, Lulwa_13, Lumine_12, MRabcd_12, Mag7_12, Magic8_13, Magpie_13, MakoManhole_14, Mana_12, Manad_12, Mao1_10, Mariokart_12, Maru_12, Mask_11, Maskar_12, Matalotodo_12, Mcshane_12, Mecca_12, Megabear_10, Megamind20_13, Megatron_13, Melc17_13, MelsMeow_12, Mesh1_13, MichaelPhcott_12, Mikota_13, MiniBoss_13, MitKao_13, Mithril_13, Morgushi_13, Morty_13, Mosaic_12, MossRose_14, MrPhizzler_12, Mudslide_13, Mulan_12, Murdoc_13, Mutante_12, NHagos_12, Nacho_0013, Nanao_12, Newman_13, Nicole21_13, Nigel_11, Numberben_13, Nyala_12, OSmaximus_13, Olak_12, Oline_12, Olive_13, OliverWalter_13, Omniscient_13, Oosterbaan_13, Orfeu_12, Orion_13, Orwigg_13, PG1_13, PR_10, Pacifista_14, Phamished_13, Phareon_13, PhatCats2014_13, PhatLouie_13, PhenghisKhan_12, Pherdinand_13, Phergie_12, Phipps_13, Phleuron_12, PhrankReynolds_12, PhrodoBaggins_12, Phunky_13, Piglet_0012, PinheadLarry_13, Pinkman_12, Pipsqueak_13, Placalicious_12, Plmatters_13, Podrick_13, Pops_13, Poster_12, Potter_12, Prickles_13, Prince_14, ProfessorX_13, Puhltonio_13, QueenBeane_13, Quisquilliae_13, RawrgerThat_13, RedMaple_12, Ricotta_13, Riggan_13, Rimu_12, Robyn_12, Roliet_13, Roscoe_14, Roy17_13, SDcharge11_13, Samaymay_13, SassyCat97_12, Schadenfreude_12, Schueller_12, Scoot17C_13, Scrick_12, Sejanus_11, Selr12_13, Serendipity_13, Serpentine_0013, Shatter_12, Sheila_13, ShiVal_13, Sigman_13, Simielle_12, Sisko_12, Skippy_13, Slatt_13, Soile_13, Solosis_12, Soos_41, Sophia_12, Soto_13, Spartan300_13, Squid_13, Squiggle_13, StAugustine_19, Sting_44, Stinger_11, Struggle_12, Suffolk_13, Surely_13, Swiphy_13, Swish_13, TPA2_22, TallGrassMM_13, Taptic_10, Telesworld_12, Thora_13, ThreeOh3D2_13, Timmi_12, TomBombadil_13, Tomlarah_13, Toni_12, Tonitrus_32, Tooj_13, True_12, Trypo_13, TyrionL_12, UAch1_13, UncleHowie_13, Usavi_13, Vaishali24_12, Valjean_13, Vaticameos_13, Veritas_12, Vincenzo_14, VioletZ_13, Virapocalypse_13, Virgeve_12, Vista_13, Vivaldi_13, Vortex_13, Waleliano_13, Wallhey_12, Waterdiva_13, Weher20_13, Windsor_12, Wooper_14, Xavier_12, Yago84_12, Yoshand_13, YouGoGlencoco_13, Zaider_14, Zelda_13, Zemanar_14, Zonia_13,

Genes that have the "Most Annotated" start but do not call it:

-

Genes that do not have the "Most Annotated" start:

- Abinghost_15, Acadian_14, Akoma_15, Allegro_16, Arbiter_16, Ares_16, Athena_16, Audrey_15, Bae_14, Baloo_15, Bananafish_16, Ben11_14, Bernardo_15, BirdsNest_18, Blocker23_16, Boyle_16, Briakila_15, Brownie5_16, CRB2_16, Calamitous_16, Casbah_14, ChaChing_15, Chandler_15, Coffee_16, Compostia_16, Corofin_15, Daisy_15, Deenasa_15, Devonte_15, DigitDog_14, Donny_14, Eaglehorse_16, EarickHC_28, EastView9101_14, Faze9_16, FrenchFry_16, Gadget_16, Gervas_15, Glass_16, GlenHope_16, Godines_16, Halfpint_14, HarveySr_15, Hashim76_18, Heathcliff_15, Hedgerow_16, Holeinone_16, Imvubu_10, Indlovu_13, ItsyBitsy1_16, Jackstina_14, Kaleb_16, Kamiyu_15, Kheth_16, Kronus_14, Lars_16, Laurie_16, Lephleur_16, LestyG_15, LilMcDreamy_14, LizLemon_16, Marley1013_15, MasterPo_16, MmasiCarm_15, Mortcellus_14, Morty007_15, Mysterious_14, Nangang_14, Neos5_15, Nozo_15, Obutu_15, Opia_16, OrangeOswald_15, PenguinLover67_16, Phaedrus_14, Phantasmagoria_16, Phayeta_15, Phelemich_14, Philly_14, Phlyer_15, Pine5_15, Pipefish_15, Quesadilla_15, Qyrzula_15, RagingRooster_15, Reprobate_14, Rhinoforte_16, Rich_14, Rita1961_15, RomaT_15, Rosebush_16, Sabella_16, Saguaro_15, Serendipitous_14, SirJeffery_14, SlippinJimmy_15, Sour_15, StinkyVeggy_15, Suigeneris_14, SynergyX_15, TA17A_16, Thonko_14, Tinciduntolum_17, Tres_16, Tydolla_15, West99_16, Yahalom_15, Yeti_28, Yinz_15, Zenteno07_18,

Summary by start number:

Start 2:

- Found in 1 of 455 (0.2%) of genes in pham
- Manual Annotations of this start: 1 of 396
- Called 100.0% of time when present
- Phage (with cluster) where this start called: Sour_15 (DR),

Start 3:

- Found in 2 of 455 (0.4%) of genes in pham
- Manual Annotations of this start: 2 of 396
- Called 100.0% of time when present
- Phage (with cluster) where this start called: CRB2_16 (B9), PenguinLover67_16 (B9),

Start 5:

- Found in 35 of 455 (7.7%) of genes in pham
- Manual Annotations of this start: 33 of 396
- Called 100.0% of time when present
- Phage (with cluster) where this start called: Allegro_16 (B2), Arbiter_16 (B2), Ares_16 (B2), Bananafish_16 (B2), Blocker23_16 (B2), Boyle_16 (B2), Brownie5_16 (B2), Calamitous_16 (B2), Coffee_16 (B2), Eaglehorse_16 (B2), Faze9_16 (B2), FrenchFry_16 (B2), Glass_16 (B2), Godines_16 (B2), Hedgerow_16 (B2), Holeinone_16 (B2), ItsyBitsy1_16 (B2), Kaleb_16 (B2), Kheth_16 (B2), Lars_16 (B2), Laurie_16 (B2), Lephleur_16 (B2), LizLemon_16 (B2), MasterPo_16 (B2), Opia_16 (B2), Phantasmagoria_16 (B2), Quesadilla_15 (B9), Qyrzula_15 (B2), Rhinoforte_16 (B2), Rosebush_16 (B2), Sabella_16 (B2), TA17A_16 (B2), Tinciduntolum_17 (B2), Tres_16 (B2), West99_16 (B2),

Start 6:

- Found in 1 of 455 (0.2%) of genes in pham
- Manual Annotations of this start: 1 of 396
- Called 100.0% of time when present
- Phage (with cluster) where this start called: Saguaro_15 (B7),

Start 7:

- Found in 47 of 455 (10.3%) of genes in pham
- Manual Annotations of this start: 44 of 396
- Called 100.0% of time when present
- Phage (with cluster) where this start called: Abinghost_15 (B3), Akoma_15 (B3), Athena_16 (B3), Audrey_15 (B3), Baloo_15 (B3), Ben11_14 (B3), Bernardo_15 (B3), Briakila_15 (B3), Casbah_14 (B3), ChaChing_15 (B3), Chandler_15 (B3), Compostia_16 (B3), Corofin_15 (B3), Daisy_15 (B3), Deenasa_15 (B3), Devonte_15 (B3), Gadget_16 (B3), Gervas_15 (B3), GlenHope_16 (B3), Halfpint_14 (B3), HarveySr_15 (B3), Heathcliff_15 (B3), Jackstina_14 (B3), Kamiyu_15 (B3), Kronus_14 (B3), LestyG_15 (B3), Marley1013_15 (B3), MmasiCarm_15 (B3), Mortcellus_14 (B3), Morty007_15 (B3), Neos5_15 (B3), Nozo_15 (B3), Obutu_15 (B3), OrangeOswald_15 (B3), Phaedrus_14 (B3), Phayeta_15 (B3), Philly_14 (B3), Phlyer_15 (B3), Pipefish_15 (B3), RagingRooster_15 (B3), Rita1961_15 (B3), RomaT_15 (B3), SlippinJimmy_15 (B3), SynergyX_15 (B3), Tydolla_15 (B3), Yahalom_15 (B3), Yinz_15 (B3),

Start 8:

- Found in 345 of 455 (75.8%) of genes in pham
- Manual Annotations of this start: 300 of 396
- Called 100.0% of time when present
- Phage (with cluster) where this start called: 39HC_011 (B6), 40BC_011 (B6), ABU_13 (B1), AbsoluteMadLad_12 (B1), Adriana_13 (B1), Aelin_12 (B1), AlanGrant_14 (B4), AltPhacts_13 (B1), Altwerkus_12 (B1), AnClar_12 (DR), AnarQue_14 (DR), Anderson_13 (B1), Andre_13 (B1), Antonia_12 (B1), Apex_13 (B4), Apizium_12 (B1), Argie_11 (W), Ashraf_12 (B1), Austelle_14 (B4), Axumite_12 (DR), Badfish_13 (B1), Banjo_12 (B1), Basato_14 (B1), BatteryCK_12 (B1), Beaglebox_12 (B1), BiggityBass_11 (DR), Bishoperium_12 (B1), BlackStallion_13 (B1), BlueHusk_13 (B1), Bluephacebaby_12 (B1), BobbyK_13 (B4), Boehler_13 (B1), Brilliant_13 (B1), BrownCNA_14 (B4), Buckeye_13 (B1), Burr_12 (B1), CaiB_14 (DR), CamL_13 (B1), CampRoach_12 (B1), Cannibal_13 (B1), Carthage_12 (B1), Cepens_10 (W), Chaelin_12 (B1), Chah_13 (B1), Charles1_13 (B1), CharlieGBrown_12 (B1), CharlottesWeb_12 (DR), CheetO_13 (B1), Cher_12 (B1), Childish_12 (B1), Chorkpop_13 (B1), ChrisnMich_12 (B4), Chunky_13 (B1), Chute_12 (B1), Clawz_45 (CP), CloverMinnie_14 (DR), Cobra_13 (B1), Colbert_13 (B1), Coletti_12 (B1), Cooper_13 (B4), Cornobble_12 (B1), Cosmolli16_12 (B1), Craff_13 (B1), Crownjwl_13 (B1), D12_10 (W), DaddyDaniels_13 (B1), Daffy_13 (B1), Daka_13 (B1), Dati_13 (B1), DelRivs_12 (B1), Derpp_12 (B1), Dice_13 (B1), Dingo_13 (B1), Dione_12 (B1), DirtJuice_13 (B1), Doddsville_13 (B1), DoesntMatter_13 (B1), DonSanchon_12 (B1), DonTron_45 (CP), Dori_11 (AD), DuchessDung_12 (B1), Duggie_12 (B1), Durga_13 (B1), Emiris_13 (B1), EmpTee_13 (B1), Eremos_13 (B1), Etaye_13 (B1), Eugenia_13 (B1), Evaa_13 (DR), Fang_13 (B1), FluffyNinja_13 (B1), Fortunato_13 (B4), Fozzie_12 (B1), Frankicide_13 (B1), Frederick_13 (B4), Fresco_12 (DR), Freya_12 (B1), FriarPreacher_13 (B1), Fringe_13 (B1), FugateOSU_12 (B1), Funsized_18 (B9), Gareth_12 (B1), GeneCoco_13 (B1), Giraffe_13 (B1), GodPhather_11 (W), Gophee_13 (B1), Grand2040_12 (B1), Gwilliam_13 (B1), Gyrad_0013 (B1), HSavage_13 (B1), Haimas_13 (B1), Haleema_12 (B1), Hamish_13 (B1), Hangman_13 (B4), Hartsy_12

(B1), Harvey_13 (B1), Heath_13 (B4), Held_13 (B1), HenryJackson_12 (B1), Hertubise_13 (B1), Hetaeria_13 (B1), HighStump_12 (B1), Hocus_12 (B1), Horchata_13 (B1), Hosp_09 (B6), Hydro_13 (B4), ImtiyazSitla_12 (B1), Inchworm_13 (B1), Inverness_13 (B1), Iridoclysis_13 (B1), IsaacEli_13 (B1), JAMaL_13 (B4), JDog_12 (B1), JacAttac_13 (B1), JaguarMi_14 (B4), JakeO_12 (B1), JangoPhett_13 (B1), Jeon_10 (W), Jillium_12 (B1), Jiminy_12 (B1), Jolie1_011 (B6), KLucky39_13 (B1), Kahve_12 (B1), Kailash_13 (B1), Katniss_13 (B1), KayaCho_11 (B6), Keitherie_13 (B1), Kikipoo_13 (B1), Kimbrough_13 (B1), KingTut_12 (B1), KingVeVeVe_13 (B1), KlimbOn_13 (B1), Kloppinator_13 (B1), Knocker_18 (B9), Kwadwo_12 (B1), Kwksand96_12 (B1), Labeouficaum_12 (B1), LasagnaCat_13 (B1), Lasso_13 (B1), LeeLot_13 (B1), Lego3393_13 (B1), Legolas_12 (B1), LeiMonet_13 (B1), LemonSlice_13 (B1), Ligma_12 (DR), LittleMunchkin_13 (DR), Lolalove_13 (B4), Longacauda_12 (B1), Lopsy_12 (B1), LostAndPhound_12 (B1), LuckyMarjie_12 (B1), Lulumae_12 (B1), Lulwa_13 (B1), Lumine_12 (B1), MRabcd_12 (B1), Mag7_12 (B1), Magic8_13 (B1), Magpie_13 (B4), MakoManhole_14 (DR), Mana_12 (B1), Manad_12 (B1), Mao1_10 (AD), Mariokart_12 (DR), Maru_12 (B1), Mask_11 (AD), Maskar_12 (B1), Matalotodo_12 (B1), Mcshane_12 (B1), Mecca_12 (B1), Megabear_10 (W), Megamind20_13 (B1), Megatron_13 (B1), Melc17_13 (B1), MelsMeow_12 (B1), Mesh1_13 (B1), MichaelPhcott_12 (B1), Mikota_13 (B1), MiniBoss_13 (B1), MitKao_13 (B1), Mithril_13 (B4), Morgushi_13 (B1), Morty_13 (B1), Mosaic_12 (B1), MossRose_14 (DR), MrPhizzler_12 (B1), Mudslide_13 (B4), Mulan_12 (B1), Murdoc_13 (B1), Mutante_12 (B1), NHagos_12 (DR), Nacho_0013 (B1), Nanao_12 (B4), Newman_13 (B1), Nicole21_13 (B1), Nigel_11 (B4), Numberten_13 (B1), Nyala_12 (B1), OSmaximus_13 (B1), Olak_12 (B1), Oline_12 (B1), Olive_13 (B1), OliverWalter_13 (B1), Omniscient_13 (B1), Oosterbaan_13 (B1), Orfeu_12 (B1), Orion_13 (B1), Orwigg_13 (B1), PG1_13 (B1), PR_10 (W), Pacifista_14 (B1), Phamished_13 (B1), Phareon_13 (B1), PhatCats2014_13 (B1), PhatLouie_13 (B1), PhenghisKhan_12 (B1), Pherdinand_13 (B1), Phergie_12 (B1), Phipps_13 (B1), Phleuron_12 (B1), PhrankReynolds_12 (B1), PhrodoBaggins_12 (B1), Phunky_13 (B1), Piglet_0012 (B1), PinheadLarry_13 (B1), Pinkman_12 (B1), Pipsqueak_13 (B1), Placalicious_12 (B1), Plmatters_13 (B1), Podrick_13 (B1), Pops_13 (B1), Poster_12 (B4), Potter_12 (B1), Prickles_13 (B1), Prince_14 (B4), ProfessorX_13 (B1), Puhltonio_13 (B1), QueenBeane_13 (B1), Quisquilliae_13 (B1), RawrgerThat_13 (B4), RedMaple_12 (B1), Ricotta_13 (B1), Riggan_13 (B1), Rimu_12 (B1), Robyn_12 (B1), Roliet_13 (B1), Roscoe_14 (B1), Roy17_13 (B1), SDcharge11_13 (B1), Samaymay_13 (B1), SassyCat97_12 (B1), Schadenfreude_12 (B1), Schueller_12 (B1), Scoot17C_13 (B1), Scrick_12 (B1), Sejanus_11 (AD), Selr12_13 (B1), Serendipity_13 (B1), Serpentine_0013 (B1), Shatter_12 (DR), Sheila_13 (B1), ShiVal_13 (B1), Sigman_13 (B1), Simielle_12 (B1), Sisko_12 (DR), Skippy_13 (B1), Slatt_13 (B1), Soile_13 (B1), Solosis_12 (B1), Soos_41 (CP), Sophia_12 (B1), Soto_13 (B1), Spartan300_13 (B1), Squid_13 (B1), Squiggle_13 (B1), StAugustine_19 (singleton), Sting_44 (CP), Stinger_11 (B4), Struggle_12 (B1), Suffolk_13 (B1), Surely_13 (B1), Swiphy_13 (B1), Swish_13 (B1), TPA2_22 (singleton), TallGrassMM_13 (B1), Taptic_10 (W), Telesworld_12 (B1), Thora_13 (B1), ThreeOh3D2_13 (B1), Timmi_12 (B1), TomBombadil_13 (B1), Tomlarah_13 (B1), Toni_12 (B1), Tonitrus_32 (singleton), Tooj_13 (B1), True_12 (B1), Trypo_13 (B1), TyrionL_12 (B1), UAch1_13 (B1), UncleHowie_13 (B1), Usavi_13 (B1), Vaishali24_12 (B1), Valjean_13 (B1), Vaticameos_13 (B1), Veritas_12 (B1), Vincenzo_14 (B4), VioletZ_13 (B4), Virapocalypse_13 (B1), Virgeve_12 (B1), Vista_13 (B1), Vivaldi_13 (B1), Vortex_13 (B1), Waleliano_13 (B4), Wallhey_12 (B1), Waterdiva_13 (B1), Weher20_13 (B1), Windsor_12 (B1), Wooper_14 (DR), Xavier_12 (B1), Yago84_12 (DR), Yoshand_13 (B1), YouGoGlencoco_13 (B1), Zaider_14 (B1), Zelda_13 (B1), Zemanar_14 (B4), Zonia_13 (B1),

Start 9:

- Found in 16 of 455 (3.5%) of genes in pham
- Manual Annotations of this start: 10 of 396
- Called 100.0% of time when present
- Phage (with cluster) where this start called: Acadian_14 (B5), Bae_14 (B5), DigitDog_14 (B5), Donny_14 (B5), EastView9101_14 (B5), LilMcDreamy_14 (B12), Mysterious_14 (B5), Nangang_14 (B5), Phelemich_14 (B5), Reprobate_14 (B5), Rich_14 (B5), Serendipitous_14 (B5), SirJeffery_14 (B5), StinkyVeggy_15 (B5), Suigeneris_14 (B5), Thonko_14 (B8),

Start 11:

- Found in 1 of 455 (0.2%) of genes in pham
- Manual Annotations of this start: 1 of 396
- Called 100.0% of time when present
- Phage (with cluster) where this start called: Imvubu_10 (B10),

Start 12:

- Found in 1 of 455 (0.2%) of genes in pham
- Manual Annotations of this start: 1 of 396
- Called 100.0% of time when present
- Phage (with cluster) where this start called: Indlovu_13 (B11),

Start 13:

- Found in 3 of 455 (0.7%) of genes in pham
- Manual Annotations of this start: 2 of 396
- Called 66.7% of time when present
- Phage (with cluster) where this start called: BirdsNest_18 (B13), Zenteno07_18 (B13),

Start 16:

- Found in 1 of 455 (0.2%) of genes in pham
- No Manual Annotations of this start.
- Called 100.0% of time when present
- Phage (with cluster) where this start called: Pine5_15 (singleton),

Start 17:

- Found in 313 of 455 (68.8%) of genes in pham
- No Manual Annotations of this start.
- Called 0.3% of time when present
- Phage (with cluster) where this start called: Hashim76_18 (B13),

Start 51:

- Found in 2 of 455 (0.4%) of genes in pham
- Manual Annotations of this start: 1 of 396
- Called 100.0% of time when present
- Phage (with cluster) where this start called: EarickHC_28 (EC), Yeti_28 (EC),

Summary by clusters:

There are 19 clusters represented in this pham: singleton, W, B10, B8, B11, EC, B4, B5, B6, B7, B12, B13, B2, B3, AD, CP, DR, B9, B1,

Info for manual annotations of cluster AD:

- Start number 8 was manually annotated 3 times for cluster AD.

Info for manual annotations of cluster B1:

- Start number 8 was manually annotated 247 times for cluster B1.

Info for manual annotations of cluster B10:

- Start number 11 was manually annotated 1 time for cluster B10.

Info for manual annotations of cluster B11:

- Start number 12 was manually annotated 1 time for cluster B11.

Info for manual annotations of cluster B12:

- Start number 9 was manually annotated 1 time for cluster B12.

Info for manual annotations of cluster B13:

- Start number 13 was manually annotated 2 times for cluster B13.

Info for manual annotations of cluster B2:

- Start number 5 was manually annotated 32 times for cluster B2.

Info for manual annotations of cluster B3:

- Start number 7 was manually annotated 44 times for cluster B3.

Info for manual annotations of cluster B4:

- Start number 8 was manually annotated 22 times for cluster B4.

Info for manual annotations of cluster B5:

- Start number 9 was manually annotated 8 times for cluster B5.

Info for manual annotations of cluster B6:

- Start number 8 was manually annotated 1 time for cluster B6.

Info for manual annotations of cluster B7:

- Start number 6 was manually annotated 1 time for cluster B7.

Info for manual annotations of cluster B8:

- Start number 9 was manually annotated 1 time for cluster B8.

Info for manual annotations of cluster B9:

- Start number 3 was manually annotated 2 times for cluster B9.
- Start number 5 was manually annotated 1 time for cluster B9.
- Start number 8 was manually annotated 2 times for cluster B9.

Info for manual annotations of cluster CP:

- Start number 8 was manually annotated 2 times for cluster CP.

Info for manual annotations of cluster DR:

- Start number 2 was manually annotated 1 time for cluster DR.
- Start number 8 was manually annotated 15 times for cluster DR.

Info for manual annotations of cluster EC:

- Start number 51 was manually annotated 1 time for cluster EC.

Info for manual annotations of cluster W:

•Start number 8 was manually annotated 8 times for cluster W.

Gene Information:

Gene: 39HC_011 Start: 11832, Stop: 12599, Start Num: 8

Candidate Starts for 39HC_011:

(Start: 8 @11832 has 300 MA's), (17, 11853), (59, 12093), (69, 12168), (88, 12249), (123, 12408), (125, 12426), (136, 12504), (141, 12534),

Gene: 40BC_011 Start: 11832, Stop: 12599, Start Num: 8

Candidate Starts for 40BC_011:

(Start: 8 @11832 has 300 MA's), (17, 11853), (59, 12093), (69, 12168), (88, 12249), (123, 12408), (125, 12426), (136, 12504), (141, 12534),

Gene: ABU_13 Start: 11600, Stop: 12397, Start Num: 8

Candidate Starts for ABU_13:

(Start: 8 @11600 has 300 MA's), (17, 11621), (20, 11633), (23, 11645), (61, 11876), (66, 11924), (80, 11996), (91, 12041), (96, 12065), (107, 12116), (122, 12170), (128, 12227), (133, 12266),

Gene: Abinghost_15 Start: 13140, Stop: 13949, Start Num: 7

Candidate Starts for Abinghost_15:

(Start: 7 @13140 has 44 MA's), (28, 13203), (38, 13266), (53, 13362), (59, 13410), (61, 13416), (66, 13464), (80, 13536), (86, 13566), (92, 13587), (104, 13647), (110, 13668), (123, 13734), (142, 13875), (143, 13878),

Gene: AbsoluteMadLad_12 Start: 11598, Stop: 12401, Start Num: 8

Candidate Starts for AbsoluteMadLad_12:

(Start: 8 @11598 has 300 MA's), (17, 11619), (20, 11631), (23, 11643), (49, 11805), (61, 11874), (66, 11922), (80, 11994), (91, 12039), (96, 12063), (107, 12114), (122, 12168), (128, 12225), (133, 12264),

Gene: Acadian_14 Start: 13349, Stop: 14155, Start Num: 9

Candidate Starts for Acadian_14:

(Start: 9 @13349 has 10 MA's), (18, 13364), (25, 13391), (34, 13439), (71, 13724), (80, 13766), (84, 13784), (89, 13802), (94, 13829), (97, 13841), (111, 13901), (123, 13958), (125, 13976), (128, 14000), (134, 14042), (139, 14078),

Gene: Adriana_13 Start: 11602, Stop: 12399, Start Num: 8

Candidate Starts for Adriana_13:

(Start: 8 @11602 has 300 MA's), (17, 11623), (20, 11635), (23, 11647), (49, 11809), (61, 11878), (66, 11926), (80, 11998), (91, 12043), (96, 12067), (107, 12118), (122, 12172), (128, 12229), (133, 12268),

Gene: Aelin_12 Start: 11149, Stop: 11952, Start Num: 8

Candidate Starts for Aelin_12:

(Start: 8 @11149 has 300 MA's), (17, 11170), (20, 11182), (23, 11194), (49, 11356), (61, 11425), (66, 11473), (80, 11545), (91, 11590), (96, 11614), (107, 11665), (122, 11719), (128, 11776), (133, 11815),

Gene: Akoma_15 Start: 13140, Stop: 13949, Start Num: 7

Candidate Starts for Akoma_15:

(Start: 7 @13140 has 44 MA's), (28, 13203), (38, 13266), (53, 13362), (59, 13410), (61, 13416), (66, 13464), (80, 13536), (86, 13566), (92, 13587), (104, 13647), (110, 13668), (123, 13734), (142, 13875), (143, 13878),

Gene: AlanGrant_14 Start: 14119, Stop: 14907, Start Num: 8

Candidate Starts for AlanGrant_14:

(Start: 8 @14119 has 300 MA's), (19, 14140), (20, 14143), (23, 14155), (60, 14386), (61, 14389), (69, 14458), (73, 14479), (80, 14509), (97, 14593), (107, 14641), (128, 14752), (134, 14794), (141, 14836), (149, 14884),

Gene: Allegro_16 Start: 14535, Stop: 15353, Start Num: 5

Candidate Starts for Allegro_16:

(Start: 5 @14535 has 33 MA's), (38, 14679), (49, 14760), (58, 14814), (59, 14820), (67, 14880), (74, 14919), (82, 14958), (92, 14997), (116, 15093), (123, 15141), (128, 15183), (132, 15219), (143, 15285),

Gene: AltPhacts_13 Start: 11603, Stop: 12406, Start Num: 8

Candidate Starts for AltPhacts_13:

(Start: 8 @11603 has 300 MA's), (17, 11624), (20, 11636), (23, 11648), (49, 11810), (61, 11879), (66, 11927), (80, 11999), (91, 12044), (96, 12068), (107, 12119), (122, 12173), (128, 12230), (133, 12269),

Gene: Altwerkus_12 Start: 11309, Stop: 12112, Start Num: 8

Candidate Starts for Altwerkus_12:

(Start: 8 @11309 has 300 MA's), (17, 11330), (20, 11342), (23, 11354), (49, 11516), (61, 11585), (66, 11633), (80, 11705), (91, 11750), (96, 11774), (107, 11825), (122, 11879), (128, 11936), (133, 11975),

Gene: AnClar_12 Start: 12460, Stop: 13242, Start Num: 8

Candidate Starts for AnClar_12:

(Start: 8 @12460 has 300 MA's), (20, 12499), (32, 12553), (67, 12793), (71, 12817), (94, 12919), (125, 13072), (129, 13111), (143, 13198),

Gene: AnarQue_14 Start: 13126, Stop: 13899, Start Num: 8

Candidate Starts for AnarQue_14:

(Start: 8 @13126 has 300 MA's), (38, 13258), (75, 13489), (90, 13555), (92, 13564), (123, 13708), (141, 13834), (142, 13849),

Gene: Anderson_13 Start: 11605, Stop: 12402, Start Num: 8

Candidate Starts for Anderson_13:

(Start: 8 @11605 has 300 MA's), (17, 11626), (20, 11638), (23, 11650), (49, 11812), (61, 11881), (66, 11929), (80, 12001), (91, 12046), (96, 12070), (107, 12121), (122, 12175), (128, 12232), (133, 12271),

Gene: Andre_13 Start: 11603, Stop: 12400, Start Num: 8

Candidate Starts for Andre_13:

(Start: 8 @11603 has 300 MA's), (17, 11624), (20, 11636), (23, 11648), (61, 11879), (66, 11927), (80, 11999), (91, 12044), (96, 12068), (107, 12119), (122, 12173), (128, 12230), (133, 12269),

Gene: Antonia_12 Start: 11149, Stop: 11952, Start Num: 8

Candidate Starts for Antonia_12:

(Start: 8 @11149 has 300 MA's), (17, 11170), (20, 11182), (23, 11194), (49, 11356), (61, 11425), (66, 11473), (80, 11545), (91, 11590), (96, 11614), (107, 11665), (122, 11719), (128, 11776), (133, 11815),

Gene: Apex_13 Start: 13527, Stop: 14321, Start Num: 8

Candidate Starts for Apex_13:

(Start: 8 @13527 has 300 MA's), (17, 13548), (38, 13659), (59, 13797), (66, 13851), (69, 13872), (73, 13893), (75, 13899), (92, 13986), (101, 14028), (123, 14124), (124, 14127), (128, 14166), (134, 14208), (141, 14250), (149, 14298),

Gene: Apizium_12 Start: 11307, Stop: 12110, Start Num: 8

Candidate Starts for Apizium_12:

(Start: 8 @11307 has 300 MA's), (17, 11328), (20, 11340), (23, 11352), (49, 11514), (61, 11583), (66, 11631), (80, 11703), (91, 11748), (96, 11772), (107, 11823), (122, 11877), (128, 11934), (133, 11973),

Gene: Arbiter_16 Start: 14622, Stop: 15440, Start Num: 5

Candidate Starts for Arbiter_16:

(Start: 5 @14622 has 33 MA's), (38, 14766), (49, 14847), (58, 14901), (59, 14907), (67, 14967), (74, 15006), (82, 15045), (92, 15084), (116, 15180), (123, 15228), (128, 15270), (132, 15306), (143, 15372),

Gene: Ares_16 Start: 14535, Stop: 15353, Start Num: 5

Candidate Starts for Ares_16:

(Start: 5 @14535 has 33 MA's), (38, 14679), (49, 14760), (58, 14814), (59, 14820), (67, 14880), (74, 14919), (82, 14958), (92, 14997), (116, 15093), (123, 15141), (128, 15183), (132, 15219), (143, 15285),

Gene: Argie_11 Start: 12991, Stop: 13767, Start Num: 8

Candidate Starts for Argie_11:

(Start: 8 @12991 has 300 MA's), (20, 13012), (21, 13015), (26, 13033), (32, 13066), (39, 13120), (40, 13126), (45, 13159), (66, 13306), (70, 13330), (71, 13336), (90, 13420), (109, 13504), (120, 13546), (132, 13651), (134, 13657), (143, 13717),

Gene: Ashraf_12 Start: 11149, Stop: 11946, Start Num: 8

Candidate Starts for Ashraf_12:

(Start: 8 @11149 has 300 MA's), (17, 11170), (20, 11182), (23, 11194), (61, 11425), (66, 11473), (80, 11545), (91, 11590), (96, 11614), (107, 11665), (122, 11719), (128, 11776), (133, 11815),

Gene: Athena_16 Start: 13903, Stop: 14712, Start Num: 7

Candidate Starts for Athena_16:

(Start: 7 @13903 has 44 MA's), (28, 13966), (38, 14029), (53, 14125), (59, 14173), (61, 14179), (66, 14227), (80, 14299), (86, 14329), (92, 14350), (104, 14410), (110, 14431), (123, 14497), (142, 14638), (143, 14641),

Gene: Audrey_15 Start: 13140, Stop: 13949, Start Num: 7

Candidate Starts for Audrey_15:

(Start: 7 @13140 has 44 MA's), (28, 13203), (38, 13266), (53, 13362), (59, 13410), (61, 13416), (66, 13464), (80, 13536), (86, 13566), (92, 13587), (104, 13647), (110, 13668), (123, 13734), (142, 13875), (143, 13878),

Gene: Austelle_14 Start: 13980, Stop: 14774, Start Num: 8

Candidate Starts for Austelle_14:

(Start: 8 @13980 has 300 MA's), (17, 14001), (20, 14013), (38, 14112), (59, 14250), (66, 14304), (69, 14325), (73, 14346), (75, 14352), (80, 14376), (92, 14439), (101, 14481), (123, 14577), (128, 14619), (134, 14661), (141, 14703), (149, 14751),

Gene: Axumite_12 Start: 11636, Stop: 12418, Start Num: 8

Candidate Starts for Axumite_12:

(Start: 8 @11636 has 300 MA's), (15, 11648), (32, 11726), (128, 12272), (129, 12287), (132, 12308), (139, 12350), (141, 12356), (146, 12395),

Gene: Badfish_13 Start: 11602, Stop: 12405, Start Num: 8

Candidate Starts for Badfish_13:

(Start: 8 @11602 has 300 MA's), (17, 11623), (20, 11635), (23, 11647), (49, 11809), (61, 11878), (66, 11926), (80, 11998), (91, 12043), (96, 12067), (107, 12118), (122, 12172), (128, 12229), (133, 12268),

Gene: Bae_14 Start: 13351, Stop: 14157, Start Num: 9

Candidate Starts for Bae_14:

(Start: 9 @13351 has 10 MA's), (18, 13366), (25, 13393), (29, 13417), (34, 13441), (60, 13645), (61, 13648), (71, 13726), (77, 13756), (80, 13768), (94, 13831), (97, 13843), (123, 13960), (128, 14002), (134, 14044), (139, 14080),

Gene: Baloo_15 Start: 13140, Stop: 13949, Start Num: 7

Candidate Starts for Baloo_15:

(Start: 7 @13140 has 44 MA's), (28, 13203), (38, 13266), (53, 13362), (59, 13410), (61, 13416), (66, 13464), (80, 13536), (86, 13566), (92, 13587), (104, 13647), (110, 13668), (123, 13734), (142, 13875), (143, 13878),

Gene: Bananafish_16 Start: 14532, Stop: 15350, Start Num: 5

Candidate Starts for Bananafish_16:

(Start: 5 @14532 has 33 MA's), (38, 14676), (49, 14757), (58, 14811), (59, 14817), (67, 14877), (74, 14916), (82, 14955), (92, 14994), (116, 15090), (123, 15138), (128, 15180), (132, 15216), (143, 15282),

Gene: Banjo_12 Start: 11310, Stop: 12107, Start Num: 8

Candidate Starts for Banjo_12:

(Start: 8 @11310 has 300 MA's), (17, 11331), (20, 11343), (23, 11355), (49, 11517), (61, 11586), (66, 11634), (80, 11706), (91, 11751), (96, 11775), (107, 11826), (122, 11880), (128, 11937), (133, 11976),

Gene: Basato_14 Start: 11836, Stop: 12639, Start Num: 8

Candidate Starts for Basato_14:

(Start: 8 @11836 has 300 MA's), (17, 11857), (20, 11869), (23, 11881), (49, 12043), (61, 12112), (66, 12160), (80, 12232), (91, 12277), (96, 12301), (107, 12352), (122, 12406), (128, 12463), (133, 12502),

Gene: BatteryCK_12 Start: 11155, Stop: 11952, Start Num: 8

Candidate Starts for BatteryCK_12:

(Start: 8 @11155 has 300 MA's), (17, 11176), (20, 11188), (23, 11200), (61, 11431), (66, 11479), (80, 11551), (91, 11596), (96, 11620), (107, 11671), (122, 11725), (128, 11782), (133, 11821),

Gene: Beaglebox_12 Start: 11309, Stop: 12112, Start Num: 8

Candidate Starts for Beaglebox_12:

(Start: 8 @11309 has 300 MA's), (17, 11330), (20, 11342), (23, 11354), (49, 11516), (61, 11585), (66, 11633), (80, 11705), (91, 11750), (96, 11774), (107, 11825), (122, 11879), (128, 11936), (133, 11975),

Gene: Ben11_14 Start: 12964, Stop: 13773, Start Num: 7

Candidate Starts for Ben11_14:

(Start: 7 @12964 has 44 MA's), (28, 13027), (38, 13090), (53, 13186), (59, 13234), (61, 13240), (66, 13288), (80, 13360), (86, 13390), (92, 13411), (104, 13471), (110, 13492), (123, 13558), (142, 13699), (143, 13702),

Gene: Bernardo_15 Start: 13139, Stop: 13948, Start Num: 7

Candidate Starts for Bernardo_15:

(Start: 7 @13139 has 44 MA's), (28, 13202), (38, 13265), (53, 13361), (59, 13409), (61, 13415), (66, 13463), (80, 13535), (86, 13565), (92, 13586), (104, 13646), (110, 13667), (123, 13733), (142, 13874), (143, 13877),

Gene: BiggityBass_11 Start: 11443, Stop: 12225, Start Num: 8

Candidate Starts for BiggityBass_11:

(Start: 8 @11443 has 300 MA's), (20, 11482), (32, 11536), (40, 11599), (67, 11776), (71, 11800), (125, 12055), (129, 12094), (143, 12181),

Gene: BirdsNest_18 Start: 12456, Stop: 13232, Start Num: 13

Candidate Starts for BirdsNest_18:

(Start: 13 @12456 has 2 MA's), (17, 12468), (22, 12483), (38, 12576), (60, 12720), (66, 12771), (83, 12861), (92, 12912), (123, 13041), (134, 13125), (141, 13167), (149, 13215),

Gene: Bishoperium_12 Start: 11310, Stop: 12107, Start Num: 8

Candidate Starts for Bishoperium_12:

(Start: 8 @11310 has 300 MA's), (17, 11331), (20, 11343), (23, 11355), (49, 11517), (61, 11586), (66, 11634), (80, 11706), (91, 11751), (96, 11775), (107, 11826), (122, 11880), (128, 11937), (133, 11976),

Gene: BlackStallion_13 Start: 11600, Stop: 12403, Start Num: 8

Candidate Starts for BlackStallion_13:

(Start: 8 @11600 has 300 MA's), (17, 11621), (20, 11633), (23, 11645), (49, 11807), (61, 11876), (66, 11924), (80, 11996), (91, 12041), (96, 12065), (107, 12116), (122, 12170), (128, 12227), (133, 12266),

Gene: Blocker23_16 Start: 14652, Stop: 15470, Start Num: 5

Candidate Starts for Blocker23_16:

(Start: 5 @14652 has 33 MA's), (38, 14796), (49, 14877), (58, 14931), (59, 14937), (67, 14997), (74, 15036), (82, 15075), (92, 15114), (116, 15210), (123, 15258), (128, 15300), (132, 15336), (143, 15402),

Gene: BlueHusk_13 Start: 11599, Stop: 12402, Start Num: 8

Candidate Starts for BlueHusk_13:

(Start: 8 @11599 has 300 MA's), (17, 11620), (20, 11632), (23, 11644), (49, 11806), (61, 11875), (66, 11923), (80, 11995), (91, 12040), (96, 12064), (107, 12115), (122, 12169), (128, 12226), (133, 12265),

Gene: Bluephacebaby_12 Start: 11310, Stop: 12107, Start Num: 8

Candidate Starts for Bluephacebaby_12:

(Start: 8 @11310 has 300 MA's), (17, 11331), (20, 11343), (23, 11355), (49, 11517), (61, 11586), (66, 11634), (80, 11706), (91, 11751), (96, 11775), (107, 11826), (122, 11880), (128, 11937), (133, 11976),

Gene: BobbyK_13 Start: 13343, Stop: 14137, Start Num: 8

Candidate Starts for BobbyK_13:

(Start: 8 @13343 has 300 MA's), (17, 13364), (20, 13376), (38, 13475), (59, 13613), (66, 13667), (69, 13688), (73, 13709), (75, 13715), (92, 13802), (101, 13844), (123, 13940), (128, 13982), (134, 14024), (141, 14066), (149, 14114),

Gene: Boehler_13 Start: 11602, Stop: 12405, Start Num: 8

Candidate Starts for Boehler_13:

(Start: 8 @11602 has 300 MA's), (17, 11623), (20, 11635), (23, 11647), (49, 11809), (61, 11878), (66, 11926), (80, 11998), (91, 12043), (96, 12067), (107, 12118), (122, 12172), (128, 12229), (133, 12268),

Gene: Boyle_16 Start: 14653, Stop: 15471, Start Num: 5

Candidate Starts for Boyle_16:

(Start: 5 @14653 has 33 MA's), (38, 14797), (49, 14878), (58, 14932), (59, 14938), (67, 14998), (74, 15037), (82, 15076), (92, 15115), (116, 15211), (123, 15259), (128, 15301), (132, 15337), (143, 15403),

Gene: Briakila_15 Start: 13905, Stop: 14714, Start Num: 7

Candidate Starts for Briakila_15:

(Start: 7 @13905 has 44 MA's), (28, 13968), (38, 14031), (53, 14127), (59, 14175), (61, 14181), (66, 14229), (80, 14301), (86, 14331), (89, 14334), (92, 14352), (104, 14412), (110, 14433), (123, 14499), (142, 14640), (143, 14643),

Gene: Brilliant_13 Start: 11308, Stop: 12105, Start Num: 8

Candidate Starts for Brilliant_13:

(Start: 8 @11308 has 300 MA's), (17, 11329), (20, 11341), (23, 11353), (49, 11515), (61, 11584), (66, 11632), (80, 11704), (91, 11749), (96, 11773), (107, 11824), (122, 11878), (128, 11935), (133, 11974),

Gene: BrownCNA_14 Start: 13597, Stop: 14391, Start Num: 8

Candidate Starts for BrownCNA_14:

(Start: 8 @13597 has 300 MA's), (17, 13618), (20, 13630), (38, 13729), (59, 13867), (66, 13921), (69, 13942), (73, 13963), (75, 13969), (80, 13993), (92, 14056), (101, 14098), (123, 14194), (128, 14236), (134, 14278), (141, 14320), (149, 14368),

Gene: Brownie5_16 Start: 14652, Stop: 15470, Start Num: 5

Candidate Starts for Brownie5_16:

(Start: 5 @14652 has 33 MA's), (38, 14796), (49, 14877), (58, 14931), (59, 14937), (67, 14997), (74, 15036), (82, 15075), (92, 15114), (116, 15210), (123, 15258), (128, 15300), (132, 15336), (143, 15402),

Gene: Buckeye_13 Start: 11604, Stop: 12407, Start Num: 8

Candidate Starts for Buckeye_13:

(Start: 8 @11604 has 300 MA's), (17, 11625), (20, 11637), (23, 11649), (49, 11811), (61, 11880), (66, 11928), (80, 12000), (91, 12045), (96, 12069), (107, 12120), (122, 12174), (128, 12231), (133, 12270),

Gene: Burr_12 Start: 11310, Stop: 12107, Start Num: 8

Candidate Starts for Burr_12:

(Start: 8 @11310 has 300 MA's), (17, 11331), (20, 11343), (23, 11355), (49, 11517), (61, 11586), (66, 11634), (80, 11706), (91, 11751), (96, 11775), (107, 11826), (122, 11880), (128, 11937), (133, 11976),

Gene: CRB2_16 Start: 14223, Stop: 15020, Start Num: 3

Candidate Starts for CRB2_16:

(Start: 3 @14223 has 2 MA's), (17, 14262), (20, 14274), (52, 14457), (56, 14493), (59, 14505), (71, 14589), (123, 14829), (126, 14865), (128, 14871), (141, 14955), (146, 14994), (149, 15003),

Gene: CaiB_14 Start: 13114, Stop: 13887, Start Num: 8

Candidate Starts for CaiB_14:

(Start: 8 @13114 has 300 MA's), (38, 13246), (75, 13477), (90, 13543), (92, 13552), (123, 13696), (141, 13822), (142, 13837),

Gene: Calamitous_16 Start: 14532, Stop: 15350, Start Num: 5

Candidate Starts for Calamitous_16:

(Start: 5 @14532 has 33 MA's), (38, 14676), (49, 14757), (58, 14811), (59, 14817), (67, 14877), (74, 14916), (82, 14955), (92, 14994), (116, 15090), (123, 15138), (128, 15180), (132, 15216), (143, 15282),

Gene: CamL_13 Start: 11602, Stop: 12399, Start Num: 8

Candidate Starts for CamL_13:

(Start: 8 @11602 has 300 MA's), (17, 11623), (20, 11635), (23, 11647), (49, 11809), (61, 11878), (66, 11926), (80, 11998), (91, 12043), (96, 12067), (107, 12118), (122, 12172), (128, 12229), (133, 12268),

Gene: CampRoach_12 Start: 11599, Stop: 12396, Start Num: 8

Candidate Starts for CampRoach_12:

(Start: 8 @11599 has 300 MA's), (17, 11620), (20, 11632), (23, 11644), (49, 11806), (61, 11875), (66, 11923), (80, 11995), (91, 12040), (96, 12064), (107, 12115), (122, 12169), (128, 12226), (133, 12265),

Gene: Cannibal_13 Start: 11605, Stop: 12402, Start Num: 8

Candidate Starts for Cannibal_13:

(Start: 8 @11605 has 300 MA's), (17, 11626), (20, 11638), (23, 11650), (49, 11812), (61, 11881), (66, 11929), (80, 12001), (91, 12046), (96, 12070), (107, 12121), (122, 12175), (128, 12232), (133, 12271),

Gene: Carthage_12 Start: 11277, Stop: 12080, Start Num: 8

Candidate Starts for Carthage_12:

(Start: 8 @11277 has 300 MA's), (17, 11298), (20, 11310), (23, 11322), (49, 11484), (61, 11553), (66, 11601), (80, 11673), (91, 11718), (96, 11742), (107, 11793), (122, 11847), (128, 11904), (133, 11943),

Gene: Casbah_14 Start: 12992, Stop: 13801, Start Num: 7

Candidate Starts for Casbah_14:

(Start: 7 @12992 has 44 MA's), (28, 13055), (38, 13118), (53, 13214), (59, 13262), (61, 13268), (66, 13316), (80, 13388), (86, 13418), (92, 13439), (104, 13499), (110, 13520), (123, 13586), (142, 13727), (143, 13730),

Gene: Cepens_10 Start: 12730, Stop: 13506, Start Num: 8

Candidate Starts for Cepens_10:

(Start: 8 @12730 has 300 MA's), (20, 12751), (21, 12754), (26, 12772), (32, 12805), (39, 12859), (40, 12865), (45, 12898), (66, 13045), (70, 13069), (71, 13075), (90, 13159), (109, 13243), (120, 13285), (132, 13390), (134, 13396), (143, 13456),

Gene: ChaChing_15 Start: 13155, Stop: 13964, Start Num: 7

Candidate Starts for ChaChing_15:

(Start: 7 @13155 has 44 MA's), (28, 13218), (38, 13281), (53, 13377), (59, 13425), (61, 13431), (66, 13479), (80, 13551), (86, 13581), (92, 13602), (104, 13662), (110, 13683), (123, 13749), (142, 13890), (143, 13893),

Gene: Chaelin_12 Start: 11263, Stop: 12066, Start Num: 8

Candidate Starts for Chaelin_12:

(Start: 8 @11263 has 300 MA's), (17, 11284), (20, 11296), (23, 11308), (49, 11470), (61, 11539), (66, 11587), (80, 11659), (91, 11704), (96, 11728), (107, 11779), (122, 11833), (128, 11890), (133, 11929),

Gene: Chah_13 Start: 11603, Stop: 12406, Start Num: 8

Candidate Starts for Chah_13:

(Start: 8 @11603 has 300 MA's), (17, 11624), (20, 11636), (23, 11648), (49, 11810), (61, 11879), (66, 11927), (80, 11999), (91, 12044), (96, 12068), (107, 12119), (122, 12173), (128, 12230), (133, 12269),

Gene: Chandler_15 Start: 13914, Stop: 14723, Start Num: 7

Candidate Starts for Chandler_15:

(Start: 7 @13914 has 44 MA's), (28, 13977), (38, 14040), (53, 14136), (59, 14184), (61, 14190), (66, 14238), (80, 14310), (86, 14340), (89, 14343), (92, 14361), (104, 14421), (110, 14442), (123, 14508),

(142, 14649), (143, 14652),

Gene: Charles1_13 Start: 11602, Stop: 12399, Start Num: 8

Candidate Starts for Charles1_13:

(Start: 8 @11602 has 300 MA's), (17, 11623), (20, 11635), (23, 11647), (49, 11809), (61, 11878), (66, 11926), (80, 11998), (91, 12043), (96, 12067), (107, 12118), (122, 12172), (128, 12229), (133, 12268),

Gene: CharlieGBrown_12 Start: 11173, Stop: 11970, Start Num: 8

Candidate Starts for CharlieGBrown_12:

(Start: 8 @11173 has 300 MA's), (17, 11194), (20, 11206), (23, 11218), (61, 11449), (66, 11497), (80, 11569), (91, 11614), (96, 11638), (107, 11689), (122, 11743), (128, 11800), (133, 11839),

Gene: CharlottesWeb_12 Start: 11678, Stop: 12469, Start Num: 8

Candidate Starts for CharlottesWeb_12:

(Start: 8 @11678 has 300 MA's), (20, 11714), (32, 11768), (40, 11834), (62, 11972), (92, 12128), (123, 12272), (132, 12350), (142, 12413),

Gene: CheetO_13 Start: 11602, Stop: 12405, Start Num: 8

Candidate Starts for CheetO_13:

(Start: 8 @11602 has 300 MA's), (17, 11623), (20, 11635), (23, 11647), (49, 11809), (61, 11878), (66, 11926), (80, 11998), (91, 12043), (96, 12067), (107, 12118), (122, 12172), (128, 12229), (133, 12268),

Gene: Cher_12 Start: 11309, Stop: 12112, Start Num: 8

Candidate Starts for Cher_12:

(Start: 8 @11309 has 300 MA's), (17, 11330), (20, 11342), (23, 11354), (49, 11516), (61, 11585), (66, 11633), (80, 11705), (91, 11750), (96, 11774), (107, 11825), (122, 11879), (128, 11936), (133, 11975),

Gene: Childish_12 Start: 11309, Stop: 12112, Start Num: 8

Candidate Starts for Childish_12:

(Start: 8 @11309 has 300 MA's), (17, 11330), (20, 11342), (23, 11354), (49, 11516), (61, 11585), (66, 11633), (80, 11705), (91, 11750), (96, 11774), (107, 11825), (122, 11879), (128, 11936), (133, 11975),

Gene: Chorkpop_13 Start: 11309, Stop: 12112, Start Num: 8

Candidate Starts for Chorkpop_13:

(Start: 8 @11309 has 300 MA's), (17, 11330), (20, 11342), (23, 11354), (49, 11516), (61, 11585), (66, 11633), (80, 11705), (91, 11750), (96, 11774), (107, 11825), (122, 11879), (128, 11936), (133, 11975),

Gene: ChrisnMich_12 Start: 12252, Stop: 13046, Start Num: 8

Candidate Starts for ChrisnMich_12:

(Start: 8 @12252 has 300 MA's), (17, 12273), (19, 12282), (31, 12339), (38, 12384), (59, 12522), (66, 12576), (69, 12597), (73, 12618), (75, 12624), (101, 12753), (123, 12849), (125, 12867), (128, 12891), (141, 12975), (149, 13023),

Gene: Chunky_13 Start: 11602, Stop: 12405, Start Num: 8

Candidate Starts for Chunky_13:

(Start: 8 @11602 has 300 MA's), (17, 11623), (20, 11635), (23, 11647), (49, 11809), (61, 11878), (66, 11926), (80, 11998), (91, 12043), (96, 12067), (107, 12118), (122, 12172), (128, 12229), (133, 12268),

Gene: Chute_12 Start: 11617, Stop: 12414, Start Num: 8

Candidate Starts for Chute_12:

(Start: 8 @11617 has 300 MA's), (17, 11638), (20, 11650), (23, 11662), (61, 11893), (66, 11941), (80, 12013), (91, 12058), (96, 12082), (107, 12133), (122, 12187), (128, 12244), (133, 12283),

Gene: Clawz_45 Start: 24999, Stop: 25766, Start Num: 8
Candidate Starts for Clawz_45:
(Start: 8 @24999 has 300 MA's), (35, 25101), (38, 25131), (43, 25161), (88, 25413), (95, 25449), (129, 25635),

Gene: CloverMinnie_14 Start: 13114, Stop: 13887, Start Num: 8
Candidate Starts for CloverMinnie_14:
(Start: 8 @13114 has 300 MA's), (38, 13246), (72, 13465), (75, 13477), (90, 13543), (92, 13552), (123, 13696), (141, 13822), (142, 13837),

Gene: Cobra_13 Start: 11599, Stop: 12402, Start Num: 8
Candidate Starts for Cobra_13:
(Start: 8 @11599 has 300 MA's), (17, 11620), (20, 11632), (23, 11644), (49, 11806), (61, 11875), (66, 11923), (80, 11995), (91, 12040), (96, 12064), (107, 12115), (122, 12169), (128, 12226), (133, 12265),

Gene: Coffee_16 Start: 14649, Stop: 15467, Start Num: 5
Candidate Starts for Coffee_16:
(Start: 5 @14649 has 33 MA's), (38, 14793), (58, 14928), (59, 14934), (67, 14994), (74, 15033), (82, 15072), (92, 15111), (116, 15207), (123, 15255), (128, 15297), (132, 15333), (143, 15399),

Gene: Colbert_13 Start: 11599, Stop: 12402, Start Num: 8
Candidate Starts for Colbert_13:
(Start: 8 @11599 has 300 MA's), (17, 11620), (20, 11632), (23, 11644), (49, 11806), (61, 11875), (66, 11923), (80, 11995), (91, 12040), (96, 12064), (107, 12115), (122, 12169), (128, 12226), (133, 12265),

Gene: Coletti_12 Start: 11617, Stop: 12414, Start Num: 8
Candidate Starts for Coletti_12:
(Start: 8 @11617 has 300 MA's), (17, 11638), (20, 11650), (23, 11662), (61, 11893), (66, 11941), (80, 12013), (91, 12058), (96, 12082), (107, 12133), (122, 12187), (128, 12244), (133, 12283),

Gene: Compostia_16 Start: 13573, Stop: 14382, Start Num: 7
Candidate Starts for Compostia_16:
(Start: 7 @13573 has 44 MA's), (28, 13636), (38, 13699), (53, 13795), (59, 13843), (61, 13849), (66, 13897), (80, 13969), (86, 13999), (89, 14002), (92, 14020), (104, 14080), (110, 14101), (123, 14167), (142, 14308), (143, 14311),

Gene: Cooper_13 Start: 12350, Stop: 13141, Start Num: 8
Candidate Starts for Cooper_13:
(Start: 8 @12350 has 300 MA's), (17, 12362), (19, 12371), (31, 12428), (38, 12473), (50, 12551), (59, 12611), (66, 12665), (69, 12686), (73, 12707), (75, 12713), (101, 12842), (107, 12869), (122, 12929), (123, 12944), (125, 12962), (128, 12986), (134, 13028), (149, 13118),

Gene: Cornobble_12 Start: 11150, Stop: 11953, Start Num: 8
Candidate Starts for Cornobble_12:
(Start: 8 @11150 has 300 MA's), (17, 11171), (20, 11183), (23, 11195), (49, 11357), (61, 11426), (66, 11474), (80, 11546), (91, 11591), (96, 11615), (107, 11666), (122, 11720), (128, 11777), (133, 11816),

Gene: Corofin_15 Start: 13165, Stop: 13974, Start Num: 7
Candidate Starts for Corofin_15:
(Start: 7 @13165 has 44 MA's), (28, 13228), (38, 13291), (53, 13387), (59, 13435), (61, 13441), (66, 13489), (80, 13561), (86, 13591), (89, 13594), (92, 13612), (104, 13672), (110, 13693), (123, 13759), (142, 13900), (143, 13903),

Gene: Cosmolli16_12 Start: 11307, Stop: 12110, Start Num: 8

Candidate Starts for Cosmolli16_12:

(Start: 8 @11307 has 300 MA's), (17, 11328), (20, 11340), (23, 11352), (49, 11514), (61, 11583), (66, 11631), (80, 11703), (91, 11748), (96, 11772), (107, 11823), (122, 11877), (128, 11934), (133, 11973),

Gene: Craff_13 Start: 11602, Stop: 12405, Start Num: 8

Candidate Starts for Craff_13:

(Start: 8 @11602 has 300 MA's), (17, 11623), (20, 11635), (23, 11647), (49, 11809), (61, 11878), (66, 11926), (80, 11998), (91, 12043), (96, 12067), (107, 12118), (122, 12172), (128, 12229), (133, 12268),

Gene: Crownjwl_13 Start: 11387, Stop: 12190, Start Num: 8

Candidate Starts for Crownjwl_13:

(Start: 8 @11387 has 300 MA's), (17, 11408), (20, 11420), (23, 11432), (49, 11594), (61, 11663), (66, 11711), (80, 11783), (91, 11828), (96, 11852), (107, 11903), (122, 11957), (128, 12014), (133, 12053),

Gene: D12_10 Start: 12708, Stop: 13484, Start Num: 8

Candidate Starts for D12_10:

(Start: 8 @12708 has 300 MA's), (20, 12729), (21, 12732), (26, 12750), (32, 12783), (39, 12837), (40, 12843), (45, 12876), (66, 13023), (70, 13047), (71, 13053), (90, 13137), (109, 13221), (120, 13263), (132, 13368), (134, 13374), (143, 13434),

Gene: DaddyDaniels_13 Start: 11305, Stop: 12108, Start Num: 8

Candidate Starts for DaddyDaniels_13:

(Start: 8 @11305 has 300 MA's), (17, 11326), (20, 11338), (23, 11350), (49, 11512), (61, 11581), (66, 11629), (80, 11701), (91, 11746), (96, 11770), (107, 11821), (122, 11875), (128, 11932), (133, 11971),

Gene: Daffy_13 Start: 11309, Stop: 12112, Start Num: 8

Candidate Starts for Daffy_13:

(Start: 8 @11309 has 300 MA's), (17, 11330), (20, 11342), (23, 11354), (49, 11516), (61, 11585), (66, 11633), (80, 11705), (91, 11750), (96, 11774), (107, 11825), (122, 11879), (128, 11936), (133, 11975),

Gene: Daisy_15 Start: 13161, Stop: 13970, Start Num: 7

Candidate Starts for Daisy_15:

(Start: 7 @13161 has 44 MA's), (28, 13224), (38, 13287), (53, 13383), (59, 13431), (61, 13437), (66, 13485), (80, 13557), (86, 13587), (89, 13590), (92, 13608), (104, 13668), (110, 13689), (123, 13755), (142, 13896), (143, 13899),

Gene: Daka_13 Start: 11605, Stop: 12402, Start Num: 8

Candidate Starts for Daka_13:

(Start: 8 @11605 has 300 MA's), (17, 11626), (20, 11638), (23, 11650), (49, 11812), (61, 11881), (66, 11929), (80, 12001), (91, 12046), (96, 12070), (107, 12121), (122, 12175), (128, 12232), (133, 12271),

Gene: Dati_13 Start: 11303, Stop: 12106, Start Num: 8

Candidate Starts for Dati_13:

(Start: 8 @11303 has 300 MA's), (17, 11324), (20, 11336), (23, 11348), (49, 11510), (61, 11579), (66, 11627), (80, 11699), (91, 11744), (96, 11768), (107, 11819), (122, 11873), (128, 11930), (133, 11969),

Gene: Deenasa_15 Start: 13903, Stop: 14712, Start Num: 7

Candidate Starts for Deenasa_15:

(Start: 7 @13903 has 44 MA's), (28, 13966), (38, 14029), (53, 14125), (59, 14173), (61, 14179), (66, 14227), (80, 14299), (86, 14329), (92, 14350), (104, 14410), (110, 14431), (123, 14497), (142, 14638), (143, 14641),

Gene: DelRivs_12 Start: 11308, Stop: 12111, Start Num: 8

Candidate Starts for DelRivs_12:

(Start: 8 @11308 has 300 MA's), (17, 11329), (20, 11341), (23, 11353), (49, 11515), (61, 11584), (66, 11632), (80, 11704), (91, 11749), (96, 11773), (107, 11824), (122, 11878), (128, 11935), (133, 11974),

Gene: Derpp_12 Start: 11161, Stop: 11958, Start Num: 8

Candidate Starts for Derpp_12:

(Start: 8 @11161 has 300 MA's), (17, 11182), (20, 11194), (23, 11206), (61, 11437), (66, 11485), (80, 11557), (91, 11602), (96, 11626), (107, 11677), (122, 11731), (128, 11788), (133, 11827),

Gene: Devonte_15 Start: 13140, Stop: 13949, Start Num: 7

Candidate Starts for Devonte_15:

(Start: 7 @13140 has 44 MA's), (28, 13203), (38, 13266), (53, 13362), (59, 13410), (61, 13416), (66, 13464), (80, 13536), (86, 13566), (92, 13587), (104, 13647), (110, 13668), (123, 13734), (142, 13875), (143, 13878),

Gene: Dice_13 Start: 11308, Stop: 12105, Start Num: 8

Candidate Starts for Dice_13:

(Start: 8 @11308 has 300 MA's), (17, 11329), (20, 11341), (23, 11353), (49, 11515), (61, 11584), (66, 11632), (80, 11704), (91, 11749), (96, 11773), (107, 11824), (122, 11878), (128, 11935), (133, 11974),

Gene: DigitDog_14 Start: 13334, Stop: 14140, Start Num: 9

Candidate Starts for DigitDog_14:

(Start: 9 @13334 has 10 MA's), (34, 13424), (60, 13628), (71, 13709), (80, 13751), (94, 13814), (97, 13826), (111, 13886), (123, 13943), (128, 13985), (139, 14063), (149, 14117),

Gene: Dingo_13 Start: 11599, Stop: 12402, Start Num: 8

Candidate Starts for Dingo_13:

(Start: 8 @11599 has 300 MA's), (17, 11620), (20, 11632), (23, 11644), (49, 11806), (61, 11875), (66, 11923), (80, 11995), (91, 12040), (96, 12064), (107, 12115), (122, 12169), (128, 12226), (133, 12265),

Gene: Dione_12 Start: 11309, Stop: 12106, Start Num: 8

Candidate Starts for Dione_12:

(Start: 8 @11309 has 300 MA's), (17, 11330), (20, 11342), (23, 11354), (49, 11516), (61, 11585), (66, 11633), (80, 11705), (91, 11750), (96, 11774), (107, 11825), (122, 11879), (128, 11936), (133, 11975),

Gene: DirtJuice_13 Start: 11602, Stop: 12405, Start Num: 8

Candidate Starts for DirtJuice_13:

(Start: 8 @11602 has 300 MA's), (17, 11623), (20, 11635), (23, 11647), (49, 11809), (61, 11878), (66, 11926), (80, 11998), (91, 12043), (96, 12067), (107, 12118), (122, 12172), (128, 12229), (133, 12268),

Gene: Doddsville_13 Start: 11303, Stop: 12106, Start Num: 8

Candidate Starts for Doddsville_13:

(Start: 8 @11303 has 300 MA's), (17, 11324), (20, 11336), (23, 11348), (49, 11510), (61, 11579), (66, 11627), (80, 11699), (91, 11744), (96, 11768), (107, 11819), (122, 11873), (128, 11930), (133, 11969),

Gene: DoesntMatter_13 Start: 11602, Stop: 12399, Start Num: 8

Candidate Starts for DoesntMatter_13:

(Start: 8 @11602 has 300 MA's), (17, 11623), (20, 11635), (23, 11647), (49, 11809), (61, 11878), (66, 11926), (80, 11998), (91, 12043), (96, 12067), (107, 12118), (122, 12172), (128, 12229), (133, 12268),

Gene: DonSanchon_12 Start: 11309, Stop: 12112, Start Num: 8

Candidate Starts for DonSanchon_12:

(Start: 8 @11309 has 300 MA's), (17, 11330), (20, 11342), (23, 11354), (49, 11516), (61, 11585), (66, 11633), (80, 11705), (91, 11750), (96, 11774), (107, 11825), (122, 11879), (128, 11936), (133, 11975),

Gene: DonTron_45 Start: 25122, Stop: 25889, Start Num: 8

Candidate Starts for DonTron_45:

(Start: 8 @25122 has 300 MA's), (27, 25188), (35, 25224), (63, 25395), (64, 25398), (90, 25548), (102, 25602), (129, 25758), (130, 25764), (142, 25842), (147, 25869),

Gene: Donny_14 Start: 13351, Stop: 14157, Start Num: 9

Candidate Starts for Donny_14:

(Start: 9 @13351 has 10 MA's), (18, 13366), (25, 13393), (34, 13441), (71, 13726), (80, 13768), (84, 13786), (89, 13804), (94, 13831), (97, 13843), (111, 13903), (123, 13960), (125, 13978), (128, 14002), (134, 14044), (139, 14080),

Gene: Dori_11 Start: 10375, Stop: 11223, Start Num: 8

Candidate Starts for Dori_11:

(Start: 8 @10375 has 300 MA's), (18, 10390), (38, 10501), (40, 10513), (45, 10546), (61, 10648), (66, 10696), (75, 10744), (80, 10768), (90, 10810), (96, 10837), (114, 10912), (118, 10918), (122, 10948), (123, 10963), (125, 10981), (134, 11047), (136, 11059), (139, 11083), (142, 11104), (149, 11137),

Gene: DuchessDung_12 Start: 11155, Stop: 11952, Start Num: 8

Candidate Starts for DuchessDung_12:

(Start: 8 @11155 has 300 MA's), (17, 11176), (20, 11188), (23, 11200), (61, 11431), (66, 11479), (80, 11551), (91, 11596), (96, 11620), (107, 11671), (122, 11725), (128, 11782), (133, 11821),

Gene: Duggie_12 Start: 11305, Stop: 12108, Start Num: 8

Candidate Starts for Duggie_12:

(Start: 8 @11305 has 300 MA's), (17, 11326), (20, 11338), (23, 11350), (49, 11512), (61, 11581), (66, 11629), (80, 11701), (91, 11746), (96, 11770), (107, 11821), (122, 11875), (128, 11932), (133, 11971),

Gene: Durga_13 Start: 11616, Stop: 12413, Start Num: 8

Candidate Starts for Durga_13:

(Start: 8 @11616 has 300 MA's), (17, 11637), (20, 11649), (23, 11661), (49, 11823), (61, 11892), (66, 11940), (80, 12012), (91, 12057), (96, 12081), (107, 12132), (122, 12186), (128, 12243), (133, 12282),

Gene: Eaglehorse_16 Start: 14556, Stop: 15374, Start Num: 5

Candidate Starts for Eaglehorse_16:

(Start: 5 @14556 has 33 MA's), (38, 14700), (49, 14781), (58, 14835), (59, 14841), (67, 14901), (74, 14940), (82, 14979), (92, 15018), (116, 15114), (123, 15162), (128, 15204), (132, 15240), (143, 15306),

Gene: EarickHC_28 Start: 15751, Stop: 16398, Start Num: 51

Candidate Starts for EarickHC_28:

(21, 15568), (41, 15679), (Start: 51 @15751 has 1 MA's), (61, 15811), (82, 15961), (91, 16012), (94, 16027), (102, 16066), (103, 16075), (105, 16087), (138, 16309), (148, 16363),

Gene: EastView9101_14 Start: 13358, Stop: 14164, Start Num: 9

Candidate Starts for EastView9101_14:

(Start: 9 @13358 has 10 MA's), (18, 13373), (25, 13400), (34, 13448), (61, 13655), (66, 13703), (71, 13733), (80, 13775), (84, 13793), (89, 13811), (94, 13838), (97, 13850), (111, 13910), (123, 13967), (128, 14009), (139, 14087),

Gene: Emiris_13 Start: 11603, Stop: 12400, Start Num: 8

Candidate Starts for Emiris_13:

(Start: 8 @11603 has 300 MA's), (17, 11624), (20, 11636), (23, 11648), (49, 11810), (61, 11879), (66, 11927), (80, 11999), (91, 12044), (96, 12068), (107, 12119), (122, 12173), (128, 12230), (133, 12269),

Gene: EmpTee_13 Start: 11603, Stop: 12400, Start Num: 8

Candidate Starts for EmpTee_13:

(Start: 8 @11603 has 300 MA's), (17, 11624), (20, 11636), (23, 11648), (49, 11810), (61, 11879), (66, 11927), (80, 11999), (91, 12044), (96, 12068), (107, 12119), (122, 12173), (128, 12230), (133, 12269),

Gene: Eremos_13 Start: 11596, Stop: 12399, Start Num: 8

Candidate Starts for Eremos_13:

(Start: 8 @11596 has 300 MA's), (17, 11617), (20, 11629), (23, 11641), (49, 11803), (61, 11872), (66, 11920), (80, 11992), (91, 12037), (96, 12061), (107, 12112), (122, 12166), (128, 12223), (133, 12262),

Gene: Etaye_13 Start: 11599, Stop: 12396, Start Num: 8

Candidate Starts for Etaye_13:

(Start: 8 @11599 has 300 MA's), (17, 11620), (20, 11632), (23, 11644), (49, 11806), (61, 11875), (66, 11923), (80, 11995), (91, 12040), (96, 12064), (107, 12115), (122, 12169), (128, 12226), (133, 12265),

Gene: Eugenia_13 Start: 11603, Stop: 12400, Start Num: 8

Candidate Starts for Eugenia_13:

(Start: 8 @11603 has 300 MA's), (17, 11624), (20, 11636), (23, 11648), (49, 11810), (61, 11879), (66, 11927), (80, 11999), (91, 12044), (96, 12068), (107, 12119), (122, 12173), (128, 12230), (133, 12269),

Gene: Evaa_13 Start: 12976, Stop: 13755, Start Num: 8

Candidate Starts for Evaa_13:

(Start: 8 @12976 has 300 MA's), (68, 13312), (92, 13420), (118, 13519), (123, 13564), (128, 13606), (134, 13648),

Gene: Fang_13 Start: 11606, Stop: 12403, Start Num: 8

Candidate Starts for Fang_13:

(Start: 8 @11606 has 300 MA's), (17, 11627), (20, 11639), (23, 11651), (49, 11813), (61, 11882), (66, 11930), (80, 12002), (91, 12047), (96, 12071), (107, 12122), (122, 12176), (128, 12233), (133, 12272),

Gene: Faze9_16 Start: 14649, Stop: 15467, Start Num: 5

Candidate Starts for Faze9_16:

(Start: 5 @14649 has 33 MA's), (38, 14793), (49, 14874), (58, 14928), (59, 14934), (67, 14994), (74, 15033), (82, 15072), (92, 15111), (116, 15207), (123, 15255), (128, 15297), (132, 15333), (143, 15399),

Gene: FluffyNinja_13 Start: 11600, Stop: 12403, Start Num: 8

Candidate Starts for FluffyNinja_13:

(Start: 8 @11600 has 300 MA's), (17, 11621), (20, 11633), (23, 11645), (49, 11807), (61, 11876), (66, 11924), (80, 11996), (91, 12041), (96, 12065), (107, 12116), (122, 12170), (128, 12227), (133, 12266),

Gene: Fortunato_13 Start: 13340, Stop: 14134, Start Num: 8

Candidate Starts for Fortunato_13:

(Start: 8 @13340 has 300 MA's), (17, 13361), (38, 13472), (59, 13610), (66, 13664), (69, 13685), (73, 13706), (75, 13712), (92, 13799), (101, 13841), (123, 13937), (124, 13940), (128, 13979), (134, 14021), (141, 14063), (149, 14111),

Gene: Fozzie_12 Start: 11600, Stop: 12403, Start Num: 8

Candidate Starts for Fozzie_12:

(Start: 8 @11600 has 300 MA's), (17, 11621), (20, 11633), (23, 11645), (49, 11807), (61, 11876), (66, 11924), (80, 11996), (91, 12041), (96, 12065), (107, 12116), (122, 12170), (128, 12227), (133, 12266),

Gene: Frankicide_13 Start: 11604, Stop: 12407, Start Num: 8

Candidate Starts for Frankicide_13:

(Start: 8 @11604 has 300 MA's), (17, 11625), (20, 11637), (23, 11649), (49, 11811), (61, 11880), (66, 11928), (80, 12000), (91, 12045), (96, 12069), (107, 12120), (122, 12174), (128, 12231), (133, 12270),

Gene: Frederick_13 Start: 13346, Stop: 14140, Start Num: 8

Candidate Starts for Frederick_13:

(Start: 8 @13346 has 300 MA's), (17, 13367), (20, 13379), (38, 13478), (59, 13616), (66, 13670), (69, 13691), (73, 13712), (75, 13718), (92, 13805), (101, 13847), (123, 13943), (128, 13985), (134, 14027), (141, 14069), (149, 14117),

Gene: FrenchFry_16 Start: 14652, Stop: 15470, Start Num: 5

Candidate Starts for FrenchFry_16:

(Start: 5 @14652 has 33 MA's), (38, 14796), (39, 14802), (49, 14877), (58, 14931), (59, 14937), (67, 14997), (74, 15036), (82, 15075), (92, 15114), (116, 15210), (123, 15258), (128, 15300), (132, 15336), (143, 15402),

Gene: Fresco_12 Start: 11636, Stop: 12418, Start Num: 8

Candidate Starts for Fresco_12:

(Start: 8 @11636 has 300 MA's), (15, 11648), (32, 11726), (128, 12272), (129, 12287), (132, 12308), (139, 12350), (141, 12356), (146, 12395),

Gene: Freya_12 Start: 11310, Stop: 12107, Start Num: 8

Candidate Starts for Freya_12:

(Start: 8 @11310 has 300 MA's), (17, 11331), (20, 11343), (23, 11355), (49, 11517), (61, 11586), (66, 11634), (80, 11706), (91, 11751), (96, 11775), (107, 11826), (122, 11880), (128, 11937), (133, 11976),

Gene: FriarPreacher_13 Start: 11605, Stop: 12408, Start Num: 8

Candidate Starts for FriarPreacher_13:

(Start: 8 @11605 has 300 MA's), (17, 11626), (20, 11638), (23, 11650), (49, 11812), (61, 11881), (66, 11929), (80, 12001), (91, 12046), (96, 12070), (107, 12121), (122, 12175), (128, 12232), (133, 12271),

Gene: Fringe_13 Start: 11603, Stop: 12400, Start Num: 8

Candidate Starts for Fringe_13:

(Start: 8 @11603 has 300 MA's), (17, 11624), (20, 11636), (23, 11648), (49, 11810), (61, 11879), (66, 11927), (80, 11999), (91, 12044), (96, 12068), (107, 12119), (122, 12173), (128, 12230), (133, 12269),

Gene: FugateOSU_12 Start: 11309, Stop: 12112, Start Num: 8

Candidate Starts for FugateOSU_12:

(Start: 8 @11309 has 300 MA's), (17, 11330), (20, 11342), (23, 11354), (49, 11516), (61, 11585), (66, 11633), (80, 11705), (91, 11750), (96, 11774), (107, 11825), (122, 11879), (128, 11936), (133, 11975),

Gene: Funsized_18 Start: 15411, Stop: 16229, Start Num: 8

Candidate Starts for Funsized_18:

(Start: 8 @15411 has 300 MA's), (17, 15441), (20, 15453), (37, 15531), (61, 15699), (65, 15729), (76, 15804), (92, 15876), (100, 15915), (112, 15960), (114, 15966), (119, 15987), (121, 15993), (132, 16104), (142, 16167),

Gene: Gadget_16 Start: 13144, Stop: 13953, Start Num: 7

Candidate Starts for Gadget_16:

(Start: 7 @13144 has 44 MA's), (28, 13207), (38, 13270), (53, 13366), (59, 13414), (61, 13420), (66, 13468), (80, 13540), (86, 13570), (92, 13591), (104, 13651), (110, 13672), (123, 13738), (142, 13879), (143, 13882),

Gene: Gareth_12 Start: 11306, Stop: 12103, Start Num: 8

Candidate Starts for Gareth_12:

(Start: 8 @11306 has 300 MA's), (17, 11327), (20, 11339), (23, 11351), (49, 11513), (61, 11582), (66, 11630), (80, 11702), (91, 11747), (96, 11771), (107, 11822), (122, 11876), (128, 11933), (133, 11972),

Gene: GeneCoco_13 Start: 11608, Stop: 12405, Start Num: 8

Candidate Starts for GeneCoco_13:

(Start: 8 @11608 has 300 MA's), (17, 11629), (20, 11641), (23, 11653), (49, 11815), (61, 11884), (66, 11932), (80, 12004), (91, 12049), (96, 12073), (107, 12124), (122, 12178), (128, 12235), (133, 12274),

Gene: Gervas_15 Start: 13123, Stop: 13932, Start Num: 7

Candidate Starts for Gervas_15:

(Start: 7 @13123 has 44 MA's), (28, 13186), (38, 13249), (53, 13345), (59, 13393), (61, 13399), (66, 13447), (80, 13519), (86, 13549), (92, 13570), (104, 13630), (110, 13651), (123, 13717), (142, 13858), (143, 13861),

Gene: Giraffe_13 Start: 11310, Stop: 12107, Start Num: 8

Candidate Starts for Giraffe_13:

(Start: 8 @11310 has 300 MA's), (17, 11331), (20, 11343), (23, 11355), (49, 11517), (61, 11586), (66, 11634), (80, 11706), (91, 11751), (96, 11775), (107, 11826), (122, 11880), (128, 11937), (133, 11976),

Gene: Glass_16 Start: 14652, Stop: 15470, Start Num: 5

Candidate Starts for Glass_16:

(Start: 5 @14652 has 33 MA's), (38, 14796), (39, 14802), (58, 14931), (59, 14937), (67, 14997), (74, 15036), (82, 15075), (92, 15114), (116, 15210), (123, 15258), (128, 15300), (132, 15336), (143, 15402),

Gene: GlenHope_16 Start: 13130, Stop: 13939, Start Num: 7

Candidate Starts for GlenHope_16:

(Start: 7 @13130 has 44 MA's), (28, 13193), (38, 13256), (53, 13352), (59, 13400), (61, 13406), (66, 13454), (80, 13526), (86, 13556), (92, 13577), (104, 13637), (110, 13658), (123, 13724), (142, 13865), (143, 13868),

Gene: GodPhather_11 Start: 12988, Stop: 13764, Start Num: 8

Candidate Starts for GodPhather_11:

(Start: 8 @12988 has 300 MA's), (20, 13009), (21, 13012), (26, 13030), (32, 13063), (39, 13117), (40, 13123), (45, 13156), (66, 13303), (70, 13327), (71, 13333), (90, 13417), (109, 13501), (120, 13543), (132, 13648), (134, 13654), (143, 13714),

Gene: Godines_16 Start: 14535, Stop: 15353, Start Num: 5

Candidate Starts for Godines_16:

(Start: 5 @14535 has 33 MA's), (38, 14679), (58, 14814), (59, 14820), (67, 14880), (74, 14919), (82, 14958), (92, 14997), (116, 15093), (123, 15141), (128, 15183), (132, 15219), (143, 15285),

Gene: Gophee_13 Start: 11605, Stop: 12402, Start Num: 8

Candidate Starts for Gophee_13:

(Start: 8 @11605 has 300 MA's), (17, 11626), (20, 11638), (23, 11650), (49, 11812), (61, 11881), (66, 11929), (80, 12001), (91, 12046), (96, 12070), (107, 12121), (122, 12175), (128, 12232), (133, 12271),

Gene: Grand2040_12 Start: 11307, Stop: 12110, Start Num: 8

Candidate Starts for Grand2040_12:

(Start: 8 @11307 has 300 MA's), (17, 11328), (20, 11340), (23, 11352), (49, 11514), (61, 11583), (66, 11631), (80, 11703), (91, 11748), (96, 11772), (107, 11823), (122, 11877), (128, 11934), (133, 11973),

Gene: Gwilliam_13 Start: 11599, Stop: 12402, Start Num: 8

Candidate Starts for Gwilliam_13:

(Start: 8 @11599 has 300 MA's), (17, 11620), (20, 11632), (23, 11644), (49, 11806), (61, 11875), (66, 11923), (80, 11995), (91, 12040), (96, 12064), (107, 12115), (122, 12169), (128, 12226), (133, 12265),

Gene: Gyarad_0013 Start: 11602, Stop: 12405, Start Num: 8

Candidate Starts for Gyarad_0013:

(Start: 8 @11602 has 300 MA's), (17, 11623), (20, 11635), (23, 11647), (49, 11809), (61, 11878), (66, 11926), (80, 11998), (91, 12043), (96, 12067), (107, 12118), (122, 12172), (128, 12229), (133, 12268),

Gene: HSavage_13 Start: 11604, Stop: 12407, Start Num: 8

Candidate Starts for HSavage_13:

(Start: 8 @11604 has 300 MA's), (17, 11625), (20, 11637), (23, 11649), (49, 11811), (61, 11880), (66, 11928), (80, 12000), (91, 12045), (96, 12069), (107, 12120), (122, 12174), (128, 12231), (133, 12270),

Gene: Haimas_13 Start: 11602, Stop: 12399, Start Num: 8

Candidate Starts for Haimas_13:

(Start: 8 @11602 has 300 MA's), (17, 11623), (20, 11635), (23, 11647), (49, 11809), (61, 11878), (66, 11926), (80, 11998), (91, 12043), (96, 12067), (107, 12118), (122, 12172), (128, 12229), (133, 12268),

Gene: Haleema_12 Start: 11309, Stop: 12112, Start Num: 8

Candidate Starts for Haleema_12:

(Start: 8 @11309 has 300 MA's), (17, 11330), (20, 11342), (23, 11354), (49, 11516), (61, 11585), (66, 11633), (80, 11705), (91, 11750), (96, 11774), (107, 11825), (122, 11879), (128, 11936), (133, 11975),

Gene: Halfpint_14 Start: 12965, Stop: 13774, Start Num: 7

Candidate Starts for Halfpint_14:

(Start: 7 @12965 has 44 MA's), (28, 13028), (38, 13091), (53, 13187), (59, 13235), (61, 13241), (66, 13289), (80, 13361), (86, 13391), (92, 13412), (104, 13472), (110, 13493), (123, 13559), (142, 13700), (143, 13703),

Gene: Hamish_13 Start: 11602, Stop: 12399, Start Num: 8

Candidate Starts for Hamish_13:

(Start: 8 @11602 has 300 MA's), (17, 11623), (20, 11635), (23, 11647), (49, 11809), (61, 11878), (66, 11926), (80, 11998), (91, 12043), (96, 12067), (107, 12118), (122, 12172), (128, 12229), (133, 12268),

Gene: Hangman_13 Start: 13346, Stop: 14140, Start Num: 8

Candidate Starts for Hangman_13:

(Start: 8 @13346 has 300 MA's), (17, 13367), (20, 13379), (38, 13478), (59, 13616), (66, 13670), (69, 13691), (73, 13712), (75, 13718), (80, 13742), (92, 13805), (101, 13847), (123, 13943), (128, 13985), (134, 14027), (141, 14069), (149, 14117),

Gene: Hartsy_12 Start: 11599, Stop: 12396, Start Num: 8

Candidate Starts for Hartsy_12:

(Start: 8 @11599 has 300 MA's), (17, 11620), (20, 11632), (23, 11644), (61, 11875), (66, 11923), (80, 11995), (91, 12040), (96, 12064), (107, 12115), (122, 12169), (128, 12226), (133, 12265),

Gene: Harvey_13 Start: 11606, Stop: 12409, Start Num: 8

Candidate Starts for Harvey_13:

(Start: 8 @11606 has 300 MA's), (17, 11627), (20, 11639), (23, 11651), (49, 11813), (61, 11882), (66, 11930), (80, 12002), (91, 12047), (96, 12071), (107, 12122), (122, 12176), (128, 12233), (133, 12272),

Gene: HarveySr_15 Start: 13117, Stop: 13926, Start Num: 7

Candidate Starts for HarveySr_15:

(Start: 7 @13117 has 44 MA's), (28, 13180), (38, 13243), (53, 13339), (59, 13387), (61, 13393), (66, 13441), (80, 13513), (86, 13543), (89, 13546), (92, 13564), (104, 13624), (110, 13645), (123, 13711), (142, 13852), (143, 13855),

Gene: Hashim76_18 Start: 12742, Stop: 13515, Start Num: 17

Candidate Starts for Hashim76_18:

(Start: 13 @12730 has 2 MA's), (17, 12742), (38, 12850), (39, 12856), (49, 12928), (60, 12994), (66, 13045), (92, 13186), (128, 13366), (134, 13408), (141, 13450), (149, 13498),

Gene: Heath_13 Start: 13346, Stop: 14140, Start Num: 8

Candidate Starts for Heath_13:

(Start: 8 @13346 has 300 MA's), (17, 13367), (20, 13379), (38, 13478), (59, 13616), (66, 13670), (69, 13691), (73, 13712), (75, 13718), (92, 13805), (101, 13847), (123, 13943), (124, 13946), (128, 13985), (134, 14027), (141, 14069), (149, 14117),

Gene: Heathcliff_15 Start: 13102, Stop: 13911, Start Num: 7

Candidate Starts for Heathcliff_15:

(Start: 7 @13102 has 44 MA's), (28, 13165), (38, 13228), (53, 13324), (59, 13372), (61, 13378), (66, 13426), (80, 13498), (86, 13528), (89, 13531), (92, 13549), (104, 13609), (110, 13630), (123, 13696), (142, 13837), (143, 13840),

Gene: Hedgerow_16 Start: 14634, Stop: 15452, Start Num: 5

Candidate Starts for Hedgerow_16:

(Start: 5 @14634 has 33 MA's), (38, 14778), (49, 14859), (58, 14913), (59, 14919), (67, 14979), (74, 15018), (82, 15057), (92, 15096), (116, 15192), (123, 15240), (128, 15282), (132, 15318), (143, 15384),

Gene: Held_13 Start: 11310, Stop: 12113, Start Num: 8

Candidate Starts for Held_13:

(Start: 8 @11310 has 300 MA's), (17, 11331), (20, 11343), (23, 11355), (49, 11517), (61, 11586), (66, 11634), (80, 11706), (91, 11751), (96, 11775), (107, 11826), (122, 11880), (128, 11937), (133, 11976),

Gene: HenryJackson_12 Start: 11312, Stop: 12115, Start Num: 8

Candidate Starts for HenryJackson_12:

(Start: 8 @11312 has 300 MA's), (17, 11333), (20, 11345), (23, 11357), (49, 11519), (61, 11588), (66, 11636), (80, 11708), (91, 11753), (96, 11777), (107, 11828), (122, 11882), (128, 11939), (133, 11978),

Gene: Hertubise_13 Start: 11605, Stop: 12402, Start Num: 8

Candidate Starts for Hertubise_13:

(Start: 8 @11605 has 300 MA's), (17, 11626), (20, 11638), (23, 11650), (49, 11812), (61, 11881), (66, 11929), (80, 12001), (91, 12046), (96, 12070), (107, 12121), (122, 12175), (128, 12232), (133, 12271),

Gene: Hetaeria_13 Start: 11602, Stop: 12405, Start Num: 8

Candidate Starts for Hetaeria_13:

(Start: 8 @11602 has 300 MA's), (17, 11623), (20, 11635), (23, 11647), (49, 11809), (61, 11878), (66, 11926), (80, 11998), (91, 12043), (96, 12067), (107, 12118), (122, 12172), (128, 12229), (133, 12268),

Gene: HighStump_12 Start: 11309, Stop: 12106, Start Num: 8

Candidate Starts for HighStump_12:

(Start: 8 @11309 has 300 MA's), (17, 11330), (20, 11342), (23, 11354), (49, 11516), (61, 11585), (66, 11633), (80, 11705), (91, 11750), (96, 11774), (107, 11825), (122, 11879), (128, 11936), (133, 11975),

Gene: Hocus_12 Start: 11309, Stop: 12106, Start Num: 8

Candidate Starts for Hocus_12:

(Start: 8 @11309 has 300 MA's), (17, 11330), (20, 11342), (23, 11354), (61, 11585), (66, 11633), (80, 11705), (91, 11750), (96, 11774), (107, 11825), (122, 11879), (128, 11936), (133, 11975),

Gene: Holeinone_16 Start: 14534, Stop: 15352, Start Num: 5

Candidate Starts for Holeinone_16:

(Start: 5 @14534 has 33 MA's), (38, 14678), (58, 14813), (59, 14819), (67, 14879), (74, 14918), (82, 14957), (92, 14996), (116, 15092), (123, 15140), (128, 15182), (132, 15218), (143, 15284),

Gene: Horchata_13 Start: 11601, Stop: 12404, Start Num: 8

Candidate Starts for Horchata_13:

(Start: 8 @11601 has 300 MA's), (17, 11622), (20, 11634), (23, 11646), (49, 11808), (61, 11877), (66, 11925), (80, 11997), (91, 12042), (96, 12066), (107, 12117), (122, 12171), (128, 12228), (133, 12267),

Gene: Hosp_09 Start: 10034, Stop: 10801, Start Num: 8

Candidate Starts for Hosp_09:

(Start: 8 @10034 has 300 MA's), (17, 10055), (59, 10295), (69, 10370), (88, 10451), (123, 10610), (125, 10628), (136, 10706), (141, 10736),

Gene: Hydro_13 Start: 13343, Stop: 14137, Start Num: 8

Candidate Starts for Hydro_13:

(Start: 8 @13343 has 300 MA's), (17, 13364), (20, 13376), (38, 13475), (59, 13613), (66, 13667), (69, 13688), (73, 13709), (75, 13715), (80, 13739), (92, 13802), (101, 13844), (123, 13940), (128, 13982), (134, 14024), (141, 14066), (149, 14114),

Gene: ImtiyazSitla_12 Start: 11149, Stop: 11946, Start Num: 8

Candidate Starts for ImtiyazSitla_12:

(Start: 8 @11149 has 300 MA's), (17, 11170), (20, 11182), (23, 11194), (61, 11425), (66, 11473), (80, 11545), (91, 11590), (96, 11614), (107, 11665), (122, 11719), (128, 11776), (133, 11815),

Gene: Imvubu_10 Start: 10724, Stop: 11518, Start Num: 11

Candidate Starts for Imvubu_10:

(Start: 11 @10724 has 1 MA's), (20, 10748), (45, 10889), (61, 10988), (74, 11081), (75, 11084), (82, 11135), (92, 11183), (100, 11222), (108, 11252), (125, 11339), (128, 11363),

Gene: Inchworm_13 Start: 11599, Stop: 12396, Start Num: 8

Candidate Starts for Inchworm_13:

(Start: 8 @11599 has 300 MA's), (17, 11620), (20, 11632), (23, 11644), (49, 11806), (61, 11875), (66, 11923), (80, 11995), (91, 12040), (96, 12064), (107, 12115), (122, 12169), (128, 12226), (133, 12265),

Gene: Indlovu_13 Start: 13063, Stop: 13839, Start Num: 12

Candidate Starts for Indlovu_13:

(Start: 12 @13063 has 1 MA's), (17, 13075), (74, 13423), (97, 13531), (116, 13600), (123, 13648), (126, 13684), (128, 13690), (132, 13726), (143, 13792), (149, 13822),

Gene: Inverness_13 Start: 11604, Stop: 12407, Start Num: 8

Candidate Starts for Inverness_13:

(Start: 8 @11604 has 300 MA's), (17, 11625), (20, 11637), (23, 11649), (49, 11811), (61, 11880), (66, 11928), (80, 12000), (91, 12045), (96, 12069), (107, 12120), (122, 12174), (128, 12231), (133, 12270),

Gene: Iridoclysis_13 Start: 11606, Stop: 12403, Start Num: 8

Candidate Starts for Iridoclysis_13:

(Start: 8 @11606 has 300 MA's), (17, 11627), (20, 11639), (23, 11651), (49, 11813), (61, 11882), (66, 11930), (80, 12002), (91, 12047), (96, 12071), (107, 12122), (122, 12176), (128, 12233), (133, 12272),

Gene: IsaacEli_13 Start: 11602, Stop: 12405, Start Num: 8

Candidate Starts for IsaacEli_13:

(Start: 8 @11602 has 300 MA's), (17, 11623), (20, 11635), (23, 11647), (49, 11809), (61, 11878), (66, 11926), (80, 11998), (91, 12043), (96, 12067), (107, 12118), (122, 12172), (128, 12229), (133, 12268),

Gene: ItsyBitsy1_16 Start: 14526, Stop: 15344, Start Num: 5

Candidate Starts for ItsyBitsy1_16:

(Start: 5 @14526 has 33 MA's), (38, 14670), (49, 14751), (58, 14805), (59, 14811), (67, 14871), (74, 14910), (82, 14949), (92, 14988), (116, 15084), (123, 15132), (128, 15174), (132, 15210), (143, 15276),

Gene: JAMaL_13 Start: 13517, Stop: 14314, Start Num: 8

Candidate Starts for JAMaL_13:

(Start: 8 @13517 has 300 MA's), (17, 13535), (19, 13544), (31, 13601), (38, 13646), (59, 13784), (66, 13838), (69, 13859), (73, 13880), (75, 13886), (101, 14015), (122, 14102), (123, 14117), (125, 14135), (128, 14159), (134, 14201), (141, 14243), (149, 14291),

Gene: JDog_12 Start: 11305, Stop: 12108, Start Num: 8

Candidate Starts for JDog_12:

(Start: 8 @11305 has 300 MA's), (17, 11326), (20, 11338), (23, 11350), (49, 11512), (61, 11581), (66, 11629), (80, 11701), (91, 11746), (96, 11770), (107, 11821), (122, 11875), (128, 11932), (133, 11971),

Gene: JacAttac_13 Start: 11599, Stop: 12396, Start Num: 8

Candidate Starts for JacAttac_13:

(Start: 8 @11599 has 300 MA's), (17, 11620), (20, 11632), (23, 11644), (61, 11875), (66, 11923), (80, 11995), (91, 12040), (96, 12064), (107, 12115), (122, 12169), (128, 12226), (133, 12265),

Gene: Jackstina_14 Start: 13066, Stop: 13875, Start Num: 7

Candidate Starts for Jackstina_14:

(Start: 7 @13066 has 44 MA's), (28, 13129), (38, 13192), (53, 13288), (59, 13336), (61, 13342), (66, 13390), (80, 13462), (86, 13492), (89, 13495), (92, 13513), (104, 13573), (110, 13594), (123, 13660), (142, 13801), (143, 13804),

Gene: JaguarMi_14 Start: 13170, Stop: 13970, Start Num: 8

Candidate Starts for JaguarMi_14:

(Start: 8 @13170 has 300 MA's), (17, 13191), (20, 13203), (31, 13257), (38, 13302), (59, 13440), (66, 13494), (69, 13515), (73, 13536), (75, 13542), (101, 13671), (107, 13698), (123, 13773), (124, 13776), (128, 13815), (134, 13857), (141, 13899), (149, 13947),

Gene: JakeO_12 Start: 11305, Stop: 12108, Start Num: 8

Candidate Starts for JakeO_12:

(Start: 8 @11305 has 300 MA's), (17, 11326), (20, 11338), (23, 11350), (49, 11512), (61, 11581), (66, 11629), (80, 11701), (91, 11746), (96, 11770), (107, 11821), (122, 11875), (128, 11932), (133, 11971),

Gene: JangoPhett_13 Start: 11600, Stop: 12397, Start Num: 8

Candidate Starts for JangoPhett_13:

(Start: 8 @11600 has 300 MA's), (17, 11621), (20, 11633), (23, 11645), (49, 11807), (61, 11876), (66, 11924), (80, 11996), (91, 12041), (96, 12065), (107, 12116), (122, 12170), (128, 12227), (133, 12266),

Gene: Jeon_10 Start: 12718, Stop: 13494, Start Num: 8

Candidate Starts for Jeon_10:

(Start: 8 @12718 has 300 MA's), (20, 12739), (21, 12742), (26, 12760), (32, 12793), (39, 12847), (40, 12853), (45, 12886), (66, 13033), (70, 13057), (71, 13063), (90, 13147), (109, 13231), (120, 13273), (132, 13378), (134, 13384), (143, 13444),

Gene: Jillium_12 Start: 11309, Stop: 12112, Start Num: 8

Candidate Starts for Jillium_12:

(Start: 8 @11309 has 300 MA's), (17, 11330), (20, 11342), (23, 11354), (49, 11516), (61, 11585), (66, 11633), (80, 11705), (91, 11750), (96, 11774), (107, 11825), (122, 11879), (128, 11936), (133, 11975),

Gene: Jiminy_12 Start: 11157, Stop: 11954, Start Num: 8

Candidate Starts for Jiminy_12:

(Start: 8 @11157 has 300 MA's), (17, 11178), (20, 11190), (23, 11202), (49, 11364), (61, 11433), (66, 11481), (80, 11553), (91, 11598), (96, 11622), (107, 11673), (122, 11727), (128, 11784), (133, 11823),

Gene: Jolie1_011 Start: 11815, Stop: 12582, Start Num: 8

Candidate Starts for Jolie1_011:

(Start: 8 @11815 has 300 MA's), (17, 11836), (69, 12151), (88, 12232), (92, 12253), (123, 12391), (125, 12409), (136, 12487), (141, 12517),

Gene: KLucky39_13 Start: 11602, Stop: 12405, Start Num: 8

Candidate Starts for KLucky39_13:

(Start: 8 @11602 has 300 MA's), (17, 11623), (20, 11635), (23, 11647), (49, 11809), (61, 11878), (66, 11926), (80, 11998), (91, 12043), (96, 12067), (107, 12118), (122, 12172), (128, 12229), (133, 12268),

Gene: Kahve_12 Start: 11312, Stop: 12115, Start Num: 8

Candidate Starts for Kahve_12:

(Start: 8 @11312 has 300 MA's), (17, 11333), (20, 11345), (23, 11357), (49, 11519), (61, 11588), (66, 11636), (80, 11708), (91, 11753), (96, 11777), (107, 11828), (122, 11882), (128, 11939), (133, 11978),

Gene: Kailash_13 Start: 11611, Stop: 12408, Start Num: 8

Candidate Starts for Kailash_13:

(Start: 8 @11611 has 300 MA's), (17, 11632), (20, 11644), (23, 11656), (61, 11887), (66, 11935), (80, 12007), (91, 12052), (96, 12076), (107, 12127), (122, 12181), (128, 12238), (133, 12277),

Gene: Kaleb_16 Start: 14652, Stop: 15470, Start Num: 5

Candidate Starts for Kaleb_16:

(Start: 5 @14652 has 33 MA's), (38, 14796), (49, 14877), (58, 14931), (59, 14937), (67, 14997), (74, 15036), (82, 15075), (92, 15114), (116, 15210), (123, 15258), (128, 15300), (132, 15336), (143, 15402),

Gene: Kamiyu_15 Start: 13111, Stop: 13920, Start Num: 7

Candidate Starts for Kamiyu_15:

(Start: 7 @13111 has 44 MA's), (28, 13174), (38, 13237), (53, 13333), (59, 13381), (61, 13387), (66, 13435), (80, 13507), (86, 13537), (92, 13558), (104, 13618), (110, 13639), (123, 13705), (142, 13846), (143, 13849),

Gene: Katniss_13 Start: 11603, Stop: 12406, Start Num: 8

Candidate Starts for Katniss_13:

(Start: 8 @11603 has 300 MA's), (17, 11624), (20, 11636), (23, 11648), (49, 11810), (61, 11879), (66, 11927), (80, 11999), (91, 12044), (96, 12068), (107, 12119), (122, 12173), (128, 12230), (133, 12269),

Gene: KayaCho_11 Start: 11827, Stop: 12594, Start Num: 8

Candidate Starts for KayaCho_11:

(Start: 8 @11827 has 300 MA's), (17, 11848), (69, 12163), (88, 12244), (124, 12406), (134, 12487), (141, 12529),

Gene: Keitherie_13 Start: 11616, Stop: 12413, Start Num: 8

Candidate Starts for Keitherie_13:

(Start: 8 @11616 has 300 MA's), (17, 11637), (20, 11649), (23, 11661), (49, 11823), (61, 11892), (66, 11940), (80, 12012), (91, 12057), (96, 12081), (107, 12132), (122, 12186), (128, 12243), (133, 12282),

Gene: Kheth_16 Start: 14535, Stop: 15353, Start Num: 5

Candidate Starts for Kheth_16:

(Start: 5 @14535 has 33 MA's), (38, 14679), (49, 14760), (58, 14814), (59, 14820), (67, 14880), (74, 14919), (82, 14958), (92, 14997), (116, 15093), (123, 15141), (128, 15183), (132, 15219), (143, 15285),

Gene: Kikipoo_13 Start: 11602, Stop: 12405, Start Num: 8

Candidate Starts for Kikipoo_13:

(Start: 8 @11602 has 300 MA's), (17, 11623), (20, 11635), (23, 11647), (49, 11809), (61, 11878), (66, 11926), (80, 11998), (91, 12043), (96, 12067), (107, 12118), (122, 12172), (128, 12229), (133, 12268),

Gene: Kimbrough_13 Start: 11312, Stop: 12115, Start Num: 8

Candidate Starts for Kimbrough_13:

(Start: 8 @11312 has 300 MA's), (17, 11333), (20, 11345), (23, 11357), (49, 11519), (61, 11588), (66, 11636), (80, 11708), (91, 11753), (96, 11777), (107, 11828), (122, 11882), (128, 11939), (133, 11978),

Gene: KingTut_12 Start: 11310, Stop: 12113, Start Num: 8

Candidate Starts for KingTut_12:

(Start: 8 @11310 has 300 MA's), (17, 11331), (20, 11343), (23, 11355), (49, 11517), (61, 11586), (66, 11634), (80, 11706), (91, 11751), (96, 11775), (107, 11826), (122, 11880), (128, 11937), (133, 11976),

Gene: KingVeVeVe_13 Start: 11603, Stop: 12406, Start Num: 8

Candidate Starts for KingVeVeVe_13:

(Start: 8 @11603 has 300 MA's), (17, 11624), (20, 11636), (23, 11648), (49, 11810), (61, 11879), (66, 11927), (80, 11999), (91, 12044), (96, 12068), (107, 12119), (122, 12173), (128, 12230), (133, 12269),

Gene: KlimbOn_13 Start: 11602, Stop: 12405, Start Num: 8

Candidate Starts for KlimbOn_13:

(Start: 8 @11602 has 300 MA's), (17, 11623), (20, 11635), (23, 11647), (49, 11809), (61, 11878), (66, 11926), (80, 11998), (91, 12043), (96, 12067), (107, 12118), (122, 12172), (128, 12229), (133, 12268),

Gene: Kloppinator_13 Start: 11600, Stop: 12403, Start Num: 8

Candidate Starts for Kloppinator_13:

(Start: 8 @11600 has 300 MA's), (17, 11621), (20, 11633), (23, 11645), (49, 11807), (61, 11876), (66, 11924), (80, 11996), (91, 12041), (96, 12065), (107, 12116), (122, 12170), (128, 12227), (133, 12266),

Gene: Knocker_18 Start: 15870, Stop: 16694, Start Num: 8

Candidate Starts for Knocker_18:

(Start: 8 @15870 has 300 MA's), (20, 15894), (27, 15927), (37, 15972), (44, 16029), (47, 16059), (48, 16068), (59, 16155), (61, 16161), (71, 16239), (84, 16302), (100, 16377), (114, 16425), (121, 16452), (128, 16527), (136, 16581), (141, 16611),

Gene: Kronus_14 Start: 13723, Stop: 14532, Start Num: 7

Candidate Starts for Kronus_14:

(Start: 7 @13723 has 44 MA's), (28, 13786), (38, 13849), (53, 13945), (59, 13993), (61, 13999), (66, 14047), (80, 14119), (86, 14149), (92, 14170), (104, 14230), (110, 14251), (123, 14317), (142, 14458), (143, 14461),

Gene: Kwadwo_12 Start: 11309, Stop: 12106, Start Num: 8

Candidate Starts for Kwadwo_12:

(Start: 8 @11309 has 300 MA's), (17, 11330), (20, 11342), (23, 11354), (49, 11516), (61, 11585), (66, 11633), (80, 11705), (91, 11750), (96, 11774), (107, 11825), (122, 11879), (128, 11936), (133, 11975),

Gene: Kwksand96_12 Start: 11155, Stop: 11958, Start Num: 8

Candidate Starts for Kwksand96_12:

(Start: 8 @11155 has 300 MA's), (17, 11176), (20, 11188), (23, 11200), (49, 11362), (61, 11431), (66, 11479), (80, 11551), (91, 11596), (96, 11620), (107, 11671), (122, 11725), (128, 11782), (133, 11821),

Gene: Labeouficaum_12 Start: 11161, Stop: 11958, Start Num: 8

Candidate Starts for Labeouficaum_12:

(Start: 8 @11161 has 300 MA's), (17, 11182), (20, 11194), (23, 11206), (61, 11437), (66, 11485), (80, 11557), (91, 11602), (96, 11626), (107, 11677), (122, 11731), (128, 11788), (133, 11827),

Gene: Lars_16 Start: 14652, Stop: 15470, Start Num: 5

Candidate Starts for Lars_16:

(Start: 5 @14652 has 33 MA's), (38, 14796), (49, 14877), (58, 14931), (59, 14937), (67, 14997), (74, 15036), (82, 15075), (92, 15114), (116, 15210), (123, 15258), (128, 15300), (132, 15336), (143, 15402),

Gene: LasagnaCat_13 Start: 11611, Stop: 12408, Start Num: 8

Candidate Starts for LasagnaCat_13:

(Start: 8 @11611 has 300 MA's), (17, 11632), (20, 11644), (23, 11656), (49, 11818), (61, 11887), (66, 11935), (80, 12007), (91, 12052), (96, 12076), (107, 12127), (122, 12181), (128, 12238), (133, 12277),

Gene: Lasso_13 Start: 11593, Stop: 12396, Start Num: 8

Candidate Starts for Lasso_13:

(Start: 8 @11593 has 300 MA's), (17, 11614), (20, 11626), (23, 11638), (49, 11800), (61, 11869), (66, 11917), (80, 11989), (91, 12034), (96, 12058), (107, 12109), (122, 12163), (128, 12220), (133, 12259),

Gene: Laurie_16 Start: 14530, Stop: 15348, Start Num: 5

Candidate Starts for Laurie_16:

(Start: 5 @14530 has 33 MA's), (38, 14674), (39, 14680), (58, 14809), (59, 14815), (67, 14875), (74, 14914), (82, 14953), (92, 14992), (116, 15088), (123, 15136), (128, 15178), (132, 15214), (143, 15280),

Gene: LeeLot_13 Start: 11602, Stop: 12399, Start Num: 8

Candidate Starts for LeeLot_13:

(Start: 8 @11602 has 300 MA's), (17, 11623), (20, 11635), (23, 11647), (49, 11809), (61, 11878), (66, 11926), (80, 11998), (91, 12043), (96, 12067), (107, 12118), (122, 12172), (128, 12229), (133, 12268),

Gene: Lego3393_13 Start: 11600, Stop: 12403, Start Num: 8

Candidate Starts for Lego3393_13:

(Start: 8 @11600 has 300 MA's), (17, 11621), (20, 11633), (23, 11645), (49, 11807), (61, 11876), (66, 11924), (80, 11996), (91, 12041), (96, 12065), (107, 12116), (122, 12170), (128, 12227), (133, 12266),

Gene: Legolas_12 Start: 11307, Stop: 12110, Start Num: 8

Candidate Starts for Legolas_12:

(Start: 8 @11307 has 300 MA's), (17, 11328), (20, 11340), (23, 11352), (49, 11514), (61, 11583), (66, 11631), (80, 11703), (91, 11748), (96, 11772), (107, 11823), (122, 11877), (128, 11934), (133, 11973),

Gene: LeiMonet_13 Start: 11305, Stop: 12108, Start Num: 8

Candidate Starts for LeiMonet_13:

(Start: 8 @11305 has 300 MA's), (17, 11326), (20, 11338), (23, 11350), (49, 11512), (61, 11581), (66, 11629), (80, 11701), (91, 11746), (96, 11770), (107, 11821), (122, 11875), (128, 11932), (133, 11971),

Gene: LemonSlice_13 Start: 11313, Stop: 12116, Start Num: 8

Candidate Starts for LemonSlice_13:

(Start: 8 @11313 has 300 MA's), (17, 11334), (20, 11346), (23, 11358), (49, 11520), (61, 11589), (66, 11637), (80, 11709), (91, 11754), (96, 11778), (107, 11829), (122, 11883), (128, 11940), (133, 11979),

Gene: Lephleur_16 Start: 14532, Stop: 15350, Start Num: 5

Candidate Starts for Lephleur_16:

(Start: 5 @14532 has 33 MA's), (38, 14676), (49, 14757), (58, 14811), (59, 14817), (67, 14877), (74, 14916), (82, 14955), (92, 14994), (116, 15090), (123, 15138), (128, 15180), (132, 15216), (143, 15282),

Gene: LestyG_15 Start: 13144, Stop: 13953, Start Num: 7

Candidate Starts for LestyG_15:

(Start: 7 @13144 has 44 MA's), (28, 13207), (38, 13270), (53, 13366), (59, 13414), (61, 13420), (66, 13468), (80, 13540), (86, 13570), (89, 13573), (92, 13591), (104, 13651), (110, 13672), (123, 13738), (142, 13879), (143, 13882),

Gene: Ligma_12 Start: 11636, Stop: 12418, Start Num: 8

Candidate Starts for Ligma_12:

(Start: 8 @11636 has 300 MA's), (15, 11648), (32, 11726), (128, 12272), (129, 12287), (132, 12308), (139, 12350), (141, 12356), (146, 12395),

Gene: LilMcDreamy_14 Start: 14087, Stop: 14896, Start Num: 9

Candidate Starts for LilMcDreamy_14:

(Start: 9 @14087 has 10 MA's), (37, 14222), (38, 14240), (66, 14441), (69, 14462), (71, 14471), (75, 14489), (80, 14513), (123, 14705), (134, 14789), (141, 14831), (145, 14867),

Gene: LittleMunchkin_13 Start: 12925, Stop: 13710, Start Num: 8

Candidate Starts for LittleMunchkin_13:

(Start: 8 @12925 has 300 MA's), (32, 13018), (36, 13042), (67, 13261), (77, 13315), (92, 13378), (103, 13432), (125, 13540), (129, 13579), (136, 13618), (143, 13666),

Gene: LizLemon_16 Start: 14652, Stop: 15470, Start Num: 5

Candidate Starts for LizLemon_16:

(Start: 5 @14652 has 33 MA's), (38, 14796), (39, 14802), (58, 14931), (59, 14937), (67, 14997), (74, 15036), (82, 15075), (92, 15114), (116, 15210), (123, 15258), (128, 15300), (132, 15336), (143, 15402),

Gene: Lolalove_13 Start: 13343, Stop: 14137, Start Num: 8

Candidate Starts for Lolalove_13:

(Start: 8 @13343 has 300 MA's), (17, 13364), (20, 13376), (38, 13475), (59, 13613), (66, 13667), (69, 13688), (73, 13709), (75, 13715), (80, 13739), (92, 13802), (101, 13844), (123, 13940), (128, 13982), (134, 14024), (141, 14066), (149, 14114),

Gene: Longacauda_12 Start: 11305, Stop: 12102, Start Num: 8

Candidate Starts for Longacauda_12:

(Start: 8 @11305 has 300 MA's), (17, 11326), (20, 11338), (23, 11350), (61, 11581), (66, 11629), (80, 11701), (91, 11746), (96, 11770), (107, 11821), (122, 11875), (128, 11932), (133, 11971),

Gene: Lopsy_12 Start: 11149, Stop: 11952, Start Num: 8

Candidate Starts for Lopsy_12:

(Start: 8 @11149 has 300 MA's), (17, 11170), (20, 11182), (23, 11194), (49, 11356), (61, 11425), (66, 11473), (80, 11545), (91, 11590), (96, 11614), (107, 11665), (122, 11719), (128, 11776), (133, 11815),

Gene: LostAndPhound_12 Start: 11309, Stop: 12112, Start Num: 8

Candidate Starts for LostAndPhound_12:

(Start: 8 @11309 has 300 MA's), (17, 11330), (20, 11342), (23, 11354), (49, 11516), (61, 11585), (66, 11633), (80, 11705), (91, 11750), (96, 11774), (107, 11825), (122, 11879), (128, 11936), (133, 11975),

Gene: LuckyMarjie_12 Start: 11309, Stop: 12112, Start Num: 8

Candidate Starts for LuckyMarjie_12:

(Start: 8 @11309 has 300 MA's), (17, 11330), (20, 11342), (23, 11354), (49, 11516), (61, 11585), (66, 11633), (80, 11705), (91, 11750), (96, 11774), (107, 11825), (122, 11879), (128, 11936), (133, 11975),

Gene: Lulumae_12 Start: 11310, Stop: 12107, Start Num: 8

Candidate Starts for Lulumae_12:

(Start: 8 @11310 has 300 MA's), (17, 11331), (20, 11343), (23, 11355), (61, 11586), (66, 11634), (80, 11706), (91, 11751), (96, 11775), (107, 11826), (122, 11880), (128, 11937), (133, 11976),

Gene: Lulwa_13 Start: 11605, Stop: 12408, Start Num: 8

Candidate Starts for Lulwa_13:

(Start: 8 @11605 has 300 MA's), (17, 11626), (20, 11638), (23, 11650), (49, 11812), (61, 11881), (66, 11929), (80, 12001), (91, 12046), (96, 12070), (107, 12121), (122, 12175), (128, 12232), (133, 12271),

Gene: Lumine_12 Start: 11297, Stop: 12094, Start Num: 8

Candidate Starts for Lumine_12:

(Start: 8 @11297 has 300 MA's), (17, 11318), (20, 11330), (23, 11342), (61, 11573), (66, 11621), (80, 11693), (91, 11738), (96, 11762), (107, 11813), (122, 11867), (128, 11924), (133, 11963),

Gene: MRabcd_12 Start: 11306, Stop: 12109, Start Num: 8

Candidate Starts for MRabcd_12:

(Start: 8 @11306 has 300 MA's), (17, 11327), (20, 11339), (23, 11351), (49, 11513), (61, 11582), (66, 11630), (80, 11702), (91, 11747), (96, 11771), (107, 11822), (122, 11876), (128, 11933), (133, 11972),

Gene: Mag7_12 Start: 11161, Stop: 11958, Start Num: 8

Candidate Starts for Mag7_12:

(Start: 8 @11161 has 300 MA's), (17, 11182), (20, 11194), (23, 11206), (61, 11437), (66, 11485), (80, 11557), (91, 11602), (96, 11626), (107, 11677), (122, 11731), (128, 11788), (133, 11827),

Gene: Magic8_13 Start: 11599, Stop: 12396, Start Num: 8

Candidate Starts for Magic8_13:

(Start: 8 @11599 has 300 MA's), (17, 11620), (20, 11632), (23, 11644), (49, 11806), (61, 11875), (66, 11923), (80, 11995), (91, 12040), (96, 12064), (107, 12115), (122, 12169), (128, 12226), (133, 12265),

Gene: Magpie_13 Start: 13501, Stop: 14295, Start Num: 8

Candidate Starts for Magpie_13:

(Start: 8 @13501 has 300 MA's), (17, 13522), (38, 13633), (59, 13771), (66, 13825), (69, 13846), (73, 13867), (75, 13873), (92, 13960), (101, 14002), (123, 14098), (124, 14101), (128, 14140), (134, 14182), (141, 14224), (149, 14272),

Gene: MakoManhole_14 Start: 13114, Stop: 13887, Start Num: 8

Candidate Starts for MakoManhole_14:

(Start: 8 @13114 has 300 MA's), (38, 13246), (75, 13477), (90, 13543), (92, 13552), (123, 13696), (141, 13822), (142, 13837),

Gene: Mana_12 Start: 11309, Stop: 12112, Start Num: 8

Candidate Starts for Mana_12:

(Start: 8 @11309 has 300 MA's), (17, 11330), (20, 11342), (23, 11354), (49, 11516), (61, 11585), (66, 11633), (80, 11705), (91, 11750), (96, 11774), (107, 11825), (122, 11879), (128, 11936), (133, 11975),

Gene: Manad_12 Start: 11153, Stop: 11956, Start Num: 8

Candidate Starts for Manad_12:

(Start: 8 @11153 has 300 MA's), (17, 11174), (20, 11186), (23, 11198), (49, 11360), (61, 11429), (66, 11477), (80, 11549), (91, 11594), (96, 11618), (107, 11669), (122, 11723), (128, 11780), (133, 11819),

Gene: Mao1_10 Start: 10771, Stop: 11619, Start Num: 8

Candidate Starts for Mao1_10:

(Start: 8 @10771 has 300 MA's), (18, 10786), (38, 10897), (40, 10909), (45, 10942), (61, 11044), (66, 11092), (75, 11140), (80, 11164), (90, 11206), (96, 11233), (114, 11308), (118, 11314), (122, 11344), (123, 11359), (125, 11377), (134, 11443), (136, 11455), (139, 11479), (142, 11500), (149, 11533),

Gene: Mariokart_12 Start: 11678, Stop: 12469, Start Num: 8

Candidate Starts for Mariokart_12:

(Start: 8 @11678 has 300 MA's), (20, 11714), (32, 11768), (40, 11834), (62, 11972), (92, 12128), (123, 12272), (132, 12350), (142, 12413),

Gene: Marley1013_15 Start: 13924, Stop: 14733, Start Num: 7

Candidate Starts for Marley1013_15:

(Start: 7 @13924 has 44 MA's), (28, 13987), (38, 14050), (53, 14146), (59, 14194), (61, 14200), (66, 14248), (80, 14320), (86, 14350), (92, 14371), (104, 14431), (110, 14452), (123, 14518), (142, 14659), (143, 14662),

Gene: Maru_12 Start: 11307, Stop: 12110, Start Num: 8

Candidate Starts for Maru_12:

(Start: 8 @11307 has 300 MA's), (17, 11328), (20, 11340), (23, 11352), (49, 11514), (61, 11583), (66, 11631), (80, 11703), (91, 11748), (96, 11772), (107, 11823), (122, 11877), (128, 11934), (133, 11973),

Gene: Mask_11 Start: 10772, Stop: 11620, Start Num: 8

Candidate Starts for Mask_11:

(Start: 8 @10772 has 300 MA's), (18, 10787), (38, 10898), (40, 10910), (45, 10943), (61, 11045), (66, 11093), (75, 11141), (80, 11165), (90, 11207), (96, 11234), (114, 11309), (118, 11315), (122, 11345), (123, 11360), (125, 11378), (134, 11444), (136, 11456), (139, 11480), (142, 11501), (149, 11534),

Gene: Maskar_12 Start: 11149, Stop: 11946, Start Num: 8

Candidate Starts for Maskar_12:

(Start: 8 @11149 has 300 MA's), (17, 11170), (20, 11182), (23, 11194), (61, 11425), (66, 11473), (80, 11545), (91, 11590), (96, 11614), (107, 11665), (122, 11719), (128, 11776), (133, 11815),

Gene: MasterPo_16 Start: 14532, Stop: 15350, Start Num: 5

Candidate Starts for MasterPo_16:

(Start: 5 @14532 has 33 MA's), (38, 14676), (49, 14757), (58, 14811), (59, 14817), (67, 14877), (74, 14916), (82, 14955), (92, 14994), (116, 15090), (123, 15138), (128, 15180), (132, 15216), (143, 15282),

Gene: Matalotodo_12 Start: 11603, Stop: 12400, Start Num: 8

Candidate Starts for Matalotodo_12:

(Start: 8 @11603 has 300 MA's), (17, 11624), (20, 11636), (23, 11648), (49, 11810), (61, 11879), (66, 11927), (80, 11999), (91, 12044), (96, 12068), (107, 12119), (122, 12173), (128, 12230), (133, 12269),

Gene: Mcshane_12 Start: 11309, Stop: 12106, Start Num: 8

Candidate Starts for Mcshane_12:

(Start: 8 @11309 has 300 MA's), (17, 11330), (20, 11342), (23, 11354), (49, 11516), (61, 11585), (66, 11633), (80, 11705), (91, 11750), (96, 11774), (107, 11825), (122, 11879), (128, 11936), (133, 11975),

Gene: Mecca_12 Start: 11306, Stop: 12103, Start Num: 8

Candidate Starts for Mecca_12:

(Start: 8 @11306 has 300 MA's), (17, 11327), (20, 11339), (23, 11351), (49, 11513), (61, 11582), (66, 11630), (80, 11702), (91, 11747), (96, 11771), (107, 11822), (122, 11876), (128, 11933), (133, 11972),

Gene: Megabear_10 Start: 12673, Stop: 13449, Start Num: 8

Candidate Starts for Megabear_10:

(Start: 8 @12673 has 300 MA's), (20, 12694), (21, 12697), (26, 12715), (32, 12748), (39, 12802), (40, 12808), (45, 12841), (66, 12988), (70, 13012), (71, 13018), (90, 13102), (109, 13186), (120, 13228), (132, 13333), (134, 13339), (143, 13399),

Gene: Megamind20_13 Start: 11310, Stop: 12113, Start Num: 8

Candidate Starts for Megamind20_13:

(Start: 8 @11310 has 300 MA's), (17, 11331), (20, 11343), (23, 11355), (49, 11517), (61, 11586), (66, 11634), (80, 11706), (91, 11751), (96, 11775), (107, 11826), (122, 11880), (128, 11937), (133, 11976),

Gene: Megatron_13 Start: 11602, Stop: 12405, Start Num: 8

Candidate Starts for Megatron_13:

(Start: 8 @11602 has 300 MA's), (17, 11623), (20, 11635), (23, 11647), (49, 11809), (61, 11878), (66, 11926), (80, 11998), (91, 12043), (96, 12067), (107, 12118), (122, 12172), (128, 12229), (133, 12268),

Gene: Melc17_13 Start: 11599, Stop: 12396, Start Num: 8

Candidate Starts for Melc17_13:

(Start: 8 @11599 has 300 MA's), (17, 11620), (20, 11632), (23, 11644), (49, 11806), (61, 11875), (66, 11923), (80, 11995), (91, 12040), (96, 12064), (107, 12115), (122, 12169), (128, 12226), (133, 12265),

Gene: MelsMeow_12 Start: 11155, Stop: 11952, Start Num: 8

Candidate Starts for MelsMeow_12:

(Start: 8 @11155 has 300 MA's), (17, 11176), (20, 11188), (23, 11200), (61, 11431), (66, 11479), (80, 11551), (91, 11596), (96, 11620), (107, 11671), (122, 11725), (128, 11782), (133, 11821),

Gene: Mesh1_13 Start: 11605, Stop: 12408, Start Num: 8

Candidate Starts for Mesh1_13:

(Start: 8 @11605 has 300 MA's), (17, 11626), (20, 11638), (23, 11650), (49, 11812), (61, 11881), (66, 11929), (80, 12001), (91, 12046), (96, 12070), (107, 12121), (122, 12175), (128, 12232), (133, 12271),

Gene: MichaelPhcott_12 Start: 11161, Stop: 11958, Start Num: 8

Candidate Starts for MichaelPhcott_12:

(Start: 8 @11161 has 300 MA's), (17, 11182), (20, 11194), (23, 11206), (61, 11437), (66, 11485), (80, 11557), (91, 11602), (96, 11626), (107, 11677), (122, 11731), (128, 11788), (133, 11827),

Gene: Mikota_13 Start: 11600, Stop: 12403, Start Num: 8

Candidate Starts for Mikota_13:

(Start: 8 @11600 has 300 MA's), (17, 11621), (20, 11633), (23, 11645), (49, 11807), (61, 11876), (66, 11924), (80, 11996), (91, 12041), (96, 12065), (107, 12116), (122, 12170), (128, 12227), (133, 12266),

Gene: MiniBoss_13 Start: 11602, Stop: 12405, Start Num: 8

Candidate Starts for MiniBoss_13:

(Start: 8 @11602 has 300 MA's), (17, 11623), (20, 11635), (23, 11647), (49, 11809), (61, 11878), (66, 11926), (80, 11998), (91, 12043), (96, 12067), (107, 12118), (122, 12172), (128, 12229), (133, 12268),

Gene: MitKao_13 Start: 11309, Stop: 12112, Start Num: 8

Candidate Starts for MitKao_13:

(Start: 8 @11309 has 300 MA's), (17, 11330), (20, 11342), (23, 11354), (49, 11516), (61, 11585), (66, 11633), (80, 11705), (91, 11750), (96, 11774), (107, 11825), (122, 11879), (128, 11936), (133, 11975),

Gene: Mithril_13 Start: 13346, Stop: 14140, Start Num: 8

Candidate Starts for Mithril_13:

(Start: 8 @13346 has 300 MA's), (17, 13367), (20, 13379), (38, 13478), (59, 13616), (66, 13670), (69, 13691), (73, 13712), (75, 13718), (80, 13742), (92, 13805), (101, 13847), (123, 13943), (128, 13985), (134, 14027), (141, 14069), (149, 14117),

Gene: MmasiCarm_15 Start: 13137, Stop: 13946, Start Num: 7

Candidate Starts for MmasiCarm_15:

(Start: 7 @13137 has 44 MA's), (28, 13200), (38, 13263), (53, 13359), (59, 13407), (61, 13413), (66, 13461), (80, 13533), (86, 13563), (92, 13584), (104, 13644), (110, 13665), (123, 13731), (142, 13872), (143, 13875),

Gene: Morgushi_13 Start: 11307, Stop: 12110, Start Num: 8

Candidate Starts for Morgushi_13:

(Start: 8 @11307 has 300 MA's), (17, 11328), (20, 11340), (23, 11352), (49, 11514), (61, 11583), (66, 11631), (80, 11703), (91, 11748), (96, 11772), (107, 11823), (122, 11877), (128, 11934), (133, 11973),

Gene: Mortcellus_14 Start: 13778, Stop: 14587, Start Num: 7

Candidate Starts for Mortcellus_14:

(Start: 7 @13778 has 44 MA's), (28, 13841), (38, 13904), (53, 14000), (59, 14048), (61, 14054), (66, 14102), (80, 14174), (86, 14204), (92, 14225), (104, 14285), (110, 14306), (123, 14372), (142, 14513), (143, 14516),

Gene: Morty_13 Start: 11599, Stop: 12402, Start Num: 8

Candidate Starts for Morty_13:

(Start: 8 @11599 has 300 MA's), (17, 11620), (20, 11632), (23, 11644), (49, 11806), (61, 11875), (66, 11923), (80, 11995), (91, 12040), (96, 12064), (107, 12115), (122, 12169), (128, 12226), (133, 12265),

Gene: Morty007_15 Start: 13924, Stop: 14733, Start Num: 7

Candidate Starts for Morty007_15:

(Start: 7 @13924 has 44 MA's), (28, 13987), (38, 14050), (53, 14146), (59, 14194), (61, 14200), (66, 14248), (80, 14320), (86, 14350), (92, 14371), (104, 14431), (110, 14452), (123, 14518), (142, 14659), (143, 14662),

Gene: Mosaic_12 Start: 11310, Stop: 12113, Start Num: 8

Candidate Starts for Mosaic_12:

(Start: 8 @11310 has 300 MA's), (17, 11331), (20, 11343), (23, 11355), (49, 11517), (61, 11586), (66, 11634), (80, 11706), (91, 11751), (96, 11775), (107, 11826), (122, 11880), (128, 11937), (133, 11976),

Gene: MossRose_14 Start: 13114, Stop: 13887, Start Num: 8

Candidate Starts for MossRose_14:

(Start: 8 @13114 has 300 MA's), (38, 13246), (75, 13477), (90, 13543), (92, 13552), (123, 13696), (141, 13822), (142, 13837),

Gene: MrPhizzler_12 Start: 11302, Stop: 12105, Start Num: 8

Candidate Starts for MrPhizzler_12:

(Start: 8 @11302 has 300 MA's), (17, 11323), (20, 11335), (23, 11347), (49, 11509), (61, 11578), (66, 11626), (80, 11698), (91, 11743), (96, 11767), (107, 11818), (122, 11872), (128, 11929), (133, 11968),

Gene: Mudslide_13 Start: 13594, Stop: 14388, Start Num: 8

Candidate Starts for Mudslide_13:

(Start: 8 @13594 has 300 MA's), (17, 13615), (20, 13627), (38, 13726), (59, 13864), (66, 13918), (69, 13939), (73, 13960), (75, 13966), (80, 13990), (92, 14053), (101, 14095), (123, 14191), (124, 14194), (128, 14233), (134, 14275), (141, 14317), (149, 14365),

Gene: Mulan_12 Start: 11309, Stop: 12106, Start Num: 8

Candidate Starts for Mulan_12:

(Start: 8 @11309 has 300 MA's), (17, 11330), (20, 11342), (23, 11354), (49, 11516), (61, 11585), (66, 11633), (80, 11705), (91, 11750), (96, 11774), (107, 11825), (122, 11879), (128, 11936), (133, 11975),

Gene: Murdoc_13 Start: 11602, Stop: 12399, Start Num: 8

Candidate Starts for Murdoc_13:

(Start: 8 @11602 has 300 MA's), (17, 11623), (20, 11635), (23, 11647), (49, 11809), (61, 11878), (66, 11926), (80, 11998), (91, 12043), (96, 12067), (107, 12118), (122, 12172), (128, 12229), (133, 12268),

Gene: Mutante_12 Start: 11306, Stop: 12109, Start Num: 8

Candidate Starts for Mutante_12:

(Start: 8 @11306 has 300 MA's), (17, 11327), (20, 11339), (23, 11351), (49, 11513), (61, 11582), (66, 11630), (80, 11702), (91, 11747), (96, 11771), (107, 11822), (122, 11876), (128, 11933), (133, 11972),

Gene: Mysterious_14 Start: 13592, Stop: 14398, Start Num: 9

Candidate Starts for Mysterious_14:

(Start: 9 @13592 has 10 MA's), (17, 13604), (34, 13682), (60, 13886), (61, 13889), (66, 13937), (69, 13958), (80, 14009), (94, 14072), (111, 14144), (123, 14201), (139, 14321),

Gene: NHagos_12 Start: 11599, Stop: 12372, Start Num: 8

Candidate Starts for NHagos_12:

(Start: 8 @11599 has 300 MA's), (20, 11629), (33, 11686), (38, 11731), (46, 11785), (92, 12037), (123, 12181), (139, 12301), (143, 12325),

Gene: Nacho_0013 Start: 11602, Stop: 12405, Start Num: 8

Candidate Starts for Nacho_0013:

(Start: 8 @11602 has 300 MA's), (17, 11623), (20, 11635), (23, 11647), (49, 11809), (61, 11878), (66, 11926), (80, 11998), (91, 12043), (96, 12067), (107, 12118), (122, 12172), (128, 12229), (133, 12268),

Gene: Nanao_12 Start: 12252, Stop: 13046, Start Num: 8

Candidate Starts for Nanao_12:

(Start: 8 @12252 has 300 MA's), (17, 12273), (19, 12282), (31, 12339), (38, 12384), (59, 12522), (66, 12576), (69, 12597), (73, 12618), (75, 12624), (92, 12711), (101, 12753), (123, 12849), (125, 12867), (128, 12891), (134, 12933), (141, 12975), (149, 13023),

Gene: Nangang_14 Start: 13334, Stop: 14140, Start Num: 9

Candidate Starts for Nangang_14:

(Start: 9 @13334 has 10 MA's), (34, 13424), (60, 13628), (71, 13709), (80, 13751), (94, 13814), (97, 13826), (111, 13886), (123, 13943), (128, 13985), (139, 14063), (149, 14117),

Gene: Neos5_15 Start: 13930, Stop: 14739, Start Num: 7

Candidate Starts for Neos5_15:

(Start: 7 @13930 has 44 MA's), (28, 13993), (38, 14056), (53, 14152), (59, 14200), (61, 14206), (66, 14254), (80, 14326), (86, 14356), (92, 14377), (104, 14437), (110, 14458), (123, 14524), (142, 14665), (143, 14668),

Gene: Newman_13 Start: 11602, Stop: 12405, Start Num: 8

Candidate Starts for Newman_13:

(Start: 8 @11602 has 300 MA's), (17, 11623), (20, 11635), (23, 11647), (49, 11809), (61, 11878), (66, 11926), (80, 11998), (91, 12043), (96, 12067), (107, 12118), (122, 12172), (128, 12229), (133, 12268),

Gene: Nicole21_13 Start: 11600, Stop: 12397, Start Num: 8

Candidate Starts for Nicole21_13:

(Start: 8 @11600 has 300 MA's), (17, 11621), (20, 11633), (23, 11645), (49, 11807), (61, 11876), (66, 11924), (80, 11996), (91, 12041), (96, 12065), (107, 12116), (122, 12170), (128, 12227), (133, 12266),

Gene: Nigel_11 Start: 12164, Stop: 12961, Start Num: 8

Candidate Starts for Nigel_11:

(Start: 8 @12164 has 300 MA's), (17, 12182), (19, 12191), (31, 12248), (38, 12293), (59, 12431), (66, 12485), (69, 12506), (73, 12527), (75, 12533), (101, 12662), (122, 12749), (123, 12764), (125, 12782), (128, 12806), (134, 12848), (141, 12890), (149, 12938),

Gene: Nozo_15 Start: 13905, Stop: 14714, Start Num: 7

Candidate Starts for Nozo_15:

(Start: 7 @13905 has 44 MA's), (28, 13968), (38, 14031), (53, 14127), (59, 14175), (61, 14181), (66, 14229), (80, 14301), (86, 14331), (92, 14352), (104, 14412), (110, 14433), (123, 14499), (142, 14640), (143, 14643),

Gene: Numberten_13 Start: 11605, Stop: 12408, Start Num: 8

Candidate Starts for Numberten_13:

(Start: 8 @11605 has 300 MA's), (17, 11626), (20, 11638), (23, 11650), (49, 11812), (61, 11881), (66, 11929), (80, 12001), (91, 12046), (96, 12070), (107, 12121), (122, 12175), (128, 12232), (133, 12271),

Gene: Nyala_12 Start: 11310, Stop: 12107, Start Num: 8

Candidate Starts for Nyala_12:

(Start: 8 @11310 has 300 MA's), (17, 11331), (20, 11343), (23, 11355), (49, 11517), (61, 11586), (66, 11634), (80, 11706), (91, 11751), (96, 11775), (107, 11826), (122, 11880), (128, 11937), (133, 11976),

Gene: OSmaximus_13 Start: 11600, Stop: 12403, Start Num: 8

Candidate Starts for OSmaximus_13:

(Start: 8 @11600 has 300 MA's), (17, 11621), (20, 11633), (23, 11645), (49, 11807), (61, 11876), (66, 11924), (80, 11996), (91, 12041), (96, 12065), (107, 12116), (122, 12170), (128, 12227), (133, 12266),

Gene: Obutu_15 Start: 13135, Stop: 13944, Start Num: 7

Candidate Starts for Obutu_15:

(Start: 7 @13135 has 44 MA's), (28, 13198), (38, 13261), (53, 13357), (59, 13405), (61, 13411), (66, 13459), (80, 13531), (86, 13561), (92, 13582), (104, 13642), (110, 13663), (123, 13729), (142, 13870), (143, 13873),

Gene: Olak_12 Start: 11307, Stop: 12104, Start Num: 8

Candidate Starts for Olak_12:

(Start: 8 @11307 has 300 MA's), (17, 11328), (20, 11340), (23, 11352), (49, 11514), (61, 11583), (66, 11631), (80, 11703), (91, 11748), (96, 11772), (107, 11823), (122, 11877), (128, 11934), (133, 11973),

Gene: Oline_12 Start: 11161, Stop: 11958, Start Num: 8

Candidate Starts for Oline_12:

(Start: 8 @11161 has 300 MA's), (17, 11182), (20, 11194), (23, 11206), (49, 11368), (61, 11437), (66, 11485), (80, 11557), (91, 11602), (96, 11626), (107, 11677), (122, 11731), (128, 11788), (133, 11827),

Gene: Olive_13 Start: 11599, Stop: 12402, Start Num: 8

Candidate Starts for Olive_13:

(Start: 8 @11599 has 300 MA's), (17, 11620), (20, 11632), (23, 11644), (61, 11875), (66, 11923), (80, 11995), (91, 12040), (96, 12064), (107, 12115), (122, 12169), (128, 12226), (133, 12265),

Gene: OliverWalter_13 Start: 11598, Stop: 12401, Start Num: 8

Candidate Starts for OliverWalter_13:

(Start: 8 @11598 has 300 MA's), (17, 11619), (20, 11631), (23, 11643), (49, 11805), (61, 11874), (66, 11922), (80, 11994), (91, 12039), (96, 12063), (107, 12114), (122, 12168), (128, 12225), (133, 12264),

Gene: Omniscient_13 Start: 11605, Stop: 12408, Start Num: 8

Candidate Starts for Omniscient_13:

(Start: 8 @11605 has 300 MA's), (17, 11626), (20, 11638), (23, 11650), (49, 11812), (61, 11881), (66, 11929), (80, 12001), (91, 12046), (96, 12070), (107, 12121), (122, 12175), (128, 12232), (133, 12271),

Gene: Oosterbaan_13 Start: 11603, Stop: 12400, Start Num: 8

Candidate Starts for Oosterbaan_13:

(Start: 8 @11603 has 300 MA's), (17, 11624), (20, 11636), (23, 11648), (49, 11810), (61, 11879), (66, 11927), (80, 11999), (91, 12044), (96, 12068), (107, 12119), (122, 12173), (128, 12230), (133, 12269),

Gene: Opia_16 Start: 14532, Stop: 15350, Start Num: 5

Candidate Starts for Opia_16:

(Start: 5 @14532 has 33 MA's), (38, 14676), (49, 14757), (58, 14811), (59, 14817), (67, 14877), (74, 14916), (82, 14955), (92, 14994), (116, 15090), (123, 15138), (128, 15180), (132, 15216), (143, 15282),

Gene: OrangeOswald_15 Start: 13140, Stop: 13949, Start Num: 7

Candidate Starts for OrangeOswald_15:

(Start: 7 @13140 has 44 MA's), (28, 13203), (38, 13266), (53, 13362), (59, 13410), (61, 13416), (66, 13464), (80, 13536), (86, 13566), (92, 13587), (104, 13647), (110, 13668), (123, 13734), (142, 13875), (143, 13878),

Gene: Orfeu_12 Start: 11308, Stop: 12105, Start Num: 8

Candidate Starts for Orfeu_12:

(Start: 8 @11308 has 300 MA's), (17, 11329), (20, 11341), (23, 11353), (61, 11584), (66, 11632), (80, 11704), (91, 11749), (96, 11773), (107, 11824), (122, 11878), (128, 11935), (133, 11974),

Gene: Orion_13 Start: 11603, Stop: 12400, Start Num: 8

Candidate Starts for Orion_13:

(Start: 8 @11603 has 300 MA's), (17, 11624), (20, 11636), (23, 11648), (49, 11810), (61, 11879), (66, 11927), (80, 11999), (91, 12044), (96, 12068), (107, 12119), (122, 12173), (128, 12230), (133, 12269),

Gene: Orwigg_13 Start: 11313, Stop: 12110, Start Num: 8

Candidate Starts for Orwigg_13:

(Start: 8 @11313 has 300 MA's), (17, 11334), (20, 11346), (23, 11358), (49, 11520), (61, 11589), (66, 11637), (80, 11709), (91, 11754), (96, 11778), (107, 11829), (122, 11883), (128, 11940), (133, 11979),

Gene: PG1_13 Start: 11603, Stop: 12406, Start Num: 8

Candidate Starts for PG1_13:

(Start: 8 @11603 has 300 MA's), (17, 11624), (20, 11636), (23, 11648), (49, 11810), (61, 11879), (66, 11927), (80, 11999), (91, 12044), (96, 12068), (107, 12119), (122, 12173), (128, 12230), (133, 12269),

Gene: PR_10 Start: 12685, Stop: 13461, Start Num: 8

Candidate Starts for PR_10:

(Start: 8 @12685 has 300 MA's), (20, 12706), (21, 12709), (26, 12727), (32, 12760), (39, 12814), (40, 12820), (45, 12853), (66, 13000), (70, 13024), (71, 13030), (90, 13114), (109, 13198), (120, 13240), (132, 13345), (134, 13351), (143, 13411),

Gene: Pacifista_14 Start: 11306, Stop: 12103, Start Num: 8

Candidate Starts for Pacifista_14:

(Start: 8 @11306 has 300 MA's), (17, 11327), (20, 11339), (23, 11351), (49, 11513), (61, 11582), (66, 11630), (80, 11702), (91, 11747), (96, 11771), (107, 11822), (122, 11876), (128, 11933), (133, 11972),

Gene: PenguinLover67_16 Start: 14236, Stop: 15033, Start Num: 3

Candidate Starts for PenguinLover67_16:

(Start: 3 @14236 has 2 MA's), (17, 14275), (20, 14287), (38, 14383), (52, 14470), (56, 14506), (59, 14518), (71, 14602), (92, 14704), (97, 14725), (123, 14842), (126, 14878), (128, 14884), (141, 14968), (146, 15007), (149, 15016),

Gene: Phaedrus_14 Start: 13057, Stop: 13866, Start Num: 7

Candidate Starts for Phaedrus_14:

(Start: 7 @13057 has 44 MA's), (28, 13120), (38, 13183), (53, 13279), (59, 13327), (61, 13333), (66, 13381), (80, 13453), (86, 13483), (92, 13504), (104, 13564), (110, 13585), (123, 13651), (142, 13792), (143, 13795),

Gene: Phamished_13 Start: 11602, Stop: 12405, Start Num: 8

Candidate Starts for Phamished_13:

(Start: 8 @11602 has 300 MA's), (17, 11623), (20, 11635), (23, 11647), (49, 11809), (61, 11878), (66, 11926), (80, 11998), (91, 12043), (96, 12067), (107, 12118), (122, 12172), (128, 12229), (133, 12268),

Gene: Phantasmagoria_16 Start: 14532, Stop: 15350, Start Num: 5

Candidate Starts for Phantasmagoria_16:

(Start: 5 @14532 has 33 MA's), (38, 14676), (49, 14757), (58, 14811), (59, 14817), (67, 14877), (74, 14916), (82, 14955), (92, 14994), (116, 15090), (123, 15138), (128, 15180), (132, 15216), (143, 15282),

Gene: Phareon_13 Start: 11309, Stop: 12112, Start Num: 8

Candidate Starts for Phareon_13:

(Start: 8 @11309 has 300 MA's), (17, 11330), (20, 11342), (23, 11354), (49, 11516), (61, 11585), (66, 11633), (80, 11705), (91, 11750), (96, 11774), (107, 11825), (122, 11879), (128, 11936), (133, 11975),

Gene: PhatCats2014_13 Start: 11606, Stop: 12409, Start Num: 8

Candidate Starts for PhatCats2014_13:

(Start: 8 @11606 has 300 MA's), (17, 11627), (20, 11639), (23, 11651), (49, 11813), (61, 11882), (66, 11930), (80, 12002), (91, 12047), (96, 12071), (107, 12122), (122, 12176), (128, 12233), (133, 12272),

Gene: PhatLouie_13 Start: 11602, Stop: 12399, Start Num: 8

Candidate Starts for PhatLouie_13:

(Start: 8 @11602 has 300 MA's), (17, 11623), (20, 11635), (23, 11647), (49, 11809), (61, 11878), (66, 11926), (80, 11998), (91, 12043), (96, 12067), (107, 12118), (122, 12172), (128, 12229), (133, 12268),

Gene: Phayeta_15 Start: 13016, Stop: 13825, Start Num: 7

Candidate Starts for Phayeta_15:

(Start: 7 @13016 has 44 MA's), (28, 13079), (38, 13142), (53, 13238), (59, 13286), (61, 13292), (66, 13340), (80, 13412), (86, 13442), (92, 13463), (104, 13523), (110, 13544), (123, 13610), (142, 13751), (143, 13754),

Gene: Phelemich_14 Start: 13595, Stop: 14401, Start Num: 9

Candidate Starts for Phelemich_14:

(Start: 9 @13595 has 10 MA's), (17, 13607), (34, 13685), (60, 13889), (61, 13892), (66, 13940), (69, 13961), (80, 14012), (94, 14075), (111, 14147), (123, 14204), (139, 14324),

Gene: PhenghisKhan_12 Start: 11161, Stop: 11958, Start Num: 8

Candidate Starts for PhenghisKhan_12:

(Start: 8 @11161 has 300 MA's), (17, 11182), (20, 11194), (23, 11206), (61, 11437), (66, 11485), (80, 11557), (91, 11602), (96, 11626), (107, 11677), (122, 11731), (128, 11788), (133, 11827),

Gene: Pherdinand_13 Start: 11600, Stop: 12403, Start Num: 8

Candidate Starts for Pherdinand_13:

(Start: 8 @11600 has 300 MA's), (17, 11621), (20, 11633), (23, 11645), (49, 11807), (61, 11876), (66, 11924), (80, 11996), (91, 12041), (96, 12065), (107, 12116), (122, 12170), (128, 12227), (133, 12266),

Gene: Phergie_12 Start: 11155, Stop: 11952, Start Num: 8

Candidate Starts for Phergie_12:

(Start: 8 @11155 has 300 MA's), (17, 11176), (20, 11188), (23, 11200), (61, 11431), (66, 11479), (80, 11551), (91, 11596), (96, 11620), (107, 11671), (122, 11725), (128, 11782), (133, 11821),

Gene: Philly_14 Start: 13006, Stop: 13815, Start Num: 7

Candidate Starts for Philly_14:

(Start: 7 @13006 has 44 MA's), (28, 13069), (38, 13132), (53, 13228), (59, 13276), (61, 13282), (66, 13330), (80, 13402), (86, 13432), (89, 13435), (92, 13453), (104, 13513), (110, 13534), (123, 13600), (142, 13741), (143, 13744),

Gene: Phipps_13 Start: 11593, Stop: 12396, Start Num: 8

Candidate Starts for Phipps_13:

(Start: 8 @11593 has 300 MA's), (17, 11614), (20, 11626), (23, 11638), (49, 11800), (61, 11869), (66, 11917), (80, 11989), (91, 12034), (96, 12058), (107, 12109), (122, 12163), (128, 12220), (133, 12259),

Gene: Phleuron_12 Start: 11161, Stop: 11958, Start Num: 8

Candidate Starts for Phleuron_12:

(Start: 8 @11161 has 300 MA's), (17, 11182), (20, 11194), (23, 11206), (61, 11437), (66, 11485), (80, 11557), (91, 11602), (96, 11626), (107, 11677), (122, 11731), (128, 11788), (133, 11827),

Gene: Phlyer_15 Start: 13874, Stop: 14683, Start Num: 7

Candidate Starts for Phlyer_15:

(Start: 7 @13874 has 44 MA's), (28, 13937), (38, 14000), (53, 14096), (59, 14144), (61, 14150), (66, 14198), (80, 14270), (86, 14300), (92, 14321), (104, 14381), (110, 14402), (123, 14468), (142, 14609), (143, 14612),

Gene: PhrankReynolds_12 Start: 11161, Stop: 11958, Start Num: 8

Candidate Starts for PhrankReynolds_12:

(Start: 8 @11161 has 300 MA's), (17, 11182), (20, 11194), (23, 11206), (61, 11437), (66, 11485), (80, 11557), (91, 11602), (96, 11626), (107, 11677), (122, 11731), (128, 11788), (133, 11827),

Gene: PhrodoBaggins_12 Start: 11602, Stop: 12399, Start Num: 8

Candidate Starts for PhrodoBaggins_12:

(Start: 8 @11602 has 300 MA's), (17, 11623), (20, 11635), (23, 11647), (49, 11809), (61, 11878), (66, 11926), (80, 11998), (91, 12043), (96, 12067), (107, 12118), (122, 12172), (128, 12229), (133, 12268),

Gene: Phunky_13 Start: 11602, Stop: 12399, Start Num: 8

Candidate Starts for Phunky_13:

(Start: 8 @11602 has 300 MA's), (17, 11623), (20, 11635), (23, 11647), (61, 11878), (66, 11926), (80, 11998), (91, 12043), (96, 12067), (107, 12118), (122, 12172), (128, 12229), (133, 12268),

Gene: Piglet_0012 Start: 11605, Stop: 12408, Start Num: 8

Candidate Starts for Piglet_0012:

(Start: 8 @11605 has 300 MA's), (17, 11626), (20, 11638), (23, 11650), (49, 11812), (61, 11881), (66, 11929), (80, 12001), (91, 12046), (96, 12070), (107, 12121), (122, 12175), (128, 12232), (133, 12271),

Gene: Pine5_15 Start: 13043, Stop: 13927, Start Num: 16

Candidate Starts for Pine5_15:

(16, 13043), (42, 13181), (57, 13280), (60, 13295), (73, 13385), (78, 13412), (79, 13415), (81, 13427), (85, 13439), (93, 13475), (98, 13496), (125, 13631), (135, 13709), (140, 13766), (141, 13769),

Gene: PinheadLarry_13 Start: 11309, Stop: 12112, Start Num: 8

Candidate Starts for PinheadLarry_13:

(Start: 8 @11309 has 300 MA's), (17, 11330), (20, 11342), (23, 11354), (49, 11516), (61, 11585), (66, 11633), (80, 11705), (91, 11750), (96, 11774), (107, 11825), (122, 11879), (128, 11936), (133, 11975),

Gene: Pinkman_12 Start: 11161, Stop: 11958, Start Num: 8

Candidate Starts for Pinkman_12:

(Start: 8 @11161 has 300 MA's), (17, 11182), (20, 11194), (23, 11206), (61, 11437), (66, 11485), (80, 11557), (91, 11602), (96, 11626), (107, 11677), (122, 11731), (128, 11788), (133, 11827),

Gene: Pipefish_15 Start: 14024, Stop: 14833, Start Num: 7

Candidate Starts for Pipefish_15:

(Start: 7 @14024 has 44 MA's), (28, 14087), (38, 14150), (53, 14246), (59, 14294), (61, 14300), (66, 14348), (80, 14420), (86, 14450), (89, 14453), (92, 14471), (104, 14531), (110, 14552), (123, 14618), (142, 14759), (143, 14762),

Gene: Pipsqueak_13 Start: 11602, Stop: 12405, Start Num: 8

Candidate Starts for Pipsqueak_13:

(Start: 8 @11602 has 300 MA's), (17, 11623), (20, 11635), (23, 11647), (49, 11809), (61, 11878), (66, 11926), (80, 11998), (91, 12043), (96, 12067), (107, 12118), (122, 12172), (128, 12229), (133, 12268),

Gene: Placalicious_12 Start: 11309, Stop: 12106, Start Num: 8

Candidate Starts for Placalicious_12:

(Start: 8 @11309 has 300 MA's), (17, 11330), (20, 11342), (23, 11354), (49, 11516), (61, 11585), (66, 11633), (80, 11705), (91, 11750), (96, 11774), (107, 11825), (122, 11879), (128, 11936), (133, 11975),

Gene: Plmatters_13 Start: 11602, Stop: 12405, Start Num: 8

Candidate Starts for Plmatters_13:

(Start: 8 @11602 has 300 MA's), (17, 11623), (20, 11635), (23, 11647), (49, 11809), (61, 11878), (66, 11926), (80, 11998), (91, 12043), (96, 12067), (107, 12118), (122, 12172), (128, 12229), (133, 12268),

Gene: Podrick_13 Start: 11605, Stop: 12408, Start Num: 8

Candidate Starts for Podrick_13:

(Start: 8 @11605 has 300 MA's), (17, 11626), (20, 11638), (23, 11650), (49, 11812), (61, 11881), (66, 11929), (80, 12001), (91, 12046), (96, 12070), (107, 12121), (122, 12175), (128, 12232), (133, 12271),

Gene: Pops_13 Start: 11599, Stop: 12402, Start Num: 8

Candidate Starts for Pops_13:

(Start: 8 @11599 has 300 MA's), (17, 11620), (20, 11632), (23, 11644), (49, 11806), (61, 11875), (66, 11923), (80, 11995), (91, 12040), (96, 12064), (107, 12115), (122, 12169), (128, 12226), (133, 12265),

Gene: Poster_12 Start: 12252, Stop: 13046, Start Num: 8

Candidate Starts for Poster_12:

(Start: 8 @12252 has 300 MA's), (17, 12273), (19, 12282), (31, 12339), (38, 12384), (59, 12522), (66, 12576), (69, 12597), (73, 12618), (75, 12624), (92, 12711), (101, 12753), (123, 12849), (125, 12867), (128, 12891), (134, 12933), (141, 12975), (149, 13023),

Gene: Potter_12 Start: 11310, Stop: 12113, Start Num: 8

Candidate Starts for Potter_12:

(Start: 8 @11310 has 300 MA's), (17, 11331), (20, 11343), (23, 11355), (49, 11517), (61, 11586), (66, 11634), (80, 11706), (91, 11751), (96, 11775), (107, 11826), (122, 11880), (128, 11937), (133, 11976),

Gene: Prickles_13 Start: 11608, Stop: 12411, Start Num: 8

Candidate Starts for Prickles_13:

(Start: 8 @11608 has 300 MA's), (17, 11629), (20, 11641), (23, 11653), (49, 11815), (61, 11884), (66, 11932), (80, 12004), (91, 12049), (96, 12073), (107, 12124), (122, 12178), (128, 12235), (133, 12274),

Gene: Prince_14 Start: 13506, Stop: 14300, Start Num: 8

Candidate Starts for Prince_14:

(Start: 8 @13506 has 300 MA's), (17, 13527), (20, 13539), (38, 13638), (59, 13776), (66, 13830), (69, 13851), (73, 13872), (75, 13878), (80, 13902), (92, 13965), (101, 14007), (123, 14103), (124, 14106), (128, 14145), (134, 14187), (141, 14229), (149, 14277),

Gene: ProfessorX_13 Start: 11600, Stop: 12397, Start Num: 8

Candidate Starts for ProfessorX_13:

(Start: 8 @11600 has 300 MA's), (17, 11621), (20, 11633), (23, 11645), (49, 11807), (61, 11876), (66, 11924), (80, 11996), (91, 12041), (96, 12065), (107, 12116), (122, 12170), (128, 12227), (133, 12266),

Gene: Puhltonio_13 Start: 11593, Stop: 12396, Start Num: 8

Candidate Starts for Puhltonio_13:

(Start: 8 @11593 has 300 MA's), (17, 11614), (20, 11626), (23, 11638), (49, 11800), (61, 11869), (66, 11917), (80, 11989), (91, 12034), (96, 12058), (107, 12109), (122, 12163), (128, 12220), (133, 12259),

Gene: QueenBeane_13 Start: 11602, Stop: 12399, Start Num: 8

Candidate Starts for QueenBeane_13:

(Start: 8 @11602 has 300 MA's), (17, 11623), (20, 11635), (23, 11647), (49, 11809), (61, 11878), (66, 11926), (80, 11998), (91, 12043), (96, 12067), (107, 12118), (122, 12172), (128, 12229), (133, 12268),

Gene: Quesadilla_15 Start: 14040, Stop: 14831, Start Num: 5

Candidate Starts for Quesadilla_15:

(Start: 5 @14040 has 33 MA's), (20, 14085), (38, 14181), (52, 14268), (56, 14304), (59, 14316), (71, 14400), (92, 14502), (97, 14523), (100, 14541), (126, 14676), (128, 14682), (149, 14814),

Gene: Quisquilliae_13 Start: 11605, Stop: 12408, Start Num: 8

Candidate Starts for Quisquilliae_13:

(Start: 8 @11605 has 300 MA's), (17, 11626), (20, 11638), (23, 11650), (49, 11812), (61, 11881), (66, 11929), (80, 12001), (91, 12046), (96, 12070), (107, 12121), (122, 12175), (128, 12232), (133, 12271),

Gene: Qyrzula_15 Start: 14622, Stop: 15440, Start Num: 5

Candidate Starts for Qyrzula_15:

(Start: 5 @14622 has 33 MA's), (38, 14766), (49, 14847), (58, 14901), (59, 14907), (67, 14967), (74, 15006), (82, 15045), (92, 15084), (116, 15180), (123, 15228), (128, 15270), (132, 15306), (143, 15372),

Gene: RagingRooster_15 Start: 13141, Stop: 13950, Start Num: 7

Candidate Starts for RagingRooster_15:

(Start: 7 @13141 has 44 MA's), (28, 13204), (38, 13267), (53, 13363), (59, 13411), (61, 13417), (66, 13465), (80, 13537), (86, 13567), (92, 13588), (104, 13648), (110, 13669), (123, 13735), (142, 13876), (143, 13879),

Gene: RawrgerThat_13 Start: 13340, Stop: 14134, Start Num: 8

Candidate Starts for RawrgerThat_13:

(Start: 8 @13340 has 300 MA's), (17, 13361), (20, 13373), (38, 13472), (59, 13610), (66, 13664), (69, 13685), (73, 13706), (75, 13712), (80, 13736), (92, 13799), (101, 13841), (123, 13937), (128, 13979), (134, 14021), (141, 14063), (149, 14111),

Gene: RedMaple_12 Start: 11596, Stop: 12399, Start Num: 8

Candidate Starts for RedMaple_12:

(Start: 8 @11596 has 300 MA's), (17, 11617), (20, 11629), (23, 11641), (49, 11803), (61, 11872), (66, 11920), (80, 11992), (91, 12037), (96, 12061), (107, 12112), (122, 12166), (128, 12223), (133, 12262),

Gene: Reprobate_14 Start: 13592, Stop: 14398, Start Num: 9

Candidate Starts for Reprobate_14:

(Start: 9 @13592 has 10 MA's), (17, 13604), (34, 13682), (60, 13886), (61, 13889), (66, 13937), (69, 13958), (80, 14009), (94, 14072), (111, 14144), (123, 14201), (139, 14321),

Gene: Rhinoforte_16 Start: 14649, Stop: 15467, Start Num: 5

Candidate Starts for Rhinoforte_16:

(Start: 5 @14649 has 33 MA's), (38, 14793), (49, 14874), (58, 14928), (59, 14934), (67, 14994), (74, 15033), (82, 15072), (92, 15111), (116, 15207), (123, 15255), (128, 15297), (132, 15333), (143, 15399),

Gene: Rich_14 Start: 13348, Stop: 14154, Start Num: 9

Candidate Starts for Rich_14:

(Start: 9 @13348 has 10 MA's), (18, 13363), (25, 13390), (29, 13414), (34, 13438), (60, 13642), (61, 13645), (71, 13723), (77, 13753), (80, 13765), (94, 13828), (97, 13840), (123, 13957), (128, 13999), (134, 14041), (139, 14077),

Gene: Ricotta_13 Start: 11308, Stop: 12111, Start Num: 8

Candidate Starts for Ricotta_13:

(Start: 8 @11308 has 300 MA's), (17, 11329), (20, 11341), (23, 11353), (49, 11515), (61, 11584), (66, 11632), (80, 11704), (91, 11749), (96, 11773), (107, 11824), (122, 11878), (128, 11935), (133, 11974),

Gene: Riggan_13 Start: 11606, Stop: 12403, Start Num: 8

Candidate Starts for Riggan_13:

(Start: 8 @11606 has 300 MA's), (17, 11627), (20, 11639), (23, 11651), (49, 11813), (61, 11882), (66, 11930), (80, 12002), (91, 12047), (96, 12071), (107, 12122), (122, 12176), (128, 12233), (133, 12272),

Gene: Rimu_12 Start: 11302, Stop: 12105, Start Num: 8

Candidate Starts for Rimu_12:

(Start: 8 @11302 has 300 MA's), (17, 11323), (20, 11335), (23, 11347), (49, 11509), (61, 11578), (66, 11626), (80, 11698), (91, 11743), (96, 11767), (107, 11818), (122, 11872), (128, 11929), (133, 11968),

Gene: Rita1961_15 Start: 13135, Stop: 13944, Start Num: 7

Candidate Starts for Rita1961_15:

(Start: 7 @13135 has 44 MA's), (28, 13198), (38, 13261), (53, 13357), (59, 13405), (61, 13411), (66, 13459), (80, 13531), (86, 13561), (92, 13582), (104, 13642), (110, 13663), (123, 13729), (142, 13870), (143, 13873),

Gene: Robyn_12 Start: 11157, Stop: 11960, Start Num: 8

Candidate Starts for Robyn_12:

(Start: 8 @11157 has 300 MA's), (17, 11178), (20, 11190), (23, 11202), (49, 11364), (61, 11433), (66, 11481), (80, 11553), (91, 11598), (96, 11622), (107, 11673), (122, 11727), (128, 11784), (133, 11823),

Gene: Roliet_13 Start: 11602, Stop: 12405, Start Num: 8

Candidate Starts for Roliet_13:

(Start: 8 @11602 has 300 MA's), (17, 11623), (20, 11635), (23, 11647), (49, 11809), (61, 11878), (66, 11926), (80, 11998), (91, 12043), (96, 12067), (107, 12118), (122, 12172), (128, 12229), (133, 12268),

Gene: RomaT_15 Start: 13921, Stop: 14730, Start Num: 7

Candidate Starts for RomaT_15:

(Start: 7 @13921 has 44 MA's), (28, 13984), (38, 14047), (53, 14143), (59, 14191), (61, 14197), (66, 14245), (80, 14317), (86, 14347), (89, 14350), (92, 14368), (104, 14428), (110, 14449), (123, 14515), (142, 14656), (143, 14659),

Gene: Roscoe_14 Start: 11837, Stop: 12634, Start Num: 8

Candidate Starts for Roscoe_14:

(Start: 8 @11837 has 300 MA's), (17, 11858), (20, 11870), (23, 11882), (49, 12044), (61, 12113), (66, 12161), (80, 12233), (91, 12278), (96, 12302), (107, 12353), (122, 12407), (128, 12464), (133, 12503),

Gene: Rosebush_16 Start: 14649, Stop: 15467, Start Num: 5

Candidate Starts for Rosebush_16:

(Start: 5 @14649 has 33 MA's), (38, 14793), (49, 14874), (58, 14928), (59, 14934), (67, 14994), (74, 15033), (82, 15072), (92, 15111), (116, 15207), (123, 15255), (128, 15297), (132, 15333), (143, 15399),

Gene: Roy17_13 Start: 11310, Stop: 12107, Start Num: 8

Candidate Starts for Roy17_13:

(Start: 8 @11310 has 300 MA's), (17, 11331), (20, 11343), (23, 11355), (61, 11586), (66, 11634), (80, 11706), (91, 11751), (96, 11775), (107, 11826), (122, 11880), (128, 11937), (133, 11976),

Gene: SDcharge11_13 Start: 11595, Stop: 12398, Start Num: 8

Candidate Starts for SDcharge11_13:

(Start: 8 @11595 has 300 MA's), (17, 11616), (20, 11628), (23, 11640), (49, 11802), (61, 11871), (66, 11919), (80, 11991), (91, 12036), (96, 12060), (107, 12111), (122, 12165), (128, 12222), (133, 12261),

Gene: Sabella_16 Start: 14535, Stop: 15353, Start Num: 5

Candidate Starts for Sabella_16:

(Start: 5 @14535 has 33 MA's), (38, 14679), (49, 14760), (58, 14814), (59, 14820), (67, 14880), (74, 14919), (82, 14958), (92, 14997), (116, 15093), (123, 15141), (128, 15183), (132, 15219), (143, 15285),

Gene: Saguaro_15 Start: 14245, Stop: 15039, Start Num: 6

Candidate Starts for Saguaro_15:

(Start: 6 @14245 has 1 MA's), (10, 14260), (20, 14287), (32, 14341), (55, 14497), (56, 14506), (59, 14518), (66, 14572), (74, 14617), (88, 14683), (98, 14731), (107, 14773), (128, 14884), (141, 14968), (142, 14983), (149, 15016),

Gene: Samaymay_13 Start: 11602, Stop: 12399, Start Num: 8

Candidate Starts for Samaymay_13:

(Start: 8 @11602 has 300 MA's), (17, 11623), (20, 11635), (23, 11647), (49, 11809), (61, 11878), (66, 11926), (80, 11998), (91, 12043), (96, 12067), (107, 12118), (122, 12172), (128, 12229), (133, 12268),

Gene: SassyCat97_12 Start: 11309, Stop: 12106, Start Num: 8

Candidate Starts for SassyCat97_12:

(Start: 8 @11309 has 300 MA's), (17, 11330), (20, 11342), (23, 11354), (49, 11516), (61, 11585), (66, 11633), (80, 11705), (91, 11750), (96, 11774), (107, 11825), (122, 11879), (128, 11936), (133, 11975),

Gene: Schadenfreude_12 Start: 11147, Stop: 11950, Start Num: 8

Candidate Starts for Schadenfreude_12:

(Start: 8 @11147 has 300 MA's), (17, 11168), (20, 11180), (23, 11192), (49, 11354), (61, 11423), (66, 11471), (80, 11543), (91, 11588), (96, 11612), (107, 11663), (122, 11717), (128, 11774), (133, 11813),

Gene: Schueller_12 Start: 11306, Stop: 12103, Start Num: 8

Candidate Starts for Schueller_12:

(Start: 8 @11306 has 300 MA's), (17, 11327), (20, 11339), (23, 11351), (49, 11513), (61, 11582), (66, 11630), (80, 11702), (91, 11747), (96, 11771), (107, 11822), (122, 11876), (128, 11933), (133, 11972),

Gene: Scoot17C_13 Start: 11603, Stop: 12406, Start Num: 8

Candidate Starts for Scoot17C_13:

(Start: 8 @11603 has 300 MA's), (17, 11624), (20, 11636), (23, 11648), (49, 11810), (61, 11879), (66, 11927), (80, 11999), (91, 12044), (96, 12068), (107, 12119), (122, 12173), (128, 12230), (133, 12269),

Gene: Scrick_12 Start: 11310, Stop: 12113, Start Num: 8

Candidate Starts for Scrick_12:

(Start: 8 @11310 has 300 MA's), (17, 11331), (20, 11343), (23, 11355), (61, 11586), (66, 11634), (80, 11706), (91, 11751), (96, 11775), (107, 11826), (122, 11880), (128, 11937), (133, 11976),

Gene: Sejanus_11 Start: 11588, Stop: 12436, Start Num: 8

Candidate Starts for Sejanus_11:

(Start: 8 @11588 has 300 MA's), (18, 11603), (38, 11714), (40, 11726), (45, 11759), (61, 11861), (66, 11909), (75, 11957), (80, 11981), (90, 12023), (118, 12131), (123, 12176), (125, 12194), (134, 12260), (136, 12272), (139, 12296), (142, 12317), (149, 12350),

Gene: Selr12_13 Start: 11309, Stop: 12112, Start Num: 8

Candidate Starts for Selr12_13:

(Start: 8 @11309 has 300 MA's), (17, 11330), (20, 11342), (23, 11354), (49, 11516), (61, 11585), (66, 11633), (80, 11705), (91, 11750), (96, 11774), (107, 11825), (122, 11879), (128, 11936), (133, 11975),

Gene: Serendipitous_14 Start: 13398, Stop: 14204, Start Num: 9

Candidate Starts for Serendipitous_14:

(Start: 9 @13398 has 10 MA's), (34, 13488), (60, 13692), (71, 13773), (80, 13815), (89, 13851), (94, 13878), (111, 13950), (123, 14007), (128, 14049), (134, 14091), (139, 14127),

Gene: Serendipity_13 Start: 11605, Stop: 12408, Start Num: 8

Candidate Starts for Serendipity_13:

(Start: 8 @11605 has 300 MA's), (17, 11626), (20, 11638), (23, 11650), (49, 11812), (61, 11881), (66, 11929), (80, 12001), (91, 12046), (96, 12070), (107, 12121), (122, 12175), (128, 12232), (133, 12271),

Gene: Serpentine_0013 Start: 11605, Stop: 12408, Start Num: 8

Candidate Starts for Serpentine_0013:

(Start: 8 @11605 has 300 MA's), (17, 11626), (20, 11638), (23, 11650), (49, 11812), (61, 11881), (66, 11929), (80, 12001), (91, 12046), (96, 12070), (107, 12121), (122, 12175), (128, 12232), (133, 12271),

Gene: Shatter_12 Start: 11636, Stop: 12418, Start Num: 8

Candidate Starts for Shatter_12:

(Start: 8 @11636 has 300 MA's), (15, 11648), (32, 11726), (128, 12272), (129, 12287), (132, 12308), (139, 12350), (141, 12356), (146, 12395),

Gene: Sheila_13 Start: 11600, Stop: 12403, Start Num: 8

Candidate Starts for Sheila_13:

(Start: 8 @11600 has 300 MA's), (17, 11621), (20, 11633), (23, 11645), (49, 11807), (61, 11876), (66, 11924), (80, 11996), (91, 12041), (96, 12065), (107, 12116), (122, 12170), (128, 12227), (133, 12266),

Gene: ShiVal_13 Start: 11602, Stop: 12399, Start Num: 8

Candidate Starts for ShiVal_13:

(Start: 8 @11602 has 300 MA's), (17, 11623), (20, 11635), (23, 11647), (61, 11878), (66, 11926), (80, 11998), (91, 12043), (96, 12067), (107, 12118), (122, 12172), (128, 12229), (133, 12268),

Gene: Sigman_13 Start: 11599, Stop: 12396, Start Num: 8

Candidate Starts for Sigman_13:

(Start: 8 @11599 has 300 MA's), (17, 11620), (20, 11632), (23, 11644), (61, 11875), (66, 11923), (80, 11995), (91, 12040), (96, 12064), (107, 12115), (122, 12169), (128, 12226), (133, 12265),

Gene: Simielle_12 Start: 11300, Stop: 12097, Start Num: 8

Candidate Starts for Simielle_12:

(Start: 8 @11300 has 300 MA's), (17, 11321), (20, 11333), (23, 11345), (49, 11507), (61, 11576), (66, 11624), (80, 11696), (91, 11741), (96, 11765), (107, 11816), (122, 11870), (128, 11927), (133, 11966),

Gene: SirJeffery_14 Start: 13351, Stop: 14157, Start Num: 9

Candidate Starts for SirJeffery_14:

(Start: 9 @13351 has 10 MA's), (18, 13366), (25, 13393), (34, 13441), (71, 13726), (80, 13768), (84, 13786), (89, 13804), (94, 13831), (97, 13843), (111, 13903), (123, 13960), (125, 13978), (128, 14002), (134, 14044), (139, 14080),

Gene: Sisko_12 Start: 11968, Stop: 12750, Start Num: 8

Candidate Starts for Sisko_12:

(Start: 8 @11968 has 300 MA's), (20, 12007), (32, 12061), (67, 12301), (71, 12325), (102, 12463), (106, 12484), (125, 12580), (127, 12601), (129, 12619), (134, 12646), (146, 12727),

Gene: Skippy_13 Start: 11605, Stop: 12402, Start Num: 8

Candidate Starts for Skippy_13:

(Start: 8 @11605 has 300 MA's), (17, 11626), (20, 11638), (23, 11650), (49, 11812), (61, 11881), (66, 11929), (80, 12001), (91, 12046), (96, 12070), (107, 12121), (122, 12175), (128, 12232), (133, 12271),

Gene: Slatt_13 Start: 11607, Stop: 12410, Start Num: 8

Candidate Starts for Slatt_13:

(Start: 8 @11607 has 300 MA's), (17, 11628), (20, 11640), (23, 11652), (49, 11814), (61, 11883), (66, 11931), (80, 12003), (91, 12048), (96, 12072), (107, 12123), (122, 12177), (128, 12234), (133, 12273),

Gene: SlippinJimmy_15 Start: 13905, Stop: 14714, Start Num: 7

Candidate Starts for SlippinJimmy_15:

(Start: 7 @13905 has 44 MA's), (28, 13968), (38, 14031), (53, 14127), (59, 14175), (61, 14181), (66, 14229), (80, 14301), (86, 14331), (89, 14334), (92, 14352), (104, 14412), (110, 14433), (123, 14499), (142, 14640), (143, 14643),

Gene: Soile_13 Start: 11308, Stop: 12111, Start Num: 8

Candidate Starts for Soile_13:

(Start: 8 @11308 has 300 MA's), (17, 11329), (20, 11341), (23, 11353), (49, 11515), (61, 11584), (66, 11632), (80, 11704), (91, 11749), (96, 11773), (107, 11824), (122, 11878), (128, 11935), (133, 11974),

Gene: Solosis_12 Start: 11309, Stop: 12112, Start Num: 8

Candidate Starts for Solosis_12:

(Start: 8 @11309 has 300 MA's), (17, 11330), (20, 11342), (23, 11354), (49, 11516), (61, 11585), (66, 11633), (80, 11705), (91, 11750), (96, 11774), (107, 11825), (122, 11879), (128, 11936), (133, 11975),

Gene: Soos_41 Start: 24289, Stop: 25056, Start Num: 8

Candidate Starts for Soos_41:

(Start: 8 @24289 has 300 MA's), (27, 24355), (35, 24391), (63, 24562), (64, 24565), (90, 24715), (102, 24769), (129, 24925), (130, 24931), (142, 25009), (147, 25036),

Gene: Sophia_12 Start: 11309, Stop: 12106, Start Num: 8

Candidate Starts for Sophia_12:

(Start: 8 @11309 has 300 MA's), (17, 11330), (20, 11342), (23, 11354), (49, 11516), (61, 11585), (66, 11633), (80, 11705), (91, 11750), (96, 11774), (107, 11825), (122, 11879), (128, 11936), (133, 11975),

Gene: Soto_13 Start: 11599, Stop: 12402, Start Num: 8

Candidate Starts for Soto_13:

(Start: 8 @11599 has 300 MA's), (17, 11620), (20, 11632), (23, 11644), (49, 11806), (61, 11875), (66, 11923), (80, 11995), (91, 12040), (96, 12064), (107, 12115), (122, 12169), (128, 12226), (133, 12265),

Gene: Sour_15 Start: 13282, Stop: 14088, Start Num: 2

Candidate Starts for Sour_15:

(Start: 2 @13282 has 1 MA's), (14, 13324), (20, 13348), (30, 13399), (36, 13423), (38, 13447), (54, 13555), (67, 13639), (68, 13645), (90, 13747), (92, 13756), (106, 13822), (123, 13900), (127, 13939), (133, 13981),

Gene: Spartan300_13 Start: 11599, Stop: 12396, Start Num: 8

Candidate Starts for Spartan300_13:

(Start: 8 @11599 has 300 MA's), (17, 11620), (20, 11632), (23, 11644), (49, 11806), (61, 11875), (66, 11923), (80, 11995), (91, 12040), (96, 12064), (107, 12115), (122, 12169), (128, 12226), (133, 12265),

Gene: Squid_13 Start: 11309, Stop: 12106, Start Num: 8

Candidate Starts for Squid_13:

(Start: 8 @11309 has 300 MA's), (17, 11330), (20, 11342), (23, 11354), (49, 11516), (61, 11585), (66, 11633), (80, 11705), (91, 11750), (96, 11774), (107, 11825), (122, 11879), (128, 11936), (133, 11975),

Gene: Squiggle_13 Start: 11309, Stop: 12106, Start Num: 8

Candidate Starts for Squiggle_13:

(Start: 8 @11309 has 300 MA's), (17, 11330), (20, 11342), (23, 11354), (49, 11516), (61, 11585), (66, 11633), (80, 11705), (91, 11750), (96, 11774), (107, 11825), (122, 11879), (128, 11936), (133, 11975),

Gene: StAugustine_19 Start: 15471, Stop: 16352, Start Num: 8

Candidate Starts for StAugustine_19:

(Start: 8 @15471 has 300 MA's), (15, 15483), (60, 15759), (62, 15777), (90, 15924), (113, 16023), (115, 16029), (122, 16068), (123, 16083), (125, 16101), (126, 16119), (149, 16284),

Gene: Sting_44 Start: 24728, Stop: 25495, Start Num: 8

Candidate Starts for Sting_44:

(Start: 8 @24728 has 300 MA's), (27, 24794), (35, 24830), (63, 25001), (64, 25004), (90, 25154), (102, 25208), (129, 25364), (130, 25370), (142, 25448), (147, 25475),

Gene: Stinger_11 Start: 11803, Stop: 12600, Start Num: 8

Candidate Starts for Stinger_11:

(Start: 8 @11803 has 300 MA's), (19, 11830), (31, 11887), (38, 11932), (59, 12070), (66, 12124), (69, 12145), (73, 12166), (75, 12172), (80, 12196), (101, 12301), (122, 12388), (125, 12421), (128, 12445), (134, 12487), (141, 12529), (149, 12577),

Gene: StinkyVeggy_15 Start: 13490, Stop: 14296, Start Num: 9

Candidate Starts for StinkyVeggy_15:

(Start: 9 @13490 has 10 MA's), (60, 13784), (71, 13865), (80, 13907), (94, 13970), (97, 13982), (111, 14042), (123, 14099), (128, 14141), (139, 14219), (149, 14273),

Gene: Struggle_12 Start: 11155, Stop: 11952, Start Num: 8

Candidate Starts for Struggle_12:

(Start: 8 @11155 has 300 MA's), (17, 11176), (20, 11188), (23, 11200), (61, 11431), (66, 11479), (80, 11551), (91, 11596), (96, 11620), (107, 11671), (122, 11725), (128, 11782), (133, 11821),

Gene: Suffolk_13 Start: 11601, Stop: 12404, Start Num: 8

Candidate Starts for Suffolk_13:

(Start: 8 @11601 has 300 MA's), (17, 11622), (20, 11634), (23, 11646), (49, 11808), (61, 11877), (66, 11925), (80, 11997), (91, 12042), (96, 12066), (107, 12117), (122, 12171), (128, 12228), (133, 12267),

Gene: Suigeneris_14 Start: 13351, Stop: 14157, Start Num: 9

Candidate Starts for Suigeneris_14:

(Start: 9 @13351 has 10 MA's), (18, 13366), (25, 13393), (34, 13441), (71, 13726), (80, 13768), (84, 13786), (89, 13804), (94, 13831), (97, 13843), (111, 13903), (123, 13960), (125, 13978), (128, 14002), (134, 14044), (139, 14080),

Gene: Surely_13 Start: 11605, Stop: 12408, Start Num: 8

Candidate Starts for Surely_13:

(Start: 8 @11605 has 300 MA's), (17, 11626), (20, 11638), (23, 11650), (49, 11812), (61, 11881), (66, 11929), (80, 12001), (91, 12046), (96, 12070), (107, 12121), (122, 12175), (128, 12232), (133, 12271),

Gene: Swiphy_13 Start: 11602, Stop: 12399, Start Num: 8

Candidate Starts for Swiphy_13:

(Start: 8 @11602 has 300 MA's), (17, 11623), (20, 11635), (23, 11647), (49, 11809), (61, 11878), (66, 11926), (80, 11998), (91, 12043), (96, 12067), (107, 12118), (122, 12172), (128, 12229), (133, 12268),

Gene: Swish_13 Start: 11603, Stop: 12400, Start Num: 8

Candidate Starts for Swish_13:

(Start: 8 @11603 has 300 MA's), (17, 11624), (20, 11636), (23, 11648), (61, 11879), (66, 11927), (80, 11999), (91, 12044), (96, 12068), (107, 12119), (122, 12173), (128, 12230), (133, 12269),

Gene: SynergyX_15 Start: 13141, Stop: 13950, Start Num: 7

Candidate Starts for SynergyX_15:

(Start: 7 @13141 has 44 MA's), (28, 13204), (38, 13267), (53, 13363), (59, 13411), (61, 13417), (66, 13465), (80, 13537), (86, 13567), (92, 13588), (104, 13648), (110, 13669), (123, 13735), (142, 13876), (143, 13879),

Gene: TA17A_16 Start: 14532, Stop: 15350, Start Num: 5

Candidate Starts for TA17A_16:

(Start: 5 @14532 has 33 MA's), (38, 14676), (49, 14757), (58, 14811), (59, 14817), (67, 14877), (74, 14916), (82, 14955), (92, 14994), (116, 15090), (123, 15138), (128, 15180), (132, 15216), (143, 15282),

Gene: TPA2_22 Start: 14324, Stop: 15103, Start Num: 8

Candidate Starts for TPA2_22:

(1, 14264), (Start: 8 @14324 has 300 MA's), (20, 14357), (33, 14414), (80, 14711), (92, 14762), (109, 14837), (128, 14948), (136, 15002), (137, 15020), (141, 15032),

Gene: TallGrassMM_13 Start: 11309, Stop: 12112, Start Num: 8

Candidate Starts for TallGrassMM_13:

(Start: 8 @11309 has 300 MA's), (17, 11330), (20, 11342), (23, 11354), (49, 11516), (61, 11585), (66, 11633), (80, 11705), (91, 11750), (96, 11774), (107, 11825), (122, 11879), (128, 11936), (133, 11975),

Gene: Taptic_10 Start: 12673, Stop: 13449, Start Num: 8

Candidate Starts for Taptic_10:

(Start: 8 @12673 has 300 MA's), (20, 12694), (21, 12697), (26, 12715), (32, 12748), (39, 12802), (40, 12808), (45, 12841), (66, 12988), (70, 13012), (71, 13018), (90, 13102), (109, 13186), (120, 13228), (132, 13333), (134, 13339), (143, 13399),

Gene: Telesworld_12 Start: 11309, Stop: 12112, Start Num: 8

Candidate Starts for Telesworld_12:

(Start: 8 @11309 has 300 MA's), (17, 11330), (20, 11342), (23, 11354), (49, 11516), (61, 11585), (66, 11633), (80, 11705), (91, 11750), (96, 11774), (107, 11825), (122, 11879), (128, 11936), (133, 11975),

Gene: Thonko_14 Start: 11261, Stop: 12043, Start Num: 9

Candidate Starts for Thonko_14:

(Start: 9 @11261 has 10 MA's), (17, 11273), (20, 11285), (66, 11579), (82, 11663), (96, 11732),

Gene: Thora_13 Start: 11599, Stop: 12402, Start Num: 8

Candidate Starts for Thora_13:

(Start: 8 @11599 has 300 MA's), (17, 11620), (20, 11632), (23, 11644), (49, 11806), (61, 11875), (66, 11923), (80, 11995), (91, 12040), (96, 12064), (107, 12115), (122, 12169), (128, 12226), (133, 12265),

Gene: ThreeOh3D2_13 Start: 11600, Stop: 12403, Start Num: 8

Candidate Starts for ThreeOh3D2_13:

(Start: 8 @11600 has 300 MA's), (17, 11621), (20, 11633), (23, 11645), (49, 11807), (61, 11876), (66, 11924), (80, 11996), (91, 12041), (96, 12065), (107, 12116), (122, 12170), (128, 12227), (133, 12266),

Gene: Timmi_12 Start: 11309, Stop: 12112, Start Num: 8

Candidate Starts for Timmi_12:

(Start: 8 @11309 has 300 MA's), (17, 11330), (20, 11342), (23, 11354), (49, 11516), (61, 11585), (66, 11633), (80, 11705), (91, 11750), (96, 11774), (107, 11825), (122, 11879), (128, 11936), (133, 11975),

Gene: Tinciduntolum_17 Start: 14651, Stop: 15469, Start Num: 5

Candidate Starts for Tinciduntolum_17:

(Start: 5 @14651 has 33 MA's), (38, 14795), (49, 14876), (58, 14930), (59, 14936), (67, 14996), (74, 15035), (82, 15074), (92, 15113), (116, 15209), (123, 15257), (128, 15299), (132, 15335), (143, 15401),

Gene: TomBombadil_13 Start: 11605, Stop: 12402, Start Num: 8

Candidate Starts for TomBombadil_13:

(Start: 8 @11605 has 300 MA's), (17, 11626), (20, 11638), (23, 11650), (49, 11812), (61, 11881), (66, 11929), (80, 12001), (91, 12046), (96, 12070), (107, 12121), (122, 12175), (128, 12232), (133, 12271),

Gene: Tomlarah_13 Start: 11602, Stop: 12399, Start Num: 8

Candidate Starts for Tomlarah_13:

(Start: 8 @11602 has 300 MA's), (17, 11623), (20, 11635), (23, 11647), (49, 11809), (61, 11878), (66, 11926), (80, 11998), (91, 12043), (96, 12067), (107, 12118), (122, 12172), (128, 12229), (133, 12268),

Gene: Toni_12 Start: 11313, Stop: 12110, Start Num: 8

Candidate Starts for Toni_12:

(Start: 8 @11313 has 300 MA's), (17, 11334), (20, 11346), (23, 11358), (49, 11520), (61, 11589), (66, 11637), (80, 11709), (91, 11754), (96, 11778), (107, 11829), (122, 11883), (128, 11940), (133, 11979),

Gene: Tonitrus_32 Start: 21138, Stop: 21920, Start Num: 8

Candidate Starts for Tonitrus_32:

(4, 21117), (Start: 8 @21138 has 300 MA's), (18, 21162), (24, 21186), (38, 21267), (61, 21399), (75, 21495), (90, 21579), (94, 21597), (99, 21624), (102, 21633), (117, 21687), (120, 21708), (131, 21795), (136, 21828), (144, 21879),

Gene: Tooj_13 Start: 11603, Stop: 12406, Start Num: 8

Candidate Starts for Tooj_13:

(Start: 8 @11603 has 300 MA's), (17, 11624), (20, 11636), (23, 11648), (49, 11810), (61, 11879), (66, 11927), (80, 11999), (91, 12044), (96, 12068), (107, 12119), (122, 12173), (128, 12230), (133, 12269),

Gene: Tres_16 Start: 14532, Stop: 15350, Start Num: 5

Candidate Starts for Tres_16:

(Start: 5 @14532 has 33 MA's), (38, 14676), (49, 14757), (58, 14811), (59, 14817), (67, 14877), (74, 14916), (82, 14955), (92, 14994), (116, 15090), (123, 15138), (128, 15180), (132, 15216), (143, 15282),

Gene: True_12 Start: 11310, Stop: 12107, Start Num: 8

Candidate Starts for True_12:

(Start: 8 @11310 has 300 MA's), (17, 11331), (20, 11343), (23, 11355), (61, 11586), (66, 11634), (80, 11706), (91, 11751), (96, 11775), (107, 11826), (122, 11880), (128, 11937), (133, 11976),

Gene: Trypo_13 Start: 11599, Stop: 12396, Start Num: 8

Candidate Starts for Trypo_13:

(Start: 8 @11599 has 300 MA's), (17, 11620), (20, 11632), (23, 11644), (49, 11806), (61, 11875), (66, 11923), (80, 11995), (91, 12040), (96, 12064), (107, 12115), (122, 12169), (128, 12226), (133, 12265),

Gene: Tydolla_15 Start: 13878, Stop: 14687, Start Num: 7

Candidate Starts for Tydolla_15:

(Start: 7 @13878 has 44 MA's), (28, 13941), (38, 14004), (53, 14100), (59, 14148), (61, 14154), (66, 14202), (80, 14274), (86, 14304), (92, 14325), (104, 14385), (110, 14406), (123, 14472), (142, 14613), (143, 14616),

Gene: TyrionL_12 Start: 11161, Stop: 11958, Start Num: 8

Candidate Starts for TyrionL_12:

(Start: 8 @11161 has 300 MA's), (17, 11182), (20, 11194), (23, 11206), (61, 11437), (66, 11485), (80, 11557), (91, 11602), (96, 11626), (107, 11677), (122, 11731), (128, 11788), (133, 11827),

Gene: UAch1_13 Start: 11602, Stop: 12405, Start Num: 8

Candidate Starts for UAch1_13:

(Start: 8 @11602 has 300 MA's), (17, 11623), (20, 11635), (23, 11647), (49, 11809), (61, 11878), (66, 11926), (80, 11998), (91, 12043), (96, 12067), (107, 12118), (122, 12172), (128, 12229), (133, 12268),

Gene: UncleHowie_13 Start: 11309, Stop: 12112, Start Num: 8

Candidate Starts for UncleHowie_13:

(Start: 8 @11309 has 300 MA's), (17, 11330), (20, 11342), (23, 11354), (49, 11516), (61, 11585), (66, 11633), (80, 11705), (91, 11750), (96, 11774), (107, 11825), (122, 11879), (128, 11936), (133, 11975),

Gene: Usavi_13 Start: 11599, Stop: 12402, Start Num: 8

Candidate Starts for Usavi_13:

(Start: 8 @11599 has 300 MA's), (17, 11620), (20, 11632), (23, 11644), (49, 11806), (61, 11875), (66, 11923), (80, 11995), (91, 12040), (96, 12064), (107, 12115), (122, 12169), (128, 12226), (133, 12265),

Gene: Vaishali24_12 Start: 11274, Stop: 12077, Start Num: 8

Candidate Starts for Vaishali24_12:

(Start: 8 @11274 has 300 MA's), (17, 11295), (20, 11307), (23, 11319), (49, 11481), (61, 11550), (66, 11598), (80, 11670), (91, 11715), (96, 11739), (107, 11790), (122, 11844), (128, 11901), (133, 11940),

Gene: Valjean_13 Start: 11602, Stop: 12399, Start Num: 8

Candidate Starts for Valjean_13:

(Start: 8 @11602 has 300 MA's), (17, 11623), (20, 11635), (23, 11647), (49, 11809), (61, 11878), (66, 11926), (80, 11998), (91, 12043), (96, 12067), (107, 12118), (122, 12172), (128, 12229), (133, 12268),

Gene: Vaticameos_13 Start: 11306, Stop: 12103, Start Num: 8

Candidate Starts for Vaticameos_13:

(Start: 8 @11306 has 300 MA's), (17, 11327), (20, 11339), (23, 11351), (49, 11513), (61, 11582), (66, 11630), (80, 11702), (91, 11747), (96, 11771), (107, 11822), (122, 11876), (128, 11933), (133, 11972),

Gene: Veritas_12 Start: 11149, Stop: 11946, Start Num: 8

Candidate Starts for Veritas_12:

(Start: 8 @11149 has 300 MA's), (17, 11170), (20, 11182), (23, 11194), (61, 11425), (66, 11473), (80, 11545), (91, 11590), (96, 11614), (107, 11665), (122, 11719), (128, 11776), (133, 11815),

Gene: Vincenzo_14 Start: 14119, Stop: 14907, Start Num: 8

Candidate Starts for Vincenzo_14:

(Start: 8 @14119 has 300 MA's), (19, 14140), (20, 14143), (23, 14155), (60, 14386), (61, 14389), (69, 14458), (73, 14479), (80, 14509), (97, 14593), (107, 14641), (128, 14752), (134, 14794), (141, 14836), (149, 14884),

Gene: VioletZ_13 Start: 13349, Stop: 14143, Start Num: 8

Candidate Starts for VioletZ_13:

(Start: 8 @13349 has 300 MA's), (17, 13370), (38, 13481), (59, 13619), (66, 13673), (69, 13694), (73, 13715), (75, 13721), (92, 13808), (101, 13850), (123, 13946), (124, 13949), (128, 13988), (134, 14030), (141, 14072), (149, 14120),

Gene: Virapocalypse_13 Start: 11600, Stop: 12397, Start Num: 8

Candidate Starts for Virapocalypse_13:

(Start: 8 @11600 has 300 MA's), (17, 11621), (20, 11633), (23, 11645), (49, 11807), (61, 11876), (66, 11924), (80, 11996), (91, 12041), (96, 12065), (107, 12116), (122, 12170), (128, 12227), (133, 12266),

Gene: Virgeve_12 Start: 11309, Stop: 12112, Start Num: 8

Candidate Starts for Virgeve_12:

(Start: 8 @11309 has 300 MA's), (17, 11330), (20, 11342), (23, 11354), (49, 11516), (61, 11585), (66, 11633), (80, 11705), (91, 11750), (96, 11774), (107, 11825), (122, 11879), (128, 11936), (133, 11975),

Gene: Vista_13 Start: 11605, Stop: 12402, Start Num: 8

Candidate Starts for Vista_13:

(Start: 8 @11605 has 300 MA's), (17, 11626), (20, 11638), (23, 11650), (49, 11812), (61, 11881), (66, 11929), (80, 12001), (91, 12046), (96, 12070), (107, 12121), (122, 12175), (128, 12232), (133, 12271),

Gene: Vivaldi_13 Start: 11600, Stop: 12403, Start Num: 8

Candidate Starts for Vivaldi_13:

(Start: 8 @11600 has 300 MA's), (17, 11621), (20, 11633), (23, 11645), (49, 11807), (61, 11876), (66, 11924), (80, 11996), (91, 12041), (96, 12065), (107, 12116), (122, 12170), (128, 12227), (133, 12266),

Gene: Vortex_13 Start: 11310, Stop: 12113, Start Num: 8

Candidate Starts for Vortex_13:

(Start: 8 @11310 has 300 MA's), (17, 11331), (20, 11343), (23, 11355), (49, 11517), (61, 11586), (66, 11634), (80, 11706), (91, 11751), (96, 11775), (107, 11826), (122, 11880), (128, 11937), (133, 11976),

Gene: Waleliano_13 Start: 13346, Stop: 14140, Start Num: 8

Candidate Starts for Waleliano_13:

(Start: 8 @13346 has 300 MA's), (17, 13367), (20, 13379), (38, 13478), (59, 13616), (66, 13670), (69, 13691), (73, 13712), (75, 13718), (80, 13742), (92, 13805), (101, 13847), (123, 13943), (128, 13985), (134, 14027), (141, 14069), (149, 14117),

Gene: Wallhey_12 Start: 11161, Stop: 11958, Start Num: 8

Candidate Starts for Wallhey_12:

(Start: 8 @11161 has 300 MA's), (17, 11182), (20, 11194), (23, 11206), (61, 11437), (66, 11485), (80, 11557), (91, 11602), (96, 11626), (107, 11677), (122, 11731), (128, 11788), (133, 11827),

Gene: Waterdiva_13 Start: 11603, Stop: 12400, Start Num: 8

Candidate Starts for Waterdiva_13:

(Start: 8 @11603 has 300 MA's), (17, 11624), (20, 11636), (23, 11648), (61, 11879), (66, 11927), (80, 11999), (91, 12044), (96, 12068), (107, 12119), (122, 12173), (128, 12230), (133, 12269),

Gene: Weher20_13 Start: 11599, Stop: 12396, Start Num: 8

Candidate Starts for Weher20_13:

(Start: 8 @11599 has 300 MA's), (17, 11620), (20, 11632), (23, 11644), (49, 11806), (61, 11875), (66, 11923), (80, 11995), (91, 12040), (96, 12064), (107, 12115), (122, 12169), (128, 12226), (133, 12265),

Gene: West99_16 Start: 14652, Stop: 15470, Start Num: 5

Candidate Starts for West99_16:

(Start: 5 @14652 has 33 MA's), (38, 14796), (49, 14877), (58, 14931), (59, 14937), (67, 14997), (74, 15036), (82, 15075), (92, 15114), (116, 15210), (123, 15258), (128, 15300), (132, 15336), (143, 15402),

Gene: Windsor_12 Start: 11263, Stop: 12066, Start Num: 8

Candidate Starts for Windsor_12:

(Start: 8 @11263 has 300 MA's), (17, 11284), (20, 11296), (23, 11308), (49, 11470), (61, 11539), (66, 11587), (80, 11659), (91, 11704), (96, 11728), (107, 11779), (122, 11833), (128, 11890), (133, 11929),

Gene: Wooper_14 Start: 13117, Stop: 13890, Start Num: 8

Candidate Starts for Wooper_14:

(Start: 8 @13117 has 300 MA's), (38, 13249), (75, 13480), (90, 13546), (92, 13555), (123, 13699), (141, 13825), (142, 13840),

Gene: Xavier_12 Start: 11309, Stop: 12112, Start Num: 8

Candidate Starts for Xavier_12:

(Start: 8 @11309 has 300 MA's), (17, 11330), (20, 11342), (23, 11354), (49, 11516), (61, 11585), (66, 11633), (80, 11705), (91, 11750), (96, 11774), (107, 11825), (122, 11879), (128, 11936), (133, 11975),

Gene: Yago84_12 Start: 11977, Stop: 12759, Start Num: 8

Candidate Starts for Yago84_12:

(Start: 8 @11977 has 300 MA's), (20, 12016), (32, 12070), (67, 12310), (71, 12334), (102, 12472), (106, 12493), (125, 12589), (127, 12610), (129, 12628), (134, 12655), (146, 12736),

Gene: Yahalom_15 Start: 13152, Stop: 13961, Start Num: 7

Candidate Starts for Yahalom_15:

(Start: 7 @13152 has 44 MA's), (28, 13215), (38, 13278), (53, 13374), (59, 13422), (61, 13428), (66, 13476), (80, 13548), (86, 13578), (92, 13599), (104, 13659), (110, 13680), (123, 13746), (142, 13887), (143, 13890),

Gene: Yeti_28 Start: 15862, Stop: 16509, Start Num: 51

Candidate Starts for Yeti_28:

(21, 15679), (41, 15790), (Start: 51 @15862 has 1 MA's), (61, 15922), (82, 16072), (87, 16099), (91, 16123), (94, 16138), (102, 16177), (103, 16186), (105, 16198), (138, 16420), (148, 16474),

Gene: Yinz_15 Start: 13179, Stop: 13988, Start Num: 7

Candidate Starts for Yinz_15:

(Start: 7 @13179 has 44 MA's), (28, 13242), (38, 13305), (53, 13401), (59, 13449), (61, 13455), (66, 13503), (80, 13575), (86, 13605), (89, 13608), (92, 13626), (104, 13686), (110, 13707), (123, 13773), (142, 13914), (143, 13917),

Gene: Yoshand_13 Start: 11600, Stop: 12403, Start Num: 8

Candidate Starts for Yoshand_13:

(Start: 8 @11600 has 300 MA's), (17, 11621), (20, 11633), (23, 11645), (49, 11807), (61, 11876), (66, 11924), (80, 11996), (91, 12041), (96, 12065), (107, 12116), (122, 12170), (128, 12227), (133, 12266),

Gene: YouGoGlencoco_13 Start: 11599, Stop: 12396, Start Num: 8

Candidate Starts for YouGoGlencoco_13:

(Start: 8 @11599 has 300 MA's), (17, 11620), (20, 11632), (23, 11644), (49, 11806), (61, 11875), (66, 11923), (80, 11995), (91, 12040), (96, 12064), (107, 12115), (122, 12169), (128, 12226), (133, 12265),

Gene: Zaider_14 Start: 11832, Stop: 12629, Start Num: 8

Candidate Starts for Zaider_14:

(Start: 8 @11832 has 300 MA's), (17, 11853), (20, 11865), (23, 11877), (49, 12039), (61, 12108), (66, 12156), (80, 12228), (91, 12273), (96, 12297), (107, 12348), (122, 12402), (128, 12459), (133, 12498),

Gene: Zelda_13 Start: 11602, Stop: 12399, Start Num: 8

Candidate Starts for Zelda_13:

(Start: 8 @11602 has 300 MA's), (17, 11623), (20, 11635), (23, 11647), (49, 11809), (61, 11878), (66, 11926), (80, 11998), (91, 12043), (96, 12067), (107, 12118), (122, 12172), (128, 12229), (133, 12268),

Gene: Zemanar_14 Start: 13346, Stop: 14140, Start Num: 8

Candidate Starts for Zemanar_14:

(Start: 8 @13346 has 300 MA's), (17, 13367), (20, 13379), (38, 13478), (59, 13616), (66, 13670), (69, 13691), (73, 13712), (75, 13718), (80, 13742), (92, 13805), (101, 13847), (123, 13943), (128, 13985), (134, 14027), (141, 14069), (149, 14117),

Gene: Zenteno07_18 Start: 12750, Stop: 13520, Start Num: 13

Candidate Starts for Zenteno07_18:

(Start: 13 @12750 has 2 MA's), (17, 12762), (38, 12870), (39, 12876), (49, 12948), (60, 13014), (92, 13191), (128, 13371), (134, 13413), (141, 13455), (149, 13503),

Gene: Zonia_13 Start: 11616, Stop: 12413, Start Num: 8

Candidate Starts for Zonia_13:

(Start: 8 @11616 has 300 MA's), (17, 11637), (20, 11649), (23, 11661), (61, 11892), (66, 11940), (80, 12012), (91, 12057), (96, 12081), (107, 12132), (122, 12186), (128, 12243), (133, 12282),