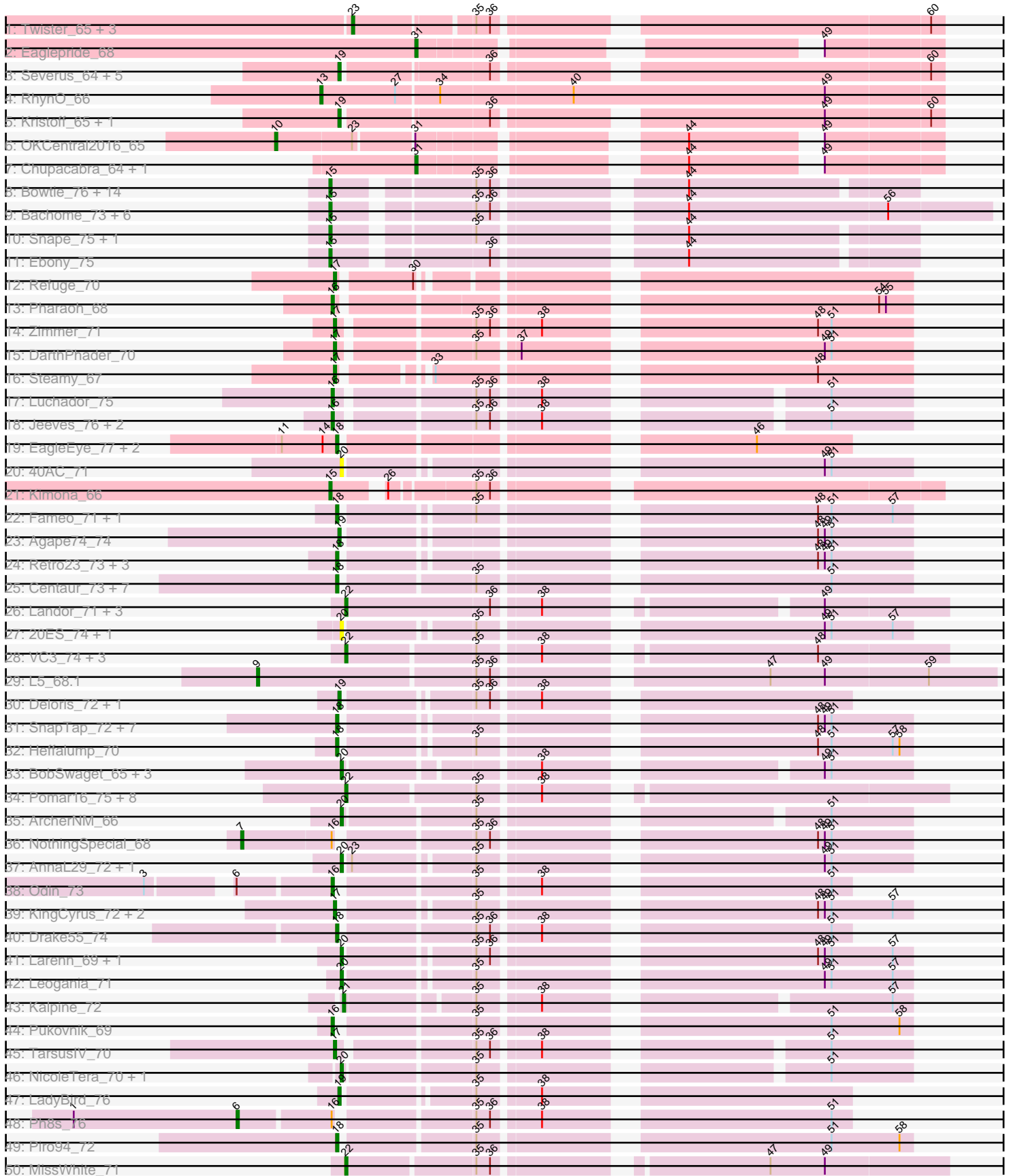
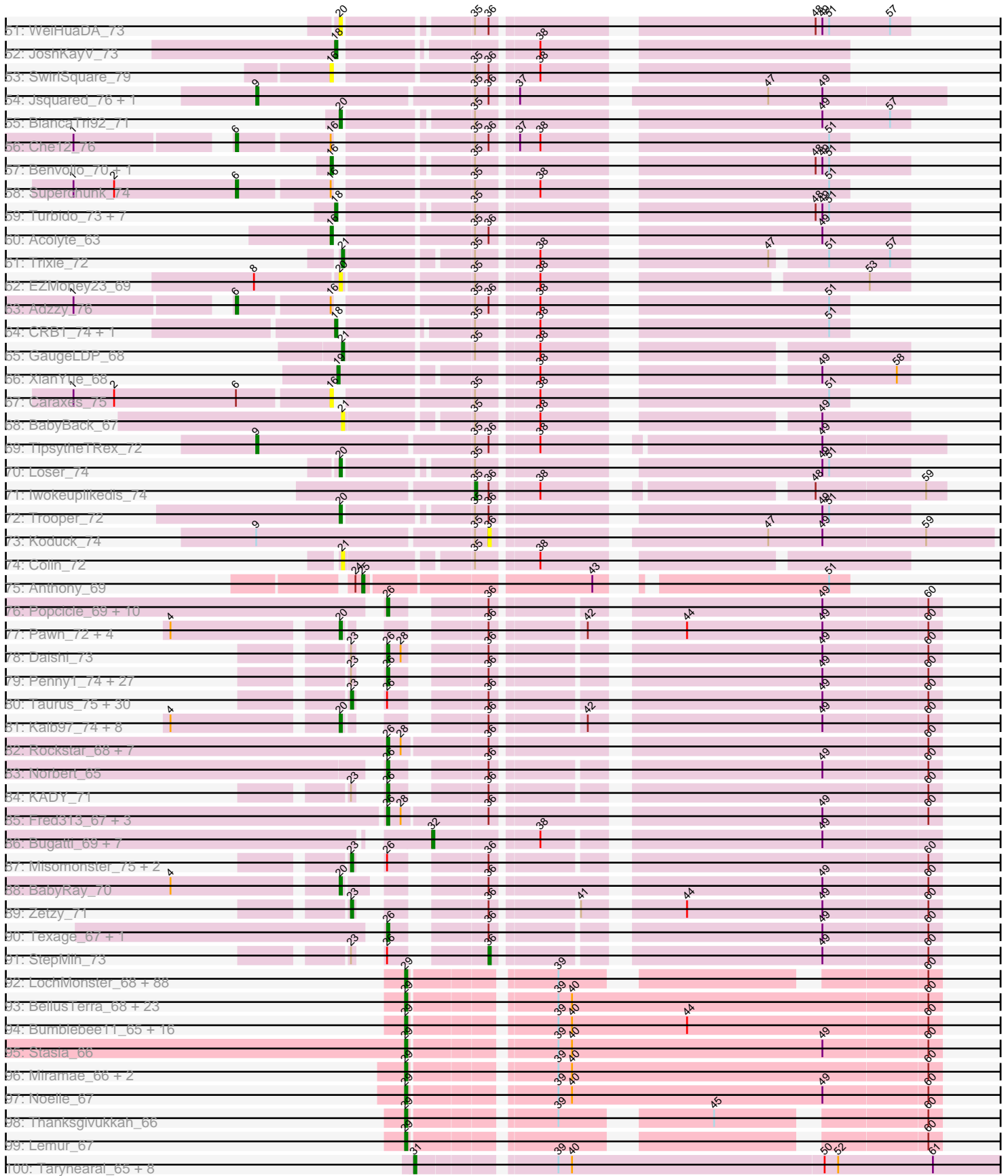


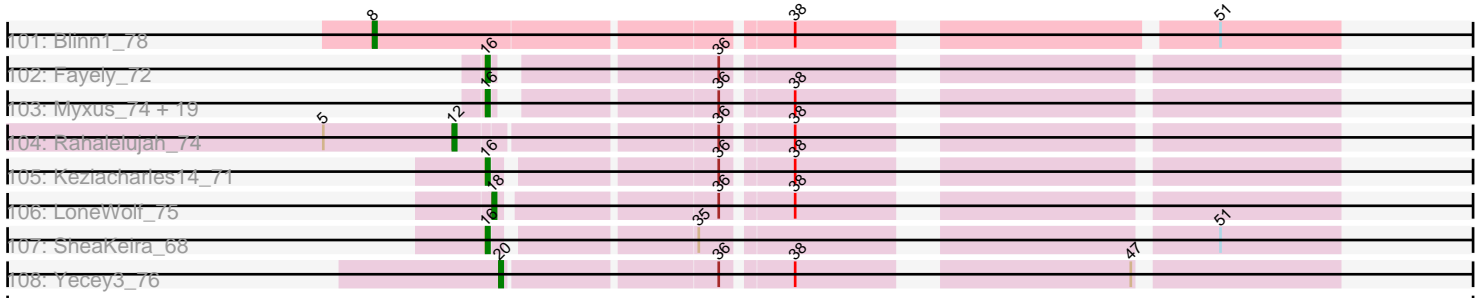
Pham 157482



Pham 157482



Pham 157482



Note: Tracks are now grouped by subcluster and scaled. Switching in subcluster is indicated by changes in track color. Track scale is now set by default to display the region 30 bp upstream of start 1 to 30 bp downstream of the last possible start. If this default region is judged to be packed too tightly with annotated starts, the track will be further scaled to only show that region of the ORF with annotated starts. This action will be indicated by adding "Zoomed" to the title. For starts, yellow indicates the location of called starts comprised solely of Glimmer/GeneMark auto-annotations, green indicates the location of called starts with at least 1 manual gene annotation.

Pham 157482 Report

This analysis was run 04/13/24 on database version 558.

Pham number 157482 has 450 members, 29 are drafts.

Phages represented in each track:

- Track 1 : Twister_65, Topanga_63, Edison31_61, WalterMcMickey_65
- Track 2 : Eaglepride_68
- Track 3 : Severus_64, Poompha_63, Trike_63, KittenMittens_63, PeaceMeal1_64, Drake94_64
- Track 4 : RhynO_66
- Track 5 : Kristoff_65, Rebeuca_67
- Track 6 : OKCentral2016_65
- Track 7 : Chupacabra_64, Goose_67
- Track 8 : Bowtie_76, Et2Brutus_74, Flaverint_76, Joselito_74, Fibonacci_74, Mabel_75, Timothy_75, Lucivia_76, Munch_75, Aneem_76, MaCh_75, Insomnia_72, Jabith_74, Orange_74, TinyTimmy_71
- Track 9 : Bachome_73, Sham4_71, Salz_70, Hutc2_70, Bud_70, Petersenfast_69, Gilberta_72
- Track 10 : Snape_75, Mulciber_73
- Track 11 : Ebony_75
- Track 12 : Refuge_70
- Track 13 : Pharaoh_68
- Track 14 : Zimmer_71
- Track 15 : DARTHPhader_70
- Track 16 : Steamy_67
- Track 17 : Luchador_75
- Track 18 : Jeeves_76, SororFago_74, Gail_74
- Track 19 : EagleEye_77, PainterBoy_75, Lucyedi_76
- Track 20 : 40AC_71
- Track 21 : Kimona_66
- Track 22 : Fameo_71, QueenB2_70
- Track 23 : Agape74_74
- Track 24 : Retro23_73, Dalmatian_73, DudeLittle_71, Anselm_74
- Track 25 : Centaur_73, Baehexic_71, WideWale_73, NaSiaTalie_73, Flare16_73, Updawg_73, Equemioh13_72, MiculUcigas_73
- Track 26 : Landor_71, IronMan_70, Phaded_68, Jaan_71
- Track 27 : 20ES_74, First_0073
- Track 28 : VC3_74, AN9_75, ANI8_75, C3_68
- Track 29 : L5_68.1
- Track 30 : Deloris_72, BengiVuitton_72
- Track 31 : SnapTap_72, Crucio_73, QueenBeesly_73, Power_72, FiringLine_73, SemperFi_73, SweetiePie_72, Georgie2_74

- Track 32 : Heffalump_70
- Track 33 : BobSwaget_65, Rachaly_68, Miko_66, Loko_66
- Track 34 : Pomar16_75, Naji_75, D32_74, Tomathan_75, D29_68.1, StarStuff_75, Duplo_75, Kerberos_75, DBQu4n_75
- Track 35 : ArcherNM_66
- Track 36 : NothingSpecial_68
- Track 37 : AnnaL29_72, RedRock_71
- Track 38 : Odin_73
- Track 39 : KingCyrus_72, ChipMunk_73, EvilGenius_72
- Track 40 : Drake55_74
- Track 41 : Larenn_69, Malec_70
- Track 42 : Leogania_71
- Track 43 : Kalpine_72
- Track 44 : Pukovnik_69
- Track 45 : TarsusIV_70
- Track 46 : NicoleTera_70, Changeling_71
- Track 47 : LadyBird_76
- Track 48 : Ph8s_76
- Track 49 : Piro94_72
- Track 50 : MissWhite_71
- Track 51 : WeiHuaDA_73
- Track 52 : JoshKayV_73
- Track 53 : SwirlSquare_79
- Track 54 : Jsquared_76, Serenity_76
- Track 55 : BiancaTri92_71
- Track 56 : Che12_76
- Track 57 : Benvolio_70, Echild_73
- Track 58 : Superchunk_74
- Track 59 : Turbido_73, Buggy_74, Dignity_74, Jerm_74, Leviathan_74, Smeagan_75, LilTurb_73, Whabigail7_73
- Track 60 : Acolyte_63
- Track 61 : Trixie_72
- Track 62 : EZMoney23_69
- Track 63 : Adzzy_76
- Track 64 : CRB1_74, HarryHoudini_73
- Track 65 : GaugeLDP_68
- Track 66 : XianYue_68
- Track 67 : Caraxes_75
- Track 68 : BabyBack_67
- Track 69 : TipsytheTRex_72
- Track 70 : Loser_74
- Track 71 : Iwokeuplikedis_74
- Track 72 : Trooper_72
- Track 73 : Koduck_74
- Track 74 : Colin_72
- Track 75 : Anthony_69
- Track 76 : Popcicle_69, Veracruz_66, Caviar_69, Panamaxus_67, Lambert1_69, QuinnKiro_68, Todacoro_69, Hookmount_69, Pocahontas_68, ResDef_67, Margo_69
- Track 77 : Pawn_72, Kalnoky_74, ACFishhook_71, JeppNRM_74, Marius_74
- Track 78 : Daishi_73
- Track 79 : Penny1_74, Stagni_71, Dieselweasel_74, EpicPhail_75, AgronaGT15_71, Aglet_75, AugsMagnumOpus_77, Pembroke_74, GtownJaz_74,

Lilith_72, Bxz2_69, Malinsilva_76, SoYo_71, Marie_72, MuchMore_77,
 SoilDragon_73, Beauxregard13_73, Fernando_74, Grub_72, MadMarie_72,
 PGHhamlin_76, Ollie_74, BreSam8_74, HashRod_75, Grif_72, Sabinator_72,
 Watson_73, LarryKay_74

- Track 80 : Taurus_75, MarQuardt_74, Vix_70, Jobu08_70, GingkoMaracino_74,
 Grum1_73, Mainiac_73, Soshari_76, Sabia_72, Snickers_70, Phoxy_74, Tiffany_73,
 Wooldri_76, Hercules11_74, LBerry_75, Rummer_73, Spike509_74, JenCasNa_75,
 Methuselah_67, Cullens_74, LugYA_77, PotatoSplit_75, Anubis_77, JHC117_70,
 P28Green_74, MoneyMay_73, Microwolf_70, Colbster_70, Farber_74,
 DaHudson_73, Phoebe_75
- Track 81 : Kalb97_74, Heliosoles_71, PurpleHaze_73, Groupthink_74, Gemma_71,
 OlanP_72, PhishRPhriends_70, HaveUMetTed_74, Manu_73
- Track 82 : Rockstar_68, MK4_69, Isca_67, B1_61, MA5_69, JF4_67,
 Phantastic_71, JF2_67
- Track 83 : Norbert_65
- Track 84 : KADY_71
- Track 85 : Fred313_67, Scout_68, Heathen_69, HelDan_69
- Track 86 : Bugatti_69, Giroux_68, Idleandcovert_70, TNguyen7_70, BlueBird_72,
 SaturnRing_69, Puppy_70, Pistachio_69
- Track 87 : Misomonster_75, Louie6_73, BuzzBuzz_68
- Track 88 : BabyRay_70
- Track 89 : Zetzy_71
- Track 90 : Texage_67, Noella_69
- Track 91 : StepMih_73
- Track 92 : LochMonster_68, Kingmustik0402_67, JoongJeon_66, Sparxx_68,
 Romney_66, MeeZee_66, PeterPeter_67, Peaches_65, NorthStar_65, Eapen_67,
 Deano_64, Alberto7_68, Kyee_67, KFPoly_66, NotAPhaseMom_66,
 Connomayer_67, Scamp_67, Camperdownii_65, LittleB_67, Phighter1804_67,
 Arturo_64, Druantia_66, Eros_67, LittleGuy_67, Ulysses_66, Holli_66,
 TygerBlood_67, Citius_67, Caelakin_66, Skipitt_66, Lunsford_65, Phontbonne_67,
 Kamy_66, Medusa_67, Phacado_67, Funston_66, OKaNui_66, Clarenza_66,
 Sabertooth_67, Mazhar510_67, Burger_65, Millski_66, Taquarus_66,
 Commander_65, Bartimeaus_67, Lorenzo_67, Nyxis_66, YoSam321_67, Relief_66,
 Wander_67, Albee_67, Maxo_68, Flux_67, Maverick_66, Eris_66, Blackmoor_66,
 TiroTheta9_66, Shaka_65, Melvin_69, HamSlice_63, Jaykayelowell_64,
 Broseidon_67, Koreni_66, Cocoaberry_67, Gadost_67, Annyong_66, Baby16_67,
 Tinybot_66, LappelDuVide_63, Iracema64_67, DirtyDunning_66, Houdini22_66,
 Avle17_67, Iceman_66, Chaph_67, Pumbaa_67, Wilbur_67, Spino_66, Bruiser_66,
 Roosevelt_65, TinaFeyge_65, Ruin_67, Florean_67, Palestino_66, Nemo27_66,
 Bombshell_67, Dhanush_67, Abdiel_67, Pipcraft_64
- Track 93 : BellusTerra_68, Kremtemulon_63, Obama12_68, LHTSCC_69,
 ChampagnePapi_69, ICleared_66, Kratark_66, Cerulean_68, Shygu2_66,
 Happiness_66, TroyPia_68, Cintron_67, Eurydice_68, Eagle_66, Ohfah_68,
 Phelipe_68, Polymorphads_67, SheldonCooper_67, BangNhom_65, Nebs_68,
 CentreCat_67, Morrow_68, JetBlade_67, LeoAvram_66
- Track 94 : Bumblebee11_65, AbbysRanger_66, Mundrea_66, Backyardigan_64,
 BubbleTrouble_66, PetiteSangsue_66, Wizard007_66, Morpher26_66, Xena_65,
 Katalie136_66, Cici_66, Datway_66, Perplexer_66, Cindaradix_63, Achebe_65,
 Wile_65, Badger_65
- Track 95 : Stasia_66
- Track 96 : Miramae_66, AvatarAhPeg_66, Stink_62
- Track 97 : Noelle_67
- Track 98 : Thanksgivukkah_66

- Track 99 : Lemur_67
- Track 100 : Tarynearal_65, Micasa_64, LittleCherry_65, Swirley_66, Bonamassa_66, Dublin_66, MarysWell_66, HuhtaEnerson15_64, Milcery_66
- Track 101 : Blinn1_78
- Track 102 : Fayely_72
- Track 103 : Myxus_74, Priya_72, Catalina_76, EmyBug_68, Aliter_75, Pioneer_74, Phonnegut_74, Conquerage_72, Alma_72, Spouty_69, HortumSL17_75, PackMan_73, Tubs_74, Qobbit_72, Beemo_74, Phaeder_74, ExplosioNervosa_72, Scherzo_73, Ugenie5_69, Eidsmoe_72
- Track 104 : Rahalelujah_74
- Track 105 : Keziacharles14_71
- Track 106 : LoneWolf_75
- Track 107 : SheaKeira_68
- Track 108 : Yecey3_76

Summary of Final Annotations (See graph section above for start numbers):

The start number called the most often in the published annotations is 29, it was called in 133 of the 421 non-draft genes in the pham.

Genes that call this "Most Annotated" start:

- AbbysRanger_66, Abdiel_67, Achebe_65, Albee_67, Alberto7_68, Annyong_66, Arturo_64, AvatarAhPeg_66, Avle17_67, Baby16_67, Backyardigan_64, Badger_65, BangNhom_65, Bartimeaus_67, BellusTerra_68, Blackmoor_66, Bombshell_67, Broseidon_67, Bruiser_66, BubbleTrouble_66, Bumblebee11_65, Burger_65, Caelakin_66, Camperdownii_65, CentreCat_67, Cerulean_68, ChampagnePapi_69, Chaph_67, Cici_66, Cindaradix_63, Cintron_67, Citius_67, Clarenza_66, Cocoaberry_67, Commander_65, Connomayer_67, Datway_66, Deano_64, Dhanush_67, DirtyDunning_66, Druantia_66, Eagle_66, Eapen_67, Eris_66, Eros_67, Eurydice_68, Florean_67, Flux_67, Funston_66, Gadost_67, HamSlice_63, Happiness_66, Holli_66, Houdini22_66, ICleared_66, Iceman_66, Iracema64_67, Jaykayelowell_64, JetBlade_67, JoongJeon_66, KFPoly_66, Kampy_66, Katalie136_66, Kingmustik0402_67, Koreni_66, Kratark_66, Kremtemulon_63, Kyee_67, LHTSCC_69, LappelDuVide_63, Lemur_67, LeoAvram_66, LittleB_67, LittleGuy_67, LochMonster_68, Lorenzo_67, Lunsford_65, Maverick_66, Maxo_68, Mazhar510_67, Medusa_67, MeeZee_66, Melvin_69, Millski_66, Miramae_66, Morpher26_66, Morrow_68, Mundrea_66, Nebs_68, Nemo27_66, Noelle_67, NorthStar_65, NotAPhaseMom_66, Nyxis_66, OKaNui_66, Obama12_68, Ohfah_68, Palestino_66, Peaches_65, Perplexer_66, PeterPeter_67, PetiteSangsue_66, Phacado_67, Phelipe_68, Phighter1804_67, Phontbonne_67, Pipcraft_64, Polymorphads_67, Pumbaa_67, Relief_66, Romney_66, Roosevelt_65, Ruin_67, Sabertooth_67, Scamp_67, Shaka_65, SheldonCooper_67, Shygu2_66, Skipitt_66, Sparxx_68, Spino_66, Stasia_66, Stink_62, Taquarus_66, Thanksgivukkah_66, TinaFeyge_65, Tinybot_66, TiroTheta9_66, TroyPia_68, TygerBlood_67, Ulysses_66, Wander_67, Wilbur_67, Wile_65, Wizard007_66, Xena_65, YoSam321_67,

Genes that have the "Most Annotated" start but do not call it:

-

Genes that do not have the "Most Annotated" start:

• 20ES_74, 40AC_71, ACFishhook_71, AN9_75, ANI8_75, Acolyte_63, Adzzy_76, Agape74_74, Aglet_75, AgronaGT15_71, Aliter_75, Alma_72, Aneem_76, AnnaL29_72, Anselm_74, Anthony_69, Anubis_77, ArcherNM_66, AugsMagnumOpus_77, B1_61, BabyBack_67, BabyRay_70, Bachome_73, Baehexic_71, Beauxregard13_73, Beemo_74, BengiVuitton_72, Benvolio_70, BiancaTri92_71, Blinn1_78, BlueBird_72, BobSwaget_65, Bonamassa_66, Bowtie_76, BreSam8_74, Bud_70, Bugatti_69, Buggy_74, BuzzBuzz_68, Bxz2_69, C3_68, CRB1_74, Caraxes_75, Catalina_76, Caviar_69, Centaur_73, Changeling_71, Che12_76, ChipMunk_73, Chupacabra_64, Colbster_70, Colin_72, Conquerage_72, Crucio_73, Cullens_74, D29_68.1, D32_74, DBQu4n_75, DaHudson_73, Daishi_73, Dalmatian_73, DarthPhader_70, Deloris_72, Dieselweasel_74, Dignity_74, Drake55_74, Drake94_64, Dublin_66, DudeLittle_71, Duplo_75, EZMoney23_69, EagleEye_77, Eaglepride_68, Ebony_75, Echild_73, Edison31_61, Eidsmoe_72, EmyBug_68, EpicPhail_75, Equemioh13_72, Et2Brutus_74, EvilGenius_72, ExplosioNervosa_72, Fameo_71, Farber_74, Fayely_72, Fernando_74, Fibonacci_74, FiringLine_73, First_0073, Flare16_73, Flaverint_76, Fred313_67, Gail_74, GaugeLDP_68, Gemma_71, Georgie2_74, Gilberta_72, GingkoMaracino_74, Giroux_68, Goose_67, Grif_72, Groupthink_74, Grub_72, Grum1_73, GtownJaz_74, HarryHoudini_73, HashRod_75, HaveUMetTed_74, Heathen_69, Heffalump_70, HelDan_69, Heliosoles_71, Hercules11_74, Hookmount_69, HortumSL17_75, HuhtaEnerson15_64, Hutc2_70, Idleandcovert_70, Insomnia_72, IronMan_70, Isca_67, Iwokeuplikedis_74, JF2_67, JF4_67, JHC117_70, Jaan_71, Jabith_74, Jeeves_76, JenCasNa_75, JeppNRM_74, Jerm_74, Jobu08_70, Joselito_74, JoshKayV_73, Jsquared_76, KADY_71, Kalb97_74, Kalnoky_74, Kalpine_72, Kerberos_75, Keziacharles14_71, Kimona_66, KingCyrus_72, KittenMittens_63, Koduck_74, Kristoff_65, L5_68.1, LBerry_75, LadyBird_76, Lambert1_69, Landor_71, Larenn_69, LarryKay_74, Leogania_71, Leviathan_74, LilTurb_73, Lilith_72, LittleCherry_65, Lokk_66, LoneWolf_75, Loser_74, Louie6_73, Luchador_75, Lucivia_76, Lucyedi_76, LugYA_77, MA5_69, MK4_69, MaCh_75, Mabel_75, MadMarie_72, Mainiac_73, Malec_70, Malinsilva_76, Manu_73, MarQuardt_74, Margo_69, Marie_72, Marius_74, MarysWell_66, Methuselah_67, Micasa_64, Microwolf_70, MiculUcigas_73, Miko_66, Milcery_66, Misomonster_75, MissWhite_71, MoneyMay_73, MuchMore_77, Mulciber_73, Munch_75, Myxus_74, NaSiaTalie_73, Naji_75, NicoleTera_70, Noella_69, Norbert_65, NothingSpecial_68, OKCentral2016_65, Odin_73, OlanP_72, Ollie_74, Orange_74, P28Green_74, PGHhamlin_76, PackMan_73, PainterBoy_75, Panamaxus_67, Pawn_72, PeaceMeal1_64, Pembroke_74, Penny1_74, Petersenfast_69, Ph8s_76, Phaded_68, Phaeder_74, Phantastic_71, Pharaoh_68, PhishRPhriends_70, Phoebe_75, Phonnegut_74, Phoxy_74, Pioneer_74, Piro94_72, Pistachio_69, Pocahontas_68, Pomar16_75, Poompha_63, Popcicle_69, PotatoSplit_75, Power_72, Priya_72, Pukovnik_69, Puppy_70, PurpleHaze_73, Qobbit_72, QueenB2_70, QueenBeesly_73, QuinnKiro_68, Rachaly_68, Rahalelujah_74, Rebeuca_67, RedRock_71, Refuge_70, ResDef_67, Retro23_73, RhynO_66, Rockstar_68, Rummer_73, Sabia_72, Sabinator_72, Salz_70, SaturnRing_69, Scherzo_73, Scout_68, SemperFi_73, Serenity_76, Severus_64, Sham4_71, SheaKeira_68, Smeagan_75, SnapTap_72, Snape_75, Snickers_70, SoYo_71, SoilDragon_73, SororFago_74, Soshari_76, Spike509_74, Spouty_69, Stagni_71, StarStuff_75, Steamy_67, StepMih_73, Superchunk_74, SweetiePie_72, SwirlSquare_79, Swirley_66, TNguyen7_70, TarsusIV_70, Tarynearal_65, Taurus_75, Texage_67, Tiffany_73, Timothy_75, TinyTimmy_71, TipsytheTRex_72, Todacoro_69, Tomathan_75, Topanga_63, Trike_63, Trixie_72, Trooper_72, Tubs_74, Turbido_73, Twister_65, Ugenie5_69, Updawg_73, VC3_74, Veracruz_66, Vix_70, WalterMcMickey_65, Watson_73, WeiHuaDA_73, Whabigail7_73,

WideWale_73, Wooldri_76, XianYue_68, Yecey3_76, Zetzy_71, Zimmer_71,

Summary by start number:

Start 6:

- Found in 6 of 450 (1.3%) of genes in pham
- Manual Annotations of this start: 4 of 421
- Called 66.7% of time when present
- Phage (with cluster) where this start called: Adzzy_76 (A2), Che12_76 (A2), Ph8s_76 (A2), Superchunk_74 (A2),

Start 7:

- Found in 1 of 450 (0.2%) of genes in pham
- Manual Annotations of this start: 1 of 421
- Called 100.0% of time when present
- Phage (with cluster) where this start called: NothingSpecial_68 (A2),

Start 8:

- Found in 2 of 450 (0.4%) of genes in pham
- Manual Annotations of this start: 1 of 421
- Called 50.0% of time when present
- Phage (with cluster) where this start called: Blinn1_78 (A6),

Start 9:

- Found in 5 of 450 (1.1%) of genes in pham
- Manual Annotations of this start: 4 of 421
- Called 80.0% of time when present
- Phage (with cluster) where this start called: Jsquared_76 (A2), L5_68.1 (A2), Serenity_76 (A2), TipsytheTRex_72 (A2),

Start 10:

- Found in 1 of 450 (0.2%) of genes in pham
- Manual Annotations of this start: 1 of 421
- Called 100.0% of time when present
- Phage (with cluster) where this start called: OKCentral2016_65 (A10),

Start 12:

- Found in 1 of 450 (0.2%) of genes in pham
- Manual Annotations of this start: 1 of 421
- Called 100.0% of time when present
- Phage (with cluster) where this start called: Rahalelujah_74 (A9),

Start 13:

- Found in 1 of 450 (0.2%) of genes in pham
- Manual Annotations of this start: 1 of 421
- Called 100.0% of time when present
- Phage (with cluster) where this start called: RhynO_66 (A10),

Start 15:

- Found in 26 of 450 (5.8%) of genes in pham
- Manual Annotations of this start: 23 of 421
- Called 100.0% of time when present

- Phage (with cluster) where this start called: Aneem_76 (A11), Bachome_73 (A11), Bowtie_76 (A11), Bud_70 (A11), Ebony_75 (A11), Et2Brutus_74 (A11), Fibonacci_74 (A11), Flaverint_76 (A11), Gilberta_72 (A11), Hutc2_70 (A11), Insomnia_72 (A11), Jabith_74 (A11), Joselito_74 (A11), Kimona_66 (A19), Lucivia_76 (A11), MaCh_75 (A11), Mabel_75 (A11), Mulciber_73 (A11), Munch_75 (A11), Orange_74 (A11), Petersenfast_69 (A11), Salz_70 (A11), Sham4_71 (A11), Snape_75 (A11), Timothy_75 (A11), TinyTimmy_71 (A11),

Start 16:

- Found in 40 of 450 (8.9%) of genes in pham
- Manual Annotations of this start: 31 of 421
- Called 87.5% of time when present
- Phage (with cluster) where this start called: Acolyte_63 (A2), Aliter_75 (A9), Alma_72 (A9), Beemo_74 (A9), Benvolio_70 (A2), Caraxes_75 (A2), Catalina_76 (A9), Conquerage_72 (A9), Echild_73 (A2), Eidsmoe_72 (A9), EmyBug_68 (A9), ExplosioNervosa_72 (A9), Fayely_72 (A9), Gail_74 (A14), HortumSL17_75 (A9), Jeeves_76 (A14), Keziacharles14_71 (A9), Luchador_75 (A14), Myxus_74 (A9), Odin_73 (A2), PackMan_73 (A9), Phaeder_74 (A9), Pharaoh_68 (A12), Phonnegut_74 (A9), Pioneer_74 (A9), Priya_72 (A9), Pukovnik_69 (A2), Qobbit_72 (A9), Scherzo_73 (A9), SheaKeira_68 (A9), SororFago_74 (A14), Spouty_69 (A9), SwirlSquare_79 (A2), Tubs_74 (A9), Ugenie5_69 (A9),

Start 17:

- Found in 8 of 450 (1.8%) of genes in pham
- Manual Annotations of this start: 8 of 421
- Called 100.0% of time when present
- Phage (with cluster) where this start called: ChipMunk_73 (A2), DarthPhader_70 (A12), EvilGenius_72 (A2), KingCyrus_72 (A2), Refuge_70 (A12), Steamy_67 (A12), TarsusIV_70 (A2), Zimmer_71 (A12),

Start 18:

- Found in 40 of 450 (8.9%) of genes in pham
- Manual Annotations of this start: 39 of 421
- Called 100.0% of time when present
- Phage (with cluster) where this start called: Anselm_74 (A2), Baehexic_71 (A2), Buggy_74 (A2), CRB1_74 (A2), Centaur_73 (A2), Crucio_73 (A2), Dalmatian_73 (A2), Dignity_74 (A2), Drake55_74 (A2), DudeLittle_71 (A2), EagleEye_77 (A16), Equemioh13_72 (A2), Fameo_71 (A2), FiringLine_73 (A2), Flare16_73 (A2), Georgie2_74 (A2), HarryHoudini_73 (A2), Heffalump_70 (A2), Jerm_74 (A2), JoshKayV_73 (A2), Leviathan_74 (A2), LilTurb_73 (A2), LoneWolf_75 (A9), Lucyedi_76 (A16), MiculUcigas_73 (A2), NaSiaTalie_73 (A2), PainterBoy_75 (A16), Piro94_72 (A2), Power_72 (A2), QueenB2_70 (A2), QueenBeesly_73 (A2), Retro23_73 (A2), SemperFi_73 (A2), Smeagan_75 (A2), SnapTap_72 (A2), SweetiePie_72 (A2), Turbido_73 (A2), Updawg_73 (A2), Whabigail7_73 (A2), WideWale_73 (A2),

Start 19:

- Found in 13 of 450 (2.9%) of genes in pham
- Manual Annotations of this start: 13 of 421
- Called 100.0% of time when present
- Phage (with cluster) where this start called: Agape74_74 (A2), BengiVuitton_72 (A2), Deloris_72 (A2), Drake94_64 (A10), KittenMittens_63 (A10), Kristoff_65 (A10), LadyBird_76 (A2), PeaceMeal1_64 (A10), Poompha_63 (A10), Rebeuca_67 (A10),

Severus_64 (A10), Trike_63 (A10), XianYue_68 (A2),

Start 20:

- Found in 36 of 450 (8.0%) of genes in pham
- Manual Annotations of this start: 30 of 421
- Called 100.0% of time when present
- Phage (with cluster) where this start called: 20ES_74 (A2), 40AC_71 (A17), ACFishhook_71 (A3), AnnaL29_72 (A2), ArcherNM_66 (A2), BabyRay_70 (A3), BiancaTri92_71 (A2), BobSwaget_65 (A2), Changeling_71 (A2), EZMoney23_69 (A2), First_0073 (A2), Gemma_71 (A3), Groupthink_74 (A3), HaveUMetTed_74 (A3), Heliosoles_71 (A3), JeppNRM_74 (A3), Kalb97_74 (A3), Kalnoky_74 (A3), Larenn_69 (A2), Leogania_71 (A2), Lokk_66 (A2), Loser_74 (A2), Malec_70 (A2), Manu_73 (A3), Marius_74 (A3), Miko_66 (A2), NicoleTera_70 (A2), OlanP_72 (A3), Pawn_72 (A3), PhishRPhriends_70 (A3), PurpleHaze_73 (A3), Rachaly_68 (A2), RedRock_71 (A2), Trooper_72 (A2), WeiHuaDA_73 (A2), Yecy3_76 (A9),

Start 21:

- Found in 5 of 450 (1.1%) of genes in pham
- Manual Annotations of this start: 3 of 421
- Called 100.0% of time when present
- Phage (with cluster) where this start called: BabyBack_67 (A2), Colin_72 (A2), GaugeLDP_68 (A2), Kalpine_72 (A2), Trixie_72 (A2),

Start 22:

- Found in 18 of 450 (4.0%) of genes in pham
- Manual Annotations of this start: 17 of 421
- Called 100.0% of time when present
- Phage (with cluster) where this start called: AN9_75 (A2), ANI8_75 (A2), C3_68 (A2), D29_68.1 (A2), D32_74 (A2), DBQu4n_75 (A2), Duplo_75 (A2), IronMan_70 (A2), Jaan_71 (A2), Kerberos_75 (A2), Landor_71 (A2), MissWhite_71 (A2), Naji_75 (A2), Phaded_68 (A2), Pomar16_75 (A2), StarStuff_75 (A2), Tomathan_75 (A2), VC3_74 (A2),

Start 23:

- Found in 73 of 450 (16.2%) of genes in pham
- Manual Annotations of this start: 37 of 421
- Called 53.4% of time when present
- Phage (with cluster) where this start called: Anubis_77 (A3), BuzzBuzz_68 (A3), Colbster_70 (A3), Cullens_74 (A3), DaHudson_73 (A3), Edison31_61 (A10), Farber_74 (A3), GingkoMaracino_74 (A3), Grum1_73 (A3), Hercules11_74 (A3), JHC117_70 (A3), JenCasNa_75 (A3), Jobu08_70 (A3), LBerry_75 (A3), Louie6_73 (A3), LugYA_77 (A3), Mainiac_73 (A3), MarQuardt_74 (A3), Methuselah_67 (A3), Microwolf_70 (A3), Misomonster_75 (A3), MoneyMay_73 (A3), P28Green_74 (A3), Phoebe_75 (A3), Phoxy_74 (A3), PotatoSplit_75 (A3), Rummer_73 (A3), Sabia_72 (A3), Snickers_70 (A3), Soshari_76 (A3), Spike509_74 (A3), Taurus_75 (A3), Tiffany_73 (A3), Topanga_63 (A10), Twister_65 (A10), Vix_70 (A3), WalterMcMickey_65 (A10), Wooldri_76 (A3), Zetzy_71 (A3),

Start 25:

- Found in 1 of 450 (0.2%) of genes in pham
- Manual Annotations of this start: 1 of 421
- Called 100.0% of time when present
- Phage (with cluster) where this start called: Anthony_69 (A20),

Start 26:

- Found in 92 of 450 (20.4%) of genes in pham
- Manual Annotations of this start: 55 of 421
- Called 60.9% of time when present
- Phage (with cluster) where this start called: Aglet_75 (A3), AgronaGT15_71 (A3), AugsMagnumOpus_77 (A3), B1_61 (A3), Beauxregard13_73 (A3), BreSam8_74 (A3), Bxz2_69 (A3), Caviar_69 (A3), Daishi_73 (A3), Dieselweasel_74 (A3), EpicPhail_75 (A3), Fernando_74 (A3), Fred313_67 (A3), Grif_72 (A3), Grub_72 (A3), GtownJaz_74 (A3), HashRod_75 (A3), Heathen_69 (A3), HelDan_69 (A3), Hookmount_69 (A3), Isca_67 (A3), JF2_67 (A3), JF4_67 (A3), KADY_71 (A3), Lambert1_69 (A3), LarryKay_74 (A3), Lilith_72 (A3), MA5_69 (A3), MK4_69 (A3), MadMarie_72 (A3), Malinsilva_76 (A3), Margo_69 (A3), Marie_72 (A3), MuchMore_77 (A3), Noella_69 (A3), Norbert_65 (A3), Ollie_74 (A3), PGHhamlin_76 (A3), Panamaxus_67 (A3), Pembroke_74 (A3), Penny1_74 (A3), Phantastic_71 (A3), Pocahontas_68 (A3), Popcicle_69 (A3), QuinnKiro_68 (A3), ResDef_67 (A3), Rockstar_68 (A3), Sabinator_72 (A3), Scout_68 (A3), SoYo_71 (A3), SoilDragon_73 (A3), Stagni_71 (A3), Texage_67 (A3), Todacoro_69 (A3), Veracruz_66 (A3), Watson_73 (A3),

Start 29:

- Found in 137 of 450 (30.4%) of genes in pham
- Manual Annotations of this start: 133 of 421
- Called 100.0% of time when present
- Phage (with cluster) where this start called: AbbysRanger_66 (A4), Abdiel_67 (A4), Achebe_65 (A4), Albee_67 (A4), Alberto7_68 (A4), Annyong_66 (A4), Arturo_64 (A4), AvatarAhPeg_66 (A4), Avle17_67 (A4), Baby16_67 (A4), Backyardigan_64 (A4), Badger_65 (A4), BangNhom_65 (A4), Bartimeaus_67 (A4), BellusTerra_68 (A4), Blackmoor_66 (A4), Bombshell_67 (A4), Broseidon_67 (A4), Bruiser_66 (A4), BubbleTrouble_66 (A4), Bumblebee11_65 (A4), Burger_65 (A4), Caelakin_66 (A4), Camperdownii_65 (A4), CentreCat_67 (A4), Cerulean_68 (A4), ChampagnePapi_69 (A4), Chaph_67 (A4), Cici_66 (A4), Cindaradix_63 (A4), Cintron_67 (A4), Citius_67 (A4), Clarenza_66 (A4), Cocoaberry_67 (A4), Commander_65 (A4), Connomayer_67 (A4), Datway_66 (A4), Deano_64 (A4), Dhanush_67 (A4), DirtyDunning_66 (A4), Druantia_66 (A4), Eagle_66 (A4), Eapen_67 (A4), Eris_66 (A4), Eros_67 (A4), Eurydice_68 (A4), Florean_67 (A4), Flux_67 (A4), Funston_66 (A4), Gadost_67 (A4), HamSlice_63 (A4), Happiness_66 (A4), Holli_66 (A4), Houdini22_66 (A4), ICleared_66 (A4), Iceman_66 (A4), Iracema64_67 (A4), Jaykayelowell_64 (A4), JetBlade_67 (A4), JoongJeon_66 (A4), KFPoly_66 (A4), Kampy_66 (A4), Katalie136_66 (A4), Kingmustik0402_67 (A4), Koreni_66 (A4), Kratark_66 (A4), Kremtemulon_63 (A4), Kyee_67 (A4), LHTSCC_69 (A4), LappelDuVide_63 (A4), Lemur_67 (A4), LeoAvram_66 (A4), LittleB_67 (A4), LittleGuy_67 (A4), LochMonster_68 (A4), Lorenzo_67 (A4), Lunsford_65 (A4), Maverick_66 (A4), Maxo_68 (A4), Mazhar510_67 (A4), Medusa_67 (A4), MeeZee_66 (A4), Melvin_69 (A4), Millski_66 (A4), Miramae_66 (A4), Morpher26_66 (A4), Morrow_68 (A4), Mundrea_66 (A4), Nebs_68 (A4), Nemo27_66 (A4), Noelle_67 (A4), NorthStar_65 (A4), NotAPhaseMom_66 (A4), Nyxis_66 (A4), OKaNui_66 (A4), Obama12_68 (A4), Ohfah_68 (A4), Palestino_66 (A4), Peaches_65 (A4), Perplexer_66 (A4), PeterPeter_67 (A4), PetiteSangsue_66 (A4), Phacado_67 (A4), Phelipe_68 (A4), Phighter1804_67 (A4), Phontbonne_67 (A4), Pipcraft_64 (A4), Polymorphads_67 (A4), Pumbaa_67 (A4), Relief_66 (A4), Romney_66 (A4), Roosevelt_65 (A4), Ruin_67 (A4), Sabertooth_67 (A4), Scamp_67 (A4), Shaka_65 (A4), SheldonCooper_67 (A4), Shygu2_66 (A4), Skipitt_66 (A4), Sparxx_68 (A4), Spino_66

(A4), Stasia_66 (A4), Stink_62 (A4), Taquarus_66 (A4), Thanksgivukkah_66 (A4), TinaFeyge_65 (A4), Tinybot_66 (A4), TiroTheta9_66 (A4), TroyPia_68 (A4), TygerBlood_67 (A4), Ulysses_66 (A4), Wander_67 (A4), Wilbur_67 (A4), Wile_65 (A4), Wizard007_66 (A4), Xena_65 (A4), YoSam321_67 (A4),

Start 31:

- Found in 13 of 450 (2.9%) of genes in pham
- Manual Annotations of this start: 11 of 421
- Called 92.3% of time when present
- Phage (with cluster) where this start called: Bonamassa_66 (A5), Chupacabra_64 (A10), Dublin_66 (A5), Eaglepride_68 (A10), Goose_67 (A10), HuhtaEnerson15_64 (A5), LittleCherry_65 (A5), MarysWell_66 (A5), Micasa_64 (A5), Milcery_66 (A5), Swirley_66 (A5), Tarynearal_65 (A5),

Start 32:

- Found in 8 of 450 (1.8%) of genes in pham
- Manual Annotations of this start: 5 of 421
- Called 100.0% of time when present
- Phage (with cluster) where this start called: BlueBird_72 (A3), Bugatti_69 (A3), Giroux_68 (A3), Idleandcovert_70 (A3), Pistachio_69 (A3), Puppy_70 (A3), SaturnRing_69 (A3), TNguyen7_70 (A3),

Start 35:

- Found in 118 of 450 (26.2%) of genes in pham
- Manual Annotations of this start: 1 of 421
- Called 0.8% of time when present
- Phage (with cluster) where this start called: Iwokeuplikedis_74 (A2),

Start 36:

- Found in 198 of 450 (44.0%) of genes in pham
- Manual Annotations of this start: 1 of 421
- Called 1.0% of time when present
- Phage (with cluster) where this start called: Koduck_74 (A2), StepMih_73 (A3),

Summary by clusters:

There are 14 clusters represented in this pham: A20, A14, A17, A16, A11, A10, A12, A19, A3, A2, A5, A4, A6, A9,

Info for manual annotations of cluster A10:

- Start number 10 was manually annotated 1 time for cluster A10.
- Start number 13 was manually annotated 1 time for cluster A10.
- Start number 19 was manually annotated 8 times for cluster A10.
- Start number 23 was manually annotated 3 times for cluster A10.
- Start number 31 was manually annotated 3 times for cluster A10.

Info for manual annotations of cluster A11:

- Start number 15 was manually annotated 22 times for cluster A11.

Info for manual annotations of cluster A12:

- Start number 16 was manually annotated 1 time for cluster A12.
- Start number 17 was manually annotated 4 times for cluster A12.

Info for manual annotations of cluster A14:

- Start number 16 was manually annotated 4 times for cluster A14.

Info for manual annotations of cluster A16:

- Start number 18 was manually annotated 3 times for cluster A16.

Info for manual annotations of cluster A19:

- Start number 15 was manually annotated 1 time for cluster A19.

Info for manual annotations of cluster A2:

- Start number 6 was manually annotated 4 times for cluster A2.
- Start number 7 was manually annotated 1 time for cluster A2.
- Start number 9 was manually annotated 4 times for cluster A2.
- Start number 16 was manually annotated 5 times for cluster A2.
- Start number 17 was manually annotated 4 times for cluster A2.
- Start number 18 was manually annotated 35 times for cluster A2.
- Start number 19 was manually annotated 5 times for cluster A2.
- Start number 20 was manually annotated 15 times for cluster A2.
- Start number 21 was manually annotated 3 times for cluster A2.
- Start number 22 was manually annotated 17 times for cluster A2.
- Start number 35 was manually annotated 1 time for cluster A2.

Info for manual annotations of cluster A20:

- Start number 25 was manually annotated 1 time for cluster A20.

Info for manual annotations of cluster A3:

- Start number 20 was manually annotated 14 times for cluster A3.
- Start number 23 was manually annotated 34 times for cluster A3.
- Start number 26 was manually annotated 55 times for cluster A3.
- Start number 32 was manually annotated 5 times for cluster A3.
- Start number 36 was manually annotated 1 time for cluster A3.

Info for manual annotations of cluster A4:

- Start number 29 was manually annotated 133 times for cluster A4.

Info for manual annotations of cluster A5:

- Start number 31 was manually annotated 8 times for cluster A5.

Info for manual annotations of cluster A6:

- Start number 8 was manually annotated 1 time for cluster A6.

Info for manual annotations of cluster A9:

- Start number 12 was manually annotated 1 time for cluster A9.
- Start number 16 was manually annotated 21 times for cluster A9.
- Start number 18 was manually annotated 1 time for cluster A9.
- Start number 20 was manually annotated 1 time for cluster A9.

Gene Information:

Gene: 20ES_74 Start: 43517, Stop: 43293, Start Num: 20

Candidate Starts for 20ES_74:

(Start: 20 @43517 has 30 MA's), (Start: 35 @43466 has 1 MA's), (49, 43331), (51, 43328), (57, 43301),

Gene: 40AC_71 Start: 44020, Stop: 43796, Start Num: 20

Candidate Starts for 40AC_71:

(Start: 20 @44020 has 30 MA's), (49, 43834), (51, 43831),

Gene: ACFishhook_71 Start: 42736, Stop: 42518, Start Num: 20

Candidate Starts for ACFishhook_71:

(4, 42805), (Start: 20 @42736 has 30 MA's), (Start: 36 @42697 has 1 MA's), (42, 42661), (44, 42628), (49, 42568), (60, 42523),

Gene: AN9_75 Start: 43459, Stop: 43217, Start Num: 22

Candidate Starts for AN9_75:

(Start: 22 @43459 has 17 MA's), (Start: 35 @43405 has 1 MA's), (38, 43381), (48, 43273),

Gene: ANI8_75 Start: 43459, Stop: 43217, Start Num: 22

Candidate Starts for ANI8_75:

(Start: 22 @43459 has 17 MA's), (Start: 35 @43405 has 1 MA's), (38, 43381), (48, 43273),

Gene: AbbysRanger_66 Start: 42647, Stop: 42423, Start Num: 29

Candidate Starts for AbbysRanger_66:

(Start: 29 @42647 has 133 MA's), (39, 42590), (40, 42584), (44, 42533), (60, 42428),

Gene: Abdiel_67 Start: 42370, Stop: 42173, Start Num: 29

Candidate Starts for Abdiel_67:

(Start: 29 @42370 has 133 MA's), (39, 42313), (60, 42178),

Gene: Achebe_65 Start: 42630, Stop: 42406, Start Num: 29

Candidate Starts for Achebe_65:

(Start: 29 @42630 has 133 MA's), (39, 42573), (40, 42567), (44, 42516), (60, 42411),

Gene: Acolyte_63 Start: 41528, Stop: 41301, Start Num: 16

Candidate Starts for Acolyte_63:

(Start: 16 @41528 has 31 MA's), (Start: 35 @41474 has 1 MA's), (Start: 36 @41468 has 1 MA's), (49, 41339),

Gene: Adzzy_76 Start: 42404, Stop: 42165, Start Num: 6

Candidate Starts for Adzzy_76:

(1, 42464), (Start: 6 @42404 has 4 MA's), (Start: 16 @42365 has 31 MA's), (Start: 35 @42311 has 1 MA's), (Start: 36 @42305 has 1 MA's), (38, 42287), (51, 42173),

Gene: Agape74_74 Start: 43761, Stop: 43537, Start Num: 19

Candidate Starts for Agape74_74:

(Start: 19 @43761 has 13 MA's), (48, 43578), (49, 43575), (51, 43572),

Gene: Aglet_75 Start: 42842, Stop: 42630, Start Num: 26

Candidate Starts for Aglet_75:

(Start: 23 @42845 has 37 MA's), (Start: 26 @42842 has 55 MA's), (Start: 36 @42809 has 1 MA's), (49, 42680), (60, 42635),

Gene: AgronaGT15_71 Start: 42690, Stop: 42478, Start Num: 26

Candidate Starts for AgronaGT15_71:

(Start: 23 @42693 has 37 MA's), (Start: 26 @42690 has 55 MA's), (Start: 36 @42657 has 1 MA's),
(49, 42528), (60, 42483),

Gene: Albee_67 Start: 42357, Stop: 42160, Start Num: 29

Candidate Starts for Albee_67:

(Start: 29 @42357 has 133 MA's), (39, 42300), (60, 42165),

Gene: Alberto7_68 Start: 42694, Stop: 42497, Start Num: 29

Candidate Starts for Alberto7_68:

(Start: 29 @42694 has 133 MA's), (39, 42637), (60, 42502),

Gene: Aliter_75 Start: 42851, Stop: 42633, Start Num: 16

Candidate Starts for Aliter_75:

(Start: 16 @42851 has 31 MA's), (Start: 36 @42794 has 1 MA's), (38, 42776),

Gene: Alma_72 Start: 42828, Stop: 42610, Start Num: 16

Candidate Starts for Alma_72:

(Start: 16 @42828 has 31 MA's), (Start: 36 @42771 has 1 MA's), (38, 42753),

Gene: Aneem_76 Start: 43515, Stop: 43288, Start Num: 15

Candidate Starts for Aneem_76:

(Start: 15 @43515 has 23 MA's), (Start: 35 @43461 has 1 MA's), (Start: 36 @43455 has 1 MA's), (44,
43383),

Gene: AnnaL29_72 Start: 43717, Stop: 43493, Start Num: 20

Candidate Starts for AnnaL29_72:

(Start: 20 @43717 has 30 MA's), (Start: 23 @43714 has 37 MA's), (Start: 35 @43666 has 1 MA's),
(49, 43531), (51, 43528),

Gene: Annyong_66 Start: 42402, Stop: 42205, Start Num: 29

Candidate Starts for Annyong_66:

(Start: 29 @42402 has 133 MA's), (39, 42345), (60, 42210),

Gene: Anselm_74 Start: 43911, Stop: 43687, Start Num: 18

Candidate Starts for Anselm_74:

(Start: 18 @43911 has 39 MA's), (48, 43728), (49, 43725), (51, 43722),

Gene: Anthony_69 Start: 41982, Stop: 41797, Start Num: 25

Candidate Starts for Anthony_69:

(24, 41985), (Start: 25 @41982 has 1 MA's), (43, 41889), (51, 41805),

Gene: Anubis_77 Start: 42731, Stop: 42516, Start Num: 23

Candidate Starts for Anubis_77:

(Start: 23 @42731 has 37 MA's), (Start: 26 @42728 has 55 MA's), (Start: 36 @42695 has 1 MA's),
(49, 42566), (60, 42521),

Gene: ArcherNM_66 Start: 42985, Stop: 42764, Start Num: 20

Candidate Starts for ArcherNM_66:

(Start: 20 @42985 has 30 MA's), (Start: 35 @42931 has 1 MA's), (51, 42799),

Gene: Arturo_64 Start: 42484, Stop: 42287, Start Num: 29

Candidate Starts for Arturo_64:

(Start: 29 @42484 has 133 MA's), (39, 42427), (60, 42292),

Gene: AugsMagnumOpus_77 Start: 42833, Stop: 42621, Start Num: 26

Candidate Starts for AugsMagnumOpus_77:

(Start: 23 @42836 has 37 MA's), (Start: 26 @42833 has 55 MA's), (Start: 36 @42800 has 1 MA's), (49, 42671), (60, 42626),

Gene: AvatarAhPeg_66 Start: 42517, Stop: 42293, Start Num: 29

Candidate Starts for AvatarAhPeg_66:

(Start: 29 @42517 has 133 MA's), (39, 42460), (40, 42454), (60, 42298),

Gene: Avle17_67 Start: 42354, Stop: 42157, Start Num: 29

Candidate Starts for Avle17_67:

(Start: 29 @42354 has 133 MA's), (39, 42297), (60, 42162),

Gene: B1_61 Start: 40764, Stop: 40540, Start Num: 26

Candidate Starts for B1_61:

(Start: 26 @40764 has 55 MA's), (28, 40758), (Start: 36 @40722 has 1 MA's), (60, 40545),

Gene: Baby16_67 Start: 42368, Stop: 42171, Start Num: 29

Candidate Starts for Baby16_67:

(Start: 29 @42368 has 133 MA's), (39, 42311), (60, 42176),

Gene: BabyBack_67 Start: 43490, Stop: 43272, Start Num: 21

Candidate Starts for BabyBack_67:

(Start: 21 @43490 has 3 MA's), (Start: 35 @43439 has 1 MA's), (38, 43415), (49, 43310),

Gene: BabyRay_70 Start: 42572, Stop: 42345, Start Num: 20

Candidate Starts for BabyRay_70:

(4, 42641), (Start: 20 @42572 has 30 MA's), (Start: 36 @42527 has 1 MA's), (49, 42395), (60, 42350),

Gene: Bachome_73 Start: 42394, Stop: 42131, Start Num: 15

Candidate Starts for Bachome_73:

(Start: 15 @42394 has 23 MA's), (Start: 35 @42340 has 1 MA's), (Start: 36 @42334 has 1 MA's), (44, 42262), (56, 42175),

Gene: Backyardigan_64 Start: 42663, Stop: 42439, Start Num: 29

Candidate Starts for Backyardigan_64:

(Start: 29 @42663 has 133 MA's), (39, 42606), (40, 42600), (44, 42549), (60, 42444),

Gene: Badger_65 Start: 42631, Stop: 42407, Start Num: 29

Candidate Starts for Badger_65:

(Start: 29 @42631 has 133 MA's), (39, 42574), (40, 42568), (44, 42517), (60, 42412),

Gene: Baehexic_71 Start: 43242, Stop: 43015, Start Num: 18

Candidate Starts for Baehexic_71:

(Start: 18 @43242 has 39 MA's), (Start: 35 @43188 has 1 MA's), (51, 43050),

Gene: BangNhom_65 Start: 42796, Stop: 42572, Start Num: 29

Candidate Starts for BangNhom_65:

(Start: 29 @42796 has 133 MA's), (39, 42739), (40, 42733), (60, 42577),

Gene: Bartimeaus_67 Start: 42359, Stop: 42162, Start Num: 29

Candidate Starts for Bartimeaus_67:

(Start: 29 @42359 has 133 MA's), (39, 42302), (60, 42167),

Gene: Beauxregard13_73 Start: 42845, Stop: 42633, Start Num: 26

Candidate Starts for Beauxregard13_73:

(Start: 23 @42848 has 37 MA's), (Start: 26 @42845 has 55 MA's), (Start: 36 @42812 has 1 MA's), (49, 42683), (60, 42638),

Gene: Beemo_74 Start: 42869, Stop: 42651, Start Num: 16

Candidate Starts for Beemo_74:

(Start: 16 @42869 has 31 MA's), (Start: 36 @42812 has 1 MA's), (38, 42794),

Gene: BellusTerra_68 Start: 42397, Stop: 42173, Start Num: 29

Candidate Starts for BellusTerra_68:

(Start: 29 @42397 has 133 MA's), (39, 42340), (40, 42334), (60, 42178),

Gene: BengiVuitton_72 Start: 43467, Stop: 43270, Start Num: 19

Candidate Starts for BengiVuitton_72:

(Start: 19 @43467 has 13 MA's), (Start: 35 @43416 has 1 MA's), (Start: 36 @43410 has 1 MA's), (38, 43392),

Gene: Benvolio_70 Start: 43151, Stop: 42927, Start Num: 16

Candidate Starts for Benvolio_70:

(Start: 16 @43151 has 31 MA's), (Start: 35 @43100 has 1 MA's), (48, 42968), (49, 42965), (51, 42962),

Gene: BiancaTri92_71 Start: 43505, Stop: 43281, Start Num: 20

Candidate Starts for BiancaTri92_71:

(Start: 20 @43505 has 30 MA's), (Start: 35 @43454 has 1 MA's), (49, 43319), (57, 43289),

Gene: Blackmoor_66 Start: 42359, Stop: 42162, Start Num: 29

Candidate Starts for Blackmoor_66:

(Start: 29 @42359 has 133 MA's), (39, 42302), (60, 42167),

Gene: Blinn1_78 Start: 42893, Stop: 42633, Start Num: 8

Candidate Starts for Blinn1_78:

(Start: 8 @42893 has 1 MA's), (38, 42776), (51, 42668),

Gene: BlueBird_72 Start: 42595, Stop: 42392, Start Num: 32

Candidate Starts for BlueBird_72:

(Start: 32 @42595 has 5 MA's), (38, 42553), (49, 42442),

Gene: BobSwaget_65 Start: 41376, Stop: 41158, Start Num: 20

Candidate Starts for BobSwaget_65:

(Start: 20 @41376 has 30 MA's), (38, 41301), (49, 41196), (51, 41193),

Gene: Bombshell_67 Start: 42354, Stop: 42157, Start Num: 29

Candidate Starts for Bombshell_67:

(Start: 29 @42354 has 133 MA's), (39, 42297), (60, 42162),

Gene: Bonamassa_66 Start: 42093, Stop: 41791, Start Num: 31

Candidate Starts for Bonamassa_66:

(Start: 31 @42093 has 11 MA's), (39, 42039), (40, 42033), (50, 41922), (52, 41916), (61, 41874),

Gene: Bowtie_76 Start: 43522, Stop: 43295, Start Num: 15

Candidate Starts for Bowtie_76:

(Start: 15 @43522 has 23 MA's), (Start: 35 @43468 has 1 MA's), (Start: 36 @43462 has 1 MA's), (44, 43390),

Gene: BreSam8_74 Start: 42835, Stop: 42623, Start Num: 26

Candidate Starts for BreSam8_74:

(Start: 23 @42838 has 37 MA's), (Start: 26 @42835 has 55 MA's), (Start: 36 @42802 has 1 MA's), (49, 42673), (60, 42628),

Gene: Broseidon_67 Start: 42359, Stop: 42162, Start Num: 29

Candidate Starts for Broseidon_67:

(Start: 29 @42359 has 133 MA's), (39, 42302), (60, 42167),

Gene: Bruiser_66 Start: 42357, Stop: 42160, Start Num: 29

Candidate Starts for Bruiser_66:

(Start: 29 @42357 has 133 MA's), (39, 42300), (60, 42165),

Gene: BubbleTrouble_66 Start: 42384, Stop: 42160, Start Num: 29

Candidate Starts for BubbleTrouble_66:

(Start: 29 @42384 has 133 MA's), (39, 42327), (40, 42321), (44, 42270), (60, 42165),

Gene: Bud_70 Start: 41952, Stop: 41689, Start Num: 15

Candidate Starts for Bud_70:

(Start: 15 @41952 has 23 MA's), (Start: 35 @41898 has 1 MA's), (Start: 36 @41892 has 1 MA's), (44, 41820), (56, 41733),

Gene: Bugatti_69 Start: 42595, Stop: 42392, Start Num: 32

Candidate Starts for Bugatti_69:

(Start: 32 @42595 has 5 MA's), (38, 42553), (49, 42442),

Gene: Buggy_74 Start: 43814, Stop: 43590, Start Num: 18

Candidate Starts for Buggy_74:

(Start: 18 @43814 has 39 MA's), (Start: 35 @43763 has 1 MA's), (48, 43631), (49, 43628), (51, 43625),

Gene: Bumblebee11_65 Start: 42633, Stop: 42409, Start Num: 29

Candidate Starts for Bumblebee11_65:

(Start: 29 @42633 has 133 MA's), (39, 42576), (40, 42570), (44, 42519), (60, 42414),

Gene: Burger_65 Start: 42357, Stop: 42160, Start Num: 29

Candidate Starts for Burger_65:

(Start: 29 @42357 has 133 MA's), (39, 42300), (60, 42165),

Gene: BuzzBuzz_68 Start: 42872, Stop: 42657, Start Num: 23

Candidate Starts for BuzzBuzz_68:

(Start: 23 @42872 has 37 MA's), (Start: 26 @42869 has 55 MA's), (Start: 36 @42836 has 1 MA's), (60, 42662),

Gene: Bxz2_69 Start: 42876, Stop: 42664, Start Num: 26

Candidate Starts for Bxz2_69:

(Start: 23 @42879 has 37 MA's), (Start: 26 @42876 has 55 MA's), (Start: 36 @42843 has 1 MA's), (49, 42714), (60, 42669),

Gene: C3_68 Start: 43459, Stop: 43217, Start Num: 22

Candidate Starts for C3_68:

(Start: 22 @43459 has 17 MA's), (Start: 35 @43405 has 1 MA's), (38, 43381), (48, 43273),

Gene: CRB1_74 Start: 44013, Stop: 43816, Start Num: 18

Candidate Starts for CRB1_74:

(Start: 18 @44013 has 39 MA's), (Start: 35 @43962 has 1 MA's), (38, 43938), (51, 43824),

Gene: Caelakin_66 Start: 42357, Stop: 42160, Start Num: 29

Candidate Starts for Caelakin_66:

(Start: 29 @42357 has 133 MA's), (39, 42300), (60, 42165),

Gene: Camperdownii_65 Start: 42031, Stop: 41834, Start Num: 29

Candidate Starts for Camperdownii_65:

(Start: 29 @42031 has 133 MA's), (39, 41974), (60, 41839),

Gene: Caraxes_75 Start: 42129, Stop: 41929, Start Num: 16

Candidate Starts for Caraxes_75:

(1, 42240), (2, 42222), (Start: 6 @42168 has 4 MA's), (Start: 16 @42129 has 31 MA's), (Start: 35 @42075 has 1 MA's), (38, 42051), (51, 41937),

Gene: Catalina_76 Start: 42925, Stop: 42707, Start Num: 16

Candidate Starts for Catalina_76:

(Start: 16 @42925 has 31 MA's), (Start: 36 @42868 has 1 MA's), (38, 42850),

Gene: Caviar_69 Start: 42560, Stop: 42348, Start Num: 26

Candidate Starts for Caviar_69:

(Start: 26 @42560 has 55 MA's), (Start: 36 @42527 has 1 MA's), (49, 42398), (60, 42353),

Gene: Centaur_73 Start: 43457, Stop: 43230, Start Num: 18

Candidate Starts for Centaur_73:

(Start: 18 @43457 has 39 MA's), (Start: 35 @43403 has 1 MA's), (51, 43265),

Gene: CentreCat_67 Start: 42396, Stop: 42172, Start Num: 29

Candidate Starts for CentreCat_67:

(Start: 29 @42396 has 133 MA's), (39, 42339), (40, 42333), (60, 42177),

Gene: Cerulean_68 Start: 42797, Stop: 42573, Start Num: 29

Candidate Starts for Cerulean_68:

(Start: 29 @42797 has 133 MA's), (39, 42740), (40, 42734), (60, 42578),

Gene: ChampagnePapi_69 Start: 42796, Stop: 42572, Start Num: 29

Candidate Starts for ChampagnePapi_69:

(Start: 29 @42796 has 133 MA's), (39, 42739), (40, 42733), (60, 42577),

Gene: Changeling_71 Start: 43693, Stop: 43472, Start Num: 20

Candidate Starts for Changeling_71:

(Start: 20 @43693 has 30 MA's), (Start: 35 @43639 has 1 MA's), (51, 43507),

Gene: Chaph_67 Start: 42368, Stop: 42171, Start Num: 29

Candidate Starts for Chaph_67:

(Start: 29 @42368 has 133 MA's), (39, 42311), (60, 42176),

Gene: Che12_76 Start: 42288, Stop: 42049, Start Num: 6

Candidate Starts for Che12_76:

(1, 42348), (Start: 6 @42288 has 4 MA's), (Start: 16 @42249 has 31 MA's), (Start: 35 @42195 has 1 MA's), (Start: 36 @42189 has 1 MA's), (37, 42180), (38, 42171), (51, 42057),

Gene: ChipMunk_73 Start: 44854, Stop: 44630, Start Num: 17

Candidate Starts for ChipMunk_73:

(Start: 17 @44854 has 8 MA's), (Start: 35 @44803 has 1 MA's), (48, 44671), (49, 44668), (51, 44665), (57, 44638),

Gene: Chupacabra_64 Start: 41694, Stop: 41500, Start Num: 31

Candidate Starts for Chupacabra_64:

(Start: 31 @41694 has 11 MA's), (44, 41598), (49, 41550),

Gene: Cici_66 Start: 42648, Stop: 42424, Start Num: 29

Candidate Starts for Cici_66:

(Start: 29 @42648 has 133 MA's), (39, 42591), (40, 42585), (44, 42534), (60, 42429),

Gene: Cindaradix_63 Start: 42259, Stop: 42035, Start Num: 29

Candidate Starts for Cindaradix_63:

(Start: 29 @42259 has 133 MA's), (39, 42202), (40, 42196), (44, 42145), (60, 42040),

Gene: Cintron_67 Start: 42507, Stop: 42283, Start Num: 29

Candidate Starts for Cintron_67:

(Start: 29 @42507 has 133 MA's), (39, 42450), (40, 42444), (60, 42288),

Gene: Citius_67 Start: 42378, Stop: 42181, Start Num: 29

Candidate Starts for Citius_67:

(Start: 29 @42378 has 133 MA's), (39, 42321), (60, 42186),

Gene: Clarenza_66 Start: 42354, Stop: 42157, Start Num: 29

Candidate Starts for Clarenza_66:

(Start: 29 @42354 has 133 MA's), (39, 42297), (60, 42162),

Gene: Cocoaberry_67 Start: 42361, Stop: 42164, Start Num: 29

Candidate Starts for Cocoaberry_67:

(Start: 29 @42361 has 133 MA's), (39, 42304), (60, 42169),

Gene: Colbster_70 Start: 42848, Stop: 42633, Start Num: 23

Candidate Starts for Colbster_70:

(Start: 23 @42848 has 37 MA's), (Start: 26 @42845 has 55 MA's), (Start: 36 @42812 has 1 MA's), (49, 42683), (60, 42638),

Gene: Colin_72 Start: 44437, Stop: 44219, Start Num: 21

Candidate Starts for Colin_72:

(Start: 21 @44437 has 3 MA's), (Start: 35 @44386 has 1 MA's), (38, 44362),

Gene: Commander_65 Start: 42356, Stop: 42159, Start Num: 29

Candidate Starts for Commander_65:

(Start: 29 @42356 has 133 MA's), (39, 42299), (60, 42164),

Gene: Connomayer_67 Start: 42357, Stop: 42160, Start Num: 29

Candidate Starts for Connomayer_67:

(Start: 29 @42357 has 133 MA's), (39, 42300), (60, 42165),

Gene: Conquerage_72 Start: 42600, Stop: 42382, Start Num: 16

Candidate Starts for Conquerage_72:

(Start: 16 @42600 has 31 MA's), (Start: 36 @42543 has 1 MA's), (38, 42525),

Gene: Crucio_73 Start: 43811, Stop: 43587, Start Num: 18

Candidate Starts for Crucio_73:

(Start: 18 @43811 has 39 MA's), (48, 43628), (49, 43625), (51, 43622),

Gene: Cullens_74 Start: 42844, Stop: 42629, Start Num: 23

Candidate Starts for Cullens_74:

(Start: 23 @42844 has 37 MA's), (Start: 26 @42841 has 55 MA's), (Start: 36 @42808 has 1 MA's), (49, 42679), (60, 42634),

Gene: D29_68.1 Start: 44004, Stop: 43762, Start Num: 22

Candidate Starts for D29_68.1:

(Start: 22 @44004 has 17 MA's), (Start: 35 @43950 has 1 MA's), (38, 43926),

Gene: D32_74 Start: 44004, Stop: 43762, Start Num: 22

Candidate Starts for D32_74:

(Start: 22 @44004 has 17 MA's), (Start: 35 @43950 has 1 MA's), (38, 43926),

Gene: DBQu4n_75 Start: 43984, Stop: 43742, Start Num: 22

Candidate Starts for DBQu4n_75:

(Start: 22 @43984 has 17 MA's), (Start: 35 @43930 has 1 MA's), (38, 43906),

Gene: DaHudson_73 Start: 42837, Stop: 42622, Start Num: 23

Candidate Starts for DaHudson_73:

(Start: 23 @42837 has 37 MA's), (Start: 26 @42834 has 55 MA's), (Start: 36 @42801 has 1 MA's), (49, 42672), (60, 42627),

Gene: Daishi_73 Start: 41709, Stop: 41497, Start Num: 26

Candidate Starts for Daishi_73:

(Start: 23 @41712 has 37 MA's), (Start: 26 @41709 has 55 MA's), (28, 41703), (Start: 36 @41676 has 1 MA's), (49, 41547), (60, 41502),

Gene: Dalmatian_73 Start: 43630, Stop: 43406, Start Num: 18

Candidate Starts for Dalmatian_73:

(Start: 18 @43630 has 39 MA's), (48, 43447), (49, 43444), (51, 43441),

Gene: DarthPhader_70 Start: 44013, Stop: 43786, Start Num: 17

Candidate Starts for DarthPhader_70:

(Start: 17 @44013 has 8 MA's), (Start: 35 @43959 has 1 MA's), (37, 43944), (49, 43824), (51, 43821),

Gene: Datway_66 Start: 42619, Stop: 42395, Start Num: 29

Candidate Starts for Datway_66:

(Start: 29 @42619 has 133 MA's), (39, 42562), (40, 42556), (44, 42505), (60, 42400),

Gene: Deano_64 Start: 42365, Stop: 42168, Start Num: 29

Candidate Starts for Deano_64:
(Start: 29 @42365 has 133 MA's), (39, 42308), (60, 42173),

Gene: Deloris_72 Start: 43163, Stop: 42966, Start Num: 19
Candidate Starts for Deloris_72:
(Start: 19 @43163 has 13 MA's), (Start: 35 @43112 has 1 MA's), (Start: 36 @43106 has 1 MA's), (38, 43088),

Gene: Dhanush_67 Start: 42360, Stop: 42163, Start Num: 29
Candidate Starts for Dhanush_67:
(Start: 29 @42360 has 133 MA's), (39, 42303), (60, 42168),

Gene: Dieselweasel_74 Start: 42843, Stop: 42631, Start Num: 26
Candidate Starts for Dieselweasel_74:
(Start: 23 @42846 has 37 MA's), (Start: 26 @42843 has 55 MA's), (Start: 36 @42810 has 1 MA's), (49, 42681), (60, 42636),

Gene: Dignity_74 Start: 43852, Stop: 43628, Start Num: 18
Candidate Starts for Dignity_74:
(Start: 18 @43852 has 39 MA's), (Start: 35 @43801 has 1 MA's), (48, 43669), (49, 43666), (51, 43663),

Gene: DirtyDunning_66 Start: 42372, Stop: 42175, Start Num: 29
Candidate Starts for DirtyDunning_66:
(Start: 29 @42372 has 133 MA's), (39, 42315), (60, 42180),

Gene: Drake55_74 Start: 43531, Stop: 43331, Start Num: 18
Candidate Starts for Drake55_74:
(Start: 18 @43531 has 39 MA's), (Start: 35 @43477 has 1 MA's), (Start: 36 @43471 has 1 MA's), (38, 43453), (51, 43339),

Gene: Drake94_64 Start: 40814, Stop: 40575, Start Num: 19
Candidate Starts for Drake94_64:
(Start: 19 @40814 has 13 MA's), (Start: 36 @40754 has 1 MA's), (60, 40580),

Gene: Druantia_66 Start: 42360, Stop: 42163, Start Num: 29
Candidate Starts for Druantia_66:
(Start: 29 @42360 has 133 MA's), (39, 42303), (60, 42168),

Gene: Dublin_66 Start: 42050, Stop: 41748, Start Num: 31
Candidate Starts for Dublin_66:
(Start: 31 @42050 has 11 MA's), (39, 41996), (40, 41990), (50, 41879), (52, 41873), (61, 41831),

Gene: DudeLittle_71 Start: 43396, Stop: 43172, Start Num: 18
Candidate Starts for DudeLittle_71:
(Start: 18 @43396 has 39 MA's), (48, 43213), (49, 43210), (51, 43207),

Gene: Duplo_75 Start: 44041, Stop: 43799, Start Num: 22
Candidate Starts for Duplo_75:
(Start: 22 @44041 has 17 MA's), (Start: 35 @43987 has 1 MA's), (38, 43963),

Gene: EZMoney23_69 Start: 43235, Stop: 43014, Start Num: 20
Candidate Starts for EZMoney23_69:

(Start: 8 @43271 has 1 MA's), (Start: 20 @43235 has 30 MA's), (Start: 35 @43181 has 1 MA's), (38, 43157), (53, 43031),

Gene: Eagle_66 Start: 42418, Stop: 42194, Start Num: 29
Candidate Starts for Eagle_66:
(Start: 29 @42418 has 133 MA's), (39, 42361), (40, 42355), (60, 42199),

Gene: EagleEye_77 Start: 43527, Stop: 43327, Start Num: 18
Candidate Starts for EagleEye_77:
(11, 43551), (14, 43533), (Start: 18 @43527 has 39 MA's), (46, 43368),

Gene: Eaglepride_68 Start: 41798, Stop: 41607, Start Num: 31
Candidate Starts for Eaglepride_68:
(Start: 31 @41798 has 11 MA's), (49, 41657),

Gene: Eapen_67 Start: 42352, Stop: 42155, Start Num: 29
Candidate Starts for Eapen_67:
(Start: 29 @42352 has 133 MA's), (39, 42295), (60, 42160),

Gene: Ebony_75 Start: 43086, Stop: 42859, Start Num: 15
Candidate Starts for Ebony_75:
(Start: 15 @43086 has 23 MA's), (Start: 36 @43026 has 1 MA's), (44, 42954),

Gene: Echild_73 Start: 43175, Stop: 42951, Start Num: 16
Candidate Starts for Echild_73:
(Start: 16 @43175 has 31 MA's), (Start: 35 @43124 has 1 MA's), (48, 42992), (49, 42989), (51, 42986),

Gene: Edison31_61 Start: 41608, Stop: 41375, Start Num: 23
Candidate Starts for Edison31_61:
(Start: 23 @41608 has 37 MA's), (Start: 35 @41560 has 1 MA's), (Start: 36 @41554 has 1 MA's), (60, 41380),

Gene: Eidsmoe_72 Start: 42592, Stop: 42374, Start Num: 16
Candidate Starts for Eidsmoe_72:
(Start: 16 @42592 has 31 MA's), (Start: 36 @42535 has 1 MA's), (38, 42517),

Gene: EmyBug_68 Start: 42594, Stop: 42376, Start Num: 16
Candidate Starts for EmyBug_68:
(Start: 16 @42594 has 31 MA's), (Start: 36 @42537 has 1 MA's), (38, 42519),

Gene: EpicPhail_75 Start: 42845, Stop: 42633, Start Num: 26
Candidate Starts for EpicPhail_75:
(Start: 23 @42848 has 37 MA's), (Start: 26 @42845 has 55 MA's), (Start: 36 @42812 has 1 MA's), (49, 42683), (60, 42638),

Gene: Equemioh13_72 Start: 43362, Stop: 43135, Start Num: 18
Candidate Starts for Equemioh13_72:
(Start: 18 @43362 has 39 MA's), (Start: 35 @43308 has 1 MA's), (51, 43170),

Gene: Eris_66 Start: 42372, Stop: 42175, Start Num: 29
Candidate Starts for Eris_66:
(Start: 29 @42372 has 133 MA's), (39, 42315), (60, 42180),

Gene: Eros_67 Start: 42359, Stop: 42162, Start Num: 29
Candidate Starts for Eros_67:
(Start: 29 @42359 has 133 MA's), (39, 42302), (60, 42167),

Gene: Et2Brutus_74 Start: 43049, Stop: 42822, Start Num: 15
Candidate Starts for Et2Brutus_74:
(Start: 15 @43049 has 23 MA's), (Start: 35 @42995 has 1 MA's), (Start: 36 @42989 has 1 MA's), (44, 42917),

Gene: Eurydice_68 Start: 42393, Stop: 42169, Start Num: 29
Candidate Starts for Eurydice_68:
(Start: 29 @42393 has 133 MA's), (39, 42336), (40, 42330), (60, 42174),

Gene: EvilGenius_72 Start: 44855, Stop: 44631, Start Num: 17
Candidate Starts for EvilGenius_72:
(Start: 17 @44855 has 8 MA's), (Start: 35 @44804 has 1 MA's), (48, 44672), (49, 44669), (51, 44666), (57, 44639),

Gene: ExplosioNervosa_72 Start: 42660, Stop: 42442, Start Num: 16
Candidate Starts for ExplosioNervosa_72:
(Start: 16 @42660 has 31 MA's), (Start: 36 @42603 has 1 MA's), (38, 42585),

Gene: Fameo_71 Start: 43438, Stop: 43214, Start Num: 18
Candidate Starts for Fameo_71:
(Start: 18 @43438 has 39 MA's), (Start: 35 @43387 has 1 MA's), (48, 43255), (51, 43249), (57, 43222),

Gene: Farber_74 Start: 42834, Stop: 42619, Start Num: 23
Candidate Starts for Farber_74:
(Start: 23 @42834 has 37 MA's), (Start: 26 @42831 has 55 MA's), (Start: 36 @42798 has 1 MA's), (49, 42669), (60, 42624),

Gene: Fayely_72 Start: 42561, Stop: 42343, Start Num: 16
Candidate Starts for Fayely_72:
(Start: 16 @42561 has 31 MA's), (Start: 36 @42504 has 1 MA's),

Gene: Fernando_74 Start: 42841, Stop: 42629, Start Num: 26
Candidate Starts for Fernando_74:
(Start: 23 @42844 has 37 MA's), (Start: 26 @42841 has 55 MA's), (Start: 36 @42808 has 1 MA's), (49, 42679), (60, 42634),

Gene: Fibonacci_74 Start: 43055, Stop: 42828, Start Num: 15
Candidate Starts for Fibonacci_74:
(Start: 15 @43055 has 23 MA's), (Start: 35 @43001 has 1 MA's), (Start: 36 @42995 has 1 MA's), (44, 42923),

Gene: FiringLine_73 Start: 43793, Stop: 43569, Start Num: 18
Candidate Starts for FiringLine_73:
(Start: 18 @43793 has 39 MA's), (48, 43610), (49, 43607), (51, 43604),

Gene: First_0073 Start: 43417, Stop: 43193, Start Num: 20
Candidate Starts for First_0073:

(Start: 20 @43417 has 30 MA's), (Start: 35 @43366 has 1 MA's), (49, 43231), (51, 43228), (57, 43201),

Gene: Flare16_73 Start: 43501, Stop: 43274, Start Num: 18

Candidate Starts for Flare16_73:

(Start: 18 @43501 has 39 MA's), (Start: 35 @43447 has 1 MA's), (51, 43309),

Gene: Flaverint_76 Start: 43513, Stop: 43286, Start Num: 15

Candidate Starts for Flaverint_76:

(Start: 15 @43513 has 23 MA's), (Start: 35 @43459 has 1 MA's), (Start: 36 @43453 has 1 MA's), (44, 43381),

Gene: Florean_67 Start: 42356, Stop: 42159, Start Num: 29

Candidate Starts for Florean_67:

(Start: 29 @42356 has 133 MA's), (39, 42299), (60, 42164),

Gene: Flux_67 Start: 42356, Stop: 42159, Start Num: 29

Candidate Starts for Flux_67:

(Start: 29 @42356 has 133 MA's), (39, 42299), (60, 42164),

Gene: Fred313_67 Start: 42209, Stop: 41985, Start Num: 26

Candidate Starts for Fred313_67:

(Start: 26 @42209 has 55 MA's), (28, 42203), (Start: 36 @42167 has 1 MA's), (49, 42035), (60, 41990),

Gene: Funston_66 Start: 42357, Stop: 42160, Start Num: 29

Candidate Starts for Funston_66:

(Start: 29 @42357 has 133 MA's), (39, 42300), (60, 42165),

Gene: Gadost_67 Start: 42361, Stop: 42164, Start Num: 29

Candidate Starts for Gadost_67:

(Start: 29 @42361 has 133 MA's), (39, 42304), (60, 42169),

Gene: Gail_74 Start: 43840, Stop: 43619, Start Num: 16

Candidate Starts for Gail_74:

(Start: 16 @43840 has 31 MA's), (Start: 35 @43786 has 1 MA's), (Start: 36 @43780 has 1 MA's), (38, 43762), (51, 43654),

Gene: GaugeLDP_68 Start: 43061, Stop: 42840, Start Num: 21

Candidate Starts for GaugeLDP_68:

(Start: 21 @43061 has 3 MA's), (Start: 35 @43007 has 1 MA's), (38, 42983),

Gene: Gemma_71 Start: 42660, Stop: 42442, Start Num: 20

Candidate Starts for Gemma_71:

(4, 42729), (Start: 20 @42660 has 30 MA's), (Start: 36 @42621 has 1 MA's), (42, 42585), (49, 42492), (60, 42447),

Gene: Georgie2_74 Start: 43838, Stop: 43614, Start Num: 18

Candidate Starts for Georgie2_74:

(Start: 18 @43838 has 39 MA's), (48, 43655), (49, 43652), (51, 43649),

Gene: Gilberta_72 Start: 42389, Stop: 42126, Start Num: 15

Candidate Starts for Gilberta_72:

(Start: 15 @42389 has 23 MA's), (Start: 35 @42335 has 1 MA's), (Start: 36 @42329 has 1 MA's), (44, 42257), (56, 42170),

Gene: GingkoMaracino_74 Start: 42730, Stop: 42515, Start Num: 23

Candidate Starts for GingkoMaracino_74:

(Start: 23 @42730 has 37 MA's), (Start: 26 @42727 has 55 MA's), (Start: 36 @42694 has 1 MA's), (49, 42565), (60, 42520),

Gene: Giroux_68 Start: 42594, Stop: 42391, Start Num: 32

Candidate Starts for Giroux_68:

(Start: 32 @42594 has 5 MA's), (38, 42552), (49, 42441),

Gene: Goose_67 Start: 41510, Stop: 41316, Start Num: 31

Candidate Starts for Goose_67:

(Start: 31 @41510 has 11 MA's), (44, 41414), (49, 41366),

Gene: Grif_72 Start: 42915, Stop: 42703, Start Num: 26

Candidate Starts for Grif_72:

(Start: 23 @42918 has 37 MA's), (Start: 26 @42915 has 55 MA's), (Start: 36 @42882 has 1 MA's), (49, 42753), (60, 42708),

Gene: Groupthink_74 Start: 42664, Stop: 42446, Start Num: 20

Candidate Starts for Groupthink_74:

(4, 42733), (Start: 20 @42664 has 30 MA's), (Start: 36 @42625 has 1 MA's), (42, 42589), (49, 42496), (60, 42451),

Gene: Grub_72 Start: 42833, Stop: 42621, Start Num: 26

Candidate Starts for Grub_72:

(Start: 23 @42836 has 37 MA's), (Start: 26 @42833 has 55 MA's), (Start: 36 @42800 has 1 MA's), (49, 42671), (60, 42626),

Gene: Grum1_73 Start: 42844, Stop: 42629, Start Num: 23

Candidate Starts for Grum1_73:

(Start: 23 @42844 has 37 MA's), (Start: 26 @42841 has 55 MA's), (Start: 36 @42808 has 1 MA's), (49, 42679), (60, 42634),

Gene: GtownJaz_74 Start: 42842, Stop: 42630, Start Num: 26

Candidate Starts for GtownJaz_74:

(Start: 23 @42845 has 37 MA's), (Start: 26 @42842 has 55 MA's), (Start: 36 @42809 has 1 MA's), (49, 42680), (60, 42635),

Gene: HamSlice_63 Start: 42355, Stop: 42158, Start Num: 29

Candidate Starts for HamSlice_63:

(Start: 29 @42355 has 133 MA's), (39, 42298), (60, 42163),

Gene: Happiness_66 Start: 42379, Stop: 42155, Start Num: 29

Candidate Starts for Happiness_66:

(Start: 29 @42379 has 133 MA's), (39, 42322), (40, 42316), (60, 42160),

Gene: HarryHoudini_73 Start: 43532, Stop: 43332, Start Num: 18

Candidate Starts for HarryHoudini_73:

(Start: 18 @43532 has 39 MA's), (Start: 35 @43478 has 1 MA's), (38, 43454), (51, 43340),

Gene: HashRod_75 Start: 42869, Stop: 42657, Start Num: 26
Candidate Starts for HashRod_75:
(Start: 23 @42872 has 37 MA's), (Start: 26 @42869 has 55 MA's), (Start: 36 @42836 has 1 MA's),
(49, 42707), (60, 42662),

Gene: HaveUMetTed_74 Start: 42649, Stop: 42431, Start Num: 20
Candidate Starts for HaveUMetTed_74:
(4, 42718), (Start: 20 @42649 has 30 MA's), (Start: 36 @42610 has 1 MA's), (42, 42574), (49, 42481),
(60, 42436),

Gene: Heathen_69 Start: 42304, Stop: 42080, Start Num: 26
Candidate Starts for Heathen_69:
(Start: 26 @42304 has 55 MA's), (28, 42298), (Start: 36 @42262 has 1 MA's), (49, 42130), (60,
42085),

Gene: Heffalump_70 Start: 43906, Stop: 43682, Start Num: 18
Candidate Starts for Heffalump_70:
(Start: 18 @43906 has 39 MA's), (Start: 35 @43855 has 1 MA's), (48, 43723), (51, 43717), (57,
43690), (58, 43687),

Gene: HelDan_69 Start: 42520, Stop: 42296, Start Num: 26
Candidate Starts for HelDan_69:
(Start: 26 @42520 has 55 MA's), (28, 42514), (Start: 36 @42478 has 1 MA's), (49, 42346), (60,
42301),

Gene: Heliosoles_71 Start: 42667, Stop: 42449, Start Num: 20
Candidate Starts for Heliosoles_71:
(4, 42736), (Start: 20 @42667 has 30 MA's), (Start: 36 @42628 has 1 MA's), (42, 42592), (49, 42499),
(60, 42454),

Gene: Hercules11_74 Start: 42853, Stop: 42638, Start Num: 23
Candidate Starts for Hercules11_74:
(Start: 23 @42853 has 37 MA's), (Start: 26 @42850 has 55 MA's), (Start: 36 @42817 has 1 MA's),
(49, 42688), (60, 42643),

Gene: Holli_66 Start: 42147, Stop: 41950, Start Num: 29
Candidate Starts for Holli_66:
(Start: 29 @42147 has 133 MA's), (39, 42090), (60, 41955),

Gene: Hookmount_69 Start: 42561, Stop: 42349, Start Num: 26
Candidate Starts for Hookmount_69:
(Start: 26 @42561 has 55 MA's), (Start: 36 @42528 has 1 MA's), (49, 42399), (60, 42354),

Gene: HortumSL17_75 Start: 42923, Stop: 42705, Start Num: 16
Candidate Starts for HortumSL17_75:
(Start: 16 @42923 has 31 MA's), (Start: 36 @42866 has 1 MA's), (38, 42848),

Gene: Houdini22_66 Start: 42361, Stop: 42164, Start Num: 29
Candidate Starts for Houdini22_66:
(Start: 29 @42361 has 133 MA's), (39, 42304), (60, 42169),

Gene: HuhtaEnerson15_64 Start: 41746, Stop: 41444, Start Num: 31
Candidate Starts for HuhtaEnerson15_64:

(Start: 31 @41746 has 11 MA's), (39, 41692), (40, 41686), (50, 41575), (52, 41569), (61, 41527),

Gene: Hutc2_70 Start: 41938, Stop: 41675, Start Num: 15

Candidate Starts for Hutc2_70:

(Start: 15 @41938 has 23 MA's), (Start: 35 @41884 has 1 MA's), (Start: 36 @41878 has 1 MA's), (44, 41806), (56, 41719),

Gene: ICleared_66 Start: 42425, Stop: 42201, Start Num: 29

Candidate Starts for ICleared_66:

(Start: 29 @42425 has 133 MA's), (39, 42368), (40, 42362), (60, 42206),

Gene: Iceman_66 Start: 42646, Stop: 42449, Start Num: 29

Candidate Starts for Iceman_66:

(Start: 29 @42646 has 133 MA's), (39, 42589), (60, 42454),

Gene: Idleandcovert_70 Start: 42595, Stop: 42392, Start Num: 32

Candidate Starts for Idleandcovert_70:

(Start: 32 @42595 has 5 MA's), (38, 42553), (49, 42442),

Gene: Insomnia_72 Start: 43230, Stop: 43003, Start Num: 15

Candidate Starts for Insomnia_72:

(Start: 15 @43230 has 23 MA's), (Start: 35 @43176 has 1 MA's), (Start: 36 @43170 has 1 MA's), (44, 43098),

Gene: Iracema64_67 Start: 42624, Stop: 42427, Start Num: 29

Candidate Starts for Iracema64_67:

(Start: 29 @42624 has 133 MA's), (39, 42567), (60, 42432),

Gene: IronMan_70 Start: 44663, Stop: 44424, Start Num: 22

Candidate Starts for IronMan_70:

(Start: 22 @44663 has 17 MA's), (Start: 36 @44600 has 1 MA's), (38, 44582), (49, 44477),

Gene: Isca_67 Start: 42069, Stop: 41845, Start Num: 26

Candidate Starts for Isca_67:

(Start: 26 @42069 has 55 MA's), (28, 42063), (Start: 36 @42027 has 1 MA's), (60, 41850),

Gene: Iwokeuplikedis_74 Start: 43821, Stop: 43639, Start Num: 35

Candidate Starts for Iwokeuplikedis_74:

(Start: 35 @43821 has 1 MA's), (Start: 36 @43815 has 1 MA's), (38, 43797), (48, 43695), (59, 43647),

Gene: JF2_67 Start: 40764, Stop: 40540, Start Num: 26

Candidate Starts for JF2_67:

(Start: 26 @40764 has 55 MA's), (28, 40758), (Start: 36 @40722 has 1 MA's), (60, 40545),

Gene: JF4_67 Start: 40764, Stop: 40540, Start Num: 26

Candidate Starts for JF4_67:

(Start: 26 @40764 has 55 MA's), (28, 40758), (Start: 36 @40722 has 1 MA's), (60, 40545),

Gene: JHC117_70 Start: 42842, Stop: 42627, Start Num: 23

Candidate Starts for JHC117_70:

(Start: 23 @42842 has 37 MA's), (Start: 26 @42839 has 55 MA's), (Start: 36 @42806 has 1 MA's), (49, 42677), (60, 42632),

Gene: Jaan_71 Start: 44833, Stop: 44594, Start Num: 22
Candidate Starts for Jaan_71:
(Start: 22 @44833 has 17 MA's), (Start: 36 @44770 has 1 MA's), (38, 44752), (49, 44647),

Gene: Jabith_74 Start: 43247, Stop: 43020, Start Num: 15
Candidate Starts for Jabith_74:
(Start: 15 @43247 has 23 MA's), (Start: 35 @43193 has 1 MA's), (Start: 36 @43187 has 1 MA's), (44, 43115),

Gene: Jaykayelowell_64 Start: 42350, Stop: 42153, Start Num: 29
Candidate Starts for Jaykayelowell_64:
(Start: 29 @42350 has 133 MA's), (39, 42293), (60, 42158),

Gene: Jeeves_76 Start: 42825, Stop: 42604, Start Num: 16
Candidate Starts for Jeeves_76:
(Start: 16 @42825 has 31 MA's), (Start: 35 @42771 has 1 MA's), (Start: 36 @42765 has 1 MA's), (38, 42747), (51, 42639),

Gene: JenCasNa_75 Start: 42844, Stop: 42629, Start Num: 23
Candidate Starts for JenCasNa_75:
(Start: 23 @42844 has 37 MA's), (Start: 26 @42841 has 55 MA's), (Start: 36 @42808 has 1 MA's), (49, 42679), (60, 42634),

Gene: JeppNRM_74 Start: 42665, Stop: 42447, Start Num: 20
Candidate Starts for JeppNRM_74:
(4, 42734), (Start: 20 @42665 has 30 MA's), (Start: 36 @42626 has 1 MA's), (42, 42590), (44, 42557), (49, 42497), (60, 42452),

Gene: Jerm_74 Start: 43834, Stop: 43610, Start Num: 18
Candidate Starts for Jerm_74:
(Start: 18 @43834 has 39 MA's), (Start: 35 @43783 has 1 MA's), (48, 43651), (49, 43648), (51, 43645),

Gene: JetBlade_67 Start: 42387, Stop: 42163, Start Num: 29
Candidate Starts for JetBlade_67:
(Start: 29 @42387 has 133 MA's), (39, 42330), (40, 42324), (60, 42168),

Gene: Jobu08_70 Start: 42676, Stop: 42461, Start Num: 23
Candidate Starts for Jobu08_70:
(Start: 23 @42676 has 37 MA's), (Start: 26 @42673 has 55 MA's), (Start: 36 @42640 has 1 MA's), (49, 42511), (60, 42466),

Gene: JoongJeon_66 Start: 42354, Stop: 42157, Start Num: 29
Candidate Starts for JoongJeon_66:
(Start: 29 @42354 has 133 MA's), (39, 42297), (60, 42162),

Gene: Joselito_74 Start: 43267, Stop: 43040, Start Num: 15
Candidate Starts for Joselito_74:
(Start: 15 @43267 has 23 MA's), (Start: 35 @43213 has 1 MA's), (Start: 36 @43207 has 1 MA's), (44, 43135),

Gene: JoshKayV_73 Start: 43858, Stop: 43661, Start Num: 18
Candidate Starts for JoshKayV_73:

(Start: 18 @43858 has 39 MA's), (38, 43783),

Gene: Jsquared_76 Start: 43035, Stop: 42751, Start Num: 9

Candidate Starts for Jsquared_76:

(Start: 9 @43035 has 4 MA's), (Start: 35 @42942 has 1 MA's), (Start: 36 @42936 has 1 MA's), (37, 42927), (47, 42828), (49, 42804),

Gene: KADY_71 Start: 42869, Stop: 42657, Start Num: 26

Candidate Starts for KADY_71:

(Start: 23 @42872 has 37 MA's), (Start: 26 @42869 has 55 MA's), (Start: 36 @42836 has 1 MA's), (60, 42662),

Gene: KFPoly_66 Start: 42351, Stop: 42154, Start Num: 29

Candidate Starts for KFPoly_66:

(Start: 29 @42351 has 133 MA's), (39, 42294), (60, 42159),

Gene: Kalb97_74 Start: 42663, Stop: 42445, Start Num: 20

Candidate Starts for Kalb97_74:

(4, 42732), (Start: 20 @42663 has 30 MA's), (Start: 36 @42624 has 1 MA's), (42, 42588), (49, 42495), (60, 42450),

Gene: Kalnoky_74 Start: 42661, Stop: 42443, Start Num: 20

Candidate Starts for Kalnoky_74:

(4, 42730), (Start: 20 @42661 has 30 MA's), (Start: 36 @42622 has 1 MA's), (42, 42586), (44, 42553), (49, 42493), (60, 42448),

Gene: Kalpine_72 Start: 43855, Stop: 43637, Start Num: 21

Candidate Starts for Kalpine_72:

(Start: 21 @43855 has 3 MA's), (Start: 35 @43804 has 1 MA's), (38, 43780), (57, 43645),

Gene: Kamy_66 Start: 42359, Stop: 42162, Start Num: 29

Candidate Starts for Kamy_66:

(Start: 29 @42359 has 133 MA's), (39, 42302), (60, 42167),

Gene: Katalie136_66 Start: 42633, Stop: 42409, Start Num: 29

Candidate Starts for Katalie136_66:

(Start: 29 @42633 has 133 MA's), (39, 42576), (40, 42570), (44, 42519), (60, 42414),

Gene: Kerberos_75 Start: 44003, Stop: 43761, Start Num: 22

Candidate Starts for Kerberos_75:

(Start: 22 @44003 has 17 MA's), (Start: 35 @43949 has 1 MA's), (38, 43925),

Gene: Keziacharles14_71 Start: 43500, Stop: 43279, Start Num: 16

Candidate Starts for Keziacharles14_71:

(Start: 16 @43500 has 31 MA's), (Start: 36 @43440 has 1 MA's), (38, 43422),

Gene: Kimona_66 Start: 41475, Stop: 41236, Start Num: 15

Candidate Starts for Kimona_66:

(Start: 15 @41475 has 23 MA's), (Start: 26 @41457 has 55 MA's), (Start: 35 @41424 has 1 MA's), (Start: 36 @41418 has 1 MA's),

Gene: KingCyrus_72 Start: 44850, Stop: 44626, Start Num: 17

Candidate Starts for KingCyrus_72:

(Start: 17 @44850 has 8 MA's), (Start: 35 @44799 has 1 MA's), (48, 44667), (49, 44664), (51, 44661), (57, 44634),

Gene: Kingmustik0402_67 Start: 42346, Stop: 42149, Start Num: 29

Candidate Starts for Kingmustik0402_67:

(Start: 29 @42346 has 133 MA's), (39, 42289), (60, 42154),

Gene: KittenMittens_63 Start: 40822, Stop: 40583, Start Num: 19

Candidate Starts for KittenMittens_63:

(Start: 19 @40822 has 13 MA's), (Start: 36 @40762 has 1 MA's), (60, 40588),

Gene: Koduck_74 Start: 42710, Stop: 42504, Start Num: 36

Candidate Starts for Koduck_74:

(Start: 9 @42809 has 4 MA's), (Start: 35 @42716 has 1 MA's), (Start: 36 @42710 has 1 MA's), (47, 42602), (49, 42578), (59, 42533),

Gene: Koreni_66 Start: 42038, Stop: 41841, Start Num: 29

Candidate Starts for Koreni_66:

(Start: 29 @42038 has 133 MA's), (39, 41981), (60, 41846),

Gene: Kratak_66 Start: 42394, Stop: 42170, Start Num: 29

Candidate Starts for Kratak_66:

(Start: 29 @42394 has 133 MA's), (39, 42337), (40, 42331), (60, 42175),

Gene: Kremtemulon_63 Start: 42490, Stop: 42266, Start Num: 29

Candidate Starts for Kremtemulon_63:

(Start: 29 @42490 has 133 MA's), (39, 42433), (40, 42427), (60, 42271),

Gene: Kristoff_65 Start: 42136, Stop: 41897, Start Num: 19

Candidate Starts for Kristoff_65:

(Start: 19 @42136 has 13 MA's), (Start: 36 @42076 has 1 MA's), (49, 41947), (60, 41902),

Gene: Kyee_67 Start: 42355, Stop: 42158, Start Num: 29

Candidate Starts for Kyee_67:

(Start: 29 @42355 has 133 MA's), (39, 42298), (60, 42163),

Gene: L5_68.1 Start: 42962, Stop: 42657, Start Num: 9

Candidate Starts for L5_68.1:

(Start: 9 @42962 has 4 MA's), (Start: 35 @42869 has 1 MA's), (Start: 36 @42863 has 1 MA's), (47, 42755), (49, 42731), (59, 42686),

Gene: LBerry_75 Start: 42848, Stop: 42633, Start Num: 23

Candidate Starts for LBerry_75:

(Start: 23 @42848 has 37 MA's), (Start: 26 @42845 has 55 MA's), (Start: 36 @42812 has 1 MA's), (49, 42683), (60, 42638),

Gene: LHTSCC_69 Start: 42796, Stop: 42572, Start Num: 29

Candidate Starts for LHTSCC_69:

(Start: 29 @42796 has 133 MA's), (39, 42739), (40, 42733), (60, 42577),

Gene: LadyBird_76 Start: 44079, Stop: 43882, Start Num: 19

Candidate Starts for LadyBird_76:

(Start: 19 @44079 has 13 MA's), (Start: 35 @44028 has 1 MA's), (38, 44004),

Gene: Lambert1_69 Start: 42560, Stop: 42348, Start Num: 26

Candidate Starts for Lambert1_69:

(Start: 26 @42560 has 55 MA's), (Start: 36 @42527 has 1 MA's), (49, 42398), (60, 42353),

Gene: Landor_71 Start: 44756, Stop: 44517, Start Num: 22

Candidate Starts for Landor_71:

(Start: 22 @44756 has 17 MA's), (Start: 36 @44693 has 1 MA's), (38, 44675), (49, 44570),

Gene: LappelDuVide_63 Start: 42356, Stop: 42159, Start Num: 29

Candidate Starts for LappelDuVide_63:

(Start: 29 @42356 has 133 MA's), (39, 42299), (60, 42164),

Gene: Larenn_69 Start: 43196, Stop: 42972, Start Num: 20

Candidate Starts for Larenn_69:

(Start: 20 @43196 has 30 MA's), (Start: 35 @43145 has 1 MA's), (Start: 36 @43139 has 1 MA's), (48, 43013), (49, 43010), (51, 43007), (57, 42980),

Gene: LarryKay_74 Start: 42870, Stop: 42658, Start Num: 26

Candidate Starts for LarryKay_74:

(Start: 23 @42873 has 37 MA's), (Start: 26 @42870 has 55 MA's), (Start: 36 @42837 has 1 MA's), (49, 42708), (60, 42663),

Gene: Lemur_67 Start: 42354, Stop: 42157, Start Num: 29

Candidate Starts for Lemur_67:

(Start: 29 @42354 has 133 MA's), (60, 42162),

Gene: LeoAvram_66 Start: 42387, Stop: 42163, Start Num: 29

Candidate Starts for LeoAvram_66:

(Start: 29 @42387 has 133 MA's), (39, 42330), (40, 42324), (60, 42168),

Gene: Leogania_71 Start: 43883, Stop: 43659, Start Num: 20

Candidate Starts for Leogania_71:

(Start: 20 @43883 has 30 MA's), (Start: 35 @43832 has 1 MA's), (49, 43697), (51, 43694), (57, 43667),

Gene: Leviathan_74 Start: 43901, Stop: 43677, Start Num: 18

Candidate Starts for Leviathan_74:

(Start: 18 @43901 has 39 MA's), (Start: 35 @43850 has 1 MA's), (48, 43718), (49, 43715), (51, 43712),

Gene: LilTurb_73 Start: 43715, Stop: 43491, Start Num: 18

Candidate Starts for LilTurb_73:

(Start: 18 @43715 has 39 MA's), (Start: 35 @43664 has 1 MA's), (48, 43532), (49, 43529), (51, 43526),

Gene: Lilith_72 Start: 42834, Stop: 42622, Start Num: 26

Candidate Starts for Lilith_72:

(Start: 23 @42837 has 37 MA's), (Start: 26 @42834 has 55 MA's), (Start: 36 @42801 has 1 MA's), (49, 42672), (60, 42627),

Gene: LittleB_67 Start: 42358, Stop: 42161, Start Num: 29

Candidate Starts for LittleB_67:

(Start: 29 @42358 has 133 MA's), (39, 42301), (60, 42166),

Gene: LittleCherry_65 Start: 41616, Stop: 41314, Start Num: 31

Candidate Starts for LittleCherry_65:

(Start: 31 @41616 has 11 MA's), (39, 41562), (40, 41556), (50, 41445), (52, 41439), (61, 41397),

Gene: LittleGuy_67 Start: 42253, Stop: 42056, Start Num: 29

Candidate Starts for LittleGuy_67:

(Start: 29 @42253 has 133 MA's), (39, 42196), (60, 42061),

Gene: LochMonster_68 Start: 42596, Stop: 42399, Start Num: 29

Candidate Starts for LochMonster_68:

(Start: 29 @42596 has 133 MA's), (39, 42539), (60, 42404),

Gene: Lokk_66 Start: 42000, Stop: 41782, Start Num: 20

Candidate Starts for Lokk_66:

(Start: 20 @42000 has 30 MA's), (38, 41925), (49, 41820), (51, 41817),

Gene: LoneWolf_75 Start: 43122, Stop: 42901, Start Num: 18

Candidate Starts for LoneWolf_75:

(Start: 18 @43122 has 39 MA's), (Start: 36 @43062 has 1 MA's), (38, 43044),

Gene: Lorenzo_67 Start: 42357, Stop: 42160, Start Num: 29

Candidate Starts for Lorenzo_67:

(Start: 29 @42357 has 133 MA's), (39, 42300), (60, 42165),

Gene: Loser_74 Start: 43958, Stop: 43734, Start Num: 20

Candidate Starts for Loser_74:

(Start: 20 @43958 has 30 MA's), (Start: 35 @43907 has 1 MA's), (49, 43772), (51, 43769),

Gene: Louie6_73 Start: 42874, Stop: 42659, Start Num: 23

Candidate Starts for Louie6_73:

(Start: 23 @42874 has 37 MA's), (Start: 26 @42871 has 55 MA's), (Start: 36 @42838 has 1 MA's), (60, 42664),

Gene: Luchador_75 Start: 44307, Stop: 44086, Start Num: 16

Candidate Starts for Luchador_75:

(Start: 16 @44307 has 31 MA's), (Start: 35 @44253 has 1 MA's), (Start: 36 @44247 has 1 MA's), (38, 44229), (51, 44121),

Gene: Lucivia_76 Start: 43546, Stop: 43319, Start Num: 15

Candidate Starts for Lucivia_76:

(Start: 15 @43546 has 23 MA's), (Start: 35 @43492 has 1 MA's), (Start: 36 @43486 has 1 MA's), (44, 43414),

Gene: Lucyedi_76 Start: 43723, Stop: 43523, Start Num: 18

Candidate Starts for Lucyedi_76:

(11, 43747), (14, 43729), (Start: 18 @43723 has 39 MA's), (46, 43564),

Gene: LugYA_77 Start: 42845, Stop: 42630, Start Num: 23

Candidate Starts for LugYA_77:

(Start: 23 @42845 has 37 MA's), (Start: 26 @42842 has 55 MA's), (Start: 36 @42809 has 1 MA's), (49, 42680), (60, 42635),

Gene: Lunsford_65 Start: 42351, Stop: 42154, Start Num: 29

Candidate Starts for Lunsford_65:

(Start: 29 @42351 has 133 MA's), (39, 42294), (60, 42159),

Gene: MA5_69 Start: 41973, Stop: 41749, Start Num: 26

Candidate Starts for MA5_69:

(Start: 26 @41973 has 55 MA's), (28, 41967), (Start: 36 @41931 has 1 MA's), (60, 41754),

Gene: MK4_69 Start: 42048, Stop: 41824, Start Num: 26

Candidate Starts for MK4_69:

(Start: 26 @42048 has 55 MA's), (28, 42042), (Start: 36 @42006 has 1 MA's), (60, 41829),

Gene: MaCh_75 Start: 43510, Stop: 43283, Start Num: 15

Candidate Starts for MaCh_75:

(Start: 15 @43510 has 23 MA's), (Start: 35 @43456 has 1 MA's), (Start: 36 @43450 has 1 MA's), (44, 43378),

Gene: Mabel_75 Start: 43511, Stop: 43284, Start Num: 15

Candidate Starts for Mabel_75:

(Start: 15 @43511 has 23 MA's), (Start: 35 @43457 has 1 MA's), (Start: 36 @43451 has 1 MA's), (44, 43379),

Gene: MadMarie_72 Start: 42842, Stop: 42630, Start Num: 26

Candidate Starts for MadMarie_72:

(Start: 23 @42845 has 37 MA's), (Start: 26 @42842 has 55 MA's), (Start: 36 @42809 has 1 MA's), (49, 42680), (60, 42635),

Gene: Mainiac_73 Start: 42837, Stop: 42622, Start Num: 23

Candidate Starts for Mainiac_73:

(Start: 23 @42837 has 37 MA's), (Start: 26 @42834 has 55 MA's), (Start: 36 @42801 has 1 MA's), (49, 42672), (60, 42627),

Gene: Malec_70 Start: 43763, Stop: 43539, Start Num: 20

Candidate Starts for Malec_70:

(Start: 20 @43763 has 30 MA's), (Start: 35 @43712 has 1 MA's), (Start: 36 @43706 has 1 MA's), (48, 43580), (49, 43577), (51, 43574), (57, 43547),

Gene: Malinsilva_76 Start: 42833, Stop: 42621, Start Num: 26

Candidate Starts for Malinsilva_76:

(Start: 23 @42836 has 37 MA's), (Start: 26 @42833 has 55 MA's), (Start: 36 @42800 has 1 MA's), (49, 42671), (60, 42626),

Gene: Manu_73 Start: 42664, Stop: 42446, Start Num: 20

Candidate Starts for Manu_73:

(4, 42733), (Start: 20 @42664 has 30 MA's), (Start: 36 @42625 has 1 MA's), (42, 42589), (49, 42496), (60, 42451),

Gene: MarQuardt_74 Start: 42846, Stop: 42631, Start Num: 23

Candidate Starts for MarQuardt_74:

(Start: 23 @42846 has 37 MA's), (Start: 26 @42843 has 55 MA's), (Start: 36 @42810 has 1 MA's), (49, 42681), (60, 42636),

Gene: Margo_69 Start: 42586, Stop: 42374, Start Num: 26
Candidate Starts for Margo_69:
(Start: 26 @42586 has 55 MA's), (Start: 36 @42553 has 1 MA's), (49, 42424), (60, 42379),

Gene: Marie_72 Start: 42841, Stop: 42629, Start Num: 26
Candidate Starts for Marie_72:
(Start: 23 @42844 has 37 MA's), (Start: 26 @42841 has 55 MA's), (Start: 36 @42808 has 1 MA's),
(49, 42679), (60, 42634),

Gene: Marius_74 Start: 42661, Stop: 42443, Start Num: 20
Candidate Starts for Marius_74:
(4, 42730), (Start: 20 @42661 has 30 MA's), (Start: 36 @42622 has 1 MA's), (42, 42586), (44, 42553),
(49, 42493), (60, 42448),

Gene: MarysWell_66 Start: 42293, Stop: 41991, Start Num: 31
Candidate Starts for MarysWell_66:
(Start: 31 @42293 has 11 MA's), (39, 42239), (40, 42233), (50, 42122), (52, 42116), (61, 42074),

Gene: Maverick_66 Start: 42357, Stop: 42160, Start Num: 29
Candidate Starts for Maverick_66:
(Start: 29 @42357 has 133 MA's), (39, 42300), (60, 42165),

Gene: Maxo_68 Start: 42359, Stop: 42162, Start Num: 29
Candidate Starts for Maxo_68:
(Start: 29 @42359 has 133 MA's), (39, 42302), (60, 42167),

Gene: Mazhar510_67 Start: 42358, Stop: 42161, Start Num: 29
Candidate Starts for Mazhar510_67:
(Start: 29 @42358 has 133 MA's), (39, 42301), (60, 42166),

Gene: Medusa_67 Start: 42371, Stop: 42174, Start Num: 29
Candidate Starts for Medusa_67:
(Start: 29 @42371 has 133 MA's), (39, 42314), (60, 42179),

Gene: MeeZee_66 Start: 42354, Stop: 42157, Start Num: 29
Candidate Starts for MeeZee_66:
(Start: 29 @42354 has 133 MA's), (39, 42297), (60, 42162),

Gene: Melvin_69 Start: 42352, Stop: 42155, Start Num: 29
Candidate Starts for Melvin_69:
(Start: 29 @42352 has 133 MA's), (39, 42295), (60, 42160),

Gene: Methuselah_67 Start: 42868, Stop: 42653, Start Num: 23
Candidate Starts for Methuselah_67:
(Start: 23 @42868 has 37 MA's), (Start: 26 @42865 has 55 MA's), (Start: 36 @42832 has 1 MA's),
(49, 42703), (60, 42658),

Gene: Micasa_64 Start: 42015, Stop: 41713, Start Num: 31
Candidate Starts for Micasa_64:
(Start: 31 @42015 has 11 MA's), (39, 41961), (40, 41955), (50, 41844), (52, 41838), (61, 41796),

Gene: Microwolf_70 Start: 42860, Stop: 42645, Start Num: 23
Candidate Starts for Microwolf_70:

(Start: 23 @42860 has 37 MA's), (Start: 26 @42857 has 55 MA's), (Start: 36 @42824 has 1 MA's),
(49, 42695), (60, 42650),

Gene: MiculUcigas_73 Start: 43404, Stop: 43177, Start Num: 18
Candidate Starts for MiculUcigas_73:
(Start: 18 @43404 has 39 MA's), (Start: 35 @43350 has 1 MA's), (51, 43212),

Gene: Miko_66 Start: 42778, Stop: 42560, Start Num: 20
Candidate Starts for Miko_66:
(Start: 20 @42778 has 30 MA's), (38, 42703), (49, 42598), (51, 42595),

Gene: Milcery_66 Start: 41805, Stop: 41503, Start Num: 31
Candidate Starts for Milcery_66:
(Start: 31 @41805 has 11 MA's), (39, 41751), (40, 41745), (50, 41634), (52, 41628), (61, 41586),

Gene: Millski_66 Start: 42358, Stop: 42161, Start Num: 29
Candidate Starts for Millski_66:
(Start: 29 @42358 has 133 MA's), (39, 42301), (60, 42166),

Gene: Miramae_66 Start: 42179, Stop: 41955, Start Num: 29
Candidate Starts for Miramae_66:
(Start: 29 @42179 has 133 MA's), (39, 42122), (40, 42116), (60, 41960),

Gene: Misomonster_75 Start: 42871, Stop: 42656, Start Num: 23
Candidate Starts for Misomonster_75:
(Start: 23 @42871 has 37 MA's), (Start: 26 @42868 has 55 MA's), (Start: 36 @42835 has 1 MA's),
(60, 42661),

Gene: MissWhite_71 Start: 41889, Stop: 41647, Start Num: 22
Candidate Starts for MissWhite_71:
(Start: 22 @41889 has 17 MA's), (Start: 35 @41835 has 1 MA's), (Start: 36 @41829 has 1 MA's), (47,
41724), (49, 41700),

Gene: MoneyMay_73 Start: 42844, Stop: 42629, Start Num: 23
Candidate Starts for MoneyMay_73:
(Start: 23 @42844 has 37 MA's), (Start: 26 @42841 has 55 MA's), (Start: 36 @42808 has 1 MA's),
(49, 42679), (60, 42634),

Gene: Morpher26_66 Start: 42654, Stop: 42430, Start Num: 29
Candidate Starts for Morpher26_66:
(Start: 29 @42654 has 133 MA's), (39, 42597), (40, 42591), (44, 42540), (60, 42435),

Gene: Morrow_68 Start: 42399, Stop: 42175, Start Num: 29
Candidate Starts for Morrow_68:
(Start: 29 @42399 has 133 MA's), (39, 42342), (40, 42336), (60, 42180),

Gene: MuchMore_77 Start: 42833, Stop: 42621, Start Num: 26
Candidate Starts for MuchMore_77:
(Start: 23 @42836 has 37 MA's), (Start: 26 @42833 has 55 MA's), (Start: 36 @42800 has 1 MA's),
(49, 42671), (60, 42626),

Gene: Mulciber_73 Start: 43052, Stop: 42825, Start Num: 15
Candidate Starts for Mulciber_73:

(Start: 15 @43052 has 23 MA's), (Start: 35 @42998 has 1 MA's), (44, 42920),

Gene: Munch_75 Start: 43515, Stop: 43288, Start Num: 15

Candidate Starts for Munch_75:

(Start: 15 @43515 has 23 MA's), (Start: 35 @43461 has 1 MA's), (Start: 36 @43455 has 1 MA's), (44, 43383),

Gene: Mundrea_66 Start: 42647, Stop: 42423, Start Num: 29

Candidate Starts for Mundrea_66:

(Start: 29 @42647 has 133 MA's), (39, 42590), (40, 42584), (44, 42533), (60, 42428),

Gene: Myxus_74 Start: 42923, Stop: 42705, Start Num: 16

Candidate Starts for Myxus_74:

(Start: 16 @42923 has 31 MA's), (Start: 36 @42866 has 1 MA's), (38, 42848),

Gene: NaSiaTalie_73 Start: 43498, Stop: 43271, Start Num: 18

Candidate Starts for NaSiaTalie_73:

(Start: 18 @43498 has 39 MA's), (Start: 35 @43444 has 1 MA's), (51, 43306),

Gene: Naji_75 Start: 44004, Stop: 43762, Start Num: 22

Candidate Starts for Naji_75:

(Start: 22 @44004 has 17 MA's), (Start: 35 @43950 has 1 MA's), (38, 43926),

Gene: Nebs_68 Start: 42396, Stop: 42172, Start Num: 29

Candidate Starts for Nebs_68:

(Start: 29 @42396 has 133 MA's), (39, 42339), (40, 42333), (60, 42177),

Gene: Nemo27_66 Start: 42356, Stop: 42159, Start Num: 29

Candidate Starts for Nemo27_66:

(Start: 29 @42356 has 133 MA's), (39, 42299), (60, 42164),

Gene: NicoleTera_70 Start: 43518, Stop: 43297, Start Num: 20

Candidate Starts for NicoleTera_70:

(Start: 20 @43518 has 30 MA's), (Start: 35 @43464 has 1 MA's), (51, 43332),

Gene: Noella_69 Start: 42561, Stop: 42349, Start Num: 26

Candidate Starts for Noella_69:

(Start: 26 @42561 has 55 MA's), (Start: 36 @42528 has 1 MA's), (49, 42399), (60, 42354),

Gene: Noelle_67 Start: 42962, Stop: 42738, Start Num: 29

Candidate Starts for Noelle_67:

(Start: 29 @42962 has 133 MA's), (39, 42905), (40, 42899), (49, 42788), (60, 42743),

Gene: Norbert_65 Start: 42560, Stop: 42348, Start Num: 26

Candidate Starts for Norbert_65:

(Start: 26 @42560 has 55 MA's), (Start: 36 @42527 has 1 MA's), (49, 42398), (60, 42353),

Gene: NorthStar_65 Start: 42357, Stop: 42160, Start Num: 29

Candidate Starts for NorthStar_65:

(Start: 29 @42357 has 133 MA's), (39, 42300), (60, 42165),

Gene: NotAPhaseMom_66 Start: 42361, Stop: 42164, Start Num: 29

Candidate Starts for NotAPhaseMom_66:

(Start: 29 @42361 has 133 MA's), (39, 42304), (60, 42169),

Gene: NothingSpecial_68 Start: 43574, Stop: 43308, Start Num: 7

Candidate Starts for NothingSpecial_68:

(Start: 7 @43574 has 1 MA's), (Start: 16 @43535 has 31 MA's), (Start: 35 @43481 has 1 MA's), (Start: 36 @43475 has 1 MA's), (48, 43349), (49, 43346), (51, 43343),

Gene: Nyxis_66 Start: 42247, Stop: 42050, Start Num: 29

Candidate Starts for Nyxis_66:

(Start: 29 @42247 has 133 MA's), (39, 42190), (60, 42055),

Gene: OKCentral2016_65 Start: 41306, Stop: 41055, Start Num: 10

Candidate Starts for OKCentral2016_65:

(Start: 10 @41306 has 1 MA's), (Start: 23 @41273 has 37 MA's), (Start: 31 @41249 has 11 MA's), (44, 41153), (49, 41105),

Gene: OKaNui_66 Start: 42407, Stop: 42210, Start Num: 29

Candidate Starts for OKaNui_66:

(Start: 29 @42407 has 133 MA's), (39, 42350), (60, 42215),

Gene: Obama12_68 Start: 42780, Stop: 42556, Start Num: 29

Candidate Starts for Obama12_68:

(Start: 29 @42780 has 133 MA's), (39, 42723), (40, 42717), (60, 42561),

Gene: Odin_73 Start: 42517, Stop: 42317, Start Num: 16

Candidate Starts for Odin_73:

(3, 42586), (Start: 6 @42556 has 4 MA's), (Start: 16 @42517 has 31 MA's), (Start: 35 @42463 has 1 MA's), (38, 42439), (51, 42325),

Gene: Ohfah_68 Start: 42396, Stop: 42172, Start Num: 29

Candidate Starts for Ohfah_68:

(Start: 29 @42396 has 133 MA's), (39, 42339), (40, 42333), (60, 42177),

Gene: OlanP_72 Start: 42837, Stop: 42619, Start Num: 20

Candidate Starts for OlanP_72:

(4, 42906), (Start: 20 @42837 has 30 MA's), (Start: 36 @42798 has 1 MA's), (42, 42762), (49, 42669), (60, 42624),

Gene: Ollie_74 Start: 42712, Stop: 42500, Start Num: 26

Candidate Starts for Ollie_74:

(Start: 23 @42715 has 37 MA's), (Start: 26 @42712 has 55 MA's), (Start: 36 @42679 has 1 MA's), (49, 42550), (60, 42505),

Gene: Orange_74 Start: 43064, Stop: 42837, Start Num: 15

Candidate Starts for Orange_74:

(Start: 15 @43064 has 23 MA's), (Start: 35 @43010 has 1 MA's), (Start: 36 @43004 has 1 MA's), (44, 42932),

Gene: P28Green_74 Start: 42847, Stop: 42632, Start Num: 23

Candidate Starts for P28Green_74:

(Start: 23 @42847 has 37 MA's), (Start: 26 @42844 has 55 MA's), (Start: 36 @42811 has 1 MA's), (49, 42682), (60, 42637),

Gene: PGHhamlin_76 Start: 42833, Stop: 42621, Start Num: 26
Candidate Starts for PGHhamlin_76:
(Start: 23 @42836 has 37 MA's), (Start: 26 @42833 has 55 MA's), (Start: 36 @42800 has 1 MA's),
(49, 42671), (60, 42626),

Gene: PackMan_73 Start: 42798, Stop: 42580, Start Num: 16
Candidate Starts for PackMan_73:
(Start: 16 @42798 has 31 MA's), (Start: 36 @42741 has 1 MA's), (38, 42723),

Gene: PainterBoy_75 Start: 43432, Stop: 43232, Start Num: 18
Candidate Starts for PainterBoy_75:
(11, 43456), (14, 43438), (Start: 18 @43432 has 39 MA's), (46, 43273),

Gene: Palestino_66 Start: 42357, Stop: 42160, Start Num: 29
Candidate Starts for Palestino_66:
(Start: 29 @42357 has 133 MA's), (39, 42300), (60, 42165),

Gene: Panamaxus_67 Start: 42560, Stop: 42348, Start Num: 26
Candidate Starts for Panamaxus_67:
(Start: 26 @42560 has 55 MA's), (Start: 36 @42527 has 1 MA's), (49, 42398), (60, 42353),

Gene: Pawn_72 Start: 42668, Stop: 42450, Start Num: 20
Candidate Starts for Pawn_72:
(4, 42737), (Start: 20 @42668 has 30 MA's), (Start: 36 @42629 has 1 MA's), (42, 42593), (44, 42560),
(49, 42500), (60, 42455),

Gene: PeaceMeal1_64 Start: 40823, Stop: 40584, Start Num: 19
Candidate Starts for PeaceMeal1_64:
(Start: 19 @40823 has 13 MA's), (Start: 36 @40763 has 1 MA's), (60, 40589),

Gene: Peaches_65 Start: 42356, Stop: 42159, Start Num: 29
Candidate Starts for Peaches_65:
(Start: 29 @42356 has 133 MA's), (39, 42299), (60, 42164),

Gene: Pembroke_74 Start: 42842, Stop: 42630, Start Num: 26
Candidate Starts for Pembroke_74:
(Start: 23 @42845 has 37 MA's), (Start: 26 @42842 has 55 MA's), (Start: 36 @42809 has 1 MA's),
(49, 42680), (60, 42635),

Gene: Penny1_74 Start: 42845, Stop: 42633, Start Num: 26
Candidate Starts for Penny1_74:
(Start: 23 @42848 has 37 MA's), (Start: 26 @42845 has 55 MA's), (Start: 36 @42812 has 1 MA's),
(49, 42683), (60, 42638),

Gene: Perplexer_66 Start: 42630, Stop: 42406, Start Num: 29
Candidate Starts for Perplexer_66:
(Start: 29 @42630 has 133 MA's), (39, 42573), (40, 42567), (44, 42516), (60, 42411),

Gene: PeterPeter_67 Start: 42354, Stop: 42157, Start Num: 29
Candidate Starts for PeterPeter_67:
(Start: 29 @42354 has 133 MA's), (39, 42297), (60, 42162),

Gene: Petersenfast_69 Start: 41946, Stop: 41683, Start Num: 15

Candidate Starts for Petersenfast_69:

(Start: 15 @41946 has 23 MA's), (Start: 35 @41892 has 1 MA's), (Start: 36 @41886 has 1 MA's), (44, 41814), (56, 41727),

Gene: PetiteSangsue_66 Start: 42633, Stop: 42409, Start Num: 29

Candidate Starts for PetiteSangsue_66:

(Start: 29 @42633 has 133 MA's), (39, 42576), (40, 42570), (44, 42519), (60, 42414),

Gene: Ph8s_76 Start: 42621, Stop: 42382, Start Num: 6

Candidate Starts for Ph8s_76:

(1, 42693), (Start: 6 @42621 has 4 MA's), (Start: 16 @42582 has 31 MA's), (Start: 35 @42528 has 1 MA's), (Start: 36 @42522 has 1 MA's), (38, 42504), (51, 42390),

Gene: Phacado_67 Start: 42356, Stop: 42159, Start Num: 29

Candidate Starts for Phacado_67:

(Start: 29 @42356 has 133 MA's), (39, 42299), (60, 42164),

Gene: Phaded_68 Start: 44715, Stop: 44476, Start Num: 22

Candidate Starts for Phaded_68:

(Start: 22 @44715 has 17 MA's), (Start: 36 @44652 has 1 MA's), (38, 44634), (49, 44529),

Gene: Phaeder_74 Start: 42798, Stop: 42580, Start Num: 16

Candidate Starts for Phaeder_74:

(Start: 16 @42798 has 31 MA's), (Start: 36 @42741 has 1 MA's), (38, 42723),

Gene: Phantastic_71 Start: 42234, Stop: 42010, Start Num: 26

Candidate Starts for Phantastic_71:

(Start: 26 @42234 has 55 MA's), (28, 42228), (Start: 36 @42192 has 1 MA's), (60, 42015),

Gene: Pharaoh_68 Start: 42838, Stop: 42611, Start Num: 16

Candidate Starts for Pharaoh_68:

(Start: 16 @42838 has 31 MA's), (54, 42625), (55, 42622),

Gene: Phelipe_68 Start: 42396, Stop: 42172, Start Num: 29

Candidate Starts for Phelipe_68:

(Start: 29 @42396 has 133 MA's), (39, 42339), (40, 42333), (60, 42177),

Gene: Phighter1804_67 Start: 42421, Stop: 42224, Start Num: 29

Candidate Starts for Phighter1804_67:

(Start: 29 @42421 has 133 MA's), (39, 42364), (60, 42229),

Gene: PhishRPhriends_70 Start: 41845, Stop: 41627, Start Num: 20

Candidate Starts for PhishRPhriends_70:

(4, 41914), (Start: 20 @41845 has 30 MA's), (Start: 36 @41806 has 1 MA's), (42, 41770), (49, 41677), (60, 41632),

Gene: Phoebe_75 Start: 42837, Stop: 42622, Start Num: 23

Candidate Starts for Phoebe_75:

(Start: 23 @42837 has 37 MA's), (Start: 26 @42834 has 55 MA's), (Start: 36 @42801 has 1 MA's), (49, 42672), (60, 42627),

Gene: Phonnegut_74 Start: 42868, Stop: 42650, Start Num: 16

Candidate Starts for Phonnegut_74:

(Start: 16 @42868 has 31 MA's), (Start: 36 @42811 has 1 MA's), (38, 42793),

Gene: Phontbonne_67 Start: 42263, Stop: 42066, Start Num: 29

Candidate Starts for Phontbonne_67:

(Start: 29 @42263 has 133 MA's), (39, 42206), (60, 42071),

Gene: Phoxy_74 Start: 42869, Stop: 42654, Start Num: 23

Candidate Starts for Phoxy_74:

(Start: 23 @42869 has 37 MA's), (Start: 26 @42866 has 55 MA's), (Start: 36 @42833 has 1 MA's), (49, 42704), (60, 42659),

Gene: Pioneer_74 Start: 42868, Stop: 42650, Start Num: 16

Candidate Starts for Pioneer_74:

(Start: 16 @42868 has 31 MA's), (Start: 36 @42811 has 1 MA's), (38, 42793),

Gene: Pipcraft_64 Start: 42357, Stop: 42160, Start Num: 29

Candidate Starts for Pipcraft_64:

(Start: 29 @42357 has 133 MA's), (39, 42300), (60, 42165),

Gene: Piro94_72 Start: 43466, Stop: 43239, Start Num: 18

Candidate Starts for Piro94_72:

(Start: 18 @43466 has 39 MA's), (Start: 35 @43412 has 1 MA's), (51, 43274), (58, 43244),

Gene: Pistachio_69 Start: 42142, Stop: 41939, Start Num: 32

Candidate Starts for Pistachio_69:

(Start: 32 @42142 has 5 MA's), (38, 42100), (49, 41989),

Gene: Pocahontas_68 Start: 42557, Stop: 42345, Start Num: 26

Candidate Starts for Pocahontas_68:

(Start: 26 @42557 has 55 MA's), (Start: 36 @42524 has 1 MA's), (49, 42395), (60, 42350),

Gene: Polymorphads_67 Start: 42377, Stop: 42153, Start Num: 29

Candidate Starts for Polymorphads_67:

(Start: 29 @42377 has 133 MA's), (39, 42320), (40, 42314), (60, 42158),

Gene: Pomar16_75 Start: 44044, Stop: 43802, Start Num: 22

Candidate Starts for Pomar16_75:

(Start: 22 @44044 has 17 MA's), (Start: 35 @43990 has 1 MA's), (38, 43966),

Gene: Poompha_63 Start: 40821, Stop: 40582, Start Num: 19

Candidate Starts for Poompha_63:

(Start: 19 @40821 has 13 MA's), (Start: 36 @40761 has 1 MA's), (60, 40587),

Gene: Popcicle_69 Start: 42557, Stop: 42345, Start Num: 26

Candidate Starts for Popcicle_69:

(Start: 26 @42557 has 55 MA's), (Start: 36 @42524 has 1 MA's), (49, 42395), (60, 42350),

Gene: PotatoSplit_75 Start: 42848, Stop: 42633, Start Num: 23

Candidate Starts for PotatoSplit_75:

(Start: 23 @42848 has 37 MA's), (Start: 26 @42845 has 55 MA's), (Start: 36 @42812 has 1 MA's), (49, 42683), (60, 42638),

Gene: Power_72 Start: 43836, Stop: 43612, Start Num: 18

Candidate Starts for Power_72:

(Start: 18 @43836 has 39 MA's), (48, 43653), (49, 43650), (51, 43647),

Gene: Priya_72 Start: 42595, Stop: 42377, Start Num: 16

Candidate Starts for Priya_72:

(Start: 16 @42595 has 31 MA's), (Start: 36 @42538 has 1 MA's), (38, 42520),

Gene: Pukovnik_69 Start: 44363, Stop: 44136, Start Num: 16

Candidate Starts for Pukovnik_69:

(Start: 16 @44363 has 31 MA's), (Start: 35 @44309 has 1 MA's), (51, 44171), (58, 44141),

Gene: Pumbaa_67 Start: 42302, Stop: 42105, Start Num: 29

Candidate Starts for Pumbaa_67:

(Start: 29 @42302 has 133 MA's), (39, 42245), (60, 42110),

Gene: Puppy_70 Start: 42214, Stop: 42011, Start Num: 32

Candidate Starts for Puppy_70:

(Start: 32 @42214 has 5 MA's), (38, 42172), (49, 42061),

Gene: PurpleHaze_73 Start: 42663, Stop: 42445, Start Num: 20

Candidate Starts for PurpleHaze_73:

(4, 42732), (Start: 20 @42663 has 30 MA's), (Start: 36 @42624 has 1 MA's), (42, 42588), (49, 42495), (60, 42450),

Gene: Qobbit_72 Start: 42557, Stop: 42339, Start Num: 16

Candidate Starts for Qobbit_72:

(Start: 16 @42557 has 31 MA's), (Start: 36 @42500 has 1 MA's), (38, 42482),

Gene: QueenB2_70 Start: 43119, Stop: 42895, Start Num: 18

Candidate Starts for QueenB2_70:

(Start: 18 @43119 has 39 MA's), (Start: 35 @43068 has 1 MA's), (48, 42936), (51, 42930), (57, 42903),

Gene: QueenBeesly_73 Start: 43793, Stop: 43569, Start Num: 18

Candidate Starts for QueenBeesly_73:

(Start: 18 @43793 has 39 MA's), (48, 43610), (49, 43607), (51, 43604),

Gene: QuinnKiro_68 Start: 42560, Stop: 42348, Start Num: 26

Candidate Starts for QuinnKiro_68:

(Start: 26 @42560 has 55 MA's), (Start: 36 @42527 has 1 MA's), (49, 42398), (60, 42353),

Gene: Rachaly_68 Start: 42923, Stop: 42705, Start Num: 20

Candidate Starts for Rachaly_68:

(Start: 20 @42923 has 30 MA's), (38, 42848), (49, 42743), (51, 42740),

Gene: Rahalelujah_74 Start: 42760, Stop: 42527, Start Num: 12

Candidate Starts for Rahalelujah_74:

(5, 42799), (Start: 12 @42760 has 1 MA's), (Start: 36 @42688 has 1 MA's), (38, 42670),

Gene: Rebeuca_67 Start: 42137, Stop: 41898, Start Num: 19

Candidate Starts for Rebeuca_67:

(Start: 19 @42137 has 13 MA's), (Start: 36 @42077 has 1 MA's), (49, 41948), (60, 41903),

Gene: RedRock_71 Start: 43761, Stop: 43537, Start Num: 20
Candidate Starts for RedRock_71:
(Start: 20 @43761 has 30 MA's), (Start: 23 @43758 has 37 MA's), (Start: 35 @43710 has 1 MA's),
(49, 43575), (51, 43572),

Gene: Refuge_70 Start: 44062, Stop: 43841, Start Num: 17
Candidate Starts for Refuge_70:
(Start: 17 @44062 has 8 MA's), (30, 44032),

Gene: Relief_66 Start: 42354, Stop: 42157, Start Num: 29
Candidate Starts for Relief_66:
(Start: 29 @42354 has 133 MA's), (39, 42297), (60, 42162),

Gene: ResDef_67 Start: 42560, Stop: 42348, Start Num: 26
Candidate Starts for ResDef_67:
(Start: 26 @42560 has 55 MA's), (Start: 36 @42527 has 1 MA's), (49, 42398), (60, 42353),

Gene: Retro23_73 Start: 43524, Stop: 43300, Start Num: 18
Candidate Starts for Retro23_73:
(Start: 18 @43524 has 39 MA's), (48, 43341), (49, 43338), (51, 43335),

Gene: RhynO_66 Start: 41808, Stop: 41539, Start Num: 13
Candidate Starts for RhynO_66:
(Start: 13 @41808 has 1 MA's), (27, 41775), (34, 41757), (40, 41700), (49, 41589),

Gene: Rockstar_68 Start: 42057, Stop: 41833, Start Num: 26
Candidate Starts for Rockstar_68:
(Start: 26 @42057 has 55 MA's), (28, 42051), (Start: 36 @42015 has 1 MA's), (60, 41838),

Gene: Romney_66 Start: 42354, Stop: 42157, Start Num: 29
Candidate Starts for Romney_66:
(Start: 29 @42354 has 133 MA's), (39, 42297), (60, 42162),

Gene: Roosevelt_65 Start: 42359, Stop: 42162, Start Num: 29
Candidate Starts for Roosevelt_65:
(Start: 29 @42359 has 133 MA's), (39, 42302), (60, 42167),

Gene: Ruin_67 Start: 42350, Stop: 42153, Start Num: 29
Candidate Starts for Ruin_67:
(Start: 29 @42350 has 133 MA's), (39, 42293), (60, 42158),

Gene: Rummer_73 Start: 42872, Stop: 42657, Start Num: 23
Candidate Starts for Rummer_73:
(Start: 23 @42872 has 37 MA's), (Start: 26 @42869 has 55 MA's), (Start: 36 @42836 has 1 MA's),
(49, 42707), (60, 42662),

Gene: Sabertooth_67 Start: 42359, Stop: 42162, Start Num: 29
Candidate Starts for Sabertooth_67:
(Start: 29 @42359 has 133 MA's), (39, 42302), (60, 42167),

Gene: Sabia_72 Start: 42852, Stop: 42637, Start Num: 23
Candidate Starts for Sabia_72:

(Start: 23 @42852 has 37 MA's), (Start: 26 @42849 has 55 MA's), (Start: 36 @42816 has 1 MA's), (49, 42687), (60, 42642),

Gene: Sabinator_72 Start: 42840, Stop: 42628, Start Num: 26

Candidate Starts for Sabinator_72:

(Start: 23 @42843 has 37 MA's), (Start: 26 @42840 has 55 MA's), (Start: 36 @42807 has 1 MA's), (49, 42678), (60, 42633),

Gene: Salz_70 Start: 41861, Stop: 41598, Start Num: 15

Candidate Starts for Salz_70:

(Start: 15 @41861 has 23 MA's), (Start: 35 @41807 has 1 MA's), (Start: 36 @41801 has 1 MA's), (44, 41729), (56, 41642),

Gene: SaturnRing_69 Start: 42595, Stop: 42392, Start Num: 32

Candidate Starts for SaturnRing_69:

(Start: 32 @42595 has 5 MA's), (38, 42553), (49, 42442),

Gene: Scamp_67 Start: 42359, Stop: 42162, Start Num: 29

Candidate Starts for Scamp_67:

(Start: 29 @42359 has 133 MA's), (39, 42302), (60, 42167),

Gene: Scherzo_73 Start: 43087, Stop: 42869, Start Num: 16

Candidate Starts for Scherzo_73:

(Start: 16 @43087 has 31 MA's), (Start: 36 @43030 has 1 MA's), (38, 43012),

Gene: Scout_68 Start: 41767, Stop: 41543, Start Num: 26

Candidate Starts for Scout_68:

(Start: 26 @41767 has 55 MA's), (28, 41761), (Start: 36 @41725 has 1 MA's), (49, 41593), (60, 41548),

Gene: SemperFi_73 Start: 43681, Stop: 43457, Start Num: 18

Candidate Starts for SemperFi_73:

(Start: 18 @43681 has 39 MA's), (48, 43498), (49, 43495), (51, 43492),

Gene: Serenity_76 Start: 43102, Stop: 42818, Start Num: 9

Candidate Starts for Serenity_76:

(Start: 9 @43102 has 4 MA's), (Start: 35 @43009 has 1 MA's), (Start: 36 @43003 has 1 MA's), (37, 42994), (47, 42895), (49, 42871),

Gene: Severus_64 Start: 40821, Stop: 40582, Start Num: 19

Candidate Starts for Severus_64:

(Start: 19 @40821 has 13 MA's), (Start: 36 @40761 has 1 MA's), (60, 40587),

Gene: Shaka_65 Start: 42354, Stop: 42157, Start Num: 29

Candidate Starts for Shaka_65:

(Start: 29 @42354 has 133 MA's), (39, 42297), (60, 42162),

Gene: Sham4_71 Start: 41945, Stop: 41682, Start Num: 15

Candidate Starts for Sham4_71:

(Start: 15 @41945 has 23 MA's), (Start: 35 @41891 has 1 MA's), (Start: 36 @41885 has 1 MA's), (44, 41813), (56, 41726),

Gene: SheaKeira_68 Start: 41846, Stop: 41625, Start Num: 16

Candidate Starts for SheaKeira_68:

(Start: 16 @41846 has 31 MA's), (Start: 35 @41792 has 1 MA's), (51, 41660),

Gene: SheldonCooper_67 Start: 42797, Stop: 42573, Start Num: 29

Candidate Starts for SheldonCooper_67:

(Start: 29 @42797 has 133 MA's), (39, 42740), (40, 42734), (60, 42578),

Gene: Shygu2_66 Start: 42684, Stop: 42460, Start Num: 29

Candidate Starts for Shygu2_66:

(Start: 29 @42684 has 133 MA's), (39, 42627), (40, 42621), (60, 42465),

Gene: Skipitt_66 Start: 42351, Stop: 42154, Start Num: 29

Candidate Starts for Skipitt_66:

(Start: 29 @42351 has 133 MA's), (39, 42294), (60, 42159),

Gene: Smeagan_75 Start: 43992, Stop: 43768, Start Num: 18

Candidate Starts for Smeagan_75:

(Start: 18 @43992 has 39 MA's), (Start: 35 @43941 has 1 MA's), (48, 43809), (49, 43806), (51, 43803),

Gene: SnapTap_72 Start: 43492, Stop: 43268, Start Num: 18

Candidate Starts for SnapTap_72:

(Start: 18 @43492 has 39 MA's), (48, 43309), (49, 43306), (51, 43303),

Gene: Snape_75 Start: 43054, Stop: 42827, Start Num: 15

Candidate Starts for Snape_75:

(Start: 15 @43054 has 23 MA's), (Start: 35 @43000 has 1 MA's), (44, 42922),

Gene: Snickers_70 Start: 42817, Stop: 42602, Start Num: 23

Candidate Starts for Snickers_70:

(Start: 23 @42817 has 37 MA's), (Start: 26 @42814 has 55 MA's), (Start: 36 @42781 has 1 MA's), (49, 42652), (60, 42607),

Gene: SoYo_71 Start: 42753, Stop: 42541, Start Num: 26

Candidate Starts for SoYo_71:

(Start: 23 @42756 has 37 MA's), (Start: 26 @42753 has 55 MA's), (Start: 36 @42720 has 1 MA's), (49, 42591), (60, 42546),

Gene: SoilDragon_73 Start: 42289, Stop: 42077, Start Num: 26

Candidate Starts for SoilDragon_73:

(Start: 23 @42292 has 37 MA's), (Start: 26 @42289 has 55 MA's), (Start: 36 @42256 has 1 MA's), (49, 42127), (60, 42082),

Gene: SororFago_74 Start: 44027, Stop: 43806, Start Num: 16

Candidate Starts for SororFago_74:

(Start: 16 @44027 has 31 MA's), (Start: 35 @43973 has 1 MA's), (Start: 36 @43967 has 1 MA's), (38, 43949), (51, 43841),

Gene: Soshari_76 Start: 42868, Stop: 42653, Start Num: 23

Candidate Starts for Soshari_76:

(Start: 23 @42868 has 37 MA's), (Start: 26 @42865 has 55 MA's), (Start: 36 @42832 has 1 MA's), (49, 42703), (60, 42658),

Gene: Sparxx_68 Start: 42352, Stop: 42155, Start Num: 29

Candidate Starts for Sparxx_68:

(Start: 29 @42352 has 133 MA's), (39, 42295), (60, 42160),

Gene: Spike509_74 Start: 42869, Stop: 42654, Start Num: 23

Candidate Starts for Spike509_74:

(Start: 23 @42869 has 37 MA's), (Start: 26 @42866 has 55 MA's), (Start: 36 @42833 has 1 MA's), (49, 42704), (60, 42659),

Gene: Spino_66 Start: 42360, Stop: 42163, Start Num: 29

Candidate Starts for Spino_66:

(Start: 29 @42360 has 133 MA's), (39, 42303), (60, 42168),

Gene: Spouty_69 Start: 42594, Stop: 42376, Start Num: 16

Candidate Starts for Spouty_69:

(Start: 16 @42594 has 31 MA's), (Start: 36 @42537 has 1 MA's), (38, 42519),

Gene: Stagni_71 Start: 42844, Stop: 42632, Start Num: 26

Candidate Starts for Stagni_71:

(Start: 23 @42847 has 37 MA's), (Start: 26 @42844 has 55 MA's), (Start: 36 @42811 has 1 MA's), (49, 42682), (60, 42637),

Gene: StarStuff_75 Start: 44006, Stop: 43764, Start Num: 22

Candidate Starts for StarStuff_75:

(Start: 22 @44006 has 17 MA's), (Start: 35 @43952 has 1 MA's), (38, 43928),

Gene: Stasia_66 Start: 42567, Stop: 42343, Start Num: 29

Candidate Starts for Stasia_66:

(Start: 29 @42567 has 133 MA's), (39, 42510), (40, 42504), (49, 42393), (60, 42348),

Gene: Steamy_67 Start: 42288, Stop: 42067, Start Num: 17

Candidate Starts for Steamy_67:

(Start: 17 @42288 has 8 MA's), (33, 42258), (48, 42108),

Gene: StepMih_73 Start: 42802, Stop: 42623, Start Num: 36

Candidate Starts for StepMih_73:

(Start: 23 @42838 has 37 MA's), (Start: 26 @42835 has 55 MA's), (Start: 36 @42802 has 1 MA's), (49, 42673), (60, 42628),

Gene: Stink_62 Start: 42459, Stop: 42235, Start Num: 29

Candidate Starts for Stink_62:

(Start: 29 @42459 has 133 MA's), (39, 42402), (40, 42396), (60, 42240),

Gene: Superchunk_74 Start: 42168, Stop: 41929, Start Num: 6

Candidate Starts for Superchunk_74:

(1, 42240), (2, 42222), (Start: 6 @42168 has 4 MA's), (Start: 16 @42129 has 31 MA's), (Start: 35 @42075 has 1 MA's), (38, 42051), (51, 41937),

Gene: SweetiePie_72 Start: 43624, Stop: 43400, Start Num: 18

Candidate Starts for SweetiePie_72:

(Start: 18 @43624 has 39 MA's), (48, 43441), (49, 43438), (51, 43435),

Gene: SwirlSquare_79 Start: 42851, Stop: 42651, Start Num: 16

Candidate Starts for SwirlSquare_79:

(Start: 16 @42851 has 31 MA's), (Start: 35 @42797 has 1 MA's), (Start: 36 @42791 has 1 MA's), (38, 42773),

Gene: Swirley_66 Start: 41955, Stop: 41653, Start Num: 31

Candidate Starts for Swirley_66:

(Start: 31 @41955 has 11 MA's), (39, 41901), (40, 41895), (50, 41784), (52, 41778), (61, 41736),

Gene: TNguyen7_70 Start: 42555, Stop: 42352, Start Num: 32

Candidate Starts for TNguyen7_70:

(Start: 32 @42555 has 5 MA's), (38, 42513), (49, 42402),

Gene: Taquarus_66 Start: 42360, Stop: 42163, Start Num: 29

Candidate Starts for Taquarus_66:

(Start: 29 @42360 has 133 MA's), (39, 42303), (60, 42168),

Gene: TarsusIV_70 Start: 43465, Stop: 43244, Start Num: 17

Candidate Starts for TarsusIV_70:

(Start: 17 @43465 has 8 MA's), (Start: 35 @43411 has 1 MA's), (Start: 36 @43405 has 1 MA's), (38, 43387), (51, 43279),

Gene: Tarynearal_65 Start: 41791, Stop: 41489, Start Num: 31

Candidate Starts for Tarynearal_65:

(Start: 31 @41791 has 11 MA's), (39, 41737), (40, 41731), (50, 41620), (52, 41614), (61, 41572),

Gene: Taurus_75 Start: 42844, Stop: 42629, Start Num: 23

Candidate Starts for Taurus_75:

(Start: 23 @42844 has 37 MA's), (Start: 26 @42841 has 55 MA's), (Start: 36 @42808 has 1 MA's), (49, 42679), (60, 42634),

Gene: Texage_67 Start: 42561, Stop: 42349, Start Num: 26

Candidate Starts for Texage_67:

(Start: 26 @42561 has 55 MA's), (Start: 36 @42528 has 1 MA's), (49, 42399), (60, 42354),

Gene: Thanksgivukkah_66 Start: 42355, Stop: 42158, Start Num: 29

Candidate Starts for Thanksgivukkah_66:

(Start: 29 @42355 has 133 MA's), (39, 42298), (45, 42244), (60, 42163),

Gene: Tiffany_73 Start: 42729, Stop: 42514, Start Num: 23

Candidate Starts for Tiffany_73:

(Start: 23 @42729 has 37 MA's), (Start: 26 @42726 has 55 MA's), (Start: 36 @42693 has 1 MA's), (49, 42564), (60, 42519),

Gene: Timothy_75 Start: 43031, Stop: 42804, Start Num: 15

Candidate Starts for Timothy_75:

(Start: 15 @43031 has 23 MA's), (Start: 35 @42977 has 1 MA's), (Start: 36 @42971 has 1 MA's), (44, 42899),

Gene: TinaFeyge_65 Start: 42352, Stop: 42155, Start Num: 29

Candidate Starts for TinaFeyge_65:

(Start: 29 @42352 has 133 MA's), (39, 42295), (60, 42160),

Gene: TinyTimmy_71 Start: 42760, Stop: 42533, Start Num: 15

Candidate Starts for TinyTimmy_71:

(Start: 15 @42760 has 23 MA's), (Start: 35 @42706 has 1 MA's), (Start: 36 @42700 has 1 MA's), (44, 42628),

Gene: Tinybot_66 Start: 42387, Stop: 42190, Start Num: 29

Candidate Starts for Tinybot_66:

(Start: 29 @42387 has 133 MA's), (39, 42330), (60, 42195),

Gene: TopsytheTRex_72 Start: 43101, Stop: 42820, Start Num: 9

Candidate Starts for TopsytheTRex_72:

(Start: 9 @43101 has 4 MA's), (Start: 35 @43008 has 1 MA's), (Start: 36 @43002 has 1 MA's), (38, 42984), (49, 42873),

Gene: TiroTheta9_66 Start: 42351, Stop: 42154, Start Num: 29

Candidate Starts for TiroTheta9_66:

(Start: 29 @42351 has 133 MA's), (39, 42294), (60, 42159),

Gene: Todacoro_69 Start: 42560, Stop: 42348, Start Num: 26

Candidate Starts for Todacoro_69:

(Start: 26 @42560 has 55 MA's), (Start: 36 @42527 has 1 MA's), (49, 42398), (60, 42353),

Gene: Tomathan_75 Start: 44117, Stop: 43875, Start Num: 22

Candidate Starts for Tomathan_75:

(Start: 22 @44117 has 17 MA's), (Start: 35 @44063 has 1 MA's), (38, 44039),

Gene: Topanga_63 Start: 41611, Stop: 41378, Start Num: 23

Candidate Starts for Topanga_63:

(Start: 23 @41611 has 37 MA's), (Start: 35 @41563 has 1 MA's), (Start: 36 @41557 has 1 MA's), (60, 41383),

Gene: Trike_63 Start: 40825, Stop: 40589, Start Num: 19

Candidate Starts for Trike_63:

(Start: 19 @40825 has 13 MA's), (Start: 36 @40768 has 1 MA's), (60, 40594),

Gene: Trixie_72 Start: 44253, Stop: 44035, Start Num: 21

Candidate Starts for Trixie_72:

(Start: 21 @44253 has 3 MA's), (Start: 35 @44202 has 1 MA's), (38, 44178), (47, 44091), (51, 44070), (57, 44043),

Gene: Trooper_72 Start: 43427, Stop: 43203, Start Num: 20

Candidate Starts for Trooper_72:

(Start: 20 @43427 has 30 MA's), (Start: 35 @43376 has 1 MA's), (Start: 36 @43370 has 1 MA's), (49, 43241), (51, 43238),

Gene: TroyPia_68 Start: 42391, Stop: 42167, Start Num: 29

Candidate Starts for TroyPia_68:

(Start: 29 @42391 has 133 MA's), (39, 42334), (40, 42328), (60, 42172),

Gene: Tubs_74 Start: 42798, Stop: 42580, Start Num: 16

Candidate Starts for Tubs_74:

(Start: 16 @42798 has 31 MA's), (Start: 36 @42741 has 1 MA's), (38, 42723),

Gene: Turbido_73 Start: 43711, Stop: 43487, Start Num: 18

Candidate Starts for Turbido_73:

(Start: 18 @43711 has 39 MA's), (Start: 35 @43660 has 1 MA's), (48, 43528), (49, 43525), (51, 43522),

Gene: Twister_65 Start: 41732, Stop: 41499, Start Num: 23

Candidate Starts for Twister_65:

(Start: 23 @41732 has 37 MA's), (Start: 35 @41684 has 1 MA's), (Start: 36 @41678 has 1 MA's), (60, 41504),

Gene: TygerBlood_67 Start: 42357, Stop: 42160, Start Num: 29

Candidate Starts for TygerBlood_67:

(Start: 29 @42357 has 133 MA's), (39, 42300), (60, 42165),

Gene: Ugenie5_69 Start: 43086, Stop: 42868, Start Num: 16

Candidate Starts for Ugenie5_69:

(Start: 16 @43086 has 31 MA's), (Start: 36 @43029 has 1 MA's), (38, 43011),

Gene: Ulysses_66 Start: 42043, Stop: 41846, Start Num: 29

Candidate Starts for Ulysses_66:

(Start: 29 @42043 has 133 MA's), (39, 41986), (60, 41851),

Gene: Updawg_73 Start: 43362, Stop: 43135, Start Num: 18

Candidate Starts for Updawg_73:

(Start: 18 @43362 has 39 MA's), (Start: 35 @43308 has 1 MA's), (51, 43170),

Gene: VC3_74 Start: 43459, Stop: 43217, Start Num: 22

Candidate Starts for VC3_74:

(Start: 22 @43459 has 17 MA's), (Start: 35 @43405 has 1 MA's), (38, 43381), (48, 43273),

Gene: Veracruz_66 Start: 42560, Stop: 42348, Start Num: 26

Candidate Starts for Veracruz_66:

(Start: 26 @42560 has 55 MA's), (Start: 36 @42527 has 1 MA's), (49, 42398), (60, 42353),

Gene: Vix_70 Start: 42927, Stop: 42712, Start Num: 23

Candidate Starts for Vix_70:

(Start: 23 @42927 has 37 MA's), (Start: 26 @42924 has 55 MA's), (Start: 36 @42891 has 1 MA's), (49, 42762), (60, 42717),

Gene: WalterMcMickey_65 Start: 41732, Stop: 41499, Start Num: 23

Candidate Starts for WalterMcMickey_65:

(Start: 23 @41732 has 37 MA's), (Start: 35 @41684 has 1 MA's), (Start: 36 @41678 has 1 MA's), (60, 41504),

Gene: Wander_67 Start: 42354, Stop: 42157, Start Num: 29

Candidate Starts for Wander_67:

(Start: 29 @42354 has 133 MA's), (39, 42297), (60, 42162),

Gene: Watson_73 Start: 42833, Stop: 42621, Start Num: 26

Candidate Starts for Watson_73:

(Start: 23 @42836 has 37 MA's), (Start: 26 @42833 has 55 MA's), (Start: 36 @42800 has 1 MA's), (49, 42671), (60, 42626),

Gene: WeiHuaDA_73 Start: 44299, Stop: 44075, Start Num: 20

Candidate Starts for WeiHuaDA_73:

(Start: 20 @44299 has 30 MA's), (Start: 35 @44248 has 1 MA's), (Start: 36 @44242 has 1 MA's), (48, 44116), (49, 44113), (51, 44110), (57, 44083),

Gene: Whabigail7_73 Start: 43711, Stop: 43487, Start Num: 18

Candidate Starts for Whabigail7_73:

(Start: 18 @43711 has 39 MA's), (Start: 35 @43660 has 1 MA's), (48, 43528), (49, 43525), (51, 43522),

Gene: WideWale_73 Start: 43362, Stop: 43135, Start Num: 18

Candidate Starts for WideWale_73:

(Start: 18 @43362 has 39 MA's), (Start: 35 @43308 has 1 MA's), (51, 43170),

Gene: Wilbur_67 Start: 42354, Stop: 42157, Start Num: 29

Candidate Starts for Wilbur_67:

(Start: 29 @42354 has 133 MA's), (39, 42297), (60, 42162),

Gene: Wile_65 Start: 42663, Stop: 42439, Start Num: 29

Candidate Starts for Wile_65:

(Start: 29 @42663 has 133 MA's), (39, 42606), (40, 42600), (44, 42549), (60, 42444),

Gene: Wizard007_66 Start: 42389, Stop: 42165, Start Num: 29

Candidate Starts for Wizard007_66:

(Start: 29 @42389 has 133 MA's), (39, 42332), (40, 42326), (44, 42275), (60, 42170),

Gene: Wooldri_76 Start: 42756, Stop: 42541, Start Num: 23

Candidate Starts for Wooldri_76:

(Start: 23 @42756 has 37 MA's), (Start: 26 @42753 has 55 MA's), (Start: 36 @42720 has 1 MA's), (49, 42591), (60, 42546),

Gene: Xena_65 Start: 42630, Stop: 42406, Start Num: 29

Candidate Starts for Xena_65:

(Start: 29 @42630 has 133 MA's), (39, 42573), (40, 42567), (44, 42516), (60, 42411),

Gene: XianYue_68 Start: 43295, Stop: 43074, Start Num: 19

Candidate Starts for XianYue_68:

(Start: 19 @43295 has 13 MA's), (38, 43217), (49, 43112), (58, 43079),

Gene: Yecey3_76 Start: 42829, Stop: 42608, Start Num: 20

Candidate Starts for Yecey3_76:

(Start: 20 @42829 has 30 MA's), (Start: 36 @42769 has 1 MA's), (38, 42751), (47, 42664),

Gene: YoSam321_67 Start: 42351, Stop: 42154, Start Num: 29

Candidate Starts for YoSam321_67:

(Start: 29 @42351 has 133 MA's), (39, 42294), (60, 42159),

Gene: Zetzy_71 Start: 42407, Stop: 42192, Start Num: 23

Candidate Starts for Zetzy_71:

(Start: 23 @42407 has 37 MA's), (Start: 36 @42371 has 1 MA's), (41, 42338), (44, 42302), (49, 42242), (60, 42197),

Gene: Zimmer_71 Start: 43934, Stop: 43707, Start Num: 17

Candidate Starts for Zimmer_71:

(Start: 17 @43934 has 8 MA's), (Start: 35 @43880 has 1 MA's), (Start: 36 @43874 has 1 MA's), (38, 43856), (48, 43748), (51, 43742),