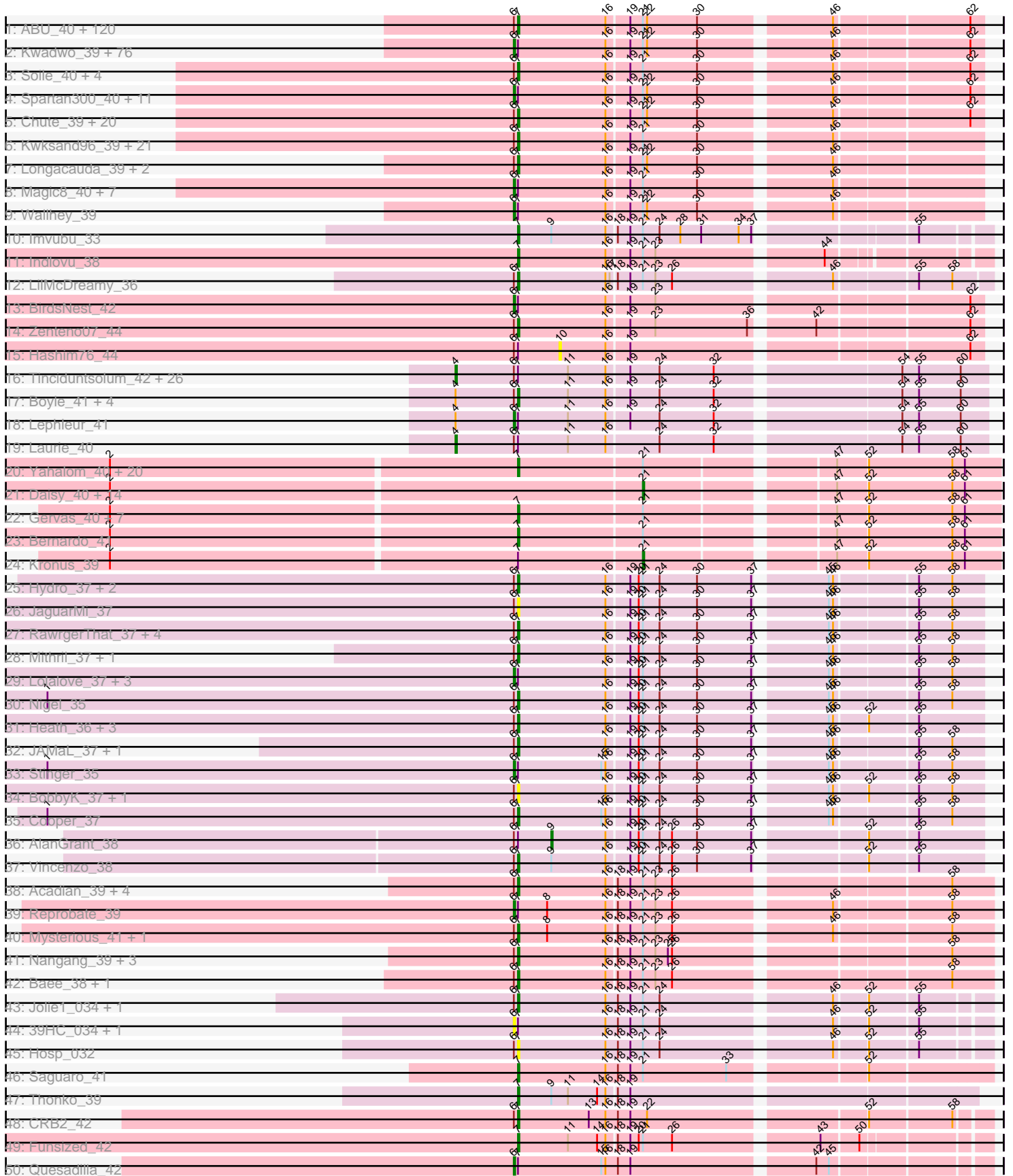
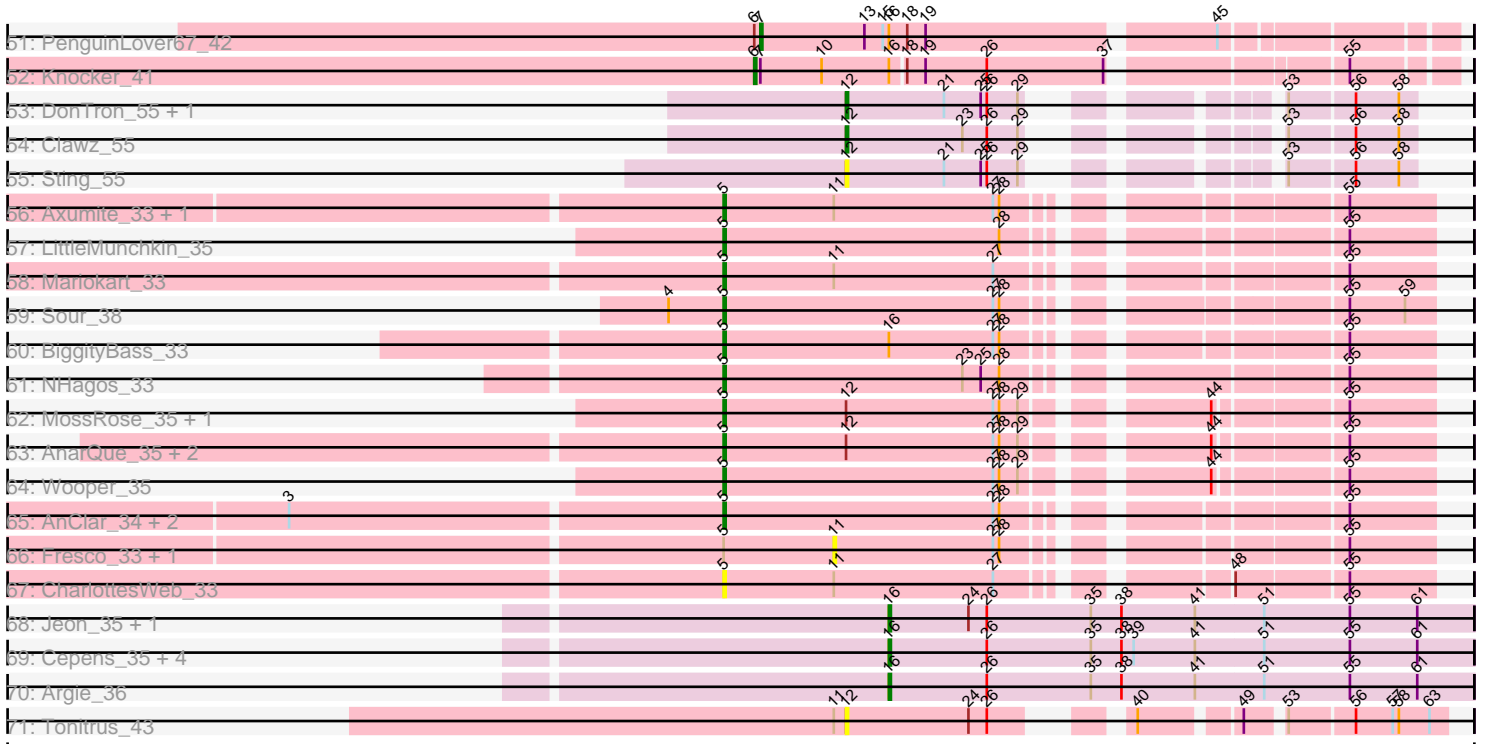


Pham 157484



Pham 157484



Note: Tracks are now grouped by subcluster and scaled. Switching in subcluster is indicated by changes in track color. Track scale is now set by default to display the region 30 bp upstream of start 1 to 30 bp downstream of the last possible start. If this default region is judged to be packed too tightly with annotated starts, the track will be further scaled to only show that region of the ORF with annotated starts. This action will be indicated by adding "Zoomed" to the title. For starts, yellow indicates the location of called starts comprised solely of Glimmer/GeneMark auto-annotations, green indicates the location of called starts with at least 1 manual gene annotation.

Pham 157484 Report

This analysis was run 04/13/24 on database version 558.

Pham number 157484 has 442 members, 54 are drafts.

Phages represented in each track:

- Track 1 : ABU_40, Morgushi_40, MiniBoss_40, Hamish_40, PhrodoBaggins_39, Badfish_40, Freya_39, Horchata_40, Mag7_39, Fang_40, Katniss_40, Dice_41, Mcshane_39, Schadenfreude_39, Orion_40, Mecca_39, LostAndPhound_39, Scoot17C_40, Haleema_39, Charles1_40, Colbert_40, Megatron_40, Bishoperium_39, Quisquiliae_40, Potter_39, Xavier_39, Phunky_40, IsaacEli_40, Lulwa_40, Phipps_40, Held_40, Beaglebox_39, Slatt_40, Bluephacebaby_39, Mulan_39, LeiMonet_40, Harvey_40, CampRoach_39, Lasso_40, Tooj_40, KingVeVeVe_40, Ricotta_40, Vortex_40, AltPhacts_40, RedMaple_39, Gophee_40, Mikota_40, Fozzie_39, Banjo_39, KingTut_31, BlueHusk_40, Puhltonio_40, Nyala_39, Oosterbaan_40, Craff_40, Kloppinator_40, Anderson_40, Kahve_39, Soto_40, Legolas_39, Fringe_40, MRabcd_39, DirtJuice_40, Haimas_40, Zelda_40, TallGrassMM_40, Podrick_40, Phergie_39, Adriana_40, Thora_40, Sheila_40, Samaymay_40, Hetaeria_40, Basato_41, Usavi_40, Veritas_39, Pacifista_41, HenryJackson_39, True_39, PG1_40, Simielle_39, Murdoc_40, Prickles_40, Iridoclysis_40, Cornobble_39, Orfeu_39, Giraffe_40, Pops_40, OSmaximus_40, Chah_41, Yoshand_40, PhrankReynolds_39, SDcharge11_40, OliverWalter_40, BlackStallion_40, Morty_40, Pherdinand_40, PhenghisKhan_39, KlimbOn_40, Solosis_39, Omniscient_40, Skippy_40, Squiggle_40, UncleHowie_40, Burr_39, Boehler_40, Serendipity_40, Childish_39, BatteryCK_39, MrPhizzler_39, Kailash_40, Maru_39, LemonSlice_40, Dingo_40, Kikipoo_40, Chorkpop_40, Virapocalypse_40, Newman_40, Andre_40, Phareon_40, Daffy_40
- Track 2 : Kwadwo_39, Mana_39, JangoPhett_40, DoesntMatter_40, Manad_39, Megamind20_40, Dione_39, Timmi_39, UAch1_40, Swish_40, PhatCats2014_40, Roliet_40, Phamished_40, JacAttac_40, SassyCat97_39, Telesworld_39, CamL_40, TomBombadil_40, Lumine_39, Mesh1_40, Kimbrough_40, Daka_40, ShiVal_40, YouGoGlencoco_40, Matalotodo_39, Cosmoli16_39, Zaider_41, DonSanchon_39, FriarPreacher_40, HighStump_39, LuckyMarjie_39, QueenBeane_40, Cannibal_40, Buckeye_40, Orwigg_40, Altwerkus_39, Cher_39, Hocus_39, Pipsqueak_40, Antonia_39, Vivaldi_40, Hartsy_39, Nacho_0040, FugateOSU_39, Riggan_40, Numberten_40, MitKao_40, FluffyNinja_40, Mutante_39, Gwilliam_40, Aelin_39, Gareth_39, Plmatters_40, Placalicious_39, Waterdiva_40, Nicole21_40, Sophia_39, Jillium_39, Selr12_40, Mosaic_39, Phleuron_39, KLucky39_40, ThreeOh3D2_40, Eugenia_40, Crownjwl_40, Olak_40, LeeLot_40, Vista_40, Rimu_41, Surely_40, AbsoluteMadLad_39, Sigman_40, CheetO_40, Squid_40, Inverness_40, Hertubise_40, MichaelPhcott_39
- Track 3 : Soile_40, Brilliant_40, JakeO_39, DelRivs_39, Schueller_40

- Track 4 : Spartan300_40, Eremos_40, Lulumae_39, HSavage_40, Roscoe_41, Serpentine_0040, Piglet_0039, Chunky_40, Olive_40, Grand2040_39, Roy17_40, Gyarad_0040
- Track 5 : Chute_39, Scrick_40, Keitherie_40, Robyn_39, Lopsy_39, PhatLouie_40, EmpTee_40, Apizium_39, Carthage_38, Swiphy_41, Chaelin_40, Coletti_39, Valjean_40, Vaishali24_39, Windsor_39, Virgeve_39, Toni_39, Tomlarah_40, Frankicide_40, Suffolk_40, ProfessorX_40
- Track 6 : Kwksand96_39, MelsMeow_39, Melc17_40, Ashraf_39, Emiris_40, DaddyDaniels_40, LasagnaCat_40, Jiminy_39, JDog_40, Struggle_39, Weher20_40, ImtiyazSitla_39, Inchworm_40, DuchessDung_38, Dati_40, Trypo_40, Maskar_39, Oline_39, PinheadLarry_40, Doddsville_40, Durga_40, Duggie_39
- Track 7 : Longacauda_39, Pinkman_39, Zonia_40
- Track 8 : Magic8_40, Cobra_40, CharlieGBrown_39, Labeouficaum_39, GeneCoco_40, Derpp_39, TyrionL_39, Etaye_40
- Track 9 : Wallhey_39
- Track 10 : Imvubu_33
- Track 11 : Indlovu_38
- Track 12 : LilMcDreamy_36
- Track 13 : BirdsNest_42
- Track 14 : Zenteno07_44
- Track 15 : Hashim76_44
- Track 16 : Tinciduntolum_42, TA17A_41, Rhinoforte_41, Qyrzula_38, Eaglehorse_41, Arbiter_40, Ares_41, Lars_41, MasterPo_41, FrenchFry_41, Bananafish_41, Tres_41, Holeinone_41, Hedgerow_41, Sabella_40, Allegro_41, Glass_41, ItsyBitsy1_41, Kheth_41, Kaleb_41, LizLemon_41, Brownie5_41, Faze9_40, Coffee_41, Godines_41, Rosebush_40, Opia_41
- Track 17 : Boyle_41, Blocker23_41, Phantasmagoria_41, Calamitous_41, West99_41
- Track 18 : Lephleur_41
- Track 19 : Laurie_40
- Track 20 : Yahalom_40, Nozo_40, Obutu_40, Mortcellus_39, Morty007_40, Gadget_41, Devonte_40, Compostia_41, LestyG_40, Jackstina_37, SynergyX_40, Baloo_40, Phlyer_40, Phayeta_41, Marley1013_40, Philly_39, GlenHope_41, RagingRooster_40, SlippinJimmy_40, Halfpint_39, Audrey_40
- Track 21 : Daisy_40, Rita1961_40, Corofin_40, Heathcliff_40, Casbah_39, Chandler_40, Abinghost_40, OrangeOswald_40, Akoma_40, MmasiCarm_40, ChaChing_40, Briakila_41, Ben11_39, HarveySr_40, RomaT_40
- Track 22 : Gervas_40, Deenasa_40, Kamiyu_40, Phaedrus_38, Athena_41, Yinz_40, Neos5_40, Tydolla_40
- Track 23 : Bernardo_41
- Track 24 : Kronus_39
- Track 25 : Hydro_37, Apex_37, Mudslide_37
- Track 26 : JaguarMi_37
- Track 27 : RawrgerThat_37, Prince_38, Waleliano_37, Austelle_38, VioletZ_37
- Track 28 : Mithril_37, BrownCNA_38
- Track 29 : Lolalove_37, Hangman_37, Fortunato_37, Magpie_36
- Track 30 : Nigel_35
- Track 31 : Heath_36, Nanao_36, ChrisnMich_36, Poster_36
- Track 32 : JAMaL_37, Zemanar_38
- Track 33 : Stinger_35
- Track 34 : BobbyK_37, Frederick_37
- Track 35 : Cooper_37
- Track 36 : AlanGrant_38

- Track 37 : Vincenzo_38
- Track 38 : Acadian_39, EastView9101_39, Donny_39, Suigeneris_39, SirJeffery_39
- Track 39 : Reprobate_39
- Track 40 : Mysterious_41, Phelemich_39
- Track 41 : Nangang_39, Serendipitous_38, DigitDog_39, StinkyVeggy_41
- Track 42 : Bae_38, Rich_38
- Track 43 : Jolie1_034, KayaCho_34
- Track 44 : 39HC_034, 40BC_034
- Track 45 : Hosp_032
- Track 46 : Saguaro_41
- Track 47 : Thonko_39
- Track 48 : CRB2_42
- Track 49 : Funsized_42
- Track 50 : Quesadilla_42
- Track 51 : PenguinLover67_42
- Track 52 : Knocker_41
- Track 53 : DonTron_55, Soos_51
- Track 54 : Clawz_55
- Track 55 : Sting_55
- Track 56 : Axumite_33, Ligma_33
- Track 57 : LittleMunchkin_35
- Track 58 : Mariokart_33
- Track 59 : Sour_38
- Track 60 : BiggityBass_33
- Track 61 : NHagos_33
- Track 62 : MossRose_35, CloverMinnie_35
- Track 63 : AnarQue_35, MakoManhole_35, CaiB_35
- Track 64 : Wooper_35
- Track 65 : AnClar_34, Yago84_33, Sisko_33
- Track 66 : Fresco_33, Shatter_33
- Track 67 : CharlottesWeb_33
- Track 68 : Jeon_35, GodPhather_36
- Track 69 : Cepens_35, D12_34, Taptic_35, PR_35, Megabear_35
- Track 70 : Argie_36
- Track 71 : Tonitrus_43

Summary of Final Annotations (See graph section above for start numbers):

The start number called the most often in the published annotations is 7, it was called in 222 of the 388 non-draft genes in the pham.

Genes that call this "Most Annotated" start:

- ABU_40, Acadian_39, Adriana_40, AltPhacts_40, Anderson_40, Andre_40, Apex_37, Apizium_39, Ashraf_39, Athena_41, Audrey_40, Austelle_38, Badfish_40, Bae_38, Baloo_40, Banjo_39, Basato_41, BatteryCK_39, Beaglebox_39, Bernardo_41, Bishoperium_39, BlackStallion_40, Blocker23_41, BlueHusk_40, Bluephacebaby_39, BobbyK_37, Boehler_40, Boyle_41, Brilliant_40, BrownCNA_38, Burr_39, CRB2_42, Calamitous_41, CampRoach_39, Carthage_38, Chaelin_40, Chah_41, Charles1_40, Childish_39, Chorkpop_40, ChrisnMich_36, Chute_39, Colbert_40, Coletti_39, Compostia_41, Cooper_37, Cornobble_39, Craff_40,

DaddyDaniels_40, Daffy_40, Dati_40, Deenasa_40, DelRivs_39, Devonte_40, Dice_41, DigitDog_39, Dingo_40, DirtJuice_40, Doddsville_40, Donny_39, DuchessDung_38, Duggie_39, Durga_40, EastView9101_39, Emiris_40, EmpTee_40, Fang_40, Fozzie_39, Frankicide_40, Frederick_37, Freya_39, Fringe_40, Funsized_42, Gadget_41, Gervas_40, Giraffe_40, GlenHope_41, Gophee_40, Haimas_40, Haleema_39, Halfpint_39, Hamish_40, Harvey_40, Heath_36, Held_40, HenryJackson_39, Hetaeria_40, Horchata_40, Hosp_032, Hydro_37, ImtiyazSitla_39, Imvubu_33, Inchworm_40, Indlovu_38, Iridoclysis_40, IsaacEli_40, JAMaL_37, JDog_40, Jackstina_37, JaguarMi_37, JakeO_39, Jiminy_39, Jolie1_034, Kahve_39, Kailash_40, Kamiyu_40, Katniss_40, KayaCho_34, Keitherie_40, Kikipoo_40, KingTut_31, KingVeVeVe_40, KlimbOn_40, Kloppinator_40, Kwksand96_39, LasagnaCat_40, Lasso_40, Legolas_39, LeiMonet_40, LemonSlice_40, LestyG_40, LilMcDreamy_36, Longacauda_39, Lopsy_39, LostAndPhound_39, Lulwa_40, MRabcd_39, Mag7_39, Marley1013_40, Maru_39, Maskar_39, Mcshane_39, Mecca_39, Megatron_40, Melc17_40, MelsMeow_39, Mikota_40, MiniBoss_40, Mithril_37, Morgushi_40, Mortcellus_39, Morty007_40, Morty_40, MrPhizzler_39, Mudslide_37, Mulan_39, Murdoc_40, Mysterious_41, Nanao_36, Nangang_39, Neos5_40, Newman_40, Nigel_35, Nozo_40, Nyala_39, OSmaximus_40, Obutu_40, Oline_39, OliverWalter_40, Omniscient_40, Oosterbaan_40, Orfeu_39, Orion_40, PG1_40, Pacifista_41, PenguinLover67_42, Phaedrus_38, Phantasmagoria_41, Phareon_40, PhatLouie_40, Phayeta_41, Phelemich_39, PhenghisKhan_39, Pherdinand_40, Phergie_39, Philly_39, Phipps_40, Phlyer_40, PhrankReynolds_39, PhrodoBaggins_39, Phunky_40, PinheadLarry_40, Pinkman_39, Podrick_40, Pops_40, Poster_36, Potter_39, Prickles_40, Prince_38, ProfessorX_40, Puhltonio_40, Quisquilliae_40, RagingRooster_40, RawrgerThat_37, RedMaple_39, Rich_38, Ricotta_40, Robyn_39, SDcharge11_40, Saguario_41, Samaymay_40, Schadenfreude_39, Schueller_40, Scoot17C_40, Scrick_40, Serendipitous_38, Serendipity_40, Sheila_40, Simielle_39, SirJeffery_39, Skippy_40, Slatt_40, SlippinJimmy_40, Soile_40, Solosis_39, Soto_40, Squiggle_40, StinkyVeggy_41, Struggle_39, Suffolk_40, Suigeneris_39, Swiphy_41, SynergyX_40, TallGrassMM_40, Thonko_39, Thora_40, Tomlarah_40, Toni_39, Tooj_40, True_39, Trypo_40, Tydolla_40, UncleHowie_40, Usavi_40, Vaishali24_39, Valjean_40, Veritas_39, Vincenzo_38, VioletZ_37, Virapocalypse_40, Virgeve_39, Vortex_40, Waleliano_37, Weher20_40, West99_41, Windsor_39, Xavier_39, Yahalom_40, Yinz_40, Yoshand_40, Zelda_40, Zemanar_38, Zenteno07_44, Zonia_40,

Genes that have the "Most Annotated" start but do not call it:

- 39HC_034, 40BC_034, AbsoluteMadLad_39, Aelin_39, AlanGrant_38, Allegro_41, Altwerkus_39, Antonia_39, Arbiter_40, Ares_41, Bananafish_41, BirdsNest_42, Brownie5_41, Buckeye_40, CamL_40, Cannibal_40, CharlieGBrown_39, CheetO_40, Cher_39, Chunky_40, Cobra_40, Coffee_41, Cosmolli16_39, Crownjwl_40, Daka_40, Derpp_39, Dione_39, DoesntMatter_40, DonSanchon_39, Eaglehorse_41, Eremos_40, Etaye_40, Eugenia_40, Faze9_40, FluffyNinja_40, Fortunato_37, FrenchFry_41, FriarPreacher_40, FugateOSU_39, Gareth_39, GeneCoco_40, Glass_41, Godines_41, Grand2040_39, Gwilliam_40, Gyarad_0040, HSavage_40, Hangman_37, Hartsy_39, Hashim76_44, Hedgerow_41, Hertubise_40, HighStump_39, Hocus_39, Holeinone_41, Inverness_40, ItsyBitsy1_41, JacAttac_40, JangoPhett_40, Jillium_39, KLucky39_40, Kaleb_41, Kheth_41, Kimbrough_40, Knocker_41, Kronus_39, Kwadwo_39, Labeouficaum_39, Lars_41, Laurie_40, LeeLot_40, Lephleur_41, LizLemon_41, Lolalove_37, LuckyMarjie_39, Lulumae_39, Lumine_39, Magic8_40, Magpie_36, Mana_39, Manad_39, MasterPo_41, Matalotodo_39, Megamind20_40, Mesh1_40, MichaelPhcott_39, MitKao_40,

Mosaic_39, Mutante_39, Nacho_0040, Nicole21_40, Numberten_40, Olak_40, Olive_40, Opia_41, Orwig_40, Phamished_40, PhatCats2014_40, Phleuron_39, Piglet_0039, Pipsqueak_40, Placalicious_39, Plmatters_40, QueenBeane_40, Quesadilla_42, Qyrzula_38, Reprobate_39, Rhinoforte_41, Riggan_40, Rimu_41, Roliet_40, Roscoe_41, Rosebush_40, Roy17_40, Sabella_40, SassyCat97_39, Selr12_40, Serpentine_0040, ShiVal_40, Sigman_40, Sophia_39, Spartan300_40, Squid_40, Stinger_35, Surely_40, Swish_40, TA17A_41, Telesworld_39, ThreeOh3D2_40, Timmi_39, Tinciduntolum_42, TomBombadil_40, Tres_41, TyrionL_39, UAch1_40, Vista_40, Vivaldi_40, Wallhey_39, Waterdiva_40, YouGoGlencoco_40, Zaider_41,

Genes that do not have the "Most Annotated" start:

- Abinghost_40, Akoma_40, AnClar_34, AnarQue_35, Argie_36, Axumite_33, Ben11_39, BiggityBass_33, Briakila_41, CaiB_35, Casbah_39, Cepens_35, ChaChing_40, Chandler_40, CharlottesWeb_33, Clawz_55, CloverMinnie_35, Corofin_40, D12_34, Daisy_40, DonTron_55, Fresco_33, GodPhather_36, HarveySr_40, Heathcliff_40, Jeon_35, Ligma_33, LittleMunchkin_35, MakoManhole_35, Mariokart_33, Megabear_35, MmasiCarm_40, MossRose_35, NHagos_33, OrangeOswald_40, PR_35, Rita1961_40, RomaT_40, Shatter_33, Sisko_33, Soos_51, Sour_38, Sting_55, Taptic_35, Tonitrus_43, Wooper_35, Yago84_33,

Summary by start number:

Start 4:

- Found in 35 of 442 (7.9%) of genes in pham
- Manual Annotations of this start: 26 of 388
- Called 80.0% of time when present
- Phage (with cluster) where this start called: Allegro_41 (B2), Arbiter_40 (B2), Ares_41 (B2), Bananafish_41 (B2), Brownie5_41 (B2), Coffee_41 (B2), Eaglehorse_41 (B2), Faze9_40 (B2), FrenchFry_41 (B2), Glass_41 (B2), Godines_41 (B2), Hedgerow_41 (B2), Holeinone_41 (B2), ItsyBitsy1_41 (B2), Kaleb_41 (B2), Kheth_41 (B2), Lars_41 (B2), Laurie_40 (B2), LizLemon_41 (B2), MasterPo_41 (B2), Opia_41 (B2), Qyrzula_38 (B2), Rhinoforte_41 (B2), Rosebush_40 (B2), Sabella_40 (B2), TA17A_41 (B2), Tinciduntolum_42 (B2), Tres_41 (B2),

Start 5:

- Found in 19 of 442 (4.3%) of genes in pham
- Manual Annotations of this start: 15 of 388
- Called 89.5% of time when present
- Phage (with cluster) where this start called: AnClar_34 (DR), AnarQue_35 (DR), Axumite_33 (DR), BiggityBass_33 (DR), CaiB_35 (DR), CharlottesWeb_33 (DR), CloverMinnie_35 (DR), Ligma_33 (DR), LittleMunchkin_35 (DR), MakoManhole_35 (DR), Mariokart_33 (DR), MossRose_35 (DR), NHagos_33 (DR), Sisko_33 (DR), Sour_38 (DR), Wooper_35 (DR), Yago84_33 (DR),

Start 6:

- Found in 359 of 442 (81.2%) of genes in pham
- Manual Annotations of this start: 99 of 388
- Called 30.6% of time when present
- Phage (with cluster) where this start called: 39HC_034 (B6), 40BC_034 (B6), AbsoluteMadLad_39 (B1), Aelin_39 (B1), Altwerkus_39 (B1), Antonia_39 (B1), BirdsNest_42 (B13), Buckeye_40 (B1), CamL_40 (B1), Cannibal_40 (B1),

CharlieGBrown_39 (B1), CheetO_40 (B1), Cher_39 (B1), Chunky_40 (B1), Cobra_40 (B1), Cosmolli16_39 (B1), Crownjwl_40 (B1), Daka_40 (B1), Derpp_39 (B1), Dione_39 (B1), DoesntMatter_40 (B1), DonSanchon_39 (B1), Eremos_40 (B1), Etaye_40 (B1), Eugenia_40 (B1), FluffyNinja_40 (B1), Fortunato_37 (B4), FriarPreacher_40 (B1), FugateOSU_39 (B1), Gareth_39 (B1), GeneCoco_40 (B1), Grand2040_39 (B1), Gwilliam_40 (B1), Gyarad_0040 (B1), HSavage_40 (B1), Hangman_37 (B4), Hartsy_39 (B1), Hertubise_40 (B1), HighStump_39 (B1), Hocus_39 (B1), Inverness_40 (B1), JacAttac_40 (B1), JangoPhett_40 (B1), Jillium_39 (B1), KLucky39_40 (B1), Kimbrough_40 (B1), Knocker_41 (B9), Kwadwo_39 (B1), Labeouficaum_39 (B1), LeeLot_40 (B1), Lephleur_41 (B2), Lolalove_37 (B4), LuckyMarjie_39 (B1), Lulumae_39 (B1), Lumine_39 (B1), Magic8_40 (B1), Magpie_36 (B4), Mana_39 (B1), Manad_39 (B1), Matalotodo_39 (B1), Megamind20_40 (B1), Mesh1_40 (B1), MichaelPhcott_39 (B1), MitKao_40 (B1), Mosaic_39 (B1), Mutante_39 (B1), Nacho_0040 (B1), Nicole21_40 (B1), Numberten_40 (B1), Olak_40 (B1), Olive_40 (B1), Orwigg_40 (B1), Phamished_40 (B1), PhatCats2014_40 (B1), Phleuron_39 (B1), Piglet_0039 (B1), Pipsqueak_40 (B1), Placalicious_39 (B1), Plmatters_40 (B1), QueenBeane_40 (B1), Quesadilla_42 (B9), Reprobate_39 (B5), Riggan_40 (B1), Rimu_41 (B1), Roliet_40 (B1), Roscoe_41 (B1), Roy17_40 (B1), SassyCat97_39 (B1), Selr12_40 (B1), Serpentine_0040 (B1), ShiVal_40 (B1), Sigman_40 (B1), Sophia_39 (B1), Spartan300_40 (B1), Squid_40 (B1), Stinger_35 (B4), Surely_40 (B1), Swish_40 (B1), Telesworld_39 (B1), ThreeOh3D2_40 (B1), Timmi_39 (B1), TomBombadil_40 (B1), TyrionL_39 (B1), UAch1_40 (B1), Vista_40 (B1), Vivaldi_40 (B1), Wallhey_39 (B1), Waterdiva_40 (B1), YouGoGlencoco_40 (B1), Zaider_41 (B1),

Start 7:

- Found in 395 of 442 (89.4%) of genes in pham
- Manual Annotations of this start: 222 of 388
- Called 64.3% of time when present
- Phage (with cluster) where this start called: ABU_40 (B1), Acadian_39 (B5), Adriana_40 (B1), AltPhacts_40 (B1), Anderson_40 (B1), Andre_40 (B1), Apex_37 (B4), Apizium_39 (B1), Ashraf_39 (B1), Athena_41 (B3), Audrey_40 (B3), Austelle_38 (B4), Badfish_40 (B1), Bae_38 (B5), Baloo_40 (B3), Banjo_39 (B1), Basato_41 (B1), BatteryCK_39 (B1), Beaglebox_39 (B1), Bernardo_41 (B3), Bishoperium_39 (B1), BlackStallion_40 (B1), Blocker23_41 (B2), BlueHusk_40 (B1), Bluephacebaby_39 (B1), BobbyK_37 (B4), Boehler_40 (B1), Boyle_41 (B2), Brilliant_40 (B1), BrownCNA_38 (B4), Burr_39 (B1), CRB2_42 (B9), Calamitous_41 (B2), CampRoach_39 (B1), Carthage_38 (B1), Chaelin_40 (B1), Chah_41 (B1), Charles1_40 (B1), Childish_39 (B1), Chorkpop_40 (B1), ChrisnMich_36 (B4), Chute_39 (B1), Colbert_40 (B1), Coletti_39 (B1), Compostia_41 (B3), Cooper_37 (B4), Cornobble_39 (B1), Craff_40 (B1), DaddyDaniels_40 (B1), Daffy_40 (B1), Dati_40 (B1), Deenasa_40 (B3), DelRivs_39 (B1), Devonte_40 (B3), Dice_41 (B1), DigitDog_39 (B5), Dingo_40 (B1), DirtJuice_40 (B1), Doddsville_40 (B1), Donny_39 (B5), DuchessDung_38 (B1), Duggie_39 (B1), Durga_40 (B1), EastView9101_39 (B5), Emiris_40 (B1), EmpTee_40 (B1), Fang_40 (B1), Fozzie_39 (B1), Frankicide_40 (B1), Frederick_37 (B4), Freya_39 (B1), Fringe_40 (B1), Funsized_42 (B9), Gadget_41 (B3), Gervas_40 (B3), Giraffe_40 (B1), GlenHope_41 (B3), Gophee_40 (B1), Haimas_40 (B1), Haleema_39 (B1), Halfpint_39 (B3), Hamish_40 (B1), Harvey_40 (B1), Heath_36 (B4), Held_40 (B1), HenryJackson_39 (B1), Hetaeria_40 (B1), Horchata_40 (B1), Hosp_032 (B6), Hydro_37 (B4), ImtiyazSitla_39 (B1), Imvubu_33 (B10), Inchworm_40 (B1), Indlovu_38 (B11), Iridoclysis_40 (B1), IsaacEli_40 (B1), JAMaL_37 (B4), JDog_40 (B1), Jackstina_37 (B3), JaguarMi_37 (B4), JakeO_39 (B1), Jiminy_39 (B1), Jolie1_034 (B6), Kahve_39 (B1), Kailash_40

(B1), Kamiyu_40 (B3), Katniss_40 (B1), KayaCho_34 (B6), Keitherie_40 (B1), Kikipoo_40 (B1), KingTut_31 (B1), KingVeVeVe_40 (B1), KlimbOn_40 (B1), Kloppinator_40 (B1), Kwksand96_39 (B1), LasagnaCat_40 (B1), Lasso_40 (B1), Legolas_39 (B1), LeiMonet_40 (B1), LemonSlice_40 (B1), LestyG_40 (B3), LilMcDreamy_36 (B12), Longacauda_39 (B1), Lopsy_39 (B1), LostAndPhound_39 (B1), Lulwa_40 (B1), MRabcd_39 (B1), Mag7_39 (B1), Marley1013_40 (B3), Maru_39 (B1), Maskar_39 (B1), Mcshane_39 (B1), Mecca_39 (B1), Megatron_40 (B1), Melc17_40 (B1), MelsMeow_39 (B1), Mikota_40 (B1), MiniBoss_40 (B1), Mithril_37 (B4), Morgushi_40 (B1), Mortcellus_39 (B3), Morty007_40 (B3), Morty_40 (B1), MrPhizzler_39 (B1), Mudslide_37 (B4), Mulan_39 (B1), Murdoc_40 (B1), Mysterious_41 (B5), Nanao_36 (B4), Nangang_39 (B5), Neos5_40 (B3), Newman_40 (B1), Nigel_35 (B4), Nozo_40 (B3), Nyala_39 (B1), OSmaximus_40 (B1), Obutu_40 (B3), Oline_39 (B1), OliverWalter_40 (B1), Omniscient_40 (B1), Oosterbaan_40 (B1), Orfeu_39 (B1), Orion_40 (B1), PG1_40 (B1), Pacifista_41 (B1), PenguinLover67_42 (B9), Phaedrus_38 (B3), Phantasmagoria_41 (B2), Phareon_40 (B1), PhatLouie_40 (B1), Phayeta_41 (B3), Phelemich_39 (B5), PhenghisKhan_39 (B1), Pherdinand_40 (B1), Phergie_39 (B1), Philly_39 (B3), Phipps_40 (B1), Phlyer_40 (B3), PhrankReynolds_39 (B1), PhrodoBaggins_39 (B1), Phunky_40 (B1), PinheadLarry_40 (B1), Pinkman_39 (B1), Podrick_40 (B1), Pops_40 (B1), Poster_36 (B4), Potter_39 (B1), Prickles_40 (B1), Prince_38 (B4), ProfessorX_40 (B1), Puhltonio_40 (B1), Quisquiliae_40 (B1), RagingRooster_40 (B3), RawrgerThat_37 (B4), RedMaple_39 (B1), Rich_38 (B5), Ricotta_40 (B1), Robyn_39 (B1), SDcharge11_40 (B1), Saguario_41 (B7), Samaymay_40 (B1), Schadenfreude_39 (B1), Schueller_40 (B1), Scoot17C_40 (B1), Scrick_40 (B1), Serendipitous_38 (B5), Serendipity_40 (B1), Sheila_40 (B1), Simielle_39 (B1), SirJeffery_39 (B5), Skippy_40 (B1), Slatt_40 (B1), SlippinJimmy_40 (B3), Soile_40 (B1), Solosis_39 (B1), Soto_40 (B1), Squiggle_40 (B1), StinkyVeggy_41 (B5), Struggle_39 (B1), Suffolk_40 (B1), Suigeneris_39 (B5), Swiphy_41 (B1), SynergyX_40 (B3), TallGrassMM_40 (B1), Thonko_39 (B8), Thora_40 (B1), Tomlarah_40 (B1), Toni_39 (B1), Tooj_40 (B1), True_39 (B1), Trypo_40 (B1), Tydolla_40 (B3), UncleHowie_40 (B1), Usavi_40 (B1), Vaishali24_39 (B1), Valjean_40 (B1), Veritas_39 (B1), Vincenzo_38 (B4), VioletZ_37 (B4), Virapocalypse_40 (B1), Virgeve_39 (B1), Vortex_40 (B1), Waleliano_37 (B4), Weher20_40 (B1), West99_41 (B2), Windsor_39 (B1), Xavier_39 (B1), Yahalom_40 (B3), Yinz_40 (B3), Yoshand_40 (B1), Zelda_40 (B1), Zemanar_38 (B4), Zenteno07_44 (B13), Zonia_40 (B1),

Start 9:

- Found in 4 of 442 (0.9%) of genes in pham
- Manual Annotations of this start: 1 of 388
- Called 25.0% of time when present
- Phage (with cluster) where this start called: AlanGrant_38 (B4),

Start 10:

- Found in 2 of 442 (0.5%) of genes in pham
- No Manual Annotations of this start.
- Called 50.0% of time when present
- Phage (with cluster) where this start called: Hashim76_44 (B13),

Start 11:

- Found in 43 of 442 (9.7%) of genes in pham
- No Manual Annotations of this start.
- Called 4.7% of time when present
- Phage (with cluster) where this start called: Fresco_33 (DR), Shatter_33 (DR),

Start 12:

- Found in 10 of 442 (2.3%) of genes in pham
- Manual Annotations of this start: 2 of 388
- Called 50.0% of time when present
- Phage (with cluster) where this start called: Clawz_55 (CP), DonTron_55 (CP), Soos_51 (CP), Sting_55 (CP), Tonitrus_43 (singleton),

Start 16:

- Found in 373 of 442 (84.4%) of genes in pham
- Manual Annotations of this start: 8 of 388
- Called 2.1% of time when present
- Phage (with cluster) where this start called: Argie_36 (W), Cepens_35 (W), D12_34 (W), GodPhather_36 (W), Jeon_35 (W), Megabear_35 (W), PR_35 (W), Taptic_35 (W),

Start 21:

- Found in 371 of 442 (83.9%) of genes in pham
- Manual Annotations of this start: 15 of 388
- Called 4.3% of time when present
- Phage (with cluster) where this start called: Abinghost_40 (B3), Akoma_40 (B3), Ben11_39 (B3), Briakila_41 (B3), Casbah_39 (B3), ChaChing_40 (B3), Chandler_40 (B3), Corofin_40 (B3), Daisy_40 (B3), HarveySr_40 (B3), Heathcliff_40 (B3), Kronus_39 (B3), MmasiCarm_40 (B3), OrangeOswald_40 (B3), Rita1961_40 (B3), RomaT_40 (B3),

Summary by clusters:

There are 17 clusters represented in this pham: singleton, W, B10, B8, B11, B4, B5, B6, B7, B12, B1, B2, B3, CP, DR, B9, B13,

Info for manual annotations of cluster B1:

- Start number 6 was manually annotated 89 times for cluster B1.
- Start number 7 was manually annotated 156 times for cluster B1.

Info for manual annotations of cluster B10:

- Start number 7 was manually annotated 1 time for cluster B10.

Info for manual annotations of cluster B11:

- Start number 7 was manually annotated 1 time for cluster B11.

Info for manual annotations of cluster B12:

- Start number 7 was manually annotated 1 time for cluster B12.

Info for manual annotations of cluster B13:

- Start number 6 was manually annotated 1 time for cluster B13.
- Start number 7 was manually annotated 1 time for cluster B13.

Info for manual annotations of cluster B2:

- Start number 4 was manually annotated 26 times for cluster B2.
- Start number 6 was manually annotated 1 time for cluster B2.
- Start number 7 was manually annotated 5 times for cluster B2.

Info for manual annotations of cluster B3:

- Start number 7 was manually annotated 28 times for cluster B3.
- Start number 21 was manually annotated 15 times for cluster B3.

Info for manual annotations of cluster B4:

- Start number 6 was manually annotated 5 times for cluster B4.
- Start number 7 was manually annotated 16 times for cluster B4.
- Start number 9 was manually annotated 1 time for cluster B4.

Info for manual annotations of cluster B5:

- Start number 6 was manually annotated 1 time for cluster B5.
- Start number 7 was manually annotated 7 times for cluster B5.

Info for manual annotations of cluster B6:

- Start number 7 was manually annotated 1 time for cluster B6.

Info for manual annotations of cluster B7:

- Start number 7 was manually annotated 1 time for cluster B7.

Info for manual annotations of cluster B8:

- Start number 7 was manually annotated 1 time for cluster B8.

Info for manual annotations of cluster B9:

- Start number 6 was manually annotated 2 times for cluster B9.
- Start number 7 was manually annotated 3 times for cluster B9.

Info for manual annotations of cluster CP:

- Start number 12 was manually annotated 2 times for cluster CP.

Info for manual annotations of cluster DR:

- Start number 5 was manually annotated 15 times for cluster DR.

Info for manual annotations of cluster W:

- Start number 16 was manually annotated 8 times for cluster W.

Gene Information:

Gene: 39HC_034 Start: 34919, Stop: 35236, Start Num: 6

Candidate Starts for 39HC_034:

(Start: 6 @34919 has 99 MA's), (Start: 7 @34922 has 222 MA's), (Start: 16 @34985 has 8 MA's), (18, 34994), (19, 35003), (Start: 21 @35012 has 15 MA's), (24, 35024), (46, 35138), (52, 35159), (55, 35192),

Gene: 40BC_034 Start: 34919, Stop: 35236, Start Num: 6

Candidate Starts for 40BC_034:

(Start: 6 @34919 has 99 MA's), (Start: 7 @34922 has 222 MA's), (Start: 16 @34985 has 8 MA's), (18, 34994), (19, 35003), (Start: 21 @35012 has 15 MA's), (24, 35024), (46, 35138), (52, 35159), (55, 35192),

Gene: ABU_40 Start: 36604, Stop: 36915, Start Num: 7

Candidate Starts for ABU_40:

(Start: 6 @36601 has 99 MA's), (Start: 7 @36604 has 222 MA's), (Start: 16 @36667 has 8 MA's), (19, 36682), (Start: 21 @36691 has 15 MA's), (22, 36694), (30, 36730), (46, 36817), (62, 36907),

Gene: Abinghost_40 Start: 37346, Stop: 37582, Start Num: 21

Candidate Starts for Abinghost_40:

(2, 36971), (Start: 21 @37346 has 15 MA's), (47, 37469), (52, 37490), (58, 37550), (61, 37559),

Gene: AbsoluteMadLad_39 Start: 36610, Stop: 36924, Start Num: 6

Candidate Starts for AbsoluteMadLad_39:

(Start: 6 @36610 has 99 MA's), (Start: 7 @36613 has 222 MA's), (Start: 16 @36676 has 8 MA's), (19, 36691), (Start: 21 @36700 has 15 MA's), (22, 36703), (30, 36739), (46, 36826), (62, 36916),

Gene: Acadian_39 Start: 37200, Stop: 37520, Start Num: 7

Candidate Starts for Acadian_39:

(Start: 6 @37197 has 99 MA's), (Start: 7 @37200 has 222 MA's), (Start: 16 @37263 has 8 MA's), (18, 37269), (19, 37278), (Start: 21 @37287 has 15 MA's), (23, 37296), (26, 37308), (58, 37491),

Gene: Adriana_40 Start: 36602, Stop: 36913, Start Num: 7

Candidate Starts for Adriana_40:

(Start: 6 @36599 has 99 MA's), (Start: 7 @36602 has 222 MA's), (Start: 16 @36665 has 8 MA's), (19, 36680), (Start: 21 @36689 has 15 MA's), (22, 36692), (30, 36728), (46, 36815), (62, 36905),

Gene: Aelin_39 Start: 36165, Stop: 36479, Start Num: 6

Candidate Starts for Aelin_39:

(Start: 6 @36165 has 99 MA's), (Start: 7 @36168 has 222 MA's), (Start: 16 @36231 has 8 MA's), (19, 36246), (Start: 21 @36255 has 15 MA's), (22, 36258), (30, 36294), (46, 36381), (62, 36471),

Gene: Akoma_40 Start: 37350, Stop: 37586, Start Num: 21

Candidate Starts for Akoma_40:

(2, 36975), (Start: 21 @37350 has 15 MA's), (47, 37473), (52, 37494), (58, 37554), (61, 37563),

Gene: AlanGrant_38 Start: 37675, Stop: 37962, Start Num: 9

Candidate Starts for AlanGrant_38:

(Start: 6 @37648 has 99 MA's), (Start: 7 @37651 has 222 MA's), (Start: 9 @37675 has 1 MA's), (Start: 16 @37714 has 8 MA's), (19, 37729), (20, 37735), (Start: 21 @37738 has 15 MA's), (24, 37750), (26, 37759), (30, 37777), (37, 37816), (52, 37885), (55, 37918),

Gene: Allegro_41 Start: 37726, Stop: 38091, Start Num: 4

Candidate Starts for Allegro_41:

(Start: 4 @37726 has 26 MA's), (Start: 6 @37768 has 99 MA's), (Start: 7 @37771 has 222 MA's), (11, 37807), (Start: 16 @37834 has 8 MA's), (19, 37849), (24, 37870), (32, 37909), (54, 38032), (55, 38044), (60, 38074),

Gene: AltPhacts_40 Start: 36591, Stop: 36902, Start Num: 7

Candidate Starts for AltPhacts_40:

(Start: 6 @36588 has 99 MA's), (Start: 7 @36591 has 222 MA's), (Start: 16 @36654 has 8 MA's), (19, 36669), (Start: 21 @36678 has 15 MA's), (22, 36681), (30, 36717), (46, 36804), (62, 36894),

Gene: Altwerkus_39 Start: 36289, Stop: 36603, Start Num: 6

Candidate Starts for Altwerkus_39:

(Start: 6 @36289 has 99 MA's), (Start: 7 @36292 has 222 MA's), (Start: 16 @36355 has 8 MA's), (19, 36370), (Start: 21 @36379 has 15 MA's), (22, 36382), (30, 36418), (46, 36505), (62, 36595),

Gene: AnClar_34 Start: 32553, Stop: 32864, Start Num: 5

Candidate Starts for AnClar_34:

(3, 32346), (Start: 5 @32553 has 15 MA's), (27, 32685), (28, 32688), (55, 32823),

Gene: AnarQue_35 Start: 31659, Stop: 31973, Start Num: 5

Candidate Starts for AnarQue_35:

(Start: 5 @31659 has 15 MA's), (Start: 12 @31719 has 2 MA's), (27, 31791), (28, 31794), (29, 31803), (44, 31875), (55, 31932),

Gene: Anderson_40 Start: 36597, Stop: 36908, Start Num: 7

Candidate Starts for Anderson_40:

(Start: 6 @36594 has 99 MA's), (Start: 7 @36597 has 222 MA's), (Start: 16 @36660 has 8 MA's), (19, 36675), (Start: 21 @36684 has 15 MA's), (22, 36687), (30, 36723), (46, 36810), (62, 36900),

Gene: Andre_40 Start: 36596, Stop: 36907, Start Num: 7

Candidate Starts for Andre_40:

(Start: 6 @36593 has 99 MA's), (Start: 7 @36596 has 222 MA's), (Start: 16 @36659 has 8 MA's), (19, 36674), (Start: 21 @36683 has 15 MA's), (22, 36686), (30, 36722), (46, 36809), (62, 36899),

Gene: Antonia_39 Start: 36165, Stop: 36479, Start Num: 6

Candidate Starts for Antonia_39:

(Start: 6 @36165 has 99 MA's), (Start: 7 @36168 has 222 MA's), (Start: 16 @36231 has 8 MA's), (19, 36246), (Start: 21 @36255 has 15 MA's), (22, 36258), (30, 36294), (46, 36381), (62, 36471),

Gene: Apex_37 Start: 37106, Stop: 37417, Start Num: 7

Candidate Starts for Apex_37:

(Start: 6 @37103 has 99 MA's), (Start: 7 @37106 has 222 MA's), (Start: 16 @37169 has 8 MA's), (19, 37184), (20, 37190), (Start: 21 @37193 has 15 MA's), (24, 37205), (30, 37232), (37, 37271), (45, 37316), (46, 37319), (55, 37373), (58, 37397),

Gene: Apizium_39 Start: 36360, Stop: 36671, Start Num: 7

Candidate Starts for Apizium_39:

(Start: 6 @36357 has 99 MA's), (Start: 7 @36360 has 222 MA's), (Start: 16 @36423 has 8 MA's), (19, 36438), (Start: 21 @36447 has 15 MA's), (22, 36450), (30, 36486), (46, 36573), (62, 36663),

Gene: Arbiter_40 Start: 37812, Stop: 38177, Start Num: 4

Candidate Starts for Arbiter_40:

(Start: 4 @37812 has 26 MA's), (Start: 6 @37854 has 99 MA's), (Start: 7 @37857 has 222 MA's), (11, 37893), (Start: 16 @37920 has 8 MA's), (19, 37935), (24, 37956), (32, 37995), (54, 38118), (55, 38130), (60, 38160),

Gene: Ares_41 Start: 37796, Stop: 38161, Start Num: 4

Candidate Starts for Ares_41:

(Start: 4 @37796 has 26 MA's), (Start: 6 @37838 has 99 MA's), (Start: 7 @37841 has 222 MA's), (11, 37877), (Start: 16 @37904 has 8 MA's), (19, 37919), (24, 37940), (32, 37979), (54, 38102), (55, 38114), (60, 38144),

Gene: Argie_36 Start: 36020, Stop: 36304, Start Num: 16

Candidate Starts for Argie_36:

(Start: 16 @36020 has 8 MA's), (26, 36068), (35, 36119), (38, 36134), (41, 36170), (51, 36203), (55, 36245), (61, 36278),

Gene: Ashraf_39 Start: 36164, Stop: 36475, Start Num: 7

Candidate Starts for Ashraf_39:

(Start: 6 @36161 has 99 MA's), (Start: 7 @36164 has 222 MA's), (Start: 16 @36227 has 8 MA's), (19, 36242), (Start: 21 @36251 has 15 MA's), (30, 36290), (46, 36377),

Gene: Athena_41 Start: 38010, Stop: 38333, Start Num: 7

Candidate Starts for Athena_41:

(2, 37722), (Start: 7 @38010 has 222 MA's), (Start: 21 @38097 has 15 MA's), (47, 38220), (52, 38241), (58, 38301), (61, 38310),

Gene: Audrey_40 Start: 37259, Stop: 37582, Start Num: 7

Candidate Starts for Audrey_40:

(2, 36971), (Start: 7 @37259 has 222 MA's), (Start: 21 @37346 has 15 MA's), (47, 37469), (52, 37490), (58, 37550), (61, 37559),

Gene: Austelle_38 Start: 37562, Stop: 37873, Start Num: 7

Candidate Starts for Austelle_38:

(Start: 6 @37559 has 99 MA's), (Start: 7 @37562 has 222 MA's), (Start: 16 @37625 has 8 MA's), (19, 37640), (20, 37646), (Start: 21 @37649 has 15 MA's), (24, 37661), (30, 37688), (37, 37727), (45, 37772), (46, 37775), (55, 37829), (58, 37853),

Gene: Axumite_33 Start: 29709, Stop: 30020, Start Num: 5

Candidate Starts for Axumite_33:

(Start: 5 @29709 has 15 MA's), (11, 29763), (27, 29841), (28, 29844), (55, 29979),

Gene: Badfish_40 Start: 36627, Stop: 36938, Start Num: 7

Candidate Starts for Badfish_40:

(Start: 6 @36624 has 99 MA's), (Start: 7 @36627 has 222 MA's), (Start: 16 @36690 has 8 MA's), (19, 36705), (Start: 21 @36714 has 15 MA's), (22, 36717), (30, 36753), (46, 36840), (62, 36930),

Gene: Bae_38 Start: 37127, Stop: 37447, Start Num: 7

Candidate Starts for Bae_38:

(Start: 6 @37124 has 99 MA's), (Start: 7 @37127 has 222 MA's), (Start: 16 @37190 has 8 MA's), (18, 37196), (19, 37205), (Start: 21 @37214 has 15 MA's), (23, 37223), (26, 37235), (58, 37418),

Gene: Baloo_40 Start: 37262, Stop: 37585, Start Num: 7

Candidate Starts for Baloo_40:

(2, 36974), (Start: 7 @37262 has 222 MA's), (Start: 21 @37349 has 15 MA's), (47, 37472), (52, 37493), (58, 37553), (61, 37562),

Gene: Bananafish_41 Start: 37732, Stop: 38097, Start Num: 4

Candidate Starts for Bananafish_41:

(Start: 4 @37732 has 26 MA's), (Start: 6 @37774 has 99 MA's), (Start: 7 @37777 has 222 MA's), (11, 37813), (Start: 16 @37840 has 8 MA's), (19, 37855), (24, 37876), (32, 37915), (54, 38038), (55, 38050), (60, 38080),

Gene: Banjo_39 Start: 36302, Stop: 36613, Start Num: 7

Candidate Starts for Banjo_39:

(Start: 6 @36299 has 99 MA's), (Start: 7 @36302 has 222 MA's), (Start: 16 @36365 has 8 MA's), (19, 36380), (Start: 21 @36389 has 15 MA's), (22, 36392), (30, 36428), (46, 36515), (62, 36605),

Gene: Basato_41 Start: 36881, Stop: 37192, Start Num: 7

Candidate Starts for Basato_41:

(Start: 6 @36878 has 99 MA's), (Start: 7 @36881 has 222 MA's), (Start: 16 @36944 has 8 MA's), (19, 36959), (Start: 21 @36968 has 15 MA's), (22, 36971), (30, 37007), (46, 37094), (62, 37184),

Gene: BatteryCK_39 Start: 36221, Stop: 36532, Start Num: 7

Candidate Starts for BatteryCK_39:

(Start: 6 @36218 has 99 MA's), (Start: 7 @36221 has 222 MA's), (Start: 16 @36284 has 8 MA's), (19, 36299), (Start: 21 @36308 has 15 MA's), (22, 36311), (30, 36347), (46, 36434), (62, 36524),

Gene: Beaglebox_39 Start: 36323, Stop: 36634, Start Num: 7

Candidate Starts for Beaglebox_39:

(Start: 6 @36320 has 99 MA's), (Start: 7 @36323 has 222 MA's), (Start: 16 @36386 has 8 MA's), (19, 36401), (Start: 21 @36410 has 15 MA's), (22, 36413), (30, 36449), (46, 36536), (62, 36626),

Gene: Ben11_39 Start: 37168, Stop: 37404, Start Num: 21

Candidate Starts for Ben11_39:

(2, 36793), (Start: 21 @37168 has 15 MA's), (47, 37291), (52, 37312), (58, 37372), (61, 37381),

Gene: Bernardo_41 Start: 37807, Stop: 38130, Start Num: 7

Candidate Starts for Bernardo_41:

(2, 37519), (Start: 7 @37807 has 222 MA's), (Start: 21 @37894 has 15 MA's), (47, 38017), (52, 38038), (58, 38098), (61, 38107),

Gene: BiggityBass_33 Start: 31960, Stop: 32271, Start Num: 5

Candidate Starts for BiggityBass_33:

(Start: 5 @31960 has 15 MA's), (Start: 16 @32041 has 8 MA's), (27, 32092), (28, 32095), (55, 32230),

Gene: BirdsNest_42 Start: 35554, Stop: 35868, Start Num: 6

Candidate Starts for BirdsNest_42:

(Start: 6 @35554 has 99 MA's), (Start: 7 @35557 has 222 MA's), (Start: 16 @35620 has 8 MA's), (19, 35635), (23, 35653), (62, 35860),

Gene: Bishoperium_39 Start: 36311, Stop: 36622, Start Num: 7

Candidate Starts for Bishoperium_39:

(Start: 6 @36308 has 99 MA's), (Start: 7 @36311 has 222 MA's), (Start: 16 @36374 has 8 MA's), (19, 36389), (Start: 21 @36398 has 15 MA's), (22, 36401), (30, 36437), (46, 36524), (62, 36614),

Gene: BlackStallion_40 Start: 36613, Stop: 36924, Start Num: 7

Candidate Starts for BlackStallion_40:

(Start: 6 @36610 has 99 MA's), (Start: 7 @36613 has 222 MA's), (Start: 16 @36676 has 8 MA's), (19, 36691), (Start: 21 @36700 has 15 MA's), (22, 36703), (30, 36739), (46, 36826), (62, 36916),

Gene: Blocker23_41 Start: 37895, Stop: 38215, Start Num: 7

Candidate Starts for Blocker23_41:

(Start: 4 @37850 has 26 MA's), (Start: 6 @37892 has 99 MA's), (Start: 7 @37895 has 222 MA's), (11, 37931), (Start: 16 @37958 has 8 MA's), (19, 37973), (24, 37994), (32, 38033), (54, 38156), (55, 38168), (60, 38198),

Gene: BlueHusk_40 Start: 36110, Stop: 36421, Start Num: 7

Candidate Starts for BlueHusk_40:

(Start: 6 @36107 has 99 MA's), (Start: 7 @36110 has 222 MA's), (Start: 16 @36173 has 8 MA's), (19, 36188), (Start: 21 @36197 has 15 MA's), (22, 36200), (30, 36236), (46, 36323), (62, 36413),

Gene: Bluephacebaby_39 Start: 36308, Stop: 36619, Start Num: 7

Candidate Starts for Bluephacebaby_39:

(Start: 6 @36305 has 99 MA's), (Start: 7 @36308 has 222 MA's), (Start: 16 @36371 has 8 MA's), (19, 36386), (Start: 21 @36395 has 15 MA's), (22, 36398), (30, 36434), (46, 36521), (62, 36611),

Gene: BobbyK_37 Start: 36931, Stop: 37242, Start Num: 7

Candidate Starts for BobbyK_37:

(Start: 6 @36928 has 99 MA's), (Start: 7 @36931 has 222 MA's), (Start: 16 @36994 has 8 MA's), (19, 37009), (20, 37015), (Start: 21 @37018 has 15 MA's), (24, 37030), (30, 37057), (37, 37096), (45, 37141), (46, 37144), (52, 37165), (55, 37198), (58, 37222),

Gene: Boehler_40 Start: 36614, Stop: 36925, Start Num: 7

Candidate Starts for Boehler_40:

(Start: 6 @36611 has 99 MA's), (Start: 7 @36614 has 222 MA's), (Start: 16 @36677 has 8 MA's), (19, 36692), (Start: 21 @36701 has 15 MA's), (22, 36704), (30, 36740), (46, 36827), (62, 36917),

Gene: Boyle_41 Start: 37896, Stop: 38216, Start Num: 7

Candidate Starts for Boyle_41:

(Start: 4 @37851 has 26 MA's), (Start: 6 @37893 has 99 MA's), (Start: 7 @37896 has 222 MA's), (11, 37932), (Start: 16 @37959 has 8 MA's), (19, 37974), (24, 37995), (32, 38034), (54, 38157), (55, 38169), (60, 38199),

Gene: Briakila_41 Start: 38116, Stop: 38352, Start Num: 21

Candidate Starts for Briakila_41:

(2, 37741), (Start: 21 @38116 has 15 MA's), (47, 38239), (52, 38260), (58, 38320), (61, 38329),

Gene: Brilliant_40 Start: 36319, Stop: 36630, Start Num: 7

Candidate Starts for Brilliant_40:

(Start: 6 @36316 has 99 MA's), (Start: 7 @36319 has 222 MA's), (Start: 16 @36382 has 8 MA's), (19, 36397), (Start: 21 @36406 has 15 MA's), (30, 36445), (46, 36532), (62, 36622),

Gene: BrownCNA_38 Start: 37192, Stop: 37503, Start Num: 7

Candidate Starts for BrownCNA_38:

(Start: 6 @37189 has 99 MA's), (Start: 7 @37192 has 222 MA's), (Start: 16 @37255 has 8 MA's), (19, 37270), (20, 37276), (Start: 21 @37279 has 15 MA's), (24, 37291), (30, 37318), (37, 37357), (45, 37402), (46, 37405), (55, 37459), (58, 37483),

Gene: Brownie5_41 Start: 37857, Stop: 38222, Start Num: 4

Candidate Starts for Brownie5_41:

(Start: 4 @37857 has 26 MA's), (Start: 6 @37899 has 99 MA's), (Start: 7 @37902 has 222 MA's), (11, 37938), (Start: 16 @37965 has 8 MA's), (19, 37980), (24, 38001), (32, 38040), (54, 38163), (55, 38175), (60, 38205),

Gene: Buckeye_40 Start: 36628, Stop: 36942, Start Num: 6

Candidate Starts for Buckeye_40:

(Start: 6 @36628 has 99 MA's), (Start: 7 @36631 has 222 MA's), (Start: 16 @36694 has 8 MA's), (19, 36709), (Start: 21 @36718 has 15 MA's), (22, 36721), (30, 36757), (46, 36844), (62, 36934),

Gene: Burr_39 Start: 36308, Stop: 36619, Start Num: 7

Candidate Starts for Burr_39:

(Start: 6 @36305 has 99 MA's), (Start: 7 @36308 has 222 MA's), (Start: 16 @36371 has 8 MA's), (19, 36386), (Start: 21 @36395 has 15 MA's), (22, 36398), (30, 36434), (46, 36521), (62, 36611),

Gene: CRB2_42 Start: 39392, Stop: 39706, Start Num: 7

Candidate Starts for CRB2_42:

(Start: 6 @39389 has 99 MA's), (Start: 7 @39392 has 222 MA's), (13, 39443), (Start: 16 @39455 has 8 MA's), (18, 39464), (19, 39473), (22, 39485), (52, 39629), (58, 39686),

Gene: CaiB_35 Start: 31645, Stop: 31959, Start Num: 5

Candidate Starts for CaiB_35:

(Start: 5 @31645 has 15 MA's), (Start: 12 @31705 has 2 MA's), (27, 31777), (28, 31780), (29, 31789), (44, 31861), (55, 31918),

Gene: Calamitous_41 Start: 37782, Stop: 38102, Start Num: 7

Candidate Starts for Calamitous_41:

(Start: 4 @37737 has 26 MA's), (Start: 6 @37779 has 99 MA's), (Start: 7 @37782 has 222 MA's), (11, 37818), (Start: 16 @37845 has 8 MA's), (19, 37860), (24, 37881), (32, 37920), (54, 38043), (55, 38055), (60, 38085),

Gene: CamL_40 Start: 36606, Stop: 36920, Start Num: 6

Candidate Starts for CamL_40:

(Start: 6 @36606 has 99 MA's), (Start: 7 @36609 has 222 MA's), (Start: 16 @36672 has 8 MA's), (19, 36687), (Start: 21 @36696 has 15 MA's), (22, 36699), (30, 36735), (46, 36822), (62, 36912),

Gene: CampRoach_39 Start: 36599, Stop: 36910, Start Num: 7

Candidate Starts for CampRoach_39:

(Start: 6 @36596 has 99 MA's), (Start: 7 @36599 has 222 MA's), (Start: 16 @36662 has 8 MA's), (19, 36677), (Start: 21 @36686 has 15 MA's), (22, 36689), (30, 36725), (46, 36812), (62, 36902),

Gene: Cannibal_40 Start: 36589, Stop: 36903, Start Num: 6

Candidate Starts for Cannibal_40:

(Start: 6 @36589 has 99 MA's), (Start: 7 @36592 has 222 MA's), (Start: 16 @36655 has 8 MA's), (19, 36670), (Start: 21 @36679 has 15 MA's), (22, 36682), (30, 36718), (46, 36805), (62, 36895),

Gene: Carthage_38 Start: 35521, Stop: 35832, Start Num: 7

Candidate Starts for Carthage_38:

(Start: 6 @35518 has 99 MA's), (Start: 7 @35521 has 222 MA's), (Start: 16 @35584 has 8 MA's), (19, 35599), (Start: 21 @35608 has 15 MA's), (22, 35611), (30, 35647), (46, 35734), (62, 35824),

Gene: Casbah_39 Start: 37198, Stop: 37434, Start Num: 21

Candidate Starts for Casbah_39:

(2, 36823), (Start: 21 @37198 has 15 MA's), (47, 37321), (52, 37342), (58, 37402), (61, 37411),

Gene: Cepens_35 Start: 35735, Stop: 36019, Start Num: 16

Candidate Starts for Cepens_35:

(Start: 16 @35735 has 8 MA's), (26, 35783), (35, 35834), (38, 35849), (39, 35855), (41, 35885), (51, 35918), (55, 35960), (61, 35993),

Gene: ChaChing_40 Start: 37361, Stop: 37597, Start Num: 21

Candidate Starts for ChaChing_40:

(2, 36986), (Start: 21 @37361 has 15 MA's), (47, 37484), (52, 37505), (58, 37565), (61, 37574),

Gene: Chaelin_40 Start: 36306, Stop: 36617, Start Num: 7

Candidate Starts for Chaelin_40:

(Start: 6 @36303 has 99 MA's), (Start: 7 @36306 has 222 MA's), (Start: 16 @36369 has 8 MA's), (19, 36384), (Start: 21 @36393 has 15 MA's), (22, 36396), (30, 36432), (46, 36519), (62, 36609),

Gene: Chah_41 Start: 36626, Stop: 36937, Start Num: 7

Candidate Starts for Chah_41:

(Start: 6 @36623 has 99 MA's), (Start: 7 @36626 has 222 MA's), (Start: 16 @36689 has 8 MA's), (19, 36704), (Start: 21 @36713 has 15 MA's), (22, 36716), (30, 36752), (46, 36839), (62, 36929),

Gene: Chandler_40 Start: 38129, Stop: 38365, Start Num: 21

Candidate Starts for Chandler_40:

(2, 37754), (Start: 21 @38129 has 15 MA's), (47, 38252), (52, 38273), (58, 38333), (61, 38342),

Gene: Charles1_40 Start: 36594, Stop: 36905, Start Num: 7

Candidate Starts for Charles1_40:

(Start: 6 @36591 has 99 MA's), (Start: 7 @36594 has 222 MA's), (Start: 16 @36657 has 8 MA's), (19, 36672), (Start: 21 @36681 has 15 MA's), (22, 36684), (30, 36720), (46, 36807), (62, 36897),

Gene: CharlieGBrown_39 Start: 36181, Stop: 36495, Start Num: 6

Candidate Starts for CharlieGBrown_39:

(Start: 6 @36181 has 99 MA's), (Start: 7 @36184 has 222 MA's), (Start: 16 @36247 has 8 MA's), (19, 36262), (Start: 21 @36271 has 15 MA's), (30, 36310), (46, 36397),

Gene: CharlottesWeb_33 Start: 29653, Stop: 29964, Start Num: 5

Candidate Starts for CharlottesWeb_33:

(Start: 5 @29653 has 15 MA's), (11, 29707), (27, 29785), (48, 29872), (55, 29923),

Gene: CheetO_40 Start: 36605, Stop: 36919, Start Num: 6

Candidate Starts for CheetO_40:

(Start: 6 @36605 has 99 MA's), (Start: 7 @36608 has 222 MA's), (Start: 16 @36671 has 8 MA's), (19, 36686), (Start: 21 @36695 has 15 MA's), (22, 36698), (30, 36734), (46, 36821), (62, 36911),

Gene: Cher_39 Start: 36328, Stop: 36642, Start Num: 6

Candidate Starts for Cher_39:

(Start: 6 @36328 has 99 MA's), (Start: 7 @36331 has 222 MA's), (Start: 16 @36394 has 8 MA's), (19, 36409), (Start: 21 @36418 has 15 MA's), (22, 36421), (30, 36457), (46, 36544), (62, 36634),

Gene: Childish_39 Start: 36334, Stop: 36645, Start Num: 7

Candidate Starts for Childish_39:

(Start: 6 @36331 has 99 MA's), (Start: 7 @36334 has 222 MA's), (Start: 16 @36397 has 8 MA's), (19, 36412), (Start: 21 @36421 has 15 MA's), (22, 36424), (30, 36460), (46, 36547), (62, 36637),

Gene: Chorkpop_40 Start: 36330, Stop: 36641, Start Num: 7

Candidate Starts for Chorkpop_40:

(Start: 6 @36327 has 99 MA's), (Start: 7 @36330 has 222 MA's), (Start: 16 @36393 has 8 MA's), (19, 36408), (Start: 21 @36417 has 15 MA's), (22, 36420), (30, 36456), (46, 36543), (62, 36633),

Gene: ChrisnMich_36 Start: 35892, Stop: 36203, Start Num: 7

Candidate Starts for ChrisnMich_36:

(Start: 6 @35889 has 99 MA's), (Start: 7 @35892 has 222 MA's), (Start: 16 @35955 has 8 MA's), (19, 35970), (20, 35976), (Start: 21 @35979 has 15 MA's), (24, 35991), (30, 36018), (37, 36057), (45, 36102), (46, 36105), (52, 36126), (55, 36159),

Gene: Chunky_40 Start: 36614, Stop: 36928, Start Num: 6

Candidate Starts for Chunky_40:

(Start: 6 @36614 has 99 MA's), (Start: 7 @36617 has 222 MA's), (Start: 16 @36680 has 8 MA's), (19, 36695), (Start: 21 @36704 has 15 MA's), (22, 36707), (30, 36743), (46, 36830), (62, 36920),

Gene: Chute_39 Start: 36655, Stop: 36966, Start Num: 7

Candidate Starts for Chute_39:

(Start: 6 @36652 has 99 MA's), (Start: 7 @36655 has 222 MA's), (Start: 16 @36718 has 8 MA's), (19, 36733), (Start: 21 @36742 has 15 MA's), (22, 36745), (30, 36781), (46, 36868), (62, 36958),

Gene: Clawz_55 Start: 30520, Stop: 30741, Start Num: 12

Candidate Starts for Clawz_55:

(Start: 12 @30520 has 2 MA's), (23, 30577), (26, 30589), (29, 30604), (53, 30682), (56, 30712), (58, 30733),

Gene: CloverMinnie_35 Start: 31585, Stop: 31899, Start Num: 5

Candidate Starts for CloverMinnie_35:

(Start: 5 @31585 has 15 MA's), (Start: 12 @31645 has 2 MA's), (27, 31717), (28, 31720), (29, 31729), (44, 31801), (55, 31858),

Gene: Cobra_40 Start: 36612, Stop: 36926, Start Num: 6

Candidate Starts for Cobra_40:

(Start: 6 @36612 has 99 MA's), (Start: 7 @36615 has 222 MA's), (Start: 16 @36678 has 8 MA's), (19, 36693), (Start: 21 @36702 has 15 MA's), (30, 36741), (46, 36828),

Gene: Coffee_41 Start: 37840, Stop: 38205, Start Num: 4

Candidate Starts for Coffee_41:

(Start: 4 @37840 has 26 MA's), (Start: 6 @37882 has 99 MA's), (Start: 7 @37885 has 222 MA's), (11, 37921), (Start: 16 @37948 has 8 MA's), (19, 37963), (24, 37984), (32, 38023), (54, 38146), (55, 38158), (60, 38188),

Gene: Colbert_40 Start: 36670, Stop: 36981, Start Num: 7

Candidate Starts for Colbert_40:

(Start: 6 @36667 has 99 MA's), (Start: 7 @36670 has 222 MA's), (Start: 16 @36733 has 8 MA's), (19, 36748), (Start: 21 @36757 has 15 MA's), (22, 36760), (30, 36796), (46, 36883), (62, 36973),

Gene: Coletti_39 Start: 36655, Stop: 36966, Start Num: 7

Candidate Starts for Coletti_39:

(Start: 6 @36652 has 99 MA's), (Start: 7 @36655 has 222 MA's), (Start: 16 @36718 has 8 MA's), (19, 36733), (Start: 21 @36742 has 15 MA's), (22, 36745), (30, 36781), (46, 36868), (62, 36958),

Gene: Compostia_41 Start: 37690, Stop: 38013, Start Num: 7

Candidate Starts for Compostia_41:

(2, 37402), (Start: 7 @37690 has 222 MA's), (Start: 21 @37777 has 15 MA's), (47, 37900), (52, 37921), (58, 37981), (61, 37990),

Gene: Cooper_37 Start: 36111, Stop: 36422, Start Num: 7

Candidate Starts for Cooper_37:

(1, 35772), (Start: 6 @36108 has 99 MA's), (Start: 7 @36111 has 222 MA's), (15, 36171), (Start: 16 @36174 has 8 MA's), (19, 36189), (20, 36195), (Start: 21 @36198 has 15 MA's), (24, 36210), (30, 36237), (37, 36276), (45, 36321), (46, 36324), (55, 36378), (58, 36402),

Gene: Cornobble_39 Start: 36169, Stop: 36480, Start Num: 7

Candidate Starts for Cornobble_39:

(Start: 6 @36166 has 99 MA's), (Start: 7 @36169 has 222 MA's), (Start: 16 @36232 has 8 MA's), (19, 36247), (Start: 21 @36256 has 15 MA's), (22, 36259), (30, 36295), (46, 36382), (62, 36472),

Gene: Corofin_40 Start: 37372, Stop: 37608, Start Num: 21

Candidate Starts for Corofin_40:

(2, 36997), (Start: 21 @37372 has 15 MA's), (47, 37495), (52, 37516), (58, 37576), (61, 37585),

Gene: Cosmolli16_39 Start: 36316, Stop: 36630, Start Num: 6

Candidate Starts for Cosmolli16_39:

(Start: 6 @36316 has 99 MA's), (Start: 7 @36319 has 222 MA's), (Start: 16 @36382 has 8 MA's), (19, 36397), (Start: 21 @36406 has 15 MA's), (22, 36409), (30, 36445), (46, 36532), (62, 36622),

Gene: Craff_40 Start: 36612, Stop: 36923, Start Num: 7

Candidate Starts for Craff_40:

(Start: 6 @36609 has 99 MA's), (Start: 7 @36612 has 222 MA's), (Start: 16 @36675 has 8 MA's), (19, 36690), (Start: 21 @36699 has 15 MA's), (22, 36702), (30, 36738), (46, 36825), (62, 36915),

Gene: Crownjwl_40 Start: 36382, Stop: 36696, Start Num: 6

Candidate Starts for Crownjwl_40:

(Start: 6 @36382 has 99 MA's), (Start: 7 @36385 has 222 MA's), (Start: 16 @36448 has 8 MA's), (19, 36463), (Start: 21 @36472 has 15 MA's), (22, 36475), (30, 36511), (46, 36598), (62, 36688),

Gene: D12_34 Start: 36305, Stop: 36589, Start Num: 16

Candidate Starts for D12_34:

(Start: 16 @36305 has 8 MA's), (26, 36353), (35, 36404), (38, 36419), (39, 36425), (41, 36455), (51, 36488), (55, 36530), (61, 36563),

Gene: DaddyDaniels_40 Start: 36303, Stop: 36614, Start Num: 7

Candidate Starts for DaddyDaniels_40:

(Start: 6 @36300 has 99 MA's), (Start: 7 @36303 has 222 MA's), (Start: 16 @36366 has 8 MA's), (19, 36381), (Start: 21 @36390 has 15 MA's), (30, 36429), (46, 36516),

Gene: Daffy_40 Start: 36334, Stop: 36645, Start Num: 7

Candidate Starts for Daffy_40:

(Start: 6 @36331 has 99 MA's), (Start: 7 @36334 has 222 MA's), (Start: 16 @36397 has 8 MA's), (19, 36412), (Start: 21 @36421 has 15 MA's), (22, 36424), (30, 36460), (46, 36547), (62, 36637),

Gene: Daisy_40 Start: 37373, Stop: 37609, Start Num: 21

Candidate Starts for Daisy_40:

(2, 36998), (Start: 21 @37373 has 15 MA's), (47, 37496), (52, 37517), (58, 37577), (61, 37586),

Gene: Daka_40 Start: 36605, Stop: 36919, Start Num: 6

Candidate Starts for Daka_40:

(Start: 6 @36605 has 99 MA's), (Start: 7 @36608 has 222 MA's), (Start: 16 @36671 has 8 MA's), (19, 36686), (Start: 21 @36695 has 15 MA's), (22, 36698), (30, 36734), (46, 36821), (62, 36911),

Gene: Dati_40 Start: 36328, Stop: 36639, Start Num: 7

Candidate Starts for Dati_40:

(Start: 6 @36325 has 99 MA's), (Start: 7 @36328 has 222 MA's), (Start: 16 @36391 has 8 MA's), (19, 36406), (Start: 21 @36415 has 15 MA's), (30, 36454), (46, 36541),

Gene: Deenasa_40 Start: 38021, Stop: 38344, Start Num: 7

Candidate Starts for Deenasa_40:

(2, 37733), (Start: 7 @38021 has 222 MA's), (Start: 21 @38108 has 15 MA's), (47, 38231), (52, 38252), (58, 38312), (61, 38321),

Gene: DelRivs_39 Start: 36329, Stop: 36640, Start Num: 7

Candidate Starts for DelRivs_39:

(Start: 6 @36326 has 99 MA's), (Start: 7 @36329 has 222 MA's), (Start: 16 @36392 has 8 MA's), (19, 36407), (Start: 21 @36416 has 15 MA's), (30, 36455), (46, 36542), (62, 36632),

Gene: Derpp_39 Start: 36170, Stop: 36484, Start Num: 6

Candidate Starts for Derpp_39:

(Start: 6 @36170 has 99 MA's), (Start: 7 @36173 has 222 MA's), (Start: 16 @36236 has 8 MA's), (19, 36251), (Start: 21 @36260 has 15 MA's), (30, 36299), (46, 36386),

Gene: Devonte_40 Start: 37250, Stop: 37573, Start Num: 7

Candidate Starts for Devonte_40:

(2, 36962), (Start: 7 @37250 has 222 MA's), (Start: 21 @37337 has 15 MA's), (47, 37460), (52, 37481), (58, 37541), (61, 37550),

Gene: Dice_41 Start: 36308, Stop: 36619, Start Num: 7

Candidate Starts for Dice_41:

(Start: 6 @36305 has 99 MA's), (Start: 7 @36308 has 222 MA's), (Start: 16 @36371 has 8 MA's), (19, 36386), (Start: 21 @36395 has 15 MA's), (22, 36398), (30, 36434), (46, 36521), (62, 36611),

Gene: DigitDog_39 Start: 36912, Stop: 37232, Start Num: 7

Candidate Starts for DigitDog_39:

(Start: 6 @36909 has 99 MA's), (Start: 7 @36912 has 222 MA's), (Start: 16 @36975 has 8 MA's), (18, 36981), (19, 36990), (Start: 21 @36999 has 15 MA's), (23, 37008), (25, 37017), (26, 37020), (58, 37203),

Gene: Dingo_40 Start: 36591, Stop: 36902, Start Num: 7

Candidate Starts for Dingo_40:

(Start: 6 @36588 has 99 MA's), (Start: 7 @36591 has 222 MA's), (Start: 16 @36654 has 8 MA's), (19, 36669), (Start: 21 @36678 has 15 MA's), (22, 36681), (30, 36717), (46, 36804), (62, 36894),

Gene: Dione_39 Start: 36310, Stop: 36624, Start Num: 6

Candidate Starts for Dione_39:

(Start: 6 @36310 has 99 MA's), (Start: 7 @36313 has 222 MA's), (Start: 16 @36376 has 8 MA's), (19, 36391), (Start: 21 @36400 has 15 MA's), (22, 36403), (30, 36439), (46, 36526), (62, 36616),

Gene: DirtJuice_40 Start: 36597, Stop: 36908, Start Num: 7

Candidate Starts for DirtJuice_40:

(Start: 6 @36594 has 99 MA's), (Start: 7 @36597 has 222 MA's), (Start: 16 @36660 has 8 MA's), (19, 36675), (Start: 21 @36684 has 15 MA's), (22, 36687), (30, 36723), (46, 36810), (62, 36900),

Gene: Doddsville_40 Start: 36327, Stop: 36638, Start Num: 7

Candidate Starts for Doddsville_40:

(Start: 6 @36324 has 99 MA's), (Start: 7 @36327 has 222 MA's), (Start: 16 @36390 has 8 MA's), (19, 36405), (Start: 21 @36414 has 15 MA's), (30, 36453), (46, 36540),

Gene: DoesntMatter_40 Start: 36597, Stop: 36911, Start Num: 6

Candidate Starts for DoesntMatter_40:

(Start: 6 @36597 has 99 MA's), (Start: 7 @36600 has 222 MA's), (Start: 16 @36663 has 8 MA's), (19, 36678), (Start: 21 @36687 has 15 MA's), (22, 36690), (30, 36726), (46, 36813), (62, 36903),

Gene: DonSanchon_39 Start: 36304, Stop: 36618, Start Num: 6

Candidate Starts for DonSanchon_39:

(Start: 6 @36304 has 99 MA's), (Start: 7 @36307 has 222 MA's), (Start: 16 @36370 has 8 MA's), (19, 36385), (Start: 21 @36394 has 15 MA's), (22, 36397), (30, 36433), (46, 36520), (62, 36610),

Gene: DonTron_55 Start: 30760, Stop: 30981, Start Num: 12

Candidate Starts for DonTron_55:

(Start: 12 @30760 has 2 MA's), (Start: 21 @30808 has 15 MA's), (25, 30826), (26, 30829), (29, 30844), (53, 30922), (56, 30952), (58, 30973),

Gene: Donny_39 Start: 37205, Stop: 37525, Start Num: 7

Candidate Starts for Donny_39:

(Start: 6 @37202 has 99 MA's), (Start: 7 @37205 has 222 MA's), (Start: 16 @37268 has 8 MA's), (18, 37274), (19, 37283), (Start: 21 @37292 has 15 MA's), (23, 37301), (26, 37313), (58, 37496),

Gene: DuchessDung_38 Start: 35464, Stop: 35775, Start Num: 7

Candidate Starts for DuchessDung_38:

(Start: 6 @35461 has 99 MA's), (Start: 7 @35464 has 222 MA's), (Start: 16 @35527 has 8 MA's), (19, 35542), (Start: 21 @35551 has 15 MA's), (30, 35590), (46, 35677),

Gene: Duggie_39 Start: 36329, Stop: 36640, Start Num: 7

Candidate Starts for Duggie_39:

(Start: 6 @36326 has 99 MA's), (Start: 7 @36329 has 222 MA's), (Start: 16 @36392 has 8 MA's), (19, 36407), (Start: 21 @36416 has 15 MA's), (30, 36455), (46, 36542),

Gene: Durga_40 Start: 36627, Stop: 36938, Start Num: 7

Candidate Starts for Durga_40:

(Start: 6 @36624 has 99 MA's), (Start: 7 @36627 has 222 MA's), (Start: 16 @36690 has 8 MA's), (19, 36705), (Start: 21 @36714 has 15 MA's), (30, 36753), (46, 36840),

Gene: Eaglehorse_41 Start: 37764, Stop: 38129, Start Num: 4

Candidate Starts for Eaglehorse_41:

(Start: 4 @37764 has 26 MA's), (Start: 6 @37806 has 99 MA's), (Start: 7 @37809 has 222 MA's), (11, 37845), (Start: 16 @37872 has 8 MA's), (19, 37887), (24, 37908), (32, 37947), (54, 38070), (55, 38082), (60, 38112),

Gene: EastView9101_39 Start: 36855, Stop: 37175, Start Num: 7

Candidate Starts for EastView9101_39:

(Start: 6 @36852 has 99 MA's), (Start: 7 @36855 has 222 MA's), (Start: 16 @36918 has 8 MA's), (18, 36924), (19, 36933), (Start: 21 @36942 has 15 MA's), (23, 36951), (26, 36963), (58, 37146),

Gene: Emiris_40 Start: 36598, Stop: 36909, Start Num: 7

Candidate Starts for Emiris_40:

(Start: 6 @36595 has 99 MA's), (Start: 7 @36598 has 222 MA's), (Start: 16 @36661 has 8 MA's), (19, 36676), (Start: 21 @36685 has 15 MA's), (30, 36724), (46, 36811),

Gene: EmpTee_40 Start: 36607, Stop: 36918, Start Num: 7

Candidate Starts for EmpTee_40:

(Start: 6 @36604 has 99 MA's), (Start: 7 @36607 has 222 MA's), (Start: 16 @36670 has 8 MA's), (19, 36685), (Start: 21 @36694 has 15 MA's), (22, 36697), (30, 36733), (46, 36820), (62, 36910),

Gene: Eremos_40 Start: 36603, Stop: 36917, Start Num: 6

Candidate Starts for Eremos_40:

(Start: 6 @36603 has 99 MA's), (Start: 7 @36606 has 222 MA's), (Start: 16 @36669 has 8 MA's), (19, 36684), (Start: 21 @36693 has 15 MA's), (22, 36696), (30, 36732), (46, 36819), (62, 36909),

Gene: Etaye_40 Start: 36594, Stop: 36908, Start Num: 6

Candidate Starts for Etaye_40:

(Start: 6 @36594 has 99 MA's), (Start: 7 @36597 has 222 MA's), (Start: 16 @36660 has 8 MA's), (19, 36675), (Start: 21 @36684 has 15 MA's), (30, 36723), (46, 36810),

Gene: Eugenia_40 Start: 36613, Stop: 36927, Start Num: 6

Candidate Starts for Eugenia_40:

(Start: 6 @36613 has 99 MA's), (Start: 7 @36616 has 222 MA's), (Start: 16 @36679 has 8 MA's), (19, 36694), (Start: 21 @36703 has 15 MA's), (22, 36706), (30, 36742), (46, 36829), (62, 36919),

Gene: Fang_40 Start: 36620, Stop: 36931, Start Num: 7

Candidate Starts for Fang_40:

(Start: 6 @36617 has 99 MA's), (Start: 7 @36620 has 222 MA's), (Start: 16 @36683 has 8 MA's), (19, 36698), (Start: 21 @36707 has 15 MA's), (22, 36710), (30, 36746), (46, 36833), (62, 36923),

Gene: Faze9_40 Start: 37860, Stop: 38225, Start Num: 4

Candidate Starts for Faze9_40:

(Start: 4 @37860 has 26 MA's), (Start: 6 @37902 has 99 MA's), (Start: 7 @37905 has 222 MA's), (11, 37941), (Start: 16 @37968 has 8 MA's), (19, 37983), (24, 38004), (32, 38043), (54, 38166), (55, 38178), (60, 38208),

Gene: FluffyNinja_40 Start: 36610, Stop: 36924, Start Num: 6

Candidate Starts for FluffyNinja_40:

(Start: 6 @36610 has 99 MA's), (Start: 7 @36613 has 222 MA's), (Start: 16 @36676 has 8 MA's), (19, 36691), (Start: 21 @36700 has 15 MA's), (22, 36703), (30, 36739), (46, 36826), (62, 36916),

Gene: Fortunato_37 Start: 36922, Stop: 37236, Start Num: 6

Candidate Starts for Fortunato_37:

(Start: 6 @36922 has 99 MA's), (Start: 7 @36925 has 222 MA's), (Start: 16 @36988 has 8 MA's), (19, 37003), (20, 37009), (Start: 21 @37012 has 15 MA's), (24, 37024), (30, 37051), (37, 37090), (45, 37135), (46, 37138), (55, 37192), (58, 37216),

Gene: Fozzie_39 Start: 36629, Stop: 36940, Start Num: 7

Candidate Starts for Fozzie_39:

(Start: 6 @36626 has 99 MA's), (Start: 7 @36629 has 222 MA's), (Start: 16 @36692 has 8 MA's), (19, 36707), (Start: 21 @36716 has 15 MA's), (22, 36719), (30, 36755), (46, 36842), (62, 36932),

Gene: Frankicide_40 Start: 36625, Stop: 36936, Start Num: 7

Candidate Starts for Frankicide_40:

(Start: 6 @36622 has 99 MA's), (Start: 7 @36625 has 222 MA's), (Start: 16 @36688 has 8 MA's), (19, 36703), (Start: 21 @36712 has 15 MA's), (22, 36715), (30, 36751), (46, 36838), (62, 36928),

Gene: Frederick_37 Start: 36931, Stop: 37242, Start Num: 7

Candidate Starts for Frederick_37:

(Start: 6 @36928 has 99 MA's), (Start: 7 @36931 has 222 MA's), (Start: 16 @36994 has 8 MA's), (19, 37009), (20, 37015), (Start: 21 @37018 has 15 MA's), (24, 37030), (30, 37057), (37, 37096), (45, 37141), (46, 37144), (52, 37165), (55, 37198), (58, 37222),

Gene: FrenchFry_41 Start: 37854, Stop: 38219, Start Num: 4

Candidate Starts for FrenchFry_41:

(Start: 4 @37854 has 26 MA's), (Start: 6 @37896 has 99 MA's), (Start: 7 @37899 has 222 MA's), (11, 37935), (Start: 16 @37962 has 8 MA's), (19, 37977), (24, 37998), (32, 38037), (54, 38160), (55,

38172), (60, 38202),

Gene: Fresco_33 Start: 29763, Stop: 30020, Start Num: 11

Candidate Starts for Fresco_33:

(Start: 5 @29709 has 15 MA's), (11, 29763), (27, 29841), (28, 29844), (55, 29979),

Gene: Freya_39 Start: 36304, Stop: 36615, Start Num: 7

Candidate Starts for Freya_39:

(Start: 6 @36301 has 99 MA's), (Start: 7 @36304 has 222 MA's), (Start: 16 @36367 has 8 MA's), (19, 36382), (Start: 21 @36391 has 15 MA's), (22, 36394), (30, 36430), (46, 36517), (62, 36607),

Gene: FriarPreacher_40 Start: 36628, Stop: 36942, Start Num: 6

Candidate Starts for FriarPreacher_40:

(Start: 6 @36628 has 99 MA's), (Start: 7 @36631 has 222 MA's), (Start: 16 @36694 has 8 MA's), (19, 36709), (Start: 21 @36718 has 15 MA's), (22, 36721), (30, 36757), (46, 36844), (62, 36934),

Gene: Fringe_40 Start: 36596, Stop: 36907, Start Num: 7

Candidate Starts for Fringe_40:

(Start: 6 @36593 has 99 MA's), (Start: 7 @36596 has 222 MA's), (Start: 16 @36659 has 8 MA's), (19, 36674), (Start: 21 @36683 has 15 MA's), (22, 36686), (30, 36722), (46, 36809), (62, 36899),

Gene: FugateOSU_39 Start: 36306, Stop: 36620, Start Num: 6

Candidate Starts for FugateOSU_39:

(Start: 6 @36306 has 99 MA's), (Start: 7 @36309 has 222 MA's), (Start: 16 @36372 has 8 MA's), (19, 36387), (Start: 21 @36396 has 15 MA's), (22, 36399), (30, 36435), (46, 36522), (62, 36612),

Gene: Funsized_42 Start: 39513, Stop: 39821, Start Num: 7

Candidate Starts for Funsized_42:

(Start: 7 @39513 has 222 MA's), (11, 39549), (14, 39570), (Start: 16 @39576 has 8 MA's), (18, 39582), (19, 39591), (20, 39597), (Start: 21 @39600 has 15 MA's), (26, 39621), (43, 39717), (50, 39741),

Gene: Gadget_41 Start: 37273, Stop: 37596, Start Num: 7

Candidate Starts for Gadget_41:

(2, 36985), (Start: 7 @37273 has 222 MA's), (Start: 21 @37360 has 15 MA's), (47, 37483), (52, 37504), (58, 37564), (61, 37573),

Gene: Gareth_39 Start: 36309, Stop: 36623, Start Num: 6

Candidate Starts for Gareth_39:

(Start: 6 @36309 has 99 MA's), (Start: 7 @36312 has 222 MA's), (Start: 16 @36375 has 8 MA's), (19, 36390), (Start: 21 @36399 has 15 MA's), (22, 36402), (30, 36438), (46, 36525), (62, 36615),

Gene: GeneCoco_40 Start: 36618, Stop: 36932, Start Num: 6

Candidate Starts for GeneCoco_40:

(Start: 6 @36618 has 99 MA's), (Start: 7 @36621 has 222 MA's), (Start: 16 @36684 has 8 MA's), (19, 36699), (Start: 21 @36708 has 15 MA's), (30, 36747), (46, 36834),

Gene: Gervas_40 Start: 37240, Stop: 37563, Start Num: 7

Candidate Starts for Gervas_40:

(2, 36952), (Start: 7 @37240 has 222 MA's), (Start: 21 @37327 has 15 MA's), (47, 37450), (52, 37471), (58, 37531), (61, 37540),

Gene: Giraffe_40 Start: 36315, Stop: 36626, Start Num: 7

Candidate Starts for Giraffe_40:

(Start: 6 @36312 has 99 MA's), (Start: 7 @36315 has 222 MA's), (Start: 16 @36378 has 8 MA's), (19, 36393), (Start: 21 @36402 has 15 MA's), (22, 36405), (30, 36441), (46, 36528), (62, 36618),

Gene: Glass_41 Start: 37854, Stop: 38219, Start Num: 4

Candidate Starts for Glass_41:

(Start: 4 @37854 has 26 MA's), (Start: 6 @37896 has 99 MA's), (Start: 7 @37899 has 222 MA's), (11, 37935), (Start: 16 @37962 has 8 MA's), (19, 37977), (24, 37998), (32, 38037), (54, 38160), (55, 38172), (60, 38202),

Gene: GlenHope_41 Start: 37253, Stop: 37576, Start Num: 7

Candidate Starts for GlenHope_41:

(2, 36965), (Start: 7 @37253 has 222 MA's), (Start: 21 @37340 has 15 MA's), (47, 37463), (52, 37484), (58, 37544), (61, 37553),

Gene: GodPhather_36 Start: 36499, Stop: 36783, Start Num: 16

Candidate Starts for GodPhather_36:

(Start: 16 @36499 has 8 MA's), (24, 36538), (26, 36547), (35, 36598), (38, 36613), (41, 36649), (51, 36682), (55, 36724), (61, 36757),

Gene: Godines_41 Start: 37796, Stop: 38161, Start Num: 4

Candidate Starts for Godines_41:

(Start: 4 @37796 has 26 MA's), (Start: 6 @37838 has 99 MA's), (Start: 7 @37841 has 222 MA's), (11, 37877), (Start: 16 @37904 has 8 MA's), (19, 37919), (24, 37940), (32, 37979), (54, 38102), (55, 38114), (60, 38144),

Gene: Gophee_40 Start: 36598, Stop: 36909, Start Num: 7

Candidate Starts for Gophee_40:

(Start: 6 @36595 has 99 MA's), (Start: 7 @36598 has 222 MA's), (Start: 16 @36661 has 8 MA's), (19, 36676), (Start: 21 @36685 has 15 MA's), (22, 36688), (30, 36724), (46, 36811), (62, 36901),

Gene: Grand2040_39 Start: 36327, Stop: 36641, Start Num: 6

Candidate Starts for Grand2040_39:

(Start: 6 @36327 has 99 MA's), (Start: 7 @36330 has 222 MA's), (Start: 16 @36393 has 8 MA's), (19, 36408), (Start: 21 @36417 has 15 MA's), (22, 36420), (30, 36456), (46, 36543), (62, 36633),

Gene: Gwilliam_40 Start: 36607, Stop: 36921, Start Num: 6

Candidate Starts for Gwilliam_40:

(Start: 6 @36607 has 99 MA's), (Start: 7 @36610 has 222 MA's), (Start: 16 @36673 has 8 MA's), (19, 36688), (Start: 21 @36697 has 15 MA's), (22, 36700), (30, 36736), (46, 36823), (62, 36913),

Gene: Gyarad_0040 Start: 36609, Stop: 36923, Start Num: 6

Candidate Starts for Gyarad_0040:

(Start: 6 @36609 has 99 MA's), (Start: 7 @36612 has 222 MA's), (Start: 16 @36675 has 8 MA's), (19, 36690), (Start: 21 @36699 has 15 MA's), (22, 36702), (30, 36738), (46, 36825), (62, 36915),

Gene: HSavage_40 Start: 36613, Stop: 36927, Start Num: 6

Candidate Starts for HSavage_40:

(Start: 6 @36613 has 99 MA's), (Start: 7 @36616 has 222 MA's), (Start: 16 @36679 has 8 MA's), (19, 36694), (Start: 21 @36703 has 15 MA's), (22, 36706), (30, 36742), (46, 36829), (62, 36919),

Gene: Haimas_40 Start: 36607, Stop: 36918, Start Num: 7

Candidate Starts for Haimas_40:

(Start: 6 @36604 has 99 MA's), (Start: 7 @36607 has 222 MA's), (Start: 16 @36670 has 8 MA's), (19, 36685), (Start: 21 @36694 has 15 MA's), (22, 36697), (30, 36733), (46, 36820), (62, 36910),

Gene: Haleema_39 Start: 36330, Stop: 36641, Start Num: 7

Candidate Starts for Haleema_39:

(Start: 6 @36327 has 99 MA's), (Start: 7 @36330 has 222 MA's), (Start: 16 @36393 has 8 MA's), (19, 36408), (Start: 21 @36417 has 15 MA's), (22, 36420), (30, 36456), (46, 36543), (62, 36633),

Gene: Halfpint_39 Start: 37079, Stop: 37402, Start Num: 7

Candidate Starts for Halfpint_39:

(2, 36791), (Start: 7 @37079 has 222 MA's), (Start: 21 @37166 has 15 MA's), (47, 37289), (52, 37310), (58, 37370), (61, 37379),

Gene: Hamish_40 Start: 36599, Stop: 36910, Start Num: 7

Candidate Starts for Hamish_40:

(Start: 6 @36596 has 99 MA's), (Start: 7 @36599 has 222 MA's), (Start: 16 @36662 has 8 MA's), (19, 36677), (Start: 21 @36686 has 15 MA's), (22, 36689), (30, 36725), (46, 36812), (62, 36902),

Gene: Hangman_37 Start: 36920, Stop: 37234, Start Num: 6

Candidate Starts for Hangman_37:

(Start: 6 @36920 has 99 MA's), (Start: 7 @36923 has 222 MA's), (Start: 16 @36986 has 8 MA's), (19, 37001), (20, 37007), (Start: 21 @37010 has 15 MA's), (24, 37022), (30, 37049), (37, 37088), (45, 37133), (46, 37136), (55, 37190), (58, 37214),

Gene: Hartsy_39 Start: 36647, Stop: 36961, Start Num: 6

Candidate Starts for Hartsy_39:

(Start: 6 @36647 has 99 MA's), (Start: 7 @36650 has 222 MA's), (Start: 16 @36713 has 8 MA's), (19, 36728), (Start: 21 @36737 has 15 MA's), (22, 36740), (30, 36776), (46, 36863), (62, 36953),

Gene: Harvey_40 Start: 36625, Stop: 36936, Start Num: 7

Candidate Starts for Harvey_40:

(Start: 6 @36622 has 99 MA's), (Start: 7 @36625 has 222 MA's), (Start: 16 @36688 has 8 MA's), (19, 36703), (Start: 21 @36712 has 15 MA's), (22, 36715), (30, 36751), (46, 36838), (62, 36928),

Gene: HarveySr_40 Start: 37333, Stop: 37569, Start Num: 21

Candidate Starts for HarveySr_40:

(2, 36958), (Start: 21 @37333 has 15 MA's), (47, 37456), (52, 37477), (58, 37537), (61, 37546),

Gene: Hashim76_44 Start: 36072, Stop: 36353, Start Num: 10

Candidate Starts for Hashim76_44:

(Start: 6 @36039 has 99 MA's), (Start: 7 @36042 has 222 MA's), (10, 36072), (Start: 16 @36105 has 8 MA's), (19, 36120), (62, 36345),

Gene: Heath_36 Start: 36530, Stop: 36841, Start Num: 7

Candidate Starts for Heath_36:

(Start: 6 @36527 has 99 MA's), (Start: 7 @36530 has 222 MA's), (Start: 16 @36593 has 8 MA's), (19, 36608), (20, 36614), (Start: 21 @36617 has 15 MA's), (24, 36629), (30, 36656), (37, 36695), (45, 36740), (46, 36743), (52, 36764), (55, 36797),

Gene: Heathcliff_40 Start: 37311, Stop: 37547, Start Num: 21

Candidate Starts for Heathcliff_40:

(2, 36936), (Start: 21 @37311 has 15 MA's), (47, 37434), (52, 37455), (58, 37515), (61, 37524),

Gene: Hedgerow_41 Start: 37836, Stop: 38201, Start Num: 4

Candidate Starts for Hedgerow_41:

(Start: 4 @37836 has 26 MA's), (Start: 6 @37878 has 99 MA's), (Start: 7 @37881 has 222 MA's), (11, 37917), (Start: 16 @37944 has 8 MA's), (19, 37959), (24, 37980), (32, 38019), (54, 38142), (55, 38154), (60, 38184),

Gene: Held_40 Start: 36314, Stop: 36625, Start Num: 7

Candidate Starts for Held_40:

(Start: 6 @36311 has 99 MA's), (Start: 7 @36314 has 222 MA's), (Start: 16 @36377 has 8 MA's), (19, 36392), (Start: 21 @36401 has 15 MA's), (22, 36404), (30, 36440), (46, 36527), (62, 36617),

Gene: HenryJackson_39 Start: 36330, Stop: 36641, Start Num: 7

Candidate Starts for HenryJackson_39:

(Start: 6 @36327 has 99 MA's), (Start: 7 @36330 has 222 MA's), (Start: 16 @36393 has 8 MA's), (19, 36408), (Start: 21 @36417 has 15 MA's), (22, 36420), (30, 36456), (46, 36543), (62, 36633),

Gene: Hertubise_40 Start: 36618, Stop: 36932, Start Num: 6

Candidate Starts for Hertubise_40:

(Start: 6 @36618 has 99 MA's), (Start: 7 @36621 has 222 MA's), (Start: 16 @36684 has 8 MA's), (19, 36699), (Start: 21 @36708 has 15 MA's), (22, 36711), (30, 36747), (46, 36834), (62, 36924),

Gene: Hetaeria_40 Start: 36623, Stop: 36934, Start Num: 7

Candidate Starts for Hetaeria_40:

(Start: 6 @36620 has 99 MA's), (Start: 7 @36623 has 222 MA's), (Start: 16 @36686 has 8 MA's), (19, 36701), (Start: 21 @36710 has 15 MA's), (22, 36713), (30, 36749), (46, 36836), (62, 36926),

Gene: HighStump_39 Start: 36310, Stop: 36624, Start Num: 6

Candidate Starts for HighStump_39:

(Start: 6 @36310 has 99 MA's), (Start: 7 @36313 has 222 MA's), (Start: 16 @36376 has 8 MA's), (19, 36391), (Start: 21 @36400 has 15 MA's), (22, 36403), (30, 36439), (46, 36526), (62, 36616),

Gene: Hocus_39 Start: 36319, Stop: 36633, Start Num: 6

Candidate Starts for Hocus_39:

(Start: 6 @36319 has 99 MA's), (Start: 7 @36322 has 222 MA's), (Start: 16 @36385 has 8 MA's), (19, 36400), (Start: 21 @36409 has 15 MA's), (22, 36412), (30, 36448), (46, 36535), (62, 36625),

Gene: Holeinone_41 Start: 37716, Stop: 38081, Start Num: 4

Candidate Starts for Holeinone_41:

(Start: 4 @37716 has 26 MA's), (Start: 6 @37758 has 99 MA's), (Start: 7 @37761 has 222 MA's), (11, 37797), (Start: 16 @37824 has 8 MA's), (19, 37839), (24, 37860), (32, 37899), (54, 38022), (55, 38034), (60, 38064),

Gene: Horchata_40 Start: 36601, Stop: 36912, Start Num: 7

Candidate Starts for Horchata_40:

(Start: 6 @36598 has 99 MA's), (Start: 7 @36601 has 222 MA's), (Start: 16 @36664 has 8 MA's), (19, 36679), (Start: 21 @36688 has 15 MA's), (22, 36691), (30, 36727), (46, 36814), (62, 36904),

Gene: Hosp_032 Start: 33115, Stop: 33429, Start Num: 7

Candidate Starts for Hosp_032:

(Start: 6 @33112 has 99 MA's), (Start: 7 @33115 has 222 MA's), (Start: 16 @33178 has 8 MA's), (18, 33187), (19, 33196), (Start: 21 @33205 has 15 MA's), (24, 33217), (46, 33331), (52, 33352), (55, 33385),

Gene: Hydro_37 Start: 36940, Stop: 37251, Start Num: 7

Candidate Starts for Hydro_37:

(Start: 6 @36937 has 99 MA's), (Start: 7 @36940 has 222 MA's), (Start: 16 @37003 has 8 MA's), (19, 37018), (20, 37024), (Start: 21 @37027 has 15 MA's), (24, 37039), (30, 37066), (37, 37105), (45, 37150), (46, 37153), (55, 37207), (58, 37231),

Gene: ImtiyazSitla_39 Start: 36164, Stop: 36475, Start Num: 7

Candidate Starts for ImtiyazSitla_39:

(Start: 6 @36161 has 99 MA's), (Start: 7 @36164 has 222 MA's), (Start: 16 @36227 has 8 MA's), (19, 36242), (Start: 21 @36251 has 15 MA's), (30, 36290), (46, 36377),

Gene: Imvubu_33 Start: 33638, Stop: 33946, Start Num: 7

Candidate Starts for Imvubu_33:

(Start: 7 @33638 has 222 MA's), (Start: 9 @33662 has 1 MA's), (Start: 16 @33701 has 8 MA's), (18, 33707), (19, 33716), (Start: 21 @33725 has 15 MA's), (24, 33737), (28, 33752), (31, 33767), (34, 33794), (37, 33803), (55, 33902),

Gene: Inchworm_40 Start: 36599, Stop: 36910, Start Num: 7

Candidate Starts for Inchworm_40:

(Start: 6 @36596 has 99 MA's), (Start: 7 @36599 has 222 MA's), (Start: 16 @36662 has 8 MA's), (19, 36677), (Start: 21 @36686 has 15 MA's), (30, 36725), (46, 36812),

Gene: Indlovu_38 Start: 36164, Stop: 36469, Start Num: 7

Candidate Starts for Indlovu_38:

(Start: 7 @36164 has 222 MA's), (Start: 16 @36227 has 8 MA's), (19, 36242), (Start: 21 @36251 has 15 MA's), (23, 36260), (44, 36371),

Gene: Inverness_40 Start: 36610, Stop: 36924, Start Num: 6

Candidate Starts for Inverness_40:

(Start: 6 @36610 has 99 MA's), (Start: 7 @36613 has 222 MA's), (Start: 16 @36676 has 8 MA's), (19, 36691), (Start: 21 @36700 has 15 MA's), (22, 36703), (30, 36739), (46, 36826), (62, 36916),

Gene: Iridoclysis_40 Start: 36593, Stop: 36904, Start Num: 7

Candidate Starts for Iridoclysis_40:

(Start: 6 @36590 has 99 MA's), (Start: 7 @36593 has 222 MA's), (Start: 16 @36656 has 8 MA's), (19, 36671), (Start: 21 @36680 has 15 MA's), (22, 36683), (30, 36719), (46, 36806), (62, 36896),

Gene: IsaacEli_40 Start: 36617, Stop: 36928, Start Num: 7

Candidate Starts for IsaacEli_40:

(Start: 6 @36614 has 99 MA's), (Start: 7 @36617 has 222 MA's), (Start: 16 @36680 has 8 MA's), (19, 36695), (Start: 21 @36704 has 15 MA's), (22, 36707), (30, 36743), (46, 36830), (62, 36920),

Gene: ItsyBitsy1_41 Start: 37718, Stop: 38083, Start Num: 4

Candidate Starts for ItsyBitsy1_41:

(Start: 4 @37718 has 26 MA's), (Start: 6 @37760 has 99 MA's), (Start: 7 @37763 has 222 MA's), (11, 37799), (Start: 16 @37826 has 8 MA's), (19, 37841), (24, 37862), (32, 37901), (54, 38024), (55, 38036), (60, 38066),

Gene: JAMaL_37 Start: 37111, Stop: 37422, Start Num: 7

Candidate Starts for JAMaL_37:

(Start: 6 @37108 has 99 MA's), (Start: 7 @37111 has 222 MA's), (Start: 16 @37174 has 8 MA's), (19, 37189), (20, 37195), (Start: 21 @37198 has 15 MA's), (24, 37210), (30, 37237), (37, 37276), (45, 37321), (46, 37324), (55, 37378), (58, 37402),

Gene: JDog_40 Start: 36330, Stop: 36641, Start Num: 7

Candidate Starts for JDog_40:

(Start: 6 @36327 has 99 MA's), (Start: 7 @36330 has 222 MA's), (Start: 16 @36393 has 8 MA's), (19, 36408), (Start: 21 @36417 has 15 MA's), (30, 36456), (46, 36543),

Gene: JacAttac_40 Start: 36596, Stop: 36910, Start Num: 6

Candidate Starts for JacAttac_40:

(Start: 6 @36596 has 99 MA's), (Start: 7 @36599 has 222 MA's), (Start: 16 @36662 has 8 MA's), (19, 36677), (Start: 21 @36686 has 15 MA's), (22, 36689), (30, 36725), (46, 36812), (62, 36902),

Gene: Jackstina_37 Start: 37183, Stop: 37506, Start Num: 7

Candidate Starts for Jackstina_37:

(2, 36895), (Start: 7 @37183 has 222 MA's), (Start: 21 @37270 has 15 MA's), (47, 37393), (52, 37414), (58, 37474), (61, 37483),

Gene: JaguarMi_37 Start: 36406, Stop: 36717, Start Num: 7

Candidate Starts for JaguarMi_37:

(Start: 6 @36403 has 99 MA's), (Start: 7 @36406 has 222 MA's), (Start: 16 @36469 has 8 MA's), (19, 36484), (20, 36490), (Start: 21 @36493 has 15 MA's), (24, 36505), (30, 36532), (37, 36571), (45, 36616), (46, 36619), (55, 36673), (58, 36697),

Gene: JakeO_39 Start: 36332, Stop: 36643, Start Num: 7

Candidate Starts for JakeO_39:

(Start: 6 @36329 has 99 MA's), (Start: 7 @36332 has 222 MA's), (Start: 16 @36395 has 8 MA's), (19, 36410), (Start: 21 @36419 has 15 MA's), (30, 36458), (46, 36545), (62, 36635),

Gene: JangoPhett_40 Start: 36598, Stop: 36912, Start Num: 6

Candidate Starts for JangoPhett_40:

(Start: 6 @36598 has 99 MA's), (Start: 7 @36601 has 222 MA's), (Start: 16 @36664 has 8 MA's), (19, 36679), (Start: 21 @36688 has 15 MA's), (22, 36691), (30, 36727), (46, 36814), (62, 36904),

Gene: Jeon_35 Start: 36241, Stop: 36525, Start Num: 16

Candidate Starts for Jeon_35:

(Start: 16 @36241 has 8 MA's), (24, 36280), (26, 36289), (35, 36340), (38, 36355), (41, 36391), (51, 36424), (55, 36466), (61, 36499),

Gene: Jillium_39 Start: 36320, Stop: 36634, Start Num: 6

Candidate Starts for Jillium_39:

(Start: 6 @36320 has 99 MA's), (Start: 7 @36323 has 222 MA's), (Start: 16 @36386 has 8 MA's), (19, 36401), (Start: 21 @36410 has 15 MA's), (22, 36413), (30, 36449), (46, 36536), (62, 36626),

Gene: Jiminy_39 Start: 36167, Stop: 36478, Start Num: 7

Candidate Starts for Jiminy_39:

(Start: 6 @36164 has 99 MA's), (Start: 7 @36167 has 222 MA's), (Start: 16 @36230 has 8 MA's), (19, 36245), (Start: 21 @36254 has 15 MA's), (30, 36293), (46, 36380),

Gene: Jolie1_034 Start: 34902, Stop: 35216, Start Num: 7

Candidate Starts for Jolie1_034:

(Start: 6 @34899 has 99 MA's), (Start: 7 @34902 has 222 MA's), (Start: 16 @34965 has 8 MA's), (18, 34974), (19, 34983), (Start: 21 @34992 has 15 MA's), (24, 35004), (46, 35118), (52, 35139), (55, 35172),

Gene: KLucky39_40 Start: 36608, Stop: 36922, Start Num: 6

Candidate Starts for KLucky39_40:

(Start: 6 @36608 has 99 MA's), (Start: 7 @36611 has 222 MA's), (Start: 16 @36674 has 8 MA's), (19, 36689), (Start: 21 @36698 has 15 MA's), (22, 36701), (30, 36737), (46, 36824), (62, 36914),

Gene: Kahve_39 Start: 36327, Stop: 36638, Start Num: 7

Candidate Starts for Kahve_39:

(Start: 6 @36324 has 99 MA's), (Start: 7 @36327 has 222 MA's), (Start: 16 @36390 has 8 MA's), (19, 36405), (Start: 21 @36414 has 15 MA's), (22, 36417), (30, 36453), (46, 36540), (62, 36630),

Gene: Kailash_40 Start: 36665, Stop: 36976, Start Num: 7

Candidate Starts for Kailash_40:

(Start: 6 @36662 has 99 MA's), (Start: 7 @36665 has 222 MA's), (Start: 16 @36728 has 8 MA's), (19, 36743), (Start: 21 @36752 has 15 MA's), (22, 36755), (30, 36791), (46, 36878), (62, 36968),

Gene: Kaleb_41 Start: 37851, Stop: 38216, Start Num: 4

Candidate Starts for Kaleb_41:

(Start: 4 @37851 has 26 MA's), (Start: 6 @37893 has 99 MA's), (Start: 7 @37896 has 222 MA's), (11, 37932), (Start: 16 @37959 has 8 MA's), (19, 37974), (24, 37995), (32, 38034), (54, 38157), (55, 38169), (60, 38199),

Gene: Kamiyu_40 Start: 37232, Stop: 37555, Start Num: 7

Candidate Starts for Kamiyu_40:

(2, 36944), (Start: 7 @37232 has 222 MA's), (Start: 21 @37319 has 15 MA's), (47, 37442), (52, 37463), (58, 37523), (61, 37532),

Gene: Katniss_40 Start: 36626, Stop: 36937, Start Num: 7

Candidate Starts for Katniss_40:

(Start: 6 @36623 has 99 MA's), (Start: 7 @36626 has 222 MA's), (Start: 16 @36689 has 8 MA's), (19, 36704), (Start: 21 @36713 has 15 MA's), (22, 36716), (30, 36752), (46, 36839), (62, 36929),

Gene: KayaCho_34 Start: 34898, Stop: 35212, Start Num: 7

Candidate Starts for KayaCho_34:

(Start: 6 @34895 has 99 MA's), (Start: 7 @34898 has 222 MA's), (Start: 16 @34961 has 8 MA's), (18, 34970), (19, 34979), (Start: 21 @34988 has 15 MA's), (24, 35000), (46, 35114), (52, 35135), (55, 35168),

Gene: Keitherie_40 Start: 36664, Stop: 36975, Start Num: 7

Candidate Starts for Keitherie_40:

(Start: 6 @36661 has 99 MA's), (Start: 7 @36664 has 222 MA's), (Start: 16 @36727 has 8 MA's), (19, 36742), (Start: 21 @36751 has 15 MA's), (22, 36754), (30, 36790), (46, 36877), (62, 36967),

Gene: Kheth_41 Start: 37739, Stop: 38104, Start Num: 4

Candidate Starts for Kheth_41:

(Start: 4 @37739 has 26 MA's), (Start: 6 @37781 has 99 MA's), (Start: 7 @37784 has 222 MA's), (11, 37820), (Start: 16 @37847 has 8 MA's), (19, 37862), (24, 37883), (32, 37922), (54, 38045), (55, 38057), (60, 38087),

Gene: Kikipoo_40 Start: 36617, Stop: 36928, Start Num: 7

Candidate Starts for Kikipoo_40:

(Start: 6 @36614 has 99 MA's), (Start: 7 @36617 has 222 MA's), (Start: 16 @36680 has 8 MA's), (19, 36695), (Start: 21 @36704 has 15 MA's), (22, 36707), (30, 36743), (46, 36830), (62, 36920),

Gene: Kimbrough_40 Start: 36316, Stop: 36630, Start Num: 6

Candidate Starts for Kimbrough_40:

(Start: 6 @36316 has 99 MA's), (Start: 7 @36319 has 222 MA's), (Start: 16 @36382 has 8 MA's), (19, 326397), (Start: 21 @36406 has 15 MA's), (22, 36409), (30, 36445), (46, 36532), (62, 36622),

Gene: KingTut_31 Start: 31988, Stop: 32299, Start Num: 7

Candidate Starts for KingTut_31:

(Start: 6 @31985 has 99 MA's), (Start: 7 @31988 has 222 MA's), (Start: 16 @32051 has 8 MA's), (19, 32066), (Start: 21 @32075 has 15 MA's), (22, 32078), (30, 32114), (46, 32201), (62, 32291),

Gene: KingVeVeVe_40 Start: 36592, Stop: 36903, Start Num: 7

Candidate Starts for KingVeVeVe_40:

(Start: 6 @36589 has 99 MA's), (Start: 7 @36592 has 222 MA's), (Start: 16 @36655 has 8 MA's), (19, 36670), (Start: 21 @36679 has 15 MA's), (22, 36682), (30, 36718), (46, 36805), (62, 36895),

Gene: KlimbOn_40 Start: 36605, Stop: 36916, Start Num: 7

Candidate Starts for KlimbOn_40:

(Start: 6 @36602 has 99 MA's), (Start: 7 @36605 has 222 MA's), (Start: 16 @36668 has 8 MA's), (19, 36683), (Start: 21 @36692 has 15 MA's), (22, 36695), (30, 36731), (46, 36818), (62, 36908),

Gene: Kloppinator_40 Start: 36628, Stop: 36939, Start Num: 7

Candidate Starts for Kloppinator_40:

(Start: 6 @36625 has 99 MA's), (Start: 7 @36628 has 222 MA's), (Start: 16 @36691 has 8 MA's), (19, 36706), (Start: 21 @36715 has 15 MA's), (22, 36718), (30, 36754), (46, 36841), (62, 36931),

Gene: Knocker_41 Start: 38602, Stop: 38913, Start Num: 6

Candidate Starts for Knocker_41:

(Start: 6 @38602 has 99 MA's), (Start: 7 @38605 has 222 MA's), (10, 38635), (Start: 16 @38668 has 8 MA's), (18, 38674), (19, 38683), (26, 38713), (37, 38770), (55, 38869),

Gene: Kronus_39 Start: 37929, Stop: 38165, Start Num: 21

Candidate Starts for Kronus_39:

(2, 37554), (Start: 7 @37842 has 222 MA's), (Start: 21 @37929 has 15 MA's), (47, 38052), (52, 38073), (58, 38133), (61, 38142),

Gene: Kwadwo_39 Start: 36306, Stop: 36620, Start Num: 6

Candidate Starts for Kwadwo_39:

(Start: 6 @36306 has 99 MA's), (Start: 7 @36309 has 222 MA's), (Start: 16 @36372 has 8 MA's), (19, 36387), (Start: 21 @36396 has 15 MA's), (22, 36399), (30, 36435), (46, 36522), (62, 36612),

Gene: Kwksand96_39 Start: 36178, Stop: 36489, Start Num: 7

Candidate Starts for Kwksand96_39:

(Start: 6 @36175 has 99 MA's), (Start: 7 @36178 has 222 MA's), (Start: 16 @36241 has 8 MA's), (19, 36256), (Start: 21 @36265 has 15 MA's), (30, 36304), (46, 36391),

Gene: Labeouficaum_39 Start: 36170, Stop: 36484, Start Num: 6

Candidate Starts for Labeouficaum_39:

(Start: 6 @36170 has 99 MA's), (Start: 7 @36173 has 222 MA's), (Start: 16 @36236 has 8 MA's), (19, 36251), (Start: 21 @36260 has 15 MA's), (30, 36299), (46, 36386),

Gene: Lars_41 Start: 37841, Stop: 38206, Start Num: 4

Candidate Starts for Lars_41:

(Start: 4 @37841 has 26 MA's), (Start: 6 @37883 has 99 MA's), (Start: 7 @37886 has 222 MA's), (11, 37922), (Start: 16 @37949 has 8 MA's), (19, 37964), (24, 37985), (32, 38024), (54, 38147), (55, 38159), (60, 38189),

Gene: LasagnaCat_40 Start: 36611, Stop: 36922, Start Num: 7

Candidate Starts for LasagnaCat_40:

(Start: 6 @36608 has 99 MA's), (Start: 7 @36611 has 222 MA's), (Start: 16 @36674 has 8 MA's), (19, 36689), (Start: 21 @36698 has 15 MA's), (30, 36737), (46, 36824),

Gene: Lasso_40 Start: 36584, Stop: 36895, Start Num: 7

Candidate Starts for Lasso_40:

(Start: 6 @36581 has 99 MA's), (Start: 7 @36584 has 222 MA's), (Start: 16 @36647 has 8 MA's), (19, 36662), (Start: 21 @36671 has 15 MA's), (22, 36674), (30, 36710), (46, 36797), (62, 36887),

Gene: Laurie_40 Start: 37240, Stop: 37605, Start Num: 4

Candidate Starts for Laurie_40:

(Start: 4 @37240 has 26 MA's), (Start: 6 @37282 has 99 MA's), (Start: 7 @37285 has 222 MA's), (11, 37321), (Start: 16 @37348 has 8 MA's), (24, 37384), (32, 37423), (54, 37546), (55, 37558), (60, 37588),

Gene: LeeLot_40 Start: 36612, Stop: 36926, Start Num: 6

Candidate Starts for LeeLot_40:

(Start: 6 @36612 has 99 MA's), (Start: 7 @36615 has 222 MA's), (Start: 16 @36678 has 8 MA's), (19, 36693), (Start: 21 @36702 has 15 MA's), (22, 36705), (30, 36741), (46, 36828), (62, 36918),

Gene: Legolas_39 Start: 36325, Stop: 36636, Start Num: 7

Candidate Starts for Legolas_39:

(Start: 6 @36322 has 99 MA's), (Start: 7 @36325 has 222 MA's), (Start: 16 @36388 has 8 MA's), (19, 36403), (Start: 21 @36412 has 15 MA's), (22, 36415), (30, 36451), (46, 36538), (62, 36628),

Gene: LeiMonet_40 Start: 36316, Stop: 36627, Start Num: 7

Candidate Starts for LeiMonet_40:

(Start: 6 @36313 has 99 MA's), (Start: 7 @36316 has 222 MA's), (Start: 16 @36379 has 8 MA's), (19, 36394), (Start: 21 @36403 has 15 MA's), (22, 36406), (30, 36442), (46, 36529), (62, 36619),

Gene: LemonSlice_40 Start: 36312, Stop: 36623, Start Num: 7

Candidate Starts for LemonSlice_40:

(Start: 6 @36309 has 99 MA's), (Start: 7 @36312 has 222 MA's), (Start: 16 @36375 has 8 MA's), (19, 36390), (Start: 21 @36399 has 15 MA's), (22, 36402), (30, 36438), (46, 36525), (62, 36615),

Gene: Lephleur_41 Start: 37776, Stop: 38099, Start Num: 6

Candidate Starts for Lephleur_41:

(Start: 4 @37734 has 26 MA's), (Start: 6 @37776 has 99 MA's), (Start: 7 @37779 has 222 MA's), (11, 37815), (Start: 16 @37842 has 8 MA's), (19, 37857), (24, 37878), (32, 37917), (54, 38040), (55, 38052), (60, 38082),

Gene: LestyG_40 Start: 37263, Stop: 37586, Start Num: 7

Candidate Starts for LestyG_40:

(2, 36975), (Start: 7 @37263 has 222 MA's), (Start: 21 @37350 has 15 MA's), (47, 37473), (52, 37494), (58, 37554), (61, 37563),

Gene: Ligma_33 Start: 29709, Stop: 30020, Start Num: 5

Candidate Starts for Ligma_33:

(Start: 5 @29709 has 15 MA's), (11, 29763), (27, 29841), (28, 29844), (55, 29979),

Gene: LilMcDreamy_36 Start: 36325, Stop: 36642, Start Num: 7

Candidate Starts for LilMcDreamy_36:

(Start: 6 @36322 has 99 MA's), (Start: 7 @36325 has 222 MA's), (Start: 16 @36388 has 8 MA's), (17, 36391), (18, 36394), (19, 36403), (Start: 21 @36412 has 15 MA's), (23, 36421), (26, 36433), (46, 36538), (55, 36592), (58, 36616),

Gene: LittleMunchkin_35 Start: 33126, Stop: 33437, Start Num: 5

Candidate Starts for LittleMunchkin_35:

(Start: 5 @33126 has 15 MA's), (28, 33261), (55, 33396),

Gene: LizLemon_41 Start: 37850, Stop: 38215, Start Num: 4

Candidate Starts for LizLemon_41:

(Start: 4 @37850 has 26 MA's), (Start: 6 @37892 has 99 MA's), (Start: 7 @37895 has 222 MA's), (11, 37931), (Start: 16 @37958 has 8 MA's), (19, 37973), (24, 37994), (32, 38033), (54, 38156), (55, 38168), (60, 38198),

Gene: Lolalove_37 Start: 36934, Stop: 37248, Start Num: 6

Candidate Starts for Lolalove_37:

(Start: 6 @36934 has 99 MA's), (Start: 7 @36937 has 222 MA's), (Start: 16 @37000 has 8 MA's), (19, 37015), (20, 37021), (Start: 21 @37024 has 15 MA's), (24, 37036), (30, 37063), (37, 37102), (45, 37147), (46, 37150), (55, 37204), (58, 37228),

Gene: Longacauda_39 Start: 36317, Stop: 36628, Start Num: 7

Candidate Starts for Longacauda_39:

(Start: 6 @36314 has 99 MA's), (Start: 7 @36317 has 222 MA's), (Start: 16 @36380 has 8 MA's), (19, 36395), (Start: 21 @36404 has 15 MA's), (22, 36407), (30, 36443), (46, 36530),

Gene: Lopsy_39 Start: 36167, Stop: 36478, Start Num: 7

Candidate Starts for Lopsy_39:

(Start: 6 @36164 has 99 MA's), (Start: 7 @36167 has 222 MA's), (Start: 16 @36230 has 8 MA's), (19, 36245), (Start: 21 @36254 has 15 MA's), (22, 36257), (30, 36293), (46, 36380), (62, 36470),

Gene: LostAndPhound_39 Start: 36318, Stop: 36629, Start Num: 7

Candidate Starts for LostAndPhound_39:

(Start: 6 @36315 has 99 MA's), (Start: 7 @36318 has 222 MA's), (Start: 16 @36381 has 8 MA's), (19, 36396), (Start: 21 @36405 has 15 MA's), (22, 36408), (30, 36444), (46, 36531), (62, 36621),

Gene: LuckyMarjie_39 Start: 36324, Stop: 36638, Start Num: 6

Candidate Starts for LuckyMarjie_39:

(Start: 6 @36324 has 99 MA's), (Start: 7 @36327 has 222 MA's), (Start: 16 @36390 has 8 MA's), (19, 36405), (Start: 21 @36414 has 15 MA's), (22, 36417), (30, 36453), (46, 36540), (62, 36630),

Gene: Lulumae_39 Start: 36306, Stop: 36620, Start Num: 6

Candidate Starts for Lulumae_39:

(Start: 6 @36306 has 99 MA's), (Start: 7 @36309 has 222 MA's), (Start: 16 @36372 has 8 MA's), (19, 36387), (Start: 21 @36396 has 15 MA's), (22, 36399), (30, 36435), (46, 36522), (62, 36612),

Gene: Lulwa_40 Start: 36596, Stop: 36907, Start Num: 7

Candidate Starts for Lulwa_40:

(Start: 6 @36593 has 99 MA's), (Start: 7 @36596 has 222 MA's), (Start: 16 @36659 has 8 MA's), (19, 36674), (Start: 21 @36683 has 15 MA's), (22, 36686), (30, 36722), (46, 36809), (62, 36899),

Gene: Lumine_39 Start: 36302, Stop: 36616, Start Num: 6

Candidate Starts for Lumine_39:

(Start: 6 @36302 has 99 MA's), (Start: 7 @36305 has 222 MA's), (Start: 16 @36368 has 8 MA's), (19, 36383), (Start: 21 @36392 has 15 MA's), (22, 36395), (30, 36431), (46, 36518), (62, 36608),

Gene: MRabcd_39 Start: 36309, Stop: 36620, Start Num: 7

Candidate Starts for MRabcd_39:

(Start: 6 @36306 has 99 MA's), (Start: 7 @36309 has 222 MA's), (Start: 16 @36372 has 8 MA's), (19, 36387), (Start: 21 @36396 has 15 MA's), (22, 36399), (30, 36435), (46, 36522), (62, 36612),

Gene: Mag7_39 Start: 36215, Stop: 36526, Start Num: 7

Candidate Starts for Mag7_39:

(Start: 6 @36212 has 99 MA's), (Start: 7 @36215 has 222 MA's), (Start: 16 @36278 has 8 MA's), (19, 36293), (Start: 21 @36302 has 15 MA's), (22, 36305), (30, 36341), (46, 36428), (62, 36518),

Gene: Magic8_40 Start: 36647, Stop: 36961, Start Num: 6

Candidate Starts for Magic8_40:

(Start: 6 @36647 has 99 MA's), (Start: 7 @36650 has 222 MA's), (Start: 16 @36713 has 8 MA's), (19, 36728), (Start: 21 @36737 has 15 MA's), (30, 36776), (46, 36863),

Gene: Magpie_36 Start: 36770, Stop: 37084, Start Num: 6

Candidate Starts for Magpie_36:

(Start: 6 @36770 has 99 MA's), (Start: 7 @36773 has 222 MA's), (Start: 16 @36836 has 8 MA's), (19, 36851), (20, 36857), (Start: 21 @36860 has 15 MA's), (24, 36872), (30, 36899), (37, 36938), (45, 36983), (46, 36986), (55, 37040), (58, 37064),

Gene: MakoManhole_35 Start: 31663, Stop: 31977, Start Num: 5

Candidate Starts for MakoManhole_35:

(Start: 5 @31663 has 15 MA's), (Start: 12 @31723 has 2 MA's), (27, 31795), (28, 31798), (29, 31807), (44, 31879), (55, 31936),

Gene: Mana_39 Start: 36321, Stop: 36635, Start Num: 6

Candidate Starts for Mana_39:

(Start: 6 @36321 has 99 MA's), (Start: 7 @36324 has 222 MA's), (Start: 16 @36387 has 8 MA's), (19, 36402), (Start: 21 @36411 has 15 MA's), (22, 36414), (30, 36450), (46, 36537), (62, 36627),

Gene: Manad_39 Start: 36163, Stop: 36477, Start Num: 6

Candidate Starts for Manad_39:

(Start: 6 @36163 has 99 MA's), (Start: 7 @36166 has 222 MA's), (Start: 16 @36229 has 8 MA's), (19, 36244), (Start: 21 @36253 has 15 MA's), (22, 36256), (30, 36292), (46, 36379), (62, 36469),

Gene: Mariokart_33 Start: 29652, Stop: 29963, Start Num: 5

Candidate Starts for Mariokart_33:

(Start: 5 @29652 has 15 MA's), (11, 29706), (27, 29784), (55, 29922),

Gene: Marley1013_40 Start: 38041, Stop: 38364, Start Num: 7

Candidate Starts for Marley1013_40:

(2, 37753), (Start: 7 @38041 has 222 MA's), (Start: 21 @38128 has 15 MA's), (47, 38251), (52, 38272), (58, 38332), (61, 38341),

Gene: Maru_39 Start: 36267, Stop: 36578, Start Num: 7

Candidate Starts for Maru_39:

(Start: 6 @36264 has 99 MA's), (Start: 7 @36267 has 222 MA's), (Start: 16 @36330 has 8 MA's), (19, 36345), (Start: 21 @36354 has 15 MA's), (22, 36357), (30, 36393), (46, 36480), (62, 36570),

Gene: Maskar_39 Start: 36164, Stop: 36475, Start Num: 7

Candidate Starts for Maskar_39:

(Start: 6 @36161 has 99 MA's), (Start: 7 @36164 has 222 MA's), (Start: 16 @36227 has 8 MA's), (19, 36242), (Start: 21 @36251 has 15 MA's), (30, 36290), (46, 36377),

Gene: MasterPo_41 Start: 37737, Stop: 38102, Start Num: 4

Candidate Starts for MasterPo_41:

(Start: 4 @37737 has 26 MA's), (Start: 6 @37779 has 99 MA's), (Start: 7 @37782 has 222 MA's), (11, 37818), (Start: 16 @37845 has 8 MA's), (19, 37860), (24, 37881), (32, 37920), (54, 38043), (55, 38055), (60, 38085),

Gene: Matalotodo_39 Start: 36607, Stop: 36921, Start Num: 6

Candidate Starts for Matalotodo_39:

(Start: 6 @36607 has 99 MA's), (Start: 7 @36610 has 222 MA's), (Start: 16 @36673 has 8 MA's), (19, 36688), (Start: 21 @36697 has 15 MA's), (22, 36700), (30, 36736), (46, 36823), (62, 36913),

Gene: Mcshane_39 Start: 36307, Stop: 36618, Start Num: 7

Candidate Starts for Mcshane_39:

(Start: 6 @36304 has 99 MA's), (Start: 7 @36307 has 222 MA's), (Start: 16 @36370 has 8 MA's), (19, 36385), (Start: 21 @36394 has 15 MA's), (22, 36397), (30, 36433), (46, 36520), (62, 36610),

Gene: Mecca_39 Start: 36310, Stop: 36621, Start Num: 7

Candidate Starts for Mecca_39:

(Start: 6 @36307 has 99 MA's), (Start: 7 @36310 has 222 MA's), (Start: 16 @36373 has 8 MA's), (19, 36388), (Start: 21 @36397 has 15 MA's), (22, 36400), (30, 36436), (46, 36523), (62, 36613),

Gene: Megabear_35 Start: 35678, Stop: 35962, Start Num: 16

Candidate Starts for Megabear_35:

(Start: 16 @35678 has 8 MA's), (26, 35726), (35, 35777), (38, 35792), (39, 35798), (41, 35828), (51, 35861), (55, 35903), (61, 35936),

Gene: Megamind20_40 Start: 36329, Stop: 36643, Start Num: 6

Candidate Starts for Megamind20_40:

(Start: 6 @36329 has 99 MA's), (Start: 7 @36332 has 222 MA's), (Start: 16 @36395 has 8 MA's), (19, 36410), (Start: 21 @36419 has 15 MA's), (22, 36422), (30, 36458), (46, 36545), (62, 36635),

Gene: Megatron_40 Start: 36608, Stop: 36919, Start Num: 7

Candidate Starts for Megatron_40:

(Start: 6 @36605 has 99 MA's), (Start: 7 @36608 has 222 MA's), (Start: 16 @36671 has 8 MA's), (19, 36686), (Start: 21 @36695 has 15 MA's), (22, 36698), (30, 36734), (46, 36821), (62, 36911),

Gene: Melc17_40 Start: 36605, Stop: 36916, Start Num: 7

Candidate Starts for Melc17_40:

(Start: 6 @36602 has 99 MA's), (Start: 7 @36605 has 222 MA's), (Start: 16 @36668 has 8 MA's), (19, 36683), (Start: 21 @36692 has 15 MA's), (30, 36731), (46, 36818),

Gene: MelsMeow_39 Start: 36213, Stop: 36524, Start Num: 7

Candidate Starts for MelsMeow_39:

(Start: 6 @36210 has 99 MA's), (Start: 7 @36213 has 222 MA's), (Start: 16 @36276 has 8 MA's), (19, 36291), (Start: 21 @36300 has 15 MA's), (30, 36339), (46, 36426),

Gene: Mesh1_40 Start: 36619, Stop: 36933, Start Num: 6

Candidate Starts for Mesh1_40:

(Start: 6 @36619 has 99 MA's), (Start: 7 @36622 has 222 MA's), (Start: 16 @36685 has 8 MA's), (19, 36700), (Start: 21 @36709 has 15 MA's), (22, 36712), (30, 36748), (46, 36835), (62, 36925),

Gene: MichaelPhcott_39 Start: 36209, Stop: 36523, Start Num: 6

Candidate Starts for MichaelPhcott_39:

(Start: 6 @36209 has 99 MA's), (Start: 7 @36212 has 222 MA's), (Start: 16 @36275 has 8 MA's), (19, 36290), (Start: 21 @36299 has 15 MA's), (22, 36302), (30, 36338), (46, 36425), (62, 36515),

Gene: Mikota_40 Start: 36595, Stop: 36906, Start Num: 7

Candidate Starts for Mikota_40:

(Start: 6 @36592 has 99 MA's), (Start: 7 @36595 has 222 MA's), (Start: 16 @36658 has 8 MA's), (19, 36673), (Start: 21 @36682 has 15 MA's), (22, 36685), (30, 36721), (46, 36808), (62, 36898),

Gene: MiniBoss_40 Start: 36601, Stop: 36912, Start Num: 7

Candidate Starts for MiniBoss_40:

(Start: 6 @36598 has 99 MA's), (Start: 7 @36601 has 222 MA's), (Start: 16 @36664 has 8 MA's), (19, 36679), (Start: 21 @36688 has 15 MA's), (22, 36691), (30, 36727), (46, 36814), (62, 36904),

Gene: MitKao_40 Start: 36313, Stop: 36627, Start Num: 6

Candidate Starts for MitKao_40:

(Start: 6 @36313 has 99 MA's), (Start: 7 @36316 has 222 MA's), (Start: 16 @36379 has 8 MA's), (19, 36394), (Start: 21 @36403 has 15 MA's), (22, 36406), (30, 36442), (46, 36529), (62, 36619),

Gene: Mithril_37 Start: 36941, Stop: 37252, Start Num: 7

Candidate Starts for Mithril_37:

(Start: 6 @36938 has 99 MA's), (Start: 7 @36941 has 222 MA's), (Start: 16 @37004 has 8 MA's), (19, 37019), (20, 37025), (Start: 21 @37028 has 15 MA's), (24, 37040), (30, 37067), (37, 37106), (45, 37151), (46, 37154), (55, 37208), (58, 37232),

Gene: MmasiCarm_40 Start: 37332, Stop: 37568, Start Num: 21

Candidate Starts for MmasiCarm_40:

(2, 36957), (Start: 21 @37332 has 15 MA's), (47, 37455), (52, 37476), (58, 37536), (61, 37545),

Gene: Morgushi_40 Start: 36317, Stop: 36628, Start Num: 7

Candidate Starts for Morgushi_40:

(Start: 6 @36314 has 99 MA's), (Start: 7 @36317 has 222 MA's), (Start: 16 @36380 has 8 MA's), (19, 36395), (Start: 21 @36404 has 15 MA's), (22, 36407), (30, 36443), (46, 36530), (62, 36620),

Gene: Mortcellus_39 Start: 37897, Stop: 38220, Start Num: 7

Candidate Starts for Mortcellus_39:

(2, 37609), (Start: 7 @37897 has 222 MA's), (Start: 21 @37984 has 15 MA's), (47, 38107), (52, 38128), (58, 38188), (61, 38197),

Gene: Morty_40 Start: 36617, Stop: 36928, Start Num: 7

Candidate Starts for Morty_40:

(Start: 6 @36614 has 99 MA's), (Start: 7 @36617 has 222 MA's), (Start: 16 @36680 has 8 MA's), (19, 36695), (Start: 21 @36704 has 15 MA's), (22, 36707), (30, 36743), (46, 36830), (62, 36920),

Gene: Morty007_40 Start: 38041, Stop: 38364, Start Num: 7

Candidate Starts for Morty007_40:

(2, 37753), (Start: 7 @38041 has 222 MA's), (Start: 21 @38128 has 15 MA's), (47, 38251), (52, 38272), (58, 38332), (61, 38341),

Gene: Mosaic_39 Start: 36319, Stop: 36633, Start Num: 6

Candidate Starts for Mosaic_39:

(Start: 6 @36319 has 99 MA's), (Start: 7 @36322 has 222 MA's), (Start: 16 @36385 has 8 MA's), (19, 36400), (Start: 21 @36409 has 15 MA's), (22, 36412), (30, 36448), (46, 36535), (62, 36625),

Gene: MossRose_35 Start: 31642, Stop: 31956, Start Num: 5

Candidate Starts for MossRose_35:

(Start: 5 @31642 has 15 MA's), (Start: 12 @31702 has 2 MA's), (27, 31774), (28, 31777), (29, 31786), (44, 31858), (55, 31915),

Gene: MrPhizzler_39 Start: 36325, Stop: 36636, Start Num: 7

Candidate Starts for MrPhizzler_39:

(Start: 6 @36322 has 99 MA's), (Start: 7 @36325 has 222 MA's), (Start: 16 @36388 has 8 MA's), (19, 36403), (Start: 21 @36412 has 15 MA's), (22, 36415), (30, 36451), (46, 36538), (62, 36628),

Gene: Mudslide_37 Start: 37173, Stop: 37484, Start Num: 7

Candidate Starts for Mudslide_37:

(Start: 6 @37170 has 99 MA's), (Start: 7 @37173 has 222 MA's), (Start: 16 @37236 has 8 MA's), (19, 37251), (20, 37257), (Start: 21 @37260 has 15 MA's), (24, 37272), (30, 37299), (37, 37338), (45, 37383), (46, 37386), (55, 37440), (58, 37464),

Gene: Mulan_39 Start: 36334, Stop: 36645, Start Num: 7

Candidate Starts for Mulan_39:

(Start: 6 @36331 has 99 MA's), (Start: 7 @36334 has 222 MA's), (Start: 16 @36397 has 8 MA's), (19, 36412), (Start: 21 @36421 has 15 MA's), (22, 36424), (30, 36460), (46, 36547), (62, 36637),

Gene: Murdoc_40 Start: 36609, Stop: 36920, Start Num: 7

Candidate Starts for Murdoc_40:

(Start: 6 @36606 has 99 MA's), (Start: 7 @36609 has 222 MA's), (Start: 16 @36672 has 8 MA's), (19, 36687), (Start: 21 @36696 has 15 MA's), (22, 36699), (30, 36735), (46, 36822), (62, 36912),

Gene: Mutante_39 Start: 36313, Stop: 36627, Start Num: 6

Candidate Starts for Mutante_39:

(Start: 6 @36313 has 99 MA's), (Start: 7 @36316 has 222 MA's), (Start: 16 @36379 has 8 MA's), (19, 36394), (Start: 21 @36403 has 15 MA's), (22, 36406), (30, 36442), (46, 36529), (62, 36619),

Gene: Mysterious_41 Start: 37481, Stop: 37801, Start Num: 7

Candidate Starts for Mysterious_41:

(Start: 6 @37478 has 99 MA's), (Start: 7 @37481 has 222 MA's), (8, 37502), (Start: 16 @37544 has 8 MA's), (18, 37550), (19, 37559), (Start: 21 @37568 has 15 MA's), (23, 37577), (26, 37589), (46, 37694), (58, 37772),

Gene: NHagos_33 Start: 30199, Stop: 30513, Start Num: 5

Candidate Starts for NHagos_33:

(Start: 5 @30199 has 15 MA's), (23, 30316), (25, 30325), (28, 30334), (55, 30472),

Gene: Nacho_0040 Start: 36608, Stop: 36922, Start Num: 6

Candidate Starts for Nacho_0040:

(Start: 6 @36608 has 99 MA's), (Start: 7 @36611 has 222 MA's), (Start: 16 @36674 has 8 MA's), (19, 36689), (Start: 21 @36698 has 15 MA's), (22, 36701), (30, 36737), (46, 36824), (62, 36914),

Gene: Nanao_36 Start: 35899, Stop: 36210, Start Num: 7

Candidate Starts for Nanao_36:

(Start: 6 @35896 has 99 MA's), (Start: 7 @35899 has 222 MA's), (Start: 16 @35962 has 8 MA's), (19, 35977), (20, 35983), (Start: 21 @35986 has 15 MA's), (24, 35998), (30, 36025), (37, 36064), (45, 36109), (46, 36112), (52, 36133), (55, 36166),

Gene: Nangang_39 Start: 37277, Stop: 37597, Start Num: 7

Candidate Starts for Nangang_39:

(Start: 6 @37274 has 99 MA's), (Start: 7 @37277 has 222 MA's), (Start: 16 @37340 has 8 MA's), (18, 37346), (19, 37355), (Start: 21 @37364 has 15 MA's), (23, 37373), (25, 37382), (26, 37385), (58, 37568),

Gene: Neos5_40 Start: 38056, Stop: 38379, Start Num: 7

Candidate Starts for Neos5_40:

(2, 37768), (Start: 7 @38056 has 222 MA's), (Start: 21 @38143 has 15 MA's), (47, 38266), (52, 38287), (58, 38347), (61, 38356),

Gene: Newman_40 Start: 36608, Stop: 36919, Start Num: 7

Candidate Starts for Newman_40:

(Start: 6 @36605 has 99 MA's), (Start: 7 @36608 has 222 MA's), (Start: 16 @36671 has 8 MA's), (19, 36686), (Start: 21 @36695 has 15 MA's), (22, 36698), (30, 36734), (46, 36821), (62, 36911),

Gene: Nicole21_40 Start: 36603, Stop: 36917, Start Num: 6

Candidate Starts for Nicole21_40:

(Start: 6 @36603 has 99 MA's), (Start: 7 @36606 has 222 MA's), (Start: 16 @36669 has 8 MA's), (19, 36684), (Start: 21 @36693 has 15 MA's), (22, 36696), (30, 36732), (46, 36819), (62, 36909),

Gene: Nigel_35 Start: 35815, Stop: 36126, Start Num: 7

Candidate Starts for Nigel_35:

(1, 35476), (Start: 6 @35812 has 99 MA's), (Start: 7 @35815 has 222 MA's), (Start: 16 @35878 has 8 MA's), (19, 35893), (20, 35899), (Start: 21 @35902 has 15 MA's), (24, 35914), (30, 35941), (37, 35980), (45, 36025), (46, 36028), (55, 36082), (58, 36106),

Gene: Nozo_40 Start: 38021, Stop: 38344, Start Num: 7

Candidate Starts for Nozo_40:

(2, 37733), (Start: 7 @38021 has 222 MA's), (Start: 21 @38108 has 15 MA's), (47, 38231), (52, 38252), (58, 38312), (61, 38321),

Gene: Numberten_40 Start: 36612, Stop: 36926, Start Num: 6

Candidate Starts for Numberten_40:

(Start: 6 @36612 has 99 MA's), (Start: 7 @36615 has 222 MA's), (Start: 16 @36678 has 8 MA's), (19, 36693), (Start: 21 @36702 has 15 MA's), (22, 36705), (30, 36741), (46, 36828), (62, 36918),

Gene: Nyala_39 Start: 36308, Stop: 36619, Start Num: 7

Candidate Starts for Nyala_39:

(Start: 6 @36305 has 99 MA's), (Start: 7 @36308 has 222 MA's), (Start: 16 @36371 has 8 MA's), (19, 36386), (Start: 21 @36395 has 15 MA's), (22, 36398), (30, 36434), (46, 36521), (62, 36611),

Gene: OSmaximus_40 Start: 36650, Stop: 36961, Start Num: 7

Candidate Starts for OSmaximus_40:

(Start: 6 @36647 has 99 MA's), (Start: 7 @36650 has 222 MA's), (Start: 16 @36713 has 8 MA's), (19, 36728), (Start: 21 @36737 has 15 MA's), (22, 36740), (30, 36776), (46, 36863), (62, 36953),

Gene: Obutu_40 Start: 37245, Stop: 37568, Start Num: 7

Candidate Starts for Obutu_40:

(2, 36957), (Start: 7 @37245 has 222 MA's), (Start: 21 @37332 has 15 MA's), (47, 37455), (52, 37476), (58, 37536), (61, 37545),

Gene: Olak_40 Start: 36308, Stop: 36622, Start Num: 6

Candidate Starts for Olak_40:

(Start: 6 @36308 has 99 MA's), (Start: 7 @36311 has 222 MA's), (Start: 16 @36374 has 8 MA's), (19, 36389), (Start: 21 @36398 has 15 MA's), (22, 36401), (30, 36437), (46, 36524), (62, 36614),

Gene: Oline_39 Start: 36177, Stop: 36488, Start Num: 7

Candidate Starts for Oline_39:

(Start: 6 @36174 has 99 MA's), (Start: 7 @36177 has 222 MA's), (Start: 16 @36240 has 8 MA's), (19, 36255), (Start: 21 @36264 has 15 MA's), (30, 36303), (46, 36390),

Gene: Olive_40 Start: 36595, Stop: 36909, Start Num: 6

Candidate Starts for Olive_40:

(Start: 6 @36595 has 99 MA's), (Start: 7 @36598 has 222 MA's), (Start: 16 @36661 has 8 MA's), (19, 36676), (Start: 21 @36685 has 15 MA's), (22, 36688), (30, 36724), (46, 36811), (62, 36901),

Gene: OliverWalter_40 Start: 36620, Stop: 36931, Start Num: 7

Candidate Starts for OliverWalter_40:

(Start: 6 @36617 has 99 MA's), (Start: 7 @36620 has 222 MA's), (Start: 16 @36683 has 8 MA's), (19, 36698), (Start: 21 @36707 has 15 MA's), (22, 36710), (30, 36746), (46, 36833), (62, 36923),

Gene: Omniscient_40 Start: 36617, Stop: 36928, Start Num: 7

Candidate Starts for Omniscient_40:

(Start: 6 @36614 has 99 MA's), (Start: 7 @36617 has 222 MA's), (Start: 16 @36680 has 8 MA's), (19, 36695), (Start: 21 @36704 has 15 MA's), (22, 36707), (30, 36743), (46, 36830), (62, 36920),

Gene: Oosterbaan_40 Start: 36608, Stop: 36919, Start Num: 7

Candidate Starts for Oosterbaan_40:

(Start: 6 @36605 has 99 MA's), (Start: 7 @36608 has 222 MA's), (Start: 16 @36671 has 8 MA's), (19, 36686), (Start: 21 @36695 has 15 MA's), (22, 36698), (30, 36734), (46, 36821), (62, 36911),

Gene: Opia_41 Start: 37723, Stop: 38088, Start Num: 4

Candidate Starts for Opia_41:

(Start: 4 @37723 has 26 MA's), (Start: 6 @37765 has 99 MA's), (Start: 7 @37768 has 222 MA's), (11, 37804), (Start: 16 @37831 has 8 MA's), (19, 37846), (24, 37867), (32, 37906), (54, 38029), (55, 38041), (60, 38071),

Gene: OrangeOswald_40 Start: 37349, Stop: 37585, Start Num: 21

Candidate Starts for OrangeOswald_40:

(2, 36974), (Start: 21 @37349 has 15 MA's), (47, 37472), (52, 37493), (58, 37553), (61, 37562),

Gene: Orfeu_39 Start: 36316, Stop: 36627, Start Num: 7

Candidate Starts for Orfeu_39:

(Start: 6 @36313 has 99 MA's), (Start: 7 @36316 has 222 MA's), (Start: 16 @36379 has 8 MA's), (19, 36394), (Start: 21 @36403 has 15 MA's), (22, 36406), (30, 36442), (46, 36529), (62, 36619),

Gene: Orion_40 Start: 36606, Stop: 36917, Start Num: 7

Candidate Starts for Orion_40:

(Start: 6 @36603 has 99 MA's), (Start: 7 @36606 has 222 MA's), (Start: 16 @36669 has 8 MA's), (19, 36684), (Start: 21 @36693 has 15 MA's), (22, 36696), (30, 36732), (46, 36819), (62, 36909),

Gene: Orwigg_40 Start: 36301, Stop: 36615, Start Num: 6

Candidate Starts for Orwigg_40:

(Start: 6 @36301 has 99 MA's), (Start: 7 @36304 has 222 MA's), (Start: 16 @36367 has 8 MA's), (19, 36382), (Start: 21 @36391 has 15 MA's), (22, 36394), (30, 36430), (46, 36517), (62, 36607),

Gene: PG1_40 Start: 36619, Stop: 36930, Start Num: 7

Candidate Starts for PG1_40:

(Start: 6 @36616 has 99 MA's), (Start: 7 @36619 has 222 MA's), (Start: 16 @36682 has 8 MA's), (19, 36697), (Start: 21 @36706 has 15 MA's), (22, 36709), (30, 36745), (46, 36832), (62, 36922),

Gene: PR_35 Start: 36282, Stop: 36566, Start Num: 16

Candidate Starts for PR_35:

(Start: 16 @36282 has 8 MA's), (26, 36330), (35, 36381), (38, 36396), (39, 36402), (41, 36432), (51, 36465), (55, 36507), (61, 36540),

Gene: Pacifista_41 Start: 36310, Stop: 36621, Start Num: 7

Candidate Starts for Pacifista_41:

(Start: 6 @36307 has 99 MA's), (Start: 7 @36310 has 222 MA's), (Start: 16 @36373 has 8 MA's), (19, 36388), (Start: 21 @36397 has 15 MA's), (22, 36400), (30, 36436), (46, 36523), (62, 36613),

Gene: PenguinLover67_42 Start: 38630, Stop: 38941, Start Num: 7

Candidate Starts for PenguinLover67_42:

(Start: 6 @38627 has 99 MA's), (Start: 7 @38630 has 222 MA's), (13, 38681), (15, 38690), (Start: 16 @38693 has 8 MA's), (18, 38702), (19, 38711), (45, 38843),

Gene: Phaedrus_38 Start: 37182, Stop: 37505, Start Num: 7

Candidate Starts for Phaedrus_38:

(2, 36894), (Start: 7 @37182 has 222 MA's), (Start: 21 @37269 has 15 MA's), (47, 37392), (52, 37413), (58, 37473), (61, 37482),

Gene: Phamished_40 Start: 36611, Stop: 36925, Start Num: 6

Candidate Starts for Phamished_40:

(Start: 6 @36611 has 99 MA's), (Start: 7 @36614 has 222 MA's), (Start: 16 @36677 has 8 MA's), (19, 36692), (Start: 21 @36701 has 15 MA's), (22, 36704), (30, 36740), (46, 36827), (62, 36917),

Gene: Phantasmagoria_41 Start: 37780, Stop: 38100, Start Num: 7

Candidate Starts for Phantasmagoria_41:

(Start: 4 @37735 has 26 MA's), (Start: 6 @37777 has 99 MA's), (Start: 7 @37780 has 222 MA's), (11, 37816), (Start: 16 @37843 has 8 MA's), (19, 37858), (24, 37879), (32, 37918), (54, 38041), (55, 38053), (60, 38083),

Gene: Phareon_40 Start: 36318, Stop: 36629, Start Num: 7

Candidate Starts for Phareon_40:

(Start: 6 @36315 has 99 MA's), (Start: 7 @36318 has 222 MA's), (Start: 16 @36381 has 8 MA's), (19, 36396), (Start: 21 @36405 has 15 MA's), (22, 36408), (30, 36444), (46, 36531), (62, 36621),

Gene: PhatCats2014_40 Start: 36620, Stop: 36934, Start Num: 6

Candidate Starts for PhatCats2014_40:

(Start: 6 @36620 has 99 MA's), (Start: 7 @36623 has 222 MA's), (Start: 16 @36686 has 8 MA's), (19, 36701), (Start: 21 @36710 has 15 MA's), (22, 36713), (30, 36749), (46, 36836), (62, 36926),

Gene: PhatLouie_40 Start: 36612, Stop: 36923, Start Num: 7

Candidate Starts for PhatLouie_40:

(Start: 6 @36609 has 99 MA's), (Start: 7 @36612 has 222 MA's), (Start: 16 @36675 has 8 MA's), (19, 36690), (Start: 21 @36699 has 15 MA's), (22, 36702), (30, 36738), (46, 36825), (62, 36915),

Gene: Phayeta_41 Start: 37127, Stop: 37450, Start Num: 7

Candidate Starts for Phayeta_41:

(2, 36839), (Start: 7 @37127 has 222 MA's), (Start: 21 @37214 has 15 MA's), (47, 37337), (52, 37358), (58, 37418), (61, 37427),

Gene: Phelemich_39 Start: 37480, Stop: 37800, Start Num: 7

Candidate Starts for Phelemich_39:

(Start: 6 @37477 has 99 MA's), (Start: 7 @37480 has 222 MA's), (8, 37501), (Start: 16 @37543 has 8 MA's), (18, 37549), (19, 37558), (Start: 21 @37567 has 15 MA's), (23, 37576), (26, 37588), (46, 37693), (58, 37771),

Gene: PhenghisKhan_39 Start: 36218, Stop: 36529, Start Num: 7

Candidate Starts for PhenghisKhan_39:

(Start: 6 @36215 has 99 MA's), (Start: 7 @36218 has 222 MA's), (Start: 16 @36281 has 8 MA's), (19, 36296), (Start: 21 @36305 has 15 MA's), (22, 36308), (30, 36344), (46, 36431), (62, 36521),

Gene: Pherdinand_40 Start: 36614, Stop: 36925, Start Num: 7

Candidate Starts for Pherdinand_40:

(Start: 6 @36611 has 99 MA's), (Start: 7 @36614 has 222 MA's), (Start: 16 @36677 has 8 MA's), (19, 36692), (Start: 21 @36701 has 15 MA's), (22, 36704), (30, 36740), (46, 36827), (62, 36917),

Gene: Phergie_39 Start: 36209, Stop: 36520, Start Num: 7

Candidate Starts for Phergie_39:

(Start: 6 @36206 has 99 MA's), (Start: 7 @36209 has 222 MA's), (Start: 16 @36272 has 8 MA's), (19, 36287), (Start: 21 @36296 has 15 MA's), (22, 36299), (30, 36335), (46, 36422), (62, 36512),

Gene: Philly_39 Start: 37113, Stop: 37436, Start Num: 7

Candidate Starts for Philly_39:

(2, 36825), (Start: 7 @37113 has 222 MA's), (Start: 21 @37200 has 15 MA's), (47, 37323), (52, 37344), (58, 37404), (61, 37413),

Gene: Phipps_40 Start: 36585, Stop: 36896, Start Num: 7

Candidate Starts for Phipps_40:

(Start: 6 @36582 has 99 MA's), (Start: 7 @36585 has 222 MA's), (Start: 16 @36648 has 8 MA's), (19, 36663), (Start: 21 @36672 has 15 MA's), (22, 36675), (30, 36711), (46, 36798), (62, 36888),

Gene: Phleuron_39 Start: 36212, Stop: 36526, Start Num: 6

Candidate Starts for Phleuron_39:

(Start: 6 @36212 has 99 MA's), (Start: 7 @36215 has 222 MA's), (Start: 16 @36278 has 8 MA's), (19, 36293), (Start: 21 @36302 has 15 MA's), (22, 36305), (30, 36341), (46, 36428), (62, 36518),

Gene: Phlyer_40 Start: 38001, Stop: 38324, Start Num: 7

Candidate Starts for Phlyer_40:

(2, 37713), (Start: 7 @38001 has 222 MA's), (Start: 21 @38088 has 15 MA's), (47, 38211), (52, 38232), (58, 38292), (61, 38301),

Gene: PhrankReynolds_39 Start: 36215, Stop: 36526, Start Num: 7

Candidate Starts for PhrankReynolds_39:

(Start: 6 @36212 has 99 MA's), (Start: 7 @36215 has 222 MA's), (Start: 16 @36278 has 8 MA's), (19, 36293), (Start: 21 @36302 has 15 MA's), (22, 36305), (30, 36341), (46, 36428), (62, 36518),

Gene: PhrodoBaggins_39 Start: 36602, Stop: 36913, Start Num: 7

Candidate Starts for PhrodoBaggins_39:

(Start: 6 @36599 has 99 MA's), (Start: 7 @36602 has 222 MA's), (Start: 16 @36665 has 8 MA's), (19, 36680), (Start: 21 @36689 has 15 MA's), (22, 36692), (30, 36728), (46, 36815), (62, 36905),

Gene: Phunky_40 Start: 36615, Stop: 36926, Start Num: 7

Candidate Starts for Phunky_40:

(Start: 6 @36612 has 99 MA's), (Start: 7 @36615 has 222 MA's), (Start: 16 @36678 has 8 MA's), (19, 36693), (Start: 21 @36702 has 15 MA's), (22, 36705), (30, 36741), (46, 36828), (62, 36918),

Gene: Piglet_0039 Start: 36719, Stop: 37033, Start Num: 6

Candidate Starts for Piglet_0039:

(Start: 6 @36719 has 99 MA's), (Start: 7 @36722 has 222 MA's), (Start: 16 @36785 has 8 MA's), (19, 36800), (Start: 21 @36809 has 15 MA's), (22, 36812), (30, 36848), (46, 36935), (62, 37025),

Gene: PinheadLarry_40 Start: 36328, Stop: 36639, Start Num: 7

Candidate Starts for PinheadLarry_40:

(Start: 6 @36325 has 99 MA's), (Start: 7 @36328 has 222 MA's), (Start: 16 @36391 has 8 MA's), (19, 36406), (Start: 21 @36415 has 15 MA's), (30, 36454), (46, 36541),

Gene: Pinkman_39 Start: 36171, Stop: 36482, Start Num: 7

Candidate Starts for Pinkman_39:

(Start: 6 @36168 has 99 MA's), (Start: 7 @36171 has 222 MA's), (Start: 16 @36234 has 8 MA's), (19, 36249), (Start: 21 @36258 has 15 MA's), (22, 36261), (30, 36297), (46, 36384),

Gene: Pipsqueak_40 Start: 36610, Stop: 36924, Start Num: 6

Candidate Starts for Pipsqueak_40:

(Start: 6 @36610 has 99 MA's), (Start: 7 @36613 has 222 MA's), (Start: 16 @36676 has 8 MA's), (19, 36691), (Start: 21 @36700 has 15 MA's), (22, 36703), (30, 36739), (46, 36826), (62, 36916),

Gene: Placalicious_39 Start: 36303, Stop: 36617, Start Num: 6

Candidate Starts for Placalicious_39:

(Start: 6 @36303 has 99 MA's), (Start: 7 @36306 has 222 MA's), (Start: 16 @36369 has 8 MA's), (19, 36384), (Start: 21 @36393 has 15 MA's), (22, 36396), (30, 36432), (46, 36519), (62, 36609),

Gene: Plmatters_40 Start: 36609, Stop: 36923, Start Num: 6

Candidate Starts for Plmatters_40:

(Start: 6 @36609 has 99 MA's), (Start: 7 @36612 has 222 MA's), (Start: 16 @36675 has 8 MA's), (19, 36690), (Start: 21 @36699 has 15 MA's), (22, 36702), (30, 36738), (46, 36825), (62, 36915),

Gene: Podrick_40 Start: 36603, Stop: 36914, Start Num: 7

Candidate Starts for Podrick_40:

(Start: 6 @36600 has 99 MA's), (Start: 7 @36603 has 222 MA's), (Start: 16 @36666 has 8 MA's), (19, 36681), (Start: 21 @36690 has 15 MA's), (22, 36693), (30, 36729), (46, 36816), (62, 36906),

Gene: Pops_40 Start: 36627, Stop: 36938, Start Num: 7

Candidate Starts for Pops_40:

(Start: 6 @36624 has 99 MA's), (Start: 7 @36627 has 222 MA's), (Start: 16 @36690 has 8 MA's), (19, 36705), (Start: 21 @36714 has 15 MA's), (22, 36717), (30, 36753), (46, 36840), (62, 36930),

Gene: Poster_36 Start: 35900, Stop: 36211, Start Num: 7

Candidate Starts for Poster_36:

(Start: 6 @35897 has 99 MA's), (Start: 7 @35900 has 222 MA's), (Start: 16 @35963 has 8 MA's), (19, 35978), (20, 35984), (Start: 21 @35987 has 15 MA's), (24, 35999), (30, 36026), (37, 36065), (45, 36110), (46, 36113), (52, 36134), (55, 36167),

Gene: Potter_39 Start: 36327, Stop: 36638, Start Num: 7

Candidate Starts for Potter_39:

(Start: 6 @36324 has 99 MA's), (Start: 7 @36327 has 222 MA's), (Start: 16 @36390 has 8 MA's), (19, 36405), (Start: 21 @36414 has 15 MA's), (22, 36417), (30, 36453), (46, 36540), (62, 36630),

Gene: Prickles_40 Start: 36603, Stop: 36914, Start Num: 7

Candidate Starts for Prickles_40:

(Start: 6 @36600 has 99 MA's), (Start: 7 @36603 has 222 MA's), (Start: 16 @36666 has 8 MA's), (19, 36681), (Start: 21 @36690 has 15 MA's), (22, 36693), (30, 36729), (46, 36816), (62, 36906),

Gene: Prince_38 Start: 37083, Stop: 37394, Start Num: 7

Candidate Starts for Prince_38:

(Start: 6 @37080 has 99 MA's), (Start: 7 @37083 has 222 MA's), (Start: 16 @37146 has 8 MA's), (19, 37161), (20, 37167), (Start: 21 @37170 has 15 MA's), (24, 37182), (30, 37209), (37, 37248), (45, 37293), (46, 37296), (55, 37350), (58, 37374),

Gene: ProfessorX_40 Start: 36598, Stop: 36909, Start Num: 7

Candidate Starts for ProfessorX_40:

(Start: 6 @36595 has 99 MA's), (Start: 7 @36598 has 222 MA's), (Start: 16 @36661 has 8 MA's), (19, 36676), (Start: 21 @36685 has 15 MA's), (22, 36688), (30, 36724), (46, 36811), (62, 36901),

Gene: Puhltonio_40 Start: 36619, Stop: 36930, Start Num: 7

Candidate Starts for Puhltonio_40:

(Start: 6 @36616 has 99 MA's), (Start: 7 @36619 has 222 MA's), (Start: 16 @36682 has 8 MA's), (19, 36697), (Start: 21 @36706 has 15 MA's), (22, 36709), (30, 36745), (46, 36832), (62, 36922),

Gene: QueenBeane_40 Start: 36606, Stop: 36920, Start Num: 6

Candidate Starts for QueenBeane_40:

(Start: 6 @36606 has 99 MA's), (Start: 7 @36609 has 222 MA's), (Start: 16 @36672 has 8 MA's), (19, 36687), (Start: 21 @36696 has 15 MA's), (22, 36699), (30, 36735), (46, 36822), (62, 36912),

Gene: Quesadilla_42 Start: 38636, Stop: 38953, Start Num: 6

Candidate Starts for Quesadilla_42:

(Start: 6 @38636 has 99 MA's), (Start: 7 @38639 has 222 MA's), (15, 38699), (Start: 16 @38702 has 8 MA's), (18, 38711), (19, 38720), (42, 38843), (45, 38852),

Gene: Quisquilliae_40 Start: 36637, Stop: 36948, Start Num: 7

Candidate Starts for Quisquilliae_40:

(Start: 6 @36634 has 99 MA's), (Start: 7 @36637 has 222 MA's), (Start: 16 @36700 has 8 MA's), (19, 36715), (Start: 21 @36724 has 15 MA's), (22, 36727), (30, 36763), (46, 36850), (62, 36940),

Gene: Qyrzula_38 Start: 37881, Stop: 38246, Start Num: 4

Candidate Starts for Qyrzula_38:

(Start: 4 @37881 has 26 MA's), (Start: 6 @37923 has 99 MA's), (Start: 7 @37926 has 222 MA's), (11, 37962), (Start: 16 @37989 has 8 MA's), (19, 38004), (24, 38025), (32, 38064), (54, 38187), (55, 38199), (60, 38229),

Gene: RagingRooster_40 Start: 37263, Stop: 37586, Start Num: 7

Candidate Starts for RagingRooster_40:

(2, 36975), (Start: 7 @37263 has 222 MA's), (Start: 21 @37350 has 15 MA's), (47, 37473), (52, 37494), (58, 37554), (61, 37563),

Gene: RawrgerThat_37 Start: 36928, Stop: 37239, Start Num: 7

Candidate Starts for RawrgerThat_37:

(Start: 6 @36925 has 99 MA's), (Start: 7 @36928 has 222 MA's), (Start: 16 @36991 has 8 MA's), (19, 37006), (20, 37012), (Start: 21 @37015 has 15 MA's), (24, 37027), (30, 37054), (37, 37093), (45, 37138), (46, 37141), (55, 37195), (58, 37219),

Gene: RedMaple_39 Start: 36616, Stop: 36927, Start Num: 7

Candidate Starts for RedMaple_39:

(Start: 6 @36613 has 99 MA's), (Start: 7 @36616 has 222 MA's), (Start: 16 @36679 has 8 MA's), (19, 36694), (Start: 21 @36703 has 15 MA's), (22, 36706), (30, 36742), (46, 36829), (62, 36919),

Gene: Reprobate_39 Start: 37482, Stop: 37805, Start Num: 6

Candidate Starts for Reprobate_39:

(Start: 6 @37482 has 99 MA's), (Start: 7 @37485 has 222 MA's), (8, 37506), (Start: 16 @37548 has 8 MA's), (18, 37554), (19, 37563), (Start: 21 @37572 has 15 MA's), (23, 37581), (26, 37593), (46, 37698), (58, 37776),

Gene: Rhinoforte_41 Start: 37844, Stop: 38209, Start Num: 4

Candidate Starts for Rhinoforte_41:

(Start: 4 @37844 has 26 MA's), (Start: 6 @37886 has 99 MA's), (Start: 7 @37889 has 222 MA's), (11, 37925), (Start: 16 @37952 has 8 MA's), (19, 37967), (24, 37988), (32, 38027), (54, 38150), (55, 38162), (60, 38192),

Gene: Rich_38 Start: 37097, Stop: 37417, Start Num: 7

Candidate Starts for Rich_38:

(Start: 6 @37094 has 99 MA's), (Start: 7 @37097 has 222 MA's), (Start: 16 @37160 has 8 MA's), (18, 37166), (19, 37175), (Start: 21 @37184 has 15 MA's), (23, 37193), (26, 37205), (58, 37388),

Gene: Ricotta_40 Start: 36335, Stop: 36646, Start Num: 7

Candidate Starts for Ricotta_40:

(Start: 6 @36332 has 99 MA's), (Start: 7 @36335 has 222 MA's), (Start: 16 @36398 has 8 MA's), (19, 36413), (Start: 21 @36422 has 15 MA's), (22, 36425), (30, 36461), (46, 36548), (62, 36638),

Gene: Riggan_40 Start: 36593, Stop: 36907, Start Num: 6

Candidate Starts for Riggan_40:

(Start: 6 @36593 has 99 MA's), (Start: 7 @36596 has 222 MA's), (Start: 16 @36659 has 8 MA's), (19, 36674), (Start: 21 @36683 has 15 MA's), (22, 36686), (30, 36722), (46, 36809), (62, 36899),

Gene: Rimu_41 Start: 36342, Stop: 36656, Start Num: 6

Candidate Starts for Rimu_41:

(Start: 6 @36342 has 99 MA's), (Start: 7 @36345 has 222 MA's), (Start: 16 @36408 has 8 MA's), (19, 36423), (Start: 21 @36432 has 15 MA's), (22, 36435), (30, 36471), (46, 36558), (62, 36648),

Gene: Rita1961_40 Start: 37333, Stop: 37569, Start Num: 21

Candidate Starts for Rita1961_40:

(2, 36958), (Start: 21 @37333 has 15 MA's), (47, 37456), (52, 37477), (58, 37537), (61, 37546),

Gene: Robyn_39 Start: 36180, Stop: 36491, Start Num: 7

Candidate Starts for Robyn_39:

(Start: 6 @36177 has 99 MA's), (Start: 7 @36180 has 222 MA's), (Start: 16 @36243 has 8 MA's), (19, 36258), (Start: 21 @36267 has 15 MA's), (22, 36270), (30, 36306), (46, 36393), (62, 36483),

Gene: Roliet_40 Start: 36602, Stop: 36916, Start Num: 6

Candidate Starts for Roliet_40:

(Start: 6 @36602 has 99 MA's), (Start: 7 @36605 has 222 MA's), (Start: 16 @36668 has 8 MA's), (19, 36683), (Start: 21 @36692 has 15 MA's), (22, 36695), (30, 36731), (46, 36818), (62, 36908),

Gene: RomaT_40 Start: 38123, Stop: 38359, Start Num: 21

Candidate Starts for RomaT_40:

(2, 37748), (Start: 21 @38123 has 15 MA's), (47, 38246), (52, 38267), (58, 38327), (61, 38336),

Gene: Roscoe_41 Start: 36840, Stop: 37154, Start Num: 6

Candidate Starts for Roscoe_41:

(Start: 6 @36840 has 99 MA's), (Start: 7 @36843 has 222 MA's), (Start: 16 @36906 has 8 MA's), (19, 36921), (Start: 21 @36930 has 15 MA's), (22, 36933), (30, 36969), (46, 37056), (62, 37146),

Gene: Rosebush_40 Start: 37851, Stop: 38216, Start Num: 4

Candidate Starts for Rosebush_40:

(Start: 4 @37851 has 26 MA's), (Start: 6 @37893 has 99 MA's), (Start: 7 @37896 has 222 MA's), (11, 37932), (Start: 16 @37959 has 8 MA's), (19, 37974), (24, 37995), (32, 38034), (54, 38157), (55, 38169), (60, 38199),

Gene: Roy17_40 Start: 36306, Stop: 36620, Start Num: 6

Candidate Starts for Roy17_40:

(Start: 6 @36306 has 99 MA's), (Start: 7 @36309 has 222 MA's), (Start: 16 @36372 has 8 MA's), (19, 36387), (Start: 21 @36396 has 15 MA's), (22, 36399), (30, 36435), (46, 36522), (62, 36612),

Gene: SDcharge11_40 Start: 36583, Stop: 36894, Start Num: 7

Candidate Starts for SDcharge11_40:

(Start: 6 @36580 has 99 MA's), (Start: 7 @36583 has 222 MA's), (Start: 16 @36646 has 8 MA's), (19, 36661), (Start: 21 @36670 has 15 MA's), (22, 36673), (30, 36709), (46, 36796), (62, 36886),

Gene: Sabella_40 Start: 37728, Stop: 38093, Start Num: 4

Candidate Starts for Sabella_40:

(Start: 4 @37728 has 26 MA's), (Start: 6 @37770 has 99 MA's), (Start: 7 @37773 has 222 MA's), (11, 37809), (Start: 16 @37836 has 8 MA's), (19, 37851), (24, 37872), (32, 37911), (54, 38034), (55, 38046), (60, 38076),

Gene: Saguaro_41 Start: 38281, Stop: 38601, Start Num: 7

Candidate Starts for Saguaro_41:

(Start: 7 @38281 has 222 MA's), (Start: 16 @38344 has 8 MA's), (18, 38353), (19, 38362), (Start: 21 @38371 has 15 MA's), (33, 38431), (52, 38518),

Gene: Samaymay_40 Start: 36609, Stop: 36920, Start Num: 7

Candidate Starts for Samaymay_40:

(Start: 6 @36606 has 99 MA's), (Start: 7 @36609 has 222 MA's), (Start: 16 @36672 has 8 MA's), (19, 36687), (Start: 21 @36696 has 15 MA's), (22, 36699), (30, 36735), (46, 36822), (62, 36912),

Gene: SassyCat97_39 Start: 36312, Stop: 36626, Start Num: 6

Candidate Starts for SassyCat97_39:

(Start: 6 @36312 has 99 MA's), (Start: 7 @36315 has 222 MA's), (Start: 16 @36378 has 8 MA's), (19, 36393), (Start: 21 @36402 has 15 MA's), (22, 36405), (30, 36441), (46, 36528), (62, 36618),

Gene: Schadenfreude_39 Start: 36166, Stop: 36477, Start Num: 7

Candidate Starts for Schadenfreude_39:

(Start: 6 @36163 has 99 MA's), (Start: 7 @36166 has 222 MA's), (Start: 16 @36229 has 8 MA's), (19, 36244), (Start: 21 @36253 has 15 MA's), (22, 36256), (30, 36292), (46, 36379), (62, 36469),

Gene: Schueller_40 Start: 36331, Stop: 36642, Start Num: 7

Candidate Starts for Schueller_40:

(Start: 6 @36328 has 99 MA's), (Start: 7 @36331 has 222 MA's), (Start: 16 @36394 has 8 MA's), (19, 36409), (Start: 21 @36418 has 15 MA's), (30, 36457), (46, 36544), (62, 36634),

Gene: Scoot17C_40 Start: 36608, Stop: 36919, Start Num: 7

Candidate Starts for Scoot17C_40:

(Start: 6 @36605 has 99 MA's), (Start: 7 @36608 has 222 MA's), (Start: 16 @36671 has 8 MA's), (19, 36686), (Start: 21 @36695 has 15 MA's), (22, 36698), (30, 36734), (46, 36821), (62, 36911),

Gene: Scrick_40 Start: 36333, Stop: 36644, Start Num: 7

Candidate Starts for Scrick_40:

(Start: 6 @36330 has 99 MA's), (Start: 7 @36333 has 222 MA's), (Start: 16 @36396 has 8 MA's), (19, 36411), (Start: 21 @36420 has 15 MA's), (22, 36423), (30, 36459), (46, 36546), (62, 36636),

Gene: Selr12_40 Start: 36333, Stop: 36647, Start Num: 6

Candidate Starts for Selr12_40:

(Start: 6 @36333 has 99 MA's), (Start: 7 @36336 has 222 MA's), (Start: 16 @36399 has 8 MA's), (19, 36414), (Start: 21 @36423 has 15 MA's), (22, 36426), (30, 36462), (46, 36549), (62, 36639),

Gene: Serendipitous_38 Start: 37048, Stop: 37368, Start Num: 7

Candidate Starts for Serendipitous_38:

(Start: 6 @37045 has 99 MA's), (Start: 7 @37048 has 222 MA's), (Start: 16 @37111 has 8 MA's), (18, 37117), (19, 37126), (Start: 21 @37135 has 15 MA's), (23, 37144), (25, 37153), (26, 37156), (58, 37339),

Gene: Serendipity_40 Start: 36633, Stop: 36944, Start Num: 7

Candidate Starts for Serendipity_40:

(Start: 6 @36630 has 99 MA's), (Start: 7 @36633 has 222 MA's), (Start: 16 @36696 has 8 MA's), (19, 36711), (Start: 21 @36720 has 15 MA's), (22, 36723), (30, 36759), (46, 36846), (62, 36936),

Gene: Serpentine_0040 Start: 36611, Stop: 36925, Start Num: 6

Candidate Starts for Serpentine_0040:

(Start: 6 @36611 has 99 MA's), (Start: 7 @36614 has 222 MA's), (Start: 16 @36677 has 8 MA's), (19, 36692), (Start: 21 @36701 has 15 MA's), (22, 36704), (30, 36740), (46, 36827), (62, 36917),

Gene: Shatter_33 Start: 29763, Stop: 30020, Start Num: 11

Candidate Starts for Shatter_33:

(Start: 5 @29709 has 15 MA's), (11, 29763), (27, 29841), (28, 29844), (55, 29979),

Gene: Sheila_40 Start: 36651, Stop: 36962, Start Num: 7

Candidate Starts for Sheila_40:

(Start: 6 @36648 has 99 MA's), (Start: 7 @36651 has 222 MA's), (Start: 16 @36714 has 8 MA's), (19, 36729), (Start: 21 @36738 has 15 MA's), (22, 36741), (30, 36777), (46, 36864), (62, 36954),

Gene: ShiVal_40 Start: 36604, Stop: 36918, Start Num: 6

Candidate Starts for ShiVal_40:

(Start: 6 @36604 has 99 MA's), (Start: 7 @36607 has 222 MA's), (Start: 16 @36670 has 8 MA's), (19, 36685), (Start: 21 @36694 has 15 MA's), (22, 36697), (30, 36733), (46, 36820), (62, 36910),

Gene: Sigman_40 Start: 36596, Stop: 36910, Start Num: 6

Candidate Starts for Sigman_40:

(Start: 6 @36596 has 99 MA's), (Start: 7 @36599 has 222 MA's), (Start: 16 @36662 has 8 MA's), (19, 36677), (Start: 21 @36686 has 15 MA's), (22, 36689), (30, 36725), (46, 36812), (62, 36902),

Gene: Simielle_39 Start: 36302, Stop: 36613, Start Num: 7

Candidate Starts for Simielle_39:

(Start: 6 @36299 has 99 MA's), (Start: 7 @36302 has 222 MA's), (Start: 16 @36365 has 8 MA's), (19, 36380), (Start: 21 @36389 has 15 MA's), (22, 36392), (30, 36428), (46, 36515), (62, 36605),

Gene: SirJeffery_39 Start: 37202, Stop: 37522, Start Num: 7

Candidate Starts for SirJeffery_39:

(Start: 6 @37199 has 99 MA's), (Start: 7 @37202 has 222 MA's), (Start: 16 @37265 has 8 MA's), (18, 37271), (19, 37280), (Start: 21 @37289 has 15 MA's), (23, 37298), (26, 37310), (58, 37493),

Gene: Sisko_33 Start: 30560, Stop: 30871, Start Num: 5

Candidate Starts for Sisko_33:

(3, 30353), (Start: 5 @30560 has 15 MA's), (27, 30692), (28, 30695), (55, 30830),

Gene: Skippy_40 Start: 36597, Stop: 36908, Start Num: 7

Candidate Starts for Skippy_40:

(Start: 6 @36594 has 99 MA's), (Start: 7 @36597 has 222 MA's), (Start: 16 @36660 has 8 MA's), (19, 36675), (Start: 21 @36684 has 15 MA's), (22, 36687), (30, 36723), (46, 36810), (62, 36900),

Gene: Slatt_40 Start: 36623, Stop: 36934, Start Num: 7

Candidate Starts for Slatt_40:

(Start: 6 @36620 has 99 MA's), (Start: 7 @36623 has 222 MA's), (Start: 16 @36686 has 8 MA's), (19, 36701), (Start: 21 @36710 has 15 MA's), (22, 36713), (30, 36749), (46, 36836), (62, 36926),

Gene: SlippinJimmy_40 Start: 38028, Stop: 38351, Start Num: 7

Candidate Starts for SlippinJimmy_40:

(2, 37740), (Start: 7 @38028 has 222 MA's), (Start: 21 @38115 has 15 MA's), (47, 38238), (52, 38259), (58, 38319), (61, 38328),

Gene: Soile_40 Start: 36329, Stop: 36640, Start Num: 7

Candidate Starts for Soile_40:

(Start: 6 @36326 has 99 MA's), (Start: 7 @36329 has 222 MA's), (Start: 16 @36392 has 8 MA's), (19, 36407), (Start: 21 @36416 has 15 MA's), (30, 36455), (46, 36542), (62, 36632),

Gene: Solosis_39 Start: 36324, Stop: 36635, Start Num: 7

Candidate Starts for Solosis_39:

(Start: 6 @36321 has 99 MA's), (Start: 7 @36324 has 222 MA's), (Start: 16 @36387 has 8 MA's), (19, 36402), (Start: 21 @36411 has 15 MA's), (22, 36414), (30, 36450), (46, 36537), (62, 36627),

Gene: Soos_51 Start: 29927, Stop: 30148, Start Num: 12

Candidate Starts for Soos_51:

(Start: 12 @29927 has 2 MA's), (Start: 21 @29975 has 15 MA's), (25, 29993), (26, 29996), (29, 30011), (53, 30089), (56, 30119), (58, 30140),

Gene: Sophia_39 Start: 36321, Stop: 36635, Start Num: 6

Candidate Starts for Sophia_39:

(Start: 6 @36321 has 99 MA's), (Start: 7 @36324 has 222 MA's), (Start: 16 @36387 has 8 MA's), (19, 36402), (Start: 21 @36411 has 15 MA's), (22, 36414), (30, 36450), (46, 36537), (62, 36627),

Gene: Soto_40 Start: 36617, Stop: 36928, Start Num: 7

Candidate Starts for Soto_40:

(Start: 6 @36614 has 99 MA's), (Start: 7 @36617 has 222 MA's), (Start: 16 @36680 has 8 MA's), (19, 36695), (Start: 21 @36704 has 15 MA's), (22, 36707), (30, 36743), (46, 36830), (62, 36920),

Gene: Sour_38 Start: 34439, Stop: 34750, Start Num: 5

Candidate Starts for Sour_38:

(Start: 4 @34412 has 26 MA's), (Start: 5 @34439 has 15 MA's), (27, 34571), (28, 34574), (55, 34709), (59, 34736),

Gene: Spartan300_40 Start: 36600, Stop: 36914, Start Num: 6

Candidate Starts for Spartan300_40:

(Start: 6 @36600 has 99 MA's), (Start: 7 @36603 has 222 MA's), (Start: 16 @36666 has 8 MA's), (19, 36681), (Start: 21 @36690 has 15 MA's), (22, 36693), (30, 36729), (46, 36816), (62, 36906),

Gene: Squid_40 Start: 36312, Stop: 36626, Start Num: 6

Candidate Starts for Squid_40:

(Start: 6 @36312 has 99 MA's), (Start: 7 @36315 has 222 MA's), (Start: 16 @36378 has 8 MA's), (19, 36393), (Start: 21 @36402 has 15 MA's), (22, 36405), (30, 36441), (46, 36528), (62, 36618),

Gene: Squiggle_40 Start: 36327, Stop: 36638, Start Num: 7

Candidate Starts for Squiggle_40:

(Start: 6 @36324 has 99 MA's), (Start: 7 @36327 has 222 MA's), (Start: 16 @36390 has 8 MA's), (19, 36405), (Start: 21 @36414 has 15 MA's), (22, 36417), (30, 36453), (46, 36540), (62, 36630),

Gene: Sting_55 Start: 30366, Stop: 30587, Start Num: 12

Candidate Starts for Sting_55:

(Start: 12 @30366 has 2 MA's), (Start: 21 @30414 has 15 MA's), (25, 30432), (26, 30435), (29, 30450), (53, 30528), (56, 30558), (58, 30579),

Gene: Stinger_35 Start: 35502, Stop: 35816, Start Num: 6

Candidate Starts for Stinger_35:

(1, 35166), (Start: 6 @35502 has 99 MA's), (Start: 7 @35505 has 222 MA's), (15, 35565), (Start: 16 @35568 has 8 MA's), (19, 35583), (20, 35589), (Start: 21 @35592 has 15 MA's), (24, 35604), (30, 35631), (37, 35670), (45, 35715), (46, 35718), (55, 35772), (58, 35796),

Gene: StinkyVeggy_41 Start: 37354, Stop: 37674, Start Num: 7

Candidate Starts for StinkyVeggy_41:

(Start: 6 @37351 has 99 MA's), (Start: 7 @37354 has 222 MA's), (Start: 16 @37417 has 8 MA's), (18, 37423), (19, 37432), (Start: 21 @37441 has 15 MA's), (23, 37450), (25, 37459), (26, 37462), (58, 37645),

Gene: Struggle_39 Start: 36165, Stop: 36476, Start Num: 7

Candidate Starts for Struggle_39:

(Start: 6 @36162 has 99 MA's), (Start: 7 @36165 has 222 MA's), (Start: 16 @36228 has 8 MA's), (19, 36243), (Start: 21 @36252 has 15 MA's), (30, 36291), (46, 36378),

Gene: Suffolk_40 Start: 36614, Stop: 36925, Start Num: 7

Candidate Starts for Suffolk_40:

(Start: 6 @36611 has 99 MA's), (Start: 7 @36614 has 222 MA's), (Start: 16 @36677 has 8 MA's), (19, 36692), (Start: 21 @36701 has 15 MA's), (22, 36704), (30, 36740), (46, 36827), (62, 36917),

Gene: Suigeneris_39 Start: 37205, Stop: 37525, Start Num: 7

Candidate Starts for Suigeneris_39:

(Start: 6 @37202 has 99 MA's), (Start: 7 @37205 has 222 MA's), (Start: 16 @37268 has 8 MA's), (18, 37274), (19, 37283), (Start: 21 @37292 has 15 MA's), (23, 37301), (26, 37313), (58, 37496),

Gene: Surely_40 Start: 36614, Stop: 36928, Start Num: 6

Candidate Starts for Surely_40:

(Start: 6 @36614 has 99 MA's), (Start: 7 @36617 has 222 MA's), (Start: 16 @36680 has 8 MA's), (19, 36695), (Start: 21 @36704 has 15 MA's), (22, 36707), (30, 36743), (46, 36830), (62, 36920),

Gene: Swiphy_41 Start: 36612, Stop: 36923, Start Num: 7

Candidate Starts for Swiphy_41:

(Start: 6 @36609 has 99 MA's), (Start: 7 @36612 has 222 MA's), (Start: 16 @36675 has 8 MA's), (19, 36690), (Start: 21 @36699 has 15 MA's), (22, 36702), (30, 36738), (46, 36825), (62, 36915),

Gene: Swish_40 Start: 36597, Stop: 36911, Start Num: 6

Candidate Starts for Swish_40:

(Start: 6 @36597 has 99 MA's), (Start: 7 @36600 has 222 MA's), (Start: 16 @36663 has 8 MA's), (19, 36678), (Start: 21 @36687 has 15 MA's), (22, 36690), (30, 36726), (46, 36813), (62, 36903),

Gene: SynergyX_40 Start: 37263, Stop: 37586, Start Num: 7

Candidate Starts for SynergyX_40:

(2, 36975), (Start: 7 @37263 has 222 MA's), (Start: 21 @37350 has 15 MA's), (47, 37473), (52, 37494), (58, 37554), (61, 37563),

Gene: TA17A_41 Start: 37718, Stop: 38083, Start Num: 4

Candidate Starts for TA17A_41:

(Start: 4 @37718 has 26 MA's), (Start: 6 @37760 has 99 MA's), (Start: 7 @37763 has 222 MA's), (11, 37799), (Start: 16 @37826 has 8 MA's), (19, 37841), (24, 37862), (32, 37901), (54, 38024), (55, 38036), (60, 38066),

Gene: TallGrassMM_40 Start: 36239, Stop: 36550, Start Num: 7

Candidate Starts for TallGrassMM_40:

(Start: 6 @36236 has 99 MA's), (Start: 7 @36239 has 222 MA's), (Start: 16 @36302 has 8 MA's), (19, 36317), (Start: 21 @36326 has 15 MA's), (22, 36329), (30, 36365), (46, 36452), (62, 36542),

Gene: Taptic_35 Start: 35678, Stop: 35962, Start Num: 16

Candidate Starts for Taptic_35:

(Start: 16 @35678 has 8 MA's), (26, 35726), (35, 35777), (38, 35792), (39, 35798), (41, 35828), (51, 35861), (55, 35903), (61, 35936),

Gene: Telesworld_39 Start: 36309, Stop: 36623, Start Num: 6

Candidate Starts for Telesworld_39:

(Start: 6 @36309 has 99 MA's), (Start: 7 @36312 has 222 MA's), (Start: 16 @36375 has 8 MA's), (19, 36390), (Start: 21 @36399 has 15 MA's), (22, 36402), (30, 36438), (46, 36525), (62, 36615),

Gene: Thonko_39 Start: 34628, Stop: 34939, Start Num: 7

Candidate Starts for Thonko_39:

(Start: 7 @34628 has 222 MA's), (Start: 9 @34652 has 1 MA's), (11, 34664), (14, 34685), (Start: 16 @34691 has 8 MA's), (18, 34697), (19, 34706),

Gene: Thora_40 Start: 36616, Stop: 36927, Start Num: 7

Candidate Starts for Thora_40:

(Start: 6 @36613 has 99 MA's), (Start: 7 @36616 has 222 MA's), (Start: 16 @36679 has 8 MA's), (19, 36694), (Start: 21 @36703 has 15 MA's), (22, 36706), (30, 36742), (46, 36829), (62, 36919),

Gene: ThreeOh3D2_40 Start: 36611, Stop: 36925, Start Num: 6

Candidate Starts for ThreeOh3D2_40:

(Start: 6 @36611 has 99 MA's), (Start: 7 @36614 has 222 MA's), (Start: 16 @36677 has 8 MA's), (19, 36692), (Start: 21 @36701 has 15 MA's), (22, 36704), (30, 36740), (46, 36827), (62, 36917),

Gene: Timmi_39 Start: 36322, Stop: 36636, Start Num: 6

Candidate Starts for Timmi_39:

(Start: 6 @36322 has 99 MA's), (Start: 7 @36325 has 222 MA's), (Start: 16 @36388 has 8 MA's), (19, 36403), (Start: 21 @36412 has 15 MA's), (22, 36415), (30, 36451), (46, 36538), (62, 36628),

Gene: Tinciduntolum_42 Start: 37856, Stop: 38221, Start Num: 4

Candidate Starts for Tinciduntolum_42:

(Start: 4 @37856 has 26 MA's), (Start: 6 @37898 has 99 MA's), (Start: 7 @37901 has 222 MA's), (11, 37937), (Start: 16 @37964 has 8 MA's), (19, 37979), (24, 38000), (32, 38039), (54, 38162), (55, 38174), (60, 38204),

Gene: TomBombadil_40 Start: 36607, Stop: 36921, Start Num: 6

Candidate Starts for TomBombadil_40:

(Start: 6 @36607 has 99 MA's), (Start: 7 @36610 has 222 MA's), (Start: 16 @36673 has 8 MA's), (19, 36688), (Start: 21 @36697 has 15 MA's), (22, 36700), (30, 36736), (46, 36823), (62, 36913),

Gene: Tomlarah_40 Start: 36601, Stop: 36912, Start Num: 7

Candidate Starts for Tomlarah_40:

(Start: 6 @36598 has 99 MA's), (Start: 7 @36601 has 222 MA's), (Start: 16 @36664 has 8 MA's), (19, 36679), (Start: 21 @36688 has 15 MA's), (22, 36691), (30, 36727), (46, 36814), (62, 36904),

Gene: Toni_39 Start: 36317, Stop: 36628, Start Num: 7

Candidate Starts for Toni_39:

(Start: 6 @36314 has 99 MA's), (Start: 7 @36317 has 222 MA's), (Start: 16 @36380 has 8 MA's), (19, 36395), (Start: 21 @36404 has 15 MA's), (22, 36407), (30, 36443), (46, 36530), (62, 36620),

Gene: Tonitrus_43 Start: 28395, Stop: 28634, Start Num: 12

Candidate Starts for Tonitrus_43:

(11, 28389), (Start: 12 @28395 has 2 MA's), (24, 28455), (26, 28464), (40, 28503), (49, 28545), (53, 28560), (56, 28590), (57, 28608), (58, 28611), (63, 28626),

Gene: Tooj_40 Start: 36674, Stop: 36985, Start Num: 7

Candidate Starts for Tooj_40:

(Start: 6 @36671 has 99 MA's), (Start: 7 @36674 has 222 MA's), (Start: 16 @36737 has 8 MA's), (19, 36752), (Start: 21 @36761 has 15 MA's), (22, 36764), (30, 36800), (46, 36887), (62, 36977),

Gene: Tres_41 Start: 37731, Stop: 38096, Start Num: 4

Candidate Starts for Tres_41:

(Start: 4 @37731 has 26 MA's), (Start: 6 @37773 has 99 MA's), (Start: 7 @37776 has 222 MA's), (11, 37812), (Start: 16 @37839 has 8 MA's), (19, 37854), (24, 37875), (32, 37914), (54, 38037), (55,

38049), (60, 38079),

Gene: True_39 Start: 36314, Stop: 36625, Start Num: 7

Candidate Starts for True_39:

(Start: 6 @36311 has 99 MA's), (Start: 7 @36314 has 222 MA's), (Start: 16 @36377 has 8 MA's), (19, 36392), (Start: 21 @36401 has 15 MA's), (22, 36404), (30, 36440), (46, 36527), (62, 36617),

Gene: Trypo_40 Start: 36610, Stop: 36921, Start Num: 7

Candidate Starts for Trypo_40:

(Start: 6 @36607 has 99 MA's), (Start: 7 @36610 has 222 MA's), (Start: 16 @36673 has 8 MA's), (19, 36688), (Start: 21 @36697 has 15 MA's), (30, 36736), (46, 36823),

Gene: Tydolla_40 Start: 37997, Stop: 38320, Start Num: 7

Candidate Starts for Tydolla_40:

(2, 37709), (Start: 7 @37997 has 222 MA's), (Start: 21 @38084 has 15 MA's), (47, 38207), (52, 38228), (58, 38288), (61, 38297),

Gene: TyrionL_39 Start: 36170, Stop: 36484, Start Num: 6

Candidate Starts for TyrionL_39:

(Start: 6 @36170 has 99 MA's), (Start: 7 @36173 has 222 MA's), (Start: 16 @36236 has 8 MA's), (19, 36251), (Start: 21 @36260 has 15 MA's), (30, 36299), (46, 36386),

Gene: UAch1_40 Start: 36620, Stop: 36934, Start Num: 6

Candidate Starts for UAch1_40:

(Start: 6 @36620 has 99 MA's), (Start: 7 @36623 has 222 MA's), (Start: 16 @36686 has 8 MA's), (19, 36701), (Start: 21 @36710 has 15 MA's), (22, 36713), (30, 36749), (46, 36836), (62, 36926),

Gene: UncleHowie_40 Start: 36313, Stop: 36624, Start Num: 7

Candidate Starts for UncleHowie_40:

(Start: 6 @36310 has 99 MA's), (Start: 7 @36313 has 222 MA's), (Start: 16 @36376 has 8 MA's), (19, 36391), (Start: 21 @36400 has 15 MA's), (22, 36403), (30, 36439), (46, 36526), (62, 36616),

Gene: Usavi_40 Start: 36614, Stop: 36925, Start Num: 7

Candidate Starts for Usavi_40:

(Start: 6 @36611 has 99 MA's), (Start: 7 @36614 has 222 MA's), (Start: 16 @36677 has 8 MA's), (19, 36692), (Start: 21 @36701 has 15 MA's), (22, 36704), (30, 36740), (46, 36827), (62, 36917),

Gene: Vaishali24_39 Start: 36275, Stop: 36586, Start Num: 7

Candidate Starts for Vaishali24_39:

(Start: 6 @36272 has 99 MA's), (Start: 7 @36275 has 222 MA's), (Start: 16 @36338 has 8 MA's), (19, 36353), (Start: 21 @36362 has 15 MA's), (22, 36365), (30, 36401), (46, 36488), (62, 36578),

Gene: Valjean_40 Start: 36606, Stop: 36917, Start Num: 7

Candidate Starts for Valjean_40:

(Start: 6 @36603 has 99 MA's), (Start: 7 @36606 has 222 MA's), (Start: 16 @36669 has 8 MA's), (19, 36684), (Start: 21 @36693 has 15 MA's), (22, 36696), (30, 36732), (46, 36819), (62, 36909),

Gene: Veritas_39 Start: 36176, Stop: 36487, Start Num: 7

Candidate Starts for Veritas_39:

(Start: 6 @36173 has 99 MA's), (Start: 7 @36176 has 222 MA's), (Start: 16 @36239 has 8 MA's), (19, 36254), (Start: 21 @36263 has 15 MA's), (22, 36266), (30, 36302), (46, 36389), (62, 36479),

Gene: Vincenzo_38 Start: 37651, Stop: 37962, Start Num: 7

Candidate Starts for Vincenzo_38:

(Start: 6 @37648 has 99 MA's), (Start: 7 @37651 has 222 MA's), (Start: 9 @37675 has 1 MA's), (Start: 16 @37714 has 8 MA's), (19, 37729), (20, 37735), (Start: 21 @37738 has 15 MA's), (24, 37750), (26, 37759), (30, 37777), (37, 37816), (52, 37885), (55, 37918),

Gene: VioletZ_37 Start: 36999, Stop: 37310, Start Num: 7

Candidate Starts for VioletZ_37:

(Start: 6 @36996 has 99 MA's), (Start: 7 @36999 has 222 MA's), (Start: 16 @37062 has 8 MA's), (19, 37077), (20, 37083), (Start: 21 @37086 has 15 MA's), (24, 37098), (30, 37125), (37, 37164), (45, 37209), (46, 37212), (55, 37266), (58, 37290),

Gene: Virapocalypse_40 Start: 36601, Stop: 36912, Start Num: 7

Candidate Starts for Virapocalypse_40:

(Start: 6 @36598 has 99 MA's), (Start: 7 @36601 has 222 MA's), (Start: 16 @36664 has 8 MA's), (19, 36679), (Start: 21 @36688 has 15 MA's), (22, 36691), (30, 36727), (46, 36814), (62, 36904),

Gene: Virgeve_39 Start: 36381, Stop: 36692, Start Num: 7

Candidate Starts for Virgeve_39:

(Start: 6 @36378 has 99 MA's), (Start: 7 @36381 has 222 MA's), (Start: 16 @36444 has 8 MA's), (19, 36459), (Start: 21 @36468 has 15 MA's), (22, 36471), (30, 36507), (46, 36594), (62, 36684),

Gene: Vista_40 Start: 36611, Stop: 36925, Start Num: 6

Candidate Starts for Vista_40:

(Start: 6 @36611 has 99 MA's), (Start: 7 @36614 has 222 MA's), (Start: 16 @36677 has 8 MA's), (19, 36692), (Start: 21 @36701 has 15 MA's), (22, 36704), (30, 36740), (46, 36827), (62, 36917),

Gene: Vivaldi_40 Start: 36640, Stop: 36954, Start Num: 6

Candidate Starts for Vivaldi_40:

(Start: 6 @36640 has 99 MA's), (Start: 7 @36643 has 222 MA's), (Start: 16 @36706 has 8 MA's), (19, 36721), (Start: 21 @36730 has 15 MA's), (22, 36733), (30, 36769), (46, 36856), (62, 36946),

Gene: Vortex_40 Start: 36320, Stop: 36631, Start Num: 7

Candidate Starts for Vortex_40:

(Start: 6 @36317 has 99 MA's), (Start: 7 @36320 has 222 MA's), (Start: 16 @36383 has 8 MA's), (19, 36398), (Start: 21 @36407 has 15 MA's), (22, 36410), (30, 36446), (46, 36533), (62, 36623),

Gene: Waleliano_37 Start: 36926, Stop: 37237, Start Num: 7

Candidate Starts for Waleliano_37:

(Start: 6 @36923 has 99 MA's), (Start: 7 @36926 has 222 MA's), (Start: 16 @36989 has 8 MA's), (19, 37004), (20, 37010), (Start: 21 @37013 has 15 MA's), (24, 37025), (30, 37052), (37, 37091), (45, 37136), (46, 37139), (55, 37193), (58, 37217),

Gene: Wallhey_39 Start: 36174, Stop: 36488, Start Num: 6

Candidate Starts for Wallhey_39:

(Start: 6 @36174 has 99 MA's), (Start: 7 @36177 has 222 MA's), (Start: 16 @36240 has 8 MA's), (19, 36255), (Start: 21 @36264 has 15 MA's), (22, 36267), (30, 36303), (46, 36390),

Gene: Waterdiva_40 Start: 36603, Stop: 36917, Start Num: 6

Candidate Starts for Waterdiva_40:

(Start: 6 @36603 has 99 MA's), (Start: 7 @36606 has 222 MA's), (Start: 16 @36669 has 8 MA's), (19, 36684), (Start: 21 @36693 has 15 MA's), (22, 36696), (30, 36732), (46, 36819), (62, 36909),

Gene: Weher20_40 Start: 36605, Stop: 36916, Start Num: 7

Candidate Starts for Weher20_40:

(Start: 6 @36602 has 99 MA's), (Start: 7 @36605 has 222 MA's), (Start: 16 @36668 has 8 MA's), (19, 36683), (Start: 21 @36692 has 15 MA's), (30, 36731), (46, 36818),

Gene: West99_41 Start: 37896, Stop: 38216, Start Num: 7

Candidate Starts for West99_41:

(Start: 4 @37851 has 26 MA's), (Start: 6 @37893 has 99 MA's), (Start: 7 @37896 has 222 MA's), (11, 37932), (Start: 16 @37959 has 8 MA's), (19, 37974), (24, 37995), (32, 38034), (54, 38157), (55, 38169), (60, 38199),

Gene: Windsor_39 Start: 36310, Stop: 36621, Start Num: 7

Candidate Starts for Windsor_39:

(Start: 6 @36307 has 99 MA's), (Start: 7 @36310 has 222 MA's), (Start: 16 @36373 has 8 MA's), (19, 36388), (Start: 21 @36397 has 15 MA's), (22, 36400), (30, 36436), (46, 36523), (62, 36613),

Gene: Wooper_35 Start: 31651, Stop: 31965, Start Num: 5

Candidate Starts for Wooper_35:

(Start: 5 @31651 has 15 MA's), (27, 31783), (28, 31786), (29, 31795), (44, 31867), (55, 31924),

Gene: Xavier_39 Start: 36327, Stop: 36638, Start Num: 7

Candidate Starts for Xavier_39:

(Start: 6 @36324 has 99 MA's), (Start: 7 @36327 has 222 MA's), (Start: 16 @36390 has 8 MA's), (19, 36405), (Start: 21 @36414 has 15 MA's), (22, 36417), (30, 36453), (46, 36540), (62, 36630),

Gene: Yago84_33 Start: 30634, Stop: 30945, Start Num: 5

Candidate Starts for Yago84_33:

(3, 30427), (Start: 5 @30634 has 15 MA's), (27, 30766), (28, 30769), (55, 30904),

Gene: Yahalom_40 Start: 37273, Stop: 37596, Start Num: 7

Candidate Starts for Yahalom_40:

(2, 36985), (Start: 7 @37273 has 222 MA's), (Start: 21 @37360 has 15 MA's), (47, 37483), (52, 37504), (58, 37564), (61, 37573),

Gene: Yinz_40 Start: 37299, Stop: 37622, Start Num: 7

Candidate Starts for Yinz_40:

(2, 37011), (Start: 7 @37299 has 222 MA's), (Start: 21 @37386 has 15 MA's), (47, 37509), (52, 37530), (58, 37590), (61, 37599),

Gene: Yoshand_40 Start: 36613, Stop: 36924, Start Num: 7

Candidate Starts for Yoshand_40:

(Start: 6 @36610 has 99 MA's), (Start: 7 @36613 has 222 MA's), (Start: 16 @36676 has 8 MA's), (19, 36691), (Start: 21 @36700 has 15 MA's), (22, 36703), (30, 36739), (46, 36826), (62, 36916),

Gene: YouGoGlencoco_40 Start: 36605, Stop: 36919, Start Num: 6

Candidate Starts for YouGoGlencoco_40:

(Start: 6 @36605 has 99 MA's), (Start: 7 @36608 has 222 MA's), (Start: 16 @36671 has 8 MA's), (19, 36686), (Start: 21 @36695 has 15 MA's), (22, 36698), (30, 36734), (46, 36821), (62, 36911),

Gene: Zaider_41 Start: 36835, Stop: 37149, Start Num: 6

Candidate Starts for Zaider_41:

(Start: 6 @36835 has 99 MA's), (Start: 7 @36838 has 222 MA's), (Start: 16 @36901 has 8 MA's), (19, 36916), (Start: 21 @36925 has 15 MA's), (22, 36928), (30, 36964), (46, 37051), (62, 37141),

Gene: Zelda_40 Start: 36655, Stop: 36966, Start Num: 7

Candidate Starts for Zelda_40:

(Start: 6 @36652 has 99 MA's), (Start: 7 @36655 has 222 MA's), (Start: 16 @36718 has 8 MA's), (19, 36733), (Start: 21 @36742 has 15 MA's), (22, 36745), (30, 36781), (46, 36868), (62, 36958),

Gene: Zemanar_38 Start: 36929, Stop: 37240, Start Num: 7

Candidate Starts for Zemanar_38:

(Start: 6 @36926 has 99 MA's), (Start: 7 @36929 has 222 MA's), (Start: 16 @36992 has 8 MA's), (19, 37007), (20, 37013), (Start: 21 @37016 has 15 MA's), (24, 37028), (30, 37055), (37, 37094), (45, 37139), (46, 37142), (55, 37196), (58, 37220),

Gene: Zenteno07_44 Start: 36234, Stop: 36545, Start Num: 7

Candidate Starts for Zenteno07_44:

(Start: 6 @36231 has 99 MA's), (Start: 7 @36234 has 222 MA's), (Start: 16 @36297 has 8 MA's), (19, 36312), (23, 36330), (36, 36396), (42, 36435), (62, 36537),

Gene: Zonia_40 Start: 36627, Stop: 36938, Start Num: 7

Candidate Starts for Zonia_40:

(Start: 6 @36624 has 99 MA's), (Start: 7 @36627 has 222 MA's), (Start: 16 @36690 has 8 MA's), (19, 36705), (Start: 21 @36714 has 15 MA's), (22, 36717), (30, 36753), (46, 36840),