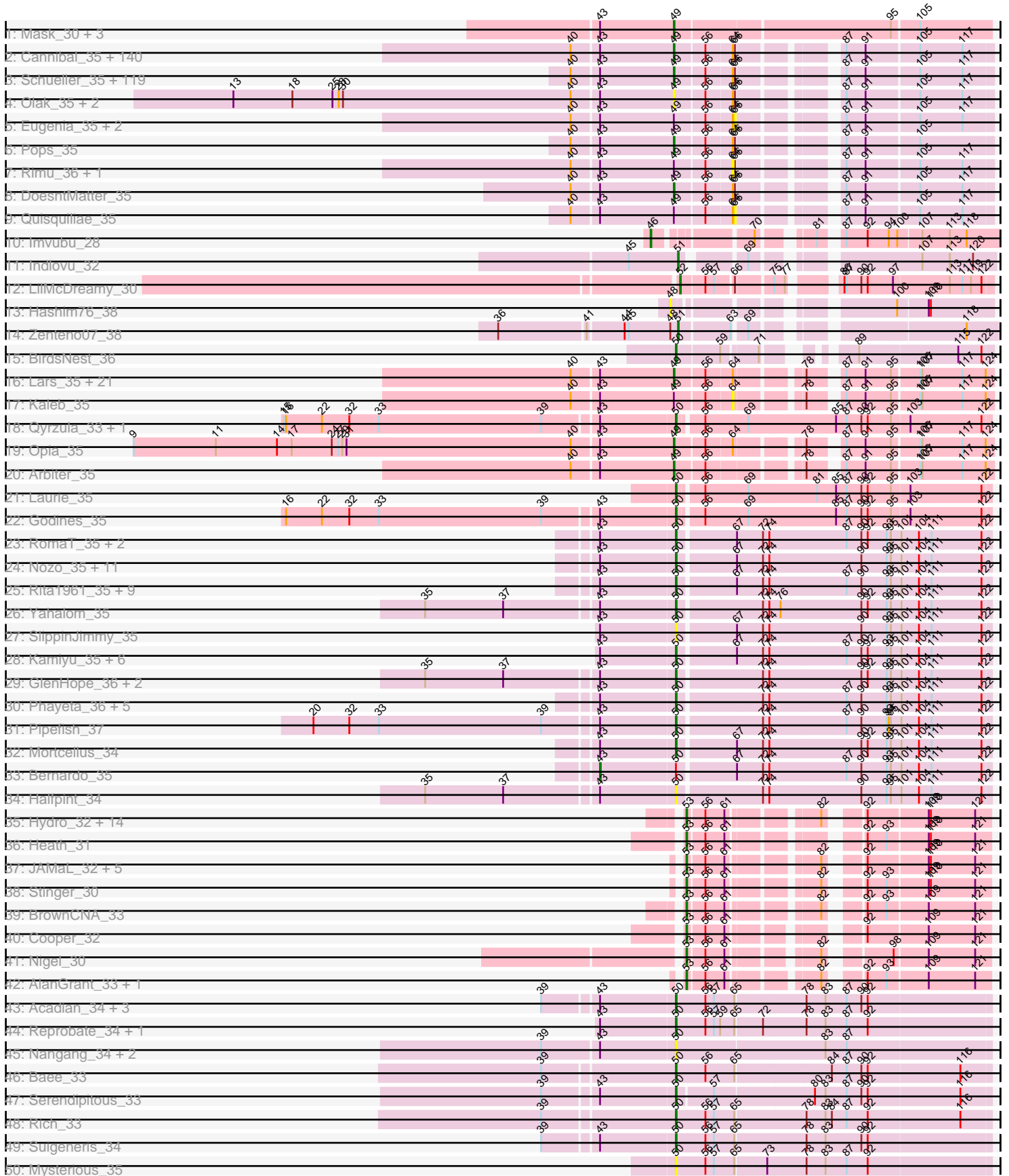
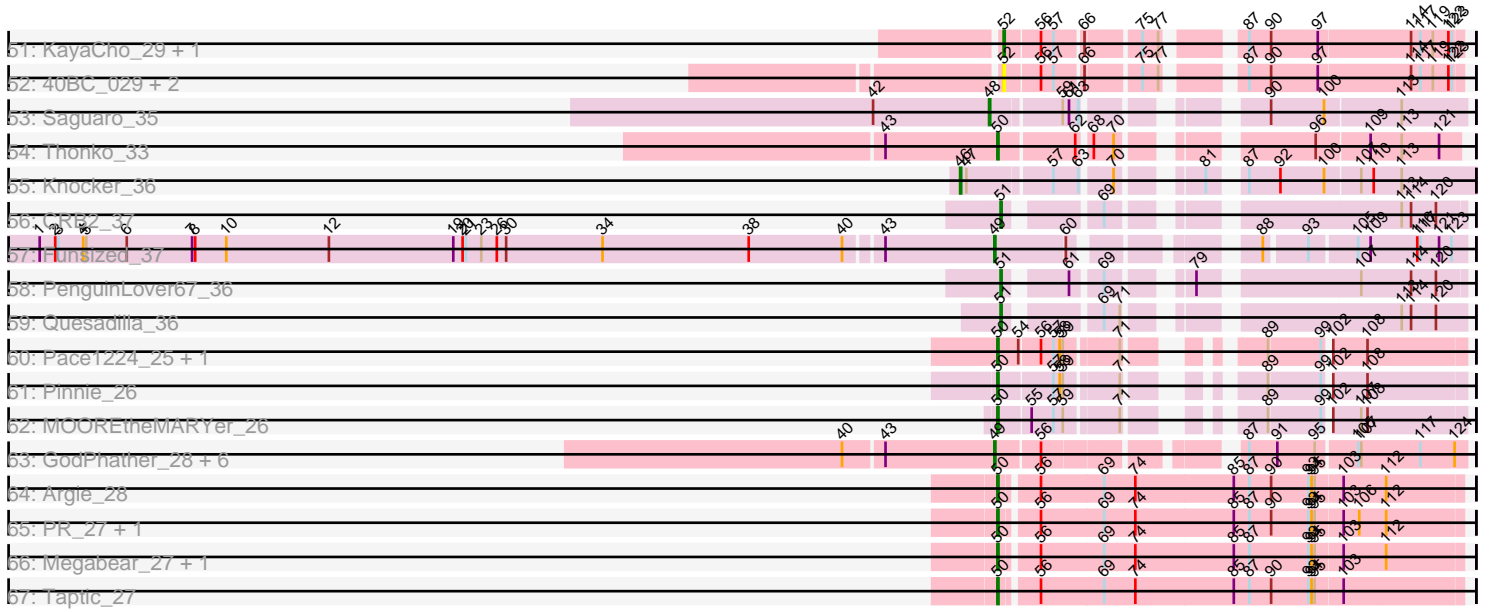


Pham 157491



Pham 157491



Note: Tracks are now grouped by subcluster and scaled. Switching in subcluster is indicated by changes in track color. Track scale is now set by default to display the region 30 bp upstream of start 1 to 30 bp downstream of the last possible start. If this default region is judged to be packed too tightly with annotated starts, the track will be further scaled to only show that region of the ORF with annotated starts. This action will be indicated by adding "Zoomed" to the title. For starts, yellow indicates the location of called starts comprised solely of Glimmer/GeneMark auto-annotations, green indicates the location of called starts with at least 1 manual gene annotation.

Pham 157491 Report

This analysis was run 04/13/24 on database version 558.

Pham number 157491 has 429 members, 49 are drafts.

Phages represented in each track:

- Track 1 : Mask_30, Dori_31, Mao1_29, Sejanus_30
- Track 2 : Cannibal_35, Gophee_35, Mana_34, Kwksand96_34, Murdoc_35, Podrick_35, Riggan_35, Durga_35, Puhltonio_35, MelsMeow_34, Lasso_35, LostAndPhound_34, Sheila_35, Mecca_34, Samaymay_35, Ashraf_34, Scrick_35, Haleema_34, Timmi_34, Andre_35, TomBombadil_35, Bishoperium_34, Craff_35, Phipps_35, Lulwa_35, Potter_34, Emiris_35, PhrodoBaggins_34, Kwadwo_34, Cobra_35, Megatron_35, Dingo_35, LeeLot_35, Vaticameos_35, Bluephacebaby_34, Harvey_35, Anderson_35, Charles1_35, GeneCoco_35, Chah_36, Telesworld_34, QueenBeane_35, Fozzie_34, Banjo_34, Held_35, Lego3393_35, Lumine_34, Oosterbaan_35, Longacauda_34, Chunky_35, Matalotodo_34, Phareon_35, KingVeVeVe_35, LeiMonet_35, Pacifista_36, Inverness_35, Gyarad_0035, Zelda_35, LemonSlice_35, Magic8_35, Roliet_35, Legolas_34, LuckyMarjie_34, Thora_35, MRabcd_34, HighStump_34, Basato_36, Frankicide_35, Apizium_34, Dice_36, Zaider_36, Cher_34, Altwerkus_34, Beaglebox_34, Hocus_34, OSmaximus_35, Dione_34, Brilliant_35, Skippy_35, CamL_35, Étaye_35, Squiggle_35, PImatters_35, True_34, Megamind20_35, Newman_35, Trypo_35, Soto_35, Simielle_34, Piglet_0034, Morty_35, Phunky_35, Weher20_35, Fringe_35, Numberten_35, BlueHusk_35, Hamish_35, Pinkman_34, Vista_35, OliverWalter_35, ImtiyazSitla_34, Toni_34, Mutante_34, Melc17_35, CheetO_35, Labeouficaum_34, Nacho_0035, CharlieGBrown_34, DelRivs_34, Serpentine_0035, Haimas_35, KlimbOn_35, MitKao_35, Mikota_35, Xavier_34, Nicole21_35, Slatt_35, Mosaic_34, Virapocalypse_35, Maru_34, Burr_34, Inchworm_35, UncleHowie_35, Dati_35, Childish_34, Iridoclysis_35, MiniBoss_35, Soile_35, Mulan_34, Oline_34, Maskar_34, Orwigg_35, JangoPhett_35, DirtJuice_35, Derpp_34, TyrionL_34, Zonia_35, Pipsqueak_35, SDcharge11_35, Gareth_34, Wallhey_34
- Track 3 : Schueller_35, Kailash_35, KingTut_26, Manad_34, Morgushi_35, Freya_34, Scoot17C_35, Sigman_35, BlackStallion_35, Mesh1_35, UAch1_35, Schadenfreude_34, Lulumae_34, AltPhacts_35, Orion_35, Coletti_34, FriarPreacher_35, JDog_35, Mag7_34, Robyn_34, PinheadLarry_35, Lopsy_34, Tooj_35, Chute_34, ProfessorX_35, Chaelin_35, CampRoach_34, Tomlarah_35, SassyCat97_34, Vortex_35, RedMaple_34, Omniscient_35, Jiminy_34, Kloppinator_35, Badfish_35, Adriana_35, Kimbrough_35, Giraffe_35, Nyala_34, Colbert_35, Kahve_34, Usavi_35, YouGoGlencoco_35, Cosmolli16_34, DonSanchon_34, Mcshane_34, HSavage_35, TallGrassMM_35, Phergie_34, Eremos_35, Daka_35, LasagnaCat_35, Carthage_33, JacAttac_35, EmpTee_35, ShiVal_35, Veritas_34, Swiphy_36, Katniss_35, Doddsville_35, Antonia_34, HenryJackson_34, PhatCats2014_35, Hartsy_34, JakeO_34, Squid_35, Daffy_35,

Roscoe_36, PG1_35, Struggle_34, Phamished_35, Cornobble_34, ABU_35, FugateOSU_34, Vaishali24_34, Windsor_34, FluffyNinja_35, Keitherie_35, Hertubise_35, Virgeve_34, PhatLouie_35, Swish_35, Vivaldi_35, PhrankReynolds_34, Waterdiva_35, Serendipity_35, Aelin_34, Phleuron_34, Roy17_35, Placalicious_34, IsaacEli_35, Spartan300_35, Suffolk_35, PhenghisKhan_34, Jillium_34, Sophia_34, Grand2040_34, Surely_35, Chorkpop_35, Hetaeria_35, DuchessDung_33, ThreeOh3D2_35, Solosis_34, Crownjwl_35, Kikipoo_35, Valjean_35, Yoshand_35, DaddyDaniels_35, BatteryCK_34, Olive_35, Prickles_35, Pherdinand_35, Horchata_35, Boehler_35, KLucky39_35, AbsoluteMadLad_34, Fang_35, Buckeye_35, Duggie_34, MichaelPhcott_34

- Track 4 : Olak_35, Selr12_35, Ricotta_35
- Track 5 : Eugenia_35, Gwilliam_35, Orfeu_34
- Track 6 : Pops_35
- Track 7 : Rimu_36, MrPhizzler_34
- Track 8 : DoesntMatter_35
- Track 9 : Quisquiliae_35
- Track 10 : Imvubu_28
- Track 11 : Indlovu_32
- Track 12 : LilMcDreamy_30
- Track 13 : Hashim76_38
- Track 14 : Zenteno07_38
- Track 15 : BirdsNest_36
- Track 16 : Lars_35, Rosebush_35, Coffee_35, Glass_35, Allegro_35, Sabella_35, MasterPo_35, Boyle_35, Kheth_35, Holeinone_35, Hedgerow_35, Blocker23_35, West99_35, ItsyBitsy1_35, Lephleur_35, FrenchFry_35, Calamitous_35, Rhinoforte_35, Eaglehorse_35, Tinciduntolum_36, Tres_35, Brownie5_35
- Track 17 : Kaleb_35
- Track 18 : Qyrzula_33, Ares_35
- Track 19 : Opia_35
- Track 20 : Arbiter_35
- Track 21 : Laurie_35
- Track 22 : Godines_35
- Track 23 : RomaT_35, Akoma_35, Daisy_35
- Track 24 : Nozo_35, ChaChing_35, Athena_36, Morty007_35, Heathcliff_35, Marley1013_35, OrangeOswald_35, Deenasa_35, Audrey_35, Neos5_35, Baloo_35, Corofin_35
- Track 25 : Rita1961_35, Tydolla_35, Devonte_35, Chandler_35, Abinghost_35, Obutu_35, MmasiCarm_35, RagingRooster_35, SynergyX_35, Philly_34
- Track 26 : Yahalom_35
- Track 27 : SlippinJimmy_35
- Track 28 : Kamiyu_35, Phlyer_35, Gadget_36, Yinz_35, Phaedrus_33, Briakila_36, HarveySr_35
- Track 29 : GlenHope_36, Jackstina_32, Compostia_36
- Track 30 : Phayeta_36, Gervas_35, LestyG_35, Casbah_34, Ben11_34, Kronus_34
- Track 31 : Pipefish_37
- Track 32 : Mortcellus_34
- Track 33 : Bernardo_35
- Track 34 : Halfpint_34
- Track 35 : Hydro_32, JaguarMi_32, RawrgerThat_32, Mithril_32, Lolalove_32, Zemanar_33, Waleliano_32, Hangman_32, BobbyK_32, Austelle_33, VioletZ_32, Fortunato_32, Apex_32, Mudslide_32, Frederick_32
- Track 36 : Heath_31

- Track 37 : JAMaL_32, Prince_33, Nanao_31, ChrisnMich_31, Magpie_31, Poster_31
- Track 38 : Stinger_30
- Track 39 : BrownCNA_33
- Track 40 : Cooper_32
- Track 41 : Nigel_30
- Track 42 : AlanGrant_33, Vincenzo_33
- Track 43 : Acadian_34, EastView9101_34, Donny_34, SirJeffery_34
- Track 44 : Reprobate_34, Phelemich_34
- Track 45 : Nangang_34, StinkyVeggy_36, DigitDog_34
- Track 46 : Bae_33
- Track 47 : Serendipitous_33
- Track 48 : Rich_33
- Track 49 : Suigeneris_34
- Track 50 : Mysterious_35
- Track 51 : KayaCho_29, Jolie1_029
- Track 52 : 40BC_029, Hosp_027, 39HC_029
- Track 53 : Saguaro_35
- Track 54 : Thonko_33
- Track 55 : Knocker_36
- Track 56 : CRB2_37
- Track 57 : Funsized_37
- Track 58 : PenguinLover67_36
- Track 59 : Quesadilla_36
- Track 60 : Pace1224_25, FlagStaff_25
- Track 61 : Pinnie_26
- Track 62 : MOOREtheMARYer_26
- Track 63 : GodPhather_28, TA17A_35, Bananafish_35, LizLemon_35, Phantasmagoria_35, Jeon_27, Faze9_35
- Track 64 : Argie_28
- Track 65 : PR_27, D12_27
- Track 66 : Megabear_27, Cepens_27
- Track 67 : Taptic_27

Summary of Final Annotations (See graph section above for start numbers):

The start number called the most often in the published annotations is 49, it was called in 281 of the 380 non-draft genes in the pham.

Genes that call this "Most Annotated" start:

- ABU_35, AbsoluteMadLad_34, Adriana_35, Aelin_34, Allegro_35, AltPhacts_35, Altwerkus_34, Anderson_35, Andre_35, Antonia_34, Apizium_34, Arbiter_35, Ashraf_34, Badfish_35, Bananafish_35, Banjo_34, Basato_36, BatteryCK_34, Beaglebox_34, Bishoperium_34, BlackStallion_35, Blocker23_35, BlueHusk_35, Bluephacebaby_34, Boehler_35, Boyle_35, Brilliant_35, Brownie5_35, Buckeye_35, Burr_34, Calamitous_35, CamL_35, CampRoach_34, Cannibal_35, Carthage_33, Chaelin_35, Chah_36, Charles1_35, CharlieGBrown_34, CheetO_35, Cher_34, Childish_34, Chorkpop_35, Chunky_35, Chute_34, Cobra_35, Coffee_35, Colbert_35, Coletti_34, Cornobble_34, Cosmolli16_34, Craff_35, Crownjwl_35, DaddyDaniels_35, Daffy_35, Daka_35, Dati_35, DelRivs_34, Derpp_34, Dice_36,

Dingo_35, Dione_34, DirtJuice_35, Doddsville_35, DoesntMatter_35, DonSanchon_34, Dori_31, DuchessDung_33, Duggie_34, Durga_35, Eaglehorse_35, Emiris_35, EmpTee_35, Eremos_35, Etaye_35, Fang_35, Faze9_35, FluffyNinja_35, Fozzie_34, Frankicide_35, FrenchFry_35, Freya_34, FriarPreacher_35, Fringe_35, FugateOSU_34, Funsized_37, Gareth_34, GeneCoco_35, Giraffe_35, Glass_35, GodPhather_28, Gophee_35, Grand2040_34, Gyarad_0035, HSavage_35, Haimas_35, Haleema_34, Hamish_35, Hartsy_34, Harvey_35, Hedgerow_35, Held_35, HenryJackson_34, Hertubise_35, Hetaeria_35, HighStump_34, Hocus_34, Holeinone_35, Horchata_35, ImtiyazSitla_34, Inchworm_35, Inverness_35, Iridoclysis_35, IsaacEli_35, ItsyBitsy1_35, JDog_35, JacAttac_35, JakeO_34, JangoPhett_35, Jeon_27, Jillium_34, Jiminy_34, KLucky39_35, Kahve_34, Kailash_35, Katniss_35, Keitherie_35, Kheth_35, Kikipoo_35, Kimbrough_35, KingTut_26, KingVeVeVe_35, KlimbOn_35, Kloppinator_35, Kwadwo_34, Kwksand96_34, Labeouficaum_34, Lars_35, LasagnaCat_35, Lasso_35, LeeLot_35, Lego3393_35, Legolas_34, LeiMonet_35, LemonSlice_35, Lephleur_35, LizLemon_35, Longacauda_34, Lopsy_34, LostAndPhound_34, LuckyMarjie_34, Lulumae_34, Lulwa_35, Lumine_34, MRabcd_34, Mag7_34, Magic8_35, Mana_34, Manad_34, Mao1_29, Maru_34, Mask_30, Maskar_34, MasterPo_35, Matalotodo_34, Mcshane_34, Mecca_34, Megamind20_35, Megatron_35, Melc17_35, MelsMeow_34, Mesh1_35, MichaelPhcott_34, Mikota_35, MiniBoss_35, MitKao_35, Morgushi_35, Morty_35, Mosaic_34, Mulan_34, Murdoc_35, Mutante_34, Nacho_0035, Newman_35, Nicole21_35, Numberben_35, Nyala_34, OSmaximus_35, Olak_35, Oline_34, Olive_35, OliverWalter_35, Omniscient_35, Oosterbaan_35, Opia_35, Orion_35, Orwigg_35, PG1_35, Pacifista_36, Phamished_35, Phantasmagoria_35, Phareon_35, PhatCats2014_35, PhatLouie_35, Phenghiskhan_34, Pherdinand_35, Phergie_34, Phipps_35, Phleuron_34, PhrankReynolds_34, PhrodoBaggins_34, Phunky_35, Piglet_0034, PinheadLarry_35, Pinkman_34, Pipsqueak_35, Placalicious_34, Plmatters_35, Podrick_35, Pops_35, Potter_34, Prickles_35, ProfessorX_35, Puhltonio_35, QueenBeane_35, RedMaple_34, Rhinoforte_35, Ricotta_35, Riggan_35, Robyn_34, Roliet_35, Roscoe_36, Rosebush_35, Roy17_35, SDcharge11_35, Sabella_35, Samaymay_35, SassyCat97_34, Schadenfreude_34, Schueller_35, Scoot17C_35, Scrick_35, Sejanus_30, Selr12_35, Serendipity_35, Serpentine_0035, Sheila_35, ShiVal_35, Sigman_35, Simielle_34, Skippy_35, Slatt_35, Soile_35, Solosis_34, Sophia_34, Soto_35, Spartan300_35, Squid_35, Squiggle_35, Struggle_34, Suffolk_35, Surely_35, Swiphy_36, Swish_35, TA17A_35, TallGrassMM_35, Telesworld_34, Thora_35, ThreeOh3D2_35, Timmi_34, Tinciduntolum_36, TomBombadil_35, Tomlarah_35, Toni_34, Tooj_35, Tres_35, True_34, Trypo_35, TyrionL_34, UAch1_35, UncleHowie_35, Usavi_35, Vaishali24_34, Valjean_35, Vaticameos_35, Veritas_34, Virapocalypse_35, Virgeve_34, Vista_35, Vivaldi_35, Vortex_35, Wallhey_34, Waterdiva_35, Weher20_35, West99_35, Windsor_34, Xavier_34, Yoshand_35, YouGoGlencoco_35, Zaider_36, Zelda_35, Zonia_35,

Genes that have the "Most Annotated" start but do not call it:

- Eugenia_35, Gwilliam_35, Kaleb_35, MrPhizzler_34, Orfeu_34, Quisquilliae_35, Rimu_36,

Genes that do not have the "Most Annotated" start:

- 39HC_029, 40BC_029, Abinghost_35, Acadian_34, Akoma_35, AlanGrant_33, Apex_32, Ares_35, Argie_28, Athena_36, Audrey_35, Austelle_33, Bae_33, Baloo_35, Ben11_34, Bernardo_35, BirdsNest_36, BobbyK_32, Briakila_36, BrownCNA_33, CRB2_37, Casbah_34, Cepens_27, ChaChing_35, Chandler_35, ChrisnMich_31, Compostia_36, Cooper_32, Corofin_35, D12_27, Daisy_35,

Deenasa_35, Devonte_35, DigitDog_34, Donny_34, EastView9101_34, FlagStaff_25, Fortunato_32, Frederick_32, Gadget_36, Gervas_35, GlenHope_36, Godines_35, Halfpint_34, Hangman_32, HarveySr_35, Hashim76_38, Heath_31, Heathcliff_35, Hosp_027, Hydro_32, Imvubu_28, Indlovu_32, JAMaL_32, Jackstina_32, JaguarMi_32, Jolie1_029, Kamiyu_35, KayaCho_29, Knocker_36, Kronus_34, Laurie_35, LestyG_35, LilMcDreamy_30, Lolalove_32, MOOREtheMARYer_26, Magpie_31, Marley1013_35, Megabear_27, Mithril_32, MmasiCarm_35, Mortcellus_34, Morty007_35, Mudslide_32, Mysterious_35, Nanao_31, Nangang_34, Neos5_35, Nigel_30, Nozo_35, Obutu_35, OrangeOswald_35, PR_27, Pace1224_25, PenguinLover67_36, Phaedrus_33, Phayeta_36, Phelemich_34, Philly_34, Phlyer_35, Pinnie_26, Pipefish_37, Poster_31, Prince_33, Quesadilla_36, Qyrzula_33, RagingRooster_35, RawrgerThat_32, Reprobate_34, Rich_33, Rita1961_35, RomaT_35, Saguario_35, Serendipitous_33, SirJeffery_34, SlippinJimmy_35, Stinger_30, StinkyVeggy_36, Suigeneris_34, SynergyX_35, Taptic_27, Thonko_33, Tydolla_35, Vincenzo_33, VioletZ_32, Waleliano_32, Yahalom_35, Yinz_35, Zemanar_33, Zenteno07_38,

Summary by start number:

Start 43:

- Found in 371 of 429 (86.5%) of genes in pham
- Manual Annotations of this start: 1 of 380
- Called 0.3% of time when present
- Phage (with cluster) where this start called: Bernardo_35 (B3),

Start 46:

- Found in 2 of 429 (0.5%) of genes in pham
- Manual Annotations of this start: 2 of 380
- Called 100.0% of time when present
- Phage (with cluster) where this start called: Imvubu_28 (B10), Knocker_36 (B9),

Start 48:

- Found in 3 of 429 (0.7%) of genes in pham
- Manual Annotations of this start: 1 of 380
- Called 66.7% of time when present
- Phage (with cluster) where this start called: Hashim76_38 (B13), Saguario_35 (B7),

Start 49:

- Found in 309 of 429 (72.0%) of genes in pham
- Manual Annotations of this start: 281 of 380
- Called 97.7% of time when present
- Phage (with cluster) where this start called: ABU_35 (B1), AbsoluteMadLad_34 (B1), Adriana_35 (B1), Aelin_34 (B1), Allegro_35 (B2), AltPhacts_35 (B1), Altwerkus_34 (B1), Anderson_35 (B1), Andre_35 (B1), Antonia_34 (B1), Apizium_34 (B1), Arbiter_35 (B2), Ashraf_34 (B1), Badfish_35 (B1), Bananafish_35 (B2), Banjo_34 (B1), Basato_36 (B1), BatteryCK_34 (B1), Beaglebox_34 (B1), Bishoperium_34 (B1), BlackStallion_35 (B1), Blocker23_35 (B2), BlueHusk_35 (B1), Bluephacebaby_34 (B1), Boehler_35 (B1), Boyle_35 (B2), Brilliant_35 (B1), Brownie5_35 (B2), Buckeye_35 (B1), Burr_34 (B1), Calamitous_35 (B2), CamL_35 (B1), CampRoach_34 (B1), Cannibal_35 (B1), Carthage_33 (B1), Chaelin_35 (B1), Chah_36 (B1), Charles1_35 (B1), CharlieGBrown_34 (B1), CheetO_35 (B1), Cher_34 (B1), Childish_34 (B1), Chorkpop_35 (B1), Chunky_35 (B1), Chute_34 (B1), Cobra_35 (B1), Coffee_35 (B2), Colbert_35 (B1), Coletti_34 (B1), Cornobble_34

(B1), Cosmolli16_34 (B1), Craff_35 (B1), Crownjwl_35 (B1), DaddyDaniels_35 (B1), Daffy_35 (B1), Daka_35 (B1), Dati_35 (B1), DelRivs_34 (B1), Derpp_34 (B1), Dice_36 (B1), Dingo_35 (B1), Dione_34 (B1), DirtJuice_35 (B1), Doddsville_35 (B1), DoesntMatter_35 (B1), DonSanchon_34 (B1), Dori_31 (AD), DuchessDung_33 (B1), Duggie_34 (B1), Durga_35 (B1), Eaglehorse_35 (B2), Emiris_35 (B1), EmpTee_35 (B1), Eremos_35 (B1), Etaye_35 (B1), Fang_35 (B1), Faze9_35 (B2), FluffyNinja_35 (B1), Fozzie_34 (B1), Frankicide_35 (B1), FrenchFry_35 (B2), Freya_34 (B1), FriarPreacher_35 (B1), Fringe_35 (B1), FugateOSU_34 (B1), Funsized_37 (B9), Gareth_34 (B1), GeneCoco_35 (B1), Giraffe_35 (B1), Glass_35 (B2), GodPhather_28 (W), Gophee_35 (B1), Grand2040_34 (B1), Gyarad_0035 (B1), HSavage_35 (B1), Haimas_35 (B1), Haleema_34 (B1), Hamish_35 (B1), Hartsy_34 (B1), Harvey_35 (B1), Hedgerow_35 (B2), Held_35 (B1), HenryJackson_34 (B1), Hertubise_35 (B1), Hetaeria_35 (B1), HighStump_34 (B1), Hocus_34 (B1), Holeinone_35 (B2), Horchata_35 (B1), ImtiyazSitla_34 (B1), Inchworm_35 (B1), Inverness_35 (B1), Iridoclysis_35 (B1), IsaacEli_35 (B1), ItsyBitsy1_35 (B2), JDog_35 (B1), JacAttac_35 (B1), JakeO_34 (B1), JangoPhett_35 (B1), Jeon_27 (W), Jillium_34 (B1), Jiminy_34 (B1), KLucky39_35 (B1), Kahve_34 (B1), Kailash_35 (B1), Katniss_35 (B1), Keitherie_35 (B1), Kheth_35 (B2), Kikipoo_35 (B1), Kimbrough_35 (B1), KingTut_26 (B1), KingVeVeVe_35 (B1), KlimbOn_35 (B1), Kloppinator_35 (B1), Kwadwo_34 (B1), Kwksand96_34 (B1), Labeouficaum_34 (B1), Lars_35 (B2), LasagnaCat_35 (B1), Lasso_35 (B1), LeeLot_35 (B1), Lego3393_35 (B1), Legolas_34 (B1), LeiMonet_35 (B1), LemonSlice_35 (B1), Lephleur_35 (B2), LizLemon_35 (B2), Longacauda_34 (B1), Lopsy_34 (B1), LostAndPhound_34 (B1), LuckyMarjie_34 (B1), Lulumae_34 (B1), Lulwa_35 (B1), Lumine_34 (B1), MRabcd_34 (B1), Mag7_34 (B1), Magic8_35 (B1), Mana_34 (B1), Manad_34 (B1), Mao1_29 (AD), Maru_34 (B1), Mask_30 (AD), Maskar_34 (B1), MasterPo_35 (B2), Matalotodo_34 (B1), Mcshane_34 (B1), Mecca_34 (B1), Megamind20_35 (B1), Megatron_35 (B1), Melc17_35 (B1), MelsMeow_34 (B1), Mesh1_35 (B1), MichaelPhcott_34 (B1), Mikota_35 (B1), MiniBoss_35 (B1), MitKao_35 (B1), Morgushi_35 (B1), Morty_35 (B1), Mosaic_34 (B1), Mulan_34 (B1), Murdoc_35 (B1), Mutante_34 (B1), Nacho_0035 (B1), Newman_35 (B1), Nicole21_35 (B1), Numberten_35 (B1), Nyala_34 (B1), OSmaximus_35 (B1), Olak_35 (B1), Oline_34 (B1), Olive_35 (B1), OliverWalter_35 (B1), Omniscient_35 (B1), Oosterbaan_35 (B1), Opia_35 (B2), Orion_35 (B1), Orwigg_35 (B1), PG1_35 (B1), Pacifista_36 (B1), Phamished_35 (B1), Phantasmagoria_35 (B2), Phareon_35 (B1), PhatCats2014_35 (B1), PhatLouie_35 (B1), PhenghisKhan_34 (B1), Pherdinand_35 (B1), Phergie_34 (B1), Phipps_35 (B1), Phleuron_34 (B1), PhrankReynolds_34 (B1), PhrodoBaggins_34 (B1), Phunky_35 (B1), Piglet_0034 (B1), PinheadLarry_35 (B1), Pinkman_34 (B1), Pipsqueak_35 (B1), Placalicious_34 (B1), Plmatters_35 (B1), Podrick_35 (B1), Pops_35 (B1), Potter_34 (B1), Prickles_35 (B1), ProfessorX_35 (B1), Puhltonio_35 (B1), QueenBeane_35 (B1), RedMaple_34 (B1), Rhinoforte_35 (B2), Ricotta_35 (B1), Riggan_35 (B1), Robyn_34 (B1), Roliet_35 (B1), Roscoe_36 (B1), Rosebush_35 (B2), Roy17_35 (B1), SDcharge11_35 (B1), Sabella_35 (B2), Samaymay_35 (B1), SassyCat97_34 (B1), Schadenfreude_34 (B1), Schueller_35 (B1), Scoot17C_35 (B1), Scrick_35 (B1), Sejanus_30 (AD), Selr12_35 (B1), Serendipity_35 (B1), Serpentine_0035 (B1), Sheila_35 (B1), ShiVal_35 (B1), Sigman_35 (B1), Simielle_34 (B1), Skippy_35 (B1), Slatt_35 (B1), Soile_35 (B1), Solosis_34 (B1), Sophia_34 (B1), Soto_35 (B1), Spartan300_35 (B1), Squid_35 (B1), Squiggle_35 (B1), Struggle_34 (B1), Suffolk_35 (B1), Surely_35 (B1), Swiphy_36 (B1), Swish_35 (B1), TA17A_35 (B2), TallGrassMM_35 (B1), Telesworld_34 (B1), Thora_35 (B1), ThreeOh3D2_35 (B1), Timmi_34 (B1), Tinciduntolum_36 (B2), TomBombadil_35 (B1), Tomlarah_35 (B1), Toni_34 (B1), Tooj_35 (B1), Tres_35 (B2), True_34 (B1), Trypo_35 (B1), TyrionL_34 (B1), UAch1_35 (B1), UncleHowie_35 (B1),

Usavi_35 (B1), Vaishali24_34 (B1), Valjean_35 (B1), Vaticameos_35 (B1), Veritas_34 (B1), Virapocalypse_35 (B1), Virgeve_34 (B1), Vista_35 (B1), Vivaldi_35 (B1), Vortex_35 (B1), Wallhey_34 (B1), Waterdiva_35 (B1), Weher20_35 (B1), West99_35 (B2), Windsor_34 (B1), Xavier_34 (B1), Yoshand_35 (B1), YouGoGlencoco_35 (B1), Zaider_36 (B1), Zelda_35 (B1), Zonia_35 (B1),

Start 50:

- Found in 77 of 429 (17.9%) of genes in pham
- Manual Annotations of this start: 66 of 380
- Called 98.7% of time when present
- Phage (with cluster) where this start called: Abinghost_35 (B3), Acadian_34 (B5), Akoma_35 (B3), Ares_35 (B2), Argie_28 (W), Athena_36 (B3), Audrey_35 (B3), Bae_33 (B5), Baloo_35 (B3), Ben11_34 (B3), BirdsNest_36 (B13), Briakila_36 (B3), Casbah_34 (B3), Cepens_27 (W), ChaChing_35 (B3), Chandler_35 (B3), Compostia_36 (B3), Corofin_35 (B3), D12_27 (W), Daisy_35 (B3), Deenasa_35 (B3), Devonte_35 (B3), DigitDog_34 (B5), Donny_34 (B5), EastView9101_34 (B5), FlagStaff_25 (G2), Gadget_36 (B3), Gervas_35 (B3), GlenHope_36 (B3), Godines_35 (B2), Halfpint_34 (B3), HarveySr_35 (B3), Heathcliff_35 (B3), Jackstina_32 (B3), Kamiyu_35 (B3), Kronus_34 (B3), Laurie_35 (B2), LestyG_35 (B3), MOOREtheMARYer_26 (G3), Marley1013_35 (B3), Megabear_27 (W), MmasiCarm_35 (B3), Mortcellus_34 (B3), Morty007_35 (B3), Mysterious_35 (B5), Nangang_34 (B5), Neos5_35 (B3), Nozo_35 (B3), Obutu_35 (B3), OrangeOswald_35 (B3), PR_27 (W), Pace1224_25 (G2), Phaedrus_33 (B3), Phayeta_36 (B3), Phelemich_34 (B5), Philly_34 (B3), Phlyer_35 (B3), Pinnie_26 (G3), Pipefish_37 (B3), Qyrzula_33 (B2), RagingRooster_35 (B3), Reprobate_34 (B5), Rich_33 (B5), Rita1961_35 (B3), RomaT_35 (B3), Serendipitous_33 (B5), SirJeffery_34 (B5), SlippinJimmy_35 (B3), StinkyVeggy_36 (B5), Suigeneris_34 (B5), SynergyX_35 (B3), Taptic_27 (W), Thonko_33 (B8), Tydolla_35 (B3), Yahalom_35 (B3), Yinz_35 (B3),

Start 51:

- Found in 5 of 429 (1.2%) of genes in pham
- Manual Annotations of this start: 5 of 380
- Called 100.0% of time when present
- Phage (with cluster) where this start called: CRB2_37 (B9), Indlovu_32 (B11), PenguinLover67_36 (B9), Quesadilla_36 (B9), Zenteno07_38 (B13),

Start 52:

- Found in 6 of 429 (1.4%) of genes in pham
- Manual Annotations of this start: 2 of 380
- Called 100.0% of time when present
- Phage (with cluster) where this start called: 39HC_029 (B6), 40BC_029 (B6), Hosp_027 (B6), Jolie1_029 (B6), KayaCho_29 (B6), LilMcDreamy_30 (B12),

Start 53:

- Found in 28 of 429 (6.5%) of genes in pham
- Manual Annotations of this start: 22 of 380
- Called 100.0% of time when present
- Phage (with cluster) where this start called: AlanGrant_33 (B4), Apex_32 (B4), Austelle_33 (B4), BobbyK_32 (B4), BrownCNA_33 (B4), ChrisnMich_31 (B4), Cooper_32 (B4), Fortunato_32 (B4), Frederick_32 (B4), Hangman_32 (B4), Heath_31 (B4), Hydro_32 (B4), JAMaL_32 (B4), JaguarMi_32 (B4), Lolalove_32 (B4), Magpie_31 (B4), Mithril_32 (B4), Mudslide_32 (B4), Nanao_31 (B4), Nigel_30 (B4), Poster_31 (B4), Prince_33 (B4), RawrgerThat_32 (B4), Stinger_30 (B4),

Vincenzo_33 (B4), VioletZ_32 (B4), Waleliano_32 (B4), Zemanar_33 (B4),

Start 64:

- Found in 296 of 429 (69.0%) of genes in pham
- No Manual Annotations of this start.
- Called 1.0% of time when present
- Phage (with cluster) where this start called: Kaleb_35 (B2), MrPhizzler_34 (B1), Rimu_36 (B1),

Start 66:

- Found in 278 of 429 (64.8%) of genes in pham
- No Manual Annotations of this start.
- Called 1.4% of time when present
- Phage (with cluster) where this start called: Eugenia_35 (B1), Gwilliam_35 (B1), Orfeu_34 (B1), Quisquilliae_35 (B1),

Summary by clusters:

There are 17 clusters represented in this pham: G3, W, B8, G2, B11, B4, B5, B6, B7, B12, B13, B2, B3, AD, B10, B9, B1,

Info for manual annotations of cluster AD:

- Start number 49 was manually annotated 3 times for cluster AD.

Info for manual annotations of cluster B1:

- Start number 49 was manually annotated 247 times for cluster B1.

Info for manual annotations of cluster B10:

- Start number 46 was manually annotated 1 time for cluster B10.

Info for manual annotations of cluster B11:

- Start number 51 was manually annotated 1 time for cluster B11.

Info for manual annotations of cluster B12:

- Start number 52 was manually annotated 1 time for cluster B12.

Info for manual annotations of cluster B13:

- Start number 50 was manually annotated 1 time for cluster B13.
- Start number 51 was manually annotated 1 time for cluster B13.

Info for manual annotations of cluster B2:

- Start number 49 was manually annotated 28 times for cluster B2.
- Start number 50 was manually annotated 4 times for cluster B2.

Info for manual annotations of cluster B3:

- Start number 43 was manually annotated 1 time for cluster B3.
- Start number 50 was manually annotated 43 times for cluster B3.

Info for manual annotations of cluster B4:

- Start number 53 was manually annotated 22 times for cluster B4.

Info for manual annotations of cluster B5:

- Start number 50 was manually annotated 8 times for cluster B5.

Info for manual annotations of cluster B6:

- Start number 52 was manually annotated 1 time for cluster B6.

Info for manual annotations of cluster B7:

- Start number 48 was manually annotated 1 time for cluster B7.

Info for manual annotations of cluster B8:

- Start number 50 was manually annotated 1 time for cluster B8.

Info for manual annotations of cluster B9:

- Start number 46 was manually annotated 1 time for cluster B9.
- Start number 49 was manually annotated 1 time for cluster B9.
- Start number 51 was manually annotated 3 times for cluster B9.

Info for manual annotations of cluster G2:

- Start number 50 was manually annotated 1 time for cluster G2.

Info for manual annotations of cluster G3:

- Start number 50 was manually annotated 2 times for cluster G3.

Info for manual annotations of cluster W:

- Start number 49 was manually annotated 2 times for cluster W.
- Start number 50 was manually annotated 6 times for cluster W.

Gene Information:

Gene: 39HC_029 Start: 31698, Stop: 32078, Start Num: 52

Candidate Starts for 39HC_029:

(Start: 52 @31698 has 2 MA's), (56, 31728), (57, 31740), (66, 31764), (75, 31809), (77, 31824), (87, 31878), (90, 31899), (97, 31944), (114, 32031), (117, 32040), (119, 32052), (122, 32067), (123, 32070),

Gene: 40BC_029 Start: 31698, Stop: 32078, Start Num: 52

Candidate Starts for 40BC_029:

(Start: 52 @31698 has 2 MA's), (56, 31728), (57, 31740), (66, 31764), (75, 31809), (77, 31824), (87, 31878), (90, 31899), (97, 31944), (114, 32031), (117, 32040), (119, 32052), (122, 32067), (123, 32070),

Gene: ABU_35 Start: 33953, Stop: 34339, Start Num: 49

Candidate Starts for ABU_35:

(40, 33812), (Start: 43 @33848 has 1 MA's), (Start: 49 @33953 has 281 MA's), (56, 33992), (64, 34028), (66, 34031), (87, 34139), (91, 34166), (105, 34238), (117, 34298),

Gene: Abinghost_35 Start: 33840, Stop: 34265, Start Num: 50

Candidate Starts for Abinghost_35:

(Start: 43 @33735 has 1 MA's), (Start: 50 @33840 has 66 MA's), (67, 33918), (72, 33951), (74, 33960), (87, 34068), (90, 34089), (93, 34125), (95, 34131), (101, 34143), (104, 34167), (111, 34185), (122, 34254),

Gene: AbsoluteMadLad_34 Start: 33962, Stop: 34348, Start Num: 49

Candidate Starts for AbsoluteMadLad_34:

(40, 33821), (Start: 43 @33857 has 1 MA's), (Start: 49 @33962 has 281 MA's), (56, 34001), (64, 34037), (66, 34040), (87, 34148), (91, 34175), (105, 34247), (117, 34307),

Gene: Acadian_34 Start: 34513, Stop: 34947, Start Num: 50

Candidate Starts for Acadian_34:

(39, 34336), (Start: 43 @34408 has 1 MA's), (Start: 50 @34513 has 66 MA's), (56, 34555), (57, 34567), (65, 34594), (78, 34690), (83, 34717), (87, 34747), (90, 34768), (92, 34777),

Gene: Adriana_35 Start: 33951, Stop: 34337, Start Num: 49

Candidate Starts for Adriana_35:

(40, 33810), (Start: 43 @33846 has 1 MA's), (Start: 49 @33951 has 281 MA's), (56, 33990), (64, 34026), (66, 34029), (87, 34137), (91, 34164), (105, 34236), (117, 34296),

Gene: Aelin_34 Start: 33517, Stop: 33903, Start Num: 49

Candidate Starts for Aelin_34:

(40, 33376), (Start: 43 @33412 has 1 MA's), (Start: 49 @33517 has 281 MA's), (56, 33556), (64, 33592), (66, 33595), (87, 33703), (91, 33730), (105, 33802), (117, 33862),

Gene: Akoma_35 Start: 33844, Stop: 34269, Start Num: 50

Candidate Starts for Akoma_35:

(Start: 43 @33739 has 1 MA's), (Start: 50 @33844 has 66 MA's), (67, 33922), (72, 33955), (74, 33964), (87, 34072), (90, 34093), (92, 34102), (93, 34129), (95, 34135), (101, 34147), (104, 34171), (111, 34189), (122, 34258),

Gene: AlanGrant_33 Start: 34896, Stop: 35249, Start Num: 53

Candidate Starts for AlanGrant_33:

(Start: 53 @34896 has 22 MA's), (56, 34917), (61, 34944), (82, 35046), (92, 35082), (93, 35109), (109, 35163), (121, 35229),

Gene: Allegro_35 Start: 34275, Stop: 34664, Start Num: 49

Candidate Starts for Allegro_35:

(40, 34134), (Start: 43 @34170 has 1 MA's), (Start: 49 @34275 has 281 MA's), (56, 34314), (64, 34350), (78, 34425), (87, 34461), (91, 34488), (95, 34524), (105, 34560), (107, 34563), (117, 34620), (124, 34653),

Gene: AltPhacts_35 Start: 33940, Stop: 34326, Start Num: 49

Candidate Starts for AltPhacts_35:

(40, 33799), (Start: 43 @33835 has 1 MA's), (Start: 49 @33940 has 281 MA's), (56, 33979), (64, 34015), (66, 34018), (87, 34126), (91, 34153), (105, 34225), (117, 34285),

Gene: Altwerkus_34 Start: 33641, Stop: 34027, Start Num: 49

Candidate Starts for Altwerkus_34:

(40, 33500), (Start: 43 @33536 has 1 MA's), (Start: 49 @33641 has 281 MA's), (56, 33680), (64, 33716), (66, 33719), (87, 33827), (91, 33854), (105, 33926), (117, 33986),

Gene: Anderson_35 Start: 33946, Stop: 34332, Start Num: 49

Candidate Starts for Anderson_35:

(40, 33805), (Start: 43 @33841 has 1 MA's), (Start: 49 @33946 has 281 MA's), (56, 33985), (64, 34021), (66, 34024), (87, 34132), (91, 34159), (105, 34231), (117, 34291),

Gene: Andre_35 Start: 33945, Stop: 34331, Start Num: 49

Candidate Starts for Andre_35:

(40, 33804), (Start: 43 @33840 has 1 MA's), (Start: 49 @33945 has 281 MA's), (56, 33984), (64, 34020), (66, 34023), (87, 34131), (91, 34158), (105, 34230), (117, 34290),

Gene: Antonia_34 Start: 33517, Stop: 33903, Start Num: 49

Candidate Starts for Antonia_34:

(40, 33376), (Start: 43 @33412 has 1 MA's), (Start: 49 @33517 has 281 MA's), (56, 33556), (64, 33592), (66, 33595), (87, 33703), (91, 33730), (105, 33802), (117, 33862),

Gene: Apex_32 Start: 34354, Stop: 34707, Start Num: 53

Candidate Starts for Apex_32:

(Start: 53 @34354 has 22 MA's), (56, 34375), (61, 34402), (82, 34504), (92, 34540), (109, 34621), (110, 34624), (121, 34687),

Gene: Apizium_34 Start: 33709, Stop: 34095, Start Num: 49

Candidate Starts for Apizium_34:

(40, 33568), (Start: 43 @33604 has 1 MA's), (Start: 49 @33709 has 281 MA's), (56, 33748), (64, 33784), (66, 33787), (87, 33895), (91, 33922), (105, 33994), (117, 34054),

Gene: Arbiter_35 Start: 34364, Stop: 34753, Start Num: 49

Candidate Starts for Arbiter_35:

(40, 34223), (Start: 43 @34259 has 1 MA's), (Start: 49 @34364 has 281 MA's), (56, 34403), (78, 34514), (87, 34550), (91, 34577), (95, 34613), (105, 34649), (107, 34652), (117, 34709), (124, 34742),

Gene: Ares_35 Start: 34315, Stop: 34737, Start Num: 50

Candidate Starts for Ares_35:

(15, 33772), (16, 33775), (22, 33826), (32, 33865), (33, 33907), (39, 34138), (Start: 43 @34210 has 1 MA's), (Start: 50 @34315 has 66 MA's), (56, 34345), (69, 34405), (85, 34525), (87, 34540), (90, 34561), (92, 34570), (95, 34603), (103, 34627), (122, 34726),

Gene: Argie_28 Start: 31290, Stop: 31712, Start Num: 50

Candidate Starts for Argie_28:

(Start: 50 @31290 has 66 MA's), (56, 31320), (69, 31380), (74, 31407), (85, 31500), (87, 31515), (90, 31536), (93, 31572), (94, 31575), (95, 31578), (103, 31602), (112, 31641),

Gene: Ashraf_34 Start: 33513, Stop: 33899, Start Num: 49

Candidate Starts for Ashraf_34:

(40, 33372), (Start: 43 @33408 has 1 MA's), (Start: 49 @33513 has 281 MA's), (56, 33552), (64, 33588), (66, 33591), (87, 33699), (91, 33726), (105, 33798), (117, 33858),

Gene: Athena_36 Start: 34591, Stop: 35016, Start Num: 50

Candidate Starts for Athena_36:

(Start: 43 @34486 has 1 MA's), (Start: 50 @34591 has 66 MA's), (67, 34669), (72, 34702), (74, 34711), (90, 34840), (93, 34876), (95, 34882), (101, 34894), (104, 34918), (111, 34936), (122, 35005),

Gene: Audrey_35 Start: 33840, Stop: 34265, Start Num: 50

Candidate Starts for Audrey_35:

(Start: 43 @33735 has 1 MA's), (Start: 50 @33840 has 66 MA's), (67, 33918), (72, 33951), (74, 33960), (90, 34089), (93, 34125), (95, 34131), (101, 34143), (104, 34167), (111, 34185), (122, 34254),

Gene: Austelle_33 Start: 34810, Stop: 35163, Start Num: 53

Candidate Starts for Austelle_33:

(Start: 53 @34810 has 22 MA's), (56, 34831), (61, 34858), (82, 34960), (92, 34996), (109, 35077), (110, 35080), (121, 35143),

Gene: Badfish_35 Start: 33975, Stop: 34361, Start Num: 49

Candidate Starts for Badfish_35:

(40, 33834), (Start: 43 @33870 has 1 MA's), (Start: 49 @33975 has 281 MA's), (56, 34014), (64, 34050), (66, 34053), (87, 34161), (91, 34188), (105, 34260), (117, 34320),

Gene: Bae_33 Start: 34330, Stop: 34764, Start Num: 50

Candidate Starts for Bae_33:

(39, 34150), (Start: 50 @34330 has 66 MA's), (56, 34372), (65, 34411), (84, 34543), (87, 34564), (90, 34585), (92, 34594), (116, 34723),

Gene: Baloo_35 Start: 33843, Stop: 34268, Start Num: 50

Candidate Starts for Baloo_35:

(Start: 43 @33738 has 1 MA's), (Start: 50 @33843 has 66 MA's), (67, 33921), (72, 33954), (74, 33963), (90, 34092), (93, 34128), (95, 34134), (101, 34146), (104, 34170), (111, 34188), (122, 34257),

Gene: Bananafish_35 Start: 34284, Stop: 34673, Start Num: 49

Candidate Starts for Bananafish_35:

(40, 34143), (Start: 43 @34179 has 1 MA's), (Start: 49 @34284 has 281 MA's), (56, 34323), (87, 34470), (91, 34497), (95, 34533), (105, 34569), (107, 34572), (117, 34629), (124, 34662),

Gene: Banjo_34 Start: 33651, Stop: 34037, Start Num: 49

Candidate Starts for Banjo_34:

(40, 33510), (Start: 43 @33546 has 1 MA's), (Start: 49 @33651 has 281 MA's), (56, 33690), (64, 33726), (66, 33729), (87, 33837), (91, 33864), (105, 33936), (117, 33996),

Gene: Basato_36 Start: 34230, Stop: 34616, Start Num: 49

Candidate Starts for Basato_36:

(40, 34089), (Start: 43 @34125 has 1 MA's), (Start: 49 @34230 has 281 MA's), (56, 34269), (64, 34305), (66, 34308), (87, 34416), (91, 34443), (105, 34515), (117, 34575),

Gene: BatteryCK_34 Start: 33570, Stop: 33956, Start Num: 49

Candidate Starts for BatteryCK_34:

(40, 33429), (Start: 43 @33465 has 1 MA's), (Start: 49 @33570 has 281 MA's), (56, 33609), (64, 33645), (66, 33648), (87, 33756), (91, 33783), (105, 33855), (117, 33915),

Gene: Beaglebox_34 Start: 33672, Stop: 34058, Start Num: 49

Candidate Starts for Beaglebox_34:

(40, 33531), (Start: 43 @33567 has 1 MA's), (Start: 49 @33672 has 281 MA's), (56, 33711), (64, 33747), (66, 33750), (87, 33858), (91, 33885), (105, 33957), (117, 34017),

Gene: Ben11_34 Start: 33662, Stop: 34087, Start Num: 50

Candidate Starts for Ben11_34:

(Start: 43 @33557 has 1 MA's), (Start: 50 @33662 has 66 MA's), (72, 33773), (74, 33782), (87, 33890), (90, 33911), (93, 33947), (95, 33953), (101, 33965), (104, 33989), (111, 34007), (122, 34076),

Gene: Bernardo_35 Start: 33825, Stop: 34355, Start Num: 43

Candidate Starts for Bernardo_35:

(Start: 43 @33825 has 1 MA's), (Start: 50 @33930 has 66 MA's), (67, 34008), (72, 34041), (74, 34050), (87, 34158), (90, 34179), (93, 34215), (95, 34221), (101, 34233), (104, 34257), (111, 34275), (122, 34344),

Gene: BirdsNest_36 Start: 32603, Stop: 32965, Start Num: 50

Candidate Starts for BirdsNest_36:

(Start: 50 @32603 has 66 MA's), (59, 32660), (71, 32705), (89, 32783), (115, 32918), (122, 32951),

Gene: Bishoperium_34 Start: 33660, Stop: 34046, Start Num: 49

Candidate Starts for Bishoperium_34:

(40, 33519), (Start: 43 @33555 has 1 MA's), (Start: 49 @33660 has 281 MA's), (56, 33699), (64, 33735), (66, 33738), (87, 33846), (91, 33873), (105, 33945), (117, 34005),

Gene: BlackStallion_35 Start: 33962, Stop: 34348, Start Num: 49

Candidate Starts for BlackStallion_35:

(40, 33821), (Start: 43 @33857 has 1 MA's), (Start: 49 @33962 has 281 MA's), (56, 34001), (64, 34037), (66, 34040), (87, 34148), (91, 34175), (105, 34247), (117, 34307),

Gene: Blocker23_35 Start: 34402, Stop: 34791, Start Num: 49

Candidate Starts for Blocker23_35:

(40, 34261), (Start: 43 @34297 has 1 MA's), (Start: 49 @34402 has 281 MA's), (56, 34441), (64, 34477), (78, 34552), (87, 34588), (91, 34615), (95, 34651), (105, 34687), (107, 34690), (117, 34747), (124, 34780),

Gene: BlueHusk_35 Start: 33459, Stop: 33845, Start Num: 49

Candidate Starts for BlueHusk_35:

(40, 33318), (Start: 43 @33354 has 1 MA's), (Start: 49 @33459 has 281 MA's), (56, 33498), (64, 33534), (66, 33537), (87, 33645), (91, 33672), (105, 33744), (117, 33804),

Gene: Bluephacebaby_34 Start: 33657, Stop: 34043, Start Num: 49

Candidate Starts for Bluephacebaby_34:

(40, 33516), (Start: 43 @33552 has 1 MA's), (Start: 49 @33657 has 281 MA's), (56, 33696), (64, 33732), (66, 33735), (87, 33843), (91, 33870), (105, 33942), (117, 34002),

Gene: BobbyK_32 Start: 34179, Stop: 34532, Start Num: 53

Candidate Starts for BobbyK_32:

(Start: 53 @34179 has 22 MA's), (56, 34200), (61, 34227), (82, 34329), (92, 34365), (109, 34446), (110, 34449), (121, 34512),

Gene: Boehler_35 Start: 33963, Stop: 34349, Start Num: 49

Candidate Starts for Boehler_35:

(40, 33822), (Start: 43 @33858 has 1 MA's), (Start: 49 @33963 has 281 MA's), (56, 34002), (64, 34038), (66, 34041), (87, 34149), (91, 34176), (105, 34248), (117, 34308),

Gene: Boyle_35 Start: 34403, Stop: 34792, Start Num: 49

Candidate Starts for Boyle_35:

(40, 34262), (Start: 43 @34298 has 1 MA's), (Start: 49 @34403 has 281 MA's), (56, 34442), (64, 34478), (78, 34553), (87, 34589), (91, 34616), (95, 34652), (105, 34688), (107, 34691), (117, 34748), (124, 34781),

Gene: Briakila_36 Start: 34610, Stop: 35035, Start Num: 50

Candidate Starts for Briakila_36:

(Start: 43 @34505 has 1 MA's), (Start: 50 @34610 has 66 MA's), (67, 34688), (72, 34721), (74, 34730), (87, 34838), (90, 34859), (92, 34868), (93, 34895), (95, 34901), (101, 34913), (104, 34937), (111, 34955), (122, 35024),

Gene: Brilliant_35 Start: 33668, Stop: 34054, Start Num: 49

Candidate Starts for Brilliant_35:

(40, 33527), (Start: 43 @33563 has 1 MA's), (Start: 49 @33668 has 281 MA's), (56, 33707), (64, 33743), (66, 33746), (87, 33854), (91, 33881), (105, 33953), (117, 34013),

Gene: BrownCNA_33 Start: 34440, Stop: 34793, Start Num: 53

Candidate Starts for BrownCNA_33:

(Start: 53 @34440 has 22 MA's), (56, 34461), (61, 34488), (82, 34590), (92, 34626), (93, 34653), (109, 34707), (121, 34773),

Gene: Brownie5_35 Start: 34409, Stop: 34798, Start Num: 49

Candidate Starts for Brownie5_35:

(40, 34268), (Start: 43 @34304 has 1 MA's), (Start: 49 @34409 has 281 MA's), (56, 34448), (64, 34484), (78, 34559), (87, 34595), (91, 34622), (95, 34658), (105, 34694), (107, 34697), (117, 34754), (124, 34787),

Gene: Buckeye_35 Start: 33980, Stop: 34366, Start Num: 49

Candidate Starts for Buckeye_35:

(40, 33839), (Start: 43 @33875 has 1 MA's), (Start: 49 @33980 has 281 MA's), (56, 34019), (64, 34055), (66, 34058), (87, 34166), (91, 34193), (105, 34265), (117, 34325),

Gene: Burr_34 Start: 33657, Stop: 34043, Start Num: 49

Candidate Starts for Burr_34:

(40, 33516), (Start: 43 @33552 has 1 MA's), (Start: 49 @33657 has 281 MA's), (56, 33696), (64, 33732), (66, 33735), (87, 33843), (91, 33870), (105, 33942), (117, 34002),

Gene: CRB2_37 Start: 36313, Stop: 36672, Start Num: 51

Candidate Starts for CRB2_37:

(Start: 51 @36313 has 5 MA's), (69, 36385), (113, 36613), (114, 36622), (120, 36646),

Gene: Calamitous_35 Start: 34289, Stop: 34678, Start Num: 49

Candidate Starts for Calamitous_35:

(40, 34148), (Start: 43 @34184 has 1 MA's), (Start: 49 @34289 has 281 MA's), (56, 34328), (64, 34364), (78, 34439), (87, 34475), (91, 34502), (95, 34538), (105, 34574), (107, 34577), (117, 34634), (124, 34667),

Gene: CamL_35 Start: 33958, Stop: 34344, Start Num: 49

Candidate Starts for CamL_35:

(40, 33817), (Start: 43 @33853 has 1 MA's), (Start: 49 @33958 has 281 MA's), (56, 33997), (64, 34033), (66, 34036), (87, 34144), (91, 34171), (105, 34243), (117, 34303),

Gene: CampRoach_34 Start: 33948, Stop: 34334, Start Num: 49

Candidate Starts for CampRoach_34:

(40, 33807), (Start: 43 @33843 has 1 MA's), (Start: 49 @33948 has 281 MA's), (56, 33987), (64, 34023), (66, 34026), (87, 34134), (91, 34161), (105, 34233), (117, 34293),

Gene: Cannibal_35 Start: 33941, Stop: 34327, Start Num: 49

Candidate Starts for Cannibal_35:

(40, 33800), (Start: 43 @33836 has 1 MA's), (Start: 49 @33941 has 281 MA's), (56, 33980), (64, 34016), (66, 34019), (87, 34127), (91, 34154), (105, 34226), (117, 34286),

Gene: Carthage_33 Start: 32870, Stop: 33256, Start Num: 49

Candidate Starts for Carthage_33:

(40, 32729), (Start: 43 @32765 has 1 MA's), (Start: 49 @32870 has 281 MA's), (56, 32909), (64, 32945), (66, 32948), (87, 33056), (91, 33083), (105, 33155), (117, 33215),

Gene: Casbah_34 Start: 33692, Stop: 34117, Start Num: 50

Candidate Starts for Casbah_34:

(Start: 43 @33587 has 1 MA's), (Start: 50 @33692 has 66 MA's), (72, 33803), (74, 33812), (87, 33920), (90, 33941), (93, 33977), (95, 33983), (101, 33995), (104, 34019), (111, 34037), (122, 34106),

Gene: Cepens_27 Start: 31005, Stop: 31427, Start Num: 50

Candidate Starts for Cepens_27:

(Start: 50 @31005 has 66 MA's), (56, 31035), (69, 31095), (74, 31122), (85, 31215), (87, 31230), (93, 31287), (94, 31290), (95, 31293), (103, 31317), (112, 31356),

Gene: ChaChing_35 Start: 33855, Stop: 34280, Start Num: 50

Candidate Starts for ChaChing_35:

(Start: 43 @33750 has 1 MA's), (Start: 50 @33855 has 66 MA's), (67, 33933), (72, 33966), (74, 33975), (90, 34104), (93, 34140), (95, 34146), (101, 34158), (104, 34182), (111, 34200), (122, 34269),

Gene: Chaelin_35 Start: 33655, Stop: 34041, Start Num: 49

Candidate Starts for Chaelin_35:

(40, 33514), (Start: 43 @33550 has 1 MA's), (Start: 49 @33655 has 281 MA's), (56, 33694), (64, 33730), (66, 33733), (87, 33841), (91, 33868), (105, 33940), (117, 34000),

Gene: Chah_36 Start: 33975, Stop: 34361, Start Num: 49

Candidate Starts for Chah_36:

(40, 33834), (Start: 43 @33870 has 1 MA's), (Start: 49 @33975 has 281 MA's), (56, 34014), (64, 34050), (66, 34053), (87, 34161), (91, 34188), (105, 34260), (117, 34320),

Gene: Chandler_35 Start: 34623, Stop: 35048, Start Num: 50

Candidate Starts for Chandler_35:

(Start: 43 @34518 has 1 MA's), (Start: 50 @34623 has 66 MA's), (67, 34701), (72, 34734), (74, 34743), (87, 34851), (90, 34872), (93, 34908), (95, 34914), (101, 34926), (104, 34950), (111, 34968), (122, 35037),

Gene: Charles1_35 Start: 33943, Stop: 34329, Start Num: 49

Candidate Starts for Charles1_35:

(40, 33802), (Start: 43 @33838 has 1 MA's), (Start: 49 @33943 has 281 MA's), (56, 33982), (64, 34018), (66, 34021), (87, 34129), (91, 34156), (105, 34228), (117, 34288),

Gene: CharlieGBrown_34 Start: 33533, Stop: 33919, Start Num: 49

Candidate Starts for CharlieGBrown_34:

(40, 33392), (Start: 43 @33428 has 1 MA's), (Start: 49 @33533 has 281 MA's), (56, 33572), (64, 33608), (66, 33611), (87, 33719), (91, 33746), (105, 33818), (117, 33878),

Gene: CheetO_35 Start: 33957, Stop: 34343, Start Num: 49

Candidate Starts for CheetO_35:

(40, 33816), (Start: 43 @33852 has 1 MA's), (Start: 49 @33957 has 281 MA's), (56, 33996), (64, 34032), (66, 34035), (87, 34143), (91, 34170), (105, 34242), (117, 34302),

Gene: Cher_34 Start: 33680, Stop: 34066, Start Num: 49

Candidate Starts for Cher_34:

(40, 33539), (Start: 43 @33575 has 1 MA's), (Start: 49 @33680 has 281 MA's), (56, 33719), (64, 33755), (66, 33758), (87, 33866), (91, 33893), (105, 33965), (117, 34025),

Gene: Childish_34 Start: 33683, Stop: 34069, Start Num: 49

Candidate Starts for Childish_34:

(40, 33542), (Start: 43 @33578 has 1 MA's), (Start: 49 @33683 has 281 MA's), (56, 33722), (64, 33758), (66, 33761), (87, 33869), (91, 33896), (105, 33968), (117, 34028),

Gene: Chorkpop_35 Start: 33679, Stop: 34065, Start Num: 49

Candidate Starts for Chorkpop_35:

(40, 33538), (Start: 43 @33574 has 1 MA's), (Start: 49 @33679 has 281 MA's), (56, 33718), (64, 33754), (66, 33757), (87, 33865), (91, 33892), (105, 33964), (117, 34024),

Gene: ChrisnMich_31 Start: 33140, Stop: 33493, Start Num: 53

Candidate Starts for ChrisnMich_31:

(Start: 53 @33140 has 22 MA's), (56, 33161), (61, 33188), (82, 33290), (92, 33326), (109, 33407), (110, 33410), (121, 33473),

Gene: Chunky_35 Start: 33966, Stop: 34352, Start Num: 49

Candidate Starts for Chunky_35:

(40, 33825), (Start: 43 @33861 has 1 MA's), (Start: 49 @33966 has 281 MA's), (56, 34005), (64, 34041), (66, 34044), (87, 34152), (91, 34179), (105, 34251), (117, 34311),

Gene: Chute_34 Start: 34004, Stop: 34390, Start Num: 49

Candidate Starts for Chute_34:

(40, 33863), (Start: 43 @33899 has 1 MA's), (Start: 49 @34004 has 281 MA's), (56, 34043), (64, 34079), (66, 34082), (87, 34190), (91, 34217), (105, 34289), (117, 34349),

Gene: Cobra_35 Start: 33964, Stop: 34350, Start Num: 49

Candidate Starts for Cobra_35:

(40, 33823), (Start: 43 @33859 has 1 MA's), (Start: 49 @33964 has 281 MA's), (56, 34003), (64, 34039), (66, 34042), (87, 34150), (91, 34177), (105, 34249), (117, 34309),

Gene: Coffee_35 Start: 34392, Stop: 34781, Start Num: 49

Candidate Starts for Coffee_35:

(40, 34251), (Start: 43 @34287 has 1 MA's), (Start: 49 @34392 has 281 MA's), (56, 34431), (64, 34467), (78, 34542), (87, 34578), (91, 34605), (95, 34641), (105, 34677), (107, 34680), (117, 34737), (124, 34770),

Gene: Colbert_35 Start: 34019, Stop: 34405, Start Num: 49

Candidate Starts for Colbert_35:

(40, 33878), (Start: 43 @33914 has 1 MA's), (Start: 49 @34019 has 281 MA's), (56, 34058), (64, 34094), (66, 34097), (87, 34205), (91, 34232), (105, 34304), (117, 34364),

Gene: Coletti_34 Start: 34004, Stop: 34390, Start Num: 49

Candidate Starts for Coletti_34:

(40, 33863), (Start: 43 @33899 has 1 MA's), (Start: 49 @34004 has 281 MA's), (56, 34043), (64, 34079), (66, 34082), (87, 34190), (91, 34217), (105, 34289), (117, 34349),

Gene: Compostia_36 Start: 34271, Stop: 34696, Start Num: 50

Candidate Starts for Compostia_36:

(35, 33929), (37, 34040), (Start: 43 @34166 has 1 MA's), (Start: 50 @34271 has 66 MA's), (72, 34382), (74, 34391), (90, 34520), (92, 34529), (93, 34556), (95, 34562), (101, 34574), (104, 34598), (111, 34616), (122, 34685),

Gene: Cooper_32 Start: 33361, Stop: 33711, Start Num: 53

Candidate Starts for Cooper_32:

(Start: 53 @33361 has 22 MA's), (56, 33382), (61, 33409), (92, 33544), (109, 33625), (121, 33691),

Gene: Cornobble_34 Start: 33518, Stop: 33904, Start Num: 49

Candidate Starts for Cornobble_34:

(40, 33377), (Start: 43 @33413 has 1 MA's), (Start: 49 @33518 has 281 MA's), (56, 33557), (64, 33593), (66, 33596), (87, 33704), (91, 33731), (105, 33803), (117, 33863),

Gene: Corofin_35 Start: 33866, Stop: 34291, Start Num: 50

Candidate Starts for Corofin_35:

(Start: 43 @33761 has 1 MA's), (Start: 50 @33866 has 66 MA's), (67, 33944), (72, 33977), (74, 33986), (90, 34115), (93, 34151), (95, 34157), (101, 34169), (104, 34193), (111, 34211), (122, 34280),

Gene: Cosmolli16_34 Start: 33668, Stop: 34054, Start Num: 49

Candidate Starts for Cosmolli16_34:

(40, 33527), (Start: 43 @33563 has 1 MA's), (Start: 49 @33668 has 281 MA's), (56, 33707), (64, 33743), (66, 33746), (87, 33854), (91, 33881), (105, 33953), (117, 34013),

Gene: Craff_35 Start: 33961, Stop: 34347, Start Num: 49

Candidate Starts for Craff_35:

(40, 33820), (Start: 43 @33856 has 1 MA's), (Start: 49 @33961 has 281 MA's), (56, 34000), (64, 34036), (66, 34039), (87, 34147), (91, 34174), (105, 34246), (117, 34306),

Gene: Crownjwl_35 Start: 33734, Stop: 34120, Start Num: 49

Candidate Starts for Crownjwl_35:

(40, 33593), (Start: 43 @33629 has 1 MA's), (Start: 49 @33734 has 281 MA's), (56, 33773), (64, 33809), (66, 33812), (87, 33920), (91, 33947), (105, 34019), (117, 34079),

Gene: D12_27 Start: 31575, Stop: 31997, Start Num: 50

Candidate Starts for D12_27:

(Start: 50 @31575 has 66 MA's), (56, 31605), (69, 31665), (74, 31692), (85, 31785), (87, 31800), (90, 31821), (93, 31857), (94, 31860), (95, 31863), (103, 31887), (106, 31902), (112, 31926),

Gene: DaddyDaniels_35 Start: 33652, Stop: 34038, Start Num: 49

Candidate Starts for DaddyDaniels_35:

(40, 33511), (Start: 43 @33547 has 1 MA's), (Start: 49 @33652 has 281 MA's), (56, 33691), (64, 33727), (66, 33730), (87, 33838), (91, 33865), (105, 33937), (117, 33997),

Gene: Daffy_35 Start: 33683, Stop: 34069, Start Num: 49

Candidate Starts for Daffy_35:

(40, 33542), (Start: 43 @33578 has 1 MA's), (Start: 49 @33683 has 281 MA's), (56, 33722), (64, 33758), (66, 33761), (87, 33869), (91, 33896), (105, 33968), (117, 34028),

Gene: Daisy_35 Start: 33867, Stop: 34292, Start Num: 50

Candidate Starts for Daisy_35:

(Start: 43 @33762 has 1 MA's), (Start: 50 @33867 has 66 MA's), (67, 33945), (72, 33978), (74, 33987), (87, 34095), (90, 34116), (92, 34125), (93, 34152), (95, 34158), (101, 34170), (104, 34194), (111, 34212), (122, 34281),

Gene: Daka_35 Start: 33957, Stop: 34343, Start Num: 49

Candidate Starts for Daka_35:

(40, 33816), (Start: 43 @33852 has 1 MA's), (Start: 49 @33957 has 281 MA's), (56, 33996), (64, 34032), (66, 34035), (87, 34143), (91, 34170), (105, 34242), (117, 34302),

Gene: Dati_35 Start: 33677, Stop: 34063, Start Num: 49

Candidate Starts for Dati_35:

(40, 33536), (Start: 43 @33572 has 1 MA's), (Start: 49 @33677 has 281 MA's), (56, 33716), (64, 33752), (66, 33755), (87, 33863), (91, 33890), (105, 33962), (117, 34022),

Gene: Deenasa_35 Start: 34606, Stop: 35031, Start Num: 50

Candidate Starts for Deenasa_35:

(Start: 43 @34501 has 1 MA's), (Start: 50 @34606 has 66 MA's), (67, 34684), (72, 34717), (74, 34726), (90, 34855), (93, 34891), (95, 34897), (101, 34909), (104, 34933), (111, 34951), (122, 35020),

Gene: DelRivs_34 Start: 33678, Stop: 34064, Start Num: 49

Candidate Starts for DelRivs_34:

(40, 33537), (Start: 43 @33573 has 1 MA's), (Start: 49 @33678 has 281 MA's), (56, 33717), (64, 33753), (66, 33756), (87, 33864), (91, 33891), (105, 33963), (117, 34023),

Gene: Derpp_34 Start: 33522, Stop: 33908, Start Num: 49

Candidate Starts for Derpp_34:

(40, 33381), (Start: 43 @33417 has 1 MA's), (Start: 49 @33522 has 281 MA's), (56, 33561), (64, 33597), (66, 33600), (87, 33708), (91, 33735), (105, 33807), (117, 33867),

Gene: Devonte_35 Start: 33831, Stop: 34256, Start Num: 50

Candidate Starts for Devonte_35:

(Start: 43 @33726 has 1 MA's), (Start: 50 @33831 has 66 MA's), (67, 33909), (72, 33942), (74, 33951), (87, 34059), (90, 34080), (93, 34116), (95, 34122), (101, 34134), (104, 34158), (111, 34176), (122, 34245),

Gene: Dice_36 Start: 33657, Stop: 34043, Start Num: 49

Candidate Starts for Dice_36:

(40, 33516), (Start: 43 @33552 has 1 MA's), (Start: 49 @33657 has 281 MA's), (56, 33696), (64, 33732), (66, 33735), (87, 33843), (91, 33870), (105, 33942), (117, 34002),

Gene: DigitDog_34 Start: 34112, Stop: 34546, Start Num: 50

Candidate Starts for DigitDog_34:

(39, 33929), (Start: 43 @34007 has 1 MA's), (Start: 50 @34112 has 66 MA's), (83, 34316), (87, 34346),

Gene: Dingo_35 Start: 33940, Stop: 34326, Start Num: 49

Candidate Starts for Dingo_35:

(40, 33799), (Start: 43 @33835 has 1 MA's), (Start: 49 @33940 has 281 MA's), (56, 33979), (64, 34015), (66, 34018), (87, 34126), (91, 34153), (105, 34225), (117, 34285),

Gene: Dione_34 Start: 33662, Stop: 34048, Start Num: 49

Candidate Starts for Dione_34:

(40, 33521), (Start: 43 @33557 has 1 MA's), (Start: 49 @33662 has 281 MA's), (56, 33701), (64, 33737), (66, 33740), (87, 33848), (91, 33875), (105, 33947), (117, 34007),

Gene: DirtJuice_35 Start: 33946, Stop: 34332, Start Num: 49

Candidate Starts for DirtJuice_35:

(40, 33805), (Start: 43 @33841 has 1 MA's), (Start: 49 @33946 has 281 MA's), (56, 33985), (64, 34021), (66, 34024), (87, 34132), (91, 34159), (105, 34231), (117, 34291),

Gene: Doddsville_35 Start: 33676, Stop: 34062, Start Num: 49

Candidate Starts for Doddsville_35:

(40, 33535), (Start: 43 @33571 has 1 MA's), (Start: 49 @33676 has 281 MA's), (56, 33715), (64, 33751), (66, 33754), (87, 33862), (91, 33889), (105, 33961), (117, 34021),

Gene: DoesntMatter_35 Start: 33949, Stop: 34335, Start Num: 49

Candidate Starts for DoesntMatter_35:

(40, 33808), (Start: 43 @33844 has 1 MA's), (Start: 49 @33949 has 281 MA's), (56, 33988), (64, 34024), (66, 34027), (87, 34135), (91, 34162), (105, 34234), (117, 34294),

Gene: DonSanchon_34 Start: 33656, Stop: 34042, Start Num: 49

Candidate Starts for DonSanchon_34:

(40, 33515), (Start: 43 @33551 has 1 MA's), (Start: 49 @33656 has 281 MA's), (56, 33695), (64, 33731), (66, 33734), (87, 33842), (91, 33869), (105, 33941), (117, 34001),

Gene: Donny_34 Start: 34518, Stop: 34952, Start Num: 50

Candidate Starts for Donny_34:

(39, 34341), (Start: 43 @34413 has 1 MA's), (Start: 50 @34518 has 66 MA's), (56, 34560), (57, 34572), (65, 34599), (78, 34695), (83, 34722), (87, 34752), (90, 34773), (92, 34782),

Gene: Dori_31 Start: 30423, Stop: 30851, Start Num: 49

Candidate Starts for Dori_31:

(Start: 43 @30318 has 1 MA's), (Start: 49 @30423 has 281 MA's), (95, 30714), (105, 30750),

Gene: DuchessDung_33 Start: 32813, Stop: 33199, Start Num: 49

Candidate Starts for DuchessDung_33:

(40, 32672), (Start: 43 @32708 has 1 MA's), (Start: 49 @32813 has 281 MA's), (56, 32852), (64, 32888), (66, 32891), (87, 32999), (91, 33026), (105, 33098), (117, 33158),

Gene: Duggie_34 Start: 33678, Stop: 34064, Start Num: 49

Candidate Starts for Duggie_34:

(40, 33537), (Start: 43 @33573 has 1 MA's), (Start: 49 @33678 has 281 MA's), (56, 33717), (64, 33753), (66, 33756), (87, 33864), (91, 33891), (105, 33963), (117, 34023),

Gene: Durga_35 Start: 33976, Stop: 34362, Start Num: 49

Candidate Starts for Durga_35:

(40, 33835), (Start: 43 @33871 has 1 MA's), (Start: 49 @33976 has 281 MA's), (56, 34015), (64, 34051), (66, 34054), (87, 34162), (91, 34189), (105, 34261), (117, 34321),

Gene: Eaglehorse_35 Start: 34316, Stop: 34705, Start Num: 49

Candidate Starts for Eaglehorse_35:

(40, 34175), (Start: 43 @34211 has 1 MA's), (Start: 49 @34316 has 281 MA's), (56, 34355), (64, 34391), (78, 34466), (87, 34502), (91, 34529), (95, 34565), (105, 34601), (107, 34604), (117, 34661), (124, 34694),

Gene: EastView9101_34 Start: 34168, Stop: 34602, Start Num: 50

Candidate Starts for EastView9101_34:

(39, 33991), (Start: 43 @34063 has 1 MA's), (Start: 50 @34168 has 66 MA's), (56, 34210), (57, 34222), (65, 34249), (78, 34345), (83, 34372), (87, 34402), (90, 34423), (92, 34432),

Gene: Emiris_35 Start: 33947, Stop: 34333, Start Num: 49

Candidate Starts for Emiris_35:

(40, 33806), (Start: 43 @33842 has 1 MA's), (Start: 49 @33947 has 281 MA's), (56, 33986), (64, 34022), (66, 34025), (87, 34133), (91, 34160), (105, 34232), (117, 34292),

Gene: EmpTee_35 Start: 33956, Stop: 34342, Start Num: 49

Candidate Starts for EmpTee_35:

(40, 33815), (Start: 43 @33851 has 1 MA's), (Start: 49 @33956 has 281 MA's), (56, 33995), (64, 34031), (66, 34034), (87, 34142), (91, 34169), (105, 34241), (117, 34301),

Gene: Eremos_35 Start: 33955, Stop: 34341, Start Num: 49

Candidate Starts for Eremos_35:

(40, 33814), (Start: 43 @33850 has 1 MA's), (Start: 49 @33955 has 281 MA's), (56, 33994), (64, 34030), (66, 34033), (87, 34141), (91, 34168), (105, 34240), (117, 34300),

Gene: Etaye_35 Start: 33946, Stop: 34332, Start Num: 49

Candidate Starts for Etaye_35:

(40, 33805), (Start: 43 @33841 has 1 MA's), (Start: 49 @33946 has 281 MA's), (56, 33985), (64, 34021), (66, 34024), (87, 34132), (91, 34159), (105, 34231), (117, 34291),

Gene: Eugenia_35 Start: 34043, Stop: 34351, Start Num: 66

Candidate Starts for Eugenia_35:

(40, 33824), (Start: 43 @33860 has 1 MA's), (Start: 49 @33965 has 281 MA's), (56, 34004), (64, 34040), (66, 34043), (87, 34151), (91, 34178), (105, 34250), (117, 34310),

Gene: Fang_35 Start: 33969, Stop: 34355, Start Num: 49

Candidate Starts for Fang_35:

(40, 33828), (Start: 43 @33864 has 1 MA's), (Start: 49 @33969 has 281 MA's), (56, 34008), (64, 34044), (66, 34047), (87, 34155), (91, 34182), (105, 34254), (117, 34314),

Gene: Faze9_35 Start: 34412, Stop: 34801, Start Num: 49

Candidate Starts for Faze9_35:

(40, 34271), (Start: 43 @34307 has 1 MA's), (Start: 49 @34412 has 281 MA's), (56, 34451), (87, 34598), (91, 34625), (95, 34661), (105, 34697), (107, 34700), (117, 34757), (124, 34790),

Gene: FlagStaff_25 Start: 24893, Stop: 25249, Start Num: 50

Candidate Starts for FlagStaff_25:

(Start: 50 @24893 has 66 MA's), (54, 24911), (56, 24929), (57, 24941), (58, 24947), (59, 24950), (71, 24995), (89, 25073), (99, 25121), (102, 25124), (108, 25157),

Gene: FluffyNinja_35 Start: 33962, Stop: 34348, Start Num: 49

Candidate Starts for FluffyNinja_35:

(40, 33821), (Start: 43 @33857 has 1 MA's), (Start: 49 @33962 has 281 MA's), (56, 34001), (64, 34037), (66, 34040), (87, 34148), (91, 34175), (105, 34247), (117, 34307),

Gene: Fortunato_32 Start: 34173, Stop: 34526, Start Num: 53

Candidate Starts for Fortunato_32:

(Start: 53 @34173 has 22 MA's), (56, 34194), (61, 34221), (82, 34323), (92, 34359), (109, 34440), (110, 34443), (121, 34506),

Gene: Fozzie_34 Start: 33978, Stop: 34364, Start Num: 49

Candidate Starts for Fozzie_34:

(40, 33837), (Start: 43 @33873 has 1 MA's), (Start: 49 @33978 has 281 MA's), (56, 34017), (64, 34053), (66, 34056), (87, 34164), (91, 34191), (105, 34263), (117, 34323),

Gene: Frankicide_35 Start: 33974, Stop: 34360, Start Num: 49

Candidate Starts for Frankicide_35:

(40, 33833), (Start: 43 @33869 has 1 MA's), (Start: 49 @33974 has 281 MA's), (56, 34013), (64, 34049), (66, 34052), (87, 34160), (91, 34187), (105, 34259), (117, 34319),

Gene: Frederick_32 Start: 34179, Stop: 34532, Start Num: 53

Candidate Starts for Frederick_32:

(Start: 53 @34179 has 22 MA's), (56, 34200), (61, 34227), (82, 34329), (92, 34365), (109, 34446), (110, 34449), (121, 34512),

Gene: FrenchFry_35 Start: 34406, Stop: 34795, Start Num: 49

Candidate Starts for FrenchFry_35:

(40, 34265), (Start: 43 @34301 has 1 MA's), (Start: 49 @34406 has 281 MA's), (56, 34445), (64, 34481), (78, 34556), (87, 34592), (91, 34619), (95, 34655), (105, 34691), (107, 34694), (117, 34751), (124, 34784),

Gene: Freya_34 Start: 33653, Stop: 34039, Start Num: 49

Candidate Starts for Freya_34:

(40, 33512), (Start: 43 @33548 has 1 MA's), (Start: 49 @33653 has 281 MA's), (56, 33692), (64, 33728), (66, 33731), (87, 33839), (91, 33866), (105, 33938), (117, 33998),

Gene: FriarPreacher_35 Start: 33980, Stop: 34366, Start Num: 49

Candidate Starts for FriarPreacher_35:

(40, 33839), (Start: 43 @33875 has 1 MA's), (Start: 49 @33980 has 281 MA's), (56, 34019), (64, 34055), (66, 34058), (87, 34166), (91, 34193), (105, 34265), (117, 34325),

Gene: Fringe_35 Start: 33945, Stop: 34331, Start Num: 49

Candidate Starts for Fringe_35:

(40, 33804), (Start: 43 @33840 has 1 MA's), (Start: 49 @33945 has 281 MA's), (56, 33984), (64, 34020), (66, 34023), (87, 34131), (91, 34158), (105, 34230), (117, 34290),

Gene: FugateOSU_34 Start: 33658, Stop: 34044, Start Num: 49

Candidate Starts for FugateOSU_34:

(40, 33517), (Start: 43 @33553 has 1 MA's), (Start: 49 @33658 has 281 MA's), (56, 33697), (64, 33733), (66, 33736), (87, 33844), (91, 33871), (105, 33943), (117, 34003),

Gene: Funsized_37 Start: 36735, Stop: 37109, Start Num: 49

Candidate Starts for Funsized_37:

(1, 35826), (2, 35841), (3, 35844), (4, 35868), (5, 35871), (6, 35910), (7, 35973), (8, 35976), (10, 36006), (12, 36105), (19, 36225), (20, 36234), (21, 36237), (23, 36252), (26, 36267), (30, 36276), (34, 36369), (38, 36510), (40, 36600), (Start: 43 @36630 has 1 MA's), (Start: 49 @36735 has 281 MA's), (60, 36801), (88, 36927), (93, 36963), (105, 37005), (109, 37017), (116, 37062), (117, 37065), (121, 37083), (123, 37095),

Gene: Gadget_36 Start: 33854, Stop: 34279, Start Num: 50

Candidate Starts for Gadget_36:

(Start: 43 @33749 has 1 MA's), (Start: 50 @33854 has 66 MA's), (67, 33932), (72, 33965), (74, 33974), (87, 34082), (90, 34103), (92, 34112), (93, 34139), (95, 34145), (101, 34157), (104, 34181), (111, 34199), (122, 34268),

Gene: Gareth_34 Start: 33661, Stop: 34047, Start Num: 49

Candidate Starts for Gareth_34:

(40, 33520), (Start: 43 @33556 has 1 MA's), (Start: 49 @33661 has 281 MA's), (56, 33700), (64, 33736), (66, 33739), (87, 33847), (91, 33874), (105, 33946), (117, 34006),

Gene: GeneCoco_35 Start: 33970, Stop: 34356, Start Num: 49

Candidate Starts for GeneCoco_35:

(40, 33829), (Start: 43 @33865 has 1 MA's), (Start: 49 @33970 has 281 MA's), (56, 34009), (64, 34045), (66, 34048), (87, 34156), (91, 34183), (105, 34255), (117, 34315),

Gene: Gervas_35 Start: 33821, Stop: 34246, Start Num: 50

Candidate Starts for Gervas_35:

(Start: 43 @33716 has 1 MA's), (Start: 50 @33821 has 66 MA's), (72, 33932), (74, 33941), (87, 34049), (90, 34070), (93, 34106), (95, 34112), (101, 34124), (104, 34148), (111, 34166), (122, 34235),

Gene: Giraffe_35 Start: 33664, Stop: 34050, Start Num: 49

Candidate Starts for Giraffe_35:

(40, 33523), (Start: 43 @33559 has 1 MA's), (Start: 49 @33664 has 281 MA's), (56, 33703), (64, 33739), (66, 33742), (87, 33850), (91, 33877), (105, 33949), (117, 34009),

Gene: Glass_35 Start: 34406, Stop: 34795, Start Num: 49

Candidate Starts for Glass_35:

(40, 34265), (Start: 43 @34301 has 1 MA's), (Start: 49 @34406 has 281 MA's), (56, 34445), (64, 34481), (78, 34556), (87, 34592), (91, 34619), (95, 34655), (105, 34691), (107, 34694), (117, 34751), (124, 34784),

Gene: GlenHope_36 Start: 33834, Stop: 34259, Start Num: 50

Candidate Starts for GlenHope_36:

(35, 33492), (37, 33603), (Start: 43 @33729 has 1 MA's), (Start: 50 @33834 has 66 MA's), (72, 33945), (74, 33954), (90, 34083), (92, 34092), (93, 34119), (95, 34125), (101, 34137), (104, 34161), (111, 34179), (122, 34248),

Gene: GodPhather_28 Start: 31802, Stop: 32191, Start Num: 49

Candidate Starts for GodPhather_28:

(40, 31661), (Start: 43 @31697 has 1 MA's), (Start: 49 @31802 has 281 MA's), (56, 31841), (87, 31988), (91, 32015), (95, 32051), (105, 32087), (107, 32090), (117, 32147), (124, 32180),

Gene: Godines_35 Start: 34315, Stop: 34737, Start Num: 50

Candidate Starts for Godines_35:

(16, 33775), (22, 33826), (32, 33865), (33, 33907), (39, 34138), (Start: 43 @34210 has 1 MA's), (Start: 50 @34315 has 66 MA's), (56, 34345), (69, 34405), (85, 34525), (87, 34540), (90, 34561), (92, 34570), (95, 34603), (103, 34627), (122, 34726),

Gene: Gophee_35 Start: 33947, Stop: 34333, Start Num: 49

Candidate Starts for Gophee_35:

(40, 33806), (Start: 43 @33842 has 1 MA's), (Start: 49 @33947 has 281 MA's), (56, 33986), (64, 34022), (66, 34025), (87, 34133), (91, 34160), (105, 34232), (117, 34292),

Gene: Grand2040_34 Start: 33679, Stop: 34065, Start Num: 49

Candidate Starts for Grand2040_34:

(40, 33538), (Start: 43 @33574 has 1 MA's), (Start: 49 @33679 has 281 MA's), (56, 33718), (64, 33754), (66, 33757), (87, 33865), (91, 33892), (105, 33964), (117, 34024),

Gene: Gwilliam_35 Start: 34037, Stop: 34345, Start Num: 66

Candidate Starts for Gwilliam_35:

(40, 33818), (Start: 43 @33854 has 1 MA's), (Start: 49 @33959 has 281 MA's), (56, 33998), (64, 34034), (66, 34037), (87, 34145), (91, 34172), (105, 34244), (117, 34304),

Gene: Gyarad_0035 Start: 33961, Stop: 34347, Start Num: 49

Candidate Starts for Gyarad_0035:

(40, 33820), (Start: 43 @33856 has 1 MA's), (Start: 49 @33961 has 281 MA's), (56, 34000), (64, 34036), (66, 34039), (87, 34147), (91, 34174), (105, 34246), (117, 34306),

Gene: HSavage_35 Start: 33965, Stop: 34351, Start Num: 49

Candidate Starts for HSavage_35:

(40, 33824), (Start: 43 @33860 has 1 MA's), (Start: 49 @33965 has 281 MA's), (56, 34004), (64, 34040), (66, 34043), (87, 34151), (91, 34178), (105, 34250), (117, 34310),

Gene: Haimas_35 Start: 33956, Stop: 34342, Start Num: 49

Candidate Starts for Haimas_35:

(40, 33815), (Start: 43 @33851 has 1 MA's), (Start: 49 @33956 has 281 MA's), (56, 33995), (64, 34031), (66, 34034), (87, 34142), (91, 34169), (105, 34241), (117, 34301),

Gene: Haleema_34 Start: 33679, Stop: 34065, Start Num: 49

Candidate Starts for Haleema_34:

(40, 33538), (Start: 43 @33574 has 1 MA's), (Start: 49 @33679 has 281 MA's), (56, 33718), (64, 33754), (66, 33757), (87, 33865), (91, 33892), (105, 33964), (117, 34024),

Gene: Halfpint_34 Start: 33660, Stop: 34085, Start Num: 50

Candidate Starts for Halfpint_34:

(35, 33318), (37, 33429), (Start: 43 @33555 has 1 MA's), (Start: 50 @33660 has 66 MA's), (72, 33771), (74, 33780), (90, 33909), (93, 33945), (95, 33951), (101, 33963), (104, 33987), (111, 34005), (122, 34074),

Gene: Hamish_35 Start: 33948, Stop: 34334, Start Num: 49

Candidate Starts for Hamish_35:

(40, 33807), (Start: 43 @33843 has 1 MA's), (Start: 49 @33948 has 281 MA's), (56, 33987), (64, 34023), (66, 34026), (87, 34134), (91, 34161), (105, 34233), (117, 34293),

Gene: Hangman_32 Start: 34171, Stop: 34524, Start Num: 53

Candidate Starts for Hangman_32:

(Start: 53 @34171 has 22 MA's), (56, 34192), (61, 34219), (82, 34321), (92, 34357), (109, 34438), (110, 34441), (121, 34504),

Gene: Hartsy_34 Start: 33999, Stop: 34385, Start Num: 49

Candidate Starts for Hartsy_34:

(40, 33858), (Start: 43 @33894 has 1 MA's), (Start: 49 @33999 has 281 MA's), (56, 34038), (64, 34074), (66, 34077), (87, 34185), (91, 34212), (105, 34284), (117, 34344),

Gene: Harvey_35 Start: 33974, Stop: 34360, Start Num: 49

Candidate Starts for Harvey_35:

(40, 33833), (Start: 43 @33869 has 1 MA's), (Start: 49 @33974 has 281 MA's), (56, 34013), (64, 34049), (66, 34052), (87, 34160), (91, 34187), (105, 34259), (117, 34319),

Gene: HarveySr_35 Start: 33827, Stop: 34252, Start Num: 50

Candidate Starts for HarveySr_35:

(Start: 43 @33722 has 1 MA's), (Start: 50 @33827 has 66 MA's), (67, 33905), (72, 33938), (74, 33947), (87, 34055), (90, 34076), (92, 34085), (93, 34112), (95, 34118), (101, 34130), (104, 34154), (111, 34172), (122, 34241),

Gene: Hashim76_38 Start: 33076, Stop: 33447, Start Num: 48

Candidate Starts for Hashim76_38:

(Start: 48 @33076 has 1 MA's), (100, 33316), (109, 33355), (110, 33358),

Gene: Heath_31 Start: 33778, Stop: 34131, Start Num: 53

Candidate Starts for Heath_31:

(Start: 53 @33778 has 22 MA's), (56, 33799), (61, 33826), (92, 33964), (93, 33991), (109, 34045), (110, 34048), (121, 34111),

Gene: Heathcliff_35 Start: 33805, Stop: 34230, Start Num: 50

Candidate Starts for Heathcliff_35:

(Start: 43 @33700 has 1 MA's), (Start: 50 @33805 has 66 MA's), (67, 33883), (72, 33916), (74, 33925), (90, 34054), (93, 34090), (95, 34096), (101, 34108), (104, 34132), (111, 34150), (122, 34219),

Gene: Hedgerow_35 Start: 34388, Stop: 34777, Start Num: 49

Candidate Starts for Hedgerow_35:

(40, 34247), (Start: 43 @34283 has 1 MA's), (Start: 49 @34388 has 281 MA's), (56, 34427), (64, 34463), (78, 34538), (87, 34574), (91, 34601), (95, 34637), (105, 34673), (107, 34676), (117, 34733), (124, 34766),

Gene: Held_35 Start: 33663, Stop: 34049, Start Num: 49

Candidate Starts for Held_35:

(40, 33522), (Start: 43 @33558 has 1 MA's), (Start: 49 @33663 has 281 MA's), (56, 33702), (64, 33738), (66, 33741), (87, 33849), (91, 33876), (105, 33948), (117, 34008),

Gene: HenryJackson_34 Start: 33679, Stop: 34065, Start Num: 49

Candidate Starts for HenryJackson_34:

(40, 33538), (Start: 43 @33574 has 1 MA's), (Start: 49 @33679 has 281 MA's), (56, 33718), (64, 33754), (66, 33757), (87, 33865), (91, 33892), (105, 33964), (117, 34024),

Gene: Hertubise_35 Start: 33970, Stop: 34356, Start Num: 49

Candidate Starts for Hertubise_35:

(40, 33829), (Start: 43 @33865 has 1 MA's), (Start: 49 @33970 has 281 MA's), (56, 34009), (64, 34045), (66, 34048), (87, 34156), (91, 34183), (105, 34255), (117, 34315),

Gene: Hetaeria_35 Start: 33972, Stop: 34358, Start Num: 49

Candidate Starts for Hetaeria_35:

(40, 33831), (Start: 43 @33867 has 1 MA's), (Start: 49 @33972 has 281 MA's), (56, 34011), (64, 34047), (66, 34050), (87, 34158), (91, 34185), (105, 34257), (117, 34317),

Gene: HighStump_34 Start: 33662, Stop: 34048, Start Num: 49

Candidate Starts for HighStump_34:

(40, 33521), (Start: 43 @33557 has 1 MA's), (Start: 49 @33662 has 281 MA's), (56, 33701), (64, 33737), (66, 33740), (87, 33848), (91, 33875), (105, 33947), (117, 34007),

Gene: Hocus_34 Start: 33671, Stop: 34057, Start Num: 49

Candidate Starts for Hocus_34:

(40, 33530), (Start: 43 @33566 has 1 MA's), (Start: 49 @33671 has 281 MA's), (56, 33710), (64, 33746), (66, 33749), (87, 33857), (91, 33884), (105, 33956), (117, 34016),

Gene: Holeinone_35 Start: 34268, Stop: 34657, Start Num: 49

Candidate Starts for Holeinone_35:

(40, 34127), (Start: 43 @34163 has 1 MA's), (Start: 49 @34268 has 281 MA's), (56, 34307), (64, 34343), (78, 34418), (87, 34454), (91, 34481), (95, 34517), (105, 34553), (107, 34556), (117, 34613),

(124, 34646),

Gene: Horchata_35 Start: 33950, Stop: 34336, Start Num: 49

Candidate Starts for Horchata_35:

(40, 33809), (Start: 43 @33845 has 1 MA's), (Start: 49 @33950 has 281 MA's), (56, 33989), (64, 34025), (66, 34028), (87, 34136), (91, 34163), (105, 34235), (117, 34295),

Gene: Hosp_027 Start: 29891, Stop: 30271, Start Num: 52

Candidate Starts for Hosp_027:

(Start: 52 @29891 has 2 MA's), (56, 29921), (57, 29933), (66, 29957), (75, 30002), (77, 30017), (87, 30071), (90, 30092), (97, 30137), (114, 30224), (117, 30233), (119, 30245), (122, 30260), (123, 30263),

Gene: Hydro_32 Start: 34188, Stop: 34541, Start Num: 53

Candidate Starts for Hydro_32:

(Start: 53 @34188 has 22 MA's), (56, 34209), (61, 34236), (82, 34338), (92, 34374), (109, 34455), (110, 34458), (121, 34521),

Gene: ImtiyazSitla_34 Start: 33513, Stop: 33899, Start Num: 49

Candidate Starts for ImtiyazSitla_34:

(40, 33372), (Start: 43 @33408 has 1 MA's), (Start: 49 @33513 has 281 MA's), (56, 33552), (64, 33588), (66, 33591), (87, 33699), (91, 33726), (105, 33798), (117, 33858),

Gene: Imvubu_28 Start: 30831, Stop: 31232, Start Num: 46

Candidate Starts for Imvubu_28:

(Start: 46 @30831 has 2 MA's), (70, 30945), (81, 30999), (87, 31020), (92, 31050), (94, 31080), (100, 31092), (107, 31122), (113, 31161), (118, 31185),

Gene: Inchworm_35 Start: 33948, Stop: 34334, Start Num: 49

Candidate Starts for Inchworm_35:

(40, 33807), (Start: 43 @33843 has 1 MA's), (Start: 49 @33948 has 281 MA's), (56, 33987), (64, 34023), (66, 34026), (87, 34134), (91, 34161), (105, 34233), (117, 34293),

Gene: Indlovu_32 Start: 33079, Stop: 33447, Start Num: 51

Candidate Starts for Indlovu_32:

(45, 33013), (Start: 51 @33079 has 5 MA's), (69, 33151), (107, 33343), (113, 33382), (120, 33415),

Gene: Inverness_35 Start: 33962, Stop: 34348, Start Num: 49

Candidate Starts for Inverness_35:

(40, 33821), (Start: 43 @33857 has 1 MA's), (Start: 49 @33962 has 281 MA's), (56, 34001), (64, 34037), (66, 34040), (87, 34148), (91, 34175), (105, 34247), (117, 34307),

Gene: Iridoclysis_35 Start: 33942, Stop: 34328, Start Num: 49

Candidate Starts for Iridoclysis_35:

(40, 33801), (Start: 43 @33837 has 1 MA's), (Start: 49 @33942 has 281 MA's), (56, 33981), (64, 34017), (66, 34020), (87, 34128), (91, 34155), (105, 34227), (117, 34287),

Gene: IsaacEli_35 Start: 33966, Stop: 34352, Start Num: 49

Candidate Starts for IsaacEli_35:

(40, 33825), (Start: 43 @33861 has 1 MA's), (Start: 49 @33966 has 281 MA's), (56, 34005), (64, 34041), (66, 34044), (87, 34152), (91, 34179), (105, 34251), (117, 34311),

Gene: ItsyBitsy1_35 Start: 34270, Stop: 34659, Start Num: 49

Candidate Starts for ItsyBitsy1_35:

(40, 34129), (Start: 43 @34165 has 1 MA's), (Start: 49 @34270 has 281 MA's), (56, 34309), (64, 34345), (78, 34420), (87, 34456), (91, 34483), (95, 34519), (105, 34555), (107, 34558), (117, 34615), (124, 34648),

Gene: JAMaL_32 Start: 34359, Stop: 34712, Start Num: 53

Candidate Starts for JAMaL_32:

(Start: 53 @34359 has 22 MA's), (56, 34380), (61, 34407), (82, 34509), (92, 34545), (109, 34626), (110, 34629), (121, 34692),

Gene: JDog_35 Start: 33679, Stop: 34065, Start Num: 49

Candidate Starts for JDog_35:

(40, 33538), (Start: 43 @33574 has 1 MA's), (Start: 49 @33679 has 281 MA's), (56, 33718), (64, 33754), (66, 33757), (87, 33865), (91, 33892), (105, 33964), (117, 34024),

Gene: JacAttac_35 Start: 33948, Stop: 34334, Start Num: 49

Candidate Starts for JacAttac_35:

(40, 33807), (Start: 43 @33843 has 1 MA's), (Start: 49 @33948 has 281 MA's), (56, 33987), (64, 34023), (66, 34026), (87, 34134), (91, 34161), (105, 34233), (117, 34293),

Gene: Jackstina_32 Start: 33764, Stop: 34189, Start Num: 50

Candidate Starts for Jackstina_32:

(35, 33422), (37, 33533), (Start: 43 @33659 has 1 MA's), (Start: 50 @33764 has 66 MA's), (72, 33875), (74, 33884), (90, 34013), (92, 34022), (93, 34049), (95, 34055), (101, 34067), (104, 34091), (111, 34109), (122, 34178),

Gene: JaguarMi_32 Start: 33653, Stop: 34006, Start Num: 53

Candidate Starts for JaguarMi_32:

(Start: 53 @33653 has 22 MA's), (56, 33674), (61, 33701), (82, 33803), (92, 33839), (109, 33920), (110, 33923), (121, 33986),

Gene: JakeO_34 Start: 33681, Stop: 34067, Start Num: 49

Candidate Starts for JakeO_34:

(40, 33540), (Start: 43 @33576 has 1 MA's), (Start: 49 @33681 has 281 MA's), (56, 33720), (64, 33756), (66, 33759), (87, 33867), (91, 33894), (105, 33966), (117, 34026),

Gene: JangoPhett_35 Start: 33950, Stop: 34336, Start Num: 49

Candidate Starts for JangoPhett_35:

(40, 33809), (Start: 43 @33845 has 1 MA's), (Start: 49 @33950 has 281 MA's), (56, 33989), (64, 34025), (66, 34028), (87, 34136), (91, 34163), (105, 34235), (117, 34295),

Gene: Jeon_27 Start: 31544, Stop: 31933, Start Num: 49

Candidate Starts for Jeon_27:

(40, 31403), (Start: 43 @31439 has 1 MA's), (Start: 49 @31544 has 281 MA's), (56, 31583), (87, 31730), (91, 31757), (95, 31793), (105, 31829), (107, 31832), (117, 31889), (124, 31922),

Gene: Jillium_34 Start: 33672, Stop: 34058, Start Num: 49

Candidate Starts for Jillium_34:

(40, 33531), (Start: 43 @33567 has 1 MA's), (Start: 49 @33672 has 281 MA's), (56, 33711), (64, 33747), (66, 33750), (87, 33858), (91, 33885), (105, 33957), (117, 34017),

Gene: Jiminy_34 Start: 33516, Stop: 33902, Start Num: 49

Candidate Starts for Jiminy_34:

(40, 33375), (Start: 43 @33411 has 1 MA's), (Start: 49 @33516 has 281 MA's), (56, 33555), (64, 33591), (66, 33594), (87, 33702), (91, 33729), (105, 33801), (117, 33861),

Gene: Jolie1_029 Start: 31678, Stop: 32058, Start Num: 52

Candidate Starts for Jolie1_029:

(Start: 52 @31678 has 2 MA's), (56, 31708), (57, 31720), (66, 31744), (75, 31789), (77, 31804), (87, 31858), (90, 31879), (97, 31924), (114, 32011), (117, 32020), (119, 32032), (122, 32047), (123, 32050),

Gene: KLucky39_35 Start: 33960, Stop: 34346, Start Num: 49

Candidate Starts for KLucky39_35:

(40, 33819), (Start: 43 @33855 has 1 MA's), (Start: 49 @33960 has 281 MA's), (56, 33999), (64, 34035), (66, 34038), (87, 34146), (91, 34173), (105, 34245), (117, 34305),

Gene: Kahve_34 Start: 33676, Stop: 34062, Start Num: 49

Candidate Starts for Kahve_34:

(40, 33535), (Start: 43 @33571 has 1 MA's), (Start: 49 @33676 has 281 MA's), (56, 33715), (64, 33751), (66, 33754), (87, 33862), (91, 33889), (105, 33961), (117, 34021),

Gene: Kailash_35 Start: 34014, Stop: 34400, Start Num: 49

Candidate Starts for Kailash_35:

(40, 33873), (Start: 43 @33909 has 1 MA's), (Start: 49 @34014 has 281 MA's), (56, 34053), (64, 34089), (66, 34092), (87, 34200), (91, 34227), (105, 34299), (117, 34359),

Gene: Kaleb_35 Start: 34478, Stop: 34792, Start Num: 64

Candidate Starts for Kaleb_35:

(40, 34262), (Start: 43 @34298 has 1 MA's), (Start: 49 @34403 has 281 MA's), (56, 34442), (64, 34478), (78, 34553), (87, 34589), (91, 34616), (95, 34652), (105, 34688), (107, 34691), (117, 34748), (124, 34781),

Gene: Kamiyu_35 Start: 33813, Stop: 34238, Start Num: 50

Candidate Starts for Kamiyu_35:

(Start: 43 @33708 has 1 MA's), (Start: 50 @33813 has 66 MA's), (67, 33891), (72, 33924), (74, 33933), (87, 34041), (90, 34062), (92, 34071), (93, 34098), (95, 34104), (101, 34116), (104, 34140), (111, 34158), (122, 34227),

Gene: Katniss_35 Start: 33975, Stop: 34361, Start Num: 49

Candidate Starts for Katniss_35:

(40, 33834), (Start: 43 @33870 has 1 MA's), (Start: 49 @33975 has 281 MA's), (56, 34014), (64, 34050), (66, 34053), (87, 34161), (91, 34188), (105, 34260), (117, 34320),

Gene: KayaCho_29 Start: 31674, Stop: 32054, Start Num: 52

Candidate Starts for KayaCho_29:

(Start: 52 @31674 has 2 MA's), (56, 31704), (57, 31716), (66, 31740), (75, 31785), (77, 31800), (87, 31854), (90, 31875), (97, 31920), (114, 32007), (117, 32016), (119, 32028), (122, 32043), (123, 32046),

Gene: Keitherie_35 Start: 34013, Stop: 34399, Start Num: 49

Candidate Starts for Keitherie_35:

(40, 33872), (Start: 43 @33908 has 1 MA's), (Start: 49 @34013 has 281 MA's), (56, 34052), (64, 34088), (66, 34091), (87, 34199), (91, 34226), (105, 34298), (117, 34358),

Gene: Kheth_35 Start: 34291, Stop: 34680, Start Num: 49

Candidate Starts for Kheth_35:

(40, 34150), (Start: 43 @34186 has 1 MA's), (Start: 49 @34291 has 281 MA's), (56, 34330), (64, 34366), (78, 34441), (87, 34477), (91, 34504), (95, 34540), (105, 34576), (107, 34579), (117, 34636), (124, 34669),

Gene: Kikipoo_35 Start: 33966, Stop: 34352, Start Num: 49

Candidate Starts for Kikipoo_35:

(40, 33825), (Start: 43 @33861 has 1 MA's), (Start: 49 @33966 has 281 MA's), (56, 34005), (64, 34041), (66, 34044), (87, 34152), (91, 34179), (105, 34251), (117, 34311),

Gene: Kimbrough_35 Start: 33668, Stop: 34054, Start Num: 49

Candidate Starts for Kimbrough_35:

(40, 33527), (Start: 43 @33563 has 1 MA's), (Start: 49 @33668 has 281 MA's), (56, 33707), (64, 33743), (66, 33746), (87, 33854), (91, 33881), (105, 33953), (117, 34013),

Gene: KingTut_26 Start: 29337, Stop: 29723, Start Num: 49

Candidate Starts for KingTut_26:

(40, 29196), (Start: 43 @29232 has 1 MA's), (Start: 49 @29337 has 281 MA's), (56, 29376), (64, 29412), (66, 29415), (87, 29523), (91, 29550), (105, 29622), (117, 29682),

Gene: KingVeVeVe_35 Start: 33941, Stop: 34327, Start Num: 49

Candidate Starts for KingVeVeVe_35:

(40, 33800), (Start: 43 @33836 has 1 MA's), (Start: 49 @33941 has 281 MA's), (56, 33980), (64, 34016), (66, 34019), (87, 34127), (91, 34154), (105, 34226), (117, 34286),

Gene: KlimbOn_35 Start: 33954, Stop: 34340, Start Num: 49

Candidate Starts for KlimbOn_35:

(40, 33813), (Start: 43 @33849 has 1 MA's), (Start: 49 @33954 has 281 MA's), (56, 33993), (64, 34029), (66, 34032), (87, 34140), (91, 34167), (105, 34239), (117, 34299),

Gene: Kloppinator_35 Start: 33977, Stop: 34363, Start Num: 49

Candidate Starts for Kloppinator_35:

(40, 33836), (Start: 43 @33872 has 1 MA's), (Start: 49 @33977 has 281 MA's), (56, 34016), (64, 34052), (66, 34055), (87, 34163), (91, 34190), (105, 34262), (117, 34322),

Gene: Knocker_36 Start: 35775, Stop: 36188, Start Num: 46

Candidate Starts for Knocker_36:

(Start: 46 @35775 has 2 MA's), (47, 35781), (57, 35853), (63, 35877), (70, 35901), (81, 35955), (87, 35976), (92, 36006), (100, 36048), (107, 36078), (110, 36090), (113, 36117),

Gene: Kronus_34 Start: 34423, Stop: 34848, Start Num: 50

Candidate Starts for Kronus_34:

(Start: 43 @34318 has 1 MA's), (Start: 50 @34423 has 66 MA's), (72, 34534), (74, 34543), (87, 34651), (90, 34672), (93, 34708), (95, 34714), (101, 34726), (104, 34750), (111, 34768), (122, 34837),

Gene: Kwadwo_34 Start: 33658, Stop: 34044, Start Num: 49

Candidate Starts for Kwadwo_34:

(40, 33517), (Start: 43 @33553 has 1 MA's), (Start: 49 @33658 has 281 MA's), (56, 33697), (64, 33733), (66, 33736), (87, 33844), (91, 33871), (105, 33943), (117, 34003),

Gene: Kwksand96_34 Start: 33527, Stop: 33913, Start Num: 49

Candidate Starts for Kwksand96_34:

(40, 33386), (Start: 43 @33422 has 1 MA's), (Start: 49 @33527 has 281 MA's), (56, 33566), (64, 33602), (66, 33605), (87, 33713), (91, 33740), (105, 33812), (117, 33872),

Gene: Labeouficaum_34 Start: 33522, Stop: 33908, Start Num: 49

Candidate Starts for Labeouficaum_34:

(40, 33381), (Start: 43 @33417 has 1 MA's), (Start: 49 @33522 has 281 MA's), (56, 33561), (64, 33597), (66, 33600), (87, 33708), (91, 33735), (105, 33807), (117, 33867),

Gene: Lars_35 Start: 34393, Stop: 34782, Start Num: 49

Candidate Starts for Lars_35:

(40, 34252), (Start: 43 @34288 has 1 MA's), (Start: 49 @34393 has 281 MA's), (56, 34432), (64, 34468), (78, 34543), (87, 34579), (91, 34606), (95, 34642), (105, 34678), (107, 34681), (117, 34738), (124, 34771),

Gene: LasagnaCat_35 Start: 33960, Stop: 34346, Start Num: 49

Candidate Starts for LasagnaCat_35:

(40, 33819), (Start: 43 @33855 has 1 MA's), (Start: 49 @33960 has 281 MA's), (56, 33999), (64, 34035), (66, 34038), (87, 34146), (91, 34173), (105, 34245), (117, 34305),

Gene: Lasso_35 Start: 33933, Stop: 34319, Start Num: 49

Candidate Starts for Lasso_35:

(40, 33792), (Start: 43 @33828 has 1 MA's), (Start: 49 @33933 has 281 MA's), (56, 33972), (64, 34008), (66, 34011), (87, 34119), (91, 34146), (105, 34218), (117, 34278),

Gene: Laurie_35 Start: 33756, Stop: 34178, Start Num: 50

Candidate Starts for Laurie_35:

(Start: 50 @33756 has 66 MA's), (56, 33786), (69, 33846), (81, 33939), (85, 33966), (87, 33981), (90, 34002), (92, 34011), (95, 34044), (103, 34068), (122, 34167),

Gene: LeeLot_35 Start: 33964, Stop: 34350, Start Num: 49

Candidate Starts for LeeLot_35:

(40, 33823), (Start: 43 @33859 has 1 MA's), (Start: 49 @33964 has 281 MA's), (56, 34003), (64, 34039), (66, 34042), (87, 34150), (91, 34177), (105, 34249), (117, 34309),

Gene: Lego3393_35 Start: 33969, Stop: 34355, Start Num: 49

Candidate Starts for Lego3393_35:

(40, 33828), (Start: 43 @33864 has 1 MA's), (Start: 49 @33969 has 281 MA's), (56, 34008), (64, 34044), (66, 34047), (87, 34155), (91, 34182), (105, 34254), (117, 34314),

Gene: Legolas_34 Start: 33674, Stop: 34060, Start Num: 49

Candidate Starts for Legolas_34:

(40, 33533), (Start: 43 @33569 has 1 MA's), (Start: 49 @33674 has 281 MA's), (56, 33713), (64, 33749), (66, 33752), (87, 33860), (91, 33887), (105, 33959), (117, 34019),

Gene: LeiMonet_35 Start: 33665, Stop: 34051, Start Num: 49

Candidate Starts for LeiMonet_35:

(40, 33524), (Start: 43 @33560 has 1 MA's), (Start: 49 @33665 has 281 MA's), (56, 33704), (64, 33740), (66, 33743), (87, 33851), (91, 33878), (105, 33950), (117, 34010),

Gene: LemonSlice_35 Start: 33661, Stop: 34047, Start Num: 49

Candidate Starts for LemonSlice_35:

(40, 33520), (Start: 43 @33556 has 1 MA's), (Start: 49 @33661 has 281 MA's), (56, 33700), (64, 33736), (66, 33739), (87, 33847), (91, 33874), (105, 33946), (117, 34006),

Gene: Lephleur_35 Start: 34286, Stop: 34675, Start Num: 49

Candidate Starts for Lephleur_35:

(40, 34145), (Start: 43 @34181 has 1 MA's), (Start: 49 @34286 has 281 MA's), (56, 34325), (64, 34361), (78, 34436), (87, 34472), (91, 34499), (95, 34535), (105, 34571), (107, 34574), (117, 34631), (124, 34664),

Gene: LestyG_35 Start: 33844, Stop: 34269, Start Num: 50

Candidate Starts for LestyG_35:

(Start: 43 @33739 has 1 MA's), (Start: 50 @33844 has 66 MA's), (72, 33955), (74, 33964), (87, 34072), (90, 34093), (93, 34129), (95, 34135), (101, 34147), (104, 34171), (111, 34189), (122, 34258),

Gene: LilMcDreamy_30 Start: 33312, Stop: 33695, Start Num: 52

Candidate Starts for LilMcDreamy_30:

(Start: 52 @33312 has 2 MA's), (56, 33342), (57, 33354), (66, 33378), (75, 33423), (77, 33438), (86, 33489), (87, 33492), (90, 33513), (92, 33522), (97, 33558), (113, 33636), (117, 33654), (119, 33666), (122, 33681),

Gene: LizLemon_35 Start: 34402, Stop: 34791, Start Num: 49

Candidate Starts for LizLemon_35:

(40, 34261), (Start: 43 @34297 has 1 MA's), (Start: 49 @34402 has 281 MA's), (56, 34441), (87, 34588), (91, 34615), (95, 34651), (105, 34687), (107, 34690), (117, 34747), (124, 34780),

Gene: Lolalove_32 Start: 34185, Stop: 34538, Start Num: 53

Candidate Starts for Lolalove_32:

(Start: 53 @34185 has 22 MA's), (56, 34206), (61, 34233), (82, 34335), (92, 34371), (109, 34452), (110, 34455), (121, 34518),

Gene: Longacauda_34 Start: 33666, Stop: 34052, Start Num: 49

Candidate Starts for Longacauda_34:

(40, 33525), (Start: 43 @33561 has 1 MA's), (Start: 49 @33666 has 281 MA's), (56, 33705), (64, 33741), (66, 33744), (87, 33852), (91, 33879), (105, 33951), (117, 34011),

Gene: Lopsy_34 Start: 33516, Stop: 33902, Start Num: 49

Candidate Starts for Lopsy_34:

(40, 33375), (Start: 43 @33411 has 1 MA's), (Start: 49 @33516 has 281 MA's), (56, 33555), (64, 33591), (66, 33594), (87, 33702), (91, 33729), (105, 33801), (117, 33861),

Gene: LostAndPhound_34 Start: 33667, Stop: 34053, Start Num: 49

Candidate Starts for LostAndPhound_34:

(40, 33526), (Start: 43 @33562 has 1 MA's), (Start: 49 @33667 has 281 MA's), (56, 33706), (64, 33742), (66, 33745), (87, 33853), (91, 33880), (105, 33952), (117, 34012),

Gene: LuckyMarjie_34 Start: 33676, Stop: 34062, Start Num: 49

Candidate Starts for LuckyMarjie_34:

(40, 33535), (Start: 43 @33571 has 1 MA's), (Start: 49 @33676 has 281 MA's), (56, 33715), (64, 33751), (66, 33754), (87, 33862), (91, 33889), (105, 33961), (117, 34021),

Gene: Lulumae_34 Start: 33658, Stop: 34044, Start Num: 49

Candidate Starts for Lulumae_34:

(40, 33517), (Start: 43 @33553 has 1 MA's), (Start: 49 @33658 has 281 MA's), (56, 33697), (64, 33733), (66, 33736), (87, 33844), (91, 33871), (105, 33943), (117, 34003),

Gene: Lulwa_35 Start: 33945, Stop: 34331, Start Num: 49

Candidate Starts for Lulwa_35:

(40, 33804), (Start: 43 @33840 has 1 MA's), (Start: 49 @33945 has 281 MA's), (56, 33984), (64, 34020), (66, 34023), (87, 34131), (91, 34158), (105, 34230), (117, 34290),

Gene: Lumine_34 Start: 33654, Stop: 34040, Start Num: 49

Candidate Starts for Lumine_34:

(40, 33513), (Start: 43 @33549 has 1 MA's), (Start: 49 @33654 has 281 MA's), (56, 33693), (64, 33729), (66, 33732), (87, 33840), (91, 33867), (105, 33939), (117, 33999),

Gene: MOOREtheMARYer_26 Start: 25062, Stop: 25418, Start Num: 50

Candidate Starts for MOOREtheMARYer_26:

(Start: 50 @25062 has 66 MA's), (55, 25089), (57, 25110), (59, 25119), (71, 25164), (89, 25242), (99, 25290), (102, 25293), (107, 25320), (108, 25326),

Gene: MRabcd_34 Start: 33658, Stop: 34044, Start Num: 49

Candidate Starts for MRabcd_34:

(40, 33517), (Start: 43 @33553 has 1 MA's), (Start: 49 @33658 has 281 MA's), (56, 33697), (64, 33733), (66, 33736), (87, 33844), (91, 33871), (105, 33943), (117, 34003),

Gene: Mag7_34 Start: 33564, Stop: 33950, Start Num: 49

Candidate Starts for Mag7_34:

(40, 33423), (Start: 43 @33459 has 1 MA's), (Start: 49 @33564 has 281 MA's), (56, 33603), (64, 33639), (66, 33642), (87, 33750), (91, 33777), (105, 33849), (117, 33909),

Gene: Magic8_35 Start: 33999, Stop: 34385, Start Num: 49

Candidate Starts for Magic8_35:

(40, 33858), (Start: 43 @33894 has 1 MA's), (Start: 49 @33999 has 281 MA's), (56, 34038), (64, 34074), (66, 34077), (87, 34185), (91, 34212), (105, 34284), (117, 34344),

Gene: Magpie_31 Start: 34021, Stop: 34374, Start Num: 53

Candidate Starts for Magpie_31:

(Start: 53 @34021 has 22 MA's), (56, 34042), (61, 34069), (82, 34171), (92, 34207), (109, 34288), (110, 34291), (121, 34354),

Gene: Mana_34 Start: 33673, Stop: 34059, Start Num: 49

Candidate Starts for Mana_34:

(40, 33532), (Start: 43 @33568 has 1 MA's), (Start: 49 @33673 has 281 MA's), (56, 33712), (64, 33748), (66, 33751), (87, 33859), (91, 33886), (105, 33958), (117, 34018),

Gene: Manad_34 Start: 33515, Stop: 33901, Start Num: 49

Candidate Starts for Manad_34:

(40, 33374), (Start: 43 @33410 has 1 MA's), (Start: 49 @33515 has 281 MA's), (56, 33554), (64, 33590), (66, 33593), (87, 33701), (91, 33728), (105, 33800), (117, 33860),

Gene: Mao1_29 Start: 30339, Stop: 30767, Start Num: 49

Candidate Starts for Mao1_29:

(Start: 43 @30234 has 1 MA's), (Start: 49 @30339 has 281 MA's), (95, 30630), (105, 30666),

Gene: Marley1013_35 Start: 34622, Stop: 35047, Start Num: 50

Candidate Starts for Marley1013_35:

(Start: 43 @34517 has 1 MA's), (Start: 50 @34622 has 66 MA's), (67, 34700), (72, 34733), (74, 34742), (90, 34871), (93, 34907), (95, 34913), (101, 34925), (104, 34949), (111, 34967), (122, 35036),

Gene: Maru_34 Start: 33616, Stop: 34002, Start Num: 49

Candidate Starts for Maru_34:

(40, 33475), (Start: 43 @33511 has 1 MA's), (Start: 49 @33616 has 281 MA's), (56, 33655), (64, 33691), (66, 33694), (87, 33802), (91, 33829), (105, 33901), (117, 33961),

Gene: Mask_30 Start: 30332, Stop: 30760, Start Num: 49

Candidate Starts for Mask_30:

(Start: 43 @30227 has 1 MA's), (Start: 49 @30332 has 281 MA's), (95, 30623), (105, 30659),

Gene: Maskar_34 Start: 33513, Stop: 33899, Start Num: 49

Candidate Starts for Maskar_34:

(40, 33372), (Start: 43 @33408 has 1 MA's), (Start: 49 @33513 has 281 MA's), (56, 33552), (64, 33588), (66, 33591), (87, 33699), (91, 33726), (105, 33798), (117, 33858),

Gene: MasterPo_35 Start: 34289, Stop: 34678, Start Num: 49

Candidate Starts for MasterPo_35:

(40, 34148), (Start: 43 @34184 has 1 MA's), (Start: 49 @34289 has 281 MA's), (56, 34328), (64, 34364), (78, 34439), (87, 34475), (91, 34502), (95, 34538), (105, 34574), (107, 34577), (117, 34634), (124, 34667),

Gene: Matalotodo_34 Start: 33959, Stop: 34345, Start Num: 49

Candidate Starts for Matalotodo_34:

(40, 33818), (Start: 43 @33854 has 1 MA's), (Start: 49 @33959 has 281 MA's), (56, 33998), (64, 34034), (66, 34037), (87, 34145), (91, 34172), (105, 34244), (117, 34304),

Gene: Mcshane_34 Start: 33656, Stop: 34042, Start Num: 49

Candidate Starts for Mcshane_34:

(40, 33515), (Start: 43 @33551 has 1 MA's), (Start: 49 @33656 has 281 MA's), (56, 33695), (64, 33731), (66, 33734), (87, 33842), (91, 33869), (105, 33941), (117, 34001),

Gene: Mecca_34 Start: 33659, Stop: 34045, Start Num: 49

Candidate Starts for Mecca_34:

(40, 33518), (Start: 43 @33554 has 1 MA's), (Start: 49 @33659 has 281 MA's), (56, 33698), (64, 33734), (66, 33737), (87, 33845), (91, 33872), (105, 33944), (117, 34004),

Gene: Megabear_27 Start: 30948, Stop: 31370, Start Num: 50

Candidate Starts for Megabear_27:

(Start: 50 @30948 has 66 MA's), (56, 30978), (69, 31038), (74, 31065), (85, 31158), (87, 31173), (93, 31230), (94, 31233), (95, 31236), (103, 31260), (112, 31299),

Gene: Megamind20_35 Start: 33681, Stop: 34067, Start Num: 49

Candidate Starts for Megamind20_35:

(40, 33540), (Start: 43 @33576 has 1 MA's), (Start: 49 @33681 has 281 MA's), (56, 33720), (64, 33756), (66, 33759), (87, 33867), (91, 33894), (105, 33966), (117, 34026),

Gene: Megatron_35 Start: 33957, Stop: 34343, Start Num: 49

Candidate Starts for Megatron_35:

(40, 33816), (Start: 43 @33852 has 1 MA's), (Start: 49 @33957 has 281 MA's), (56, 33996), (64, 34032), (66, 34035), (87, 34143), (91, 34170), (105, 34242), (117, 34302),

Gene: Melc17_35 Start: 33954, Stop: 34340, Start Num: 49

Candidate Starts for Melc17_35:

(40, 33813), (Start: 43 @33849 has 1 MA's), (Start: 49 @33954 has 281 MA's), (56, 33993), (64, 34029), (66, 34032), (87, 34140), (91, 34167), (105, 34239), (117, 34299),

Gene: MelsMeow_34 Start: 33562, Stop: 33948, Start Num: 49

Candidate Starts for MelsMeow_34:

(40, 33421), (Start: 43 @33457 has 1 MA's), (Start: 49 @33562 has 281 MA's), (56, 33601), (64, 33637), (66, 33640), (87, 33748), (91, 33775), (105, 33847), (117, 33907),

Gene: Mesh1_35 Start: 33971, Stop: 34357, Start Num: 49

Candidate Starts for Mesh1_35:

(40, 33830), (Start: 43 @33866 has 1 MA's), (Start: 49 @33971 has 281 MA's), (56, 34010), (64, 34046), (66, 34049), (87, 34157), (91, 34184), (105, 34256), (117, 34316),

Gene: MichaelPhcott_34 Start: 33561, Stop: 33947, Start Num: 49

Candidate Starts for MichaelPhcott_34:

(40, 33420), (Start: 43 @33456 has 1 MA's), (Start: 49 @33561 has 281 MA's), (56, 33600), (64, 33636), (66, 33639), (87, 33747), (91, 33774), (105, 33846), (117, 33906),

Gene: Mikota_35 Start: 33944, Stop: 34330, Start Num: 49

Candidate Starts for Mikota_35:

(40, 33803), (Start: 43 @33839 has 1 MA's), (Start: 49 @33944 has 281 MA's), (56, 33983), (64, 34019), (66, 34022), (87, 34130), (91, 34157), (105, 34229), (117, 34289),

Gene: MiniBoss_35 Start: 33950, Stop: 34336, Start Num: 49

Candidate Starts for MiniBoss_35:

(40, 33809), (Start: 43 @33845 has 1 MA's), (Start: 49 @33950 has 281 MA's), (56, 33989), (64, 34025), (66, 34028), (87, 34136), (91, 34163), (105, 34235), (117, 34295),

Gene: MitKao_35 Start: 33665, Stop: 34051, Start Num: 49

Candidate Starts for MitKao_35:

(40, 33524), (Start: 43 @33560 has 1 MA's), (Start: 49 @33665 has 281 MA's), (56, 33704), (64, 33740), (66, 33743), (87, 33851), (91, 33878), (105, 33950), (117, 34010),

Gene: Mithril_32 Start: 34189, Stop: 34542, Start Num: 53

Candidate Starts for Mithril_32:

(Start: 53 @34189 has 22 MA's), (56, 34210), (61, 34237), (82, 34339), (92, 34375), (109, 34456), (110, 34459), (121, 34522),

Gene: MmasiCarm_35 Start: 33826, Stop: 34251, Start Num: 50

Candidate Starts for MmasiCarm_35:

(Start: 43 @33721 has 1 MA's), (Start: 50 @33826 has 66 MA's), (67, 33904), (72, 33937), (74, 33946), (87, 34054), (90, 34075), (93, 34111), (95, 34117), (101, 34129), (104, 34153), (111, 34171), (122, 34240),

Gene: Morgushi_35 Start: 33666, Stop: 34052, Start Num: 49

Candidate Starts for Morgushi_35:

(40, 33525), (Start: 43 @33561 has 1 MA's), (Start: 49 @33666 has 281 MA's), (56, 33705), (64, 33741), (66, 33744), (87, 33852), (91, 33879), (105, 33951), (117, 34011),

Gene: Mortcellus_34 Start: 34478, Stop: 34903, Start Num: 50

Candidate Starts for Mortcellus_34:

(Start: 43 @34373 has 1 MA's), (Start: 50 @34478 has 66 MA's), (67, 34556), (72, 34589), (74, 34598), (90, 34727), (92, 34736), (93, 34763), (95, 34769), (101, 34781), (104, 34805), (111, 34823),

(122, 34892),

Gene: Morty_35 Start: 33966, Stop: 34352, Start Num: 49

Candidate Starts for Morty_35:

(40, 33825), (Start: 43 @33861 has 1 MA's), (Start: 49 @33966 has 281 MA's), (56, 34005), (64, 34041), (66, 34044), (87, 34152), (91, 34179), (105, 34251), (117, 34311),

Gene: Morty007_35 Start: 34622, Stop: 35047, Start Num: 50

Candidate Starts for Morty007_35:

(Start: 43 @34517 has 1 MA's), (Start: 50 @34622 has 66 MA's), (67, 34700), (72, 34733), (74, 34742), (90, 34871), (93, 34907), (95, 34913), (101, 34925), (104, 34949), (111, 34967), (122, 35036),

Gene: Mosaic_34 Start: 33671, Stop: 34057, Start Num: 49

Candidate Starts for Mosaic_34:

(40, 33530), (Start: 43 @33566 has 1 MA's), (Start: 49 @33671 has 281 MA's), (56, 33710), (64, 33746), (66, 33749), (87, 33857), (91, 33884), (105, 33956), (117, 34016),

Gene: MrPhizzler_34 Start: 33749, Stop: 34060, Start Num: 64

Candidate Starts for MrPhizzler_34:

(40, 33533), (Start: 43 @33569 has 1 MA's), (Start: 49 @33674 has 281 MA's), (56, 33713), (64, 33749), (66, 33752), (87, 33860), (91, 33887), (105, 33959), (117, 34019),

Gene: Mudslide_32 Start: 34421, Stop: 34774, Start Num: 53

Candidate Starts for Mudslide_32:

(Start: 53 @34421 has 22 MA's), (56, 34442), (61, 34469), (82, 34571), (92, 34607), (109, 34688), (110, 34691), (121, 34754),

Gene: Mulan_34 Start: 33683, Stop: 34069, Start Num: 49

Candidate Starts for Mulan_34:

(40, 33542), (Start: 43 @33578 has 1 MA's), (Start: 49 @33683 has 281 MA's), (56, 33722), (64, 33758), (66, 33761), (87, 33869), (91, 33896), (105, 33968), (117, 34028),

Gene: Murdoc_35 Start: 33958, Stop: 34344, Start Num: 49

Candidate Starts for Murdoc_35:

(40, 33817), (Start: 43 @33853 has 1 MA's), (Start: 49 @33958 has 281 MA's), (56, 33997), (64, 34033), (66, 34036), (87, 34144), (91, 34171), (105, 34243), (117, 34303),

Gene: Mutante_34 Start: 33665, Stop: 34051, Start Num: 49

Candidate Starts for Mutante_34:

(40, 33524), (Start: 43 @33560 has 1 MA's), (Start: 49 @33665 has 281 MA's), (56, 33704), (64, 33740), (66, 33743), (87, 33851), (91, 33878), (105, 33950), (117, 34010),

Gene: Mysterious_35 Start: 34790, Stop: 35224, Start Num: 50

Candidate Starts for Mysterious_35:

(Start: 50 @34790 has 66 MA's), (56, 34832), (57, 34844), (65, 34871), (73, 34913), (78, 34967), (83, 34994), (87, 35024), (92, 35054),

Gene: Nacho_0035 Start: 33960, Stop: 34346, Start Num: 49

Candidate Starts for Nacho_0035:

(40, 33819), (Start: 43 @33855 has 1 MA's), (Start: 49 @33960 has 281 MA's), (56, 33999), (64, 34035), (66, 34038), (87, 34146), (91, 34173), (105, 34245), (117, 34305),

Gene: Nanao_31 Start: 33147, Stop: 33500, Start Num: 53

Candidate Starts for Nanao_31:

(Start: 53 @33147 has 22 MA's), (56, 33168), (61, 33195), (82, 33297), (92, 33333), (109, 33414), (110, 33417), (121, 33480),

Gene: Nangang_34 Start: 34477, Stop: 34911, Start Num: 50

Candidate Starts for Nangang_34:

(39, 34294), (Start: 43 @34372 has 1 MA's), (Start: 50 @34477 has 66 MA's), (83, 34681), (87, 34711),

Gene: Neos5_35 Start: 34641, Stop: 35066, Start Num: 50

Candidate Starts for Neos5_35:

(Start: 43 @34536 has 1 MA's), (Start: 50 @34641 has 66 MA's), (67, 34719), (72, 34752), (74, 34761), (90, 34890), (93, 34926), (95, 34932), (101, 34944), (104, 34968), (111, 34986), (122, 35055),

Gene: Newman_35 Start: 33957, Stop: 34343, Start Num: 49

Candidate Starts for Newman_35:

(40, 33816), (Start: 43 @33852 has 1 MA's), (Start: 49 @33957 has 281 MA's), (56, 33996), (64, 34032), (66, 34035), (87, 34143), (91, 34170), (105, 34242), (117, 34302),

Gene: Nicole21_35 Start: 33955, Stop: 34341, Start Num: 49

Candidate Starts for Nicole21_35:

(40, 33814), (Start: 43 @33850 has 1 MA's), (Start: 49 @33955 has 281 MA's), (56, 33994), (64, 34030), (66, 34033), (87, 34141), (91, 34168), (105, 34240), (117, 34300),

Gene: Nigel_30 Start: 33066, Stop: 33416, Start Num: 53

Candidate Starts for Nigel_30:

(Start: 53 @33066 has 22 MA's), (56, 33087), (61, 33114), (82, 33213), (98, 33285), (109, 33330), (121, 33396),

Gene: Nozo_35 Start: 34602, Stop: 35027, Start Num: 50

Candidate Starts for Nozo_35:

(Start: 43 @34497 has 1 MA's), (Start: 50 @34602 has 66 MA's), (67, 34680), (72, 34713), (74, 34722), (90, 34851), (93, 34887), (95, 34893), (101, 34905), (104, 34929), (111, 34947), (122, 35016),

Gene: Numberten_35 Start: 33964, Stop: 34350, Start Num: 49

Candidate Starts for Numberten_35:

(40, 33823), (Start: 43 @33859 has 1 MA's), (Start: 49 @33964 has 281 MA's), (56, 34003), (64, 34039), (66, 34042), (87, 34150), (91, 34177), (105, 34249), (117, 34309),

Gene: Nyala_34 Start: 33657, Stop: 34043, Start Num: 49

Candidate Starts for Nyala_34:

(40, 33516), (Start: 43 @33552 has 1 MA's), (Start: 49 @33657 has 281 MA's), (56, 33696), (64, 33732), (66, 33735), (87, 33843), (91, 33870), (105, 33942), (117, 34002),

Gene: OSmaximus_35 Start: 33999, Stop: 34385, Start Num: 49

Candidate Starts for OSmaximus_35:

(40, 33858), (Start: 43 @33894 has 1 MA's), (Start: 49 @33999 has 281 MA's), (56, 34038), (64, 34074), (66, 34077), (87, 34185), (91, 34212), (105, 34284), (117, 34344),

Gene: Obutu_35 Start: 33826, Stop: 34251, Start Num: 50

Candidate Starts for Obutu_35:

(Start: 43 @33721 has 1 MA's), (Start: 50 @33826 has 66 MA's), (67, 33904), (72, 33937), (74, 33946), (87, 34054), (90, 34075), (93, 34111), (95, 34117), (101, 34129), (104, 34153), (111, 34171),

(122, 34240),

Gene: Olak_35 Start: 33660, Stop: 34046, Start Num: 49

Candidate Starts for Olak_35:

(13, 33039), (18, 33123), (25, 33180), (28, 33189), (30, 33195), (40, 33519), (Start: 43 @33555 has 1 MA's), (Start: 49 @33660 has 281 MA's), (56, 33699), (64, 33735), (66, 33738), (87, 33846), (91, 33873), (105, 33945), (117, 34005),

Gene: Oline_34 Start: 33526, Stop: 33912, Start Num: 49

Candidate Starts for Oline_34:

(40, 33385), (Start: 43 @33421 has 1 MA's), (Start: 49 @33526 has 281 MA's), (56, 33565), (64, 33601), (66, 33604), (87, 33712), (91, 33739), (105, 33811), (117, 33871),

Gene: Olive_35 Start: 33947, Stop: 34333, Start Num: 49

Candidate Starts for Olive_35:

(40, 33806), (Start: 43 @33842 has 1 MA's), (Start: 49 @33947 has 281 MA's), (56, 33986), (64, 34022), (66, 34025), (87, 34133), (91, 34160), (105, 34232), (117, 34292),

Gene: OliverWalter_35 Start: 33969, Stop: 34355, Start Num: 49

Candidate Starts for OliverWalter_35:

(40, 33828), (Start: 43 @33864 has 1 MA's), (Start: 49 @33969 has 281 MA's), (56, 34008), (64, 34044), (66, 34047), (87, 34155), (91, 34182), (105, 34254), (117, 34314),

Gene: Omniscient_35 Start: 33966, Stop: 34352, Start Num: 49

Candidate Starts for Omniscient_35:

(40, 33825), (Start: 43 @33861 has 1 MA's), (Start: 49 @33966 has 281 MA's), (56, 34005), (64, 34041), (66, 34044), (87, 34152), (91, 34179), (105, 34251), (117, 34311),

Gene: Oosterbaan_35 Start: 33957, Stop: 34343, Start Num: 49

Candidate Starts for Oosterbaan_35:

(40, 33816), (Start: 43 @33852 has 1 MA's), (Start: 49 @33957 has 281 MA's), (56, 33996), (64, 34032), (66, 34035), (87, 34143), (91, 34170), (105, 34242), (117, 34302),

Gene: Opia_35 Start: 34275, Stop: 34664, Start Num: 49

Candidate Starts for Opia_35:

(9, 33513), (11, 33630), (14, 33717), (17, 33738), (24, 33795), (27, 33804), (29, 33810), (31, 33816), (40, 34134), (Start: 43 @34170 has 1 MA's), (Start: 49 @34275 has 281 MA's), (56, 34314), (64, 34350), (78, 34425), (87, 34461), (91, 34488), (95, 34524), (105, 34560), (107, 34563), (117, 34620), (124, 34653),

Gene: OrangeOswald_35 Start: 33843, Stop: 34268, Start Num: 50

Candidate Starts for OrangeOswald_35:

(Start: 43 @33738 has 1 MA's), (Start: 50 @33843 has 66 MA's), (67, 33921), (72, 33954), (74, 33963), (90, 34092), (93, 34128), (95, 34134), (101, 34146), (104, 34170), (111, 34188), (122, 34257),

Gene: Orfeu_34 Start: 33743, Stop: 34051, Start Num: 66

Candidate Starts for Orfeu_34:

(40, 33524), (Start: 43 @33560 has 1 MA's), (Start: 49 @33665 has 281 MA's), (56, 33704), (64, 33740), (66, 33743), (87, 33851), (91, 33878), (105, 33950), (117, 34010),

Gene: Orion_35 Start: 33955, Stop: 34341, Start Num: 49

Candidate Starts for Orion_35:

(40, 33814), (Start: 43 @33850 has 1 MA's), (Start: 49 @33955 has 281 MA's), (56, 33994), (64, 34030), (66, 34033), (87, 34141), (91, 34168), (105, 34240), (117, 34300),

Gene: Orwigg_35 Start: 33653, Stop: 34039, Start Num: 49

Candidate Starts for Orwigg_35:

(40, 33512), (Start: 43 @33548 has 1 MA's), (Start: 49 @33653 has 281 MA's), (56, 33692), (64, 33728), (66, 33731), (87, 33839), (91, 33866), (105, 33938), (117, 33998),

Gene: PG1_35 Start: 33968, Stop: 34354, Start Num: 49

Candidate Starts for PG1_35:

(40, 33827), (Start: 43 @33863 has 1 MA's), (Start: 49 @33968 has 281 MA's), (56, 34007), (64, 34043), (66, 34046), (87, 34154), (91, 34181), (105, 34253), (117, 34313),

Gene: PR_27 Start: 31552, Stop: 31974, Start Num: 50

Candidate Starts for PR_27:

(Start: 50 @31552 has 66 MA's), (56, 31582), (69, 31642), (74, 31669), (85, 31762), (87, 31777), (90, 31798), (93, 31834), (94, 31837), (95, 31840), (103, 31864), (106, 31879), (112, 31903),

Gene: Pace1224_25 Start: 24893, Stop: 25249, Start Num: 50

Candidate Starts for Pace1224_25:

(Start: 50 @24893 has 66 MA's), (54, 24911), (56, 24929), (57, 24941), (58, 24947), (59, 24950), (71, 24995), (89, 25073), (99, 25121), (102, 25124), (108, 25157),

Gene: Pacifista_36 Start: 33659, Stop: 34045, Start Num: 49

Candidate Starts for Pacifista_36:

(40, 33518), (Start: 43 @33554 has 1 MA's), (Start: 49 @33659 has 281 MA's), (56, 33698), (64, 33734), (66, 33737), (87, 33845), (91, 33872), (105, 33944), (117, 34004),

Gene: PenguinLover67_36 Start: 35506, Stop: 35865, Start Num: 51

Candidate Starts for PenguinLover67_36:

(Start: 51 @35506 has 5 MA's), (61, 35554), (69, 35578), (79, 35632), (107, 35767), (114, 35815), (120, 35839),

Gene: Phaedrus_33 Start: 33763, Stop: 34188, Start Num: 50

Candidate Starts for Phaedrus_33:

(Start: 43 @33658 has 1 MA's), (Start: 50 @33763 has 66 MA's), (67, 33841), (72, 33874), (74, 33883), (87, 33991), (90, 34012), (92, 34021), (93, 34048), (95, 34054), (101, 34066), (104, 34090), (111, 34108), (122, 34177),

Gene: Phamished_35 Start: 33963, Stop: 34349, Start Num: 49

Candidate Starts for Phamished_35:

(40, 33822), (Start: 43 @33858 has 1 MA's), (Start: 49 @33963 has 281 MA's), (56, 34002), (64, 34038), (66, 34041), (87, 34149), (91, 34176), (105, 34248), (117, 34308),

Gene: Phantasmagoria_35 Start: 34287, Stop: 34676, Start Num: 49

Candidate Starts for Phantasmagoria_35:

(40, 34146), (Start: 43 @34182 has 1 MA's), (Start: 49 @34287 has 281 MA's), (56, 34326), (87, 34473), (91, 34500), (95, 34536), (105, 34572), (107, 34575), (117, 34632), (124, 34665),

Gene: Phareon_35 Start: 33667, Stop: 34053, Start Num: 49

Candidate Starts for Phareon_35:

(40, 33526), (Start: 43 @33562 has 1 MA's), (Start: 49 @33667 has 281 MA's), (56, 33706), (64, 33742), (66, 33745), (87, 33853), (91, 33880), (105, 33952), (117, 34012),

Gene: PhatCats2014_35 Start: 33972, Stop: 34358, Start Num: 49

Candidate Starts for PhatCats2014_35:

(40, 33831), (Start: 43 @33867 has 1 MA's), (Start: 49 @33972 has 281 MA's), (56, 34011), (64, 34047), (66, 34050), (87, 34158), (91, 34185), (105, 34257), (117, 34317),

Gene: PhatLouie_35 Start: 33961, Stop: 34347, Start Num: 49

Candidate Starts for PhatLouie_35:

(40, 33820), (Start: 43 @33856 has 1 MA's), (Start: 49 @33961 has 281 MA's), (56, 34000), (64, 34036), (66, 34039), (87, 34147), (91, 34174), (105, 34246), (117, 34306),

Gene: Phayeta_36 Start: 33708, Stop: 34133, Start Num: 50

Candidate Starts for Phayeta_36:

(Start: 43 @33603 has 1 MA's), (Start: 50 @33708 has 66 MA's), (72, 33819), (74, 33828), (87, 33936), (90, 33957), (93, 33993), (95, 33999), (101, 34011), (104, 34035), (111, 34053), (122, 34122),

Gene: Phelemich_34 Start: 34789, Stop: 35223, Start Num: 50

Candidate Starts for Phelemich_34:

(Start: 43 @34684 has 1 MA's), (Start: 50 @34789 has 66 MA's), (56, 34831), (57, 34843), (59, 34852), (65, 34870), (72, 34906), (78, 34966), (83, 34993), (87, 35023), (92, 35053),

Gene: PhenghisKhan_34 Start: 33567, Stop: 33953, Start Num: 49

Candidate Starts for PhenghisKhan_34:

(40, 33426), (Start: 43 @33462 has 1 MA's), (Start: 49 @33567 has 281 MA's), (56, 33606), (64, 33642), (66, 33645), (87, 33753), (91, 33780), (105, 33852), (117, 33912),

Gene: Pherdinand_35 Start: 33963, Stop: 34349, Start Num: 49

Candidate Starts for Pherdinand_35:

(40, 33822), (Start: 43 @33858 has 1 MA's), (Start: 49 @33963 has 281 MA's), (56, 34002), (64, 34038), (66, 34041), (87, 34149), (91, 34176), (105, 34248), (117, 34308),

Gene: Phergie_34 Start: 33558, Stop: 33944, Start Num: 49

Candidate Starts for Phergie_34:

(40, 33417), (Start: 43 @33453 has 1 MA's), (Start: 49 @33558 has 281 MA's), (56, 33597), (64, 33633), (66, 33636), (87, 33744), (91, 33771), (105, 33843), (117, 33903),

Gene: Philly_34 Start: 33694, Stop: 34119, Start Num: 50

Candidate Starts for Philly_34:

(Start: 43 @33589 has 1 MA's), (Start: 50 @33694 has 66 MA's), (67, 33772), (72, 33805), (74, 33814), (87, 33922), (90, 33943), (93, 33979), (95, 33985), (101, 33997), (104, 34021), (111, 34039), (122, 34108),

Gene: Phipps_35 Start: 33934, Stop: 34320, Start Num: 49

Candidate Starts for Phipps_35:

(40, 33793), (Start: 43 @33829 has 1 MA's), (Start: 49 @33934 has 281 MA's), (56, 33973), (64, 34009), (66, 34012), (87, 34120), (91, 34147), (105, 34219), (117, 34279),

Gene: Phleuron_34 Start: 33564, Stop: 33950, Start Num: 49

Candidate Starts for Phleuron_34:

(40, 33423), (Start: 43 @33459 has 1 MA's), (Start: 49 @33564 has 281 MA's), (56, 33603), (64, 33639), (66, 33642), (87, 33750), (91, 33777), (105, 33849), (117, 33909),

Gene: Phlyer_35 Start: 34582, Stop: 35007, Start Num: 50

Candidate Starts for Phlyer_35:

(Start: 43 @34477 has 1 MA's), (Start: 50 @34582 has 66 MA's), (67, 34660), (72, 34693), (74, 34702), (87, 34810), (90, 34831), (92, 34840), (93, 34867), (95, 34873), (101, 34885), (104, 34909), (111, 34927), (122, 34996),

Gene: PhrankReynolds_34 Start: 33564, Stop: 33950, Start Num: 49

Candidate Starts for PhrankReynolds_34:

(40, 33423), (Start: 43 @33459 has 1 MA's), (Start: 49 @33564 has 281 MA's), (56, 33603), (64, 33639), (66, 33642), (87, 33750), (91, 33777), (105, 33849), (117, 33909),

Gene: PhrodoBaggins_34 Start: 33951, Stop: 34337, Start Num: 49

Candidate Starts for PhrodoBaggins_34:

(40, 33810), (Start: 43 @33846 has 1 MA's), (Start: 49 @33951 has 281 MA's), (56, 33990), (64, 34026), (66, 34029), (87, 34137), (91, 34164), (105, 34236), (117, 34296),

Gene: Phunky_35 Start: 33964, Stop: 34350, Start Num: 49

Candidate Starts for Phunky_35:

(40, 33823), (Start: 43 @33859 has 1 MA's), (Start: 49 @33964 has 281 MA's), (56, 34003), (64, 34039), (66, 34042), (87, 34150), (91, 34177), (105, 34249), (117, 34309),

Gene: Piglet_0034 Start: 34071, Stop: 34457, Start Num: 49

Candidate Starts for Piglet_0034:

(40, 33930), (Start: 43 @33966 has 1 MA's), (Start: 49 @34071 has 281 MA's), (56, 34110), (64, 34146), (66, 34149), (87, 34257), (91, 34284), (105, 34356), (117, 34416),

Gene: PinheadLarry_35 Start: 33677, Stop: 34063, Start Num: 49

Candidate Starts for PinheadLarry_35:

(40, 33536), (Start: 43 @33572 has 1 MA's), (Start: 49 @33677 has 281 MA's), (56, 33716), (64, 33752), (66, 33755), (87, 33863), (91, 33890), (105, 33962), (117, 34022),

Gene: Pinkman_34 Start: 33520, Stop: 33906, Start Num: 49

Candidate Starts for Pinkman_34:

(40, 33379), (Start: 43 @33415 has 1 MA's), (Start: 49 @33520 has 281 MA's), (56, 33559), (64, 33595), (66, 33598), (87, 33706), (91, 33733), (105, 33805), (117, 33865),

Gene: Pinnie_26 Start: 25436, Stop: 25792, Start Num: 50

Candidate Starts for Pinnie_26:

(Start: 50 @25436 has 66 MA's), (57, 25484), (58, 25490), (59, 25493), (71, 25538), (89, 25616), (99, 25664), (102, 25667), (108, 25700),

Gene: Pipefish_37 Start: 35235, Stop: 35660, Start Num: 50

Candidate Starts for Pipefish_37:

(20, 34734), (32, 34785), (33, 34827), (39, 35058), (Start: 43 @35130 has 1 MA's), (Start: 50 @35235 has 66 MA's), (72, 35346), (74, 35355), (87, 35463), (90, 35484), (93, 35520), (94, 35523), (95, 35526), (101, 35538), (104, 35562), (111, 35580), (122, 35649),

Gene: Pipsqueak_35 Start: 33962, Stop: 34348, Start Num: 49

Candidate Starts for Pipsqueak_35:

(40, 33821), (Start: 43 @33857 has 1 MA's), (Start: 49 @33962 has 281 MA's), (56, 34001), (64, 34037), (66, 34040), (87, 34148), (91, 34175), (105, 34247), (117, 34307),

Gene: Placalicious_34 Start: 33655, Stop: 34041, Start Num: 49

Candidate Starts for Placalicious_34:

(40, 33514), (Start: 43 @33550 has 1 MA's), (Start: 49 @33655 has 281 MA's), (56, 33694), (64, 33730), (66, 33733), (87, 33841), (91, 33868), (105, 33940), (117, 34000),

Gene: Plmatters_35 Start: 33961, Stop: 34347, Start Num: 49

Candidate Starts for Plmatters_35:

(40, 33820), (Start: 43 @33856 has 1 MA's), (Start: 49 @33961 has 281 MA's), (56, 34000), (64, 34036), (66, 34039), (87, 34147), (91, 34174), (105, 34246), (117, 34306),

Gene: Podrick_35 Start: 33952, Stop: 34338, Start Num: 49

Candidate Starts for Podrick_35:

(40, 33811), (Start: 43 @33847 has 1 MA's), (Start: 49 @33952 has 281 MA's), (56, 33991), (64, 34027), (66, 34030), (87, 34138), (91, 34165), (105, 34237), (117, 34297),

Gene: Pops_35 Start: 33976, Stop: 34362, Start Num: 49

Candidate Starts for Pops_35:

(40, 33835), (Start: 43 @33871 has 1 MA's), (Start: 49 @33976 has 281 MA's), (56, 34015), (64, 34051), (66, 34054), (87, 34162), (91, 34189), (105, 34261),

Gene: Poster_31 Start: 33148, Stop: 33501, Start Num: 53

Candidate Starts for Poster_31:

(Start: 53 @33148 has 22 MA's), (56, 33169), (61, 33196), (82, 33298), (92, 33334), (109, 33415), (110, 33418), (121, 33481),

Gene: Potter_34 Start: 33676, Stop: 34062, Start Num: 49

Candidate Starts for Potter_34:

(40, 33535), (Start: 43 @33571 has 1 MA's), (Start: 49 @33676 has 281 MA's), (56, 33715), (64, 33751), (66, 33754), (87, 33862), (91, 33889), (105, 33961), (117, 34021),

Gene: Prickles_35 Start: 33952, Stop: 34338, Start Num: 49

Candidate Starts for Prickles_35:

(40, 33811), (Start: 43 @33847 has 1 MA's), (Start: 49 @33952 has 281 MA's), (56, 33991), (64, 34027), (66, 34030), (87, 34138), (91, 34165), (105, 34237), (117, 34297),

Gene: Prince_33 Start: 34331, Stop: 34684, Start Num: 53

Candidate Starts for Prince_33:

(Start: 53 @34331 has 22 MA's), (56, 34352), (61, 34379), (82, 34481), (92, 34517), (109, 34598), (110, 34601), (121, 34664),

Gene: ProfessorX_35 Start: 33947, Stop: 34333, Start Num: 49

Candidate Starts for ProfessorX_35:

(40, 33806), (Start: 43 @33842 has 1 MA's), (Start: 49 @33947 has 281 MA's), (56, 33986), (64, 34022), (66, 34025), (87, 34133), (91, 34160), (105, 34232), (117, 34292),

Gene: Puhltonio_35 Start: 33968, Stop: 34354, Start Num: 49

Candidate Starts for Puhltonio_35:

(40, 33827), (Start: 43 @33863 has 1 MA's), (Start: 49 @33968 has 281 MA's), (56, 34007), (64, 34043), (66, 34046), (87, 34154), (91, 34181), (105, 34253), (117, 34313),

Gene: QueenBeane_35 Start: 33958, Stop: 34344, Start Num: 49

Candidate Starts for QueenBeane_35:

(40, 33817), (Start: 43 @33853 has 1 MA's), (Start: 49 @33958 has 281 MA's), (56, 33997), (64, 34033), (66, 34036), (87, 34144), (91, 34171), (105, 34243), (117, 34303),

Gene: Quesadilla_36 Start: 35514, Stop: 35876, Start Num: 51
Candidate Starts for Quesadilla_36:
(Start: 51 @35514 has 5 MA's), (69, 35586), (71, 35601), (113, 35814), (114, 35823), (120, 35847),

Gene: Quisquilliae_35 Start: 34064, Stop: 34372, Start Num: 66
Candidate Starts for Quisquilliae_35:
(40, 33845), (Start: 43 @33881 has 1 MA's), (Start: 49 @33986 has 281 MA's), (56, 34025), (64, 34061), (66, 34064), (87, 34172), (91, 34199), (105, 34271), (117, 34331),

Gene: Qyrzula_33 Start: 34400, Stop: 34822, Start Num: 50
Candidate Starts for Qyrzula_33:
(15, 33857), (16, 33860), (22, 33911), (32, 33950), (33, 33992), (39, 34223), (Start: 43 @34295 has 1 MA's), (Start: 50 @34400 has 66 MA's), (56, 34430), (69, 34490), (85, 34610), (87, 34625), (90, 34646), (92, 34655), (95, 34688), (103, 34712), (122, 34811),

Gene: RagingRooster_35 Start: 33844, Stop: 34269, Start Num: 50
Candidate Starts for RagingRooster_35:
(Start: 43 @33739 has 1 MA's), (Start: 50 @33844 has 66 MA's), (67, 33922), (72, 33955), (74, 33964), (87, 34072), (90, 34093), (93, 34129), (95, 34135), (101, 34147), (104, 34171), (111, 34189), (122, 34258),

Gene: RawrgerThat_32 Start: 34176, Stop: 34529, Start Num: 53
Candidate Starts for RawrgerThat_32:
(Start: 53 @34176 has 22 MA's), (56, 34197), (61, 34224), (82, 34326), (92, 34362), (109, 34443), (110, 34446), (121, 34509),

Gene: RedMaple_34 Start: 33965, Stop: 34351, Start Num: 49
Candidate Starts for RedMaple_34:
(40, 33824), (Start: 43 @33860 has 1 MA's), (Start: 49 @33965 has 281 MA's), (56, 34004), (64, 34040), (66, 34043), (87, 34151), (91, 34178), (105, 34250), (117, 34310),

Gene: Reprobate_34 Start: 34794, Stop: 35228, Start Num: 50
Candidate Starts for Reprobate_34:
(Start: 43 @34689 has 1 MA's), (Start: 50 @34794 has 66 MA's), (56, 34836), (57, 34848), (59, 34857), (65, 34875), (72, 34911), (78, 34971), (83, 34998), (87, 35028), (92, 35058),

Gene: Rhinoforte_35 Start: 34396, Stop: 34785, Start Num: 49
Candidate Starts for Rhinoforte_35:
(40, 34255), (Start: 43 @34291 has 1 MA's), (Start: 49 @34396 has 281 MA's), (56, 34435), (64, 34471), (78, 34546), (87, 34582), (91, 34609), (95, 34645), (105, 34681), (107, 34684), (117, 34741), (124, 34774),

Gene: Rich_33 Start: 34300, Stop: 34734, Start Num: 50
Candidate Starts for Rich_33:
(39, 34120), (Start: 50 @34300 has 66 MA's), (56, 34342), (57, 34354), (65, 34381), (78, 34477), (83, 34504), (84, 34513), (87, 34534), (92, 34564), (116, 34693),

Gene: Ricotta_35 Start: 33684, Stop: 34070, Start Num: 49
Candidate Starts for Ricotta_35:
(13, 33063), (18, 33147), (25, 33204), (28, 33213), (30, 33219), (40, 33543), (Start: 43 @33579 has 1 MA's), (Start: 49 @33684 has 281 MA's), (56, 33723), (64, 33759), (66, 33762), (87, 33870), (91, 33897), (105, 33969), (117, 34029),

Gene: Riggan_35 Start: 33945, Stop: 34331, Start Num: 49

Candidate Starts for Riggan_35:

(40, 33804), (Start: 43 @33840 has 1 MA's), (Start: 49 @33945 has 281 MA's), (56, 33984), (64, 34020), (66, 34023), (87, 34131), (91, 34158), (105, 34230), (117, 34290),

Gene: Rimu_36 Start: 33769, Stop: 34080, Start Num: 64

Candidate Starts for Rimu_36:

(40, 33553), (Start: 43 @33589 has 1 MA's), (Start: 49 @33694 has 281 MA's), (56, 33733), (64, 33769), (66, 33772), (87, 33880), (91, 33907), (105, 33979), (117, 34039),

Gene: Rita1961_35 Start: 33827, Stop: 34252, Start Num: 50

Candidate Starts for Rita1961_35:

(Start: 43 @33722 has 1 MA's), (Start: 50 @33827 has 66 MA's), (67, 33905), (72, 33938), (74, 33947), (87, 34055), (90, 34076), (93, 34112), (95, 34118), (101, 34130), (104, 34154), (111, 34172), (122, 34241),

Gene: Robyn_34 Start: 33529, Stop: 33915, Start Num: 49

Candidate Starts for Robyn_34:

(40, 33388), (Start: 43 @33424 has 1 MA's), (Start: 49 @33529 has 281 MA's), (56, 33568), (64, 33604), (66, 33607), (87, 33715), (91, 33742), (105, 33814), (117, 33874),

Gene: Roliet_35 Start: 33954, Stop: 34340, Start Num: 49

Candidate Starts for Roliet_35:

(40, 33813), (Start: 43 @33849 has 1 MA's), (Start: 49 @33954 has 281 MA's), (56, 33993), (64, 34029), (66, 34032), (87, 34140), (91, 34167), (105, 34239), (117, 34299),

Gene: RomaT_35 Start: 34617, Stop: 35042, Start Num: 50

Candidate Starts for RomaT_35:

(Start: 43 @34512 has 1 MA's), (Start: 50 @34617 has 66 MA's), (67, 34695), (72, 34728), (74, 34737), (87, 34845), (90, 34866), (92, 34875), (93, 34902), (95, 34908), (101, 34920), (104, 34944), (111, 34962), (122, 35031),

Gene: Roscoe_36 Start: 34192, Stop: 34578, Start Num: 49

Candidate Starts for Roscoe_36:

(40, 34051), (Start: 43 @34087 has 1 MA's), (Start: 49 @34192 has 281 MA's), (56, 34231), (64, 34267), (66, 34270), (87, 34378), (91, 34405), (105, 34477), (117, 34537),

Gene: Rosebush_35 Start: 34403, Stop: 34792, Start Num: 49

Candidate Starts for Rosebush_35:

(40, 34262), (Start: 43 @34298 has 1 MA's), (Start: 49 @34403 has 281 MA's), (56, 34442), (64, 34478), (78, 34553), (87, 34589), (91, 34616), (95, 34652), (105, 34688), (107, 34691), (117, 34748), (124, 34781),

Gene: Roy17_35 Start: 33658, Stop: 34044, Start Num: 49

Candidate Starts for Roy17_35:

(40, 33517), (Start: 43 @33553 has 1 MA's), (Start: 49 @33658 has 281 MA's), (56, 33697), (64, 33733), (66, 33736), (87, 33844), (91, 33871), (105, 33943), (117, 34003),

Gene: SDcharge11_35 Start: 33932, Stop: 34318, Start Num: 49

Candidate Starts for SDcharge11_35:

(40, 33791), (Start: 43 @33827 has 1 MA's), (Start: 49 @33932 has 281 MA's), (56, 33971), (64, 34007), (66, 34010), (87, 34118), (91, 34145), (105, 34217), (117, 34277),

Gene: Sabella_35 Start: 34280, Stop: 34669, Start Num: 49

Candidate Starts for Sabella_35:

(40, 34139), (Start: 43 @34175 has 1 MA's), (Start: 49 @34280 has 281 MA's), (56, 34319), (64, 34355), (78, 34430), (87, 34466), (91, 34493), (95, 34529), (105, 34565), (107, 34568), (117, 34625), (124, 34658),

Gene: Saguaro_35 Start: 35199, Stop: 35576, Start Num: 48

Candidate Starts for Saguaro_35:

(42, 35088), (Start: 48 @35199 has 1 MA's), (59, 35259), (61, 35265), (63, 35274), (90, 35394), (100, 35445), (113, 35514),

Gene: Samaymay_35 Start: 33958, Stop: 34344, Start Num: 49

Candidate Starts for Samaymay_35:

(40, 33817), (Start: 43 @33853 has 1 MA's), (Start: 49 @33958 has 281 MA's), (56, 33997), (64, 34033), (66, 34036), (87, 34144), (91, 34171), (105, 34243), (117, 34303),

Gene: SassyCat97_34 Start: 33664, Stop: 34050, Start Num: 49

Candidate Starts for SassyCat97_34:

(40, 33523), (Start: 43 @33559 has 1 MA's), (Start: 49 @33664 has 281 MA's), (56, 33703), (64, 33739), (66, 33742), (87, 33850), (91, 33877), (105, 33949), (117, 34009),

Gene: Schadenfreude_34 Start: 33515, Stop: 33901, Start Num: 49

Candidate Starts for Schadenfreude_34:

(40, 33374), (Start: 43 @33410 has 1 MA's), (Start: 49 @33515 has 281 MA's), (56, 33554), (64, 33590), (66, 33593), (87, 33701), (91, 33728), (105, 33800), (117, 33860),

Gene: Schueller_35 Start: 33680, Stop: 34066, Start Num: 49

Candidate Starts for Schueller_35:

(40, 33539), (Start: 43 @33575 has 1 MA's), (Start: 49 @33680 has 281 MA's), (56, 33719), (64, 33755), (66, 33758), (87, 33866), (91, 33893), (105, 33965), (117, 34025),

Gene: Scoot17C_35 Start: 33957, Stop: 34343, Start Num: 49

Candidate Starts for Scoot17C_35:

(40, 33816), (Start: 43 @33852 has 1 MA's), (Start: 49 @33957 has 281 MA's), (56, 33996), (64, 34032), (66, 34035), (87, 34143), (91, 34170), (105, 34242), (117, 34302),

Gene: Scrick_35 Start: 33682, Stop: 34068, Start Num: 49

Candidate Starts for Scrick_35:

(40, 33541), (Start: 43 @33577 has 1 MA's), (Start: 49 @33682 has 281 MA's), (56, 33721), (64, 33757), (66, 33760), (87, 33868), (91, 33895), (105, 33967), (117, 34027),

Gene: Sejanus_30 Start: 31273, Stop: 31701, Start Num: 49

Candidate Starts for Sejanus_30:

(Start: 43 @31168 has 1 MA's), (Start: 49 @31273 has 281 MA's), (95, 31564), (105, 31600),

Gene: Selr12_35 Start: 33685, Stop: 34071, Start Num: 49

Candidate Starts for Selr12_35:

(13, 33064), (18, 33148), (25, 33205), (28, 33214), (30, 33220), (40, 33544), (Start: 43 @33580 has 1 MA's), (Start: 49 @33685 has 281 MA's), (56, 33724), (64, 33760), (66, 33763), (87, 33871), (91, 33898), (105, 33970), (117, 34030),

Gene: Serendipitous_33 Start: 34367, Stop: 34795, Start Num: 50

Candidate Starts for Serendipitous_33:

(39, 34190), (Start: 43 @34262 has 1 MA's), (Start: 50 @34367 has 66 MA's), (57, 34415), (80, 34550), (83, 34565), (87, 34595), (90, 34616), (92, 34625), (116, 34754),

Gene: Serendipity_35 Start: 33982, Stop: 34368, Start Num: 49

Candidate Starts for Serendipity_35:

(40, 33841), (Start: 43 @33877 has 1 MA's), (Start: 49 @33982 has 281 MA's), (56, 34021), (64, 34057), (66, 34060), (87, 34168), (91, 34195), (105, 34267), (117, 34327),

Gene: Serpentine_0035 Start: 33963, Stop: 34349, Start Num: 49

Candidate Starts for Serpentine_0035:

(40, 33822), (Start: 43 @33858 has 1 MA's), (Start: 49 @33963 has 281 MA's), (56, 34002), (64, 34038), (66, 34041), (87, 34149), (91, 34176), (105, 34248), (117, 34308),

Gene: Sheila_35 Start: 34000, Stop: 34386, Start Num: 49

Candidate Starts for Sheila_35:

(40, 33859), (Start: 43 @33895 has 1 MA's), (Start: 49 @34000 has 281 MA's), (56, 34039), (64, 34075), (66, 34078), (87, 34186), (91, 34213), (105, 34285), (117, 34345),

Gene: ShiVal_35 Start: 33956, Stop: 34342, Start Num: 49

Candidate Starts for ShiVal_35:

(40, 33815), (Start: 43 @33851 has 1 MA's), (Start: 49 @33956 has 281 MA's), (56, 33995), (64, 34031), (66, 34034), (87, 34142), (91, 34169), (105, 34241), (117, 34301),

Gene: Sigman_35 Start: 33948, Stop: 34334, Start Num: 49

Candidate Starts for Sigman_35:

(40, 33807), (Start: 43 @33843 has 1 MA's), (Start: 49 @33948 has 281 MA's), (56, 33987), (64, 34023), (66, 34026), (87, 34134), (91, 34161), (105, 34233), (117, 34293),

Gene: Simielle_34 Start: 33651, Stop: 34037, Start Num: 49

Candidate Starts for Simielle_34:

(40, 33510), (Start: 43 @33546 has 1 MA's), (Start: 49 @33651 has 281 MA's), (56, 33690), (64, 33726), (66, 33729), (87, 33837), (91, 33864), (105, 33936), (117, 33996),

Gene: SirJeffery_34 Start: 34515, Stop: 34949, Start Num: 50

Candidate Starts for SirJeffery_34:

(39, 34338), (Start: 43 @34410 has 1 MA's), (Start: 50 @34515 has 66 MA's), (56, 34557), (57, 34569), (65, 34596), (78, 34692), (83, 34719), (87, 34749), (90, 34770), (92, 34779),

Gene: Skippy_35 Start: 33946, Stop: 34332, Start Num: 49

Candidate Starts for Skippy_35:

(40, 33805), (Start: 43 @33841 has 1 MA's), (Start: 49 @33946 has 281 MA's), (56, 33985), (64, 34021), (66, 34024), (87, 34132), (91, 34159), (105, 34231), (117, 34291),

Gene: Slatt_35 Start: 33972, Stop: 34358, Start Num: 49

Candidate Starts for Slatt_35:

(40, 33831), (Start: 43 @33867 has 1 MA's), (Start: 49 @33972 has 281 MA's), (56, 34011), (64, 34047), (66, 34050), (87, 34158), (91, 34185), (105, 34257), (117, 34317),

Gene: SlippinJimmy_35 Start: 34609, Stop: 35034, Start Num: 50

Candidate Starts for SlippinJimmy_35:

(Start: 43 @34504 has 1 MA's), (Start: 50 @34609 has 66 MA's), (67, 34687), (72, 34720), (74, 34729), (90, 34858), (93, 34894), (95, 34900), (101, 34912), (104, 34936), (111, 34954), (122, 35023),

Gene: Soile_35 Start: 33678, Stop: 34064, Start Num: 49

Candidate Starts for Soile_35:

(40, 33537), (Start: 43 @33573 has 1 MA's), (Start: 49 @33678 has 281 MA's), (56, 33717), (64, 33753), (66, 33756), (87, 33864), (91, 33891), (105, 33963), (117, 34023),

Gene: Solosis_34 Start: 33673, Stop: 34059, Start Num: 49

Candidate Starts for Solosis_34:

(40, 33532), (Start: 43 @33568 has 1 MA's), (Start: 49 @33673 has 281 MA's), (56, 33712), (64, 33748), (66, 33751), (87, 33859), (91, 33886), (105, 33958), (117, 34018),

Gene: Sophia_34 Start: 33673, Stop: 34059, Start Num: 49

Candidate Starts for Sophia_34:

(40, 33532), (Start: 43 @33568 has 1 MA's), (Start: 49 @33673 has 281 MA's), (56, 33712), (64, 33748), (66, 33751), (87, 33859), (91, 33886), (105, 33958), (117, 34018),

Gene: Soto_35 Start: 33966, Stop: 34352, Start Num: 49

Candidate Starts for Soto_35:

(40, 33825), (Start: 43 @33861 has 1 MA's), (Start: 49 @33966 has 281 MA's), (56, 34005), (64, 34041), (66, 34044), (87, 34152), (91, 34179), (105, 34251), (117, 34311),

Gene: Spartan300_35 Start: 33952, Stop: 34338, Start Num: 49

Candidate Starts for Spartan300_35:

(40, 33811), (Start: 43 @33847 has 1 MA's), (Start: 49 @33952 has 281 MA's), (56, 33991), (64, 34027), (66, 34030), (87, 34138), (91, 34165), (105, 34237), (117, 34297),

Gene: Squid_35 Start: 33664, Stop: 34050, Start Num: 49

Candidate Starts for Squid_35:

(40, 33523), (Start: 43 @33559 has 1 MA's), (Start: 49 @33664 has 281 MA's), (56, 33703), (64, 33739), (66, 33742), (87, 33850), (91, 33877), (105, 33949), (117, 34009),

Gene: Squiggle_35 Start: 33676, Stop: 34062, Start Num: 49

Candidate Starts for Squiggle_35:

(40, 33535), (Start: 43 @33571 has 1 MA's), (Start: 49 @33676 has 281 MA's), (56, 33715), (64, 33751), (66, 33754), (87, 33862), (91, 33889), (105, 33961), (117, 34021),

Gene: Stinger_30 Start: 32752, Stop: 33105, Start Num: 53

Candidate Starts for Stinger_30:

(Start: 53 @32752 has 22 MA's), (56, 32773), (61, 32800), (82, 32902), (92, 32938), (93, 32965), (109, 33019), (110, 33022), (121, 33085),

Gene: StinkyVeggy_36 Start: 34667, Stop: 35101, Start Num: 50

Candidate Starts for StinkyVeggy_36:

(39, 34484), (Start: 43 @34562 has 1 MA's), (Start: 50 @34667 has 66 MA's), (83, 34871), (87, 34901),

Gene: Struggle_34 Start: 33514, Stop: 33900, Start Num: 49

Candidate Starts for Struggle_34:

(40, 33373), (Start: 43 @33409 has 1 MA's), (Start: 49 @33514 has 281 MA's), (56, 33553), (64, 33589), (66, 33592), (87, 33700), (91, 33727), (105, 33799), (117, 33859),

Gene: Suffolk_35 Start: 33963, Stop: 34349, Start Num: 49

Candidate Starts for Suffolk_35:

(40, 33822), (Start: 43 @33858 has 1 MA's), (Start: 49 @33963 has 281 MA's), (56, 34002), (64, 34038), (66, 34041), (87, 34149), (91, 34176), (105, 34248), (117, 34308),

Gene: Suigeneris_34 Start: 34518, Stop: 34952, Start Num: 50

Candidate Starts for Suigeneris_34:

(39, 34341), (Start: 43 @34413 has 1 MA's), (Start: 50 @34518 has 66 MA's), (56, 34560), (57, 34572), (65, 34599), (78, 34695), (83, 34722), (90, 34773), (92, 34782),

Gene: Surely_35 Start: 33966, Stop: 34352, Start Num: 49

Candidate Starts for Surely_35:

(40, 33825), (Start: 43 @33861 has 1 MA's), (Start: 49 @33966 has 281 MA's), (56, 34005), (64, 34041), (66, 34044), (87, 34152), (91, 34179), (105, 34251), (117, 34311),

Gene: Swiphy_36 Start: 33961, Stop: 34347, Start Num: 49

Candidate Starts for Swiphy_36:

(40, 33820), (Start: 43 @33856 has 1 MA's), (Start: 49 @33961 has 281 MA's), (56, 34000), (64, 34036), (66, 34039), (87, 34147), (91, 34174), (105, 34246), (117, 34306),

Gene: Swish_35 Start: 33949, Stop: 34335, Start Num: 49

Candidate Starts for Swish_35:

(40, 33808), (Start: 43 @33844 has 1 MA's), (Start: 49 @33949 has 281 MA's), (56, 33988), (64, 34024), (66, 34027), (87, 34135), (91, 34162), (105, 34234), (117, 34294),

Gene: SynergyX_35 Start: 33844, Stop: 34269, Start Num: 50

Candidate Starts for SynergyX_35:

(Start: 43 @33739 has 1 MA's), (Start: 50 @33844 has 66 MA's), (67, 33922), (72, 33955), (74, 33964), (87, 34072), (90, 34093), (93, 34129), (95, 34135), (101, 34147), (104, 34171), (111, 34189), (122, 34258),

Gene: TA17A_35 Start: 34270, Stop: 34659, Start Num: 49

Candidate Starts for TA17A_35:

(40, 34129), (Start: 43 @34165 has 1 MA's), (Start: 49 @34270 has 281 MA's), (56, 34309), (87, 34456), (91, 34483), (95, 34519), (105, 34555), (107, 34558), (117, 34615), (124, 34648),

Gene: TallGrassMM_35 Start: 33588, Stop: 33974, Start Num: 49

Candidate Starts for TallGrassMM_35:

(40, 33447), (Start: 43 @33483 has 1 MA's), (Start: 49 @33588 has 281 MA's), (56, 33627), (64, 33663), (66, 33666), (87, 33774), (91, 33801), (105, 33873), (117, 33933),

Gene: Taptic_27 Start: 30948, Stop: 31370, Start Num: 50

Candidate Starts for Taptic_27:

(Start: 50 @30948 has 66 MA's), (56, 30978), (69, 31038), (74, 31065), (85, 31158), (87, 31173), (90, 31194), (93, 31230), (94, 31233), (95, 31236), (103, 31260),

Gene: Telesworld_34 Start: 33661, Stop: 34047, Start Num: 49

Candidate Starts for Telesworld_34:

(40, 33520), (Start: 43 @33556 has 1 MA's), (Start: 49 @33661 has 281 MA's), (56, 33700), (64, 33736), (66, 33739), (87, 33847), (91, 33874), (105, 33946), (117, 34006),

Gene: Thonko_33 Start: 31502, Stop: 31870, Start Num: 50

Candidate Starts for Thonko_33:

(Start: 43 @31394 has 1 MA's), (Start: 50 @31502 has 66 MA's), (62, 31571), (68, 31580), (70, 31598), (96, 31736), (109, 31784), (113, 31814), (121, 31850),

Gene: Thora_35 Start: 33965, Stop: 34351, Start Num: 49

Candidate Starts for Thora_35:

(40, 33824), (Start: 43 @33860 has 1 MA's), (Start: 49 @33965 has 281 MA's), (56, 34004), (64, 34040), (66, 34043), (87, 34151), (91, 34178), (105, 34250), (117, 34310),

Gene: ThreeOh3D2_35 Start: 33963, Stop: 34349, Start Num: 49

Candidate Starts for ThreeOh3D2_35:

(40, 33822), (Start: 43 @33858 has 1 MA's), (Start: 49 @33963 has 281 MA's), (56, 34002), (64, 34038), (66, 34041), (87, 34149), (91, 34176), (105, 34248), (117, 34308),

Gene: Timmi_34 Start: 33674, Stop: 34060, Start Num: 49

Candidate Starts for Timmi_34:

(40, 33533), (Start: 43 @33569 has 1 MA's), (Start: 49 @33674 has 281 MA's), (56, 33713), (64, 33749), (66, 33752), (87, 33860), (91, 33887), (105, 33959), (117, 34019),

Gene: Tinciduntolum_36 Start: 34408, Stop: 34797, Start Num: 49

Candidate Starts for Tinciduntolum_36:

(40, 34267), (Start: 43 @34303 has 1 MA's), (Start: 49 @34408 has 281 MA's), (56, 34447), (64, 34483), (78, 34558), (87, 34594), (91, 34621), (95, 34657), (105, 34693), (107, 34696), (117, 34753), (124, 34786),

Gene: TomBombadil_35 Start: 33959, Stop: 34345, Start Num: 49

Candidate Starts for TomBombadil_35:

(40, 33818), (Start: 43 @33854 has 1 MA's), (Start: 49 @33959 has 281 MA's), (56, 33998), (64, 34034), (66, 34037), (87, 34145), (91, 34172), (105, 34244), (117, 34304),

Gene: Tomlarah_35 Start: 33950, Stop: 34336, Start Num: 49

Candidate Starts for Tomlarah_35:

(40, 33809), (Start: 43 @33845 has 1 MA's), (Start: 49 @33950 has 281 MA's), (56, 33989), (64, 34025), (66, 34028), (87, 34136), (91, 34163), (105, 34235), (117, 34295),

Gene: Toni_34 Start: 33666, Stop: 34052, Start Num: 49

Candidate Starts for Toni_34:

(40, 33525), (Start: 43 @33561 has 1 MA's), (Start: 49 @33666 has 281 MA's), (56, 33705), (64, 33741), (66, 33744), (87, 33852), (91, 33879), (105, 33951), (117, 34011),

Gene: Tooj_35 Start: 34023, Stop: 34409, Start Num: 49

Candidate Starts for Tooj_35:

(40, 33882), (Start: 43 @33918 has 1 MA's), (Start: 49 @34023 has 281 MA's), (56, 34062), (64, 34098), (66, 34101), (87, 34209), (91, 34236), (105, 34308), (117, 34368),

Gene: Tres_35 Start: 34283, Stop: 34672, Start Num: 49

Candidate Starts for Tres_35:

(40, 34142), (Start: 43 @34178 has 1 MA's), (Start: 49 @34283 has 281 MA's), (56, 34322), (64, 34358), (78, 34433), (87, 34469), (91, 34496), (95, 34532), (105, 34568), (107, 34571), (117, 34628), (124, 34661),

Gene: True_34 Start: 33663, Stop: 34049, Start Num: 49

Candidate Starts for True_34:

(40, 33522), (Start: 43 @33558 has 1 MA's), (Start: 49 @33663 has 281 MA's), (56, 33702), (64, 33738), (66, 33741), (87, 33849), (91, 33876), (105, 33948), (117, 34008),

Gene: Trypo_35 Start: 33959, Stop: 34345, Start Num: 49

Candidate Starts for Trypo_35:

(40, 33818), (Start: 43 @33854 has 1 MA's), (Start: 49 @33959 has 281 MA's), (56, 33998), (64, 34034), (66, 34037), (87, 34145), (91, 34172), (105, 34244), (117, 34304),

Gene: Tydolla_35 Start: 34578, Stop: 35003, Start Num: 50

Candidate Starts for Tydolla_35:

(Start: 43 @34473 has 1 MA's), (Start: 50 @34578 has 66 MA's), (67, 34656), (72, 34689), (74, 34698), (87, 34806), (90, 34827), (93, 34863), (95, 34869), (101, 34881), (104, 34905), (111, 34923), (122, 34992),

Gene: TyrionL_34 Start: 33522, Stop: 33908, Start Num: 49

Candidate Starts for TyrionL_34:

(40, 33381), (Start: 43 @33417 has 1 MA's), (Start: 49 @33522 has 281 MA's), (56, 33561), (64, 33597), (66, 33600), (87, 33708), (91, 33735), (105, 33807), (117, 33867),

Gene: UAch1_35 Start: 33972, Stop: 34358, Start Num: 49

Candidate Starts for UAch1_35:

(40, 33831), (Start: 43 @33867 has 1 MA's), (Start: 49 @33972 has 281 MA's), (56, 34011), (64, 34047), (66, 34050), (87, 34158), (91, 34185), (105, 34257), (117, 34317),

Gene: UncleHowie_35 Start: 33662, Stop: 34048, Start Num: 49

Candidate Starts for UncleHowie_35:

(40, 33521), (Start: 43 @33557 has 1 MA's), (Start: 49 @33662 has 281 MA's), (56, 33701), (64, 33737), (66, 33740), (87, 33848), (91, 33875), (105, 33947), (117, 34007),

Gene: Usavi_35 Start: 33963, Stop: 34349, Start Num: 49

Candidate Starts for Usavi_35:

(40, 33822), (Start: 43 @33858 has 1 MA's), (Start: 49 @33963 has 281 MA's), (56, 34002), (64, 34038), (66, 34041), (87, 34149), (91, 34176), (105, 34248), (117, 34308),

Gene: Vaishali24_34 Start: 33624, Stop: 34010, Start Num: 49

Candidate Starts for Vaishali24_34:

(40, 33483), (Start: 43 @33519 has 1 MA's), (Start: 49 @33624 has 281 MA's), (56, 33663), (64, 33699), (66, 33702), (87, 33810), (91, 33837), (105, 33909), (117, 33969),

Gene: Valjean_35 Start: 33955, Stop: 34341, Start Num: 49

Candidate Starts for Valjean_35:

(40, 33814), (Start: 43 @33850 has 1 MA's), (Start: 49 @33955 has 281 MA's), (56, 33994), (64, 34030), (66, 34033), (87, 34141), (91, 34168), (105, 34240), (117, 34300),

Gene: Vaticameos_35 Start: 33653, Stop: 34039, Start Num: 49

Candidate Starts for Vaticameos_35:

(40, 33512), (Start: 43 @33548 has 1 MA's), (Start: 49 @33653 has 281 MA's), (56, 33692), (64, 33728), (66, 33731), (87, 33839), (91, 33866), (105, 33938), (117, 33998),

Gene: Veritas_34 Start: 33525, Stop: 33911, Start Num: 49

Candidate Starts for Veritas_34:

(40, 33384), (Start: 43 @33420 has 1 MA's), (Start: 49 @33525 has 281 MA's), (56, 33564), (64, 33600), (66, 33603), (87, 33711), (91, 33738), (105, 33810), (117, 33870),

Gene: Vincenzo_33 Start: 34896, Stop: 35249, Start Num: 53

Candidate Starts for Vincenzo_33:

(Start: 53 @34896 has 22 MA's), (56, 34917), (61, 34944), (82, 35046), (92, 35082), (93, 35109), (109, 35163), (121, 35229),

Gene: VioletZ_32 Start: 34247, Stop: 34600, Start Num: 53

Candidate Starts for VioletZ_32:

(Start: 53 @34247 has 22 MA's), (56, 34268), (61, 34295), (82, 34397), (92, 34433), (109, 34514), (110, 34517), (121, 34580),

Gene: Virapocalypse_35 Start: 33950, Stop: 34336, Start Num: 49

Candidate Starts for Virapocalypse_35:

(40, 33809), (Start: 43 @33845 has 1 MA's), (Start: 49 @33950 has 281 MA's), (56, 33989), (64, 34025), (66, 34028), (87, 34136), (91, 34163), (105, 34235), (117, 34295),

Gene: Virgeve_34 Start: 33730, Stop: 34116, Start Num: 49

Candidate Starts for Virgeve_34:

(40, 33589), (Start: 43 @33625 has 1 MA's), (Start: 49 @33730 has 281 MA's), (56, 33769), (64, 33805), (66, 33808), (87, 33916), (91, 33943), (105, 34015), (117, 34075),

Gene: Vista_35 Start: 33963, Stop: 34349, Start Num: 49

Candidate Starts for Vista_35:

(40, 33822), (Start: 43 @33858 has 1 MA's), (Start: 49 @33963 has 281 MA's), (56, 34002), (64, 34038), (66, 34041), (87, 34149), (91, 34176), (105, 34248), (117, 34308),

Gene: Vivaldi_35 Start: 33992, Stop: 34378, Start Num: 49

Candidate Starts for Vivaldi_35:

(40, 33851), (Start: 43 @33887 has 1 MA's), (Start: 49 @33992 has 281 MA's), (56, 34031), (64, 34067), (66, 34070), (87, 34178), (91, 34205), (105, 34277), (117, 34337),

Gene: Vortex_35 Start: 33669, Stop: 34055, Start Num: 49

Candidate Starts for Vortex_35:

(40, 33528), (Start: 43 @33564 has 1 MA's), (Start: 49 @33669 has 281 MA's), (56, 33708), (64, 33744), (66, 33747), (87, 33855), (91, 33882), (105, 33954), (117, 34014),

Gene: Waleliano_32 Start: 34174, Stop: 34527, Start Num: 53

Candidate Starts for Waleliano_32:

(Start: 53 @34174 has 22 MA's), (56, 34195), (61, 34222), (82, 34324), (92, 34360), (109, 34441), (110, 34444), (121, 34507),

Gene: Wallhey_34 Start: 33526, Stop: 33912, Start Num: 49

Candidate Starts for Wallhey_34:

(40, 33385), (Start: 43 @33421 has 1 MA's), (Start: 49 @33526 has 281 MA's), (56, 33565), (64, 33601), (66, 33604), (87, 33712), (91, 33739), (105, 33811), (117, 33871),

Gene: Waterdiva_35 Start: 33955, Stop: 34341, Start Num: 49

Candidate Starts for Waterdiva_35:

(40, 33814), (Start: 43 @33850 has 1 MA's), (Start: 49 @33955 has 281 MA's), (56, 33994), (64, 34030), (66, 34033), (87, 34141), (91, 34168), (105, 34240), (117, 34300),

Gene: Weher20_35 Start: 33954, Stop: 34340, Start Num: 49

Candidate Starts for Weher20_35:

(40, 33813), (Start: 43 @33849 has 1 MA's), (Start: 49 @33954 has 281 MA's), (56, 33993), (64, 34029), (66, 34032), (87, 34140), (91, 34167), (105, 34239), (117, 34299),

Gene: West99_35 Start: 34403, Stop: 34792, Start Num: 49

Candidate Starts for West99_35:

(40, 34262), (Start: 43 @34298 has 1 MA's), (Start: 49 @34403 has 281 MA's), (56, 34442), (64, 34478), (78, 34553), (87, 34589), (91, 34616), (95, 34652), (105, 34688), (107, 34691), (117, 34748), (124, 34781),

Gene: Windsor_34 Start: 33659, Stop: 34045, Start Num: 49

Candidate Starts for Windsor_34:

(40, 33518), (Start: 43 @33554 has 1 MA's), (Start: 49 @33659 has 281 MA's), (56, 33698), (64, 33734), (66, 33737), (87, 33845), (91, 33872), (105, 33944), (117, 34004),

Gene: Xavier_34 Start: 33676, Stop: 34062, Start Num: 49

Candidate Starts for Xavier_34:

(40, 33535), (Start: 43 @33571 has 1 MA's), (Start: 49 @33676 has 281 MA's), (56, 33715), (64, 33751), (66, 33754), (87, 33862), (91, 33889), (105, 33961), (117, 34021),

Gene: Yahalom_35 Start: 33854, Stop: 34279, Start Num: 50

Candidate Starts for Yahalom_35:

(35, 33512), (37, 33623), (Start: 43 @33749 has 1 MA's), (Start: 50 @33854 has 66 MA's), (72, 33965), (74, 33974), (76, 33989), (90, 34103), (92, 34112), (93, 34139), (95, 34145), (101, 34157), (104, 34181), (111, 34199), (122, 34268),

Gene: Yinz_35 Start: 33880, Stop: 34305, Start Num: 50

Candidate Starts for Yinz_35:

(Start: 43 @33775 has 1 MA's), (Start: 50 @33880 has 66 MA's), (67, 33958), (72, 33991), (74, 34000), (87, 34108), (90, 34129), (92, 34138), (93, 34165), (95, 34171), (101, 34183), (104, 34207), (111, 34225), (122, 34294),

Gene: Yoshand_35 Start: 33962, Stop: 34348, Start Num: 49

Candidate Starts for Yoshand_35:

(40, 33821), (Start: 43 @33857 has 1 MA's), (Start: 49 @33962 has 281 MA's), (56, 34001), (64, 34037), (66, 34040), (87, 34148), (91, 34175), (105, 34247), (117, 34307),

Gene: YouGoGlencoco_35 Start: 33957, Stop: 34343, Start Num: 49

Candidate Starts for YouGoGlencoco_35:

(40, 33816), (Start: 43 @33852 has 1 MA's), (Start: 49 @33957 has 281 MA's), (56, 33996), (64, 34032), (66, 34035), (87, 34143), (91, 34170), (105, 34242), (117, 34302),

Gene: Zaider_36 Start: 34187, Stop: 34573, Start Num: 49

Candidate Starts for Zaider_36:

(40, 34046), (Start: 43 @34082 has 1 MA's), (Start: 49 @34187 has 281 MA's), (56, 34226), (64, 34262), (66, 34265), (87, 34373), (91, 34400), (105, 34472), (117, 34532),

Gene: Zelda_35 Start: 34004, Stop: 34390, Start Num: 49

Candidate Starts for Zelda_35:

(40, 33863), (Start: 43 @33899 has 1 MA's), (Start: 49 @34004 has 281 MA's), (56, 34043), (64, 34079), (66, 34082), (87, 34190), (91, 34217), (105, 34289), (117, 34349),

Gene: Zemanar_33 Start: 34177, Stop: 34530, Start Num: 53

Candidate Starts for Zemanar_33:

(Start: 53 @34177 has 22 MA's), (56, 34198), (61, 34225), (82, 34327), (92, 34363), (109, 34444), (110, 34447), (121, 34510),

Gene: Zenteno07_38 Start: 33261, Stop: 33638, Start Num: 51

Candidate Starts for Zenteno07_38:

(36, 33021), (41, 33141), (44, 33189), (45, 33195), (Start: 48 @33252 has 1 MA's), (Start: 51 @33261 has 5 MA's), (63, 33330), (69, 33345), (118, 33594),

Gene: Zonia_35 Start: 33976, Stop: 34362, Start Num: 49

Candidate Starts for Zonia_35:

(40, 33835), (Start: 43 @33871 has 1 MA's), (Start: 49 @33976 has 281 MA's), (56, 34015), (64, 34051), (66, 34054), (87, 34162), (91, 34189), (105, 34261), (117, 34321),