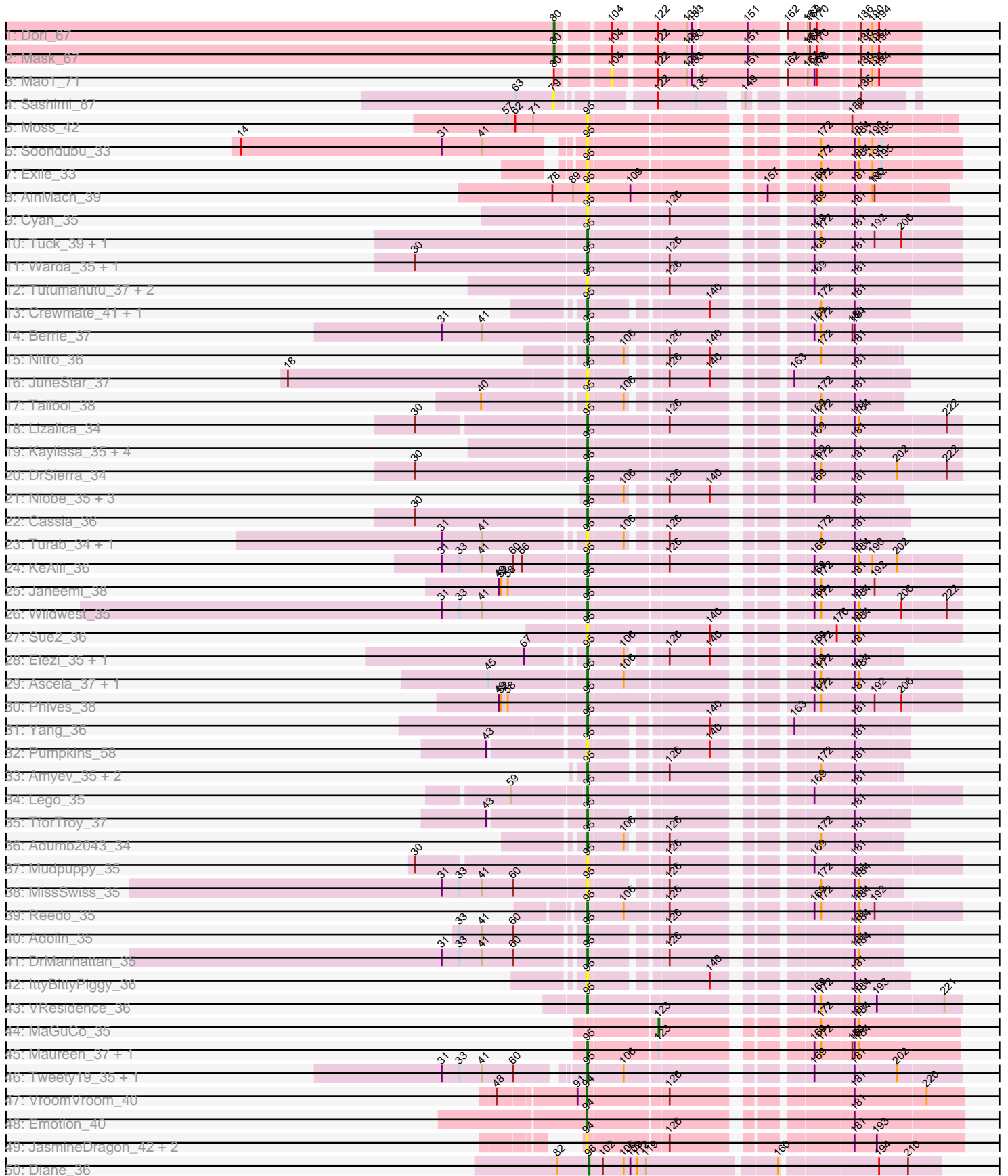
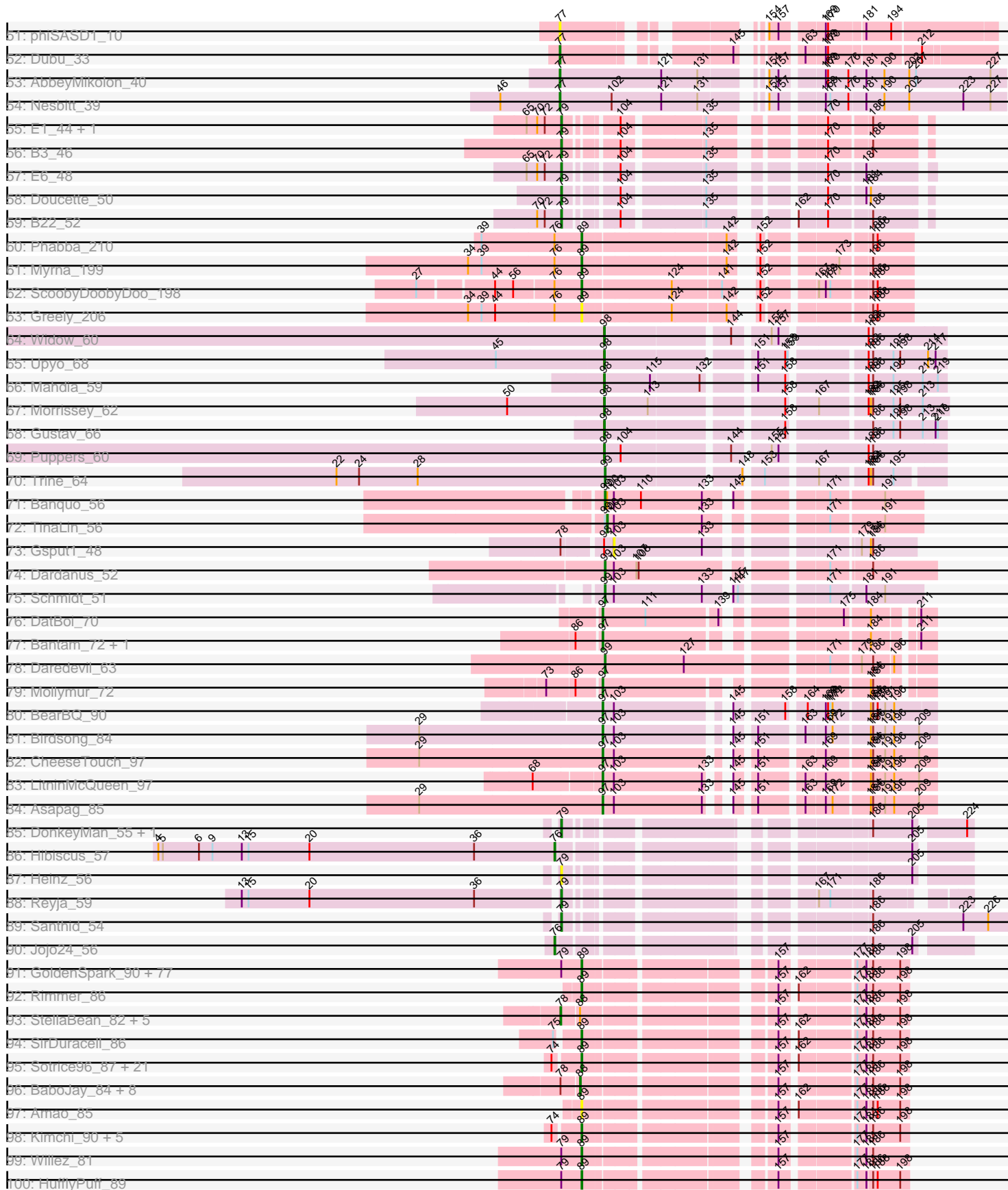


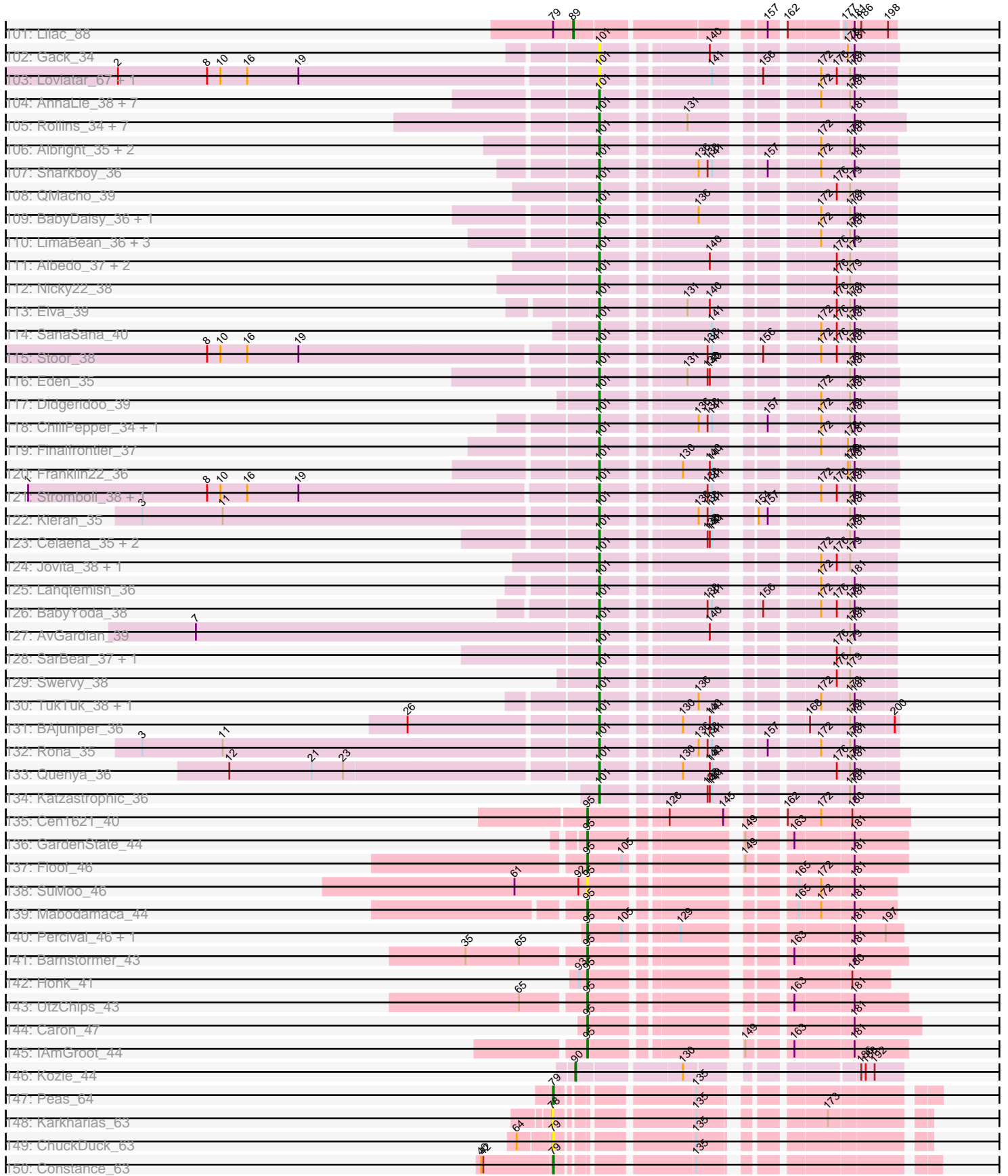
Pham 157494



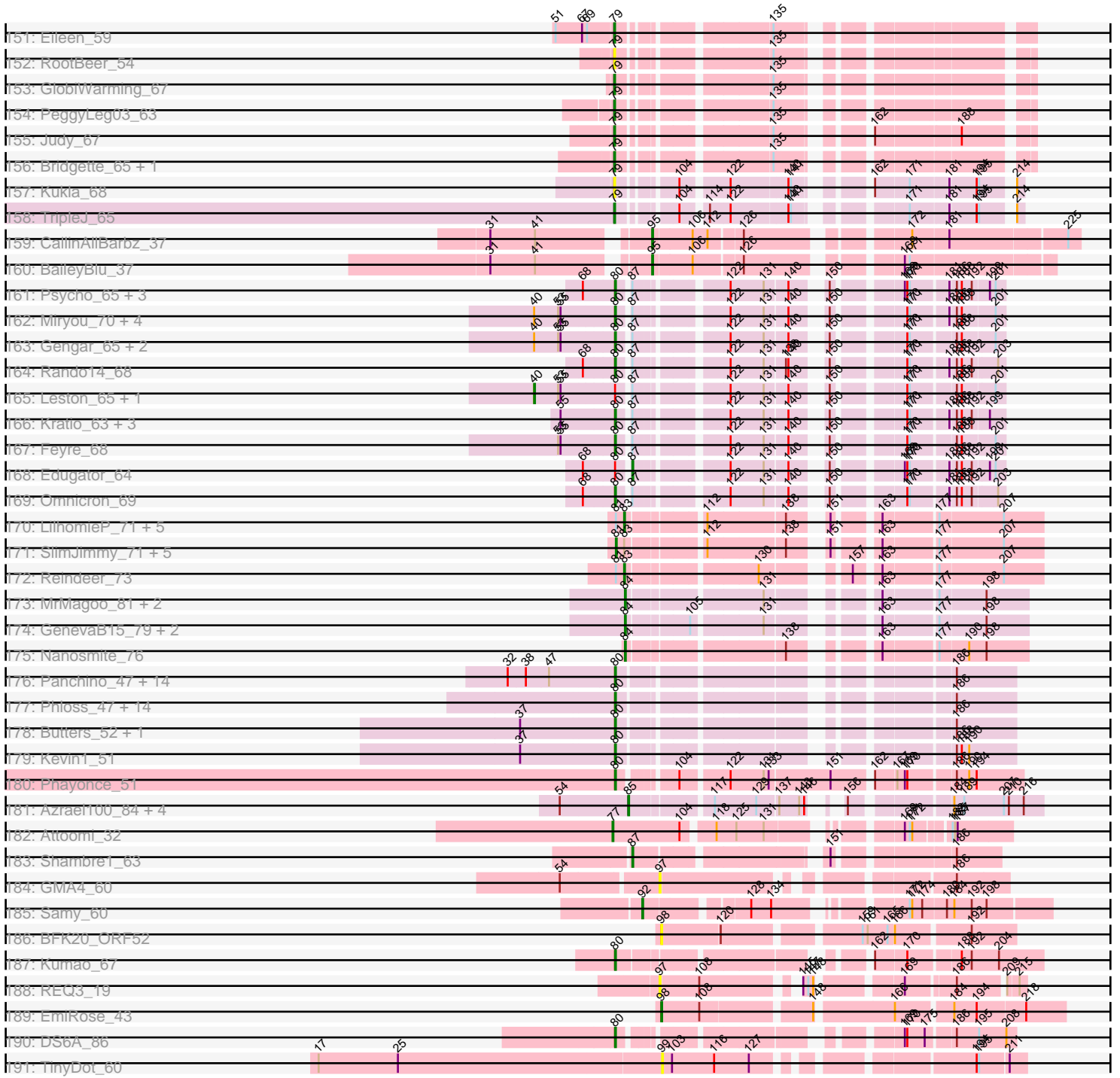
Pham 157494



Pham 157494



Pham 157494



Note: Tracks are now grouped by subcluster and scaled. Switching in subcluster is indicated by changes in track color. Track scale is now set by default to display the region 30 bp upstream of start 1 to 30 bp downstream of the last possible start. If this default region is judged to be packed too tightly with annotated starts, the track will be further scaled to only show that region of the ORF with annotated starts. This action will be indicated by adding "Zoomed" to the title. For starts, yellow indicates the location of called starts comprised solely of Glimmer/GeneMark auto-annotations, green indicates the location of called starts with at least 1 manual gene annotation.

Pham 157494 Report

This analysis was run 04/13/24 on database version 558.

Pham number 157494 has 423 members, 63 are drafts.

Phages represented in each track:

- Track 1 : Dori_67
- Track 2 : Mask_67
- Track 3 : Mao1_71
- Track 4 : Sashimi_87
- Track 5 : Moss_42
- Track 6 : Soondubu_33
- Track 7 : Exile_33
- Track 8 : AinMach_39
- Track 9 : Cyan_35
- Track 10 : Tuck_39, Community_38
- Track 11 : Warda_35, Tbone_34
- Track 12 : Tutumahutu_37, Joemato_37, Simpson_37
- Track 13 : Crewmate_41, ObiToo_40
- Track 14 : Berrie_37
- Track 15 : Nitro_36
- Track 16 : JuneStar_37
- Track 17 : Tallboi_38
- Track 18 : Lizalica_34
- Track 19 : Kaylissa_35, AGrandiflora_36, YesChef_35, JohnDoe_35, Powerpuff_37
- Track 20 : DrSierra_34
- Track 21 : Niobe_35, Eraser_35, Jstan_37, Asa16_35
- Track 22 : Cassia_36
- Track 23 : Turab_34, AEgle_34
- Track 24 : KeAlii_36
- Track 25 : Janeemi_38
- Track 26 : Wildwest_35
- Track 27 : Sue2_36
- Track 28 : Elezi_35, London_35
- Track 29 : Ascela_37, Iter_37
- Track 30 : Phives_38
- Track 31 : Yang_36
- Track 32 : Pumpkins_58
- Track 33 : Amyev_35, Tian_35, Pixelle_36
- Track 34 : Lego_35
- Track 35 : TforTroy_37
- Track 36 : Adumb2043_34
- Track 37 : Mudpuppy_35

- Track 38 : MissSwiss_35
- Track 39 : Reedo_35
- Track 40 : Adolin_35
- Track 41 : DrManhattan_35
- Track 42 : IttyBittyPiggy_36
- Track 43 : VResidence_36
- Track 44 : MaGuCo_35
- Track 45 : Maureen_37, Liebe_37
- Track 46 : Tweety19_35, Snek_35
- Track 47 : VroomVroom_40
- Track 48 : Emotion_40
- Track 49 : JasmineDragon_42, ShakeltOph_42, MiniMommy_42
- Track 50 : Diane_36
- Track 51 : phiSASD1_10
- Track 52 : Dubu_33
- Track 53 : AbbeyMikolon_40
- Track 54 : Nesbitt_39
- Track 55 : E1_44, Anatole_44
- Track 56 : B3_46
- Track 57 : E6_48
- Track 58 : Doucette_50
- Track 59 : B22_52
- Track 60 : Phabba_210
- Track 61 : Myrna_199
- Track 62 : ScoobyDoobyDoo_198
- Track 63 : Greely_206
- Track 64 : Widow_60
- Track 65 : Upyo_68
- Track 66 : Mahdia_59
- Track 67 : Morrissey_62
- Track 68 : Gustav_66
- Track 69 : Puppies_60
- Track 70 : Trine_64
- Track 71 : Banquo_56
- Track 72 : TinaLin_56
- Track 73 : Gspu1_48
- Track 74 : Dardanus_52
- Track 75 : Schmidt_51
- Track 76 : DatBoi_70
- Track 77 : Bantam_72, SpeedDemon_740
- Track 78 : Daredevil_63
- Track 79 : Mollymur_72
- Track 80 : BearBQ_90
- Track 81 : Birdsong_84
- Track 82 : CheeseTouch_97
- Track 83 : LitninMcQueen_97
- Track 84 : Asapag_85
- Track 85 : DonkeyMan_55, Tarzan_57
- Track 86 : Hibiscus_57
- Track 87 : Heinz_56
- Track 88 : Reyja_59
- Track 89 : Santhid_54
- Track 90 : Jojo24_56

- Track 91 : GoldenSpark_90, Lilizi_87, Emmina_86, NelitzaMV_84, Holt_91, Pharsalus_83, TeardropMSU_82, Kostya_86, Contagion_82, Gemini_91, Bruin_83, Maxxinista_88, Bench_89, Murica_89, FireRed_90, Lilpickle_85, Misfit_87, Pumpkin_89, Terminus_89, Phaja_84, Goku_85, Cjw1_86, Dusk_83, Buck_87, BadStone_83, Elph10_86, DrDrey_86, Xandras_85, MadamMonkfish_86, xkcd_89, Miniwave_81, JeTaime_86, IHOP_84, MPhalcon_87, Filch_87, Porky_85, Tarkin_85, ShereKhan_84, Czyszczo1_87, Hopey_86, Mosby_82, MISSy_87, TBrady12_89, Petra64142_90, Quallification_87, GooberAzure_89, AmericanBeauty_93, Simpliphy_85, Stark_87, RiverMonster_86, Sassay_81, Elite2014_85, Eureka_85, Kanye_83, Argent26_90, Murphy_86, Phaux_88, PhatBacter_90, HanKaySha_86, Tuco_87, Highbury_85, Thresher_88, Ukulele_81, Command613_88, ChosenOne_86, Marshmallow_84, Youngblood_89, Saints25_85, Tomaszewski_81, Nimrod_87, Stank_90, SophKB_83, Paperbeatsrock_85, NoSleep_87, Nala_88, OrionPax_85, ABCat_83, Dumbo_86
- Track 92 : Rimmer_86
- Track 93 : StellaBean_82, Toto_84, BilboSwaggins_85, Easy2Say_87, Mindy_85, Teaspoon_83
- Track 94 : SirDuracell_86
- Track 95 : Sotrice96_87, Bask21_86, Moldemort_89, Flypotenuse_82, DoctorDiddles_85, ChotaBhai_86, Harella_86, Cookies_83, Cactus_89, Daikon_88, Asriel_85, Pat3_84, Icee_87, Balomoji_86, Hoonter_89, Barbarian_85, Glexan_85, BigBubba_86, Adnama_90, Traaww1_82, Gator_84, Wiggin_88
- Track 96 : BaboJay_84, Manda_88, 244_87, Inca_83, Phrux_83, CrystalP_85, YassJohnny_83, ShamWow_86, Henry_84
- Track 97 : Amao_85
- Track 98 : Kimchi_90, Rakim_87, Myrale_86, StolenFromERC_89, Goldilocks_89, Gage_88
- Track 99 : Willez_81
- Track 100 : HuffyPuff_89
- Track 101 : Lilac_88
- Track 102 : Gack_34
- Track 103 : Loviatar_67, Icarian_42
- Track 104 : AnnaLie_38, Burritobowl_37, Arroyo_38, IndyLu_36, BelmontSKP_38, CroZenni_37, Johnathan_36, DickRichards_36
- Track 105 : Rollins_34, Skylord_34, Vitas_34, Brahms_34, Bernstein_34, Armstrong_34, Coltrane_34, Clayda5_35
- Track 106 : Albright_35, Doobus_36, Avocadoman_36
- Track 107 : Sharkboy_36
- Track 108 : QMacho_39
- Track 109 : BabyDaisy_36, Cashington_35
- Track 110 : LimaBean_36, Abigail_36, BubbaBear_36, SansAfet_38
- Track 111 : Albedo_37, Kenzers_37, Lynlen_37
- Track 112 : Nicky22_38
- Track 113 : Elva_39
- Track 114 : SanaSana_40
- Track 115 : Stoor_38
- Track 116 : Eden_35
- Track 117 : Didgeridoo_39
- Track 118 : ChiliPepper_34, Dismas_35
- Track 119 : Finalfrontier_37
- Track 120 : Franklin22_36
- Track 121 : Stromboli_38, DirtyBubble_37
- Track 122 : Kieran_35

- Track 123 : Celaena_35, Bachaco_36, FlameThrower_35
- Track 124 : Jovita_38, Eula_38
- Track 125 : Lahqtemish_36
- Track 126 : BabyYoda_38
- Track 127 : AvGardian_39
- Track 128 : SarBear_37, Slay_38
- Track 129 : Swervy_38
- Track 130 : TukTuk_38, Phisb_40
- Track 131 : BAjuniper_36
- Track 132 : Rona_35
- Track 133 : Quenya_36
- Track 134 : Katzastrophic_36
- Track 135 : Cen1621_40
- Track 136 : GardenState_44
- Track 137 : Floof_46
- Track 138 : SuMoo_46
- Track 139 : Mabodamaca_44
- Track 140 : Percival_46, Gretchen_45
- Track 141 : Barnstormer_43
- Track 142 : Honk_41
- Track 143 : UtzChips_43
- Track 144 : Caron_47
- Track 145 : IAmGroot_44
- Track 146 : Kozie_44
- Track 147 : Peas_64
- Track 148 : Karkharias_63
- Track 149 : ChuckDuck_63
- Track 150 : Constance_63
- Track 151 : Eileen_59
- Track 152 : RootBeer_54
- Track 153 : GlobiWarming_67
- Track 154 : PeggyLeg03_63
- Track 155 : Judy_67
- Track 156 : Bridgette_65, Pucara_59
- Track 157 : Kukla_68
- Track 158 : TripleJ_65
- Track 159 : CallinAllBarbz_37
- Track 160 : BaileyBlu_37
- Track 161 : Psycho_65, Dadosky_67, AlleyCat_67, Larva_66
- Track 162 : Miryou_70, SoSeph_66, Heftyboy_66, Thyatira_68, Waterfoul_67
- Track 163 : Gengar_65, Paola_65, OkiRoe_66
- Track 164 : Rando14_68
- Track 165 : Leston_65, Guillsminger_66
- Track 166 : Kratio_63, Collard_63, Agent47_63, InvictusManeo_63
- Track 167 : Feyre_68
- Track 168 : Edugator_64
- Track 169 : Omnicron_69
- Track 170 : LilhomieP_71, Bongo_71, PegLeg_70, Auspice_71, Bricole_70, IPhane7_71
- Track 171 : SlimJimmy_71, Dulcita_72, Glaske16_73, Diminimus_72, TyDawg_71, Skinny_74
- Track 172 : Reindeer_73
- Track 173 : MrMagoo_81, GardenSalsa_80, Rey_78

- Track 174 : GenevaB15_79, Estes_80, Aziz_78
- Track 175 : Nanosmite_76
- Track 176 : Panchino_47, BabeRuth_55, ShrimpFriedEgg_54, Jamie19_48, Redi_54, PhancyPhin_54, SpongeBob_48, Charlie_50, Bosection6_50, Phrann_51, Nenae_54, Purgamenstris_54, Raymond7_48, Andies_47, Snekmaggedon_48
- Track 177 : Phloss_47, Pipsqueaks_49, Smurph_49, Schnauzer_50, Carcharodon_49, Parmesanjohn_49, Melville_53, Fulbright_48, Xerxes_49, Silvafighter_50, Chewbacca_51, Magsby_49, Duplicity_49, Gex_49, Tapioca_51
- Track 178 : Butters_52, Rubeelu_52
- Track 179 : Kevin1_51
- Track 180 : Phayonce_51
- Track 181 : Azrael100_84, Wildcat_85, MaryV_85, EniyanLRS_81, Cosmo_85
- Track 182 : Attoomi_32
- Track 183 : Shambre1_63
- Track 184 : GMA4_60
- Track 185 : Samy_60
- Track 186 : BFK20_ORF52
- Track 187 : Kumao_67
- Track 188 : REQ3_19
- Track 189 : EmiRose_43
- Track 190 : DS6A_86
- Track 191 : TinyDot_60

Summary of Final Annotations (See graph section above for start numbers):

The start number called the most often in the published annotations is 89, it was called in 107 of the 360 non-draft genes in the pham.

Genes that call this "Most Annotated" start:

- ABCat_83, Adnama_90, Amao_85, AmericanBeauty_93, Argent26_90, Asriel_85, BadStone_83, Balomoji_86, Barbarian_85, Bask21_86, Bench_89, BigBubba_86, Bruin_83, Buck_87, Cactus_89, ChosenOne_86, ChotaBhai_86, Cjw1_86, Command613_88, Contagion_82, Cookies_83, Czyszczonek1_87, Daikon_88, DoctorDiddles_85, DrDrey_86, Dumbo_86, Dusk_83, Elite2014_85, Elph10_86, Emmina_86, Eureka_85, Filch_87, FireRed_90, Flypotenuse_82, Gage_88, Gator_84, Gemini_91, Glexan_85, Goku_85, GoldenSpark_90, Goldilocks_89, GooberAzure_89, Greely_206, HanKaySha_86, Harella_86, Highbury_85, Holt_91, Hoonter_89, Hopey_86, HufflyPuff_89, IHOP_84, Icee_87, JeTaime_86, Kanye_83, Kimchi_90, Kostya_86, Lilac_88, Lilizi_87, Lilpickle_85, MISSy_87, MPhalcon_87, MadamMonkfish_86, Marshmallow_84, Maxxinista_88, Miniwave_81, Misfit_87, Moldemort_89, Mosby_82, Murica_89, Murphy_86, Myrale_86, Myrna_199, Nala_88, NelitzaMV_84, Nimrod_87, NoSleep_87, OrionPax_85, Paperbeatsrock_85, Pat3_84, Petra64142_90, Phabba_210, Phaja_84, Pharsalus_83, PhatBacter_90, Phaux_88, Porky_85, Pumpkin_89, Quallification_87, Rakim_87, Rimmer_86, RiverMonster_86, Saints25_85, Sassay_81, ScoobyDoobyDoo_198, ShereKhan_84, Simpliphy_85, SirDuracell_86, SophKB_83, Sotrice96_87, Stank_90, Stark_87, StolenFromERC_89, TBrady12_89, Tarkin_85, TeardropMSU_82, Terminus_89, Thresher_88, Tomaszewski_81, Traaww1_82, Tuco_87, Ukulele_81, Wiggin_88, Willez_81, Xandras_85, Youngblood_89, xkcd_89,

Genes that have the "Most Annotated" start but do not call it:

- AinMach_39,

Genes that do not have the "Most Annotated" start:

- 244_87, AEgle_34, AGrandiflora_36, AbbeyMikolon_40, Abigail_36, Adolin_35, Adumb2043_34, Agent47_63, Albedo_37, Albright_35, AlleyCat_67, Amyev_35, Anatole_44, Andies_47, AnnaLie_38, Armstrong_34, Arroyo_38, Asa16_35, Asapag_85, Ascela_37, Attoomi_32, Auspice_71, AvGuardian_39, Avocadoman_36, Aziz_78, Azrael100_84, B22_52, B3_46, BAjuniper_36, BFK20_ORF52, BabeRuth_55, BaboJay_84, BabyDaisy_36, BabyYoda_38, Bachaco_36, BaileyBlu_37, Banquo_56, Bantam_72, Barnstormer_43, BearBQ_90, BelmontSKP_38, Bernstein_34, Berrie_37, BilboSwaggins_85, Birdsong_84, Bongo_71, Bosection6_50, Brahms_34, Bricole_70, Bridgette_65, BubbaBear_36, Burritobowl_37, Butters_52, CallinAllBarbz_37, Carcharodon_49, Caron_47, Cashington_35, Cassia_36, Celaena_35, Cen1621_40, Charlie_50, CheeseTouch_97, Chewbacca_51, ChiliPepper_34, ChuckDuck_63, Clayda5_35, Collard_63, Coltrane_34, Community_38, Constance_63, Cosmo_85, Crewmate_41, CroZenni_37, CrystalP_85, Cyan_35, DS6A_86, Dadosky_67, Dardanus_52, Daredevil_63, DatBoi_70, Diane_36, DickRichards_36, Didgeridoo_39, Diminimus_72, DirtyBubble_37, Dismas_35, DonkeyMan_55, Doobus_36, Dori_67, Doucette_50, DrManhattan_35, DrSierra_34, Dubu_33, Dulcita_72, Duplicity_49, E1_44, E6_48, Easy2Say_87, Eden_35, Edugator_64, Eileen_59, Elezi_35, Elva_39, EmiRose_43, Emotion_40, EniyanLRS_81, Eraser_35, Estes_80, Eula_38, Exile_33, Feyre_68, Finalfrontier_37, FlameThrower_35, Floof_46, Franklin22_36, Fulbright_48, GMA4_60, Gack_34, GardenSalsa_80, GardenState_44, GenevaB15_79, Gengar_65, Gex_49, Glaske16_73, GlobiWarming_67, Gretchen_45, Gspu1_48, Guillsminger_66, Gustav_66, Heftyboy_66, Heinz_56, Henry_84, Hibiscus_57, Honk_41, IAmGroot_44, IPhane7_71, Icarian_42, Inca_83, IndyLu_36, InvictusManeo_63, Iter_37, IttyBittyPiggy_36, Jamie19_48, Janeemi_38, JasmineDragon_42, Joemato_37, JohnDoe_35, Johnathan_36, Jojo24_56, Jovita_38, Jstan_37, Judy_67, JuneStar_37, Karkharias_63, Katzastrophic_36, Kaylissa_35, KeAii_36, Kenzers_37, Kevin1_51, Kieran_35, Kozi_44, Kratio_63, Kukla_68, Kumao_67, Lahqtemish_36, Larva_66, Lego_35, Leston_65, Liebe_37, LilhomieP_71, LimaBean_36, LitninMcQueen_97, Lizalica_34, London_35, Loviatar_67, Lynlen_37, MaGuCo_35, Mabodamaca_44, Magsby_49, Mahdia_59, Manda_88, Mao1_71, MaryV_85, Mask_67, Maureen_37, Melville_53, Mindy_85, MiniMommy_42, Miryou_70, MissSwiss_35, Mollymur_72, Morrissey_62, Moss_42, MrMagoo_81, Mudpuppy_35, Nanosmite_76, Nenae_54, Nesbitt_39, Nicky22_38, Niobe_35, Nitro_36, ObiToo_40, OkiRoe_66, Omnicron_69, Panchino_47, Paola_65, Parmesanjohn_49, Peas_64, PegLeg_70, PeggyLeg03_63, Percival_46, PhancyPhin_54, Phayonce_51, Phisb_40, Phives_38, Phloss_47, Phrann_51, Phrux_83, Pipsqueaks_49, Pixelle_36, Powerpuff_37, Psycho_65, Pucara_59, Pumpkins_58, Puppies_60, Purgamenstris_54, QMacho_39, Quenya_36, REQ3_19, Rando14_68, Raymond7_48, Redi_54, Reedo_35, Reindeer_73, Rey_78, Reyja_59, Rollins_34, Rona_35, RootBeer_54, Rubeelu_52, Samy_60, SanaSana_40, SansAfet_38, Santhid_54, SarBear_37, Sashimi_87, Schmidt_51, Schnauzer_50, ShakeltOph_42, ShamWow_86, Shambre1_63, Sharkboy_36, ShrimpFriedEgg_54, Silvafighter_50, Simpson_37, Skinny_74, Skylord_34, Slay_38, SlimJimmy_71, Smurph_49, Snek_35, SnekMaggedon_48, SoSeph_66, Soondubu_33, SpeedDemon_740, SpongeBob_48, StellaBean_82, Stoor_38, Stromboli_38, SuMoo_46, Sue2_36, Swervy_38, Tallboi_38, Tapioca_51, Tarzan_57, Tbone_34, Teaspoon_83, TforTroy_37, Thyatira_68, Tian_35, TinaLin_56, TinyDot_60, Toto_84, Trine_64, TripleJ_65, Tuck_39, TukTuk_38, Turab_34, Tutumahutu_37,

Tweety19_35, TyDawg_71, Upyo_68, UtzChips_43, VResidence_36, Vitas_34, VroomVroom_40, Warda_35, Waterfoul_67, Widow_60, Wildcat_85, Wildwest_35, Xerxes_49, Yang_36, YassJohnny_83, YesChef_35, phiSASD1_10,

Summary by start number:

Start 40:

- Found in 12 of 423 (2.8%) of genes in pham
- Manual Annotations of this start: 2 of 360
- Called 16.7% of time when present
- Phage (with cluster) where this start called: Guillsminger_66 (K5), Leston_65 (K5),

Start 76:

- Found in 6 of 423 (1.4%) of genes in pham
- Manual Annotations of this start: 2 of 360
- Called 33.3% of time when present
- Phage (with cluster) where this start called: Hibiscus_57 (DY), Jojo24_56 (DY),

Start 77:

- Found in 5 of 423 (1.2%) of genes in pham
- Manual Annotations of this start: 4 of 360
- Called 100.0% of time when present
- Phage (with cluster) where this start called: AbbeyMikolon_40 (BL), Attoomi_32 (singleton), Dubu_33 (BJ), Nesbitt_39 (BL), phiSASD1_10 (BJ),

Start 78:

- Found in 18 of 423 (4.3%) of genes in pham
- Manual Annotations of this start: 3 of 360
- Called 38.9% of time when present
- Phage (with cluster) where this start called: BilboSwaggins_85 (E), Easy2Say_87 (E), Karkharias_63 (FA), Mindy_85 (E), StellaBean_82 (E), Teaspoon_83 (E), Toto_84 (E),

Start 79:

- Found in 105 of 423 (24.8%) of genes in pham
- Manual Annotations of this start: 17 of 360
- Called 22.9% of time when present
- Phage (with cluster) where this start called: Anatole_44 (BV), B22_52 (BW), B3_46 (BV), Bridgette_65 (FA), ChuckDuck_63 (FA), Constance_63 (FA), DonkeyMan_55 (DY), Doucette_50 (BW), E1_44 (BV), E6_48 (BW), Eileen_59 (FA), GlobiWarming_67 (FA), Heinz_56 (DY), Judy_67 (FA), Kukla_68 (FJ), Peas_64 (FA), PeggyLeg03_63 (FA), Pucara_59 (FA), Reyja_59 (DY), RootBeer_54 (FA), Santhid_54 (DY), Sashimi_87 (AY), Tarzan_57 (DY), TripleJ_65 (FJ),

Start 80:

- Found in 61 of 423 (14.4%) of genes in pham
- Manual Annotations of this start: 53 of 360
- Called 93.4% of time when present
- Phage (with cluster) where this start called: Agent47_63 (K5), AlleyCat_67 (K5), Andies_47 (N), BabeRuth_55 (N), Bosection6_50 (N), Butters_52 (N), Carcharodon_49 (N), Charlie_50 (N), Chewbacca_51 (N), Collard_63 (K5), DS6A_86 (singleton), Dadosky_67 (K5), Dori_67 (AD), Duplicity_49 (N), Feyre_68 (K5), Fulbright_48 (N), Gengar_65 (K5), Gex_49 (N), Heftyboy_66 (K5), InvictusManeo_63

(K5), Jamie19_48 (N), Kevin1_51 (N), Kratio_63 (K5), Kumao_67 (singleton), Larva_66 (K5), Magsby_49 (N), Mask_67 (AD), Melville_53 (N), Miryou_70 (K5), Nенаe_54 (N), OkiRoe_66 (K5), Omnicron_69 (K5), Panchino_47 (N), Paola_65 (K5), Parmesanjohn_49 (N), PhancyPhin_54 (N), Phayonce_51 (P5), Phloss_47 (N), Phrann_51 (N), Pipsqueaks_49 (N), Psycho_65 (K5), Purgamenstris_54 (N), Rando14_68 (K5), Raymond7_48 (N), Redi_54 (N), Rubeelu_52 (N), Schnauzer_50 (N), ShrimpFriedEgg_54 (N), Silvafighter_50 (N), Smurph_49 (N), Snekmaggedon_48 (N), SoSeph_66 (K5), SpongeBob_48 (N), Tapioca_51 (N), Thyatira_68 (K5), Waterfoul_67 (K5), Xerxes_49 (N),

Start 81:

- Found in 13 of 423 (3.1%) of genes in pham
- Manual Annotations of this start: 6 of 360
- Called 46.2% of time when present
- Phage (with cluster) where this start called: Diminimus_72 (M1), Dulcita_72 (M1), Glaske16_73 (M1), Skinny_74 (M1), SlimJimmy_71 (M1), TyDawg_71 (M1),

Start 83:

- Found in 13 of 423 (3.1%) of genes in pham
- Manual Annotations of this start: 7 of 360
- Called 53.8% of time when present
- Phage (with cluster) where this start called: Auspice_71 (M1), Bongo_71 (M1), Bricole_70 (M1), IPhane7_71 (M1), LilhomieP_71 (M1), PegLeg_70 (M1), Reindeer_73 (M1),

Start 84:

- Found in 7 of 423 (1.7%) of genes in pham
- Manual Annotations of this start: 7 of 360
- Called 100.0% of time when present
- Phage (with cluster) where this start called: Aziz_78 (M2), Estes_80 (M2), GardenSalsa_80 (M2), GenevaB15_79 (M2), MrMagoo_81 (M2), Nanosmite_76 (M3), Rey_78 (M2),

Start 85:

- Found in 5 of 423 (1.2%) of genes in pham
- Manual Annotations of this start: 5 of 360
- Called 100.0% of time when present
- Phage (with cluster) where this start called: Azrael100_84 (V), Cosmo_85 (V), EniyanLRS_81 (V), MaryV_85 (V), Wildcat_85 (V),

Start 87:

- Found in 23 of 423 (5.4%) of genes in pham
- Manual Annotations of this start: 2 of 360
- Called 8.7% of time when present
- Phage (with cluster) where this start called: Edugator_64 (K5), Shambre1_63 (singleton),

Start 88:

- Found in 15 of 423 (3.5%) of genes in pham
- Manual Annotations of this start: 9 of 360
- Called 60.0% of time when present
- Phage (with cluster) where this start called: 244_87 (E), BaboJay_84 (E), CrystalP_85 (E), Henry_84 (E), Inca_83 (E), Manda_88 (E), Phrux_83 (E),

ShamWow_86 (E), YassJohnny_83 (E),

Start 89:

- Found in 117 of 423 (27.7%) of genes in pham
- Manual Annotations of this start: 107 of 360
- Called 99.1% of time when present
- Phage (with cluster) where this start called: ABCat_83 (E), Adnama_90 (E), Amao_85 (E), AmericanBeauty_93 (E), Argent26_90 (E), Asriel_85 (E), BadStone_83 (E), Balomoji_86 (E), Barbarian_85 (E), Bask21_86 (E), Bench_89 (E), BigBubba_86 (E), Bruin_83 (E), Buck_87 (E), Cactus_89 (E), ChosenOne_86 (E), ChotaBhai_86 (E), Cjw1_86 (E), Command613_88 (E), Contagion_82 (E), Cookies_83 (E), Czystczon1_87 (E), Daikon_88 (E), DoctorDiddles_85 (E), DrDrey_86 (E), Dumbo_86 (E), Dusk_83 (E), Elite2014_85 (E), Elph10_86 (E), Emmina_86 (E), Eureka_85 (E), Filch_87 (E), FireRed_90 (E), Flypotenuse_82 (E), Gage_88 (E), Gator_84 (E), Gemini_91 (E), Glexan_85 (E), Goku_85 (E), GoldenSpark_90 (E), Goldilocks_89 (E), GooberAzure_89 (E), Greely_206 (C2), HanKaySha_86 (E), Harella_86 (E), Highbury_85 (E), Holt_91 (E), Hoonter_89 (E), Hopey_86 (E), HufflyPuff_89 (E), IHOP_84 (E), Icee_87 (E), JeTaime_86 (E), Kanye_83 (E), Kimchi_90 (E), Kostya_86 (E), Lilac_88 (E), Lilizi_87 (E), Lilpickle_85 (E), MISSy_87 (E), MPhalcon_87 (E), MadamMonkfish_86 (E), Marshmallow_84 (E), Maxxinista_88 (E), Miniwave_81 (E), Misfit_87 (E), Moldemort_89 (E), Mosby_82 (E), Murica_89 (E), Murphy_86 (E), Myrale_86 (E), Myrna_199 (C2), Nala_88 (E), NelitzaMV_84 (E), Nimrod_87 (E), NoSleep_87 (E), OrionPax_85 (E), Paperbeatsrock_85 (E), Pat3_84 (E), Petra64142_90 (E), Phabba_210 (C2), Phaja_84 (E), Pharsalus_83 (E), PhatBacter_90 (E), Phaux_88 (E), Porky_85 (E), Pumpkin_89 (E), Qualification_87 (E), Rakim_87 (E), Rimmer_86 (E), RiverMonster_86 (E), Saints25_85 (E), Sassay_81 (E), ScoobyDoobyDoo_198 (C2), ShereKhan_84 (E), Simpliphy_85 (E), SirDuracell_86 (E), SophKB_83 (E), Sotrice96_87 (E), Stank_90 (E), Stark_87 (E), StolenFromERC_89 (E), TBrady12_89 (E), Tarkin_85 (E), TeardropMSU_82 (E), Terminus_89 (E), Thresher_88 (E), Tomaszewski_81 (E), Traaww1_82 (E), Tuco_87 (E), Ukulele_81 (E), Wiggin_88 (E), Willez_81 (E), Xandras_85 (E), Youngblood_89 (E), xkcd_89 (E),

Start 90:

- Found in 1 of 423 (0.2%) of genes in pham
- Manual Annotations of this start: 1 of 360
- Called 100.0% of time when present
- Phage (with cluster) where this start called: Kozie_44 (EI),

Start 92:

- Found in 2 of 423 (0.5%) of genes in pham
- Manual Annotations of this start: 1 of 360
- Called 50.0% of time when present
- Phage (with cluster) where this start called: Samy_60 (singleton),

Start 94:

- Found in 5 of 423 (1.2%) of genes in pham
- Manual Annotations of this start: 2 of 360
- Called 100.0% of time when present
- Phage (with cluster) where this start called: Emotion_40 (AZ4), JasmineDragon_42 (AZ4), MiniMommy_42 (AZ4), ShakeltOph_42 (AZ4), VroomVroom_40 (AZ4),

Start 95:

- Found in 74 of 423 (17.5%) of genes in pham
- Manual Annotations of this start: 51 of 360
- Called 100.0% of time when present
- Phage (with cluster) where this start called: AEgle_34 (AZ1), AGrandiflora_36 (AZ1), Adolin_35 (AZ1), Adumb2043_34 (AZ1), AinMach_39 (AZ), Amyev_35 (AZ1), Asa16_35 (AZ1), Ascela_37 (AZ1), BaileyBlu_37 (FP), Barnstormer_43 (EH), Berrie_37 (AZ1), CallinAllBarbz_37 (FP), Caron_47 (EH), Cassia_36 (AZ1), Cen1621_40 (EH), Community_38 (AZ1), Crewmate_41 (AZ1), Cyan_35 (AZ1), DrManhattan_35 (AZ1), DrSierra_34 (AZ1), Elezi_35 (AZ1), Eraser_35 (AZ1), Exile_33 (AZ), Floof_46 (EH), GardenState_44 (EH), Gretchen_45 (EH), Honk_41 (EH), IAmGroot_44 (EH), Iter_37 (AZ1), IttyBittyPiggy_36 (AZ1), Janeemi_38 (AZ1), Joemato_37 (AZ1), JohnDoe_35 (AZ1), Jstan_37 (AZ1), JuneStar_37 (AZ1), Kaylissa_35 (AZ1), KeAlii_36 (AZ1), Lego_35 (AZ1), Liebe_37 (AZ2), Lizalica_34 (AZ1), London_35 (AZ1), Mabodamaca_44 (EH), Maureen_37 (AZ2), MissSwiss_35 (AZ1), Moss_42 (AZ), Mudpuppy_35 (AZ1), Niobe_35 (AZ1), Nitro_36 (AZ1), ObiToo_40 (AZ1), Percival_46 (EH), Phives_38 (AZ1), Pixelle_36 (AZ1), Powerpuff_37 (AZ1), Pumpkins_58 (AZ1), Reedo_35 (AZ1), Simpson_37 (AZ1), Sneak_35 (AZ3), Soondubu_33 (AZ), SuMoo_46 (EH), Sue2_36 (AZ1), Tallboi_38 (AZ1), Tbone_34 (AZ1), TforTroy_37 (AZ1), Tian_35 (AZ1), Tuck_39 (AZ1), Turab_34 (AZ1), Tutumahutu_37 (AZ1), Tweety19_35 (AZ3), UtzChips_43 (EH), VResidence_36 (AZ1), Warda_35 (AZ1), Wildwest_35 (AZ1), Yang_36 (AZ1), YesChef_35 (AZ1),

Start 96:

- Found in 1 of 423 (0.2%) of genes in pham
- Manual Annotations of this start: 1 of 360
- Called 100.0% of time when present
- Phage (with cluster) where this start called: Diane_36 (BD2),

Start 97:

- Found in 11 of 423 (2.6%) of genes in pham
- Manual Annotations of this start: 9 of 360
- Called 100.0% of time when present
- Phage (with cluster) where this start called: Asapag_85 (DN1), Bantam_72 (DL), BearBQ_90 (DN), Birdsong_84 (DN), CheeseTouch_97 (DN1), DatBoi_70 (DL), GMA4_60 (singleton), LitninMcQueen_97 (DN1), Mollymur_72 (DL), REQ3_19 (singleton), SpeedDemon_740 (DL),

Start 98:

- Found in 9 of 423 (2.1%) of genes in pham
- Manual Annotations of this start: 7 of 360
- Called 88.9% of time when present
- Phage (with cluster) where this start called: BFK20_ORF52 (singleton), EmiRose_43 (singleton), Gustav_66 (CD), Mahdia_59 (CD), Morrissey_62 (CD), Puppies_60 (CD), Upyo_68 (CD), Widow_60 (CD),

Start 99:

- Found in 7 of 423 (1.7%) of genes in pham
- Manual Annotations of this start: 5 of 360
- Called 85.7% of time when present
- Phage (with cluster) where this start called: Banquo_56 (CU1), Dardanus_52 (CU3), Daredevil_63 (DL), Schmidt_51 (CU4), TinyDot_60 (singleton), Trine_64 (CD),

Start 100:

- Found in 2 of 423 (0.5%) of genes in pham
- Manual Annotations of this start: 1 of 360
- Called 50.0% of time when present
- Phage (with cluster) where this start called: TinaLin_56 (CU1),

Start 101:

- Found in 63 of 423 (14.9%) of genes in pham
- Manual Annotations of this start: 57 of 360
- Called 100.0% of time when present
- Phage (with cluster) where this start called: Abigail_36 (EB), Albedo_37 (EB), Albright_35 (EB), AnnaLie_38 (EB), Armstrong_34 (EB), Arroyo_38 (EB), AvGardian_39 (EB), Avocadoman_36 (EB), BAjuniper_36 (EB), BabyDaisy_36 (EB), BabyYoda_38 (EB), Bachaco_36 (EB), BelmontSKP_38 (EB), Bernstein_34 (EB), Brahms_34 (EB), BubbaBear_36 (EB), Burritobowl_37 (EB), Cashington_35 (EB), Celaena_35 (EB), ChiliPepper_34 (EB), Clayda5_35 (EB), Coltrane_34 (EB), CroZenni_37 (EB), DickRichards_36 (EB), Didgeridoo_39 (EB), DirtyBubble_37 (EB), Dismas_35 (EB), Doobus_36 (EB), Eden_35 (EB), Elva_39 (EB), Eula_38 (EB), Finalfrontier_37 (EB), FlameThrower_35 (EB), Franklin22_36 (EB), Gack_34 (EB), Icarian_42 (EB), IndyLu_36 (EB), Johnathan_36 (EB), Jovita_38 (EB), Katzastrophic_36 (EB), Kenzers_37 (EB), Kieran_35 (EB), Lahqtemish_36 (EB), LimaBean_36 (EB), Loviatar_67 (EB), Lynlen_37 (EB), Nicky22_38 (EB), Phisb_40 (EB), QMacho_39 (EB), Quenya_36 (EB), Rollins_34 (EB), Rona_35 (EB), SanaSana_40 (EB), SansAfet_38 (EB), SarBear_37 (EB), Sharkboy_36 (EB), Skylord_34 (EB), Slay_38 (EB), Stoor_38 (EB), Stromboli_38 (EB), Swervy_38 (EB), TukTuk_38 (EB), Vitas_34 (EB),

Start 103:

- Found in 11 of 423 (2.6%) of genes in pham
- No Manual Annotations of this start.
- Called 9.1% of time when present
- Phage (with cluster) where this start called: Gspu1_48 (CU2),

Start 104:

- Found in 14 of 423 (3.3%) of genes in pham
- No Manual Annotations of this start.
- Called 7.1% of time when present
- Phage (with cluster) where this start called: Mao1_71 (AD),

Start 123:

- Found in 3 of 423 (0.7%) of genes in pham
- Manual Annotations of this start: 1 of 360
- Called 33.3% of time when present
- Phage (with cluster) where this start called: MaGuCo_35 (AZ2),

Summary by clusters:

There are 37 clusters represented in this pham: DN, FP, DL, M3, BL, M2, singleton, BJ, FA, BV, BW, M1, K5, DY, EI, FJ, AD, CU4, CU3, CU2, CU1, DN1, BD2, C2, E, EH, P5, EB, V, AY, N, AZ, CD, AZ1, AZ2, AZ3, AZ4,

Info for manual annotations of cluster AD:

- Start number 80 was manually annotated 2 times for cluster AD.

Info for manual annotations of cluster AZ1:

- Start number 95 was manually annotated 34 times for cluster AZ1.

Info for manual annotations of cluster AZ2:

- Start number 95 was manually annotated 2 times for cluster AZ2.
- Start number 123 was manually annotated 1 time for cluster AZ2.

Info for manual annotations of cluster AZ3:

- Start number 95 was manually annotated 2 times for cluster AZ3.

Info for manual annotations of cluster AZ4:

- Start number 94 was manually annotated 2 times for cluster AZ4.

Info for manual annotations of cluster BD2:

- Start number 96 was manually annotated 1 time for cluster BD2.

Info for manual annotations of cluster BJ:

- Start number 77 was manually annotated 1 time for cluster BJ.

Info for manual annotations of cluster BL:

- Start number 77 was manually annotated 2 times for cluster BL.

Info for manual annotations of cluster BV:

- Start number 79 was manually annotated 3 times for cluster BV.

Info for manual annotations of cluster BW:

- Start number 79 was manually annotated 3 times for cluster BW.

Info for manual annotations of cluster C2:

- Start number 89 was manually annotated 3 times for cluster C2.

Info for manual annotations of cluster CD:

- Start number 98 was manually annotated 6 times for cluster CD.
- Start number 99 was manually annotated 1 time for cluster CD.

Info for manual annotations of cluster CU1:

- Start number 99 was manually annotated 1 time for cluster CU1.
- Start number 100 was manually annotated 1 time for cluster CU1.

Info for manual annotations of cluster CU3:

- Start number 99 was manually annotated 1 time for cluster CU3.

Info for manual annotations of cluster CU4:

- Start number 99 was manually annotated 1 time for cluster CU4.

Info for manual annotations of cluster DL:

- Start number 97 was manually annotated 4 times for cluster DL.
- Start number 99 was manually annotated 1 time for cluster DL.

Info for manual annotations of cluster DN:

- Start number 97 was manually annotated 2 times for cluster DN.

Info for manual annotations of cluster DN1:

- Start number 97 was manually annotated 3 times for cluster DN1.

Info for manual annotations of cluster DY:

- Start number 76 was manually annotated 2 times for cluster DY.
- Start number 79 was manually annotated 3 times for cluster DY.

Info for manual annotations of cluster E:

- Start number 78 was manually annotated 3 times for cluster E.
- Start number 88 was manually annotated 9 times for cluster E.
- Start number 89 was manually annotated 104 times for cluster E.

Info for manual annotations of cluster EB:

- Start number 101 was manually annotated 57 times for cluster EB.

Info for manual annotations of cluster EH:

- Start number 95 was manually annotated 11 times for cluster EH.

Info for manual annotations of cluster EI:

- Start number 90 was manually annotated 1 time for cluster EI.

Info for manual annotations of cluster FA:

- Start number 79 was manually annotated 7 times for cluster FA.

Info for manual annotations of cluster FJ:

- Start number 79 was manually annotated 1 time for cluster FJ.

Info for manual annotations of cluster FP:

- Start number 95 was manually annotated 2 times for cluster FP.

Info for manual annotations of cluster K5:

- Start number 40 was manually annotated 2 times for cluster K5.
- Start number 80 was manually annotated 17 times for cluster K5.
- Start number 87 was manually annotated 1 time for cluster K5.

Info for manual annotations of cluster M1:

- Start number 81 was manually annotated 6 times for cluster M1.
- Start number 83 was manually annotated 7 times for cluster M1.

Info for manual annotations of cluster M2:

- Start number 84 was manually annotated 6 times for cluster M2.

Info for manual annotations of cluster M3:

- Start number 84 was manually annotated 1 time for cluster M3.

Info for manual annotations of cluster N:

- Start number 80 was manually annotated 31 times for cluster N.

Info for manual annotations of cluster P5:

- Start number 80 was manually annotated 1 time for cluster P5.

Info for manual annotations of cluster V:

•Start number 85 was manually annotated 5 times for cluster V.

Gene Information:

Gene: 244_87 Start: 52340, Stop: 52702, Start Num: 88

Candidate Starts for 244_87:

(Start: 78 @52319 has 3 MA's), (Start: 88 @52340 has 9 MA's), (157, 52553), (177, 52637), (181, 52649), (186, 52655), (198, 52691),

Gene: ABCat_83 Start: 52732, Stop: 53094, Start Num: 89

Candidate Starts for ABCat_83:

(Start: 79 @52705 has 17 MA's), (Start: 89 @52732 has 107 MA's), (157, 52945), (177, 53029), (181, 53041), (186, 53047), (198, 53083),

Gene: AEgle_34 Start: 25272, Stop: 25622, Start Num: 95

Candidate Starts for AEgle_34:

(31, 25092), (41, 25146), (Start: 95 @25272 has 51 MA's), (106, 25317), (126, 25356), (172, 25518), (181, 25560),

Gene: AGrandiflora_36 Start: 25133, Stop: 25576, Start Num: 95

Candidate Starts for AGrandiflora_36:

(Start: 95 @25133 has 51 MA's), (169, 25385), (181, 25436),

Gene: AbbeyMikolon_40 Start: 26256, Stop: 26795, Start Num: 77

Candidate Starts for AbbeyMikolon_40:

(Start: 77 @26256 has 4 MA's), (121, 26391), (131, 26439), (154, 26499), (157, 26511), (169, 26559), (170, 26562), (176, 26589), (181, 26610), (190, 26634), (202, 26667), (207, 26676), (227, 26775),

Gene: Abigail_36 Start: 25222, Stop: 25548, Start Num: 101

Candidate Starts for Abigail_36:

(Start: 101 @25222 has 57 MA's), (172, 25453), (179, 25489), (181, 25495),

Gene: Adnama_90 Start: 52618, Stop: 52980, Start Num: 89

Candidate Starts for Adnama_90:

(74, 52585), (Start: 89 @52618 has 107 MA's), (157, 52831), (162, 52846), (177, 52915), (181, 52927), (186, 52933), (198, 52969),

Gene: Adolin_35 Start: 24126, Stop: 24476, Start Num: 95

Candidate Starts for Adolin_35:

(33, 23973), (41, 24003), (60, 24045), (Start: 95 @24126 has 51 MA's), (126, 24210), (181, 24414), (184, 24420),

Gene: Adumb2043_34 Start: 25291, Stop: 25641, Start Num: 95

Candidate Starts for Adumb2043_34:

(Start: 95 @25291 has 51 MA's), (106, 25336), (126, 25375), (172, 25537), (181, 25579),

Gene: Agent47_63 Start: 45856, Stop: 46221, Start Num: 80

Candidate Starts for Agent47_63:

(55, 45793), (Start: 80 @45856 has 53 MA's), (Start: 87 @45868 has 2 MA's), (122, 45958), (131, 45997), (140, 46021), (150, 46048), (170, 46117), (171, 46120), (181, 46162), (186, 46168), (188, 46174), (192, 46186), (199, 46204),

Gene: AinMach_39 Start: 26488, Stop: 26916, Start Num: 95

Candidate Starts for AinMach_39:

(Start: 78 @26443 has 3 MA's), (Start: 89 @26470 has 107 MA's), (Start: 95 @26488 has 51 MA's), (109, 26545), (157, 26695), (169, 26743), (172, 26752), (181, 26794), (190, 26818), (192, 26821),

Gene: Albedo_37 Start: 25772, Stop: 26098, Start Num: 101

Candidate Starts for Albedo_37:

(Start: 101 @25772 has 57 MA's), (140, 25895), (176, 26024), (179, 26039),

Gene: Albright_35 Start: 24924, Stop: 25250, Start Num: 101

Candidate Starts for Albright_35:

(Start: 101 @24924 has 57 MA's), (172, 25155), (179, 25191), (181, 25197),

Gene: AlleyCat_67 Start: 46184, Stop: 46549, Start Num: 80

Candidate Starts for AlleyCat_67:

(68, 46148), (Start: 80 @46184 has 53 MA's), (Start: 87 @46196 has 2 MA's), (122, 46286), (131, 46325), (140, 46349), (150, 46376), (169, 46442), (170, 46445), (171, 46448), (181, 46490), (186, 46496), (188, 46502), (192, 46514), (199, 46532), (201, 46538),

Gene: Amao_85 Start: 51813, Stop: 52175, Start Num: 89

Candidate Starts for Amao_85:

(Start: 89 @51813 has 107 MA's), (157, 52026), (162, 52041), (177, 52110), (181, 52122), (186, 52128), (188, 52134), (198, 52164),

Gene: AmericanBeauty_93 Start: 52901, Stop: 53263, Start Num: 89

Candidate Starts for AmericanBeauty_93:

(Start: 79 @52874 has 17 MA's), (Start: 89 @52901 has 107 MA's), (157, 53114), (177, 53198), (181, 53210), (186, 53216), (198, 53252),

Gene: Amyev_35 Start: 26817, Stop: 27164, Start Num: 95

Candidate Starts for Amyev_35:

(Start: 95 @26817 has 51 MA's), (126, 26901), (172, 27063), (181, 27105),

Gene: Anatole_44 Start: 29853, Stop: 30233, Start Num: 79

Candidate Starts for Anatole_44:

(65, 29811), (70, 29823), (72, 29832), (Start: 79 @29853 has 17 MA's), (104, 29907), (135, 30003), (170, 30117), (186, 30168),

Gene: Andies_47 Start: 34063, Stop: 34455, Start Num: 80

Candidate Starts for Andies_47:

(32, 33940), (38, 33961), (47, 33988), (Start: 80 @34063 has 53 MA's), (186, 34384),

Gene: AnnaLie_38 Start: 26045, Stop: 26371, Start Num: 101

Candidate Starts for AnnaLie_38:

(Start: 101 @26045 has 57 MA's), (172, 26276), (179, 26312), (181, 26318),

Gene: Argent26_90 Start: 52539, Stop: 52901, Start Num: 89

Candidate Starts for Argent26_90:

(Start: 79 @52512 has 17 MA's), (Start: 89 @52539 has 107 MA's), (157, 52752), (177, 52836), (181, 52848), (186, 52854), (198, 52890),

Gene: Armstrong_34 Start: 23647, Stop: 23988, Start Num: 101
Candidate Starts for Armstrong_34:
(Start: 101 @23647 has 57 MA's), (131, 23740), (181, 23920),

Gene: Arroyo_38 Start: 26083, Stop: 26409, Start Num: 101
Candidate Starts for Arroyo_38:
(Start: 101 @26083 has 57 MA's), (172, 26314), (179, 26350), (181, 26356),

Gene: Asa16_35 Start: 26861, Stop: 27211, Start Num: 95
Candidate Starts for Asa16_35:
(Start: 95 @26861 has 51 MA's), (106, 26906), (126, 26945), (140, 26999), (169, 27098), (181, 27149),

Gene: Asapag_85 Start: 49353, Stop: 49730, Start Num: 97
Candidate Starts for Asapag_85:
(29, 49113), (Start: 97 @49353 has 9 MA's), (103, 49365), (133, 49482), (145, 49494), (151, 49515), (163, 49566), (169, 49590), (172, 49599), (184, 49644), (186, 49647), (191, 49662), (196, 49674), (209, 49707),

Gene: Ascela_37 Start: 25854, Stop: 26297, Start Num: 95
Candidate Starts for Ascela_37:
(45, 25725), (Start: 95 @25854 has 51 MA's), (106, 25899), (169, 26106), (172, 26115), (181, 26157), (184, 26163),

Gene: Asriel_85 Start: 50955, Stop: 51317, Start Num: 89
Candidate Starts for Asriel_85:
(74, 50922), (Start: 89 @50955 has 107 MA's), (157, 51168), (162, 51183), (177, 51252), (181, 51264), (186, 51270), (198, 51306),

Gene: Attoomi_32 Start: 23857, Stop: 24264, Start Num: 77
Candidate Starts for Attoomi_32:
(Start: 77 @23857 has 4 MA's), (104, 23938), (118, 23971), (125, 23995), (131, 24028), (169, 24148), (171, 24154), (172, 24157), (183, 24193), (185, 24196), (187, 24199),

Gene: Auspice_71 Start: 46676, Stop: 47095, Start Num: 83
Candidate Starts for Auspice_71:
(Start: 81 @46667 has 6 MA's), (Start: 83 @46676 has 7 MA's), (112, 46754), (138, 46841), (151, 46871), (163, 46913), (177, 46973), (207, 47048),

Gene: AvGardian_39 Start: 26215, Stop: 26541, Start Num: 101
Candidate Starts for AvGardian_39:
(7, 25681), (Start: 101 @26215 has 57 MA's), (140, 26338), (179, 26482), (181, 26488),

Gene: Avocadoman_36 Start: 25161, Stop: 25487, Start Num: 101
Candidate Starts for Avocadoman_36:
(Start: 101 @25161 has 57 MA's), (172, 25392), (179, 25428), (181, 25434),

Gene: Aziz_78 Start: 48719, Stop: 49120, Start Num: 84
Candidate Starts for Aziz_78:
(Start: 84 @48719 has 7 MA's), (105, 48785), (131, 48863), (163, 48956), (177, 49016), (198, 49070),

Gene: Azrael100_84 Start: 52399, Stop: 52803, Start Num: 85

Candidate Starts for Azrael100_84:

(54, 52318), (Start: 85 @52399 has 5 MA's), (117, 52486), (129, 52534), (137, 52558), (143, 52579), (146, 52585), (156, 52594), (184, 52696), (189, 52708), (207, 52756), (210, 52762), (216, 52780),

Gene: B22_52 Start: 33281, Stop: 33661, Start Num: 79

Candidate Starts for B22_52:

(70, 33251), (72, 33260), (Start: 79 @33281 has 17 MA's), (104, 33335), (135, 33431), (162, 33509), (170, 33545), (186, 33596),

Gene: B3_46 Start: 30516, Stop: 30896, Start Num: 79

Candidate Starts for B3_46:

(Start: 79 @30516 has 17 MA's), (104, 30570), (135, 30666), (170, 30780), (186, 30831),

Gene: BAjuniper_36 Start: 26884, Stop: 27216, Start Num: 101

Candidate Starts for BAjuniper_36:

(26, 26641), (Start: 101 @26884 has 57 MA's), (130, 26974), (140, 27010), (141, 27013), (168, 27103), (179, 27154), (181, 27160), (200, 27211),

Gene: BFK20_ORF52 Start: 41172, Stop: 41558, Start Num: 98

Candidate Starts for BFK20_ORF52:

(Start: 98 @41172 has 7 MA's), (120, 41238), (159, 41385), (161, 41391), (165, 41415), (166, 41421), (192, 41505),

Gene: BabeRuth_55 Start: 35784, Stop: 36176, Start Num: 80

Candidate Starts for BabeRuth_55:

(32, 35661), (38, 35682), (47, 35709), (Start: 80 @35784 has 53 MA's), (186, 36105),

Gene: BaboJay_84 Start: 52341, Stop: 52703, Start Num: 88

Candidate Starts for BaboJay_84:

(Start: 78 @52320 has 3 MA's), (Start: 88 @52341 has 9 MA's), (157, 52554), (177, 52638), (181, 52650), (186, 52656), (198, 52692),

Gene: BabyDaisy_36 Start: 25684, Stop: 26010, Start Num: 101

Candidate Starts for BabyDaisy_36:

(Start: 101 @25684 has 57 MA's), (136, 25792), (172, 25915), (179, 25951), (181, 25957),

Gene: BabyYoda_38 Start: 26829, Stop: 27155, Start Num: 101

Candidate Starts for BabyYoda_38:

(Start: 101 @26829 has 57 MA's), (138, 26949), (141, 26955), (156, 26997), (172, 27060), (176, 27081), (179, 27096), (181, 27102),

Gene: Bachaco_36 Start: 26844, Stop: 27173, Start Num: 101

Candidate Starts for Bachaco_36:

(Start: 101 @26844 has 57 MA's), (138, 26964), (140, 26967), (141, 26970), (179, 27111), (181, 27117),

Gene: BadStone_83 Start: 52301, Stop: 52663, Start Num: 89

Candidate Starts for BadStone_83:

(Start: 79 @52274 has 17 MA's), (Start: 89 @52301 has 107 MA's), (157, 52514), (177, 52598), (181, 52610), (186, 52616), (198, 52652),

Gene: BaileyBlu_37 Start: 25414, Stop: 25836, Start Num: 95
Candidate Starts for BaileyBlu_37:
(31, 25246), (41, 25300), (Start: 95 @25414 has 51 MA's), (106, 25459), (126, 25513), (169, 25666),
(171, 25672),

Gene: Balomoji_86 Start: 52725, Stop: 53087, Start Num: 89
Candidate Starts for Balomoji_86:
(74, 52692), (Start: 89 @52725 has 107 MA's), (157, 52938), (162, 52953), (177, 53022), (181,
53034), (186, 53040), (198, 53076),

Gene: Banquo_56 Start: 37048, Stop: 37422, Start Num: 99
Candidate Starts for Banquo_56:
(Start: 99 @37048 has 5 MA's), (Start: 100 @37051 has 1 MA's), (103, 37060), (110, 37096), (133,
37177), (145, 37204), (171, 37306), (191, 37372),

Gene: Bantam_72 Start: 52490, Stop: 52125, Start Num: 97
Candidate Starts for Bantam_72:
(86, 52520), (Start: 97 @52490 has 9 MA's), (184, 52193), (211, 52145),

Gene: Barbarian_85 Start: 50955, Stop: 51317, Start Num: 89
Candidate Starts for Barbarian_85:
(74, 50922), (Start: 89 @50955 has 107 MA's), (157, 51168), (162, 51183), (177, 51252), (181,
51264), (186, 51270), (198, 51306),

Gene: Barnstormer_43 Start: 27456, Stop: 27818, Start Num: 95
Candidate Starts for Barnstormer_43:
(35, 27303), (65, 27375), (Start: 95 @27456 has 51 MA's), (163, 27672), (181, 27747),

Gene: Bask21_86 Start: 51578, Stop: 51940, Start Num: 89
Candidate Starts for Bask21_86:
(74, 51545), (Start: 89 @51578 has 107 MA's), (157, 51791), (162, 51806), (177, 51875), (181,
51887), (186, 51893), (198, 51929),

Gene: BearBQ_90 Start: 50811, Stop: 51185, Start Num: 97
Candidate Starts for BearBQ_90:
(Start: 97 @50811 has 9 MA's), (103, 50823), (145, 50952), (158, 51009), (164, 51027), (169, 51048),
(170, 51051), (171, 51054), (172, 51057), (184, 51102), (186, 51105), (188, 51111), (191, 51120),
(196, 51132),

Gene: BelmontSKP_38 Start: 26045, Stop: 26371, Start Num: 101
Candidate Starts for BelmontSKP_38:
(Start: 101 @26045 has 57 MA's), (172, 26276), (179, 26312), (181, 26318),

Gene: Bench_89 Start: 52396, Stop: 52758, Start Num: 89
Candidate Starts for Bench_89:
(Start: 79 @52369 has 17 MA's), (Start: 89 @52396 has 107 MA's), (157, 52609), (177, 52693), (181,
52705), (186, 52711), (198, 52747),

Gene: Bernstein_34 Start: 23702, Stop: 24043, Start Num: 101
Candidate Starts for Bernstein_34:
(Start: 101 @23702 has 57 MA's), (131, 23795), (181, 23975),

Gene: Berrie_37 Start: 26747, Stop: 27190, Start Num: 95

Candidate Starts for Berrie_37:

(31, 26564), (41, 26618), (Start: 95 @26747 has 51 MA's), (169, 26999), (172, 27008), (180, 27047), (181, 27050),

Gene: BigBubba_86 Start: 51971, Stop: 52333, Start Num: 89

Candidate Starts for BigBubba_86:

(74, 51938), (Start: 89 @51971 has 107 MA's), (157, 52184), (162, 52199), (177, 52268), (181, 52280), (186, 52286), (198, 52322),

Gene: BilboSwaggins_85 Start: 52677, Stop: 53060, Start Num: 78

Candidate Starts for BilboSwaggins_85:

(Start: 78 @52677 has 3 MA's), (Start: 88 @52698 has 9 MA's), (157, 52911), (177, 52995), (181, 53007), (186, 53013), (198, 53049),

Gene: Birdsong_84 Start: 49089, Stop: 49466, Start Num: 97

Candidate Starts for Birdsong_84:

(29, 48849), (Start: 97 @49089 has 9 MA's), (103, 49101), (145, 49230), (151, 49251), (163, 49302), (169, 49326), (172, 49335), (184, 49380), (186, 49383), (191, 49398), (196, 49410), (209, 49443),

Gene: Bongo_71 Start: 46680, Stop: 47099, Start Num: 83

Candidate Starts for Bongo_71:

(Start: 81 @46671 has 6 MA's), (Start: 83 @46680 has 7 MA's), (112, 46758), (138, 46845), (151, 46875), (163, 46917), (177, 46977), (207, 47052),

Gene: Bosection6_50 Start: 33529, Stop: 33921, Start Num: 80

Candidate Starts for Bosection6_50:

(32, 33406), (38, 33427), (47, 33454), (Start: 80 @33529 has 53 MA's), (186, 33850),

Gene: Brahms_34 Start: 23649, Stop: 23990, Start Num: 101

Candidate Starts for Brahms_34:

(Start: 101 @23649 has 57 MA's), (131, 23742), (181, 23922),

Gene: Bricole_70 Start: 46403, Stop: 46822, Start Num: 83

Candidate Starts for Bricole_70:

(Start: 81 @46394 has 6 MA's), (Start: 83 @46403 has 7 MA's), (112, 46481), (138, 46568), (151, 46598), (163, 46640), (177, 46700), (207, 46775),

Gene: Bridgette_65 Start: 40727, Stop: 41116, Start Num: 79

Candidate Starts for Bridgette_65:

(Start: 79 @40727 has 17 MA's), (135, 40877),

Gene: Bruin_83 Start: 51275, Stop: 51637, Start Num: 89

Candidate Starts for Bruin_83:

(Start: 79 @51248 has 17 MA's), (Start: 89 @51275 has 107 MA's), (157, 51488), (177, 51572), (181, 51584), (186, 51590), (198, 51626),

Gene: BubbaBear_36 Start: 25617, Stop: 25943, Start Num: 101

Candidate Starts for BubbaBear_36:

(Start: 101 @25617 has 57 MA's), (172, 25848), (179, 25884), (181, 25890),

Gene: Buck_87 Start: 52980, Stop: 53342, Start Num: 89

Candidate Starts for Buck_87:

(Start: 79 @52953 has 17 MA's), (Start: 89 @52980 has 107 MA's), (157, 53193), (177, 53277), (181, 53289), (186, 53295), (198, 53331),

Gene: Burritobowl_37 Start: 25618, Stop: 25944, Start Num: 101

Candidate Starts for Burritobowl_37:

(Start: 101 @25618 has 57 MA's), (172, 25849), (179, 25885), (181, 25891),

Gene: Butters_52 Start: 35124, Stop: 35516, Start Num: 80

Candidate Starts for Butters_52:

(37, 35016), (Start: 80 @35124 has 53 MA's), (186, 35445),

Gene: Cactus_89 Start: 51619, Stop: 51981, Start Num: 89

Candidate Starts for Cactus_89:

(74, 51586), (Start: 89 @51619 has 107 MA's), (157, 51832), (162, 51847), (177, 51916), (181, 51928), (186, 51934), (198, 51970),

Gene: CallinAllBarbz_37 Start: 25811, Stop: 26263, Start Num: 95

Candidate Starts for CallinAllBarbz_37:

(31, 25643), (41, 25697), (Start: 95 @25811 has 51 MA's), (106, 25856), (112, 25874), (126, 25910), (172, 26072), (181, 26114), (225, 26249),

Gene: Carcharodon_49 Start: 34516, Stop: 34908, Start Num: 80

Candidate Starts for Carcharodon_49:

(Start: 80 @34516 has 53 MA's), (186, 34837),

Gene: Caron_47 Start: 28859, Stop: 29239, Start Num: 95

Candidate Starts for Caron_47:

(Start: 95 @28859 has 51 MA's), (181, 29150),

Gene: Cashington_35 Start: 24964, Stop: 25290, Start Num: 101

Candidate Starts for Cashington_35:

(Start: 101 @24964 has 57 MA's), (136, 25072), (172, 25195), (179, 25231), (181, 25237),

Gene: Cassia_36 Start: 25737, Stop: 26096, Start Num: 95

Candidate Starts for Cassia_36:

(30, 25515), (Start: 95 @25737 has 51 MA's), (181, 26025),

Gene: Celaena_35 Start: 26594, Stop: 26923, Start Num: 101

Candidate Starts for Celaena_35:

(Start: 101 @26594 has 57 MA's), (138, 26714), (140, 26717), (141, 26720), (179, 26861), (181, 26867),

Gene: Cen1621_40 Start: 25799, Stop: 26167, Start Num: 95

Candidate Starts for Cen1621_40:

(Start: 95 @25799 has 51 MA's), (126, 25886), (145, 25958), (162, 26006), (172, 26051), (180, 26090),

Gene: Charlie_50 Start: 33268, Stop: 33660, Start Num: 80

Candidate Starts for Charlie_50:

(32, 33145), (38, 33166), (47, 33193), (Start: 80 @33268 has 53 MA's), (186, 33589),

Gene: CheeseTouch_97 Start: 48676, Stop: 49053, Start Num: 97

Candidate Starts for CheeseTouch_97:

(29, 48436), (Start: 97 @48676 has 9 MA's), (103, 48688), (145, 48817), (151, 48838), (169, 48913), (184, 48967), (186, 48970), (191, 48985), (196, 48997), (209, 49030),

Gene: Chewbacca_51 Start: 34516, Stop: 34908, Start Num: 80

Candidate Starts for Chewbacca_51:

(Start: 80 @34516 has 53 MA's), (186, 34837),

Gene: ChiliPepper_34 Start: 26048, Stop: 26380, Start Num: 101

Candidate Starts for ChiliPepper_34:

(Start: 101 @26048 has 57 MA's), (136, 26159), (138, 26171), (141, 26177), (157, 26225), (172, 26282), (179, 26318), (181, 26324),

Gene: ChosenOne_86 Start: 51756, Stop: 52118, Start Num: 89

Candidate Starts for ChosenOne_86:

(Start: 79 @51729 has 17 MA's), (Start: 89 @51756 has 107 MA's), (157, 51969), (177, 52053), (181, 52065), (186, 52071), (198, 52107),

Gene: ChotaBhai_86 Start: 51943, Stop: 52305, Start Num: 89

Candidate Starts for ChotaBhai_86:

(74, 51910), (Start: 89 @51943 has 107 MA's), (157, 52156), (162, 52171), (177, 52240), (181, 52252), (186, 52258), (198, 52294),

Gene: ChuckDuck_63 Start: 40338, Stop: 40727, Start Num: 79

Candidate Starts for ChuckDuck_63:

(64, 40302), (Start: 79 @40338 has 17 MA's), (135, 40488),

Gene: Cjw1_86 Start: 53450, Stop: 53812, Start Num: 89

Candidate Starts for Cjw1_86:

(Start: 79 @53423 has 17 MA's), (Start: 89 @53450 has 107 MA's), (157, 53663), (177, 53747), (181, 53759), (186, 53765), (198, 53801),

Gene: Clayda5_35 Start: 23636, Stop: 23977, Start Num: 101

Candidate Starts for Clayda5_35:

(Start: 101 @23636 has 57 MA's), (131, 23729), (181, 23909),

Gene: Collard_63 Start: 45817, Stop: 46182, Start Num: 80

Candidate Starts for Collard_63:

(55, 45754), (Start: 80 @45817 has 53 MA's), (Start: 87 @45829 has 2 MA's), (122, 45919), (131, 45958), (140, 45982), (150, 46009), (170, 46078), (171, 46081), (181, 46123), (186, 46129), (188, 46135), (192, 46147), (199, 46165),

Gene: Coltrane_34 Start: 23649, Stop: 23990, Start Num: 101

Candidate Starts for Coltrane_34:

(Start: 101 @23649 has 57 MA's), (131, 23742), (181, 23922),

Gene: Command613_88 Start: 52795, Stop: 53157, Start Num: 89

Candidate Starts for Command613_88:

(Start: 79 @52768 has 17 MA's), (Start: 89 @52795 has 107 MA's), (157, 53008), (177, 53092), (181, 53104), (186, 53110), (198, 53146),

Gene: Community_38 Start: 27474, Stop: 27917, Start Num: 95

Candidate Starts for Community_38:

(Start: 95 @27474 has 51 MA's), (169, 27726), (172, 27735), (181, 27777), (192, 27804), (206, 27840),

Gene: Constance_63 Start: 40957, Stop: 41358, Start Num: 79

Candidate Starts for Constance_63:

(Start: 40 @40867 has 2 MA's), (42, 40870), (Start: 79 @40957 has 17 MA's), (135, 41107),

Gene: Contagion_82 Start: 51556, Stop: 51918, Start Num: 89

Candidate Starts for Contagion_82:

(Start: 79 @51529 has 17 MA's), (Start: 89 @51556 has 107 MA's), (157, 51769), (177, 51853), (181, 51865), (186, 51871), (198, 51907),

Gene: Cookies_83 Start: 51800, Stop: 52162, Start Num: 89

Candidate Starts for Cookies_83:

(74, 51767), (Start: 89 @51800 has 107 MA's), (157, 52013), (162, 52028), (177, 52097), (181, 52109), (186, 52115), (198, 52151),

Gene: Cosmo_85 Start: 52400, Stop: 52804, Start Num: 85

Candidate Starts for Cosmo_85:

(54, 52319), (Start: 85 @52400 has 5 MA's), (117, 52487), (129, 52535), (137, 52559), (143, 52580), (146, 52586), (156, 52595), (184, 52697), (189, 52709), (207, 52757), (210, 52763), (216, 52781),

Gene: Crewmate_41 Start: 26389, Stop: 26751, Start Num: 95

Candidate Starts for Crewmate_41:

(Start: 95 @26389 has 51 MA's), (140, 26527), (172, 26635), (181, 26677),

Gene: CroZenni_37 Start: 25508, Stop: 25834, Start Num: 101

Candidate Starts for CroZenni_37:

(Start: 101 @25508 has 57 MA's), (172, 25739), (179, 25775), (181, 25781),

Gene: CrystalP_85 Start: 52698, Stop: 53060, Start Num: 88

Candidate Starts for CrystalP_85:

(Start: 78 @52677 has 3 MA's), (Start: 88 @52698 has 9 MA's), (157, 52911), (177, 52995), (181, 53007), (186, 53013), (198, 53049),

Gene: Cyan_35 Start: 25187, Stop: 25630, Start Num: 95

Candidate Starts for Cyan_35:

(Start: 95 @25187 has 51 MA's), (126, 25286), (169, 25439), (181, 25490),

Gene: Czyszczone1_87 Start: 52259, Stop: 52621, Start Num: 89

Candidate Starts for Czyszczone1_87:

(Start: 79 @52232 has 17 MA's), (Start: 89 @52259 has 107 MA's), (157, 52472), (177, 52556), (181, 52568), (186, 52574), (198, 52610),

Gene: DS6A_86 Start: 55827, Stop: 56213, Start Num: 80

Candidate Starts for DS6A_86:

(Start: 80 @55827 has 53 MA's), (169, 56088), (170, 56091), (175, 56112), (186, 56142), (195, 56169), (208, 56202),

Gene: Dadosky_67 Start: 46186, Stop: 46551, Start Num: 80

Candidate Starts for Dadosky_67:

(68, 46150), (Start: 80 @46186 has 53 MA's), (Start: 87 @46198 has 2 MA's), (122, 46288), (131, 46327), (140, 46351), (150, 46378), (169, 46444), (170, 46447), (171, 46450), (181, 46492), (186,

46498), (188, 46504), (192, 46516), (199, 46534), (201, 46540),

Gene: Daikon_88 Start: 52746, Stop: 53108, Start Num: 89

Candidate Starts for Daikon_88:

(74, 52713), (Start: 89 @52746 has 107 MA's), (157, 52959), (162, 52974), (177, 53043), (181, 53055), (186, 53061), (198, 53097),

Gene: Dardanus_52 Start: 35477, Stop: 35866, Start Num: 99

Candidate Starts for Dardanus_52:

(Start: 99 @35477 has 5 MA's), (103, 35489), (107, 35519), (108, 35522), (171, 35735), (186, 35783),

Gene: Daredevil_63 Start: 48481, Stop: 48092, Start Num: 99

Candidate Starts for Daredevil_63:

(Start: 99 @48481 has 5 MA's), (127, 48376), (171, 48208), (179, 48172), (186, 48157), (196, 48133),

Gene: DatBoi_70 Start: 52480, Stop: 52115, Start Num: 97

Candidate Starts for DatBoi_70:

(Start: 97 @52480 has 9 MA's), (111, 52426), (139, 52336), (175, 52213), (184, 52183), (211, 52135),

Gene: Diane_36 Start: 27972, Stop: 28412, Start Num: 96

Candidate Starts for Diane_36:

(82, 27930), (Start: 96 @27972 has 1 MA's), (102, 27990), (106, 28017), (109, 28026), (112, 28035), (119, 28047), (160, 28209), (194, 28329), (210, 28368),

Gene: DickRichards_36 Start: 25947, Stop: 26273, Start Num: 101

Candidate Starts for DickRichards_36:

(Start: 101 @25947 has 57 MA's), (172, 26178), (179, 26214), (181, 26220),

Gene: Didgeridoo_39 Start: 26093, Stop: 26419, Start Num: 101

Candidate Starts for Didgeridoo_39:

(Start: 101 @26093 has 57 MA's), (172, 26324), (179, 26360), (181, 26366),

Gene: Diminimus_72 Start: 46666, Stop: 47094, Start Num: 81

Candidate Starts for Diminimus_72:

(Start: 81 @46666 has 6 MA's), (Start: 83 @46675 has 7 MA's), (112, 46753), (138, 46840), (151, 46870), (163, 46912), (177, 46972), (207, 47047),

Gene: DirtyBubble_37 Start: 26477, Stop: 26803, Start Num: 101

Candidate Starts for DirtyBubble_37:

(1, 25724), (8, 25964), (10, 25982), (16, 26018), (19, 26087), (Start: 101 @26477 has 57 MA's), (138, 26597), (141, 26603), (172, 26708), (176, 26729), (179, 26744), (181, 26750),

Gene: Dismas_35 Start: 26219, Stop: 26551, Start Num: 101

Candidate Starts for Dismas_35:

(Start: 101 @26219 has 57 MA's), (136, 26330), (138, 26342), (141, 26348), (157, 26396), (172, 26453), (179, 26489), (181, 26495),

Gene: DoctorDiddles_85 Start: 51987, Stop: 52349, Start Num: 89

Candidate Starts for DoctorDiddles_85:

(74, 51954), (Start: 89 @51987 has 107 MA's), (157, 52200), (162, 52215), (177, 52284), (181, 52296), (186, 52302), (198, 52338),

Gene: DonkeyMan_55 Start: 37973, Stop: 38404, Start Num: 79

Candidate Starts for DonkeyMan_55:

(Start: 79 @37973 has 17 MA's), (186, 38288), (205, 38339), (224, 38396),

Gene: Doobus_36 Start: 25328, Stop: 25654, Start Num: 101

Candidate Starts for Doobus_36:

(Start: 101 @25328 has 57 MA's), (172, 25559), (179, 25595), (181, 25601),

Gene: Dori_67 Start: 52520, Stop: 52948, Start Num: 80

Candidate Starts for Dori_67:

(Start: 80 @52520 has 53 MA's), (104, 52574), (122, 52625), (131, 52664), (133, 52670), (151, 52739), (162, 52781), (167, 52805), (168, 52808), (170, 52817), (186, 52868), (190, 52883), (194, 52892),

Gene: Doucette_50 Start: 32710, Stop: 33090, Start Num: 79

Candidate Starts for Doucette_50:

(Start: 79 @32710 has 17 MA's), (104, 32764), (135, 32860), (170, 32974), (181, 33019), (184, 33022),

Gene: DrDrey_86 Start: 53178, Stop: 53540, Start Num: 89

Candidate Starts for DrDrey_86:

(Start: 79 @53151 has 17 MA's), (Start: 89 @53178 has 107 MA's), (157, 53391), (177, 53475), (181, 53487), (186, 53493), (198, 53529),

Gene: DrManhattan_35 Start: 24117, Stop: 24467, Start Num: 95

Candidate Starts for DrManhattan_35:

(31, 23940), (33, 23964), (41, 23994), (60, 24036), (Start: 95 @24117 has 51 MA's), (126, 24201), (181, 24405), (184, 24411),

Gene: DrSierra_34 Start: 24046, Stop: 24489, Start Num: 95

Candidate Starts for DrSierra_34:

(30, 23824), (Start: 95 @24046 has 51 MA's), (169, 24298), (172, 24307), (181, 24349), (202, 24406), (222, 24469),

Gene: Dubu_33 Start: 24220, Stop: 24681, Start Num: 77

Candidate Starts for Dubu_33:

(Start: 77 @24220 has 4 MA's), (145, 24400), (163, 24451), (169, 24475), (170, 24478), (212, 24589),

Gene: Dulcita_72 Start: 46667, Stop: 47095, Start Num: 81

Candidate Starts for Dulcita_72:

(Start: 81 @46667 has 6 MA's), (Start: 83 @46676 has 7 MA's), (112, 46754), (138, 46841), (151, 46871), (163, 46913), (177, 46973), (207, 47048),

Gene: Dumbo_86 Start: 51661, Stop: 52023, Start Num: 89

Candidate Starts for Dumbo_86:

(Start: 79 @51634 has 17 MA's), (Start: 89 @51661 has 107 MA's), (157, 51874), (177, 51958), (181, 51970), (186, 51976), (198, 52012),

Gene: Duplicity_49 Start: 34525, Stop: 34917, Start Num: 80

Candidate Starts for Duplicity_49:

(Start: 80 @34525 has 53 MA's), (186, 34846),

Gene: Dusk_83 Start: 51961, Stop: 52323, Start Num: 89

Candidate Starts for Dusk_83:

(Start: 79 @51934 has 17 MA's), (Start: 89 @51961 has 107 MA's), (157, 52174), (177, 52258), (181, 52270), (186, 52276), (198, 52312),

Gene: E1_44 Start: 29853, Stop: 30233, Start Num: 79

Candidate Starts for E1_44:

(65, 29811), (70, 29823), (72, 29832), (Start: 79 @29853 has 17 MA's), (104, 29907), (135, 30003), (170, 30117), (186, 30168),

Gene: E6_48 Start: 32434, Stop: 32817, Start Num: 79

Candidate Starts for E6_48:

(65, 32392), (70, 32404), (72, 32413), (Start: 79 @32434 has 17 MA's), (104, 32488), (135, 32584), (170, 32698), (181, 32743),

Gene: Easy2Say_87 Start: 53142, Stop: 53525, Start Num: 78

Candidate Starts for Easy2Say_87:

(Start: 78 @53142 has 3 MA's), (Start: 88 @53163 has 9 MA's), (157, 53376), (177, 53460), (181, 53472), (186, 53478), (198, 53514),

Gene: Eden_35 Start: 24432, Stop: 24761, Start Num: 101

Candidate Starts for Eden_35:

(Start: 101 @24432 has 57 MA's), (131, 24525), (138, 24552), (140, 24555), (179, 24699), (181, 24705),

Gene: Edugator_64 Start: 47616, Stop: 47969, Start Num: 87

Candidate Starts for Edugator_64:

(68, 47568), (Start: 80 @47604 has 53 MA's), (Start: 87 @47616 has 2 MA's), (122, 47706), (131, 47745), (140, 47769), (150, 47796), (169, 47862), (170, 47865), (171, 47868), (181, 47910), (186, 47916), (188, 47922), (192, 47934), (199, 47952), (201, 47958),

Gene: Eileen_59 Start: 38213, Stop: 38605, Start Num: 79

Candidate Starts for Eileen_59:

(51, 38147), (67, 38177), (69, 38183), (Start: 79 @38213 has 17 MA's), (135, 38363),

Gene: Elezi_35 Start: 26877, Stop: 27227, Start Num: 95

Candidate Starts for Elezi_35:

(67, 26808), (Start: 95 @26877 has 51 MA's), (106, 26922), (126, 26961), (140, 27015), (169, 27114), (172, 27123), (181, 27165),

Gene: Elite2014_85 Start: 51755, Stop: 52117, Start Num: 89

Candidate Starts for Elite2014_85:

(Start: 79 @51728 has 17 MA's), (Start: 89 @51755 has 107 MA's), (157, 51968), (177, 52052), (181, 52064), (186, 52070), (198, 52106),

Gene: Elph10_86 Start: 51757, Stop: 52119, Start Num: 89

Candidate Starts for Elph10_86:

(Start: 79 @51730 has 17 MA's), (Start: 89 @51757 has 107 MA's), (157, 51970), (177, 52054), (181, 52066), (186, 52072), (198, 52108),

Gene: Elva_39 Start: 26539, Stop: 26865, Start Num: 101

Candidate Starts for Elva_39:

(Start: 101 @26539 has 57 MA's), (131, 26632), (140, 26662), (176, 26791), (179, 26806), (181, 26812),

Gene: EmiRose_43 Start: 35914, Stop: 36360, Start Num: 98

Candidate Starts for EmiRose_43:

(Start: 98 @35914 has 7 MA's), (108, 35959), (148, 36082), (166, 36166), (184, 36229), (194, 36256), (218, 36313),

Gene: Emmina_86 Start: 51659, Stop: 52021, Start Num: 89

Candidate Starts for Emmina_86:

(Start: 79 @51632 has 17 MA's), (Start: 89 @51659 has 107 MA's), (157, 51872), (177, 51956), (181, 51968), (186, 51974), (198, 52010),

Gene: Emotion_40 Start: 26793, Stop: 27239, Start Num: 94

Candidate Starts for Emotion_40:

(Start: 94 @26793 has 2 MA's), (181, 27096),

Gene: EniyanLRS_81 Start: 52139, Stop: 52543, Start Num: 85

Candidate Starts for EniyanLRS_81:

(54, 52058), (Start: 85 @52139 has 5 MA's), (117, 52226), (129, 52274), (137, 52298), (143, 52319), (146, 52325), (156, 52334), (184, 52436), (189, 52448), (207, 52496), (210, 52502), (216, 52520),

Gene: Eraser_35 Start: 26868, Stop: 27218, Start Num: 95

Candidate Starts for Eraser_35:

(Start: 95 @26868 has 51 MA's), (106, 26913), (126, 26952), (140, 27006), (169, 27105), (181, 27156),

Gene: Estes_80 Start: 49066, Stop: 49467, Start Num: 84

Candidate Starts for Estes_80:

(Start: 84 @49066 has 7 MA's), (105, 49132), (131, 49210), (163, 49303), (177, 49363), (198, 49417),

Gene: Eula_38 Start: 25719, Stop: 26045, Start Num: 101

Candidate Starts for Eula_38:

(Start: 101 @25719 has 57 MA's), (172, 25950), (176, 25971), (179, 25986),

Gene: Eureka_85 Start: 52671, Stop: 53033, Start Num: 89

Candidate Starts for Eureka_85:

(Start: 79 @52644 has 17 MA's), (Start: 89 @52671 has 107 MA's), (157, 52884), (177, 52968), (181, 52980), (186, 52986), (198, 53022),

Gene: Exile_33 Start: 27350, Stop: 27793, Start Num: 95

Candidate Starts for Exile_33:

(Start: 95 @27350 has 51 MA's), (172, 27611), (181, 27653), (184, 27659), (190, 27677), (195, 27689),

Gene: Feyre_68 Start: 49578, Stop: 49943, Start Num: 80

Candidate Starts for Feyre_68:

(53, 49515), (55, 49518), (Start: 80 @49578 has 53 MA's), (Start: 87 @49590 has 2 MA's), (122, 49680), (131, 49719), (140, 49743), (150, 49770), (170, 49839), (171, 49842), (186, 49890), (188, 49896), (201, 49932),

Gene: Filch_87 Start: 51684, Stop: 52046, Start Num: 89

Candidate Starts for Filch_87:

(Start: 79 @51657 has 17 MA's), (Start: 89 @51684 has 107 MA's), (157, 51897), (177, 51981), (181, 51993), (186, 51999), (198, 52035),

Gene: Finalfrontier_37 Start: 26331, Stop: 26657, Start Num: 101
Candidate Starts for Finalfrontier_37:
(Start: 101 @26331 has 57 MA's), (172, 26562), (178, 26595), (181, 26604),

Gene: FireRed_90 Start: 53249, Stop: 53611, Start Num: 89
Candidate Starts for FireRed_90:
(Start: 79 @53222 has 17 MA's), (Start: 89 @53249 has 107 MA's), (157, 53462), (177, 53546), (181, 53558), (186, 53564), (198, 53600),

Gene: FlameThrower_35 Start: 26044, Stop: 26373, Start Num: 101
Candidate Starts for FlameThrower_35:
(Start: 101 @26044 has 57 MA's), (138, 26164), (140, 26167), (141, 26170), (179, 26311), (181, 26317),

Gene: Floof_46 Start: 28537, Stop: 28899, Start Num: 95
Candidate Starts for Floof_46:
(Start: 95 @28537 has 51 MA's), (105, 28582), (149, 28705), (181, 28828),

Gene: Flypotenuse_82 Start: 51609, Stop: 51971, Start Num: 89
Candidate Starts for Flypotenuse_82:
(74, 51576), (Start: 89 @51609 has 107 MA's), (157, 51822), (162, 51837), (177, 51906), (181, 51918), (186, 51924), (198, 51960),

Gene: Franklin22_36 Start: 24418, Stop: 24747, Start Num: 101
Candidate Starts for Franklin22_36:
(Start: 101 @24418 has 57 MA's), (130, 24505), (140, 24541), (141, 24544), (178, 24682), (179, 24685), (181, 24691),

Gene: Fulbright_48 Start: 33605, Stop: 33997, Start Num: 80
Candidate Starts for Fulbright_48:
(Start: 80 @33605 has 53 MA's), (186, 33926),

Gene: GMA4_60 Start: 40216, Stop: 40572, Start Num: 97
Candidate Starts for GMA4_60:
(54, 40105), (Start: 97 @40216 has 9 MA's), (186, 40510),

Gene: Gack_34 Start: 24169, Stop: 24498, Start Num: 101
Candidate Starts for Gack_34:
(Start: 101 @24169 has 57 MA's), (140, 24292), (178, 24433), (181, 24442),

Gene: Gage_88 Start: 52402, Stop: 52764, Start Num: 89
Candidate Starts for Gage_88:
(74, 52369), (Start: 89 @52402 has 107 MA's), (157, 52615), (177, 52699), (181, 52711), (186, 52717), (198, 52753),

Gene: GardenSalsa_80 Start: 49270, Stop: 49671, Start Num: 84
Candidate Starts for GardenSalsa_80:
(Start: 84 @49270 has 7 MA's), (131, 49414), (163, 49507), (177, 49567), (198, 49621),

Gene: GardenState_44 Start: 27681, Stop: 28043, Start Num: 95
Candidate Starts for GardenState_44:
(Start: 95 @27681 has 51 MA's), (149, 27849), (163, 27897), (181, 27972),

Gene: Gator_84 Start: 52452, Stop: 52814, Start Num: 89

Candidate Starts for Gator_84:

(74, 52419), (Start: 89 @52452 has 107 MA's), (157, 52665), (162, 52680), (177, 52749), (181, 52761), (186, 52767), (198, 52803),

Gene: Gemini_91 Start: 53056, Stop: 53418, Start Num: 89

Candidate Starts for Gemini_91:

(Start: 79 @53029 has 17 MA's), (Start: 89 @53056 has 107 MA's), (157, 53269), (177, 53353), (181, 53365), (186, 53371), (198, 53407),

Gene: GenevaB15_79 Start: 48719, Stop: 49120, Start Num: 84

Candidate Starts for GenevaB15_79:

(Start: 84 @48719 has 7 MA's), (105, 48785), (131, 48863), (163, 48956), (177, 49016), (198, 49070),

Gene: Gengar_65 Start: 47565, Stop: 47930, Start Num: 80

Candidate Starts for Gengar_65:

(Start: 40 @47475 has 2 MA's), (53, 47502), (55, 47505), (Start: 80 @47565 has 53 MA's), (Start: 87 @47577 has 2 MA's), (122, 47667), (131, 47706), (140, 47730), (150, 47757), (170, 47826), (171, 47829), (186, 47877), (188, 47883), (201, 47919),

Gene: Gex_49 Start: 34532, Stop: 34924, Start Num: 80

Candidate Starts for Gex_49:

(Start: 80 @34532 has 53 MA's), (186, 34853),

Gene: Glaske16_73 Start: 47145, Stop: 47573, Start Num: 81

Candidate Starts for Glaske16_73:

(Start: 81 @47145 has 6 MA's), (Start: 83 @47154 has 7 MA's), (112, 47232), (138, 47319), (151, 47349), (163, 47391), (177, 47451), (207, 47526),

Gene: Glexan_85 Start: 52739, Stop: 53101, Start Num: 89

Candidate Starts for Glexan_85:

(74, 52706), (Start: 89 @52739 has 107 MA's), (157, 52952), (162, 52967), (177, 53036), (181, 53048), (186, 53054), (198, 53090),

Gene: GlobiWarming_67 Start: 40113, Stop: 40502, Start Num: 79

Candidate Starts for GlobiWarming_67:

(Start: 79 @40113 has 17 MA's), (135, 40263),

Gene: Goku_85 Start: 52400, Stop: 52762, Start Num: 89

Candidate Starts for Goku_85:

(Start: 79 @52373 has 17 MA's), (Start: 89 @52400 has 107 MA's), (157, 52613), (177, 52697), (181, 52709), (186, 52715), (198, 52751),

Gene: GoldenSpark_90 Start: 52539, Stop: 52901, Start Num: 89

Candidate Starts for GoldenSpark_90:

(Start: 79 @52512 has 17 MA's), (Start: 89 @52539 has 107 MA's), (157, 52752), (177, 52836), (181, 52848), (186, 52854), (198, 52890),

Gene: Goldilocks_89 Start: 51897, Stop: 52259, Start Num: 89

Candidate Starts for Goldilocks_89:

(74, 51864), (Start: 89 @51897 has 107 MA's), (157, 52110), (177, 52194), (181, 52206), (186, 52212), (198, 52248),

Gene: GooberAzure_89 Start: 52539, Stop: 52901, Start Num: 89
Candidate Starts for GooberAzure_89:
(Start: 79 @52512 has 17 MA's), (Start: 89 @52539 has 107 MA's), (157, 52752), (177, 52836), (181, 52848), (186, 52854), (198, 52890),

Gene: Greely_206 Start: 116895, Stop: 117263, Start Num: 89
Candidate Starts for Greely_206:
(34, 116745), (39, 116763), (44, 116781), (Start: 76 @116859 has 2 MA's), (Start: 89 @116895 has 107 MA's), (124, 117006), (142, 117072), (152, 117090), (186, 117210), (188, 117216),

Gene: Gretchen_45 Start: 29159, Stop: 29515, Start Num: 95
Candidate Starts for Gretchen_45:
(Start: 95 @29159 has 51 MA's), (105, 29204), (129, 29261), (181, 29450), (197, 29492),

Gene: Gspu1_48 Start: 35124, Stop: 35474, Start Num: 103
Candidate Starts for Gspu1_48:
(Start: 78 @35067 has 3 MA's), (Start: 98 @35112 has 7 MA's), (103, 35124), (133, 35241), (179, 35403), (184, 35415), (186, 35418),

Gene: Guillsminger_66 Start: 47417, Stop: 47872, Start Num: 40
Candidate Starts for Guillsminger_66:
(Start: 40 @47417 has 2 MA's), (53, 47444), (55, 47447), (Start: 80 @47507 has 53 MA's), (Start: 87 @47519 has 2 MA's), (122, 47609), (131, 47648), (140, 47672), (150, 47699), (170, 47768), (171, 47771), (186, 47819), (188, 47825), (201, 47861),

Gene: Gustav_66 Start: 43170, Stop: 43571, Start Num: 98
Candidate Starts for Gustav_66:
(Start: 98 @43170 has 7 MA's), (158, 43383), (186, 43476), (195, 43503), (198, 43512), (213, 43542), (217, 43557), (219, 43560),

Gene: HanKaySha_86 Start: 51837, Stop: 52199, Start Num: 89
Candidate Starts for HanKaySha_86:
(Start: 79 @51810 has 17 MA's), (Start: 89 @51837 has 107 MA's), (157, 52050), (177, 52134), (181, 52146), (186, 52152), (198, 52188),

Gene: Harella_86 Start: 53255, Stop: 53617, Start Num: 89
Candidate Starts for Harella_86:
(74, 53222), (Start: 89 @53255 has 107 MA's), (157, 53468), (162, 53483), (177, 53552), (181, 53564), (186, 53570), (198, 53606),

Gene: Heftyboy_66 Start: 47886, Stop: 48251, Start Num: 80
Candidate Starts for Heftyboy_66:
(Start: 40 @47796 has 2 MA's), (53, 47823), (55, 47826), (Start: 80 @47886 has 53 MA's), (Start: 87 @47898 has 2 MA's), (122, 47988), (131, 48027), (140, 48051), (150, 48078), (170, 48147), (171, 48150), (181, 48192), (186, 48198), (188, 48204), (201, 48240),

Gene: Heinz_56 Start: 36903, Stop: 37334, Start Num: 79
Candidate Starts for Heinz_56:
(Start: 79 @36903 has 17 MA's), (205, 37269),

Gene: Henry_84 Start: 52138, Stop: 52500, Start Num: 88
Candidate Starts for Henry_84:

(Start: 78 @52117 has 3 MA's), (Start: 88 @52138 has 9 MA's), (157, 52351), (177, 52435), (181, 52447), (186, 52453), (198, 52489),

Gene: Hibiscus_57 Start: 36872, Stop: 37315, Start Num: 76

Candidate Starts for Hibiscus_57:

(4, 36347), (5, 36353), (6, 36401), (9, 36419), (13, 36458), (15, 36467), (20, 36548), (36, 36767), (Start: 76 @36872 has 2 MA's), (205, 37250),

Gene: Highbury_85 Start: 51828, Stop: 52190, Start Num: 89

Candidate Starts for Highbury_85:

(Start: 79 @51801 has 17 MA's), (Start: 89 @51828 has 107 MA's), (157, 52041), (177, 52125), (181, 52137), (186, 52143), (198, 52179),

Gene: Holt_91 Start: 52953, Stop: 53315, Start Num: 89

Candidate Starts for Holt_91:

(Start: 79 @52926 has 17 MA's), (Start: 89 @52953 has 107 MA's), (157, 53166), (177, 53250), (181, 53262), (186, 53268), (198, 53304),

Gene: Honk_41 Start: 24866, Stop: 25207, Start Num: 95

Candidate Starts for Honk_41:

(93, 24857), (Start: 95 @24866 has 51 MA's), (180, 25157),

Gene: Hoonter_89 Start: 52399, Stop: 52761, Start Num: 89

Candidate Starts for Hoonter_89:

(74, 52366), (Start: 89 @52399 has 107 MA's), (157, 52612), (162, 52627), (177, 52696), (181, 52708), (186, 52714), (198, 52750),

Gene: Hokey_86 Start: 52369, Stop: 52731, Start Num: 89

Candidate Starts for Hokey_86:

(Start: 79 @52342 has 17 MA's), (Start: 89 @52369 has 107 MA's), (157, 52582), (177, 52666), (181, 52678), (186, 52684), (198, 52720),

Gene: HufflyPuff_89 Start: 53202, Stop: 53564, Start Num: 89

Candidate Starts for HufflyPuff_89:

(Start: 79 @53175 has 17 MA's), (Start: 89 @53202 has 107 MA's), (157, 53415), (177, 53499), (181, 53511), (186, 53517), (188, 53523), (198, 53553),

Gene: IAmGroot_44 Start: 28148, Stop: 28510, Start Num: 95

Candidate Starts for IAmGroot_44:

(Start: 95 @28148 has 51 MA's), (149, 28316), (163, 28364), (181, 28439),

Gene: IHOP_84 Start: 52301, Stop: 52663, Start Num: 89

Candidate Starts for IHOP_84:

(Start: 79 @52274 has 17 MA's), (Start: 89 @52301 has 107 MA's), (157, 52514), (177, 52598), (181, 52610), (186, 52616), (198, 52652),

Gene: IPhone7_71 Start: 46680, Stop: 47099, Start Num: 83

Candidate Starts for IPhone7_71:

(Start: 81 @46671 has 6 MA's), (Start: 83 @46680 has 7 MA's), (112, 46758), (138, 46845), (151, 46875), (163, 46917), (177, 46977), (207, 47052),

Gene: Icarian_42 Start: 27112, Stop: 27438, Start Num: 101

Candidate Starts for Icarian_42:

(2, 26479), (8, 26599), (10, 26617), (16, 26653), (19, 26722), (Start: 101 @27112 has 57 MA's), (141, 27238), (156, 27280), (172, 27343), (176, 27364), (179, 27379), (181, 27385),

Gene: Icee_87 Start: 52066, Stop: 52428, Start Num: 89

Candidate Starts for Icee_87:

(74, 52033), (Start: 89 @52066 has 107 MA's), (157, 52279), (162, 52294), (177, 52363), (181, 52375), (186, 52381), (198, 52417),

Gene: Inca_83 Start: 50790, Stop: 51152, Start Num: 88

Candidate Starts for Inca_83:

(Start: 78 @50769 has 3 MA's), (Start: 88 @50790 has 9 MA's), (157, 51003), (177, 51087), (181, 51099), (186, 51105), (198, 51141),

Gene: IndyLu_36 Start: 25645, Stop: 25971, Start Num: 101

Candidate Starts for IndyLu_36:

(Start: 101 @25645 has 57 MA's), (172, 25876), (179, 25912), (181, 25918),

Gene: InvictusManeo_63 Start: 45860, Stop: 46225, Start Num: 80

Candidate Starts for InvictusManeo_63:

(55, 45797), (Start: 80 @45860 has 53 MA's), (Start: 87 @45872 has 2 MA's), (122, 45962), (131, 46001), (140, 46025), (150, 46052), (170, 46121), (171, 46124), (181, 46166), (186, 46172), (188, 46178), (192, 46190), (199, 46208),

Gene: Iter_37 Start: 25853, Stop: 26296, Start Num: 95

Candidate Starts for Iter_37:

(45, 25724), (Start: 95 @25853 has 51 MA's), (106, 25898), (169, 26105), (172, 26114), (181, 26156), (184, 26162),

Gene: IttyBittyPiggy_36 Start: 25503, Stop: 25862, Start Num: 95

Candidate Starts for IttyBittyPiggy_36:

(Start: 95 @25503 has 51 MA's), (140, 25641), (181, 25791),

Gene: Jamie19_48 Start: 34075, Stop: 34467, Start Num: 80

Candidate Starts for Jamie19_48:

(32, 33952), (38, 33973), (47, 34000), (Start: 80 @34075 has 53 MA's), (186, 34396),

Gene: Janeemi_38 Start: 27485, Stop: 27928, Start Num: 95

Candidate Starts for Janeemi_38:

(49, 27377), (52, 27380), (58, 27389), (Start: 95 @27485 has 51 MA's), (169, 27737), (172, 27746), (181, 27788), (192, 27815),

Gene: JasmineDragon_42 Start: 26737, Stop: 27180, Start Num: 94

Candidate Starts for JasmineDragon_42:

(Start: 94 @26737 has 2 MA's), (126, 26836), (181, 27040), (193, 27070),

Gene: JeTaime_86 Start: 53018, Stop: 53380, Start Num: 89

Candidate Starts for JeTaime_86:

(Start: 79 @52991 has 17 MA's), (Start: 89 @53018 has 107 MA's), (157, 53231), (177, 53315), (181, 53327), (186, 53333), (198, 53369),

Gene: Joemato_37 Start: 25218, Stop: 25661, Start Num: 95

Candidate Starts for Joemato_37:

(Start: 95 @25218 has 51 MA's), (126, 25317), (169, 25470), (181, 25521),

Gene: JohnDoe_35 Start: 25209, Stop: 25652, Start Num: 95

Candidate Starts for JohnDoe_35:

(Start: 95 @25209 has 51 MA's), (169, 25461), (181, 25512),

Gene: Johnathan_36 Start: 25051, Stop: 25377, Start Num: 101

Candidate Starts for Johnathan_36:

(Start: 101 @25051 has 57 MA's), (172, 25282), (179, 25318), (181, 25324),

Gene: Jojo24_56 Start: 37218, Stop: 37661, Start Num: 76

Candidate Starts for Jojo24_56:

(Start: 76 @37218 has 2 MA's), (186, 37545), (205, 37596),

Gene: Jovita_38 Start: 25821, Stop: 26147, Start Num: 101

Candidate Starts for Jovita_38:

(Start: 101 @25821 has 57 MA's), (172, 26052), (176, 26073), (179, 26088),

Gene: Jstan_37 Start: 26862, Stop: 27212, Start Num: 95

Candidate Starts for Jstan_37:

(Start: 95 @26862 has 51 MA's), (106, 26907), (126, 26946), (140, 27000), (169, 27099), (181, 27150),

Gene: Judy_67 Start: 41178, Stop: 41567, Start Num: 79

Candidate Starts for Judy_67:

(Start: 79 @41178 has 17 MA's), (135, 41328), (162, 41403), (188, 41496),

Gene: JuneStar_37 Start: 27633, Stop: 27992, Start Num: 95

Candidate Starts for JuneStar_37:

(18, 27243), (Start: 95 @27633 has 51 MA's), (126, 27717), (140, 27771), (163, 27846), (181, 27921),

Gene: Kanye_83 Start: 51885, Stop: 52247, Start Num: 89

Candidate Starts for Kanye_83:

(Start: 79 @51858 has 17 MA's), (Start: 89 @51885 has 107 MA's), (157, 52098), (177, 52182), (181, 52194), (186, 52200), (198, 52236),

Gene: Karkharias_63 Start: 39837, Stop: 40226, Start Num: 78

Candidate Starts for Karkharias_63:

(Start: 78 @39837 has 3 MA's), (135, 39987), (173, 40113),

Gene: Katzastrophic_36 Start: 26173, Stop: 26502, Start Num: 101

Candidate Starts for Katzastrophic_36:

(Start: 101 @26173 has 57 MA's), (138, 26293), (140, 26296), (141, 26299), (179, 26440), (181, 26446),

Gene: Kaylissa_35 Start: 25154, Stop: 25597, Start Num: 95

Candidate Starts for Kaylissa_35:

(Start: 95 @25154 has 51 MA's), (169, 25406), (181, 25457),

Gene: KeAlii_36 Start: 25807, Stop: 26250, Start Num: 95

Candidate Starts for KeAlii_36:

(31, 25615), (33, 25639), (41, 25669), (60, 25711), (66, 25723), (Start: 95 @25807 has 51 MA's), (126, 25906), (169, 26059), (181, 26110), (184, 26116), (190, 26134), (202, 26167),

Gene: Kenzers_37 Start: 25644, Stop: 25970, Start Num: 101
Candidate Starts for Kenzers_37:
(Start: 101 @25644 has 57 MA's), (140, 25767), (176, 25896), (179, 25911),

Gene: Kevin1_51 Start: 34560, Stop: 34952, Start Num: 80
Candidate Starts for Kevin1_51:
(37, 34452), (Start: 80 @34560 has 53 MA's), (186, 34881), (188, 34887), (190, 34896),

Gene: Kieran_35 Start: 26228, Stop: 26560, Start Num: 101
Candidate Starts for Kieran_35:
(3, 25631), (11, 25739), (Start: 101 @26228 has 57 MA's), (136, 26339), (138, 26351), (141, 26357),
(154, 26393), (157, 26405), (179, 26498), (181, 26504),

Gene: Kimchi_90 Start: 52405, Stop: 52767, Start Num: 89
Candidate Starts for Kimchi_90:
(74, 52372), (Start: 89 @52405 has 107 MA's), (157, 52618), (177, 52702), (181, 52714), (186,
52720), (198, 52756),

Gene: Kostya_86 Start: 52403, Stop: 52765, Start Num: 89
Candidate Starts for Kostya_86:
(Start: 79 @52376 has 17 MA's), (Start: 89 @52403 has 107 MA's), (157, 52616), (177, 52700), (181,
52712), (186, 52718), (198, 52754),

Gene: Kozie_44 Start: 32286, Stop: 32642, Start Num: 90
Candidate Starts for Kozie_44:
(Start: 90 @32286 has 1 MA's), (130, 32409), (186, 32586), (188, 32592), (192, 32604),

Gene: Kratio_63 Start: 45599, Stop: 45964, Start Num: 80
Candidate Starts for Kratio_63:
(55, 45536), (Start: 80 @45599 has 53 MA's), (Start: 87 @45611 has 2 MA's), (122, 45701), (131,
45740), (140, 45764), (150, 45791), (170, 45860), (171, 45863), (181, 45905), (186, 45911), (188,
45917), (192, 45929), (199, 45947),

Gene: Kukla_68 Start: 40006, Stop: 40383, Start Num: 79
Candidate Starts for Kukla_68:
(Start: 79 @40006 has 17 MA's), (104, 40060), (122, 40108), (140, 40171), (141, 40174), (162,
40231), (171, 40270), (181, 40312), (194, 40342), (195, 40345), (214, 40375),

Gene: Kumao_67 Start: 47222, Stop: 47653, Start Num: 80
Candidate Starts for Kumao_67:
(Start: 80 @47222 has 53 MA's), (162, 47462), (170, 47498), (188, 47555), (192, 47567), (204,
47600),

Gene: Lahqtemish_36 Start: 25690, Stop: 26016, Start Num: 101
Candidate Starts for Lahqtemish_36:
(Start: 101 @25690 has 57 MA's), (172, 25921), (181, 25963),

Gene: Larva_66 Start: 47058, Stop: 47423, Start Num: 80
Candidate Starts for Larva_66:
(68, 47022), (Start: 80 @47058 has 53 MA's), (Start: 87 @47070 has 2 MA's), (122, 47160), (131,
47199), (140, 47223), (150, 47250), (169, 47316), (170, 47319), (171, 47322), (181, 47364), (186,
47370), (188, 47376), (192, 47388), (199, 47406), (201, 47412),

Gene: Lego_35 Start: 25100, Stop: 25543, Start Num: 95
Candidate Starts for Lego_35:
(59, 25007), (Start: 95 @25100 has 51 MA's), (169, 25352), (181, 25403),

Gene: Leston_65 Start: 47546, Stop: 48001, Start Num: 40
Candidate Starts for Leston_65:
(Start: 40 @47546 has 2 MA's), (53, 47573), (55, 47576), (Start: 80 @47636 has 53 MA's), (Start: 87 @47648 has 2 MA's), (122, 47738), (131, 47777), (140, 47801), (150, 47828), (170, 47897), (171, 47900), (186, 47948), (188, 47954), (201, 47990),

Gene: Liebe_37 Start: 26991, Stop: 27434, Start Num: 95
Candidate Starts for Liebe_37:
(Start: 95 @26991 has 51 MA's), (Start: 123 @27078 has 1 MA's), (169, 27243), (172, 27252), (180, 27291), (181, 27294), (184, 27300),

Gene: Lilac_88 Start: 52154, Stop: 52516, Start Num: 89
Candidate Starts for Lilac_88:
(Start: 79 @52127 has 17 MA's), (Start: 89 @52154 has 107 MA's), (157, 52367), (162, 52382), (177, 52451), (181, 52463), (186, 52469), (198, 52505),

Gene: LilhomieP_71 Start: 47159, Stop: 47578, Start Num: 83
Candidate Starts for LilhomieP_71:
(Start: 81 @47150 has 6 MA's), (Start: 83 @47159 has 7 MA's), (112, 47237), (138, 47324), (151, 47354), (163, 47396), (177, 47456), (207, 47531),

Gene: Lilizi_87 Start: 51867, Stop: 52229, Start Num: 89
Candidate Starts for Lilizi_87:
(Start: 79 @51840 has 17 MA's), (Start: 89 @51867 has 107 MA's), (157, 52080), (177, 52164), (181, 52176), (186, 52182), (198, 52218),

Gene: Lilpickle_85 Start: 51755, Stop: 52117, Start Num: 89
Candidate Starts for Lilpickle_85:
(Start: 79 @51728 has 17 MA's), (Start: 89 @51755 has 107 MA's), (157, 51968), (177, 52052), (181, 52064), (186, 52070), (198, 52106),

Gene: LimaBean_36 Start: 25100, Stop: 25426, Start Num: 101
Candidate Starts for LimaBean_36:
(Start: 101 @25100 has 57 MA's), (172, 25331), (179, 25367), (181, 25373),

Gene: LitninMcQueen_97 Start: 51856, Stop: 52233, Start Num: 97
Candidate Starts for LitninMcQueen_97:
(68, 51772), (Start: 97 @51856 has 9 MA's), (103, 51868), (133, 51985), (145, 51997), (151, 52018), (163, 52069), (169, 52093), (184, 52147), (186, 52150), (191, 52165), (196, 52177), (209, 52210),

Gene: Lizalica_34 Start: 25001, Stop: 25444, Start Num: 95
Candidate Starts for Lizalica_34:
(30, 24788), (Start: 95 @25001 has 51 MA's), (126, 25100), (169, 25253), (172, 25262), (181, 25304), (184, 25310), (222, 25424),

Gene: London_35 Start: 26877, Stop: 27227, Start Num: 95
Candidate Starts for London_35:
(67, 26808), (Start: 95 @26877 has 51 MA's), (106, 26922), (126, 26961), (140, 27015), (169, 27114), (172, 27123), (181, 27165),

Gene: Loviatar_67 Start: 27664, Stop: 27990, Start Num: 101

Candidate Starts for Loviatar_67:

(2, 27031), (8, 27151), (10, 27169), (16, 27205), (19, 27274), (Start: 101 @27664 has 57 MA's), (141, 27790), (156, 27832), (172, 27895), (176, 27916), (179, 27931), (181, 27937),

Gene: Lynlen_37 Start: 25644, Stop: 25970, Start Num: 101

Candidate Starts for Lynlen_37:

(Start: 101 @25644 has 57 MA's), (140, 25767), (176, 25896), (179, 25911),

Gene: MISSy_87 Start: 52261, Stop: 52623, Start Num: 89

Candidate Starts for MISSy_87:

(Start: 79 @52234 has 17 MA's), (Start: 89 @52261 has 107 MA's), (157, 52474), (177, 52558), (181, 52570), (186, 52576), (198, 52612),

Gene: MPhalcon_87 Start: 52254, Stop: 52616, Start Num: 89

Candidate Starts for MPhalcon_87:

(Start: 79 @52227 has 17 MA's), (Start: 89 @52254 has 107 MA's), (157, 52467), (177, 52551), (181, 52563), (186, 52569), (198, 52605),

Gene: MaGuCo_35 Start: 25925, Stop: 26281, Start Num: 123

Candidate Starts for MaGuCo_35:

(Start: 123 @25925 has 1 MA's), (172, 26099), (181, 26141), (184, 26147),

Gene: Mabodamaca_44 Start: 28805, Stop: 29152, Start Num: 95

Candidate Starts for Mabodamaca_44:

(Start: 95 @28805 has 51 MA's), (165, 29027), (172, 29054), (181, 29096),

Gene: MadamMonkfish_86 Start: 51482, Stop: 51844, Start Num: 89

Candidate Starts for MadamMonkfish_86:

(Start: 79 @51455 has 17 MA's), (Start: 89 @51482 has 107 MA's), (157, 51695), (177, 51779), (181, 51791), (186, 51797), (198, 51833),

Gene: Magsby_49 Start: 34533, Stop: 34925, Start Num: 80

Candidate Starts for Magsby_49:

(Start: 80 @34533 has 53 MA's), (186, 34854),

Gene: Mahdia_59 Start: 41385, Stop: 41786, Start Num: 98

Candidate Starts for Mahdia_59:

(Start: 98 @41385 has 7 MA's), (115, 41445), (132, 41508), (151, 41562), (158, 41598), (182, 41685), (186, 41691), (195, 41718), (213, 41757), (219, 41775),

Gene: Manda_88 Start: 53750, Stop: 54112, Start Num: 88

Candidate Starts for Manda_88:

(Start: 78 @53729 has 3 MA's), (Start: 88 @53750 has 9 MA's), (157, 53963), (177, 54047), (181, 54059), (186, 54065), (198, 54101),

Gene: Mao1_71 Start: 51034, Stop: 51408, Start Num: 104

Candidate Starts for Mao1_71:

(Start: 80 @50980 has 53 MA's), (104, 51034), (122, 51085), (131, 51124), (133, 51130), (151, 51199), (162, 51241), (167, 51265), (169, 51274), (170, 51277), (186, 51328), (190, 51343), (194, 51352),

Gene: Marshmallow_84 Start: 53031, Stop: 53393, Start Num: 89

Candidate Starts for Marshmallow_84:

(Start: 79 @53004 has 17 MA's), (Start: 89 @53031 has 107 MA's), (157, 53244), (177, 53328), (181, 53340), (186, 53346), (198, 53382),

Gene: MaryV_85 Start: 52221, Stop: 52625, Start Num: 85

Candidate Starts for MaryV_85:

(54, 52140), (Start: 85 @52221 has 5 MA's), (117, 52308), (129, 52356), (137, 52380), (143, 52401), (146, 52407), (156, 52416), (184, 52518), (189, 52530), (207, 52578), (210, 52584), (216, 52602),

Gene: Mask_67 Start: 53263, Stop: 53691, Start Num: 80

Candidate Starts for Mask_67:

(Start: 80 @53263 has 53 MA's), (104, 53317), (122, 53368), (131, 53407), (133, 53413), (151, 53482), (167, 53548), (168, 53551), (170, 53560), (186, 53611), (190, 53626), (194, 53635),

Gene: Maureen_37 Start: 26991, Stop: 27434, Start Num: 95

Candidate Starts for Maureen_37:

(Start: 95 @26991 has 51 MA's), (Start: 123 @27078 has 1 MA's), (169, 27243), (172, 27252), (180, 27291), (181, 27294), (184, 27300),

Gene: Maxxinista_88 Start: 52127, Stop: 52489, Start Num: 89

Candidate Starts for Maxxinista_88:

(Start: 79 @52100 has 17 MA's), (Start: 89 @52127 has 107 MA's), (157, 52340), (177, 52424), (181, 52436), (186, 52442), (198, 52478),

Gene: Melville_53 Start: 34517, Stop: 34909, Start Num: 80

Candidate Starts for Melville_53:

(Start: 80 @34517 has 53 MA's), (186, 34838),

Gene: Mindy_85 Start: 51283, Stop: 51666, Start Num: 78

Candidate Starts for Mindy_85:

(Start: 78 @51283 has 3 MA's), (Start: 88 @51304 has 9 MA's), (157, 51517), (177, 51601), (181, 51613), (186, 51619), (198, 51655),

Gene: MiniMommy_42 Start: 26738, Stop: 27181, Start Num: 94

Candidate Starts for MiniMommy_42:

(Start: 94 @26738 has 2 MA's), (126, 26837), (181, 27041), (193, 27071),

Gene: Miniwave_81 Start: 51799, Stop: 52161, Start Num: 89

Candidate Starts for Miniwave_81:

(Start: 79 @51772 has 17 MA's), (Start: 89 @51799 has 107 MA's), (157, 52012), (177, 52096), (181, 52108), (186, 52114), (198, 52150),

Gene: Miryou_70 Start: 50262, Stop: 50627, Start Num: 80

Candidate Starts for Miryou_70:

(Start: 40 @50172 has 2 MA's), (53, 50199), (55, 50202), (Start: 80 @50262 has 53 MA's), (Start: 87 @50274 has 2 MA's), (122, 50364), (131, 50403), (140, 50427), (150, 50454), (170, 50523), (171, 50526), (181, 50568), (186, 50574), (188, 50580), (201, 50616),

Gene: Misfit_87 Start: 53273, Stop: 53635, Start Num: 89

Candidate Starts for Misfit_87:

(Start: 79 @53246 has 17 MA's), (Start: 89 @53273 has 107 MA's), (157, 53486), (177, 53570), (181, 53582), (186, 53588), (198, 53624),

Gene: MissSwiss_35 Start: 24190, Stop: 24540, Start Num: 95

Candidate Starts for MissSwiss_35:

(31, 23998), (33, 24022), (41, 24052), (60, 24094), (Start: 95 @24190 has 51 MA's), (126, 24274), (172, 24436), (181, 24478), (184, 24484),

Gene: Moldemort_89 Start: 52218, Stop: 52580, Start Num: 89

Candidate Starts for Moldemort_89:

(74, 52185), (Start: 89 @52218 has 107 MA's), (157, 52431), (162, 52446), (177, 52515), (181, 52527), (186, 52533), (198, 52569),

Gene: Mollymur_72 Start: 52998, Stop: 52633, Start Num: 97

Candidate Starts for Mollymur_72:

(73, 53064), (86, 53028), (Start: 97 @52998 has 9 MA's), (184, 52701), (186, 52698),

Gene: Morrissey_62 Start: 43281, Stop: 43685, Start Num: 98

Candidate Starts for Morrissey_62:

(50, 43155), (Start: 98 @43281 has 7 MA's), (113, 43338), (158, 43494), (167, 43524), (182, 43581), (184, 43584), (186, 43587), (195, 43614), (198, 43623), (213, 43653),

Gene: Mosby_82 Start: 51556, Stop: 51918, Start Num: 89

Candidate Starts for Mosby_82:

(Start: 79 @51529 has 17 MA's), (Start: 89 @51556 has 107 MA's), (157, 51769), (177, 51853), (181, 51865), (186, 51871), (198, 51907),

Gene: Moss_42 Start: 24158, Stop: 24592, Start Num: 95

Candidate Starts for Moss_42:

(57, 24050), (62, 24062), (71, 24086), (Start: 95 @24158 has 51 MA's), (180, 24458),

Gene: MrMagoo_81 Start: 49270, Stop: 49671, Start Num: 84

Candidate Starts for MrMagoo_81:

(Start: 84 @49270 has 7 MA's), (131, 49414), (163, 49507), (177, 49567), (198, 49621),

Gene: Mudpuppy_35 Start: 24965, Stop: 25408, Start Num: 95

Candidate Starts for Mudpuppy_35:

(30, 24752), (Start: 95 @24965 has 51 MA's), (126, 25064), (169, 25217), (181, 25268),

Gene: Murica_89 Start: 53202, Stop: 53564, Start Num: 89

Candidate Starts for Murica_89:

(Start: 79 @53175 has 17 MA's), (Start: 89 @53202 has 107 MA's), (157, 53415), (177, 53499), (181, 53511), (186, 53517), (198, 53553),

Gene: Murphy_86 Start: 52639, Stop: 53001, Start Num: 89

Candidate Starts for Murphy_86:

(Start: 79 @52612 has 17 MA's), (Start: 89 @52639 has 107 MA's), (157, 52852), (177, 52936), (181, 52948), (186, 52954), (198, 52990),

Gene: Myrale_86 Start: 52762, Stop: 53124, Start Num: 89

Candidate Starts for Myrale_86:

(74, 52729), (Start: 89 @52762 has 107 MA's), (157, 52975), (177, 53059), (181, 53071), (186, 53077), (198, 53113),

Gene: Myrna_199 Start: 116281, Stop: 116649, Start Num: 89

Candidate Starts for Myrna_199:

(34, 116131), (39, 116149), (Start: 76 @116245 has 2 MA's), (Start: 89 @116281 has 107 MA's), (142, 116458), (152, 116476), (173, 116560), (186, 116596),

Gene: Nala_88 Start: 52763, Stop: 53125, Start Num: 89

Candidate Starts for Nala_88:

(Start: 79 @52736 has 17 MA's), (Start: 89 @52763 has 107 MA's), (157, 52976), (177, 53060), (181, 53072), (186, 53078), (198, 53114),

Gene: Nanosmite_76 Start: 48317, Stop: 48718, Start Num: 84

Candidate Starts for Nanosmite_76:

(Start: 84 @48317 has 7 MA's), (138, 48482), (163, 48554), (177, 48614), (190, 48647), (198, 48668),

Gene: NelitzaMV_84 Start: 51845, Stop: 52207, Start Num: 89

Candidate Starts for NelitzaMV_84:

(Start: 79 @51818 has 17 MA's), (Start: 89 @51845 has 107 MA's), (157, 52058), (177, 52142), (181, 52154), (186, 52160), (198, 52196),

Gene: Nenae_54 Start: 35786, Stop: 36178, Start Num: 80

Candidate Starts for Nenae_54:

(32, 35663), (38, 35684), (47, 35711), (Start: 80 @35786 has 53 MA's), (186, 36107),

Gene: Nesbitt_39 Start: 26358, Stop: 26897, Start Num: 77

Candidate Starts for Nesbitt_39:

(46, 26283), (Start: 77 @26358 has 4 MA's), (102, 26427), (121, 26493), (131, 26541), (154, 26601), (157, 26613), (169, 26661), (171, 26667), (176, 26691), (181, 26712), (190, 26736), (202, 26769), (223, 26841), (227, 26877),

Gene: Nicky22_38 Start: 26183, Stop: 26509, Start Num: 101

Candidate Starts for Nicky22_38:

(Start: 101 @26183 has 57 MA's), (176, 26435), (179, 26450),

Gene: Nimrod_87 Start: 53466, Stop: 53828, Start Num: 89

Candidate Starts for Nimrod_87:

(Start: 79 @53439 has 17 MA's), (Start: 89 @53466 has 107 MA's), (157, 53679), (177, 53763), (181, 53775), (186, 53781), (198, 53817),

Gene: Niobe_35 Start: 26862, Stop: 27212, Start Num: 95

Candidate Starts for Niobe_35:

(Start: 95 @26862 has 51 MA's), (106, 26907), (126, 26946), (140, 27000), (169, 27099), (181, 27150),

Gene: Nitro_36 Start: 26582, Stop: 26929, Start Num: 95

Candidate Starts for Nitro_36:

(Start: 95 @26582 has 51 MA's), (106, 26627), (126, 26666), (140, 26720), (172, 26828), (181, 26870),

Gene: NoSleep_87 Start: 52100, Stop: 52462, Start Num: 89

Candidate Starts for NoSleep_87:

(Start: 79 @52073 has 17 MA's), (Start: 89 @52100 has 107 MA's), (157, 52313), (177, 52397), (181, 52409), (186, 52415), (198, 52451),

Gene: ObiToo_40 Start: 26129, Stop: 26491, Start Num: 95

Candidate Starts for ObiToo_40:

(Start: 95 @26129 has 51 MA's), (140, 26267), (172, 26375), (181, 26417),

Gene: OkiRoe_66 Start: 47934, Stop: 48299, Start Num: 80

Candidate Starts for OkiRoe_66:

(Start: 40 @47844 has 2 MA's), (53, 47871), (55, 47874), (Start: 80 @47934 has 53 MA's), (Start: 87 @47946 has 2 MA's), (122, 48036), (131, 48075), (140, 48099), (150, 48126), (170, 48195), (171, 48198), (186, 48246), (188, 48252), (201, 48288),

Gene: Omnicron_69 Start: 48055, Stop: 48420, Start Num: 80

Candidate Starts for Omnicron_69:

(68, 48019), (Start: 80 @48055 has 53 MA's), (Start: 87 @48067 has 2 MA's), (122, 48157), (131, 48196), (140, 48220), (150, 48247), (170, 48316), (171, 48319), (181, 48361), (186, 48367), (188, 48373), (192, 48385), (203, 48412),

Gene: OrionPax_85 Start: 51851, Stop: 52213, Start Num: 89

Candidate Starts for OrionPax_85:

(Start: 79 @51824 has 17 MA's), (Start: 89 @51851 has 107 MA's), (157, 52064), (177, 52148), (181, 52160), (186, 52166), (198, 52202),

Gene: Panchino_47 Start: 35421, Stop: 35813, Start Num: 80

Candidate Starts for Panchino_47:

(32, 35298), (38, 35319), (47, 35346), (Start: 80 @35421 has 53 MA's), (186, 35742),

Gene: Paola_65 Start: 47507, Stop: 47872, Start Num: 80

Candidate Starts for Paola_65:

(Start: 40 @47417 has 2 MA's), (53, 47444), (55, 47447), (Start: 80 @47507 has 53 MA's), (Start: 87 @47519 has 2 MA's), (122, 47609), (131, 47648), (140, 47672), (150, 47699), (170, 47768), (171, 47771), (186, 47819), (188, 47825), (201, 47861),

Gene: Paperbeatsrock_85 Start: 52477, Stop: 52839, Start Num: 89

Candidate Starts for Paperbeatsrock_85:

(Start: 79 @52450 has 17 MA's), (Start: 89 @52477 has 107 MA's), (157, 52690), (177, 52774), (181, 52786), (186, 52792), (198, 52828),

Gene: Parmesanjohn_49 Start: 34536, Stop: 34928, Start Num: 80

Candidate Starts for Parmesanjohn_49:

(Start: 80 @34536 has 53 MA's), (186, 34857),

Gene: Pat3_84 Start: 50872, Stop: 51234, Start Num: 89

Candidate Starts for Pat3_84:

(74, 50839), (Start: 89 @50872 has 107 MA's), (157, 51085), (162, 51100), (177, 51169), (181, 51181), (186, 51187), (198, 51223),

Gene: Peas_64 Start: 41595, Stop: 41996, Start Num: 79

Candidate Starts for Peas_64:

(Start: 79 @41595 has 17 MA's), (135, 41745),

Gene: PegLeg_70 Start: 46420, Stop: 46839, Start Num: 83

Candidate Starts for PegLeg_70:

(Start: 81 @46411 has 6 MA's), (Start: 83 @46420 has 7 MA's), (112, 46498), (138, 46585), (151, 46615), (163, 46657), (177, 46717), (207, 46792),

Gene: PeggyLeg03_63 Start: 40587, Stop: 40976, Start Num: 79
Candidate Starts for PeggyLeg03_63:
(Start: 79 @40587 has 17 MA's), (135, 40737),

Gene: Percival_46 Start: 28994, Stop: 29350, Start Num: 95
Candidate Starts for Percival_46:
(Start: 95 @28994 has 51 MA's), (105, 29039), (129, 29096), (181, 29285), (197, 29327),

Gene: Petra64142_90 Start: 53696, Stop: 54058, Start Num: 89
Candidate Starts for Petra64142_90:
(Start: 79 @53669 has 17 MA's), (Start: 89 @53696 has 107 MA's), (157, 53909), (177, 53993), (181, 54005), (186, 54011), (198, 54047),

Gene: Phabba_210 Start: 116249, Stop: 116617, Start Num: 89
Candidate Starts for Phabba_210:
(39, 116117), (Start: 76 @116213 has 2 MA's), (Start: 89 @116249 has 107 MA's), (142, 116426), (152, 116444), (186, 116564), (188, 116570),

Gene: Phaja_84 Start: 52303, Stop: 52665, Start Num: 89
Candidate Starts for Phaja_84:
(Start: 79 @52276 has 17 MA's), (Start: 89 @52303 has 107 MA's), (157, 52516), (177, 52600), (181, 52612), (186, 52618), (198, 52654),

Gene: PhancyPhin_54 Start: 35780, Stop: 36172, Start Num: 80
Candidate Starts for PhancyPhin_54:
(32, 35657), (38, 35678), (47, 35705), (Start: 80 @35780 has 53 MA's), (186, 36101),

Gene: Pharsalus_83 Start: 52277, Stop: 52639, Start Num: 89
Candidate Starts for Pharsalus_83:
(Start: 79 @52250 has 17 MA's), (Start: 89 @52277 has 107 MA's), (157, 52490), (177, 52574), (181, 52586), (186, 52592), (198, 52628),

Gene: PhatBacter_90 Start: 53249, Stop: 53611, Start Num: 89
Candidate Starts for PhatBacter_90:
(Start: 79 @53222 has 17 MA's), (Start: 89 @53249 has 107 MA's), (157, 53462), (177, 53546), (181, 53558), (186, 53564), (198, 53600),

Gene: Phaux_88 Start: 53244, Stop: 53606, Start Num: 89
Candidate Starts for Phaux_88:
(Start: 79 @53217 has 17 MA's), (Start: 89 @53244 has 107 MA's), (157, 53457), (177, 53541), (181, 53553), (186, 53559), (198, 53595),

Gene: Phayonce_51 Start: 37143, Stop: 37571, Start Num: 80
Candidate Starts for Phayonce_51:
(Start: 80 @37143 has 53 MA's), (104, 37197), (122, 37248), (131, 37287), (133, 37293), (151, 37362), (162, 37404), (167, 37428), (169, 37437), (170, 37440), (186, 37491), (190, 37506), (194, 37515),

Gene: Phisb_40 Start: 25777, Stop: 26103, Start Num: 101
Candidate Starts for Phisb_40:
(Start: 101 @25777 has 57 MA's), (136, 25885), (172, 26008), (179, 26044), (181, 26050),

Gene: Phives_38 Start: 27302, Stop: 27745, Start Num: 95

Candidate Starts for Phives_38:

(49, 27194), (52, 27197), (58, 27206), (Start: 95 @27302 has 51 MA's), (169, 27554), (172, 27563), (181, 27605), (192, 27632), (206, 27668),

Gene: Phloss_47 Start: 33943, Stop: 34335, Start Num: 80

Candidate Starts for Phloss_47:

(Start: 80 @33943 has 53 MA's), (186, 34264),

Gene: Phrann_51 Start: 36063, Stop: 36455, Start Num: 80

Candidate Starts for Phrann_51:

(32, 35940), (38, 35961), (47, 35988), (Start: 80 @36063 has 53 MA's), (186, 36384),

Gene: Phrux_83 Start: 51798, Stop: 52160, Start Num: 88

Candidate Starts for Phrux_83:

(Start: 78 @51777 has 3 MA's), (Start: 88 @51798 has 9 MA's), (157, 52011), (177, 52095), (181, 52107), (186, 52113), (198, 52149),

Gene: Pipsqueaks_49 Start: 34513, Stop: 34905, Start Num: 80

Candidate Starts for Pipsqueaks_49:

(Start: 80 @34513 has 53 MA's), (186, 34834),

Gene: Pixelle_36 Start: 26837, Stop: 27184, Start Num: 95

Candidate Starts for Pixelle_36:

(Start: 95 @26837 has 51 MA's), (126, 26921), (172, 27083), (181, 27125),

Gene: Porky_85 Start: 51667, Stop: 52029, Start Num: 89

Candidate Starts for Porky_85:

(Start: 79 @51640 has 17 MA's), (Start: 89 @51667 has 107 MA's), (157, 51880), (177, 51964), (181, 51976), (186, 51982), (198, 52018),

Gene: Powerpuff_37 Start: 26303, Stop: 26746, Start Num: 95

Candidate Starts for Powerpuff_37:

(Start: 95 @26303 has 51 MA's), (169, 26555), (181, 26606),

Gene: Psycho_65 Start: 46183, Stop: 46548, Start Num: 80

Candidate Starts for Psycho_65:

(68, 46147), (Start: 80 @46183 has 53 MA's), (Start: 87 @46195 has 2 MA's), (122, 46285), (131, 46324), (140, 46348), (150, 46375), (169, 46441), (170, 46444), (171, 46447), (181, 46489), (186, 46495), (188, 46501), (192, 46513), (199, 46531), (201, 46537),

Gene: Pucara_59 Start: 40031, Stop: 40420, Start Num: 79

Candidate Starts for Pucara_59:

(Start: 79 @40031 has 17 MA's), (135, 40181),

Gene: Pumpkin_89 Start: 52895, Stop: 53257, Start Num: 89

Candidate Starts for Pumpkin_89:

(Start: 79 @52868 has 17 MA's), (Start: 89 @52895 has 107 MA's), (157, 53108), (177, 53192), (181, 53204), (186, 53210), (198, 53246),

Gene: Pumpkins_58 Start: 26180, Stop: 26539, Start Num: 95

Candidate Starts for Pumpkins_58:

(43, 26060), (Start: 95 @26180 has 51 MA's), (140, 26318), (181, 26468),

Gene: Puppies_60 Start: 41273, Stop: 41683, Start Num: 98
Candidate Starts for Puppies_60:
(Start: 98 @41273 has 7 MA's), (104, 41294), (144, 41426), (155, 41468), (157, 41477), (182, 41582),
(186, 41588),

Gene: Purgamenstris_54 Start: 35784, Stop: 36176, Start Num: 80
Candidate Starts for Purgamenstris_54:
(32, 35661), (38, 35682), (47, 35709), (Start: 80 @35784 has 53 MA's), (186, 36105),

Gene: QMacho_39 Start: 26201, Stop: 26527, Start Num: 101
Candidate Starts for QMacho_39:
(Start: 101 @26201 has 57 MA's), (176, 26453), (179, 26468),

Gene: Quallification_87 Start: 52885, Stop: 53247, Start Num: 89
Candidate Starts for Quallification_87:
(Start: 79 @52858 has 17 MA's), (Start: 89 @52885 has 107 MA's), (157, 53098), (177, 53182), (181,
53194), (186, 53200), (198, 53236),

Gene: Quenya_36 Start: 25890, Stop: 26219, Start Num: 101
Candidate Starts for Quenya_36:
(12, 25413), (21, 25524), (23, 25566), (Start: 101 @25890 has 57 MA's), (130, 25977), (140, 26013),
(141, 26016), (176, 26142), (179, 26157), (181, 26163),

Gene: REQ3_19 Start: 8920, Stop: 9282, Start Num: 97
Candidate Starts for REQ3_19:
(Start: 97 @8920 has 9 MA's), (108, 8965), (145, 9061), (147, 9067), (148, 9073), (169, 9157), (186,
9211), (209, 9262), (215, 9274),

Gene: Rakim_87 Start: 52214, Stop: 52576, Start Num: 89
Candidate Starts for Rakim_87:
(74, 52181), (Start: 89 @52214 has 107 MA's), (157, 52427), (177, 52511), (181, 52523), (186,
52529), (198, 52565),

Gene: Rando14_68 Start: 46839, Stop: 47204, Start Num: 80
Candidate Starts for Rando14_68:
(68, 46803), (Start: 80 @46839 has 53 MA's), (Start: 87 @46851 has 2 MA's), (122, 46941), (131,
46980), (138, 47001), (140, 47004), (150, 47031), (170, 47100), (171, 47103), (181, 47145), (186,
47151), (188, 47157), (192, 47169), (203, 47196),

Gene: Raymond7_48 Start: 35572, Stop: 35964, Start Num: 80
Candidate Starts for Raymond7_48:
(32, 35449), (38, 35470), (47, 35497), (Start: 80 @35572 has 53 MA's), (186, 35893),

Gene: Redi_54 Start: 35783, Stop: 36175, Start Num: 80
Candidate Starts for Redi_54:
(32, 35660), (38, 35681), (47, 35708), (Start: 80 @35783 has 53 MA's), (186, 36104),

Gene: Reedo_35 Start: 24148, Stop: 24591, Start Num: 95
Candidate Starts for Reedo_35:
(Start: 95 @24148 has 51 MA's), (106, 24193), (126, 24247), (169, 24400), (172, 24409), (181,
24451), (184, 24457), (192, 24478),

Gene: Reindeer_73 Start: 47812, Stop: 48231, Start Num: 83

Candidate Starts for Reindeer_73:

(Start: 81 @47803 has 6 MA's), (Start: 83 @47812 has 7 MA's), (130, 47950), (157, 48025), (163, 48049), (177, 48109), (207, 48184),

Gene: Rey_78 Start: 48943, Stop: 49344, Start Num: 84

Candidate Starts for Rey_78:

(Start: 84 @48943 has 7 MA's), (131, 49087), (163, 49180), (177, 49240), (198, 49294),

Gene: Reyja_59 Start: 38515, Stop: 38931, Start Num: 79

Candidate Starts for Reyja_59:

(13, 38104), (15, 38113), (20, 38194), (36, 38413), (Start: 79 @38515 has 17 MA's), (167, 38767), (171, 38782), (186, 38830),

Gene: Rimmer_86 Start: 52254, Stop: 52616, Start Num: 89

Candidate Starts for Rimmer_86:

(Start: 89 @52254 has 107 MA's), (157, 52467), (162, 52482), (177, 52551), (181, 52563), (186, 52569), (198, 52605),

Gene: RiverMonster_86 Start: 52415, Stop: 52777, Start Num: 89

Candidate Starts for RiverMonster_86:

(Start: 79 @52388 has 17 MA's), (Start: 89 @52415 has 107 MA's), (157, 52628), (177, 52712), (181, 52724), (186, 52730), (198, 52766),

Gene: Rollins_34 Start: 23702, Stop: 24043, Start Num: 101

Candidate Starts for Rollins_34:

(Start: 101 @23702 has 57 MA's), (131, 23795), (181, 23975),

Gene: Rona_35 Start: 26210, Stop: 26542, Start Num: 101

Candidate Starts for Rona_35:

(3, 25613), (11, 25721), (Start: 101 @26210 has 57 MA's), (136, 26321), (138, 26333), (141, 26339), (157, 26387), (172, 26444), (179, 26480), (181, 26486),

Gene: RootBeer_54 Start: 36912, Stop: 37301, Start Num: 79

Candidate Starts for RootBeer_54:

(Start: 79 @36912 has 17 MA's), (135, 37062),

Gene: Rubeelu_52 Start: 35124, Stop: 35516, Start Num: 80

Candidate Starts for Rubeelu_52:

(37, 35016), (Start: 80 @35124 has 53 MA's), (186, 35445),

Gene: Saints25_85 Start: 51828, Stop: 52190, Start Num: 89

Candidate Starts for Saints25_85:

(Start: 79 @51801 has 17 MA's), (Start: 89 @51828 has 107 MA's), (157, 52041), (177, 52125), (181, 52137), (186, 52143), (198, 52179),

Gene: Samy_60 Start: 37282, Stop: 37698, Start Num: 92

Candidate Starts for Samy_60:

(Start: 92 @37282 has 1 MA's), (128, 37390), (134, 37414), (171, 37534), (172, 37537), (174, 37549), (180, 37576), (184, 37585), (192, 37606), (198, 37624),

Gene: SanaSana_40 Start: 27314, Stop: 27640, Start Num: 101

Candidate Starts for SanaSana_40:

(Start: 101 @27314 has 57 MA's), (141, 27440), (172, 27545), (176, 27566), (179, 27581), (181, 27587),

Gene: SansAfet_38 Start: 25631, Stop: 25957, Start Num: 101

Candidate Starts for SansAfet_38:

(Start: 101 @25631 has 57 MA's), (172, 25862), (179, 25898), (181, 25904),

Gene: Santhid_54 Start: 36000, Stop: 36518, Start Num: 79

Candidate Starts for Santhid_54:

(Start: 79 @36000 has 17 MA's), (186, 36315), (223, 36435), (226, 36468),

Gene: SarBear_37 Start: 25498, Stop: 25824, Start Num: 101

Candidate Starts for SarBear_37:

(Start: 101 @25498 has 57 MA's), (176, 25750), (179, 25765),

Gene: Sashimi_87 Start: 47693, Stop: 48073, Start Num: 79

Candidate Starts for Sashimi_87:

(63, 47648), (Start: 79 @47693 has 17 MA's), (122, 47795), (135, 47843), (149, 47885), (186, 48008),

Gene: Sassay_81 Start: 50518, Stop: 50880, Start Num: 89

Candidate Starts for Sassay_81:

(Start: 79 @50491 has 17 MA's), (Start: 89 @50518 has 107 MA's), (157, 50731), (177, 50815), (181, 50827), (186, 50833), (198, 50869),

Gene: Schmidt_51 Start: 34772, Stop: 35146, Start Num: 99

Candidate Starts for Schmidt_51:

(Start: 99 @34772 has 5 MA's), (103, 34784), (133, 34901), (145, 34928), (147, 34934), (171, 35030), (181, 35072), (191, 35096),

Gene: Schnauzer_50 Start: 34536, Stop: 34928, Start Num: 80

Candidate Starts for Schnauzer_50:

(Start: 80 @34536 has 53 MA's), (186, 34857),

Gene: ScoobyDoobyDoo_198 Start: 114464, Stop: 114832, Start Num: 89

Candidate Starts for ScoobyDoobyDoo_198:

(27, 114260), (44, 114353), (56, 114377), (Start: 76 @114428 has 2 MA's), (Start: 89 @114464 has 107 MA's), (124, 114575), (141, 114635), (152, 114659), (167, 114716), (169, 114725), (171, 114731), (186, 114779), (188, 114785),

Gene: ShakeltOph_42 Start: 26737, Stop: 27180, Start Num: 94

Candidate Starts for ShakeltOph_42:

(Start: 94 @26737 has 2 MA's), (126, 26836), (181, 27040), (193, 27070),

Gene: ShamWow_86 Start: 52698, Stop: 53060, Start Num: 88

Candidate Starts for ShamWow_86:

(Start: 78 @52677 has 3 MA's), (Start: 88 @52698 has 9 MA's), (157, 52911), (177, 52995), (181, 53007), (186, 53013), (198, 53049),

Gene: Shambre1_63 Start: 40417, Stop: 40782, Start Num: 87

Candidate Starts for Shambre1_63:

(Start: 87 @40417 has 2 MA's), (151, 40609), (186, 40729),

Gene: Sharkboy_36 Start: 26309, Stop: 26641, Start Num: 101

Candidate Starts for Sharkboy_36:

(Start: 101 @26309 has 57 MA's), (136, 26420), (138, 26432), (141, 26438), (157, 26486), (172, 26543), (181, 26585),

Gene: ShereKhan_84 Start: 52810, Stop: 53172, Start Num: 89

Candidate Starts for ShereKhan_84:

(Start: 79 @52783 has 17 MA's), (Start: 89 @52810 has 107 MA's), (157, 53023), (177, 53107), (181, 53119), (186, 53125), (198, 53161),

Gene: ShrimpFriedEgg_54 Start: 35783, Stop: 36175, Start Num: 80

Candidate Starts for ShrimpFriedEgg_54:

(32, 35660), (38, 35681), (47, 35708), (Start: 80 @35783 has 53 MA's), (186, 36104),

Gene: Silvafighter_50 Start: 34509, Stop: 34901, Start Num: 80

Candidate Starts for Silvafighter_50:

(Start: 80 @34509 has 53 MA's), (186, 34830),

Gene: Simpliphy_85 Start: 51818, Stop: 52180, Start Num: 89

Candidate Starts for Simpliphy_85:

(Start: 79 @51791 has 17 MA's), (Start: 89 @51818 has 107 MA's), (157, 52031), (177, 52115), (181, 52127), (186, 52133), (198, 52169),

Gene: Simpson_37 Start: 25218, Stop: 25661, Start Num: 95

Candidate Starts for Simpson_37:

(Start: 95 @25218 has 51 MA's), (126, 25317), (169, 25470), (181, 25521),

Gene: SirDuracell_86 Start: 51469, Stop: 51831, Start Num: 89

Candidate Starts for SirDuracell_86:

(75, 51442), (Start: 89 @51469 has 107 MA's), (157, 51682), (162, 51697), (177, 51766), (181, 51778), (186, 51784), (198, 51820),

Gene: Skinny_74 Start: 47579, Stop: 48007, Start Num: 81

Candidate Starts for Skinny_74:

(Start: 81 @47579 has 6 MA's), (Start: 83 @47588 has 7 MA's), (112, 47666), (138, 47753), (151, 47783), (163, 47825), (177, 47885), (207, 47960),

Gene: Skylord_34 Start: 23633, Stop: 23974, Start Num: 101

Candidate Starts for Skylord_34:

(Start: 101 @23633 has 57 MA's), (131, 23726), (181, 23906),

Gene: Slay_38 Start: 26179, Stop: 26505, Start Num: 101

Candidate Starts for Slay_38:

(Start: 101 @26179 has 57 MA's), (176, 26431), (179, 26446),

Gene: SlimJimmy_71 Start: 47135, Stop: 47563, Start Num: 81

Candidate Starts for SlimJimmy_71:

(Start: 81 @47135 has 6 MA's), (Start: 83 @47144 has 7 MA's), (112, 47222), (138, 47309), (151, 47339), (163, 47381), (177, 47441), (207, 47516),

Gene: Smurph_49 Start: 34536, Stop: 34928, Start Num: 80

Candidate Starts for Smurph_49:

(Start: 80 @34536 has 53 MA's), (186, 34857),

Gene: Snek_35 Start: 24475, Stop: 24915, Start Num: 95

Candidate Starts for Snek_35:

(31, 24304), (33, 24328), (41, 24358), (60, 24400), (Start: 95 @24475 has 51 MA's), (106, 24520), (169, 24727), (181, 24778), (202, 24835),

Gene: Snekmaggedon_48 Start: 34075, Stop: 34467, Start Num: 80

Candidate Starts for Snekmaggedon_48:

(32, 33952), (38, 33973), (47, 34000), (Start: 80 @34075 has 53 MA's), (186, 34396),

Gene: SoSeph_66 Start: 47886, Stop: 48251, Start Num: 80

Candidate Starts for SoSeph_66:

(Start: 40 @47796 has 2 MA's), (53, 47823), (55, 47826), (Start: 80 @47886 has 53 MA's), (Start: 87 @47898 has 2 MA's), (122, 47988), (131, 48027), (140, 48051), (150, 48078), (170, 48147), (171, 48150), (181, 48192), (186, 48198), (188, 48204), (201, 48240),

Gene: Soondubu_33 Start: 27354, Stop: 27797, Start Num: 95

Candidate Starts for Soondubu_33:

(14, 26925), (31, 27192), (41, 27246), (Start: 95 @27354 has 51 MA's), (172, 27615), (181, 27657), (184, 27663), (190, 27681), (195, 27693),

Gene: SophKB_83 Start: 51496, Stop: 51858, Start Num: 89

Candidate Starts for SophKB_83:

(Start: 79 @51469 has 17 MA's), (Start: 89 @51496 has 107 MA's), (157, 51709), (177, 51793), (181, 51805), (186, 51811), (198, 51847),

Gene: Sotrice96_87 Start: 52362, Stop: 52724, Start Num: 89

Candidate Starts for Sotrice96_87:

(74, 52329), (Start: 89 @52362 has 107 MA's), (157, 52575), (162, 52590), (177, 52659), (181, 52671), (186, 52677), (198, 52713),

Gene: SpeedDemon_740 Start: 54721, Stop: 54356, Start Num: 97

Candidate Starts for SpeedDemon_740:

(86, 54751), (Start: 97 @54721 has 9 MA's), (184, 54424), (211, 54376),

Gene: SpongeBob_48 Start: 34075, Stop: 34467, Start Num: 80

Candidate Starts for SpongeBob_48:

(32, 33952), (38, 33973), (47, 34000), (Start: 80 @34075 has 53 MA's), (186, 34396),

Gene: Stank_90 Start: 52757, Stop: 53119, Start Num: 89

Candidate Starts for Stank_90:

(Start: 79 @52730 has 17 MA's), (Start: 89 @52757 has 107 MA's), (157, 52970), (177, 53054), (181, 53066), (186, 53072), (198, 53108),

Gene: Stark_87 Start: 52298, Stop: 52660, Start Num: 89

Candidate Starts for Stark_87:

(Start: 79 @52271 has 17 MA's), (Start: 89 @52298 has 107 MA's), (157, 52511), (177, 52595), (181, 52607), (186, 52613), (198, 52649),

Gene: StellaBean_82 Start: 52001, Stop: 52384, Start Num: 78

Candidate Starts for StellaBean_82:

(Start: 78 @52001 has 3 MA's), (Start: 88 @52022 has 9 MA's), (157, 52235), (177, 52319), (181, 52331), (186, 52337), (198, 52373),

Gene: StolenFromERC_89 Start: 52402, Stop: 52764, Start Num: 89
Candidate Starts for StolenFromERC_89:
(74, 52369), (Start: 89 @52402 has 107 MA's), (157, 52615), (177, 52699), (181, 52711), (186, 52717), (198, 52753),

Gene: Stoor_38 Start: 26983, Stop: 27309, Start Num: 101
Candidate Starts for Stoor_38:
(8, 26470), (10, 26488), (16, 26524), (19, 26593), (Start: 101 @26983 has 57 MA's), (138, 27103), (141, 27109), (156, 27151), (172, 27214), (176, 27235), (179, 27250), (181, 27256),

Gene: Stromboli_38 Start: 26847, Stop: 27173, Start Num: 101
Candidate Starts for Stromboli_38:
(1, 26094), (8, 26334), (10, 26352), (16, 26388), (19, 26457), (Start: 101 @26847 has 57 MA's), (138, 26967), (141, 26973), (172, 27078), (176, 27099), (179, 27114), (181, 27120),

Gene: SuMoo_46 Start: 28468, Stop: 28815, Start Num: 95
Candidate Starts for SuMoo_46:
(61, 28372), (Start: 92 @28456 has 1 MA's), (Start: 95 @28468 has 51 MA's), (165, 28690), (172, 28717), (181, 28759),

Gene: Sue2_36 Start: 26239, Stop: 26682, Start Num: 95
Candidate Starts for Sue2_36:
(Start: 95 @26239 has 51 MA's), (140, 26392), (176, 26521), (181, 26542), (184, 26548),

Gene: Swervy_38 Start: 25698, Stop: 26024, Start Num: 101
Candidate Starts for Swervy_38:
(Start: 101 @25698 has 57 MA's), (176, 25950), (179, 25965),

Gene: TBrady12_89 Start: 52238, Stop: 52600, Start Num: 89
Candidate Starts for TBrady12_89:
(Start: 79 @52211 has 17 MA's), (Start: 89 @52238 has 107 MA's), (157, 52451), (177, 52535), (181, 52547), (186, 52553), (198, 52589),

Gene: Tallboi_38 Start: 27029, Stop: 27379, Start Num: 95
Candidate Starts for Tallboi_38:
(Start: 40 @26903 has 2 MA's), (Start: 95 @27029 has 51 MA's), (106, 27074), (172, 27275), (181, 27317),

Gene: Tapioca_51 Start: 34502, Stop: 34894, Start Num: 80
Candidate Starts for Tapioca_51:
(Start: 80 @34502 has 53 MA's), (186, 34823),

Gene: Tarkin_85 Start: 52486, Stop: 52848, Start Num: 89
Candidate Starts for Tarkin_85:
(Start: 79 @52459 has 17 MA's), (Start: 89 @52486 has 107 MA's), (157, 52699), (177, 52783), (181, 52795), (186, 52801), (198, 52837),

Gene: Tarzan_57 Start: 37228, Stop: 37659, Start Num: 79
Candidate Starts for Tarzan_57:
(Start: 79 @37228 has 17 MA's), (186, 37543), (205, 37594), (224, 37651),

Gene: Tbone_34 Start: 25013, Stop: 25456, Start Num: 95
Candidate Starts for Tbone_34:

(30, 24791), (Start: 95 @25013 has 51 MA's), (126, 25112), (169, 25265), (181, 25316),

Gene: TeardropMSU_82 Start: 51486, Stop: 51848, Start Num: 89

Candidate Starts for TeardropMSU_82:

(Start: 79 @51459 has 17 MA's), (Start: 89 @51486 has 107 MA's), (157, 51699), (177, 51783), (181, 51795), (186, 51801), (198, 51837),

Gene: Teaspoon_83 Start: 52320, Stop: 52703, Start Num: 78

Candidate Starts for Teaspoon_83:

(Start: 78 @52320 has 3 MA's), (Start: 88 @52341 has 9 MA's), (157, 52554), (177, 52638), (181, 52650), (186, 52656), (198, 52692),

Gene: Terminus_89 Start: 53273, Stop: 53635, Start Num: 89

Candidate Starts for Terminus_89:

(Start: 79 @53246 has 17 MA's), (Start: 89 @53273 has 107 MA's), (157, 53486), (177, 53570), (181, 53582), (186, 53588), (198, 53624),

Gene: TforTroy_37 Start: 26052, Stop: 26408, Start Num: 95

Candidate Starts for TforTroy_37:

(43, 25932), (Start: 95 @26052 has 51 MA's), (181, 26340),

Gene: Thresher_88 Start: 53357, Stop: 53719, Start Num: 89

Candidate Starts for Thresher_88:

(Start: 79 @53330 has 17 MA's), (Start: 89 @53357 has 107 MA's), (157, 53570), (177, 53654), (181, 53666), (186, 53672), (198, 53708),

Gene: Thyatira_68 Start: 49878, Stop: 50243, Start Num: 80

Candidate Starts for Thyatira_68:

(Start: 40 @49788 has 2 MA's), (53, 49815), (55, 49818), (Start: 80 @49878 has 53 MA's), (Start: 87 @49890 has 2 MA's), (122, 49980), (131, 50019), (140, 50043), (150, 50070), (170, 50139), (171, 50142), (181, 50184), (186, 50190), (188, 50196), (201, 50232),

Gene: Tian_35 Start: 26817, Stop: 27164, Start Num: 95

Candidate Starts for Tian_35:

(Start: 95 @26817 has 51 MA's), (126, 26901), (172, 27063), (181, 27105),

Gene: TinaLin_56 Start: 36975, Stop: 37346, Start Num: 100

Candidate Starts for TinaLin_56:

(Start: 99 @36972 has 5 MA's), (Start: 100 @36975 has 1 MA's), (103, 36984), (133, 37101), (171, 37230), (191, 37296),

Gene: TinyDot_60 Start: 38014, Stop: 38394, Start Num: 99

Candidate Starts for TinyDot_60:

(17, 37603), (25, 37699), (Start: 99 @38014 has 5 MA's), (103, 38026), (116, 38077), (127, 38119), (194, 38338), (195, 38341), (211, 38374),

Gene: Tomaszewski_81 Start: 51649, Stop: 52011, Start Num: 89

Candidate Starts for Tomaszewski_81:

(Start: 79 @51622 has 17 MA's), (Start: 89 @51649 has 107 MA's), (157, 51862), (177, 51946), (181, 51958), (186, 51964), (198, 52000),

Gene: Toto_84 Start: 52677, Stop: 53060, Start Num: 78

Candidate Starts for Toto_84:

(Start: 78 @52677 has 3 MA's), (Start: 88 @52698 has 9 MA's), (157, 52911), (177, 52995), (181, 53007), (186, 53013), (198, 53049),

Gene: Traaww1_82 Start: 51784, Stop: 52146, Start Num: 89

Candidate Starts for Traaww1_82:

(74, 51751), (Start: 89 @51784 has 107 MA's), (157, 51997), (162, 52012), (177, 52081), (181, 52093), (186, 52099), (198, 52135),

Gene: Trine_64 Start: 42629, Stop: 43021, Start Num: 99

Candidate Starts for Trine_64:

(22, 42272), (24, 42302), (28, 42380), (Start: 99 @42629 has 5 MA's), (148, 42797), (153, 42815), (167, 42872), (182, 42929), (184, 42932), (186, 42935), (195, 42962),

Gene: TripleJ_65 Start: 39433, Stop: 39810, Start Num: 79

Candidate Starts for TripleJ_65:

(Start: 79 @39433 has 17 MA's), (104, 39487), (114, 39511), (122, 39535), (140, 39598), (141, 39601), (171, 39697), (181, 39739), (194, 39769), (195, 39772), (214, 39802),

Gene: Tuck_39 Start: 27855, Stop: 28298, Start Num: 95

Candidate Starts for Tuck_39:

(Start: 95 @27855 has 51 MA's), (169, 28107), (172, 28116), (181, 28158), (192, 28185), (206, 28221),

Gene: Tuco_87 Start: 53245, Stop: 53607, Start Num: 89

Candidate Starts for Tuco_87:

(Start: 79 @53218 has 17 MA's), (Start: 89 @53245 has 107 MA's), (157, 53458), (177, 53542), (181, 53554), (186, 53560), (198, 53596),

Gene: TukTuk_38 Start: 25769, Stop: 26095, Start Num: 101

Candidate Starts for TukTuk_38:

(Start: 101 @25769 has 57 MA's), (136, 25877), (172, 26000), (179, 26036), (181, 26042),

Gene: Turab_34 Start: 25291, Stop: 25641, Start Num: 95

Candidate Starts for Turab_34:

(31, 25111), (41, 25165), (Start: 95 @25291 has 51 MA's), (106, 25336), (126, 25375), (172, 25537), (181, 25579),

Gene: Tutumahutu_37 Start: 25185, Stop: 25628, Start Num: 95

Candidate Starts for Tutumahutu_37:

(Start: 95 @25185 has 51 MA's), (126, 25284), (169, 25437), (181, 25488),

Gene: Tweety19_35 Start: 24474, Stop: 24914, Start Num: 95

Candidate Starts for Tweety19_35:

(31, 24303), (33, 24327), (41, 24357), (60, 24399), (Start: 95 @24474 has 51 MA's), (106, 24519), (169, 24726), (181, 24777), (202, 24834),

Gene: TyDawg_71 Start: 46671, Stop: 47099, Start Num: 81

Candidate Starts for TyDawg_71:

(Start: 81 @46671 has 6 MA's), (Start: 83 @46680 has 7 MA's), (112, 46758), (138, 46845), (151, 46875), (163, 46917), (177, 46977), (207, 47052),

Gene: Ukulele_81 Start: 51631, Stop: 51993, Start Num: 89

Candidate Starts for Ukulele_81:

(Start: 79 @51604 has 17 MA's), (Start: 89 @51631 has 107 MA's), (157, 51844), (177, 51928), (181, 51940), (186, 51946), (198, 51982),

Gene: Upyo_68 Start: 44581, Stop: 44982, Start Num: 98

Candidate Starts for Upyo_68:

(45, 44440), (Start: 98 @44581 has 7 MA's), (151, 44758), (158, 44794), (159, 44797), (182, 44881), (186, 44887), (195, 44914), (198, 44923), (214, 44959), (217, 44968),

Gene: UtzChips_43 Start: 27442, Stop: 27804, Start Num: 95

Candidate Starts for UtzChips_43:

(65, 27361), (Start: 95 @27442 has 51 MA's), (163, 27658), (181, 27733),

Gene: VResidence_36 Start: 25348, Stop: 25791, Start Num: 95

Candidate Starts for VResidence_36:

(Start: 95 @25348 has 51 MA's), (169, 25600), (172, 25609), (181, 25651), (184, 25657), (193, 25681), (221, 25768),

Gene: Vitas_34 Start: 23642, Stop: 23983, Start Num: 101

Candidate Starts for Vitas_34:

(Start: 101 @23642 has 57 MA's), (131, 23735), (181, 23915),

Gene: VroomVroom_40 Start: 26879, Stop: 27325, Start Num: 94

Candidate Starts for VroomVroom_40:

(48, 26771), (91, 26867), (Start: 94 @26879 has 2 MA's), (126, 26978), (181, 27182), (220, 27275),

Gene: Warda_35 Start: 25189, Stop: 25632, Start Num: 95

Candidate Starts for Warda_35:

(30, 24967), (Start: 95 @25189 has 51 MA's), (126, 25288), (169, 25441), (181, 25492),

Gene: Waterfoul_67 Start: 47948, Stop: 48313, Start Num: 80

Candidate Starts for Waterfoul_67:

(Start: 40 @47858 has 2 MA's), (53, 47885), (55, 47888), (Start: 80 @47948 has 53 MA's), (Start: 87 @47960 has 2 MA's), (122, 48050), (131, 48089), (140, 48113), (150, 48140), (170, 48209), (171, 48212), (181, 48254), (186, 48260), (188, 48266), (201, 48302),

Gene: Widow_60 Start: 41819, Stop: 42229, Start Num: 98

Candidate Starts for Widow_60:

(Start: 98 @41819 has 7 MA's), (144, 41972), (155, 42014), (157, 42023), (182, 42128), (186, 42134),

Gene: Wiggin_88 Start: 52185, Stop: 52547, Start Num: 89

Candidate Starts for Wiggin_88:

(74, 52152), (Start: 89 @52185 has 107 MA's), (157, 52398), (162, 52413), (177, 52482), (181, 52494), (186, 52500), (198, 52536),

Gene: Wildcat_85 Start: 52231, Stop: 52635, Start Num: 85

Candidate Starts for Wildcat_85:

(54, 52150), (Start: 85 @52231 has 5 MA's), (117, 52318), (129, 52366), (137, 52390), (143, 52411), (146, 52417), (156, 52426), (184, 52528), (189, 52540), (207, 52588), (210, 52594), (216, 52612),

Gene: Wildwest_35 Start: 25377, Stop: 25820, Start Num: 95

Candidate Starts for Wildwest_35:

(31, 25194), (33, 25218), (41, 25248), (Start: 95 @25377 has 51 MA's), (169, 25629), (172, 25638), (181, 25680), (184, 25686), (206, 25743), (222, 25800),

Gene: Willez_81 Start: 50518, Stop: 50880, Start Num: 89

Candidate Starts for Willez_81:

(Start: 79 @50491 has 17 MA's), (Start: 89 @50518 has 107 MA's), (157, 50731), (177, 50815), (181, 50827), (186, 50833),

Gene: Xandras_85 Start: 51730, Stop: 52092, Start Num: 89

Candidate Starts for Xandras_85:

(Start: 79 @51703 has 17 MA's), (Start: 89 @51730 has 107 MA's), (157, 51943), (177, 52027), (181, 52039), (186, 52045), (198, 52081),

Gene: Xerxes_49 Start: 34533, Stop: 34925, Start Num: 80

Candidate Starts for Xerxes_49:

(Start: 80 @34533 has 53 MA's), (186, 34854),

Gene: Yang_36 Start: 25545, Stop: 25904, Start Num: 95

Candidate Starts for Yang_36:

(Start: 95 @25545 has 51 MA's), (140, 25683), (163, 25758), (181, 25833),

Gene: YassJohnny_83 Start: 51649, Stop: 52011, Start Num: 88

Candidate Starts for YassJohnny_83:

(Start: 78 @51628 has 3 MA's), (Start: 88 @51649 has 9 MA's), (157, 51862), (177, 51946), (181, 51958), (186, 51964), (198, 52000),

Gene: YesChef_35 Start: 25162, Stop: 25605, Start Num: 95

Candidate Starts for YesChef_35:

(Start: 95 @25162 has 51 MA's), (169, 25414), (181, 25465),

Gene: Youngblood_89 Start: 53200, Stop: 53562, Start Num: 89

Candidate Starts for Youngblood_89:

(Start: 79 @53173 has 17 MA's), (Start: 89 @53200 has 107 MA's), (157, 53413), (177, 53497), (181, 53509), (186, 53515), (198, 53551),

Gene: phiSASD1_10 Start: 25051, Stop: 25515, Start Num: 77

Candidate Starts for phiSASD1_10:

(Start: 77 @25051 has 4 MA's), (154, 25246), (157, 25258), (169, 25306), (170, 25309), (181, 25351), (194, 25384),

Gene: xkcd_89 Start: 53387, Stop: 53749, Start Num: 89

Candidate Starts for xkcd_89:

(Start: 79 @53360 has 17 MA's), (Start: 89 @53387 has 107 MA's), (157, 53600), (177, 53684), (181, 53696), (186, 53702), (198, 53738),