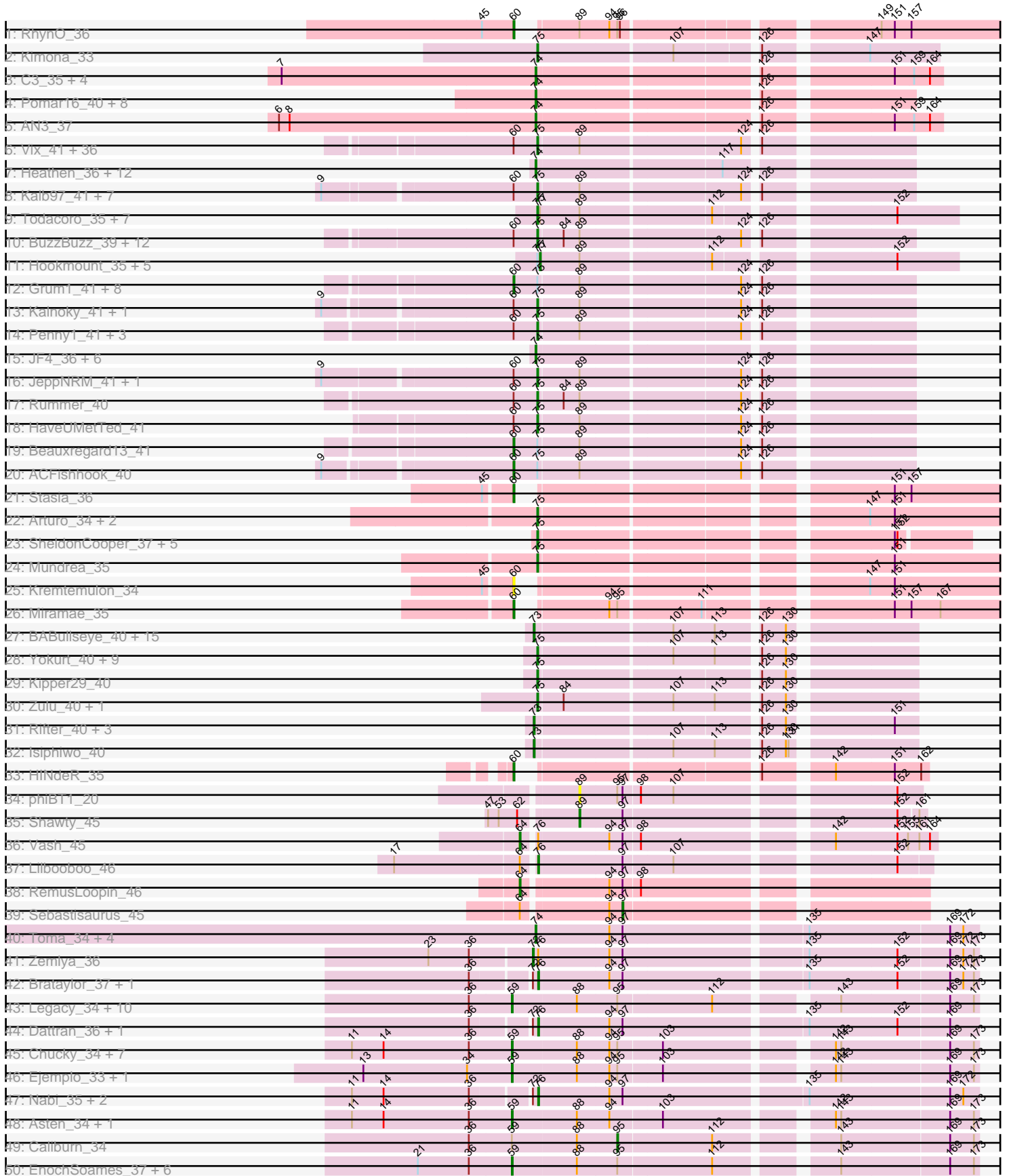
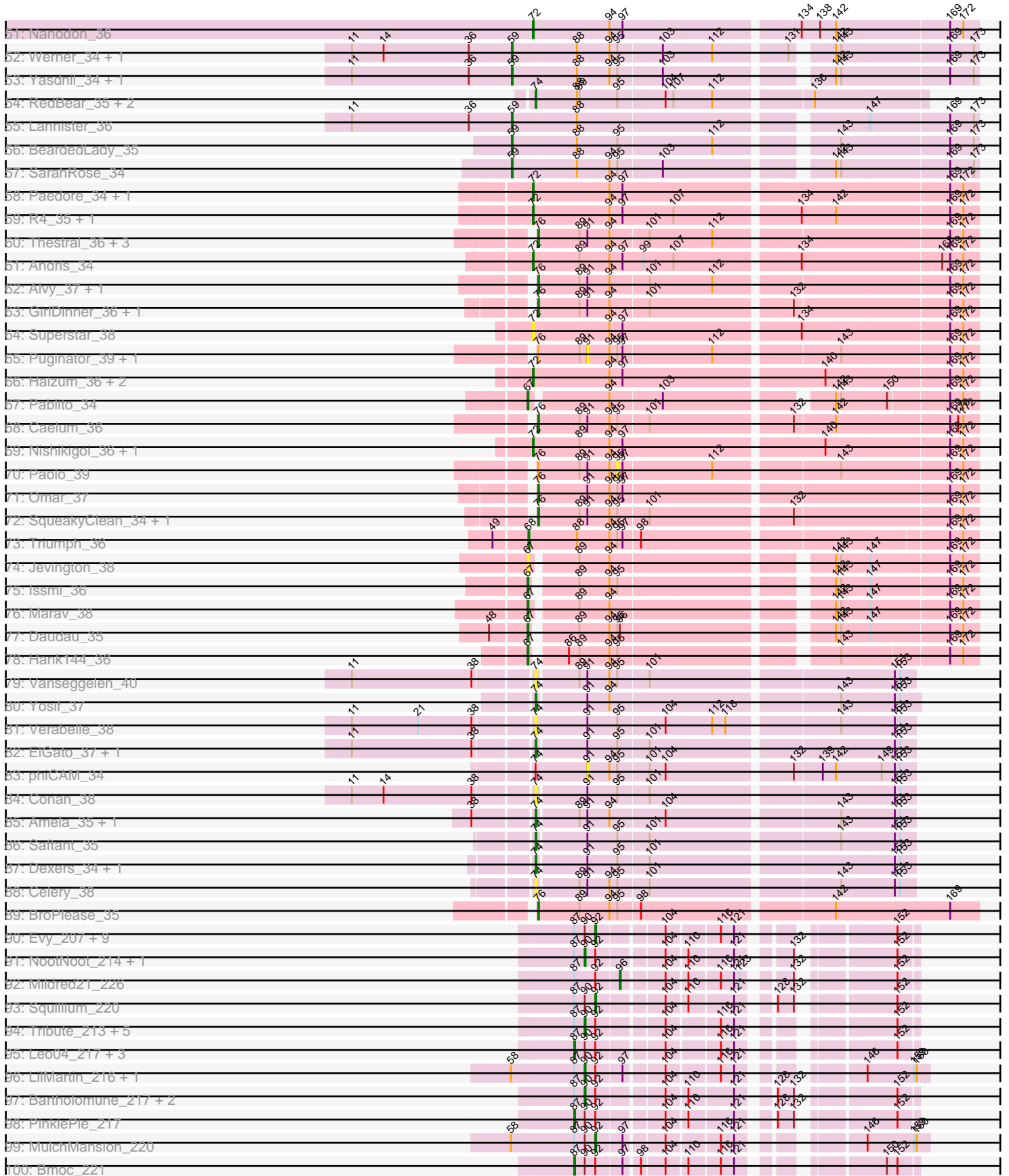


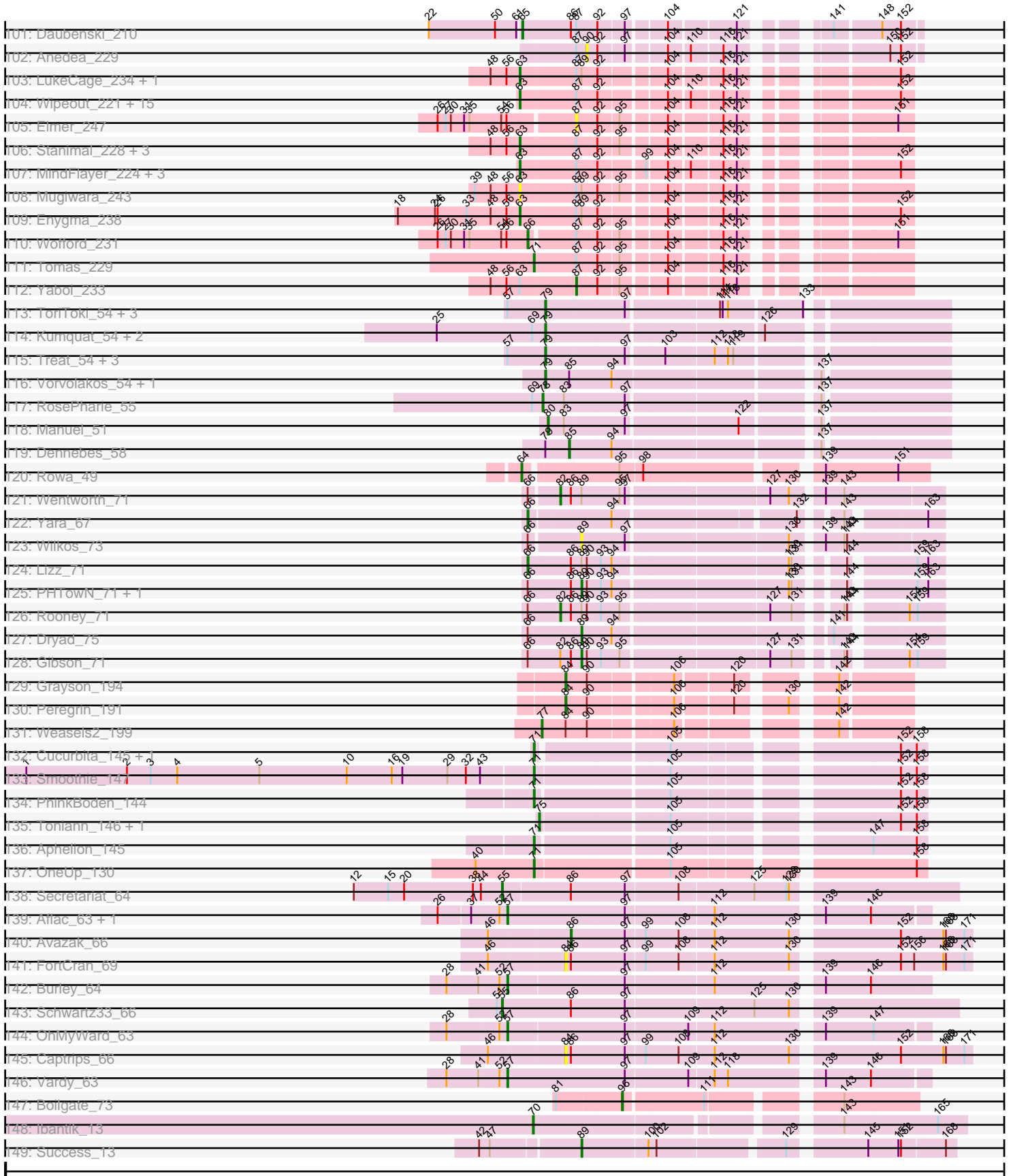
Pham 157498



Pham 157498



Pham 157498



Note: Tracks are now grouped by subcluster and scaled. Switching in subcluster is indicated by changes in track color. Track scale is now set by default to display the region 30 bp upstream of start 1 to 30 bp downstream of the last possible start. If this default region is judged to be packed too tightly with annotated starts, the track will be further scaled to only show that region of the ORF with annotated starts. This action will be indicated by adding "Zoomed" to the title. For starts, yellow indicates the location of called starts comprised solely of Glimmer/GeneMark auto-annotations, green indicates the location of called starts with at least 1 manual gene annotation.

Pham 157498 Report

This analysis was run 04/13/24 on database version 558.

WARNING: Pham size does not match number of genes in report. Either unphamerated genes have been added (by you) or starterator has removed genes due to invalid start codon.

Pham number 157498 has 402 members, 36 are drafts.

Phages represented in each track:

- Track 1 : RhynO_36
- Track 2 : Kimona_33
- Track 3 : C3_35, AN9_40, VC3_40, ANI8_40, VA6_37
- Track 4 : Pomar16_40, Naji_40, D29_36.1, Kerberos_40, StarStuff_40, Tomathan_40, DBQu4n_40, Duplo_40, D32_40
- Track 5 : AN3_37
- Track 6 : Vix_41, Microwolf_41, Dieselweasel_41, MuchMore_43, DaHudson_41, Phoebe_41, JHC117_41, GtownJaz_41, Grif_41, Jobu08_40, Taurus_41, Aglet_41, Tiffany_41, MarQuardt_41, Malinsilva_43, Mainiac_41, Pembroke_41, Cullens_41, Stagni_41, Fernando_41, Lilith_41, AugsMagnumOpus_43, Anubis_43, P28Green_41, JenCasNa_41, SoilDragon_40, Marie_41, Sabinator_40, MadMarie_41, StepMih_41, Farber_41, Zetzy_40, LugYA_43, Ollie_41, BreSam8_41, PGHhamlin_43, OlanP_40
- Track 7 : Heathen_36, Pistachio_37, MA5_36, Fred313_36, TNguyen7_36, SaturnRing_36, BlueBird_37, HelDan_36, Puppy_37, Bugatti_36, Scout_36, BabyRay_36, Idleandcovert_36
- Track 8 : Kalb97_41, Reba_41, Manu_41, Groupthink_41, Phranny_41, PurpleHaze_40, PhishRPhriends_39, Gemma_40
- Track 9 : Todacoro_35, Texage_34, QuinnKiro_34, Noella_35, Norbert_34, Margo_35, Panamaxus_34, Veracruz_34
- Track 10 : BuzzBuzz_39, Daishi_39, Soshari_42, Spike509_40, Methuselah_39, HashRod_41, Louie6_40, Bxz2_38, Misomonster_42, KADY_41, Phoxy_40, LarryKay_40, AgronaGT15_40
- Track 11 : Hookmount_35, Lambert1_35, ResDef_36, Popcicle_35, Caviar_35, Pocahontas_35
- Track 12 : Grum1_41, GingkoMaracino_41, Sabia_41, Watson_41, SoYo_41, Grub_41, MoneyMay_41, Wooldri_43, Hercules11_41
- Track 13 : Kalnoky_41, Marius_41
- Track 14 : Penny1_41, EpicPhail_41, LBerry_41, PotatoSplit_42
- Track 15 : JF4_36, JF2_36, MK4_36, Isca_36, Rockstar_36, Phantastic_36, B1_34
- Track 16 : JeppNRM_41, Heliosoles_40
- Track 17 : Rummer_40
- Track 18 : HaveUMetTed_41

- Track 19 : Beauxregard13_41
- Track 20 : ACFishhook_40
- Track 21 : Stasia_36
- Track 22 : Arturo_34, Kratak_35, Iracema64_36
- Track 23 : SheldonCooper_37, ChampagnePapi_37, Obama12_37, LHTSCC_37, BangNhom_36, Cerulean_37
- Track 24 : Mundrea_35
- Track 25 : Kremtemulon_34
- Track 26 : Miramae_35
- Track 27 : BABullseye_40, Gruunaga_40, Roksolana_41, Kazan_41, Blinn1_41, SuperAwesome_40, Hoot_40, Indra_42, McFly_40, Newrala_40, Cookiedough_40, VohminGhazi_40, Gladiator_40, SmellyB_40, JewelBug_41, Jordennis_40
- Track 28 : Yokurt_40, ToneTone_37, Artemis2UCLA_40, WunderPhul_40, Priamo_41, Zaka_40, Hexamo_40, Jeffabunny_40, Wiks_39, CloudWang3_40
- Track 29 : Kipper29_40
- Track 30 : Zulu_40, Tucker_40
- Track 31 : Rifter_40, Hammer_40, Koko_40, Blue7_41
- Track 32 : Isiphiwo_40
- Track 33 : HINdeR_35
- Track 34 : phiBT1_20
- Track 35 : Shawty_45
- Track 36 : Vash_45
- Track 37 : Lilbooboo_46
- Track 38 : RemusLoopin_46
- Track 39 : Sebastisaurus_45
- Track 40 : Toma_34, Lika_34, Sujidade_35, Goby_34, Godpower_35
- Track 41 : Zemlya_36
- Track 42 : Brataylor_37, Danzina_36
- Track 43 : Legacy_34, Esperer_34, Phettuccine_34, Hydra_36, Bovely_34, Unstoppable_34, Leviticus_34, Aaronocolus_34, Ozzie_34, SunsetPointe_34, Indigo_33
- Track 44 : Dattran_36, Celeste_35
- Track 45 : Chucky_34, BarryBee_37, OzzyJ_35, TagePhighter_36, Snorlax_34, Triste_34, Dwayne_34, Emaanora_37
- Track 46 : Ejemplo_33, TuanPN_33
- Track 47 : Nabi_35, Lorelei_35, Rana_35
- Track 48 : Asten_34, Whatever_34
- Track 49 : Caliburn_34
- Track 50 : EnochSoames_37, Izzy_35, Eddasa_35, Oliynyk_35, Rusticus_35, BryanRecycles_35, Jash_35
- Track 51 : Nanodon_36
- Track 52 : Werner_34, Hippo_34
- Track 53 : Yasdnil_34, Maneekul_34
- Track 54 : RedBear_35, Katalie_34, South40_34
- Track 55 : Lannister_36
- Track 56 : BeardedLady_35
- Track 57 : SarahRose_34
- Track 58 : Paedore_34, Loofah_35
- Track 59 : R4_35, ELB20_33
- Track 60 : Thestral_36, Bowden_35, TinaBelcher_35, TrvxScott_34
- Track 61 : Andris_34
- Track 62 : Alvy_37, BartholomewSD_37
- Track 63 : GirlDinner_36, Animus_34

- Track 64 : Superstar_38
- Track 65 : Puginator_39, Zainub_41
- Track 66 : Haizum_36, Diane_34, Amethyst_34
- Track 67 : Pablito_34
- Track 68 : Caelum_36
- Track 69 : Nishikigoi_36, Tefunt_36
- Track 70 : Paolo_39
- Track 71 : Omar_37
- Track 72 : SqueakyClean_34, Janus_35
- Track 73 : Triumph_36
- Track 74 : Jevington_38
- Track 75 : Issmi_36
- Track 76 : Marav_38
- Track 77 : Daudau_35
- Track 78 : Hank144_36
- Track 79 : Vanseggelen_40
- Track 80 : Yosif_37
- Track 81 : Verabelle_38
- Track 82 : ElGato_37, Provolone_36
- Track 83 : phiCAM_34
- Track 84 : Conan_38
- Track 85 : Amela_35, Verse_35
- Track 86 : Saftant_35
- Track 87 : Dexers_34, Alsaber_36
- Track 88 : Celery_38
- Track 89 : BroPlease_35
- Track 90 : Evy_207, Peebs_214, Larnav_223, Teutsch_216, Pepperwood_217, EGole_220, BlueOtter_218, PacManQ_217, HangryHippo_218, Cross_216
- Track 91 : NootNoot_214, Paradiddles_209
- Track 92 : Mildred21_226
- Track 93 : Squillium_220
- Track 94 : Tribute_213, Sushi23_217, Watermoore_216, Cursive_219, Samisti12_221, Lululemon_216
- Track 95 : Leo04_217, Targaryen_216, Jay2Jay_222, Warpy_220
- Track 96 : LilMartin_216, Angela_219
- Track 97 : Bartholomune_217, Persimmon_220, Braelyn_213
- Track 98 : PinkiePie_217
- Track 99 : MulchMansion_220
- Track 100 : Bmoc_221
- Track 101 : Daubenski_210
- Track 102 : Anedea_229
- Track 103 : LukeCage_234, StarPlatinum_238
- Track 104 : Wipeout_221, Battuta_229, Quaran19_231, PumpkinSpice_234, Starbow_228, JimJam_238, Spelly_236, Karimac_231, SaltySpittoon_231, Spilled_238, TomSawyer_235, Jollison_235, CeilingFan_243, Gibbi_239, Bordeaux_229, KentuckyRacer_242
- Track 105 : Elmer_247
- Track 106 : Stanimal_228, Genie2_228, Sollertia_229, BoomerJR_228
- Track 107 : MindFlayer_224, Amabiko_235, Birchlyn_230, IchabodCrane_225
- Track 108 : Mugiwara_243
- Track 109 : Enygma_238
- Track 110 : Wofford_231
- Track 111 : Tomas_229

- Track 112 : Yaboi_233
- Track 113 : ToriToki_54, HaugeAnator_54, Percastrophe_54, ZooBear_54
- Track 114 : Kumquat_54, Zeigle_54, WRightOn_58
- Track 115 : Treat_54, Olicious_54, Immanuel3_53, Romero_54
- Track 116 : Vorvolakos_54, Fabian_51
- Track 117 : RosePharie_55
- Track 118 : Manuel_51
- Track 119 : Dennebes_58
- Track 120 : Rowa_49
- Track 121 : Wentworth_71
- Track 122 : Yara_67
- Track 123 : Wilkos_73
- Track 124 : Lizz_71
- Track 125 : PHTowN_71, ShakeNBake_71
- Track 126 : Rooney_71
- Track 127 : Dryad_75
- Track 128 : Gibson_71
- Track 129 : Grayson_194
- Track 130 : Peregrin_191
- Track 131 : Weasels2_199
- Track 132 : Cucurbita_145, Culver_146
- Track 133 : Smoothie_147
- Track 134 : PhinkBoden_144
- Track 135 : Toniann_146, Lozinak_146
- Track 136 : Aphelion_145
- Track 137 : OneUp_130
- Track 138 : Secretariat_64
- Track 139 : Aflac_63, TenaciousP_69
- Track 140 : Avazak_66
- Track 141 : FortCran_69
- Track 142 : Burley_64
- Track 143 : Schwartz33_66
- Track 144 : OhMyWard_63
- Track 145 : Captrips_66
- Track 146 : Vardy_63
- Track 147 : Boilgate_73
- Track 148 : Ibantik_13
- Track 149 : Success_13

Summary of Final Annotations (See graph section above for start numbers):

The start number called the most often in the published annotations is 75, it was called in 102 of the 366 non-draft genes in the pham.

Genes that call this "Most Annotated" start:

- Aglet_41, AgronaGT15_40, Anubis_43, Artemis2UCLA_40, Arturo_34, AugsMagnumOpus_43, BangNhom_36, BreSam8_41, BuzzBuzz_39, Bxz2_38, Cerulean_37, ChampagnePapi_37, CloudWang3_40, Cullens_41, DaHudson_41, Daishi_39, Dieselweasel_41, EpicPhail_41, Farber_41, Fernando_41, Gemma_40, Grif_41, Groupthink_41, GtownJaz_41, HashRod_41, HaveUMetTed_41,

Heliosoles_40, Hexamo_40, Iracema64_36, JHC117_41, Jeffabunny_40, JenCasNa_41, JeppNRM_41, Jobu08_40, KADY_41, Kalb97_41, Kalnoky_41, Kimona_33, Kipper29_40, Kratark_35, LBerry_41, LHTSCC_37, LarryKay_40, Lilith_41, Louie6_40, Lozinak_146, LugYA_43, MadMarie_41, Mainiac_41, Malinsilva_43, Manu_41, MarQuardt_41, Margo_35, Marie_41, Marius_41, Methuselah_39, Microwolf_41, Misomonster_42, MuchMore_43, Mundrea_35, Noella_35, Norbert_34, Obama12_37, OlanP_40, Ollie_41, P28Green_41, PGHhamlin_43, Panamaxus_34, Pembroke_41, Penny1_41, PhishRPhriends_39, Phoebe_41, Phoxy_40, Phranny_41, PotatoSplit_42, Priamo_41, PurpleHaze_40, QuinnKiro_34, Reba_41, Rummer_40, Sabinator_40, SheldonCooper_37, SoilDragon_40, Soshari_42, Spike509_40, Stagni_41, StepMih_41, Taurus_41, Texage_34, Tiffany_41, Todacoro_35, ToneTone_37, Toniann_146, Tucker_40, Veracruz_34, Vix_41, Wiks_39, WunderPhul_40, Yokurt_40, Zaka_40, Zetzy_40, Zulu_40,

Genes that have the "Most Annotated" start but do not call it:

- ACFishhook_40, Beauxregard13_41, Caviar_35, GingkoMaracino_41, Grub_41, Grum1_41, Hercules11_41, Hookmount_35, Lambert1_35, MoneyMay_41, Pocahontas_35, Popcicle_35, ResDef_36, Sabia_41, SoYo_41, Watson_41, Wooldri_43,

Genes that do not have the "Most Annotated" start:

- AN3_37, AN9_40, AN18_40, Aaronocolus_34, Aflac_63, Alsaber_36, Alvy_37, Amabiko_235, Amela_35, Amethyst_34, Andris_34, Anedea_229, Angela_219, Animus_34, Aphelion_145, Asten_34, Avazak_66, B1_34, BABullseye_40, BabyRay_36, BarryBee_37, BartholomewSD_37, Bartholomune_217, Battuta_229, BeardedLady_35, Birchlyn_230, Blinn1_41, Blue7_41, BlueBird_37, BlueOtter_218, Bmoc_221, Boilgate_73, BoomerJR_228, Bordeaux_229, Bovely_34, Bowden_35, Braelyn_213, Brataylor_37, BroPlease_35, BryanRecycles_35, Bugatti_36, Burley_64, C3_35, Caelum_36, Caliburn_34, Captrips_66, CeilingFan_243, Celery_38, Celeste_35, Chucky_34, Conan_38, Cookiedough_40, Cross_216, Cucurbita_145, Culver_146, Cursive_219, D29_36.1, D32_40, DBQu4n_40, Danzina_36, Dattran_36, Daubenski_210, Daudau_35, Dennebes_58, Dexers_34, Diane_34, Dryad_75, Duplo_40, Dwayne_34, EGole_220, ELB20_33, Eddasa_35, Ejemplo_33, ElGato_37, Elmer_247, Emaanora_37, EnochSoames_37, Enigma_238, Esperer_34, Evy_207, Fabian_51, FortCran_69, Fred313_36, Genie2_228, Gibbi_239, Gibson_71, GirlDinner_36, Gladiator_40, Goby_34, Godpower_35, Grayson_194, Gruunaga_40, HINdeR_35, Haizum_36, Hammer_40, HangryHippo_218, Hank144_36, HaugeAnator_54, Heathen_36, HelDan_36, Hippo_34, Hoot_40, Hydra_36, Ibantik_13, IchabodCrane_225, Idleandcovert_36, Immanuel3_53, Indigo_33, Indra_42, Isca_36, Isiphiwo_40, Issmi_36, Izzy_35, JF2_36, JF4_36, Janus_35, Jash_35, Jay2Jay_222, Jevington_38, JewelBug_41, JimJam_238, Jollison_235, Jordennis_40, Karimac_231, Katalie_34, Kazan_41, KentuckyRacer_242, Kerberos_40, Koko_40, Kremtemulon_34, Kumquat_54, Lannister_36, Larnav_223, Legacy_34, Leo04_217, Leviticus_34, Lika_34, LilMartin_216, Lilbooboo_46, Lizz_71, Loofah_35, Lorelei_35, LukeCage_234, Lululemon_216, MA5_36, MK4_36, Maneekul_34, Manuel_51, Marav_38, McFly_40, Mildred21_226, MindFlayer_224, Miramae_35, Mugiwara_243, MulchMansion_220, Nabi_35, Naji_40, Nanodon_36, Newrala_40, Nishikigoi_36, NootNoot_214, OhMyWard_63, Olicious_54, Oliynyk_35, Omar_37, OneUp_130, Ozzie_34, OzzyJ_35, PHTown_71, Pablito_34, PacManQ_217, Paedore_34, Paolo_39, Paradiddles_209, Peebs_214, Pepperwood_217, Percastrophe_54, Peregrin_191, Persimmon_220, Phantastic_36, Phettuccine_34, PhinkBoden_144, PinkiePie_217,

Pistachio_37, Pomar16_40, Provolone_36, Puginator_39, PumpkinSpice_234, Puppy_37, Quaran19_231, R4_35, Rana_35, RedBear_35, RemusLoopin_46, RhynO_36, Rifter_40, Rockstar_36, Roksolana_41, Romero_54, Rooney_71, RosePharie_55, Rowa_49, Rusticus_35, Saftant_35, SaltySpitooon_231, Samisti12_221, SarahRose_34, SaturnRing_36, Schwartz33_66, Scout_36, Sebastisaurus_45, Secretariat_64, ShakeNBake_71, Shawty_45, SmellyB_40, Smoothie_147, Snorlax_34, Sollertia_229, South40_34, Spelly_236, Spilled_238, SqueakyClean_34, Squillium_220, Stanimal_228, StarPlatinum_238, StarStuff_40, Starbow_228, Stasia_36, Success_13, Sujidade_35, SunsetPointe_34, SuperAwesome_40, Superstar_38, Sushi23_217, TNguyen7_36, TagePhighter_36, Targaryen_216, Tefunt_36, TenaciousP_69, Teutsch_216, Thestral_36, TinaBelcher_35, TomSawyer_235, Toma_34, Tomas_229, Tomathan_40, ToriToki_54, Treat_54, Tribute_213, Triste_34, Triumph_36, TrvxScott_34, TuanPN_33, Unstoppable_34, VA6_37, VC3_40, Vanseggelen_40, Vardy_63, Vash_45, Verabelle_38, Verse_35, VohminGhazi_40, Vorvolakos_54, WRightOn_58, Warpy_220, Watermoore_216, Weasels2_199, Wentworth_71, Werner_34, Whatever_34, Wilkos_73, Wipeout_221, Wofford_231, Yaboi_233, Yara_67, Yasdnil_34, Yosif_37, Zainub_41, Zeigle_54, Zemlya_36, ZooBear_54, phiBT1_20, phiCAM_34,

Summary by start number:

Start 55:

- Found in 2 of 402 (0.5%) of genes in pham
- Manual Annotations of this start: 2 of 366
- Called 100.0% of time when present
- Phage (with cluster) where this start called: Schwartz33_66 (DJ), Secretariat_64 (DJ),

Start 57:

- Found in 13 of 402 (3.2%) of genes in pham
- Manual Annotations of this start: 4 of 366
- Called 38.5% of time when present
- Phage (with cluster) where this start called: Aflac_63 (DJ), Burley_64 (DJ), OhMyWard_63 (DJ), TenaciousP_69 (DJ), Vardy_63 (DJ),

Start 59:

- Found in 38 of 402 (9.5%) of genes in pham
- Manual Annotations of this start: 35 of 366
- Called 97.4% of time when present
- Phage (with cluster) where this start called: Aaronocolus_34 (BD1), Asten_34 (BD1), BarryBee_37 (BD1), BeardedLady_35 (BD1), Bovely_34 (BD1), BryanRecycles_35 (BD1), Chucky_34 (BD1), Dwayne_34 (BD1), Eddasa_35 (BD1), Ejemplo_33 (BD1), Emaanora_37 (BD1), EnochSoames_37 (BD1), Esperer_34 (BD1), Hippo_34 (BD1), Hydra_36 (BD1), Indigo_33 (BD1), Izzy_35 (BD1), Jash_35 (BD1), Lannister_36 (BD1), Legacy_34 (BD1), Leviticus_34 (BD1), Maneekul_34 (BD1), Oliynyk_35 (BD1), Ozzie_34 (BD1), OzzyJ_35 (BD1), Phettuccine_34 (BD1), Rusticus_35 (BD1), SarahRose_34 (BD1), Snorlax_34 (BD1), SunsetPointe_34 (BD1), TagePhighter_36 (BD1), Triste_34 (BD1), TuanPN_33 (BD1), Unstoppable_34 (BD1), Werner_34 (BD1), Whatever_34 (BD1), Yasdnil_34 (BD1),

Start 60:

- Found in 84 of 402 (20.9%) of genes in pham

- Manual Annotations of this start: 15 of 366
- Called 19.0% of time when present
- Phage (with cluster) where this start called: ACFishhook_40 (A3), Beauxregard13_41 (A3), GingkoMaracino_41 (A3), Grub_41 (A3), Grum1_41 (A3), HINdeR_35 (A7), Hercules11_41 (A3), Kremtemulon_34 (A4), Miramae_35 (A4), MoneyMay_41 (A3), RhynO_36 (A10), Sabia_41 (A3), SoYo_41 (A3), Stasia_36 (A4), Watson_41 (A3), Wooldri_43 (A3),

Start 63:

- Found in 29 of 402 (7.2%) of genes in pham
- Manual Annotations of this start: 23 of 366
- Called 96.6% of time when present
- Phage (with cluster) where this start called: Amabiko_235 (BE2), Battuta_229 (BE2), Birchlyn_230 (BE2), BoomerJR_228 (BE2), Bordeaux_229 (BE2), CeilingFan_243 (BE2), Enygma_238 (BE2), Genie2_228 (BE2), Gibbi_239 (BE2), IchabodCrane_225 (BE2), JimJam_238 (BE2), Jollison_235 (BE2), Karimac_231 (BE2), KentuckyRacer_242 (BE2), LukeCage_234 (BE2), MindFlayer_224 (BE2), Mugiwara_243 (BE2), PumpkinSpice_234 (BE2), Quaran19_231 (BE2), SaltySpittoon_231 (BE2), Sollertia_229 (BE2), Spelly_236 (BE2), Spilled_238 (BE2), Stanimal_228 (BE2), StarPlatinum_238 (BE2), Starbow_228 (BE2), TomSawyer_235 (BE2), Wipeout_221 (BE2),

Start 64:

- Found in 5 of 402 (1.2%) of genes in pham
- Manual Annotations of this start: 3 of 366
- Called 60.0% of time when present
- Phage (with cluster) where this start called: RemusLoopin_46 (BB2), Rowa_49 (BL), Vash_45 (BB1),

Start 65:

- Found in 1 of 402 (0.2%) of genes in pham
- Manual Annotations of this start: 1 of 366
- Called 100.0% of time when present
- Phage (with cluster) where this start called: Daubenski_210 (BE1),

Start 66:

- Found in 10 of 402 (2.5%) of genes in pham
- Manual Annotations of this start: 3 of 366
- Called 30.0% of time when present
- Phage (with cluster) where this start called: Lizz_71 (BN), Wofford_231 (BE2), Yara_67 (BN),

Start 67:

- Found in 6 of 402 (1.5%) of genes in pham
- Manual Annotations of this start: 5 of 366
- Called 100.0% of time when present
- Phage (with cluster) where this start called: Daudau_35 (BD2), Hank144_36 (BD2), Issmi_36 (BD2), Jevington_38 (BD2), Marav_38 (BD2), Pablito_34 (BD2),

Start 68:

- Found in 1 of 402 (0.2%) of genes in pham
- Manual Annotations of this start: 1 of 366
- Called 100.0% of time when present

- Phage (with cluster) where this start called: Triumph_36 (BD2),

Start 70:

- Found in 1 of 402 (0.2%) of genes in pham
- Manual Annotations of this start: 1 of 366
- Called 100.0% of time when present
- Phage (with cluster) where this start called: Ibantik_13 (singleton),

Start 71:

- Found in 7 of 402 (1.7%) of genes in pham
- Manual Annotations of this start: 7 of 366
- Called 100.0% of time when present
- Phage (with cluster) where this start called: Aphelion_145 (CQ1), Cucurbita_145 (CQ1), Culver_146 (CQ1), OneUp_130 (CQ2), PhinkBoden_144 (CQ1), Smoothie_147 (CQ1), Tomas_229 (BE2),

Start 72:

- Found in 20 of 402 (5.0%) of genes in pham
- Manual Annotations of this start: 11 of 366
- Called 65.0% of time when present
- Phage (with cluster) where this start called: Amethyst_34 (BD2), Andris_34 (BD2), Diane_34 (BD2), ELB20_33 (BD2), Haizum_36 (BD2), Loofah_35 (BD2), Nanodon_36 (BD1), Nishikigoi_36 (BD2), Paedore_34 (BD2), R4_35 (BD2), Superstar_38 (BD2), Tefunt_36 (BD2), Zemlya_36 (BD1),

Start 73:

- Found in 21 of 402 (5.2%) of genes in pham
- Manual Annotations of this start: 21 of 366
- Called 100.0% of time when present
- Phage (with cluster) where this start called: BABullseye_40 (A6), Blinn1_41 (A6), Blue7_41 (A6), Cookiedough_40 (A6), Gladiator_40 (A6), Gruunaga_40 (A6), Hammer_40 (A6), Hoot_40 (A6), Indra_42 (A6), Isiphiwo_40 (A6), JewelBug_41 (A6), Jordennis_40 (A6), Kazan_41 (A6), Koko_40 (A6), McFly_40 (A6), Newrala_40 (A6), Rifter_40 (A6), Roksolana_41 (A6), SmellyB_40 (A6), SuperAwesome_40 (A6), VohminGhazi_40 (A6),

Start 74:

- Found in 56 of 402 (13.9%) of genes in pham
- Manual Annotations of this start: 48 of 366
- Called 98.2% of time when present
- Phage (with cluster) where this start called: AN3_37 (A2), AN9_40 (A2), ANI8_40 (A2), Alsaber_36 (BD3), Amela_35 (BD3), B1_34 (A3), BabyRay_36 (A3), BlueBird_37 (A3), Bugatti_36 (A3), C3_35 (A2), Celery_38 (BD3), Conan_38 (BD3), D29_36.1 (A2), D32_40 (A2), DBQu4n_40 (A2), Dexers_34 (BD3), Duplo_40 (A2), ElGato_37 (BD3), Fred313_36 (A3), Goby_34 (BD1), Godpower_35 (BD1), Heathen_36 (A3), HelDan_36 (A3), Idleandcovert_36 (A3), Isca_36 (A3), JF2_36 (A3), JF4_36 (A3), Katalie_34 (BD1), Kerberos_40 (A2), Lika_34 (BD1), MA5_36 (A3), MK4_36 (A3), Naji_40 (A2), Phantastic_36 (A3), Pistachio_37 (A3), Pomar16_40 (A2), Provolone_36 (BD3), Puppy_37 (A3), RedBear_35 (BD1), Rockstar_36 (A3), Saftant_35 (BD3), SaturnRing_36 (A3), Scout_36 (A3), South40_34 (BD1), StarStuff_40 (A2), Sujidade_35 (BD1), TNguyen7_36 (A3), Toma_34 (BD1), Tomathan_40 (A2), VA6_37 (A2), VC3_40 (A2), Vanseggelen_40 (BD3), Verabelle_38 (BD3), Verse_35 (BD3), Yosif_37 (BD3),

Start 75:

- Found in 119 of 402 (29.6%) of genes in pham
- Manual Annotations of this start: 102 of 366
- Called 85.7% of time when present
- Phage (with cluster) where this start called: Aglet_41 (A3), AgronaGT15_40 (A3), Anubis_43 (A3), Artemis2UCLA_40 (A6), Arturo_34 (A4), AugsMagnumOpus_43 (A3), BangNhom_36 (A4), BreSam8_41 (A3), BuzzBuzz_39 (A3), Bxz2_38 (A3), Cerulean_37 (A4), ChampagnePapi_37 (A4), CloudWang3_40 (A6), Cullens_41 (A3), DaHudson_41 (A3), Daishi_39 (A3), Dieselweasel_41 (A3), EpicPhail_41 (A3), Farber_41 (A3), Fernando_41 (A3), Gemma_40 (A3), Grif_41 (A3), Groupthink_41 (A3), GtownJaz_41 (A3), HashRod_41 (A3), HaveUMetTed_41 (A3), Heliosoles_40 (A3), Hexamo_40 (A6), Iracema64_36 (A4), JHC117_41 (A3), Jeffabunny_40 (A6), JenCasNa_41 (A3), JeppNRM_41 (A3), Jobu08_40 (A3), KADY_41 (A3), Kalb97_41 (A3), Kalnoky_41 (A3), Kimona_33 (A19), Kipper29_40 (A6), Kratark_35 (A4), LBerry_41 (A3), LHTSCC_37 (A4), LarryKay_40 (A3), Lilith_41 (A3), Louie6_40 (A3), Lozinak_146 (CQ1), LugYA_43 (A3), MadMarie_41 (A3), Mainiac_41 (A3), Malinsilva_43 (A3), Manu_41 (A3), MarQuardt_41 (A3), Margo_35 (A3), Marie_41 (A3), Marius_41 (A3), Methuselah_39 (A3), Microwolf_41 (A3), Misomonster_42 (A3), MuchMore_43 (A3), Mundrea_35 (A4), Noella_35 (A3), Norbert_34 (A3), Obama12_37 (A4), OlanP_40 (A3), Ollie_41 (A3), P28Green_41 (A3), PGHhamlin_43 (A3), Panamaxus_34 (A3), Pembroke_41 (A3), Penny1_41 (A3), PhishRPhriends_39 (A3), Phoebe_41 (A3), Phoxy_40 (A3), Phranny_41 (A3), PotatoSplit_42 (A3), Priamo_41 (A6), PurpleHaze_40 (A3), QuinnKiro_34 (A3), Reba_41 (A3), Rummer_40 (A3), Sabinator_40 (A3), SheldonCooper_37 (A4), SoilDragon_40 (A3), Soshari_42 (A3), Spike509_40 (A3), Stagni_41 (A3), StepMih_41 (A3), Taurus_41 (A3), Texage_34 (A3), Tiffany_41 (A3), Todacoro_35 (A3), ToneTone_37 (A6), Toniann_146 (CQ1), Tucker_40 (A6), Veracruz_34 (A3), Vix_41 (A3), Wiks_39 (A6), WunderPhul_40 (A6), Yokurt_40 (A6), Zaka_40 (A6), Zetty_40 (A3), Zulu_40 (A6),

Start 76:

- Found in 26 of 402 (6.5%) of genes in pham
- Manual Annotations of this start: 20 of 366
- Called 80.8% of time when present
- Phage (with cluster) where this start called: Alvy_37 (BD2), Animus_34 (BD2), BartholomewSD_37 (BD2), Bowden_35 (BD2), Brataylor_37 (BD1), BroPlease_35 (BD4), Caelum_36 (BD2), Celeste_35 (BD1), Danzina_36 (BD1), Dattran_36 (BD1), GirlDinner_36 (BD2), Janus_35 (BD2), Lilbooboo_46 (BB1), Lorelei_35 (BD1), Nabi_35 (BD1), Omar_37 (BD2), Rana_35 (BD1), SqueakyClean_34 (BD2), Thestral_36 (BD2), TinaBelcher_35 (BD2), TrvxScott_34 (BD2),

Start 77:

- Found in 15 of 402 (3.7%) of genes in pham
- Manual Annotations of this start: 6 of 366
- Called 46.7% of time when present
- Phage (with cluster) where this start called: Caviar_35 (A3), Hookmount_35 (A3), Lambert1_35 (A3), Pocahontas_35 (A3), Popcicle_35 (A3), ResDef_36 (A3), Weasels2_199 (CB),

Start 78:

- Found in 1 of 402 (0.2%) of genes in pham
- Manual Annotations of this start: 1 of 366

- Called 100.0% of time when present
- Phage (with cluster) where this start called: RosePharie_55 (BF),

Start 79:

- Found in 14 of 402 (3.5%) of genes in pham
- Manual Annotations of this start: 13 of 366
- Called 92.9% of time when present
- Phage (with cluster) where this start called: Fabian_51 (BF), HaugeAnator_54 (BF), Immanuel3_53 (BF), Kumquat_54 (BF), Olicious_54 (BF), Percastrophe_54 (BF), Romero_54 (BF), ToriToki_54 (BF), Treat_54 (BF), Vorvolakos_54 (BF), WRightOn_58 (BF), Zeigle_54 (BF), ZooBear_54 (BF),

Start 80:

- Found in 1 of 402 (0.2%) of genes in pham
- Manual Annotations of this start: 1 of 366
- Called 100.0% of time when present
- Phage (with cluster) where this start called: Manuel_51 (BF),

Start 82:

- Found in 3 of 402 (0.7%) of genes in pham
- Manual Annotations of this start: 2 of 366
- Called 66.7% of time when present
- Phage (with cluster) where this start called: Rooney_71 (BN), Wentworth_71 (BN),

Start 84:

- Found in 21 of 402 (5.2%) of genes in pham
- Manual Annotations of this start: 2 of 366
- Called 19.0% of time when present
- Phage (with cluster) where this start called: Captrips_66 (DJ), FortCran_69 (DJ), Grayson_194 (CB), Peregrin_191 (CB),

Start 85:

- Found in 3 of 402 (0.7%) of genes in pham
- Manual Annotations of this start: 1 of 366
- Called 33.3% of time when present
- Phage (with cluster) where this start called: Dennebes_58 (BF),

Start 86:

- Found in 13 of 402 (3.2%) of genes in pham
- Manual Annotations of this start: 1 of 366
- Called 7.7% of time when present
- Phage (with cluster) where this start called: Avazak_66 (DJ),

Start 87:

- Found in 66 of 402 (16.4%) of genes in pham
- Manual Annotations of this start: 7 of 366
- Called 12.1% of time when present
- Phage (with cluster) where this start called: Bmoc_221 (BE1), Elmer_247 (BE2), Jay2Jay_222 (BE1), Leo04_217 (BE1), PinkiePie_217 (BE1), Targaryen_216 (BE1), Warpy_220 (BE1), Yaboi_233 (BE2),

Start 89:

- Found in 139 of 402 (34.6%) of genes in pham

- Manual Annotations of this start: 6 of 366
- Called 5.8% of time when present
- Phage (with cluster) where this start called: Dryad_75 (BN), Gibson_71 (BN), PHTown_71 (BN), ShakeNBake_71 (BN), Shawty_45 (BB1), Success_13 (singleton), Wilkos_73 (BN), phiBT1_20 (BB1),

Start 90:

- Found in 40 of 402 (10.0%) of genes in pham
- Manual Annotations of this start: 12 of 366
- Called 35.0% of time when present
- Phage (with cluster) where this start called: Anedea_229 (BE1), Angela_219 (BE1), Bartholomune_217 (BE1), Braelyn_213 (BE1), Cursive_219 (BE1), LilMartin_216 (BE1), Lululemon_216 (BE1), NootNoot_214 (BE1), Paradiddles_209 (BE1), Persimmon_220 (BE1), Samisti12_221 (BE1), Sushi23_217 (BE1), Tribute_213 (BE1), Watermoore_216 (BE1),

Start 91:

- Found in 28 of 402 (7.0%) of genes in pham
- No Manual Annotations of this start.
- Called 10.7% of time when present
- Phage (with cluster) where this start called: Puginator_39 (BD2), Zainub_41 (BD2), phiCAM_34 (BD3),

Start 92:

- Found in 66 of 402 (16.4%) of genes in pham
- Manual Annotations of this start: 8 of 366
- Called 18.2% of time when present
- Phage (with cluster) where this start called: BlueOtter_218 (BE1), Cross_216 (BE1), EGole_220 (BE1), Evy_207 (BE1), HangryHippo_218 (BE1), Larnav_223 (BE1), MulchMansion_220 (BE1), PacManQ_217 (BE1), Peebs_214 (BE1), Pepperwood_217 (BE1), Squillium_220 (BE1), Teutsch_216 (BE1),

Start 95:

- Found in 76 of 402 (18.9%) of genes in pham
- Manual Annotations of this start: 1 of 366
- Called 2.6% of time when present
- Phage (with cluster) where this start called: Caliburn_34 (BD1), Paolo_39 (BD2),

Start 96:

- Found in 4 of 402 (1.0%) of genes in pham
- Manual Annotations of this start: 2 of 366
- Called 50.0% of time when present
- Phage (with cluster) where this start called: Boilgate_73 (K8), Mildred21_226 (BE1),

Start 97:

- Found in 64 of 402 (15.9%) of genes in pham
- Manual Annotations of this start: 1 of 366
- Called 1.6% of time when present
- Phage (with cluster) where this start called: Sebastisaurus_45 (BB2),

Summary by clusters:

There are 24 clusters represented in this pham: singleton, DJ, BL, BN, BF, K8, A10, A19, BD4, A3, A2, BD1, A4, A7, A6, CQ2, CQ1, BB2, BB1, BD3, CB, BD2, BE2, BE1,

Info for manual annotations of cluster A10:

- Start number 60 was manually annotated 1 time for cluster A10.

Info for manual annotations of cluster A19:

- Start number 75 was manually annotated 1 time for cluster A19.

Info for manual annotations of cluster A2:

- Start number 74 was manually annotated 15 times for cluster A2.

Info for manual annotations of cluster A3:

- Start number 60 was manually annotated 11 times for cluster A3.
- Start number 74 was manually annotated 18 times for cluster A3.
- Start number 75 was manually annotated 76 times for cluster A3.
- Start number 77 was manually annotated 5 times for cluster A3.

Info for manual annotations of cluster A4:

- Start number 60 was manually annotated 2 times for cluster A4.
- Start number 75 was manually annotated 10 times for cluster A4.

Info for manual annotations of cluster A6:

- Start number 73 was manually annotated 21 times for cluster A6.
- Start number 75 was manually annotated 13 times for cluster A6.

Info for manual annotations of cluster A7:

- Start number 60 was manually annotated 1 time for cluster A7.

Info for manual annotations of cluster BB1:

- Start number 64 was manually annotated 1 time for cluster BB1.
- Start number 76 was manually annotated 1 time for cluster BB1.
- Start number 89 was manually annotated 1 time for cluster BB1.

Info for manual annotations of cluster BB2:

- Start number 64 was manually annotated 1 time for cluster BB2.
- Start number 97 was manually annotated 1 time for cluster BB2.

Info for manual annotations of cluster BD1:

- Start number 59 was manually annotated 35 times for cluster BD1.
- Start number 72 was manually annotated 2 times for cluster BD1.
- Start number 74 was manually annotated 8 times for cluster BD1.
- Start number 76 was manually annotated 7 times for cluster BD1.
- Start number 95 was manually annotated 1 time for cluster BD1.

Info for manual annotations of cluster BD2:

- Start number 67 was manually annotated 5 times for cluster BD2.
- Start number 68 was manually annotated 1 time for cluster BD2.
- Start number 72 was manually annotated 9 times for cluster BD2.
- Start number 76 was manually annotated 11 times for cluster BD2.

Info for manual annotations of cluster BD3:

- Start number 74 was manually annotated 7 times for cluster BD3.

Info for manual annotations of cluster BD4:

- Start number 76 was manually annotated 1 time for cluster BD4.

Info for manual annotations of cluster BE1:

- Start number 65 was manually annotated 1 time for cluster BE1.
- Start number 87 was manually annotated 6 times for cluster BE1.
- Start number 90 was manually annotated 12 times for cluster BE1.
- Start number 92 was manually annotated 8 times for cluster BE1.
- Start number 96 was manually annotated 1 time for cluster BE1.

Info for manual annotations of cluster BE2:

- Start number 63 was manually annotated 23 times for cluster BE2.
- Start number 66 was manually annotated 1 time for cluster BE2.
- Start number 71 was manually annotated 1 time for cluster BE2.
- Start number 87 was manually annotated 1 time for cluster BE2.

Info for manual annotations of cluster BF:

- Start number 78 was manually annotated 1 time for cluster BF.
- Start number 79 was manually annotated 13 times for cluster BF.
- Start number 80 was manually annotated 1 time for cluster BF.
- Start number 85 was manually annotated 1 time for cluster BF.

Info for manual annotations of cluster BL:

- Start number 64 was manually annotated 1 time for cluster BL.

Info for manual annotations of cluster BN:

- Start number 66 was manually annotated 2 times for cluster BN.
- Start number 82 was manually annotated 2 times for cluster BN.
- Start number 89 was manually annotated 4 times for cluster BN.

Info for manual annotations of cluster CB:

- Start number 77 was manually annotated 1 time for cluster CB.
- Start number 84 was manually annotated 2 times for cluster CB.

Info for manual annotations of cluster CQ1:

- Start number 71 was manually annotated 5 times for cluster CQ1.
- Start number 75 was manually annotated 2 times for cluster CQ1.

Info for manual annotations of cluster CQ2:

- Start number 71 was manually annotated 1 time for cluster CQ2.

Info for manual annotations of cluster DJ:

- Start number 55 was manually annotated 2 times for cluster DJ.
- Start number 57 was manually annotated 4 times for cluster DJ.
- Start number 86 was manually annotated 1 time for cluster DJ.

Info for manual annotations of cluster K8:

- Start number 96 was manually annotated 1 time for cluster K8.

Gene Information:

Gene: ACFishhook_40 Start: 28503, Stop: 28093, Start Num: 60
Candidate Starts for ACFishhook_40:
(9, 28701), (Start: 60 @28503 has 15 MA's), (Start: 75 @28476 has 102 MA's), (Start: 89 @28431 has 6 MA's), (124, 28260), (126, 28248),

Gene: AN3_37 Start: 28097, Stop: 27681, Start Num: 74
Candidate Starts for AN3_37:
(6, 28388), (8, 28376), (Start: 74 @28097 has 48 MA's), (126, 27866), (151, 27734), (159, 27713), (164, 27695),

Gene: AN9_40 Start: 28082, Stop: 27666, Start Num: 74
Candidate Starts for AN9_40:
(7, 28370), (Start: 74 @28082 has 48 MA's), (126, 27851), (151, 27719), (159, 27698), (164, 27680),

Gene: ANI8_40 Start: 28082, Stop: 27666, Start Num: 74
Candidate Starts for ANI8_40:
(7, 28370), (Start: 74 @28082 has 48 MA's), (126, 27851), (151, 27719), (159, 27698), (164, 27680),

Gene: Aaronocolus_34 Start: 25685, Stop: 26173, Start Num: 59
Candidate Starts for Aaronocolus_34:
(36, 25637), (Start: 59 @25685 has 35 MA's), (88, 25757), (Start: 95 @25802 has 1 MA's), (112, 25904), (143, 26021), (169, 26141), (173, 26168),

Gene: Aflac_63 Start: 46335, Stop: 46781, Start Num: 57
Candidate Starts for Aflac_63:
(26, 46263), (37, 46296), (52, 46326), (Start: 57 @46335 has 4 MA's), (Start: 97 @46467 has 1 MA's), (112, 46560), (139, 46668), (146, 46719),

Gene: Aglet_41 Start: 28577, Stop: 28194, Start Num: 75
Candidate Starts for Aglet_41:
(Start: 60 @28604 has 15 MA's), (Start: 75 @28577 has 102 MA's), (Start: 89 @28532 has 6 MA's), (124, 28361), (126, 28349),

Gene: AgronaGT15_40 Start: 28395, Stop: 28012, Start Num: 75
Candidate Starts for AgronaGT15_40:
(Start: 60 @28422 has 15 MA's), (Start: 75 @28395 has 102 MA's), (Start: 84 @28368 has 2 MA's), (Start: 89 @28350 has 6 MA's), (124, 28179), (126, 28167),

Gene: Alsaber_36 Start: 27554, Stop: 27958, Start Num: 74
Candidate Starts for Alsaber_36:
(Start: 74 @27554 has 48 MA's), (91, 27608), (Start: 95 @27641 has 1 MA's), (101, 27674), (151, 27935), (153, 27941),

Gene: Alvy_37 Start: 27037, Stop: 27510, Start Num: 76
Candidate Starts for Alvy_37:
(Start: 76 @27037 has 20 MA's), (Start: 89 @27082 has 6 MA's), (91, 27091), (94, 27115), (101, 27157), (112, 27226), (169, 27478), (172, 27493),

Gene: Amabiko_235 Start: 109135, Stop: 109503, Start Num: 63
Candidate Starts for Amabiko_235:
(Start: 63 @109135 has 23 MA's), (Start: 87 @109195 has 7 MA's), (Start: 92 @109219 has 8 MA's), (99, 109264), (104, 109285), (110, 109306), (116, 109339), (121, 109354), (152, 109489),

Gene: Amela_35 Start: 28386, Stop: 28790, Start Num: 74

Candidate Starts for Amela_35:

(38, 28323), (Start: 74 @28386 has 48 MA's), (Start: 89 @28431 has 6 MA's), (91, 28440), (94, 28464), (104, 28524), (143, 28707), (151, 28767), (153, 28773),

Gene: Amethyst_34 Start: 26390, Stop: 26875, Start Num: 72

Candidate Starts for Amethyst_34:

(Start: 72 @26390 has 11 MA's), (94, 26474), (Start: 97 @26489 has 1 MA's), (140, 26705), (169, 26843), (172, 26858),

Gene: Andris_34 Start: 26452, Stop: 26937, Start Num: 72

Candidate Starts for Andris_34:

(Start: 72 @26452 has 11 MA's), (Start: 89 @26503 has 6 MA's), (94, 26536), (Start: 97 @26551 has 1 MA's), (99, 26575), (107, 26608), (134, 26740), (168, 26896), (169, 26905), (172, 26920),

Gene: Anedea_229 Start: 109741, Stop: 110043, Start Num: 90

Candidate Starts for Anedea_229:

(Start: 87 @109729 has 7 MA's), (Start: 90 @109741 has 12 MA's), (Start: 92 @109753 has 8 MA's), (Start: 97 @109780 has 1 MA's), (104, 109819), (110, 109840), (116, 109873), (121, 109888), (150, 110011), (152, 110023),

Gene: Angela_219 Start: 107471, Stop: 107788, Start Num: 90

Candidate Starts for Angela_219:

(58, 107390), (Start: 87 @107459 has 7 MA's), (Start: 90 @107471 has 12 MA's), (Start: 92 @107483 has 8 MA's), (Start: 97 @107510 has 1 MA's), (104, 107549), (116, 107603), (121, 107618), (146, 107720), (159, 107771), (160, 107774),

Gene: Animus_34 Start: 26897, Stop: 27370, Start Num: 76

Candidate Starts for Animus_34:

(Start: 76 @26897 has 20 MA's), (Start: 89 @26942 has 6 MA's), (91, 26951), (94, 26975), (101, 27017), (132, 27167), (169, 27338), (172, 27353),

Gene: Anubis_43 Start: 28462, Stop: 28079, Start Num: 75

Candidate Starts for Anubis_43:

(Start: 60 @28489 has 15 MA's), (Start: 75 @28462 has 102 MA's), (Start: 89 @28417 has 6 MA's), (124, 28246), (126, 28234),

Gene: Aphelion_145 Start: 79977, Stop: 80369, Start Num: 71

Candidate Starts for Aphelion_145:

(Start: 71 @79977 has 7 MA's), (105, 80118), (147, 80310), (158, 80358),

Gene: Artemis2UCLA_40 Start: 26288, Stop: 25899, Start Num: 75

Candidate Starts for Artemis2UCLA_40:

(Start: 75 @26288 has 102 MA's), (107, 26144), (113, 26099), (126, 26057), (130, 26030),

Gene: Arturo_34 Start: 27863, Stop: 27384, Start Num: 75

Candidate Starts for Arturo_34:

(Start: 75 @27863 has 102 MA's), (147, 27530), (151, 27503),

Gene: Asten_34 Start: 26046, Stop: 26534, Start Num: 59

Candidate Starts for Asten_34:

(11, 25866), (14, 25902), (36, 25998), (Start: 59 @26046 has 35 MA's), (88, 26118), (94, 26154), (103, 26211), (142, 26376), (143, 26382), (169, 26502), (173, 26529),

Gene: AugsMagnumOpus_43 Start: 28568, Stop: 28185, Start Num: 75
Candidate Starts for AugsMagnumOpus_43:
(Start: 60 @28595 has 15 MA's), (Start: 75 @28568 has 102 MA's), (Start: 89 @28523 has 6 MA's),
(124, 28352), (126, 28340),

Gene: Avazak_66 Start: 46911, Stop: 47336, Start Num: 86
Candidate Starts for Avazak_66:
(46, 46821), (Start: 86 @46911 has 1 MA's), (Start: 97 @46971 has 1 MA's), (99, 46992), (108,
47028), (112, 47064), (130, 47148), (152, 47256), (166, 47304), (168, 47307), (171, 47328),

Gene: B1_34 Start: 27319, Stop: 26933, Start Num: 74
Candidate Starts for B1_34:
(Start: 74 @27319 has 48 MA's),

Gene: BABullseye_40 Start: 26694, Stop: 26302, Start Num: 73
Candidate Starts for BABullseye_40:
(Start: 73 @26694 has 21 MA's), (107, 26547), (113, 26502), (126, 26460), (130, 26433),

Gene: BabyRay_36 Start: 27870, Stop: 27484, Start Num: 74
Candidate Starts for BabyRay_36:
(Start: 74 @27870 has 48 MA's), (117, 27672),

Gene: BangNhom_36 Start: 28100, Stop: 27660, Start Num: 75
Candidate Starts for BangNhom_36:
(Start: 75 @28100 has 102 MA's), (151, 27740), (152, 27737),

Gene: BarryBee_37 Start: 26056, Stop: 26544, Start Num: 59
Candidate Starts for BarryBee_37:
(11, 25876), (14, 25912), (36, 26008), (Start: 59 @26056 has 35 MA's), (88, 26128), (94, 26164),
(Start: 95 @26173 has 1 MA's), (103, 26221), (142, 26386), (143, 26392), (169, 26512), (173, 26539),

Gene: BartholomewSD_37 Start: 27037, Stop: 27510, Start Num: 76
Candidate Starts for BartholomewSD_37:
(Start: 76 @27037 has 20 MA's), (Start: 89 @27082 has 6 MA's), (91, 27091), (94, 27115), (101,
27157), (112, 27226), (169, 27478), (172, 27493),

Gene: Bartholomune_217 Start: 107720, Stop: 108022, Start Num: 90
Candidate Starts for Bartholomune_217:
(Start: 87 @107708 has 7 MA's), (Start: 90 @107720 has 12 MA's), (Start: 92 @107732 has 8 MA's),
(104, 107798), (110, 107819), (121, 107867), (128, 107894), (132, 107912), (152, 108002),

Gene: Battuta_229 Start: 108450, Stop: 108818, Start Num: 63
Candidate Starts for Battuta_229:
(Start: 63 @108450 has 23 MA's), (Start: 87 @108510 has 7 MA's), (Start: 92 @108534 has 8 MA's),
(104, 108600), (110, 108621), (116, 108654), (121, 108669), (152, 108804),

Gene: BeardedLady_35 Start: 25938, Stop: 26426, Start Num: 59
Candidate Starts for BeardedLady_35:
(Start: 59 @25938 has 35 MA's), (88, 26010), (Start: 95 @26055 has 1 MA's), (112, 26157), (143,
26274), (169, 26394), (173, 26421),

Gene: Beauxregard13_41 Start: 28603, Stop: 28193, Start Num: 60

Candidate Starts for Beauxregard13_41:

(Start: 60 @28603 has 15 MA's), (Start: 75 @28576 has 102 MA's), (Start: 89 @28531 has 6 MA's), (124, 28360), (126, 28348),

Gene: Birchlyn_230 Start: 106383, Stop: 106751, Start Num: 63

Candidate Starts for Birchlyn_230:

(Start: 63 @106383 has 23 MA's), (Start: 87 @106443 has 7 MA's), (Start: 92 @106467 has 8 MA's), (99, 106512), (104, 106533), (110, 106554), (116, 106587), (121, 106602), (152, 106737),

Gene: Blinn1_41 Start: 26683, Stop: 26291, Start Num: 73

Candidate Starts for Blinn1_41:

(Start: 73 @26683 has 21 MA's), (107, 26536), (113, 26491), (126, 26449), (130, 26422),

Gene: Blue7_41 Start: 26619, Stop: 26230, Start Num: 73

Candidate Starts for Blue7_41:

(Start: 73 @26619 has 21 MA's), (126, 26388), (130, 26361), (151, 26256),

Gene: BlueBird_37 Start: 27799, Stop: 27413, Start Num: 74

Candidate Starts for BlueBird_37:

(Start: 74 @27799 has 48 MA's), (117, 27601),

Gene: BlueOtter_218 Start: 107854, Stop: 108144, Start Num: 92

Candidate Starts for BlueOtter_218:

(Start: 87 @107830 has 7 MA's), (Start: 90 @107842 has 12 MA's), (Start: 92 @107854 has 8 MA's), (104, 107920), (116, 107974), (121, 107989), (152, 108124),

Gene: Bmoc_221 Start: 107925, Stop: 108239, Start Num: 87

Candidate Starts for Bmoc_221:

(Start: 87 @107925 has 7 MA's), (Start: 90 @107937 has 12 MA's), (Start: 92 @107949 has 8 MA's), (Start: 97 @107976 has 1 MA's), (98, 107991), (104, 108015), (110, 108036), (116, 108069), (121, 108084), (150, 108207), (152, 108219),

Gene: Boilgate_73 Start: 53314, Stop: 53607, Start Num: 96

Candidate Starts for Boilgate_73:

(81, 53242), (Start: 96 @53314 has 2 MA's), (111, 53398), (143, 53524),

Gene: BoomerJR_228 Start: 109040, Stop: 109408, Start Num: 63

Candidate Starts for BoomerJR_228:

(48, 109007), (56, 109025), (Start: 63 @109040 has 23 MA's), (Start: 87 @109100 has 7 MA's), (Start: 92 @109124 has 8 MA's), (Start: 95 @109145 has 1 MA's), (104, 109190), (116, 109244), (121, 109259),

Gene: Bordeaux_229 Start: 109033, Stop: 109401, Start Num: 63

Candidate Starts for Bordeaux_229:

(Start: 63 @109033 has 23 MA's), (Start: 87 @109093 has 7 MA's), (Start: 92 @109117 has 8 MA's), (104, 109183), (110, 109204), (116, 109237), (121, 109252), (152, 109387),

Gene: Bovely_34 Start: 25691, Stop: 26179, Start Num: 59

Candidate Starts for Bovely_34:

(36, 25643), (Start: 59 @25691 has 35 MA's), (88, 25763), (Start: 95 @25808 has 1 MA's), (112, 25910), (143, 26027), (169, 26147), (173, 26174),

Gene: Bowden_35 Start: 26947, Stop: 27420, Start Num: 76

Candidate Starts for Bowden_35:

(Start: 76 @26947 has 20 MA's), (Start: 89 @26992 has 6 MA's), (91, 27001), (94, 27025), (101, 27067), (112, 27136), (169, 27388), (172, 27403),

Gene: Braelyn_213 Start: 107367, Stop: 107669, Start Num: 90

Candidate Starts for Braelyn_213:

(Start: 87 @107355 has 7 MA's), (Start: 90 @107367 has 12 MA's), (Start: 92 @107379 has 8 MA's), (104, 107445), (110, 107466), (121, 107514), (128, 107541), (132, 107559), (152, 107649),

Gene: Brataylor_37 Start: 27039, Stop: 27515, Start Num: 76

Candidate Starts for Brataylor_37:

(36, 26973), (Start: 72 @27033 has 11 MA's), (Start: 76 @27039 has 20 MA's), (94, 27117), (Start: 97 @27132 has 1 MA's), (135, 27327), (152, 27426), (169, 27483), (172, 27498), (173, 27510),

Gene: BreSam8_41 Start: 28569, Stop: 28186, Start Num: 75

Candidate Starts for BreSam8_41:

(Start: 60 @28596 has 15 MA's), (Start: 75 @28569 has 102 MA's), (Start: 89 @28524 has 6 MA's), (124, 28353), (126, 28341),

Gene: BroPlease_35 Start: 26228, Stop: 26704, Start Num: 76

Candidate Starts for BroPlease_35:

(Start: 76 @26228 has 20 MA's), (Start: 89 @26273 has 6 MA's), (94, 26306), (Start: 95 @26315 has 1 MA's), (98, 26339), (142, 26543), (169, 26672),

Gene: BryanRecycles_35 Start: 26042, Stop: 26530, Start Num: 59

Candidate Starts for BryanRecycles_35:

(21, 25937), (36, 25994), (Start: 59 @26042 has 35 MA's), (88, 26114), (Start: 95 @26159 has 1 MA's), (112, 26261), (143, 26378), (169, 26498), (173, 26525),

Gene: Bugatti_36 Start: 27799, Stop: 27413, Start Num: 74

Candidate Starts for Bugatti_36:

(Start: 74 @27799 has 48 MA's), (117, 27601),

Gene: Burley_64 Start: 46068, Stop: 46514, Start Num: 57

Candidate Starts for Burley_64:

(28, 46002), (41, 46038), (52, 46059), (Start: 57 @46068 has 4 MA's), (Start: 97 @46197 has 1 MA's), (112, 46290), (139, 46398), (146, 46449),

Gene: BuzzBuzz_39 Start: 28574, Stop: 28191, Start Num: 75

Candidate Starts for BuzzBuzz_39:

(Start: 60 @28601 has 15 MA's), (Start: 75 @28574 has 102 MA's), (Start: 84 @28547 has 2 MA's), (Start: 89 @28529 has 6 MA's), (124, 28358), (126, 28346),

Gene: Bxz2_38 Start: 28581, Stop: 28198, Start Num: 75

Candidate Starts for Bxz2_38:

(Start: 60 @28608 has 15 MA's), (Start: 75 @28581 has 102 MA's), (Start: 84 @28554 has 2 MA's), (Start: 89 @28536 has 6 MA's), (124, 28365), (126, 28353),

Gene: C3_35 Start: 28082, Stop: 27666, Start Num: 74

Candidate Starts for C3_35:

(7, 28370), (Start: 74 @28082 has 48 MA's), (126, 27851), (151, 27719), (159, 27698), (164, 27680),

Gene: Caelum_36 Start: 26653, Stop: 27126, Start Num: 76

Candidate Starts for Caelum_36:

(Start: 76 @26653 has 20 MA's), (Start: 89 @26698 has 6 MA's), (91, 26707), (94, 26731), (Start: 95 @26740 has 1 MA's), (101, 26773), (132, 26923), (142, 26968), (169, 27094), (170, 27103), (172, 27109),

Gene: Caliburn_34 Start: 25785, Stop: 26156, Start Num: 95

Candidate Starts for Caliburn_34:

(36, 25620), (Start: 59 @25668 has 35 MA's), (88, 25740), (Start: 95 @25785 has 1 MA's), (112, 25887), (143, 26004), (169, 26124), (173, 26151),

Gene: Captrips_66 Start: 46053, Stop: 46484, Start Num: 84

Candidate Starts for Captrips_66:

(46, 45969), (Start: 84 @46053 has 2 MA's), (Start: 86 @46059 has 1 MA's), (Start: 97 @46119 has 1 MA's), (99, 46140), (108, 46176), (112, 46212), (130, 46296), (152, 46404), (166, 46452), (168, 46455), (171, 46476),

Gene: Caviar_35 Start: 27809, Stop: 27381, Start Num: 77

Candidate Starts for Caviar_35:

(Start: 75 @27812 has 102 MA's), (Start: 77 @27809 has 6 MA's), (Start: 89 @27764 has 6 MA's), (112, 27626), (152, 27449),

Gene: CeilingFan_243 Start: 109828, Stop: 110196, Start Num: 63

Candidate Starts for CeilingFan_243:

(Start: 63 @109828 has 23 MA's), (Start: 87 @109888 has 7 MA's), (Start: 92 @109912 has 8 MA's), (104, 109978), (110, 109999), (116, 110032), (121, 110047), (152, 110182),

Gene: Celery_38 Start: 27479, Stop: 27883, Start Num: 74

Candidate Starts for Celery_38:

(Start: 74 @27479 has 48 MA's), (Start: 89 @27524 has 6 MA's), (91, 27533), (94, 27557), (Start: 95 @27566 has 1 MA's), (101, 27599), (143, 27800), (151, 27860), (153, 27866),

Gene: Celeste_35 Start: 26508, Stop: 26984, Start Num: 76

Candidate Starts for Celeste_35:

(36, 26442), (Start: 72 @26502 has 11 MA's), (Start: 76 @26508 has 20 MA's), (94, 26586), (Start: 97 @26601 has 1 MA's), (135, 26796), (152, 26895), (169, 26952),

Gene: Cerulean_37 Start: 28101, Stop: 27661, Start Num: 75

Candidate Starts for Cerulean_37:

(Start: 75 @28101 has 102 MA's), (151, 27741), (152, 27738),

Gene: ChampagnePapi_37 Start: 28100, Stop: 27660, Start Num: 75

Candidate Starts for ChampagnePapi_37:

(Start: 75 @28100 has 102 MA's), (151, 27740), (152, 27737),

Gene: Chucky_34 Start: 26060, Stop: 26548, Start Num: 59

Candidate Starts for Chucky_34:

(11, 25880), (14, 25916), (36, 26012), (Start: 59 @26060 has 35 MA's), (88, 26132), (94, 26168), (Start: 95 @26177 has 1 MA's), (103, 26225), (142, 26390), (143, 26396), (169, 26516), (173, 26543),

Gene: CloudWang3_40 Start: 26388, Stop: 25999, Start Num: 75

Candidate Starts for CloudWang3_40:

(Start: 75 @26388 has 102 MA's), (107, 26244), (113, 26199), (126, 26157), (130, 26130),

Gene: Conan_38 Start: 27448, Stop: 27852, Start Num: 74

Candidate Starts for Conan_38:

(11, 27253), (14, 27289), (38, 27388), (Start: 74 @27448 has 48 MA's), (91, 27502), (Start: 95 @27535 has 1 MA's), (101, 27568), (151, 27829), (153, 27835),

Gene: Cookiedough_40 Start: 26610, Stop: 26218, Start Num: 73

Candidate Starts for Cookiedough_40:

(Start: 73 @26610 has 21 MA's), (107, 26463), (113, 26418), (126, 26376), (130, 26349),

Gene: Cross_216 Start: 108499, Stop: 108789, Start Num: 92

Candidate Starts for Cross_216:

(Start: 87 @108475 has 7 MA's), (Start: 90 @108487 has 12 MA's), (Start: 92 @108499 has 8 MA's), (104, 108565), (116, 108619), (121, 108634), (152, 108769),

Gene: Cucurbita_145 Start: 80440, Stop: 80829, Start Num: 71

Candidate Starts for Cucurbita_145:

(Start: 71 @80440 has 7 MA's), (105, 80578), (152, 80800), (158, 80818),

Gene: Cullens_41 Start: 28575, Stop: 28192, Start Num: 75

Candidate Starts for Cullens_41:

(Start: 60 @28602 has 15 MA's), (Start: 75 @28575 has 102 MA's), (Start: 89 @28530 has 6 MA's), (124, 28359), (126, 28347),

Gene: Culver_146 Start: 78704, Stop: 79093, Start Num: 71

Candidate Starts for Culver_146:

(Start: 71 @78704 has 7 MA's), (105, 78842), (152, 79064), (158, 79082),

Gene: Cursive_219 Start: 108171, Stop: 108473, Start Num: 90

Candidate Starts for Cursive_219:

(Start: 87 @108159 has 7 MA's), (Start: 90 @108171 has 12 MA's), (Start: 92 @108183 has 8 MA's), (104, 108249), (116, 108303), (121, 108318), (152, 108453),

Gene: D29_36.1 Start: 27983, Stop: 27597, Start Num: 74

Candidate Starts for D29_36.1:

(Start: 74 @27983 has 48 MA's), (126, 27752),

Gene: D32_40 Start: 27983, Stop: 27597, Start Num: 74

Candidate Starts for D32_40:

(Start: 74 @27983 has 48 MA's), (126, 27752),

Gene: DBQu4n_40 Start: 27983, Stop: 27597, Start Num: 74

Candidate Starts for DBQu4n_40:

(Start: 74 @27983 has 48 MA's), (126, 27752),

Gene: DaHudson_41 Start: 28568, Stop: 28185, Start Num: 75

Candidate Starts for DaHudson_41:

(Start: 60 @28595 has 15 MA's), (Start: 75 @28568 has 102 MA's), (Start: 89 @28523 has 6 MA's), (124, 28352), (126, 28340),

Gene: Daishi_39 Start: 27415, Stop: 27032, Start Num: 75

Candidate Starts for Daishi_39:

(Start: 60 @27442 has 15 MA's), (Start: 75 @27415 has 102 MA's), (Start: 84 @27388 has 2 MA's), (Start: 89 @27370 has 6 MA's), (124, 27199), (126, 27187),

Gene: Danzina_36 Start: 26809, Stop: 27285, Start Num: 76

Candidate Starts for Danzina_36:

(36, 26743), (Start: 72 @26803 has 11 MA's), (Start: 76 @26809 has 20 MA's), (94, 26887), (Start: 97 @26902 has 1 MA's), (135, 27097), (152, 27196), (169, 27253), (172, 27268), (173, 27280),

Gene: Dattran_36 Start: 26615, Stop: 27091, Start Num: 76

Candidate Starts for Dattran_36:

(36, 26549), (Start: 72 @26609 has 11 MA's), (Start: 76 @26615 has 20 MA's), (94, 26693), (Start: 97 @26708 has 1 MA's), (135, 26903), (152, 27002), (169, 27059),

Gene: Daubenski_210 Start: 108498, Stop: 108872, Start Num: 65

Candidate Starts for Daubenski_210:

(22, 108396), (50, 108471), (61, 108495), (Start: 65 @108498 has 1 MA's), (Start: 86 @108552 has 1 MA's), (Start: 87 @108558 has 7 MA's), (Start: 92 @108582 has 8 MA's), (Start: 97 @108609 has 1 MA's), (104, 108648), (121, 108717), (141, 108783), (148, 108831), (152, 108852),

Gene: Daudau_35 Start: 26779, Stop: 27237, Start Num: 67

Candidate Starts for Daudau_35:

(48, 26740), (Start: 67 @26779 has 5 MA's), (Start: 89 @26824 has 6 MA's), (94, 26857), (Start: 95 @26866 has 1 MA's), (Start: 96 @26869 has 2 MA's), (142, 27079), (143, 27085), (147, 27118), (169, 27205), (172, 27220),

Gene: Dennebes_58 Start: 29550, Stop: 29158, Start Num: 85

Candidate Starts for Dennebes_58:

(Start: 79 @29577 has 13 MA's), (Start: 85 @29550 has 1 MA's), (94, 29505), (137, 29295),

Gene: Dexers_34 Start: 27476, Stop: 27880, Start Num: 74

Candidate Starts for Dexers_34:

(Start: 74 @27476 has 48 MA's), (91, 27530), (Start: 95 @27563 has 1 MA's), (101, 27596), (151, 27857), (153, 27863),

Gene: Diane_34 Start: 26663, Stop: 27148, Start Num: 72

Candidate Starts for Diane_34:

(Start: 72 @26663 has 11 MA's), (94, 26747), (Start: 97 @26762 has 1 MA's), (140, 26978), (169, 27116), (172, 27131),

Gene: Dieselweasel_41 Start: 28578, Stop: 28195, Start Num: 75

Candidate Starts for Dieselweasel_41:

(Start: 60 @28605 has 15 MA's), (Start: 75 @28578 has 102 MA's), (Start: 89 @28533 has 6 MA's), (124, 28362), (126, 28350),

Gene: Dryad_75 Start: 51427, Stop: 51068, Start Num: 89

Candidate Starts for Dryad_75:

(Start: 66 @51487 has 3 MA's), (Start: 89 @51427 has 6 MA's), (94, 51394), (141, 51175),

Gene: Duplo_40 Start: 28021, Stop: 27635, Start Num: 74

Candidate Starts for Duplo_40:

(Start: 74 @28021 has 48 MA's), (126, 27790),

Gene: Dwayne_34 Start: 26047, Stop: 26535, Start Num: 59

Candidate Starts for Dwayne_34:

(11, 25867), (14, 25903), (36, 25999), (Start: 59 @26047 has 35 MA's), (88, 26119), (94, 26155), (Start: 95 @26164 has 1 MA's), (103, 26212), (142, 26377), (143, 26383), (169, 26503), (173, 26530),

Gene: EGole_220 Start: 110229, Stop: 110519, Start Num: 92

Candidate Starts for EGole_220:

(Start: 87 @110205 has 7 MA's), (Start: 90 @110217 has 12 MA's), (Start: 92 @110229 has 8 MA's), (104, 110295), (116, 110349), (121, 110364), (152, 110499),

Gene: ELB20_33 Start: 27045, Stop: 27530, Start Num: 72

Candidate Starts for ELB20_33:

(Start: 72 @27045 has 11 MA's), (94, 27129), (Start: 97 @27144 has 1 MA's), (107, 27201), (134, 27333), (142, 27372), (169, 27498), (172, 27513),

Gene: Eddasa_35 Start: 26042, Stop: 26530, Start Num: 59

Candidate Starts for Eddasa_35:

(21, 25937), (36, 25994), (Start: 59 @26042 has 35 MA's), (88, 26114), (Start: 95 @26159 has 1 MA's), (112, 26261), (143, 26378), (169, 26498), (173, 26525),

Gene: Ejemplo_33 Start: 25988, Stop: 26476, Start Num: 59

Candidate Starts for Ejemplo_33:

(13, 25820), (34, 25937), (Start: 59 @25988 has 35 MA's), (88, 26060), (94, 26096), (Start: 95 @26105 has 1 MA's), (103, 26153), (142, 26318), (143, 26324), (169, 26444), (173, 26471),

Gene: ElGato_37 Start: 27112, Stop: 27516, Start Num: 74

Candidate Starts for ElGato_37:

(11, 26917), (38, 27052), (Start: 74 @27112 has 48 MA's), (91, 27166), (Start: 95 @27199 has 1 MA's), (101, 27232), (151, 27493), (153, 27499),

Gene: Elmer_247 Start: 112676, Stop: 112984, Start Num: 87

Candidate Starts for Elmer_247:

(26, 112526), (27, 112535), (30, 112541), (31, 112556), (35, 112562), (54, 112598), (56, 112604), (Start: 87 @112676 has 7 MA's), (Start: 92 @112700 has 8 MA's), (Start: 95 @112721 has 1 MA's), (104, 112766), (116, 112820), (121, 112835), (151, 112967),

Gene: Emaanora_37 Start: 26005, Stop: 26493, Start Num: 59

Candidate Starts for Emaanora_37:

(11, 25825), (14, 25861), (36, 25957), (Start: 59 @26005 has 35 MA's), (88, 26077), (94, 26113), (Start: 95 @26122 has 1 MA's), (103, 26170), (142, 26335), (143, 26341), (169, 26461), (173, 26488),

Gene: EnochSoames_37 Start: 26037, Stop: 26525, Start Num: 59

Candidate Starts for EnochSoames_37:

(21, 25932), (36, 25989), (Start: 59 @26037 has 35 MA's), (88, 26109), (Start: 95 @26154 has 1 MA's), (112, 26256), (143, 26373), (169, 26493), (173, 26520),

Gene: Enygma_238 Start: 111845, Stop: 112213, Start Num: 63

Candidate Starts for Enygma_238:

(18, 111707), (24, 111749), (26, 111752), (33, 111785), (48, 111812), (56, 111830), (Start: 63 @111845 has 23 MA's), (Start: 87 @111905 has 7 MA's), (Start: 89 @111911 has 6 MA's), (Start: 92 @111929 has 8 MA's), (104, 111995), (116, 112049), (121, 112064), (152, 112199),

Gene: EpicPhail_41 Start: 28576, Stop: 28193, Start Num: 75

Candidate Starts for EpicPhail_41:

(Start: 60 @28603 has 15 MA's), (Start: 75 @28576 has 102 MA's), (Start: 89 @28531 has 6 MA's),
(124, 28360), (126, 28348),

Gene: Esperer_34 Start: 25504, Stop: 25992, Start Num: 59

Candidate Starts for Esperer_34:

(36, 25456), (Start: 59 @25504 has 35 MA's), (88, 25576), (Start: 95 @25621 has 1 MA's), (112,
25723), (143, 25840), (169, 25960), (173, 25987),

Gene: Evy_207 Start: 108670, Stop: 108960, Start Num: 92

Candidate Starts for Evy_207:

(Start: 87 @108646 has 7 MA's), (Start: 90 @108658 has 12 MA's), (Start: 92 @108670 has 8 MA's),
(104, 108736), (116, 108790), (121, 108805), (152, 108940),

Gene: Fabian_51 Start: 29095, Stop: 28676, Start Num: 79

Candidate Starts for Fabian_51:

(Start: 79 @29095 has 13 MA's), (Start: 85 @29068 has 1 MA's), (94, 29023), (137, 28813),

Gene: Farber_41 Start: 28569, Stop: 28186, Start Num: 75

Candidate Starts for Farber_41:

(Start: 60 @28596 has 15 MA's), (Start: 75 @28569 has 102 MA's), (Start: 89 @28524 has 6 MA's),
(124, 28353), (126, 28341),

Gene: Fernando_41 Start: 28575, Stop: 28192, Start Num: 75

Candidate Starts for Fernando_41:

(Start: 60 @28602 has 15 MA's), (Start: 75 @28575 has 102 MA's), (Start: 89 @28530 has 6 MA's),
(124, 28359), (126, 28347),

Gene: FortCran_69 Start: 46578, Stop: 47009, Start Num: 84

Candidate Starts for FortCran_69:

(46, 46494), (Start: 84 @46578 has 2 MA's), (Start: 86 @46584 has 1 MA's), (Start: 97 @46644 has 1
MA's), (99, 46665), (108, 46701), (112, 46737), (130, 46821), (152, 46929), (156, 46944), (166,
46977), (168, 46980), (171, 47001),

Gene: Fred313_36 Start: 27551, Stop: 27165, Start Num: 74

Candidate Starts for Fred313_36:

(Start: 74 @27551 has 48 MA's), (117, 27353),

Gene: Gemma_40 Start: 28397, Stop: 28014, Start Num: 75

Candidate Starts for Gemma_40:

(9, 28625), (Start: 60 @28424 has 15 MA's), (Start: 75 @28397 has 102 MA's), (Start: 89 @28352 has
6 MA's), (124, 28181), (126, 28169),

Gene: Genie2_228 Start: 109165, Stop: 109533, Start Num: 63

Candidate Starts for Genie2_228:

(48, 109132), (56, 109150), (Start: 63 @109165 has 23 MA's), (Start: 87 @109225 has 7 MA's), (Start:
92 @109249 has 8 MA's), (Start: 95 @109270 has 1 MA's), (104, 109315), (116, 109369), (121,
109384),

Gene: Gibbi_239 Start: 109321, Stop: 109689, Start Num: 63

Candidate Starts for Gibbi_239:

(Start: 63 @109321 has 23 MA's), (Start: 87 @109381 has 7 MA's), (Start: 92 @109405 has 8 MA's),
(104, 109471), (110, 109492), (116, 109525), (121, 109540), (152, 109675),

Gene: Gibson_71 Start: 50674, Stop: 50318, Start Num: 89

Candidate Starts for Gibson_71:

(Start: 66 @50734 has 3 MA's), (Start: 82 @50698 has 2 MA's), (Start: 86 @50686 has 1 MA's), (Start: 89 @50674 has 6 MA's), (Start: 90 @50668 has 12 MA's), (93, 50653), (Start: 95 @50632 has 1 MA's), (127, 50476), (131, 50452), (143, 50413), (144, 50410), (154, 50356), (159, 50347),

Gene: GingkoMaracino_41 Start: 28489, Stop: 28079, Start Num: 60

Candidate Starts for GingkoMaracino_41:

(Start: 60 @28489 has 15 MA's), (Start: 75 @28462 has 102 MA's), (Start: 89 @28417 has 6 MA's), (124, 28246), (126, 28234),

Gene: GirlDinner_36 Start: 26398, Stop: 26871, Start Num: 76

Candidate Starts for GirlDinner_36:

(Start: 76 @26398 has 20 MA's), (Start: 89 @26443 has 6 MA's), (91, 26452), (94, 26476), (101, 26518), (132, 26668), (169, 26839), (172, 26854),

Gene: Gladiator_40 Start: 26599, Stop: 26207, Start Num: 73

Candidate Starts for Gladiator_40:

(Start: 73 @26599 has 21 MA's), (107, 26452), (113, 26407), (126, 26365), (130, 26338),

Gene: Goby_34 Start: 26511, Stop: 26990, Start Num: 74

Candidate Starts for Goby_34:

(Start: 74 @26511 has 48 MA's), (94, 26592), (Start: 97 @26607 has 1 MA's), (135, 26802), (169, 26958), (172, 26973),

Gene: Godpower_35 Start: 26506, Stop: 26985, Start Num: 74

Candidate Starts for Godpower_35:

(Start: 74 @26506 has 48 MA's), (94, 26587), (Start: 97 @26602 has 1 MA's), (135, 26797), (169, 26953), (172, 26968),

Gene: Grayson_194 Start: 100750, Stop: 101079, Start Num: 84

Candidate Starts for Grayson_194:

(Start: 84 @100750 has 2 MA's), (Start: 90 @100774 has 12 MA's), (106, 100861), (120, 100918), (142, 101002),

Gene: Grif_41 Start: 28650, Stop: 28267, Start Num: 75

Candidate Starts for Grif_41:

(Start: 60 @28677 has 15 MA's), (Start: 75 @28650 has 102 MA's), (Start: 89 @28605 has 6 MA's), (124, 28434), (126, 28422),

Gene: Groupthink_41 Start: 28401, Stop: 28018, Start Num: 75

Candidate Starts for Groupthink_41:

(9, 28629), (Start: 60 @28428 has 15 MA's), (Start: 75 @28401 has 102 MA's), (Start: 89 @28356 has 6 MA's), (124, 28185), (126, 28173),

Gene: Grub_41 Start: 28595, Stop: 28185, Start Num: 60

Candidate Starts for Grub_41:

(Start: 60 @28595 has 15 MA's), (Start: 75 @28568 has 102 MA's), (Start: 89 @28523 has 6 MA's), (124, 28352), (126, 28340),

Gene: Grum1_41 Start: 28602, Stop: 28192, Start Num: 60

Candidate Starts for Grum1_41:

(Start: 60 @28602 has 15 MA's), (Start: 75 @28575 has 102 MA's), (Start: 89 @28530 has 6 MA's), (124, 28359), (126, 28347),

Gene: Gruunaga_40 Start: 26598, Stop: 26206, Start Num: 73

Candidate Starts for Gruunaga_40:

(Start: 73 @26598 has 21 MA's), (107, 26451), (113, 26406), (126, 26364), (130, 26337),

Gene: GtownJaz_41 Start: 28577, Stop: 28194, Start Num: 75

Candidate Starts for GtownJaz_41:

(Start: 60 @28604 has 15 MA's), (Start: 75 @28577 has 102 MA's), (Start: 89 @28532 has 6 MA's), (124, 28361), (126, 28349),

Gene: HINdeR_35 Start: 29947, Stop: 29549, Start Num: 60

Candidate Starts for HINdeR_35:

(Start: 60 @29947 has 15 MA's), (126, 29719), (142, 29653), (151, 29587), (162, 29557),

Gene: Haizum_36 Start: 26732, Stop: 27217, Start Num: 72

Candidate Starts for Haizum_36:

(Start: 72 @26732 has 11 MA's), (94, 26816), (Start: 97 @26831 has 1 MA's), (140, 27047), (169, 27185), (172, 27200),

Gene: Hammer_40 Start: 26429, Stop: 26040, Start Num: 73

Candidate Starts for Hammer_40:

(Start: 73 @26429 has 21 MA's), (126, 26198), (130, 26171), (151, 26066),

Gene: HangryHippo_218 Start: 107854, Stop: 108144, Start Num: 92

Candidate Starts for HangryHippo_218:

(Start: 87 @107830 has 7 MA's), (Start: 90 @107842 has 12 MA's), (Start: 92 @107854 has 8 MA's), (104, 107920), (116, 107974), (121, 107989), (152, 108124),

Gene: Hank144_36 Start: 26811, Stop: 27266, Start Num: 67

Candidate Starts for Hank144_36:

(Start: 67 @26811 has 5 MA's), (Start: 86 @26844 has 1 MA's), (Start: 89 @26856 has 6 MA's), (94, 26889), (Start: 95 @26898 has 1 MA's), (143, 27117), (169, 27234), (172, 27249),

Gene: HashRod_41 Start: 28574, Stop: 28191, Start Num: 75

Candidate Starts for HashRod_41:

(Start: 60 @28601 has 15 MA's), (Start: 75 @28574 has 102 MA's), (Start: 84 @28547 has 2 MA's), (Start: 89 @28529 has 6 MA's), (124, 28358), (126, 28346),

Gene: HaugeAnator_54 Start: 29438, Stop: 29022, Start Num: 79

Candidate Starts for HaugeAnator_54:

(Start: 57 @29480 has 4 MA's), (Start: 79 @29438 has 13 MA's), (Start: 97 @29351 has 1 MA's), (114, 29255), (115, 29252), (118, 29246), (133, 29168),

Gene: HaveUMetTed_41 Start: 28394, Stop: 28011, Start Num: 75

Candidate Starts for HaveUMetTed_41:

(Start: 60 @28421 has 15 MA's), (Start: 75 @28394 has 102 MA's), (Start: 89 @28349 has 6 MA's), (124, 28178), (126, 28166),

Gene: Heathen_36 Start: 27607, Stop: 27221, Start Num: 74

Candidate Starts for Heathen_36:

(Start: 74 @27607 has 48 MA's), (117, 27409),

Gene: HelDan_36 Start: 27859, Stop: 27473, Start Num: 74

Candidate Starts for HelDan_36:

(Start: 74 @27859 has 48 MA's), (117, 27661),

Gene: Heliosoles_40 Start: 28401, Stop: 28018, Start Num: 75

Candidate Starts for Heliosoles_40:

(9, 28632), (Start: 60 @28428 has 15 MA's), (Start: 75 @28401 has 102 MA's), (Start: 89 @28356 has 6 MA's), (124, 28185), (126, 28173),

Gene: Hercules11_41 Start: 28611, Stop: 28201, Start Num: 60

Candidate Starts for Hercules11_41:

(Start: 60 @28611 has 15 MA's), (Start: 75 @28584 has 102 MA's), (Start: 89 @28539 has 6 MA's), (124, 28368), (126, 28356),

Gene: Hexamo_40 Start: 26376, Stop: 25987, Start Num: 75

Candidate Starts for Hexamo_40:

(Start: 75 @26376 has 102 MA's), (107, 26232), (113, 26187), (126, 26145), (130, 26118),

Gene: Hippo_34 Start: 26056, Stop: 26544, Start Num: 59

Candidate Starts for Hippo_34:

(11, 25876), (14, 25912), (36, 26008), (Start: 59 @26056 has 35 MA's), (88, 26128), (94, 26164), (Start: 95 @26173 has 1 MA's), (103, 26221), (112, 26275), (131, 26350), (142, 26386), (143, 26392), (169, 26512), (173, 26539),

Gene: Hookmount_35 Start: 27810, Stop: 27382, Start Num: 77

Candidate Starts for Hookmount_35:

(Start: 75 @27813 has 102 MA's), (Start: 77 @27810 has 6 MA's), (Start: 89 @27765 has 6 MA's), (112, 27627), (152, 27450),

Gene: Hoot_40 Start: 26594, Stop: 26202, Start Num: 73

Candidate Starts for Hoot_40:

(Start: 73 @26594 has 21 MA's), (107, 26447), (113, 26402), (126, 26360), (130, 26333),

Gene: Hydra_36 Start: 26216, Stop: 26704, Start Num: 59

Candidate Starts for Hydra_36:

(36, 26168), (Start: 59 @26216 has 35 MA's), (88, 26288), (Start: 95 @26333 has 1 MA's), (112, 26435), (143, 26552), (169, 26672), (173, 26699),

Gene: Ibantik_13 Start: 5594, Stop: 5154, Start Num: 70

Candidate Starts for Ibantik_13:

(Start: 70 @5594 has 1 MA's), (143, 5291), (165, 5186),

Gene: IchabodCrane_225 Start: 108836, Stop: 109204, Start Num: 63

Candidate Starts for IchabodCrane_225:

(Start: 63 @108836 has 23 MA's), (Start: 87 @108896 has 7 MA's), (Start: 92 @108920 has 8 MA's), (99, 108965), (104, 108986), (110, 109007), (116, 109040), (121, 109055), (152, 109190),

Gene: Idleandcovert_36 Start: 27799, Stop: 27413, Start Num: 74

Candidate Starts for Idleandcovert_36:

(Start: 74 @27799 has 48 MA's), (117, 27601),

Gene: Immanuel3_53 Start: 29441, Stop: 29025, Start Num: 79

Candidate Starts for Immanuel3_53:

(Start: 57 @29483 has 4 MA's), (Start: 79 @29441 has 13 MA's), (Start: 97 @29354 has 1 MA's), (103, 29315), (112, 29264), (118, 29249), (119, 29243),

Gene: Indigo_33 Start: 25684, Stop: 26172, Start Num: 59

Candidate Starts for Indigo_33:

(36, 25636), (Start: 59 @25684 has 35 MA's), (88, 25756), (Start: 95 @25801 has 1 MA's), (112, 25903), (143, 26020), (169, 26140), (173, 26167),

Gene: Indra_42 Start: 26618, Stop: 26226, Start Num: 73

Candidate Starts for Indra_42:

(Start: 73 @26618 has 21 MA's), (107, 26471), (113, 26426), (126, 26384), (130, 26357),

Gene: Iracema64_36 Start: 28062, Stop: 27583, Start Num: 75

Candidate Starts for Iracema64_36:

(Start: 75 @28062 has 102 MA's), (147, 27729), (151, 27702),

Gene: Isca_36 Start: 27568, Stop: 27182, Start Num: 74

Candidate Starts for Isca_36:

(Start: 74 @27568 has 48 MA's),

Gene: Isiphiwo_40 Start: 26688, Stop: 26296, Start Num: 73

Candidate Starts for Isiphiwo_40:

(Start: 73 @26688 has 21 MA's), (107, 26541), (113, 26496), (126, 26454), (130, 26427), (131, 26424),

Gene: Issmi_36 Start: 27365, Stop: 27823, Start Num: 67

Candidate Starts for Issmi_36:

(Start: 67 @27365 has 5 MA's), (Start: 89 @27410 has 6 MA's), (94, 27443), (Start: 95 @27452 has 1 MA's), (142, 27665), (143, 27671), (147, 27704), (169, 27791), (172, 27806),

Gene: Izzy_35 Start: 26089, Stop: 26577, Start Num: 59

Candidate Starts for Izzy_35:

(21, 25984), (36, 26041), (Start: 59 @26089 has 35 MA's), (88, 26161), (Start: 95 @26206 has 1 MA's), (112, 26308), (143, 26425), (169, 26545), (173, 26572),

Gene: JF2_36 Start: 27319, Stop: 26933, Start Num: 74

Candidate Starts for JF2_36:

(Start: 74 @27319 has 48 MA's),

Gene: JF4_36 Start: 27319, Stop: 26933, Start Num: 74

Candidate Starts for JF4_36:

(Start: 74 @27319 has 48 MA's),

Gene: JHC117_41 Start: 28574, Stop: 28191, Start Num: 75

Candidate Starts for JHC117_41:

(Start: 60 @28601 has 15 MA's), (Start: 75 @28574 has 102 MA's), (Start: 89 @28529 has 6 MA's), (124, 28358), (126, 28346),

Gene: Janus_35 Start: 26738, Stop: 27211, Start Num: 76

Candidate Starts for Janus_35:

(Start: 76 @26738 has 20 MA's), (Start: 89 @26783 has 6 MA's), (91, 26792), (94, 26816), (Start: 95 @26825 has 1 MA's), (101, 26858), (132, 27008), (169, 27179), (172, 27194),

Gene: Jash_35 Start: 26042, Stop: 26530, Start Num: 59

Candidate Starts for Jash_35:

(21, 25937), (36, 25994), (Start: 59 @26042 has 35 MA's), (88, 26114), (Start: 95 @26159 has 1 MA's), (112, 26261), (143, 26378), (169, 26498), (173, 26525),

Gene: Jay2Jay_222 Start: 108801, Stop: 109115, Start Num: 87

Candidate Starts for Jay2Jay_222:

(Start: 87 @108801 has 7 MA's), (Start: 90 @108813 has 12 MA's), (Start: 92 @108825 has 8 MA's), (104, 108891), (116, 108945), (121, 108960), (152, 109095),

Gene: Jeffabunny_40 Start: 26412, Stop: 26023, Start Num: 75

Candidate Starts for Jeffabunny_40:

(Start: 75 @26412 has 102 MA's), (107, 26268), (113, 26223), (126, 26181), (130, 26154),

Gene: JenCasNa_41 Start: 28575, Stop: 28192, Start Num: 75

Candidate Starts for JenCasNa_41:

(Start: 60 @28602 has 15 MA's), (Start: 75 @28575 has 102 MA's), (Start: 89 @28530 has 6 MA's), (124, 28359), (126, 28347),

Gene: JeppNRM_41 Start: 28399, Stop: 28016, Start Num: 75

Candidate Starts for JeppNRM_41:

(9, 28630), (Start: 60 @28426 has 15 MA's), (Start: 75 @28399 has 102 MA's), (Start: 89 @28354 has 6 MA's), (124, 28183), (126, 28171),

Gene: Jevington_38 Start: 27148, Stop: 27609, Start Num: 67

Candidate Starts for Jevington_38:

(Start: 67 @27148 has 5 MA's), (Start: 89 @27196 has 6 MA's), (94, 27229), (142, 27451), (143, 27457), (147, 27490), (169, 27577), (172, 27592),

Gene: JewelBug_41 Start: 26622, Stop: 26230, Start Num: 73

Candidate Starts for JewelBug_41:

(Start: 73 @26622 has 21 MA's), (107, 26475), (113, 26430), (126, 26388), (130, 26361),

Gene: JimJam_238 Start: 110757, Stop: 111125, Start Num: 63

Candidate Starts for JimJam_238:

(Start: 63 @110757 has 23 MA's), (Start: 87 @110817 has 7 MA's), (Start: 92 @110841 has 8 MA's), (104, 110907), (110, 110928), (116, 110961), (121, 110976), (152, 111111),

Gene: Jobu08_40 Start: 28405, Stop: 28022, Start Num: 75

Candidate Starts for Jobu08_40:

(Start: 60 @28432 has 15 MA's), (Start: 75 @28405 has 102 MA's), (Start: 89 @28360 has 6 MA's), (124, 28189), (126, 28177),

Gene: Jollison_235 Start: 108967, Stop: 109335, Start Num: 63

Candidate Starts for Jollison_235:

(Start: 63 @108967 has 23 MA's), (Start: 87 @109027 has 7 MA's), (Start: 92 @109051 has 8 MA's), (104, 109117), (110, 109138), (116, 109171), (121, 109186), (152, 109321),

Gene: Jordennis_40 Start: 26606, Stop: 26214, Start Num: 73

Candidate Starts for Jordennis_40:

(Start: 73 @26606 has 21 MA's), (107, 26459), (113, 26414), (126, 26372), (130, 26345),

Gene: KADY_41 Start: 28574, Stop: 28191, Start Num: 75

Candidate Starts for KADY_41:

(Start: 60 @28601 has 15 MA's), (Start: 75 @28574 has 102 MA's), (Start: 84 @28547 has 2 MA's), (Start: 89 @28529 has 6 MA's), (124, 28358), (126, 28346),

Gene: Kalb97_41 Start: 28400, Stop: 28017, Start Num: 75

Candidate Starts for Kalb97_41:

(9, 28628), (Start: 60 @28427 has 15 MA's), (Start: 75 @28400 has 102 MA's), (Start: 89 @28355 has 6 MA's), (124, 28184), (126, 28172),

Gene: Kalnoky_41 Start: 28401, Stop: 28018, Start Num: 75

Candidate Starts for Kalnoky_41:

(9, 28626), (Start: 60 @28428 has 15 MA's), (Start: 75 @28401 has 102 MA's), (Start: 89 @28356 has 6 MA's), (124, 28185), (126, 28173),

Gene: Karimac_231 Start: 109152, Stop: 109520, Start Num: 63

Candidate Starts for Karimac_231:

(Start: 63 @109152 has 23 MA's), (Start: 87 @109212 has 7 MA's), (Start: 92 @109236 has 8 MA's), (104, 109302), (110, 109323), (116, 109356), (121, 109371), (152, 109506),

Gene: Katalie_34 Start: 26236, Stop: 26655, Start Num: 74

Candidate Starts for Katalie_34:

(Start: 74 @26236 has 48 MA's), (88, 26281), (Start: 89 @26284 has 6 MA's), (Start: 95 @26326 has 1 MA's), (104, 26377), (107, 26386), (112, 26428), (136, 26530),

Gene: Kazan_41 Start: 26622, Stop: 26230, Start Num: 73

Candidate Starts for Kazan_41:

(Start: 73 @26622 has 21 MA's), (107, 26475), (113, 26430), (126, 26388), (130, 26361),

Gene: KentuckyRacer_242 Start: 110672, Stop: 111040, Start Num: 63

Candidate Starts for KentuckyRacer_242:

(Start: 63 @110672 has 23 MA's), (Start: 87 @110732 has 7 MA's), (Start: 92 @110756 has 8 MA's), (104, 110822), (110, 110843), (116, 110876), (121, 110891), (152, 111026),

Gene: Kerberos_40 Start: 27983, Stop: 27597, Start Num: 74

Candidate Starts for Kerberos_40:

(Start: 74 @27983 has 48 MA's), (126, 27752),

Gene: Kimona_33 Start: 25900, Stop: 25490, Start Num: 75

Candidate Starts for Kimona_33:

(Start: 75 @25900 has 102 MA's), (107, 25753), (126, 25672), (147, 25567),

Gene: Kipper29_40 Start: 26610, Stop: 26224, Start Num: 75

Candidate Starts for Kipper29_40:

(Start: 75 @26610 has 102 MA's), (126, 26382), (130, 26355),

Gene: Koko_40 Start: 26968, Stop: 26579, Start Num: 73

Candidate Starts for Koko_40:

(Start: 73 @26968 has 21 MA's), (126, 26737), (130, 26710), (151, 26605),

Gene: Kratark_35 Start: 27746, Stop: 27267, Start Num: 75

Candidate Starts for Kratark_35:

(Start: 75 @27746 has 102 MA's), (147, 27413), (151, 27386),

Gene: Kremtemulon_34 Start: 27796, Stop: 27317, Start Num: 60
Candidate Starts for Kremtemulon_34:
(45, 27826), (Start: 60 @27796 has 15 MA's), (147, 27463), (151, 27436),

Gene: Kumquat_54 Start: 29457, Stop: 29041, Start Num: 79
Candidate Starts for Kumquat_54:
(25, 29580), (69, 29472), (Start: 79 @29457 has 13 MA's), (126, 29229),

Gene: LBerry_41 Start: 28576, Stop: 28193, Start Num: 75
Candidate Starts for LBerry_41:
(Start: 60 @28603 has 15 MA's), (Start: 75 @28576 has 102 MA's), (Start: 89 @28531 has 6 MA's),
(124, 28360), (126, 28348),

Gene: LHTSCC_37 Start: 28100, Stop: 27660, Start Num: 75
Candidate Starts for LHTSCC_37:
(Start: 75 @28100 has 102 MA's), (151, 27740), (152, 27737),

Gene: Lambert1_35 Start: 27809, Stop: 27381, Start Num: 77
Candidate Starts for Lambert1_35:
(Start: 75 @27812 has 102 MA's), (Start: 77 @27809 has 6 MA's), (Start: 89 @27764 has 6 MA's),
(112, 27626), (152, 27449),

Gene: Lannister_36 Start: 26707, Stop: 27195, Start Num: 59
Candidate Starts for Lannister_36:
(11, 26527), (36, 26659), (Start: 59 @26707 has 35 MA's), (88, 26779), (147, 27076), (169, 27163),
(173, 27190),

Gene: Larnav_223 Start: 108348, Stop: 108638, Start Num: 92
Candidate Starts for Larnav_223:
(Start: 87 @108324 has 7 MA's), (Start: 90 @108336 has 12 MA's), (Start: 92 @108348 has 8 MA's),
(104, 108414), (116, 108468), (121, 108483), (152, 108618),

Gene: LarryKay_40 Start: 28576, Stop: 28193, Start Num: 75
Candidate Starts for LarryKay_40:
(Start: 60 @28603 has 15 MA's), (Start: 75 @28576 has 102 MA's), (Start: 84 @28549 has 2 MA's),
(Start: 89 @28531 has 6 MA's), (124, 28360), (126, 28348),

Gene: Legacy_34 Start: 25659, Stop: 26147, Start Num: 59
Candidate Starts for Legacy_34:
(36, 25611), (Start: 59 @25659 has 35 MA's), (88, 25731), (Start: 95 @25776 has 1 MA's), (112,
25878), (143, 25995), (169, 26115), (173, 26142),

Gene: Leo04_217 Start: 108856, Stop: 109170, Start Num: 87
Candidate Starts for Leo04_217:
(Start: 87 @108856 has 7 MA's), (Start: 90 @108868 has 12 MA's), (Start: 92 @108880 has 8 MA's),
(104, 108946), (116, 109000), (121, 109015), (152, 109150),

Gene: Leviticus_34 Start: 25688, Stop: 26176, Start Num: 59
Candidate Starts for Leviticus_34:
(36, 25640), (Start: 59 @25688 has 35 MA's), (88, 25760), (Start: 95 @25805 has 1 MA's), (112,
25907), (143, 26024), (169, 26144), (173, 26171),

Gene: Lika_34 Start: 26509, Stop: 26988, Start Num: 74

Candidate Starts for Lika_34:

(Start: 74 @26509 has 48 MA's), (94, 26590), (Start: 97 @26605 has 1 MA's), (135, 26800), (169, 26956), (172, 26971),

Gene: LilMartin_216 Start: 106835, Stop: 107152, Start Num: 90

Candidate Starts for LilMartin_216:

(58, 106754), (Start: 87 @106823 has 7 MA's), (Start: 90 @106835 has 12 MA's), (Start: 92 @106847 has 8 MA's), (Start: 97 @106874 has 1 MA's), (104, 106913), (116, 106967), (121, 106982), (146, 107084), (159, 107135), (160, 107138),

Gene: Lilbooboo_46 Start: 33605, Stop: 34009, Start Num: 76

Candidate Starts for Lilbooboo_46:

(17, 33455), (Start: 64 @33593 has 3 MA's), (Start: 76 @33605 has 20 MA's), (Start: 97 @33698 has 1 MA's), (107, 33752), (152, 33974),

Gene: Lilit_41 Start: 28569, Stop: 28186, Start Num: 75

Candidate Starts for Lilit_41:

(Start: 60 @28596 has 15 MA's), (Start: 75 @28569 has 102 MA's), (Start: 89 @28524 has 6 MA's), (124, 28353), (126, 28341),

Gene: Lizz_71 Start: 50574, Stop: 50158, Start Num: 66

Candidate Starts for Lizz_71:

(Start: 66 @50574 has 3 MA's), (Start: 86 @50526 has 1 MA's), (Start: 89 @50514 has 6 MA's), (Start: 90 @50508 has 12 MA's), (93, 50493), (94, 50481), (130, 50295), (131, 50292), (144, 50250), (159, 50187), (163, 50175),

Gene: Loofah_35 Start: 26915, Stop: 27400, Start Num: 72

Candidate Starts for Loofah_35:

(Start: 72 @26915 has 11 MA's), (94, 26999), (Start: 97 @27014 has 1 MA's), (169, 27368), (172, 27383),

Gene: Lorelei_35 Start: 26571, Stop: 27047, Start Num: 76

Candidate Starts for Lorelei_35:

(11, 26373), (14, 26409), (36, 26505), (Start: 72 @26565 has 11 MA's), (Start: 76 @26571 has 20 MA's), (94, 26649), (Start: 97 @26664 has 1 MA's), (135, 26859), (169, 27015), (172, 27030),

Gene: Louie6_40 Start: 28575, Stop: 28192, Start Num: 75

Candidate Starts for Louie6_40:

(Start: 60 @28602 has 15 MA's), (Start: 75 @28575 has 102 MA's), (Start: 84 @28548 has 2 MA's), (Start: 89 @28530 has 6 MA's), (124, 28359), (126, 28347),

Gene: Lozinak_146 Start: 79968, Stop: 80357, Start Num: 75

Candidate Starts for Lozinak_146:

(Start: 75 @79968 has 102 MA's), (105, 80106), (152, 80328), (158, 80346),

Gene: LugYA_43 Start: 28576, Stop: 28193, Start Num: 75

Candidate Starts for LugYA_43:

(Start: 60 @28603 has 15 MA's), (Start: 75 @28576 has 102 MA's), (Start: 89 @28531 has 6 MA's), (124, 28360), (126, 28348),

Gene: LukeCage_234 Start: 111003, Stop: 111371, Start Num: 63

Candidate Starts for LukeCage_234:

(48, 110970), (56, 110988), (Start: 63 @111003 has 23 MA's), (Start: 87 @111063 has 7 MA's), (Start: 89 @111069 has 6 MA's), (Start: 92 @111087 has 8 MA's), (104, 111153), (116, 111207), (121, 111222), (152, 111357),

Gene: Lululemon_216 Start: 107223, Stop: 107525, Start Num: 90

Candidate Starts for Lululemon_216:

(Start: 87 @107211 has 7 MA's), (Start: 90 @107223 has 12 MA's), (Start: 92 @107235 has 8 MA's), (104, 107301), (116, 107355), (121, 107370), (152, 107505),

Gene: MA5_36 Start: 27451, Stop: 27065, Start Num: 74

Candidate Starts for MA5_36:

(Start: 74 @27451 has 48 MA's), (117, 27253),

Gene: MK4_36 Start: 27553, Stop: 27167, Start Num: 74

Candidate Starts for MK4_36:

(Start: 74 @27553 has 48 MA's),

Gene: MadMarie_41 Start: 28578, Stop: 28195, Start Num: 75

Candidate Starts for MadMarie_41:

(Start: 60 @28605 has 15 MA's), (Start: 75 @28578 has 102 MA's), (Start: 89 @28533 has 6 MA's), (124, 28362), (126, 28350),

Gene: Mainiac_41 Start: 28569, Stop: 28186, Start Num: 75

Candidate Starts for Mainiac_41:

(Start: 60 @28596 has 15 MA's), (Start: 75 @28569 has 102 MA's), (Start: 89 @28524 has 6 MA's), (124, 28353), (126, 28341),

Gene: Malinsilva_43 Start: 28568, Stop: 28185, Start Num: 75

Candidate Starts for Malinsilva_43:

(Start: 60 @28595 has 15 MA's), (Start: 75 @28568 has 102 MA's), (Start: 89 @28523 has 6 MA's), (124, 28352), (126, 28340),

Gene: Maneekul_34 Start: 26078, Stop: 26566, Start Num: 59

Candidate Starts for Maneekul_34:

(11, 25898), (36, 26030), (Start: 59 @26078 has 35 MA's), (88, 26150), (94, 26186), (Start: 95 @26195 has 1 MA's), (103, 26243), (142, 26408), (143, 26414), (169, 26534), (173, 26561),

Gene: Manu_41 Start: 28401, Stop: 28018, Start Num: 75

Candidate Starts for Manu_41:

(9, 28629), (Start: 60 @28428 has 15 MA's), (Start: 75 @28401 has 102 MA's), (Start: 89 @28356 has 6 MA's), (124, 28185), (126, 28173),

Gene: Manuel_51 Start: 29161, Stop: 28748, Start Num: 80

Candidate Starts for Manuel_51:

(Start: 80 @29161 has 1 MA's), (83, 29143), (Start: 97 @29077 has 1 MA's), (122, 28960), (137, 28885),

Gene: MarQuardt_41 Start: 28577, Stop: 28194, Start Num: 75

Candidate Starts for MarQuardt_41:

(Start: 60 @28604 has 15 MA's), (Start: 75 @28577 has 102 MA's), (Start: 89 @28532 has 6 MA's), (124, 28361), (126, 28349),

Gene: Marav_38 Start: 27473, Stop: 27934, Start Num: 67

Candidate Starts for Marav_38:

(Start: 67 @27473 has 5 MA's), (Start: 89 @27521 has 6 MA's), (94, 27554), (142, 27776), (143, 27782), (147, 27815), (169, 27902), (172, 27917),

Gene: Margo_35 Start: 27838, Stop: 27407, Start Num: 75

Candidate Starts for Margo_35:

(Start: 75 @27838 has 102 MA's), (Start: 77 @27835 has 6 MA's), (Start: 89 @27790 has 6 MA's), (112, 27652), (152, 27475),

Gene: Marie_41 Start: 28575, Stop: 28192, Start Num: 75

Candidate Starts for Marie_41:

(Start: 60 @28602 has 15 MA's), (Start: 75 @28575 has 102 MA's), (Start: 89 @28530 has 6 MA's), (124, 28359), (126, 28347),

Gene: Marius_41 Start: 28401, Stop: 28018, Start Num: 75

Candidate Starts for Marius_41:

(9, 28626), (Start: 60 @28428 has 15 MA's), (Start: 75 @28401 has 102 MA's), (Start: 89 @28356 has 6 MA's), (124, 28185), (126, 28173),

Gene: McFly_40 Start: 26616, Stop: 26224, Start Num: 73

Candidate Starts for McFly_40:

(Start: 73 @26616 has 21 MA's), (107, 26469), (113, 26424), (126, 26382), (130, 26355),

Gene: Methuselah_39 Start: 28570, Stop: 28187, Start Num: 75

Candidate Starts for Methuselah_39:

(Start: 60 @28597 has 15 MA's), (Start: 75 @28570 has 102 MA's), (Start: 84 @28543 has 2 MA's), (Start: 89 @28525 has 6 MA's), (124, 28354), (126, 28342),

Gene: Microwolf_41 Start: 28577, Stop: 28194, Start Num: 75

Candidate Starts for Microwolf_41:

(Start: 60 @28604 has 15 MA's), (Start: 75 @28577 has 102 MA's), (Start: 89 @28532 has 6 MA's), (124, 28361), (126, 28349),

Gene: Mildred21_226 Start: 106654, Stop: 106920, Start Num: 96

Candidate Starts for Mildred21_226:

(Start: 87 @106606 has 7 MA's), (Start: 92 @106630 has 8 MA's), (Start: 96 @106654 has 2 MA's), (104, 106696), (110, 106717), (116, 106750), (121, 106765), (123, 106771), (132, 106810), (152, 106900),

Gene: MindFlayer_224 Start: 108352, Stop: 108720, Start Num: 63

Candidate Starts for MindFlayer_224:

(Start: 63 @108352 has 23 MA's), (Start: 87 @108412 has 7 MA's), (Start: 92 @108436 has 8 MA's), (99, 108481), (104, 108502), (110, 108523), (116, 108556), (121, 108571), (152, 108706),

Gene: Miramae_35 Start: 28016, Stop: 27537, Start Num: 60

Candidate Starts for Miramae_35:

(Start: 60 @28016 has 15 MA's), (94, 27938), (Start: 95 @27929 has 1 MA's), (111, 27842), (151, 27656), (157, 27638), (167, 27605),

Gene: Misomonster_42 Start: 28573, Stop: 28190, Start Num: 75

Candidate Starts for Misomonster_42:

(Start: 60 @28600 has 15 MA's), (Start: 75 @28573 has 102 MA's), (Start: 84 @28546 has 2 MA's), (Start: 89 @28528 has 6 MA's), (124, 28357), (126, 28345),

Gene: MoneyMay_41 Start: 28602, Stop: 28192, Start Num: 60
Candidate Starts for MoneyMay_41:
(Start: 60 @28602 has 15 MA's), (Start: 75 @28575 has 102 MA's), (Start: 89 @28530 has 6 MA's),
(124, 28359), (126, 28347),

Gene: MuchMore_43 Start: 28568, Stop: 28185, Start Num: 75
Candidate Starts for MuchMore_43:
(Start: 60 @28595 has 15 MA's), (Start: 75 @28568 has 102 MA's), (Start: 89 @28523 has 6 MA's),
(124, 28352), (126, 28340),

Gene: Mugiwara_243 Start: 111539, Stop: 111907, Start Num: 63
Candidate Starts for Mugiwara_243:
(39, 111488), (48, 111506), (56, 111524), (Start: 63 @111539 has 23 MA's), (Start: 87 @111599 has 7
MA's), (Start: 89 @111605 has 6 MA's), (Start: 92 @111623 has 8 MA's), (Start: 95 @111644 has 1
MA's), (104, 111689), (116, 111743), (121, 111758),

Gene: MulchMansion_220 Start: 108481, Stop: 108786, Start Num: 92
Candidate Starts for MulchMansion_220:
(58, 108388), (Start: 87 @108457 has 7 MA's), (Start: 90 @108469 has 12 MA's), (Start: 92 @108481
has 8 MA's), (Start: 97 @108508 has 1 MA's), (104, 108547), (116, 108601), (121, 108616), (146,
108718), (159, 108769), (160, 108772),

Gene: Mundrea_35 Start: 27726, Stop: 27247, Start Num: 75
Candidate Starts for Mundrea_35:
(Start: 75 @27726 has 102 MA's), (151, 27366),

Gene: Nabi_35 Start: 26571, Stop: 27047, Start Num: 76
Candidate Starts for Nabi_35:
(11, 26373), (14, 26409), (36, 26505), (Start: 72 @26565 has 11 MA's), (Start: 76 @26571 has 20
MA's), (94, 26649), (Start: 97 @26664 has 1 MA's), (135, 26859), (169, 27015), (172, 27030),

Gene: Naji_40 Start: 27983, Stop: 27597, Start Num: 74
Candidate Starts for Naji_40:
(Start: 74 @27983 has 48 MA's), (126, 27752),

Gene: Nanodon_36 Start: 26328, Stop: 26813, Start Num: 72
Candidate Starts for Nanodon_36:
(Start: 72 @26328 has 11 MA's), (94, 26412), (Start: 97 @26427 has 1 MA's), (134, 26616), (138,
26637), (142, 26655), (169, 26781), (172, 26796),

Gene: Newrala_40 Start: 26609, Stop: 26217, Start Num: 73
Candidate Starts for Newrala_40:
(Start: 73 @26609 has 21 MA's), (107, 26462), (113, 26417), (126, 26375), (130, 26348),

Gene: Nishikigoi_36 Start: 26732, Stop: 27217, Start Num: 72
Candidate Starts for Nishikigoi_36:
(Start: 72 @26732 has 11 MA's), (Start: 89 @26783 has 6 MA's), (94, 26816), (Start: 97 @26831 has
1 MA's), (140, 27047), (169, 27185), (172, 27200),

Gene: Noella_35 Start: 27813, Stop: 27382, Start Num: 75
Candidate Starts for Noella_35:

(Start: 75 @27813 has 102 MA's), (Start: 77 @27810 has 6 MA's), (Start: 89 @27765 has 6 MA's),
(112, 27627), (152, 27450),

Gene: NootNoot_214 Start: 107088, Stop: 107390, Start Num: 90

Candidate Starts for NootNoot_214:

(Start: 87 @107076 has 7 MA's), (Start: 90 @107088 has 12 MA's), (Start: 92 @107100 has 8 MA's),
(104, 107166), (110, 107187), (121, 107235), (132, 107280), (152, 107370),

Gene: Norbert_34 Start: 27812, Stop: 27381, Start Num: 75

Candidate Starts for Norbert_34:

(Start: 75 @27812 has 102 MA's), (Start: 77 @27809 has 6 MA's), (Start: 89 @27764 has 6 MA's),
(112, 27626), (152, 27449),

Gene: Obama12_37 Start: 28102, Stop: 27662, Start Num: 75

Candidate Starts for Obama12_37:

(Start: 75 @28102 has 102 MA's), (151, 27742), (152, 27739),

Gene: OhMyWard_63 Start: 47880, Stop: 48323, Start Num: 57

Candidate Starts for OhMyWard_63:

(28, 47814), (52, 47871), (Start: 57 @47880 has 4 MA's), (Start: 97 @48009 has 1 MA's), (109,
48075), (112, 48102), (139, 48210), (147, 48264),

Gene: OlanP_40 Start: 28582, Stop: 28199, Start Num: 75

Candidate Starts for OlanP_40:

(Start: 60 @28609 has 15 MA's), (Start: 75 @28582 has 102 MA's), (Start: 89 @28537 has 6 MA's),
(124, 28366), (126, 28354),

Gene: Olicious_54 Start: 29438, Stop: 29022, Start Num: 79

Candidate Starts for Olicious_54:

(Start: 57 @29480 has 4 MA's), (Start: 79 @29438 has 13 MA's), (Start: 97 @29351 has 1 MA's),
(103, 29312), (112, 29261), (118, 29246), (119, 29240),

Gene: Oliynyk_35 Start: 26042, Stop: 26530, Start Num: 59

Candidate Starts for Oliynyk_35:

(21, 25937), (36, 25994), (Start: 59 @26042 has 35 MA's), (88, 26114), (Start: 95 @26159 has 1
MA's), (112, 26261), (143, 26378), (169, 26498), (173, 26525),

Gene: Ollie_41 Start: 28447, Stop: 28064, Start Num: 75

Candidate Starts for Ollie_41:

(Start: 60 @28474 has 15 MA's), (Start: 75 @28447 has 102 MA's), (Start: 89 @28402 has 6 MA's),
(124, 28231), (126, 28219),

Gene: Omar_37 Start: 26978, Stop: 27451, Start Num: 76

Candidate Starts for Omar_37:

(Start: 76 @26978 has 20 MA's), (91, 27032), (94, 27056), (Start: 95 @27065 has 1 MA's), (Start: 97
@27071 has 1 MA's), (169, 27419), (172, 27434),

Gene: OneUp_130 Start: 77814, Stop: 78209, Start Num: 71

Candidate Starts for OneUp_130:

(40, 77748), (Start: 71 @77814 has 7 MA's), (105, 77958), (158, 78198),

Gene: Ozzie_34 Start: 25668, Stop: 26156, Start Num: 59

Candidate Starts for Ozzie_34:

(36, 25620), (Start: 59 @25668 has 35 MA's), (88, 25740), (Start: 95 @25785 has 1 MA's), (112, 25887), (143, 26004), (169, 26124), (173, 26151),

Gene: OzzyJ_35 Start: 26047, Stop: 26535, Start Num: 59

Candidate Starts for OzzyJ_35:

(11, 25867), (14, 25903), (36, 25999), (Start: 59 @26047 has 35 MA's), (88, 26119), (94, 26155), (Start: 95 @26164 has 1 MA's), (103, 26212), (142, 26377), (143, 26383), (169, 26503), (173, 26530),

Gene: P28Green_41 Start: 28578, Stop: 28195, Start Num: 75

Candidate Starts for P28Green_41:

(Start: 60 @28605 has 15 MA's), (Start: 75 @28578 has 102 MA's), (Start: 89 @28533 has 6 MA's), (124, 28362), (126, 28350),

Gene: PGHhamlin_43 Start: 28568, Stop: 28185, Start Num: 75

Candidate Starts for PGHhamlin_43:

(Start: 60 @28595 has 15 MA's), (Start: 75 @28568 has 102 MA's), (Start: 89 @28523 has 6 MA's), (124, 28352), (126, 28340),

Gene: PHTowN_71 Start: 50512, Stop: 50156, Start Num: 89

Candidate Starts for PHTowN_71:

(Start: 66 @50572 has 3 MA's), (Start: 86 @50524 has 1 MA's), (Start: 89 @50512 has 6 MA's), (Start: 90 @50506 has 12 MA's), (93, 50491), (94, 50479), (130, 50293), (131, 50290), (144, 50248), (159, 50185), (163, 50173),

Gene: Pablito_34 Start: 26313, Stop: 26771, Start Num: 67

Candidate Starts for Pablito_34:

(Start: 67 @26313 has 5 MA's), (94, 26394), (103, 26451), (142, 26616), (143, 26622), (150, 26673), (169, 26739), (172, 26754),

Gene: PacManQ_217 Start: 107235, Stop: 107525, Start Num: 92

Candidate Starts for PacManQ_217:

(Start: 87 @107211 has 7 MA's), (Start: 90 @107223 has 12 MA's), (Start: 92 @107235 has 8 MA's), (104, 107301), (116, 107355), (121, 107370), (152, 107505),

Gene: Paedore_34 Start: 26900, Stop: 27385, Start Num: 72

Candidate Starts for Paedore_34:

(Start: 72 @26900 has 11 MA's), (94, 26984), (Start: 97 @26999 has 1 MA's), (169, 27353), (172, 27368),

Gene: Panamaxus_34 Start: 27812, Stop: 27381, Start Num: 75

Candidate Starts for Panamaxus_34:

(Start: 75 @27812 has 102 MA's), (Start: 77 @27809 has 6 MA's), (Start: 89 @27764 has 6 MA's), (112, 27626), (152, 27449),

Gene: Paolo_39 Start: 27402, Stop: 27788, Start Num: 95

Candidate Starts for Paolo_39:

(Start: 76 @27315 has 20 MA's), (Start: 89 @27360 has 6 MA's), (91, 27369), (94, 27393), (Start: 95 @27402 has 1 MA's), (Start: 97 @27408 has 1 MA's), (112, 27504), (143, 27636), (169, 27756), (172, 27771),

Gene: Paradiddles_209 Start: 109463, Stop: 109765, Start Num: 90

Candidate Starts for Paradiddles_209:

(Start: 87 @109451 has 7 MA's), (Start: 90 @109463 has 12 MA's), (Start: 92 @109475 has 8 MA's), (104, 109541), (110, 109562), (121, 109610), (132, 109655), (152, 109745),

Gene: Peebs_214 Start: 108319, Stop: 108609, Start Num: 92

Candidate Starts for Peebs_214:

(Start: 87 @108295 has 7 MA's), (Start: 90 @108307 has 12 MA's), (Start: 92 @108319 has 8 MA's), (104, 108385), (116, 108439), (121, 108454), (152, 108589),

Gene: Pembroke_41 Start: 28577, Stop: 28194, Start Num: 75

Candidate Starts for Pembroke_41:

(Start: 60 @28604 has 15 MA's), (Start: 75 @28577 has 102 MA's), (Start: 89 @28532 has 6 MA's), (124, 28361), (126, 28349),

Gene: Penny1_41 Start: 28576, Stop: 28193, Start Num: 75

Candidate Starts for Penny1_41:

(Start: 60 @28603 has 15 MA's), (Start: 75 @28576 has 102 MA's), (Start: 89 @28531 has 6 MA's), (124, 28360), (126, 28348),

Gene: Pepperwood_217 Start: 108551, Stop: 108841, Start Num: 92

Candidate Starts for Pepperwood_217:

(Start: 87 @108527 has 7 MA's), (Start: 90 @108539 has 12 MA's), (Start: 92 @108551 has 8 MA's), (104, 108617), (116, 108671), (121, 108686), (152, 108821),

Gene: Percastrophe_54 Start: 29372, Stop: 28956, Start Num: 79

Candidate Starts for Percastrophe_54:

(Start: 57 @29414 has 4 MA's), (Start: 79 @29372 has 13 MA's), (Start: 97 @29285 has 1 MA's), (114, 29189), (115, 29186), (118, 29180), (133, 29102),

Gene: Peregrin_191 Start: 101143, Stop: 101472, Start Num: 84

Candidate Starts for Peregrin_191:

(Start: 84 @101143 has 2 MA's), (Start: 90 @101167 has 12 MA's), (106, 101254), (120, 101311), (130, 101356), (142, 101395),

Gene: Persimmon_220 Start: 107589, Stop: 107891, Start Num: 90

Candidate Starts for Persimmon_220:

(Start: 87 @107577 has 7 MA's), (Start: 90 @107589 has 12 MA's), (Start: 92 @107601 has 8 MA's), (104, 107667), (110, 107688), (121, 107736), (128, 107763), (132, 107781), (152, 107871),

Gene: Phantastic_36 Start: 27584, Stop: 27198, Start Num: 74

Candidate Starts for Phantastic_36:

(Start: 74 @27584 has 48 MA's),

Gene: Phettuccine_34 Start: 25684, Stop: 26172, Start Num: 59

Candidate Starts for Phettuccine_34:

(36, 25636), (Start: 59 @25684 has 35 MA's), (88, 25756), (Start: 95 @25801 has 1 MA's), (112, 25903), (143, 26020), (169, 26140), (173, 26167),

Gene: PhinkBoden_144 Start: 79554, Stop: 79946, Start Num: 71

Candidate Starts for PhinkBoden_144:

(Start: 71 @79554 has 7 MA's), (105, 79695), (152, 79917), (158, 79935),

Gene: PhishRPhriends_39 Start: 27579, Stop: 27196, Start Num: 75

Candidate Starts for PhishRPhriends_39:

(9, 27807), (Start: 60 @27606 has 15 MA's), (Start: 75 @27579 has 102 MA's), (Start: 89 @27534 has 6 MA's), (124, 27363), (126, 27351),

Gene: Phoebe_41 Start: 28568, Stop: 28185, Start Num: 75

Candidate Starts for Phoebe_41:

(Start: 60 @28595 has 15 MA's), (Start: 75 @28568 has 102 MA's), (Start: 89 @28523 has 6 MA's), (124, 28352), (126, 28340),

Gene: Phoxy_40 Start: 28571, Stop: 28188, Start Num: 75

Candidate Starts for Phoxy_40:

(Start: 60 @28598 has 15 MA's), (Start: 75 @28571 has 102 MA's), (Start: 84 @28544 has 2 MA's), (Start: 89 @28526 has 6 MA's), (124, 28355), (126, 28343),

Gene: Phranny_41 Start: 28387, Stop: 28004, Start Num: 75

Candidate Starts for Phranny_41:

(9, 28615), (Start: 60 @28414 has 15 MA's), (Start: 75 @28387 has 102 MA's), (Start: 89 @28342 has 6 MA's), (124, 28171), (126, 28159),

Gene: PinkiePie_217 Start: 108231, Stop: 108545, Start Num: 87

Candidate Starts for PinkiePie_217:

(Start: 87 @108231 has 7 MA's), (Start: 90 @108243 has 12 MA's), (Start: 92 @108255 has 8 MA's), (104, 108321), (110, 108342), (121, 108390), (128, 108417), (132, 108435), (152, 108525),

Gene: Pistachio_37 Start: 27346, Stop: 26960, Start Num: 74

Candidate Starts for Pistachio_37:

(Start: 74 @27346 has 48 MA's), (117, 27148),

Gene: Pocahontas_35 Start: 27806, Stop: 27378, Start Num: 77

Candidate Starts for Pocahontas_35:

(Start: 75 @27809 has 102 MA's), (Start: 77 @27806 has 6 MA's), (Start: 89 @27761 has 6 MA's), (112, 27623), (152, 27446),

Gene: Pomar16_40 Start: 28024, Stop: 27638, Start Num: 74

Candidate Starts for Pomar16_40:

(Start: 74 @28024 has 48 MA's), (126, 27793),

Gene: Popsicle_35 Start: 27806, Stop: 27378, Start Num: 77

Candidate Starts for Popsicle_35:

(Start: 75 @27809 has 102 MA's), (Start: 77 @27806 has 6 MA's), (Start: 89 @27761 has 6 MA's), (112, 27623), (152, 27446),

Gene: PotatoSplit_42 Start: 28576, Stop: 28193, Start Num: 75

Candidate Starts for PotatoSplit_42:

(Start: 60 @28603 has 15 MA's), (Start: 75 @28576 has 102 MA's), (Start: 89 @28531 has 6 MA's), (124, 28360), (126, 28348),

Gene: Priamo_41 Start: 26652, Stop: 26263, Start Num: 75

Candidate Starts for Priamo_41:

(Start: 75 @26652 has 102 MA's), (107, 26508), (113, 26463), (126, 26421), (130, 26394),

Gene: Provolone_36 Start: 27103, Stop: 27507, Start Num: 74

Candidate Starts for Provolone_36:

(11, 26908), (38, 27043), (Start: 74 @27103 has 48 MA's), (91, 27157), (Start: 95 @27190 has 1 MA's), (101, 27223), (151, 27484), (153, 27490),

Gene: Puginator_39 Start: 27390, Stop: 27809, Start Num: 91

Candidate Starts for Puginator_39:

(Start: 76 @27336 has 20 MA's), (Start: 89 @27381 has 6 MA's), (91, 27390), (94, 27414), (Start: 95 @27423 has 1 MA's), (Start: 97 @27429 has 1 MA's), (112, 27525), (143, 27657), (169, 27777), (172, 27792),

Gene: PumpkinSpice_234 Start: 109573, Stop: 109941, Start Num: 63

Candidate Starts for PumpkinSpice_234:

(Start: 63 @109573 has 23 MA's), (Start: 87 @109633 has 7 MA's), (Start: 92 @109657 has 8 MA's), (104, 109723), (110, 109744), (116, 109777), (121, 109792), (152, 109927),

Gene: Puppy_37 Start: 27416, Stop: 27030, Start Num: 74

Candidate Starts for Puppy_37:

(Start: 74 @27416 has 48 MA's), (117, 27218),

Gene: PurpleHaze_40 Start: 28400, Stop: 28017, Start Num: 75

Candidate Starts for PurpleHaze_40:

(9, 28628), (Start: 60 @28427 has 15 MA's), (Start: 75 @28400 has 102 MA's), (Start: 89 @28355 has 6 MA's), (124, 28184), (126, 28172),

Gene: Quaran19_231 Start: 109014, Stop: 109382, Start Num: 63

Candidate Starts for Quaran19_231:

(Start: 63 @109014 has 23 MA's), (Start: 87 @109074 has 7 MA's), (Start: 92 @109098 has 8 MA's), (104, 109164), (110, 109185), (116, 109218), (121, 109233), (152, 109368),

Gene: QuinnKiro_34 Start: 27812, Stop: 27381, Start Num: 75

Candidate Starts for QuinnKiro_34:

(Start: 75 @27812 has 102 MA's), (Start: 77 @27809 has 6 MA's), (Start: 89 @27764 has 6 MA's), (112, 27626), (152, 27449),

Gene: R4_35 Start: 27055, Stop: 27540, Start Num: 72

Candidate Starts for R4_35:

(Start: 72 @27055 has 11 MA's), (94, 27139), (Start: 97 @27154 has 1 MA's), (107, 27211), (134, 27343), (142, 27382), (169, 27508), (172, 27523),

Gene: Rana_35 Start: 26571, Stop: 27047, Start Num: 76

Candidate Starts for Rana_35:

(11, 26373), (14, 26409), (36, 26505), (Start: 72 @26565 has 11 MA's), (Start: 76 @26571 has 20 MA's), (94, 26649), (Start: 97 @26664 has 1 MA's), (135, 26859), (169, 27015), (172, 27030),

Gene: Reba_41 Start: 28060, Stop: 27677, Start Num: 75

Candidate Starts for Reba_41:

(9, 28288), (Start: 60 @28087 has 15 MA's), (Start: 75 @28060 has 102 MA's), (Start: 89 @28015 has 6 MA's), (124, 27844), (126, 27832),

Gene: RedBear_35 Start: 26236, Stop: 26655, Start Num: 74

Candidate Starts for RedBear_35:

(Start: 74 @26236 has 48 MA's), (88, 26281), (Start: 89 @26284 has 6 MA's), (Start: 95 @26326 has 1 MA's), (104, 26377), (107, 26386), (112, 26428), (136, 26530),

Gene: RemusLoopin_46 Start: 34126, Stop: 34542, Start Num: 64
Candidate Starts for RemusLoopin_46:
(Start: 64 @34126 has 3 MA's), (94, 34216), (Start: 97 @34231 has 1 MA's), (98, 34249),

Gene: ResDef_36 Start: 27809, Stop: 27381, Start Num: 77
Candidate Starts for ResDef_36:
(Start: 75 @27812 has 102 MA's), (Start: 77 @27809 has 6 MA's), (Start: 89 @27764 has 6 MA's),
(112, 27626), (152, 27449),

Gene: RhynO_36 Start: 27673, Stop: 27197, Start Num: 60
Candidate Starts for RhynO_36:
(45, 27709), (Start: 60 @27673 has 15 MA's), (Start: 89 @27628 has 6 MA's), (94, 27595), (Start: 95
@27586 has 1 MA's), (Start: 96 @27583 has 2 MA's), (149, 27331), (151, 27316), (157, 27298),

Gene: Rifter_40 Start: 26392, Stop: 26003, Start Num: 73
Candidate Starts for Rifter_40:
(Start: 73 @26392 has 21 MA's), (126, 26161), (130, 26134), (151, 26029),

Gene: Rockstar_36 Start: 27560, Stop: 27174, Start Num: 74
Candidate Starts for Rockstar_36:
(Start: 74 @27560 has 48 MA's),

Gene: Roksolana_41 Start: 26646, Stop: 26254, Start Num: 73
Candidate Starts for Roksolana_41:
(Start: 73 @26646 has 21 MA's), (107, 26499), (113, 26454), (126, 26412), (130, 26385),

Gene: Romero_54 Start: 29431, Stop: 29015, Start Num: 79
Candidate Starts for Romero_54:
(Start: 57 @29473 has 4 MA's), (Start: 79 @29431 has 13 MA's), (Start: 97 @29344 has 1 MA's),
(103, 29305), (112, 29254), (118, 29239), (119, 29233),

Gene: Rooney_71 Start: 50674, Stop: 50294, Start Num: 82
Candidate Starts for Rooney_71:
(Start: 66 @50710 has 3 MA's), (Start: 82 @50674 has 2 MA's), (Start: 86 @50662 has 1 MA's), (Start:
89 @50650 has 6 MA's), (Start: 90 @50644 has 12 MA's), (93, 50629), (Start: 95 @50608 has 1
MA's), (127, 50452), (131, 50428), (143, 50389), (144, 50386), (154, 50332), (159, 50323),

Gene: RosePharie_55 Start: 29769, Stop: 29353, Start Num: 78
Candidate Starts for RosePharie_55:
(69, 29781), (Start: 78 @29769 has 1 MA's), (83, 29748), (Start: 97 @29682 has 1 MA's), (137,
29490),

Gene: Rowa_49 Start: 35076, Stop: 35489, Start Num: 64
Candidate Starts for Rowa_49:
(Start: 64 @35076 has 3 MA's), (Start: 95 @35175 has 1 MA's), (98, 35199), (139, 35373), (151,
35454),

Gene: Rummer_40 Start: 28571, Stop: 28188, Start Num: 75
Candidate Starts for Rummer_40:
(Start: 60 @28598 has 15 MA's), (Start: 75 @28571 has 102 MA's), (Start: 84 @28544 has 2 MA's),
(Start: 89 @28526 has 6 MA's), (124, 28355), (126, 28343),

Gene: Rusticus_35 Start: 26042, Stop: 26530, Start Num: 59

Candidate Starts for Rusticus_35:

(21, 25937), (36, 25994), (Start: 59 @26042 has 35 MA's), (88, 26114), (Start: 95 @26159 has 1 MA's), (112, 26261), (143, 26378), (169, 26498), (173, 26525),

Gene: Sabia_41 Start: 28596, Stop: 28186, Start Num: 60

Candidate Starts for Sabia_41:

(Start: 60 @28596 has 15 MA's), (Start: 75 @28569 has 102 MA's), (Start: 89 @28524 has 6 MA's), (124, 28353), (126, 28341),

Gene: Sabinator_40 Start: 28574, Stop: 28191, Start Num: 75

Candidate Starts for Sabinator_40:

(Start: 60 @28601 has 15 MA's), (Start: 75 @28574 has 102 MA's), (Start: 89 @28529 has 6 MA's), (124, 28358), (126, 28346),

Gene: Saftant_35 Start: 27670, Stop: 28074, Start Num: 74

Candidate Starts for Saftant_35:

(Start: 74 @27670 has 48 MA's), (91, 27724), (Start: 95 @27757 has 1 MA's), (101, 27790), (143, 27991), (151, 28051), (153, 28057),

Gene: SaltySpittoon_231 Start: 108556, Stop: 108924, Start Num: 63

Candidate Starts for SaltySpittoon_231:

(Start: 63 @108556 has 23 MA's), (Start: 87 @108616 has 7 MA's), (Start: 92 @108640 has 8 MA's), (104, 108706), (110, 108727), (116, 108760), (121, 108775), (152, 108910),

Gene: Samisti12_221 Start: 110133, Stop: 110435, Start Num: 90

Candidate Starts for Samisti12_221:

(Start: 87 @110121 has 7 MA's), (Start: 90 @110133 has 12 MA's), (Start: 92 @110145 has 8 MA's), (104, 110211), (116, 110265), (121, 110280), (152, 110415),

Gene: SarahRose_34 Start: 26055, Stop: 26543, Start Num: 59

Candidate Starts for SarahRose_34:

(Start: 59 @26055 has 35 MA's), (88, 26127), (94, 26163), (Start: 95 @26172 has 1 MA's), (103, 26220), (142, 26385), (143, 26391), (169, 26511), (173, 26538),

Gene: SaturnRing_36 Start: 27799, Stop: 27413, Start Num: 74

Candidate Starts for SaturnRing_36:

(Start: 74 @27799 has 48 MA's), (117, 27601),

Gene: Schwartz33_66 Start: 46646, Stop: 47134, Start Num: 55

Candidate Starts for Schwartz33_66:

(51, 46640), (Start: 55 @46646 has 2 MA's), (Start: 86 @46724 has 1 MA's), (Start: 97 @46784 has 1 MA's), (125, 46922), (130, 46961),

Gene: Scout_36 Start: 27106, Stop: 26720, Start Num: 74

Candidate Starts for Scout_36:

(Start: 74 @27106 has 48 MA's), (117, 26908),

Gene: Sebastisaurus_45 Start: 34670, Stop: 34981, Start Num: 97

Candidate Starts for Sebastisaurus_45:

(Start: 64 @34565 has 3 MA's), (94, 34655), (Start: 97 @34670 has 1 MA's),

Gene: Secretariat_64 Start: 45608, Stop: 46093, Start Num: 55

Candidate Starts for Secretariat_64:

(12, 45440), (15, 45479), (20, 45497), (38, 45575), (44, 45584), (Start: 55 @45608 has 2 MA's), (Start: 86 @45683 has 1 MA's), (Start: 97 @45743 has 1 MA's), (108, 45800), (125, 45881), (129, 45917), (130, 45920),

Gene: ShakeNBake_71 Start: 50539, Stop: 50183, Start Num: 89

Candidate Starts for ShakeNBake_71:

(Start: 66 @50599 has 3 MA's), (Start: 86 @50551 has 1 MA's), (Start: 89 @50539 has 6 MA's), (Start: 90 @50533 has 12 MA's), (93, 50518), (94, 50506), (130, 50320), (131, 50317), (144, 50275), (159, 50212), (163, 50200),

Gene: Shawty_45 Start: 33157, Stop: 33510, Start Num: 89

Candidate Starts for Shawty_45:

(47, 33064), (53, 33076), (62, 33097), (Start: 89 @33157 has 6 MA's), (Start: 97 @33205 has 1 MA's), (152, 33481), (161, 33502),

Gene: SheldonCooper_37 Start: 28101, Stop: 27661, Start Num: 75

Candidate Starts for SheldonCooper_37:

(Start: 75 @28101 has 102 MA's), (151, 27741), (152, 27738),

Gene: SmellyB_40 Start: 26616, Stop: 26224, Start Num: 73

Candidate Starts for SmellyB_40:

(Start: 73 @26616 has 21 MA's), (107, 26469), (113, 26424), (126, 26382), (130, 26355),

Gene: Smoothie_147 Start: 79538, Stop: 79933, Start Num: 71

Candidate Starts for Smoothie_147:

(1, 78968), (2, 79082), (3, 79109), (4, 79139), (5, 79232), (10, 79331), (16, 79382), (19, 79394), (29, 79445), (32, 79466), (43, 79481), (Start: 71 @79538 has 7 MA's), (105, 79682), (152, 79904), (158, 79922),

Gene: Snorlax_34 Start: 26059, Stop: 26547, Start Num: 59

Candidate Starts for Snorlax_34:

(11, 25879), (14, 25915), (36, 26011), (Start: 59 @26059 has 35 MA's), (88, 26131), (94, 26167), (Start: 95 @26176 has 1 MA's), (103, 26224), (142, 26389), (143, 26395), (169, 26515), (173, 26542),

Gene: SoYo_41 Start: 28514, Stop: 28104, Start Num: 60

Candidate Starts for SoYo_41:

(Start: 60 @28514 has 15 MA's), (Start: 75 @28487 has 102 MA's), (Start: 89 @28442 has 6 MA's), (124, 28271), (126, 28259),

Gene: SoilDragon_40 Start: 28021, Stop: 27638, Start Num: 75

Candidate Starts for SoilDragon_40:

(Start: 60 @28048 has 15 MA's), (Start: 75 @28021 has 102 MA's), (Start: 89 @27976 has 6 MA's), (124, 27805), (126, 27793),

Gene: Sollertia_229 Start: 109154, Stop: 109522, Start Num: 63

Candidate Starts for Sollertia_229:

(48, 109121), (56, 109139), (Start: 63 @109154 has 23 MA's), (Start: 87 @109214 has 7 MA's), (Start: 92 @109238 has 8 MA's), (Start: 95 @109259 has 1 MA's), (104, 109304), (116, 109358), (121, 109373),

Gene: Soshari_42 Start: 28570, Stop: 28187, Start Num: 75

Candidate Starts for Soshari_42:

(Start: 60 @28597 has 15 MA's), (Start: 75 @28570 has 102 MA's), (Start: 84 @28543 has 2 MA's), (Start: 89 @28525 has 6 MA's), (124, 28354), (126, 28342),

Gene: South40_34 Start: 26236, Stop: 26655, Start Num: 74

Candidate Starts for South40_34:

(Start: 74 @26236 has 48 MA's), (88, 26281), (Start: 89 @26284 has 6 MA's), (Start: 95 @26326 has 1 MA's), (104, 26377), (107, 26386), (112, 26428), (136, 26530),

Gene: Spelly_236 Start: 108485, Stop: 108853, Start Num: 63

Candidate Starts for Spelly_236:

(Start: 63 @108485 has 23 MA's), (Start: 87 @108545 has 7 MA's), (Start: 92 @108569 has 8 MA's), (104, 108635), (110, 108656), (116, 108689), (121, 108704), (152, 108839),

Gene: Spike509_40 Start: 28571, Stop: 28188, Start Num: 75

Candidate Starts for Spike509_40:

(Start: 60 @28598 has 15 MA's), (Start: 75 @28571 has 102 MA's), (Start: 84 @28544 has 2 MA's), (Start: 89 @28526 has 6 MA's), (124, 28355), (126, 28343),

Gene: Spilled_238 Start: 109689, Stop: 110057, Start Num: 63

Candidate Starts for Spilled_238:

(Start: 63 @109689 has 23 MA's), (Start: 87 @109749 has 7 MA's), (Start: 92 @109773 has 8 MA's), (104, 109839), (110, 109860), (116, 109893), (121, 109908), (152, 110043),

Gene: SqueakyClean_34 Start: 26829, Stop: 27302, Start Num: 76

Candidate Starts for SqueakyClean_34:

(Start: 76 @26829 has 20 MA's), (Start: 89 @26874 has 6 MA's), (91, 26883), (94, 26907), (Start: 95 @26916 has 1 MA's), (101, 26949), (132, 27099), (169, 27270), (172, 27285),

Gene: Squillium_220 Start: 108257, Stop: 108547, Start Num: 92

Candidate Starts for Squillium_220:

(Start: 87 @108233 has 7 MA's), (Start: 90 @108245 has 12 MA's), (Start: 92 @108257 has 8 MA's), (104, 108323), (110, 108344), (121, 108392), (128, 108419), (132, 108437), (152, 108527),

Gene: Stagni_41 Start: 28578, Stop: 28195, Start Num: 75

Candidate Starts for Stagni_41:

(Start: 60 @28605 has 15 MA's), (Start: 75 @28578 has 102 MA's), (Start: 89 @28533 has 6 MA's), (124, 28362), (126, 28350),

Gene: Stanimal_228 Start: 109526, Stop: 109894, Start Num: 63

Candidate Starts for Stanimal_228:

(48, 109493), (56, 109511), (Start: 63 @109526 has 23 MA's), (Start: 87 @109586 has 7 MA's), (Start: 92 @109610 has 8 MA's), (Start: 95 @109631 has 1 MA's), (104, 109676), (116, 109730), (121, 109745),

Gene: StarPlatinum_238 Start: 111486, Stop: 111854, Start Num: 63

Candidate Starts for StarPlatinum_238:

(48, 111453), (56, 111471), (Start: 63 @111486 has 23 MA's), (Start: 87 @111546 has 7 MA's), (Start: 89 @111552 has 6 MA's), (Start: 92 @111570 has 8 MA's), (104, 111636), (116, 111690), (121, 111705), (152, 111840),

Gene: StarStuff_40 Start: 27986, Stop: 27600, Start Num: 74

Candidate Starts for StarStuff_40:

(Start: 74 @27986 has 48 MA's), (126, 27755),

Gene: Starbow_228 Start: 108529, Stop: 108897, Start Num: 63

Candidate Starts for Starbow_228:

(Start: 63 @108529 has 23 MA's), (Start: 87 @108589 has 7 MA's), (Start: 92 @108613 has 8 MA's), (104, 108679), (110, 108700), (116, 108733), (121, 108748), (152, 108883),

Gene: Stasia_36 Start: 28128, Stop: 27649, Start Num: 60

Candidate Starts for Stasia_36:

(45, 28158), (Start: 60 @28128 has 15 MA's), (151, 27768), (157, 27750),

Gene: StepMih_41 Start: 28569, Stop: 28186, Start Num: 75

Candidate Starts for StepMih_41:

(Start: 60 @28596 has 15 MA's), (Start: 75 @28569 has 102 MA's), (Start: 89 @28524 has 6 MA's), (124, 28353), (126, 28341),

Gene: Success_13 Start: 8706, Stop: 8326, Start Num: 89

Candidate Starts for Success_13:

(42, 8814), (47, 8802), (Start: 89 @8706 has 6 MA's), (100, 8634), (102, 8625), (129, 8496), (145, 8421), (151, 8388), (152, 8385), (168, 8337),

Gene: Sujidade_35 Start: 26794, Stop: 27273, Start Num: 74

Candidate Starts for Sujidade_35:

(Start: 74 @26794 has 48 MA's), (94, 26875), (Start: 97 @26890 has 1 MA's), (135, 27085), (169, 27241), (172, 27256),

Gene: SunsetPointe_34 Start: 25675, Stop: 26163, Start Num: 59

Candidate Starts for SunsetPointe_34:

(36, 25627), (Start: 59 @25675 has 35 MA's), (88, 25747), (Start: 95 @25792 has 1 MA's), (112, 25894), (143, 26011), (169, 26131), (173, 26158),

Gene: SuperAwesome_40 Start: 26609, Stop: 26217, Start Num: 73

Candidate Starts for SuperAwesome_40:

(Start: 73 @26609 has 21 MA's), (107, 26462), (113, 26417), (126, 26375), (130, 26348),

Gene: Superstar_38 Start: 27847, Stop: 28332, Start Num: 72

Candidate Starts for Superstar_38:

(Start: 72 @27847 has 11 MA's), (94, 27931), (Start: 97 @27946 has 1 MA's), (134, 28135), (169, 28300), (172, 28315),

Gene: Sushi23_217 Start: 109173, Stop: 109475, Start Num: 90

Candidate Starts for Sushi23_217:

(Start: 87 @109161 has 7 MA's), (Start: 90 @109173 has 12 MA's), (Start: 92 @109185 has 8 MA's), (104, 109251), (116, 109305), (121, 109320), (152, 109455),

Gene: TNguyen7_36 Start: 27763, Stop: 27377, Start Num: 74

Candidate Starts for TNguyen7_36:

(Start: 74 @27763 has 48 MA's), (117, 27565),

Gene: TAgePighther_36 Start: 26059, Stop: 26547, Start Num: 59

Candidate Starts for TAgePighther_36:

(11, 25879), (14, 25915), (36, 26011), (Start: 59 @26059 has 35 MA's), (88, 26131), (94, 26167), (Start: 95 @26176 has 1 MA's), (103, 26224), (142, 26389), (143, 26395), (169, 26515), (173, 26542),

Gene: Targaryen_216 Start: 109330, Stop: 109644, Start Num: 87
Candidate Starts for Targaryen_216:
(Start: 87 @109330 has 7 MA's), (Start: 90 @109342 has 12 MA's), (Start: 92 @109354 has 8 MA's),
(104, 109420), (116, 109474), (121, 109489), (152, 109624),

Gene: Taurus_41 Start: 28575, Stop: 28192, Start Num: 75
Candidate Starts for Taurus_41:
(Start: 60 @28602 has 15 MA's), (Start: 75 @28575 has 102 MA's), (Start: 89 @28530 has 6 MA's),
(124, 28359), (126, 28347),

Gene: Tefunt_36 Start: 26734, Stop: 27219, Start Num: 72
Candidate Starts for Tefunt_36:
(Start: 72 @26734 has 11 MA's), (Start: 89 @26785 has 6 MA's), (94, 26818), (Start: 97 @26833 has
1 MA's), (140, 27049), (169, 27187), (172, 27202),

Gene: TenaciousP_69 Start: 47769, Stop: 48215, Start Num: 57
Candidate Starts for TenaciousP_69:
(26, 47697), (37, 47730), (52, 47760), (Start: 57 @47769 has 4 MA's), (Start: 97 @47901 has 1 MA's),
(112, 47994), (139, 48102), (146, 48153),

Gene: Teutsch_216 Start: 108974, Stop: 109264, Start Num: 92
Candidate Starts for Teutsch_216:
(Start: 87 @108950 has 7 MA's), (Start: 90 @108962 has 12 MA's), (Start: 92 @108974 has 8 MA's),
(104, 109040), (116, 109094), (121, 109109), (152, 109244),

Gene: Texage_34 Start: 27813, Stop: 27382, Start Num: 75
Candidate Starts for Texage_34:
(Start: 75 @27813 has 102 MA's), (Start: 77 @27810 has 6 MA's), (Start: 89 @27765 has 6 MA's),
(112, 27627), (152, 27450),

Gene: Thestral_36 Start: 26939, Stop: 27412, Start Num: 76
Candidate Starts for Thestral_36:
(Start: 76 @26939 has 20 MA's), (Start: 89 @26984 has 6 MA's), (91, 26993), (94, 27017), (101,
27059), (112, 27128), (169, 27380), (172, 27395),

Gene: Tiffany_41 Start: 28461, Stop: 28078, Start Num: 75
Candidate Starts for Tiffany_41:
(Start: 60 @28488 has 15 MA's), (Start: 75 @28461 has 102 MA's), (Start: 89 @28416 has 6 MA's),
(124, 28245), (126, 28233),

Gene: TinaBelcher_35 Start: 26886, Stop: 27359, Start Num: 76
Candidate Starts for TinaBelcher_35:
(Start: 76 @26886 has 20 MA's), (Start: 89 @26931 has 6 MA's), (91, 26940), (94, 26964), (101,
27006), (112, 27075), (169, 27327), (172, 27342),

Gene: Todacoro_35 Start: 27812, Stop: 27381, Start Num: 75
Candidate Starts for Todacoro_35:
(Start: 75 @27812 has 102 MA's), (Start: 77 @27809 has 6 MA's), (Start: 89 @27764 has 6 MA's),
(112, 27626), (152, 27449),

Gene: TomSawyer_235 Start: 111000, Stop: 111368, Start Num: 63
Candidate Starts for TomSawyer_235:

(Start: 63 @111000 has 23 MA's), (Start: 87 @111060 has 7 MA's), (Start: 92 @111084 has 8 MA's), (104, 111150), (110, 111171), (116, 111204), (121, 111219), (152, 111354),

Gene: Toma_34 Start: 26511, Stop: 26990, Start Num: 74

Candidate Starts for Toma_34:

(Start: 74 @26511 has 48 MA's), (94, 26592), (Start: 97 @26607 has 1 MA's), (135, 26802), (169, 26958), (172, 26973),

Gene: Tomas_229 Start: 109990, Stop: 110343, Start Num: 71

Candidate Starts for Tomas_229:

(Start: 71 @109990 has 7 MA's), (Start: 87 @110035 has 7 MA's), (Start: 92 @110059 has 8 MA's), (Start: 95 @110080 has 1 MA's), (104, 110125), (116, 110179), (121, 110194),

Gene: Tomathan_40 Start: 27983, Stop: 27597, Start Num: 74

Candidate Starts for Tomathan_40:

(Start: 74 @27983 has 48 MA's), (126, 27752),

Gene: ToneTone_37 Start: 26318, Stop: 25929, Start Num: 75

Candidate Starts for ToneTone_37:

(Start: 75 @26318 has 102 MA's), (107, 26174), (113, 26129), (126, 26087), (130, 26060),

Gene: Toniann_146 Start: 79300, Stop: 79689, Start Num: 75

Candidate Starts for Toniann_146:

(Start: 75 @79300 has 102 MA's), (105, 79438), (152, 79660), (158, 79678),

Gene: ToriToki_54 Start: 29434, Stop: 29018, Start Num: 79

Candidate Starts for ToriToki_54:

(Start: 57 @29476 has 4 MA's), (Start: 79 @29434 has 13 MA's), (Start: 97 @29347 has 1 MA's), (114, 29251), (115, 29248), (118, 29242), (133, 29164),

Gene: Treat_54 Start: 29375, Stop: 28959, Start Num: 79

Candidate Starts for Treat_54:

(Start: 57 @29417 has 4 MA's), (Start: 79 @29375 has 13 MA's), (Start: 97 @29288 has 1 MA's), (103, 29249), (112, 29198), (118, 29183), (119, 29177),

Gene: Tribute_213 Start: 109127, Stop: 109429, Start Num: 90

Candidate Starts for Tribute_213:

(Start: 87 @109115 has 7 MA's), (Start: 90 @109127 has 12 MA's), (Start: 92 @109139 has 8 MA's), (104, 109205), (116, 109259), (121, 109274), (152, 109409),

Gene: Triste_34 Start: 26047, Stop: 26535, Start Num: 59

Candidate Starts for Triste_34:

(11, 25867), (14, 25903), (36, 25999), (Start: 59 @26047 has 35 MA's), (88, 26119), (94, 26155), (Start: 95 @26164 has 1 MA's), (103, 26212), (142, 26377), (143, 26383), (169, 26503), (173, 26530),

Gene: Triumph_36 Start: 26636, Stop: 27115, Start Num: 68

Candidate Starts for Triumph_36:

(49, 26600), (Start: 68 @26636 has 1 MA's), (88, 26687), (94, 26723), (Start: 95 @26732 has 1 MA's), (Start: 97 @26738 has 1 MA's), (98, 26756), (169, 27083), (172, 27098),

Gene: TrvxScott_34 Start: 26932, Stop: 27405, Start Num: 76

Candidate Starts for TrvxScott_34:

(Start: 76 @26932 has 20 MA's), (Start: 89 @26977 has 6 MA's), (91, 26986), (94, 27010), (101, 27052), (112, 27121), (169, 27373), (172, 27388),

Gene: TuanPN_33 Start: 25988, Stop: 26476, Start Num: 59

Candidate Starts for TuanPN_33:

(13, 25820), (34, 25937), (Start: 59 @25988 has 35 MA's), (88, 26060), (94, 26096), (Start: 95 @26105 has 1 MA's), (103, 26153), (142, 26318), (143, 26324), (169, 26444), (173, 26471),

Gene: Tucker_40 Start: 26404, Stop: 26015, Start Num: 75

Candidate Starts for Tucker_40:

(Start: 75 @26404 has 102 MA's), (Start: 84 @26377 has 2 MA's), (107, 26260), (113, 26215), (126, 26173), (130, 26146),

Gene: Unstoppable_34 Start: 25679, Stop: 26167, Start Num: 59

Candidate Starts for Unstoppable_34:

(36, 25631), (Start: 59 @25679 has 35 MA's), (88, 25751), (Start: 95 @25796 has 1 MA's), (112, 25898), (143, 26015), (169, 26135), (173, 26162),

Gene: VA6_37 Start: 28094, Stop: 27678, Start Num: 74

Candidate Starts for VA6_37:

(7, 28382), (Start: 74 @28094 has 48 MA's), (126, 27863), (151, 27731), (159, 27710), (164, 27692),

Gene: VC3_40 Start: 28082, Stop: 27666, Start Num: 74

Candidate Starts for VC3_40:

(7, 28370), (Start: 74 @28082 has 48 MA's), (126, 27851), (151, 27719), (159, 27698), (164, 27680),

Gene: Vanseggelen_40 Start: 27232, Stop: 27636, Start Num: 74

Candidate Starts for Vanseggelen_40:

(11, 27037), (38, 27172), (Start: 74 @27232 has 48 MA's), (Start: 89 @27277 has 6 MA's), (91, 27286), (94, 27310), (Start: 95 @27319 has 1 MA's), (101, 27352), (151, 27613), (153, 27619),

Gene: Vardy_63 Start: 46057, Stop: 46503, Start Num: 57

Candidate Starts for Vardy_63:

(28, 45991), (41, 46027), (52, 46048), (Start: 57 @46057 has 4 MA's), (Start: 97 @46189 has 1 MA's), (109, 46255), (112, 46282), (118, 46297), (139, 46390), (146, 46441),

Gene: Vash_45 Start: 33403, Stop: 33828, Start Num: 64

Candidate Starts for Vash_45:

(Start: 64 @33403 has 3 MA's), (Start: 76 @33415 has 20 MA's), (94, 33493), (Start: 97 @33508 has 1 MA's), (98, 33526), (142, 33715), (152, 33784), (155, 33796), (161, 33808), (164, 33820),

Gene: Verabelle_38 Start: 27616, Stop: 28023, Start Num: 74

Candidate Starts for Verabelle_38:

(11, 27421), (21, 27496), (38, 27556), (Start: 74 @27616 has 48 MA's), (91, 27673), (Start: 95 @27706 has 1 MA's), (104, 27757), (112, 27808), (118, 27823), (143, 27940), (151, 28000), (153, 28006),

Gene: Veracruz_34 Start: 27812, Stop: 27381, Start Num: 75

Candidate Starts for Veracruz_34:

(Start: 75 @27812 has 102 MA's), (Start: 77 @27809 has 6 MA's), (Start: 89 @27764 has 6 MA's), (112, 27626), (152, 27449),

Gene: Verse_35 Start: 28380, Stop: 28784, Start Num: 74

Candidate Starts for Verse_35:

(38, 28317), (Start: 74 @28380 has 48 MA's), (Start: 89 @28425 has 6 MA's), (91, 28434), (94, 28458), (104, 28518), (143, 28701), (151, 28761), (153, 28767),

Gene: Vix_41 Start: 28658, Stop: 28275, Start Num: 75

Candidate Starts for Vix_41:

(Start: 60 @28685 has 15 MA's), (Start: 75 @28658 has 102 MA's), (Start: 89 @28613 has 6 MA's), (124, 28442), (126, 28430),

Gene: VohminGhazi_40 Start: 26617, Stop: 26225, Start Num: 73

Candidate Starts for VohminGhazi_40:

(Start: 73 @26617 has 21 MA's), (107, 26470), (113, 26425), (126, 26383), (130, 26356),

Gene: Vorvolakos_54 Start: 29094, Stop: 28675, Start Num: 79

Candidate Starts for Vorvolakos_54:

(Start: 79 @29094 has 13 MA's), (Start: 85 @29067 has 1 MA's), (94, 29022), (137, 28812),

Gene: WRightOn_58 Start: 29613, Stop: 29197, Start Num: 79

Candidate Starts for WRightOn_58:

(25, 29736), (69, 29628), (Start: 79 @29613 has 13 MA's), (126, 29385),

Gene: Warpy_220 Start: 108239, Stop: 108553, Start Num: 87

Candidate Starts for Warpy_220:

(Start: 87 @108239 has 7 MA's), (Start: 90 @108251 has 12 MA's), (Start: 92 @108263 has 8 MA's), (104, 108329), (116, 108383), (121, 108398), (152, 108533),

Gene: Watermoore_216 Start: 109485, Stop: 109787, Start Num: 90

Candidate Starts for Watermoore_216:

(Start: 87 @109473 has 7 MA's), (Start: 90 @109485 has 12 MA's), (Start: 92 @109497 has 8 MA's), (104, 109563), (116, 109617), (121, 109632), (152, 109767),

Gene: Watson_41 Start: 28595, Stop: 28185, Start Num: 60

Candidate Starts for Watson_41:

(Start: 60 @28595 has 15 MA's), (Start: 75 @28568 has 102 MA's), (Start: 89 @28523 has 6 MA's), (124, 28352), (126, 28340),

Gene: Weasels2_199 Start: 104456, Stop: 104812, Start Num: 77

Candidate Starts for Weasels2_199:

(Start: 77 @104456 has 6 MA's), (Start: 84 @104483 has 2 MA's), (Start: 90 @104507 has 12 MA's), (106, 104594), (142, 104735),

Gene: Wentworth_71 Start: 50670, Stop: 50269, Start Num: 82

Candidate Starts for Wentworth_71:

(Start: 66 @50700 has 3 MA's), (Start: 82 @50670 has 2 MA's), (Start: 86 @50658 has 1 MA's), (Start: 89 @50646 has 6 MA's), (Start: 95 @50604 has 1 MA's), (Start: 97 @50598 has 1 MA's), (127, 50448), (130, 50427), (139, 50397), (143, 50376),

Gene: Werner_34 Start: 26057, Stop: 26545, Start Num: 59

Candidate Starts for Werner_34:

(11, 25877), (14, 25913), (36, 26009), (Start: 59 @26057 has 35 MA's), (88, 26129), (94, 26165), (Start: 95 @26174 has 1 MA's), (103, 26222), (112, 26276), (131, 26351), (142, 26387), (143, 26393), (169, 26513), (173, 26540),

Gene: Whatever_34 Start: 26057, Stop: 26545, Start Num: 59

Candidate Starts for Whatever_34:

(11, 25877), (14, 25913), (36, 26009), (Start: 59 @26057 has 35 MA's), (88, 26129), (94, 26165), (103, 26222), (142, 26387), (143, 26393), (169, 26513), (173, 26540),

Gene: Wiks_39 Start: 26386, Stop: 25997, Start Num: 75

Candidate Starts for Wiks_39:

(Start: 75 @26386 has 102 MA's), (107, 26242), (113, 26197), (126, 26155), (130, 26128),

Gene: Wilkos_73 Start: 50809, Stop: 50432, Start Num: 89

Candidate Starts for Wilkos_73:

(Start: 66 @50863 has 3 MA's), (Start: 89 @50809 has 6 MA's), (Start: 97 @50761 has 1 MA's), (130, 50590), (139, 50560), (143, 50539), (144, 50536),

Gene: Wipeout_221 Start: 109952, Stop: 110320, Start Num: 63

Candidate Starts for Wipeout_221:

(Start: 63 @109952 has 23 MA's), (Start: 87 @110012 has 7 MA's), (Start: 92 @110036 has 8 MA's), (104, 110102), (110, 110123), (116, 110156), (121, 110171), (152, 110306),

Gene: Wofford_231 Start: 112242, Stop: 112598, Start Num: 66

Candidate Starts for Wofford_231:

(26, 112140), (27, 112149), (30, 112155), (31, 112170), (35, 112176), (54, 112212), (56, 112218), (Start: 66 @112242 has 3 MA's), (Start: 87 @112290 has 7 MA's), (Start: 92 @112314 has 8 MA's), (Start: 95 @112335 has 1 MA's), (104, 112380), (116, 112434), (121, 112449), (151, 112581),

Gene: Wooldri_43 Start: 28514, Stop: 28104, Start Num: 60

Candidate Starts for Wooldri_43:

(Start: 60 @28514 has 15 MA's), (Start: 75 @28487 has 102 MA's), (Start: 89 @28442 has 6 MA's), (124, 28271), (126, 28259),

Gene: WunderPhul_40 Start: 26384, Stop: 25995, Start Num: 75

Candidate Starts for WunderPhul_40:

(Start: 75 @26384 has 102 MA's), (107, 26240), (113, 26195), (126, 26153), (130, 26126),

Gene: Yaboi_233 Start: 109149, Stop: 109457, Start Num: 87

Candidate Starts for Yaboi_233:

(48, 109056), (56, 109074), (Start: 63 @109089 has 23 MA's), (Start: 87 @109149 has 7 MA's), (Start: 92 @109173 has 8 MA's), (Start: 95 @109194 has 1 MA's), (104, 109239), (116, 109293), (121, 109308),

Gene: Yara_67 Start: 49527, Stop: 49126, Start Num: 66

Candidate Starts for Yara_67:

(Start: 66 @49527 has 3 MA's), (94, 49440), (132, 49254), (143, 49221), (163, 49143),

Gene: Yasdniil_34 Start: 26106, Stop: 26594, Start Num: 59

Candidate Starts for Yasdniil_34:

(11, 25926), (36, 26058), (Start: 59 @26106 has 35 MA's), (88, 26178), (94, 26214), (Start: 95 @26223 has 1 MA's), (103, 26271), (142, 26436), (143, 26442), (169, 26562), (173, 26589),

Gene: Yokurt_40 Start: 26386, Stop: 25997, Start Num: 75

Candidate Starts for Yokurt_40:

(Start: 75 @26386 has 102 MA's), (107, 26242), (113, 26197), (126, 26155), (130, 26128),

Gene: Yosif_37 Start: 28173, Stop: 28583, Start Num: 74
Candidate Starts for Yosif_37:
(Start: 74 @28173 has 48 MA's), (91, 28227), (94, 28251), (143, 28494), (151, 28554), (153, 28560),

Gene: Zainub_41 Start: 27330, Stop: 27749, Start Num: 91
Candidate Starts for Zainub_41:
(Start: 76 @27276 has 20 MA's), (Start: 89 @27321 has 6 MA's), (91, 27330), (94, 27354), (Start: 95 @27363 has 1 MA's), (Start: 97 @27369 has 1 MA's), (112, 27465), (143, 27597), (169, 27717), (172, 27732),

Gene: Zaka_40 Start: 26386, Stop: 25997, Start Num: 75
Candidate Starts for Zaka_40:
(Start: 75 @26386 has 102 MA's), (107, 26242), (113, 26197), (126, 26155), (130, 26128),

Gene: Zeigle_54 Start: 29457, Stop: 29041, Start Num: 79
Candidate Starts for Zeigle_54:
(25, 29580), (69, 29472), (Start: 79 @29457 has 13 MA's), (126, 29229),

Gene: Zemlya_36 Start: 26609, Stop: 27091, Start Num: 72
Candidate Starts for Zemlya_36:
(23, 26504), (36, 26549), (Start: 72 @26609 has 11 MA's), (Start: 76 @26615 has 20 MA's), (94, 26693), (Start: 97 @26708 has 1 MA's), (135, 26903), (152, 27002), (169, 27059), (172, 27074), (173, 27086),

Gene: Zetzy_40 Start: 28139, Stop: 27756, Start Num: 75
Candidate Starts for Zetzy_40:
(Start: 60 @28166 has 15 MA's), (Start: 75 @28139 has 102 MA's), (Start: 89 @28094 has 6 MA's), (124, 27923), (126, 27911),

Gene: ZooBear_54 Start: 29438, Stop: 29022, Start Num: 79
Candidate Starts for ZooBear_54:
(Start: 57 @29480 has 4 MA's), (Start: 79 @29438 has 13 MA's), (Start: 97 @29351 has 1 MA's), (114, 29255), (115, 29252), (118, 29246), (133, 29168),

Gene: Zulu_40 Start: 26385, Stop: 25996, Start Num: 75
Candidate Starts for Zulu_40:
(Start: 75 @26385 has 102 MA's), (Start: 84 @26358 has 2 MA's), (107, 26241), (113, 26196), (126, 26154), (130, 26127),

Gene: phiBT1_20 Start: 34511, Stop: 34861, Start Num: 89
Candidate Starts for phiBT1_20:
(Start: 89 @34511 has 6 MA's), (Start: 95 @34553 has 1 MA's), (Start: 97 @34559 has 1 MA's), (98, 34577), (107, 34613), (152, 34835),

Gene: phiCAM_34 Start: 29556, Stop: 29906, Start Num: 91
Candidate Starts for phiCAM_34:
(Start: 74 @29499 has 48 MA's), (91, 29556), (94, 29580), (Start: 95 @29589 has 1 MA's), (101, 29622), (104, 29640), (132, 29772), (139, 29802), (142, 29817), (149, 29868), (151, 29883), (153, 29889),