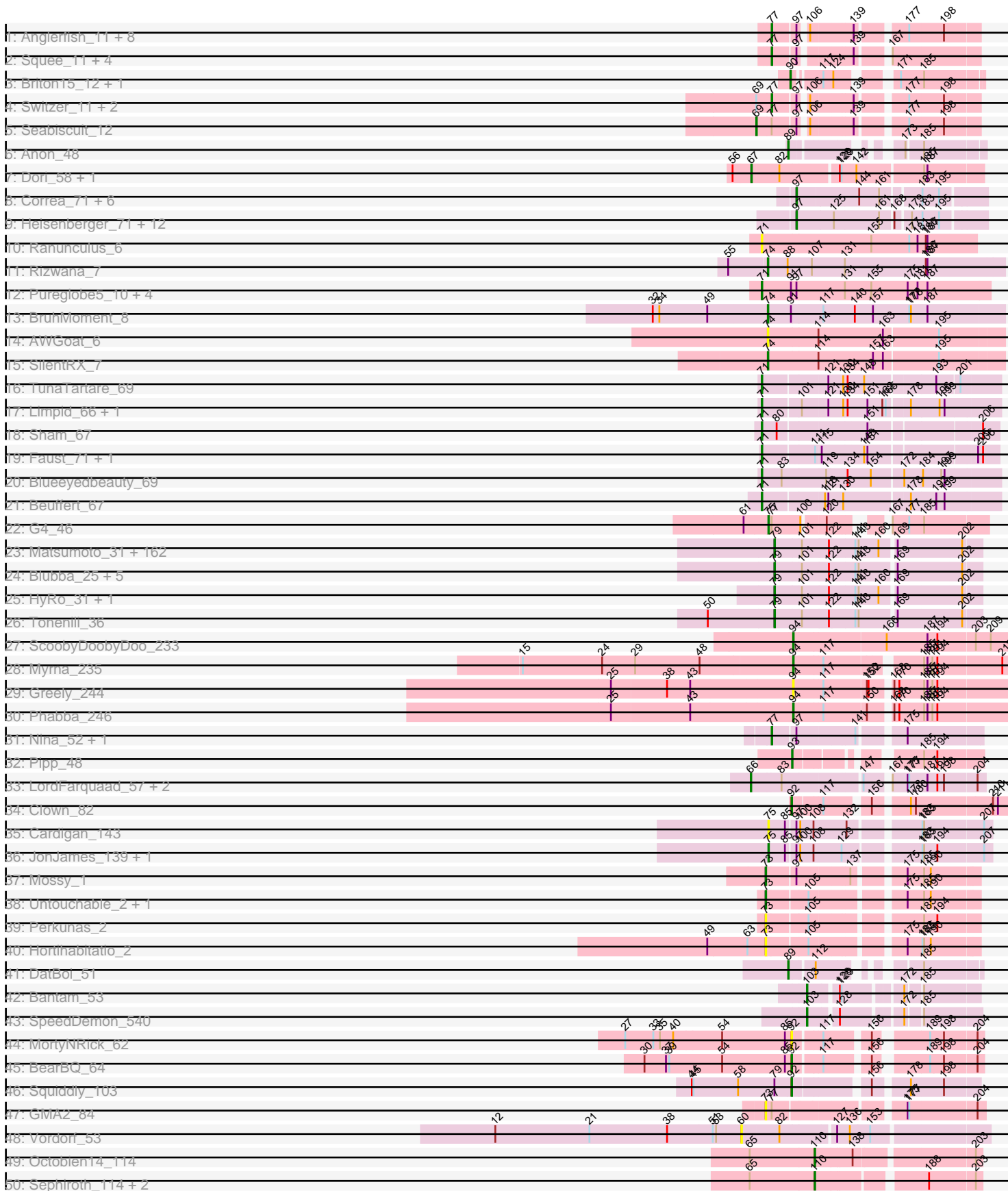
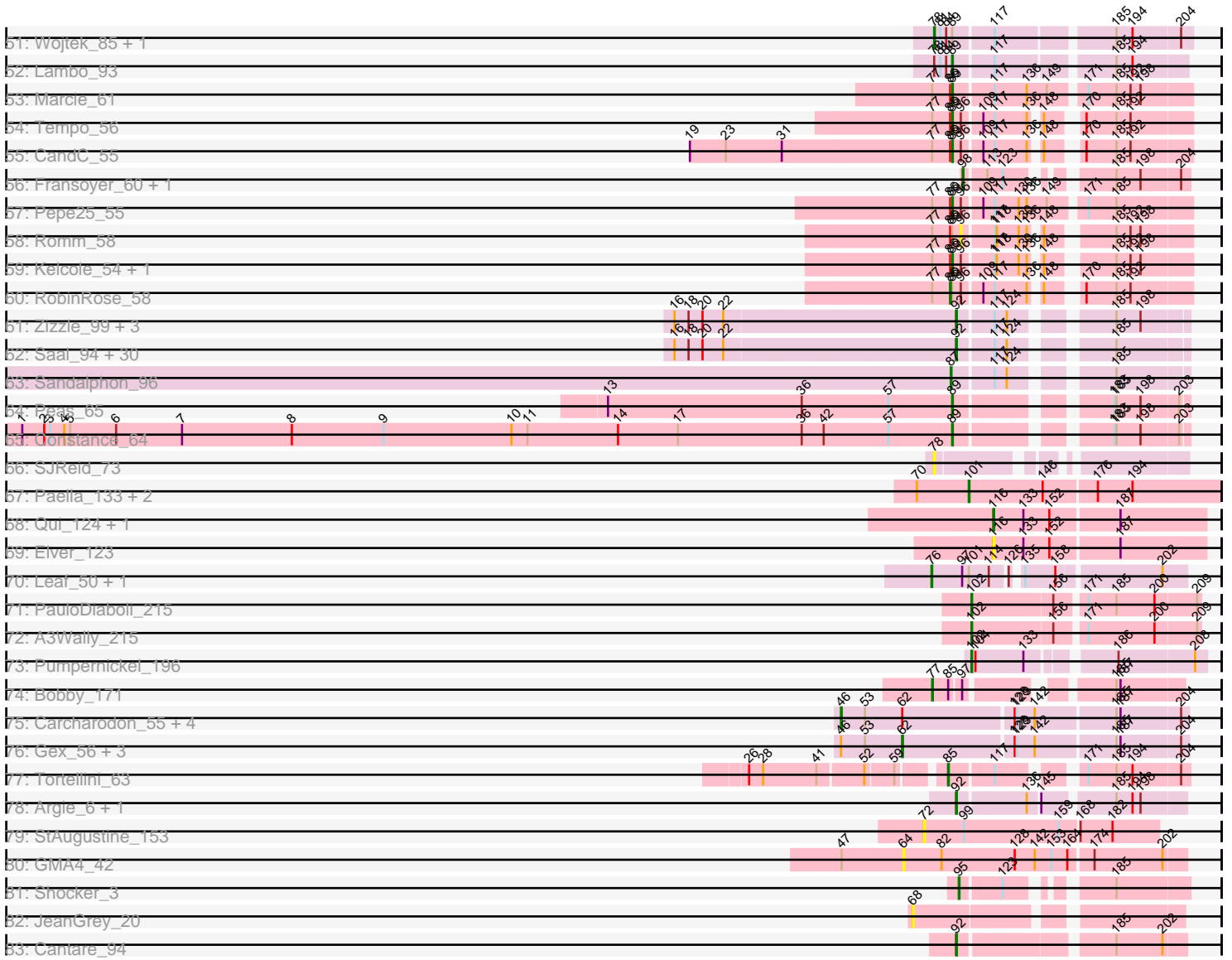


Pham 157507



Pham 157507



Note: Tracks are now grouped by subcluster and scaled. Switching in subcluster is indicated by changes in track color. Track scale is now set by default to display the region 30 bp upstream of start 1 to 30 bp downstream of the last possible start. If this default region is judged to be packed too tightly with annotated starts, the track will be further scaled to only show that region of the ORF with annotated starts. This action will be indicated by adding "Zoomed" to the title. For starts, yellow indicates the location of called starts comprised solely of Glimmer/GeneMark auto-annotations, green indicates the location of called starts with at least 1 manual gene annotation.

Pham 157507 Report

This analysis was run 04/13/24 on database version 558.

Pham number 157507 has 346 members, 39 are drafts.

Phages represented in each track:

- Track 1 : Anglerfish_11, Dynamix_11, Arcanine_11, Rajelicia_10, PinkPlastic_9, DreamCatcher_12, McGuire_11, Slagathor_11, Manatee_11
- Track 2 : Squee_11, BeesKnees_11, Atkinbua_11, Naira_11, Fenn_11
- Track 3 : Briton15_12, Ichabod_11
- Track 4 : Switzer_11, KSSJEB_10, U2_10
- Track 5 : Seabiscuit_12
- Track 6 : Anon_48
- Track 7 : Dori_58, Mask_58
- Track 8 : Correa_71, Xenomorph_69, Arcadia_72, Cheesy_73, Nason_72, Elsa_72, Tribby_76
- Track 9 : Heisenberger_71, Mooshroom_72, Hankly_72, GoCrazy_69, JEGGS_71, Circum_74, Kardesai_72, NapoleonB_73, BenitoAntonio_71, Benllo_73, Dynamite_72, Mudcat_68, KeaneyLin_68
- Track 10 : Ranunculus_6
- Track 11 : Rizwana_7
- Track 12 : Pureglobe5_10, Pointis_8, MellowYellow_7, Odyssey395_10, Beagle_10
- Track 13 : BruhMoment_8
- Track 14 : AWGoat_6
- Track 15 : SilentRX_7
- Track 16 : TunaTartare_69
- Track 17 : Limpid_66, Annadreamy_67
- Track 18 : Sham_67
- Track 19 : Faust_71, SeresaTree_71
- Track 20 : Blueeyedbeauty_69
- Track 21 : Beuffert_67
- Track 22 : G4_46
- Track 23 : Matsumoto_31, JayJay_33, ArcherS7_31, Napoleon13_31, Iota_29, Specks_37, Pier_34, Tortoise16_31, Shrimp_32, EmToTheThree_35, Koguma_28, CindyLou_32, Shnickers_32, CharlieB_32, SrishMeg2525_31, Daffodil_34, TinyTim_32, Spud_34, Atlantean_32, Norm_32, Sauce_33, NuevoMundo_35, Cactojaque_29, Littleton_32, Chomp_30, BigCity_36, Breeniome_32, Jedediah_32, Erdmann_33, EasyJones_31, Guwapp_32, DTDevon_33, FudgeTart_33, Sebata_32, Quasimodo_32, Ngannou_30, Babylant_31, Ghost_32, BackyardAgain_29, Chargie21_31, Roots515_32, Gizmo_34, Blackbrain_30, Maby2021_33, Catera_30, MikeLiesIn_32, Grungle_25, Drazdys_32, Mangeria_35, Asterius_30, JustHall_31, Bigswole_38, Derek_33, Izajani_33, Audrick_34, Bxz1_32, SmallFry_32, Phusco_32, EggyFarm_36, Concombres_31, ParkTD_31, Burrough_32, Lukilu_25, JulietS_27,

YoungMoneyMata_32, InterFolia_39, Gabriel_32, Loanshark_32, Fludd_31,
 RoMag_27, Melpomini_31, Willis_32, Jemmno_32, Naval22_34, Nappy_33,
 Salacia_34, BadAgartude_33, ET08_27, Mikro_30, QBert_30, McGee_31,
 BeanWater_28, Teardrop_31, BananaFence_33, Issimir_31, Rahel_32, IkeLoa_28,
 LifeSavor_33, Essence_31, Momo_31, Ewok_32, Bangla1971_31, Kboogie_32,
 Pleione_34, Lee7_31, Kamryn_32, Bonray_32, Ading_32, Yucca_32,
 Jessibeth14_31, NedWong_33, Tyke_34, Trinitium_31, Delilah_32,
 StubbySaigey_31, Janiyra_32, ErnieJ_33, LolaVinca_35, Shaqnato_28,
 Gamgam_32, Capablanca_34, Pivoine_32, Zeenon_34, NoodleTree_31,
 EmmaElysia_30, Nidhogg_33, Cali_32, Spec_30, YemiJoy2021_33, Yassified_29,
 Grasshills_36, Naija_32, Phox_31, LRRHood_29, ZygoTaiga_32, MoMoMixon_33,
 Astraea_33, Caravan_30, Pio_35, McWolfish_31, Phlegm_34, InigoMontoya_33,
 Morizzled23_31, Adlitam_32, ChickenPhender_31, Amataga_32, PurduePete_31,
 Sprinklers_32, Turret_30, Rizal_30, Patter_32, Zalkecks_34, Darko_31, Bread_33,
 Khaleesi_31, Ronan_27, Latch_32, FoxtrotP1_32, ShiaLabeouf_32,
 ValleyTerrace_32, ScottMcG_32, Basquiat_31, StephanieG_32, Dandelion_36,
 SilverDipper_33, DrPhinkDaddy_32, Bipolarisk_31, JPickles_30, Wally_31,
 ChaylaJr_31, Megamind_32, Ava3_33, Jaygup_32
 • Track 24 : Blubba_25, LordLeafolot_37, FrayBell_38, l3_34, DirtMonster_31,
 Dietrick_27
 • Track 25 : HyRo_31, Shifa_29
 • Track 26 : Tonenili_36
 • Track 27 : ScoobyDoobyDoo_233
 • Track 28 : Myrna_235
 • Track 29 : Greely_244
 • Track 30 : Phabba_246
 • Track 31 : Nina_52, RedBaron_55
 • Track 32 : Pipp_48
 • Track 33 : LordFarquaad_57, Attis_55, SoilAssassin_55
 • Track 34 : Clown_82
 • Track 35 : Cardigan_143
 • Track 36 : JonJames_139, Yvonnetastic_136
 • Track 37 : Mossy_1
 • Track 38 : Untouchable_2, Crocheter_2
 • Track 39 : Perkunas_2
 • Track 40 : Hortihabitatio_2
 • Track 41 : DatBoi_51
 • Track 42 : Bantam_53
 • Track 43 : SpeedDemon_540
 • Track 44 : MortyNRick_62
 • Track 45 : BearBQ_64
 • Track 46 : Squiddly_103
 • Track 47 : GMA2_84
 • Track 48 : Vordorf_53
 • Track 49 : Octobien14_114
 • Track 50 : Sephiroth_114, Kudefre_118, Syleon_119
 • Track 51 : Wojtek_85, ParvusTarda_93
 • Track 52 : Lambo_93
 • Track 53 : Marcie_61
 • Track 54 : Tempo_56
 • Track 55 : CandC_55
 • Track 56 : Fransoyer_60, SadLad_63
 • Track 57 : Pepe25_55

- Track 58 : Romm_58
- Track 59 : Kelcole_54, OneinaGillian_56
- Track 60 : RobinRose_58
- Track 61 : Zizzle_99, BobaPhett_98, ShiLan_99, Mattes_97
- Track 62 : Saal_94, Lizziana_97, Clifton_88, Nivrat_96, Philus_98, Burwell21_90, Whouxphf_100, NormanBulbieJr_94, Latretium_99, Brocalys_88, Yorick_92, Spoonbill_96, FreddyB_106, Maravista_93, Martik_95, LastJedi_87, Crumble_90, Pippy_94, LilMoolah_99, Cabrinians_93, Minnie_91, James_100, OlympiaSaint_100, Blexus_93, SwagPigglett_98, Priscilla_97, ShowerHandel_94, Gorge_95, ByChance_87, Jarcob_99, Koella_89
- Track 63 : Sandalphon_96
- Track 64 : Peas_65
- Track 65 : Constance_64
- Track 66 : SJReid_73
- Track 67 : Paella_133, Elver_131, Qui_133
- Track 68 : Qui_124, Paella_124
- Track 69 : Elver_123
- Track 70 : Leaf_50, Dewdrop_50
- Track 71 : PauloDiaboli_215
- Track 72 : A3Wally_215
- Track 73 : Pumpernickel_196
- Track 74 : Bobby_171
- Track 75 : Carcharodon_55, Schnauzer_56, Parmesanjohn_55, Phloss_53, Smurph_55
- Track 76 : Gex_56, Magsby_55, Xerxes_55, Pipsqueaks_56
- Track 77 : Tortellini_63
- Track 78 : Argie_6, GodPhather_6
- Track 79 : StAugustine_153
- Track 80 : GMA4_42
- Track 81 : Shocker_3
- Track 82 : JeanGrey_20
- Track 83 : Cantare_94

Summary of Final Annotations (See graph section above for start numbers):

The start number called the most often in the published annotations is 79, it was called in 157 of the 307 non-draft genes in the pham.

Genes that call this "Most Annotated" start:

- Ading_32, Adlitam_32, Amataga_32, ArcherS7_31, Asterius_30, Astraea_33, Atlantean_32, Audrick_34, Ava3_33, Babyland_31, BackyardAgain_29, BadAgartude_33, BananaFence_33, Bangla1971_31, Basquiat_31, BeanWater_28, BigCity_36, Bigswole_38, Bipolarisk_31, Blackbrain_30, Blubba_25, Bonray_32, Bread_33, Breeniome_32, Burrough_32, Bxz1_32, Cactojaque_29, Cali_32, Capablanca_34, Caravan_30, Catera_30, Chargie21_31, CharlieB_32, ChaylaJr_31, ChickenPhender_31, Chomp_30, CindyLou_32, Concombre_31, DTDevon_33, Daffodil_34, Dandelion_36, Darko_31, Delilah_32, Derek_33, Dietrick_27, DirtMonster_31, DrPhinkDaddy_32, Drazdys_32, ET08_27, EasyJones_31, EggyFarm_36, EmToTheThree_35, EmmaElysia_30, Erdmann_33, ErnieJ_33, Essence_31, Ewok_32, Fludd_31, FoxtrotP1_32, FrayBell_38, FudgeTart_33,

Gabriel_32, Gamgam_32, Ghost_32, Gizmo_34, Grasshills_36, Grungle_25, Guwapp_32, HyRo_31, I3_34, IkeLoa_28, InigoMontoya_33, InterFolia_39, Iota_29, Issimir_31, Izajani_33, JPickles_30, Janiyra_32, JayJay_33, Jaygup_32, Jedediah_32, Jemmno_32, Jessibeth14_31, JulietS_27, JustHall_31, Kamryn_32, Kboogie_32, Khaleesi_31, Koguma_28, LRRHood_29, Latch_32, Lee7_31, LifeSavor_33, Littleton_32, Loanshark_32, LolaVinca_35, LordLeafolot_37, Lukilu_25, Maby2021_33, Mangeria_35, Matsumoto_31, McGee_31, McWolfish_31, Megamind_32, Melpomini_31, MikeLiesIn_32, Mikro_30, MoMoMixon_33, Momo_31, Morizzled23_31, Naija_32, Napoleon13_31, Nappy_33, Naval22_34, NedWong_33, Ngannou_30, Nidhogg_33, NoodleTree_31, Norm_32, NuevoMundo_35, ParkTD_31, Patter_32, Phlegm_34, Phox_31, Phusco_32, Pier_34, Pio_35, Pivoine_32, Pleione_34, PurduePete_31, QBert_30, Quasimodo_32, Rahel_32, Rizal_30, RoMag_27, Ronan_27, Roots515_32, Salacia_34, Sauce_33, ScottMcG_32, Sebata_32, Shaqnato_28, ShiaLabeouf_32, Shifa_29, Shnickers_32, Shrimp_32, SilverDipper_33, SmallFry_32, Spec_30, Specks_37, Sprinklers_32, Spud_34, SrishMeg2525_31, StephanieG_32, StubbySaigey_31, Teardrop_31, TinyTim_32, Tonenili_36, Tortoise16_31, Trinitium_31, Turret_30, Tyke_34, ValleyTerrace_32, Wally_31, Willis_32, Yassified_29, YemiJoy2021_33, YoungMoneyMata_32, Yucca_32, Zalkecks_34, Zeenon_34, ZygoTaiga_32,

Genes that have the "Most Annotated" start but do not call it:

- Squiddly_103,

Genes that do not have the "Most Annotated" start:

- A3Wally_215, AWGoat_6, Anglerfish_11, Annadreamy_67, Anon_48, Arcadia_72, Arcanine_11, Argie_6, Atkinbua_11, Attis_55, Bantam_53, Beagle_10, BearBQ_64, BeesKnees_11, BenitoAntonio_71, Benllo_73, Beuffert_67, Blexus_93, Blueeyedbeauty_69, BobaPhett_98, Bobby_171, Briton15_12, Brocalys_88, BruhMoment_8, Burwell21_90, ByChance_87, Cabrinians_93, CandC_55, Cantare_94, Carcharodon_55, Cardigan_143, Cheesy_73, Circum_74, Clifton_88, Clown_82, Constance_64, Correa_71, Crocheter_2, Crumble_90, DatBoi_51, Dewdrop_50, Dori_58, DreamCatcher_12, Dynamite_72, Dynamix_11, Elsa_72, Elver_123, Elver_131, Faust_71, Fenn_11, Fransoyer_60, FreddyB_106, G4_46, GMA2_84, GMA4_42, Gex_56, GoCrazy_69, GodPhather_6, Gorge_95, Greely_244, Hankly_72, Heisenberger_71, Hortihabitatio_2, Ichabod_11, JEGGS_71, James_100, Jarcob_99, JeanGrey_20, JonJames_139, KSSJEB_10, Kardesai_72, KeaneyLin_68, Kelcole_54, Koella_89, Kudrefre_118, Lambo_93, LastJedi_87, Latretium_99, Leaf_50, LilMoolah_99, Limpid_66, Lizziana_97, LordFarquaad_57, Magsby_55, Manatee_11, Maravista_93, Marcie_61, Martik_95, Mask_58, Mattes_97, McGuire_11, MellowYellow_7, Minnie_91, Mooshroom_72, MortyNRick_62, Mossy_1, Mudcat_68, Myrna_235, Naira_11, NapoleonB_73, Nason_72, Nina_52, Nivrat_96, NormanBulbieJr_94, Octobien14_114, Odyssey395_10, OlympiaSaint_100, OneinaGillian_56, Paella_124, Paella_133, Parmesanjohn_55, ParvusTarda_93, PauloDiaboli_215, Peas_65, Pepe25_55, Perunas_2, Phabba_246, Philus_98, Phloss_53, PinkPlastic_9, Pipp_48, Pippy_94, Pipsqueaks_56, Pointis_8, Priscilla_97, Pumpernickel_196, Pureglobe5_10, Qui_124, Qui_133, Rajelicia_10, Ranunculus_6, RedBaron_55, Rizwana_7, RobinRose_58, Romm_58, SJReid_73, Saal_94, SadLad_63, Sandalphon_96, Schnauzer_56, ScoobyDoobyDoo_233, Seabiscuit_12, Sephiroth_114, SeresaTree_71, Sham_67, ShiLan_99, Shocker_3, ShowerHandel_94, SilentRX_7, Slagathor_11, Smurph_55, SoilAssassin_55, SpeedDemon_540, Spoonbill_96, Squee_11, StAugustine_153, SwagPiggett_98, Switzer_11, Syleon_119, Tempo_56, Tortellini_63, Tribby_76, TunaTartare_69, U2_10, Untouchable_2, Vordorf_53, Whouxphf_100, Wojtek_85,

Xenomorph_69, Xerxes_55, Yorick_92, Yvonnetastic_136, Zizzle_99,

Summary by start number:

Start 46:

- Found in 9 of 346 (2.6%) of genes in pham
- Manual Annotations of this start: 5 of 307
- Called 55.6% of time when present
- Phage (with cluster) where this start called: Carcharodon_55 (N), Parmesanjohn_55 (N), Phloss_53 (N), Schnauzer_56 (N), Smurph_55 (N),

Start 60:

- Found in 1 of 346 (0.3%) of genes in pham
- No Manual Annotations of this start.
- Called 100.0% of time when present
- Phage (with cluster) where this start called: Vordorf_53 (DT),

Start 62:

- Found in 9 of 346 (2.6%) of genes in pham
- Manual Annotations of this start: 4 of 307
- Called 44.4% of time when present
- Phage (with cluster) where this start called: Gex_56 (N), Magsby_55 (N), Pipsqueaks_56 (N), Xerxes_55 (N),

Start 64:

- Found in 1 of 346 (0.3%) of genes in pham
- No Manual Annotations of this start.
- Called 100.0% of time when present
- Phage (with cluster) where this start called: GMA4_42 (singleton),

Start 66:

- Found in 3 of 346 (0.9%) of genes in pham
- Manual Annotations of this start: 3 of 307
- Called 100.0% of time when present
- Phage (with cluster) where this start called: Attis_55 (CZ2), LordFarquaad_57 (CZ2), SoilAssassin_55 (CZ2),

Start 67:

- Found in 2 of 346 (0.6%) of genes in pham
- Manual Annotations of this start: 2 of 307
- Called 100.0% of time when present
- Phage (with cluster) where this start called: Dori_58 (AD), Mask_58 (AD),

Start 68:

- Found in 1 of 346 (0.3%) of genes in pham
- No Manual Annotations of this start.
- Called 100.0% of time when present
- Phage (with cluster) where this start called: JeanGrey_20 (singleton),

Start 69:

- Found in 4 of 346 (1.2%) of genes in pham
- Manual Annotations of this start: 1 of 307
- Called 25.0% of time when present

- Phage (with cluster) where this start called: Seabiscuit_12 (A1),

Start 71:

- Found in 14 of 346 (4.0%) of genes in pham
- Manual Annotations of this start: 10 of 307
- Called 100.0% of time when present
- Phage (with cluster) where this start called: Annadreamy_67 (BK1), Beagle_10 (AP2), Beuffert_67 (BK1), Blueeyedbeauty_69 (BK1), Faust_71 (BK1), Limpid_66 (BK1), MellowYellow_7 (AP2), Odyssey395_10 (AP2), Pointis_8 (AP2), Pureglobe5_10 (AP2), Ranunculus_6 (AP), SeresaTree_71 (BK1), Sham_67 (BK1), TunaTartare_69 (BK1),

Start 72:

- Found in 1 of 346 (0.3%) of genes in pham
- No Manual Annotations of this start.
- Called 100.0% of time when present
- Phage (with cluster) where this start called: StAugustine_153 (singleton),

Start 73:

- Found in 6 of 346 (1.7%) of genes in pham
- Manual Annotations of this start: 3 of 307
- Called 100.0% of time when present
- Phage (with cluster) where this start called: Crocheter_2 (DJ), GMA2_84 (DS), Hortihabitatio_2 (DJ), Mossy_1 (DJ), Perkunas_2 (DJ), Untouchable_2 (DJ),

Start 74:

- Found in 4 of 346 (1.2%) of genes in pham
- Manual Annotations of this start: 3 of 307
- Called 100.0% of time when present
- Phage (with cluster) where this start called: AWGoat_6 (AP4), BruhMoment_8 (AP3), Rizwana_7 (AP1), SilentRX_7 (AP4),

Start 75:

- Found in 4 of 346 (1.2%) of genes in pham
- Manual Annotations of this start: 3 of 307
- Called 100.0% of time when present
- Phage (with cluster) where this start called: Cardigan_143 (DD), G4_46 (BW), JonJames_139 (DD), Yvonnetastic_136 (DD),

Start 76:

- Found in 2 of 346 (0.6%) of genes in pham
- Manual Annotations of this start: 2 of 307
- Called 100.0% of time when present
- Phage (with cluster) where this start called: Dewdrop_50 (GC), Leaf_50 (GC),

Start 77:

- Found in 31 of 346 (9.0%) of genes in pham
- Manual Annotations of this start: 19 of 307
- Called 64.5% of time when present
- Phage (with cluster) where this start called: Anglerfish_11 (A1), Arcanine_11 (A1), Atkinbua_11 (A1), BeesKnees_11 (A1), Bobby_171 (J), DreamCatcher_12 (A1), Dynamix_11 (A1), Fenn_11 (A1), KSSJEB_10 (A1), Manatee_11 (A1), McGuire_11 (A1), Naira_11 (A1), Nina_52 (CT), PinkPlastic_9 (A1), Rajelicia_10 (A1),

RedBaron_55 (CT), Slagathor_11 (A1), Squee_11 (A1), Switzer_11 (A1), U2_10 (A1),

Start 78:

- Found in 4 of 346 (1.2%) of genes in pham
- Manual Annotations of this start: 2 of 307
- Called 75.0% of time when present
- Phage (with cluster) where this start called: ParvusTarda_93 (DV), SJReid_73 (FC), Wojtek_85 (DV),

Start 79:

- Found in 173 of 346 (50.0%) of genes in pham
- Manual Annotations of this start: 157 of 307
- Called 99.4% of time when present
- Phage (with cluster) where this start called: Ading_32 (C1), Adlitam_32 (C1), Amataga_32 (C1), ArcherS7_31 (C1), Asterius_30 (C1), Astraea_33 (C1), Atlantean_32 (C1), Audrick_34 (C1), Ava3_33 (C1), Babyland_31 (C1), BackyardAgain_29 (C1), BadAgartude_33 (C1), BananaFence_33 (C1), Bangla1971_31 (C1), Basquiat_31 (C1), BeanWater_28 (C1), BigCity_36 (C1), Bigswole_38 (C1), Bipolarisk_31 (C1), Blackbrain_30 (C1), Blubba_25 (C1), Bonray_32 (C1), Bread_33 (C1), Breeniome_32 (C1), Burrough_32 (C1), Bxz1_32 (C1), Cactojaque_29 (C1), Cali_32 (C1), Capablanca_34 (C1), Caravan_30 (C1), Catera_30 (C1), Chargie21_31 (C1), CharlieB_32 (C1), ChaylaJr_31 (C1), ChickenPhender_31 (C1), Chomp_30 (C1), CindyLou_32 (C1), Concombre_31 (C1), DTDevon_33 (C1), Daffodil_34 (C1), Dandelion_36 (C1), Darko_31 (C1), Delilah_32 (C1), Derek_33 (C1), Dietrick_27 (C1), DirtMonster_31 (C1), DrPhinkDaddy_32 (C1), Drazdys_32 (C1), ET08_27 (C1), EasyJones_31 (C1), EggyFarm_36 (C1), EmToTheThree_35 (C1), EmmaElysia_30 (C1), Erdmann_33 (C1), ErnieJ_33 (C1), Essence_31 (C1), Ewok_32 (C1), Fludd_31 (C1), FoxtrotP1_32 (C1), FrayBell_38 (C1), FudgeTart_33 (C1), Gabriel_32 (C1), Gangam_32 (C1), Ghost_32 (C1), Gizmo_34 (C1), Grasshills_36 (C1), Grungle_25 (C1), Guwapp_32 (C1), HyRo_31 (C1), I3_34 (C1), IkeLoa_28 (C1), InigoMontoya_33 (C1), InterFolia_39 (C1), Iota_29 (C1), Issimir_31 (C1), Izajani_33 (C1), JPickles_30 (C1), Janiyra_32 (C1), JayJay_33 (C1), Jaygup_32 (C1), Jedediah_32 (C1), Jemmno_32 (C1), Jessibeth14_31 (C1), JulietS_27 (C1), JustHall_31 (C1), Kamryn_32 (C1), Kboogie_32 (C1), Khaleesi_31 (C1), Koguma_28 (C1), LRRHood_29 (C1), Latch_32 (C1), Lee7_31 (C1), LifeSavor_33 (C1), Littleton_32 (C1), Loanshark_32 (C1), LolaVinca_35 (C1), LordLeafolot_37 (C1), Lukilu_25 (C1), Maby2021_33 (C1), Mangeria_35 (C1), Matsumoto_31 (C1), McGee_31 (C1), McWolfish_31 (C1), Megamind_32 (C1), Melpomini_31 (C1), MikeLiesIn_32 (C1), Mikro_30 (C1), MoMoMixon_33 (C1), Momo_31 (C1), Morizzled23_31 (C1), Naija_32 (C1), Napoleon13_31 (C1), Nappy_33 (C1), Naval22_34 (C1), NedWong_33 (C1), Ngannou_30 (C1), Nidhogg_33 (C1), NoodleTree_31 (C1), Norm_32 (C1), NuevoMundo_35 (C1), ParkTD_31 (C1), Patter_32 (C1), Phlegm_34 (C1), Phox_31 (C1), Phusco_32 (C1), Pier_34 (C1), Pio_35 (C1), Pivoine_32 (C1), Pleione_34 (C1), PurduePete_31 (C1), QBert_30 (C1), Quasimodo_32 (C1), Rahel_32 (C1), Rizal_30 (C1), RoMag_27 (C1), Ronan_27 (C1), Roots515_32 (C1), Salacia_34 (C1), Sauce_33 (C1), ScottMcG_32 (C1), Sebata_32 (C1), Shaqnato_28 (C1), ShiaLabeouf_32 (C1), Shifa_29 (C1), Shnickers_32 (C1), Shrimp_32 (C1), SilverDipper_33 (C1), SmallFry_32 (C1), Spec_30 (C1), Specks_37 (C1), Sprinklers_32 (C1), Spud_34 (C1), SrishMeg2525_31 (C1), StephanieG_32 (C1), StubbySaigey_31 (C1), Teardrop_31 (C1), TinyTim_32 (C1), Tonenili_36 (C1), Tortoise16_31 (C1), Trinitium_31 (C1), Turret_30 (C1), Tyke_34 (C1), ValleyTerrace_32 (C1), Wally_31 (C1), Willis_32 (C1),

Yassified_29 (C1), YemiJoy2021_33 (C1), YoungMoneyMata_32 (C1), Yucca_32 (C1), Zalkecks_34 (C1), Zeenon_34 (C1), ZygoTaiga_32 (C1),

Start 85:

- Found in 7 of 346 (2.0%) of genes in pham
- Manual Annotations of this start: 1 of 307
- Called 14.3% of time when present
- Phage (with cluster) where this start called: Tortellini_63 (P2),

Start 86:

- Found in 8 of 346 (2.3%) of genes in pham
- Manual Annotations of this start: 1 of 307
- Called 12.5% of time when present
- Phage (with cluster) where this start called: RobinRose_58 (EG),

Start 87:

- Found in 1 of 346 (0.3%) of genes in pham
- Manual Annotations of this start: 1 of 307
- Called 100.0% of time when present
- Phage (with cluster) where this start called: Sandalphon_96 (F1),

Start 89:

- Found in 15 of 346 (4.3%) of genes in pham
- Manual Annotations of this start: 11 of 307
- Called 73.3% of time when present
- Phage (with cluster) where this start called: Anon_48 (A15), CandC_55 (EG), Constance_64 (FA), DatBoi_51 (DL), Kelcole_54 (EG), Lambo_93 (DV), Marcie_61 (EG), OneinaGillian_56 (EG), Peas_65 (FA), Pepe25_55 (EG), Tempo_56 (EG),

Start 90:

- Found in 2 of 346 (0.6%) of genes in pham
- Manual Annotations of this start: 2 of 307
- Called 100.0% of time when present
- Phage (with cluster) where this start called: Briton15_12 (A1), Ichabod_11 (A1),

Start 92:

- Found in 42 of 346 (12.1%) of genes in pham
- Manual Annotations of this start: 39 of 307
- Called 100.0% of time when present
- Phage (with cluster) where this start called: Argie_6 (W), BearBQ_64 (DN), Blexus_93 (F1), BobaPhett_98 (F1), Brocalys_88 (F1), Burwell21_90 (F1), ByChance_87 (F1), Cabrinians_93 (F1), Cantare_94 (singleton), Clifton_88 (F1), Clown_82 (DC2), Crumble_90 (F1), FreddyB_106 (F1), GodPhather_6 (W), Gorge_95 (F1), James_100 (F1), Jarcob_99 (F1), Koella_89 (F1), LastJedi_87 (F1), Latretium_99 (F1), LilMoolah_99 (F1), Lizziana_97 (F1), Maravista_93 (F1), Martik_95 (F1), Mattes_97 (F1), Minnie_91 (F1), MortyNRick_62 (DN), Nivrat_96 (F1), NormanBulbieJr_94 (F1), OlympiaSaint_100 (F1), Philus_98 (F1), Pippy_94 (F1), Priscilla_97 (F1), Saal_94 (F1), ShiLan_99 (F1), ShowerHandel_94 (F1), Spoonbill_96 (F1), Squiddly_103 (DN2), SwagPiggett_98 (F1), Whouxphf_100 (F1), Yorick_92 (F1), Zizzle_99 (F1),

Start 93:

- Found in 1 of 346 (0.3%) of genes in pham

- Manual Annotations of this start: 1 of 307
- Called 100.0% of time when present
- Phage (with cluster) where this start called: Pipp_48 (CV),

Start 94:

- Found in 4 of 346 (1.2%) of genes in pham
- Manual Annotations of this start: 3 of 307
- Called 100.0% of time when present
- Phage (with cluster) where this start called: Greely_244 (C2), Myrna_235 (C2), Phabba_246 (C2), ScoobyDoobyDoo_233 (C2),

Start 95:

- Found in 1 of 346 (0.3%) of genes in pham
- Manual Annotations of this start: 1 of 307
- Called 100.0% of time when present
- Phage (with cluster) where this start called: Shocker_3 (singleton),

Start 96:

- Found in 7 of 346 (2.0%) of genes in pham
- No Manual Annotations of this start.
- Called 14.3% of time when present
- Phage (with cluster) where this start called: Romm_58 (EG),

Start 97:

- Found in 52 of 346 (15.0%) of genes in pham
- Manual Annotations of this start: 18 of 307
- Called 38.5% of time when present
- Phage (with cluster) where this start called: Arcadia_72 (AM), BenitoAntonio_71 (AM), Benllo_73 (AM), Cheesy_73 (AM), Circum_74 (AM), Correa_71 (AM), Dynamite_72 (AM), Elsa_72 (AM), GoCrazy_69 (AM), Hankly_72 (AM), Heisenberger_71 (AM), JEGGS_71 (AM), Kardesai_72 (AM), KeaneyLin_68 (AM), Mooshroom_72 (AM), Mudcat_68 (AM), NapoleonB_73 (AM), Nason_72 (AM), Tribby_76 (AM), Xenomorph_69 (AM),

Start 98:

- Found in 2 of 346 (0.6%) of genes in pham
- Manual Annotations of this start: 2 of 307
- Called 100.0% of time when present
- Phage (with cluster) where this start called: Fransoyer_60 (EG), SadLad_63 (EG),

Start 101:

- Found in 179 of 346 (51.7%) of genes in pham
- Manual Annotations of this start: 2 of 307
- Called 1.7% of time when present
- Phage (with cluster) where this start called: Elver_131 (FK), Paella_133 (FK), Qui_133 (FK),

Start 102:

- Found in 3 of 346 (0.9%) of genes in pham
- Manual Annotations of this start: 3 of 307
- Called 100.0% of time when present
- Phage (with cluster) where this start called: A3Wally_215 (GD1), PauloDiaboli_215 (GD1), Pumpernickel_196 (GD4),

Start 103:

- Found in 2 of 346 (0.6%) of genes in pham
- Manual Annotations of this start: 2 of 307
- Called 100.0% of time when present
- Phage (with cluster) where this start called: Bantam_53 (DL), SpeedDemon_540 (DL),

Start 110:

- Found in 4 of 346 (1.2%) of genes in pham
- Manual Annotations of this start: 4 of 307
- Called 100.0% of time when present
- Phage (with cluster) where this start called: Kudrefre_118 (DU1), Octobien14_114 (DU1), Sephiroth_114 (DU1), Syleon_119 (DU1),

Start 116:

- Found in 3 of 346 (0.9%) of genes in pham
- Manual Annotations of this start: 2 of 307
- Called 100.0% of time when present
- Phage (with cluster) where this start called: Elver_123 (FK), Paella_124 (FK), Qui_124 (FK),

Summary by clusters:

There are 39 clusters represented in this pham: DN, GD1, singleton, GD4, CZ2, AP3, DD, AP1, DL, AP4, FA, BW, DV, DJ, DT, FK, DS, A15, A1, AP2, DN2, DU1, C1, P2, AD, EG, J, AM, N, AP, GC, BK1, W, C2, DC2, CV, CT, F1, FC,

Info for manual annotations of cluster A1:

- Start number 69 was manually annotated 1 time for cluster A1.
- Start number 77 was manually annotated 17 times for cluster A1.
- Start number 90 was manually annotated 2 times for cluster A1.

Info for manual annotations of cluster A15:

- Start number 89 was manually annotated 1 time for cluster A15.

Info for manual annotations of cluster AD:

- Start number 67 was manually annotated 2 times for cluster AD.

Info for manual annotations of cluster AM:

- Start number 97 was manually annotated 18 times for cluster AM.

Info for manual annotations of cluster AP1:

- Start number 74 was manually annotated 1 time for cluster AP1.

Info for manual annotations of cluster AP2:

- Start number 71 was manually annotated 3 times for cluster AP2.

Info for manual annotations of cluster AP3:

- Start number 74 was manually annotated 1 time for cluster AP3.

Info for manual annotations of cluster AP4:

- Start number 74 was manually annotated 1 time for cluster AP4.

Info for manual annotations of cluster BK1:

- Start number 71 was manually annotated 7 times for cluster BK1.

Info for manual annotations of cluster BW:

- Start number 75 was manually annotated 1 time for cluster BW.

Info for manual annotations of cluster C1:

- Start number 79 was manually annotated 157 times for cluster C1.

Info for manual annotations of cluster C2:

- Start number 94 was manually annotated 3 times for cluster C2.

Info for manual annotations of cluster CT:

- Start number 77 was manually annotated 1 time for cluster CT.

Info for manual annotations of cluster CV:

- Start number 93 was manually annotated 1 time for cluster CV.

Info for manual annotations of cluster CZ2:

- Start number 66 was manually annotated 3 times for cluster CZ2.

Info for manual annotations of cluster DC2:

- Start number 92 was manually annotated 1 time for cluster DC2.

Info for manual annotations of cluster DD:

- Start number 75 was manually annotated 2 times for cluster DD.

Info for manual annotations of cluster DJ:

- Start number 73 was manually annotated 3 times for cluster DJ.

Info for manual annotations of cluster DL:

- Start number 89 was manually annotated 1 time for cluster DL.
- Start number 103 was manually annotated 2 times for cluster DL.

Info for manual annotations of cluster DN:

- Start number 92 was manually annotated 1 time for cluster DN.

Info for manual annotations of cluster DN2:

- Start number 92 was manually annotated 1 time for cluster DN2.

Info for manual annotations of cluster DU1:

- Start number 110 was manually annotated 4 times for cluster DU1.

Info for manual annotations of cluster DV:

- Start number 78 was manually annotated 2 times for cluster DV.
- Start number 89 was manually annotated 1 time for cluster DV.

Info for manual annotations of cluster EG:

- Start number 86 was manually annotated 1 time for cluster EG.

- Start number 89 was manually annotated 6 times for cluster EG.
- Start number 98 was manually annotated 2 times for cluster EG.

Info for manual annotations of cluster F1:

- Start number 87 was manually annotated 1 time for cluster F1.
- Start number 92 was manually annotated 33 times for cluster F1.

Info for manual annotations of cluster FA:

- Start number 89 was manually annotated 2 times for cluster FA.

Info for manual annotations of cluster FK:

- Start number 101 was manually annotated 2 times for cluster FK.
- Start number 116 was manually annotated 2 times for cluster FK.

Info for manual annotations of cluster GC:

- Start number 76 was manually annotated 2 times for cluster GC.

Info for manual annotations of cluster GD1:

- Start number 102 was manually annotated 2 times for cluster GD1.

Info for manual annotations of cluster GD4:

- Start number 102 was manually annotated 1 time for cluster GD4.

Info for manual annotations of cluster J:

- Start number 77 was manually annotated 1 time for cluster J.

Info for manual annotations of cluster N:

- Start number 46 was manually annotated 5 times for cluster N.
- Start number 62 was manually annotated 4 times for cluster N.

Info for manual annotations of cluster P2:

- Start number 85 was manually annotated 1 time for cluster P2.

Info for manual annotations of cluster W:

- Start number 92 was manually annotated 2 times for cluster W.

Gene Information:

Gene: A3Wally_215 Start: 115440, Stop: 115123, Start Num: 102

Candidate Starts for A3Wally_215:

(Start: 102 @115440 has 3 MA's), (156, 115323), (171, 115284), (200, 115188), (209, 115128),

Gene: AWGoat_6 Start: 2566, Stop: 2979, Start Num: 74

Candidate Starts for AWGoat_6:

(Start: 74 @2566 has 3 MA's), (114, 2656), (163, 2773), (195, 2869),

Gene: Ading_32 Start: 10352, Stop: 10702, Start Num: 79

Candidate Starts for Ading_32:

(Start: 79 @10352 has 157 MA's), (Start: 101 @10400 has 2 MA's), (122, 10448), (141, 10493), (143, 10499), (160, 10535), (169, 10559), (202, 10670),

Gene: Adlitam_32 Start: 10369, Stop: 10719, Start Num: 79

Candidate Starts for Adlitam_32:

(Start: 79 @10369 has 157 MA's), (Start: 101 @10417 has 2 MA's), (122, 10465), (141, 10510), (143, 10516), (160, 10552), (169, 10576), (202, 10687),

Gene: Amataga_32 Start: 10373, Stop: 10723, Start Num: 79

Candidate Starts for Amataga_32:

(Start: 79 @10373 has 157 MA's), (Start: 101 @10421 has 2 MA's), (122, 10469), (141, 10514), (143, 10520), (160, 10556), (169, 10580), (202, 10691),

Gene: Anglerfish_11 Start: 6625, Stop: 6939, Start Num: 77

Candidate Starts for Anglerfish_11:

(Start: 77 @6625 has 19 MA's), (Start: 97 @6664 has 18 MA's), (106, 6673), (139, 6742), (177, 6817), (198, 6877),

Gene: Annadreamy_67 Start: 53881, Stop: 54282, Start Num: 71

Candidate Starts for Annadreamy_67:

(Start: 71 @53881 has 10 MA's), (Start: 101 @53947 has 2 MA's), (121, 53992), (130, 54019), (134, 54025), (151, 54061), (162, 54088), (165, 54094), (178, 54130), (196, 54181), (199, 54187),

Gene: Anon_48 Start: 31013, Stop: 30756, Start Num: 89

Candidate Starts for Anon_48:

(Start: 89 @31013 has 11 MA's), (173, 30884), (185, 30860),

Gene: Arcadia_72 Start: 44474, Stop: 44782, Start Num: 97

Candidate Starts for Arcadia_72:

(Start: 97 @44474 has 18 MA's), (144, 44576), (161, 44612), (183, 44675), (195, 44705),

Gene: Arcanine_11 Start: 6591, Stop: 6905, Start Num: 77

Candidate Starts for Arcanine_11:

(Start: 77 @6591 has 19 MA's), (Start: 97 @6630 has 18 MA's), (106, 6639), (139, 6708), (177, 6783), (198, 6843),

Gene: ArcherS7_31 Start: 10363, Stop: 10713, Start Num: 79

Candidate Starts for ArcherS7_31:

(Start: 79 @10363 has 157 MA's), (Start: 101 @10411 has 2 MA's), (122, 10459), (141, 10504), (143, 10510), (160, 10546), (169, 10570), (202, 10681),

Gene: Argie_6 Start: 3283, Stop: 3579, Start Num: 92

Candidate Starts for Argie_6:

(Start: 92 @3283 has 39 MA's), (136, 3376), (145, 3391), (185, 3481), (194, 3505), (198, 3517),

Gene: Asterius_30 Start: 10638, Stop: 10988, Start Num: 79

Candidate Starts for Asterius_30:

(Start: 79 @10638 has 157 MA's), (Start: 101 @10686 has 2 MA's), (122, 10734), (141, 10779), (143, 10785), (160, 10821), (169, 10845), (202, 10956),

Gene: Astraea_33 Start: 10543, Stop: 10893, Start Num: 79

Candidate Starts for Astraea_33:

(Start: 79 @10543 has 157 MA's), (Start: 101 @10591 has 2 MA's), (122, 10639), (141, 10684), (143, 10690), (160, 10726), (169, 10750), (202, 10861),

Gene: Atkinbua_11 Start: 6636, Stop: 6950, Start Num: 77
Candidate Starts for Atkinbua_11:
(Start: 77 @6636 has 19 MA's), (Start: 97 @6675 has 18 MA's), (139, 6753), (167, 6798),

Gene: Atlantean_32 Start: 10373, Stop: 10723, Start Num: 79
Candidate Starts for Atlantean_32:
(Start: 79 @10373 has 157 MA's), (Start: 101 @10421 has 2 MA's), (122, 10469), (141, 10514), (143, 10520), (160, 10556), (169, 10580), (202, 10691),

Gene: Attis_55 Start: 39035, Stop: 39415, Start Num: 66
Candidate Starts for Attis_55:
(Start: 66 @39035 has 3 MA's), (83, 39089), (147, 39218), (167, 39254), (175, 39281), (177, 39284), (187, 39314), (194, 39332), (198, 39344), (204, 39401),

Gene: Audrick_34 Start: 10352, Stop: 10702, Start Num: 79
Candidate Starts for Audrick_34:
(Start: 79 @10352 has 157 MA's), (Start: 101 @10400 has 2 MA's), (122, 10448), (141, 10493), (143, 10499), (160, 10535), (169, 10559), (202, 10670),

Gene: Ava3_33 Start: 10918, Stop: 11268, Start Num: 79
Candidate Starts for Ava3_33:
(Start: 79 @10918 has 157 MA's), (Start: 101 @10966 has 2 MA's), (122, 11014), (141, 11059), (143, 11065), (160, 11101), (169, 11125), (202, 11236),

Gene: Babyland_31 Start: 9811, Stop: 10161, Start Num: 79
Candidate Starts for Babyland_31:
(Start: 79 @9811 has 157 MA's), (Start: 101 @9859 has 2 MA's), (122, 9907), (141, 9952), (143, 9958), (160, 9994), (169, 10018), (202, 10129),

Gene: BackyardAgain_29 Start: 9792, Stop: 10142, Start Num: 79
Candidate Starts for BackyardAgain_29:
(Start: 79 @9792 has 157 MA's), (Start: 101 @9840 has 2 MA's), (122, 9888), (141, 9933), (143, 9939), (160, 9975), (169, 9999), (202, 10110),

Gene: BadAgartude_33 Start: 11005, Stop: 11355, Start Num: 79
Candidate Starts for BadAgartude_33:
(Start: 79 @11005 has 157 MA's), (Start: 101 @11053 has 2 MA's), (122, 11101), (141, 11146), (143, 11152), (160, 11188), (169, 11212), (202, 11323),

Gene: BananaFence_33 Start: 10802, Stop: 11152, Start Num: 79
Candidate Starts for BananaFence_33:
(Start: 79 @10802 has 157 MA's), (Start: 101 @10850 has 2 MA's), (122, 10898), (141, 10943), (143, 10949), (160, 10985), (169, 11009), (202, 11120),

Gene: Bangla1971_31 Start: 10369, Stop: 10719, Start Num: 79
Candidate Starts for Bangla1971_31:
(Start: 79 @10369 has 157 MA's), (Start: 101 @10417 has 2 MA's), (122, 10465), (141, 10510), (143, 10516), (160, 10552), (169, 10576), (202, 10687),

Gene: Bantam_53 Start: 43734, Stop: 44000, Start Num: 103
Candidate Starts for Bantam_53:
(Start: 103 @43734 has 2 MA's), (128, 43782), (129, 43785), (172, 43878), (185, 43902),

Gene: Basquiat_31 Start: 9792, Stop: 10142, Start Num: 79

Candidate Starts for Basquiat_31:

(Start: 79 @9792 has 157 MA's), (Start: 101 @9840 has 2 MA's), (122, 9888), (141, 9933), (143, 9939), (160, 9975), (169, 9999), (202, 10110),

Gene: Beagle_10 Start: 3455, Stop: 3862, Start Num: 71

Candidate Starts for Beagle_10:

(Start: 71 @3455 has 10 MA's), (91, 3506), (Start: 97 @3515 has 18 MA's), (131, 3602), (155, 3650), (175, 3716), (181, 3734), (187, 3752),

Gene: BeanWater_28 Start: 10762, Stop: 11112, Start Num: 79

Candidate Starts for BeanWater_28:

(Start: 79 @10762 has 157 MA's), (Start: 101 @10810 has 2 MA's), (122, 10858), (141, 10903), (143, 10909), (160, 10945), (169, 10969), (202, 11080),

Gene: BearBQ_64 Start: 41458, Stop: 41745, Start Num: 92

Candidate Starts for BearBQ_64:

(30, 41194), (37, 41230), (39, 41236), (54, 41332), (Start: 85 @41446 has 1 MA's), (Start: 92 @41458 has 39 MA's), (117, 41503), (156, 41575), (189, 41653), (198, 41677), (204, 41734),

Gene: BeesKnees_11 Start: 6720, Stop: 7034, Start Num: 77

Candidate Starts for BeesKnees_11:

(Start: 77 @6720 has 19 MA's), (Start: 97 @6759 has 18 MA's), (139, 6837), (167, 6882),

Gene: BenitoAntonio_71 Start: 44114, Stop: 44425, Start Num: 97

Candidate Starts for BenitoAntonio_71:

(Start: 97 @44114 has 18 MA's), (125, 44177), (161, 44255), (168, 44276), (179, 44300), (183, 44318), (195, 44348),

Gene: Benllo_73 Start: 44792, Stop: 45103, Start Num: 97

Candidate Starts for Benllo_73:

(Start: 97 @44792 has 18 MA's), (125, 44855), (161, 44933), (168, 44954), (179, 44978), (183, 44996), (195, 45026),

Gene: Beuffert_67 Start: 55006, Stop: 55407, Start Num: 71

Candidate Starts for Beuffert_67:

(Start: 71 @55006 has 10 MA's), (118, 55111), (121, 55117), (130, 55144), (178, 55255), (193, 55300), (199, 55312),

Gene: BigCity_36 Start: 11898, Stop: 12248, Start Num: 79

Candidate Starts for BigCity_36:

(Start: 79 @11898 has 157 MA's), (Start: 101 @11946 has 2 MA's), (122, 11994), (141, 12039), (143, 12045), (160, 12081), (169, 12105), (202, 12216),

Gene: Bigswole_38 Start: 12708, Stop: 13058, Start Num: 79

Candidate Starts for Bigswole_38:

(Start: 79 @12708 has 157 MA's), (Start: 101 @12756 has 2 MA's), (122, 12804), (141, 12849), (143, 12855), (160, 12891), (169, 12915), (202, 13026),

Gene: Bipolarisk_31 Start: 10629, Stop: 10979, Start Num: 79

Candidate Starts for Bipolarisk_31:

(Start: 79 @10629 has 157 MA's), (Start: 101 @10677 has 2 MA's), (122, 10725), (141, 10770), (143, 10776), (160, 10812), (169, 10836), (202, 10947),

Gene: Blackbrain_30 Start: 9608, Stop: 9958, Start Num: 79

Candidate Starts for Blackbrain_30:

(Start: 79 @9608 has 157 MA's), (Start: 101 @9656 has 2 MA's), (122, 9704), (141, 9749), (143, 9755), (160, 9791), (169, 9815), (202, 9926),

Gene: Blexus_93 Start: 53556, Stop: 53837, Start Num: 92

Candidate Starts for Blexus_93:

(16, 53145), (18, 53166), (20, 53187), (22, 53217), (Start: 92 @53556 has 39 MA's), (117, 53601), (124, 53619), (185, 53736),

Gene: Blubba_25 Start: 9089, Stop: 9439, Start Num: 79

Candidate Starts for Blubba_25:

(Start: 79 @9089 has 157 MA's), (Start: 101 @9137 has 2 MA's), (122, 9185), (141, 9230), (143, 9236), (169, 9296), (202, 9407),

Gene: Blueeyedbeauty_69 Start: 54393, Stop: 54800, Start Num: 71

Candidate Starts for Blueeyedbeauty_69:

(Start: 71 @54393 has 10 MA's), (83, 54429), (119, 54507), (134, 54543), (154, 54582), (172, 54633), (184, 54666), (197, 54699), (199, 54705),

Gene: BobaPhett_98 Start: 55238, Stop: 55519, Start Num: 92

Candidate Starts for BobaPhett_98:

(16, 54827), (18, 54848), (20, 54869), (22, 54899), (Start: 92 @55238 has 39 MA's), (117, 55283), (124, 55301), (185, 55418), (198, 55454),

Gene: Bobby_171 Start: 94727, Stop: 95017, Start Num: 77

Candidate Starts for Bobby_171:

(Start: 77 @94727 has 19 MA's), (Start: 85 @94751 has 1 MA's), (Start: 97 @94766 has 18 MA's), (185, 94919), (187, 94925),

Gene: Bonray_32 Start: 10906, Stop: 11256, Start Num: 79

Candidate Starts for Bonray_32:

(Start: 79 @10906 has 157 MA's), (Start: 101 @10954 has 2 MA's), (122, 11002), (141, 11047), (143, 11053), (160, 11089), (169, 11113), (202, 11224),

Gene: Bread_33 Start: 10918, Stop: 11268, Start Num: 79

Candidate Starts for Bread_33:

(Start: 79 @10918 has 157 MA's), (Start: 101 @10966 has 2 MA's), (122, 11014), (141, 11059), (143, 11065), (160, 11101), (169, 11125), (202, 11236),

Gene: Breeniome_32 Start: 9801, Stop: 10151, Start Num: 79

Candidate Starts for Breeniome_32:

(Start: 79 @9801 has 157 MA's), (Start: 101 @9849 has 2 MA's), (122, 9897), (141, 9942), (143, 9948), (160, 9984), (169, 10008), (202, 10119),

Gene: Briton15_12 Start: 6774, Stop: 7046, Start Num: 90

Candidate Starts for Briton15_12:

(Start: 90 @6774 has 2 MA's), (117, 6813), (124, 6831), (171, 6909), (185, 6948),

Gene: Brocalys_88 Start: 50717, Stop: 50998, Start Num: 92

Candidate Starts for Brocalys_88:

(16, 50306), (18, 50327), (20, 50348), (22, 50378), (Start: 92 @50717 has 39 MA's), (117, 50762), (124, 50780), (185, 50897),

Gene: BruhMoment_8 Start: 3480, Stop: 3902, Start Num: 74

Candidate Starts for BruhMoment_8:

(32, 3276), (34, 3288), (49, 3375), (Start: 74 @3480 has 3 MA's), (91, 3522), (117, 3579), (140, 3636), (157, 3669), (177, 3735), (178, 3738), (187, 3768),

Gene: Burrough_32 Start: 10629, Stop: 10979, Start Num: 79

Candidate Starts for Burrough_32:

(Start: 79 @10629 has 157 MA's), (Start: 101 @10677 has 2 MA's), (122, 10725), (141, 10770), (143, 10776), (160, 10812), (169, 10836), (202, 10947),

Gene: Burwell21_90 Start: 53003, Stop: 53284, Start Num: 92

Candidate Starts for Burwell21_90:

(16, 52592), (18, 52613), (20, 52634), (22, 52664), (Start: 92 @53003 has 39 MA's), (117, 53048), (124, 53066), (185, 53183),

Gene: Bxz1_32 Start: 11378, Stop: 11728, Start Num: 79

Candidate Starts for Bxz1_32:

(Start: 79 @11378 has 157 MA's), (Start: 101 @11426 has 2 MA's), (122, 11474), (141, 11519), (143, 11525), (160, 11561), (169, 11585), (202, 11696),

Gene: ByChance_87 Start: 49075, Stop: 49356, Start Num: 92

Candidate Starts for ByChance_87:

(16, 48664), (18, 48685), (20, 48706), (22, 48736), (Start: 92 @49075 has 39 MA's), (117, 49120), (124, 49138), (185, 49255),

Gene: Cabrinians_93 Start: 52638, Stop: 52919, Start Num: 92

Candidate Starts for Cabrinians_93:

(16, 52227), (18, 52248), (20, 52269), (22, 52299), (Start: 92 @52638 has 39 MA's), (117, 52683), (124, 52701), (185, 52818),

Gene: Cactojaque_29 Start: 9497, Stop: 9847, Start Num: 79

Candidate Starts for Cactojaque_29:

(Start: 79 @9497 has 157 MA's), (Start: 101 @9545 has 2 MA's), (122, 9593), (141, 9638), (143, 9644), (160, 9680), (169, 9704), (202, 9815),

Gene: Cali_32 Start: 11939, Stop: 12289, Start Num: 79

Candidate Starts for Cali_32:

(Start: 79 @11939 has 157 MA's), (Start: 101 @11987 has 2 MA's), (122, 12035), (141, 12080), (143, 12086), (160, 12122), (169, 12146), (202, 12257),

Gene: CandC_55 Start: 37729, Stop: 37433, Start Num: 89

Candidate Starts for CandC_55:

(19, 38122), (23, 38068), (31, 37984), (Start: 77 @37759 has 19 MA's), (Start: 86 @37732 has 1 MA's), (Start: 89 @37729 has 11 MA's), (96, 37717), (109, 37693), (117, 37678), (136, 37630), (148, 37621), (170, 37585), (185, 37543), (192, 37522),

Gene: Cantare_94 Start: 71064, Stop: 71369, Start Num: 92

Candidate Starts for Cantare_94:

(Start: 92 @71064 has 39 MA's), (185, 71268), (202, 71337),

Gene: Capablanca_34 Start: 11498, Stop: 11848, Start Num: 79

Candidate Starts for Capablanca_34:

(Start: 79 @11498 has 157 MA's), (Start: 101 @11546 has 2 MA's), (122, 11594), (141, 11639), (143, 11645), (160, 11681), (169, 11705), (202, 11816),

Gene: Caravan_30 Start: 10188, Stop: 10538, Start Num: 79

Candidate Starts for Caravan_30:

(Start: 79 @10188 has 157 MA's), (Start: 101 @10236 has 2 MA's), (122, 10284), (141, 10329), (143, 10335), (160, 10371), (169, 10395), (202, 10506),

Gene: Carcharodon_55 Start: 36177, Stop: 36665, Start Num: 46

Candidate Starts for Carcharodon_55:

(Start: 46 @36177 has 5 MA's), (53, 36213), (Start: 62 @36267 has 4 MA's), (128, 36420), (129, 36423), (142, 36450), (185, 36561), (187, 36567), (204, 36654),

Gene: Cardigan_143 Start: 79014, Stop: 79379, Start Num: 75

Candidate Starts for Cardigan_143:

(Start: 75 @79014 has 3 MA's), (Start: 85 @79044 has 1 MA's), (Start: 97 @79059 has 18 MA's), (100, 79065), (108, 79089), (132, 79149), (183, 79257), (185, 79260), (207, 79365),

Gene: Catera_30 Start: 9796, Stop: 10146, Start Num: 79

Candidate Starts for Catera_30:

(Start: 79 @9796 has 157 MA's), (Start: 101 @9844 has 2 MA's), (122, 9892), (141, 9937), (143, 9943), (160, 9979), (169, 10003), (202, 10114),

Gene: Chargie21_31 Start: 9792, Stop: 10142, Start Num: 79

Candidate Starts for Chargie21_31:

(Start: 79 @9792 has 157 MA's), (Start: 101 @9840 has 2 MA's), (122, 9888), (141, 9933), (143, 9939), (160, 9975), (169, 9999), (202, 10110),

Gene: CharlieB_32 Start: 9937, Stop: 10287, Start Num: 79

Candidate Starts for CharlieB_32:

(Start: 79 @9937 has 157 MA's), (Start: 101 @9985 has 2 MA's), (122, 10033), (141, 10078), (143, 10084), (160, 10120), (169, 10144), (202, 10255),

Gene: ChaylaJr_31 Start: 9879, Stop: 10229, Start Num: 79

Candidate Starts for ChaylaJr_31:

(Start: 79 @9879 has 157 MA's), (Start: 101 @9927 has 2 MA's), (122, 9975), (141, 10020), (143, 10026), (160, 10062), (169, 10086), (202, 10197),

Gene: Cheesy_73 Start: 44267, Stop: 44575, Start Num: 97

Candidate Starts for Cheesy_73:

(Start: 97 @44267 has 18 MA's), (144, 44369), (161, 44405), (183, 44468), (195, 44498),

Gene: ChickenPhender_31 Start: 9837, Stop: 10187, Start Num: 79

Candidate Starts for ChickenPhender_31:

(Start: 79 @9837 has 157 MA's), (Start: 101 @9885 has 2 MA's), (122, 9933), (141, 9978), (143, 9984), (160, 10020), (169, 10044), (202, 10155),

Gene: Chomp_30 Start: 10373, Stop: 10723, Start Num: 79

Candidate Starts for Chomp_30:

(Start: 79 @10373 has 157 MA's), (Start: 101 @10421 has 2 MA's), (122, 10469), (141, 10514), (143, 10520), (160, 10556), (169, 10580), (202, 10691),

Gene: CindyLou_32 Start: 10373, Stop: 10723, Start Num: 79

Candidate Starts for CindyLou_32:

(Start: 79 @10373 has 157 MA's), (Start: 101 @10421 has 2 MA's), (122, 10469), (141, 10514), (143, 10520), (160, 10556), (169, 10580), (202, 10691),

Gene: Circum_74 Start: 44882, Stop: 45193, Start Num: 97

Candidate Starts for Circum_74:

(Start: 97 @44882 has 18 MA's), (125, 44945), (161, 45023), (168, 45044), (179, 45068), (183, 45086), (195, 45116),

Gene: Clifton_88 Start: 51692, Stop: 51973, Start Num: 92

Candidate Starts for Clifton_88:

(16, 51281), (18, 51302), (20, 51323), (22, 51353), (Start: 92 @51692 has 39 MA's), (117, 51737), (124, 51755), (185, 51872),

Gene: Clown_82 Start: 53661, Stop: 54005, Start Num: 92

Candidate Starts for Clown_82:

(Start: 92 @53661 has 39 MA's), (117, 53709), (156, 53778), (178, 53832), (180, 53841), (210, 53973), (211, 53982),

Gene: Concombres_31 Start: 11144, Stop: 11494, Start Num: 79

Candidate Starts for Concombres_31:

(Start: 79 @11144 has 157 MA's), (Start: 101 @11192 has 2 MA's), (122, 11240), (141, 11285), (143, 11291), (160, 11327), (169, 11351), (202, 11462),

Gene: Constance_64 Start: 41355, Stop: 41633, Start Num: 89

Candidate Starts for Constance_64:

(1, 39963), (2, 39996), (3, 40005), (4, 40026), (5, 40035), (6, 40104), (7, 40203), (8, 40368), (9, 40506), (10, 40698), (11, 40722), (14, 40857), (17, 40944), (36, 41130), (42, 41163), (57, 41259), (Start: 89 @41355 has 11 MA's), (183, 41529), (185, 41532), (198, 41568), (203, 41622),

Gene: Correa_71 Start: 43841, Stop: 44149, Start Num: 97

Candidate Starts for Correa_71:

(Start: 97 @43841 has 18 MA's), (144, 43943), (161, 43979), (183, 44042), (195, 44072),

Gene: Crocheter_2 Start: 479, Stop: 808, Start Num: 73

Candidate Starts for Crocheter_2:

(Start: 73 @479 has 3 MA's), (105, 545), (175, 686), (185, 713), (190, 725),

Gene: Crumble_90 Start: 49362, Stop: 49643, Start Num: 92

Candidate Starts for Crumble_90:

(16, 48951), (18, 48972), (20, 48993), (22, 49023), (Start: 92 @49362 has 39 MA's), (117, 49407), (124, 49425), (185, 49542),

Gene: DTDevon_33 Start: 11537, Stop: 11887, Start Num: 79

Candidate Starts for DTDevon_33:

(Start: 79 @11537 has 157 MA's), (Start: 101 @11585 has 2 MA's), (122, 11633), (141, 11678), (143, 11684), (160, 11720), (169, 11744), (202, 11855),

Gene: Daffodil_34 Start: 10918, Stop: 11268, Start Num: 79

Candidate Starts for Daffodil_34:

(Start: 79 @10918 has 157 MA's), (Start: 101 @10966 has 2 MA's), (122, 11014), (141, 11059), (143, 11065), (160, 11101), (169, 11125), (202, 11236),

Gene: Dandelion_36 Start: 12233, Stop: 12583, Start Num: 79

Candidate Starts for Dandelion_36:

(Start: 79 @12233 has 157 MA's), (Start: 101 @12281 has 2 MA's), (122, 12329), (141, 12374), (143, 12380), (160, 12416), (169, 12440), (202, 12551),

Gene: Darko_31 Start: 10771, Stop: 11121, Start Num: 79

Candidate Starts for Darko_31:

(Start: 79 @10771 has 157 MA's), (Start: 101 @10819 has 2 MA's), (122, 10867), (141, 10912), (143, 10918), (160, 10954), (169, 10978), (202, 11089),

Gene: DatBoi_51 Start: 43635, Stop: 43889, Start Num: 89

Candidate Starts for DatBoi_51:

(Start: 89 @43635 has 11 MA's), (112, 43674), (185, 43791),

Gene: Delilah_32 Start: 10918, Stop: 11268, Start Num: 79

Candidate Starts for Delilah_32:

(Start: 79 @10918 has 157 MA's), (Start: 101 @10966 has 2 MA's), (122, 11014), (141, 11059), (143, 11065), (160, 11101), (169, 11125), (202, 11236),

Gene: Derek_33 Start: 10330, Stop: 10680, Start Num: 79

Candidate Starts for Derek_33:

(Start: 79 @10330 has 157 MA's), (Start: 101 @10378 has 2 MA's), (122, 10426), (141, 10471), (143, 10477), (160, 10513), (169, 10537), (202, 10648),

Gene: Dewdrop_50 Start: 22009, Stop: 22341, Start Num: 76

Candidate Starts for Dewdrop_50:

(Start: 76 @22009 has 2 MA's), (Start: 97 @22054 has 18 MA's), (Start: 101 @22063 has 2 MA's), (114, 22093), (126, 22114), (135, 22123), (158, 22168), (202, 22306),

Gene: Dietrick_27 Start: 9565, Stop: 9915, Start Num: 79

Candidate Starts for Dietrick_27:

(Start: 79 @9565 has 157 MA's), (Start: 101 @9613 has 2 MA's), (122, 9661), (141, 9706), (143, 9712), (169, 9772), (202, 9883),

Gene: DirtMonster_31 Start: 11456, Stop: 11806, Start Num: 79

Candidate Starts for DirtMonster_31:

(Start: 79 @11456 has 157 MA's), (Start: 101 @11504 has 2 MA's), (122, 11552), (141, 11597), (143, 11603), (169, 11663), (202, 11774),

Gene: Dori_58 Start: 47703, Stop: 48095, Start Num: 67

Candidate Starts for Dori_58:

(56, 47673), (Start: 67 @47703 has 2 MA's), (82, 47751), (128, 47850), (129, 47853), (142, 47880), (185, 47991), (187, 47997),

Gene: DrPhinkDaddy_32 Start: 10915, Stop: 11265, Start Num: 79

Candidate Starts for DrPhinkDaddy_32:

(Start: 79 @10915 has 157 MA's), (Start: 101 @10963 has 2 MA's), (122, 11011), (141, 11056), (143, 11062), (160, 11098), (169, 11122), (202, 11233),

Gene: Drazdys_32 Start: 10703, Stop: 11053, Start Num: 79

Candidate Starts for Drazdys_32:

(Start: 79 @10703 has 157 MA's), (Start: 101 @10751 has 2 MA's), (122, 10799), (141, 10844), (143, 10850), (160, 10886), (169, 10910), (202, 11021),

Gene: DreamCatcher_12 Start: 7365, Stop: 7679, Start Num: 77

Candidate Starts for DreamCatcher_12:

(Start: 77 @7365 has 19 MA's), (Start: 97 @7404 has 18 MA's), (106, 7413), (139, 7482), (177, 7557), (198, 7617),

Gene: Dynamite_72 Start: 44325, Stop: 44636, Start Num: 97

Candidate Starts for Dynamite_72:

(Start: 97 @44325 has 18 MA's), (125, 44388), (161, 44466), (168, 44487), (179, 44511), (183, 44529), (195, 44559),

Gene: Dynamix_11 Start: 6722, Stop: 7036, Start Num: 77

Candidate Starts for Dynamix_11:

(Start: 77 @6722 has 19 MA's), (Start: 97 @6761 has 18 MA's), (106, 6770), (139, 6839), (177, 6914), (198, 6974),

Gene: ET08_27 Start: 10374, Stop: 10724, Start Num: 79

Candidate Starts for ET08_27:

(Start: 79 @10374 has 157 MA's), (Start: 101 @10422 has 2 MA's), (122, 10470), (141, 10515), (143, 10521), (160, 10557), (169, 10581), (202, 10692),

Gene: EasyJones_31 Start: 9542, Stop: 9892, Start Num: 79

Candidate Starts for EasyJones_31:

(Start: 79 @9542 has 157 MA's), (Start: 101 @9590 has 2 MA's), (122, 9638), (141, 9683), (143, 9689), (160, 9725), (169, 9749), (202, 9860),

Gene: EggyFarm_36 Start: 11898, Stop: 12248, Start Num: 79

Candidate Starts for EggyFarm_36:

(Start: 79 @11898 has 157 MA's), (Start: 101 @11946 has 2 MA's), (122, 11994), (141, 12039), (143, 12045), (160, 12081), (169, 12105), (202, 12216),

Gene: Elsa_72 Start: 44474, Stop: 44782, Start Num: 97

Candidate Starts for Elsa_72:

(Start: 97 @44474 has 18 MA's), (144, 44576), (161, 44612), (183, 44675), (195, 44705),

Gene: Elver_131 Start: 70843, Stop: 71208, Start Num: 101

Candidate Starts for Elver_131:

(70, 70765), (Start: 101 @70843 has 2 MA's), (146, 70954), (176, 71029), (194, 71080),

Gene: Elver_123 Start: 67517, Stop: 67825, Start Num: 116

Candidate Starts for Elver_123:

(Start: 116 @67517 has 2 MA's), (133, 67562), (152, 67601), (187, 67697),

Gene: EmToTheThree_35 Start: 12332, Stop: 12682, Start Num: 79

Candidate Starts for EmToTheThree_35:

(Start: 79 @12332 has 157 MA's), (Start: 101 @12380 has 2 MA's), (122, 12428), (141, 12473), (143, 12479), (160, 12515), (169, 12539), (202, 12650),

Gene: EmmaElysia_30 Start: 9557, Stop: 9907, Start Num: 79

Candidate Starts for EmmaElysia_30:

(Start: 79 @9557 has 157 MA's), (Start: 101 @9605 has 2 MA's), (122, 9653), (141, 9698), (143, 9704), (160, 9740), (169, 9764), (202, 9875),

Gene: Erdmann_33 Start: 10918, Stop: 11268, Start Num: 79

Candidate Starts for Erdmann_33:

(Start: 79 @10918 has 157 MA's), (Start: 101 @10966 has 2 MA's), (122, 11014), (141, 11059), (143, 11065), (160, 11101), (169, 11125), (202, 11236),

Gene: ErnieJ_33 Start: 10738, Stop: 11088, Start Num: 79

Candidate Starts for ErnieJ_33:

(Start: 79 @10738 has 157 MA's), (Start: 101 @10786 has 2 MA's), (122, 10834), (141, 10879), (143, 10885), (160, 10921), (169, 10945), (202, 11056),

Gene: Essence_31 Start: 10092, Stop: 10442, Start Num: 79

Candidate Starts for Essence_31:

(Start: 79 @10092 has 157 MA's), (Start: 101 @10140 has 2 MA's), (122, 10188), (141, 10233), (143, 10239), (160, 10275), (169, 10299), (202, 10410),

Gene: Ewok_32 Start: 10921, Stop: 11271, Start Num: 79

Candidate Starts for Ewok_32:

(Start: 79 @10921 has 157 MA's), (Start: 101 @10969 has 2 MA's), (122, 11017), (141, 11062), (143, 11068), (160, 11104), (169, 11128), (202, 11239),

Gene: Faust_71 Start: 56000, Stop: 56389, Start Num: 71

Candidate Starts for Faust_71:

(Start: 71 @56000 has 10 MA's), (111, 56087), (115, 56096), (148, 56168), (151, 56174), (205, 56351), (206, 56360),

Gene: Fenn_11 Start: 6952, Stop: 7266, Start Num: 77

Candidate Starts for Fenn_11:

(Start: 77 @6952 has 19 MA's), (Start: 97 @6991 has 18 MA's), (139, 7069), (167, 7114),

Gene: Fludd_31 Start: 9793, Stop: 10143, Start Num: 79

Candidate Starts for Fludd_31:

(Start: 79 @9793 has 157 MA's), (Start: 101 @9841 has 2 MA's), (122, 9889), (141, 9934), (143, 9940), (160, 9976), (169, 10000), (202, 10111),

Gene: FoxtrotP1_32 Start: 11246, Stop: 11596, Start Num: 79

Candidate Starts for FoxtrotP1_32:

(Start: 79 @11246 has 157 MA's), (Start: 101 @11294 has 2 MA's), (122, 11342), (141, 11387), (143, 11393), (160, 11429), (169, 11453), (202, 11564),

Gene: Fransoyer_60 Start: 45317, Stop: 45054, Start Num: 98

Candidate Starts for Fransoyer_60:

(Start: 98 @45317 has 2 MA's), (113, 45290), (123, 45269), (185, 45158), (198, 45122), (204, 45065),

Gene: FrayBell_38 Start: 12486, Stop: 12836, Start Num: 79

Candidate Starts for FrayBell_38:

(Start: 79 @12486 has 157 MA's), (Start: 101 @12534 has 2 MA's), (122, 12582), (141, 12627), (143, 12633), (169, 12693), (202, 12804),

Gene: FreddyB_106 Start: 54284, Stop: 54565, Start Num: 92

Candidate Starts for FreddyB_106:

(16, 53873), (18, 53894), (20, 53915), (22, 53945), (Start: 92 @54284 has 39 MA's), (117, 54329), (124, 54347), (185, 54464),

Gene: FudgeTart_33 Start: 10918, Stop: 11268, Start Num: 79

Candidate Starts for FudgeTart_33:

(Start: 79 @10918 has 157 MA's), (Start: 101 @10966 has 2 MA's), (122, 11014), (141, 11059), (143, 11065), (160, 11101), (169, 11125), (202, 11236),

Gene: G4_46 Start: 30222, Stop: 30545, Start Num: 75

Candidate Starts for G4_46:

(61, 30180), (Start: 75 @30222 has 3 MA's), (Start: 77 @30228 has 19 MA's), (100, 30276), (120, 30312), (167, 30378), (177, 30408), (185, 30432),

Gene: GMA2_84 Start: 80351, Stop: 80010, Start Num: 73

Candidate Starts for GMA2_84:

(Start: 73 @80351 has 3 MA's), (Start: 77 @80342 has 19 MA's), (175, 80141), (177, 80138), (204, 80021),

Gene: GMA4_42 Start: 31658, Stop: 32065, Start Num: 64

Candidate Starts for GMA4_42:

(47, 31565), (64, 31658), (82, 31715), (128, 31823), (142, 31853), (153, 31877), (164, 31901), (174, 31934), (202, 32033),

Gene: Gabriel_32 Start: 9792, Stop: 10142, Start Num: 79

Candidate Starts for Gabriel_32:

(Start: 79 @9792 has 157 MA's), (Start: 101 @9840 has 2 MA's), (122, 9888), (141, 9933), (143, 9939), (160, 9975), (169, 9999), (202, 10110),

Gene: Gamgam_32 Start: 10373, Stop: 10723, Start Num: 79

Candidate Starts for Gamgam_32:

(Start: 79 @10373 has 157 MA's), (Start: 101 @10421 has 2 MA's), (122, 10469), (141, 10514), (143, 10520), (160, 10556), (169, 10580), (202, 10691),

Gene: Gex_56 Start: 36283, Stop: 36681, Start Num: 62

Candidate Starts for Gex_56:

(Start: 46 @36193 has 5 MA's), (53, 36229), (Start: 62 @36283 has 4 MA's), (128, 36436), (129, 36439), (142, 36466), (185, 36577), (187, 36583), (204, 36670),

Gene: Ghost_32 Start: 10373, Stop: 10723, Start Num: 79

Candidate Starts for Ghost_32:

(Start: 79 @10373 has 157 MA's), (Start: 101 @10421 has 2 MA's), (122, 10469), (141, 10514), (143, 10520), (160, 10556), (169, 10580), (202, 10691),

Gene: Gizmo_34 Start: 10920, Stop: 11270, Start Num: 79

Candidate Starts for Gizmo_34:

(Start: 79 @10920 has 157 MA's), (Start: 101 @10968 has 2 MA's), (122, 11016), (141, 11061), (143, 11067), (160, 11103), (169, 11127), (202, 11238),

Gene: GoCrazy_69 Start: 43769, Stop: 44080, Start Num: 97

Candidate Starts for GoCrazy_69:

(Start: 97 @43769 has 18 MA's), (125, 43832), (161, 43910), (168, 43931), (179, 43955), (183, 43973), (195, 44003),

Gene: GodPhather_6 Start: 3283, Stop: 3579, Start Num: 92
Candidate Starts for GodPhather_6:
(Start: 92 @3283 has 39 MA's), (136, 3376), (145, 3391), (185, 3481), (194, 3505), (198, 3517),

Gene: Gorge_95 Start: 53911, Stop: 54192, Start Num: 92
Candidate Starts for Gorge_95:
(16, 53500), (18, 53521), (20, 53542), (22, 53572), (Start: 92 @53911 has 39 MA's), (117, 53956),
(124, 53974), (185, 54091),

Gene: Grasshills_36 Start: 11898, Stop: 12248, Start Num: 79
Candidate Starts for Grasshills_36:
(Start: 79 @11898 has 157 MA's), (Start: 101 @11946 has 2 MA's), (122, 11994), (141, 12039), (143,
12045), (160, 12081), (169, 12105), (202, 12216),

Gene: Greely_244 Start: 137695, Stop: 138051, Start Num: 94
Candidate Starts for Greely_244:
(25, 137374), (38, 137473), (43, 137515), (Start: 94 @137695 has 3 MA's), (117, 137746), (150,
137821), (152, 137824), (168, 137854), (170, 137863), (185, 137905), (187, 137911), (191, 137920),
(194, 137929),

Gene: Grungle_25 Start: 8489, Stop: 8839, Start Num: 79
Candidate Starts for Grungle_25:
(Start: 79 @8489 has 157 MA's), (Start: 101 @8537 has 2 MA's), (122, 8585), (141, 8630), (143,
8636), (160, 8672), (169, 8696), (202, 8807),

Gene: Guwapp_32 Start: 10330, Stop: 10680, Start Num: 79
Candidate Starts for Guwapp_32:
(Start: 79 @10330 has 157 MA's), (Start: 101 @10378 has 2 MA's), (122, 10426), (141, 10471), (143,
10477), (160, 10513), (169, 10537), (202, 10648),

Gene: Hankly_72 Start: 43963, Stop: 44274, Start Num: 97
Candidate Starts for Hankly_72:
(Start: 97 @43963 has 18 MA's), (125, 44026), (161, 44104), (168, 44125), (179, 44149), (183,
44167), (195, 44197),

Gene: Heisenberger_71 Start: 43731, Stop: 44042, Start Num: 97
Candidate Starts for Heisenberger_71:
(Start: 97 @43731 has 18 MA's), (125, 43794), (161, 43872), (168, 43893), (179, 43917), (183,
43935), (195, 43965),

Gene: Hortihabitatio_2 Start: 447, Stop: 776, Start Num: 73
Candidate Starts for Hortihabitatio_2:
(49, 342), (63, 414), (Start: 73 @447 has 3 MA's), (105, 513), (175, 654), (183, 678), (185, 681), (190,
693),

Gene: HyRo_31 Start: 11105, Stop: 11455, Start Num: 79
Candidate Starts for HyRo_31:
(Start: 79 @11105 has 157 MA's), (Start: 101 @11153 has 2 MA's), (122, 11201), (141, 11246), (143,
11252), (160, 11288), (169, 11312), (202, 11423),

Gene: I3_34 Start: 11467, Stop: 11817, Start Num: 79
Candidate Starts for I3_34:

(Start: 79 @11467 has 157 MA's), (Start: 101 @11515 has 2 MA's), (122, 11563), (141, 11608), (143, 11614), (169, 11674), (202, 11785),

Gene: Ichabod_11 Start: 6739, Stop: 7011, Start Num: 90

Candidate Starts for Ichabod_11:

(Start: 90 @6739 has 2 MA's), (117, 6778), (124, 6796), (171, 6874), (185, 6913),

Gene: IkeLoa_28 Start: 10216, Stop: 10566, Start Num: 79

Candidate Starts for IkeLoa_28:

(Start: 79 @10216 has 157 MA's), (Start: 101 @10264 has 2 MA's), (122, 10312), (141, 10357), (143, 10363), (160, 10399), (169, 10423), (202, 10534),

Gene: InigoMontoya_33 Start: 10334, Stop: 10684, Start Num: 79

Candidate Starts for InigoMontoya_33:

(Start: 79 @10334 has 157 MA's), (Start: 101 @10382 has 2 MA's), (122, 10430), (141, 10475), (143, 10481), (160, 10517), (169, 10541), (202, 10652),

Gene: InterFolia_39 Start: 13024, Stop: 13374, Start Num: 79

Candidate Starts for InterFolia_39:

(Start: 79 @13024 has 157 MA's), (Start: 101 @13072 has 2 MA's), (122, 13120), (141, 13165), (143, 13171), (160, 13207), (169, 13231), (202, 13342),

Gene: Iota_29 Start: 10453, Stop: 10803, Start Num: 79

Candidate Starts for Iota_29:

(Start: 79 @10453 has 157 MA's), (Start: 101 @10501 has 2 MA's), (122, 10549), (141, 10594), (143, 10600), (160, 10636), (169, 10660), (202, 10771),

Gene: Issimir_31 Start: 10913, Stop: 11263, Start Num: 79

Candidate Starts for Issimir_31:

(Start: 79 @10913 has 157 MA's), (Start: 101 @10961 has 2 MA's), (122, 11009), (141, 11054), (143, 11060), (160, 11096), (169, 11120), (202, 11231),

Gene: Izajani_33 Start: 10918, Stop: 11268, Start Num: 79

Candidate Starts for Izajani_33:

(Start: 79 @10918 has 157 MA's), (Start: 101 @10966 has 2 MA's), (122, 11014), (141, 11059), (143, 11065), (160, 11101), (169, 11125), (202, 11236),

Gene: JEGGS_71 Start: 43810, Stop: 44121, Start Num: 97

Candidate Starts for JEGGS_71:

(Start: 97 @43810 has 18 MA's), (125, 43873), (161, 43951), (168, 43972), (179, 43996), (183, 44014), (195, 44044),

Gene: JPickles_30 Start: 9567, Stop: 9917, Start Num: 79

Candidate Starts for JPickles_30:

(Start: 79 @9567 has 157 MA's), (Start: 101 @9615 has 2 MA's), (122, 9663), (141, 9708), (143, 9714), (160, 9750), (169, 9774), (202, 9885),

Gene: James_100 Start: 55293, Stop: 55574, Start Num: 92

Candidate Starts for James_100:

(16, 54882), (18, 54903), (20, 54924), (22, 54954), (Start: 92 @55293 has 39 MA's), (117, 55338), (124, 55356), (185, 55473),

Gene: Janiyra_32 Start: 10352, Stop: 10702, Start Num: 79

Candidate Starts for Janiyra_32:

(Start: 79 @10352 has 157 MA's), (Start: 101 @10400 has 2 MA's), (122, 10448), (141, 10493), (143, 10499), (160, 10535), (169, 10559), (202, 10670),

Gene: Jarcob_99 Start: 54892, Stop: 55173, Start Num: 92

Candidate Starts for Jarcob_99:

(16, 54481), (18, 54502), (20, 54523), (22, 54553), (Start: 92 @54892 has 39 MA's), (117, 54937), (124, 54955), (185, 55072),

Gene: JayJay_33 Start: 10883, Stop: 11233, Start Num: 79

Candidate Starts for JayJay_33:

(Start: 79 @10883 has 157 MA's), (Start: 101 @10931 has 2 MA's), (122, 10979), (141, 11024), (143, 11030), (160, 11066), (169, 11090), (202, 11201),

Gene: Jaygup_32 Start: 10369, Stop: 10719, Start Num: 79

Candidate Starts for Jaygup_32:

(Start: 79 @10369 has 157 MA's), (Start: 101 @10417 has 2 MA's), (122, 10465), (141, 10510), (143, 10516), (160, 10552), (169, 10576), (202, 10687),

Gene: JeanGrey_20 Start: 10459, Stop: 10809, Start Num: 68

Candidate Starts for JeanGrey_20:

(68, 10459),

Gene: Jedediah_32 Start: 9838, Stop: 10188, Start Num: 79

Candidate Starts for Jedediah_32:

(Start: 79 @9838 has 157 MA's), (Start: 101 @9886 has 2 MA's), (122, 9934), (141, 9979), (143, 9985), (160, 10021), (169, 10045), (202, 10156),

Gene: Jemmno_32 Start: 10373, Stop: 10723, Start Num: 79

Candidate Starts for Jemmno_32:

(Start: 79 @10373 has 157 MA's), (Start: 101 @10421 has 2 MA's), (122, 10469), (141, 10514), (143, 10520), (160, 10556), (169, 10580), (202, 10691),

Gene: Jessibeth14_31 Start: 10638, Stop: 10988, Start Num: 79

Candidate Starts for Jessibeth14_31:

(Start: 79 @10638 has 157 MA's), (Start: 101 @10686 has 2 MA's), (122, 10734), (141, 10779), (143, 10785), (160, 10821), (169, 10845), (202, 10956),

Gene: JonJames_139 Start: 79256, Stop: 79624, Start Num: 75

Candidate Starts for JonJames_139:

(Start: 75 @79256 has 3 MA's), (Start: 85 @79286 has 1 MA's), (Start: 97 @79301 has 18 MA's), (100, 79307), (108, 79331), (129, 79382), (183, 79502), (185, 79505), (194, 79529), (207, 79610),

Gene: JulietS_27 Start: 8792, Stop: 9142, Start Num: 79

Candidate Starts for JulietS_27:

(Start: 79 @8792 has 157 MA's), (Start: 101 @8840 has 2 MA's), (122, 8888), (141, 8933), (143, 8939), (160, 8975), (169, 8999), (202, 9110),

Gene: JustHall_31 Start: 10818, Stop: 11168, Start Num: 79

Candidate Starts for JustHall_31:

(Start: 79 @10818 has 157 MA's), (Start: 101 @10866 has 2 MA's), (122, 10914), (141, 10959), (143, 10965), (160, 11001), (169, 11025), (202, 11136),

Gene: KSSJEB_10 Start: 6483, Stop: 6797, Start Num: 77

Candidate Starts for KSSJEB_10:

(Start: 69 @6456 has 1 MA's), (Start: 77 @6483 has 19 MA's), (Start: 97 @6522 has 18 MA's), (106, 6531), (139, 6600), (177, 6675), (198, 6735),

Gene: Kamryn_32 Start: 10691, Stop: 11041, Start Num: 79

Candidate Starts for Kamryn_32:

(Start: 79 @10691 has 157 MA's), (Start: 101 @10739 has 2 MA's), (122, 10787), (141, 10832), (143, 10838), (160, 10874), (169, 10898), (202, 11009),

Gene: Kardesai_72 Start: 44083, Stop: 44394, Start Num: 97

Candidate Starts for Kardesai_72:

(Start: 97 @44083 has 18 MA's), (125, 44146), (161, 44224), (168, 44245), (179, 44269), (183, 44287), (195, 44317),

Gene: Kboogie_32 Start: 9848, Stop: 10198, Start Num: 79

Candidate Starts for Kboogie_32:

(Start: 79 @9848 has 157 MA's), (Start: 101 @9896 has 2 MA's), (122, 9944), (141, 9989), (143, 9995), (160, 10031), (169, 10055), (202, 10166),

Gene: KeaneyLin_68 Start: 43769, Stop: 44080, Start Num: 97

Candidate Starts for KeaneyLin_68:

(Start: 97 @43769 has 18 MA's), (125, 43832), (161, 43910), (168, 43931), (179, 43955), (183, 43973), (195, 44003),

Gene: Kelcole_54 Start: 37921, Stop: 37628, Start Num: 89

Candidate Starts for Kelcole_54:

(Start: 77 @37951 has 19 MA's), (Start: 86 @37924 has 1 MA's), (Start: 89 @37921 has 11 MA's), (96, 37909), (117, 37870), (118, 37867), (130, 37834), (136, 37822), (148, 37813), (185, 37735), (192, 37714), (198, 37699),

Gene: Khaleesi_31 Start: 10665, Stop: 11015, Start Num: 79

Candidate Starts for Khaleesi_31:

(Start: 79 @10665 has 157 MA's), (Start: 101 @10713 has 2 MA's), (122, 10761), (141, 10806), (143, 10812), (160, 10848), (169, 10872), (202, 10983),

Gene: Koella_89 Start: 50055, Stop: 50336, Start Num: 92

Candidate Starts for Koella_89:

(16, 49644), (18, 49665), (20, 49686), (22, 49716), (Start: 92 @50055 has 39 MA's), (117, 50100), (124, 50118), (185, 50235),

Gene: Koguma_28 Start: 9135, Stop: 9485, Start Num: 79

Candidate Starts for Koguma_28:

(Start: 79 @9135 has 157 MA's), (Start: 101 @9183 has 2 MA's), (122, 9231), (141, 9276), (143, 9282), (160, 9318), (169, 9342), (202, 9453),

Gene: Kudrefre_118 Start: 64805, Stop: 65071, Start Num: 110

Candidate Starts for Kudrefre_118:

(65, 64688), (Start: 110 @64805 has 4 MA's), (188, 64979), (203, 65060),

Gene: LRRHood_29 Start: 11058, Stop: 11408, Start Num: 79

Candidate Starts for LRRHood_29:

(Start: 79 @11058 has 157 MA's), (Start: 101 @11106 has 2 MA's), (122, 11154), (141, 11199), (143, 11205), (160, 11241), (169, 11265), (202, 11376),

Gene: Lambo_93 Start: 64770, Stop: 65072, Start Num: 89

Candidate Starts for Lambo_93:

(Start: 78 @64743 has 2 MA's), (81, 64752), (84, 64761), (Start: 89 @64770 has 11 MA's), (117, 64818), (185, 64971), (194, 64995),

Gene: LastJedi_87 Start: 51112, Stop: 51393, Start Num: 92

Candidate Starts for LastJedi_87:

(16, 50701), (18, 50722), (20, 50743), (22, 50773), (Start: 92 @51112 has 39 MA's), (117, 51157), (124, 51175), (185, 51292),

Gene: Latch_32 Start: 10373, Stop: 10723, Start Num: 79

Candidate Starts for Latch_32:

(Start: 79 @10373 has 157 MA's), (Start: 101 @10421 has 2 MA's), (122, 10469), (141, 10514), (143, 10520), (160, 10556), (169, 10580), (202, 10691),

Gene: Latretium_99 Start: 54158, Stop: 54439, Start Num: 92

Candidate Starts for Latretium_99:

(16, 53747), (18, 53768), (20, 53789), (22, 53819), (Start: 92 @54158 has 39 MA's), (117, 54203), (124, 54221), (185, 54338),

Gene: Leaf_50 Start: 22009, Stop: 22341, Start Num: 76

Candidate Starts for Leaf_50:

(Start: 76 @22009 has 2 MA's), (Start: 97 @22054 has 18 MA's), (Start: 101 @22063 has 2 MA's), (114, 22093), (126, 22114), (135, 22123), (158, 22168), (202, 22306),

Gene: Lee7_31 Start: 10915, Stop: 11265, Start Num: 79

Candidate Starts for Lee7_31:

(Start: 79 @10915 has 157 MA's), (Start: 101 @10963 has 2 MA's), (122, 11011), (141, 11056), (143, 11062), (160, 11098), (169, 11122), (202, 11233),

Gene: LifeSavor_33 Start: 10369, Stop: 10719, Start Num: 79

Candidate Starts for LifeSavor_33:

(Start: 79 @10369 has 157 MA's), (Start: 101 @10417 has 2 MA's), (122, 10465), (141, 10510), (143, 10516), (160, 10552), (169, 10576), (202, 10687),

Gene: LilMoolah_99 Start: 54092, Stop: 54373, Start Num: 92

Candidate Starts for LilMoolah_99:

(16, 53681), (18, 53702), (20, 53723), (22, 53753), (Start: 92 @54092 has 39 MA's), (117, 54137), (124, 54155), (185, 54272),

Gene: Limpid_66 Start: 53880, Stop: 54281, Start Num: 71

Candidate Starts for Limpid_66:

(Start: 71 @53880 has 10 MA's), (Start: 101 @53946 has 2 MA's), (121, 53991), (130, 54018), (134, 54024), (151, 54060), (162, 54087), (165, 54093), (178, 54129), (196, 54180), (199, 54186),

Gene: Littleton_32 Start: 10373, Stop: 10723, Start Num: 79

Candidate Starts for Littleton_32:

(Start: 79 @10373 has 157 MA's), (Start: 101 @10421 has 2 MA's), (122, 10469), (141, 10514), (143, 10520), (160, 10556), (169, 10580), (202, 10691),

Gene: Lizziana_97 Start: 54360, Stop: 54641, Start Num: 92
Candidate Starts for Lizziana_97:
(16, 53949), (18, 53970), (20, 53991), (22, 54021), (Start: 92 @54360 has 39 MA's), (117, 54405),
(124, 54423), (185, 54540),

Gene: Loanshark_32 Start: 10918, Stop: 11268, Start Num: 79
Candidate Starts for Loanshark_32:
(Start: 79 @10918 has 157 MA's), (Start: 101 @10966 has 2 MA's), (122, 11014), (141, 11059), (143,
11065), (160, 11101), (169, 11125), (202, 11236),

Gene: LolaVinca_35 Start: 12130, Stop: 12480, Start Num: 79
Candidate Starts for LolaVinca_35:
(Start: 79 @12130 has 157 MA's), (Start: 101 @12178 has 2 MA's), (122, 12226), (141, 12271), (143,
12277), (160, 12313), (169, 12337), (202, 12448),

Gene: LordFarquaad_57 Start: 39016, Stop: 39396, Start Num: 66
Candidate Starts for LordFarquaad_57:
(Start: 66 @39016 has 3 MA's), (83, 39070), (147, 39199), (167, 39235), (175, 39262), (177, 39265),
(187, 39295), (194, 39313), (198, 39325), (204, 39382),

Gene: LordLeafolot_37 Start: 12485, Stop: 12835, Start Num: 79
Candidate Starts for LordLeafolot_37:
(Start: 79 @12485 has 157 MA's), (Start: 101 @12533 has 2 MA's), (122, 12581), (141, 12626), (143,
12632), (169, 12692), (202, 12803),

Gene: Lukilu_25 Start: 9509, Stop: 9859, Start Num: 79
Candidate Starts for Lukilu_25:
(Start: 79 @9509 has 157 MA's), (Start: 101 @9557 has 2 MA's), (122, 9605), (141, 9650), (143,
9656), (160, 9692), (169, 9716), (202, 9827),

Gene: Maby2021_33 Start: 10918, Stop: 11268, Start Num: 79
Candidate Starts for Maby2021_33:
(Start: 79 @10918 has 157 MA's), (Start: 101 @10966 has 2 MA's), (122, 11014), (141, 11059), (143,
11065), (160, 11101), (169, 11125), (202, 11236),

Gene: Magsby_55 Start: 36284, Stop: 36682, Start Num: 62
Candidate Starts for Magsby_55:
(Start: 46 @36194 has 5 MA's), (53, 36230), (Start: 62 @36284 has 4 MA's), (128, 36437), (129,
36440), (142, 36467), (185, 36578), (187, 36584), (204, 36671),

Gene: Manatee_11 Start: 6673, Stop: 6987, Start Num: 77
Candidate Starts for Manatee_11:
(Start: 77 @6673 has 19 MA's), (Start: 97 @6712 has 18 MA's), (106, 6721), (139, 6790), (177, 6865),
(198, 6925),

Gene: Mangeria_35 Start: 11441, Stop: 11791, Start Num: 79
Candidate Starts for Mangeria_35:
(Start: 79 @11441 has 157 MA's), (Start: 101 @11489 has 2 MA's), (122, 11537), (141, 11582), (143,
11588), (160, 11624), (169, 11648), (202, 11759),

Gene: Maravista_93 Start: 55020, Stop: 55301, Start Num: 92
Candidate Starts for Maravista_93:

(16, 54609), (18, 54630), (20, 54651), (22, 54681), (Start: 92 @55020 has 39 MA's), (117, 55065), (124, 55083), (185, 55200),

Gene: Marcie_61 Start: 38811, Stop: 38491, Start Num: 89

Candidate Starts for Marcie_61:

(Start: 77 @38841 has 19 MA's), (Start: 86 @38814 has 1 MA's), (Start: 89 @38811 has 11 MA's), (117, 38760), (136, 38712), (149, 38682), (171, 38637), (185, 38598), (192, 38577), (198, 38562),

Gene: Martik_95 Start: 54823, Stop: 55104, Start Num: 92

Candidate Starts for Martik_95:

(16, 54412), (18, 54433), (20, 54454), (22, 54484), (Start: 92 @54823 has 39 MA's), (117, 54868), (124, 54886), (185, 55003),

Gene: Mask_58 Start: 48446, Stop: 48838, Start Num: 67

Candidate Starts for Mask_58:

(56, 48416), (Start: 67 @48446 has 2 MA's), (82, 48494), (128, 48593), (129, 48596), (142, 48623), (185, 48734), (187, 48740),

Gene: Matsumoto_31 Start: 10334, Stop: 10684, Start Num: 79

Candidate Starts for Matsumoto_31:

(Start: 79 @10334 has 157 MA's), (Start: 101 @10382 has 2 MA's), (122, 10430), (141, 10475), (143, 10481), (160, 10517), (169, 10541), (202, 10652),

Gene: Mattes_97 Start: 54029, Stop: 54310, Start Num: 92

Candidate Starts for Mattes_97:

(16, 53618), (18, 53639), (20, 53660), (22, 53690), (Start: 92 @54029 has 39 MA's), (117, 54074), (124, 54092), (185, 54209), (198, 54245),

Gene: McGee_31 Start: 9557, Stop: 9907, Start Num: 79

Candidate Starts for McGee_31:

(Start: 79 @9557 has 157 MA's), (Start: 101 @9605 has 2 MA's), (122, 9653), (141, 9698), (143, 9704), (160, 9740), (169, 9764), (202, 9875),

Gene: McGuire_11 Start: 6718, Stop: 7032, Start Num: 77

Candidate Starts for McGuire_11:

(Start: 77 @6718 has 19 MA's), (Start: 97 @6757 has 18 MA's), (106, 6766), (139, 6835), (177, 6910), (198, 6970),

Gene: McWolfish_31 Start: 10665, Stop: 11015, Start Num: 79

Candidate Starts for McWolfish_31:

(Start: 79 @10665 has 157 MA's), (Start: 101 @10713 has 2 MA's), (122, 10761), (141, 10806), (143, 10812), (160, 10848), (169, 10872), (202, 10983),

Gene: Megamind_32 Start: 10903, Stop: 11253, Start Num: 79

Candidate Starts for Megamind_32:

(Start: 79 @10903 has 157 MA's), (Start: 101 @10951 has 2 MA's), (122, 10999), (141, 11044), (143, 11050), (160, 11086), (169, 11110), (202, 11221),

Gene: MellowYellow_7 Start: 3065, Stop: 3472, Start Num: 71

Candidate Starts for MellowYellow_7:

(Start: 71 @3065 has 10 MA's), (91, 3116), (Start: 97 @3125 has 18 MA's), (131, 3212), (155, 3260), (175, 3326), (181, 3344), (187, 3362),

Gene: Melpomini_31 Start: 9775, Stop: 10125, Start Num: 79

Candidate Starts for Melpomini_31:

(Start: 79 @9775 has 157 MA's), (Start: 101 @9823 has 2 MA's), (122, 9871), (141, 9916), (143, 9922), (160, 9958), (169, 9982), (202, 10093),

Gene: MikeLiesIn_32 Start: 10918, Stop: 11268, Start Num: 79

Candidate Starts for MikeLiesIn_32:

(Start: 79 @10918 has 157 MA's), (Start: 101 @10966 has 2 MA's), (122, 11014), (141, 11059), (143, 11065), (160, 11101), (169, 11125), (202, 11236),

Gene: Mikro_30 Start: 11404, Stop: 11754, Start Num: 79

Candidate Starts for Mikro_30:

(Start: 79 @11404 has 157 MA's), (Start: 101 @11452 has 2 MA's), (122, 11500), (141, 11545), (143, 11551), (160, 11587), (169, 11611), (202, 11722),

Gene: Minnie_91 Start: 54441, Stop: 54722, Start Num: 92

Candidate Starts for Minnie_91:

(16, 54030), (18, 54051), (20, 54072), (22, 54102), (Start: 92 @54441 has 39 MA's), (117, 54486), (124, 54504), (185, 54621),

Gene: MoMoMixon_33 Start: 11232, Stop: 11582, Start Num: 79

Candidate Starts for MoMoMixon_33:

(Start: 79 @11232 has 157 MA's), (Start: 101 @11280 has 2 MA's), (122, 11328), (141, 11373), (143, 11379), (160, 11415), (169, 11439), (202, 11550),

Gene: Momo_31 Start: 10373, Stop: 10723, Start Num: 79

Candidate Starts for Momo_31:

(Start: 79 @10373 has 157 MA's), (Start: 101 @10421 has 2 MA's), (122, 10469), (141, 10514), (143, 10520), (160, 10556), (169, 10580), (202, 10691),

Gene: Mooshroom_72 Start: 44083, Stop: 44394, Start Num: 97

Candidate Starts for Mooshroom_72:

(Start: 97 @44083 has 18 MA's), (125, 44146), (161, 44224), (168, 44245), (179, 44269), (183, 44287), (195, 44317),

Gene: Morizzled23_31 Start: 9769, Stop: 10119, Start Num: 79

Candidate Starts for Morizzled23_31:

(Start: 79 @9769 has 157 MA's), (Start: 101 @9817 has 2 MA's), (122, 9865), (141, 9910), (143, 9916), (160, 9952), (169, 9976), (202, 10087),

Gene: MortyNRick_62 Start: 41583, Stop: 41870, Start Num: 92

Candidate Starts for MortyNRick_62:

(27, 41283), (33, 41334), (35, 41346), (40, 41370), (54, 41457), (Start: 85 @41571 has 1 MA's), (Start: 92 @41583 has 39 MA's), (117, 41628), (156, 41700), (189, 41778), (198, 41802), (204, 41859),

Gene: Mossy_1 Start: 220, Stop: 549, Start Num: 73

Candidate Starts for Mossy_1:

(Start: 73 @220 has 3 MA's), (Start: 97 @268 has 18 MA's), (137, 352), (175, 427), (185, 454), (190, 466),

Gene: Mudcat_68 Start: 45168, Stop: 45479, Start Num: 97

Candidate Starts for Mudcat_68:

(Start: 97 @45168 has 18 MA's), (125, 45231), (161, 45309), (168, 45330), (179, 45354), (183, 45372), (195, 45402),

Gene: Myrna_235 Start: 137260, Stop: 137607, Start Num: 94

Candidate Starts for Myrna_235:

(15, 136774), (24, 136918), (29, 136978), (48, 137095), (Start: 94 @137260 has 3 MA's), (117, 137311), (185, 137461), (187, 137467), (191, 137476), (194, 137485), (212, 137599),

Gene: Naija_32 Start: 10373, Stop: 10723, Start Num: 79

Candidate Starts for Naija_32:

(Start: 79 @10373 has 157 MA's), (Start: 101 @10421 has 2 MA's), (122, 10469), (141, 10514), (143, 10520), (160, 10556), (169, 10580), (202, 10691),

Gene: Naira_11 Start: 6952, Stop: 7266, Start Num: 77

Candidate Starts for Naira_11:

(Start: 77 @6952 has 19 MA's), (Start: 97 @6991 has 18 MA's), (139, 7069), (167, 7114),

Gene: Napoleon13_31 Start: 9788, Stop: 10138, Start Num: 79

Candidate Starts for Napoleon13_31:

(Start: 79 @9788 has 157 MA's), (Start: 101 @9836 has 2 MA's), (122, 9884), (141, 9929), (143, 9935), (160, 9971), (169, 9995), (202, 10106),

Gene: NapoleonB_73 Start: 44325, Stop: 44636, Start Num: 97

Candidate Starts for NapoleonB_73:

(Start: 97 @44325 has 18 MA's), (125, 44388), (161, 44466), (168, 44487), (179, 44511), (183, 44529), (195, 44559),

Gene: Nappy_33 Start: 11083, Stop: 11433, Start Num: 79

Candidate Starts for Nappy_33:

(Start: 79 @11083 has 157 MA's), (Start: 101 @11131 has 2 MA's), (122, 11179), (141, 11224), (143, 11230), (160, 11266), (169, 11290), (202, 11401),

Gene: Nason_72 Start: 44474, Stop: 44782, Start Num: 97

Candidate Starts for Nason_72:

(Start: 97 @44474 has 18 MA's), (144, 44576), (161, 44612), (183, 44675), (195, 44705),

Gene: Naval22_34 Start: 10958, Stop: 11308, Start Num: 79

Candidate Starts for Naval22_34:

(Start: 79 @10958 has 157 MA's), (Start: 101 @11006 has 2 MA's), (122, 11054), (141, 11099), (143, 11105), (160, 11141), (169, 11165), (202, 11276),

Gene: NedWong_33 Start: 10918, Stop: 11268, Start Num: 79

Candidate Starts for NedWong_33:

(Start: 79 @10918 has 157 MA's), (Start: 101 @10966 has 2 MA's), (122, 11014), (141, 11059), (143, 11065), (160, 11101), (169, 11125), (202, 11236),

Gene: Ngannou_30 Start: 9549, Stop: 9899, Start Num: 79

Candidate Starts for Ngannou_30:

(Start: 79 @9549 has 157 MA's), (Start: 101 @9597 has 2 MA's), (122, 9645), (141, 9690), (143, 9696), (160, 9732), (169, 9756), (202, 9867),

Gene: Nidhogg_33 Start: 10982, Stop: 11332, Start Num: 79

Candidate Starts for Nidhogg_33:

(Start: 79 @10982 has 157 MA's), (Start: 101 @11030 has 2 MA's), (122, 11078), (141, 11123), (143, 11129), (160, 11165), (169, 11189), (202, 11300),

Gene: Nina_52 Start: 37854, Stop: 37525, Start Num: 77

Candidate Starts for Nina_52:

(Start: 77 @37854 has 19 MA's), (Start: 97 @37815 has 18 MA's), (141, 37722), (175, 37653),

Gene: Nivrat_96 Start: 53965, Stop: 54246, Start Num: 92

Candidate Starts for Nivrat_96:

(16, 53554), (18, 53575), (20, 53596), (22, 53626), (Start: 92 @53965 has 39 MA's), (117, 54010), (124, 54028), (185, 54145),

Gene: NoodleTree_31 Start: 10680, Stop: 11030, Start Num: 79

Candidate Starts for NoodleTree_31:

(Start: 79 @10680 has 157 MA's), (Start: 101 @10728 has 2 MA's), (122, 10776), (141, 10821), (143, 10827), (160, 10863), (169, 10887), (202, 10998),

Gene: Norm_32 Start: 10918, Stop: 11268, Start Num: 79

Candidate Starts for Norm_32:

(Start: 79 @10918 has 157 MA's), (Start: 101 @10966 has 2 MA's), (122, 11014), (141, 11059), (143, 11065), (160, 11101), (169, 11125), (202, 11236),

Gene: NormanBulbieJr_94 Start: 54069, Stop: 54350, Start Num: 92

Candidate Starts for NormanBulbieJr_94:

(16, 53658), (18, 53679), (20, 53700), (22, 53730), (Start: 92 @54069 has 39 MA's), (117, 54114), (124, 54132), (185, 54249),

Gene: NuevoMundo_35 Start: 11972, Stop: 12322, Start Num: 79

Candidate Starts for NuevoMundo_35:

(Start: 79 @11972 has 157 MA's), (Start: 101 @12020 has 2 MA's), (122, 12068), (141, 12113), (143, 12119), (160, 12155), (169, 12179), (202, 12290),

Gene: Octobien14_114 Start: 63585, Stop: 63860, Start Num: 110

Candidate Starts for Octobien14_114:

(65, 63468), (Start: 110 @63585 has 4 MA's), (138, 63651), (203, 63849),

Gene: Odyssey395_10 Start: 3459, Stop: 3866, Start Num: 71

Candidate Starts for Odyssey395_10:

(Start: 71 @3459 has 10 MA's), (91, 3510), (Start: 97 @3519 has 18 MA's), (131, 3606), (155, 3654), (175, 3720), (181, 3738), (187, 3756),

Gene: OlympiaSaint_100 Start: 54235, Stop: 54516, Start Num: 92

Candidate Starts for OlympiaSaint_100:

(16, 53824), (18, 53845), (20, 53866), (22, 53896), (Start: 92 @54235 has 39 MA's), (117, 54280), (124, 54298), (185, 54415),

Gene: OneinaGillian_56 Start: 37823, Stop: 37530, Start Num: 89

Candidate Starts for OneinaGillian_56:

(Start: 77 @37853 has 19 MA's), (Start: 86 @37826 has 1 MA's), (Start: 89 @37823 has 11 MA's), (96, 37811), (117, 37772), (118, 37769), (130, 37736), (136, 37724), (148, 37715), (185, 37637), (192, 37616), (198, 37601),

Gene: Paella_133 Start: 71406, Stop: 71771, Start Num: 101

Candidate Starts for Paella_133:

(70, 71328), (Start: 101 @71406 has 2 MA's), (146, 71517), (176, 71592), (194, 71643),

Gene: Paella_124 Start: 68080, Stop: 68388, Start Num: 116

Candidate Starts for Paella_124:

(Start: 116 @68080 has 2 MA's), (133, 68125), (152, 68164), (187, 68260),

Gene: ParkTD_31 Start: 10918, Stop: 11268, Start Num: 79

Candidate Starts for ParkTD_31:

(Start: 79 @10918 has 157 MA's), (Start: 101 @10966 has 2 MA's), (122, 11014), (141, 11059), (143, 11065), (160, 11101), (169, 11125), (202, 11236),

Gene: Parmesanjohn_55 Start: 36197, Stop: 36685, Start Num: 46

Candidate Starts for Parmesanjohn_55:

(Start: 46 @36197 has 5 MA's), (53, 36233), (Start: 62 @36287 has 4 MA's), (128, 36440), (129, 36443), (142, 36470), (185, 36581), (187, 36587), (204, 36674),

Gene: ParvusTarda_93 Start: 64024, Stop: 64359, Start Num: 78

Candidate Starts for ParvusTarda_93:

(Start: 78 @64024 has 2 MA's), (81, 64033), (84, 64042), (Start: 89 @64051 has 11 MA's), (117, 64099), (185, 64252), (194, 64276), (204, 64345),

Gene: Patter_32 Start: 10390, Stop: 10740, Start Num: 79

Candidate Starts for Patter_32:

(Start: 79 @10390 has 157 MA's), (Start: 101 @10438 has 2 MA's), (122, 10486), (141, 10531), (143, 10537), (160, 10573), (169, 10597), (202, 10708),

Gene: PauloDiaboli_215 Start: 113653, Stop: 113336, Start Num: 102

Candidate Starts for PauloDiaboli_215:

(Start: 102 @113653 has 3 MA's), (156, 113536), (171, 113497), (185, 113458), (200, 113401), (209, 113341),

Gene: Peas_65 Start: 41993, Stop: 42271, Start Num: 89

Candidate Starts for Peas_65:

(13, 41477), (36, 41768), (57, 41897), (Start: 89 @41993 has 11 MA's), (183, 42167), (185, 42170), (198, 42206), (203, 42260),

Gene: Pepe25_55 Start: 37387, Stop: 37064, Start Num: 89

Candidate Starts for Pepe25_55:

(Start: 77 @37417 has 19 MA's), (Start: 86 @37390 has 1 MA's), (Start: 89 @37387 has 11 MA's), (96, 37375), (109, 37351), (117, 37336), (130, 37300), (136, 37288), (149, 37258), (171, 37213), (185, 37174),

Gene: Perkunas_2 Start: 448, Stop: 780, Start Num: 73

Candidate Starts for Perkunas_2:

(Start: 73 @448 has 3 MA's), (105, 514), (185, 682), (194, 706),

Gene: Phabba_246 Start: 137077, Stop: 137433, Start Num: 94

Candidate Starts for Phabba_246:

(25, 136756), (43, 136897), (Start: 94 @137077 has 3 MA's), (117, 137128), (150, 137203), (168, 137236), (170, 137245), (185, 137287), (187, 137293), (191, 137302), (194, 137311),

Gene: Philus_98 Start: 54977, Stop: 55258, Start Num: 92

Candidate Starts for Philus_98:

(16, 54566), (18, 54587), (20, 54608), (22, 54638), (Start: 92 @54977 has 39 MA's), (117, 55022), (124, 55040), (185, 55157),

Gene: Phlegm_34 Start: 10373, Stop: 10723, Start Num: 79

Candidate Starts for Phlegm_34:

(Start: 79 @10373 has 157 MA's), (Start: 101 @10421 has 2 MA's), (122, 10469), (141, 10514), (143, 10520), (160, 10556), (169, 10580), (202, 10691),

Gene: Phloss_53 Start: 35604, Stop: 36092, Start Num: 46

Candidate Starts for Phloss_53:

(Start: 46 @35604 has 5 MA's), (53, 35640), (Start: 62 @35694 has 4 MA's), (128, 35847), (129, 35850), (142, 35877), (185, 35988), (187, 35994), (204, 36081),

Gene: Phox_31 Start: 11082, Stop: 11432, Start Num: 79

Candidate Starts for Phox_31:

(Start: 79 @11082 has 157 MA's), (Start: 101 @11130 has 2 MA's), (122, 11178), (141, 11223), (143, 11229), (160, 11265), (169, 11289), (202, 11400),

Gene: Phusco_32 Start: 10369, Stop: 10719, Start Num: 79

Candidate Starts for Phusco_32:

(Start: 79 @10369 has 157 MA's), (Start: 101 @10417 has 2 MA's), (122, 10465), (141, 10510), (143, 10516), (160, 10552), (169, 10576), (202, 10687),

Gene: Pier_34 Start: 11076, Stop: 11426, Start Num: 79

Candidate Starts for Pier_34:

(Start: 79 @11076 has 157 MA's), (Start: 101 @11124 has 2 MA's), (122, 11172), (141, 11217), (143, 11223), (160, 11259), (169, 11283), (202, 11394),

Gene: PinkPlastic_9 Start: 6480, Stop: 6794, Start Num: 77

Candidate Starts for PinkPlastic_9:

(Start: 77 @6480 has 19 MA's), (Start: 97 @6519 has 18 MA's), (106, 6528), (139, 6597), (177, 6672), (198, 6732),

Gene: Pio_35 Start: 11767, Stop: 12117, Start Num: 79

Candidate Starts for Pio_35:

(Start: 79 @11767 has 157 MA's), (Start: 101 @11815 has 2 MA's), (122, 11863), (141, 11908), (143, 11914), (160, 11950), (169, 11974), (202, 12085),

Gene: Pipp_48 Start: 34437, Stop: 34712, Start Num: 93

Candidate Starts for Pipp_48:

(Start: 93 @34437 has 1 MA's), (185, 34608), (194, 34632),

Gene: Pippy_94 Start: 52340, Stop: 52621, Start Num: 92

Candidate Starts for Pippy_94:

(16, 51929), (18, 51950), (20, 51971), (22, 52001), (Start: 92 @52340 has 39 MA's), (117, 52385), (124, 52403), (185, 52520),

Gene: Pipsqueaks_56 Start: 36265, Stop: 36663, Start Num: 62

Candidate Starts for Pipsqueaks_56:

(Start: 46 @36175 has 5 MA's), (53, 36211), (Start: 62 @36265 has 4 MA's), (128, 36418), (129, 36421), (142, 36448), (185, 36559), (187, 36565), (204, 36652),

Gene: Pivoine_32 Start: 10373, Stop: 10723, Start Num: 79

Candidate Starts for Pivoine_32:

(Start: 79 @10373 has 157 MA's), (Start: 101 @10421 has 2 MA's), (122, 10469), (141, 10514), (143, 10520), (160, 10556), (169, 10580), (202, 10691),

Gene: Pleione_34 Start: 10918, Stop: 11268, Start Num: 79

Candidate Starts for Pleione_34:

(Start: 79 @10918 has 157 MA's), (Start: 101 @10966 has 2 MA's), (122, 11014), (141, 11059), (143, 11065), (160, 11101), (169, 11125), (202, 11236),

Gene: Pointis_8 Start: 3460, Stop: 3867, Start Num: 71

Candidate Starts for Pointis_8:

(Start: 71 @3460 has 10 MA's), (91, 3511), (Start: 97 @3520 has 18 MA's), (131, 3607), (155, 3655), (175, 3721), (181, 3739), (187, 3757),

Gene: Priscilla_97 Start: 54167, Stop: 54448, Start Num: 92

Candidate Starts for Priscilla_97:

(16, 53756), (18, 53777), (20, 53798), (22, 53828), (Start: 92 @54167 has 39 MA's), (117, 54212), (124, 54230), (185, 54347),

Gene: Pumpernickel_196 Start: 112347, Stop: 112042, Start Num: 102

Candidate Starts for Pumpernickel_196:

(Start: 102 @112347 has 3 MA's), (104, 112341), (133, 112272), (186, 112170), (208, 112059),

Gene: PurduePete_31 Start: 10629, Stop: 10979, Start Num: 79

Candidate Starts for PurduePete_31:

(Start: 79 @10629 has 157 MA's), (Start: 101 @10677 has 2 MA's), (122, 10725), (141, 10770), (143, 10776), (160, 10812), (169, 10836), (202, 10947),

Gene: Pureglobe5_10 Start: 3473, Stop: 3880, Start Num: 71

Candidate Starts for Pureglobe5_10:

(Start: 71 @3473 has 10 MA's), (91, 3524), (Start: 97 @3533 has 18 MA's), (131, 3620), (155, 3668), (175, 3734), (181, 3752), (187, 3770),

Gene: QBert_30 Start: 11082, Stop: 11432, Start Num: 79

Candidate Starts for QBert_30:

(Start: 79 @11082 has 157 MA's), (Start: 101 @11130 has 2 MA's), (122, 11178), (141, 11223), (143, 11229), (160, 11265), (169, 11289), (202, 11400),

Gene: Quasimodo_32 Start: 11333, Stop: 11683, Start Num: 79

Candidate Starts for Quasimodo_32:

(Start: 79 @11333 has 157 MA's), (Start: 101 @11381 has 2 MA's), (122, 11429), (141, 11474), (143, 11480), (160, 11516), (169, 11540), (202, 11651),

Gene: Qui_124 Start: 68080, Stop: 68388, Start Num: 116

Candidate Starts for Qui_124:

(Start: 116 @68080 has 2 MA's), (133, 68125), (152, 68164), (187, 68260),

Gene: Qui_133 Start: 71406, Stop: 71771, Start Num: 101

Candidate Starts for Qui_133:

(70, 71328), (Start: 101 @71406 has 2 MA's), (146, 71517), (176, 71592), (194, 71643),

Gene: Rahel_32 Start: 10369, Stop: 10719, Start Num: 79

Candidate Starts for Rahel_32:

(Start: 79 @10369 has 157 MA's), (Start: 101 @10417 has 2 MA's), (122, 10465), (141, 10510), (143, 10516), (160, 10552), (169, 10576), (202, 10687),

Gene: Rajelicia_10 Start: 6620, Stop: 6934, Start Num: 77

Candidate Starts for Rajelicia_10:

(Start: 77 @6620 has 19 MA's), (Start: 97 @6659 has 18 MA's), (106, 6668), (139, 6737), (177, 6812), (198, 6872),

Gene: Ranunculus_6 Start: 3041, Stop: 3424, Start Num: 71

Candidate Starts for Ranunculus_6:

(Start: 71 @3041 has 10 MA's), (155, 3236), (177, 3305), (181, 3320), (186, 3335), (187, 3338),

Gene: RedBaron_55 Start: 37907, Stop: 37578, Start Num: 77

Candidate Starts for RedBaron_55:

(Start: 77 @37907 has 19 MA's), (Start: 97 @37868 has 18 MA's), (141, 37775), (175, 37706),

Gene: Rizal_30 Start: 9835, Stop: 10185, Start Num: 79

Candidate Starts for Rizal_30:

(Start: 79 @9835 has 157 MA's), (Start: 101 @9883 has 2 MA's), (122, 9931), (141, 9976), (143, 9982), (160, 10018), (169, 10042), (202, 10153),

Gene: Rizwana_7 Start: 3422, Stop: 3844, Start Num: 74

Candidate Starts for Rizwana_7:

(55, 3356), (Start: 74 @3422 has 3 MA's), (88, 3458), (107, 3500), (131, 3560), (186, 3707), (187, 3710),

Gene: RoMag_27 Start: 10167, Stop: 10517, Start Num: 79

Candidate Starts for RoMag_27:

(Start: 79 @10167 has 157 MA's), (Start: 101 @10215 has 2 MA's), (122, 10263), (141, 10308), (143, 10314), (160, 10350), (169, 10374), (202, 10485),

Gene: RobinRose_58 Start: 38338, Stop: 38039, Start Num: 86

Candidate Starts for RobinRose_58:

(Start: 77 @38365 has 19 MA's), (Start: 86 @38338 has 1 MA's), (Start: 89 @38335 has 11 MA's), (96, 38323), (109, 38299), (117, 38284), (136, 38236), (148, 38227), (170, 38191), (185, 38149), (192, 38128),

Gene: Romm_58 Start: 38320, Stop: 38039, Start Num: 96

Candidate Starts for Romm_58:

(Start: 77 @38362 has 19 MA's), (Start: 86 @38335 has 1 MA's), (Start: 89 @38332 has 11 MA's), (96, 38320), (117, 38281), (118, 38278), (130, 38245), (136, 38233), (148, 38224), (185, 38146), (192, 38125), (198, 38110),

Gene: Ronan_27 Start: 8475, Stop: 8825, Start Num: 79

Candidate Starts for Ronan_27:

(Start: 79 @8475 has 157 MA's), (Start: 101 @8523 has 2 MA's), (122, 8571), (141, 8616), (143, 8622), (160, 8658), (169, 8682), (202, 8793),

Gene: Roots515_32 Start: 10917, Stop: 11267, Start Num: 79

Candidate Starts for Roots515_32:

(Start: 79 @10917 has 157 MA's), (Start: 101 @10965 has 2 MA's), (122, 11013), (141, 11058), (143, 11064), (160, 11100), (169, 11124), (202, 11235),

Gene: SJReid_73 Start: 30780, Stop: 31085, Start Num: 78

Candidate Starts for SJReid_73:

(Start: 78 @30780 has 2 MA's),

Gene: Saal_94 Start: 53731, Stop: 54012, Start Num: 92

Candidate Starts for Saal_94:

(16, 53320), (18, 53341), (20, 53362), (22, 53392), (Start: 92 @53731 has 39 MA's), (117, 53776), (124, 53794), (185, 53911),

Gene: SadLad_63 Start: 46437, Stop: 46174, Start Num: 98

Candidate Starts for SadLad_63:

(Start: 98 @46437 has 2 MA's), (113, 46410), (123, 46389), (185, 46278), (198, 46242), (204, 46185),

Gene: Salacia_34 Start: 10918, Stop: 11268, Start Num: 79

Candidate Starts for Salacia_34:

(Start: 79 @10918 has 157 MA's), (Start: 101 @10966 has 2 MA's), (122, 11014), (141, 11059), (143, 11065), (160, 11101), (169, 11125), (202, 11236),

Gene: Sandalphon_96 Start: 54715, Stop: 55005, Start Num: 87

Candidate Starts for Sandalphon_96:

(Start: 87 @54715 has 1 MA's), (117, 54769), (124, 54787), (185, 54904),

Gene: Sauce_33 Start: 11045, Stop: 11395, Start Num: 79

Candidate Starts for Sauce_33:

(Start: 79 @11045 has 157 MA's), (Start: 101 @11093 has 2 MA's), (122, 11141), (141, 11186), (143, 11192), (160, 11228), (169, 11252), (202, 11363),

Gene: Schnauzer_56 Start: 36197, Stop: 36685, Start Num: 46

Candidate Starts for Schnauzer_56:

(Start: 46 @36197 has 5 MA's), (53, 36233), (Start: 62 @36287 has 4 MA's), (128, 36440), (129, 36443), (142, 36470), (185, 36581), (187, 36587), (204, 36674),

Gene: ScoobyDoobyDoo_233 Start: 134075, Stop: 134443, Start Num: 94

Candidate Starts for ScoobyDoobyDoo_233:

(Start: 94 @134075 has 3 MA's), (166, 134234), (187, 134303), (194, 134321), (203, 134387), (209, 134414),

Gene: ScottMcG_32 Start: 11225, Stop: 11575, Start Num: 79

Candidate Starts for ScottMcG_32:

(Start: 79 @11225 has 157 MA's), (Start: 101 @11273 has 2 MA's), (122, 11321), (141, 11366), (143, 11372), (160, 11408), (169, 11432), (202, 11543),

Gene: Seabiscuit_12 Start: 6693, Stop: 7034, Start Num: 69

Candidate Starts for Seabiscuit_12:

(Start: 69 @6693 has 1 MA's), (Start: 77 @6720 has 19 MA's), (Start: 97 @6759 has 18 MA's), (106, 6768), (139, 6837), (177, 6912), (198, 6972),

Gene: Sebata_32 Start: 11268, Stop: 11618, Start Num: 79

Candidate Starts for Sebata_32:

(Start: 79 @11268 has 157 MA's), (Start: 101 @11316 has 2 MA's), (122, 11364), (141, 11409), (143, 11415), (160, 11451), (169, 11475), (202, 11586),

Gene: Sephiroth_114 Start: 64560, Stop: 64826, Start Num: 110
Candidate Starts for Sephiroth_114:
(65, 64443), (Start: 110 @64560 has 4 MA's), (188, 64734), (203, 64815),

Gene: SeresaTree_71 Start: 55390, Stop: 55779, Start Num: 71
Candidate Starts for SeresaTree_71:
(Start: 71 @55390 has 10 MA's), (111, 55477), (115, 55486), (148, 55558), (151, 55564), (205, 55741), (206, 55750),

Gene: Sham_67 Start: 56064, Stop: 56453, Start Num: 71
Candidate Starts for Sham_67:
(Start: 71 @56064 has 10 MA's), (80, 56091), (151, 56238), (206, 56424),

Gene: Shaqnato_28 Start: 9480, Stop: 9830, Start Num: 79
Candidate Starts for Shaqnato_28:
(Start: 79 @9480 has 157 MA's), (Start: 101 @9528 has 2 MA's), (122, 9576), (141, 9621), (143, 9627), (160, 9663), (169, 9687), (202, 9798),

Gene: ShiLan_99 Start: 55748, Stop: 56029, Start Num: 92
Candidate Starts for ShiLan_99:
(16, 55337), (18, 55358), (20, 55379), (22, 55409), (Start: 92 @55748 has 39 MA's), (117, 55793), (124, 55811), (185, 55928), (198, 55964),

Gene: ShiaLabeouf_32 Start: 10369, Stop: 10719, Start Num: 79
Candidate Starts for ShiaLabeouf_32:
(Start: 79 @10369 has 157 MA's), (Start: 101 @10417 has 2 MA's), (122, 10465), (141, 10510), (143, 10516), (160, 10552), (169, 10576), (202, 10687),

Gene: Shifa_29 Start: 10551, Stop: 10901, Start Num: 79
Candidate Starts for Shifa_29:
(Start: 79 @10551 has 157 MA's), (Start: 101 @10599 has 2 MA's), (122, 10647), (141, 10692), (143, 10698), (160, 10734), (169, 10758), (202, 10869),

Gene: Shnickers_32 Start: 10369, Stop: 10719, Start Num: 79
Candidate Starts for Shnickers_32:
(Start: 79 @10369 has 157 MA's), (Start: 101 @10417 has 2 MA's), (122, 10465), (141, 10510), (143, 10516), (160, 10552), (169, 10576), (202, 10687),

Gene: Shocker_3 Start: 902, Stop: 1168, Start Num: 95
Candidate Starts for Shocker_3:
(Start: 95 @902 has 1 MA's), (123, 956), (185, 1067),

Gene: ShowerHandel_94 Start: 53013, Stop: 53294, Start Num: 92
Candidate Starts for ShowerHandel_94:
(16, 52602), (18, 52623), (20, 52644), (22, 52674), (Start: 92 @53013 has 39 MA's), (117, 53058), (124, 53076), (185, 53193),

Gene: Shrimp_32 Start: 10922, Stop: 11272, Start Num: 79
Candidate Starts for Shrimp_32:
(Start: 79 @10922 has 157 MA's), (Start: 101 @10970 has 2 MA's), (122, 11018), (141, 11063), (143, 11069), (160, 11105), (169, 11129), (202, 11240),

Gene: SilentRX_7 Start: 2575, Stop: 2988, Start Num: 74

Candidate Starts for SilentRX_7:

(Start: 74 @2575 has 3 MA's), (114, 2665), (157, 2764), (163, 2782), (195, 2878),

Gene: SilverDipper_33 Start: 10373, Stop: 10723, Start Num: 79

Candidate Starts for SilverDipper_33:

(Start: 79 @10373 has 157 MA's), (Start: 101 @10421 has 2 MA's), (122, 10469), (141, 10514), (143, 10520), (160, 10556), (169, 10580), (202, 10691),

Gene: Slagathor_11 Start: 6591, Stop: 6905, Start Num: 77

Candidate Starts for Slagathor_11:

(Start: 77 @6591 has 19 MA's), (Start: 97 @6630 has 18 MA's), (106, 6639), (139, 6708), (177, 6783), (198, 6843),

Gene: SmallFry_32 Start: 10369, Stop: 10719, Start Num: 79

Candidate Starts for SmallFry_32:

(Start: 79 @10369 has 157 MA's), (Start: 101 @10417 has 2 MA's), (122, 10465), (141, 10510), (143, 10516), (160, 10552), (169, 10576), (202, 10687),

Gene: Smurph_55 Start: 36197, Stop: 36685, Start Num: 46

Candidate Starts for Smurph_55:

(Start: 46 @36197 has 5 MA's), (53, 36233), (Start: 62 @36287 has 4 MA's), (128, 36440), (129, 36443), (142, 36470), (185, 36581), (187, 36587), (204, 36674),

Gene: SoilAssassin_55 Start: 39034, Stop: 39414, Start Num: 66

Candidate Starts for SoilAssassin_55:

(Start: 66 @39034 has 3 MA's), (83, 39088), (147, 39217), (167, 39253), (175, 39280), (177, 39283), (187, 39313), (194, 39331), (198, 39343), (204, 39400),

Gene: Spec_30 Start: 10375, Stop: 10725, Start Num: 79

Candidate Starts for Spec_30:

(Start: 79 @10375 has 157 MA's), (Start: 101 @10423 has 2 MA's), (122, 10471), (141, 10516), (143, 10522), (160, 10558), (169, 10582), (202, 10693),

Gene: Specks_37 Start: 12207, Stop: 12557, Start Num: 79

Candidate Starts for Specks_37:

(Start: 79 @12207 has 157 MA's), (Start: 101 @12255 has 2 MA's), (122, 12303), (141, 12348), (143, 12354), (160, 12390), (169, 12414), (202, 12525),

Gene: SpeedDemon_540 Start: 45518, Stop: 45787, Start Num: 103

Candidate Starts for SpeedDemon_540:

(Start: 103 @45518 has 2 MA's), (128, 45566), (172, 45662), (185, 45686),

Gene: Spoonbill_96 Start: 51661, Stop: 51942, Start Num: 92

Candidate Starts for Spoonbill_96:

(16, 51250), (18, 51271), (20, 51292), (22, 51322), (Start: 92 @51661 has 39 MA's), (117, 51706), (124, 51724), (185, 51841),

Gene: Sprinklers_32 Start: 10407, Stop: 10757, Start Num: 79

Candidate Starts for Sprinklers_32:

(Start: 79 @10407 has 157 MA's), (Start: 101 @10455 has 2 MA's), (122, 10503), (141, 10548), (143, 10554), (160, 10590), (169, 10614), (202, 10725),

Gene: Spud_34 Start: 11764, Stop: 12114, Start Num: 79

Candidate Starts for Spud_34:

(Start: 79 @11764 has 157 MA's), (Start: 101 @11812 has 2 MA's), (122, 11860), (141, 11905), (143, 11911), (160, 11947), (169, 11971), (202, 12082),

Gene: Squee_11 Start: 7115, Stop: 7429, Start Num: 77

Candidate Starts for Squee_11:

(Start: 77 @7115 has 19 MA's), (Start: 97 @7154 has 18 MA's), (139, 7232), (167, 7277),

Gene: Squiddly_103 Start: 56800, Stop: 57090, Start Num: 92

Candidate Starts for Squiddly_103:

(44, 56620), (45, 56623), (58, 56704), (Start: 79 @56770 has 157 MA's), (Start: 92 @56800 has 39 MA's), (156, 56917), (178, 56971), (198, 57028),

Gene: SrishMeg2525_31 Start: 10629, Stop: 10979, Start Num: 79

Candidate Starts for SrishMeg2525_31:

(Start: 79 @10629 has 157 MA's), (Start: 101 @10677 has 2 MA's), (122, 10725), (141, 10770), (143, 10776), (160, 10812), (169, 10836), (202, 10947),

Gene: StAugustine_153 Start: 85407, Stop: 85078, Start Num: 72

Candidate Starts for StAugustine_153:

(72, 85407), (99, 85350), (159, 85212), (168, 85188), (182, 85140),

Gene: StephanieG_32 Start: 11098, Stop: 11448, Start Num: 79

Candidate Starts for StephanieG_32:

(Start: 79 @11098 has 157 MA's), (Start: 101 @11146 has 2 MA's), (122, 11194), (141, 11239), (143, 11245), (160, 11281), (169, 11305), (202, 11416),

Gene: StubbySaigey_31 Start: 9558, Stop: 9908, Start Num: 79

Candidate Starts for StubbySaigey_31:

(Start: 79 @9558 has 157 MA's), (Start: 101 @9606 has 2 MA's), (122, 9654), (141, 9699), (143, 9705), (160, 9741), (169, 9765), (202, 9876),

Gene: SwagPigglett_98 Start: 54867, Stop: 55148, Start Num: 92

Candidate Starts for SwagPigglett_98:

(16, 54456), (18, 54477), (20, 54498), (22, 54528), (Start: 92 @54867 has 39 MA's), (117, 54912), (124, 54930), (185, 55047),

Gene: Switzer_11 Start: 6599, Stop: 6913, Start Num: 77

Candidate Starts for Switzer_11:

(Start: 69 @6572 has 1 MA's), (Start: 77 @6599 has 19 MA's), (Start: 97 @6638 has 18 MA's), (106, 6647), (139, 6716), (177, 6791), (198, 6851),

Gene: Syleon_119 Start: 65342, Stop: 65608, Start Num: 110

Candidate Starts for Syleon_119:

(65, 65225), (Start: 110 @65342 has 4 MA's), (188, 65516), (203, 65597),

Gene: Teardrop_31 Start: 9834, Stop: 10184, Start Num: 79

Candidate Starts for Teardrop_31:

(Start: 79 @9834 has 157 MA's), (Start: 101 @9882 has 2 MA's), (122, 9930), (141, 9975), (143, 9981), (160, 10017), (169, 10041), (202, 10152),

Gene: Tempo_56 Start: 38215, Stop: 37919, Start Num: 89

Candidate Starts for Tempo_56:

(Start: 77 @38245 has 19 MA's), (Start: 86 @38218 has 1 MA's), (Start: 89 @38215 has 11 MA's), (96, 38203), (109, 38179), (117, 38164), (136, 38116), (148, 38107), (170, 38071), (185, 38029), (192, 38008),

Gene: TinyTim_32 Start: 10918, Stop: 11268, Start Num: 79

Candidate Starts for TinyTim_32:

(Start: 79 @10918 has 157 MA's), (Start: 101 @10966 has 2 MA's), (122, 11014), (141, 11059), (143, 11065), (160, 11101), (169, 11125), (202, 11236),

Gene: Tonenili_36 Start: 12007, Stop: 12357, Start Num: 79

Candidate Starts for Tonenili_36:

(50, 11887), (Start: 79 @12007 has 157 MA's), (Start: 101 @12055 has 2 MA's), (122, 12103), (141, 12148), (143, 12154), (169, 12214), (202, 12325),

Gene: Tortellini_63 Start: 43457, Stop: 43750, Start Num: 85

Candidate Starts for Tortellini_63:

(26, 43202), (28, 43223), (41, 43301), (52, 43364), (59, 43400), (Start: 85 @43457 has 1 MA's), (117, 43511), (171, 43607), (185, 43646), (194, 43670), (204, 43739),

Gene: Tortoise16_31 Start: 10369, Stop: 10719, Start Num: 79

Candidate Starts for Tortoise16_31:

(Start: 79 @10369 has 157 MA's), (Start: 101 @10417 has 2 MA's), (122, 10465), (141, 10510), (143, 10516), (160, 10552), (169, 10576), (202, 10687),

Gene: Tribby_76 Start: 45227, Stop: 45535, Start Num: 97

Candidate Starts for Tribby_76:

(Start: 97 @45227 has 18 MA's), (144, 45329), (161, 45365), (183, 45428), (195, 45458),

Gene: Trinitium_31 Start: 9823, Stop: 10173, Start Num: 79

Candidate Starts for Trinitium_31:

(Start: 79 @9823 has 157 MA's), (Start: 101 @9871 has 2 MA's), (122, 9919), (141, 9964), (143, 9970), (160, 10006), (169, 10030), (202, 10141),

Gene: TunaTartare_69 Start: 56371, Stop: 56772, Start Num: 71

Candidate Starts for TunaTartare_69:

(Start: 71 @56371 has 10 MA's), (121, 56482), (130, 56509), (134, 56515), (148, 56545), (193, 56665), (201, 56704),

Gene: Turret_30 Start: 9546, Stop: 9896, Start Num: 79

Candidate Starts for Turret_30:

(Start: 79 @9546 has 157 MA's), (Start: 101 @9594 has 2 MA's), (122, 9642), (141, 9687), (143, 9693), (160, 9729), (169, 9753), (202, 9864),

Gene: Tyke_34 Start: 11781, Stop: 12131, Start Num: 79

Candidate Starts for Tyke_34:

(Start: 79 @11781 has 157 MA's), (Start: 101 @11829 has 2 MA's), (122, 11877), (141, 11922), (143, 11928), (160, 11964), (169, 11988), (202, 12099),

Gene: U2_10 Start: 6601, Stop: 6915, Start Num: 77

Candidate Starts for U2_10:

(Start: 69 @6574 has 1 MA's), (Start: 77 @6601 has 19 MA's), (Start: 97 @6640 has 18 MA's), (106, 6649), (139, 6718), (177, 6793), (198, 6853),

Gene: Untouchable_2 Start: 479, Stop: 808, Start Num: 73
Candidate Starts for Untouchable_2:
(Start: 73 @479 has 3 MA's), (105, 545), (175, 686), (185, 713), (190, 725),

Gene: ValleyTerrace_32 Start: 10373, Stop: 10723, Start Num: 79
Candidate Starts for ValleyTerrace_32:
(Start: 79 @10373 has 157 MA's), (Start: 101 @10421 has 2 MA's), (122, 10469), (141, 10514), (143, 10520), (160, 10556), (169, 10580), (202, 10691),

Gene: Vordorf_53 Start: 39065, Stop: 39475, Start Num: 60
Candidate Starts for Vordorf_53:
(12, 38624), (21, 38795), (38, 38936), (51, 39017), (53, 39023), (60, 39065), (82, 39131), (127, 39221), (136, 39242), (153, 39278),

Gene: Wally_31 Start: 9790, Stop: 10140, Start Num: 79
Candidate Starts for Wally_31:
(Start: 79 @9790 has 157 MA's), (Start: 101 @9838 has 2 MA's), (122, 9886), (141, 9931), (143, 9937), (160, 9973), (169, 9997), (202, 10108),

Gene: Whouxphf_100 Start: 54173, Stop: 54454, Start Num: 92
Candidate Starts for Whouxphf_100:
(16, 53762), (18, 53783), (20, 53804), (22, 53834), (Start: 92 @54173 has 39 MA's), (117, 54218), (124, 54236), (185, 54353),

Gene: Willis_32 Start: 10813, Stop: 11163, Start Num: 79
Candidate Starts for Willis_32:
(Start: 79 @10813 has 157 MA's), (Start: 101 @10861 has 2 MA's), (122, 10909), (141, 10954), (143, 10960), (160, 10996), (169, 11020), (202, 11131),

Gene: Wojtek_85 Start: 64679, Stop: 65014, Start Num: 78
Candidate Starts for Wojtek_85:
(Start: 78 @64679 has 2 MA's), (81, 64688), (84, 64697), (Start: 89 @64706 has 11 MA's), (117, 64754), (185, 64907), (194, 64931), (204, 65000),

Gene: Xenomorph_69 Start: 44753, Stop: 45061, Start Num: 97
Candidate Starts for Xenomorph_69:
(Start: 97 @44753 has 18 MA's), (144, 44855), (161, 44891), (183, 44954), (195, 44984),

Gene: Xerxes_55 Start: 36284, Stop: 36682, Start Num: 62
Candidate Starts for Xerxes_55:
(Start: 46 @36194 has 5 MA's), (53, 36230), (Start: 62 @36284 has 4 MA's), (128, 36437), (129, 36440), (142, 36467), (185, 36578), (187, 36584), (204, 36671),

Gene: Yassified_29 Start: 9570, Stop: 9920, Start Num: 79
Candidate Starts for Yassified_29:
(Start: 79 @9570 has 157 MA's), (Start: 101 @9618 has 2 MA's), (122, 9666), (141, 9711), (143, 9717), (160, 9753), (169, 9777), (202, 9888),

Gene: YemiJoy2021_33 Start: 10918, Stop: 11268, Start Num: 79
Candidate Starts for YemiJoy2021_33:
(Start: 79 @10918 has 157 MA's), (Start: 101 @10966 has 2 MA's), (122, 11014), (141, 11059), (143, 11065), (160, 11101), (169, 11125), (202, 11236),

Gene: Yorick_92 Start: 54408, Stop: 54689, Start Num: 92

Candidate Starts for Yorick_92:

(16, 53997), (18, 54018), (20, 54039), (22, 54069), (Start: 92 @54408 has 39 MA's), (117, 54453), (124, 54471), (185, 54588),

Gene: YoungMoneyMata_32 Start: 10124, Stop: 10474, Start Num: 79

Candidate Starts for YoungMoneyMata_32:

(Start: 79 @10124 has 157 MA's), (Start: 101 @10172 has 2 MA's), (122, 10220), (141, 10265), (143, 10271), (160, 10307), (169, 10331), (202, 10442),

Gene: Yucca_32 Start: 10840, Stop: 11190, Start Num: 79

Candidate Starts for Yucca_32:

(Start: 79 @10840 has 157 MA's), (Start: 101 @10888 has 2 MA's), (122, 10936), (141, 10981), (143, 10987), (160, 11023), (169, 11047), (202, 11158),

Gene: Yvonnetastic_136 Start: 75890, Stop: 76258, Start Num: 75

Candidate Starts for Yvonnetastic_136:

(Start: 75 @75890 has 3 MA's), (Start: 85 @75920 has 1 MA's), (Start: 97 @75935 has 18 MA's), (100, 75941), (108, 75965), (129, 76016), (183, 76136), (185, 76139), (194, 76163), (207, 76244),

Gene: Zalkecks_34 Start: 10922, Stop: 11272, Start Num: 79

Candidate Starts for Zalkecks_34:

(Start: 79 @10922 has 157 MA's), (Start: 101 @10970 has 2 MA's), (122, 11018), (141, 11063), (143, 11069), (160, 11105), (169, 11129), (202, 11240),

Gene: Zeenon_34 Start: 10904, Stop: 11254, Start Num: 79

Candidate Starts for Zeenon_34:

(Start: 79 @10904 has 157 MA's), (Start: 101 @10952 has 2 MA's), (122, 11000), (141, 11045), (143, 11051), (160, 11087), (169, 11111), (202, 11222),

Gene: Zizzle_99 Start: 55058, Stop: 55339, Start Num: 92

Candidate Starts for Zizzle_99:

(16, 54647), (18, 54668), (20, 54689), (22, 54719), (Start: 92 @55058 has 39 MA's), (117, 55103), (124, 55121), (185, 55238), (198, 55274),

Gene: ZygoTaiga_32 Start: 10918, Stop: 11268, Start Num: 79

Candidate Starts for ZygoTaiga_32:

(Start: 79 @10918 has 157 MA's), (Start: 101 @10966 has 2 MA's), (122, 11014), (141, 11059), (143, 11065), (160, 11101), (169, 11125), (202, 11236),