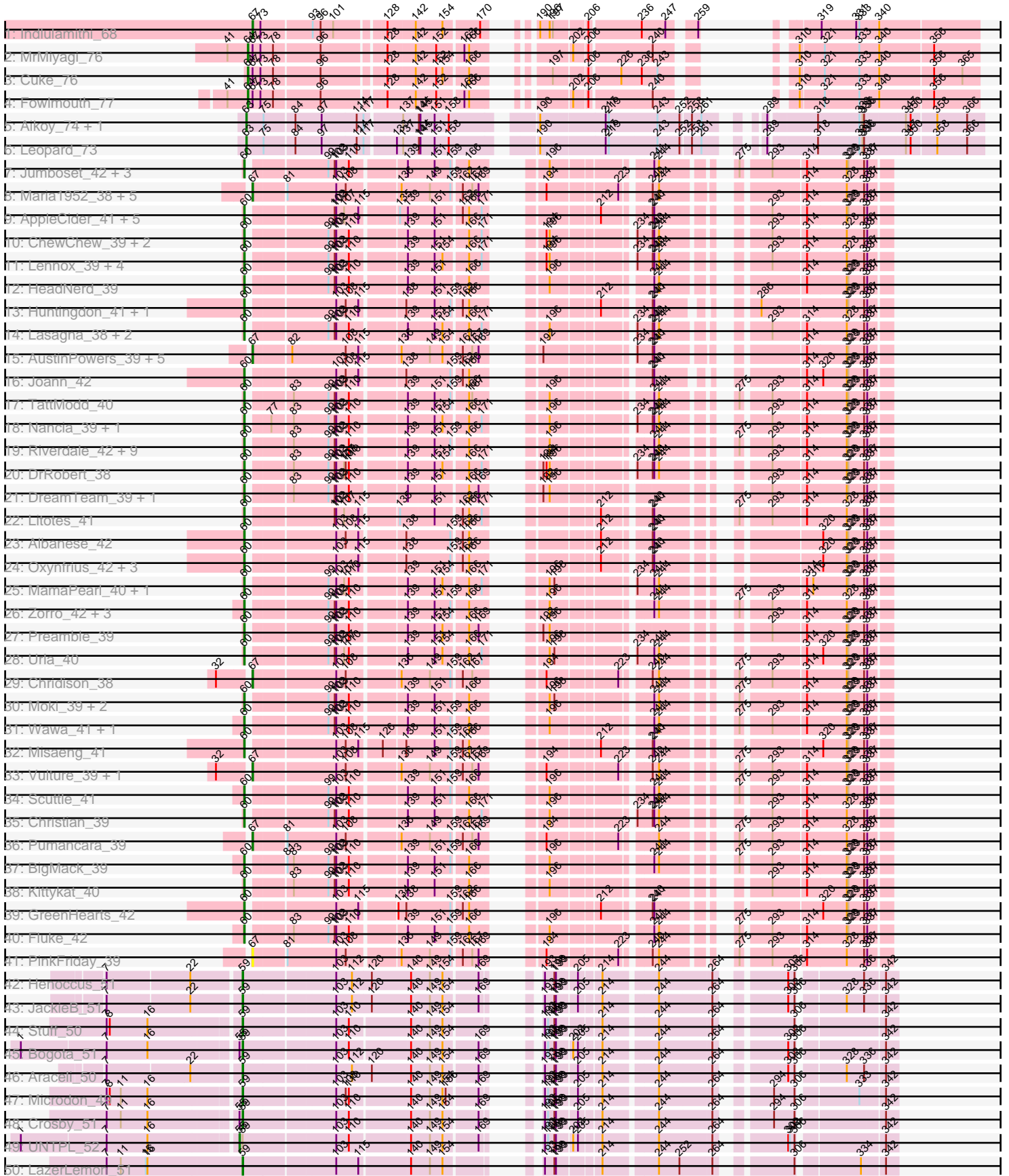
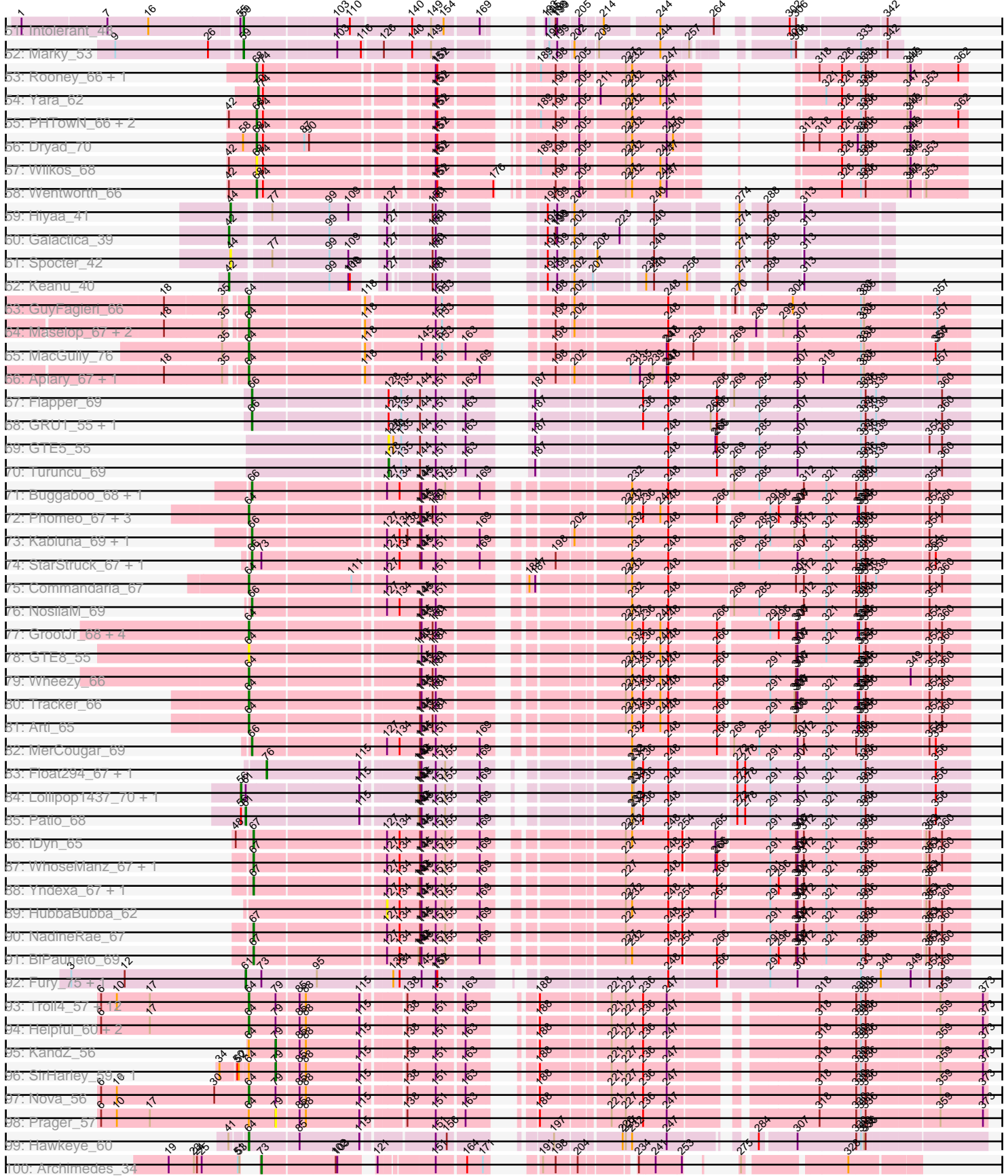


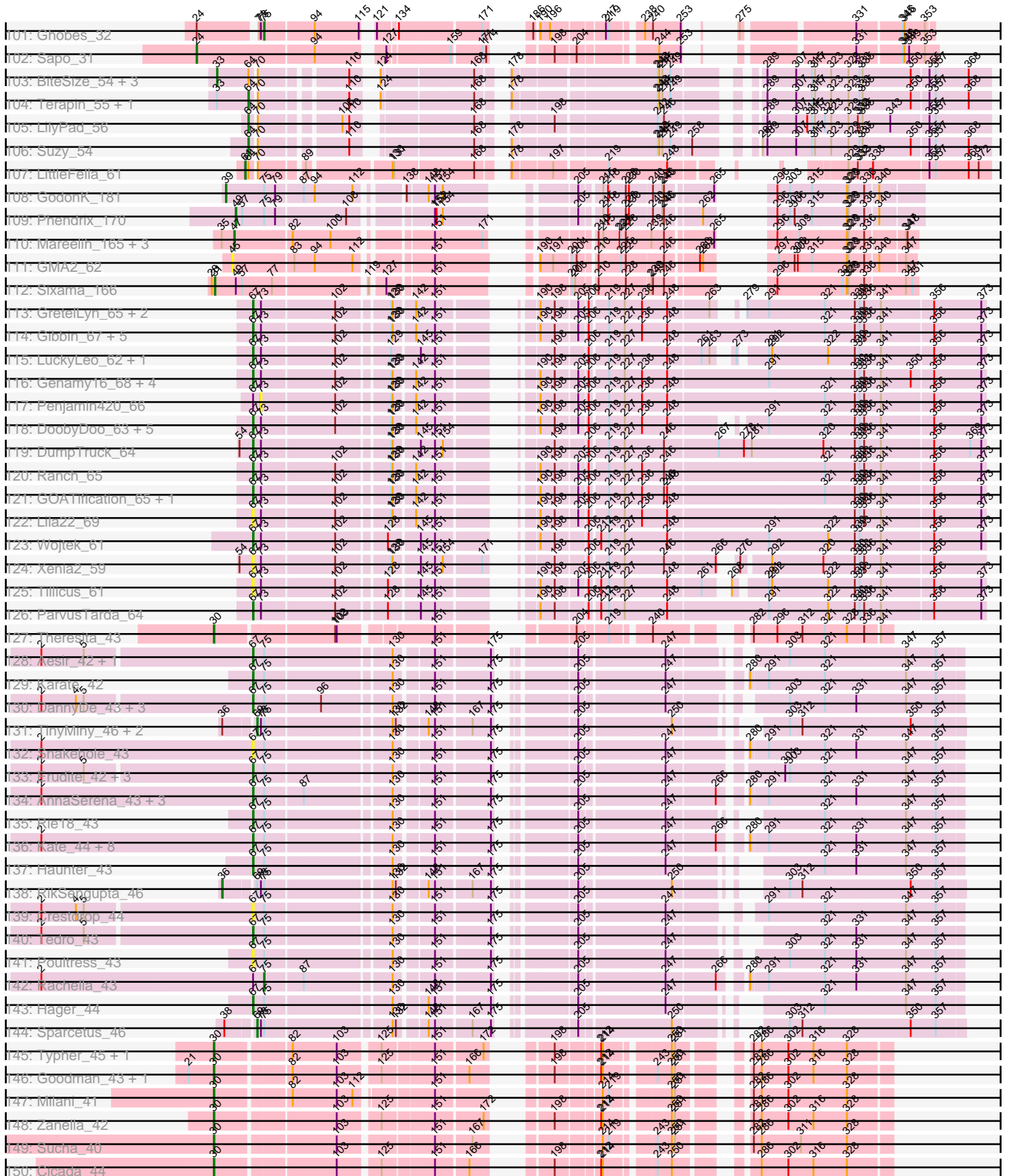
Pham 157511



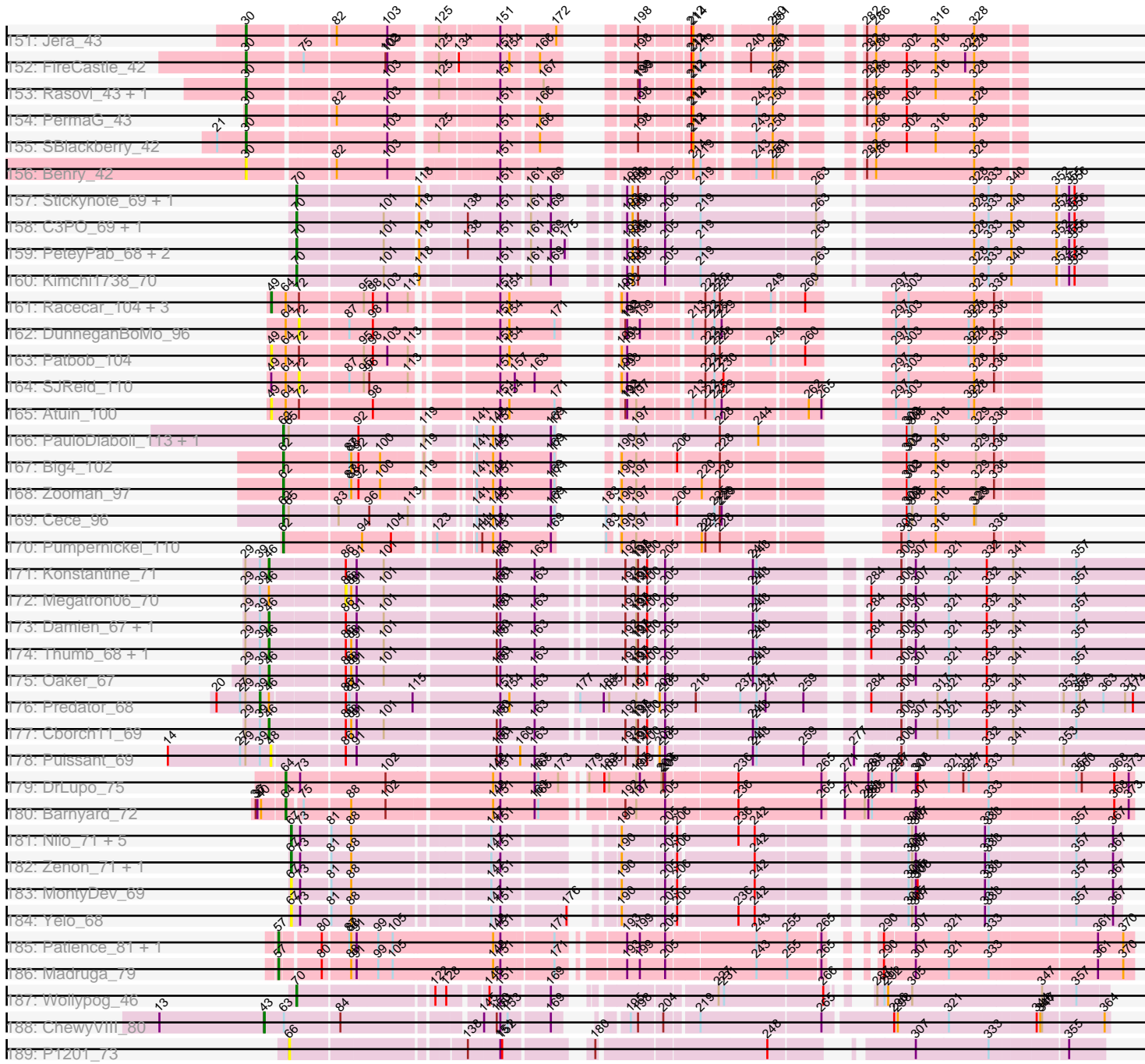
Pham 157511



Pham 157511



Pham 157511



Note: Tracks are now grouped by subcluster and scaled. Switching in subcluster is indicated by changes in track color. Track scale is now set by default to display the region 30 bp upstream of start 1 to 30 bp downstream of the last possible start. If this default region is judged to be packed too tightly with annotated starts, the track will be further scaled to only show that region of the ORF with annotated starts. This action will be indicated by adding "Zoomed" to the title. For starts, yellow indicates the location of called starts comprised solely of Glimmer/GeneMark auto-annotations, green indicates the location of called starts with at least 1 manual gene annotation.

Pham 157511 Report

This analysis was run 04/13/24 on database version 558.

Pham number 157511 has 341 members, 46 are drafts.

Phages represented in each track:

- Track 1 : Indlulamithi_68
- Track 2 : MrMiyagi_76
- Track 3 : Cuke_76
- Track 4 : Fowlmouth_77
- Track 5 : Aikoy_74, Onyinye_74
- Track 6 : Leopard_73
- Track 7 : Jumboset_42, MrGloopy_42, Glenn_42, Savage2526_42
- Track 8 : Maria1952_38, Daiboju_39, Herb_39, Temper16_39, KingBob_39, Sergei_39
- Track 9 : AppleCider_41, CallieOMalley_41, Suppi_41, Wayne_41, PartyCup_44, Canowicakte_41
- Track 10 : ChewChew_39, LilStuart_39, CristinaYang_39
- Track 11 : Lennox_39, PitaDog_39, WonderBoy_38, Lucy_39, Makoto_39
- Track 12 : HeadNerd_39
- Track 13 : Huntingdon_41, RcigaStruga_41
- Track 14 : Lasagna_38, OurGirlNessie_38, Pterodactyl_39
- Track 15 : AustinPowers_39, Supakev_39, Eunoia_39, Aledel_39, OMalley_39, Riovina_39
- Track 16 : Joann_42
- Track 17 : TattModd_40
- Track 18 : Nancia_39, Bodacious_39
- Track 19 : Riverdale_42, Beethoven_41, Vallejo_42, Immaculata_41, Potatoes_41, Kalizoi_42, Carpal_41, Cholula_41, BrotherBLo_41, Rozby_41
- Track 20 : DrRobert_38
- Track 21 : DreamTeam_39, Gisselle_39
- Track 22 : Litotes_41
- Track 23 : Albanese_42
- Track 24 : Oxynfrius_42, Nubia_42, Greenhouse_43, Lakshmi_42
- Track 25 : MamaPearl_40, EstebanJulior_40
- Track 26 : Zorro_42, Dino_42, MeganNoll_41, RAP15_42
- Track 27 : Preamble_39
- Track 28 : Urla_40
- Track 29 : Chridison_38
- Track 30 : Moki_39, Bennie_39, Huckleberry_39
- Track 31 : Wawa_41, Korra_41
- Track 32 : Misaeng_41
- Track 33 : Vulture_39, HunterDalle_39

- Track 34 : Scuttle_41
- Track 35 : Christian_39
- Track 36 : Pumancara_39
- Track 37 : BigMack_39
- Track 38 : Kittykat_40
- Track 39 : GreenHearts_42
- Track 40 : Fluke_42
- Track 41 : PinkFriday_39
- Track 42 : Henoccus_51
- Track 43 : JackieB_51
- Track 44 : Stuff_50
- Track 45 : Bogota_51
- Track 46 : Araceli_50
- Track 47 : Microdon_49
- Track 48 : Crosby_51
- Track 49 : UNTPL_52
- Track 50 : LazerLemon_51
- Track 51 : Intolerant_48
- Track 52 : Marky_53
- Track 53 : Rooney_66, Gibson_66
- Track 54 : Yara_62
- Track 55 : PHTowN_66, ShakeNBake_66, Lizz_66
- Track 56 : Dryad_70
- Track 57 : Wilkos_68
- Track 58 : Wentworth_66
- Track 59 : Hiyaa_41
- Track 60 : Galactica_39
- Track 61 : Spocter_42
- Track 62 : Keanu_40
- Track 63 : GuyFagieri_66
- Track 64 : Maselop_67, CoffeeBean_68, Braxoaddie_67
- Track 65 : MacGully_76
- Track 66 : Apiary_67, Polyuyuki_67
- Track 67 : Flapper_69
- Track 68 : GRU1_55, Dalilpop_70
- Track 69 : GTE5_55
- Track 70 : Turuncu_69
- Track 71 : Buggaboo_68, SuperSulley_68
- Track 72 : Phomeo_67, Foxboro_67, Jifall16_66, KidneyBean_67
- Track 73 : Kabluna_69, Bonum_70
- Track 74 : StarStruck_67, Outis_67
- Track 75 : Commandaria_67
- Track 76 : NosilaM_69
- Track 77 : GrootJr_68, NovumRegina_66, Emianna_66, NatB6_66, Kurt_66
- Track 78 : GTE8_55
- Track 79 : Wheezy_66
- Track 80 : Tracker_66
- Track 81 : Arti_65
- Track 82 : MerCougar_69
- Track 83 : Float294_67, Skysand_68
- Track 84 : Lollipop1437_70, Ennea_73
- Track 85 : Patio_68
- Track 86 : IDyn_65

- Track 87 : WhoseManz_67, Marietta_68
- Track 88 : Yndexa_67, Sukkupi_67
- Track 89 : HubbaBubba_62
- Track 90 : NadineRae_67
- Track 91 : BiPauneto_69
- Track 92 : Fury_75, Pleakley_75
- Track 93 : Troll4_57, BigMama_55, WaldoWhy_59, Chill_59, Erk16_56, Butterscotch_56, PBI1_54, Visconti_58, Giuseppe_58, Mopey_58, Adjutor_56, Thoth_57, Delton_58
- Track 94 : Helpful_60, Penelope2018_57, PLOT_57
- Track 95 : KandZ_56
- Track 96 : SirHarley_59, Gumball_57
- Track 97 : Nova_56
- Track 98 : Prager_57
- Track 99 : Hawkeye_60
- Track 100 : Archimedes_34
- Track 101 : Ghobes_32
- Track 102 : Sapo_31
- Track 103 : BiteSize_54, Sienna_54, Beyoncage_54, Madi_54
- Track 104 : Terapin_55, Djokovic_54
- Track 105 : LilyPad_56
- Track 106 : Suzy_54
- Track 107 : LittleFella_61
- Track 108 : GodonK_181
- Track 109 : Phendrix_170
- Track 110 : Mareelih_165, Forza_168, Boopy_167, BlueNGold_164
- Track 111 : GMA2_62
- Track 112 : Sixama_166
- Track 113 : GretelLyn_65, Yikes_67, Sadboi_66
- Track 114 : Gibbin_67, Patos_69, NorManre_69, BirthdayBoy_67, Lambo_63, OtterstedtS21_65
- Track 115 : LuckyLeo_62, Apeppi_59
- Track 116 : Genamy16_68, NovaSharks_67, Rumi_66, Alyssamiracle_68, Avian_64
- Track 117 : Penjamin420_66
- Track 118 : DoobyDoo_63, Erutan_65, Zany_63, Jalebi_64, MoiGyank_71, Sampudon_65
- Track 119 : DumpTruck_64
- Track 120 : Ranch_65
- Track 121 : GOATification_65, Fulcrum_65
- Track 122 : Lila22_69
- Track 123 : Wojtek_61
- Track 124 : Xenia2_59
- Track 125 : Tillicus_61
- Track 126 : ParvusTarda_64
- Track 127 : Theresita_43
- Track 128 : Aesir_42, JDawG_42
- Track 129 : Karate_42
- Track 130 : DannyDe_43, Chivey_43, FreddieHg_43, Hiddenleaf_43
- Track 131 : TinyMiny_46, Ajin_47, Kors_47
- Track 132 : Snakehole_43
- Track 133 : Erudite_42, MortySmith_41, JingleBells_43, Dauntless_43
- Track 134 : AnnaSerena_43, Pharpay_43, Anakin_43, NarutoRun_43
- Track 135 : Rie18_43

- Track 136 : Kate_44, Krampus_43, CoolCookie_48, Cybele_43, Gilda_43, Neptune_43, Potty_43, PhunaPhoke_43, OverHedge_44
- Track 137 : Haunter_43
- Track 138 : RikSengupta_46
- Track 139 : Crestdrop_44
- Track 140 : Tedro_43
- Track 141 : Poultruss_43
- Track 142 : Rachella_43
- Track 143 : Hager_44
- Track 144 : Sparcetus_46
- Track 145 : Typher_45, TurboVicky_43
- Track 146 : Goodman_43, Johann_43
- Track 147 : Milani_41
- Track 148 : Zanella_42
- Track 149 : Sucha_40
- Track 150 : Cicada_44
- Track 151 : Jera_43
- Track 152 : FireCastle_42
- Track 153 : Rasovi_43, Htur_43
- Track 154 : PermaG_43
- Track 155 : SBlackberry_42
- Track 156 : Benry_42
- Track 157 : Stickynote_69, Darwin_70
- Track 158 : C3PO_69, Cruella_69
- Track 159 : PeteyPab_68, PotatoChip_69, Zion_69
- Track 160 : Kimchi1738_70
- Track 161 : Racecar_104, Bloom_107, Mimi_109, Talia1610_105
- Track 162 : DunneganBoMo_96
- Track 163 : Patbob_104
- Track 164 : SJReid_110
- Track 165 : Atuin_100
- Track 166 : PauloDiaboli_113, A3Wally_113
- Track 167 : Big4_102
- Track 168 : Zooman_97
- Track 169 : Cece_96
- Track 170 : Pumpernickel_110
- Track 171 : Konstantine_71
- Track 172 : Megatron06_70
- Track 173 : Damien_67, Beckerton_66
- Track 174 : Thumb_68, Phreeze_66
- Track 175 : Oaker_67
- Track 176 : Predator_68
- Track 177 : Cborch11_69
- Track 178 : Puissant_69
- Track 179 : DrLupo_75
- Track 180 : Barnyard_72
- Track 181 : Nilo_71, Riparian_71, Papyrus_69, Rope_69, Weiss13_69, Candle_67
- Track 182 : Zenon_71, Send513_69
- Track 183 : MontyDev_69
- Track 184 : Yelo_68
- Track 185 : Patience_81, Labelle_80
- Track 186 : Madruga_79
- Track 187 : Wollypog_46

- Track 188 : ChewyVIII_80
- Track 189 : P1201_73

Summary of Final Annotations (See graph section above for start numbers):

The start number called the most often in the published annotations is 67, it was called in 78 of the 295 non-draft genes in the pham.

Genes that call this "Most Annotated" start:

- Aesir_42, Aledel_39, Alyssamiracle_68, Anakin_43, AnnaSerena_43, Apeppi_59, AustinPowers_39, Avian_64, BiPauneto_69, BirthdayBoy_67, Candle_67, Chivey_43, Chridison_38, CoolCookie_48, Crestdrop_44, Cybele_43, Daiboju_39, DannyDe_43, Dauntless_43, DoobyDoo_63, DumpTruck_64, Erudite_42, Erutan_65, Eunoia_39, FreddieHg_43, Fulcrum_65, GOATification_65, Genamy16_68, Gibbin_67, Gilda_43, GretelLyn_65, Hager_44, Haunter_43, Herb_39, Hiddenleaf_43, HunterDalle_39, IDyn_65, Indlulamithi_68, JDawG_42, Jalebi_64, JingleBells_43, Karate_42, Kate_44, KingBob_39, Krampus_43, Lambo_63, Lila22_69, LuckyLeo_62, Maria1952_38, Marietta_68, MoiGyank_71, MontyDev_69, MortySmith_41, NadineRae_67, NarutoRun_43, Neptune_43, Nilo_71, NorManre_69, NovaSharks_67, OMalley_39, OtterstedtS21_65, OverHedge_44, Papyrus_69, ParvusTarda_64, Patos_69, Pharpay_43, PhunaPhoke_43, PinkFriday_39, Potty_43, Poultruss_43, Pumancara_39, Ranch_65, Rie18_43, Riovina_39, Riparian_71, Rope_69, Rumi_66, Sadboi_66, Sampudon_65, Send513_69, Sergei_39, Snakehole_43, Sukkupi_67, Supakev_39, Tedro_43, Temper16_39, Tillicus_61, Vulture_39, Weiss13_69, WhoseManz_67, Wojtek_61, Xenia2_59, Yelo_68, Yikes_67, Yndexa_67, Zany_63, Zenon_71,

Genes that have the "Most Annotated" start but do not call it:

- Cuke_76, Fowlmouth_77, MrMiyagi_76, Penjamin420_66, Rachella_43,

Genes that do not have the "Most Annotated" start:

- A3Wally_113, Adjutor_56, Aikoy_74, Ajin_47, Albanese_42, Apiary_67, AppleCider_41, Araceli_50, Archimedes_34, Arti_65, Atuin_100, Barnyard_72, Beckerton_66, Beethoven_41, Bennie_39, Benry_42, Beyoncage_54, Big4_102, BigMack_39, BigMama_55, BiteSize_54, Bloom_107, BlueNGold_164, Bodacious_39, Bogota_51, Bonum_70, Boopy_167, Braxoaddie_67, BrotherBLo_41, Buggaboo_68, Butterscotch_56, C3PO_69, CallieOMalley_41, Canowicakte_41, Carpal_41, Cborch11_69, Cece_96, ChewChew_39, ChewyVIII_80, Chill_59, Cholula_41, Christian_39, Cicada_44, CoffeeBean_68, Commandaria_67, CristinaYang_39, Crosby_51, Cruella_69, Dalilpop_70, Damien_67, Darwin_70, Delton_58, Dino_42, Djokovic_54, DrLupo_75, DrRobert_38, DreamTeam_39, Dryad_70, DunneganBoMo_96, Emianna_66, Ennea_73, Erk16_56, EstebanJulior_40, FireCastle_42, Flapper_69, Float294_67, Fluke_42, Forza_168, Foxboro_67, Fury_75, GMA2_62, GRU1_55, GTE5_55, GTE8_55, Galactica_39, Ghobes_32, Gibson_66, Gisselle_39, Giuseppe_58, Glenn_42, GodonK_181, Goodman_43, GreenHearts_42, Greenhouse_43, GrootJr_68, Gumball_57, GuyFagieri_66, Hawkeye_60, HeadNerd_39, Helpful_60, Henoccus_51, Hiyaa_41, Htur_43, HubbaBubba_62, Huckleberry_39, Huntingdon_41, Immaculata_41, Intolerant_48, JackieB_51, Jera_43, Jifall16_66, Joann_42, Johann_43, Jumboset_42, Kabluna_69, Kalizoi_42, KandZ_56, Keanu_40, KidneyBean_67,

Kimchi1738_70, Kittykat_40, Konstantine_71, Korra_41, Kors_47, Kurt_66, Labelle_80, Lakshmi_42, Lasagna_38, LazerLemon_51, Lennox_39, Leopard_73, LilStuart_39, LilyPad_56, Litotes_41, LittleFella_61, Lizz_66, Lollipop1437_70, Lucy_39, MacGully_76, Madi_54, Madrugua_79, Makoto_39, MamaPearl_40, Mareelih_165, Marky_53, Maselop_67, MeganNoll_41, Megatron06_70, MerCougar_69, Microdon_49, Milani_41, Mimi_109, Misaeng_41, Moki_39, Mopey_58, MrGloopy_42, Nancia_39, NatB6_66, NosilaM_69, Nova_56, NovumRegina_66, Nubia_42, Oaker_67, Onyinye_74, OurGirlNessie_38, Outis_67, Oxynfrius_42, P1201_73, PBI1_54, PHTowN_66, PLOT_57, PartyCup_44, Patbob_104, Patience_81, Patio_68, PauloDiaboli_113, Penelope2018_57, PermaG_43, PeteyPab_68, Phendrix_170, Phomeo_67, Phreeze_66, PitaDog_39, Pleakley_75, Polyuyuki_67, PotatoChip_69, Potatoes_41, Prager_57, Preamble_39, Predator_68, Pterodactyl_39, Puissant_69, Pumpnickel_110, RAP15_42, Racecar_104, Rasovi_43, RcigaStruga_41, RikSengupta_46, Riverdale_42, Rooney_66, Rozby_41, SBlackberry_42, SJReid_110, Sapo_31, Savage2526_42, Scuttle_41, ShakeNBake_66, Sienna_54, SirHarley_59, Sixama_166, Skysand_68, Sparcetus_46, Spocter_42, StarStruck_67, Stickynote_69, Stuff_50, Sucha_40, SuperSulley_68, Suppi_41, Suzy_54, Talia1610_105, TattModd_40, Terapin_55, Theresita_43, Thoth_57, Thumb_68, TinyMiny_46, Tracker_66, Troll4_57, TurboVicky_43, Turuncu_69, Typher_45, UNTPL_52, Urla_40, Vallejo_42, Visconti_58, WaldoWhy_59, Wawa_41, Wayne_41, Wentworth_66, Wheezy_66, Wilkos_68, Wollypog_46, WonderBoy_38, Yara_62, Zanella_42, Zion_69, Zooman_97, Zorro_42,

Summary by start number:

Start 24:

- Found in 3 of 341 (0.9%) of genes in pham
- Manual Annotations of this start: 1 of 295
- Called 33.3% of time when present
- Phage (with cluster) where this start called: Sapo_31 (DA),

Start 30:

- Found in 17 of 341 (5.0%) of genes in pham
- Manual Annotations of this start: 14 of 295
- Called 94.1% of time when present
- Phage (with cluster) where this start called: Berry_42 (EJ), Cicada_44 (EJ), FireCastle_42 (EJ), Goodman_43 (EJ), Htur_43 (EJ), Jera_43 (EJ), Johann_43 (EJ), Milani_41 (EJ), PermaG_43 (EJ), Rasovi_43 (EJ), SBlackberry_42 (EJ), Sucha_40 (EJ), Theresita_43 (EA7), TurboVicky_43 (EJ), Typher_45 (EJ), Zanella_42 (EJ),

Start 31:

- Found in 1 of 341 (0.3%) of genes in pham
- Manual Annotations of this start: 1 of 295
- Called 100.0% of time when present
- Phage (with cluster) where this start called: Sixama_166 (DS),

Start 33:

- Found in 6 of 341 (1.8%) of genes in pham
- Manual Annotations of this start: 4 of 295
- Called 66.7% of time when present
- Phage (with cluster) where this start called: Beyoncage_54 (DG1), BiteSize_54 (DG1), Madi_54 (DG1), Sienna_54 (DG1),

Start 36:

- Found in 5 of 341 (1.5%) of genes in pham
- Manual Annotations of this start: 1 of 295
- Called 20.0% of time when present
- Phage (with cluster) where this start called: RikSengupta_46 (EF),

Start 39:

- Found in 11 of 341 (3.2%) of genes in pham
- Manual Annotations of this start: 2 of 295
- Called 18.2% of time when present
- Phage (with cluster) where this start called: GodonK_181 (DK), Predator_68 (H1),

Start 42:

- Found in 7 of 341 (2.1%) of genes in pham
- Manual Annotations of this start: 2 of 295
- Called 28.6% of time when present
- Phage (with cluster) where this start called: Galactica_39 (BQ), Keanu_40 (BQ),

Start 43:

- Found in 1 of 341 (0.3%) of genes in pham
- Manual Annotations of this start: 1 of 295
- Called 100.0% of time when present
- Phage (with cluster) where this start called: ChewyVIII_80 (singleton),

Start 44:

- Found in 2 of 341 (0.6%) of genes in pham
- Manual Annotations of this start: 1 of 295
- Called 100.0% of time when present
- Phage (with cluster) where this start called: Hiya_41 (BQ), Spocter_42 (BQ),

Start 45:

- Found in 1 of 341 (0.3%) of genes in pham
- No Manual Annotations of this start.
- Called 100.0% of time when present
- Phage (with cluster) where this start called: GMA2_62 (DS),

Start 46:

- Found in 9 of 341 (2.6%) of genes in pham
- Manual Annotations of this start: 7 of 295
- Called 77.8% of time when present
- Phage (with cluster) where this start called: Beckerton_66 (H1), Cborch11_69 (H1), Damien_67 (H1), Konstantine_71 (H1), Oaker_67 (H1), Phreeze_66 (H1), Thumb_68 (H1),

Start 47:

- Found in 4 of 341 (1.2%) of genes in pham
- Manual Annotations of this start: 4 of 295
- Called 100.0% of time when present
- Phage (with cluster) where this start called: BlueNGold_164 (DS), Boopy_167 (DS), Forza_168 (DS), Mareelih_165 (DS),

Start 48:

- Found in 2 of 341 (0.6%) of genes in pham
- No Manual Annotations of this start.
- Called 50.0% of time when present
- Phage (with cluster) where this start called: Puissant_69 (H1),

Start 49:

- Found in 9 of 341 (2.6%) of genes in pham
- Manual Annotations of this start: 2 of 295
- Called 77.8% of time when present
- Phage (with cluster) where this start called: Atuin_100 (FC), Bloom_107 (FC), Mimi_109 (FC), Patbob_104 (FC), Phendrix_170 (DK), Racecar_104 (FC), Talia1610_105 (FC),

Start 55:

- Found in 4 of 341 (1.2%) of genes in pham
- Manual Annotations of this start: 1 of 295
- Called 25.0% of time when present
- Phage (with cluster) where this start called: UNTPL_52 (BH),

Start 56:

- Found in 3 of 341 (0.9%) of genes in pham
- Manual Annotations of this start: 2 of 295
- Called 66.7% of time when present
- Phage (with cluster) where this start called: Ennea_73 (CR3), Lollipop1437_70 (CR3),

Start 57:

- Found in 5 of 341 (1.5%) of genes in pham
- Manual Annotations of this start: 3 of 295
- Called 60.0% of time when present
- Phage (with cluster) where this start called: Labelle_80 (U), Madruga_79 (U), Patience_81 (U),

Start 59:

- Found in 11 of 341 (3.2%) of genes in pham
- Manual Annotations of this start: 10 of 295
- Called 90.9% of time when present
- Phage (with cluster) where this start called: Araceli_50 (BH), Bogota_51 (BH), Crosby_51 (BH), Henoccus_51 (BH), Intolerant_48 (BH), JackieB_51 (BH), LazerLemon_51 (BH), Marky_53 (BH), Microdon_49 (BH), Stuff_50 (BH),

Start 60:

- Found in 67 of 341 (19.6%) of genes in pham
- Manual Annotations of this start: 65 of 295
- Called 100.0% of time when present
- Phage (with cluster) where this start called: Albanese_42 (AK), AppleCider_41 (AK), Beethoven_41 (AK), Bennie_39 (AK), BigMack_39 (AK), Bodacious_39 (AK), BrotherBLo_41 (AK), CallieOMalley_41 (AK), Canowicakte_41 (AK), Carpal_41 (AK), ChewChew_39 (AK), Cholula_41 (AK), Christian_39 (AK), CristinaYang_39 (AK), Dino_42 (AK), DrRobert_38 (AK), DreamTeam_39 (AK), EstebanJulior_40 (AK), Fluke_42 (AK), Gisselle_39 (AK), Glenn_42 (AK), GreenHearts_42 (AK), Greenhouse_43 (AK), HeadNerd_39 (AK), Huckleberry_39 (AK), Huntingdon_41 (AK), Immaculata_41 (AK), Joann_42 (AK), Jumboset_42 (AK), Kalizoi_42 (AK),

Kittykat_40 (AK), Korra_41 (AK), Lakshmi_42 (AK), Lasagna_38 (AK), Lennox_39 (AK), LilStuart_39 (AK), Litotes_41 (AK), Lucy_39 (AK), Makoto_39 (AK), MamaPearl_40 (AK), MeganNoll_41 (AK), Misaeng_41 (AK), Moki_39 (AK), MrGloopy_42 (AK), Nancia_39 (AK), Nubia_42 (AK), OurGirlNessie_38 (AK), Oxyfrius_42 (AK), PartyCup_44 (AK), PitaDog_39 (AK), Potatoes_41 (AK), Preamble_39 (AK), Pterodactyl_39 (AK), RAP15_42 (AK), RcigaStruga_41 (AK), Riverdale_42 (AK), Rozby_41 (AK), Savage2526_42 (AK), Scuttle_41 (AK), Suppi_41 (AK), TattModd_40 (AK), Urla_40 (AK), Vallejo_42 (AK), Wawa_41 (AK), Wayne_41 (AK), WonderBoy_38 (AK), Zorro_42 (AK),

Start 61:

- Found in 6 of 341 (1.8%) of genes in pham
- Manual Annotations of this start: 4 of 295
- Called 66.7% of time when present
- Phage (with cluster) where this start called: Fury_75 (CR5), LittleFella_61 (DG2), Patio_68 (CR3), Pleakley_75 (CR5),

Start 62:

- Found in 6 of 341 (1.8%) of genes in pham
- Manual Annotations of this start: 6 of 295
- Called 100.0% of time when present
- Phage (with cluster) where this start called: A3Wally_113 (GD1), Big4_102 (GD2), Cece_96 (GD3), PauloDiaboli_113 (GD1), Pumpernickel_110 (GD4), Zooman_97 (GD2),

Start 63:

- Found in 4 of 341 (1.2%) of genes in pham
- Manual Annotations of this start: 3 of 295
- Called 75.0% of time when present
- Phage (with cluster) where this start called: Aikoy_74 (AE), Leopard_73 (AE), Onyinye_74 (AE),

Start 64:

- Found in 65 of 341 (19.1%) of genes in pham
- Manual Annotations of this start: 45 of 295
- Called 73.8% of time when present
- Phage (with cluster) where this start called: Adjutor_56 (D1), Apiary_67 (CR), Arti_65 (CR2), Barnyard_72 (H2), BigMama_55 (D1), Braxoaddie_67 (CR), Butterscotch_56 (D1), Chill_59 (D1), CoffeeBean_68 (CR), Commandaria_67 (CR2), Cuke_76 (AC), Delton_58 (D1), Djokovic_54 (DG1), DrLupo_75 (H2), Emianna_66 (CR2), Erk16_56 (D1), Fowlmouth_77 (AC), Foxboro_67 (CR2), GTE8_55 (CR2), Giuseppe_58 (D1), GrootJr_68 (CR2), GuyFagieri_66 (CR), Hawkeye_60 (D2), Helpful_60 (D1), Jifall16_66 (CR2), KidneyBean_67 (CR2), Kurt_66 (CR2), LilyPad_56 (DG1), MacGully_76 (CR), Maselop_67 (CR), Mopey_58 (D1), MrMiyagi_76 (AC), NatB6_66 (CR2), Nova_56 (D1), NovumRegina_66 (CR2), PBI1_54 (D1), PLOT_57 (D1), Penelope2018_57 (D1), Phomeo_67 (CR2), Polyyuki_67 (CR), Suzy_54 (DG1), Terapin_55 (DG1), Thoth_57 (D1), Tracker_66 (CR2), Troll4_57 (D1), Visconti_58 (D1), WaldoWhy_59 (D1), Wheezy_66 (CR2),

Start 66:

- Found in 12 of 341 (3.5%) of genes in pham
- Manual Annotations of this start: 10 of 295
- Called 100.0% of time when present

- Phage (with cluster) where this start called: Bonum_70 (CR2), Buggaboo_68 (CR2), Dalilpop_70 (CR1), Flapper_69 (CR1), GRU1_55 (CR1), Kabluna_69 (CR2), MerCougar_69 (CR2), NosilaM_69 (CR2), Outis_67 (CR2), P1201_73 (singleton), StarStruck_67 (CR2), SuperSulley_68 (CR2),

Start 67:

- Found in 102 of 341 (29.9%) of genes in pham
- Manual Annotations of this start: 78 of 295
- Called 95.1% of time when present
- Phage (with cluster) where this start called: Aesir_42 (EF), Aledel_39 (AK), Alyssamiracle_68 (DV), Anakin_43 (EF), AnnaSerena_43 (EF), Apeppi_59 (DV), AustinPowers_39 (AK), Avian_64 (DV), BiPauneto_69 (CR4), BirthdayBoy_67 (DV), Candle_67 (R), Chivey_43 (EF), Chridison_38 (AK), CoolCookie_48 (EF), Crestdrop_44 (EF), Cybele_43 (EF), Daiboju_39 (AK), DannyDe_43 (EF), Dauntless_43 (EF), DoobyDoo_63 (DV), DumpTruck_64 (DV), Erudite_42 (EF), Erutan_65 (DV), Eunoia_39 (AK), FreddieHg_43 (EF), Fulcrum_65 (DV), GOATification_65 (DV), Genamy16_68 (DV), Gibbin_67 (DV), Gilda_43 (EF), GretelLyn_65 (DV), Hager_44 (EF), Haunter_43 (EF), Herb_39 (AK), Hiddenleaf_43 (EF), HunterDalle_39 (AK), IDyn_65 (CR4), Indlulamithi_68 (AC), JDawG_42 (EF), Jalebi_64 (DV), JingleBells_43 (EF), Karate_42 (EF), Kate_44 (EF), KingBob_39 (AK), Krampus_43 (EF), Lambo_63 (DV), Lila22_69 (DV), LuckyLeo_62 (DV), Maria1952_38 (AK), Marietta_68 (CR4), MoiGyank_71 (DV), MontyDev_69 (R), MortySmith_41 (EF), NadineRae_67 (CR4), NarutoRun_43 (EF), Neptune_43 (EF), Nilo_71 (R), NorManre_69 (DV), NovaSharks_67 (DV), OMalley_39 (AK), OtterstedtS21_65 (DV), OverHedge_44 (EF), Papyrus_69 (R), ParvusTarda_64 (DV), Patos_69 (DV), Pharpay_43 (EF), PhunaPhoke_43 (EF), PinkFriday_39 (AK), Potty_43 (EF), Poultruss_43 (EF), Pumancara_39 (AK), Ranch_65 (DV), Rie18_43 (EF), Riovina_39 (AK), Riparian_71 (R), Rope_69 (R), Rumi_66 (DV), Sadboi_66 (DV), Sampudon_65 (DV), Send513_69 (R), Sergei_39 (AK), Snakehole_43 (EF), Sukkupi_67 (CR4), Supakev_39 (AK), Tedro_43 (EF), Temper16_39 (AK), Tillicus_61 (DV), Vulture_39 (AK), Weiss13_69 (R), WhoseManz_67 (CR4), Wojtek_61 (DV), Xenia2_59 (DV), Yelo_68 (R), Yikes_67 (DV), Yndexa_67 (CR4), Zany_63 (DV), Zenon_71 (R),

Start 68:

- Found in 8 of 341 (2.3%) of genes in pham
- Manual Annotations of this start: 7 of 295
- Called 100.0% of time when present
- Phage (with cluster) where this start called: Dryad_70 (BN), Gibson_66 (BN), Lizz_66 (BN), PHTowN_66 (BN), Rooney_66 (BN), ShakeNBake_66 (BN), Wentworth_66 (BN), Wilkos_68 (BN),

Start 69:

- Found in 5 of 341 (1.5%) of genes in pham
- Manual Annotations of this start: 2 of 295
- Called 80.0% of time when present
- Phage (with cluster) where this start called: Ajin_47 (EF), Kors_47 (EF), Sparcetus_46 (EF), TinyMiny_46 (EF),

Start 70:

- Found in 19 of 341 (5.6%) of genes in pham
- Manual Annotations of this start: 10 of 295
- Called 52.6% of time when present

- Phage (with cluster) where this start called: C3PO_69 (EN), Cruella_69 (EN), Darwin_70 (EN), Kimchi1738_70 (EN), PeteyPab_68 (EN), PotatoChip_69 (EN), Stickynote_69 (EN), Wollypog_46 (singleton), Yara_62 (BN), Zion_69 (EN),

Start 72:

- Found in 8 of 341 (2.3%) of genes in pham
- No Manual Annotations of this start.
- Called 25.0% of time when present
- Phage (with cluster) where this start called: DunneganBoMo_96 (FC), SJReid_110 (FC),

Start 73:

- Found in 58 of 341 (17.0%) of genes in pham
- Manual Annotations of this start: 1 of 295
- Called 3.4% of time when present
- Phage (with cluster) where this start called: Archimedes_34 (DA), Penjamin420_66 (DV),

Start 75:

- Found in 45 of 341 (13.2%) of genes in pham
- Manual Annotations of this start: 2 of 295
- Called 4.4% of time when present
- Phage (with cluster) where this start called: Ghobes_32 (DA), Rachella_43 (EF),

Start 76:

- Found in 2 of 341 (0.6%) of genes in pham
- Manual Annotations of this start: 2 of 295
- Called 100.0% of time when present
- Phage (with cluster) where this start called: Float294_67 (CR3), Skysand_68 (CR3),

Start 79:

- Found in 23 of 341 (6.7%) of genes in pham
- Manual Annotations of this start: 3 of 295
- Called 17.4% of time when present
- Phage (with cluster) where this start called: Gumball_57 (D1), KandZ_56 (D1), Prager_57 (D1), SirHarley_59 (D1),

Start 86:

- Found in 10 of 341 (2.9%) of genes in pham
- No Manual Annotations of this start.
- Called 10.0% of time when present
- Phage (with cluster) where this start called: Megatron06_70 (H1),

Start 127:

- Found in 23 of 341 (6.7%) of genes in pham
- No Manual Annotations of this start.
- Called 4.3% of time when present
- Phage (with cluster) where this start called: HubbaBubba_62 (CR4),

Start 128:

- Found in 13 of 341 (3.8%) of genes in pham
- Manual Annotations of this start: 1 of 295
- Called 15.4% of time when present

- Phage (with cluster) where this start called: GTE5_55 (CR1), Turuncu_69 (CR1),

Summary by clusters:

There are 34 clusters represented in this pham: GD1, singleton, GD3, GD4, DK, BN, BH, GD2, DA, FC, BQ, DV, DS, AC, EN, AE, EJ, AK, EF, DG2, DG1, U, CR, EA7, CR2, CR3, CR1, CR4, CR5, H2, H1, R, D2, D1,

Info for manual annotations of cluster AC:

- Start number 64 was manually annotated 3 times for cluster AC.
- Start number 67 was manually annotated 1 time for cluster AC.

Info for manual annotations of cluster AE:

- Start number 63 was manually annotated 3 times for cluster AE.

Info for manual annotations of cluster AK:

- Start number 60 was manually annotated 65 times for cluster AK.
- Start number 67 was manually annotated 15 times for cluster AK.

Info for manual annotations of cluster BH:

- Start number 55 was manually annotated 1 time for cluster BH.
- Start number 59 was manually annotated 10 times for cluster BH.

Info for manual annotations of cluster BN:

- Start number 68 was manually annotated 7 times for cluster BN.
- Start number 70 was manually annotated 1 time for cluster BN.

Info for manual annotations of cluster BQ:

- Start number 42 was manually annotated 2 times for cluster BQ.
- Start number 44 was manually annotated 1 time for cluster BQ.

Info for manual annotations of cluster CR:

- Start number 64 was manually annotated 6 times for cluster CR.

Info for manual annotations of cluster CR1:

- Start number 66 was manually annotated 2 times for cluster CR1.
- Start number 128 was manually annotated 1 time for cluster CR1.

Info for manual annotations of cluster CR2:

- Start number 64 was manually annotated 12 times for cluster CR2.
- Start number 66 was manually annotated 8 times for cluster CR2.

Info for manual annotations of cluster CR3:

- Start number 56 was manually annotated 2 times for cluster CR3.
- Start number 61 was manually annotated 1 time for cluster CR3.
- Start number 76 was manually annotated 2 times for cluster CR3.

Info for manual annotations of cluster CR4:

- Start number 67 was manually annotated 7 times for cluster CR4.

Info for manual annotations of cluster CR5:

- Start number 61 was manually annotated 2 times for cluster CR5.

Info for manual annotations of cluster D1:

- Start number 64 was manually annotated 17 times for cluster D1.
- Start number 79 was manually annotated 3 times for cluster D1.

Info for manual annotations of cluster D2:

- Start number 64 was manually annotated 1 time for cluster D2.

Info for manual annotations of cluster DA:

- Start number 24 was manually annotated 1 time for cluster DA.
- Start number 73 was manually annotated 1 time for cluster DA.
- Start number 75 was manually annotated 1 time for cluster DA.

Info for manual annotations of cluster DG1:

- Start number 33 was manually annotated 4 times for cluster DG1.
- Start number 64 was manually annotated 4 times for cluster DG1.

Info for manual annotations of cluster DG2:

- Start number 61 was manually annotated 1 time for cluster DG2.

Info for manual annotations of cluster DK:

- Start number 39 was manually annotated 1 time for cluster DK.
- Start number 49 was manually annotated 1 time for cluster DK.

Info for manual annotations of cluster DS:

- Start number 31 was manually annotated 1 time for cluster DS.
- Start number 47 was manually annotated 4 times for cluster DS.

Info for manual annotations of cluster DV:

- Start number 67 was manually annotated 24 times for cluster DV.

Info for manual annotations of cluster EA7:

- Start number 30 was manually annotated 1 time for cluster EA7.

Info for manual annotations of cluster EF:

- Start number 36 was manually annotated 1 time for cluster EF.
- Start number 67 was manually annotated 23 times for cluster EF.
- Start number 69 was manually annotated 2 times for cluster EF.
- Start number 75 was manually annotated 1 time for cluster EF.

Info for manual annotations of cluster EJ:

- Start number 30 was manually annotated 13 times for cluster EJ.

Info for manual annotations of cluster EN:

- Start number 70 was manually annotated 8 times for cluster EN.

Info for manual annotations of cluster FC:

- Start number 49 was manually annotated 1 time for cluster FC.

Info for manual annotations of cluster GD1:

- Start number 62 was manually annotated 2 times for cluster GD1.

Info for manual annotations of cluster GD2:

- Start number 62 was manually annotated 2 times for cluster GD2.

Info for manual annotations of cluster GD3:

- Start number 62 was manually annotated 1 time for cluster GD3.

Info for manual annotations of cluster GD4:

- Start number 62 was manually annotated 1 time for cluster GD4.

Info for manual annotations of cluster H1:

- Start number 39 was manually annotated 1 time for cluster H1.
- Start number 46 was manually annotated 7 times for cluster H1.

Info for manual annotations of cluster H2:

- Start number 64 was manually annotated 2 times for cluster H2.

Info for manual annotations of cluster R:

- Start number 67 was manually annotated 8 times for cluster R.

Info for manual annotations of cluster U:

- Start number 57 was manually annotated 3 times for cluster U.

Gene Information:

Gene: A3Wally_113 Start: 77350, Stop: 76415, Start Num: 62

Candidate Starts for A3Wally_113:

(Start: 62 @77350 has 6 MA's), (65, 77341), (92, 77233), (119, 77143), (141, 77092), (148, 77065), (151, 77053), (169, 76969), (171, 76963), (197, 76924), (228, 76807), (244, 76756), (302, 76624), (303, 76621), (305, 76615), (316, 76576), (329, 76510), (336, 76483),

Gene: Adjutor_56 Start: 43047, Stop: 44225, Start Num: 64

Candidate Starts for Adjutor_56:

(6, 42765), (10, 42795), (17, 42858), (Start: 64 @43047 has 45 MA's), (Start: 79 @43095 has 3 MA's), (85, 43134), (88, 43146), (115, 43245), (138, 43308), (151, 43362), (163, 43410), (188, 43476), (221, 43590), (227, 43617), (236, 43647), (247, 43692), (318, 43926), (330, 43992), (333, 44001), (336, 44010), (359, 44136), (373, 44217),

Gene: Aesir_42 Start: 28494, Stop: 29621, Start Num: 67

Candidate Starts for Aesir_42:

(2, 28101), (5, 28182), (Start: 67 @28494 has 78 MA's), (Start: 75 @28515 has 2 MA's), (130, 28725), (151, 28788), (175, 28884), (205, 28989), (247, 29139), (303, 29307), (321, 29373), (347, 29514), (357, 29571),

Gene: Aikoy_74 Start: 50610, Stop: 51827, Start Num: 63

Candidate Starts for Aikoy_74:

(Start: 63 @50610 has 3 MA's), (Start: 75 @50637 has 2 MA's), (84, 50691), (97, 50736), (114, 50802), (117, 50814), (137, 50874), (144, 50904), (145, 50907), (151, 50934), (158, 50961), (190, 51090), (217, 51210), (219, 51216), (243, 51306), (252, 51348), (258, 51366), (261, 51384), (289, 51447), (318, 51531), (333, 51606), (335, 51612), (336, 51615), (347, 51684), (350, 51693), (358, 51738), (366, 51795),

Gene: Ajin_47 Start: 29709, Stop: 30806, Start Num: 69

Candidate Starts for Ajin_47:

(Start: 36 @29655 has 1 MA's), (Start: 69 @29709 has 2 MA's), (Start: 73 @29712 has 1 MA's), (Start: 75 @29718 has 2 MA's), (130, 29928), (132, 29934), (148, 29979), (151, 29991), (167, 30054), (175, 30087), (205, 30192), (250, 30354), (303, 30489), (312, 30513), (350, 30705), (357, 30753),

Gene: Albanese_42 Start: 28164, Stop: 29111, Start Num: 60

Candidate Starts for Albanese_42:

(Start: 60 @28164 has 65 MA's), (103, 28311), (108, 28329), (115, 28353), (138, 28428), (159, 28509), (162, 28524), (166, 28536), (212, 28686), (240, 28755), (241, 28758), (320, 28992), (328, 29037), (329, 29040), (336, 29067), (337, 29070),

Gene: Aledel_39 Start: 27504, Stop: 28451, Start Num: 67

Candidate Starts for Aledel_39:

(Start: 67 @27504 has 78 MA's), (82, 27570), (108, 27669), (115, 27693), (136, 27759), (149, 27807), (154, 27831), (162, 27861), (167, 27879), (169, 27891), (192, 27933), (234, 28071), (240, 28092), (241, 28095), (314, 28302), (328, 28377), (329, 28380), (336, 28407), (337, 28410),

Gene: Alyssamiracle_68 Start: 43081, Stop: 44298, Start Num: 67

Candidate Starts for Alyssamiracle_68:

(Start: 67 @43081 has 78 MA's), (Start: 73 @43096 has 1 MA's), (102, 43225), (129, 43315), (130, 43318), (142, 43354), (151, 43387), (190, 43501), (198, 43528), (205, 43567), (206, 43582), (219, 43612), (227, 43642), (236, 43672), (248, 43720), (291, 43909), (330, 44065), (333, 44074), (336, 44083), (341, 44107), (350, 44161), (356, 44200), (373, 44290),

Gene: Anakin_43 Start: 28820, Stop: 29974, Start Num: 67

Candidate Starts for Anakin_43:

(2, 28421), (Start: 67 @28820 has 78 MA's), (Start: 75 @28841 has 2 MA's), (87, 28910), (130, 29051), (151, 29114), (175, 29210), (205, 29315), (247, 29465), (266, 29555), (280, 29591), (291, 29621), (321, 29726), (331, 29783), (347, 29867), (357, 29924),

Gene: AnnaSerena_43 Start: 28855, Stop: 30009, Start Num: 67

Candidate Starts for AnnaSerena_43:

(2, 28456), (Start: 67 @28855 has 78 MA's), (Start: 75 @28876 has 2 MA's), (87, 28945), (130, 29086), (151, 29149), (175, 29245), (205, 29350), (247, 29500), (266, 29590), (280, 29626), (291, 29656), (321, 29761), (331, 29818), (347, 29902), (357, 29959),

Gene: Apeppi_59 Start: 43297, Stop: 44457, Start Num: 67

Candidate Starts for Apeppi_59:

(Start: 67 @43297 has 78 MA's), (Start: 73 @43312 has 1 MA's), (102, 43441), (129, 43531), (145, 43576), (151, 43603), (198, 43744), (206, 43795), (219, 43825), (227, 43855), (248, 43933), (261, 43993), (263, 44008), (273, 44029), (291, 44068), (292, 44074), (322, 44176), (330, 44224), (333, 44233), (341, 44266), (356, 44359), (373, 44449),

Gene: Apiary_67 Start: 50069, Stop: 48903, Start Num: 64

Candidate Starts for Apiary_67:

(18, 50207), (35, 50099), (Start: 64 @50069 has 45 MA's), (118, 49871), (151, 49748), (169, 49673), (198, 49610), (202, 49583), (231, 49490), (235, 49475), (239, 49451), (247, 49424), (248, 49421), (307, 49211), (319, 49163), (333, 49094), (335, 49088), (357, 48962),

Gene: AppleCider_41 Start: 27545, Stop: 28492, Start Num: 60

Candidate Starts for AppleCider_41:

(Start: 60 @27545 has 65 MA's), (102, 27689), (103, 27692), (107, 27707), (115, 27734), (135, 27797), (139, 27812), (151, 27860), (162, 27905), (166, 27917), (171, 27941), (212, 28067), (240, 28136), (241, 28139), (293, 28283), (314, 28343), (328, 28418), (329, 28421), (336, 28448), (337,

28451),

Gene: Araceli_50 Start: 35827, Stop: 36834, Start Num: 59

Candidate Starts for Araceli_50:

(7, 35590), (22, 35740), (Start: 59 @35827 has 10 MA's), (103, 35992), (112, 36022), (120, 36058), (140, 36133), (149, 36166), (154, 36190), (169, 36250), (193, 36280), (198, 36298), (199, 36301), (205, 36334), (214, 36370), (244, 36460), (264, 36556), (302, 36655), (306, 36667), (328, 36745), (336, 36778), (342, 36811),

Gene: Archimedes_34 Start: 31001, Stop: 30105, Start Num: 73

Candidate Starts for Archimedes_34:

(19, 31136), (23, 31091), (Start: 24 @31085 has 1 MA's), (25, 31076), (51, 31007), (53, 31004), (Start: 73 @31001 has 1 MA's), (102, 30872), (103, 30869), (121, 30821), (151, 30728), (164, 30677), (171, 30647), (191, 30617), (198, 30593), (204, 30560), (234, 30476), (241, 30452), (253, 30404), (275, 30398), (328, 30227),

Gene: Arti_65 Start: 52065, Stop: 50866, Start Num: 64

Candidate Starts for Arti_65:

(Start: 64 @52065 has 45 MA's), (144, 51777), (145, 51774), (150, 51753), (151, 51747), (227, 51474), (232, 51462), (236, 51444), (244, 51411), (248, 51396), (266, 51309), (291, 51222), (305, 51180), (306, 51177), (321, 51120), (331, 51063), (332, 51060), (333, 51057), (336, 51048), (354, 50940), (360, 50916),

Gene: Atuin_100 Start: 83319, Stop: 84290, Start Num: 49

Candidate Starts for Atuin_100:

(Start: 49 @83319 has 2 MA's), (Start: 64 @83343 has 45 MA's), (72, 83364), (98, 83478), (151, 83652), (154, 83667), (171, 83742), (192, 83769), (193, 83772), (197, 83787), (213, 83856), (222, 83877), (225, 83892), (229, 83904), (262, 84024), (265, 84045), (297, 84069), (303, 84090), (327, 84189), (328, 84198),

Gene: AustinPowers_39 Start: 27502, Stop: 28449, Start Num: 67

Candidate Starts for AustinPowers_39:

(Start: 67 @27502 has 78 MA's), (82, 27568), (108, 27667), (115, 27691), (136, 27757), (149, 27805), (154, 27829), (162, 27859), (167, 27877), (169, 27889), (192, 27931), (234, 28069), (240, 28090), (241, 28093), (314, 28300), (328, 28375), (329, 28378), (336, 28405), (337, 28408),

Gene: Avian_64 Start: 42809, Stop: 44026, Start Num: 67

Candidate Starts for Avian_64:

(Start: 67 @42809 has 78 MA's), (Start: 73 @42824 has 1 MA's), (102, 42953), (129, 43043), (130, 43046), (142, 43082), (151, 43115), (190, 43229), (198, 43256), (205, 43295), (206, 43310), (219, 43340), (227, 43370), (236, 43400), (248, 43448), (291, 43637), (330, 43793), (333, 43802), (336, 43811), (341, 43835), (350, 43889), (356, 43928), (373, 44018),

Gene: Barnyard_72 Start: 49524, Stop: 50783, Start Num: 64

Candidate Starts for Barnyard_72:

(Start: 36 @49479 has 1 MA's), (37, 49482), (40, 49488), (Start: 64 @49524 has 45 MA's), (Start: 75 @49542 has 2 MA's), (88, 49614), (102, 49668), (148, 49833), (151, 49845), (163, 49899), (165, 49905), (192, 50010), (197, 50028), (205, 50073), (236, 50181), (265, 50316), (271, 50325), (281, 50358), (283, 50364), (285, 50370), (307, 50442), (333, 50559), (368, 50751), (373, 50775),

Gene: Beckerton_66 Start: 50602, Stop: 51891, Start Num: 46

Candidate Starts for Beckerton_66:

(29, 50563), (Start: 39 @50587 has 2 MA's), (Start: 46 @50602 has 7 MA's), (86, 50716), (91, 50734), (101, 50776), (150, 50950), (151, 50956), (163, 51007), (192, 51121), (197, 51139), (198, 51142), (200, 51157), (205, 51178), (241, 51310), (243, 51316), (284, 51454), (300, 51499), (307, 51517), (321, 51571), (332, 51631), (341, 51667), (357, 51763),

Gene: Beethoven_41 Start: 27476, Stop: 28423, Start Num: 60

Candidate Starts for Beethoven_41:

(Start: 60 @27476 has 65 MA's), (83, 27545), (99, 27608), (102, 27620), (103, 27623), (110, 27647), (139, 27743), (151, 27791), (159, 27821), (166, 27848), (196, 27920), (241, 28070), (244, 28079), (275, 28166), (293, 28214), (314, 28274), (328, 28349), (329, 28352), (336, 28379), (337, 28382),

Gene: Bennie_39 Start: 26287, Stop: 27234, Start Num: 60

Candidate Starts for Bennie_39:

(Start: 60 @26287 has 65 MA's), (99, 26419), (102, 26431), (103, 26434), (110, 26458), (139, 26554), (151, 26602), (166, 26659), (196, 26731), (198, 26740), (241, 26881), (244, 26890), (275, 26977), (314, 27085), (328, 27160), (329, 27163), (336, 27190), (337, 27193),

Gene: Benry_42 Start: 26004, Stop: 27011, Start Num: 30

Candidate Starts for Benry_42:

(Start: 30 @26004 has 14 MA's), (82, 26133), (103, 26214), (151, 26361), (214, 26568), (219, 26580), (243, 26643), (250, 26670), (251, 26676), (282, 26760), (286, 26775), (328, 26937),

Gene: Beyoncage_54 Start: 40427, Stop: 41632, Start Num: 33

Candidate Starts for Beyoncage_54:

(Start: 33 @40427 has 4 MA's), (Start: 64 @40487 has 45 MA's), (Start: 70 @40496 has 10 MA's), (110, 40634), (124, 40658), (168, 40811), (178, 40844), (243, 41090), (244, 41093), (245, 41099), (249, 41114), (289, 41234), (307, 41282), (315, 41312), (317, 41318), (323, 41348), (329, 41381), (333, 41399), (335, 41405), (350, 41486), (355, 41516), (357, 41528), (368, 41591),

Gene: BiPauneto_69 Start: 51654, Stop: 50455, Start Num: 67

Candidate Starts for BiPauneto_69:

(Start: 67 @51654 has 78 MA's), (127, 51435), (134, 51411), (143, 51375), (144, 51372), (145, 51369), (151, 51342), (155, 51324), (169, 51267), (227, 51069), (232, 51057), (248, 50991), (254, 50964), (266, 50904), (291, 50811), (296, 50796), (306, 50766), (307, 50763), (312, 50751), (321, 50709), (333, 50646), (336, 50637), (353, 50535), (354, 50529), (360, 50505),

Gene: Big4_102 Start: 76433, Stop: 75498, Start Num: 62

Candidate Starts for Big4_102:

(Start: 62 @76433 has 6 MA's), (87, 76331), (88, 76328), (92, 76316), (100, 76280), (119, 76226), (141, 76175), (148, 76148), (151, 76136), (169, 76052), (171, 76046), (190, 76031), (197, 76007), (206, 75953), (228, 75890), (302, 75707), (303, 75704), (316, 75659), (329, 75593), (336, 75566),

Gene: BigMack_39 Start: 26387, Stop: 27334, Start Num: 60

Candidate Starts for BigMack_39:

(Start: 60 @26387 has 65 MA's), (81, 26444), (83, 26456), (99, 26519), (102, 26531), (103, 26534), (110, 26558), (139, 26654), (151, 26702), (159, 26732), (166, 26759), (196, 26831), (241, 26981), (244, 26990), (275, 27077), (293, 27125), (314, 27185), (328, 27260), (329, 27263), (336, 27290), (337, 27293),

Gene: BigMama_55 Start: 43123, Stop: 44301, Start Num: 64

Candidate Starts for BigMama_55:

(6, 42841), (10, 42871), (17, 42934), (Start: 64 @43123 has 45 MA's), (Start: 79 @43171 has 3 MA's), (85, 43210), (88, 43222), (115, 43321), (138, 43384), (151, 43438), (163, 43486), (188, 43552), (221,

43666), (227, 43693), (236, 43723), (247, 43768), (318, 44002), (330, 44068), (333, 44077), (336, 44086), (359, 44212), (373, 44293),

Gene: BirthdayBoy_67 Start: 44385, Stop: 45602, Start Num: 67

Candidate Starts for BirthdayBoy_67:

(Start: 67 @44385 has 78 MA's), (Start: 73 @44400 has 1 MA's), (102, 44529), (129, 44619), (130, 44622), (142, 44658), (151, 44691), (190, 44805), (198, 44832), (205, 44871), (206, 44886), (219, 44916), (227, 44946), (236, 44976), (248, 45024), (321, 45315), (330, 45369), (333, 45378), (336, 45387), (341, 45411), (356, 45504), (373, 45594),

Gene: BiteSize_54 Start: 40513, Stop: 41718, Start Num: 33

Candidate Starts for BiteSize_54:

(Start: 33 @40513 has 4 MA's), (Start: 64 @40573 has 45 MA's), (Start: 70 @40582 has 10 MA's), (110, 40720), (124, 40744), (168, 40897), (178, 40930), (243, 41176), (244, 41179), (245, 41185), (249, 41200), (289, 41320), (307, 41368), (315, 41398), (317, 41404), (323, 41434), (329, 41467), (333, 41485), (335, 41491), (350, 41572), (355, 41602), (357, 41614), (368, 41677),

Gene: Bloom_107 Start: 83495, Stop: 84466, Start Num: 49

Candidate Starts for Bloom_107:

(Start: 49 @83495 has 2 MA's), (Start: 64 @83519 has 45 MA's), (72, 83540), (95, 83639), (98, 83654), (103, 83678), (113, 83711), (151, 83828), (154, 83843), (190, 83939), (193, 83948), (222, 84053), (225, 84068), (228, 84077), (249, 84152), (260, 84194), (297, 84245), (303, 84266), (328, 84374), (336, 84404),

Gene: BlueNGold_164 Start: 94575, Stop: 93583, Start Num: 47

Candidate Starts for BlueNGold_164:

(35, 94599), (Start: 47 @94575 has 4 MA's), (82, 94473), (100, 94401), (151, 94248), (171, 94158), (210, 94050), (215, 94041), (224, 94011), (225, 94008), (228, 93999), (239, 93954), (246, 93930), (265, 93849), (296, 93828), (309, 93786), (328, 93699), (329, 93696), (336, 93669), (347, 93606), (348, 93603),

Gene: Bodacious_39 Start: 26343, Stop: 27293, Start Num: 60

Candidate Starts for Bodacious_39:

(Start: 60 @26343 has 65 MA's), (77, 26376), (83, 26412), (99, 26475), (102, 26487), (103, 26490), (110, 26514), (139, 26610), (151, 26658), (154, 26673), (166, 26715), (171, 26739), (196, 26787), (234, 26913), (240, 26937), (241, 26940), (244, 26949), (293, 27084), (314, 27144), (328, 27219), (329, 27222), (336, 27249), (337, 27252),

Gene: Bogota_51 Start: 36181, Stop: 37179, Start Num: 59

Candidate Starts for Bogota_51:

(1, 35788), (7, 35944), (16, 36022), (Start: 55 @36175 has 1 MA's), (Start: 59 @36181 has 10 MA's), (103, 36346), (110, 36370), (140, 36478), (149, 36511), (154, 36535), (169, 36595), (193, 36625), (195, 36631), (198, 36643), (199, 36646), (202, 36670), (205, 36679), (214, 36715), (244, 36805), (264, 36901), (302, 37000), (306, 37012), (342, 37156),

Gene: Bonum_70 Start: 52948, Stop: 51740, Start Num: 66

Candidate Starts for Bonum_70:

(Start: 66 @52948 has 10 MA's), (127, 52726), (134, 52702), (138, 52687), (144, 52663), (145, 52660), (151, 52633), (169, 52558), (202, 52441), (232, 52345), (248, 52279), (269, 52168), (285, 52120), (291, 52099), (305, 52057), (312, 52039), (321, 51997), (330, 51943), (333, 51934), (336, 51925), (354, 51817),

Gene: Boopy_167 Start: 94586, Stop: 93594, Start Num: 47

Candidate Starts for Boopy_167:

(35, 94610), (Start: 47 @94586 has 4 MA's), (82, 94484), (100, 94412), (151, 94259), (171, 94169), (210, 94061), (215, 94052), (224, 94022), (225, 94019), (228, 94010), (239, 93965), (246, 93941), (265, 93860), (296, 93839), (309, 93797), (328, 93710), (329, 93707), (336, 93680), (347, 93617), (348, 93614),

Gene: Braxoaddie_67 Start: 50055, Stop: 48892, Start Num: 64

Candidate Starts for Braxoaddie_67:

(18, 50193), (35, 50085), (Start: 64 @50055 has 45 MA's), (118, 49857), (151, 49734), (153, 49722), (198, 49596), (202, 49569), (248, 49407), (283, 49263), (299, 49224), (307, 49200), (333, 49083), (335, 49077), (357, 48951),

Gene: BrotherBLo_41 Start: 27508, Stop: 28455, Start Num: 60

Candidate Starts for BrotherBLo_41:

(Start: 60 @27508 has 65 MA's), (83, 27577), (99, 27640), (102, 27652), (103, 27655), (110, 27679), (139, 27775), (151, 27823), (159, 27853), (166, 27880), (196, 27952), (241, 28102), (244, 28111), (275, 28198), (293, 28246), (314, 28306), (328, 28381), (329, 28384), (336, 28411), (337, 28414),

Gene: Buggaboo_68 Start: 53499, Stop: 52291, Start Num: 66

Candidate Starts for Buggaboo_68:

(Start: 66 @53499 has 10 MA's), (127, 53277), (134, 53253), (144, 53214), (145, 53211), (151, 53184), (155, 53166), (169, 53109), (232, 52896), (248, 52830), (269, 52719), (285, 52671), (312, 52590), (321, 52548), (330, 52494), (333, 52485), (336, 52476), (354, 52368),

Gene: Butterscotch_56 Start: 43107, Stop: 44285, Start Num: 64

Candidate Starts for Butterscotch_56:

(6, 42825), (10, 42855), (17, 42918), (Start: 64 @43107 has 45 MA's), (Start: 79 @43155 has 3 MA's), (85, 43194), (88, 43206), (115, 43305), (138, 43368), (151, 43422), (163, 43470), (188, 43536), (221, 43650), (227, 43677), (236, 43707), (247, 43752), (318, 43986), (330, 44052), (333, 44061), (336, 44070), (359, 44196), (373, 44277),

Gene: C3PO_69 Start: 50533, Stop: 49421, Start Num: 70

Candidate Starts for C3PO_69:

(Start: 70 @50533 has 10 MA's), (101, 50398), (118, 50347), (138, 50284), (151, 50233), (161, 50191), (169, 50158), (193, 50095), (196, 50086), (198, 50077), (205, 50041), (219, 49987), (263, 49804), (328, 49615), (333, 49594), (340, 49564), (352, 49492), (355, 49477), (356, 49468),

Gene: CallieOMalley_41 Start: 27545, Stop: 28492, Start Num: 60

Candidate Starts for CallieOMalley_41:

(Start: 60 @27545 has 65 MA's), (102, 27689), (103, 27692), (107, 27707), (115, 27734), (135, 27797), (139, 27812), (151, 27860), (162, 27905), (166, 27917), (171, 27941), (212, 28067), (240, 28136), (241, 28139), (293, 28283), (314, 28343), (328, 28418), (329, 28421), (336, 28448), (337, 28451),

Gene: Candle_67 Start: 51720, Stop: 52889, Start Num: 67

Candidate Starts for Candle_67:

(Start: 67 @51720 has 78 MA's), (Start: 73 @51735 has 1 MA's), (81, 51777), (88, 51810), (147, 52011), (151, 52026), (190, 52158), (205, 52221), (206, 52236), (236, 52326), (242, 52353), (303, 52554), (305, 52560), (307, 52566), (331, 52677), (333, 52683), (357, 52815), (367, 52875),

Gene: Canowicakte_41 Start: 27580, Stop: 28527, Start Num: 60

Candidate Starts for Canowicakte_41:

(Start: 60 @27580 has 65 MA's), (102, 27724), (103, 27727), (107, 27742), (115, 27769), (135, 27832), (139, 27847), (151, 27895), (162, 27940), (166, 27952), (171, 27976), (212, 28102), (240, 28171), (241, 28174), (293, 28318), (314, 28378), (328, 28453), (329, 28456), (336, 28483), (337, 28486),

Gene: Carpal_41 Start: 27488, Stop: 28435, Start Num: 60

Candidate Starts for Carpal_41:

(Start: 60 @27488 has 65 MA's), (83, 27557), (99, 27620), (102, 27632), (103, 27635), (110, 27659), (139, 27755), (151, 27803), (159, 27833), (166, 27860), (196, 27932), (241, 28082), (244, 28091), (275, 28178), (293, 28226), (314, 28286), (328, 28361), (329, 28364), (336, 28391), (337, 28394),

Gene: Cborch11_69 Start: 50121, Stop: 51410, Start Num: 46

Candidate Starts for Cborch11_69:

(29, 50082), (Start: 39 @50106 has 2 MA's), (Start: 46 @50121 has 7 MA's), (86, 50235), (88, 50244), (91, 50253), (101, 50295), (150, 50469), (151, 50475), (163, 50526), (192, 50640), (197, 50658), (198, 50661), (200, 50676), (205, 50697), (241, 50829), (243, 50835), (300, 51018), (307, 51036), (317, 51072), (321, 51090), (332, 51150), (341, 51186), (357, 51282),

Gene: Cece_96 Start: 79474, Stop: 78539, Start Num: 62

Candidate Starts for Cece_96:

(Start: 62 @79474 has 6 MA's), (65, 79465), (83, 79390), (96, 79339), (113, 79279), (141, 79216), (148, 79189), (151, 79177), (169, 79093), (171, 79087), (183, 79084), (190, 79072), (197, 79048), (206, 78994), (225, 78940), (228, 78931), (229, 78928), (302, 78748), (303, 78745), (305, 78739), (316, 78700), (328, 78637), (329, 78634),

Gene: ChewChew_39 Start: 26335, Stop: 27285, Start Num: 60

Candidate Starts for ChewChew_39:

(Start: 60 @26335 has 65 MA's), (99, 26467), (102, 26479), (103, 26482), (110, 26506), (139, 26602), (151, 26650), (166, 26707), (171, 26731), (194, 26773), (196, 26779), (234, 26905), (240, 26929), (241, 26932), (244, 26941), (293, 27076), (314, 27136), (328, 27211), (336, 27241), (337, 27244),

Gene: ChewyVIII_80 Start: 59181, Stop: 57982, Start Num: 43

Candidate Starts for ChewyVIII_80:

(13, 59355), (Start: 43 @59181 has 1 MA's), (Start: 63 @59148 has 3 MA's), (84, 59064), (145, 58863), (150, 58842), (151, 58836), (153, 58824), (169, 58761), (195, 58707), (198, 58695), (204, 58662), (219, 58614), (265, 58422), (296, 58314), (298, 58308), (321, 58227), (344, 58095), (346, 58089), (347, 58086), (364, 57990),

Gene: Chill_59 Start: 43170, Stop: 44348, Start Num: 64

Candidate Starts for Chill_59:

(6, 42888), (10, 42918), (17, 42981), (Start: 64 @43170 has 45 MA's), (Start: 79 @43218 has 3 MA's), (85, 43257), (88, 43269), (115, 43368), (138, 43431), (151, 43485), (163, 43533), (188, 43599), (221, 43713), (227, 43740), (236, 43770), (247, 43815), (318, 44049), (330, 44115), (333, 44124), (336, 44133), (359, 44259), (373, 44340),

Gene: Chivey_43 Start: 28072, Stop: 29199, Start Num: 67

Candidate Starts for Chivey_43:

(2, 27679), (4, 27745), (5, 27760), (Start: 67 @28072 has 78 MA's), (Start: 75 @28093 has 2 MA's), (96, 28189), (130, 28303), (151, 28366), (175, 28462), (205, 28567), (247, 28717), (303, 28885), (321, 28951), (331, 29008), (347, 29092), (357, 29149),

Gene: Cholula_41 Start: 27534, Stop: 28481, Start Num: 60

Candidate Starts for Cholula_41:

(Start: 60 @27534 has 65 MA's), (83, 27603), (99, 27666), (102, 27678), (103, 27681), (110, 27705), (139, 27801), (151, 27849), (159, 27879), (166, 27906), (196, 27978), (241, 28128), (244, 28137), (275, 28224), (293, 28272), (314, 28332), (328, 28407), (329, 28410), (336, 28437), (337, 28440),

Gene: Chridison_38 Start: 27433, Stop: 28383, Start Num: 67

Candidate Starts for Chridison_38:

(32, 27379), (Start: 67 @27433 has 78 MA's), (103, 27580), (108, 27598), (136, 27688), (149, 27739), (159, 27778), (162, 27793), (167, 27811), (194, 27871), (223, 27988), (240, 28027), (244, 28039), (275, 28126), (293, 28174), (314, 28234), (328, 28309), (329, 28312), (336, 28339), (337, 28342),

Gene: Christian_39 Start: 26331, Stop: 27281, Start Num: 60

Candidate Starts for Christian_39:

(Start: 60 @26331 has 65 MA's), (99, 26463), (102, 26475), (103, 26478), (110, 26502), (139, 26598), (151, 26646), (166, 26703), (171, 26727), (196, 26775), (234, 26901), (240, 26925), (241, 26928), (244, 26937), (293, 27072), (314, 27132), (328, 27207), (336, 27237), (337, 27240),

Gene: Cicada_44 Start: 27802, Stop: 28815, Start Num: 30

Candidate Starts for Cicada_44:

(Start: 30 @27802 has 14 MA's), (103, 28012), (125, 28081), (151, 28165), (166, 28222), (198, 28300), (212, 28369), (214, 28372), (243, 28447), (250, 28474), (286, 28579), (302, 28630), (316, 28678), (328, 28741),

Gene: CoffeeBean_68 Start: 50013, Stop: 48850, Start Num: 64

Candidate Starts for CoffeeBean_68:

(18, 50151), (35, 50043), (Start: 64 @50013 has 45 MA's), (118, 49815), (151, 49692), (153, 49680), (198, 49554), (202, 49527), (248, 49365), (283, 49221), (299, 49182), (307, 49158), (333, 49041), (335, 49035), (357, 48909),

Gene: Commandaria_67 Start: 53320, Stop: 52109, Start Num: 64

Candidate Starts for Commandaria_67:

(Start: 64 @53320 has 45 MA's), (111, 53140), (127, 53092), (151, 52999), (184, 52876), (187, 52867), (227, 52726), (232, 52714), (248, 52648), (306, 52420), (312, 52405), (321, 52363), (330, 52309), (332, 52303), (333, 52300), (336, 52291), (339, 52276), (354, 52183), (360, 52159),

Gene: CoolCookie_48 Start: 28850, Stop: 30004, Start Num: 67

Candidate Starts for CoolCookie_48:

(2, 28451), (Start: 67 @28850 has 78 MA's), (Start: 75 @28871 has 2 MA's), (130, 29081), (151, 29144), (175, 29240), (205, 29345), (247, 29495), (266, 29585), (280, 29621), (291, 29651), (321, 29756), (331, 29813), (347, 29897), (357, 29954),

Gene: Crestdrop_44 Start: 28106, Stop: 29230, Start Num: 67

Candidate Starts for Crestdrop_44:

(2, 27713), (4, 27779), (5, 27794), (Start: 67 @28106 has 78 MA's), (Start: 75 @28127 has 2 MA's), (130, 28337), (151, 28400), (175, 28496), (205, 28601), (247, 28751), (291, 28880), (321, 28982), (347, 29123), (357, 29180),

Gene: CristinaYang_39 Start: 26331, Stop: 27281, Start Num: 60

Candidate Starts for CristinaYang_39:

(Start: 60 @26331 has 65 MA's), (99, 26463), (102, 26475), (103, 26478), (110, 26502), (139, 26598), (151, 26646), (166, 26703), (171, 26727), (194, 26769), (196, 26775), (234, 26901), (240, 26925), (241, 26928), (244, 26937), (293, 27072), (314, 27132), (328, 27207), (336, 27237), (337, 27240),

Gene: Crosby_51 Start: 35943, Stop: 36941, Start Num: 59

Candidate Starts for Crosby_51:

(7, 35706), (11, 35733), (16, 35784), (Start: 55 @35937 has 1 MA's), (Start: 59 @35943 has 10 MA's), (103, 36108), (110, 36132), (140, 36240), (149, 36273), (154, 36297), (169, 36357), (193, 36387), (195, 36393), (198, 36405), (199, 36408), (205, 36441), (214, 36477), (244, 36567), (264, 36663), (294, 36735), (306, 36774), (342, 36918),

Gene: Cruella_69 Start: 50533, Stop: 49421, Start Num: 70

Candidate Starts for Cruella_69:

(Start: 70 @50533 has 10 MA's), (101, 50398), (118, 50347), (138, 50284), (151, 50233), (161, 50191), (169, 50158), (193, 50095), (196, 50086), (198, 50077), (205, 50041), (219, 49987), (263, 49804), (328, 49615), (333, 49594), (340, 49564), (352, 49492), (355, 49477), (356, 49468),

Gene: Cuke_76 Start: 45241, Stop: 46281, Start Num: 64

Candidate Starts for Cuke_76:

(Start: 64 @45241 has 45 MA's), (Start: 67 @45250 has 78 MA's), (Start: 73 @45265 has 1 MA's), (78, 45286), (96, 45367), (Start: 128 @45475 has 1 MA's), (142, 45526), (152, 45565), (154, 45577), (166, 45619), (197, 45700), (206, 45757), (226, 45811), (236, 45847), (243, 45877), (310, 45961), (321, 46003), (333, 46066), (340, 46096), (356, 46195), (365, 46249),

Gene: Cybele_43 Start: 28820, Stop: 29974, Start Num: 67

Candidate Starts for Cybele_43:

(2, 28421), (Start: 67 @28820 has 78 MA's), (Start: 75 @28841 has 2 MA's), (130, 29051), (151, 29114), (175, 29210), (205, 29315), (247, 29465), (266, 29555), (280, 29591), (291, 29621), (321, 29726), (331, 29783), (347, 29867), (357, 29924),

Gene: Daiboju_39 Start: 27511, Stop: 28464, Start Num: 67

Candidate Starts for Daiboju_39:

(Start: 67 @27511 has 78 MA's), (81, 27568), (103, 27658), (108, 27676), (136, 27766), (149, 27817), (159, 27856), (162, 27871), (167, 27889), (169, 27901), (194, 27949), (223, 28066), (240, 28105), (244, 28117), (314, 28315), (328, 28390), (336, 28420), (337, 28423),

Gene: Dalilpop_70 Start: 54174, Stop: 52993, Start Num: 66

Candidate Starts for Dalilpop_70:

(Start: 66 @54174 has 10 MA's), (Start: 128 @53949 has 1 MA's), (135, 53925), (144, 53889), (151, 53859), (163, 53811), (187, 53748), (236, 53577), (248, 53529), (263, 53454), (266, 53442), (285, 53370), (307, 53301), (333, 53184), (336, 53175), (339, 53160), (360, 53043),

Gene: Damien_67 Start: 50083, Stop: 51372, Start Num: 46

Candidate Starts for Damien_67:

(29, 50044), (Start: 39 @50068 has 2 MA's), (Start: 46 @50083 has 7 MA's), (86, 50197), (91, 50215), (101, 50257), (150, 50431), (151, 50437), (163, 50488), (192, 50602), (197, 50620), (198, 50623), (200, 50638), (205, 50659), (241, 50791), (243, 50797), (284, 50935), (300, 50980), (307, 50998), (321, 51052), (332, 51112), (341, 51148), (357, 51244),

Gene: DannyDe_43 Start: 28078, Stop: 29205, Start Num: 67

Candidate Starts for DannyDe_43:

(2, 27685), (4, 27751), (5, 27766), (Start: 67 @28078 has 78 MA's), (Start: 75 @28099 has 2 MA's), (96, 28195), (130, 28309), (151, 28372), (175, 28468), (205, 28573), (247, 28723), (303, 28891), (321, 28957), (331, 29014), (347, 29098), (357, 29155),

Gene: Darwin_70 Start: 49774, Stop: 48662, Start Num: 70

Candidate Starts for Darwin_70:

(Start: 70 @49774 has 10 MA's), (118, 49588), (151, 49474), (161, 49432), (169, 49399), (193, 49336), (196, 49327), (198, 49318), (205, 49282), (219, 49228), (263, 49045), (328, 48856), (333, 48835), (340, 48805), (352, 48733), (355, 48718), (356, 48709),

Gene: Dauntless_43 Start: 28400, Stop: 29557, Start Num: 67

Candidate Starts for Dauntless_43:

(2, 28007), (5, 28088), (Start: 67 @28400 has 78 MA's), (Start: 75 @28421 has 2 MA's), (130, 28631), (151, 28694), (175, 28790), (205, 28895), (247, 29045), (301, 29237), (303, 29243), (321, 29309), (347, 29450), (357, 29507),

Gene: Delton_58 Start: 43505, Stop: 44683, Start Num: 64

Candidate Starts for Delton_58:

(6, 43223), (10, 43253), (17, 43316), (Start: 64 @43505 has 45 MA's), (Start: 79 @43553 has 3 MA's), (85, 43592), (88, 43604), (115, 43703), (138, 43766), (151, 43820), (163, 43868), (188, 43934), (221, 44048), (227, 44075), (236, 44105), (247, 44150), (318, 44384), (330, 44450), (333, 44459), (336, 44468), (359, 44594), (373, 44675),

Gene: Dino_42 Start: 27635, Stop: 28582, Start Num: 60

Candidate Starts for Dino_42:

(Start: 60 @27635 has 65 MA's), (99, 27767), (102, 27779), (103, 27782), (110, 27806), (139, 27902), (151, 27950), (159, 27980), (166, 28007), (196, 28079), (241, 28229), (244, 28238), (275, 28325), (293, 28373), (314, 28433), (328, 28508), (336, 28538), (337, 28541),

Gene: Djokovic_54 Start: 40486, Stop: 41631, Start Num: 64

Candidate Starts for Djokovic_54:

(Start: 33 @40426 has 4 MA's), (Start: 64 @40486 has 45 MA's), (Start: 70 @40495 has 10 MA's), (110, 40633), (124, 40657), (168, 40810), (178, 40843), (243, 41089), (244, 41092), (245, 41098), (249, 41113), (289, 41233), (307, 41281), (315, 41311), (317, 41317), (323, 41347), (329, 41380), (333, 41398), (335, 41404), (350, 41485), (355, 41515), (357, 41527), (368, 41590),

Gene: DoobyDoo_63 Start: 43023, Stop: 44186, Start Num: 67

Candidate Starts for DoobyDoo_63:

(Start: 67 @43023 has 78 MA's), (Start: 73 @43038 has 1 MA's), (102, 43167), (129, 43257), (130, 43260), (142, 43296), (151, 43329), (190, 43443), (198, 43470), (205, 43509), (206, 43524), (219, 43554), (227, 43584), (236, 43614), (248, 43662), (291, 43797), (321, 43899), (330, 43953), (333, 43962), (336, 43971), (341, 43995), (356, 44088), (373, 44178),

Gene: DrLupo_75 Start: 50706, Stop: 51980, Start Num: 64

Candidate Starts for DrLupo_75:

(Start: 64 @50706 has 45 MA's), (Start: 73 @50730 has 1 MA's), (102, 50859), (148, 51027), (151, 51039), (163, 51093), (165, 51099), (173, 51132), (179, 51153), (182, 51177), (185, 51183), (197, 51228), (199, 51234), (203, 51267), (204, 51270), (205, 51273), (236, 51381), (265, 51516), (271, 51525), (283, 51564), (285, 51570), (295, 51600), (297, 51606), (307, 51639), (308, 51642), (321, 51693), (324, 51717), (327, 51726), (333, 51756), (357, 51885), (360, 51894), (368, 51948), (373, 51972),

Gene: DrRobert_38 Start: 26111, Stop: 27061, Start Num: 60

Candidate Starts for DrRobert_38:

(Start: 60 @26111 has 65 MA's), (83, 26180), (99, 26243), (102, 26255), (103, 26258), (107, 26273), (108, 26276), (110, 26282), (139, 26378), (151, 26426), (154, 26441), (166, 26483), (171, 26507), (192, 26543), (194, 26549), (196, 26555), (234, 26681), (240, 26705), (241, 26708), (244, 26717), (293, 26852), (314, 26912), (328, 26987), (329, 26990), (336, 27017), (337, 27020),

Gene: DreamTeam_39 Start: 26441, Stop: 27388, Start Num: 60

Candidate Starts for DreamTeam_39:

(Start: 60 @26441 has 65 MA's), (83, 26510), (99, 26573), (102, 26585), (103, 26588), (110, 26612), (139, 26708), (151, 26756), (166, 26813), (169, 26831), (192, 26873), (196, 26885), (293, 27179), (314, 27239), (328, 27314), (329, 27317), (336, 27344), (337, 27347),

Gene: Dryad_70 Start: 48069, Stop: 47071, Start Num: 68

Candidate Starts for Dryad_70:

(58, 48093), (Start: 68 @48069 has 7 MA's), (74, 48057), (87, 47985), (90, 47976), (151, 47778), (152, 47775), (198, 47619), (205, 47583), (227, 47508), (232, 47496), (247, 47433), (250, 47421), (312, 47364), (318, 47334), (326, 47292), (331, 47265), (333, 47259), (336, 47250), (347, 47178), (349, 47172),

Gene: DumpTruck_64 Start: 42784, Stop: 43998, Start Num: 67

Candidate Starts for DumpTruck_64:

(54, 42760), (Start: 67 @42784 has 78 MA's), (Start: 73 @42796 has 1 MA's), (129, 43015), (130, 43018), (145, 43060), (151, 43087), (154, 43102), (198, 43228), (206, 43282), (219, 43312), (227, 43342), (246, 43414), (267, 43513), (278, 43561), (281, 43576), (320, 43708), (330, 43765), (333, 43774), (336, 43783), (341, 43807), (356, 43900), (369, 43969), (373, 43990),

Gene: DunneganBoMo_96 Start: 79281, Stop: 80207, Start Num: 72

Candidate Starts for DunneganBoMo_96:

(Start: 64 @79260 has 45 MA's), (72, 79281), (87, 79356), (98, 79395), (151, 79569), (154, 79584), (171, 79659), (192, 79686), (193, 79689), (199, 79710), (213, 79773), (222, 79794), (225, 79809), (229, 79821), (297, 79986), (303, 80007), (327, 80106), (328, 80115), (336, 80145),

Gene: Emianna_66 Start: 53297, Stop: 52098, Start Num: 64

Candidate Starts for Emianna_66:

(Start: 64 @53297 has 45 MA's), (144, 53009), (145, 53006), (150, 52985), (151, 52979), (227, 52706), (232, 52694), (236, 52676), (244, 52643), (248, 52628), (266, 52541), (291, 52454), (296, 52439), (306, 52409), (307, 52406), (321, 52352), (331, 52295), (332, 52292), (333, 52289), (336, 52280), (354, 52172), (360, 52148),

Gene: Ennea_73 Start: 54279, Stop: 53080, Start Num: 56

Candidate Starts for Ennea_73:

(Start: 56 @54279 has 2 MA's), (Start: 61 @54270 has 4 MA's), (115, 54072), (143, 53979), (144, 53976), (145, 53973), (151, 53946), (155, 53928), (169, 53871), (232, 53676), (233, 53673), (236, 53658), (248, 53610), (272, 53496), (278, 53484), (291, 53436), (307, 53388), (321, 53334), (333, 53271), (336, 53262), (356, 53142),

Gene: Erk16_56 Start: 43209, Stop: 44387, Start Num: 64

Candidate Starts for Erk16_56:

(6, 42927), (10, 42957), (17, 43020), (Start: 64 @43209 has 45 MA's), (Start: 79 @43257 has 3 MA's), (85, 43296), (88, 43308), (115, 43407), (138, 43470), (151, 43524), (163, 43572), (188, 43638), (221, 43752), (227, 43779), (236, 43809), (247, 43854), (318, 44088), (330, 44154), (333, 44163), (336, 44172), (359, 44298), (373, 44379),

Gene: Erudite_42 Start: 28400, Stop: 29557, Start Num: 67

Candidate Starts for Erudite_42:

(2, 28007), (5, 28088), (Start: 67 @28400 has 78 MA's), (Start: 75 @28421 has 2 MA's), (130, 28631), (151, 28694), (175, 28790), (205, 28895), (247, 29045), (301, 29237), (303, 29243), (321, 29309), (347, 29450), (357, 29507),

Gene: Erutan_65 Start: 43665, Stop: 44828, Start Num: 67

Candidate Starts for Erutan_65:

(Start: 67 @43665 has 78 MA's), (Start: 73 @43680 has 1 MA's), (102, 43809), (129, 43899), (130, 43902), (142, 43938), (151, 43971), (190, 44085), (198, 44112), (205, 44151), (206, 44166), (219, 44196), (227, 44226), (236, 44256), (248, 44304), (291, 44439), (321, 44541), (330, 44595), (333, 44604), (336, 44613), (341, 44637), (356, 44730), (373, 44820),

Gene: EstebanJulior_40 Start: 27489, Stop: 28439, Start Num: 60

Candidate Starts for EstebanJulior_40:

(Start: 60 @27489 has 65 MA's), (99, 27621), (103, 27636), (107, 27651), (110, 27660), (139, 27756), (151, 27804), (154, 27819), (166, 27861), (171, 27885), (196, 27933), (198, 27942), (234, 28059), (241, 28086), (244, 28095), (314, 28290), (316, 28302), (328, 28365), (329, 28368), (336, 28395), (337, 28398),

Gene: Eunoia_39 Start: 27504, Stop: 28451, Start Num: 67

Candidate Starts for Eunoia_39:

(Start: 67 @27504 has 78 MA's), (82, 27570), (108, 27669), (115, 27693), (136, 27759), (149, 27807), (154, 27831), (162, 27861), (167, 27879), (169, 27891), (192, 27933), (234, 28071), (240, 28092), (241, 28095), (314, 28302), (328, 28377), (329, 28380), (336, 28407), (337, 28410),

Gene: FireCastle_42 Start: 27533, Stop: 28546, Start Num: 30

Candidate Starts for FireCastle_42:

(Start: 30 @27533 has 14 MA's), (Start: 75 @27614 has 2 MA's), (102, 27740), (103, 27743), (125, 27812), (134, 27836), (151, 27896), (154, 27911), (166, 27953), (198, 28031), (212, 28100), (214, 28103), (219, 28115), (240, 28169), (250, 28205), (251, 28211), (282, 28295), (286, 28310), (302, 28361), (316, 28409), (325, 28457), (328, 28472),

Gene: Flapper_69 Start: 53365, Stop: 52184, Start Num: 66

Candidate Starts for Flapper_69:

(Start: 66 @53365 has 10 MA's), (Start: 128 @53140 has 1 MA's), (135, 53116), (144, 53080), (151, 53050), (163, 53002), (187, 52939), (236, 52768), (248, 52720), (266, 52633), (269, 52609), (285, 52561), (307, 52492), (333, 52375), (336, 52366), (339, 52351), (360, 52234),

Gene: Float294_67 Start: 53958, Stop: 52795, Start Num: 76

Candidate Starts for Float294_67:

(Start: 76 @53958 has 2 MA's), (115, 53787), (143, 53694), (144, 53691), (145, 53688), (151, 53661), (155, 53643), (169, 53586), (232, 53391), (233, 53388), (236, 53373), (248, 53325), (272, 53211), (278, 53199), (291, 53151), (307, 53103), (321, 53049), (333, 52986), (336, 52977), (356, 52857),

Gene: Fluke_42 Start: 27751, Stop: 28698, Start Num: 60

Candidate Starts for Fluke_42:

(Start: 60 @27751 has 65 MA's), (83, 27820), (99, 27883), (102, 27895), (103, 27898), (110, 27922), (139, 28018), (151, 28066), (159, 28096), (166, 28123), (196, 28195), (241, 28345), (244, 28354), (275, 28441), (293, 28489), (314, 28549), (328, 28624), (329, 28627), (336, 28654), (337, 28657),

Gene: Forza_168 Start: 94503, Stop: 93511, Start Num: 47

Candidate Starts for Forza_168:

(35, 94527), (Start: 47 @94503 has 4 MA's), (82, 94401), (100, 94329), (151, 94176), (171, 94086), (210, 93978), (215, 93969), (224, 93939), (225, 93936), (228, 93927), (239, 93882), (246, 93858), (265, 93777), (296, 93756), (309, 93714), (328, 93627), (329, 93624), (336, 93597), (347, 93534), (348, 93531),

Gene: Fowlmouth_77 Start: 47770, Stop: 48810, Start Num: 64

Candidate Starts for Fowlmouth_77:

(41, 47731), (Start: 64 @47770 has 45 MA's), (Start: 67 @47779 has 78 MA's), (Start: 73 @47794 has 1 MA's), (78, 47815), (96, 47896), (Start: 128 @48004 has 1 MA's), (142, 48055), (152, 48094), (163, 48139), (166, 48148), (202, 48262), (206, 48286), (240, 48397), (310, 48490), (321, 48532), (333, 48595), (340, 48625), (356, 48724),

Gene: Foxboro_67 Start: 53822, Stop: 52623, Start Num: 64

Candidate Starts for Foxboro_67:

(Start: 64 @53822 has 45 MA's), (144, 53534), (145, 53531), (150, 53510), (151, 53504), (227, 53231), (232, 53219), (236, 53201), (244, 53168), (248, 53153), (266, 53066), (291, 52979), (296, 52964), (306, 52934), (307, 52931), (321, 52877), (331, 52820), (332, 52817), (333, 52814), (336, 52805), (354, 52697), (360, 52673),

Gene: FreddieHg_43 Start: 28088, Stop: 29215, Start Num: 67

Candidate Starts for FreddieHg_43:

(2, 27695), (4, 27761), (5, 27776), (Start: 67 @28088 has 78 MA's), (Start: 75 @28109 has 2 MA's), (96, 28205), (130, 28319), (151, 28382), (175, 28478), (205, 28583), (247, 28733), (303, 28901), (321, 28967), (331, 29024), (347, 29108), (357, 29165),

Gene: Fulcrum_65 Start: 43693, Stop: 44910, Start Num: 67

Candidate Starts for Fulcrum_65:

(Start: 67 @43693 has 78 MA's), (Start: 73 @43708 has 1 MA's), (102, 43837), (129, 43927), (130, 43930), (142, 43966), (151, 43999), (190, 44113), (198, 44140), (205, 44179), (206, 44194), (219, 44224), (227, 44254), (236, 44284), (246, 44326), (248, 44332), (321, 44623), (330, 44677), (333, 44686), (336, 44695), (341, 44719), (356, 44812), (373, 44902),

Gene: Fury_75 Start: 52498, Stop: 51308, Start Num: 61

Candidate Starts for Fury_75:

(3, 52828), (12, 52726), (Start: 61 @52498 has 4 MA's), (Start: 73 @52471 has 1 MA's), (95, 52378), (130, 52255), (134, 52243), (145, 52201), (151, 52174), (152, 52171), (248, 51841), (266, 51754), (291, 51661), (307, 51613), (333, 51496), (340, 51466), (349, 51409), (354, 51379), (360, 51355),

Gene: GMA2_62 Start: 65413, Stop: 64418, Start Num: 45

Candidate Starts for GMA2_62:

(45, 65413), (83, 65302), (94, 65263), (112, 65191), (151, 65080), (190, 64966), (197, 64942), (201, 64915), (204, 64906), (210, 64879), (225, 64837), (228, 64828), (246, 64762), (260, 64708), (262, 64702), (297, 64657), (306, 64627), (308, 64621), (315, 64594), (328, 64531), (329, 64528), (336, 64501), (340, 64483), (347, 64438),

Gene: GOATification_65 Start: 43693, Stop: 44910, Start Num: 67

Candidate Starts for GOATification_65:

(Start: 67 @43693 has 78 MA's), (Start: 73 @43708 has 1 MA's), (102, 43837), (129, 43927), (130, 43930), (142, 43966), (151, 43999), (190, 44113), (198, 44140), (205, 44179), (206, 44194), (219, 44224), (227, 44254), (236, 44284), (246, 44326), (248, 44332), (321, 44623), (330, 44677), (333, 44686), (336, 44695), (341, 44719), (356, 44812), (373, 44902),

Gene: GRU1_55 Start: 45213, Stop: 44032, Start Num: 66

Candidate Starts for GRU1_55:

(Start: 66 @45213 has 10 MA's), (Start: 128 @44988 has 1 MA's), (135, 44964), (144, 44928), (151, 44898), (163, 44850), (187, 44787), (236, 44616), (248, 44568), (263, 44493), (266, 44481), (285, 44409), (307, 44340), (333, 44223), (336, 44214), (339, 44199), (360, 44082),

Gene: GTE5_55 Start: 46020, Stop: 45064, Start Num: 128

Candidate Starts for GTE5_55:

(Start: 128 @46020 has 1 MA's), (130, 46011), (135, 45996), (144, 45960), (151, 45930), (163, 45882), (187, 45819), (248, 45600), (265, 45516), (266, 45513), (285, 45441), (307, 45372), (333, 45255), (336, 45246), (339, 45231), (354, 45138), (360, 45114),

Gene: GTE8_55 Start: 46534, Stop: 45335, Start Num: 64

Candidate Starts for GTE8_55:

(Start: 64 @46534 has 45 MA's), (143, 46249), (145, 46243), (150, 46222), (151, 46216), (232, 45931), (236, 45913), (244, 45880), (248, 45865), (266, 45778), (306, 45646), (307, 45643), (321, 45589), (332, 45529), (333, 45526), (336, 45517), (354, 45409), (360, 45385),

Gene: Galactica_39 Start: 28326, Stop: 29291, Start Num: 42

Candidate Starts for Galactica_39:

(Start: 42 @28326 has 2 MA's), (99, 28488), (127, 28563), (150, 28626), (151, 28632), (194, 28755), (198, 28770), (199, 28773), (202, 28797), (223, 28872), (240, 28908), (274, 29025), (288, 29064), (313, 29127),

Gene: Genamy16_68 Start: 43067, Stop: 44284, Start Num: 67

Candidate Starts for Genamy16_68:

(Start: 67 @43067 has 78 MA's), (Start: 73 @43082 has 1 MA's), (102, 43211), (129, 43301), (130, 43304), (142, 43340), (151, 43373), (190, 43487), (198, 43514), (205, 43553), (206, 43568), (219, 43598), (227, 43628), (236, 43658), (248, 43706), (291, 43895), (330, 44051), (333, 44060), (336, 44069), (341, 44093), (350, 44147), (356, 44186), (373, 44276),

Gene: Ghobes_32 Start: 30098, Stop: 29172, Start Num: 75

Candidate Starts for Ghobes_32:

(Start: 24 @30206 has 1 MA's), (71, 30104), (Start: 73 @30101 has 1 MA's), (Start: 75 @30098 has 2 MA's), (94, 30011), (115, 29927), (121, 29921), (134, 29894), (171, 29747), (186, 29726), (190, 29720), (196, 29702), (217, 29615), (219, 29609), (238, 29567), (240, 29555), (253, 29504), (275, 29498), (331, 29309), (345, 29228), (346, 29225), (353, 29186),

Gene: Gibbin_67 Start: 44498, Stop: 45715, Start Num: 67

Candidate Starts for Gibbin_67:

(Start: 67 @44498 has 78 MA's), (Start: 73 @44513 has 1 MA's), (102, 44642), (129, 44732), (130, 44735), (142, 44771), (151, 44804), (190, 44918), (198, 44945), (205, 44984), (206, 44999), (219, 45029), (227, 45059), (236, 45089), (248, 45137), (321, 45428), (330, 45482), (333, 45491), (336, 45500), (341, 45524), (356, 45617), (373, 45707),

Gene: Gibson_66 Start: 47338, Stop: 46340, Start Num: 68

Candidate Starts for Gibson_66:

(Start: 68 @47338 has 7 MA's), (74, 47326), (151, 47047), (152, 47044), (189, 46915), (198, 46888), (205, 46852), (227, 46777), (232, 46765), (247, 46702), (318, 46603), (326, 46561), (333, 46528), (336, 46519), (347, 46447), (349, 46441), (362, 46357),

Gene: Gilda_43 Start: 28844, Stop: 29998, Start Num: 67

Candidate Starts for Gilda_43:

(2, 28445), (Start: 67 @28844 has 78 MA's), (Start: 75 @28865 has 2 MA's), (130, 29075), (151, 29138), (175, 29234), (205, 29339), (247, 29489), (266, 29579), (280, 29615), (291, 29645), (321, 29750), (331, 29807), (347, 29891), (357, 29948),

Gene: Gisselle_39 Start: 26441, Stop: 27388, Start Num: 60

Candidate Starts for Gisselle_39:

(Start: 60 @26441 has 65 MA's), (83, 26510), (99, 26573), (102, 26585), (103, 26588), (110, 26612), (139, 26708), (151, 26756), (166, 26813), (169, 26831), (192, 26873), (196, 26885), (293, 27179), (314, 27239), (328, 27314), (329, 27317), (336, 27344), (337, 27347),

Gene: Giuseppe_58 Start: 43075, Stop: 44253, Start Num: 64

Candidate Starts for Giuseppe_58:

(6, 42793), (10, 42823), (17, 42886), (Start: 64 @43075 has 45 MA's), (Start: 79 @43123 has 3 MA's), (85, 43162), (88, 43174), (115, 43273), (138, 43336), (151, 43390), (163, 43438), (188, 43504), (221, 43618), (227, 43645), (236, 43675), (247, 43720), (318, 43954), (330, 44020), (333, 44029), (336, 44038), (359, 44164), (373, 44245),

Gene: Glenn_42 Start: 27742, Stop: 28689, Start Num: 60

Candidate Starts for Glenn_42:

(Start: 60 @27742 has 65 MA's), (99, 27874), (102, 27886), (103, 27889), (110, 27913), (139, 28009), (151, 28057), (159, 28087), (166, 28114), (196, 28186), (241, 28336), (244, 28345), (275, 28432), (293, 28480), (314, 28540), (328, 28615), (329, 28618), (336, 28645), (337, 28648),

Gene: GodonK_181 Start: 91029, Stop: 90010, Start Num: 39

Candidate Starts for GodonK_181:

(Start: 39 @91029 has 2 MA's), (Start: 75 @90957 has 2 MA's), (Start: 79 @90936 has 3 MA's), (87, 90888), (94, 90867), (112, 90795), (138, 90732), (148, 90696), (151, 90684), (154, 90669), (205, 90510), (215, 90477), (218, 90468), (228, 90435), (230, 90429), (240, 90390), (245, 90372), (246, 90369), (265, 90288), (296, 90267), (303, 90243), (315, 90201), (328, 90138), (329, 90135), (336, 90108), (340, 90090),

Gene: Goodman_43 Start: 27572, Stop: 28585, Start Num: 30

Candidate Starts for Goodman_43:

(21, 27527), (Start: 30 @27572 has 14 MA's), (82, 27701), (103, 27782), (125, 27851), (151, 27935), (166, 27992), (198, 28070), (212, 28139), (214, 28142), (243, 28217), (250, 28244), (251, 28250), (282, 28334), (286, 28349), (302, 28400), (316, 28448), (328, 28511),

Gene: GreenHearts_42 Start: 28250, Stop: 29197, Start Num: 60

Candidate Starts for GreenHearts_42:

(Start: 60 @28250 has 65 MA's), (103, 28397), (115, 28439), (134, 28499), (138, 28514), (159, 28595), (162, 28610), (166, 28622), (212, 28772), (240, 28841), (241, 28844), (320, 29078), (328, 29123), (329, 29126), (336, 29153), (337, 29156),

Gene: Greenhouse_43 Start: 28175, Stop: 29122, Start Num: 60

Candidate Starts for Greenhouse_43:

(Start: 60 @28175 has 65 MA's), (103, 28322), (115, 28364), (138, 28439), (159, 28520), (162, 28535), (166, 28547), (212, 28697), (240, 28766), (241, 28769), (320, 29003), (328, 29048), (329, 29051), (336, 29078), (337, 29081),

Gene: Gretellyn_65 Start: 44537, Stop: 45700, Start Num: 67

Candidate Starts for Gretellyn_65:

(Start: 67 @44537 has 78 MA's), (Start: 73 @44552 has 1 MA's), (102, 44681), (129, 44771), (130, 44774), (142, 44810), (151, 44843), (190, 44957), (198, 44984), (205, 45023), (206, 45038), (219, 45068), (227, 45098), (236, 45128), (248, 45176), (263, 45251), (279, 45272), (291, 45311), (321, 45413), (330, 45467), (333, 45476), (336, 45485), (341, 45509), (356, 45602), (373, 45692),

Gene: GrootJr_68 Start: 52691, Stop: 51492, Start Num: 64

Candidate Starts for GrootJr_68:

(Start: 64 @52691 has 45 MA's), (144, 52403), (145, 52400), (150, 52379), (151, 52373), (227, 52100), (232, 52088), (236, 52070), (244, 52037), (248, 52022), (266, 51935), (291, 51848), (296, 51833), (306, 51803), (307, 51800), (321, 51746), (331, 51689), (332, 51686), (333, 51683), (336, 51674), (354, 51566), (360, 51542),

Gene: Gumball_57 Start: 43615, Stop: 44745, Start Num: 79

Candidate Starts for Gumball_57:

(34, 43522), (50, 43549), (52, 43552), (Start: 64 @43567 has 45 MA's), (Start: 79 @43615 has 3 MA's), (85, 43654), (88, 43666), (115, 43765), (138, 43828), (151, 43882), (163, 43930), (188, 43996), (221, 44110), (227, 44137), (236, 44167), (247, 44212), (318, 44446), (330, 44512), (333, 44521), (336, 44530), (359, 44656), (373, 44737),

Gene: GuyFagieri_66 Start: 50059, Stop: 48929, Start Num: 64

Candidate Starts for GuyFagieri_66:

(18, 50194), (35, 50089), (Start: 64 @50059 has 45 MA's), (118, 49861), (151, 49738), (153, 49726), (198, 49600), (202, 49573), (248, 49411), (270, 49318), (304, 49246), (333, 49120), (335, 49114), (357, 48988),

Gene: Hager_44 Start: 28317, Stop: 29423, Start Num: 67

Candidate Starts for Hager_44:

(Start: 67 @28317 has 78 MA's), (Start: 75 @28338 has 2 MA's), (130, 28548), (148, 28599), (151, 28611), (175, 28707), (205, 28812), (247, 28962), (321, 29175), (347, 29316), (357, 29373),

Gene: Haunter_43 Start: 28275, Stop: 29381, Start Num: 67

Candidate Starts for Haunter_43:

(Start: 67 @28275 has 78 MA's), (Start: 75 @28296 has 2 MA's), (130, 28506), (151, 28569), (175, 28665), (205, 28770), (247, 28920), (321, 29133), (331, 29190), (347, 29274), (357, 29331),

Gene: Hawkeye_60 Start: 42876, Stop: 44036, Start Num: 64

Candidate Starts for Hawkeye_60:

(41, 42849), (Start: 64 @42876 has 45 MA's), (85, 42963), (115, 43074), (151, 43191), (156, 43212), (197, 43332), (226, 43440), (227, 43446), (232, 43458), (247, 43521), (284, 43638), (307, 43695), (330, 43803), (333, 43812), (335, 43818), (336, 43821),

Gene: HeadNerd_39 Start: 26287, Stop: 27234, Start Num: 60

Candidate Starts for HeadNerd_39:

(Start: 60 @26287 has 65 MA's), (99, 26419), (102, 26431), (103, 26434), (110, 26458), (139, 26554), (151, 26602), (166, 26659), (196, 26731), (241, 26881), (244, 26890), (314, 27085), (328, 27160), (329, 27163), (336, 27190), (337, 27193),

Gene: Helpful_60 Start: 43436, Stop: 44614, Start Num: 64

Candidate Starts for Helpful_60:

(6, 43154), (17, 43247), (Start: 64 @43436 has 45 MA's), (Start: 79 @43484 has 3 MA's), (85, 43523), (88, 43535), (115, 43634), (138, 43697), (151, 43751), (163, 43799), (188, 43865), (221, 43979), (227, 44006), (236, 44036), (247, 44081), (318, 44315), (330, 44381), (333, 44390), (336, 44399), (359, 44525), (373, 44606),

Gene: Henoccus_51 Start: 35844, Stop: 36851, Start Num: 59

Candidate Starts for Henoccus_51:

(7, 35607), (22, 35757), (Start: 59 @35844 has 10 MA's), (103, 36009), (112, 36039), (120, 36075), (140, 36150), (149, 36183), (154, 36207), (169, 36267), (193, 36297), (198, 36315), (199, 36318), (205, 36351), (214, 36387), (244, 36477), (264, 36573), (302, 36672), (306, 36684), (336, 36795), (342, 36828),

Gene: Herb_39 Start: 27510, Stop: 28463, Start Num: 67

Candidate Starts for Herb_39:

(Start: 67 @27510 has 78 MA's), (81, 27567), (103, 27657), (108, 27675), (136, 27765), (149, 27816), (159, 27855), (162, 27870), (167, 27888), (169, 27900), (194, 27948), (223, 28065), (240, 28104), (244, 28116), (314, 28314), (328, 28389), (336, 28419), (337, 28422),

Gene: Hiddenleaf_43 Start: 28072, Stop: 29199, Start Num: 67

Candidate Starts for Hiddenleaf_43:

(2, 27679), (4, 27745), (5, 27760), (Start: 67 @28072 has 78 MA's), (Start: 75 @28093 has 2 MA's), (96, 28189), (130, 28303), (151, 28366), (175, 28462), (205, 28567), (247, 28717), (303, 28885), (321, 28951), (331, 29008), (347, 29092), (357, 29149),

Gene: Hiyaa_41 Start: 29720, Stop: 30685, Start Num: 44

Candidate Starts for Hiyaa_41:

(Start: 44 @29720 has 1 MA's), (77, 29783), (99, 29882), (109, 29918), (127, 29957), (150, 30020), (151, 30026), (194, 30149), (199, 30167), (202, 30191), (240, 30302), (274, 30419), (288, 30458), (313, 30521),

Gene: Htur_43 Start: 27973, Stop: 28986, Start Num: 30

Candidate Starts for Htur_43:

(Start: 30 @27973 has 14 MA's), (103, 28183), (125, 28252), (151, 28336), (167, 28399), (198, 28471), (199, 28474), (212, 28540), (214, 28543), (250, 28645), (251, 28651), (282, 28735), (286, 28750), (302, 28801), (316, 28849), (328, 28912),

Gene: HubbaBubba_62 Start: 48109, Stop: 47129, Start Num: 127

Candidate Starts for HubbaBubba_62:

(127, 48109), (134, 48085), (144, 48046), (145, 48043), (151, 48016), (155, 47998), (169, 47941), (227, 47743), (232, 47731), (248, 47665), (254, 47638), (265, 47581), (291, 47485), (306, 47440), (307, 47437), (312, 47425), (321, 47383), (333, 47320), (336, 47311), (353, 47209), (354, 47203), (360, 47179),

Gene: Huckleberry_39 Start: 26270, Stop: 27217, Start Num: 60

Candidate Starts for Huckleberry_39:

(Start: 60 @26270 has 65 MA's), (99, 26402), (102, 26414), (103, 26417), (110, 26441), (139, 26537), (151, 26585), (166, 26642), (196, 26714), (198, 26723), (241, 26864), (244, 26873), (275, 26960), (314, 27068), (328, 27143), (329, 27146), (336, 27173), (337, 27176),

Gene: HunterDalle_39 Start: 27432, Stop: 28382, Start Num: 67

Candidate Starts for HunterDalle_39:

(32, 27378), (Start: 67 @27432 has 78 MA's), (103, 27579), (108, 27597), (136, 27687), (149, 27738), (159, 27777), (162, 27792), (167, 27810), (169, 27822), (194, 27870), (223, 27987), (240, 28026), (244, 28038), (275, 28125), (293, 28173), (314, 28233), (328, 28308), (329, 28311), (336, 28338), (337, 28341),

Gene: Huntingdon_41 Start: 27893, Stop: 28828, Start Num: 60

Candidate Starts for Huntingdon_41:

(Start: 60 @27893 has 65 MA's), (103, 28040), (108, 28058), (115, 28082), (138, 28157), (151, 28208), (159, 28238), (162, 28253), (166, 28265), (212, 28415), (240, 28484), (241, 28487), (286, 28598), (328, 28754), (329, 28757), (336, 28784), (337, 28787),

Gene: IDyn_65 Start: 49575, Stop: 48376, Start Num: 67

Candidate Starts for IDyn_65:

(48, 49602), (Start: 67 @49575 has 78 MA's), (127, 49356), (134, 49332), (144, 49293), (145, 49290), (151, 49263), (155, 49245), (169, 49188), (227, 48990), (232, 48978), (248, 48912), (254, 48885), (265, 48828), (291, 48732), (306, 48687), (307, 48684), (312, 48672), (321, 48630), (333, 48567), (336, 48558), (353, 48456), (354, 48450), (360, 48426),

Gene: Immaculata_41 Start: 27533, Stop: 28480, Start Num: 60

Candidate Starts for Immaculata_41:

(Start: 60 @27533 has 65 MA's), (83, 27602), (99, 27665), (102, 27677), (103, 27680), (110, 27704), (139, 27800), (151, 27848), (159, 27878), (166, 27905), (196, 27977), (241, 28127), (244, 28136), (275, 28223), (293, 28271), (314, 28331), (328, 28406), (329, 28409), (336, 28436), (337, 28439),

Gene: Indlulamithi_68 Start: 48569, Stop: 49600, Start Num: 67

Candidate Starts for Indlulamithi_68:

(Start: 67 @48569 has 78 MA's), (Start: 73 @48584 has 1 MA's), (93, 48671), (96, 48686), (101, 48710), (Start: 128 @48794 has 1 MA's), (142, 48845), (154, 48896), (170, 48959), (190, 48995), (196, 49013), (197, 49019), (206, 49076), (236, 49166), (247, 49211), (259, 49250), (319, 49316), (331, 49379), (333, 49385), (340, 49415),

Gene: Intolerant_48 Start: 35879, Stop: 36877, Start Num: 59

Candidate Starts for Intolerant_48:

(1, 35486), (7, 35642), (16, 35720), (Start: 55 @35873 has 1 MA's), (Start: 59 @35879 has 10 MA's), (103, 36044), (110, 36068), (140, 36176), (149, 36209), (154, 36233), (169, 36293), (193, 36323), (195, 36329), (198, 36341), (199, 36344), (205, 36377), (214, 36413), (244, 36503), (264, 36599), (302, 36698), (306, 36710), (342, 36854),

Gene: JDawG_42 Start: 28489, Stop: 29616, Start Num: 67

Candidate Starts for JDawG_42:

(2, 28096), (5, 28177), (Start: 67 @28489 has 78 MA's), (Start: 75 @28510 has 2 MA's), (130, 28720), (151, 28783), (175, 28879), (205, 28984), (247, 29134), (303, 29302), (321, 29368), (347, 29509), (357, 29566),

Gene: JackieB_51 Start: 35683, Stop: 36690, Start Num: 59

Candidate Starts for JackieB_51:

(7, 35446), (22, 35596), (Start: 59 @35683 has 10 MA's), (103, 35848), (112, 35878), (120, 35914), (140, 35989), (149, 36022), (154, 36046), (169, 36106), (193, 36136), (198, 36154), (199, 36157), (205, 36190), (214, 36226), (244, 36316), (264, 36412), (302, 36511), (306, 36523), (328, 36601), (336, 36634), (342, 36667),

Gene: Jalebi_64 Start: 44890, Stop: 46053, Start Num: 67

Candidate Starts for Jalebi_64:

(Start: 67 @44890 has 78 MA's), (Start: 73 @44905 has 1 MA's), (102, 45034), (129, 45124), (130, 45127), (142, 45163), (151, 45196), (190, 45310), (198, 45337), (205, 45376), (206, 45391), (219, 45421), (227, 45451), (236, 45481), (248, 45529), (291, 45664), (321, 45766), (330, 45820), (333, 45829), (336, 45838), (341, 45862), (356, 45955), (373, 46045),

Gene: Jera_43 Start: 26765, Stop: 27778, Start Num: 30

Candidate Starts for Jera_43:

(Start: 30 @26765 has 14 MA's), (82, 26894), (103, 26975), (125, 27044), (151, 27128), (172, 27212), (198, 27263), (212, 27332), (214, 27335), (250, 27437), (251, 27443), (282, 27527), (286, 27542), (316, 27641), (328, 27704),

Gene: Jifall16_66 Start: 53318, Stop: 52119, Start Num: 64

Candidate Starts for Jifall16_66:

(Start: 64 @53318 has 45 MA's), (144, 53030), (145, 53027), (150, 53006), (151, 53000), (227, 52727), (232, 52715), (236, 52697), (244, 52664), (248, 52649), (266, 52562), (291, 52475), (296, 52460), (306, 52430), (307, 52427), (321, 52373), (331, 52316), (332, 52313), (333, 52310), (336, 52301), (354, 52193), (360, 52169),

Gene: JingleBells_43 Start: 28193, Stop: 29350, Start Num: 67

Candidate Starts for JingleBells_43:

(2, 27800), (5, 27881), (Start: 67 @28193 has 78 MA's), (Start: 75 @28214 has 2 MA's), (130, 28424), (151, 28487), (175, 28583), (205, 28688), (247, 28838), (301, 29030), (303, 29036), (321, 29102), (347, 29243), (357, 29300),

Gene: Joann_42 Start: 28143, Stop: 29078, Start Num: 60

Candidate Starts for Joann_42:

(Start: 60 @28143 has 65 MA's), (103, 28290), (108, 28308), (115, 28332), (138, 28407), (159, 28488), (162, 28503), (166, 28515), (240, 28734), (241, 28737), (314, 28929), (320, 28959), (328, 29004), (329, 29007), (336, 29034), (337, 29037),

Gene: Johann_43 Start: 27572, Stop: 28585, Start Num: 30

Candidate Starts for Johann_43:

(21, 27527), (Start: 30 @27572 has 14 MA's), (82, 27701), (103, 27782), (125, 27851), (151, 27935), (166, 27992), (198, 28070), (212, 28139), (214, 28142), (243, 28217), (250, 28244), (251, 28250), (282, 28334), (286, 28349), (302, 28400), (316, 28448), (328, 28511),

Gene: Jumboset_42 Start: 27650, Stop: 28597, Start Num: 60

Candidate Starts for Jumboset_42:

(Start: 60 @27650 has 65 MA's), (99, 27782), (102, 27794), (103, 27797), (110, 27821), (139, 27917), (151, 27965), (159, 27995), (166, 28022), (196, 28094), (241, 28244), (244, 28253), (275, 28340), (293, 28388), (314, 28448), (328, 28523), (329, 28526), (336, 28553), (337, 28556),

Gene: Kabluna_69 Start: 52277, Stop: 51069, Start Num: 66

Candidate Starts for Kabluna_69:

(Start: 66 @52277 has 10 MA's), (127, 52055), (134, 52031), (138, 52016), (144, 51992), (145, 51989), (151, 51962), (169, 51887), (202, 51770), (232, 51674), (248, 51608), (269, 51497), (285, 51449), (291, 51428), (305, 51386), (312, 51368), (321, 51326), (330, 51272), (333, 51263), (336, 51254), (354, 51146),

Gene: Kalizoi_42 Start: 27475, Stop: 28422, Start Num: 60

Candidate Starts for Kalizoi_42:

(Start: 60 @27475 has 65 MA's), (83, 27544), (99, 27607), (102, 27619), (103, 27622), (110, 27646), (139, 27742), (151, 27790), (159, 27820), (166, 27847), (196, 27919), (241, 28069), (244, 28078), (275, 28165), (293, 28213), (314, 28273), (328, 28348), (329, 28351), (336, 28378), (337, 28381),

Gene: KandZ_56 Start: 43281, Stop: 44411, Start Num: 79

Candidate Starts for KandZ_56:

(Start: 64 @43233 has 45 MA's), (Start: 79 @43281 has 3 MA's), (85, 43320), (88, 43332), (115, 43431), (138, 43494), (151, 43548), (163, 43596), (188, 43662), (221, 43776), (227, 43803), (236, 43833), (247, 43878), (318, 44112), (330, 44178), (333, 44187), (336, 44196), (359, 44322), (373, 44403),

Gene: Karate_42 Start: 28845, Stop: 29999, Start Num: 67

Candidate Starts for Karate_42:

(Start: 67 @28845 has 78 MA's), (Start: 75 @28866 has 2 MA's), (130, 29076), (151, 29139), (175, 29235), (205, 29340), (247, 29490), (280, 29616), (291, 29646), (321, 29751), (347, 29892), (357,

29949),

Gene: Kate_44 Start: 28852, Stop: 30006, Start Num: 67

Candidate Starts for Kate_44:

(2, 28453), (Start: 67 @28852 has 78 MA's), (Start: 75 @28873 has 2 MA's), (130, 29083), (151, 29146), (175, 29242), (205, 29347), (247, 29497), (266, 29587), (280, 29623), (291, 29653), (321, 29758), (331, 29815), (347, 29899), (357, 29956),

Gene: Keanu_40 Start: 29418, Stop: 30383, Start Num: 42

Candidate Starts for Keanu_40:

(Start: 42 @29418 has 2 MA's), (99, 29580), (109, 29616), (110, 29619), (127, 29655), (150, 29718), (151, 29724), (194, 29847), (199, 29865), (202, 29889), (207, 29919), (238, 29988), (240, 30000), (256, 30060), (274, 30117), (288, 30156), (313, 30219),

Gene: KidneyBean_67 Start: 53442, Stop: 52243, Start Num: 64

Candidate Starts for KidneyBean_67:

(Start: 64 @53442 has 45 MA's), (144, 53154), (145, 53151), (150, 53130), (151, 53124), (227, 52851), (232, 52839), (236, 52821), (244, 52788), (248, 52773), (266, 52686), (291, 52599), (296, 52584), (306, 52554), (307, 52551), (321, 52497), (331, 52440), (332, 52437), (333, 52434), (336, 52425), (354, 52317), (360, 52293),

Gene: Kimchi1738_70 Start: 50509, Stop: 49391, Start Num: 70

Candidate Starts for Kimchi1738_70:

(Start: 70 @50509 has 10 MA's), (101, 50374), (118, 50323), (151, 50209), (161, 50167), (169, 50134), (193, 50071), (196, 50062), (198, 50053), (205, 50017), (219, 49963), (263, 49780), (328, 49591), (333, 49570), (340, 49540), (352, 49468), (355, 49453), (356, 49444),

Gene: KingBob_39 Start: 27511, Stop: 28464, Start Num: 67

Candidate Starts for KingBob_39:

(Start: 67 @27511 has 78 MA's), (81, 27568), (103, 27658), (108, 27676), (136, 27766), (149, 27817), (159, 27856), (162, 27871), (167, 27889), (169, 27901), (194, 27949), (223, 28066), (240, 28105), (244, 28117), (314, 28315), (328, 28390), (336, 28420), (337, 28423),

Gene: Kittykat_40 Start: 26532, Stop: 27479, Start Num: 60

Candidate Starts for Kittykat_40:

(Start: 60 @26532 has 65 MA's), (83, 26601), (99, 26664), (102, 26676), (103, 26679), (110, 26703), (139, 26799), (151, 26847), (166, 26904), (196, 26976), (293, 27270), (314, 27330), (328, 27405), (329, 27408), (336, 27435), (337, 27438),

Gene: Konstantine_71 Start: 50914, Stop: 52203, Start Num: 46

Candidate Starts for Konstantine_71:

(29, 50875), (Start: 39 @50899 has 2 MA's), (Start: 46 @50914 has 7 MA's), (86, 51028), (91, 51046), (101, 51088), (150, 51262), (151, 51268), (163, 51319), (192, 51433), (197, 51451), (198, 51454), (200, 51469), (205, 51490), (241, 51622), (243, 51628), (300, 51811), (307, 51829), (321, 51883), (332, 51943), (341, 51979), (357, 52075),

Gene: Korra_41 Start: 27487, Stop: 28434, Start Num: 60

Candidate Starts for Korra_41:

(Start: 60 @27487 has 65 MA's), (99, 27619), (102, 27631), (103, 27634), (110, 27658), (139, 27754), (151, 27802), (159, 27832), (166, 27859), (196, 27931), (241, 28081), (244, 28090), (275, 28177), (293, 28225), (314, 28285), (328, 28360), (329, 28363), (336, 28390), (337, 28393),

Gene: Kors_47 Start: 29786, Stop: 30883, Start Num: 69

Candidate Starts for Kors_47:

(Start: 36 @29732 has 1 MA's), (Start: 69 @29786 has 2 MA's), (Start: 73 @29789 has 1 MA's), (Start: 75 @29795 has 2 MA's), (130, 30005), (132, 30011), (148, 30056), (151, 30068), (167, 30131), (175, 30164), (205, 30269), (250, 30431), (303, 30566), (312, 30590), (350, 30782), (357, 30830),

Gene: Krampus_43 Start: 28852, Stop: 30006, Start Num: 67

Candidate Starts for Krampus_43:

(2, 28453), (Start: 67 @28852 has 78 MA's), (Start: 75 @28873 has 2 MA's), (130, 29083), (151, 29146), (175, 29242), (205, 29347), (247, 29497), (266, 29587), (280, 29623), (291, 29653), (321, 29758), (331, 29815), (347, 29899), (357, 29956),

Gene: Kurt_66 Start: 53312, Stop: 52113, Start Num: 64

Candidate Starts for Kurt_66:

(Start: 64 @53312 has 45 MA's), (144, 53024), (145, 53021), (150, 53000), (151, 52994), (227, 52721), (232, 52709), (236, 52691), (244, 52658), (248, 52643), (266, 52556), (291, 52469), (296, 52454), (306, 52424), (307, 52421), (321, 52367), (331, 52310), (332, 52307), (333, 52304), (336, 52295), (354, 52187), (360, 52163),

Gene: Labelle_80 Start: 52685, Stop: 53917, Start Num: 57

Candidate Starts for Labelle_80:

(Start: 57 @52685 has 3 MA's), (80, 52739), (87, 52778), (88, 52781), (91, 52790), (99, 52823), (105, 52847), (148, 53012), (151, 53024), (171, 53105), (193, 53189), (199, 53210), (205, 53252), (243, 53390), (255, 53441), (265, 53492), (290, 53528), (307, 53576), (321, 53630), (333, 53693), (361, 53861), (370, 53903),

Gene: Lakshmi_42 Start: 28138, Stop: 29085, Start Num: 60

Candidate Starts for Lakshmi_42:

(Start: 60 @28138 has 65 MA's), (103, 28285), (115, 28327), (138, 28402), (159, 28483), (162, 28498), (166, 28510), (212, 28660), (240, 28729), (241, 28732), (320, 28966), (328, 29011), (329, 29014), (336, 29041), (337, 29044),

Gene: Lambo_63 Start: 43490, Stop: 44707, Start Num: 67

Candidate Starts for Lambo_63:

(Start: 67 @43490 has 78 MA's), (Start: 73 @43505 has 1 MA's), (102, 43634), (129, 43724), (130, 43727), (142, 43763), (151, 43796), (190, 43910), (198, 43937), (205, 43976), (206, 43991), (219, 44021), (227, 44051), (236, 44081), (248, 44129), (321, 44420), (330, 44474), (333, 44483), (336, 44492), (341, 44516), (356, 44609), (373, 44699),

Gene: Lasagna_38 Start: 26108, Stop: 27058, Start Num: 60

Candidate Starts for Lasagna_38:

(Start: 60 @26108 has 65 MA's), (99, 26240), (102, 26252), (103, 26255), (110, 26279), (139, 26375), (151, 26423), (154, 26438), (166, 26480), (171, 26504), (196, 26552), (234, 26678), (240, 26702), (241, 26705), (244, 26714), (293, 26849), (314, 26909), (328, 26984), (336, 27014), (337, 27017),

Gene: LazerLemon_51 Start: 36312, Stop: 37310, Start Num: 59

Candidate Starts for LazerLemon_51:

(7, 36060), (11, 36087), (15, 36132), (16, 36135), (Start: 59 @36312 has 10 MA's), (103, 36477), (115, 36519), (140, 36609), (149, 36642), (154, 36666), (193, 36756), (198, 36774), (199, 36777), (214, 36846), (244, 36936), (252, 36975), (264, 37032), (306, 37143), (334, 37248), (342, 37287),

Gene: Lennox_39 Start: 26316, Stop: 27266, Start Num: 60

Candidate Starts for Lennox_39:

(Start: 60 @26316 has 65 MA's), (99, 26448), (102, 26460), (103, 26463), (110, 26487), (139, 26583), (151, 26631), (154, 26646), (166, 26688), (171, 26712), (194, 26754), (196, 26760), (234, 26886), (240, 26910), (241, 26913), (244, 26922), (293, 27057), (314, 27117), (328, 27192), (336, 27222), (337, 27225),

Gene: Leopard_73 Start: 50916, Stop: 52133, Start Num: 63

Candidate Starts for Leopard_73:

(Start: 63 @50916 has 3 MA's), (Start: 75 @50943 has 2 MA's), (84, 50997), (97, 51042), (114, 51108), (117, 51120), (133, 51168), (137, 51180), (144, 51210), (145, 51213), (151, 51240), (158, 51267), (190, 51396), (217, 51516), (219, 51522), (243, 51612), (252, 51654), (258, 51672), (261, 51690), (289, 51753), (318, 51837), (333, 51912), (335, 51918), (336, 51921), (347, 51990), (350, 51999), (358, 52044), (366, 52101),

Gene: LilStuart_39 Start: 26319, Stop: 27269, Start Num: 60

Candidate Starts for LilStuart_39:

(Start: 60 @26319 has 65 MA's), (99, 26451), (102, 26463), (103, 26466), (110, 26490), (139, 26586), (151, 26634), (166, 26691), (171, 26715), (194, 26757), (196, 26763), (234, 26889), (240, 26913), (241, 26916), (244, 26925), (293, 27060), (314, 27120), (328, 27195), (336, 27225), (337, 27228),

Gene: Lila22_69 Start: 44442, Stop: 45659, Start Num: 67

Candidate Starts for Lila22_69:

(Start: 67 @44442 has 78 MA's), (Start: 73 @44457 has 1 MA's), (102, 44586), (129, 44676), (130, 44679), (142, 44715), (151, 44748), (190, 44862), (198, 44889), (205, 44928), (206, 44943), (219, 44973), (227, 45003), (236, 45033), (248, 45081), (330, 45426), (333, 45435), (336, 45444), (341, 45468), (356, 45561), (373, 45651),

Gene: LilyPad_56 Start: 41683, Stop: 42828, Start Num: 64

Candidate Starts for LilyPad_56:

(Start: 64 @41683 has 45 MA's), (Start: 70 @41692 has 10 MA's), (106, 41818), (110, 41830), (168, 42007), (198, 42112), (243, 42286), (246, 42298), (289, 42430), (307, 42478), (314, 42499), (315, 42508), (317, 42514), (321, 42532), (323, 42544), (329, 42577), (332, 42592), (333, 42595), (335, 42601), (343, 42646), (355, 42712), (357, 42724),

Gene: Litotes_41 Start: 27533, Stop: 28480, Start Num: 60

Candidate Starts for Litotes_41:

(Start: 60 @27533 has 65 MA's), (102, 27677), (103, 27680), (107, 27695), (115, 27722), (135, 27785), (151, 27848), (162, 27893), (166, 27905), (171, 27929), (212, 28055), (240, 28124), (241, 28127), (275, 28223), (293, 28271), (314, 28331), (328, 28406), (336, 28436), (337, 28439),

Gene: LittleFella_61 Start: 43303, Stop: 44364, Start Num: 61

Candidate Starts for LittleFella_61:

(Start: 61 @43303 has 4 MA's), (Start: 64 @43309 has 45 MA's), (Start: 70 @43318 has 10 MA's), (89, 43387), (130, 43528), (131, 43531), (168, 43663), (178, 43696), (197, 43765), (219, 43852), (248, 43960), (329, 44113), (332, 44128), (333, 44131), (338, 44152), (355, 44248), (357, 44260), (368, 44323), (372, 44341),

Gene: Lizz_66 Start: 47161, Stop: 46163, Start Num: 68

Candidate Starts for Lizz_66:

(Start: 42 @47212 has 2 MA's), (Start: 68 @47161 has 7 MA's), (74, 47149), (151, 46870), (152, 46867), (189, 46738), (198, 46711), (205, 46675), (227, 46600), (232, 46588), (247, 46525), (326, 46384), (333, 46351), (336, 46342), (347, 46270), (349, 46264), (362, 46180),

Gene: Lollipop1437_70 Start: 53959, Stop: 52760, Start Num: 56

Candidate Starts for Lollipop1437_70:

(Start: 56 @53959 has 2 MA's), (Start: 61 @53950 has 4 MA's), (115, 53752), (143, 53659), (144, 53656), (145, 53653), (151, 53626), (155, 53608), (169, 53551), (232, 53356), (233, 53353), (236, 53338), (248, 53290), (272, 53176), (278, 53164), (291, 53116), (307, 53068), (321, 53014), (333, 52951), (336, 52942), (356, 52822),

Gene: LuckyLeo_62 Start: 43297, Stop: 44457, Start Num: 67

Candidate Starts for LuckyLeo_62:

(Start: 67 @43297 has 78 MA's), (Start: 73 @43312 has 1 MA's), (102, 43441), (129, 43531), (145, 43576), (151, 43603), (198, 43744), (206, 43795), (219, 43825), (227, 43855), (248, 43933), (261, 43993), (263, 44008), (273, 44029), (291, 44068), (292, 44074), (322, 44176), (330, 44224), (333, 44233), (341, 44266), (356, 44359), (373, 44449),

Gene: Lucy_39 Start: 26316, Stop: 27266, Start Num: 60

Candidate Starts for Lucy_39:

(Start: 60 @26316 has 65 MA's), (99, 26448), (102, 26460), (103, 26463), (110, 26487), (139, 26583), (151, 26631), (154, 26646), (166, 26688), (171, 26712), (194, 26754), (196, 26760), (234, 26886), (240, 26910), (241, 26913), (244, 26922), (293, 27057), (314, 27117), (328, 27192), (336, 27222), (337, 27225),

Gene: MacGully_76 Start: 53240, Stop: 52086, Start Num: 64

Candidate Starts for MacGully_76:

(35, 53291), (Start: 64 @53240 has 45 MA's), (118, 53042), (145, 52946), (151, 52919), (153, 52907), (163, 52871), (198, 52781), (247, 52595), (248, 52592), (258, 52550), (269, 52490), (307, 52394), (333, 52277), (335, 52271), (356, 52148), (357, 52145),

Gene: Madi_54 Start: 40504, Stop: 41709, Start Num: 33

Candidate Starts for Madi_54:

(Start: 33 @40504 has 4 MA's), (Start: 64 @40564 has 45 MA's), (Start: 70 @40573 has 10 MA's), (110, 40711), (124, 40735), (168, 40888), (178, 40921), (243, 41167), (244, 41170), (245, 41176), (249, 41191), (289, 41311), (307, 41359), (315, 41389), (317, 41395), (323, 41425), (329, 41458), (333, 41476), (335, 41482), (350, 41563), (355, 41593), (357, 41605), (368, 41668),

Gene: Madruga_79 Start: 52639, Stop: 53871, Start Num: 57

Candidate Starts for Madruga_79:

(Start: 57 @52639 has 3 MA's), (80, 52693), (88, 52735), (91, 52744), (99, 52777), (105, 52801), (148, 52966), (151, 52978), (171, 53059), (193, 53143), (199, 53164), (205, 53206), (243, 53344), (255, 53395), (265, 53446), (290, 53482), (307, 53530), (321, 53584), (333, 53647), (361, 53815), (370, 53857),

Gene: Makoto_39 Start: 26327, Stop: 27277, Start Num: 60

Candidate Starts for Makoto_39:

(Start: 60 @26327 has 65 MA's), (99, 26459), (102, 26471), (103, 26474), (110, 26498), (139, 26594), (151, 26642), (154, 26657), (166, 26699), (171, 26723), (194, 26765), (196, 26771), (234, 26897), (240, 26921), (241, 26924), (244, 26933), (293, 27068), (314, 27128), (328, 27203), (336, 27233), (337, 27236),

Gene: MamaPearl_40 Start: 27489, Stop: 28439, Start Num: 60

Candidate Starts for MamaPearl_40:

(Start: 60 @27489 has 65 MA's), (99, 27621), (103, 27636), (107, 27651), (110, 27660), (139, 27756), (151, 27804), (154, 27819), (166, 27861), (171, 27885), (196, 27933), (198, 27942), (234, 28059), (241, 28086), (244, 28095), (314, 28290), (316, 28302), (328, 28365), (329, 28368), (336, 28395), (337, 28398),

Gene: Mareelih_165 Start: 94021, Stop: 93029, Start Num: 47

Candidate Starts for Mareelih_165:

(35, 94045), (Start: 47 @94021 has 4 MA's), (82, 93919), (100, 93847), (151, 93694), (171, 93604), (210, 93496), (215, 93487), (224, 93457), (225, 93454), (228, 93445), (239, 93400), (246, 93376), (265, 93295), (296, 93274), (309, 93232), (328, 93145), (329, 93142), (336, 93115), (347, 93052), (348, 93049),

Gene: Maria1952_38 Start: 27510, Stop: 28463, Start Num: 67

Candidate Starts for Maria1952_38:

(Start: 67 @27510 has 78 MA's), (81, 27567), (103, 27657), (108, 27675), (136, 27765), (149, 27816), (159, 27855), (162, 27870), (167, 27888), (169, 27900), (194, 27948), (223, 28065), (240, 28104), (244, 28116), (314, 28314), (328, 28389), (336, 28419), (337, 28422),

Gene: Marietta_68 Start: 49875, Stop: 48676, Start Num: 67

Candidate Starts for Marietta_68:

(Start: 67 @49875 has 78 MA's), (127, 49656), (134, 49632), (144, 49593), (145, 49590), (151, 49563), (155, 49545), (169, 49488), (227, 49290), (248, 49212), (254, 49185), (265, 49128), (266, 49125), (291, 49032), (306, 48987), (307, 48984), (312, 48972), (321, 48930), (333, 48867), (336, 48858), (353, 48756), (354, 48750), (360, 48726),

Gene: Marky_53 Start: 36621, Stop: 37619, Start Num: 59

Candidate Starts for Marky_53:

(9, 36390), (26, 36564), (Start: 59 @36621 has 10 MA's), (103, 36786), (116, 36831), (126, 36867), (140, 36918), (149, 36951), (195, 37071), (199, 37086), (202, 37110), (209, 37146), (244, 37263), (257, 37311), (303, 37437), (306, 37446), (333, 37548), (342, 37590),

Gene: Maselop_67 Start: 50089, Stop: 48926, Start Num: 64

Candidate Starts for Maselop_67:

(18, 50227), (35, 50119), (Start: 64 @50089 has 45 MA's), (118, 49891), (151, 49768), (153, 49756), (198, 49630), (202, 49603), (248, 49441), (283, 49297), (299, 49258), (307, 49234), (333, 49117), (335, 49111), (357, 48985),

Gene: MeganNoll_41 Start: 27707, Stop: 28654, Start Num: 60

Candidate Starts for MeganNoll_41:

(Start: 60 @27707 has 65 MA's), (99, 27839), (102, 27851), (103, 27854), (110, 27878), (139, 27974), (151, 28022), (159, 28052), (166, 28079), (196, 28151), (241, 28301), (244, 28310), (275, 28397), (293, 28445), (314, 28505), (328, 28580), (336, 28610), (337, 28613),

Gene: Megatron06_70 Start: 50774, Stop: 51949, Start Num: 86

Candidate Starts for Megatron06_70:

(29, 50621), (Start: 39 @50645 has 2 MA's), (Start: 46 @50660 has 7 MA's), (86, 50774), (88, 50783), (91, 50792), (101, 50834), (150, 51008), (151, 51014), (163, 51065), (192, 51179), (197, 51197), (198, 51200), (200, 51215), (205, 51236), (241, 51368), (243, 51374), (284, 51512), (300, 51557), (307, 51575), (321, 51629), (332, 51689), (341, 51725), (357, 51821),

Gene: MerCougar_69 Start: 54002, Stop: 52794, Start Num: 66

Candidate Starts for MerCougar_69:

(Start: 66 @54002 has 10 MA's), (127, 53780), (134, 53756), (144, 53717), (145, 53714), (151, 53687), (169, 53612), (232, 53399), (248, 53333), (266, 53246), (269, 53222), (285, 53174), (307, 53105), (312, 53093), (321, 53051), (330, 52997), (333, 52988), (336, 52979), (354, 52871), (356, 52859),

Gene: Microdon_49 Start: 35690, Stop: 36691, Start Num: 59

Candidate Starts for Microdon_49:

(7, 35453), (8, 35459), (11, 35480), (16, 35531), (Start: 59 @35690 has 10 MA's), (103, 35855), (108, 35873), (110, 35879), (140, 35990), (149, 36023), (154, 36047), (156, 36053), (169, 36107), (193, 36137), (195, 36143), (198, 36155), (199, 36158), (205, 36191), (214, 36227), (244, 36317), (264, 36413), (294, 36485), (306, 36524), (333, 36626), (342, 36668),

Gene: Milani_41 Start: 26576, Stop: 27577, Start Num: 30

Candidate Starts for Milani_41:

(Start: 30 @26576 has 14 MA's), (82, 26705), (103, 26786), (112, 26816), (151, 26927), (214, 27134), (219, 27146), (250, 27236), (251, 27242), (282, 27326), (286, 27341), (302, 27392), (328, 27503),

Gene: Mimi_109 Start: 82842, Stop: 83813, Start Num: 49

Candidate Starts for Mimi_109:

(Start: 49 @82842 has 2 MA's), (Start: 64 @82866 has 45 MA's), (72, 82887), (95, 82986), (98, 83001), (103, 83025), (113, 83058), (151, 83175), (154, 83190), (190, 83286), (193, 83295), (222, 83400), (225, 83415), (228, 83424), (249, 83499), (260, 83541), (297, 83592), (303, 83613), (328, 83721), (336, 83751),

Gene: Misaeng_41 Start: 28126, Stop: 29073, Start Num: 60

Candidate Starts for Misaeng_41:

(Start: 60 @28126 has 65 MA's), (103, 28273), (108, 28291), (115, 28315), (126, 28351), (138, 28390), (151, 28441), (159, 28471), (162, 28486), (166, 28498), (212, 28648), (240, 28717), (241, 28720), (320, 28954), (328, 28999), (329, 29002), (336, 29029), (337, 29032),

Gene: MoiGyank_71 Start: 44818, Stop: 45981, Start Num: 67

Candidate Starts for MoiGyank_71:

(Start: 67 @44818 has 78 MA's), (Start: 73 @44833 has 1 MA's), (102, 44962), (129, 45052), (130, 45055), (142, 45091), (151, 45124), (190, 45238), (198, 45265), (205, 45304), (206, 45319), (219, 45349), (227, 45379), (236, 45409), (248, 45457), (291, 45592), (321, 45694), (330, 45748), (333, 45757), (336, 45766), (341, 45790), (356, 45883), (373, 45973),

Gene: Moki_39 Start: 26432, Stop: 27379, Start Num: 60

Candidate Starts for Moki_39:

(Start: 60 @26432 has 65 MA's), (99, 26564), (102, 26576), (103, 26579), (110, 26603), (139, 26699), (151, 26747), (166, 26804), (196, 26876), (198, 26885), (241, 27026), (244, 27035), (275, 27122), (314, 27230), (328, 27305), (329, 27308), (336, 27335), (337, 27338),

Gene: MontyDev_69 Start: 51361, Stop: 52530, Start Num: 67

Candidate Starts for MontyDev_69:

(Start: 67 @51361 has 78 MA's), (Start: 73 @51376 has 1 MA's), (81, 51418), (88, 51451), (147, 51652), (151, 51667), (190, 51799), (205, 51862), (206, 51877), (242, 51994), (303, 52195), (305, 52201), (307, 52207), (308, 52210), (331, 52318), (333, 52324), (357, 52456), (367, 52516),

Gene: Mopey_58 Start: 43111, Stop: 44289, Start Num: 64

Candidate Starts for Mopey_58:

(6, 42829), (10, 42859), (17, 42922), (Start: 64 @43111 has 45 MA's), (Start: 79 @43159 has 3 MA's), (85, 43198), (88, 43210), (115, 43309), (138, 43372), (151, 43426), (163, 43474), (188, 43540), (221, 43654), (227, 43681), (236, 43711), (247, 43756), (318, 43990), (330, 44056), (333, 44065), (336, 44074), (359, 44200), (373, 44281),

Gene: MortySmith_41 Start: 27877, Stop: 29034, Start Num: 67

Candidate Starts for MortySmith_41:

(2, 27484), (5, 27565), (Start: 67 @27877 has 78 MA's), (Start: 75 @27898 has 2 MA's), (130, 28108), (151, 28171), (175, 28267), (205, 28372), (247, 28522), (301, 28714), (303, 28720), (321, 28786), (347, 28927), (357, 28984),

Gene: MrGloopy_42 Start: 27636, Stop: 28583, Start Num: 60

Candidate Starts for MrGloopy_42:

(Start: 60 @27636 has 65 MA's), (99, 27768), (102, 27780), (103, 27783), (110, 27807), (139, 27903), (151, 27951), (159, 27981), (166, 28008), (196, 28080), (241, 28230), (244, 28239), (275, 28326), (293, 28374), (314, 28434), (328, 28509), (329, 28512), (336, 28539), (337, 28542),

Gene: MrMiyagi_76 Start: 48172, Stop: 49212, Start Num: 64

Candidate Starts for MrMiyagi_76:

(41, 48133), (Start: 64 @48172 has 45 MA's), (Start: 67 @48181 has 78 MA's), (Start: 73 @48196 has 1 MA's), (78, 48217), (96, 48298), (Start: 128 @48406 has 1 MA's), (142, 48457), (152, 48496), (163, 48541), (166, 48550), (202, 48664), (206, 48688), (240, 48799), (310, 48892), (321, 48934), (333, 48997), (340, 49027), (356, 49126),

Gene: NadineRae_67 Start: 49484, Stop: 48285, Start Num: 67

Candidate Starts for NadineRae_67:

(Start: 67 @49484 has 78 MA's), (127, 49265), (134, 49241), (144, 49202), (145, 49199), (151, 49172), (155, 49154), (169, 49097), (227, 48899), (248, 48821), (254, 48794), (291, 48641), (306, 48596), (307, 48593), (312, 48581), (321, 48539), (333, 48476), (336, 48467), (353, 48365), (354, 48359), (360, 48335),

Gene: Nancia_39 Start: 26343, Stop: 27293, Start Num: 60

Candidate Starts for Nancia_39:

(Start: 60 @26343 has 65 MA's), (77, 26376), (83, 26412), (99, 26475), (102, 26487), (103, 26490), (110, 26514), (139, 26610), (151, 26658), (154, 26673), (166, 26715), (171, 26739), (196, 26787), (234, 26913), (240, 26937), (241, 26940), (244, 26949), (293, 27084), (314, 27144), (328, 27219), (329, 27222), (336, 27249), (337, 27252),

Gene: NarutoRun_43 Start: 28820, Stop: 29974, Start Num: 67

Candidate Starts for NarutoRun_43:

(2, 28421), (Start: 67 @28820 has 78 MA's), (Start: 75 @28841 has 2 MA's), (87, 28910), (130, 29051), (151, 29114), (175, 29210), (205, 29315), (247, 29465), (266, 29555), (280, 29591), (291, 29621), (321, 29726), (331, 29783), (347, 29867), (357, 29924),

Gene: NatB6_66 Start: 52381, Stop: 51182, Start Num: 64

Candidate Starts for NatB6_66:

(Start: 64 @52381 has 45 MA's), (144, 52093), (145, 52090), (150, 52069), (151, 52063), (227, 51790), (232, 51778), (236, 51760), (244, 51727), (248, 51712), (266, 51625), (291, 51538), (296, 51523), (306, 51493), (307, 51490), (321, 51436), (331, 51379), (332, 51376), (333, 51373), (336, 51364), (354, 51256), (360, 51232),

Gene: Neptune_43 Start: 28820, Stop: 29974, Start Num: 67

Candidate Starts for Neptune_43:

(2, 28421), (Start: 67 @28820 has 78 MA's), (Start: 75 @28841 has 2 MA's), (130, 29051), (151, 29114), (175, 29210), (205, 29315), (247, 29465), (266, 29555), (280, 29591), (291, 29621), (321, 29726), (331, 29783), (347, 29867), (357, 29924),

Gene: Nilo_71 Start: 51718, Stop: 52887, Start Num: 67

Candidate Starts for Nilo_71:

(Start: 67 @51718 has 78 MA's), (Start: 73 @51733 has 1 MA's), (81, 51775), (88, 51808), (147, 52009), (151, 52024), (190, 52156), (205, 52219), (206, 52234), (236, 52324), (242, 52351), (303, 52552), (305, 52558), (307, 52564), (331, 52675), (333, 52681), (357, 52813), (367, 52873),

Gene: NorManre_69 Start: 44890, Stop: 46107, Start Num: 67

Candidate Starts for NorManre_69:

(Start: 67 @44890 has 78 MA's), (Start: 73 @44905 has 1 MA's), (102, 45034), (129, 45124), (130, 45127), (142, 45163), (151, 45196), (190, 45310), (198, 45337), (205, 45376), (206, 45391), (219, 45421), (227, 45451), (236, 45481), (248, 45529), (321, 45820), (330, 45874), (333, 45883), (336, 45892), (341, 45916), (356, 46009), (373, 46099),

Gene: NosilaM_69 Start: 53310, Stop: 52105, Start Num: 66

Candidate Starts for NosilaM_69:

(Start: 66 @53310 has 10 MA's), (127, 53091), (134, 53067), (144, 53028), (145, 53025), (151, 52998), (232, 52710), (248, 52644), (269, 52533), (285, 52485), (312, 52404), (321, 52362), (330, 52308), (333, 52299), (336, 52290), (354, 52182),

Gene: Nova_56 Start: 43563, Stop: 44741, Start Num: 64

Candidate Starts for Nova_56:

(6, 43281), (10, 43311), (Start: 30 @43497 has 14 MA's), (Start: 64 @43563 has 45 MA's), (Start: 79 @43611 has 3 MA's), (85, 43650), (88, 43662), (115, 43761), (138, 43824), (151, 43878), (163, 43926), (188, 43992), (221, 44106), (227, 44133), (236, 44163), (247, 44208), (318, 44442), (330, 44508), (333, 44517), (336, 44526), (359, 44652), (373, 44733),

Gene: NovaSharks_67 Start: 42658, Stop: 43875, Start Num: 67

Candidate Starts for NovaSharks_67:

(Start: 67 @42658 has 78 MA's), (Start: 73 @42673 has 1 MA's), (102, 42802), (129, 42892), (130, 42895), (142, 42931), (151, 42964), (190, 43078), (198, 43105), (205, 43144), (206, 43159), (219, 43189), (227, 43219), (236, 43249), (248, 43297), (291, 43486), (330, 43642), (333, 43651), (336, 43660), (341, 43684), (350, 43738), (356, 43777), (373, 43867),

Gene: NovumRegina_66 Start: 52690, Stop: 51491, Start Num: 64

Candidate Starts for NovumRegina_66:

(Start: 64 @52690 has 45 MA's), (144, 52402), (145, 52399), (150, 52378), (151, 52372), (227, 52099), (232, 52087), (236, 52069), (244, 52036), (248, 52021), (266, 51934), (291, 51847), (296, 51832), (306, 51802), (307, 51799), (321, 51745), (331, 51688), (332, 51685), (333, 51682), (336, 51673), (354, 51565), (360, 51541),

Gene: Nubia_42 Start: 28083, Stop: 29030, Start Num: 60

Candidate Starts for Nubia_42:

(Start: 60 @28083 has 65 MA's), (103, 28230), (115, 28272), (138, 28347), (159, 28428), (162, 28443), (166, 28455), (212, 28605), (240, 28674), (241, 28677), (320, 28911), (328, 28956), (329, 28959), (336, 28986), (337, 28989),

Gene: OMalley_39 Start: 27504, Stop: 28451, Start Num: 67

Candidate Starts for OMalley_39:

(Start: 67 @27504 has 78 MA's), (82, 27570), (108, 27669), (115, 27693), (136, 27759), (149, 27807), (154, 27831), (162, 27861), (167, 27879), (169, 27891), (192, 27933), (234, 28071), (240, 28092), (241, 28095), (314, 28302), (328, 28377), (329, 28380), (336, 28407), (337, 28410),

Gene: Oaker_67 Start: 50680, Stop: 52002, Start Num: 46

Candidate Starts for Oaker_67:

(29, 50641), (Start: 39 @50665 has 2 MA's), (Start: 46 @50680 has 7 MA's), (86, 50794), (88, 50803), (91, 50812), (101, 50854), (150, 51028), (151, 51034), (163, 51085), (192, 51232), (197, 51250), (198, 51253), (200, 51268), (205, 51289), (241, 51421), (243, 51427), (300, 51610), (307, 51628), (321, 51682), (332, 51742), (341, 51778), (357, 51874),

Gene: Onyinye_74 Start: 50783, Stop: 52000, Start Num: 63

Candidate Starts for Onyinye_74:

(Start: 63 @50783 has 3 MA's), (Start: 75 @50810 has 2 MA's), (84, 50864), (97, 50909), (114, 50975), (117, 50987), (137, 51047), (144, 51077), (145, 51080), (151, 51107), (158, 51134), (190, 51263), (217, 51383), (219, 51389), (243, 51479), (252, 51521), (258, 51539), (261, 51557), (289, 51620), (318, 51704), (333, 51779), (335, 51785), (336, 51788), (347, 51857), (350, 51866), (358, 51911), (366, 51968),

Gene: OtterstedtS21_65 Start: 43824, Stop: 45041, Start Num: 67

Candidate Starts for OtterstedtS21_65:

(Start: 67 @43824 has 78 MA's), (Start: 73 @43839 has 1 MA's), (102, 43968), (129, 44058), (130, 44061), (142, 44097), (151, 44130), (190, 44244), (198, 44271), (205, 44310), (206, 44325), (219, 44355), (227, 44385), (236, 44415), (248, 44463), (321, 44754), (330, 44808), (333, 44817), (336, 44826), (341, 44850), (356, 44943), (373, 45033),

Gene: OurGirlNessie_38 Start: 26071, Stop: 27021, Start Num: 60

Candidate Starts for OurGirlNessie_38:

(Start: 60 @26071 has 65 MA's), (99, 26203), (102, 26215), (103, 26218), (110, 26242), (139, 26338), (151, 26386), (154, 26401), (166, 26443), (171, 26467), (196, 26515), (234, 26641), (240, 26665), (241, 26668), (244, 26677), (293, 26812), (314, 26872), (328, 26947), (336, 26977), (337, 26980),

Gene: Outis_67 Start: 53139, Stop: 51931, Start Num: 66

Candidate Starts for Outis_67:

(Start: 66 @53139 has 10 MA's), (Start: 73 @53121 has 1 MA's), (127, 52917), (134, 52893), (144, 52854), (145, 52851), (151, 52824), (169, 52749), (198, 52662), (232, 52536), (248, 52470), (269, 52359), (285, 52311), (307, 52242), (321, 52188), (330, 52134), (333, 52125), (336, 52116), (354, 52008), (356, 51996),

Gene: OverHedge_44 Start: 28810, Stop: 29964, Start Num: 67

Candidate Starts for OverHedge_44:

(2, 28411), (Start: 67 @28810 has 78 MA's), (Start: 75 @28831 has 2 MA's), (130, 29041), (151, 29104), (175, 29200), (205, 29305), (247, 29455), (266, 29545), (280, 29581), (291, 29611), (321, 29716), (331, 29773), (347, 29857), (357, 29914),

Gene: Oxynfrius_42 Start: 28104, Stop: 29051, Start Num: 60

Candidate Starts for Oxynfrius_42:

(Start: 60 @28104 has 65 MA's), (103, 28251), (115, 28293), (138, 28368), (159, 28449), (162, 28464), (166, 28476), (212, 28626), (240, 28695), (241, 28698), (320, 28932), (328, 28977), (329, 28980), (336, 29007), (337, 29010),

Gene: P1201_73 Start: 54596, Stop: 53460, Start Num: 66

Candidate Starts for P1201_73:

(Start: 66 @54596 has 10 MA's), (138, 54338), (151, 54287), (152, 54284), (180, 54173), (248, 53918), (307, 53753), (333, 53636), (355, 53519),

Gene: PBI1_54 Start: 43038, Stop: 44216, Start Num: 64

Candidate Starts for PBI1_54:

(6, 42756), (10, 42786), (17, 42849), (Start: 64 @43038 has 45 MA's), (Start: 79 @43086 has 3 MA's), (85, 43125), (88, 43137), (115, 43236), (138, 43299), (151, 43353), (163, 43401), (188, 43467), (221, 43581), (227, 43608), (236, 43638), (247, 43683), (318, 43917), (330, 43983), (333, 43992), (336, 44001), (359, 44127), (373, 44208),

Gene: PHTown_66 Start: 47159, Stop: 46161, Start Num: 68

Candidate Starts for PHTown_66:

(Start: 42 @47210 has 2 MA's), (Start: 68 @47159 has 7 MA's), (74, 47147), (151, 46868), (152, 46865), (189, 46736), (198, 46709), (205, 46673), (227, 46598), (232, 46586), (247, 46523), (326, 46382), (333, 46349), (336, 46340), (347, 46268), (349, 46262), (362, 46178),

Gene: PLOT_57 Start: 43090, Stop: 44268, Start Num: 64

Candidate Starts for PLOT_57:

(6, 42808), (17, 42901), (Start: 64 @43090 has 45 MA's), (Start: 79 @43138 has 3 MA's), (85, 43177), (88, 43189), (115, 43288), (138, 43351), (151, 43405), (163, 43453), (188, 43519), (221, 43633), (227, 43660), (236, 43690), (247, 43735), (318, 43969), (330, 44035), (333, 44044), (336, 44053), (359, 44179), (373, 44260),

Gene: Papyrus_69 Start: 51328, Stop: 52497, Start Num: 67

Candidate Starts for Papyrus_69:

(Start: 67 @51328 has 78 MA's), (Start: 73 @51343 has 1 MA's), (81, 51385), (88, 51418), (147, 51619), (151, 51634), (190, 51766), (205, 51829), (206, 51844), (236, 51934), (242, 51961), (303, 52162), (305, 52168), (307, 52174), (331, 52285), (333, 52291), (357, 52423), (367, 52483),

Gene: PartyCup_44 Start: 27759, Stop: 28706, Start Num: 60

Candidate Starts for PartyCup_44:

(Start: 60 @27759 has 65 MA's), (102, 27903), (103, 27906), (107, 27921), (115, 27948), (135, 28011), (139, 28026), (151, 28074), (162, 28119), (166, 28131), (171, 28155), (212, 28281), (240, 28350), (241, 28353), (293, 28497), (314, 28557), (328, 28632), (329, 28635), (336, 28662), (337, 28665),

Gene: ParvusTarda_64 Start: 43199, Stop: 44413, Start Num: 67

Candidate Starts for ParvusTarda_64:

(Start: 67 @43199 has 78 MA's), (Start: 73 @43214 has 1 MA's), (102, 43343), (Start: 128 @43427 has 1 MA's), (145, 43478), (151, 43505), (190, 43619), (198, 43646), (206, 43697), (212, 43712), (219, 43727), (227, 43757), (248, 43835), (291, 44024), (322, 44132), (330, 44180), (333, 44189), (336, 44198), (341, 44222), (356, 44315), (373, 44405),

Gene: Patbob_104 Start: 83577, Stop: 84548, Start Num: 49

Candidate Starts for Patbob_104:

(Start: 49 @83577 has 2 MA's), (Start: 64 @83601 has 45 MA's), (72, 83622), (95, 83721), (98, 83736), (103, 83760), (113, 83793), (151, 83910), (154, 83925), (190, 84021), (193, 84030), (222, 84135), (225, 84150), (228, 84159), (249, 84234), (260, 84276), (297, 84327), (303, 84348), (327, 84447), (328, 84456), (336, 84486),

Gene: Patience_81 Start: 53552, Stop: 54784, Start Num: 57

Candidate Starts for Patience_81:

(Start: 57 @53552 has 3 MA's), (80, 53606), (87, 53645), (88, 53648), (91, 53657), (99, 53690), (105, 53714), (148, 53879), (151, 53891), (171, 53972), (193, 54056), (199, 54077), (205, 54119), (243, 54257), (255, 54308), (265, 54359), (290, 54395), (307, 54443), (321, 54497), (333, 54560), (361, 54728), (370, 54770),

Gene: Patio_68 Start: 53007, Stop: 51817, Start Num: 61

Candidate Starts for Patio_68:

(Start: 56 @53016 has 2 MA's), (Start: 61 @53007 has 4 MA's), (115, 52809), (143, 52716), (144, 52713), (145, 52710), (151, 52683), (155, 52665), (169, 52608), (232, 52413), (233, 52410), (236, 52395), (248, 52347), (272, 52233), (278, 52221), (291, 52173), (307, 52125), (321, 52071), (333, 52008), (336, 51999), (356, 51879),

Gene: Patos_69 Start: 44889, Stop: 46106, Start Num: 67

Candidate Starts for Patos_69:

(Start: 67 @44889 has 78 MA's), (Start: 73 @44904 has 1 MA's), (102, 45033), (129, 45123), (130, 45126), (142, 45162), (151, 45195), (190, 45309), (198, 45336), (205, 45375), (206, 45390), (219, 45420), (227, 45450), (236, 45480), (248, 45528), (321, 45819), (330, 45873), (333, 45882), (336, 45891), (341, 45915), (356, 46008), (373, 46098),

Gene: PauloDiaboli_113 Start: 76695, Stop: 75760, Start Num: 62

Candidate Starts for PauloDiaboli_113:

(Start: 62 @76695 has 6 MA's), (65, 76686), (92, 76578), (119, 76488), (141, 76437), (148, 76410), (151, 76398), (169, 76314), (171, 76308), (197, 76269), (228, 76152), (244, 76101), (302, 75969), (303, 75966), (305, 75960), (316, 75921), (329, 75855), (336, 75828),

Gene: Penelope2018_57 Start: 43108, Stop: 44286, Start Num: 64

Candidate Starts for Penelope2018_57:

(6, 42826), (17, 42919), (Start: 64 @43108 has 45 MA's), (Start: 79 @43156 has 3 MA's), (85, 43195), (88, 43207), (115, 43306), (138, 43369), (151, 43423), (163, 43471), (188, 43537), (221, 43651), (227, 43678), (236, 43708), (247, 43753), (318, 43987), (330, 44053), (333, 44062), (336, 44071), (359, 44197), (373, 44278),

Gene: Penjamin420_66 Start: 44008, Stop: 45210, Start Num: 73

Candidate Starts for Penjamin420_66:

(Start: 67 @43993 has 78 MA's), (Start: 73 @44008 has 1 MA's), (102, 44137), (129, 44227), (130, 44230), (142, 44266), (151, 44299), (190, 44413), (198, 44440), (205, 44479), (206, 44494), (219, 44524), (227, 44554), (236, 44584), (248, 44632), (321, 44923), (330, 44977), (333, 44986), (336, 44995), (341, 45019), (356, 45112), (373, 45202),

Gene: PermaG_43 Start: 27639, Stop: 28652, Start Num: 30

Candidate Starts for PermaG_43:

(Start: 30 @27639 has 14 MA's), (82, 27768), (103, 27849), (151, 28002), (166, 28059), (198, 28137), (212, 28206), (214, 28209), (243, 28284), (250, 28311), (282, 28401), (286, 28416), (302, 28467), (328, 28578),

Gene: PeteyPab_68 Start: 50318, Stop: 49200, Start Num: 70

Candidate Starts for PeteyPab_68:

(Start: 70 @50318 has 10 MA's), (101, 50183), (118, 50132), (138, 50069), (151, 50018), (161, 49976), (169, 49943), (175, 49922), (193, 49880), (196, 49871), (198, 49862), (205, 49826), (219, 49772), (263, 49589), (328, 49400), (333, 49379), (340, 49349), (352, 49277), (355, 49262), (356, 49253),

Gene: Pharpay_43 Start: 28865, Stop: 30019, Start Num: 67

Candidate Starts for Pharpay_43:

(2, 28466), (Start: 67 @28865 has 78 MA's), (Start: 75 @28886 has 2 MA's), (87, 28955), (130, 29096), (151, 29159), (175, 29255), (205, 29360), (247, 29510), (266, 29600), (280, 29636), (291, 29666), (321, 29771), (331, 29828), (347, 29912), (357, 29969),

Gene: Phendrix_170 Start: 90108, Stop: 89107, Start Num: 49

Candidate Starts for Phendrix_170:

(Start: 49 @90108 has 2 MA's), (Start: 57 @90096 has 3 MA's), (Start: 75 @90054 has 2 MA's), (Start: 79 @90033 has 3 MA's), (108, 89904), (151, 89781), (152, 89778), (154, 89766), (205, 89607), (215, 89574), (218, 89565), (228, 89532), (230, 89526), (240, 89487), (245, 89469), (246, 89466), (262, 89406), (296, 89364), (303, 89340), (306, 89331), (315, 89298), (328, 89235), (329, 89232), (336, 89205), (340, 89187),

Gene: Phomeo_67 Start: 53314, Stop: 52115, Start Num: 64

Candidate Starts for Phomeo_67:

(Start: 64 @53314 has 45 MA's), (144, 53026), (145, 53023), (150, 53002), (151, 52996), (227, 52723), (232, 52711), (236, 52693), (244, 52660), (248, 52645), (266, 52558), (291, 52471), (296, 52456), (306, 52426), (307, 52423), (321, 52369), (331, 52312), (332, 52309), (333, 52306), (336, 52297), (354, 52189), (360, 52165),

Gene: Phreeze_66 Start: 49680, Stop: 50969, Start Num: 46

Candidate Starts for Phreeze_66:

(29, 49641), (Start: 39 @49665 has 2 MA's), (Start: 46 @49680 has 7 MA's), (86, 49794), (88, 49803), (91, 49812), (101, 49854), (150, 50028), (151, 50034), (163, 50085), (192, 50199), (197, 50217), (198, 50220), (200, 50235), (205, 50256), (241, 50388), (243, 50394), (284, 50532), (300, 50577), (307, 50595), (321, 50649), (332, 50709), (341, 50745), (357, 50841),

Gene: PhunaPhoke_43 Start: 28838, Stop: 29992, Start Num: 67

Candidate Starts for PhunaPhoke_43:

(2, 28439), (Start: 67 @28838 has 78 MA's), (Start: 75 @28859 has 2 MA's), (130, 29069), (151, 29132), (175, 29228), (205, 29333), (247, 29483), (266, 29573), (280, 29609), (291, 29639), (321, 29744), (331, 29801), (347, 29885), (357, 29942),

Gene: PinkFriday_39 Start: 26620, Stop: 27570, Start Num: 67

Candidate Starts for PinkFriday_39:

(Start: 67 @26620 has 78 MA's), (81, 26677), (103, 26767), (108, 26785), (136, 26875), (149, 26926), (159, 26965), (162, 26980), (167, 26998), (169, 27010), (194, 27058), (223, 27175), (240, 27214), (244, 27226), (275, 27313), (293, 27361), (314, 27421), (328, 27496), (336, 27526), (337, 27529),

Gene: PitaDog_39 Start: 26328, Stop: 27278, Start Num: 60

Candidate Starts for PitaDog_39:

(Start: 60 @26328 has 65 MA's), (99, 26460), (102, 26472), (103, 26475), (110, 26499), (139, 26595), (151, 26643), (154, 26658), (166, 26700), (171, 26724), (194, 26766), (196, 26772), (234, 26898), (240, 26922), (241, 26925), (244, 26934), (293, 27069), (314, 27129), (328, 27204), (336, 27234), (337, 27237),

Gene: Pleakley_75 Start: 52499, Stop: 51309, Start Num: 61

Candidate Starts for Pleakley_75:

(3, 52829), (12, 52727), (Start: 61 @52499 has 4 MA's), (Start: 73 @52472 has 1 MA's), (95, 52379), (130, 52256), (134, 52244), (145, 52202), (151, 52175), (152, 52172), (248, 51842), (266, 51755), (291, 51662), (307, 51614), (333, 51497), (340, 51467), (349, 51410), (354, 51380), (360, 51356),

Gene: Polyzuki_67 Start: 50081, Stop: 48915, Start Num: 64

Candidate Starts for Polyzuki_67:

(18, 50219), (35, 50111), (Start: 64 @50081 has 45 MA's), (118, 49883), (151, 49760), (169, 49685), (198, 49622), (202, 49595), (231, 49502), (235, 49487), (239, 49463), (247, 49436), (248, 49433), (307, 49223), (319, 49175), (333, 49106), (335, 49100), (357, 48974),

Gene: PotatoChip_69 Start: 50320, Stop: 49202, Start Num: 70

Candidate Starts for PotatoChip_69:

(Start: 70 @50320 has 10 MA's), (101, 50185), (118, 50134), (138, 50071), (151, 50020), (161, 49978), (169, 49945), (175, 49924), (193, 49882), (196, 49873), (198, 49864), (205, 49828), (219, 49774), (263, 49591), (328, 49402), (333, 49381), (340, 49351), (352, 49279), (355, 49264), (356, 49255),

Gene: Potatoes_41 Start: 27534, Stop: 28481, Start Num: 60

Candidate Starts for Potatoes_41:

(Start: 60 @27534 has 65 MA's), (83, 27603), (99, 27666), (102, 27678), (103, 27681), (110, 27705), (139, 27801), (151, 27849), (159, 27879), (166, 27906), (196, 27978), (241, 28128), (244, 28137), (275, 28224), (293, 28272), (314, 28332), (328, 28407), (329, 28410), (336, 28437), (337, 28440),

Gene: Potty_43 Start: 28843, Stop: 29997, Start Num: 67

Candidate Starts for Potty_43:

(2, 28444), (Start: 67 @28843 has 78 MA's), (Start: 75 @28864 has 2 MA's), (130, 29074), (151, 29137), (175, 29233), (205, 29338), (247, 29488), (266, 29578), (280, 29614), (291, 29644), (321, 29749), (331, 29806), (347, 29890), (357, 29947),

Gene: Poultruss_43 Start: 29185, Stop: 30312, Start Num: 67

Candidate Starts for Poultruss_43:

(Start: 67 @29185 has 78 MA's), (Start: 75 @29206 has 2 MA's), (130, 29416), (151, 29479), (175, 29575), (205, 29680), (247, 29830), (303, 29998), (321, 30064), (331, 30121), (347, 30205), (357, 30262),

Gene: Prager_57 Start: 43175, Stop: 44305, Start Num: 79

Candidate Starts for Prager_57:

(6, 42845), (10, 42875), (17, 42938), (Start: 64 @43127 has 45 MA's), (Start: 79 @43175 has 3 MA's), (85, 43214), (88, 43226), (115, 43325), (138, 43388), (151, 43442), (163, 43490), (188, 43556), (221, 43670), (227, 43697), (236, 43727), (247, 43772), (318, 44006), (330, 44072), (333, 44081), (336, 44090), (359, 44216), (373, 44297),

Gene: Preamble_39 Start: 26398, Stop: 27345, Start Num: 60

Candidate Starts for Preamble_39:

(Start: 60 @26398 has 65 MA's), (99, 26530), (102, 26542), (103, 26545), (110, 26569), (139, 26665), (151, 26713), (154, 26728), (166, 26770), (169, 26788), (192, 26830), (196, 26842), (293, 27136), (314, 27196), (328, 27271), (329, 27274), (336, 27301), (337, 27304),

Gene: Predator_68 Start: 49458, Stop: 50774, Start Num: 39

Candidate Starts for Predator_68:

(20, 49386), (27, 49425), (29, 49434), (Start: 39 @49458 has 2 MA's), (Start: 46 @49473 has 7 MA's), (86, 49578), (87, 49584), (91, 49596), (115, 49686), (151, 49818), (154, 49833), (163, 49869), (177, 49932), (181, 49971), (185, 49980), (197, 50022), (202, 50052), (205, 50061), (216, 50106), (237, 50172), (243, 50199), (247, 50214), (259, 50274), (284, 50337), (300, 50382), (317, 50436), (321, 50454), (332, 50514), (341, 50550), (353, 50625), (357, 50646), (359, 50652), (363, 50691), (371, 50727), (374, 50739),

Gene: Pterodactyl_39 Start: 26308, Stop: 27258, Start Num: 60

Candidate Starts for Pterodactyl_39:

(Start: 60 @26308 has 65 MA's), (99, 26440), (102, 26452), (103, 26455), (110, 26479), (139, 26575), (151, 26623), (154, 26638), (166, 26680), (171, 26704), (196, 26752), (234, 26878), (240, 26902), (241, 26905), (244, 26914), (293, 27049), (314, 27109), (328, 27184), (336, 27214), (337, 27217),

Gene: Puissant_69 Start: 49917, Stop: 51227, Start Num: 48

Candidate Starts for Puissant_69:

(14, 49746), (27, 49866), (29, 49875), (Start: 39 @49899 has 2 MA's), (48, 49917), (86, 50019), (91, 50037), (150, 50253), (151, 50259), (160, 50289), (163, 50310), (192, 50457), (197, 50475), (198, 50478), (200, 50493), (202, 50505), (205, 50514), (241, 50646), (243, 50652), (259, 50727), (277, 50778), (300, 50835), (332, 50967), (341, 51003), (353, 51078),

Gene: Pumancara_39 Start: 26532, Stop: 27482, Start Num: 67

Candidate Starts for Pumancara_39:

(Start: 67 @26532 has 78 MA's), (81, 26589), (103, 26679), (108, 26697), (136, 26787), (149, 26838), (159, 26877), (162, 26892), (167, 26910), (169, 26922), (194, 26970), (223, 27087), (244, 27138), (275, 27225), (293, 27273), (314, 27333), (328, 27408), (336, 27438), (337, 27441),

Gene: Pumpernickel_110 Start: 78248, Stop: 77310, Start Num: 62

Candidate Starts for Pumpernickel_110:

(Start: 62 @78248 has 6 MA's), (94, 78125), (104, 78077), (123, 78032), (141, 77990), (144, 77981), (148, 77963), (151, 77951), (169, 77867), (183, 77858), (190, 77846), (197, 77822), (220, 77735), (222, 77729), (228, 77705), (300, 77531), (303, 77519), (316, 77474), (336, 77381),

Gene: RAP15_42 Start: 27707, Stop: 28654, Start Num: 60

Candidate Starts for RAP15_42:

(Start: 60 @27707 has 65 MA's), (99, 27839), (102, 27851), (103, 27854), (110, 27878), (139, 27974), (151, 28022), (159, 28052), (166, 28079), (196, 28151), (241, 28301), (244, 28310), (275, 28397), (293, 28445), (314, 28505), (328, 28580), (336, 28610), (337, 28613),

Gene: Racecar_104 Start: 83495, Stop: 84466, Start Num: 49

Candidate Starts for Racecar_104:

(Start: 49 @83495 has 2 MA's), (Start: 64 @83519 has 45 MA's), (72, 83540), (95, 83639), (98, 83654), (103, 83678), (113, 83711), (151, 83828), (154, 83843), (190, 83939), (193, 83948), (222, 84053), (225, 84068), (228, 84077), (249, 84152), (260, 84194), (297, 84245), (303, 84266), (328, 84374), (336, 84404),

Gene: Rachella_43 Start: 28867, Stop: 30000, Start Num: 75

Candidate Starts for Rachella_43:

(2, 28447), (Start: 67 @28846 has 78 MA's), (Start: 75 @28867 has 2 MA's), (87, 28936), (130, 29077), (151, 29140), (175, 29236), (205, 29341), (247, 29491), (266, 29581), (280, 29617), (291, 29647), (321, 29752), (331, 29809), (347, 29893), (357, 29950),

Gene: Ranch_65 Start: 42668, Stop: 43885, Start Num: 67

Candidate Starts for Ranch_65:

(Start: 67 @42668 has 78 MA's), (Start: 73 @42683 has 1 MA's), (102, 42812), (129, 42902), (130, 42905), (142, 42941), (151, 42974), (190, 43088), (198, 43115), (205, 43154), (206, 43169), (219, 43199), (227, 43229), (236, 43259), (246, 43301), (321, 43598), (330, 43652), (333, 43661), (336, 43670), (341, 43694), (356, 43787), (373, 43877),

Gene: Rasovi_43 Start: 27973, Stop: 28986, Start Num: 30

Candidate Starts for Rasovi_43:

(Start: 30 @27973 has 14 MA's), (103, 28183), (125, 28252), (151, 28336), (167, 28399), (198, 28471), (199, 28474), (212, 28540), (214, 28543), (250, 28645), (251, 28651), (282, 28735), (286, 28750), (302, 28801), (316, 28849), (328, 28912),

Gene: RcigaStruga_41 Start: 27893, Stop: 28828, Start Num: 60

Candidate Starts for RcigaStruga_41:

(Start: 60 @27893 has 65 MA's), (103, 28040), (108, 28058), (115, 28082), (138, 28157), (151, 28208), (159, 28238), (162, 28253), (166, 28265), (212, 28415), (240, 28484), (241, 28487), (286, 28598), (328, 28754), (329, 28757), (336, 28784), (337, 28787),

Gene: Rie18_43 Start: 28391, Stop: 29497, Start Num: 67

Candidate Starts for Rie18_43:

(Start: 67 @28391 has 78 MA's), (Start: 75 @28412 has 2 MA's), (130, 28622), (151, 28685), (175, 28781), (205, 28886), (247, 29036), (321, 29249), (347, 29390), (357, 29447),

Gene: RikSengupta_46 Start: 29769, Stop: 30920, Start Num: 36

Candidate Starts for RikSengupta_46:

(Start: 36 @29769 has 1 MA's), (Start: 69 @29823 has 2 MA's), (Start: 73 @29826 has 1 MA's), (Start: 75 @29832 has 2 MA's), (130, 30042), (132, 30048), (148, 30093), (151, 30105), (167, 30168), (175, 30201), (205, 30306), (250, 30468), (303, 30603), (312, 30627), (350, 30819), (357, 30867),

Gene: Riovina_39 Start: 27504, Stop: 28451, Start Num: 67

Candidate Starts for Riovina_39:

(Start: 67 @27504 has 78 MA's), (82, 27570), (108, 27669), (115, 27693), (136, 27759), (149, 27807), (154, 27831), (162, 27861), (167, 27879), (169, 27891), (192, 27933), (234, 28071), (240, 28092), (241, 28095), (314, 28302), (328, 28377), (329, 28380), (336, 28407), (337, 28410),

Gene: Riparian_71 Start: 51165, Stop: 52334, Start Num: 67

Candidate Starts for Riparian_71:

(Start: 67 @51165 has 78 MA's), (Start: 73 @51180 has 1 MA's), (81, 51222), (88, 51255), (147, 51456), (151, 51471), (190, 51603), (205, 51666), (206, 51681), (236, 51771), (242, 51798), (303, 51999), (305, 52005), (307, 52011), (331, 52122), (333, 52128), (357, 52260), (367, 52320),

Gene: Riverdale_42 Start: 27672, Stop: 28619, Start Num: 60

Candidate Starts for Riverdale_42:

(Start: 60 @27672 has 65 MA's), (83, 27741), (99, 27804), (102, 27816), (103, 27819), (110, 27843), (139, 27939), (151, 27987), (159, 28017), (166, 28044), (196, 28116), (241, 28266), (244, 28275), (275, 28362), (293, 28410), (314, 28470), (328, 28545), (329, 28548), (336, 28575), (337, 28578),

Gene: Rooney_66 Start: 47314, Stop: 46316, Start Num: 68

Candidate Starts for Rooney_66:

(Start: 68 @47314 has 7 MA's), (74, 47302), (151, 47023), (152, 47020), (189, 46891), (198, 46864), (205, 46828), (227, 46753), (232, 46741), (247, 46678), (318, 46579), (326, 46537), (333, 46504), (336, 46495), (347, 46423), (349, 46417), (362, 46333),

Gene: Rope_69 Start: 51321, Stop: 52490, Start Num: 67

Candidate Starts for Rope_69:

(Start: 67 @51321 has 78 MA's), (Start: 73 @51336 has 1 MA's), (81, 51378), (88, 51411), (147, 51612), (151, 51627), (190, 51759), (205, 51822), (206, 51837), (236, 51927), (242, 51954), (303, 52155), (305, 52161), (307, 52167), (331, 52278), (333, 52284), (357, 52416), (367, 52476),

Gene: Rozby_41 Start: 27464, Stop: 28411, Start Num: 60

Candidate Starts for Rozby_41:

(Start: 60 @27464 has 65 MA's), (83, 27533), (99, 27596), (102, 27608), (103, 27611), (110, 27635), (139, 27731), (151, 27779), (159, 27809), (166, 27836), (196, 27908), (241, 28058), (244, 28067), (275, 28154), (293, 28202), (314, 28262), (328, 28337), (329, 28340), (336, 28367), (337, 28370),

Gene: Rumi_66 Start: 42355, Stop: 43572, Start Num: 67

Candidate Starts for Rumi_66:

(Start: 67 @42355 has 78 MA's), (Start: 73 @42370 has 1 MA's), (102, 42499), (129, 42589), (130, 42592), (142, 42628), (151, 42661), (190, 42775), (198, 42802), (205, 42841), (206, 42856), (219, 42886), (227, 42916), (236, 42946), (248, 42994), (291, 43183), (330, 43339), (333, 43348), (336, 43357), (341, 43381), (350, 43435), (356, 43474), (373, 43564),

Gene: SBlackberry_42 Start: 27445, Stop: 28458, Start Num: 30

Candidate Starts for SBlackberry_42:

(21, 27400), (Start: 30 @27445 has 14 MA's), (103, 27655), (125, 27724), (151, 27808), (166, 27865), (198, 27943), (212, 28012), (214, 28015), (243, 28090), (250, 28117), (286, 28222), (302, 28273), (316, 28321), (328, 28384),

Gene: SJReid_110 Start: 75794, Stop: 76723, Start Num: 72

Candidate Starts for SJReid_110:

(Start: 49 @75749 has 2 MA's), (Start: 64 @75773 has 45 MA's), (72, 75794), (87, 75869), (95, 75893), (96, 75902), (113, 75965), (151, 76082), (157, 76106), (163, 76139), (190, 76193), (193, 76202), (222, 76307), (225, 76322), (230, 76337), (297, 76499), (303, 76520), (328, 76628), (336, 76658),

Gene: Sadboi_66 Start: 44538, Stop: 45701, Start Num: 67

Candidate Starts for Sadboi_66:

(Start: 67 @44538 has 78 MA's), (Start: 73 @44553 has 1 MA's), (102, 44682), (129, 44772), (130, 44775), (142, 44811), (151, 44844), (190, 44958), (198, 44985), (205, 45024), (206, 45039), (219, 45069), (227, 45099), (236, 45129), (248, 45177), (263, 45252), (279, 45273), (291, 45312), (321, 45414), (330, 45468), (333, 45477), (336, 45486), (341, 45510), (356, 45603), (373, 45693),

Gene: Sampudon_65 Start: 44890, Stop: 46053, Start Num: 67

Candidate Starts for Sampudon_65:

(Start: 67 @44890 has 78 MA's), (Start: 73 @44905 has 1 MA's), (102, 45034), (129, 45124), (130, 45127), (142, 45163), (151, 45196), (190, 45310), (198, 45337), (205, 45376), (206, 45391), (219, 45421), (227, 45451), (236, 45481), (248, 45529), (291, 45664), (321, 45766), (330, 45820), (333, 45829), (336, 45838), (341, 45862), (356, 45955), (373, 46045),

Gene: Sapo_31 Start: 30227, Stop: 29166, Start Num: 24

Candidate Starts for Sapo_31:

(Start: 24 @30227 has 1 MA's), (94, 30014), (127, 29909), (159, 29801), (171, 29750), (174, 29744), (198, 29696), (204, 29663), (244, 29546), (253, 29507), (331, 29315), (345, 29234), (346, 29231), (349, 29222), (353, 29192),

Gene: Savage2526_42 Start: 27701, Stop: 28648, Start Num: 60

Candidate Starts for Savage2526_42:

(Start: 60 @27701 has 65 MA's), (99, 27833), (102, 27845), (103, 27848), (110, 27872), (139, 27968), (151, 28016), (159, 28046), (166, 28073), (196, 28145), (241, 28295), (244, 28304), (275, 28391), (293, 28439), (314, 28499), (328, 28574), (329, 28577), (336, 28604), (337, 28607),

Gene: Scuttle_41 Start: 27661, Stop: 28608, Start Num: 60

Candidate Starts for Scuttle_41:

(Start: 60 @27661 has 65 MA's), (99, 27793), (103, 27808), (110, 27832), (139, 27928), (151, 27976), (159, 28006), (166, 28033), (196, 28105), (241, 28255), (244, 28264), (275, 28351), (293, 28399), (314, 28459), (328, 28534), (329, 28537), (336, 28564), (337, 28567),

Gene: Send513_69 Start: 51699, Stop: 52868, Start Num: 67

Candidate Starts for Send513_69:

(Start: 67 @51699 has 78 MA's), (Start: 73 @51714 has 1 MA's), (81, 51756), (88, 51789), (147, 51990), (151, 52005), (190, 52137), (205, 52200), (206, 52215), (242, 52332), (303, 52533), (305, 52539), (307, 52545), (331, 52656), (333, 52662), (357, 52794), (367, 52854),

Gene: Sergei_39 Start: 27511, Stop: 28464, Start Num: 67

Candidate Starts for Sergei_39:

(Start: 67 @27511 has 78 MA's), (81, 27568), (103, 27658), (108, 27676), (136, 27766), (149, 27817), (159, 27856), (162, 27871), (167, 27889), (169, 27901), (194, 27949), (223, 28066), (240, 28105), (244, 28117), (314, 28315), (328, 28390), (336, 28420), (337, 28423),

Gene: ShakeNBake_66 Start: 47186, Stop: 46188, Start Num: 68

Candidate Starts for ShakeNBake_66:

(Start: 42 @47237 has 2 MA's), (Start: 68 @47186 has 7 MA's), (74, 47174), (151, 46895), (152, 46892), (189, 46763), (198, 46736), (205, 46700), (227, 46625), (232, 46613), (247, 46550), (326, 46409), (333, 46376), (336, 46367), (347, 46295), (349, 46289), (362, 46205),

Gene: Sienna_54 Start: 40504, Stop: 41709, Start Num: 33

Candidate Starts for Sienna_54:

(Start: 33 @40504 has 4 MA's), (Start: 64 @40564 has 45 MA's), (Start: 70 @40573 has 10 MA's), (110, 40711), (124, 40735), (168, 40888), (178, 40921), (243, 41167), (244, 41170), (245, 41176), (249, 41191), (289, 41311), (307, 41359), (315, 41389), (317, 41395), (323, 41425), (329, 41458), (333, 41476), (335, 41482), (350, 41563), (355, 41593), (357, 41605), (368, 41668),

Gene: SirHarley_59 Start: 43598, Stop: 44728, Start Num: 79

Candidate Starts for SirHarley_59:

(34, 43505), (50, 43532), (52, 43535), (Start: 64 @43550 has 45 MA's), (Start: 79 @43598 has 3 MA's), (85, 43637), (88, 43649), (115, 43748), (138, 43811), (151, 43865), (163, 43913), (188, 43979), (221, 44093), (227, 44120), (236, 44150), (247, 44195), (318, 44429), (330, 44495), (333, 44504), (336, 44513), (359, 44639), (373, 44720),

Gene: Sixama_166 Start: 94053, Stop: 93025, Start Num: 31

Candidate Starts for Sixama_166:

(28, 94059), (Start: 31 @94053 has 1 MA's), (Start: 49 @94014 has 2 MA's), (Start: 57 @94002 has 3 MA's), (77, 93948), (119, 93786), (127, 93765), (151, 93690), (201, 93528), (203, 93522), (210, 93492), (228, 93441), (239, 93399), (240, 93396), (246, 93375), (296, 93273), (327, 93153), (328, 93144), (329, 93141), (336, 93114), (347, 93048), (351, 93036),

Gene: Skysand_68 Start: 53458, Stop: 52295, Start Num: 76

Candidate Starts for Skysand_68:

(Start: 76 @53458 has 2 MA's), (115, 53287), (143, 53194), (144, 53191), (145, 53188), (151, 53161), (155, 53143), (169, 53086), (232, 52891), (233, 52888), (236, 52873), (248, 52825), (272, 52711), (278, 52699), (291, 52651), (307, 52603), (321, 52549), (333, 52486), (336, 52477), (356, 52357),

Gene: Snakehole_43 Start: 28023, Stop: 29177, Start Num: 67

Candidate Starts for Snakehole_43:

(2, 27624), (Start: 67 @28023 has 78 MA's), (Start: 75 @28044 has 2 MA's), (130, 28254), (151, 28317), (175, 28413), (205, 28518), (247, 28668), (280, 28794), (291, 28824), (321, 28929), (331, 28986), (347, 29070), (357, 29127),

Gene: Sparcetus_46 Start: 29700, Stop: 30797, Start Num: 69

Candidate Starts for Sparcetus_46:

(38, 29652), (Start: 69 @29700 has 2 MA's), (Start: 73 @29703 has 1 MA's), (Start: 75 @29709 has 2 MA's), (130, 29919), (132, 29925), (148, 29970), (151, 29982), (167, 30045), (175, 30078), (205,

30183), (250, 30345), (303, 30480), (312, 30504), (350, 30696), (357, 30744),

Gene: Spocter_42 Start: 29643, Stop: 30608, Start Num: 44

Candidate Starts for Spocter_42:

(Start: 44 @29643 has 1 MA's), (77, 29706), (99, 29805), (109, 29841), (127, 29880), (150, 29943), (151, 29949), (194, 30072), (199, 30090), (202, 30114), (208, 30147), (240, 30225), (274, 30342), (288, 30381), (313, 30444),

Gene: StarStruck_67 Start: 53139, Stop: 51931, Start Num: 66

Candidate Starts for StarStruck_67:

(Start: 66 @53139 has 10 MA's), (Start: 73 @53121 has 1 MA's), (127, 52917), (134, 52893), (144, 52854), (145, 52851), (151, 52824), (169, 52749), (198, 52662), (232, 52536), (248, 52470), (269, 52359), (285, 52311), (307, 52242), (321, 52188), (330, 52134), (333, 52125), (336, 52116), (354, 52008), (356, 51996),

Gene: Stickynote_69 Start: 50521, Stop: 49409, Start Num: 70

Candidate Starts for Stickynote_69:

(Start: 70 @50521 has 10 MA's), (118, 50335), (151, 50221), (161, 50179), (169, 50146), (193, 50083), (196, 50074), (198, 50065), (205, 50029), (219, 49975), (263, 49792), (328, 49603), (333, 49582), (340, 49552), (352, 49480), (355, 49465), (356, 49456),

Gene: Stuff_50 Start: 36182, Stop: 37180, Start Num: 59

Candidate Starts for Stuff_50:

(7, 35945), (8, 35951), (16, 36023), (Start: 59 @36182 has 10 MA's), (103, 36347), (110, 36371), (140, 36479), (149, 36512), (154, 36536), (193, 36626), (195, 36632), (198, 36644), (199, 36647), (214, 36716), (244, 36806), (264, 36902), (306, 37013), (342, 37157),

Gene: Sucha_40 Start: 25225, Stop: 26232, Start Num: 30

Candidate Starts for Sucha_40:

(Start: 30 @25225 has 14 MA's), (103, 25435), (151, 25582), (167, 25645), (214, 25789), (219, 25801), (243, 25864), (250, 25891), (251, 25897), (282, 25981), (286, 25996), (311, 26071), (328, 26158),

Gene: Sukkupi_67 Start: 51527, Stop: 50328, Start Num: 67

Candidate Starts for Sukkupi_67:

(Start: 67 @51527 has 78 MA's), (127, 51308), (134, 51284), (143, 51248), (144, 51245), (145, 51242), (151, 51215), (155, 51197), (169, 51140), (227, 50942), (248, 50864), (266, 50777), (291, 50684), (296, 50669), (306, 50639), (307, 50636), (312, 50624), (321, 50582), (333, 50519), (336, 50510), (353, 50408), (354, 50402),

Gene: Supakev_39 Start: 27504, Stop: 28451, Start Num: 67

Candidate Starts for Supakev_39:

(Start: 67 @27504 has 78 MA's), (82, 27570), (108, 27669), (115, 27693), (136, 27759), (149, 27807), (154, 27831), (162, 27861), (167, 27879), (169, 27891), (192, 27933), (234, 28071), (240, 28092), (241, 28095), (314, 28302), (328, 28377), (329, 28380), (336, 28407), (337, 28410),

Gene: SuperSulley_68 Start: 53499, Stop: 52291, Start Num: 66

Candidate Starts for SuperSulley_68:

(Start: 66 @53499 has 10 MA's), (127, 53277), (134, 53253), (144, 53214), (145, 53211), (151, 53184), (155, 53166), (169, 53109), (232, 52896), (248, 52830), (269, 52719), (285, 52671), (312, 52590), (321, 52548), (330, 52494), (333, 52485), (336, 52476), (354, 52368),

Gene: Suppi_41 Start: 27580, Stop: 28527, Start Num: 60

Candidate Starts for Suppi_41:

(Start: 60 @27580 has 65 MA's), (102, 27724), (103, 27727), (107, 27742), (115, 27769), (135, 27832), (139, 27847), (151, 27895), (162, 27940), (166, 27952), (171, 27976), (212, 28102), (240, 28171), (241, 28174), (293, 28318), (314, 28378), (328, 28453), (329, 28456), (336, 28483), (337, 28486),

Gene: Suzy_54 Start: 41757, Stop: 42902, Start Num: 64

Candidate Starts for Suzy_54:

(Start: 64 @41757 has 45 MA's), (Start: 70 @41766 has 10 MA's), (110, 41904), (168, 42081), (178, 42114), (243, 42360), (244, 42363), (245, 42369), (249, 42384), (258, 42420), (287, 42495), (289, 42504), (307, 42552), (315, 42582), (317, 42588), (323, 42618), (329, 42651), (333, 42669), (335, 42675), (350, 42756), (355, 42786), (357, 42798), (368, 42861),

Gene: Talia1610_105 Start: 82860, Stop: 83831, Start Num: 49

Candidate Starts for Talia1610_105:

(Start: 49 @82860 has 2 MA's), (Start: 64 @82884 has 45 MA's), (72, 82905), (95, 83004), (98, 83019), (103, 83043), (113, 83076), (151, 83193), (154, 83208), (190, 83304), (193, 83313), (222, 83418), (225, 83433), (228, 83442), (249, 83517), (260, 83559), (297, 83610), (303, 83631), (328, 83739), (336, 83769),

Gene: TattModd_40 Start: 27321, Stop: 28268, Start Num: 60

Candidate Starts for TattModd_40:

(Start: 60 @27321 has 65 MA's), (83, 27390), (99, 27453), (102, 27465), (103, 27468), (110, 27492), (139, 27588), (151, 27636), (159, 27666), (166, 27693), (167, 27699), (196, 27765), (241, 27915), (244, 27924), (275, 28011), (293, 28059), (314, 28119), (328, 28194), (329, 28197), (336, 28224), (337, 28227),

Gene: Tedro_43 Start: 28325, Stop: 29431, Start Num: 67

Candidate Starts for Tedro_43:

(2, 27932), (5, 28013), (Start: 67 @28325 has 78 MA's), (Start: 75 @28346 has 2 MA's), (130, 28556), (151, 28619), (175, 28715), (205, 28820), (247, 28970), (321, 29183), (331, 29240), (347, 29324), (357, 29381),

Gene: Temper16_39 Start: 27511, Stop: 28464, Start Num: 67

Candidate Starts for Temper16_39:

(Start: 67 @27511 has 78 MA's), (81, 27568), (103, 27658), (108, 27676), (136, 27766), (149, 27817), (159, 27856), (162, 27871), (167, 27889), (169, 27901), (194, 27949), (223, 28066), (240, 28105), (244, 28117), (314, 28315), (328, 28390), (336, 28420), (337, 28423),

Gene: Terapin_55 Start: 40488, Stop: 41633, Start Num: 64

Candidate Starts for Terapin_55:

(Start: 33 @40428 has 4 MA's), (Start: 64 @40488 has 45 MA's), (Start: 70 @40497 has 10 MA's), (110, 40635), (124, 40659), (168, 40812), (178, 40845), (243, 41091), (244, 41094), (245, 41100), (249, 41115), (289, 41235), (307, 41283), (315, 41313), (317, 41319), (323, 41349), (329, 41382), (333, 41400), (335, 41406), (350, 41487), (355, 41517), (357, 41529), (368, 41592),

Gene: Theresita_43 Start: 26461, Stop: 27471, Start Num: 30

Candidate Starts for Theresita_43:

(Start: 30 @26461 has 14 MA's), (102, 26668), (103, 26671), (151, 26821), (204, 26989), (219, 27040), (240, 27094), (282, 27220), (296, 27265), (312, 27313), (321, 27355), (328, 27397), (336, 27427), (341, 27448),

Gene: Thoth_57 Start: 43106, Stop: 44284, Start Num: 64

Candidate Starts for Thoth_57:

(6, 42824), (10, 42854), (17, 42917), (Start: 64 @43106 has 45 MA's), (Start: 79 @43154 has 3 MA's), (85, 43193), (88, 43205), (115, 43304), (138, 43367), (151, 43421), (163, 43469), (188, 43535), (221, 43649), (227, 43676), (236, 43706), (247, 43751), (318, 43985), (330, 44051), (333, 44060), (336, 44069), (359, 44195), (373, 44276),

Gene: Thumb_68 Start: 50115, Stop: 51404, Start Num: 46

Candidate Starts for Thumb_68:

(29, 50076), (Start: 39 @50100 has 2 MA's), (Start: 46 @50115 has 7 MA's), (86, 50229), (88, 50238), (91, 50247), (101, 50289), (150, 50463), (151, 50469), (163, 50520), (192, 50634), (197, 50652), (198, 50655), (200, 50670), (205, 50691), (241, 50823), (243, 50829), (284, 50967), (300, 51012), (307, 51030), (321, 51084), (332, 51144), (341, 51180), (357, 51276),

Gene: Tillicus_61 Start: 43238, Stop: 44398, Start Num: 67

Candidate Starts for Tillicus_61:

(Start: 67 @43238 has 78 MA's), (Start: 73 @43253 has 1 MA's), (102, 43382), (Start: 128 @43466 has 1 MA's), (145, 43517), (151, 43544), (190, 43658), (198, 43685), (205, 43721), (206, 43736), (212, 43751), (219, 43766), (227, 43796), (248, 43874), (261, 43934), (268, 43961), (291, 44009), (292, 44015), (322, 44117), (330, 44165), (333, 44174), (341, 44207), (356, 44300), (373, 44390),

Gene: TinyMiny_46 Start: 29721, Stop: 30818, Start Num: 69

Candidate Starts for TinyMiny_46:

(Start: 36 @29667 has 1 MA's), (Start: 69 @29721 has 2 MA's), (Start: 73 @29724 has 1 MA's), (Start: 75 @29730 has 2 MA's), (130, 29940), (132, 29946), (148, 29991), (151, 30003), (167, 30066), (175, 30099), (205, 30204), (250, 30366), (303, 30501), (312, 30525), (350, 30717), (357, 30765),

Gene: Tracker_66 Start: 52125, Stop: 50926, Start Num: 64

Candidate Starts for Tracker_66:

(Start: 64 @52125 has 45 MA's), (144, 51837), (145, 51834), (150, 51813), (151, 51807), (227, 51534), (232, 51522), (236, 51504), (244, 51471), (248, 51456), (266, 51369), (291, 51282), (305, 51240), (306, 51237), (307, 51234), (321, 51180), (331, 51123), (332, 51120), (333, 51117), (336, 51108), (354, 51000), (360, 50976),

Gene: Troll4_57 Start: 43237, Stop: 44415, Start Num: 64

Candidate Starts for Troll4_57:

(6, 42955), (10, 42985), (17, 43048), (Start: 64 @43237 has 45 MA's), (Start: 79 @43285 has 3 MA's), (85, 43324), (88, 43336), (115, 43435), (138, 43498), (151, 43552), (163, 43600), (188, 43666), (221, 43780), (227, 43807), (236, 43837), (247, 43882), (318, 44116), (330, 44182), (333, 44191), (336, 44200), (359, 44326), (373, 44407),

Gene: TurboVicky_43 Start: 27685, Stop: 28698, Start Num: 30

Candidate Starts for TurboVicky_43:

(Start: 30 @27685 has 14 MA's), (82, 27814), (103, 27895), (125, 27964), (151, 28048), (172, 28132), (198, 28183), (212, 28252), (214, 28255), (250, 28357), (251, 28363), (282, 28447), (286, 28462), (302, 28513), (316, 28561), (328, 28624),

Gene: Turuncu_69 Start: 52823, Stop: 51867, Start Num: 128

Candidate Starts for Turuncu_69:

(Start: 128 @52823 has 1 MA's), (135, 52799), (144, 52763), (151, 52733), (163, 52685), (187, 52622), (248, 52403), (266, 52316), (269, 52292), (285, 52244), (307, 52175), (333, 52058), (336, 52049), (339, 52034), (360, 51917),

Gene: Typher_45 Start: 27803, Stop: 28816, Start Num: 30

Candidate Starts for Typher_45:

(Start: 30 @27803 has 14 MA's), (82, 27932), (103, 28013), (125, 28082), (151, 28166), (172, 28250), (198, 28301), (212, 28370), (214, 28373), (250, 28475), (251, 28481), (282, 28565), (286, 28580), (302, 28631), (316, 28679), (328, 28742),

Gene: UNTPL_52 Start: 36210, Stop: 37214, Start Num: 55

Candidate Starts for UNTPL_52:

(1, 35823), (7, 35979), (16, 36057), (Start: 55 @36210 has 1 MA's), (Start: 59 @36216 has 10 MA's), (103, 36381), (110, 36405), (140, 36513), (149, 36546), (154, 36570), (169, 36630), (193, 36660), (195, 36666), (198, 36678), (199, 36681), (202, 36705), (205, 36714), (214, 36750), (244, 36840), (264, 36936), (302, 37035), (303, 37038), (306, 37047), (342, 37191),

Gene: Urla_40 Start: 27482, Stop: 28432, Start Num: 60

Candidate Starts for Urla_40:

(Start: 60 @27482 has 65 MA's), (99, 27614), (102, 27626), (103, 27629), (107, 27644), (110, 27653), (139, 27749), (151, 27797), (154, 27812), (166, 27854), (171, 27878), (196, 27926), (198, 27935), (234, 28052), (241, 28079), (244, 28088), (314, 28283), (320, 28313), (328, 28358), (329, 28361), (336, 28388), (337, 28391),

Gene: Vallejo_42 Start: 27675, Stop: 28622, Start Num: 60

Candidate Starts for Vallejo_42:

(Start: 60 @27675 has 65 MA's), (83, 27744), (99, 27807), (102, 27819), (103, 27822), (110, 27846), (139, 27942), (151, 27990), (159, 28020), (166, 28047), (196, 28119), (241, 28269), (244, 28278), (275, 28365), (293, 28413), (314, 28473), (328, 28548), (329, 28551), (336, 28578), (337, 28581),

Gene: Visconti_58 Start: 43117, Stop: 44295, Start Num: 64

Candidate Starts for Visconti_58:

(6, 42835), (10, 42865), (17, 42928), (Start: 64 @43117 has 45 MA's), (Start: 79 @43165 has 3 MA's), (85, 43204), (88, 43216), (115, 43315), (138, 43378), (151, 43432), (163, 43480), (188, 43546), (221, 43660), (227, 43687), (236, 43717), (247, 43762), (318, 43996), (330, 44062), (333, 44071), (336, 44080), (359, 44206), (373, 44287),

Gene: Vulture_39 Start: 27432, Stop: 28382, Start Num: 67

Candidate Starts for Vulture_39:

(32, 27378), (Start: 67 @27432 has 78 MA's), (103, 27579), (108, 27597), (136, 27687), (149, 27738), (159, 27777), (162, 27792), (167, 27810), (169, 27822), (194, 27870), (223, 27987), (240, 28026), (244, 28038), (275, 28125), (293, 28173), (314, 28233), (328, 28308), (329, 28311), (336, 28338), (337, 28341),

Gene: WaldoWhy_59 Start: 43170, Stop: 44348, Start Num: 64

Candidate Starts for WaldoWhy_59:

(6, 42888), (10, 42918), (17, 42981), (Start: 64 @43170 has 45 MA's), (Start: 79 @43218 has 3 MA's), (85, 43257), (88, 43269), (115, 43368), (138, 43431), (151, 43485), (163, 43533), (188, 43599), (221, 43713), (227, 43740), (236, 43770), (247, 43815), (318, 44049), (330, 44115), (333, 44124), (336, 44133), (359, 44259), (373, 44340),

Gene: Wawa_41 Start: 27508, Stop: 28455, Start Num: 60

Candidate Starts for Wawa_41:

(Start: 60 @27508 has 65 MA's), (99, 27640), (102, 27652), (103, 27655), (110, 27679), (139, 27775), (151, 27823), (159, 27853), (166, 27880), (196, 27952), (241, 28102), (244, 28111), (275, 28198), (293, 28246), (314, 28306), (328, 28381), (329, 28384), (336, 28411), (337, 28414),

Gene: Wayne_41 Start: 27626, Stop: 28573, Start Num: 60

Candidate Starts for Wayne_41:

(Start: 60 @27626 has 65 MA's), (102, 27770), (103, 27773), (107, 27788), (115, 27815), (135, 27878), (139, 27893), (151, 27941), (162, 27986), (166, 27998), (171, 28022), (212, 28148), (240, 28217), (241, 28220), (293, 28364), (314, 28424), (328, 28499), (329, 28502), (336, 28529), (337, 28532),

Gene: Weiss13_69 Start: 51402, Stop: 52571, Start Num: 67

Candidate Starts for Weiss13_69:

(Start: 67 @51402 has 78 MA's), (Start: 73 @51417 has 1 MA's), (81, 51459), (88, 51492), (147, 51693), (151, 51708), (190, 51840), (205, 51903), (206, 51918), (236, 52008), (242, 52035), (303, 52236), (305, 52242), (307, 52248), (331, 52359), (333, 52365), (357, 52497), (367, 52557),

Gene: Wentworth_66 Start: 47288, Stop: 46290, Start Num: 68

Candidate Starts for Wentworth_66:

(Start: 42 @47339 has 2 MA's), (Start: 68 @47288 has 7 MA's), (74, 47276), (151, 46997), (152, 46994), (176, 46898), (198, 46838), (205, 46802), (227, 46727), (232, 46715), (244, 46664), (247, 46652), (326, 46511), (333, 46478), (336, 46469), (347, 46397), (349, 46391), (353, 46367),

Gene: Wheezy_66 Start: 52339, Stop: 51140, Start Num: 64

Candidate Starts for Wheezy_66:

(Start: 64 @52339 has 45 MA's), (144, 52051), (145, 52048), (150, 52027), (151, 52021), (227, 51748), (232, 51736), (236, 51718), (244, 51685), (248, 51670), (266, 51583), (291, 51496), (306, 51451), (307, 51448), (331, 51337), (332, 51334), (333, 51331), (336, 51322), (349, 51244), (354, 51214), (360, 51190),

Gene: WhoseManz_67 Start: 49542, Stop: 48343, Start Num: 67

Candidate Starts for WhoseManz_67:

(Start: 67 @49542 has 78 MA's), (127, 49323), (134, 49299), (144, 49260), (145, 49257), (151, 49230), (155, 49212), (169, 49155), (227, 48957), (248, 48879), (254, 48852), (265, 48795), (266, 48792), (291, 48699), (306, 48654), (307, 48651), (312, 48639), (321, 48597), (333, 48534), (336, 48525), (353, 48423), (354, 48417), (360, 48393),

Gene: Wilkos_68 Start: 47443, Stop: 46445, Start Num: 68

Candidate Starts for Wilkos_68:

(Start: 42 @47494 has 2 MA's), (Start: 68 @47443 has 7 MA's), (74, 47431), (151, 47152), (152, 47149), (189, 47020), (198, 46993), (205, 46957), (227, 46882), (232, 46870), (244, 46819), (247, 46807), (326, 46666), (333, 46633), (336, 46624), (347, 46552), (349, 46546), (353, 46522),

Gene: Wojtek_61 Start: 42920, Stop: 44134, Start Num: 67

Candidate Starts for Wojtek_61:

(Start: 67 @42920 has 78 MA's), (Start: 73 @42935 has 1 MA's), (102, 43064), (Start: 128 @43148 has 1 MA's), (145, 43199), (151, 43226), (190, 43340), (198, 43367), (206, 43418), (212, 43433), (219, 43448), (227, 43478), (248, 43556), (291, 43745), (322, 43853), (330, 43901), (333, 43910), (341, 43943), (356, 44036), (373, 44126),

Gene: Wollypog_46 Start: 33478, Stop: 34599, Start Num: 70

Candidate Starts for Wollypog_46:

(Start: 70 @33478 has 10 MA's), (122, 33679), (Start: 128 @33697 has 1 MA's), (146, 33751), (151, 33769), (169, 33844), (227, 34045), (231, 34054), (266, 34210), (287, 34234), (291, 34246), (292, 34252), (305, 34288), (347, 34498), (357, 34549),

Gene: WonderBoy_38 Start: 26303, Stop: 27253, Start Num: 60

Candidate Starts for WonderBoy_38:

(Start: 60 @26303 has 65 MA's), (99, 26435), (102, 26447), (103, 26450), (110, 26474), (139, 26570), (151, 26618), (154, 26633), (166, 26675), (171, 26699), (194, 26741), (196, 26747), (234, 26873), (240, 26897), (241, 26900), (244, 26909), (293, 27044), (314, 27104), (328, 27179), (336, 27209), (337, 27212),

Gene: Xenia2_59 Start: 42310, Stop: 43470, Start Num: 67

Candidate Starts for Xenia2_59:

(54, 42286), (Start: 67 @42310 has 78 MA's), (Start: 73 @42322 has 1 MA's), (102, 42451), (129, 42541), (130, 42544), (145, 42586), (151, 42613), (154, 42628), (171, 42694), (198, 42754), (206, 42808), (219, 42838), (227, 42868), (246, 42940), (266, 43033), (276, 43042), (292, 43087), (320, 43180), (330, 43237), (333, 43246), (336, 43255), (341, 43279), (356, 43372),

Gene: Yara_62 Start: 46145, Stop: 45150, Start Num: 70

Candidate Starts for Yara_62:

(Start: 70 @46145 has 10 MA's), (74, 46136), (151, 45857), (152, 45854), (198, 45698), (205, 45662), (211, 45635), (227, 45587), (232, 45575), (244, 45524), (247, 45512), (321, 45401), (326, 45371), (333, 45338), (336, 45329), (347, 45257), (353, 45227),

Gene: Yelo_68 Start: 51781, Stop: 52950, Start Num: 67

Candidate Starts for Yelo_68:

(Start: 67 @51781 has 78 MA's), (Start: 73 @51796 has 1 MA's), (81, 51838), (88, 51871), (147, 52072), (151, 52087), (176, 52186), (190, 52219), (205, 52282), (206, 52297), (236, 52387), (242, 52414), (303, 52615), (305, 52621), (307, 52627), (331, 52738), (333, 52744), (357, 52876), (367, 52936),

Gene: Yikes_67 Start: 44984, Stop: 46147, Start Num: 67

Candidate Starts for Yikes_67:

(Start: 67 @44984 has 78 MA's), (Start: 73 @44999 has 1 MA's), (102, 45128), (129, 45218), (130, 45221), (142, 45257), (151, 45290), (190, 45404), (198, 45431), (205, 45470), (206, 45485), (219, 45515), (227, 45545), (236, 45575), (248, 45623), (263, 45698), (279, 45719), (291, 45758), (321, 45860), (330, 45914), (333, 45923), (336, 45932), (341, 45956), (356, 46049), (373, 46139),

Gene: Yndexa_67 Start: 51527, Stop: 50328, Start Num: 67

Candidate Starts for Yndexa_67:

(Start: 67 @51527 has 78 MA's), (127, 51308), (134, 51284), (143, 51248), (144, 51245), (145, 51242), (151, 51215), (155, 51197), (169, 51140), (227, 50942), (248, 50864), (266, 50777), (291, 50684), (296, 50669), (306, 50639), (307, 50636), (312, 50624), (321, 50582), (333, 50519), (336, 50510), (353, 50408), (354, 50402),

Gene: Zanella_42 Start: 27511, Stop: 28524, Start Num: 30

Candidate Starts for Zanella_42:

(Start: 30 @27511 has 14 MA's), (103, 27721), (125, 27790), (151, 27874), (172, 27958), (198, 28009), (212, 28078), (214, 28081), (250, 28183), (251, 28189), (282, 28273), (286, 28288), (302, 28339), (316, 28387), (328, 28450),

Gene: Zany_63 Start: 44385, Stop: 45548, Start Num: 67

Candidate Starts for Zany_63:

(Start: 67 @44385 has 78 MA's), (Start: 73 @44400 has 1 MA's), (102, 44529), (129, 44619), (130, 44622), (142, 44658), (151, 44691), (190, 44805), (198, 44832), (205, 44871), (206, 44886), (219, 44916), (227, 44946), (236, 44976), (248, 45024), (291, 45159), (321, 45261), (330, 45315), (333, 45324), (336, 45333), (341, 45357), (356, 45450), (373, 45540),

Gene: Zenon_71 Start: 51725, Stop: 52894, Start Num: 67

Candidate Starts for Zenon_71:

(Start: 67 @51725 has 78 MA's), (Start: 73 @51740 has 1 MA's), (81, 51782), (88, 51815), (147, 52016), (151, 52031), (190, 52163), (205, 52226), (206, 52241), (242, 52358), (303, 52559), (305, 52565), (307, 52571), (331, 52682), (333, 52688), (357, 52820), (367, 52880),

Gene: Zion_69 Start: 50318, Stop: 49200, Start Num: 70

Candidate Starts for Zion_69:

(Start: 70 @50318 has 10 MA's), (101, 50183), (118, 50132), (138, 50069), (151, 50018), (161, 49976), (169, 49943), (175, 49922), (193, 49880), (196, 49871), (198, 49862), (205, 49826), (219, 49772), (263, 49589), (328, 49400), (333, 49379), (340, 49349), (352, 49277), (355, 49262), (356, 49253),

Gene: Zooman_97 Start: 74278, Stop: 73343, Start Num: 62

Candidate Starts for Zooman_97:

(Start: 62 @74278 has 6 MA's), (87, 74176), (88, 74173), (92, 74161), (100, 74125), (119, 74071), (141, 74020), (148, 73993), (151, 73981), (169, 73897), (171, 73891), (190, 73876), (197, 73852), (220, 73765), (228, 73735), (302, 73552), (303, 73549), (316, 73504), (329, 73438), (336, 73411),

Gene: Zorro_42 Start: 27635, Stop: 28582, Start Num: 60

Candidate Starts for Zorro_42:

(Start: 60 @27635 has 65 MA's), (99, 27767), (102, 27779), (103, 27782), (110, 27806), (139, 27902), (151, 27950), (159, 27980), (166, 28007), (196, 28079), (241, 28229), (244, 28238), (275, 28325), (293, 28373), (314, 28433), (328, 28508), (336, 28538), (337, 28541),