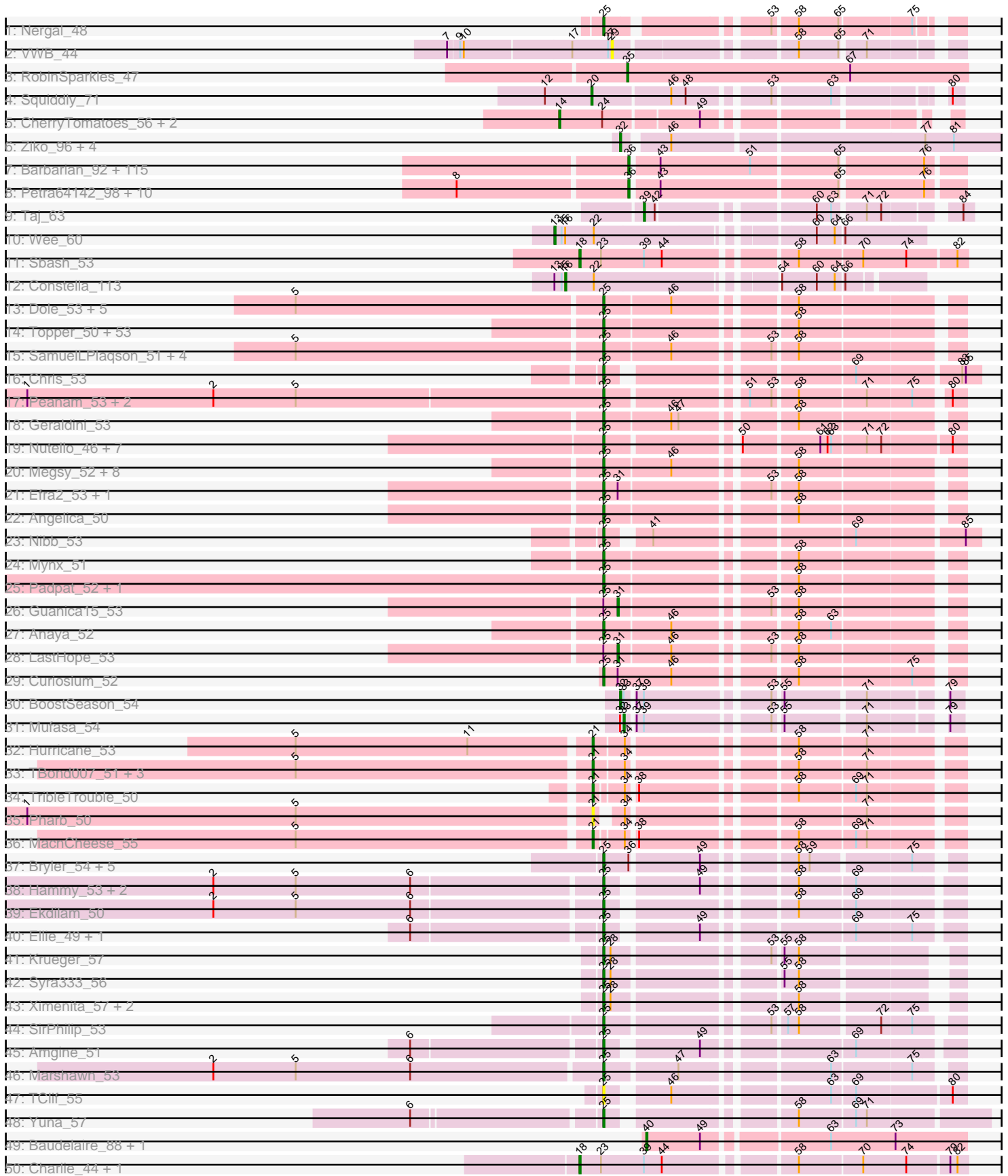
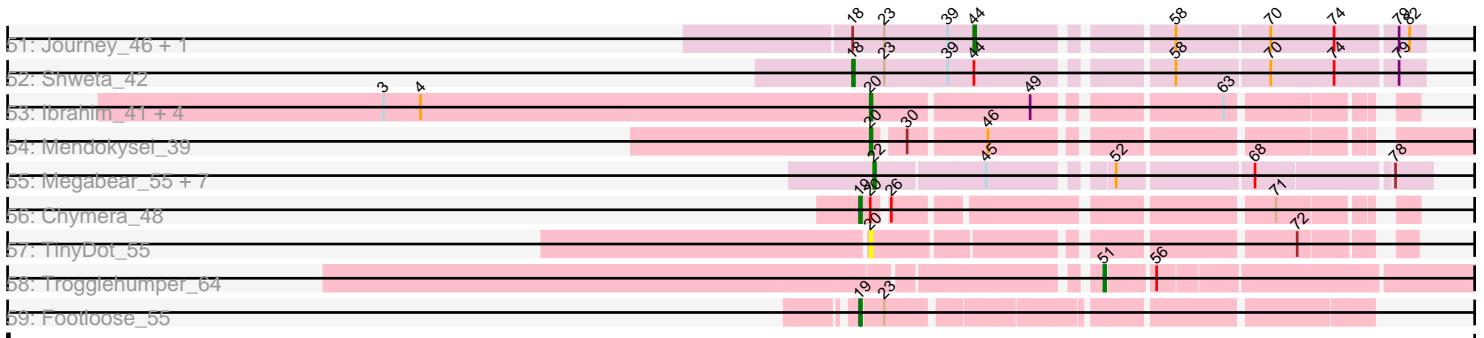


Pham 157524



Pham 157524



Note: Tracks are now grouped by subcluster and scaled. Switching in subcluster is indicated by changes in track color. Track scale is now set by default to display the region 30 bp upstream of start 1 to 30 bp downstream of the last possible start. If this default region is judged to be packed too tightly with annotated starts, the track will be further scaled to only show that region of the ORF with annotated starts. This action will be indicated by adding "Zoomed" to the title. For starts, yellow indicates the location of called starts comprised solely of Glimmer/GeneMark auto-annotations, green indicates the location of called starts with at least 1 manual gene annotation.

Pham 157524 Report

This analysis was run 04/13/24 on database version 558.

Pham number 157524 has 298 members, 22 are drafts.

Phages represented in each track:

- Track 1 : Nergal_48
- Track 2 : VWB_44
- Track 3 : RobinSparkles_47
- Track 4 : Squiddly_71
- Track 5 : CherryTomatoes_56, Pupper_53, SCentae_53
- Track 6 : Ziko_96, Ronaldo_96, Guey18_98, Volt_97, Fryberger_93
- Track 7 : Barbarian_92, GoldenSpark_97, Bruin_90, HanKaySha_94, xkcd_96, ShereKhan_91, Lilpickle_92, DrDrey_93, Adnama_97, Hopey_94, BigBubba_93, IHOP_91, Dusk_90, Bench_96, Command613_95, MPhalcon_94, Harella_93, Quallification_94, Filch_95, Terminus_96, Gemini_98, Rakim_94, Mosby_89, Ukulele_88, Marshmallow_91, Highbury_92, AmericanBeauty_100, Henry_91, Czyszczon1_94, CrystalP_92, Stark_95, Willez_88, PhatBacter_97, Mindy_92, NelitzaMV_91, Myrale_93, Easy2Say_94, Manda_95, Cjw1_94, Teaspoon_90, Nimrod_94, Pumpkin_97, Kostya_93, MadamMonkfish_93, Moldemort_96, YassJohnny_90, Eureka_92, ShamWow_93, Traaww1_89, ChosenOne_93, SophKB_90, TeardropMSU_89, Tomaszewski_88, Hoonter_96, BadStone_90, ABCat_90, StellaBean_89, BaboJay_93, Inca_90, Sassay_88, Youngblood_96, NoSleep_94, Wiggin_95, Phaja_91, Stank_96, SirDuracell_93, Emmina_93, Sotrice96_94, RiverMonster_94, Goku_92, GooberAzure_96, Xandras_92, Cactus_96, Murphy_93, BilboSwaggins_92, Thresher_96, Holt_98, Contagion_89, Argent26_97, Kanye_90, Murica_96, Paperbeatsrock_92, Lilac_96, Elite2014_92, Nala_95, FireRed_97, Misfit_94, Maxxinista_96, JeTaime_94, Asriel_91, 244_94, Flypotenuse_89, StolenFromERC_96, Elph10_94, Tuco_94, TBrady12_96, Toto_91, Miniwave_88, OrionPax_92, Amao_93, HufflyPuff_95, Lilizi_94, Dumbo_93, Goldilocks_96, MISSy_94, Phrux_91, Porky_92, Phaux_96, Kimchi_97, Tarkin_92, Icee_94, Gage_95, Saints25_92, Simpliphy_92, Pharsalus_90, Glexan_92
- Track 8 : Petra64142_98, DoctorDiddles_92, Pat3_90, Balomoji_93, ChotaBhai_93, Gator_91, Buck_94, Cookies_90, Bask21_93, Daikon_94, Rimmer_91
- Track 9 : Taj_63
- Track 10 : Wee_60
- Track 11 : Sbash_53
- Track 12 : Constella_113
- Track 13 : Dole_53, Illumine_53, Ageofdapage_52, Murucutumbu_51, Stinson_51, Devera_55
- Track 14 : Topper_50, ActinUp_50, Padfoot_50, Slimphazie_50, Llorens_50, Dalmuri_50, BarrelRoll_50, Hyperbowlee_50, Jayhawk_51, Jeckyll_50, CREW_50, Durfee_50, AlishaPH_50, Rosmarinus_50, TruffulaTree_50, Boiii_50,

BaghaKamala_49, Jarvi_50, BGlluviae_50, Asayake_50, Joy99_50, Atiba_51, CheetoDust_49, Zavala_52, Blizzard_50, Zabiza_46, Apocalypse_53, Adonis_50, Belladonna_50, Adephagia_50, BEEEST_50, Homura_50, YoureAdopted_49, Inky_50, Capricorn_50, Beezoo_52, Lunahalos_50, JAWS_50, Spock_50, Veliki_51, TaiwanKao_52, Ganymede_51, HedwigODU_50, QuincyRose_49, Piatt_50, Sulley_50, MeaningOfLife_51, Tachez_50, ShiaSurprise_51, Twitch_50, Peel_50, Rapunzel97_51, Ramen_51, CaseJules_52

- Track 15 : SamuelLPlaqson_51, DrHayes_51, Bella96_51, TiniBug_51, Urkel_51
- Track 16 : Chris_53
- Track 17 : Peanam_53, Niklas_53, Shaobing_53
- Track 18 : Geraldini_53
- Track 19 : Nutello_46, Amelie_46, Nikao_49, LilPharaoh_46, SgtBeansprout_46, Binglebops_46, Enkosi_48, Mdavu_47
- Track 20 : Megsy_52, LaterM_51, Tiri_51, Prithvi_51, LindNT_49, Deby_50, TreyKay_51, CrimD_50, Pokerus_49
- Track 21 : Efra2_53, Yunkel11_53
- Track 22 : Angelica_50
- Track 23 : Nibb_53
- Track 24 : Mynx_51
- Track 25 : Padpat_52, Emerson_51
- Track 26 : Guanica15_53
- Track 27 : Anaya_52
- Track 28 : LastHope_53
- Track 29 : Curiosium_52
- Track 30 : BoostSeason_54
- Track 31 : Mufasa_54
- Track 32 : Hurricane_53
- Track 33 : TBond007_51, Keshu_55, Pixie_52, ShedlockHolmes_54
- Track 34 : TribbleTrouble_50
- Track 35 : Pharb_50
- Track 36 : MacnCheese_55
- Track 37 : Bryler_54, Unicorn_53, Tierra_54, PhelpsODU_53, Cain_54, Phrank_54
- Track 38 : Hammy_53, DarthP_53, Amohnition_53
- Track 39 : Ekdilam_50
- Track 40 : Ellie_49, Fefferhead_51
- Track 41 : Krueger_57
- Track 42 : Syra333_56
- Track 43 : Ximenita_57, Shadow1_56, Sunflower1121_57
- Track 44 : SirPhilip_53
- Track 45 : Amgine_51
- Track 46 : Marshawn_53
- Track 47 : TClif_55
- Track 48 : Yuna_57
- Track 49 : Baudelaire_88, Aegeus_88
- Track 50 : Charlie_44, Sejanus_58
- Track 51 : Journey_46, SkinnyPete_42
- Track 52 : Shweta_42
- Track 53 : Ibrahim_41, Bernal13_41, ZenTime222_40, RonRayGun_41, Nairb_40
- Track 54 : Mendokysei_39
- Track 55 : Megabear_55, GodPhather_56, Cepens_55, D12_54, PR_55, Argie_56, Taptic_55, Jeon_55
- Track 56 : Chymera_48
- Track 57 : TinyDot_55

- Track 58 : Trogglehumper_64
- Track 59 : Footloose_55

Summary of Final Annotations (See graph section above for start numbers):

The start number called the most often in the published annotations is 36, it was called in 116 of the 276 non-draft genes in the pham.

Genes that call this "Most Annotated" start:

- 244_94, ABCat_90, Adnama_97, Amao_93, AmericanBeauty_100, Argent26_97, Asriel_91, BaboJay_93, BadStone_90, Balomoji_93, Barbarian_92, Bask21_93, Bench_96, BigBubba_93, BilboSwaggins_92, Bruin_90, Buck_94, Cactus_96, ChosenOne_93, ChotaBhai_93, Cjw1_94, Command613_95, Contagion_89, Cookies_90, CrystalP_92, Czyszczonek1_94, Daikon_94, DoctorDiddles_92, DrDrey_93, Dumbo_93, Dusk_90, Easy2Say_94, Elite2014_92, Elph10_94, Emmina_93, Eureka_92, Filch_95, FireRed_97, Flypotenuse_89, Gage_95, Gator_91, Gemini_98, Glexan_92, Goku_92, GoldenSpark_97, Goldilocks_96, GooberAzure_96, HanKaySha_94, Harella_93, Henry_91, Highbury_92, Holt_98, Hoonter_96, Hopey_94, HufflyPuff_95, IHOP_91, Icee_94, Inca_90, JeTaime_94, Kanye_90, Kimchi_97, Kostya_93, Lilac_96, Lilizi_94, Lilpickle_92, MISSy_94, MPhalcon_94, MadamMonkfish_93, Manda_95, Marshmallow_91, Maxxinista_96, Mindy_92, Miniwave_88, Misfit_94, Moldemort_96, Mosby_89, Murica_96, Murphy_93, Myrale_93, Nala_95, NelitzaMV_91, Nimrod_94, NoSleep_94, OrionPax_92, Paperbeatsrock_92, Pat3_90, Petra64142_98, Phaja_91, Pharsalus_90, PhatBacter_97, Phaux_96, Phrux_91, Porky_92, Pumpkin_97, Quallification_94, Rakim_94, Rimmer_91, RiverMonster_94, Saints25_92, Sassay_88, ShamWow_93, ShereKhan_91, Simpliphy_92, SirDuracell_93, SophKB_90, Sotrice96_94, Stank_96, Stark_95, StellaBean_89, StolenFromERC_96, TBrady12_96, Tarkin_92, TeardropMSU_89, Teaspoon_90, Terminus_96, Thresher_96, Tomaszewski_88, Toto_91, Traaww1_89, Tuco_94, Ukulele_88, Wiggins_95, Willez_88, Xandras_92, YassJohnny_90, Youngblood_96, xkcd_96,

Genes that have the "Most Annotated" start but do not call it:

- Bryler_54, Cain_54, PhelpsODU_53, Phrank_54, Tierra_54, Unicorn_53,

Genes that do not have the "Most Annotated" start:

- ActinUp_50, Adephegia_50, Adonis_50, Aegeus_88, Ageofdapage_52, AlishaPH_50, Amelie_46, Amgine_51, Amohnition_53, Anaya_52, Angelica_50, Apocalypse_53, Argie_56, Asayake_50, Atiba_51, BEEST_50, BGIlluvia_50, BaghaKamala_49, BarrelRoll_50, Baudelaire_88, Beezoo_52, Bella96_51, Belladonna_50, Bernal13_41, Biglebops_46, Blizzard_50, Boiiii_50, BoostSeason_54, CREW_50, Capricorn_50, CaseJules_52, Cepens_55, Charlie_44, CheetoDust_49, CherryTomatoes_56, Chris_53, Chymera_48, Constella_113, CrimD_50, Curiosium_52, D12_54, Dalmuri_50, DarthP_53, Deby_50, Devera_55, Dole_53, DrHayes_51, Durfee_50, Efra2_53, Ekdilam_50, Ellie_49, Emerson_51, Enkosi_48, Fefferhead_51, Footloose_55, Fryberger_93, Ganymede_51, Geraldini_53, GodPhather_56, Guanica15_53, Guey18_98, Hammy_53, HedwigODU_50, Homura_50, Hurricane_53, Hyperbowlee_50, Ibrahim_41, Illumine_53, Inky_50, JAWS_50, Jarvi_50, Jayhawk_51, Jeckyll_50, Jeon_55, Journey_46, Joy99_50, Keshu_55, Krueger_57, LastHope_53, LaterM_51,

LilPharaoh_46, LindNT_49, Llorens_50, Lunahalos_50, MacnCheese_55, Marshawn_53, Mdavu_47, MeaningOfLife_51, Megabear_55, Megsy_52, Mendokyse_39, Mufasa_54, Murucutumbu_51, Mynx_51, Nairb_40, Nergal_48, Nibb_53, Nikao_49, Niklas_53, Nutello_46, PR_55, Padfoot_50, Padpat_52, Peanam_53, Peel_50, Pharb_50, Piatt_50, Pixie_52, Pokerus_49, Prithvi_51, Pupper_53, QuincyRose_49, Ramen_51, Rapunzel97_51, RobinSparkles_47, RonRayGun_41, Ronaldo_96, Rosmarinus_50, SCentae_53, SamuelLPlaqson_51, Sbash_53, Sejanus_58, SgtBeansprout_46, Shadow1_56, Shaobing_53, ShedlockHolmes_54, ShiaSurprise_51, Shweta_42, SirPhilip_53, SkinnyPete_42, Slimphazie_50, Spock_50, Squiddly_71, Stinson_51, Sulley_50, Sunflower1121_57, Syra333_56, TBond007_51, TClif_55, Tachez_50, TaiwanKao_52, Taj_63, Taptic_55, TiniBug_51, TinyDot_55, Tiri_51, Topper_50, TreyKay_51, TribbleTrouble_50, Trogglehumper_64, TruffulaTree_50, Twitch_50, Urkel_51, VWB_44, Veliki_51, Volt_97, Wee_60, Ximenita_57, YoureAdopted_49, Yuna_57, Yunkel11_53, Zabiza_46, Zavala_52, ZenTime222_40, Ziko_96,

Summary by start number:

Start 13:

- Found in 2 of 298 (0.7%) of genes in pham
- Manual Annotations of this start: 1 of 276
- Called 50.0% of time when present
- Phage (with cluster) where this start called: Wee_60 (F1),

Start 14:

- Found in 3 of 298 (1.0%) of genes in pham
- Manual Annotations of this start: 2 of 276
- Called 100.0% of time when present
- Phage (with cluster) where this start called: CherryTomatoes_56 (DO), Pupper_53 (DO), SCentae_53 (DO),

Start 16:

- Found in 2 of 298 (0.7%) of genes in pham
- Manual Annotations of this start: 1 of 276
- Called 50.0% of time when present
- Phage (with cluster) where this start called: Constella_113 (J),

Start 18:

- Found in 6 of 298 (2.0%) of genes in pham
- Manual Annotations of this start: 4 of 276
- Called 66.7% of time when present
- Phage (with cluster) where this start called: Charlie_44 (N), Sbash_53 (I2), Sejanus_58 (AD), Shweta_42 (N),

Start 19:

- Found in 2 of 298 (0.7%) of genes in pham
- Manual Annotations of this start: 2 of 276
- Called 100.0% of time when present
- Phage (with cluster) where this start called: Chymera_48 (singleton), Footloose_55 (singleton),

Start 20:

- Found in 9 of 298 (3.0%) of genes in pham

- Manual Annotations of this start: 7 of 276
- Called 88.9% of time when present
- Phage (with cluster) where this start called: Bernal13_41 (T), Ibrahim_41 (T), Mendokysei_39 (T), Nairb_40 (T), RonRayGun_41 (T), Squiddly_71 (DN2), TinyDot_55 (singleton), ZenTime222_40 (T),

Start 21:

- Found in 8 of 298 (2.7%) of genes in pham
- Manual Annotations of this start: 7 of 276
- Called 100.0% of time when present
- Phage (with cluster) where this start called: Hurricane_53 (K3), Keshu_55 (K3), MacnCheese_55 (K3), Pharb_50 (K3), Pixie_52 (K3), ShedlockHolmes_54 (K3), TBond007_51 (K3), TripleTrouble_50 (K3),

Start 22:

- Found in 10 of 298 (3.4%) of genes in pham
- Manual Annotations of this start: 8 of 276
- Called 80.0% of time when present
- Phage (with cluster) where this start called: Argie_56 (W), Cepens_55 (W), D12_54 (W), GodPhather_56 (W), Jeon_55 (W), Megabear_55 (W), PR_55 (W), Taptic_55 (W),

Start 25:

- Found in 121 of 298 (40.6%) of genes in pham
- Manual Annotations of this start: 113 of 276
- Called 98.3% of time when present
- Phage (with cluster) where this start called: ActinUp_50 (K1), Adephagia_50 (K1), Adonis_50 (K1), Ageofdapage_52 (K1), AlishaPH_50 (K1), Amelie_46 (K1), Amgine_51 (K6), Amohnition_53 (K6), Anaya_52 (K1), Angelica_50 (K1), Apocalypse_53 (K1), Asayake_50 (K1), Atiba_51 (K1), BEEST_50 (K1), BGIlluvia_50 (K1), BaghaKamala_49 (K1), BarrelRoll_50 (K1), Beezoo_52 (K1), Bella96_51 (K1), Belladonna_50 (K1), Binglebops_46 (K1), Blizzard_50 (K1), Boiii_50 (K1), Bryler_54 (K6), CREW_50 (K1), Cain_54 (K6), Capricorn_50 (K1), CaseJules_52 (K1), CheetoDust_49 (K1), Chris_53 (K1), CrimD_50 (K1), Curiosium_52 (K1), Dalmuri_50 (K1), DARTH_53 (K6), Deby_50 (K1), Devera_55 (K1), Dole_53 (K1), DrHayes_51 (K1), Durfee_50 (K1), Efra2_53 (K1), Ekdilam_50 (K6), Ellie_49 (K6), Emerson_51 (K1), Enkosi_48 (K1), Fefferhead_51 (K6), Ganymede_51 (K1), Geraldini_53 (K1), Hammy_53 (K6), HedwigODU_50 (K1), Homura_50 (K1), Hyperbowlee_50 (K1), Illumine_53 (K1), Inky_50 (K1), JAWS_50 (K1), Jarvi_50 (K1), Jayhawk_51 (K1), Jeckyll_50 (K1), Joy99_50 (K1), Krueger_57 (K6), LaterM_51 (K1), LilPharaoh_46 (K1), LindNT_49 (K1), Llorens_50 (K1), Lunahalos_50 (K1), Marshawn_53 (K6), Mdavu_47 (K1), MeaningOfLife_51 (K1), Megsy_52 (K1), Murucutumbu_51 (K1), Mynx_51 (K1), Nergal_48 (AG), Nibb_53 (K1), Nikao_49 (K1), Niklas_53 (K1), Nutello_46 (K1), Padfoot_50 (K1), Padpat_52 (K1), Peanam_53 (K1), Peel_50 (K1), PhelpsODU_53 (K6), Phrank_54 (K6), Piatt_50 (K1), Pokerus_49 (K1), Prithvi_51 (K1), QuincyRose_49 (K1), Ramen_51 (K1), Rapunzel97_51 (K1), Rosmarinus_50 (K1), SamuelLPlaqson_51 (K1), SgtBeansprout_46 (K1), Shadow1_56 (K6), Shaobing_53 (K1), ShiaSurprise_51 (K1), SirPhilip_53 (K6), Slimphazie_50 (K1), Spock_50 (K1), Stinson_51 (K1), Sulley_50 (K1), Sunflower1121_57 (K6), Syra333_56 (K6), TClif_55 (K6), Tachez_50 (K1), TaiwanKao_52 (K1), Tierra_54 (K6), TiniBug_51 (K1), Tiri_51 (K1), Topper_50 (K1), TreyKay_51 (K1), TruffulaTree_50 (K1), Twitch_50 (K1), Unicorn_53 (K6), Urkel_51 (K1), Veliki_51 (K1), Ximenita_57 (K6), YoureAdopted_49 (K1), Yuna_57

(K6), Yunkel11_53 (K1), Zabiza_46 (K1), Zavala_52 (K1),

Start 29:

- Found in 1 of 298 (0.3%) of genes in pham
- No Manual Annotations of this start.
- Called 100.0% of time when present
- Phage (with cluster) where this start called: VWB_44 (BA),

Start 31:

- Found in 5 of 298 (1.7%) of genes in pham
- Manual Annotations of this start: 2 of 276
- Called 40.0% of time when present
- Phage (with cluster) where this start called: Guanica15_53 (K1), LastHope_53 (K1),

Start 32:

- Found in 7 of 298 (2.3%) of genes in pham
- Manual Annotations of this start: 6 of 276
- Called 85.7% of time when present
- Phage (with cluster) where this start called: BoostSeason_54 (K2), Fryberger_93 (DP), Guey18_98 (DP), Ronaldo_96 (DP), Volt_97 (DP), Ziko_96 (DP),

Start 33:

- Found in 2 of 298 (0.7%) of genes in pham
- Manual Annotations of this start: 1 of 276
- Called 50.0% of time when present
- Phage (with cluster) where this start called: Mufasa_54 (K2),

Start 35:

- Found in 1 of 298 (0.3%) of genes in pham
- Manual Annotations of this start: 1 of 276
- Called 100.0% of time when present
- Phage (with cluster) where this start called: RobinSparkles_47 (CX),

Start 36:

- Found in 133 of 298 (44.6%) of genes in pham
- Manual Annotations of this start: 116 of 276
- Called 95.5% of time when present
- Phage (with cluster) where this start called: 244_94 (E), ABCat_90 (E), Adnama_97 (E), Amao_93 (E), AmericanBeauty_100 (E), Argent26_97 (E), Asriel_91 (E), BaboJay_93 (E), BadStone_90 (E), Balomoji_93 (E), Barbarian_92 (E), Bask21_93 (E), Bench_96 (E), BigBubba_93 (E), BilboSwaggins_92 (E), Bruin_90 (E), Buck_94 (E), Cactus_96 (E), ChosenOne_93 (E), ChotaBhai_93 (E), Cjw1_94 (E), Command613_95 (E), Contagion_89 (E), Cookies_90 (E), CrystalP_92 (E), Czyszczonek_94 (E), Daikon_94 (E), DoctorDiddles_92 (E), DrDrey_93 (E), Dumbo_93 (E), Dusk_90 (E), Easy2Say_94 (E), Elite2014_92 (E), Elph10_94 (E), Emmina_93 (E), Eureka_92 (E), Filch_95 (E), FireRed_97 (E), Flypotenuse_89 (E), Gage_95 (E), Gator_91 (E), Gemini_98 (E), Glexan_92 (E), Goku_92 (E), GoldenSpark_97 (E), Goldilocks_96 (E), GooberAzure_96 (E), HanKaySha_94 (E), Harella_93 (E), Henry_91 (E), Highbury_92 (E), Holt_98 (E), Hoonter_96 (E), Hopey_94 (E), HufflyPuff_95 (E), IHOP_91 (E), Icee_94 (E), Inca_90 (E), JeTaimie_94 (E), Kanye_90 (E), Kimchi_97 (E), Kostya_93 (E), Lilac_96 (E), Lilizi_94 (E), Lilpickle_92 (E), MISSy_94 (E), MPhalcon_94 (E), MadamMonkfish_93 (E), Manda_95 (E), Marshmallow_91 (E), Maxxinista_96 (E), Mindy_92 (E), Miniwave_88

(E), Misfit_94 (E), Moldemort_96 (E), Mosby_89 (E), Murica_96 (E), Murphy_93 (E), Myrale_93 (E), Nala_95 (E), NelitzaMV_91 (E), Nimrod_94 (E), NoSleep_94 (E), OrionPax_92 (E), Paperbeatsrock_92 (E), Pat3_90 (E), Petra64142_98 (E), Phaja_91 (E), Pharsalus_90 (E), PhatBacter_97 (E), Phaux_96 (E), Phrux_91 (E), Porky_92 (E), Pumpkin_97 (E), Qualification_94 (E), Rakim_94 (E), Rimmer_91 (E), RiverMonster_94 (E), Saints25_92 (E), Sassay_88 (E), ShamWow_93 (E), ShereKhan_91 (E), Simpliphy_92 (E), SirDuracell_93 (E), SophKB_90 (E), Sotrice96_94 (E), Stank_96 (E), Stark_95 (E), StellaBean_89 (E), StolenFromERC_96 (E), TBrady12_96 (E), Tarkin_92 (E), TeardropMSU_89 (E), Teaspoon_90 (E), Terminus_96 (E), Thresher_96 (E), Tomaszewski_88 (E), Toto_91 (E), Traaww1_89 (E), Tuco_94 (E), Ukulele_88 (E), Wiggin_95 (E), Willez_88 (E), Xandras_92 (E), YassJohnny_90 (E), Youngblood_96 (E), xkcd_96 (E),

Start 39:

- Found in 9 of 298 (3.0%) of genes in pham
- Manual Annotations of this start: 1 of 276
- Called 11.1% of time when present
- Phage (with cluster) where this start called: Taj_63 (F1),

Start 40:

- Found in 2 of 298 (0.7%) of genes in pham
- Manual Annotations of this start: 2 of 276
- Called 100.0% of time when present
- Phage (with cluster) where this start called: Aegeus_88 (L5), Baudelaire_88 (L5),

Start 44:

- Found in 6 of 298 (2.0%) of genes in pham
- Manual Annotations of this start: 1 of 276
- Called 33.3% of time when present
- Phage (with cluster) where this start called: Journey_46 (N), SkinnyPete_42 (N),

Start 51:

- Found in 120 of 298 (40.3%) of genes in pham
- Manual Annotations of this start: 1 of 276
- Called 0.8% of time when present
- Phage (with cluster) where this start called: Trogglehumper_64 (singleton),

Summary by clusters:

There are 20 clusters represented in this pham: F1, singleton, I2, E, AD, AG, DO, J, BA, L5, N, K3, K2, K1, CX, K6, W, DN2, DP, T,

Info for manual annotations of cluster AD:

- Start number 18 was manually annotated 1 time for cluster AD.

Info for manual annotations of cluster AG:

- Start number 25 was manually annotated 1 time for cluster AG.

Info for manual annotations of cluster CX:

- Start number 35 was manually annotated 1 time for cluster CX.

Info for manual annotations of cluster DN2:

- Start number 20 was manually annotated 1 time for cluster DN2.

Info for manual annotations of cluster DO:

- Start number 14 was manually annotated 2 times for cluster DO.

Info for manual annotations of cluster DP:

- Start number 32 was manually annotated 5 times for cluster DP.

Info for manual annotations of cluster E:

- Start number 36 was manually annotated 116 times for cluster E.

Info for manual annotations of cluster F1:

- Start number 13 was manually annotated 1 time for cluster F1.
- Start number 39 was manually annotated 1 time for cluster F1.

Info for manual annotations of cluster I2:

- Start number 18 was manually annotated 1 time for cluster I2.

Info for manual annotations of cluster J:

- Start number 16 was manually annotated 1 time for cluster J.

Info for manual annotations of cluster K1:

- Start number 25 was manually annotated 91 times for cluster K1.
- Start number 31 was manually annotated 2 times for cluster K1.

Info for manual annotations of cluster K2:

- Start number 32 was manually annotated 1 time for cluster K2.
- Start number 33 was manually annotated 1 time for cluster K2.

Info for manual annotations of cluster K3:

- Start number 21 was manually annotated 7 times for cluster K3.

Info for manual annotations of cluster K6:

- Start number 25 was manually annotated 21 times for cluster K6.

Info for manual annotations of cluster L5:

- Start number 40 was manually annotated 2 times for cluster L5.

Info for manual annotations of cluster N:

- Start number 18 was manually annotated 2 times for cluster N.
- Start number 44 was manually annotated 1 time for cluster N.

Info for manual annotations of cluster T:

- Start number 20 was manually annotated 6 times for cluster T.

Info for manual annotations of cluster W:

- Start number 22 was manually annotated 8 times for cluster W.

Gene Information:

Gene: 244_94 Start: 56440, Stop: 56700, Start Num: 36

Candidate Starts for 244_94:

(Start: 36 @56440 has 116 MA's), (43, 56461), (Start: 51 @56536 has 1 MA's), (65, 56605), (76, 56671),

Gene: ABCat_90 Start: 57128, Stop: 57388, Start Num: 36

Candidate Starts for ABCat_90:

(Start: 36 @57128 has 116 MA's), (43, 57149), (Start: 51 @57224 has 1 MA's), (65, 57293), (76, 57359),

Gene: ActinUp_50 Start: 37356, Stop: 37619, Start Num: 25

Candidate Starts for ActinUp_50:

(Start: 25 @37356 has 113 MA's), (58, 37497),

Gene: Adephagia_50 Start: 37353, Stop: 37616, Start Num: 25

Candidate Starts for Adephagia_50:

(Start: 25 @37353 has 113 MA's), (58, 37494),

Gene: Adnama_97 Start: 56736, Stop: 56996, Start Num: 36

Candidate Starts for Adnama_97:

(Start: 36 @56736 has 116 MA's), (43, 56757), (Start: 51 @56832 has 1 MA's), (65, 56901), (76, 56967),

Gene: Adonis_50 Start: 37651, Stop: 37914, Start Num: 25

Candidate Starts for Adonis_50:

(Start: 25 @37651 has 113 MA's), (58, 37792),

Gene: Aegeus_88 Start: 54840, Stop: 55091, Start Num: 40

Candidate Starts for Aegeus_88:

(Start: 40 @54840 has 2 MA's), (49, 54885), (63, 54978), (73, 55032),

Gene: Ageofdapage_52 Start: 38336, Stop: 38599, Start Num: 25

Candidate Starts for Ageofdapage_52:

(5, 38084), (Start: 25 @38336 has 113 MA's), (46, 38390), (58, 38477),

Gene: AlishaPH_50 Start: 37626, Stop: 37889, Start Num: 25

Candidate Starts for AlishaPH_50:

(Start: 25 @37626 has 113 MA's), (58, 37767),

Gene: Amao_93 Start: 56248, Stop: 56508, Start Num: 36

Candidate Starts for Amao_93:

(Start: 36 @56248 has 116 MA's), (43, 56269), (Start: 51 @56344 has 1 MA's), (65, 56413), (76, 56479),

Gene: Amelie_46 Start: 37040, Stop: 37309, Start Num: 25

Candidate Starts for Amelie_46:

(Start: 25 @37040 has 113 MA's), (50, 37136), (61, 37196), (62, 37202), (63, 37205), (71, 37232), (72, 37244), (80, 37298),

Gene: AmericanBeauty_100 Start: 57297, Stop: 57557, Start Num: 36

Candidate Starts for AmericanBeauty_100:

(Start: 36 @57297 has 116 MA's), (43, 57318), (Start: 51 @57393 has 1 MA's), (65, 57462), (76, 57528),

Gene: Amgine_51 Start: 38553, Stop: 38807, Start Num: 25
Candidate Starts for Amgine_51:
(6, 38403), (Start: 25 @38553 has 113 MA's), (49, 38619), (69, 38727),

Gene: Amohnition_53 Start: 38560, Stop: 38814, Start Num: 25
Candidate Starts for Amohnition_53:
(2, 38242), (5, 38311), (6, 38407), (Start: 25 @38560 has 113 MA's), (49, 38626), (58, 38689), (69, 38734),

Gene: Anaya_52 Start: 37953, Stop: 38216, Start Num: 25
Candidate Starts for Anaya_52:
(Start: 25 @37953 has 113 MA's), (46, 38007), (58, 38094), (63, 38121),

Gene: Angelica_50 Start: 37583, Stop: 37846, Start Num: 25
Candidate Starts for Angelica_50:
(Start: 25 @37583 has 113 MA's), (58, 37724),

Gene: Apocalypse_53 Start: 38362, Stop: 38625, Start Num: 25
Candidate Starts for Apocalypse_53:
(Start: 25 @38362 has 113 MA's), (58, 38503),

Gene: Argent26_97 Start: 56657, Stop: 56917, Start Num: 36
Candidate Starts for Argent26_97:
(Start: 36 @56657 has 116 MA's), (43, 56678), (Start: 51 @56753 has 1 MA's), (65, 56822), (76, 56888),

Gene: Argie_56 Start: 45292, Stop: 45573, Start Num: 22
Candidate Starts for Argie_56:
(Start: 22 @45292 has 8 MA's), (45, 45352), (52, 45409), (68, 45481), (78, 45553),

Gene: Asayake_50 Start: 37668, Stop: 37931, Start Num: 25
Candidate Starts for Asayake_50:
(Start: 25 @37668 has 113 MA's), (58, 37809),

Gene: Asriel_91 Start: 55073, Stop: 55333, Start Num: 36
Candidate Starts for Asriel_91:
(Start: 36 @55073 has 116 MA's), (43, 55094), (Start: 51 @55169 has 1 MA's), (65, 55238), (76, 55304),

Gene: Atiba_51 Start: 37316, Stop: 37579, Start Num: 25
Candidate Starts for Atiba_51:
(Start: 25 @37316 has 113 MA's), (58, 37457),

Gene: BEEST_50 Start: 37668, Stop: 37931, Start Num: 25
Candidate Starts for BEEST_50:
(Start: 25 @37668 has 113 MA's), (58, 37809),

Gene: BGlluviae_50 Start: 37471, Stop: 37734, Start Num: 25
Candidate Starts for BGlluviae_50:
(Start: 25 @37471 has 113 MA's), (58, 37612),

Gene: BaboJay_93 Start: 57319, Stop: 57579, Start Num: 36
Candidate Starts for BaboJay_93:

(Start: 36 @57319 has 116 MA's), (43, 57340), (Start: 51 @57415 has 1 MA's), (65, 57484), (76, 57550),

Gene: BadStone_90 Start: 56697, Stop: 56957, Start Num: 36

Candidate Starts for BadStone_90:

(Start: 36 @56697 has 116 MA's), (43, 56718), (Start: 51 @56793 has 1 MA's), (65, 56862), (76, 56928),

Gene: BaghaKamala_49 Start: 36791, Stop: 37054, Start Num: 25

Candidate Starts for BaghaKamala_49:

(Start: 25 @36791 has 113 MA's), (58, 36932),

Gene: Balomoji_93 Start: 56855, Stop: 57115, Start Num: 36

Candidate Starts for Balomoji_93:

(8, 56717), (Start: 36 @56855 has 116 MA's), (43, 56876), (65, 57020), (76, 57086),

Gene: Barbarian_92 Start: 55073, Stop: 55333, Start Num: 36

Candidate Starts for Barbarian_92:

(Start: 36 @55073 has 116 MA's), (43, 55094), (Start: 51 @55169 has 1 MA's), (65, 55238), (76, 55304),

Gene: BarrelRoll_50 Start: 37339, Stop: 37602, Start Num: 25

Candidate Starts for BarrelRoll_50:

(Start: 25 @37339 has 113 MA's), (58, 37480),

Gene: Bask21_93 Start: 55708, Stop: 55968, Start Num: 36

Candidate Starts for Bask21_93:

(8, 55570), (Start: 36 @55708 has 116 MA's), (43, 55729), (65, 55873), (76, 55939),

Gene: Baudelaire_88 Start: 54840, Stop: 55091, Start Num: 40

Candidate Starts for Baudelaire_88:

(Start: 40 @54840 has 2 MA's), (49, 54885), (63, 54978), (73, 55032),

Gene: Beezoo_52 Start: 38314, Stop: 38577, Start Num: 25

Candidate Starts for Beezoo_52:

(Start: 25 @38314 has 113 MA's), (58, 38455),

Gene: Bella96_51 Start: 38180, Stop: 38443, Start Num: 25

Candidate Starts for Bella96_51:

(5, 37928), (Start: 25 @38180 has 113 MA's), (46, 38234), (53, 38303), (58, 38321),

Gene: Belladonna_50 Start: 37471, Stop: 37734, Start Num: 25

Candidate Starts for Belladonna_50:

(Start: 25 @37471 has 113 MA's), (58, 37612),

Gene: Bench_96 Start: 56792, Stop: 57052, Start Num: 36

Candidate Starts for Bench_96:

(Start: 36 @56792 has 116 MA's), (43, 56813), (Start: 51 @56888 has 1 MA's), (65, 56957), (76, 57023),

Gene: Bernal13_41 Start: 31446, Stop: 31703, Start Num: 20

Candidate Starts for Bernal13_41:

(3, 31170), (4, 31191), (Start: 20 @31446 has 7 MA's), (49, 31530), (63, 31620),

Gene: BigBubba_93 Start: 56089, Stop: 56349, Start Num: 36

Candidate Starts for BigBubba_93:

(Start: 36 @56089 has 116 MA's), (43, 56110), (Start: 51 @56185 has 1 MA's), (65, 56254), (76, 56320),

Gene: Biglebops_46 Start: 37040, Stop: 37309, Start Num: 25

Candidate Starts for Biglebops_46:

(Start: 25 @37040 has 113 MA's), (50, 37136), (61, 37196), (62, 37202), (63, 37205), (71, 37232), (72, 37244), (80, 37298),

Gene: BilboSwaggins_92 Start: 57094, Stop: 57354, Start Num: 36

Candidate Starts for BilboSwaggins_92:

(Start: 36 @57094 has 116 MA's), (43, 57115), (Start: 51 @57190 has 1 MA's), (65, 57259), (76, 57325),

Gene: Blizzard_50 Start: 37668, Stop: 37931, Start Num: 25

Candidate Starts for Blizzard_50:

(Start: 25 @37668 has 113 MA's), (58, 37809),

Gene: Boiiii_50 Start: 37670, Stop: 37933, Start Num: 25

Candidate Starts for Boiiii_50:

(Start: 25 @37670 has 113 MA's), (58, 37811),

Gene: BoostSeason_54 Start: 39128, Stop: 39364, Start Num: 32

Candidate Starts for BoostSeason_54:

(Start: 32 @39128 has 6 MA's), (Start: 33 @39131 has 1 MA's), (37, 39137), (Start: 39 @39143 has 1 MA's), (53, 39233), (55, 39239), (71, 39302), (79, 39353),

Gene: Bruin_90 Start: 55671, Stop: 55931, Start Num: 36

Candidate Starts for Bruin_90:

(Start: 36 @55671 has 116 MA's), (43, 55692), (Start: 51 @55767 has 1 MA's), (65, 55836), (76, 55902),

Gene: Bryler_54 Start: 37154, Stop: 37411, Start Num: 25

Candidate Starts for Bryler_54:

(Start: 25 @37154 has 113 MA's), (Start: 36 @37175 has 116 MA's), (49, 37229), (58, 37292), (59, 37301), (75, 37379),

Gene: Buck_94 Start: 57360, Stop: 57620, Start Num: 36

Candidate Starts for Buck_94:

(8, 57222), (Start: 36 @57360 has 116 MA's), (43, 57381), (65, 57525), (76, 57591),

Gene: CREW_50 Start: 37471, Stop: 37734, Start Num: 25

Candidate Starts for CREW_50:

(Start: 25 @37471 has 113 MA's), (58, 37612),

Gene: Cactus_96 Start: 55737, Stop: 55997, Start Num: 36

Candidate Starts for Cactus_96:

(Start: 36 @55737 has 116 MA's), (43, 55758), (Start: 51 @55833 has 1 MA's), (65, 55902), (76, 55968),

Gene: Cain_54 Start: 37142, Stop: 37399, Start Num: 25

Candidate Starts for Cain_54:

(Start: 25 @37142 has 113 MA's), (Start: 36 @37163 has 116 MA's), (49, 37217), (58, 37280), (59, 37289), (75, 37367),

Gene: Capricorn_50 Start: 37471, Stop: 37734, Start Num: 25

Candidate Starts for Capricorn_50:

(Start: 25 @37471 has 113 MA's), (58, 37612),

Gene: CaseJules_52 Start: 37668, Stop: 37931, Start Num: 25

Candidate Starts for CaseJules_52:

(Start: 25 @37668 has 113 MA's), (58, 37809),

Gene: Cepens_55 Start: 45007, Stop: 45288, Start Num: 22

Candidate Starts for Cepens_55:

(Start: 22 @45007 has 8 MA's), (45, 45067), (52, 45124), (68, 45196), (78, 45268),

Gene: Charlie_44 Start: 30217, Stop: 30516, Start Num: 18

Candidate Starts for Charlie_44:

(Start: 18 @30217 has 4 MA's), (23, 30235), (Start: 39 @30271 has 1 MA's), (Start: 44 @30286 has 1 MA's), (58, 30382), (70, 30433), (74, 30469), (79, 30502), (82, 30508),

Gene: CheetoDust_49 Start: 36840, Stop: 37103, Start Num: 25

Candidate Starts for CheetoDust_49:

(Start: 25 @36840 has 113 MA's), (58, 36981),

Gene: CherryTomatoes_56 Start: 18497, Stop: 18778, Start Num: 14

Candidate Starts for CherryTomatoes_56:

(Start: 14 @18497 has 2 MA's), (24, 18533), (49, 18608),

Gene: ChosenOne_93 Start: 56152, Stop: 56412, Start Num: 36

Candidate Starts for ChosenOne_93:

(Start: 36 @56152 has 116 MA's), (43, 56173), (Start: 51 @56248 has 1 MA's), (65, 56317), (76, 56383),

Gene: ChotaBhai_93 Start: 56073, Stop: 56333, Start Num: 36

Candidate Starts for ChotaBhai_93:

(8, 55935), (Start: 36 @56073 has 116 MA's), (43, 56094), (65, 56238), (76, 56304),

Gene: Chris_53 Start: 38292, Stop: 38561, Start Num: 25

Candidate Starts for Chris_53:

(Start: 25 @38292 has 113 MA's), (69, 38466), (83, 38547), (85, 38550),

Gene: Chymera_48 Start: 30948, Stop: 31208, Start Num: 19

Candidate Starts for Chymera_48:

(Start: 19 @30948 has 2 MA's), (Start: 20 @30954 has 7 MA's), (26, 30960), (71, 31149),

Gene: Cjw1_94 Start: 58116, Stop: 58376, Start Num: 36

Candidate Starts for Cjw1_94:

(Start: 36 @58116 has 116 MA's), (43, 58137), (Start: 51 @58212 has 1 MA's), (65, 58281), (76, 58347),

Gene: Command613_95 Start: 57191, Stop: 57451, Start Num: 36

Candidate Starts for Command613_95:

(Start: 36 @57191 has 116 MA's), (43, 57212), (Start: 51 @57287 has 1 MA's), (65, 57356), (76, 57422),

Gene: Constella_113 Start: 65296, Stop: 65556, Start Num: 16

Candidate Starts for Constella_113:

(Start: 13 @65287 has 1 MA's), (15, 65293), (Start: 16 @65296 has 1 MA's), (Start: 22 @65320 has 8 MA's), (54, 65452), (60, 65479), (64, 65494), (66, 65500),

Gene: Contagion_89 Start: 55952, Stop: 56212, Start Num: 36

Candidate Starts for Contagion_89:

(Start: 36 @55952 has 116 MA's), (43, 55973), (Start: 51 @56048 has 1 MA's), (65, 56117), (76, 56183),

Gene: Cookies_90 Start: 55930, Stop: 56190, Start Num: 36

Candidate Starts for Cookies_90:

(8, 55792), (Start: 36 @55930 has 116 MA's), (43, 55951), (65, 56095), (76, 56161),

Gene: CrimD_50 Start: 37577, Stop: 37840, Start Num: 25

Candidate Starts for CrimD_50:

(Start: 25 @37577 has 113 MA's), (46, 37631), (58, 37718),

Gene: CrystalP_92 Start: 57094, Stop: 57354, Start Num: 36

Candidate Starts for CrystalP_92:

(Start: 36 @57094 has 116 MA's), (43, 57115), (Start: 51 @57190 has 1 MA's), (65, 57259), (76, 57325),

Gene: Curiosium_52 Start: 36255, Stop: 36521, Start Num: 25

Candidate Starts for Curiosium_52:

(Start: 25 @36255 has 113 MA's), (Start: 31 @36267 has 2 MA's), (46, 36312), (58, 36399), (75, 36489),

Gene: Czyszczone1_94 Start: 56655, Stop: 56915, Start Num: 36

Candidate Starts for Czyszczone1_94:

(Start: 36 @56655 has 116 MA's), (43, 56676), (Start: 51 @56751 has 1 MA's), (65, 56820), (76, 56886),

Gene: D12_54 Start: 45555, Stop: 45836, Start Num: 22

Candidate Starts for D12_54:

(Start: 22 @45555 has 8 MA's), (45, 45615), (52, 45672), (68, 45744), (78, 45816),

Gene: Daikon_94 Start: 56682, Stop: 56942, Start Num: 36

Candidate Starts for Daikon_94:

(8, 56544), (Start: 36 @56682 has 116 MA's), (43, 56703), (65, 56847), (76, 56913),

Gene: Dalmuri_50 Start: 37471, Stop: 37734, Start Num: 25

Candidate Starts for Dalmuri_50:

(Start: 25 @37471 has 113 MA's), (58, 37612),

Gene: DarthP_53 Start: 38444, Stop: 38698, Start Num: 25

Candidate Starts for DarthP_53:

(2, 38126), (5, 38195), (6, 38291), (Start: 25 @38444 has 113 MA's), (49, 38510), (58, 38573), (69, 38618),

Gene: Deby_50 Start: 37599, Stop: 37862, Start Num: 25
Candidate Starts for Deby_50:
(Start: 25 @37599 has 113 MA's), (46, 37653), (58, 37740),

Gene: Devera_55 Start: 38103, Stop: 38366, Start Num: 25
Candidate Starts for Devera_55:
(5, 37851), (Start: 25 @38103 has 113 MA's), (46, 38157), (58, 38244),

Gene: DoctorDiddles_92 Start: 56117, Stop: 56377, Start Num: 36
Candidate Starts for DoctorDiddles_92:
(8, 55979), (Start: 36 @56117 has 116 MA's), (43, 56138), (65, 56282), (76, 56348),

Gene: Dole_53 Start: 38105, Stop: 38368, Start Num: 25
Candidate Starts for Dole_53:
(5, 37853), (Start: 25 @38105 has 113 MA's), (46, 38159), (58, 38246),

Gene: DrDrey_93 Start: 57574, Stop: 57834, Start Num: 36
Candidate Starts for DrDrey_93:
(Start: 36 @57574 has 116 MA's), (43, 57595), (Start: 51 @57670 has 1 MA's), (65, 57739), (76, 57805),

Gene: DrHayes_51 Start: 38242, Stop: 38505, Start Num: 25
Candidate Starts for DrHayes_51:
(5, 37990), (Start: 25 @38242 has 113 MA's), (46, 38296), (53, 38365), (58, 38383),

Gene: Dumbo_93 Start: 56054, Stop: 56314, Start Num: 36
Candidate Starts for Dumbo_93:
(Start: 36 @56054 has 116 MA's), (43, 56075), (Start: 51 @56150 has 1 MA's), (65, 56219), (76, 56285),

Gene: Durfee_50 Start: 37668, Stop: 37931, Start Num: 25
Candidate Starts for Durfee_50:
(Start: 25 @37668 has 113 MA's), (58, 37809),

Gene: Dusk_90 Start: 56357, Stop: 56617, Start Num: 36
Candidate Starts for Dusk_90:
(Start: 36 @56357 has 116 MA's), (43, 56378), (Start: 51 @56453 has 1 MA's), (65, 56522), (76, 56588),

Gene: Easy2Say_94 Start: 57556, Stop: 57816, Start Num: 36
Candidate Starts for Easy2Say_94:
(Start: 36 @57556 has 116 MA's), (43, 57577), (Start: 51 @57652 has 1 MA's), (65, 57721), (76, 57787),

Gene: Efra2_53 Start: 37187, Stop: 37450, Start Num: 25
Candidate Starts for Efra2_53:
(Start: 25 @37187 has 113 MA's), (Start: 31 @37199 has 2 MA's), (53, 37310), (58, 37328),

Gene: Ekdilam_50 Start: 37991, Stop: 38245, Start Num: 25
Candidate Starts for Ekdilam_50:
(2, 37673), (5, 37742), (6, 37838), (Start: 25 @37991 has 113 MA's), (58, 38120), (69, 38165),

Gene: Elite2014_92 Start: 56151, Stop: 56411, Start Num: 36

Candidate Starts for Elite2014_92:

(Start: 36 @56151 has 116 MA's), (43, 56172), (Start: 51 @56247 has 1 MA's), (65, 56316), (76, 56382),

Gene: Ellie_49 Start: 37741, Stop: 37995, Start Num: 25

Candidate Starts for Ellie_49:

(6, 37591), (Start: 25 @37741 has 113 MA's), (49, 37807), (69, 37915), (75, 37960),

Gene: Elph10_94 Start: 56144, Stop: 56404, Start Num: 36

Candidate Starts for Elph10_94:

(Start: 36 @56144 has 116 MA's), (43, 56165), (Start: 51 @56240 has 1 MA's), (65, 56309), (76, 56375),

Gene: Emerson_51 Start: 37347, Stop: 37610, Start Num: 25

Candidate Starts for Emerson_51:

(Start: 25 @37347 has 113 MA's), (58, 37488),

Gene: Emmina_93 Start: 55777, Stop: 56037, Start Num: 36

Candidate Starts for Emmina_93:

(Start: 36 @55777 has 116 MA's), (43, 55798), (Start: 51 @55873 has 1 MA's), (65, 55942), (76, 56008),

Gene: Enkosi_48 Start: 39653, Stop: 39922, Start Num: 25

Candidate Starts for Enkosi_48:

(Start: 25 @39653 has 113 MA's), (50, 39749), (61, 39809), (62, 39815), (63, 39818), (71, 39845), (72, 39857), (80, 39911),

Gene: Eureka_92 Start: 57064, Stop: 57324, Start Num: 36

Candidate Starts for Eureka_92:

(Start: 36 @57064 has 116 MA's), (43, 57085), (Start: 51 @57160 has 1 MA's), (65, 57229), (76, 57295),

Gene: Fefferhead_51 Start: 37691, Stop: 37945, Start Num: 25

Candidate Starts for Fefferhead_51:

(6, 37541), (Start: 25 @37691 has 113 MA's), (49, 37757), (69, 37865), (75, 37910),

Gene: Filch_95 Start: 56349, Stop: 56609, Start Num: 36

Candidate Starts for Filch_95:

(Start: 36 @56349 has 116 MA's), (43, 56370), (Start: 51 @56445 has 1 MA's), (65, 56514), (76, 56580),

Gene: FireRed_97 Start: 57367, Stop: 57627, Start Num: 36

Candidate Starts for FireRed_97:

(Start: 36 @57367 has 116 MA's), (43, 57388), (Start: 51 @57463 has 1 MA's), (65, 57532), (76, 57598),

Gene: Flypotenuse_89 Start: 55727, Stop: 55987, Start Num: 36

Candidate Starts for Flypotenuse_89:

(Start: 36 @55727 has 116 MA's), (43, 55748), (Start: 51 @55823 has 1 MA's), (65, 55892), (76, 55958),

Gene: Footloose_55 Start: 31826, Stop: 32083, Start Num: 19

Candidate Starts for Footloose_55:

(Start: 19 @31826 has 2 MA's), (23, 31838),

Gene: Fryberger_93 Start: 47445, Stop: 47750, Start Num: 32

Candidate Starts for Fryberger_93:

(Start: 32 @47445 has 6 MA's), (46, 47478), (77, 47679), (81, 47703),

Gene: Gage_95 Start: 56798, Stop: 57058, Start Num: 36

Candidate Starts for Gage_95:

(Start: 36 @56798 has 116 MA's), (43, 56819), (Start: 51 @56894 has 1 MA's), (65, 56963), (76, 57029),

Gene: Ganymede_51 Start: 37786, Stop: 38049, Start Num: 25

Candidate Starts for Ganymede_51:

(Start: 25 @37786 has 113 MA's), (58, 37927),

Gene: Gator_91 Start: 56582, Stop: 56842, Start Num: 36

Candidate Starts for Gator_91:

(8, 56444), (Start: 36 @56582 has 116 MA's), (43, 56603), (65, 56747), (76, 56813),

Gene: Gemini_98 Start: 57174, Stop: 57434, Start Num: 36

Candidate Starts for Gemini_98:

(Start: 36 @57174 has 116 MA's), (43, 57195), (Start: 51 @57270 has 1 MA's), (65, 57339), (76, 57405),

Gene: Geraldini_53 Start: 38403, Stop: 38666, Start Num: 25

Candidate Starts for Geraldini_53:

(Start: 25 @38403 has 113 MA's), (46, 38457), (47, 38463), (58, 38544),

Gene: Glexan_92 Start: 56857, Stop: 57117, Start Num: 36

Candidate Starts for Glexan_92:

(Start: 36 @56857 has 116 MA's), (43, 56878), (Start: 51 @56953 has 1 MA's), (65, 57022), (76, 57088),

Gene: GodPhather_56 Start: 45795, Stop: 46076, Start Num: 22

Candidate Starts for GodPhather_56:

(Start: 22 @45795 has 8 MA's), (45, 45855), (52, 45912), (68, 45984), (78, 46056),

Gene: Goku_92 Start: 56793, Stop: 57053, Start Num: 36

Candidate Starts for Goku_92:

(Start: 36 @56793 has 116 MA's), (43, 56814), (Start: 51 @56889 has 1 MA's), (65, 56958), (76, 57024),

Gene: GoldenSpark_97 Start: 56657, Stop: 56917, Start Num: 36

Candidate Starts for GoldenSpark_97:

(Start: 36 @56657 has 116 MA's), (43, 56678), (Start: 51 @56753 has 1 MA's), (65, 56822), (76, 56888),

Gene: Goldilocks_96 Start: 56015, Stop: 56275, Start Num: 36

Candidate Starts for Goldilocks_96:

(Start: 36 @56015 has 116 MA's), (43, 56036), (Start: 51 @56111 has 1 MA's), (65, 56180), (76, 56246),

Gene: GooberAzure_96 Start: 56657, Stop: 56917, Start Num: 36

Candidate Starts for GooberAzure_96:

(Start: 36 @56657 has 116 MA's), (43, 56678), (Start: 51 @56753 has 1 MA's), (65, 56822), (76, 56888),

Gene: Guanica15_53 Start: 37156, Stop: 37407, Start Num: 31

Candidate Starts for Guanica15_53:

(Start: 25 @37144 has 113 MA's), (Start: 31 @37156 has 2 MA's), (53, 37267), (58, 37285),

Gene: Guey18_98 Start: 48765, Stop: 49070, Start Num: 32

Candidate Starts for Guey18_98:

(Start: 32 @48765 has 6 MA's), (46, 48798), (77, 48999), (81, 49023),

Gene: Hammy_53 Start: 38432, Stop: 38686, Start Num: 25

Candidate Starts for Hammy_53:

(2, 38114), (5, 38183), (6, 38279), (Start: 25 @38432 has 113 MA's), (49, 38498), (58, 38561), (69, 38606),

Gene: HanKaySha_94 Start: 56224, Stop: 56484, Start Num: 36

Candidate Starts for HanKaySha_94:

(Start: 36 @56224 has 116 MA's), (43, 56245), (Start: 51 @56320 has 1 MA's), (65, 56389), (76, 56455),

Gene: Harella_93 Start: 57373, Stop: 57633, Start Num: 36

Candidate Starts for Harella_93:

(Start: 36 @57373 has 116 MA's), (43, 57394), (Start: 51 @57469 has 1 MA's), (65, 57538), (76, 57604),

Gene: HedwigODU_50 Start: 37356, Stop: 37619, Start Num: 25

Candidate Starts for HedwigODU_50:

(Start: 25 @37356 has 113 MA's), (58, 37497),

Gene: Henry_91 Start: 56534, Stop: 56794, Start Num: 36

Candidate Starts for Henry_91:

(Start: 36 @56534 has 116 MA's), (43, 56555), (Start: 51 @56630 has 1 MA's), (65, 56699), (76, 56765),

Gene: Highbury_92 Start: 56224, Stop: 56484, Start Num: 36

Candidate Starts for Highbury_92:

(Start: 36 @56224 has 116 MA's), (43, 56245), (Start: 51 @56320 has 1 MA's), (65, 56389), (76, 56455),

Gene: Holt_98 Start: 57071, Stop: 57331, Start Num: 36

Candidate Starts for Holt_98:

(Start: 36 @57071 has 116 MA's), (43, 57092), (Start: 51 @57167 has 1 MA's), (65, 57236), (76, 57302),

Gene: Homura_50 Start: 37471, Stop: 37734, Start Num: 25

Candidate Starts for Homura_50:

(Start: 25 @37471 has 113 MA's), (58, 37612),

Gene: Hoonter_96 Start: 56529, Stop: 56789, Start Num: 36

Candidate Starts for Hoonter_96:

(Start: 36 @56529 has 116 MA's), (43, 56550), (Start: 51 @56625 has 1 MA's), (65, 56694), (76, 56760),

Gene: Hopey_94 Start: 57035, Stop: 57295, Start Num: 36

Candidate Starts for Hopey_94:

(Start: 36 @57035 has 116 MA's), (43, 57056), (Start: 51 @57131 has 1 MA's), (65, 57200), (76, 57266),

Gene: HufflyPuff_95 Start: 57119, Stop: 57379, Start Num: 36

Candidate Starts for HufflyPuff_95:

(Start: 36 @57119 has 116 MA's), (43, 57140), (Start: 51 @57215 has 1 MA's), (65, 57284), (76, 57350),

Gene: Hurricane_53 Start: 37919, Stop: 38188, Start Num: 21

Candidate Starts for Hurricane_53:

(5, 37679), (11, 37823), (Start: 21 @37919 has 7 MA's), (34, 37943), (58, 38063), (71, 38117),

Gene: Hyperbowlee_50 Start: 37668, Stop: 37931, Start Num: 25

Candidate Starts for Hyperbowlee_50:

(Start: 25 @37668 has 113 MA's), (58, 37809),

Gene: IHOP_91 Start: 56697, Stop: 56957, Start Num: 36

Candidate Starts for IHOP_91:

(Start: 36 @56697 has 116 MA's), (43, 56718), (Start: 51 @56793 has 1 MA's), (65, 56862), (76, 56928),

Gene: Ibrahim_41 Start: 31892, Stop: 32149, Start Num: 20

Candidate Starts for Ibrahim_41:

(3, 31616), (4, 31637), (Start: 20 @31892 has 7 MA's), (49, 31976), (63, 32066),

Gene: Icee_94 Start: 56184, Stop: 56444, Start Num: 36

Candidate Starts for Icee_94:

(Start: 36 @56184 has 116 MA's), (43, 56205), (Start: 51 @56280 has 1 MA's), (65, 56349), (76, 56415),

Gene: Illumine_53 Start: 38105, Stop: 38368, Start Num: 25

Candidate Starts for Illumine_53:

(5, 37853), (Start: 25 @38105 has 113 MA's), (46, 38159), (58, 38246),

Gene: Inca_90 Start: 55186, Stop: 55446, Start Num: 36

Candidate Starts for Inca_90:

(Start: 36 @55186 has 116 MA's), (43, 55207), (Start: 51 @55282 has 1 MA's), (65, 55351), (76, 55417),

Gene: Inky_50 Start: 37471, Stop: 37734, Start Num: 25

Candidate Starts for Inky_50:

(Start: 25 @37471 has 113 MA's), (58, 37612),

Gene: JAWS_50 Start: 37345, Stop: 37608, Start Num: 25

Candidate Starts for JAWS_50:

(Start: 25 @37345 has 113 MA's), (58, 37486),

Gene: Jarvi_50 Start: 37471, Stop: 37734, Start Num: 25

Candidate Starts for Jarvi_50:
(Start: 25 @37471 has 113 MA's), (58, 37612),

Gene: Jayhawk_51 Start: 37354, Stop: 37617, Start Num: 25
Candidate Starts for Jayhawk_51:
(Start: 25 @37354 has 113 MA's), (58, 37495),

Gene: JeTaime_94 Start: 57387, Stop: 57647, Start Num: 36
Candidate Starts for JeTaime_94:
(Start: 36 @57387 has 116 MA's), (43, 57408), (Start: 51 @57483 has 1 MA's), (65, 57552), (76, 57618),

Gene: Jeckyll_50 Start: 37471, Stop: 37734, Start Num: 25
Candidate Starts for Jeckyll_50:
(Start: 25 @37471 has 113 MA's), (58, 37612),

Gene: Jeon_55 Start: 45537, Stop: 45818, Start Num: 22
Candidate Starts for Jeon_55:
(Start: 22 @45537 has 8 MA's), (45, 45597), (52, 45654), (68, 45726), (78, 45798),

Gene: Journey_46 Start: 30286, Stop: 30516, Start Num: 44
Candidate Starts for Journey_46:
(Start: 18 @30217 has 4 MA's), (23, 30235), (Start: 39 @30271 has 1 MA's), (Start: 44 @30286 has 1 MA's), (58, 30382), (70, 30433), (74, 30469), (79, 30502), (82, 30508),

Gene: Joy99_50 Start: 37400, Stop: 37663, Start Num: 25
Candidate Starts for Joy99_50:
(Start: 25 @37400 has 113 MA's), (58, 37541),

Gene: Kanye_90 Start: 56281, Stop: 56541, Start Num: 36
Candidate Starts for Kanye_90:
(Start: 36 @56281 has 116 MA's), (43, 56302), (Start: 51 @56377 has 1 MA's), (65, 56446), (76, 56512),

Gene: Keshu_55 Start: 37986, Stop: 38255, Start Num: 21
Candidate Starts for Keshu_55:
(5, 37746), (Start: 21 @37986 has 7 MA's), (34, 38010), (58, 38130), (71, 38184),

Gene: Kimchi_97 Start: 56801, Stop: 57061, Start Num: 36
Candidate Starts for Kimchi_97:
(Start: 36 @56801 has 116 MA's), (43, 56822), (Start: 51 @56897 has 1 MA's), (65, 56966), (76, 57032),

Gene: Kostya_93 Start: 56799, Stop: 57059, Start Num: 36
Candidate Starts for Kostya_93:
(Start: 36 @56799 has 116 MA's), (43, 56820), (Start: 51 @56895 has 1 MA's), (65, 56964), (76, 57030),

Gene: Krueger_57 Start: 38145, Stop: 38396, Start Num: 25
Candidate Starts for Krueger_57:
(Start: 25 @38145 has 113 MA's), (28, 38151), (53, 38265), (55, 38271), (58, 38283),

Gene: LastHope_53 Start: 36640, Stop: 36891, Start Num: 31

Candidate Starts for LastHope_53:

(Start: 25 @36628 has 113 MA's), (Start: 31 @36640 has 2 MA's), (46, 36682), (53, 36751), (58, 36769),

Gene: LaterM_51 Start: 38233, Stop: 38496, Start Num: 25

Candidate Starts for LaterM_51:

(Start: 25 @38233 has 113 MA's), (46, 38287), (58, 38374),

Gene: LilPharaoh_46 Start: 36768, Stop: 37037, Start Num: 25

Candidate Starts for LilPharaoh_46:

(Start: 25 @36768 has 113 MA's), (50, 36864), (61, 36924), (62, 36930), (63, 36933), (71, 36960), (72, 36972), (80, 37026),

Gene: Lilac_96 Start: 56626, Stop: 56886, Start Num: 36

Candidate Starts for Lilac_96:

(Start: 36 @56626 has 116 MA's), (43, 56647), (Start: 51 @56722 has 1 MA's), (65, 56791), (76, 56857),

Gene: Lilizi_94 Start: 56263, Stop: 56523, Start Num: 36

Candidate Starts for Lilizi_94:

(Start: 36 @56263 has 116 MA's), (43, 56284), (Start: 51 @56359 has 1 MA's), (65, 56428), (76, 56494),

Gene: Lilpickle_92 Start: 56151, Stop: 56411, Start Num: 36

Candidate Starts for Lilpickle_92:

(Start: 36 @56151 has 116 MA's), (43, 56172), (Start: 51 @56247 has 1 MA's), (65, 56316), (76, 56382),

Gene: LindNT_49 Start: 37556, Stop: 37819, Start Num: 25

Candidate Starts for LindNT_49:

(Start: 25 @37556 has 113 MA's), (46, 37610), (58, 37697),

Gene: Llorens_50 Start: 37471, Stop: 37734, Start Num: 25

Candidate Starts for Llorens_50:

(Start: 25 @37471 has 113 MA's), (58, 37612),

Gene: Lunahalos_50 Start: 37471, Stop: 37734, Start Num: 25

Candidate Starts for Lunahalos_50:

(Start: 25 @37471 has 113 MA's), (58, 37612),

Gene: MISSy_94 Start: 56379, Stop: 56639, Start Num: 36

Candidate Starts for MISSy_94:

(Start: 36 @56379 has 116 MA's), (43, 56400), (Start: 51 @56475 has 1 MA's), (65, 56544), (76, 56610),

Gene: MPhalcon_94 Start: 56372, Stop: 56632, Start Num: 36

Candidate Starts for MPhalcon_94:

(Start: 36 @56372 has 116 MA's), (43, 56393), (Start: 51 @56468 has 1 MA's), (65, 56537), (76, 56603),

Gene: MacnCheese_55 Start: 38928, Stop: 39194, Start Num: 21

Candidate Starts for MacnCheese_55:

(5, 38688), (Start: 21 @38928 has 7 MA's), (34, 38949), (38, 38955), (58, 39069), (69, 39114), (71, 39123),

Gene: MadamMonkfish_93 Start: 55878, Stop: 56138, Start Num: 36

Candidate Starts for MadamMonkfish_93:

(Start: 36 @55878 has 116 MA's), (43, 55899), (Start: 51 @55974 has 1 MA's), (65, 56043), (76, 56109),

Gene: Manda_95 Start: 57955, Stop: 58215, Start Num: 36

Candidate Starts for Manda_95:

(Start: 36 @57955 has 116 MA's), (43, 57976), (Start: 51 @58051 has 1 MA's), (65, 58120), (76, 58186),

Gene: Marshawn_53 Start: 38262, Stop: 38522, Start Num: 25

Candidate Starts for Marshawn_53:

(2, 37941), (5, 38010), (6, 38106), (Start: 25 @38262 has 113 MA's), (47, 38319), (63, 38427), (75, 38490),

Gene: Marshmallow_91 Start: 57427, Stop: 57687, Start Num: 36

Candidate Starts for Marshmallow_91:

(Start: 36 @57427 has 116 MA's), (43, 57448), (Start: 51 @57523 has 1 MA's), (65, 57592), (76, 57658),

Gene: Maxxinista_96 Start: 56793, Stop: 57053, Start Num: 36

Candidate Starts for Maxxinista_96:

(Start: 36 @56793 has 116 MA's), (43, 56814), (Start: 51 @56889 has 1 MA's), (65, 56958), (76, 57024),

Gene: Mdavu_47 Start: 37029, Stop: 37298, Start Num: 25

Candidate Starts for Mdavu_47:

(Start: 25 @37029 has 113 MA's), (50, 37125), (61, 37185), (62, 37191), (63, 37194), (71, 37221), (72, 37233), (80, 37287),

Gene: MeaningOfLife_51 Start: 38280, Stop: 38543, Start Num: 25

Candidate Starts for MeaningOfLife_51:

(Start: 25 @38280 has 113 MA's), (58, 38421),

Gene: Megabear_55 Start: 44928, Stop: 45209, Start Num: 22

Candidate Starts for Megabear_55:

(Start: 22 @44928 has 8 MA's), (45, 44988), (52, 45045), (68, 45117), (78, 45189),

Gene: Megsy_52 Start: 37615, Stop: 37878, Start Num: 25

Candidate Starts for Megsy_52:

(Start: 25 @37615 has 113 MA's), (46, 37669), (58, 37756),

Gene: Mendokysei_39 Start: 30983, Stop: 31297, Start Num: 20

Candidate Starts for Mendokysei_39:

(Start: 20 @30983 has 7 MA's), (30, 30998), (46, 31037),

Gene: Mindy_92 Start: 55700, Stop: 55960, Start Num: 36

Candidate Starts for Mindy_92:

(Start: 36 @55700 has 116 MA's), (43, 55721), (Start: 51 @55796 has 1 MA's), (65, 55865), (76, 55931),

Gene: Miniwave_88 Start: 56195, Stop: 56455, Start Num: 36

Candidate Starts for Miniwave_88:

(Start: 36 @56195 has 116 MA's), (43, 56216), (Start: 51 @56291 has 1 MA's), (65, 56360), (76, 56426),

Gene: Misfit_94 Start: 57669, Stop: 57929, Start Num: 36

Candidate Starts for Misfit_94:

(Start: 36 @57669 has 116 MA's), (43, 57690), (Start: 51 @57765 has 1 MA's), (65, 57834), (76, 57900),

Gene: Moldemort_96 Start: 56336, Stop: 56596, Start Num: 36

Candidate Starts for Moldemort_96:

(Start: 36 @56336 has 116 MA's), (43, 56357), (Start: 51 @56432 has 1 MA's), (65, 56501), (76, 56567),

Gene: Mosby_89 Start: 55952, Stop: 56212, Start Num: 36

Candidate Starts for Mosby_89:

(Start: 36 @55952 has 116 MA's), (43, 55973), (Start: 51 @56048 has 1 MA's), (65, 56117), (76, 56183),

Gene: Mufasa_54 Start: 39116, Stop: 39349, Start Num: 33

Candidate Starts for Mufasa_54:

(Start: 32 @39113 has 6 MA's), (Start: 33 @39116 has 1 MA's), (37, 39122), (Start: 39 @39128 has 1 MA's), (53, 39218), (55, 39224), (71, 39287), (79, 39338),

Gene: Murica_96 Start: 57595, Stop: 57855, Start Num: 36

Candidate Starts for Murica_96:

(Start: 36 @57595 has 116 MA's), (43, 57616), (Start: 51 @57691 has 1 MA's), (65, 57760), (76, 57826),

Gene: Murphy_93 Start: 57036, Stop: 57296, Start Num: 36

Candidate Starts for Murphy_93:

(Start: 36 @57036 has 116 MA's), (43, 57057), (Start: 51 @57132 has 1 MA's), (65, 57201), (76, 57267),

Gene: Murucutumbu_51 Start: 38326, Stop: 38589, Start Num: 25

Candidate Starts for Murucutumbu_51:

(5, 38074), (Start: 25 @38326 has 113 MA's), (46, 38380), (58, 38467),

Gene: Mynx_51 Start: 37672, Stop: 37935, Start Num: 25

Candidate Starts for Mynx_51:

(Start: 25 @37672 has 113 MA's), (58, 37813),

Gene: Myrale_93 Start: 57158, Stop: 57418, Start Num: 36

Candidate Starts for Myrale_93:

(Start: 36 @57158 has 116 MA's), (43, 57179), (Start: 51 @57254 has 1 MA's), (65, 57323), (76, 57389),

Gene: Nairb_40 Start: 31446, Stop: 31703, Start Num: 20

Candidate Starts for Nairb_40:

(3, 31170), (4, 31191), (Start: 20 @31446 has 7 MA's), (49, 31530), (63, 31620),

Gene: Nala_95 Start: 56881, Stop: 57141, Start Num: 36
Candidate Starts for Nala_95:
(Start: 36 @56881 has 116 MA's), (43, 56902), (Start: 51 @56977 has 1 MA's), (65, 57046), (76, 57112),

Gene: NelitzaMV_91 Start: 56241, Stop: 56501, Start Num: 36
Candidate Starts for NelitzaMV_91:
(Start: 36 @56241 has 116 MA's), (43, 56262), (Start: 51 @56337 has 1 MA's), (65, 56406), (76, 56472),

Gene: Nergal_48 Start: 36024, Stop: 36272, Start Num: 25
Candidate Starts for Nergal_48:
(Start: 25 @36024 has 113 MA's), (53, 36138), (58, 36156), (65, 36189), (75, 36246),

Gene: Nibb_53 Start: 37813, Stop: 38082, Start Num: 25
Candidate Starts for Nibb_53:
(Start: 25 @37813 has 113 MA's), (41, 37840), (69, 37987), (85, 38071),

Gene: Nikao_49 Start: 39653, Stop: 39922, Start Num: 25
Candidate Starts for Nikao_49:
(Start: 25 @39653 has 113 MA's), (50, 39749), (61, 39809), (62, 39815), (63, 39818), (71, 39845), (72, 39857), (80, 39911),

Gene: Niklas_53 Start: 38346, Stop: 38609, Start Num: 25
Candidate Starts for Niklas_53:
(1, 37866), (2, 38022), (5, 38091), (Start: 25 @38346 has 113 MA's), (Start: 51 @38448 has 1 MA's), (53, 38466), (58, 38484), (71, 38538), (75, 38574), (80, 38598),

Gene: Nimrod_94 Start: 57584, Stop: 57844, Start Num: 36
Candidate Starts for Nimrod_94:
(Start: 36 @57584 has 116 MA's), (43, 57605), (Start: 51 @57680 has 1 MA's), (65, 57749), (76, 57815),

Gene: NoSleep_94 Start: 56218, Stop: 56478, Start Num: 36
Candidate Starts for NoSleep_94:
(Start: 36 @56218 has 116 MA's), (43, 56239), (Start: 51 @56314 has 1 MA's), (65, 56383), (76, 56449),

Gene: Nutello_46 Start: 37040, Stop: 37309, Start Num: 25
Candidate Starts for Nutello_46:
(Start: 25 @37040 has 113 MA's), (50, 37136), (61, 37196), (62, 37202), (63, 37205), (71, 37232), (72, 37244), (80, 37298),

Gene: OrionPax_92 Start: 55969, Stop: 56229, Start Num: 36
Candidate Starts for OrionPax_92:
(Start: 36 @55969 has 116 MA's), (43, 55990), (Start: 51 @56065 has 1 MA's), (65, 56134), (76, 56200),

Gene: PR_55 Start: 45532, Stop: 45813, Start Num: 22
Candidate Starts for PR_55:
(Start: 22 @45532 has 8 MA's), (45, 45592), (52, 45649), (68, 45721), (78, 45793),

Gene: Padfoot_50 Start: 37668, Stop: 37931, Start Num: 25

Candidate Starts for Padfoot_50:
(Start: 25 @37668 has 113 MA's), (58, 37809),

Gene: Padpat_52 Start: 37347, Stop: 37610, Start Num: 25
Candidate Starts for Padpat_52:
(Start: 25 @37347 has 113 MA's), (58, 37488),

Gene: Paperbeatsrock_92 Start: 56873, Stop: 57133, Start Num: 36
Candidate Starts for Paperbeatsrock_92:
(Start: 36 @56873 has 116 MA's), (43, 56894), (Start: 51 @56969 has 1 MA's), (65, 57038), (76, 57104),

Gene: Pat3_90 Start: 55071, Stop: 55331, Start Num: 36
Candidate Starts for Pat3_90:
(8, 54933), (Start: 36 @55071 has 116 MA's), (43, 55092), (65, 55236), (76, 55302),

Gene: Peanam_53 Start: 38304, Stop: 38567, Start Num: 25
Candidate Starts for Peanam_53:
(1, 37824), (2, 37980), (5, 38049), (Start: 25 @38304 has 113 MA's), (Start: 51 @38406 has 1 MA's), (53, 38424), (58, 38442), (71, 38496), (75, 38532), (80, 38556),

Gene: Peel_50 Start: 37473, Stop: 37736, Start Num: 25
Candidate Starts for Peel_50:
(Start: 25 @37473 has 113 MA's), (58, 37614),

Gene: Petra64142_98 Start: 58076, Stop: 58336, Start Num: 36
Candidate Starts for Petra64142_98:
(8, 57938), (Start: 36 @58076 has 116 MA's), (43, 58097), (65, 58241), (76, 58307),

Gene: Phaja_91 Start: 56699, Stop: 56959, Start Num: 36
Candidate Starts for Phaja_91:
(Start: 36 @56699 has 116 MA's), (43, 56720), (Start: 51 @56795 has 1 MA's), (65, 56864), (76, 56930),

Gene: Pharb_50 Start: 36682, Stop: 36942, Start Num: 21
Candidate Starts for Pharb_50:
(1, 36217), (5, 36442), (Start: 21 @36682 has 7 MA's), (34, 36697), (71, 36871),

Gene: Pharsalus_90 Start: 56673, Stop: 56933, Start Num: 36
Candidate Starts for Pharsalus_90:
(Start: 36 @56673 has 116 MA's), (43, 56694), (Start: 51 @56769 has 1 MA's), (65, 56838), (76, 56904),

Gene: PhatBacter_97 Start: 57367, Stop: 57627, Start Num: 36
Candidate Starts for PhatBacter_97:
(Start: 36 @57367 has 116 MA's), (43, 57388), (Start: 51 @57463 has 1 MA's), (65, 57532), (76, 57598),

Gene: Phaux_96 Start: 57909, Stop: 58169, Start Num: 36
Candidate Starts for Phaux_96:
(Start: 36 @57909 has 116 MA's), (43, 57930), (Start: 51 @58005 has 1 MA's), (65, 58074), (76, 58140),

Gene: PhelpsODU_53 Start: 37175, Stop: 37432, Start Num: 25

Candidate Starts for PhelpsODU_53:

(Start: 25 @37175 has 113 MA's), (Start: 36 @37196 has 116 MA's), (49, 37250), (58, 37313), (59, 37322), (75, 37400),

Gene: Phrank_54 Start: 37132, Stop: 37389, Start Num: 25

Candidate Starts for Phrank_54:

(Start: 25 @37132 has 113 MA's), (Start: 36 @37153 has 116 MA's), (49, 37207), (58, 37270), (59, 37279), (75, 37357),

Gene: Phrux_91 Start: 56185, Stop: 56445, Start Num: 36

Candidate Starts for Phrux_91:

(Start: 36 @56185 has 116 MA's), (43, 56206), (Start: 51 @56281 has 1 MA's), (65, 56350), (76, 56416),

Gene: Piatt_50 Start: 37668, Stop: 37931, Start Num: 25

Candidate Starts for Piatt_50:

(Start: 25 @37668 has 113 MA's), (58, 37809),

Gene: Pixie_52 Start: 37451, Stop: 37720, Start Num: 21

Candidate Starts for Pixie_52:

(5, 37211), (Start: 21 @37451 has 7 MA's), (34, 37475), (58, 37595), (71, 37649),

Gene: Pokerus_49 Start: 37394, Stop: 37657, Start Num: 25

Candidate Starts for Pokerus_49:

(Start: 25 @37394 has 113 MA's), (46, 37448), (58, 37535),

Gene: Porky_92 Start: 55785, Stop: 56045, Start Num: 36

Candidate Starts for Porky_92:

(Start: 36 @55785 has 116 MA's), (43, 55806), (Start: 51 @55881 has 1 MA's), (65, 55950), (76, 56016),

Gene: Prithvi_51 Start: 37556, Stop: 37819, Start Num: 25

Candidate Starts for Prithvi_51:

(Start: 25 @37556 has 113 MA's), (46, 37610), (58, 37697),

Gene: Pumpkin_97 Start: 57561, Stop: 57821, Start Num: 36

Candidate Starts for Pumpkin_97:

(Start: 36 @57561 has 116 MA's), (43, 57582), (Start: 51 @57657 has 1 MA's), (65, 57726), (76, 57792),

Gene: Pupper_53 Start: 18336, Stop: 18617, Start Num: 14

Candidate Starts for Pupper_53:

(Start: 14 @18336 has 2 MA's), (24, 18372), (49, 18447),

Gene: Quallification_94 Start: 57281, Stop: 57541, Start Num: 36

Candidate Starts for Quallification_94:

(Start: 36 @57281 has 116 MA's), (43, 57302), (Start: 51 @57377 has 1 MA's), (65, 57446), (76, 57512),

Gene: QuincyRose_49 Start: 37786, Stop: 38049, Start Num: 25

Candidate Starts for QuincyRose_49:

(Start: 25 @37786 has 113 MA's), (58, 37927),

Gene: Rakim_94 Start: 56610, Stop: 56870, Start Num: 36
Candidate Starts for Rakim_94:
(Start: 36 @56610 has 116 MA's), (43, 56631), (Start: 51 @56706 has 1 MA's), (65, 56775), (76, 56841),

Gene: Ramen_51 Start: 37358, Stop: 37621, Start Num: 25
Candidate Starts for Ramen_51:
(Start: 25 @37358 has 113 MA's), (58, 37499),

Gene: Rapunzel97_51 Start: 37354, Stop: 37617, Start Num: 25
Candidate Starts for Rapunzel97_51:
(Start: 25 @37354 has 113 MA's), (58, 37495),

Gene: Rimmer_91 Start: 56182, Stop: 56442, Start Num: 36
Candidate Starts for Rimmer_91:
(8, 56044), (Start: 36 @56182 has 116 MA's), (43, 56203), (65, 56347), (76, 56413),

Gene: RiverMonster_94 Start: 57081, Stop: 57341, Start Num: 36
Candidate Starts for RiverMonster_94:
(Start: 36 @57081 has 116 MA's), (43, 57102), (Start: 51 @57177 has 1 MA's), (65, 57246), (76, 57312),

Gene: RobinSparkles_47 Start: 44442, Stop: 44158, Start Num: 35
Candidate Starts for RobinSparkles_47:
(Start: 35 @44442 has 1 MA's), (67, 44256),

Gene: RonRayGun_41 Start: 31892, Stop: 32149, Start Num: 20
Candidate Starts for RonRayGun_41:
(3, 31616), (4, 31637), (Start: 20 @31892 has 7 MA's), (49, 31976), (63, 32066),

Gene: Ronaldo_96 Start: 48347, Stop: 48652, Start Num: 32
Candidate Starts for Ronaldo_96:
(Start: 32 @48347 has 6 MA's), (46, 48380), (77, 48581), (81, 48605),

Gene: Rosmarinus_50 Start: 37459, Stop: 37722, Start Num: 25
Candidate Starts for Rosmarinus_50:
(Start: 25 @37459 has 113 MA's), (58, 37600),

Gene: SCentae_53 Start: 18353, Stop: 18634, Start Num: 14
Candidate Starts for SCentae_53:
(Start: 14 @18353 has 2 MA's), (24, 18389), (49, 18464),

Gene: Saints25_92 Start: 56224, Stop: 56484, Start Num: 36
Candidate Starts for Saints25_92:
(Start: 36 @56224 has 116 MA's), (43, 56245), (Start: 51 @56320 has 1 MA's), (65, 56389), (76, 56455),

Gene: SamuelLPlaqson_51 Start: 38242, Stop: 38505, Start Num: 25
Candidate Starts for SamuelLPlaqson_51:
(5, 37990), (Start: 25 @38242 has 113 MA's), (46, 38296), (53, 38365), (58, 38383),

Gene: Sassay_88 Start: 54914, Stop: 55174, Start Num: 36

Candidate Starts for Sassay_88:

(Start: 36 @54914 has 116 MA's), (43, 54935), (Start: 51 @55010 has 1 MA's), (65, 55079), (76, 55145),

Gene: Sbash_53 Start: 39707, Stop: 40006, Start Num: 18

Candidate Starts for Sbash_53:

(Start: 18 @39707 has 4 MA's), (23, 39725), (Start: 39 @39761 has 1 MA's), (Start: 44 @39776 has 1 MA's), (58, 39872), (70, 39923), (74, 39959), (82, 39998),

Gene: Sejanus_58 Start: 47696, Stop: 47995, Start Num: 18

Candidate Starts for Sejanus_58:

(Start: 18 @47696 has 4 MA's), (23, 47714), (Start: 39 @47750 has 1 MA's), (Start: 44 @47765 has 1 MA's), (58, 47861), (70, 47912), (74, 47948), (79, 47981), (82, 47987),

Gene: SgtBeansprout_46 Start: 37040, Stop: 37309, Start Num: 25

Candidate Starts for SgtBeansprout_46:

(Start: 25 @37040 has 113 MA's), (50, 37136), (61, 37196), (62, 37202), (63, 37205), (71, 37232), (72, 37244), (80, 37298),

Gene: Shadow1_56 Start: 38290, Stop: 38541, Start Num: 25

Candidate Starts for Shadow1_56:

(Start: 25 @38290 has 113 MA's), (28, 38296), (58, 38428),

Gene: ShamWow_93 Start: 57094, Stop: 57354, Start Num: 36

Candidate Starts for ShamWow_93:

(Start: 36 @57094 has 116 MA's), (43, 57115), (Start: 51 @57190 has 1 MA's), (65, 57259), (76, 57325),

Gene: Shaobing_53 Start: 38322, Stop: 38585, Start Num: 25

Candidate Starts for Shaobing_53:

(1, 37842), (2, 37998), (5, 38067), (Start: 25 @38322 has 113 MA's), (Start: 51 @38424 has 1 MA's), (53, 38442), (58, 38460), (71, 38514), (75, 38550), (80, 38574),

Gene: ShedlockHolmes_54 Start: 37976, Stop: 38245, Start Num: 21

Candidate Starts for ShedlockHolmes_54:

(5, 37736), (Start: 21 @37976 has 7 MA's), (34, 38000), (58, 38120), (71, 38174),

Gene: ShereKhan_91 Start: 57206, Stop: 57466, Start Num: 36

Candidate Starts for ShereKhan_91:

(Start: 36 @57206 has 116 MA's), (43, 57227), (Start: 51 @57302 has 1 MA's), (65, 57371), (76, 57437),

Gene: ShiaSurprise_51 Start: 37668, Stop: 37931, Start Num: 25

Candidate Starts for ShiaSurprise_51:

(Start: 25 @37668 has 113 MA's), (58, 37809),

Gene: Shweta_42 Start: 30626, Stop: 30925, Start Num: 18

Candidate Starts for Shweta_42:

(Start: 18 @30626 has 4 MA's), (23, 30644), (Start: 39 @30680 has 1 MA's), (Start: 44 @30695 has 1 MA's), (58, 30791), (70, 30842), (74, 30878), (79, 30911),

Gene: Simpliphy_92 Start: 56214, Stop: 56474, Start Num: 36

Candidate Starts for Simpliphy_92:

(Start: 36 @56214 has 116 MA's), (43, 56235), (Start: 51 @56310 has 1 MA's), (65, 56379), (76, 56445),

Gene: SirDuracell_93 Start: 55587, Stop: 55847, Start Num: 36

Candidate Starts for SirDuracell_93:

(Start: 36 @55587 has 116 MA's), (43, 55608), (Start: 51 @55683 has 1 MA's), (65, 55752), (76, 55818),

Gene: SirPhilip_53 Start: 38679, Stop: 38936, Start Num: 25

Candidate Starts for SirPhilip_53:

(Start: 25 @38679 has 113 MA's), (53, 38799), (57, 38808), (58, 38817), (72, 38880), (75, 38904),

Gene: SkinnyPete_42 Start: 29948, Stop: 30178, Start Num: 44

Candidate Starts for SkinnyPete_42:

(Start: 18 @29879 has 4 MA's), (23, 29897), (Start: 39 @29933 has 1 MA's), (Start: 44 @29948 has 1 MA's), (58, 30044), (70, 30095), (74, 30131), (79, 30164), (82, 30170),

Gene: Slimphazie_50 Start: 37354, Stop: 37617, Start Num: 25

Candidate Starts for Slimphazie_50:

(Start: 25 @37354 has 113 MA's), (58, 37495),

Gene: SophKB_90 Start: 55892, Stop: 56152, Start Num: 36

Candidate Starts for SophKB_90:

(Start: 36 @55892 has 116 MA's), (43, 55913), (Start: 51 @55988 has 1 MA's), (65, 56057), (76, 56123),

Gene: Sotrice96_94 Start: 56480, Stop: 56740, Start Num: 36

Candidate Starts for Sotrice96_94:

(Start: 36 @56480 has 116 MA's), (43, 56501), (Start: 51 @56576 has 1 MA's), (65, 56645), (76, 56711),

Gene: Spock_50 Start: 37472, Stop: 37735, Start Num: 25

Candidate Starts for Spock_50:

(Start: 25 @37472 has 113 MA's), (58, 37613),

Gene: Squiddly_71 Start: 45719, Stop: 45979, Start Num: 20

Candidate Starts for Squiddly_71:

(12, 45680), (Start: 20 @45719 has 7 MA's), (46, 45782), (48, 45794), (53, 45851), (63, 45896), (80, 45971),

Gene: Stank_96 Start: 56873, Stop: 57133, Start Num: 36

Candidate Starts for Stank_96:

(Start: 36 @56873 has 116 MA's), (43, 56894), (Start: 51 @56969 has 1 MA's), (65, 57038), (76, 57104),

Gene: Stark_95 Start: 56964, Stop: 57224, Start Num: 36

Candidate Starts for Stark_95:

(Start: 36 @56964 has 116 MA's), (43, 56985), (Start: 51 @57060 has 1 MA's), (65, 57129), (76, 57195),

Gene: StellaBean_89 Start: 56418, Stop: 56678, Start Num: 36

Candidate Starts for StellaBean_89:

(Start: 36 @56418 has 116 MA's), (43, 56439), (Start: 51 @56514 has 1 MA's), (65, 56583), (76, 56649),

Gene: Stinson_51 Start: 37846, Stop: 38109, Start Num: 25

Candidate Starts for Stinson_51:

(5, 37594), (Start: 25 @37846 has 113 MA's), (46, 37900), (58, 37987),

Gene: StolenFromERC_96 Start: 56798, Stop: 57058, Start Num: 36

Candidate Starts for StolenFromERC_96:

(Start: 36 @56798 has 116 MA's), (43, 56819), (Start: 51 @56894 has 1 MA's), (65, 56963), (76, 57029),

Gene: Sulley_50 Start: 37598, Stop: 37861, Start Num: 25

Candidate Starts for Sulley_50:

(Start: 25 @37598 has 113 MA's), (58, 37739),

Gene: Sunflower1121_57 Start: 38391, Stop: 38642, Start Num: 25

Candidate Starts for Sunflower1121_57:

(Start: 25 @38391 has 113 MA's), (28, 38397), (58, 38529),

Gene: Syra333_56 Start: 38055, Stop: 38306, Start Num: 25

Candidate Starts for Syra333_56:

(Start: 25 @38055 has 113 MA's), (28, 38061), (55, 38181), (58, 38193),

Gene: TBond007_51 Start: 37450, Stop: 37719, Start Num: 21

Candidate Starts for TBond007_51:

(5, 37210), (Start: 21 @37450 has 7 MA's), (34, 37474), (58, 37594), (71, 37648),

Gene: TBrady12_96 Start: 56634, Stop: 56894, Start Num: 36

Candidate Starts for TBrady12_96:

(Start: 36 @56634 has 116 MA's), (43, 56655), (Start: 51 @56730 has 1 MA's), (65, 56799), (76, 56865),

Gene: TClif_55 Start: 38425, Stop: 38685, Start Num: 25

Candidate Starts for TClif_55:

(Start: 25 @38425 has 113 MA's), (46, 38467), (63, 38581), (69, 38599), (80, 38674),

Gene: Tachez_50 Start: 37316, Stop: 37579, Start Num: 25

Candidate Starts for Tachez_50:

(Start: 25 @37316 has 113 MA's), (58, 37457),

Gene: TaiwanKao_52 Start: 37612, Stop: 37875, Start Num: 25

Candidate Starts for TaiwanKao_52:

(Start: 25 @37612 has 113 MA's), (58, 37753),

Gene: Taj_63 Start: 41748, Stop: 41978, Start Num: 39

Candidate Starts for Taj_63:

(Start: 39 @41748 has 1 MA's), (42, 41757), (60, 41871), (63, 41883), (71, 41907), (72, 41919), (84, 41970),

Gene: Taptic_55 Start: 44928, Stop: 45209, Start Num: 22

Candidate Starts for Taptic_55:

(Start: 22 @44928 has 8 MA's), (45, 44988), (52, 45045), (68, 45117), (78, 45189),

Gene: Tarkin_92 Start: 56882, Stop: 57142, Start Num: 36

Candidate Starts for Tarkin_92:

(Start: 36 @56882 has 116 MA's), (43, 56903), (Start: 51 @56978 has 1 MA's), (65, 57047), (76, 57113),

Gene: TeardropMSU_89 Start: 55882, Stop: 56142, Start Num: 36

Candidate Starts for TeardropMSU_89:

(Start: 36 @55882 has 116 MA's), (43, 55903), (Start: 51 @55978 has 1 MA's), (65, 56047), (76, 56113),

Gene: Teaspoon_90 Start: 56734, Stop: 56994, Start Num: 36

Candidate Starts for Teaspoon_90:

(Start: 36 @56734 has 116 MA's), (43, 56755), (Start: 51 @56830 has 1 MA's), (65, 56899), (76, 56965),

Gene: Terminus_96 Start: 57669, Stop: 57929, Start Num: 36

Candidate Starts for Terminus_96:

(Start: 36 @57669 has 116 MA's), (43, 57690), (Start: 51 @57765 has 1 MA's), (65, 57834), (76, 57900),

Gene: Thresher_96 Start: 57744, Stop: 58004, Start Num: 36

Candidate Starts for Thresher_96:

(Start: 36 @57744 has 116 MA's), (43, 57765), (Start: 51 @57840 has 1 MA's), (65, 57909), (76, 57975),

Gene: Tierra_54 Start: 37943, Stop: 38200, Start Num: 25

Candidate Starts for Tierra_54:

(Start: 25 @37943 has 113 MA's), (Start: 36 @37964 has 116 MA's), (49, 38018), (58, 38081), (59, 38090), (75, 38168),

Gene: TiniBug_51 Start: 38238, Stop: 38501, Start Num: 25

Candidate Starts for TiniBug_51:

(5, 37986), (Start: 25 @38238 has 113 MA's), (46, 38292), (53, 38361), (58, 38379),

Gene: TinyDot_55 Start: 34530, Stop: 34790, Start Num: 20

Candidate Starts for TinyDot_55:

(Start: 20 @34530 has 7 MA's), (72, 34740),

Gene: Tiri_51 Start: 37646, Stop: 37909, Start Num: 25

Candidate Starts for Tiri_51:

(Start: 25 @37646 has 113 MA's), (46, 37700), (58, 37787),

Gene: Tomaszewski_88 Start: 56045, Stop: 56305, Start Num: 36

Candidate Starts for Tomaszewski_88:

(Start: 36 @56045 has 116 MA's), (43, 56066), (Start: 51 @56141 has 1 MA's), (65, 56210), (76, 56276),

Gene: Topper_50 Start: 37471, Stop: 37734, Start Num: 25

Candidate Starts for Topper_50:

(Start: 25 @37471 has 113 MA's), (58, 37612),

Gene: Toto_91 Start: 57094, Stop: 57354, Start Num: 36

Candidate Starts for Toto_91:

(Start: 36 @57094 has 116 MA's), (43, 57115), (Start: 51 @57190 has 1 MA's), (65, 57259), (76, 57325),

Gene: Traaww1_89 Start: 55902, Stop: 56162, Start Num: 36

Candidate Starts for Traaww1_89:

(Start: 36 @55902 has 116 MA's), (43, 55923), (Start: 51 @55998 has 1 MA's), (65, 56067), (76, 56133),

Gene: TreyKay_51 Start: 37556, Stop: 37819, Start Num: 25

Candidate Starts for TreyKay_51:

(Start: 25 @37556 has 113 MA's), (46, 37610), (58, 37697),

Gene: TribbleTrouble_50 Start: 37335, Stop: 37601, Start Num: 21

Candidate Starts for TribbleTrouble_50:

(Start: 21 @37335 has 7 MA's), (34, 37356), (38, 37362), (58, 37476), (69, 37521), (71, 37530),

Gene: Trogglehumper_64 Start: 53677, Stop: 53435, Start Num: 51

Candidate Starts for Trogglehumper_64:

(Start: 51 @53677 has 1 MA's), (56, 53653),

Gene: TruffulaTree_50 Start: 37350, Stop: 37613, Start Num: 25

Candidate Starts for TruffulaTree_50:

(Start: 25 @37350 has 113 MA's), (58, 37491),

Gene: Tuco_94 Start: 57641, Stop: 57901, Start Num: 36

Candidate Starts for Tuco_94:

(Start: 36 @57641 has 116 MA's), (43, 57662), (Start: 51 @57737 has 1 MA's), (65, 57806), (76, 57872),

Gene: Twitch_50 Start: 37473, Stop: 37736, Start Num: 25

Candidate Starts for Twitch_50:

(Start: 25 @37473 has 113 MA's), (58, 37614),

Gene: Ukulele_88 Start: 56027, Stop: 56287, Start Num: 36

Candidate Starts for Ukulele_88:

(Start: 36 @56027 has 116 MA's), (43, 56048), (Start: 51 @56123 has 1 MA's), (65, 56192), (76, 56258),

Gene: Unicorn_53 Start: 37175, Stop: 37432, Start Num: 25

Candidate Starts for Unicorn_53:

(Start: 25 @37175 has 113 MA's), (Start: 36 @37196 has 116 MA's), (49, 37250), (58, 37313), (59, 37322), (75, 37400),

Gene: Urkel_51 Start: 38242, Stop: 38505, Start Num: 25

Candidate Starts for Urkel_51:

(5, 37990), (Start: 25 @38242 has 113 MA's), (46, 38296), (53, 38365), (58, 38383),

Gene: VWB_44 Start: 35402, Stop: 35647, Start Num: 29

Candidate Starts for VWB_44:

(7, 35270), (9, 35279), (10, 35282), (17, 35369), (27, 35399), (29, 35402), (58, 35531), (65, 35564), (71, 35582),

Gene: Veliki_51 Start: 37390, Stop: 37653, Start Num: 25

Candidate Starts for Veliki_51:

(Start: 25 @37390 has 113 MA's), (58, 37531),

Gene: Volt_97 Start: 48511, Stop: 48816, Start Num: 32

Candidate Starts for Volt_97:

(Start: 32 @48511 has 6 MA's), (46, 48544), (77, 48745), (81, 48769),

Gene: Wee_60 Start: 40789, Stop: 41067, Start Num: 13

Candidate Starts for Wee_60:

(Start: 13 @40789 has 1 MA's), (15, 40795), (Start: 16 @40798 has 1 MA's), (Start: 22 @40822 has 8 MA's), (60, 40981), (64, 40996), (66, 41002),

Gene: Wiggin_95 Start: 56303, Stop: 56563, Start Num: 36

Candidate Starts for Wiggin_95:

(Start: 36 @56303 has 116 MA's), (43, 56324), (Start: 51 @56399 has 1 MA's), (65, 56468), (76, 56534),

Gene: Willez_88 Start: 54914, Stop: 55174, Start Num: 36

Candidate Starts for Willez_88:

(Start: 36 @54914 has 116 MA's), (43, 54935), (Start: 51 @55010 has 1 MA's), (65, 55079), (76, 55145),

Gene: Xandras_92 Start: 56126, Stop: 56386, Start Num: 36

Candidate Starts for Xandras_92:

(Start: 36 @56126 has 116 MA's), (43, 56147), (Start: 51 @56222 has 1 MA's), (65, 56291), (76, 56357),

Gene: Ximenita_57 Start: 38244, Stop: 38495, Start Num: 25

Candidate Starts for Ximenita_57:

(Start: 25 @38244 has 113 MA's), (28, 38250), (58, 38382),

Gene: YassJohnny_90 Start: 55767, Stop: 56027, Start Num: 36

Candidate Starts for YassJohnny_90:

(Start: 36 @55767 has 116 MA's), (43, 55788), (Start: 51 @55863 has 1 MA's), (65, 55932), (76, 55998),

Gene: Youngblood_96 Start: 57596, Stop: 57856, Start Num: 36

Candidate Starts for Youngblood_96:

(Start: 36 @57596 has 116 MA's), (43, 57617), (Start: 51 @57692 has 1 MA's), (65, 57761), (76, 57827),

Gene: YoureAdopted_49 Start: 37555, Stop: 37818, Start Num: 25

Candidate Starts for YoureAdopted_49:

(Start: 25 @37555 has 113 MA's), (58, 37696),

Gene: Yuna_57 Start: 39151, Stop: 39429, Start Num: 25

Candidate Starts for Yuna_57:

(6, 39004), (Start: 25 @39151 has 113 MA's), (58, 39280), (69, 39325), (71, 39334),

Gene: Yunkel11_53 Start: 37143, Stop: 37406, Start Num: 25

Candidate Starts for Yunkel11_53:

(Start: 25 @37143 has 113 MA's), (Start: 31 @37155 has 2 MA's), (53, 37266), (58, 37284),

Gene: Zabiza_46 Start: 33661, Stop: 33924, Start Num: 25
Candidate Starts for Zabiza_46:
(Start: 25 @33661 has 113 MA's), (58, 33802),

Gene: Zavala_52 Start: 37632, Stop: 37895, Start Num: 25
Candidate Starts for Zavala_52:
(Start: 25 @37632 has 113 MA's), (58, 37773),

Gene: ZenTime222_40 Start: 31446, Stop: 31703, Start Num: 20
Candidate Starts for ZenTime222_40:
(3, 31170), (4, 31191), (Start: 20 @31446 has 7 MA's), (49, 31530), (63, 31620),

Gene: Ziko_96 Start: 48332, Stop: 48637, Start Num: 32
Candidate Starts for Ziko_96:
(Start: 32 @48332 has 6 MA's), (46, 48365), (77, 48566), (81, 48590),

Gene: xkcd_96 Start: 57780, Stop: 58040, Start Num: 36
Candidate Starts for xkcd_96:
(Start: 36 @57780 has 116 MA's), (43, 57801), (Start: 51 @57876 has 1 MA's), (65, 57945), (76, 58011),