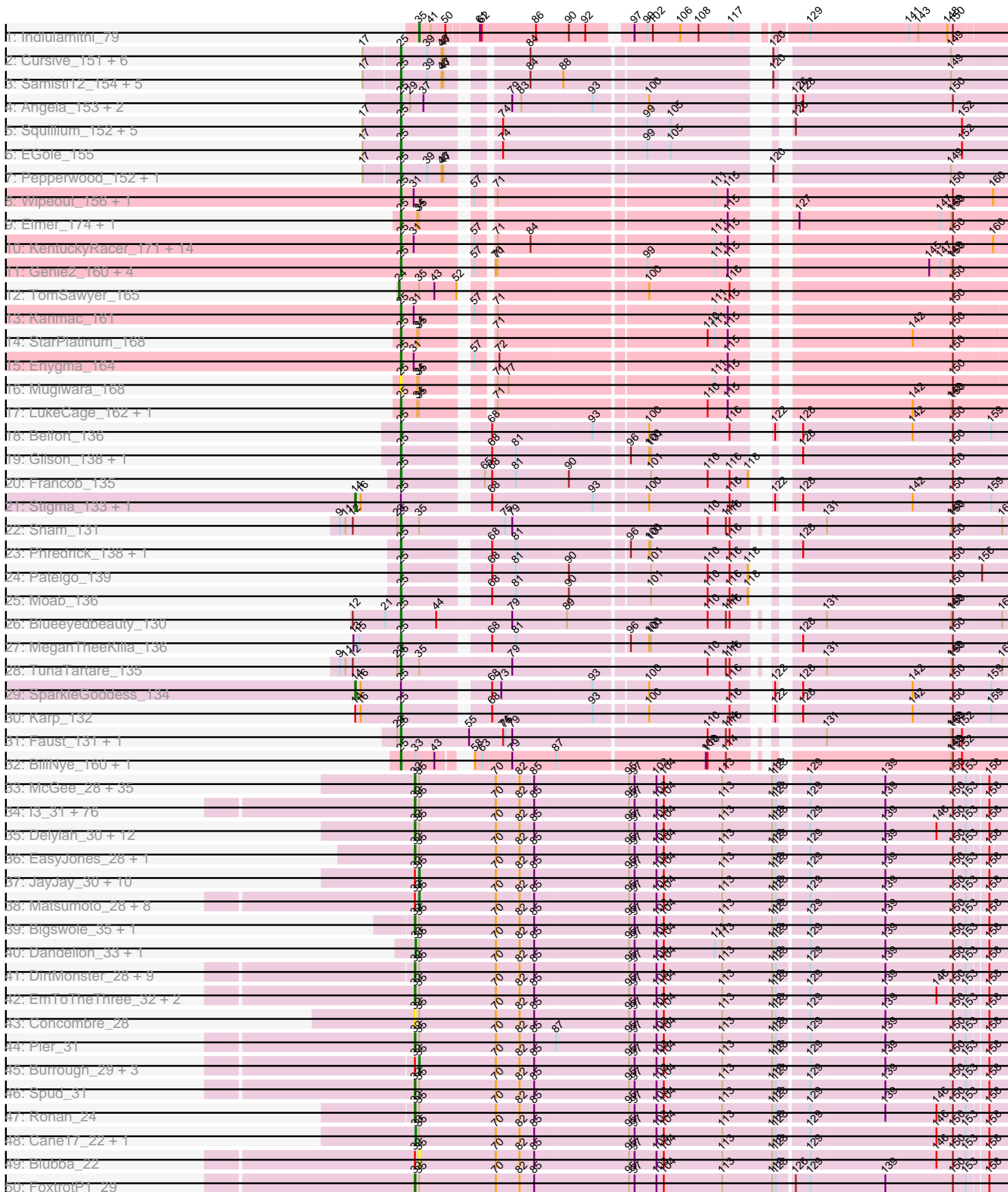
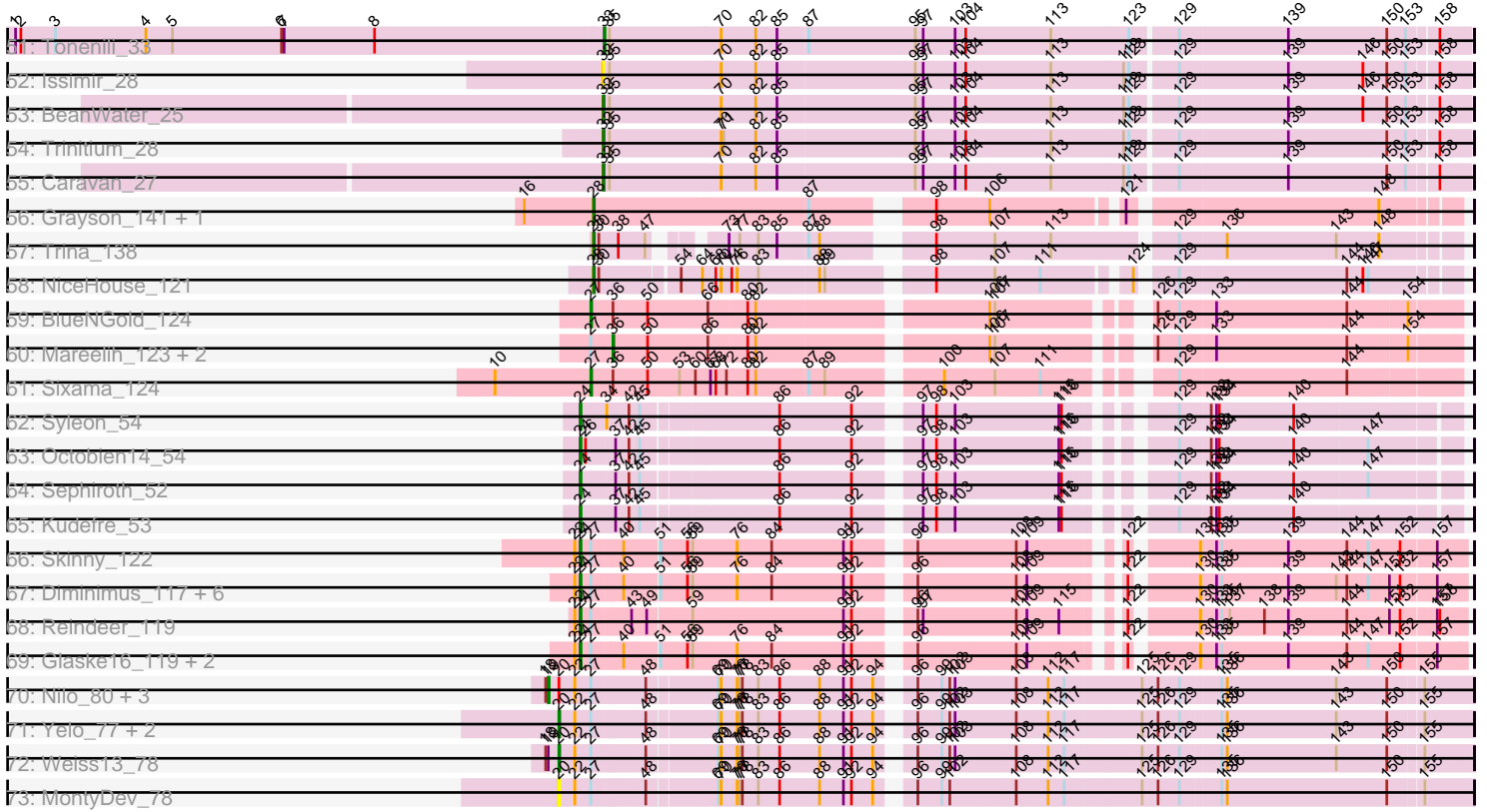


Pham 157526



Pham 157526



Note: Tracks are now grouped by subcluster and scaled. Switching in subcluster is indicated by changes in track color. Track scale is now set by default to display the region 30 bp upstream of start 1 to 30 bp downstream of the last possible start. If this default region is judged to be packed too tightly with annotated starts, the track will be further scaled to only show that region of the ORF with annotated starts. This action will be indicated by adding "Zoomed" to the title. For starts, yellow indicates the location of called starts comprised solely of Glimmer/GeneMark auto-annotations, green indicates the location of called starts with at least 1 manual gene annotation.

Pham 157526 Report

This analysis was run 04/13/24 on database version 558.

Pham number 157526 has 293 members, 29 are drafts.

Phages represented in each track:

- Track 1 : Indlulamithi_79
- Track 2 : Cursive_151, BlueOtter_155, Lululemon_154, Cross_153, PacManQ_154, Watermoore_152, HangryHippo_155
- Track 3 : Samisti12_154, Teutsch_152, Larnav_160, Tribute_152, Peebs_150, Sushi23_152
- Track 4 : Angela_153, LilMartin_151, MulchMansion_153
- Track 5 : Squillium_152, Bartholomune_152, Paradiddles_148, PinkiePie_149, Liandry_152, NootNoot_149
- Track 6 : EGole_155
- Track 7 : Pepperwood_152, Leo04_154
- Track 8 : Wipeout_156, Birchlyn_161
- Track 9 : Elmer_174, Wofford_157
- Track 10 : KentuckyRacer_171, JimJam_168, CeilingFan_171, Battuta_162, Quaran19_163, MindFlayer_157, Jollison_168, Bordeaux_161, Spilled_167, PumpkinSpice_165, Amabiko_163, Starbow_160, Gibbi_170, IchabodCrane_157, SaltySpittoon_163
- Track 11 : Genie2_160, Yaboi_161, Stanimal_158, BoomerJR_160, Sollertia_160
- Track 12 : TomSawyer_165
- Track 13 : Karimac_161
- Track 14 : StarPlatinum_168
- Track 15 : Enygma_164
- Track 16 : Mugiwara_168
- Track 17 : LukeCage_162, Spelly_165
- Track 18 : Belfort_136
- Track 19 : Gilson_138, Emma1919_138
- Track 20 : Francob_135
- Track 21 : Stigma_133, Comrade_132
- Track 22 : Sham_131
- Track 23 : Phredrick_138, Kenrey_141
- Track 24 : Patelgo_139
- Track 25 : Moab_136
- Track 26 : Blueeyedbeauty_130
- Track 27 : MeganTheeKilla_136
- Track 28 : TunaTartare_135
- Track 29 : SparkleGoddess_134
- Track 30 : Karp_132
- Track 31 : Faust_131, SeresaTree_132

- Track 32 : BillNye_160, Circinus_161
- Track 33 : McGee_28, Kboogie_29, LinStu_29, MoMoMixon_30, Babyland_28, Asterius_27, Astraea_30, IkeLoa_25, Grungle_22, ChaylaJr_28, Blackbrain_27, Koguma_25, FrayBell_35, Phox_28, JPickles_27, Bonray_29, Khaleesi_28, Sprinklers_29, NuevoMundo_32, Shaqnato_25, Dietrick_24, Cactojaque_26, StubbySaigey_28, BananaFence_30, Chargie21_28, EmmaElysia_27, Cali_29, StephanieG_29, BadAgartude_30, Turret_27, LRRHood_26, ErnieJ_30, Lukilu_22, Essence_28, Basquiat_28, McWolfish_28
- Track 34 : l3_31, Pleione_31, Naval22_31, Adlitam_29, LifeSavor_30, Pio_32, Maby2021_30, Gabriel_29, Grasshills_33, DTDevon_30, Phlegm_31, Amataga_29, YemiJoy2021_30, Shnickers_29, Teardrop_28, CharlieB_29, InigoMontoya_30, Gizmo_31, Patter_29, Ghost_29, Drazdys_29, Ava3_30, Izajani_30, InterFolia_36, Derek_30, Chomp_27, Jedediah_29, Lee7_28, Jemmno_29, Bangla1971_28, NedWong_30, Catera_27, Yucca_29, Zalkecks_31, Janiyra_29, Norm_29, Daffodil_31, ParkTD_28, Latch_29, EggyFarm_33, JustHall_28, Bread_30, Bxz1_29, Audrick_31, LolaVinca_32, TinyTim_29, Delilah_29, BigCity_33, Melpomini_28, Capablanca_31, CindyLou_29, Salacia_31, Willis_29, Quasimodo_29, Guwapp_29, Erdmann_30, ShiaLabeouf_29, Rahel_29, Littleton_29, ValleyTerrace_29, DrPhinkDaddy_29, SilverDipper_30, Mikro_27, YoungMoneyMata_29, Ngannou_27, SmallFry_29, Roots515_29, Pivoine_29, Spec_27, Shrimp_29, Jaygup_29, Atlantean_29, Tortoise16_28, MikeLiesIn_29, Tyke_31, Ewok_29, Momo_28
- Track 35 : Delylah_30, Flabslab_30, ET08_24, Rabinovish_28, Stubby_27, Sauce_30, HyRo_28, Shelob_31, Pinkcreek_21, RoMag_24, QBert_27, Alice_24, Shifa_26
- Track 36 : EasyJones_28, Rizal_27
- Track 37 : JayJay_30, Mangeria_32, Jessibeth14_28, ScottMcG_29, Darko_28, JulietS_24, Sebata_29, LordLeafolot_34, ChickenPhender_28, Fludd_28, Yassified_26
- Track 38 : Matsumoto_28, Specks_34, Phusco_29, ZygoTaiga_29, Gamgam_29, Breeniome_29, FudgeTart_30, Ading_29, Naija_29
- Track 39 : Bigswole_35, NoodleTree_28
- Track 40 : Dandelion_33, Nappy_30
- Track 41 : DirtMonster_28, ArcherS7_28, PurduePete_28, Nidhogg_30, Morizzled23_28, Kamryn_29, SrishMeg2525_28, Megamind_29, BackyardAgain_26, Wally_28
- Track 42 : EmToTheThree_32, Iota_26, Loanshark_29
- Track 43 : Concombre_28
- Track 44 : Pier_31
- Track 45 : Burrough_29, Zeenon_31, Bipolarisk_28, Napoleon13_28
- Track 46 : Spud_31
- Track 47 : Ronan_24
- Track 48 : Cane17_22, Colt_22
- Track 49 : Blubba_22
- Track 50 : FoxtrotP1_29
- Track 51 : Tonenili_33
- Track 52 : Issimir_28
- Track 53 : BeanWater_25
- Track 54 : Trinitium_28
- Track 55 : Caravan_27
- Track 56 : Grayson_141, Peregrin_142
- Track 57 : Trina_138
- Track 58 : NiceHouse_121
- Track 59 : BlueNGold_124

- Track 60 : Mareelih_123, Forza_125, Boopy_125
- Track 61 : Sixama_124
- Track 62 : Syleon_54
- Track 63 : Octobien14_54
- Track 64 : Sephiroth_52
- Track 65 : Kudrefre_53
- Track 66 : Skinny_122
- Track 67 : Diminimus_117, Auspice_116, Bricole_118, Dulcita_117, IPhane7_114, Bongo_116, TyDawg_111
- Track 68 : Reindeer_119
- Track 69 : Glaske16_119, LilhomieP_116, PegLeg_120
- Track 70 : Nilo_80, Riparian_80, Rope_78, Zenon_80
- Track 71 : Yelo_77, Send513_78, Candle_76
- Track 72 : Weiss13_78
- Track 73 : MontyDev_78

Summary of Final Annotations (See graph section above for start numbers):

The start number called the most often in the published annotations is 32, it was called in 142 of the 264 non-draft genes in the pham.

Genes that call this "Most Annotated" start:

- Adlitam_29, Alice_24, Amataga_29, ArcherS7_28, Asterius_27, Astraea_30, Atlantean_29, Audrick_31, Ava3_30, Babyland_28, BackyardAgain_26, BadAgartude_30, BananaFence_30, Bangla1971_28, Basquiat_28, BeanWater_25, BigCity_33, Bigswole_35, Blackbrain_27, Bonray_29, Bread_30, Bxz1_29, Cactojaque_26, Cali_29, Capablanca_31, Caravan_27, Catera_27, Chargie21_28, CharlieB_29, ChaylaJr_28, Chomp_27, CindyLou_29, Concombre_28, DTDevon_30, Daffodil_31, Delilah_29, Delylah_30, Derek_30, Dietrick_24, DirtMonster_28, DrPhinkDaddy_29, Drazdys_29, ET08_24, EasyJones_28, EggyFarm_33, EmToTheThree_32, EmmaElysia_27, Erdmann_30, ErnieJ_30, Essence_28, Ewok_29, Flabslab_30, FoxtrotP1_29, FrayBell_35, Gabriel_29, Ghost_29, Gizmo_31, Grasshills_33, Grungle_22, Guwapp_29, HyRo_28, I3_31, IkeLoa_25, InigoMontoya_30, InterFolia_36, Iota_26, Issimir_28, Izajani_30, JPickles_27, Janiyra_29, Jaygup_29, Jedediah_29, Jemmno_29, JustHall_28, Kamryn_29, Kboogie_29, Khaleesi_28, Koguma_25, LRRHood_26, Latch_29, Lee7_28, LifeSavor_30, LinStu_29, Littleton_29, Loanshark_29, LolaVinca_32, Lukilu_22, Maby2021_30, McGee_28, McWolfish_28, Megamind_29, Melpomini_28, MikeLiesIn_29, Mikro_27, MoMoMixon_30, Momo_28, Morizzled23_28, Naval22_31, NedWong_30, Ngannou_27, Nidhogg_30, NoodleTree_28, Norm_29, NuevoMundo_32, ParkTD_28, Patter_29, Phlegm_31, Phox_28, Pier_31, Pinkcreek_21, Pio_32, Pivoine_29, Pleione_31, PurduePete_28, QBert_27, Quasimodo_29, Rabinovish_28, Rahel_29, Rizal_27, RoMag_24, Ronan_24, Roots515_29, Salacia_31, Sauce_30, Shaqnato_25, Shelob_31, ShiaLabeouf_29, Shifa_26, Shnickers_29, Shrimp_29, SilverDipper_30, SmallFry_29, Spec_27, Sprinklers_29, Spud_31, SrishMeg2525_28, StephanieG_29, StubbySaigey_28, Stubby_27, Teardrop_28, TinyTim_29, Tortoise16_28, Trinitium_28, Turret_27, Tyke_31, ValleyTerrace_29, Wally_28, Willis_29, YemiJoy2021_30, YoungMoneyMata_29, Yucca_29, Zalkecks_31,

Genes that have the "Most Annotated" start but do not call it:

- Ading_29, Bipolarisk_28, Blubba_22, Breeniome_29, Burrough_29, ChickenPhender_28, Darko_28, Fludd_28, FudgeTart_30, Gamgam_29, JayJay_30, Jessibeth14_28, JulietS_24, LordLeafolot_34, Mangeria_32, Matsumoto_28, Naija_29, Napoleon13_28, Phusco_29, ScottMcG_29, Sebata_29, Specks_34, Yassified_26, Zeenon_31, ZygoTaiga_29,

Genes that do not have the "Most Annotated" start:

- Amabiko_163, Angela_153, Auspice_116, Bartholomune_152, Battuta_162, Belfort_136, BillNye_160, Birchlyn_161, BlueNGold_124, BlueOtter_155, Blueeyedbeauty_130, Bongo_116, BoomerJR_160, Boopy_125, Bordeaux_161, Bricole_118, Candle_76, Cane17_22, CeilingFan_171, Circinus_161, Colt_22, Comrade_132, Cross_153, Cursive_151, Dandelion_33, Diminimus_117, Dulcita_117, EGole_155, Elmer_174, Emma1919_138, Enygma_164, Faust_131, Forza_125, Francob_135, Genie2_160, Gibbi_170, Gilson_138, Glaske16_119, Grayson_141, HangryHippo_155, IPhane7_114, IchabodCrane_157, Indlulamithi_79, JimJam_168, Jollison_168, Karimac_161, Karp_132, Kenrey_141, KentuckyRacer_171, Kudrefre_53, Larnav_160, Leo04_154, Liandry_152, LilMartin_151, LilhomieP_116, LukeCage_162, Lululemon_154, Mareelih_123, MeganTheeKilla_136, MindFlayer_157, Moab_136, MontyDev_78, Mugiwara_168, MulchMansion_153, Nappy_30, NiceHouse_121, Nilo_80, NootNoot_149, Octobien14_54, PacManQ_154, Paradiddles_148, Patelgo_139, Peebs_150, PegLeg_120, Pepperwood_152, Peregrin_142, Phredrick_138, PinkiePie_149, PumpkinSpice_165, Quarant19_163, Reindeer_119, Riparian_80, Rope_78, SaltySpittoon_163, Samisti12_154, Send513_78, Sephiroth_52, SeresaTree_132, Sham_131, Sixama_124, Skinny_122, Sollertia_160, SparkleGoddess_134, Spelly_165, Spilled_167, Squillium_152, Stanimal_158, StarPlatinum_168, Starbow_160, Stigma_133, Sushi23_152, Syleon_54, Teutsch_152, TomSawyer_165, Tonenili_33, Tribute_152, Trina_138, TunaTartare_135, TyDawg_111, Watermoore_152, Weiss13_78, Wipeout_156, Wofford_157, Yaboi_161, Yelo_77, Zenon_80,

Summary by start number:

Start 14:

- Found in 4 of 293 (1.4%) of genes in pham
- Manual Annotations of this start: 3 of 264
- Called 75.0% of time when present
- Phage (with cluster) where this start called: Comrade_132 (BK1), SparkleGoddess_134 (BK1), Stigma_133 (BK1),

Start 19:

- Found in 5 of 293 (1.7%) of genes in pham
- Manual Annotations of this start: 4 of 264
- Called 80.0% of time when present
- Phage (with cluster) where this start called: Nilo_80 (R), Riparian_80 (R), Rope_78 (R), Zenon_80 (R),

Start 20:

- Found in 9 of 293 (3.1%) of genes in pham
- Manual Annotations of this start: 3 of 264
- Called 55.6% of time when present

- Phage (with cluster) where this start called: Candle_76 (R), MontyDev_78 (R), Send513_78 (R), Weiss13_78 (R), Yelo_77 (R),

Start 24:

- Found in 17 of 293 (5.8%) of genes in pham
- Manual Annotations of this start: 17 of 264
- Called 100.0% of time when present
- Phage (with cluster) where this start called: Auspice_116 (M1), Bongo_116 (M1), Bricole_118 (M1), Diminimus_117 (M1), Dulcita_117 (M1), Glaske16_119 (M1), IPhane7_114 (M1), Kudrefre_53 (DU1), LilhomieP_116 (M1), Octobien14_54 (DU1), PegLeg_120 (M1), Reindeer_119 (M1), Sephiroth_52 (DU1), Skinny_122 (M1), Syleon_54 (DU1), TomSawyer_165 (BE2), TyDawg_111 (M1),

Start 25:

- Found in 75 of 293 (25.6%) of genes in pham
- Manual Annotations of this start: 60 of 264
- Called 96.0% of time when present
- Phage (with cluster) where this start called: Amabiko_163 (BE2), Angela_153 (BE1), Bartholomune_152 (BE1), Battuta_162 (BE2), Belfort_136 (BK1), BillNye_160 (BK2), Birchlyn_161 (BE2), BlueOtter_155 (BE1), Blueeyedbeauty_130 (BK1), BoomerJR_160 (BE2), Bordeaux_161 (BE2), CeilingFan_171 (BE2), Circinus_161 (BK2), Cross_153 (BE1), Cursive_151 (BE1), EGole_155 (BE1), Elmer_174 (BE2), Emma1919_138 (BK1), Enygma_164 (BE2), Faust_131 (BK1), Francob_135 (BK1), Genie2_160 (BE2), Gibbi_170 (BE2), Gilson_138 (BK1), HangryHippo_155 (BE1), IchabodCrane_157 (BE2), JimJam_168 (BE2), Jollison_168 (BE2), Karimac_161 (BE2), Karp_132 (BK1), Kenrey_141 (BK1), KentuckyRacer_171 (BE2), Larnav_160 (BE1), Leo04_154 (BE1), Liandry_152 (BE1), LilMartin_151 (BE1), LukeCage_162 (BE2), Lululemon_154 (BE1), MeganTheeKilla_136 (BK1), MindFlayer_157 (BE2), Moab_136 (BK1), Mugiwara_168 (BE2), MulchMansion_153 (BE1), NootNoot_149 (BE1), PacManQ_154 (BE1), Paradiddles_148 (BE1), Patelgo_139 (BK1), Peebs_150 (BE1), Pepperwood_152 (BE1), Phredrick_138 (BK1), PinkiePie_149 (BE1), PumpkinSpice_165 (BE2), Quarant19_163 (BE2), SaltySpittoon_163 (BE2), Samisti12_154 (BE1), SeresaTree_132 (BK1), Sham_131 (BK1), Sollertia_160 (BE2), Spelly_165 (BE2), Spilled_167 (BE2), Squillium_152 (BE1), Stanimal_158 (BE2), StarPlatinum_168 (BE2), Starbow_160 (BE2), Sushi23_152 (BE1), Teutsch_152 (BE1), Tribute_152 (BE1), TunaTartare_135 (BK1), Watermoore_152 (BE1), Wipeout_156 (BE2), Wofford_157 (BE2), Yaboi_161 (BE2),

Start 27:

- Found in 26 of 293 (8.9%) of genes in pham
- Manual Annotations of this start: 2 of 264
- Called 7.7% of time when present
- Phage (with cluster) where this start called: BlueNGold_124 (DS), Sixama_124 (DS),

Start 28:

- Found in 4 of 293 (1.4%) of genes in pham
- Manual Annotations of this start: 4 of 264
- Called 100.0% of time when present
- Phage (with cluster) where this start called: Grayson_141 (CB), NiceHouse_121 (CE), Peregrin_142 (CB), Trina_138 (CE),

Start 32:

- Found in 177 of 293 (60.4%) of genes in pham
- Manual Annotations of this start: 142 of 264
- Called 85.9% of time when present
- Phage (with cluster) where this start called: Adlitam_29 (C1), Alice_24 (C1), Amataga_29 (C1), ArcherS7_28 (C1), Asterius_27 (C1), Astraea_30 (C1), Atlantean_29 (C1), Audrick_31 (C1), Ava3_30 (C1), Babyland_28 (C1), BackyardAgain_26 (C1), BadAgartude_30 (C1), BananaFence_30 (C1), Bangla1971_28 (C1), Basquiat_28 (C1), BeanWater_25 (C1), BigCity_33 (C1), Bigswole_35 (C1), Blackbrain_27 (C1), Bonray_29 (C1), Bread_30 (C1), Bxz1_29 (C1), Cactojaque_26 (C1), Cali_29 (C1), Capablanca_31 (C1), Caravan_27 (C1), Catera_27 (C1), Chargie21_28 (C1), CharlieB_29 (C1), ChaylaJr_28 (C1), Chomp_27 (C1), CindyLou_29 (C1), Concombre_28 (C1), DTDevon_30 (C1), Daffodil_31 (C1), Delilah_29 (C1), Delylah_30 (C1), Derek_30 (C1), Dietrick_24 (C1), DirtMonster_28 (C1), DrPhinkDaddy_29 (C1), Drazdys_29 (C1), ET08_24 (C1), EasyJones_28 (C1), EggyFarm_33 (C1), EmToTheThree_32 (C1), EmmaElysia_27 (C1), Erdmann_30 (C1), ErnieJ_30 (C1), Essence_28 (C1), Ewok_29 (C1), Flabslab_30 (C1), FoxtrotP1_29 (C1), FrayBell_35 (C1), Gabriel_29 (C1), Ghost_29 (C1), Gizmo_31 (C1), Grasshills_33 (C1), Grungle_22 (C1), Guwapp_29 (C1), HyRo_28 (C1), I3_31 (C1), IkeLoa_25 (C1), InigoMontoya_30 (C1), InterFolia_36 (C1), Iota_26 (C1), Issimir_28 (C1), Izajani_30 (C1), JPickles_27 (C1), Janiyra_29 (C1), Jaygup_29 (C1), Jedediah_29 (C1), Jemmno_29 (C1), JustHall_28 (C1), Kamryn_29 (C1), Kboogie_29 (C1), Khaleesi_28 (C1), Koguma_25 (C1), LRRHood_26 (C1), Latch_29 (C1), Lee7_28 (C1), LifeSavor_30 (C1), LinStu_29 (C1), Littleton_29 (C1), Loanshark_29 (C1), LolaVinca_32 (C1), Lukilu_22 (C1), Maby2021_30 (C1), McGee_28 (C1), McWolfish_28 (C1), Megamind_29 (C1), Melpomini_28 (C1), MikeLiesIn_29 (C1), Mikro_27 (C1), MoMoMixon_30 (C1), Momo_28 (C1), Morizzled23_28 (C1), Naval22_31 (C1), NedWong_30 (C1), Ngannou_27 (C1), Nidhogg_30 (C1), NoodleTree_28 (C1), Norm_29 (C1), NuevoMundo_32 (C1), ParkTD_28 (C1), Patter_29 (C1), Phlegm_31 (C1), Phox_28 (C1), Pier_31 (C1), Pinkcreek_21 (C1), Pio_32 (C1), Pivoine_29 (C1), Pleione_31 (C1), PurduePete_28 (C1), QBert_27 (C1), Quasimodo_29 (C1), Rabinovich_28 (C1), Rahel_29 (C1), Rizal_27 (C1), RoMag_24 (C1), Ronan_24 (C1), Roots515_29 (C1), Salacia_31 (C1), Sauce_30 (C1), Shaqato_25 (C1), Shelob_31 (C1), ShiaLabeouf_29 (C1), Shifa_26 (C1), Shnickers_29 (C1), Shrimp_29 (C1), SilverDipper_30 (C1), SmallFry_29 (C1), Spec_27 (C1), Sprinklers_29 (C1), Spud_31 (C1), SrishMeg2525_28 (C1), StephanieG_29 (C1), StubbySaigey_28 (C1), Stubby_27 (C1), Teardrop_28 (C1), TinyTim_29 (C1), Tortoise16_28 (C1), Trinitium_28 (C1), Turret_27 (C1), Tyke_31 (C1), ValleyTerrace_29 (C1), Wally_28 (C1), Willis_29 (C1), YemiJoy2021_30 (C1), YoungMoneyMata_29 (C1), Yucca_29 (C1), Zalkecks_31 (C1),

Start 33:

- Found in 7 of 293 (2.4%) of genes in pham
- Manual Annotations of this start: 5 of 264
- Called 71.4% of time when present
- Phage (with cluster) where this start called: Cane17_22 (C1), Colt_22 (C1), Dandelion_33 (C1), Nappy_30 (C1), Tonenili_33 (C1),

Start 35:

- Found in 192 of 293 (65.5%) of genes in pham
- Manual Annotations of this start: 21 of 264
- Called 13.5% of time when present

- Phage (with cluster) where this start called: Ading_29 (C1), Bipolarisk_28 (C1), Blubba_22 (C1), Breeniome_29 (C1), Burrough_29 (C1), ChickenPhender_28 (C1), Darko_28 (C1), Fludd_28 (C1), FudgeTart_30 (C1), Gamgam_29 (C1), Indlulamithi_79 (AC), JayJay_30 (C1), Jessibeth14_28 (C1), JulietS_24 (C1), LordLeafolot_34 (C1), Mangeria_32 (C1), Matsumoto_28 (C1), Naija_29 (C1), Napoleon13_28 (C1), Phusco_29 (C1), ScottMcG_29 (C1), Sebata_29 (C1), Specks_34 (C1), Yassified_26 (C1), Zeenon_31 (C1), ZygoTaiga_29 (C1),

Start 36:

- Found in 5 of 293 (1.7%) of genes in pham
- Manual Annotations of this start: 3 of 264
- Called 60.0% of time when present
- Phage (with cluster) where this start called: Boopy_125 (DS), Forza_125 (DS), Mareelih_123 (DS),

Summary by clusters:

There are 12 clusters represented in this pham: AC, CB, CE, R, M1, BK1, BK2, BE2, DU1, C1, BE1, DS,

Info for manual annotations of cluster AC:

- Start number 35 was manually annotated 1 time for cluster AC.

Info for manual annotations of cluster BE1:

- Start number 25 was manually annotated 20 times for cluster BE1.

Info for manual annotations of cluster BE2:

- Start number 24 was manually annotated 1 time for cluster BE2.
- Start number 25 was manually annotated 24 times for cluster BE2.

Info for manual annotations of cluster BK1:

- Start number 14 was manually annotated 3 times for cluster BK1.
- Start number 25 was manually annotated 14 times for cluster BK1.

Info for manual annotations of cluster BK2:

- Start number 25 was manually annotated 2 times for cluster BK2.

Info for manual annotations of cluster C1:

- Start number 32 was manually annotated 142 times for cluster C1.
- Start number 33 was manually annotated 5 times for cluster C1.
- Start number 35 was manually annotated 20 times for cluster C1.

Info for manual annotations of cluster CB:

- Start number 28 was manually annotated 2 times for cluster CB.

Info for manual annotations of cluster CE:

- Start number 28 was manually annotated 2 times for cluster CE.

Info for manual annotations of cluster DS:

- Start number 27 was manually annotated 2 times for cluster DS.
- Start number 36 was manually annotated 3 times for cluster DS.

Info for manual annotations of cluster DU1:

- Start number 24 was manually annotated 4 times for cluster DU1.

Info for manual annotations of cluster M1:

- Start number 24 was manually annotated 12 times for cluster M1.

Info for manual annotations of cluster R:

- Start number 19 was manually annotated 4 times for cluster R.
- Start number 20 was manually annotated 3 times for cluster R.

Gene Information:

Gene: Ading_29 Start: 8846, Stop: 9784, Start Num: 35

Candidate Starts for Ading_29:

(Start: 32 @8840 has 142 MA's), (Start: 35 @8846 has 21 MA's), (70, 8969), (82, 9008), (85, 9032), (95, 9185), (97, 9194), (103, 9230), (104, 9242), (113, 9335), (119, 9416), (123, 9422), (129, 9470), (139, 9590), (150, 9701), (153, 9722), (158, 9752),

Gene: Adlitam_29 Start: 8857, Stop: 9801, Start Num: 32

Candidate Starts for Adlitam_29:

(Start: 32 @8857 has 142 MA's), (Start: 35 @8863 has 21 MA's), (70, 8986), (82, 9025), (85, 9049), (95, 9202), (97, 9211), (103, 9247), (104, 9259), (113, 9352), (119, 9433), (123, 9439), (129, 9487), (139, 9607), (150, 9718), (153, 9739), (158, 9769),

Gene: Alice_24 Start: 7935, Stop: 8879, Start Num: 32

Candidate Starts for Alice_24:

(Start: 32 @7935 has 142 MA's), (Start: 35 @7941 has 21 MA's), (70, 8064), (82, 8103), (85, 8127), (95, 8280), (97, 8289), (103, 8325), (104, 8337), (113, 8430), (119, 8511), (123, 8517), (129, 8565), (139, 8685), (146, 8769), (150, 8796), (153, 8817), (158, 8847),

Gene: Amabiko_163 Start: 89405, Stop: 90271, Start Num: 25

Candidate Starts for Amabiko_163:

(Start: 25 @89405 has 60 MA's), (31, 89426), (57, 89498), (71, 89519), (84, 89573), (111, 89855), (115, 89876), (150, 90182), (160, 90242),

Gene: Amataga_29 Start: 8861, Stop: 9805, Start Num: 32

Candidate Starts for Amataga_29:

(Start: 32 @8861 has 142 MA's), (Start: 35 @8867 has 21 MA's), (70, 8990), (82, 9029), (85, 9053), (95, 9206), (97, 9215), (103, 9251), (104, 9263), (113, 9356), (119, 9437), (123, 9443), (129, 9491), (139, 9611), (150, 9722), (153, 9743), (158, 9773),

Gene: Angela_153 Start: 88640, Stop: 89515, Start Num: 25

Candidate Starts for Angela_153:

(Start: 25 @88640 has 60 MA's), (29, 88655), (37, 88676), (79, 88778), (83, 88793), (93, 88907), (100, 88985), (126, 89162), (128, 89174), (150, 89420),

Gene: ArcherS7_28 Start: 8851, Stop: 9795, Start Num: 32

Candidate Starts for ArcherS7_28:

(Start: 32 @8851 has 142 MA's), (Start: 35 @8857 has 21 MA's), (70, 8980), (82, 9019), (85, 9043), (95, 9196), (97, 9205), (103, 9241), (104, 9253), (113, 9346), (119, 9427), (123, 9433), (129, 9481), (139, 9601), (150, 9712), (153, 9733), (158, 9763),

Gene: Asterius_27 Start: 9126, Stop: 10070, Start Num: 32

Candidate Starts for Asterius_27:

(Start: 32 @9126 has 142 MA's), (Start: 35 @9132 has 21 MA's), (70, 9255), (82, 9294), (85, 9318), (95, 9471), (97, 9480), (103, 9516), (104, 9528), (113, 9621), (119, 9702), (123, 9708), (129, 9756), (139, 9876), (150, 9987), (153, 10008), (158, 10038),

Gene: Astraea_30 Start: 9031, Stop: 9975, Start Num: 32

Candidate Starts for Astraea_30:

(Start: 32 @9031 has 142 MA's), (Start: 35 @9037 has 21 MA's), (70, 9160), (82, 9199), (85, 9223), (95, 9376), (97, 9385), (103, 9421), (104, 9433), (113, 9526), (119, 9607), (123, 9613), (129, 9661), (139, 9781), (150, 9892), (153, 9913), (158, 9943),

Gene: Atlantean_29 Start: 8861, Stop: 9805, Start Num: 32

Candidate Starts for Atlantean_29:

(Start: 32 @8861 has 142 MA's), (Start: 35 @8867 has 21 MA's), (70, 8990), (82, 9029), (85, 9053), (95, 9206), (97, 9215), (103, 9251), (104, 9263), (113, 9356), (119, 9437), (123, 9443), (129, 9491), (139, 9611), (150, 9722), (153, 9743), (158, 9773),

Gene: Audrick_31 Start: 8840, Stop: 9784, Start Num: 32

Candidate Starts for Audrick_31:

(Start: 32 @8840 has 142 MA's), (Start: 35 @8846 has 21 MA's), (70, 8969), (82, 9008), (85, 9032), (95, 9185), (97, 9194), (103, 9230), (104, 9242), (113, 9335), (119, 9416), (123, 9422), (129, 9470), (139, 9590), (150, 9701), (153, 9722), (158, 9752),

Gene: Auspice_116 Start: 62097, Stop: 62996, Start Num: 24

Candidate Starts for Auspice_116:

(22, 62091), (Start: 24 @62097 has 17 MA's), (Start: 27 @62109 has 2 MA's), (40, 62142), (51, 62178), (56, 62208), (59, 62214), (76, 62262), (84, 62301), (91, 62382), (92, 62391), (96, 62442), (108, 62550), (109, 62562), (122, 62643), (130, 62706), (133, 62721), (135, 62727), (139, 62802), (143, 62856), (144, 62868), (147, 62892), (151, 62916), (152, 62928), (157, 62964),

Gene: Ava3_30 Start: 9406, Stop: 10350, Start Num: 32

Candidate Starts for Ava3_30:

(Start: 32 @9406 has 142 MA's), (Start: 35 @9412 has 21 MA's), (70, 9535), (82, 9574), (85, 9598), (95, 9751), (97, 9760), (103, 9796), (104, 9808), (113, 9901), (119, 9982), (123, 9988), (129, 10036), (139, 10156), (150, 10267), (153, 10288), (158, 10318),

Gene: Babyland_28 Start: 8299, Stop: 9243, Start Num: 32

Candidate Starts for Babyland_28:

(Start: 32 @8299 has 142 MA's), (Start: 35 @8305 has 21 MA's), (70, 8428), (82, 8467), (85, 8491), (95, 8644), (97, 8653), (103, 8689), (104, 8701), (113, 8794), (119, 8875), (123, 8881), (129, 8929), (139, 9049), (150, 9160), (153, 9181), (158, 9211),

Gene: BackyardAgain_26 Start: 8280, Stop: 9224, Start Num: 32

Candidate Starts for BackyardAgain_26:

(Start: 32 @8280 has 142 MA's), (Start: 35 @8286 has 21 MA's), (70, 8409), (82, 8448), (85, 8472), (95, 8625), (97, 8634), (103, 8670), (104, 8682), (113, 8775), (119, 8856), (123, 8862), (129, 8910), (139, 9030), (150, 9141), (153, 9162), (158, 9192),

Gene: BadAgartude_30 Start: 9493, Stop: 10437, Start Num: 32

Candidate Starts for BadAgartude_30:

(Start: 32 @9493 has 142 MA's), (Start: 35 @9499 has 21 MA's), (70, 9622), (82, 9661), (85, 9685), (95, 9838), (97, 9847), (103, 9883), (104, 9895), (113, 9988), (119, 10069), (123, 10075), (129,

10123), (139, 10243), (150, 10354), (153, 10375), (158, 10405),

Gene: BananaFence_30 Start: 9290, Stop: 10234, Start Num: 32

Candidate Starts for BananaFence_30:

(Start: 32 @9290 has 142 MA's), (Start: 35 @9296 has 21 MA's), (70, 9419), (82, 9458), (85, 9482), (95, 9635), (97, 9644), (103, 9680), (104, 9692), (113, 9785), (119, 9866), (123, 9872), (129, 9920), (139, 10040), (150, 10151), (153, 10172), (158, 10202),

Gene: Bangla1971_28 Start: 8857, Stop: 9801, Start Num: 32

Candidate Starts for Bangla1971_28:

(Start: 32 @8857 has 142 MA's), (Start: 35 @8863 has 21 MA's), (70, 8986), (82, 9025), (85, 9049), (95, 9202), (97, 9211), (103, 9247), (104, 9259), (113, 9352), (119, 9433), (123, 9439), (129, 9487), (139, 9607), (150, 9718), (153, 9739), (158, 9769),

Gene: Bartholomune_152 Start: 88365, Stop: 89234, Start Num: 25

Candidate Starts for Bartholomune_152:

(17, 88305), (Start: 25 @88365 has 60 MA's), (74, 88488), (99, 88707), (105, 88746), (126, 88884), (152, 89157),

Gene: Basquiat_28 Start: 8280, Stop: 9224, Start Num: 32

Candidate Starts for Basquiat_28:

(Start: 32 @8280 has 142 MA's), (Start: 35 @8286 has 21 MA's), (70, 8409), (82, 8448), (85, 8472), (95, 8625), (97, 8634), (103, 8670), (104, 8682), (113, 8775), (119, 8856), (123, 8862), (129, 8910), (139, 9030), (150, 9141), (153, 9162), (158, 9192),

Gene: Battuta_162 Start: 89378, Stop: 90244, Start Num: 25

Candidate Starts for Battuta_162:

(Start: 25 @89378 has 60 MA's), (31, 89399), (57, 89471), (71, 89492), (84, 89546), (111, 89828), (115, 89849), (150, 90155), (160, 90215),

Gene: BeanWater_25 Start: 9250, Stop: 10194, Start Num: 32

Candidate Starts for BeanWater_25:

(Start: 32 @9250 has 142 MA's), (Start: 35 @9256 has 21 MA's), (70, 9379), (82, 9418), (85, 9442), (95, 9595), (97, 9604), (103, 9640), (104, 9652), (113, 9745), (119, 9826), (123, 9832), (129, 9880), (139, 10000), (146, 10084), (150, 10111), (153, 10132), (158, 10162),

Gene: Belfort_136 Start: 79194, Stop: 80081, Start Num: 25

Candidate Starts for Belfort_136:

(Start: 25 @79194 has 60 MA's), (68, 79314), (93, 79476), (100, 79554), (116, 79683), (122, 79719), (128, 79740), (142, 79920), (150, 79986), (159, 80049),

Gene: BigCity_33 Start: 10386, Stop: 11330, Start Num: 32

Candidate Starts for BigCity_33:

(Start: 32 @10386 has 142 MA's), (Start: 35 @10392 has 21 MA's), (70, 10515), (82, 10554), (85, 10578), (95, 10731), (97, 10740), (103, 10776), (104, 10788), (113, 10881), (119, 10962), (123, 10968), (129, 11016), (139, 11136), (150, 11247), (153, 11268), (158, 11298),

Gene: Bigswole_35 Start: 11196, Stop: 12140, Start Num: 32

Candidate Starts for Bigswole_35:

(Start: 32 @11196 has 142 MA's), (Start: 35 @11202 has 21 MA's), (70, 11325), (82, 11364), (85, 11388), (95, 11541), (97, 11550), (103, 11586), (104, 11598), (113, 11691), (119, 11772), (123, 11778), (129, 11826), (139, 11946), (150, 12057), (153, 12078), (158, 12108),

Gene: BillNye_160 Start: 91189, Stop: 92073, Start Num: 25

Candidate Starts for BillNye_160:

(Start: 25 @91189 has 60 MA's), (Start: 33 @91213 has 5 MA's), (43, 91240), (58, 91270), (63, 91282), (79, 91327), (87, 91396), (109, 91630), (110, 91633), (114, 91663), (149, 91975), (150, 91978), (152, 91993),

Gene: Bipolarisk_28 Start: 9123, Stop: 10061, Start Num: 35

Candidate Starts for Bipolarisk_28:

(Start: 32 @9117 has 142 MA's), (Start: 35 @9123 has 21 MA's), (70, 9246), (82, 9285), (85, 9309), (95, 9462), (97, 9471), (103, 9507), (104, 9519), (113, 9612), (119, 9693), (123, 9699), (129, 9747), (139, 9867), (150, 9978), (153, 9999), (158, 10029),

Gene: Birchlyn_161 Start: 87037, Stop: 87903, Start Num: 25

Candidate Starts for Birchlyn_161:

(Start: 25 @87037 has 60 MA's), (31, 87058), (57, 87130), (71, 87151), (111, 87487), (115, 87508), (150, 87814), (160, 87874),

Gene: Blackbrain_27 Start: 8096, Stop: 9040, Start Num: 32

Candidate Starts for Blackbrain_27:

(Start: 32 @8096 has 142 MA's), (Start: 35 @8102 has 21 MA's), (70, 8225), (82, 8264), (85, 8288), (95, 8441), (97, 8450), (103, 8486), (104, 8498), (113, 8591), (119, 8672), (123, 8678), (129, 8726), (139, 8846), (150, 8957), (153, 8978), (158, 9008),

Gene: Blubba_22 Start: 7593, Stop: 8531, Start Num: 35

Candidate Starts for Blubba_22:

(Start: 32 @7587 has 142 MA's), (Start: 35 @7593 has 21 MA's), (70, 7716), (82, 7755), (85, 7779), (95, 7932), (97, 7941), (103, 7977), (104, 7989), (113, 8082), (119, 8163), (123, 8169), (129, 8217), (146, 8421), (150, 8448), (153, 8469), (158, 8499),

Gene: BlueNGold_124 Start: 79970, Stop: 79086, Start Num: 27

Candidate Starts for BlueNGold_124:

(Start: 27 @79970 has 2 MA's), (Start: 36 @79946 has 3 MA's), (50, 79907), (66, 79841), (80, 79799), (82, 79790), (106, 79556), (107, 79550), (126, 79415), (129, 79391), (133, 79352), (144, 79205), (154, 79139),

Gene: BlueOtter_155 Start: 90426, Stop: 91295, Start Num: 25

Candidate Starts for BlueOtter_155:

(17, 90372), (Start: 25 @90426 has 60 MA's), (39, 90468), (46, 90489), (47, 90492), (84, 90594), (120, 90933), (149, 91200),

Gene: Blueeyedbeauty_130 Start: 76379, Stop: 77290, Start Num: 25

Candidate Starts for Blueeyedbeauty_130:

(12, 76304), (21, 76355), (Start: 25 @76379 has 60 MA's), (44, 76436), (79, 76547), (89, 76634), (110, 76850), (114, 76880), (116, 76886), (131, 76988), (149, 77192), (150, 77195), (161, 77273),

Gene: Bongo_116 Start: 61713, Stop: 62612, Start Num: 24

Candidate Starts for Bongo_116:

(22, 61707), (Start: 24 @61713 has 17 MA's), (Start: 27 @61725 has 2 MA's), (40, 61758), (51, 61794), (56, 61824), (59, 61830), (76, 61878), (84, 61917), (91, 61998), (92, 62007), (96, 62058), (108, 62166), (109, 62178), (122, 62259), (130, 62322), (133, 62337), (135, 62343), (139, 62418), (143, 62472), (144, 62484), (147, 62508), (151, 62532), (152, 62544), (157, 62580),

Gene: Bonray_29 Start: 9394, Stop: 10338, Start Num: 32

Candidate Starts for Bonray_29:

(Start: 32 @9394 has 142 MA's), (Start: 35 @9400 has 21 MA's), (70, 9523), (82, 9562), (85, 9586), (95, 9739), (97, 9748), (103, 9784), (104, 9796), (113, 9889), (119, 9970), (123, 9976), (129, 10024), (139, 10144), (150, 10255), (153, 10276), (158, 10306),

Gene: BoomerJR_160 Start: 89798, Stop: 90667, Start Num: 25

Candidate Starts for BoomerJR_160:

(Start: 25 @89798 has 60 MA's), (57, 89891), (70, 89909), (71, 89912), (99, 90140), (111, 90248), (115, 90269), (145, 90536), (147, 90554), (149, 90572), (150, 90575),

Gene: Boopy_125 Start: 79958, Stop: 79098, Start Num: 36

Candidate Starts for Boopy_125:

(Start: 27 @79982 has 2 MA's), (Start: 36 @79958 has 3 MA's), (50, 79919), (66, 79853), (80, 79811), (82, 79802), (106, 79568), (107, 79562), (126, 79427), (129, 79403), (133, 79364), (144, 79217), (154, 79151),

Gene: Bordeaux_161 Start: 89885, Stop: 90751, Start Num: 25

Candidate Starts for Bordeaux_161:

(Start: 25 @89885 has 60 MA's), (31, 89906), (57, 89978), (71, 89999), (84, 90053), (111, 90335), (115, 90356), (150, 90662), (160, 90722),

Gene: Bread_30 Start: 9406, Stop: 10350, Start Num: 32

Candidate Starts for Bread_30:

(Start: 32 @9406 has 142 MA's), (Start: 35 @9412 has 21 MA's), (70, 9535), (82, 9574), (85, 9598), (95, 9751), (97, 9760), (103, 9796), (104, 9808), (113, 9901), (119, 9982), (123, 9988), (129, 10036), (139, 10156), (150, 10267), (153, 10288), (158, 10318),

Gene: Breeniome_29 Start: 8286, Stop: 9233, Start Num: 35

Candidate Starts for Breeniome_29:

(Start: 32 @8280 has 142 MA's), (Start: 35 @8286 has 21 MA's), (70, 8409), (82, 8448), (85, 8472), (95, 8625), (97, 8634), (103, 8670), (104, 8682), (113, 8775), (119, 8856), (123, 8862), (129, 8919), (139, 9039), (150, 9150), (153, 9171), (158, 9201),

Gene: Bricole_118 Start: 61861, Stop: 62760, Start Num: 24

Candidate Starts for Bricole_118:

(22, 61855), (Start: 24 @61861 has 17 MA's), (Start: 27 @61873 has 2 MA's), (40, 61906), (51, 61942), (56, 61972), (59, 61978), (76, 62026), (84, 62065), (91, 62146), (92, 62155), (96, 62206), (108, 62314), (109, 62326), (122, 62407), (130, 62470), (133, 62485), (135, 62491), (139, 62566), (143, 62620), (144, 62632), (147, 62656), (151, 62680), (152, 62692), (157, 62728),

Gene: Burrough_29 Start: 9123, Stop: 10061, Start Num: 35

Candidate Starts for Burrough_29:

(Start: 32 @9117 has 142 MA's), (Start: 35 @9123 has 21 MA's), (70, 9246), (82, 9285), (85, 9309), (95, 9462), (97, 9471), (103, 9507), (104, 9519), (113, 9612), (119, 9693), (123, 9699), (129, 9747), (139, 9867), (150, 9978), (153, 9999), (158, 10029),

Gene: Bxz1_29 Start: 9866, Stop: 10810, Start Num: 32

Candidate Starts for Bxz1_29:

(Start: 32 @9866 has 142 MA's), (Start: 35 @9872 has 21 MA's), (70, 9995), (82, 10034), (85, 10058), (95, 10211), (97, 10220), (103, 10256), (104, 10268), (113, 10361), (119, 10442), (123, 10448), (129, 10496), (139, 10616), (150, 10727), (153, 10748), (158, 10778),

Gene: Cactojaque_26 Start: 7985, Stop: 8929, Start Num: 32

Candidate Starts for Cactojaque_26:

(Start: 32 @7985 has 142 MA's), (Start: 35 @7991 has 21 MA's), (70, 8114), (82, 8153), (85, 8177), (95, 8330), (97, 8339), (103, 8375), (104, 8387), (113, 8480), (119, 8561), (123, 8567), (129, 8615), (139, 8735), (150, 8846), (153, 8867), (158, 8897),

Gene: Cali_29 Start: 10427, Stop: 11371, Start Num: 32

Candidate Starts for Cali_29:

(Start: 32 @10427 has 142 MA's), (Start: 35 @10433 has 21 MA's), (70, 10556), (82, 10595), (85, 10619), (95, 10772), (97, 10781), (103, 10817), (104, 10829), (113, 10922), (119, 11003), (123, 11009), (129, 11057), (139, 11177), (150, 11288), (153, 11309), (158, 11339),

Gene: Candle_76 Start: 60340, Stop: 61302, Start Num: 20

Candidate Starts for Candle_76:

(Start: 20 @60340 has 3 MA's), (22, 60358), (Start: 27 @60376 has 2 MA's), (48, 60433), (69, 60505), (70, 60508), (76, 60523), (77, 60526), (78, 60529), (83, 60547), (86, 60571), (88, 60616), (91, 60643), (92, 60652), (94, 60676), (96, 60703), (99, 60730), (102, 60739), (103, 60745), (108, 60811), (112, 60847), (117, 60865), (125, 60946), (126, 60961), (129, 60985), (135, 61027), (136, 61033), (143, 61156), (150, 61213), (155, 61249),

Gene: Cane17_22 Start: 7459, Stop: 8403, Start Num: 33

Candidate Starts for Cane17_22:

(Start: 33 @7459 has 5 MA's), (Start: 35 @7465 has 21 MA's), (70, 7588), (82, 7627), (85, 7651), (95, 7804), (97, 7813), (103, 7849), (104, 7861), (113, 7954), (119, 8035), (123, 8041), (129, 8089), (146, 8293), (150, 8320), (153, 8341), (158, 8371),

Gene: Capablanca_31 Start: 9986, Stop: 10930, Start Num: 32

Candidate Starts for Capablanca_31:

(Start: 32 @9986 has 142 MA's), (Start: 35 @9992 has 21 MA's), (70, 10115), (82, 10154), (85, 10178), (95, 10331), (97, 10340), (103, 10376), (104, 10388), (113, 10481), (119, 10562), (123, 10568), (129, 10616), (139, 10736), (150, 10847), (153, 10868), (158, 10898),

Gene: Caravan_27 Start: 8676, Stop: 9620, Start Num: 32

Candidate Starts for Caravan_27:

(Start: 32 @8676 has 142 MA's), (Start: 35 @8682 has 21 MA's), (70, 8805), (82, 8844), (85, 8868), (95, 9021), (97, 9030), (103, 9066), (104, 9078), (113, 9171), (119, 9252), (123, 9258), (129, 9306), (139, 9426), (150, 9537), (153, 9558), (158, 9588),

Gene: Catera_27 Start: 8284, Stop: 9228, Start Num: 32

Candidate Starts for Catera_27:

(Start: 32 @8284 has 142 MA's), (Start: 35 @8290 has 21 MA's), (70, 8413), (82, 8452), (85, 8476), (95, 8629), (97, 8638), (103, 8674), (104, 8686), (113, 8779), (119, 8860), (123, 8866), (129, 8914), (139, 9034), (150, 9145), (153, 9166), (158, 9196),

Gene: CeilingFan_171 Start: 89911, Stop: 90777, Start Num: 25

Candidate Starts for CeilingFan_171:

(Start: 25 @89911 has 60 MA's), (31, 89932), (57, 90004), (71, 90025), (84, 90079), (111, 90361), (115, 90382), (150, 90688), (160, 90748),

Gene: Chargie21_28 Start: 8280, Stop: 9224, Start Num: 32

Candidate Starts for Chargie21_28:

(Start: 32 @8280 has 142 MA's), (Start: 35 @8286 has 21 MA's), (70, 8409), (82, 8448), (85, 8472), (95, 8625), (97, 8634), (103, 8670), (104, 8682), (113, 8775), (119, 8856), (123, 8862), (129, 8910), (139, 9030), (150, 9141), (153, 9162), (158, 9192),

Gene: CharlieB_29 Start: 8437, Stop: 9381, Start Num: 32

Candidate Starts for CharlieB_29:

(Start: 32 @8437 has 142 MA's), (Start: 35 @8443 has 21 MA's), (70, 8566), (82, 8605), (85, 8629), (95, 8782), (97, 8791), (103, 8827), (104, 8839), (113, 8932), (119, 9013), (123, 9019), (129, 9067), (139, 9187), (150, 9298), (153, 9319), (158, 9349),

Gene: ChaylaJr_28 Start: 8367, Stop: 9311, Start Num: 32

Candidate Starts for ChaylaJr_28:

(Start: 32 @8367 has 142 MA's), (Start: 35 @8373 has 21 MA's), (70, 8496), (82, 8535), (85, 8559), (95, 8712), (97, 8721), (103, 8757), (104, 8769), (113, 8862), (119, 8943), (123, 8949), (129, 8997), (139, 9117), (150, 9228), (153, 9249), (158, 9279),

Gene: ChickenPhender_28 Start: 8331, Stop: 9269, Start Num: 35

Candidate Starts for ChickenPhender_28:

(Start: 32 @8325 has 142 MA's), (Start: 35 @8331 has 21 MA's), (70, 8454), (82, 8493), (85, 8517), (95, 8670), (97, 8679), (103, 8715), (104, 8727), (113, 8820), (119, 8901), (123, 8907), (129, 8955), (139, 9075), (150, 9186), (153, 9207), (158, 9237),

Gene: Chomp_27 Start: 8861, Stop: 9805, Start Num: 32

Candidate Starts for Chomp_27:

(Start: 32 @8861 has 142 MA's), (Start: 35 @8867 has 21 MA's), (70, 8990), (82, 9029), (85, 9053), (95, 9206), (97, 9215), (103, 9251), (104, 9263), (113, 9356), (119, 9437), (123, 9443), (129, 9491), (139, 9611), (150, 9722), (153, 9743), (158, 9773),

Gene: CindyLou_29 Start: 8861, Stop: 9805, Start Num: 32

Candidate Starts for CindyLou_29:

(Start: 32 @8861 has 142 MA's), (Start: 35 @8867 has 21 MA's), (70, 8990), (82, 9029), (85, 9053), (95, 9206), (97, 9215), (103, 9251), (104, 9263), (113, 9356), (119, 9437), (123, 9443), (129, 9491), (139, 9611), (150, 9722), (153, 9743), (158, 9773),

Gene: Circinus_161 Start: 91155, Stop: 92039, Start Num: 25

Candidate Starts for Circinus_161:

(Start: 25 @91155 has 60 MA's), (Start: 33 @91179 has 5 MA's), (43, 91206), (58, 91236), (63, 91248), (79, 91293), (87, 91362), (109, 91596), (110, 91599), (114, 91629), (149, 91941), (150, 91944), (152, 91959),

Gene: Colt_22 Start: 7465, Stop: 8409, Start Num: 33

Candidate Starts for Colt_22:

(Start: 33 @7465 has 5 MA's), (Start: 35 @7471 has 21 MA's), (70, 7594), (82, 7633), (85, 7657), (95, 7810), (97, 7819), (103, 7855), (104, 7867), (113, 7960), (119, 8041), (123, 8047), (129, 8095), (146, 8299), (150, 8326), (153, 8347), (158, 8377),

Gene: Comrade_132 Start: 78438, Stop: 79400, Start Num: 14

Candidate Starts for Comrade_132:

(Start: 14 @78438 has 3 MA's), (16, 78447), (Start: 25 @78513 has 60 MA's), (68, 78633), (93, 78795), (100, 78873), (116, 79002), (122, 79038), (128, 79059), (142, 79239), (150, 79305), (159, 79368),

Gene: Concombre_28 Start: 9632, Stop: 10576, Start Num: 32

Candidate Starts for Concombre_28:

(Start: 32 @9632 has 142 MA's), (Start: 35 @9638 has 21 MA's), (70, 9761), (82, 9800), (85, 9824), (95, 9977), (97, 9986), (103, 10022), (104, 10034), (113, 10127), (119, 10208), (123, 10214), (129,

10262), (139, 10382), (150, 10493), (153, 10514), (158, 10544),

Gene: Cross_153 Start: 90427, Stop: 91296, Start Num: 25

Candidate Starts for Cross_153:

(17, 90373), (Start: 25 @90427 has 60 MA's), (39, 90469), (46, 90490), (47, 90493), (84, 90595), (120, 90934), (149, 91201),

Gene: Cursive_151 Start: 88636, Stop: 89505, Start Num: 25

Candidate Starts for Cursive_151:

(17, 88582), (Start: 25 @88636 has 60 MA's), (39, 88678), (46, 88699), (47, 88702), (84, 88804), (120, 89143), (149, 89410),

Gene: DTDevon_30 Start: 10025, Stop: 10969, Start Num: 32

Candidate Starts for DTDevon_30:

(Start: 32 @10025 has 142 MA's), (Start: 35 @10031 has 21 MA's), (70, 10154), (82, 10193), (85, 10217), (95, 10370), (97, 10379), (103, 10415), (104, 10427), (113, 10520), (119, 10601), (123, 10607), (129, 10655), (139, 10775), (150, 10886), (153, 10907), (158, 10937),

Gene: Daffodil_31 Start: 9406, Stop: 10350, Start Num: 32

Candidate Starts for Daffodil_31:

(Start: 32 @9406 has 142 MA's), (Start: 35 @9412 has 21 MA's), (70, 9535), (82, 9574), (85, 9598), (95, 9751), (97, 9760), (103, 9796), (104, 9808), (113, 9901), (119, 9982), (123, 9988), (129, 10036), (139, 10156), (150, 10267), (153, 10288), (158, 10318),

Gene: Dandelion_33 Start: 10721, Stop: 11665, Start Num: 33

Candidate Starts for Dandelion_33:

(Start: 33 @10721 has 5 MA's), (Start: 35 @10727 has 21 MA's), (70, 10850), (82, 10889), (85, 10913), (95, 11066), (97, 11075), (103, 11111), (104, 11123), (111, 11204), (113, 11216), (119, 11297), (123, 11303), (129, 11351), (139, 11471), (150, 11582), (153, 11603), (158, 11633),

Gene: Darko_28 Start: 9265, Stop: 10203, Start Num: 35

Candidate Starts for Darko_28:

(Start: 32 @9259 has 142 MA's), (Start: 35 @9265 has 21 MA's), (70, 9388), (82, 9427), (85, 9451), (95, 9604), (97, 9613), (103, 9649), (104, 9661), (113, 9754), (119, 9835), (123, 9841), (129, 9889), (139, 10009), (150, 10120), (153, 10141), (158, 10171),

Gene: Delilah_29 Start: 9406, Stop: 10350, Start Num: 32

Candidate Starts for Delilah_29:

(Start: 32 @9406 has 142 MA's), (Start: 35 @9412 has 21 MA's), (70, 9535), (82, 9574), (85, 9598), (95, 9751), (97, 9760), (103, 9796), (104, 9808), (113, 9901), (119, 9982), (123, 9988), (129, 10036), (139, 10156), (150, 10267), (153, 10288), (158, 10318),

Gene: Delylah_30 Start: 9186, Stop: 10130, Start Num: 32

Candidate Starts for Delylah_30:

(Start: 32 @9186 has 142 MA's), (Start: 35 @9192 has 21 MA's), (70, 9315), (82, 9354), (85, 9378), (95, 9531), (97, 9540), (103, 9576), (104, 9588), (113, 9681), (119, 9762), (123, 9768), (129, 9816), (139, 9936), (146, 10020), (150, 10047), (153, 10068), (158, 10098),

Gene: Derek_30 Start: 8818, Stop: 9762, Start Num: 32

Candidate Starts for Derek_30:

(Start: 32 @8818 has 142 MA's), (Start: 35 @8824 has 21 MA's), (70, 8947), (82, 8986), (85, 9010), (95, 9163), (97, 9172), (103, 9208), (104, 9220), (113, 9313), (119, 9394), (123, 9400), (129, 9448), (139, 9568), (150, 9679), (153, 9700), (158, 9730),

Gene: Dietrick_24 Start: 8053, Stop: 8997, Start Num: 32

Candidate Starts for Dietrick_24:

(Start: 32 @8053 has 142 MA's), (Start: 35 @8059 has 21 MA's), (70, 8182), (82, 8221), (85, 8245), (95, 8398), (97, 8407), (103, 8443), (104, 8455), (113, 8548), (119, 8629), (123, 8635), (129, 8683), (139, 8803), (150, 8914), (153, 8935), (158, 8965),

Gene: Diminimus_117 Start: 61708, Stop: 62607, Start Num: 24

Candidate Starts for Diminimus_117:

(22, 61702), (Start: 24 @61708 has 17 MA's), (Start: 27 @61720 has 2 MA's), (40, 61753), (51, 61789), (56, 61819), (59, 61825), (76, 61873), (84, 61912), (91, 61993), (92, 62002), (96, 62053), (108, 62161), (109, 62173), (122, 62254), (130, 62317), (133, 62332), (135, 62338), (139, 62413), (143, 62467), (144, 62479), (147, 62503), (151, 62527), (152, 62539), (157, 62575),

Gene: DirtMonster_28 Start: 9944, Stop: 10888, Start Num: 32

Candidate Starts for DirtMonster_28:

(Start: 32 @9944 has 142 MA's), (Start: 35 @9950 has 21 MA's), (70, 10073), (82, 10112), (85, 10136), (95, 10289), (97, 10298), (103, 10334), (104, 10346), (113, 10439), (119, 10520), (123, 10526), (129, 10574), (139, 10694), (150, 10805), (153, 10826), (158, 10856),

Gene: DrPhinkDaddy_29 Start: 9403, Stop: 10347, Start Num: 32

Candidate Starts for DrPhinkDaddy_29:

(Start: 32 @9403 has 142 MA's), (Start: 35 @9409 has 21 MA's), (70, 9532), (82, 9571), (85, 9595), (95, 9748), (97, 9757), (103, 9793), (104, 9805), (113, 9898), (119, 9979), (123, 9985), (129, 10033), (139, 10153), (150, 10264), (153, 10285), (158, 10315),

Gene: Drazdys_29 Start: 9191, Stop: 10135, Start Num: 32

Candidate Starts for Drazdys_29:

(Start: 32 @9191 has 142 MA's), (Start: 35 @9197 has 21 MA's), (70, 9320), (82, 9359), (85, 9383), (95, 9536), (97, 9545), (103, 9581), (104, 9593), (113, 9686), (119, 9767), (123, 9773), (129, 9821), (139, 9941), (150, 10052), (153, 10073), (158, 10103),

Gene: Dulcita_117 Start: 61709, Stop: 62608, Start Num: 24

Candidate Starts for Dulcita_117:

(22, 61703), (Start: 24 @61709 has 17 MA's), (Start: 27 @61721 has 2 MA's), (40, 61754), (51, 61790), (56, 61820), (59, 61826), (76, 61874), (84, 61913), (91, 61994), (92, 62003), (96, 62054), (108, 62162), (109, 62174), (122, 62255), (130, 62318), (133, 62333), (135, 62339), (139, 62414), (143, 62468), (144, 62480), (147, 62504), (151, 62528), (152, 62540), (157, 62576),

Gene: EGole_155 Start: 91705, Stop: 92574, Start Num: 25

Candidate Starts for EGole_155:

(17, 91645), (Start: 25 @91705 has 60 MA's), (74, 91828), (99, 92047), (105, 92086), (152, 92497),

Gene: ET08_24 Start: 8862, Stop: 9806, Start Num: 32

Candidate Starts for ET08_24:

(Start: 32 @8862 has 142 MA's), (Start: 35 @8868 has 21 MA's), (70, 8991), (82, 9030), (85, 9054), (95, 9207), (97, 9216), (103, 9252), (104, 9264), (113, 9357), (119, 9438), (123, 9444), (129, 9492), (139, 9612), (146, 9696), (150, 9723), (153, 9744), (158, 9774),

Gene: EasyJones_28 Start: 8030, Stop: 8974, Start Num: 32

Candidate Starts for EasyJones_28:

(Start: 32 @8030 has 142 MA's), (Start: 35 @8036 has 21 MA's), (70, 8159), (82, 8198), (85, 8222), (95, 8375), (97, 8384), (103, 8420), (104, 8432), (113, 8525), (119, 8606), (123, 8612), (129, 8660),

(139, 8780), (150, 8891), (153, 8912), (158, 8942),

Gene: EggyFarm_33 Start: 10386, Stop: 11330, Start Num: 32

Candidate Starts for EggyFarm_33:

(Start: 32 @10386 has 142 MA's), (Start: 35 @10392 has 21 MA's), (70, 10515), (82, 10554), (85, 10578), (95, 10731), (97, 10740), (103, 10776), (104, 10788), (113, 10881), (119, 10962), (123, 10968), (129, 11016), (139, 11136), (150, 11247), (153, 11268), (158, 11298),

Gene: Elmer_174 Start: 92742, Stop: 93611, Start Num: 25

Candidate Starts for Elmer_174:

(Start: 25 @92742 has 60 MA's), (34, 92769), (Start: 35 @92772 has 21 MA's), (115, 93213), (127, 93267), (147, 93498), (149, 93516), (150, 93519),

Gene: EmToTheThree_32 Start: 10820, Stop: 11764, Start Num: 32

Candidate Starts for EmToTheThree_32:

(Start: 32 @10820 has 142 MA's), (Start: 35 @10826 has 21 MA's), (70, 10949), (82, 10988), (85, 11012), (95, 11165), (97, 11174), (103, 11210), (104, 11222), (113, 11315), (119, 11396), (123, 11402), (129, 11450), (139, 11570), (146, 11654), (150, 11681), (153, 11702), (158, 11732),

Gene: Emma1919_138 Start: 78385, Stop: 79266, Start Num: 25

Candidate Starts for Emma1919_138:

(Start: 25 @78385 has 60 MA's), (68, 78505), (81, 78544), (96, 78715), (100, 78745), (101, 78748), (128, 78931), (150, 79177),

Gene: EmmaElysia_27 Start: 8045, Stop: 8989, Start Num: 32

Candidate Starts for EmmaElysia_27:

(Start: 32 @8045 has 142 MA's), (Start: 35 @8051 has 21 MA's), (70, 8174), (82, 8213), (85, 8237), (95, 8390), (97, 8399), (103, 8435), (104, 8447), (113, 8540), (119, 8621), (123, 8627), (129, 8675), (139, 8795), (150, 8906), (153, 8927), (158, 8957),

Gene: Enygma_164 Start: 91572, Stop: 92441, Start Num: 25

Candidate Starts for Enygma_164:

(Start: 25 @91572 has 60 MA's), (31, 91593), (57, 91665), (72, 91689), (115, 92043), (150, 92349),

Gene: Erdmann_30 Start: 9406, Stop: 10350, Start Num: 32

Candidate Starts for Erdmann_30:

(Start: 32 @9406 has 142 MA's), (Start: 35 @9412 has 21 MA's), (70, 9535), (82, 9574), (85, 9598), (95, 9751), (97, 9760), (103, 9796), (104, 9808), (113, 9901), (119, 9982), (123, 9988), (129, 10036), (139, 10156), (150, 10267), (153, 10288), (158, 10318),

Gene: ErnieJ_30 Start: 9226, Stop: 10170, Start Num: 32

Candidate Starts for ErnieJ_30:

(Start: 32 @9226 has 142 MA's), (Start: 35 @9232 has 21 MA's), (70, 9355), (82, 9394), (85, 9418), (95, 9571), (97, 9580), (103, 9616), (104, 9628), (113, 9721), (119, 9802), (123, 9808), (129, 9856), (139, 9976), (150, 10087), (153, 10108), (158, 10138),

Gene: Essence_28 Start: 8580, Stop: 9524, Start Num: 32

Candidate Starts for Essence_28:

(Start: 32 @8580 has 142 MA's), (Start: 35 @8586 has 21 MA's), (70, 8709), (82, 8748), (85, 8772), (95, 8925), (97, 8934), (103, 8970), (104, 8982), (113, 9075), (119, 9156), (123, 9162), (129, 9210), (139, 9330), (150, 9441), (153, 9462), (158, 9492),

Gene: Ewok_29 Start: 9409, Stop: 10353, Start Num: 32

Candidate Starts for Ewok_29:

(Start: 32 @9409 has 142 MA's), (Start: 35 @9415 has 21 MA's), (70, 9538), (82, 9577), (85, 9601), (95, 9754), (97, 9763), (103, 9799), (104, 9811), (113, 9904), (119, 9985), (123, 9991), (129, 10039), (139, 10159), (150, 10270), (153, 10291), (158, 10321),

Gene: Faust_131 Start: 79319, Stop: 80239, Start Num: 25

Candidate Starts for Faust_131:

(23, 79313), (Start: 25 @79319 has 60 MA's), (55, 79430), (74, 79481), (75, 79484), (79, 79496), (110, 79799), (114, 79829), (116, 79835), (131, 79937), (149, 80141), (150, 80144), (152, 80159),

Gene: Flabslab_30 Start: 9336, Stop: 10280, Start Num: 32

Candidate Starts for Flabslab_30:

(Start: 32 @9336 has 142 MA's), (Start: 35 @9342 has 21 MA's), (70, 9465), (82, 9504), (85, 9528), (95, 9681), (97, 9690), (103, 9726), (104, 9738), (113, 9831), (119, 9912), (123, 9918), (129, 9966), (139, 10086), (146, 10170), (150, 10197), (153, 10218), (158, 10248),

Gene: Fludd_28 Start: 8287, Stop: 9225, Start Num: 35

Candidate Starts for Fludd_28:

(Start: 32 @8281 has 142 MA's), (Start: 35 @8287 has 21 MA's), (70, 8410), (82, 8449), (85, 8473), (95, 8626), (97, 8635), (103, 8671), (104, 8683), (113, 8776), (119, 8857), (123, 8863), (129, 8911), (139, 9031), (150, 9142), (153, 9163), (158, 9193),

Gene: Forza_125 Start: 79874, Stop: 79014, Start Num: 36

Candidate Starts for Forza_125:

(Start: 27 @79898 has 2 MA's), (Start: 36 @79874 has 3 MA's), (50, 79835), (66, 79769), (80, 79727), (82, 79718), (106, 79484), (107, 79478), (126, 79343), (129, 79319), (133, 79280), (144, 79133), (154, 79067),

Gene: FoxtrotP1_29 Start: 9734, Stop: 10678, Start Num: 32

Candidate Starts for FoxtrotP1_29:

(Start: 32 @9734 has 142 MA's), (Start: 35 @9740 has 21 MA's), (70, 9863), (82, 9902), (85, 9926), (95, 10079), (97, 10088), (103, 10124), (104, 10136), (113, 10229), (119, 10310), (123, 10316), (126, 10340), (129, 10364), (139, 10484), (150, 10595), (153, 10616), (158, 10646),

Gene: Francob_135 Start: 78579, Stop: 79463, Start Num: 25

Candidate Starts for Francob_135:

(Start: 25 @78579 has 60 MA's), (65, 78687), (68, 78699), (81, 78738), (90, 78822), (101, 78942), (110, 79032), (116, 79068), (118, 79098), (150, 79371),

Gene: FrayBell_35 Start: 10974, Stop: 11918, Start Num: 32

Candidate Starts for FrayBell_35:

(Start: 32 @10974 has 142 MA's), (Start: 35 @10980 has 21 MA's), (70, 11103), (82, 11142), (85, 11166), (95, 11319), (97, 11328), (103, 11364), (104, 11376), (113, 11469), (119, 11550), (123, 11556), (129, 11604), (139, 11724), (150, 11835), (153, 11856), (158, 11886),

Gene: FudgeTart_30 Start: 9412, Stop: 10350, Start Num: 35

Candidate Starts for FudgeTart_30:

(Start: 32 @9406 has 142 MA's), (Start: 35 @9412 has 21 MA's), (70, 9535), (82, 9574), (85, 9598), (95, 9751), (97, 9760), (103, 9796), (104, 9808), (113, 9901), (119, 9982), (123, 9988), (129, 10036), (139, 10156), (150, 10267), (153, 10288), (158, 10318),

Gene: Gabriel_29 Start: 8280, Stop: 9224, Start Num: 32

Candidate Starts for Gabriel_29:

(Start: 32 @8280 has 142 MA's), (Start: 35 @8286 has 21 MA's), (70, 8409), (82, 8448), (85, 8472), (95, 8625), (97, 8634), (103, 8670), (104, 8682), (113, 8775), (119, 8856), (123, 8862), (129, 8910), (139, 9030), (150, 9141), (153, 9162), (158, 9192),

Gene: Gamgam_29 Start: 8867, Stop: 9805, Start Num: 35

Candidate Starts for Gamgam_29:

(Start: 32 @8861 has 142 MA's), (Start: 35 @8867 has 21 MA's), (70, 8990), (82, 9029), (85, 9053), (95, 9206), (97, 9215), (103, 9251), (104, 9263), (113, 9356), (119, 9437), (123, 9443), (129, 9491), (139, 9611), (150, 9722), (153, 9743), (158, 9773),

Gene: Genie2_160 Start: 89912, Stop: 90781, Start Num: 25

Candidate Starts for Genie2_160:

(Start: 25 @89912 has 60 MA's), (57, 90005), (70, 90023), (71, 90026), (99, 90254), (111, 90362), (115, 90383), (145, 90650), (147, 90668), (149, 90686), (150, 90689),

Gene: Ghost_29 Start: 8861, Stop: 9805, Start Num: 32

Candidate Starts for Ghost_29:

(Start: 32 @8861 has 142 MA's), (Start: 35 @8867 has 21 MA's), (70, 8990), (82, 9029), (85, 9053), (95, 9206), (97, 9215), (103, 9251), (104, 9263), (113, 9356), (119, 9437), (123, 9443), (129, 9491), (139, 9611), (150, 9722), (153, 9743), (158, 9773),

Gene: Gibbi_170 Start: 89975, Stop: 90841, Start Num: 25

Candidate Starts for Gibbi_170:

(Start: 25 @89975 has 60 MA's), (31, 89996), (57, 90068), (71, 90089), (84, 90143), (111, 90425), (115, 90446), (150, 90752), (160, 90812),

Gene: Gilson_138 Start: 78347, Stop: 79228, Start Num: 25

Candidate Starts for Gilson_138:

(Start: 25 @78347 has 60 MA's), (68, 78467), (81, 78506), (96, 78677), (100, 78707), (101, 78710), (128, 78893), (150, 79139),

Gene: Gizmo_31 Start: 9408, Stop: 10352, Start Num: 32

Candidate Starts for Gizmo_31:

(Start: 32 @9408 has 142 MA's), (Start: 35 @9414 has 21 MA's), (70, 9537), (82, 9576), (85, 9600), (95, 9753), (97, 9762), (103, 9798), (104, 9810), (113, 9903), (119, 9984), (123, 9990), (129, 10038), (139, 10158), (150, 10269), (153, 10290), (158, 10320),

Gene: Glaske16_119 Start: 62826, Stop: 63725, Start Num: 24

Candidate Starts for Glaske16_119:

(22, 62820), (Start: 24 @62826 has 17 MA's), (Start: 27 @62838 has 2 MA's), (40, 62871), (51, 62907), (56, 62937), (59, 62943), (76, 62991), (84, 63030), (91, 63111), (92, 63120), (96, 63171), (108, 63279), (109, 63291), (122, 63372), (130, 63435), (133, 63450), (135, 63456), (139, 63531), (144, 63597), (147, 63621), (152, 63657), (157, 63693),

Gene: Grasshills_33 Start: 10386, Stop: 11330, Start Num: 32

Candidate Starts for Grasshills_33:

(Start: 32 @10386 has 142 MA's), (Start: 35 @10392 has 21 MA's), (70, 10515), (82, 10554), (85, 10578), (95, 10731), (97, 10740), (103, 10776), (104, 10788), (113, 10881), (119, 10962), (123, 10968), (129, 11016), (139, 11136), (150, 11247), (153, 11268), (158, 11298),

Gene: Grayson_141 Start: 80240, Stop: 81109, Start Num: 28

Candidate Starts for Grayson_141:

(16, 80162), (Start: 28 @80240 has 4 MA's), (87, 80477), (98, 80585), (106, 80642), (121, 80771), (148, 81032),

Gene: Grungle_22 Start: 6977, Stop: 7921, Start Num: 32

Candidate Starts for Grungle_22:

(Start: 32 @6977 has 142 MA's), (Start: 35 @6983 has 21 MA's), (70, 7106), (82, 7145), (85, 7169), (95, 7322), (97, 7331), (103, 7367), (104, 7379), (113, 7472), (119, 7553), (123, 7559), (129, 7607), (139, 7727), (150, 7838), (153, 7859), (158, 7889),

Gene: Guwapp_29 Start: 8818, Stop: 9762, Start Num: 32

Candidate Starts for Guwapp_29:

(Start: 32 @8818 has 142 MA's), (Start: 35 @8824 has 21 MA's), (70, 8947), (82, 8986), (85, 9010), (95, 9163), (97, 9172), (103, 9208), (104, 9220), (113, 9313), (119, 9394), (123, 9400), (129, 9448), (139, 9568), (150, 9679), (153, 9700), (158, 9730),

Gene: HangryHippo_155 Start: 90426, Stop: 91295, Start Num: 25

Candidate Starts for HangryHippo_155:

(17, 90372), (Start: 25 @90426 has 60 MA's), (39, 90468), (46, 90489), (47, 90492), (84, 90594), (120, 90933), (149, 91200),

Gene: HyRo_28 Start: 9593, Stop: 10537, Start Num: 32

Candidate Starts for HyRo_28:

(Start: 32 @9593 has 142 MA's), (Start: 35 @9599 has 21 MA's), (70, 9722), (82, 9761), (85, 9785), (95, 9938), (97, 9947), (103, 9983), (104, 9995), (113, 10088), (119, 10169), (123, 10175), (129, 10223), (139, 10343), (146, 10427), (150, 10454), (153, 10475), (158, 10505),

Gene: I3_31 Start: 9973, Stop: 10917, Start Num: 32

Candidate Starts for I3_31:

(Start: 32 @9973 has 142 MA's), (Start: 35 @9979 has 21 MA's), (70, 10102), (82, 10141), (85, 10165), (95, 10318), (97, 10327), (103, 10363), (104, 10375), (113, 10468), (119, 10549), (123, 10555), (129, 10603), (139, 10723), (150, 10834), (153, 10855), (158, 10885),

Gene: IPhane7_114 Start: 61713, Stop: 62612, Start Num: 24

Candidate Starts for IPhane7_114:

(22, 61707), (Start: 24 @61713 has 17 MA's), (Start: 27 @61725 has 2 MA's), (40, 61758), (51, 61794), (56, 61824), (59, 61830), (76, 61878), (84, 61917), (91, 61998), (92, 62007), (96, 62058), (108, 62166), (109, 62178), (122, 62259), (130, 62322), (133, 62337), (135, 62343), (139, 62418), (143, 62472), (144, 62484), (147, 62508), (151, 62532), (152, 62544), (157, 62580),

Gene: IchabodCrane_157 Start: 89106, Stop: 89972, Start Num: 25

Candidate Starts for IchabodCrane_157:

(Start: 25 @89106 has 60 MA's), (31, 89127), (57, 89199), (71, 89220), (84, 89274), (111, 89556), (115, 89577), (150, 89883), (160, 89943),

Gene: IkeLoa_25 Start: 8704, Stop: 9648, Start Num: 32

Candidate Starts for IkeLoa_25:

(Start: 32 @8704 has 142 MA's), (Start: 35 @8710 has 21 MA's), (70, 8833), (82, 8872), (85, 8896), (95, 9049), (97, 9058), (103, 9094), (104, 9106), (113, 9199), (119, 9280), (123, 9286), (129, 9334), (139, 9454), (150, 9565), (153, 9586), (158, 9616),

Gene: Indlulamithi_79 Start: 56823, Stop: 57701, Start Num: 35

Candidate Starts for Indlulamithi_79:

(Start: 35 @56823 has 21 MA's), (41, 56841), (50, 56865), (61, 56913), (62, 56916), (86, 57000), (90, 57054), (92, 57081), (97, 57138), (99, 57159), (102, 57168), (106, 57210), (108, 57240), (117, 57294), (129, 57384), (141, 57543), (143, 57558), (148, 57606), (150, 57615),

Gene: InigoMontoya_30 Start: 8822, Stop: 9766, Start Num: 32

Candidate Starts for InigoMontoya_30:

(Start: 32 @8822 has 142 MA's), (Start: 35 @8828 has 21 MA's), (70, 8951), (82, 8990), (85, 9014), (95, 9167), (97, 9176), (103, 9212), (104, 9224), (113, 9317), (119, 9398), (123, 9404), (129, 9452), (139, 9572), (150, 9683), (153, 9704), (158, 9734),

Gene: InterFolia_36 Start: 11512, Stop: 12456, Start Num: 32

Candidate Starts for InterFolia_36:

(Start: 32 @11512 has 142 MA's), (Start: 35 @11518 has 21 MA's), (70, 11641), (82, 11680), (85, 11704), (95, 11857), (97, 11866), (103, 11902), (104, 11914), (113, 12007), (119, 12088), (123, 12094), (129, 12142), (139, 12262), (150, 12373), (153, 12394), (158, 12424),

Gene: Iota_26 Start: 8941, Stop: 9885, Start Num: 32

Candidate Starts for Iota_26:

(Start: 32 @8941 has 142 MA's), (Start: 35 @8947 has 21 MA's), (70, 9070), (82, 9109), (85, 9133), (95, 9286), (97, 9295), (103, 9331), (104, 9343), (113, 9436), (119, 9517), (123, 9523), (129, 9571), (139, 9691), (146, 9775), (150, 9802), (153, 9823), (158, 9853),

Gene: Issimir_28 Start: 9401, Stop: 10345, Start Num: 32

Candidate Starts for Issimir_28:

(Start: 32 @9401 has 142 MA's), (Start: 35 @9407 has 21 MA's), (70, 9530), (82, 9569), (85, 9593), (95, 9746), (97, 9755), (103, 9791), (104, 9803), (113, 9896), (119, 9977), (123, 9983), (129, 10031), (139, 10151), (146, 10235), (150, 10262), (153, 10283), (158, 10313),

Gene: Izajani_30 Start: 9406, Stop: 10350, Start Num: 32

Candidate Starts for Izajani_30:

(Start: 32 @9406 has 142 MA's), (Start: 35 @9412 has 21 MA's), (70, 9535), (82, 9574), (85, 9598), (95, 9751), (97, 9760), (103, 9796), (104, 9808), (113, 9901), (119, 9982), (123, 9988), (129, 10036), (139, 10156), (150, 10267), (153, 10288), (158, 10318),

Gene: JPickles_27 Start: 8055, Stop: 8999, Start Num: 32

Candidate Starts for JPickles_27:

(Start: 32 @8055 has 142 MA's), (Start: 35 @8061 has 21 MA's), (70, 8184), (82, 8223), (85, 8247), (95, 8400), (97, 8409), (103, 8445), (104, 8457), (113, 8550), (119, 8631), (123, 8637), (129, 8685), (139, 8805), (150, 8916), (153, 8937), (158, 8967),

Gene: Janiyra_29 Start: 8840, Stop: 9784, Start Num: 32

Candidate Starts for Janiyra_29:

(Start: 32 @8840 has 142 MA's), (Start: 35 @8846 has 21 MA's), (70, 8969), (82, 9008), (85, 9032), (95, 9185), (97, 9194), (103, 9230), (104, 9242), (113, 9335), (119, 9416), (123, 9422), (129, 9470), (139, 9590), (150, 9701), (153, 9722), (158, 9752),

Gene: JayJay_30 Start: 9377, Stop: 10315, Start Num: 35

Candidate Starts for JayJay_30:

(Start: 32 @9371 has 142 MA's), (Start: 35 @9377 has 21 MA's), (70, 9500), (82, 9539), (85, 9563), (95, 9716), (97, 9725), (103, 9761), (104, 9773), (113, 9866), (119, 9947), (123, 9953), (129, 10001), (139, 10121), (150, 10232), (153, 10253), (158, 10283),

Gene: Jaygup_29 Start: 8857, Stop: 9801, Start Num: 32

Candidate Starts for Jaygup_29:

(Start: 32 @8857 has 142 MA's), (Start: 35 @8863 has 21 MA's), (70, 8986), (82, 9025), (85, 9049), (95, 9202), (97, 9211), (103, 9247), (104, 9259), (113, 9352), (119, 9433), (123, 9439), (129, 9487), (139, 9607), (150, 9718), (153, 9739), (158, 9769),

Gene: Jedediah_29 Start: 8326, Stop: 9270, Start Num: 32

Candidate Starts for Jedediah_29:

(Start: 32 @8326 has 142 MA's), (Start: 35 @8332 has 21 MA's), (70, 8455), (82, 8494), (85, 8518), (95, 8671), (97, 8680), (103, 8716), (104, 8728), (113, 8821), (119, 8902), (123, 8908), (129, 8956), (139, 9076), (150, 9187), (153, 9208), (158, 9238),

Gene: Jemmno_29 Start: 8861, Stop: 9805, Start Num: 32

Candidate Starts for Jemmno_29:

(Start: 32 @8861 has 142 MA's), (Start: 35 @8867 has 21 MA's), (70, 8990), (82, 9029), (85, 9053), (95, 9206), (97, 9215), (103, 9251), (104, 9263), (113, 9356), (119, 9437), (123, 9443), (129, 9491), (139, 9611), (150, 9722), (153, 9743), (158, 9773),

Gene: Jessibeth14_28 Start: 9132, Stop: 10070, Start Num: 35

Candidate Starts for Jessibeth14_28:

(Start: 32 @9126 has 142 MA's), (Start: 35 @9132 has 21 MA's), (70, 9255), (82, 9294), (85, 9318), (95, 9471), (97, 9480), (103, 9516), (104, 9528), (113, 9621), (119, 9702), (123, 9708), (129, 9756), (139, 9876), (150, 9987), (153, 10008), (158, 10038),

Gene: JimJam_168 Start: 90741, Stop: 91607, Start Num: 25

Candidate Starts for JimJam_168:

(Start: 25 @90741 has 60 MA's), (31, 90762), (57, 90834), (71, 90855), (84, 90909), (111, 91191), (115, 91212), (150, 91518), (160, 91578),

Gene: Jollison_168 Start: 89819, Stop: 90685, Start Num: 25

Candidate Starts for Jollison_168:

(Start: 25 @89819 has 60 MA's), (31, 89840), (57, 89912), (71, 89933), (84, 89987), (111, 90269), (115, 90290), (150, 90596), (160, 90656),

Gene: JulietS_24 Start: 7286, Stop: 8224, Start Num: 35

Candidate Starts for JulietS_24:

(Start: 32 @7280 has 142 MA's), (Start: 35 @7286 has 21 MA's), (70, 7409), (82, 7448), (85, 7472), (95, 7625), (97, 7634), (103, 7670), (104, 7682), (113, 7775), (119, 7856), (123, 7862), (129, 7910), (139, 8030), (150, 8141), (153, 8162), (158, 8192),

Gene: JustHall_28 Start: 9306, Stop: 10250, Start Num: 32

Candidate Starts for JustHall_28:

(Start: 32 @9306 has 142 MA's), (Start: 35 @9312 has 21 MA's), (70, 9435), (82, 9474), (85, 9498), (95, 9651), (97, 9660), (103, 9696), (104, 9708), (113, 9801), (119, 9882), (123, 9888), (129, 9936), (139, 10056), (150, 10167), (153, 10188), (158, 10218),

Gene: Kamryn_29 Start: 9179, Stop: 10123, Start Num: 32

Candidate Starts for Kamryn_29:

(Start: 32 @9179 has 142 MA's), (Start: 35 @9185 has 21 MA's), (70, 9308), (82, 9347), (85, 9371), (95, 9524), (97, 9533), (103, 9569), (104, 9581), (113, 9674), (119, 9755), (123, 9761), (129, 9809), (139, 9929), (150, 10040), (153, 10061), (158, 10091),

Gene: Karimac_161 Start: 89643, Stop: 90509, Start Num: 25

Candidate Starts for Karimac_161:

(Start: 25 @89643 has 60 MA's), (31, 89664), (57, 89736), (71, 89757), (111, 90093), (115, 90114), (150, 90420),

Gene: Karp_132 Start: 78621, Stop: 79508, Start Num: 25

Candidate Starts for Karp_132:

(Start: 14 @78546 has 3 MA's), (16, 78555), (Start: 25 @78621 has 60 MA's), (68, 78741), (93, 78903), (100, 78981), (116, 79110), (122, 79146), (128, 79167), (142, 79347), (150, 79413), (159, 79476),

Gene: Kboogie_29 Start: 8336, Stop: 9280, Start Num: 32

Candidate Starts for Kboogie_29:

(Start: 32 @8336 has 142 MA's), (Start: 35 @8342 has 21 MA's), (70, 8465), (82, 8504), (85, 8528), (95, 8681), (97, 8690), (103, 8726), (104, 8738), (113, 8831), (119, 8912), (123, 8918), (129, 8966), (139, 9086), (150, 9197), (153, 9218), (158, 9248),

Gene: Kenrey_141 Start: 79879, Stop: 80760, Start Num: 25

Candidate Starts for Kenrey_141:

(Start: 25 @79879 has 60 MA's), (68, 79999), (81, 80038), (96, 80209), (100, 80239), (101, 80242), (116, 80368), (128, 80425), (150, 80671),

Gene: KentuckyRacer_171 Start: 90756, Stop: 91622, Start Num: 25

Candidate Starts for KentuckyRacer_171:

(Start: 25 @90756 has 60 MA's), (31, 90777), (57, 90849), (71, 90870), (84, 90924), (111, 91206), (115, 91227), (150, 91533), (160, 91593),

Gene: Khaleesi_28 Start: 9153, Stop: 10097, Start Num: 32

Candidate Starts for Khaleesi_28:

(Start: 32 @9153 has 142 MA's), (Start: 35 @9159 has 21 MA's), (70, 9282), (82, 9321), (85, 9345), (95, 9498), (97, 9507), (103, 9543), (104, 9555), (113, 9648), (119, 9729), (123, 9735), (129, 9783), (139, 9903), (150, 10014), (153, 10035), (158, 10065),

Gene: Koguma_25 Start: 7623, Stop: 8567, Start Num: 32

Candidate Starts for Koguma_25:

(Start: 32 @7623 has 142 MA's), (Start: 35 @7629 has 21 MA's), (70, 7752), (82, 7791), (85, 7815), (95, 7968), (97, 7977), (103, 8013), (104, 8025), (113, 8118), (119, 8199), (123, 8205), (129, 8253), (139, 8373), (150, 8484), (153, 8505), (158, 8535),

Gene: Kudrefre_53 Start: 36597, Stop: 37475, Start Num: 24

Candidate Starts for Kudrefre_53:

(Start: 24 @36597 has 17 MA's), (37, 36633), (42, 36648), (45, 36657), (86, 36801), (92, 36882), (97, 36939), (98, 36954), (103, 36975), (115, 37089), (116, 37092), (129, 37176), (132, 37209), (133, 37215), (134, 37218), (140, 37302),

Gene: LRRHood_26 Start: 9546, Stop: 10490, Start Num: 32

Candidate Starts for LRRHood_26:

(Start: 32 @9546 has 142 MA's), (Start: 35 @9552 has 21 MA's), (70, 9675), (82, 9714), (85, 9738), (95, 9891), (97, 9900), (103, 9936), (104, 9948), (113, 10041), (119, 10122), (123, 10128), (129, 10176), (139, 10296), (150, 10407), (153, 10428), (158, 10458),

Gene: Larnav_160 Start: 90401, Stop: 91270, Start Num: 25

Candidate Starts for Larnav_160:

(17, 90347), (Start: 25 @90401 has 60 MA's), (39, 90443), (46, 90464), (47, 90467), (84, 90569), (88, 90620), (120, 90908), (149, 91175),

Gene: Latch_29 Start: 8861, Stop: 9805, Start Num: 32

Candidate Starts for Latch_29:

(Start: 32 @8861 has 142 MA's), (Start: 35 @8867 has 21 MA's), (70, 8990), (82, 9029), (85, 9053), (95, 9206), (97, 9215), (103, 9251), (104, 9263), (113, 9356), (119, 9437), (123, 9443), (129, 9491), (139, 9611), (150, 9722), (153, 9743), (158, 9773),

Gene: Lee7_28 Start: 9403, Stop: 10347, Start Num: 32

Candidate Starts for Lee7_28:

(Start: 32 @9403 has 142 MA's), (Start: 35 @9409 has 21 MA's), (70, 9532), (82, 9571), (85, 9595), (95, 9748), (97, 9757), (103, 9793), (104, 9805), (113, 9898), (119, 9979), (123, 9985), (129, 10033), (139, 10153), (150, 10264), (153, 10285), (158, 10315),

Gene: Leo04_154 Start: 90926, Stop: 91795, Start Num: 25

Candidate Starts for Leo04_154:

(17, 90872), (Start: 25 @90926 has 60 MA's), (39, 90968), (46, 90989), (47, 90992), (120, 91433), (149, 91700),

Gene: Liandry_152 Start: 89108, Stop: 89977, Start Num: 25

Candidate Starts for Liandry_152:

(17, 89048), (Start: 25 @89108 has 60 MA's), (74, 89231), (99, 89450), (105, 89489), (126, 89627), (152, 89900),

Gene: LifeSavor_30 Start: 8857, Stop: 9801, Start Num: 32

Candidate Starts for LifeSavor_30:

(Start: 32 @8857 has 142 MA's), (Start: 35 @8863 has 21 MA's), (70, 8986), (82, 9025), (85, 9049), (95, 9202), (97, 9211), (103, 9247), (104, 9259), (113, 9352), (119, 9433), (123, 9439), (129, 9487), (139, 9607), (150, 9718), (153, 9739), (158, 9769),

Gene: LilMartin_151 Start: 88285, Stop: 89160, Start Num: 25

Candidate Starts for LilMartin_151:

(Start: 25 @88285 has 60 MA's), (29, 88300), (37, 88321), (79, 88423), (83, 88438), (93, 88552), (100, 88630), (126, 88807), (128, 88819), (150, 89065),

Gene: LilhomieP_116 Start: 62991, Stop: 63890, Start Num: 24

Candidate Starts for LilhomieP_116:

(22, 62985), (Start: 24 @62991 has 17 MA's), (Start: 27 @63003 has 2 MA's), (40, 63036), (51, 63072), (56, 63102), (59, 63108), (76, 63156), (84, 63195), (91, 63276), (92, 63285), (96, 63336), (108, 63444), (109, 63456), (122, 63537), (130, 63600), (133, 63615), (135, 63621), (139, 63696), (144, 63762), (147, 63786), (152, 63822), (157, 63858),

Gene: LinStu_29 Start: 9756, Stop: 10700, Start Num: 32

Candidate Starts for LinStu_29:

(Start: 32 @9756 has 142 MA's), (Start: 35 @9762 has 21 MA's), (70, 9885), (82, 9924), (85, 9948), (95, 10101), (97, 10110), (103, 10146), (104, 10158), (113, 10251), (119, 10332), (123, 10338), (129, 10386), (139, 10506), (150, 10617), (153, 10638), (158, 10668),

Gene: Littleton_29 Start: 8861, Stop: 9805, Start Num: 32

Candidate Starts for Littleton_29:

(Start: 32 @8861 has 142 MA's), (Start: 35 @8867 has 21 MA's), (70, 8990), (82, 9029), (85, 9053), (95, 9206), (97, 9215), (103, 9251), (104, 9263), (113, 9356), (119, 9437), (123, 9443), (129, 9491), (139, 9611), (150, 9722), (153, 9743), (158, 9773),

Gene: Loanshark_29 Start: 9406, Stop: 10350, Start Num: 32

Candidate Starts for Loanshark_29:

(Start: 32 @9406 has 142 MA's), (Start: 35 @9412 has 21 MA's), (70, 9535), (82, 9574), (85, 9598), (95, 9751), (97, 9760), (103, 9796), (104, 9808), (113, 9901), (119, 9982), (123, 9988), (129, 10036), (139, 10156), (146, 10240), (150, 10267), (153, 10288), (158, 10318),

Gene: LolaVinca_32 Start: 10618, Stop: 11562, Start Num: 32

Candidate Starts for LolaVinca_32:

(Start: 32 @10618 has 142 MA's), (Start: 35 @10624 has 21 MA's), (70, 10747), (82, 10786), (85, 10810), (95, 10963), (97, 10972), (103, 11008), (104, 11020), (113, 11113), (119, 11194), (123, 11200), (129, 11248), (139, 11368), (150, 11479), (153, 11500), (158, 11530),

Gene: LordLeafolot_34 Start: 10979, Stop: 11917, Start Num: 35

Candidate Starts for LordLeafolot_34:

(Start: 32 @10973 has 142 MA's), (Start: 35 @10979 has 21 MA's), (70, 11102), (82, 11141), (85, 11165), (95, 11318), (97, 11327), (103, 11363), (104, 11375), (113, 11468), (119, 11549), (123, 11555), (129, 11603), (139, 11723), (150, 11834), (153, 11855), (158, 11885),

Gene: LukeCage_162 Start: 90692, Stop: 91561, Start Num: 25

Candidate Starts for LukeCage_162:

(Start: 25 @90692 has 60 MA's), (34, 90719), (Start: 35 @90722 has 21 MA's), (71, 90806), (110, 91130), (115, 91163), (142, 91403), (149, 91466), (150, 91469),

Gene: Lukilu_22 Start: 7997, Stop: 8941, Start Num: 32

Candidate Starts for Lukilu_22:

(Start: 32 @7997 has 142 MA's), (Start: 35 @8003 has 21 MA's), (70, 8126), (82, 8165), (85, 8189), (95, 8342), (97, 8351), (103, 8387), (104, 8399), (113, 8492), (119, 8573), (123, 8579), (129, 8627), (139, 8747), (150, 8858), (153, 8879), (158, 8909),

Gene: Lululemon_154 Start: 89807, Stop: 90676, Start Num: 25

Candidate Starts for Lululemon_154:

(17, 89753), (Start: 25 @89807 has 60 MA's), (39, 89849), (46, 89870), (47, 89873), (84, 89975), (120, 90314), (149, 90581),

Gene: Maby2021_30 Start: 9406, Stop: 10350, Start Num: 32

Candidate Starts for Maby2021_30:

(Start: 32 @9406 has 142 MA's), (Start: 35 @9412 has 21 MA's), (70, 9535), (82, 9574), (85, 9598), (95, 9751), (97, 9760), (103, 9796), (104, 9808), (113, 9901), (119, 9982), (123, 9988), (129, 10036), (139, 10156), (150, 10267), (153, 10288), (158, 10318),

Gene: Mangeria_32 Start: 9935, Stop: 10873, Start Num: 35

Candidate Starts for Mangeria_32:

(Start: 32 @9929 has 142 MA's), (Start: 35 @9935 has 21 MA's), (70, 10058), (82, 10097), (85, 10121), (95, 10274), (97, 10283), (103, 10319), (104, 10331), (113, 10424), (119, 10505), (123, 10511), (129, 10559), (139, 10679), (150, 10790), (153, 10811), (158, 10841),

Gene: Mareelih_123 Start: 79376, Stop: 78516, Start Num: 36

Candidate Starts for Mareelih_123:

(Start: 27 @79400 has 2 MA's), (Start: 36 @79376 has 3 MA's), (50, 79337), (66, 79271), (80, 79229), (82, 79220), (106, 78986), (107, 78980), (126, 78845), (129, 78821), (133, 78782), (144, 78635), (154, 78569),

Gene: Matsumoto_28 Start: 8828, Stop: 9766, Start Num: 35

Candidate Starts for Matsumoto_28:

(Start: 32 @8822 has 142 MA's), (Start: 35 @8828 has 21 MA's), (70, 8951), (82, 8990), (85, 9014), (95, 9167), (97, 9176), (103, 9212), (104, 9224), (113, 9317), (119, 9398), (123, 9404), (129, 9452), (139, 9572), (150, 9683), (153, 9704), (158, 9734),

Gene: McGee_28 Start: 8045, Stop: 8989, Start Num: 32

Candidate Starts for McGee_28:

(Start: 32 @8045 has 142 MA's), (Start: 35 @8051 has 21 MA's), (70, 8174), (82, 8213), (85, 8237), (95, 8390), (97, 8399), (103, 8435), (104, 8447), (113, 8540), (119, 8621), (123, 8627), (129, 8675), (139, 8795), (150, 8906), (153, 8927), (158, 8957),

Gene: McWolfish_28 Start: 9153, Stop: 10097, Start Num: 32

Candidate Starts for McWolfish_28:

(Start: 32 @9153 has 142 MA's), (Start: 35 @9159 has 21 MA's), (70, 9282), (82, 9321), (85, 9345), (95, 9498), (97, 9507), (103, 9543), (104, 9555), (113, 9648), (119, 9729), (123, 9735), (129, 9783), (139, 9903), (150, 10014), (153, 10035), (158, 10065),

Gene: Megamind_29 Start: 9391, Stop: 10335, Start Num: 32

Candidate Starts for Megamind_29:

(Start: 32 @9391 has 142 MA's), (Start: 35 @9397 has 21 MA's), (70, 9520), (82, 9559), (85, 9583), (95, 9736), (97, 9745), (103, 9781), (104, 9793), (113, 9886), (119, 9967), (123, 9973), (129, 10021), (139, 10141), (150, 10252), (153, 10273), (158, 10303),

Gene: MeganTheeKilla_136 Start: 78428, Stop: 79309, Start Num: 25

Candidate Starts for MeganTheeKilla_136:

(13, 78350), (15, 78359), (Start: 25 @78428 has 60 MA's), (68, 78548), (81, 78587), (96, 78758), (100, 78788), (101, 78791), (128, 78974), (150, 79220),

Gene: Melpomini_28 Start: 8263, Stop: 9207, Start Num: 32

Candidate Starts for Melpomini_28:

(Start: 32 @8263 has 142 MA's), (Start: 35 @8269 has 21 MA's), (70, 8392), (82, 8431), (85, 8455), (95, 8608), (97, 8617), (103, 8653), (104, 8665), (113, 8758), (119, 8839), (123, 8845), (129, 8893), (139, 9013), (150, 9124), (153, 9145), (158, 9175),

Gene: MikeLiesIn_29 Start: 9406, Stop: 10350, Start Num: 32

Candidate Starts for MikeLiesIn_29:

(Start: 32 @9406 has 142 MA's), (Start: 35 @9412 has 21 MA's), (70, 9535), (82, 9574), (85, 9598), (95, 9751), (97, 9760), (103, 9796), (104, 9808), (113, 9901), (119, 9982), (123, 9988), (129, 10036), (139, 10156), (150, 10267), (153, 10288), (158, 10318),

Gene: Mikro_27 Start: 9892, Stop: 10836, Start Num: 32

Candidate Starts for Mikro_27:

(Start: 32 @9892 has 142 MA's), (Start: 35 @9898 has 21 MA's), (70, 10021), (82, 10060), (85, 10084), (95, 10237), (97, 10246), (103, 10282), (104, 10294), (113, 10387), (119, 10468), (123, 10474), (129, 10522), (139, 10642), (150, 10753), (153, 10774), (158, 10804),

Gene: MindFlayer_157 Start: 89013, Stop: 89879, Start Num: 25

Candidate Starts for MindFlayer_157:

(Start: 25 @89013 has 60 MA's), (31, 89034), (57, 89106), (71, 89127), (84, 89181), (111, 89463), (115, 89484), (150, 89790), (160, 89850),

Gene: MoMoMixon_30 Start: 9720, Stop: 10664, Start Num: 32

Candidate Starts for MoMoMixon_30:

(Start: 32 @9720 has 142 MA's), (Start: 35 @9726 has 21 MA's), (70, 9849), (82, 9888), (85, 9912), (95, 10065), (97, 10074), (103, 10110), (104, 10122), (113, 10215), (119, 10296), (123, 10302), (129, 10350), (139, 10470), (150, 10581), (153, 10602), (158, 10632),

Gene: Moab_136 Start: 80717, Stop: 81601, Start Num: 25

Candidate Starts for Moab_136:

(Start: 25 @80717 has 60 MA's), (68, 80837), (81, 80876), (90, 80960), (101, 81080), (110, 81170), (116, 81206), (118, 81236), (150, 81509),

Gene: Momo_28 Start: 8861, Stop: 9805, Start Num: 32

Candidate Starts for Momo_28:

(Start: 32 @8861 has 142 MA's), (Start: 35 @8867 has 21 MA's), (70, 8990), (82, 9029), (85, 9053), (95, 9206), (97, 9215), (103, 9251), (104, 9263), (113, 9356), (119, 9437), (123, 9443), (129, 9491), (139, 9611), (150, 9722), (153, 9743), (158, 9773),

Gene: MontyDev_78 Start: 59983, Stop: 60945, Start Num: 20

Candidate Starts for MontyDev_78:

(Start: 20 @59983 has 3 MA's), (22, 60001), (Start: 27 @60019 has 2 MA's), (48, 60076), (69, 60148), (70, 60151), (76, 60166), (77, 60169), (78, 60172), (83, 60190), (86, 60214), (88, 60259), (91, 60286), (92, 60295), (94, 60319), (96, 60346), (99, 60373), (102, 60382), (108, 60454), (112, 60490), (117, 60508), (125, 60589), (126, 60604), (129, 60628), (135, 60670), (136, 60676), (150, 60856), (155, 60892),

Gene: Morizzled23_28 Start: 8257, Stop: 9201, Start Num: 32

Candidate Starts for Morizzled23_28:

(Start: 32 @8257 has 142 MA's), (Start: 35 @8263 has 21 MA's), (70, 8386), (82, 8425), (85, 8449), (95, 8602), (97, 8611), (103, 8647), (104, 8659), (113, 8752), (119, 8833), (123, 8839), (129, 8887), (139, 9007), (150, 9118), (153, 9139), (158, 9169),

Gene: Mugiwara_168 Start: 90296, Stop: 91168, Start Num: 25

Candidate Starts for Mugiwara_168:

(Start: 25 @90296 has 60 MA's), (34, 90323), (Start: 35 @90326 has 21 MA's), (71, 90410), (77, 90428), (111, 90746), (115, 90767), (150, 91073),

Gene: MulchMansion_153 Start: 88902, Stop: 89777, Start Num: 25

Candidate Starts for MulchMansion_153:

(Start: 25 @88902 has 60 MA's), (29, 88917), (37, 88938), (79, 89040), (83, 89055), (93, 89169), (100, 89247), (126, 89424), (128, 89436), (150, 89682),

Gene: Naija_29 Start: 8867, Stop: 9805, Start Num: 35

Candidate Starts for Naija_29:

(Start: 32 @8861 has 142 MA's), (Start: 35 @8867 has 21 MA's), (70, 8990), (82, 9029), (85, 9053), (95, 9206), (97, 9215), (103, 9251), (104, 9263), (113, 9356), (119, 9437), (123, 9443), (129, 9491), (139, 9611), (150, 9722), (153, 9743), (158, 9773),

Gene: Napoleon13_28 Start: 8282, Stop: 9220, Start Num: 35

Candidate Starts for Napoleon13_28:

(Start: 32 @8276 has 142 MA's), (Start: 35 @8282 has 21 MA's), (70, 8405), (82, 8444), (85, 8468), (95, 8621), (97, 8630), (103, 8666), (104, 8678), (113, 8771), (119, 8852), (123, 8858), (129, 8906), (139, 9026), (150, 9137), (153, 9158), (158, 9188),

Gene: Nappy_30 Start: 9571, Stop: 10515, Start Num: 33

Candidate Starts for Nappy_30:

(Start: 33 @9571 has 5 MA's), (Start: 35 @9577 has 21 MA's), (70, 9700), (82, 9739), (85, 9763), (95, 9916), (97, 9925), (103, 9961), (104, 9973), (111, 10054), (113, 10066), (119, 10147), (123, 10153), (129, 10201), (139, 10321), (150, 10432), (153, 10453), (158, 10483),

Gene: Naval22_31 Start: 9446, Stop: 10390, Start Num: 32

Candidate Starts for Naval22_31:

(Start: 32 @9446 has 142 MA's), (Start: 35 @9452 has 21 MA's), (70, 9575), (82, 9614), (85, 9638), (95, 9791), (97, 9800), (103, 9836), (104, 9848), (113, 9941), (119, 10022), (123, 10028), (129, 10076), (139, 10196), (150, 10307), (153, 10328), (158, 10358),

Gene: NedWong_30 Start: 9406, Stop: 10350, Start Num: 32

Candidate Starts for NedWong_30:

(Start: 32 @9406 has 142 MA's), (Start: 35 @9412 has 21 MA's), (70, 9535), (82, 9574), (85, 9598), (95, 9751), (97, 9760), (103, 9796), (104, 9808), (113, 9901), (119, 9982), (123, 9988), (129, 10036), (139, 10156), (150, 10267), (153, 10288), (158, 10318),

Gene: Ngannou_27 Start: 8037, Stop: 8981, Start Num: 32

Candidate Starts for Ngannou_27:

(Start: 32 @8037 has 142 MA's), (Start: 35 @8043 has 21 MA's), (70, 8166), (82, 8205), (85, 8229), (95, 8382), (97, 8391), (103, 8427), (104, 8439), (113, 8532), (119, 8613), (123, 8619), (129, 8667), (139, 8787), (150, 8898), (153, 8919), (158, 8949),

Gene: NiceHouse_121 Start: 80985, Stop: 81857, Start Num: 28

Candidate Starts for NiceHouse_121:

(Start: 28 @80985 has 4 MA's), (30, 80991), (54, 81072), (64, 81096), (68, 81111), (70, 81117), (74, 81129), (76, 81135), (83, 81159), (88, 81225), (89, 81231), (98, 81333), (107, 81396), (111, 81447), (124, 81525), (129, 81558), (144, 81744), (146, 81762), (147, 81768),

Gene: Nidhogg_30 Start: 9470, Stop: 10414, Start Num: 32

Candidate Starts for Nidhogg_30:

(Start: 32 @9470 has 142 MA's), (Start: 35 @9476 has 21 MA's), (70, 9599), (82, 9638), (85, 9662), (95, 9815), (97, 9824), (103, 9860), (104, 9872), (113, 9965), (119, 10046), (123, 10052), (129, 10100), (139, 10220), (150, 10331), (153, 10352), (158, 10382),

Gene: Nilo_80 Start: 60329, Stop: 61303, Start Num: 19

Candidate Starts for Nilo_80:

(18, 60326), (Start: 19 @60329 has 4 MA's), (Start: 20 @60341 has 3 MA's), (22, 60359), (Start: 27 @60377 has 2 MA's), (48, 60434), (69, 60506), (70, 60509), (76, 60524), (77, 60527), (78, 60530), (83, 60548), (86, 60572), (88, 60617), (91, 60644), (92, 60653), (94, 60677), (96, 60704), (99, 60731), (102, 60740), (103, 60746), (108, 60812), (112, 60848), (117, 60866), (125, 60947), (126, 60962), (129, 60986), (135, 61028), (136, 61034), (143, 61157), (150, 61214), (155, 61250),

Gene: NoodleTree_28 Start: 9168, Stop: 10112, Start Num: 32

Candidate Starts for NoodleTree_28:

(Start: 32 @9168 has 142 MA's), (Start: 35 @9174 has 21 MA's), (70, 9297), (82, 9336), (85, 9360), (95, 9513), (97, 9522), (103, 9558), (104, 9570), (113, 9663), (119, 9744), (123, 9750), (129, 9798), (139, 9918), (150, 10029), (153, 10050), (158, 10080),

Gene: NootNoot_149 Start: 88007, Stop: 88876, Start Num: 25

Candidate Starts for NootNoot_149:

(17, 87947), (Start: 25 @88007 has 60 MA's), (74, 88130), (99, 88349), (105, 88388), (126, 88526), (152, 88799),

Gene: Norm_29 Start: 9406, Stop: 10350, Start Num: 32

Candidate Starts for Norm_29:

(Start: 32 @9406 has 142 MA's), (Start: 35 @9412 has 21 MA's), (70, 9535), (82, 9574), (85, 9598), (95, 9751), (97, 9760), (103, 9796), (104, 9808), (113, 9901), (119, 9982), (123, 9988), (129, 10036), (139, 10156), (150, 10267), (153, 10288), (158, 10318),

Gene: NuevoMundo_32 Start: 10460, Stop: 11404, Start Num: 32

Candidate Starts for NuevoMundo_32:

(Start: 32 @10460 has 142 MA's), (Start: 35 @10466 has 21 MA's), (70, 10589), (82, 10628), (85, 10652), (95, 10805), (97, 10814), (103, 10850), (104, 10862), (113, 10955), (119, 11036), (123, 11042), (129, 11090), (139, 11210), (150, 11321), (153, 11342), (158, 11372),

Gene: Octobien14_54 Start: 37174, Stop: 38052, Start Num: 24

Candidate Starts for Octobien14_54:

(Start: 24 @37174 has 17 MA's), (26, 37180), (37, 37210), (42, 37225), (45, 37234), (86, 37378), (92, 37459), (97, 37516), (98, 37531), (103, 37552), (115, 37666), (116, 37669), (129, 37753), (132, 37786), (133, 37792), (134, 37795), (140, 37879), (147, 37960),

Gene: PacManQ_154 Start: 89807, Stop: 90676, Start Num: 25

Candidate Starts for PacManQ_154:

(17, 89753), (Start: 25 @89807 has 60 MA's), (39, 89849), (46, 89870), (47, 89873), (84, 89975), (120, 90314), (149, 90581),

Gene: Paradiddles_148 Start: 90305, Stop: 91174, Start Num: 25

Candidate Starts for Paradiddles_148:

(17, 90245), (Start: 25 @90305 has 60 MA's), (74, 90428), (99, 90647), (105, 90686), (126, 90824), (152, 91097),

Gene: ParkTD_28 Start: 9406, Stop: 10350, Start Num: 32

Candidate Starts for ParkTD_28:

(Start: 32 @9406 has 142 MA's), (Start: 35 @9412 has 21 MA's), (70, 9535), (82, 9574), (85, 9598), (95, 9751), (97, 9760), (103, 9796), (104, 9808), (113, 9901), (119, 9982), (123, 9988), (129, 10036), (139, 10156), (150, 10267), (153, 10288), (158, 10318),

Gene: Patelgo_139 Start: 81409, Stop: 82293, Start Num: 25

Candidate Starts for Patelgo_139:

(Start: 25 @81409 has 60 MA's), (68, 81529), (81, 81568), (90, 81652), (101, 81772), (110, 81862), (116, 81898), (118, 81928), (150, 82201), (156, 82246),

Gene: Patter_29 Start: 8878, Stop: 9822, Start Num: 32

Candidate Starts for Patter_29:

(Start: 32 @8878 has 142 MA's), (Start: 35 @8884 has 21 MA's), (70, 9007), (82, 9046), (85, 9070), (95, 9223), (97, 9232), (103, 9268), (104, 9280), (113, 9373), (119, 9454), (123, 9460), (129, 9508), (139, 9628), (150, 9739), (153, 9760), (158, 9790),

Gene: Peebs_150 Start: 90105, Stop: 90974, Start Num: 25

Candidate Starts for Peebs_150:

(17, 90051), (Start: 25 @90105 has 60 MA's), (39, 90147), (46, 90168), (47, 90171), (84, 90273), (88, 90324), (120, 90612), (149, 90879),

Gene: PegLeg_120 Start: 62875, Stop: 63774, Start Num: 24

Candidate Starts for PegLeg_120:

(22, 62869), (Start: 24 @62875 has 17 MA's), (Start: 27 @62887 has 2 MA's), (40, 62920), (51, 62956), (56, 62986), (59, 62992), (76, 63040), (84, 63079), (91, 63160), (92, 63169), (96, 63220), (108, 63328), (109, 63340), (122, 63421), (130, 63484), (133, 63499), (135, 63505), (139, 63580), (144, 63646), (147, 63670), (152, 63706), (157, 63742),

Gene: Pepperwood_152 Start: 90246, Stop: 91115, Start Num: 25

Candidate Starts for Pepperwood_152:

(17, 90192), (Start: 25 @90246 has 60 MA's), (39, 90288), (46, 90309), (47, 90312), (120, 90753), (149, 91020),

Gene: Peregrin_142 Start: 80771, Stop: 81640, Start Num: 28

Candidate Starts for Peregrin_142:

(16, 80693), (Start: 28 @80771 has 4 MA's), (87, 81008), (98, 81116), (106, 81173), (121, 81302), (148, 81563),

Gene: Phlegm_31 Start: 8861, Stop: 9805, Start Num: 32

Candidate Starts for Phlegm_31:

(Start: 32 @8861 has 142 MA's), (Start: 35 @8867 has 21 MA's), (70, 8990), (82, 9029), (85, 9053), (95, 9206), (97, 9215), (103, 9251), (104, 9263), (113, 9356), (119, 9437), (123, 9443), (129, 9491), (139, 9611), (150, 9722), (153, 9743), (158, 9773),

Gene: Phox_28 Start: 9570, Stop: 10514, Start Num: 32

Candidate Starts for Phox_28:

(Start: 32 @9570 has 142 MA's), (Start: 35 @9576 has 21 MA's), (70, 9699), (82, 9738), (85, 9762), (95, 9915), (97, 9924), (103, 9960), (104, 9972), (113, 10065), (119, 10146), (123, 10152), (129, 10200), (139, 10320), (150, 10431), (153, 10452), (158, 10482),

Gene: Phredrick_138 Start: 78191, Stop: 79072, Start Num: 25

Candidate Starts for Phredrick_138:

(Start: 25 @78191 has 60 MA's), (68, 78311), (81, 78350), (96, 78521), (100, 78551), (101, 78554), (116, 78680), (128, 78737), (150, 78983),

Gene: Phusco_29 Start: 8863, Stop: 9801, Start Num: 35

Candidate Starts for Phusco_29:

(Start: 32 @8857 has 142 MA's), (Start: 35 @8863 has 21 MA's), (70, 8986), (82, 9025), (85, 9049), (95, 9202), (97, 9211), (103, 9247), (104, 9259), (113, 9352), (119, 9433), (123, 9439), (129, 9487), (139, 9607), (150, 9718), (153, 9739), (158, 9769),

Gene: Pier_31 Start: 9564, Stop: 10508, Start Num: 32

Candidate Starts for Pier_31:

(Start: 32 @9564 has 142 MA's), (Start: 35 @9570 has 21 MA's), (70, 9693), (82, 9732), (85, 9756), (87, 9789), (95, 9909), (97, 9918), (103, 9954), (104, 9966), (113, 10059), (119, 10140), (123, 10146), (129, 10194), (139, 10314), (150, 10425), (153, 10446), (158, 10476),

Gene: Pinkcreek_21 Start: 7265, Stop: 8209, Start Num: 32

Candidate Starts for Pinkcreek_21:

(Start: 32 @7265 has 142 MA's), (Start: 35 @7271 has 21 MA's), (70, 7394), (82, 7433), (85, 7457), (95, 7610), (97, 7619), (103, 7655), (104, 7667), (113, 7760), (119, 7841), (123, 7847), (129, 7895), (139, 8015), (146, 8099), (150, 8126), (153, 8147), (158, 8177),

Gene: PinkiePie_149 Start: 89108, Stop: 89977, Start Num: 25

Candidate Starts for PinkiePie_149:

(17, 89048), (Start: 25 @89108 has 60 MA's), (74, 89231), (99, 89450), (105, 89489), (126, 89627), (152, 89900),

Gene: Pio_32 Start: 10255, Stop: 11199, Start Num: 32

Candidate Starts for Pio_32:

(Start: 32 @10255 has 142 MA's), (Start: 35 @10261 has 21 MA's), (70, 10384), (82, 10423), (85, 10447), (95, 10600), (97, 10609), (103, 10645), (104, 10657), (113, 10750), (119, 10831), (123, 10837), (129, 10885), (139, 11005), (150, 11116), (153, 11137), (158, 11167),

Gene: Pivoine_29 Start: 8861, Stop: 9805, Start Num: 32

Candidate Starts for Pivoine_29:

(Start: 32 @8861 has 142 MA's), (Start: 35 @8867 has 21 MA's), (70, 8990), (82, 9029), (85, 9053), (95, 9206), (97, 9215), (103, 9251), (104, 9263), (113, 9356), (119, 9437), (123, 9443), (129, 9491), (139, 9611), (150, 9722), (153, 9743), (158, 9773),

Gene: Pleione_31 Start: 9406, Stop: 10350, Start Num: 32

Candidate Starts for Pleione_31:

(Start: 32 @9406 has 142 MA's), (Start: 35 @9412 has 21 MA's), (70, 9535), (82, 9574), (85, 9598), (95, 9751), (97, 9760), (103, 9796), (104, 9808), (113, 9901), (119, 9982), (123, 9988), (129, 10036), (139, 10156), (150, 10267), (153, 10288), (158, 10318),

Gene: PumpkinSpice_165 Start: 90425, Stop: 91291, Start Num: 25

Candidate Starts for PumpkinSpice_165:

(Start: 25 @90425 has 60 MA's), (31, 90446), (57, 90518), (71, 90539), (84, 90593), (111, 90875), (115, 90896), (150, 91202), (160, 91262),

Gene: PurduePete_28 Start: 9117, Stop: 10061, Start Num: 32

Candidate Starts for PurduePete_28:

(Start: 32 @9117 has 142 MA's), (Start: 35 @9123 has 21 MA's), (70, 9246), (82, 9285), (85, 9309), (95, 9462), (97, 9471), (103, 9507), (104, 9519), (113, 9612), (119, 9693), (123, 9699), (129, 9747), (139, 9867), (150, 9978), (153, 9999), (158, 10029),

Gene: QBert_27 Start: 9570, Stop: 10514, Start Num: 32

Candidate Starts for QBert_27:

(Start: 32 @9570 has 142 MA's), (Start: 35 @9576 has 21 MA's), (70, 9699), (82, 9738), (85, 9762), (95, 9915), (97, 9924), (103, 9960), (104, 9972), (113, 10065), (119, 10146), (123, 10152), (129, 10200), (139, 10320), (146, 10404), (150, 10431), (153, 10452), (158, 10482),

Gene: Quaran19_163 Start: 89395, Stop: 90261, Start Num: 25

Candidate Starts for Quaran19_163:

(Start: 25 @89395 has 60 MA's), (31, 89416), (57, 89488), (71, 89509), (84, 89563), (111, 89845), (115, 89866), (150, 90172), (160, 90232),

Gene: Quasimodo_29 Start: 9821, Stop: 10765, Start Num: 32

Candidate Starts for Quasimodo_29:

(Start: 32 @9821 has 142 MA's), (Start: 35 @9827 has 21 MA's), (70, 9950), (82, 9989), (85, 10013), (95, 10166), (97, 10175), (103, 10211), (104, 10223), (113, 10316), (119, 10397), (123, 10403), (129, 10451), (139, 10571), (150, 10682), (153, 10703), (158, 10733),

Gene: Rabinovish_28 Start: 9858, Stop: 10802, Start Num: 32

Candidate Starts for Rabinovish_28:

(Start: 32 @9858 has 142 MA's), (Start: 35 @9864 has 21 MA's), (70, 9987), (82, 10026), (85, 10050), (95, 10203), (97, 10212), (103, 10248), (104, 10260), (113, 10353), (119, 10434), (123, 10440), (129,

10488), (139, 10608), (146, 10692), (150, 10719), (153, 10740), (158, 10770),

Gene: Rahel_29 Start: 8857, Stop: 9801, Start Num: 32

Candidate Starts for Rahel_29:

(Start: 32 @8857 has 142 MA's), (Start: 35 @8863 has 21 MA's), (70, 8986), (82, 9025), (85, 9049), (95, 9202), (97, 9211), (103, 9247), (104, 9259), (113, 9352), (119, 9433), (123, 9439), (129, 9487), (139, 9607), (150, 9718), (153, 9739), (158, 9769),

Gene: Reindeer_119 Start: 63689, Stop: 64588, Start Num: 24

Candidate Starts for Reindeer_119:

(22, 63683), (Start: 24 @63689 has 17 MA's), (Start: 27 @63701 has 2 MA's), (43, 63743), (49, 63758), (59, 63806), (91, 63974), (92, 63983), (96, 64034), (97, 64040), (108, 64142), (109, 64154), (115, 64190), (122, 64235), (130, 64298), (133, 64313), (135, 64319), (137, 64328), (138, 64367), (139, 64394), (144, 64460), (151, 64508), (152, 64520), (157, 64556), (158, 64559),

Gene: Riparian_80 Start: 59776, Stop: 60750, Start Num: 19

Candidate Starts for Riparian_80:

(18, 59773), (Start: 19 @59776 has 4 MA's), (Start: 20 @59788 has 3 MA's), (22, 59806), (Start: 27 @59824 has 2 MA's), (48, 59881), (69, 59953), (70, 59956), (76, 59971), (77, 59974), (78, 59977), (83, 59995), (86, 60019), (88, 60064), (91, 60091), (92, 60100), (94, 60124), (96, 60151), (99, 60178), (102, 60187), (103, 60193), (108, 60259), (112, 60295), (117, 60313), (125, 60394), (126, 60409), (129, 60433), (135, 60475), (136, 60481), (143, 60604), (150, 60661), (155, 60697),

Gene: Rizal_27 Start: 8323, Stop: 9267, Start Num: 32

Candidate Starts for Rizal_27:

(Start: 32 @8323 has 142 MA's), (Start: 35 @8329 has 21 MA's), (70, 8452), (82, 8491), (85, 8515), (95, 8668), (97, 8677), (103, 8713), (104, 8725), (113, 8818), (119, 8899), (123, 8905), (129, 8953), (139, 9073), (150, 9184), (153, 9205), (158, 9235),

Gene: RoMag_24 Start: 8655, Stop: 9599, Start Num: 32

Candidate Starts for RoMag_24:

(Start: 32 @8655 has 142 MA's), (Start: 35 @8661 has 21 MA's), (70, 8784), (82, 8823), (85, 8847), (95, 9000), (97, 9009), (103, 9045), (104, 9057), (113, 9150), (119, 9231), (123, 9237), (129, 9285), (139, 9405), (146, 9489), (150, 9516), (153, 9537), (158, 9567),

Gene: Ronan_24 Start: 6963, Stop: 7907, Start Num: 32

Candidate Starts for Ronan_24:

(Start: 32 @6963 has 142 MA's), (Start: 35 @6969 has 21 MA's), (70, 7092), (82, 7131), (85, 7155), (95, 7308), (97, 7317), (103, 7353), (104, 7365), (113, 7458), (119, 7539), (123, 7545), (129, 7593), (139, 7713), (146, 7797), (150, 7824), (153, 7845), (158, 7875),

Gene: Roots515_29 Start: 9405, Stop: 10349, Start Num: 32

Candidate Starts for Roots515_29:

(Start: 32 @9405 has 142 MA's), (Start: 35 @9411 has 21 MA's), (70, 9534), (82, 9573), (85, 9597), (95, 9750), (97, 9759), (103, 9795), (104, 9807), (113, 9900), (119, 9981), (123, 9987), (129, 10035), (139, 10155), (150, 10266), (153, 10287), (158, 10317),

Gene: Rope_78 Start: 59935, Stop: 60909, Start Num: 19

Candidate Starts for Rope_78:

(18, 59932), (Start: 19 @59935 has 4 MA's), (Start: 20 @59947 has 3 MA's), (22, 59965), (Start: 27 @59983 has 2 MA's), (48, 60040), (69, 60112), (70, 60115), (76, 60130), (77, 60133), (78, 60136), (83, 60154), (86, 60178), (88, 60223), (91, 60250), (92, 60259), (94, 60283), (96, 60310), (99, 60337), (102, 60346), (103, 60352), (108, 60418), (112, 60454), (117, 60472), (125, 60553), (126, 60568),

(129, 60592), (135, 60634), (136, 60640), (143, 60763), (150, 60820), (155, 60856),

Gene: Salacia_31 Start: 9406, Stop: 10350, Start Num: 32

Candidate Starts for Salacia_31:

(Start: 32 @9406 has 142 MA's), (Start: 35 @9412 has 21 MA's), (70, 9535), (82, 9574), (85, 9598), (95, 9751), (97, 9760), (103, 9796), (104, 9808), (113, 9901), (119, 9982), (123, 9988), (129, 10036), (139, 10156), (150, 10267), (153, 10288), (158, 10318),

Gene: SaltySpittoon_163 Start: 89408, Stop: 90274, Start Num: 25

Candidate Starts for SaltySpittoon_163:

(Start: 25 @89408 has 60 MA's), (31, 89429), (57, 89501), (71, 89522), (84, 89576), (111, 89858), (115, 89879), (150, 90185), (160, 90245),

Gene: Samisti12_154 Start: 91489, Stop: 92358, Start Num: 25

Candidate Starts for Samisti12_154:

(17, 91435), (Start: 25 @91489 has 60 MA's), (39, 91531), (46, 91552), (47, 91555), (84, 91657), (88, 91708), (120, 91996), (149, 92263),

Gene: Sauce_30 Start: 9533, Stop: 10477, Start Num: 32

Candidate Starts for Sauce_30:

(Start: 32 @9533 has 142 MA's), (Start: 35 @9539 has 21 MA's), (70, 9662), (82, 9701), (85, 9725), (95, 9878), (97, 9887), (103, 9923), (104, 9935), (113, 10028), (119, 10109), (123, 10115), (129, 10163), (139, 10283), (146, 10367), (150, 10394), (153, 10415), (158, 10445),

Gene: ScottMcG_29 Start: 9719, Stop: 10657, Start Num: 35

Candidate Starts for ScottMcG_29:

(Start: 32 @9713 has 142 MA's), (Start: 35 @9719 has 21 MA's), (70, 9842), (82, 9881), (85, 9905), (95, 10058), (97, 10067), (103, 10103), (104, 10115), (113, 10208), (119, 10289), (123, 10295), (129, 10343), (139, 10463), (150, 10574), (153, 10595), (158, 10625),

Gene: Sebata_29 Start: 9762, Stop: 10700, Start Num: 35

Candidate Starts for Sebata_29:

(Start: 32 @9756 has 142 MA's), (Start: 35 @9762 has 21 MA's), (70, 9885), (82, 9924), (85, 9948), (95, 10101), (97, 10110), (103, 10146), (104, 10158), (113, 10251), (119, 10332), (123, 10338), (129, 10386), (139, 10506), (150, 10617), (153, 10638), (158, 10668),

Gene: Send513_78 Start: 60324, Stop: 61286, Start Num: 20

Candidate Starts for Send513_78:

(Start: 20 @60324 has 3 MA's), (22, 60342), (Start: 27 @60360 has 2 MA's), (48, 60417), (69, 60489), (70, 60492), (76, 60507), (77, 60510), (78, 60513), (83, 60531), (86, 60555), (88, 60600), (91, 60627), (92, 60636), (94, 60660), (96, 60687), (99, 60714), (102, 60723), (103, 60729), (108, 60795), (112, 60831), (117, 60849), (125, 60930), (126, 60945), (129, 60969), (135, 61011), (136, 61017), (143, 61140), (150, 61197), (155, 61233),

Gene: Sephiroth_52 Start: 36766, Stop: 37644, Start Num: 24

Candidate Starts for Sephiroth_52:

(Start: 24 @36766 has 17 MA's), (37, 36802), (42, 36817), (45, 36826), (86, 36970), (92, 37051), (97, 37108), (98, 37123), (103, 37144), (115, 37258), (116, 37261), (129, 37345), (132, 37378), (133, 37384), (134, 37387), (140, 37471), (147, 37552),

Gene: SeresaTree_132 Start: 78701, Stop: 79621, Start Num: 25

Candidate Starts for SeresaTree_132:

(23, 78695), (Start: 25 @78701 has 60 MA's), (55, 78812), (74, 78863), (75, 78866), (79, 78878), (110, 79181), (114, 79211), (116, 79217), (131, 79319), (149, 79523), (150, 79526), (152, 79541),

Gene: Sham_131 Start: 79253, Stop: 80173, Start Num: 25

Candidate Starts for Sham_131:

(9, 79154), (11, 79163), (12, 79175), (23, 79247), (Start: 25 @79253 has 60 MA's), (Start: 35 @79283 has 21 MA's), (75, 79418), (79, 79430), (110, 79733), (114, 79763), (116, 79769), (131, 79871), (149, 80075), (150, 80078), (161, 80156),

Gene: Shaqnato_25 Start: 7980, Stop: 8924, Start Num: 32

Candidate Starts for Shaqnato_25:

(Start: 32 @7980 has 142 MA's), (Start: 35 @7986 has 21 MA's), (70, 8109), (82, 8148), (85, 8172), (95, 8325), (97, 8334), (103, 8370), (104, 8382), (113, 8475), (119, 8556), (123, 8562), (129, 8610), (139, 8730), (150, 8841), (153, 8862), (158, 8892),

Gene: Shelob_31 Start: 10288, Stop: 11232, Start Num: 32

Candidate Starts for Shelob_31:

(Start: 32 @10288 has 142 MA's), (Start: 35 @10294 has 21 MA's), (70, 10417), (82, 10456), (85, 10480), (95, 10633), (97, 10642), (103, 10678), (104, 10690), (113, 10783), (119, 10864), (123, 10870), (129, 10918), (139, 11038), (146, 11122), (150, 11149), (153, 11170), (158, 11200),

Gene: ShiaLabeouf_29 Start: 8857, Stop: 9801, Start Num: 32

Candidate Starts for ShiaLabeouf_29:

(Start: 32 @8857 has 142 MA's), (Start: 35 @8863 has 21 MA's), (70, 8986), (82, 9025), (85, 9049), (95, 9202), (97, 9211), (103, 9247), (104, 9259), (113, 9352), (119, 9433), (123, 9439), (129, 9487), (139, 9607), (150, 9718), (153, 9739), (158, 9769),

Gene: Shifa_26 Start: 9039, Stop: 9983, Start Num: 32

Candidate Starts for Shifa_26:

(Start: 32 @9039 has 142 MA's), (Start: 35 @9045 has 21 MA's), (70, 9168), (82, 9207), (85, 9231), (95, 9384), (97, 9393), (103, 9429), (104, 9441), (113, 9534), (119, 9615), (123, 9621), (129, 9669), (139, 9789), (146, 9873), (150, 9900), (153, 9921), (158, 9951),

Gene: Shnickers_29 Start: 8857, Stop: 9801, Start Num: 32

Candidate Starts for Shnickers_29:

(Start: 32 @8857 has 142 MA's), (Start: 35 @8863 has 21 MA's), (70, 8986), (82, 9025), (85, 9049), (95, 9202), (97, 9211), (103, 9247), (104, 9259), (113, 9352), (119, 9433), (123, 9439), (129, 9487), (139, 9607), (150, 9718), (153, 9739), (158, 9769),

Gene: Shrimp_29 Start: 9410, Stop: 10354, Start Num: 32

Candidate Starts for Shrimp_29:

(Start: 32 @9410 has 142 MA's), (Start: 35 @9416 has 21 MA's), (70, 9539), (82, 9578), (85, 9602), (95, 9755), (97, 9764), (103, 9800), (104, 9812), (113, 9905), (119, 9986), (123, 9992), (129, 10040), (139, 10160), (150, 10271), (153, 10292), (158, 10322),

Gene: SilverDipper_30 Start: 8861, Stop: 9805, Start Num: 32

Candidate Starts for SilverDipper_30:

(Start: 32 @8861 has 142 MA's), (Start: 35 @8867 has 21 MA's), (70, 8990), (82, 9029), (85, 9053), (95, 9206), (97, 9215), (103, 9251), (104, 9263), (113, 9356), (119, 9437), (123, 9443), (129, 9491), (139, 9611), (150, 9722), (153, 9743), (158, 9773),

Gene: Sixama_124 Start: 79551, Stop: 78667, Start Num: 27

Candidate Starts for Sixama_124:

(10, 79659), (Start: 27 @79551 has 2 MA's), (Start: 36 @79527 has 3 MA's), (50, 79488), (53, 79452), (60, 79434), (67, 79419), (68, 79413), (72, 79401), (80, 79380), (82, 79371), (87, 79314), (89, 79296), (100, 79185), (107, 79131), (111, 79080), (129, 78972), (144, 78786),

Gene: Skinny_122 Start: 63991, Stop: 64890, Start Num: 24

Candidate Starts for Skinny_122:

(22, 63985), (Start: 24 @63991 has 17 MA's), (Start: 27 @64003 has 2 MA's), (40, 64036), (51, 64072), (56, 64102), (59, 64108), (76, 64156), (84, 64195), (91, 64276), (92, 64285), (96, 64336), (108, 64444), (109, 64456), (122, 64537), (130, 64600), (133, 64615), (135, 64621), (139, 64696), (144, 64762), (147, 64786), (152, 64822), (157, 64858),

Gene: SmallFry_29 Start: 8857, Stop: 9801, Start Num: 32

Candidate Starts for SmallFry_29:

(Start: 32 @8857 has 142 MA's), (Start: 35 @8863 has 21 MA's), (70, 8986), (82, 9025), (85, 9049), (95, 9202), (97, 9211), (103, 9247), (104, 9259), (113, 9352), (119, 9433), (123, 9439), (129, 9487), (139, 9607), (150, 9718), (153, 9739), (158, 9769),

Gene: Sollertia_160 Start: 89912, Stop: 90781, Start Num: 25

Candidate Starts for Sollertia_160:

(Start: 25 @89912 has 60 MA's), (57, 90005), (70, 90023), (71, 90026), (99, 90254), (111, 90362), (115, 90383), (145, 90650), (147, 90668), (149, 90686), (150, 90689),

Gene: SparkleGoddess_134 Start: 78738, Stop: 79700, Start Num: 14

Candidate Starts for SparkleGoddess_134:

(Start: 14 @78738 has 3 MA's), (16, 78747), (Start: 25 @78813 has 60 MA's), (68, 78933), (73, 78948), (93, 79095), (100, 79173), (116, 79302), (122, 79338), (128, 79359), (142, 79539), (150, 79605), (159, 79668),

Gene: Spec_27 Start: 8863, Stop: 9807, Start Num: 32

Candidate Starts for Spec_27:

(Start: 32 @8863 has 142 MA's), (Start: 35 @8869 has 21 MA's), (70, 8992), (82, 9031), (85, 9055), (95, 9208), (97, 9217), (103, 9253), (104, 9265), (113, 9358), (119, 9439), (123, 9445), (129, 9493), (139, 9613), (150, 9724), (153, 9745), (158, 9775),

Gene: Specks_34 Start: 10701, Stop: 11639, Start Num: 35

Candidate Starts for Specks_34:

(Start: 32 @10695 has 142 MA's), (Start: 35 @10701 has 21 MA's), (70, 10824), (82, 10863), (85, 10887), (95, 11040), (97, 11049), (103, 11085), (104, 11097), (113, 11190), (119, 11271), (123, 11277), (129, 11325), (139, 11445), (150, 11556), (153, 11577), (158, 11607),

Gene: Spelly_165 Start: 89357, Stop: 90226, Start Num: 25

Candidate Starts for Spelly_165:

(Start: 25 @89357 has 60 MA's), (34, 89384), (Start: 35 @89387 has 21 MA's), (71, 89471), (110, 89795), (115, 89828), (142, 90068), (149, 90131), (150, 90134),

Gene: Spilled_167 Start: 89936, Stop: 90802, Start Num: 25

Candidate Starts for Spilled_167:

(Start: 25 @89936 has 60 MA's), (31, 89957), (57, 90029), (71, 90050), (84, 90104), (111, 90386), (115, 90407), (150, 90713), (160, 90773),

Gene: Sprinklers_29 Start: 8895, Stop: 9839, Start Num: 32

Candidate Starts for Sprinklers_29:

(Start: 32 @8895 has 142 MA's), (Start: 35 @8901 has 21 MA's), (70, 9024), (82, 9063), (85, 9087), (95, 9240), (97, 9249), (103, 9285), (104, 9297), (113, 9390), (119, 9471), (123, 9477), (129, 9525), (139, 9645), (150, 9756), (153, 9777), (158, 9807),

Gene: Spud_31 Start: 10252, Stop: 11196, Start Num: 32

Candidate Starts for Spud_31:

(Start: 32 @10252 has 142 MA's), (Start: 35 @10258 has 21 MA's), (70, 10381), (82, 10420), (85, 10444), (95, 10597), (97, 10606), (103, 10642), (104, 10654), (113, 10747), (119, 10828), (123, 10834), (129, 10882), (139, 11002), (150, 11113), (153, 11134), (158, 11164),

Gene: Squillium_152 Start: 89110, Stop: 89979, Start Num: 25

Candidate Starts for Squillium_152:

(17, 89050), (Start: 25 @89110 has 60 MA's), (74, 89233), (99, 89452), (105, 89491), (126, 89629), (152, 89902),

Gene: SrishMeg2525_28 Start: 9117, Stop: 10061, Start Num: 32

Candidate Starts for SrishMeg2525_28:

(Start: 32 @9117 has 142 MA's), (Start: 35 @9123 has 21 MA's), (70, 9246), (82, 9285), (85, 9309), (95, 9462), (97, 9471), (103, 9507), (104, 9519), (113, 9612), (119, 9693), (123, 9699), (129, 9747), (139, 9867), (150, 9978), (153, 9999), (158, 10029),

Gene: Stanimal_158 Start: 89801, Stop: 90670, Start Num: 25

Candidate Starts for Stanimal_158:

(Start: 25 @89801 has 60 MA's), (57, 89894), (70, 89912), (71, 89915), (99, 90143), (111, 90251), (115, 90272), (145, 90539), (147, 90557), (149, 90575), (150, 90578),

Gene: StarPlatinum_168 Start: 91879, Stop: 92745, Start Num: 25

Candidate Starts for StarPlatinum_168:

(Start: 25 @91879 has 60 MA's), (34, 91906), (Start: 35 @91909 has 21 MA's), (71, 91993), (110, 92317), (111, 92329), (115, 92350), (142, 92590), (150, 92656),

Gene: Starbow_160 Start: 89381, Stop: 90247, Start Num: 25

Candidate Starts for Starbow_160:

(Start: 25 @89381 has 60 MA's), (31, 89402), (57, 89474), (71, 89495), (84, 89549), (111, 89831), (115, 89852), (150, 90158), (160, 90218),

Gene: StephanieG_29 Start: 9586, Stop: 10530, Start Num: 32

Candidate Starts for StephanieG_29:

(Start: 32 @9586 has 142 MA's), (Start: 35 @9592 has 21 MA's), (70, 9715), (82, 9754), (85, 9778), (95, 9931), (97, 9940), (103, 9976), (104, 9988), (113, 10081), (119, 10162), (123, 10168), (129, 10216), (139, 10336), (150, 10447), (153, 10468), (158, 10498),

Gene: Stigma_133 Start: 78883, Stop: 79845, Start Num: 14

Candidate Starts for Stigma_133:

(Start: 14 @78883 has 3 MA's), (16, 78892), (Start: 25 @78958 has 60 MA's), (68, 79078), (93, 79240), (100, 79318), (116, 79447), (122, 79483), (128, 79504), (142, 79684), (150, 79750), (159, 79813),

Gene: Stubby_27 Start: 8666, Stop: 9610, Start Num: 32

Candidate Starts for Stubby_27:

(Start: 32 @8666 has 142 MA's), (Start: 35 @8672 has 21 MA's), (70, 8795), (82, 8834), (85, 8858), (95, 9011), (97, 9020), (103, 9056), (104, 9068), (113, 9161), (119, 9242), (123, 9248), (129, 9296), (139, 9416), (146, 9500), (150, 9527), (153, 9548), (158, 9578),

Gene: StubbySaigey_28 Start: 8046, Stop: 8990, Start Num: 32

Candidate Starts for StubbySaigey_28:

(Start: 32 @8046 has 142 MA's), (Start: 35 @8052 has 21 MA's), (70, 8175), (82, 8214), (85, 8238), (95, 8391), (97, 8400), (103, 8436), (104, 8448), (113, 8541), (119, 8622), (123, 8628), (129, 8676), (139, 8796), (150, 8907), (153, 8928), (158, 8958),

Gene: Sushi23_152 Start: 90462, Stop: 91331, Start Num: 25

Candidate Starts for Sushi23_152:

(17, 90408), (Start: 25 @90462 has 60 MA's), (39, 90504), (46, 90525), (47, 90528), (84, 90630), (88, 90681), (120, 90969), (149, 91236),

Gene: Syleon_54 Start: 36693, Stop: 37568, Start Num: 24

Candidate Starts for Syleon_54:

(Start: 24 @36693 has 17 MA's), (34, 36720), (42, 36741), (45, 36750), (86, 36894), (92, 36975), (97, 37032), (98, 37047), (103, 37068), (115, 37182), (116, 37185), (129, 37269), (132, 37302), (133, 37308), (134, 37311), (140, 37395),

Gene: Teardrop_28 Start: 8322, Stop: 9266, Start Num: 32

Candidate Starts for Teardrop_28:

(Start: 32 @8322 has 142 MA's), (Start: 35 @8328 has 21 MA's), (70, 8451), (82, 8490), (85, 8514), (95, 8667), (97, 8676), (103, 8712), (104, 8724), (113, 8817), (119, 8898), (123, 8904), (129, 8952), (139, 9072), (150, 9183), (153, 9204), (158, 9234),

Gene: Teutsch_152 Start: 90785, Stop: 91654, Start Num: 25

Candidate Starts for Teutsch_152:

(17, 90731), (Start: 25 @90785 has 60 MA's), (39, 90827), (46, 90848), (47, 90851), (84, 90953), (88, 91004), (120, 91292), (149, 91559),

Gene: TinyTim_29 Start: 9406, Stop: 10350, Start Num: 32

Candidate Starts for TinyTim_29:

(Start: 32 @9406 has 142 MA's), (Start: 35 @9412 has 21 MA's), (70, 9535), (82, 9574), (85, 9598), (95, 9751), (97, 9760), (103, 9796), (104, 9808), (113, 9901), (119, 9982), (123, 9988), (129, 10036), (139, 10156), (150, 10267), (153, 10288), (158, 10318),

Gene: TomSawyer_165 Start: 90399, Stop: 91271, Start Num: 24

Candidate Starts for TomSawyer_165:

(Start: 24 @90399 has 17 MA's), (Start: 35 @90429 has 21 MA's), (43, 90450), (52, 90486), (100, 90744), (116, 90873), (150, 91176),

Gene: Tonenili_33 Start: 10505, Stop: 11449, Start Num: 33

Candidate Starts for Tonenili_33:

(1, 9845), (2, 9851), (3, 9890), (4, 9992), (5, 10022), (6, 10145), (7, 10148), (8, 10250), (Start: 33 @10505 has 5 MA's), (Start: 35 @10511 has 21 MA's), (70, 10634), (82, 10673), (85, 10697), (87, 10730), (95, 10850), (97, 10859), (103, 10895), (104, 10907), (113, 11000), (123, 11087), (129, 11135), (139, 11255), (150, 11366), (153, 11387), (158, 11417),

Gene: Tortoise16_28 Start: 8857, Stop: 9801, Start Num: 32

Candidate Starts for Tortoise16_28:

(Start: 32 @8857 has 142 MA's), (Start: 35 @8863 has 21 MA's), (70, 8986), (82, 9025), (85, 9049), (95, 9202), (97, 9211), (103, 9247), (104, 9259), (113, 9352), (119, 9433), (123, 9439), (129, 9487), (139, 9607), (150, 9718), (153, 9739), (158, 9769),

Gene: Tribute_152 Start: 90632, Stop: 91501, Start Num: 25

Candidate Starts for Tribute_152:

(17, 90578), (Start: 25 @90632 has 60 MA's), (39, 90674), (46, 90695), (47, 90698), (84, 90800), (88, 90851), (120, 91139), (149, 91406),

Gene: Trina_138 Start: 86276, Stop: 87130, Start Num: 28

Candidate Starts for Trina_138:

(Start: 28 @86276 has 4 MA's), (30, 86282), (38, 86303), (47, 86333), (73, 86384), (77, 86396), (83, 86417), (85, 86438), (87, 86471), (88, 86483), (98, 86579), (107, 86642), (113, 86705), (129, 86831), (136, 86882), (143, 87005), (148, 87053),

Gene: Trinitium_28 Start: 8311, Stop: 9255, Start Num: 32

Candidate Starts for Trinitium_28:

(Start: 32 @8311 has 142 MA's), (Start: 35 @8317 has 21 MA's), (70, 8440), (71, 8443), (82, 8479), (85, 8503), (95, 8656), (97, 8665), (103, 8701), (104, 8713), (113, 8806), (119, 8887), (123, 8893), (129, 8941), (139, 9061), (150, 9172), (153, 9193), (158, 9223),

Gene: TunaTartare_135 Start: 81618, Stop: 82538, Start Num: 25

Candidate Starts for TunaTartare_135:

(9, 81519), (11, 81528), (12, 81540), (23, 81612), (Start: 25 @81618 has 60 MA's), (Start: 35 @81648 has 21 MA's), (79, 81795), (110, 82098), (114, 82128), (116, 82134), (131, 82236), (149, 82440), (150, 82443), (161, 82521),

Gene: Turret_27 Start: 8034, Stop: 8978, Start Num: 32

Candidate Starts for Turret_27:

(Start: 32 @8034 has 142 MA's), (Start: 35 @8040 has 21 MA's), (70, 8163), (82, 8202), (85, 8226), (95, 8379), (97, 8388), (103, 8424), (104, 8436), (113, 8529), (119, 8610), (123, 8616), (129, 8664), (139, 8784), (150, 8895), (153, 8916), (158, 8946),

Gene: TyDawg_111 Start: 61716, Stop: 62615, Start Num: 24

Candidate Starts for TyDawg_111:

(22, 61710), (Start: 24 @61716 has 17 MA's), (Start: 27 @61728 has 2 MA's), (40, 61761), (51, 61797), (56, 61827), (59, 61833), (76, 61881), (84, 61920), (91, 62001), (92, 62010), (96, 62061), (108, 62169), (109, 62181), (122, 62262), (130, 62325), (133, 62340), (135, 62346), (139, 62421), (143, 62475), (144, 62487), (147, 62511), (151, 62535), (152, 62547), (157, 62583),

Gene: Tyke_31 Start: 10269, Stop: 11213, Start Num: 32

Candidate Starts for Tyke_31:

(Start: 32 @10269 has 142 MA's), (Start: 35 @10275 has 21 MA's), (70, 10398), (82, 10437), (85, 10461), (95, 10614), (97, 10623), (103, 10659), (104, 10671), (113, 10764), (119, 10845), (123, 10851), (129, 10899), (139, 11019), (150, 11130), (153, 11151), (158, 11181),

Gene: ValleyTerrace_29 Start: 8861, Stop: 9805, Start Num: 32

Candidate Starts for ValleyTerrace_29:

(Start: 32 @8861 has 142 MA's), (Start: 35 @8867 has 21 MA's), (70, 8990), (82, 9029), (85, 9053), (95, 9206), (97, 9215), (103, 9251), (104, 9263), (113, 9356), (119, 9437), (123, 9443), (129, 9491), (139, 9611), (150, 9722), (153, 9743), (158, 9773),

Gene: Wally_28 Start: 8278, Stop: 9222, Start Num: 32

Candidate Starts for Wally_28:

(Start: 32 @8278 has 142 MA's), (Start: 35 @8284 has 21 MA's), (70, 8407), (82, 8446), (85, 8470), (95, 8623), (97, 8632), (103, 8668), (104, 8680), (113, 8773), (119, 8854), (123, 8860), (129, 8908), (139, 9028), (150, 9139), (153, 9160), (158, 9190),

Gene: Watermoore_152 Start: 90998, Stop: 91867, Start Num: 25

Candidate Starts for Watermoore_152:

(17, 90944), (Start: 25 @90998 has 60 MA's), (39, 91040), (46, 91061), (47, 91064), (84, 91166), (120, 91505), (149, 91772),

Gene: Weiss13_78 Start: 60025, Stop: 60987, Start Num: 20

Candidate Starts for Weiss13_78:

(18, 60010), (Start: 19 @60013 has 4 MA's), (Start: 20 @60025 has 3 MA's), (22, 60043), (Start: 27 @60061 has 2 MA's), (48, 60118), (69, 60190), (70, 60193), (76, 60208), (77, 60211), (78, 60214), (83, 60232), (86, 60256), (88, 60301), (91, 60328), (92, 60337), (94, 60361), (96, 60388), (99, 60415), (102, 60424), (103, 60430), (108, 60496), (112, 60532), (117, 60550), (125, 60631), (126, 60646), (129, 60670), (135, 60712), (136, 60718), (143, 60841), (150, 60898), (155, 60934),

Gene: Willis_29 Start: 9301, Stop: 10245, Start Num: 32

Candidate Starts for Willis_29:

(Start: 32 @9301 has 142 MA's), (Start: 35 @9307 has 21 MA's), (70, 9430), (82, 9469), (85, 9493), (95, 9646), (97, 9655), (103, 9691), (104, 9703), (113, 9796), (119, 9877), (123, 9883), (129, 9931), (139, 10051), (150, 10162), (153, 10183), (158, 10213),

Gene: Wipeout_156 Start: 90208, Stop: 91074, Start Num: 25

Candidate Starts for Wipeout_156:

(Start: 25 @90208 has 60 MA's), (31, 90229), (57, 90301), (71, 90322), (111, 90658), (115, 90679), (150, 90985), (160, 91045),

Gene: Wofford_157 Start: 91902, Stop: 92771, Start Num: 25

Candidate Starts for Wofford_157:

(Start: 25 @91902 has 60 MA's), (34, 91929), (Start: 35 @91932 has 21 MA's), (115, 92373), (127, 92427), (147, 92658), (149, 92676), (150, 92679),

Gene: Yaboi_161 Start: 89375, Stop: 90244, Start Num: 25

Candidate Starts for Yaboi_161:

(Start: 25 @89375 has 60 MA's), (57, 89468), (70, 89486), (71, 89489), (99, 89717), (111, 89825), (115, 89846), (145, 90113), (147, 90131), (149, 90149), (150, 90152),

Gene: Yassified_26 Start: 8064, Stop: 9002, Start Num: 35

Candidate Starts for Yassified_26:

(Start: 32 @8058 has 142 MA's), (Start: 35 @8064 has 21 MA's), (70, 8187), (82, 8226), (85, 8250), (95, 8403), (97, 8412), (103, 8448), (104, 8460), (113, 8553), (119, 8634), (123, 8640), (129, 8688), (139, 8808), (150, 8919), (153, 8940), (158, 8970),

Gene: Yelo_77 Start: 60379, Stop: 61341, Start Num: 20

Candidate Starts for Yelo_77:

(Start: 20 @60379 has 3 MA's), (22, 60397), (Start: 27 @60415 has 2 MA's), (48, 60472), (69, 60544), (70, 60547), (76, 60562), (77, 60565), (78, 60568), (83, 60586), (86, 60610), (88, 60655), (91, 60682), (92, 60691), (94, 60715), (96, 60742), (99, 60769), (102, 60778), (103, 60784), (108, 60850), (112, 60886), (117, 60904), (125, 60985), (126, 61000), (129, 61024), (135, 61066), (136, 61072), (143, 61195), (150, 61252), (155, 61288),

Gene: YemiJoy2021_30 Start: 9406, Stop: 10350, Start Num: 32

Candidate Starts for YemiJoy2021_30:

(Start: 32 @9406 has 142 MA's), (Start: 35 @9412 has 21 MA's), (70, 9535), (82, 9574), (85, 9598), (95, 9751), (97, 9760), (103, 9796), (104, 9808), (113, 9901), (119, 9982), (123, 9988), (129, 10036),

(139, 10156), (150, 10267), (153, 10288), (158, 10318),

Gene: YoungMoneyMata_29 Start: 8612, Stop: 9556, Start Num: 32

Candidate Starts for YoungMoneyMata_29:

(Start: 32 @8612 has 142 MA's), (Start: 35 @8618 has 21 MA's), (70, 8741), (82, 8780), (85, 8804), (95, 8957), (97, 8966), (103, 9002), (104, 9014), (113, 9107), (119, 9188), (123, 9194), (129, 9242), (139, 9362), (150, 9473), (153, 9494), (158, 9524),

Gene: Yucca_29 Start: 9328, Stop: 10272, Start Num: 32

Candidate Starts for Yucca_29:

(Start: 32 @9328 has 142 MA's), (Start: 35 @9334 has 21 MA's), (70, 9457), (82, 9496), (85, 9520), (95, 9673), (97, 9682), (103, 9718), (104, 9730), (113, 9823), (119, 9904), (123, 9910), (129, 9958), (139, 10078), (150, 10189), (153, 10210), (158, 10240),

Gene: Zalkecks_31 Start: 9410, Stop: 10354, Start Num: 32

Candidate Starts for Zalkecks_31:

(Start: 32 @9410 has 142 MA's), (Start: 35 @9416 has 21 MA's), (70, 9539), (82, 9578), (85, 9602), (95, 9755), (97, 9764), (103, 9800), (104, 9812), (113, 9905), (119, 9986), (123, 9992), (129, 10040), (139, 10160), (150, 10271), (153, 10292), (158, 10322),

Gene: Zeenon_31 Start: 9398, Stop: 10336, Start Num: 35

Candidate Starts for Zeenon_31:

(Start: 32 @9392 has 142 MA's), (Start: 35 @9398 has 21 MA's), (70, 9521), (82, 9560), (85, 9584), (95, 9737), (97, 9746), (103, 9782), (104, 9794), (113, 9887), (119, 9968), (123, 9974), (129, 10022), (139, 10142), (150, 10253), (153, 10274), (158, 10304),

Gene: Zenon_80 Start: 60339, Stop: 61313, Start Num: 19

Candidate Starts for Zenon_80:

(18, 60336), (Start: 19 @60339 has 4 MA's), (Start: 20 @60351 has 3 MA's), (22, 60369), (Start: 27 @60387 has 2 MA's), (48, 60444), (69, 60516), (70, 60519), (76, 60534), (77, 60537), (78, 60540), (83, 60558), (86, 60582), (88, 60627), (91, 60654), (92, 60663), (94, 60687), (96, 60714), (99, 60741), (102, 60750), (103, 60756), (108, 60822), (112, 60858), (117, 60876), (125, 60957), (126, 60972), (129, 60996), (135, 61038), (136, 61044), (143, 61167), (150, 61224), (155, 61260),

Gene: ZygoTaiga_29 Start: 9412, Stop: 10350, Start Num: 35

Candidate Starts for ZygoTaiga_29:

(Start: 32 @9406 has 142 MA's), (Start: 35 @9412 has 21 MA's), (70, 9535), (82, 9574), (85, 9598), (95, 9751), (97, 9760), (103, 9796), (104, 9808), (113, 9901), (119, 9982), (123, 9988), (129, 10036), (139, 10156), (150, 10267), (153, 10288), (158, 10318),